



Firmware Version: 3.10.013
Boot Code Version: 1.00.005
Published: Oct 12, 2012

The release notes include important information about D-Link switch firmware revisions. Please follow below steps to find version information:

- If you are installing a new switch, please check the hardware version on the device label. Make sure that your switch meets the system requirement of this firmware version. Please Refer to [Revision History and System Requirement](#) for firmware and hardware matrix.
- If the switch is powered on, you can check the hardware version by typing "show switch" command via Telnet or by checking the device information page on the web graphic user interface.

If you plan to upgrade firmware, please refer to the [Upgrade Instructions](#) for the correct firmware upgrade procedure.

For detailed product information, please refer to [Related Documentation](#).

You can also download the switch firmware, D-View modules and technical documentation from www.dlink.com.au/tech

Index

Revision History and System Requirement:	2
Upgrade Instructions:	2
Upgrade using CLI (via Telnet).....	2
Upgrade using Web-UI.....	3
Upgrade using SmartConsole Utility.....	5
New Features:.....	8
Changes of MIB & D-View Module:	8
Changes of Command Line Interface:	9
Problem Fixed:	9
Known Issues:	10
Related Documentation:	10

Revision History and System Requirement:

Firmware Version	Date	Model	Hardware Version
v3.10.013	2012/10/12	DGS-1210-20 DGS-1210-28 DGS-1210-52	B1
v3.01.003	2012/04/25	DGS-1210-20 DGS-1210-28 DGS-1210-52	B1
v3.00.012	2012/02/24	DGS-1210-20 DGS-1210-28 DGS-1210-28P DGS-1210-52	B1

* The firmware v3.00 or later versions do not work on DGS-1210-16/24/48 ver.A1.

Upgrade Instructions:

D-Link Smart Switches support firmware upgrade via TFTP server. You can download the firmware from D-Link web site www.dlink.com.au/tech, and copy the downloaded firmware to the TFTP server folder. Please make sure that the TFTP server is accessible from the switch via networks.

Upgrade using CLI (via Telnet)

1. Make sure the network connection between the switch and PC is active.
2. Use software that supports telnet, for example, HyperTerminal or Telnet command in Microsoft Windows, to connect to the switch. If you are using Telnet command, type the command followed by the switch IP address, eg. *telnet 10.90.90.90*.
3. The logon prompt will appear.

The switch will prompt the user to enter his/her username and password. It should be noted that upon the initial connection, both the default user name and password are **admin**.

To upgrade the switch firmware, execute the following command:

Command	Function
download{firmware_fromTFTP tftp://ip-address/filename cfg_fromTFTP tftp://ip-address/filename}	Download firmware file from the TFTP server to the switch.

When completing firmware upgrade, the following messages will pop up.

```
Device will reboot after firmware upgraded successfully
Image upgraded successfully
```

4. Execute the following command to check the firmware version and switch's information.

Command	Function
show switch	Display the information of current firmware and boot version.

Example:

1. **DGS-1210-28P:**

```
Command: download firmware_fromTFTP tftp://10.90.90.91 DGS-1210-28P B1_3_00_012.hex
Device will reboot after firmware upgraded successfully
Image upgraded successfully
```

2. **DGS-1210-28P:**

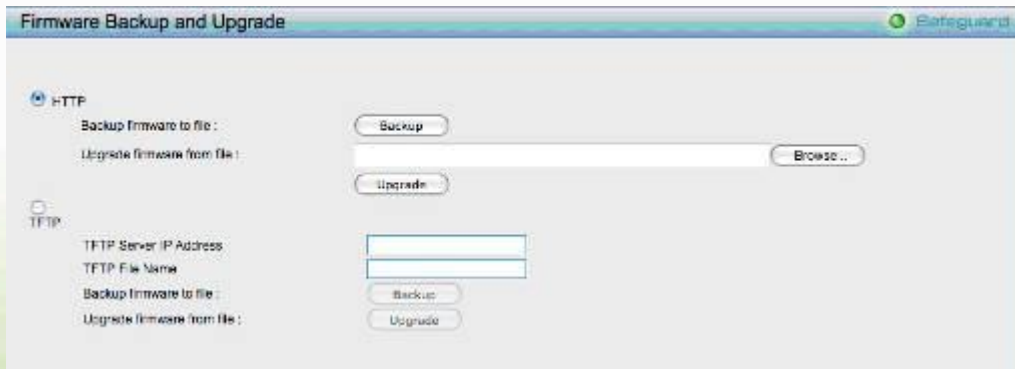
```
Command: show switch
DGS-1210-52> show switch
System name                :
System Contact             :
System Location            :
System up time             : 0 days, 1 hrs, 8 min, 36 secs
System Time                : 01/01/2009 01:58:42
System hardware version    : B1
System firmware version    : 3.00.012
System boot version        : 1.00.005
System Protocol version    : 2.001.004
System serial number       : LABDGS1228P08
MAC Address                 : 00-12-28-00-08-00
```

Upgrade using Web-UI

1. Connect a workstation installed with java SE runtime environment to any switch port of the device.
2. Open the web browser from the workstation and enter the IP address of the switch. The switch's default IP address is 10.90.90.90.
3. Enter administrator's password when prompted. The password is **admin** by default.
4. To update switch's firmware or configuration file, select **Tools > Firmware Backup & Upgrade** from the banner.

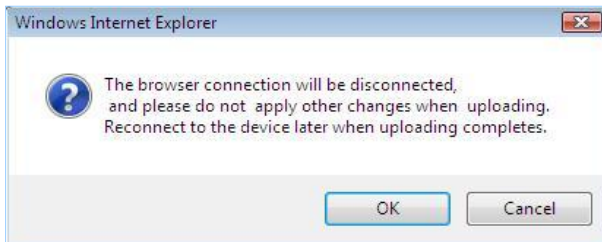


5. Two methods can be selected : **HTTP** or **TFTP**

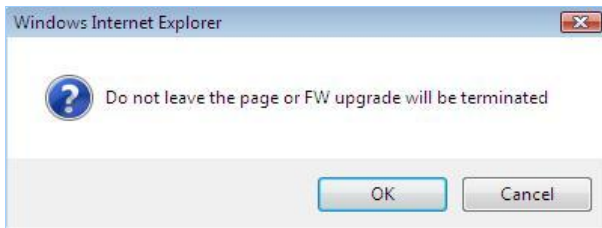


6. Select **HTTP** to upgrade the firmware to or from your local drive of PC.
 - a. Click **Browse** to browse your inventories for a saved firmware file

- b. Click **Upgrade** after selecting the firmware file you want to restore
- c. Click **OK** to continue with firmware upgrade



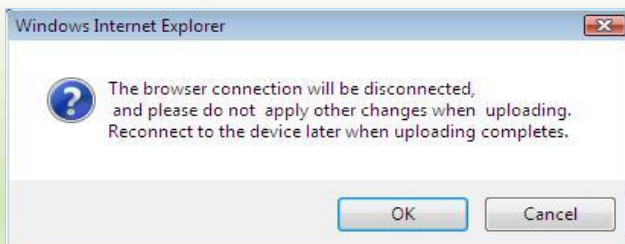
- d. Click **OK** to continue with firmware upgrade

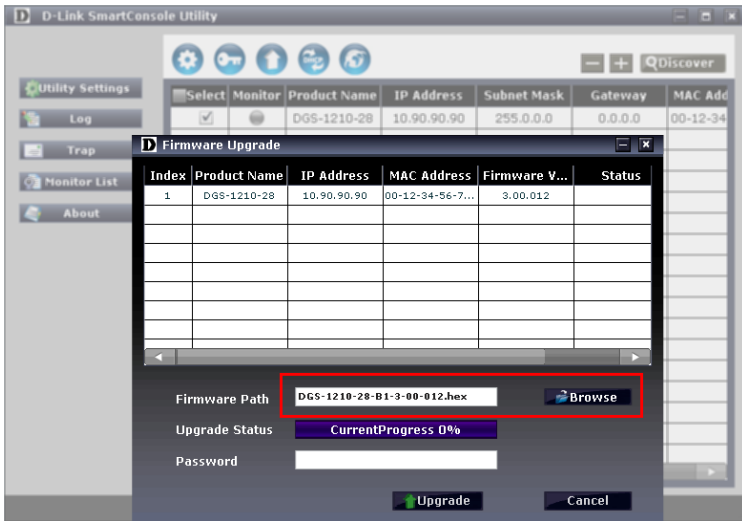


- e. Wait until the "Firmware Upgrade Successful" message pops up and login again after device boots up.

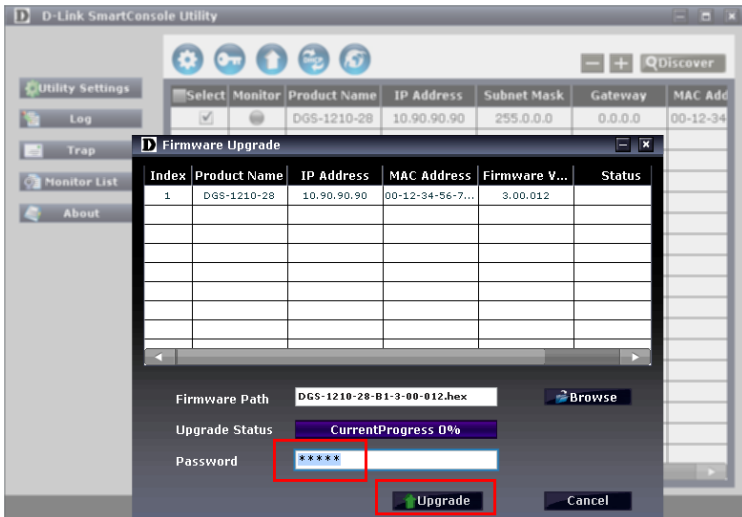


- 7. Select **TFTP** to upgrade the firmware to or from a remote TFTP server.
 - a. Enter the name of the firmware file located on the TFTP server
 - b. Click **Upgrade** after selecting the firmware file you want to restore
 - c. Click **OK** to continue with firmware upgrade

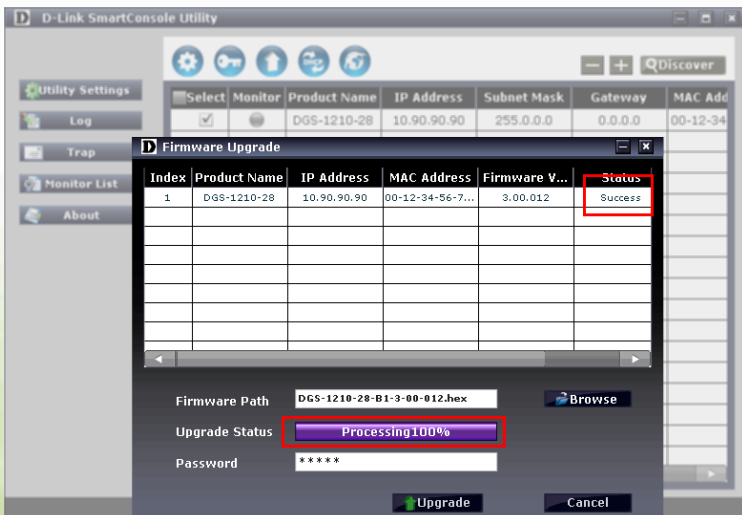




7. Enter password and click "Upgrade" button to start firmware upgrade. The default password is "admin".



8. Once the message changed to success, click "Cancel" button to complete and exit the firmware upgrade



New Features:

Firmware Version	New Features
V3.10.013	<ol style="list-style-type: none"> IPv6 address configuration: web, TFTP, SNMP, Telnet, Radius server, SSL, SNTP., Trusted Host, DHCP Server Screening, System Log IPv4/IPv6 Dual Stack IPv6 Neighbor Discovery IPv6 ACL ICMPv6 ZoneDefense MIB Loopback Detection upgrades to v4.04 Add CoS packet classification for TOS, TCP/UDP port, and Traffic Class IPv6 Ready Logo Phase II Add EEE configuration page and change the default setting to Disable
V3.01.003	<p>Since firmware vision v3.01, the configuration files made by DGS-1210-16/24/48 A1 can be loaded to B1 per below model pairs.</p> <p>DGS-1210-16/A1 config → for DGS-1210-20/B1 DGS-1210-24/A1 config → for DGS-1210-28/B1 DGS-1210-48/A1 config → for DGS-1210-52/B1</p> <p>Port settings are transferred according to port numbers of copper ports. Therefore, if the SFP ports on DGS-1210-16/24/48 ver.A1 are configured, after loading the configuration files to B1, on SFP ports below functions need manual settings.</p> <ol style="list-style-type: none"> Port Setting 802.1Q VLAN Link Aggregation Port Mirroring Bandwidth control 802.1p/DSCP Priority Setting ARP Spoofing Prevention Port Security MAC address table DHCP Server Screening
V3.00.012	First Release

Changes of MIB & D-View Module:

The new features of MIB file are also included in the corresponding D-View module. Please download the D-View module from www.dlink.com.au/tech. For detailed changes of MIB content, please refer to the modification history in each MIB file.

Firmware Version	MIB File	New Features
V3.10.013	GS-1210-20-BX-3-10-008.mib DGS-1210-28-BX-3-10-008.mib DGS-1210-28P-BX-3-10-008.mib DGS-1210-52-BX-3_10_008.mib	Supporting new IPv6 functions
V3.01.003	DGS-1210-20-BX-3-00-005.mib DGS-1210-28-BX-3-00-005.mib	None
V3.00.012	DGS-1210-28P-BX-3-00-005.mib DGS-1210-52-BX-3-00-005.mib	First Release

Firmware Version	D-View Module File	New Features
V3.10.013	DV_DGS-1210-20_V3.0.0.6_FW_v3.10.011.exe DV_DGS-1210-28_V3.0.0.6_FW_v3.10.011.exe DV_DGS-1210-28P_V3.0.0.6_FW_v3.10.011.exe DV_DGS-1210-52_V3.0.0.6_FW_v3.10.011.exe	For firmware v3.10.xxx
V3.01.003	DV_DGS-1210-20_V3.0.0.6_FW_v3.00.012.exe DV_DGS-1210-28_V3.0.0.6_FW_v3.00.012.exe DV_DGS-1210-28P_V3.0.0.6_FW_v3.00.012.exe	None
V3.00.012	DV_DGS-1210-52_V3.0.0.6_FW_v3.00.012.exe	First Release

Changes of Command Line Interface:

The section below only shows command line changes that may bring backward compatibility issues with configuration settings for previous version of firmware. Any new feature commands that do not have backward compatibility issues are not included in the below section.

Firmware Version	Changes
V3.10.003	None
V3.01.003	None
V3.00.012	First Release

Problem Fixed:

Firmware Version	Problems Fixed
V3.10.013	<ol style="list-style-type: none"> Link failed when using a Kinston mini GBIC to connect a DGS-1210-28 and DGS-3208F. (DGC20120913000002) If setting speed (ex.1000M Full Duplex) on a port, after reboot the port could not link up.
V3.01.003	None

V3.00.012	First Release
-----------	---------------

* D-Link tracking number is enclosed in ()

Known Issues:

Firmware Version	Issues	Workaround
V3.10.013	When connecting to Intel 82579 LM LAN controller in EEE mode, the link went up and down for a minute and then became stable. (DGC20120823000001)	Upgrading to the latest Intel driver and the link will become stable in EEE enable mode. Or disable EEE function on the switch.
	When connecting to JMicron JMC251A LAN controller in EEE mode, the link speed might drop to 100Mbps. (DGC20120820000003)	The early version of JMC251A did not fully comply with IEEE802.3az. Please disable the EEE function on the switch.
V3.00.012	N/A	None

Related Documentation:

- DGS-1210 Series User Manual
- DGS-1210 Series Getting Started Guide