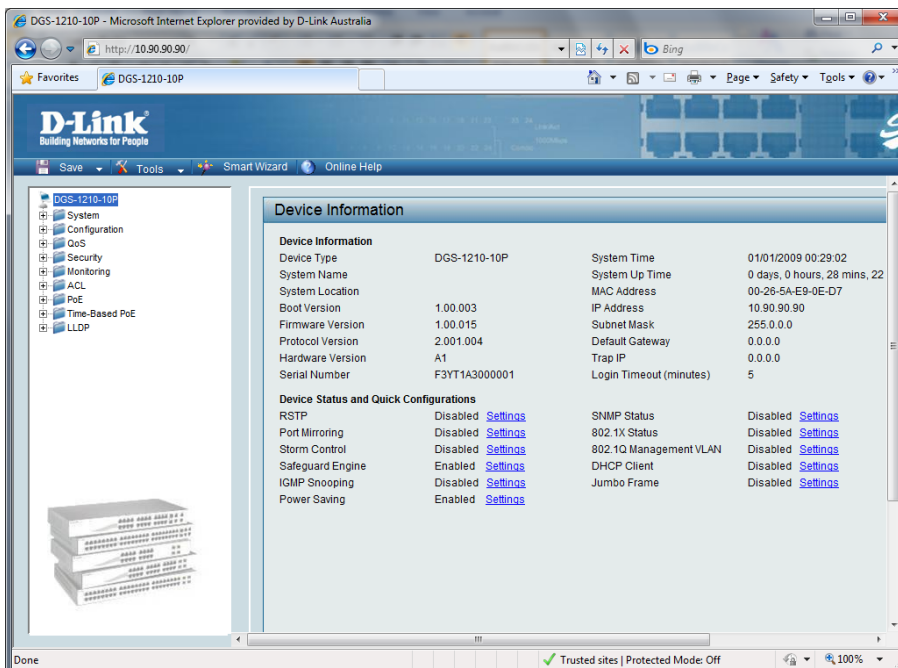
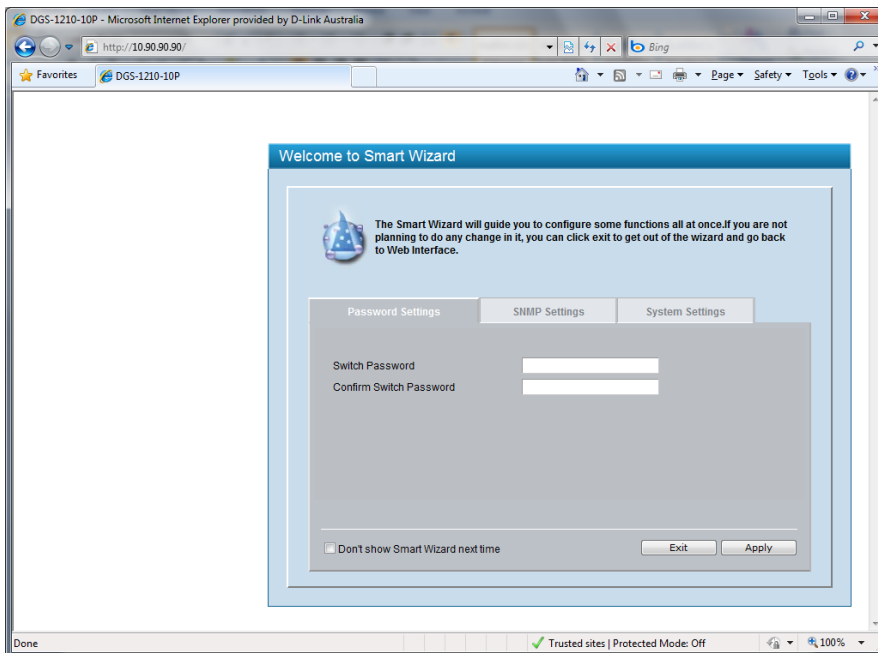
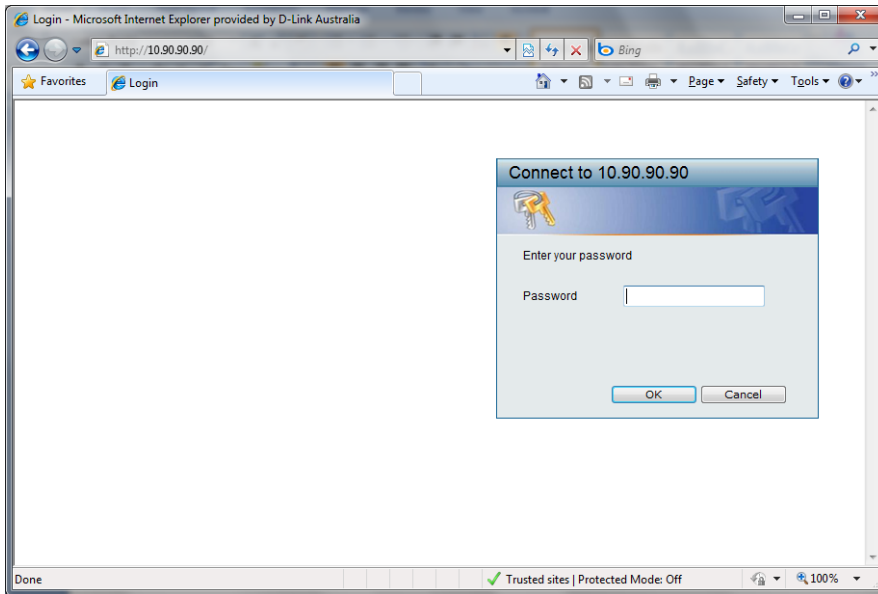


DGS-1210-10P fw 1.00.015



DGS-1210-10P - Microsoft Internet Explorer provided by D-Link Australia

http://10.90.90.90/

D-Link Building Networks for People

System Settings

**IP Information**

Static  DHCP  
 IP Address: 10 90 90 90  
 Subnet Mask: 255 0 0 0  
 Gateway: 0 0 0 0

**System Information**

System Name:   
 System Location:   
 Login Timeout (3-30 minutes): 5  
 Group Interval (120-1225 seconds): 120 (Disable: 0 second)

DGS-1210-10P - Microsoft Internet Explorer provided by D-Link Australia

http://10.90.90.90/

D-Link Building Networks for People

Trap Settings for SmartConsole

Enabled  Disabled  
 Destination IP: 0 0 0 0  
 System Event  Device Bootup  Illegal Login  
 Fiber Port Event  Link Up/Link Down  
 Twisted Pair Port Event  Link Up/Link Down  
 RSTP Port State Change  State Change  
 Firmware Upgrade State  Upgrade Success/ Upgrade Failure  
 POE Event  Trap notification if POE Power On / Off  
 POE Event  Trap notification if POE Power Error  
 POE Event  Trap notification if over max power budget

DGS-1210-10P - Microsoft Internet Explorer provided by D-Link Australia

http://10.90.90.90/

D-Link Building Networks for People

Port Settings

From Port: 1 To Port: 10 Speed: Auto MDI/MDIX: Auto Flow Control: Disabled

Port	Link Status	Speed	MDI/MDIX	Flow Control
1	1000M Full	1000M Full	Auto	AUTO
2	Down	100M Full	Auto	AUTO
3	Down	10M Full	Auto	AUTO
4	Down	10M Half	Auto	AUTO
5	Down	Auto	Auto	AUTO
6	Down	Disable	Auto	AUTO
7	Down		Auto	AUTO
8	Down		Auto	AUTO
9	Down		Auto	AUTO
10	Down		Auto	AUTO

DGS-1210-10P - Microsoft Internet Explorer provided by D-Link Australia

http://10.90.90.90/

D-Link Building Networks for People

System Log Settings

### SNMP Settings

SNMP  Enabled  Disabled

#### Community Settings

Access Right	Community Name
Read_Only	public
Read_Write	private

#### Trap Settings

Enabled  Disabled

Trap Name	IP	Event
public	0 0 0 0	<input type="checkbox"/> SNMP Authentication Traps <input type="checkbox"/> System Device Bootup <input type="checkbox"/> Fiber Port Link Up / Link Down <input type="checkbox"/> Twisted Pair Port Link Up / Link Down <input type="checkbox"/> RSTP Port State Change <input type="checkbox"/> Firmware Upgrade State <input type="checkbox"/> Trap notification if POE Power On / Off <input type="checkbox"/> Trap notification if POE Power Error <input type="checkbox"/> Trap notification if over max power budget

Done Trusted sites | Protected Mode: Off

DGS-1210-10P - Microsoft Internet Explorer provided by D-Link Australia

http://10.90.90.90/

D-Link Building Networks for People

System Log Settings

### Password Access Control

Old Password

New Password  (Password should be less than 20 characters)

Confirm Password

Done Trusted sites | Protected Mode: Off

DGS-1210-10P - Microsoft Internet Explorer provided by D-Link Australia

http://10.90.90.90/

D-Link Building Networks for People

System Log Settings

### System Log Configuration

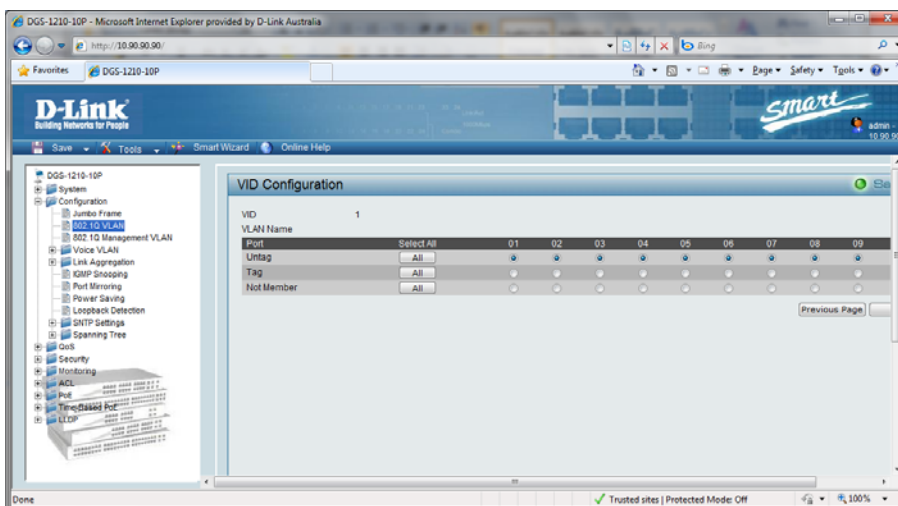
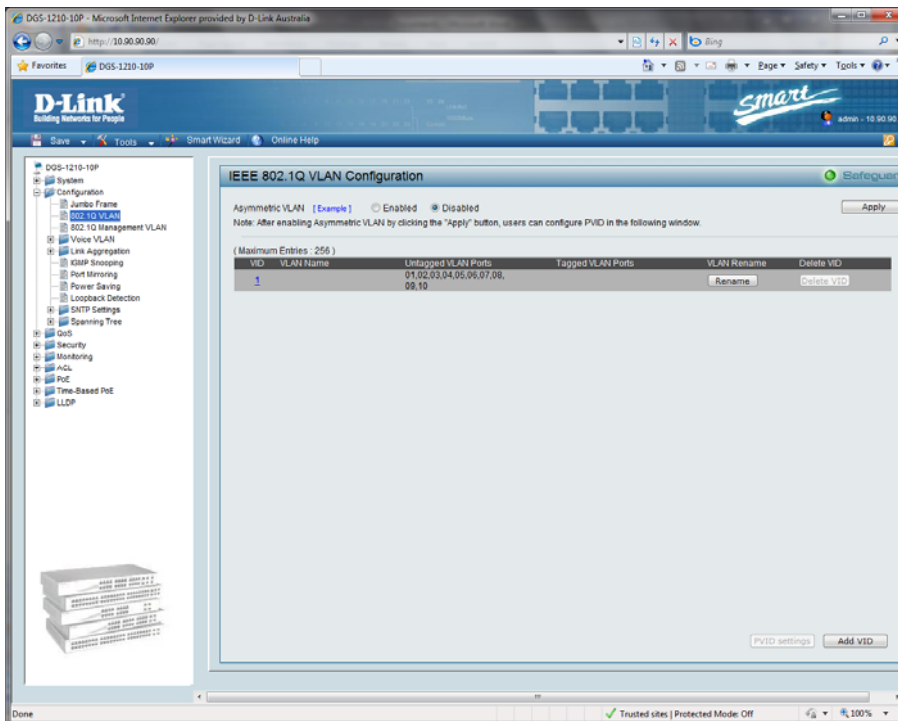
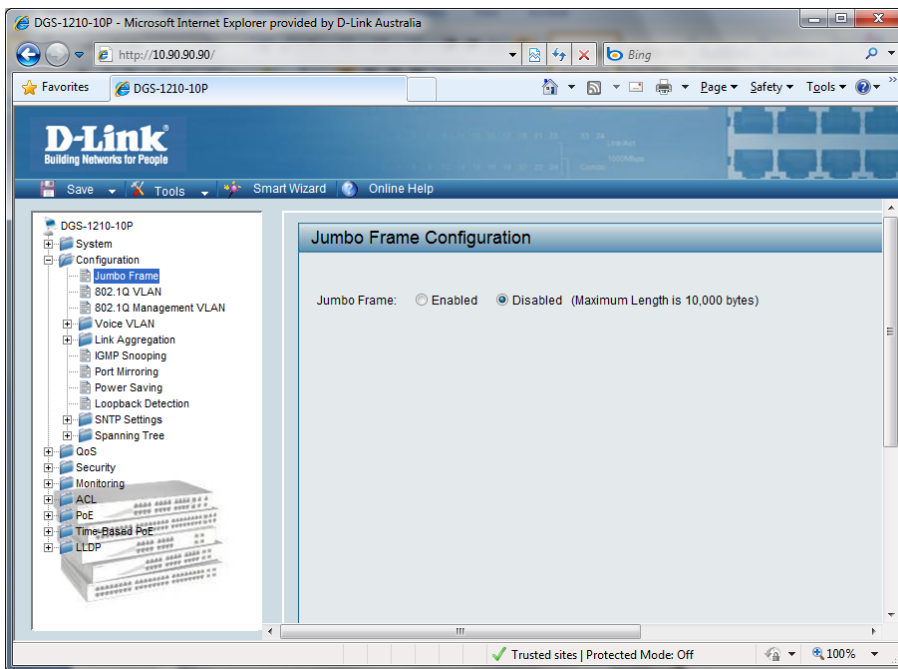
System Log  Enabled  Disabled

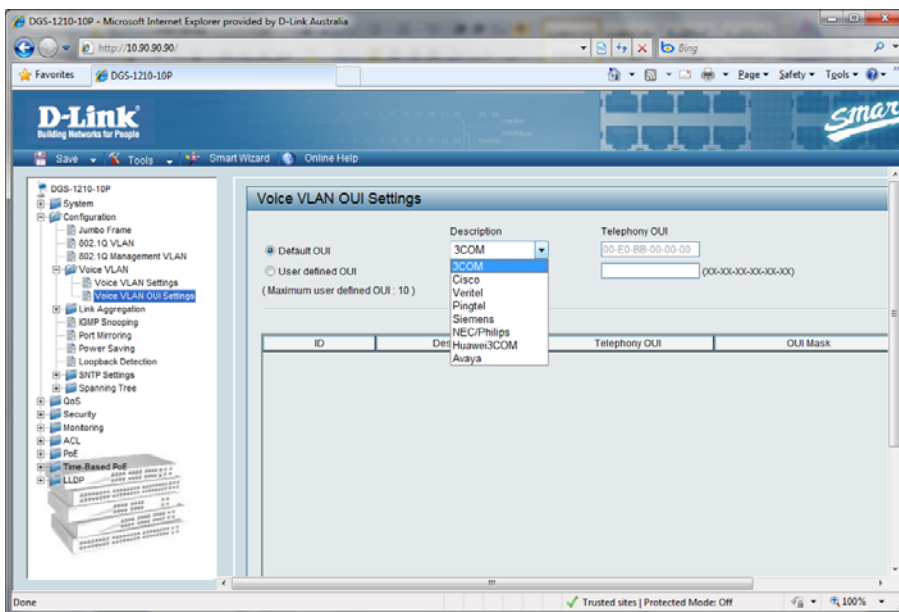
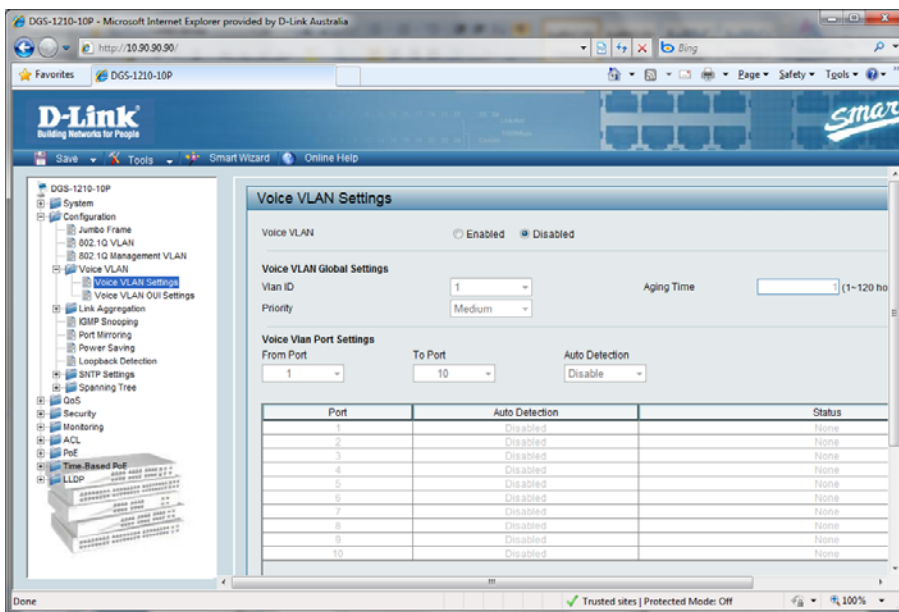
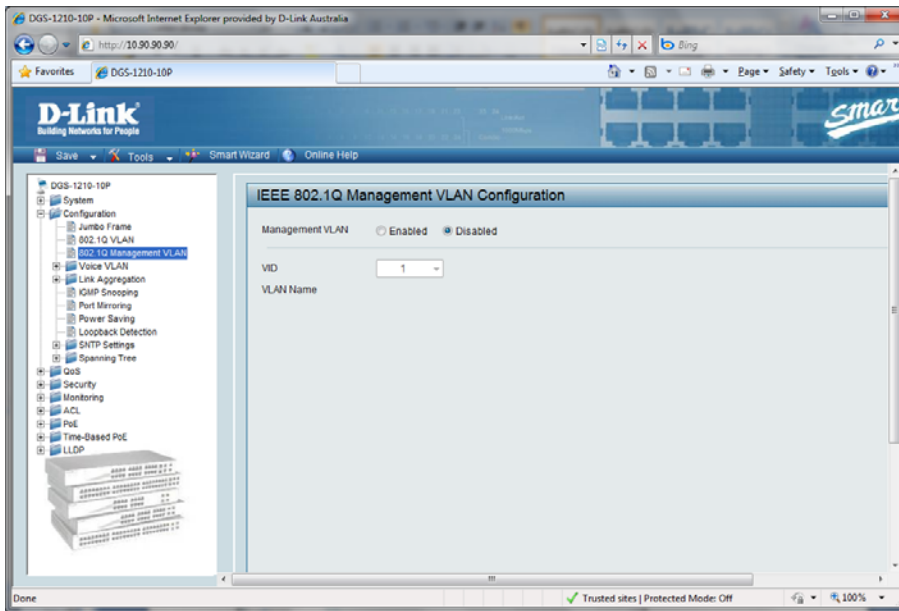
Server IP Address  Severity

UDP Port (1-65535)  Facility

Time Stamp

Done Trusted sites | Protected Mode: Off





DGS-1210-10P - Microsoft Internet Explorer provided by D-Link Australia

http://10.90.90.90/

D-Link Building Networks for People

Smart Wizard Online Help

System

- Configuration
  - Jumbo Frame
  - 802.1Q VLAN
  - 802.1Q Management VLAN
  - Voice VLAN
  - Voice VLAN Settings
  - Voice VLAN QoS Settings
  - Link Aggregation
    - Port Trunkings
    - LACP Port Settings
  - IGMP Snooping
  - Port Mirroring
  - Power Saving
  - Loopback Detection
  - SNTP Settings
  - Spanning Tree
- QoS
- Security
- Monitoring
- ACL
- POE
- Time-Based PoE
- LLDP

Port Trunking

Link Aggregation State:  Enabled  Disabled

Edit Trunking Information

ID	01	Type	Disable
Port	1	2	3
	4	5	
	6	7	8
	9	10	

Note: maximum 8 ports in static group and 8 ports in LACP group.

Trunking list

ID	Type	Ports
01	Disable	
02	Disable	
03	Disable	
04	Disable	
05	Disable	

Done Trusted sites | Protected Mode: Off

DGS-1210-10P - Microsoft Internet Explorer provided by D-Link Australia

http://10.90.90.90/

D-Link Building Networks for People

Smart Wizard Online Help

System

- Configuration
  - Jumbo Frame
  - 802.1Q VLAN
  - 802.1Q Management VLAN
  - Voice VLAN
  - Voice VLAN Settings
  - Voice VLAN QoS Settings
  - Link Aggregation
    - Port Trunkings
    - LACP Port Settings
  - IGMP Snooping
  - Port Mirroring
  - Power Saving
  - Loopback Detection
  - SNTP Settings
  - Spanning Tree
- QoS
- Security
- Monitoring
- ACL
- POE
- Time-Based PoE
- LLDP

LACP Port Settings

Link Aggregation Port Configuration

From Port: 01 To Port: 10 Port Priority(0-65535): 128 Activity: Passive Timeout: short (3 sec)

Port	Port Priority	Activity	Timeout
01	128	Active	Long (90 sec)
02	128	Active	Long (90 sec)
03	128	Active	Long (90 sec)
04	128	Active	Long (90 sec)
05	128	Active	Long (90 sec)
06	128	Active	Long (90 sec)
07	128	Active	Long (90 sec)
08	128	Active	Long (90 sec)
09	128	Active	Long (90 sec)
10	128	Active	Long (90 sec)

Done Trusted sites | Protected Mode: Off

DGS-1210-10P - Microsoft Internet Explorer provided by D-Link Australia

http://10.90.90.90/

D-Link Building Networks for People

Smart Wizard Online Help

System

- Configuration
  - Jumbo Frame
  - 802.1Q VLAN
  - 802.1Q Management VLAN
  - Voice VLAN
  - Voice VLAN Settings
  - Voice VLAN QoS Settings
  - Link Aggregation
    - Port Trunkings
    - LACP Port Settings
  - IGMP Snooping
  - Port Mirroring
  - Power Saving
  - Loopback Detection
  - SNTP Settings
  - Spanning Tree
- QoS
- Security
- Monitoring
- ACL
- POE
- Time-Based PoE
- LLDP

IGMP Snooping Configuration

IGMP Snooping:  Enabled  Disabled

IGMP Global Settings

Host Timeout (130-153025 sec): 260 Router Timeout (60-600 sec):

Robustness Variable (2-255): 2 Last Member Query Interval (1-25 sec):

Query Interval (60-600 sec): 125 Max Response Time (10-25 sec):

Note: The Host Timeout was computed automatically in Querier Enabled by (Robustness Variable \* Query Interval \* Max Response Time).

The VLAN Settings of IGMP snooping

VLAN ID	VLAN Name	State	Querier State	Router Ports Settings	Multicast Enbr
1		Enabled	Disabled	Edit	View

Done Trusted sites | Protected Mode: Off

DGS-1210-10P - Microsoft Internet Explorer provided by D-Link Australia

http://10.90.90.90/

D-Link Building Networks for People

Smart

Save Tools Smart Wizard Online Help

DGS-1210-10P

- System
  - Configuration
    - Jumbo Frame
    - 802.1Q VLAN
    - 802.1Q Management VLAN
    - Voice VLAN
    - Link Aggregation
    - KXMP Snooping
    - Port Mirroring
    - Power Saving
    - Loopback Detection
    - SNTP Settings
    - Spanning Tree
  - QoS
  - Security
  - Monitoring
  - ACL
  - PoE
  - Time-Based PoE
  - LLDP

Port Mirroring Configuration

Port Mirroring  Enabled  Disabled

Target Port: 01

Source Port Selection

Sniffer Mode	Selected All	01	02	03	04	05	06	07	08
TX	All	<input type="checkbox"/>	<input type="checkbox"/>	<input type="checkbox"/>	<input type="checkbox"/>	<input type="checkbox"/>	<input type="checkbox"/>	<input type="checkbox"/>	<input type="checkbox"/>
RX	All	<input type="checkbox"/>	<input type="checkbox"/>	<input type="checkbox"/>	<input type="checkbox"/>	<input type="checkbox"/>	<input type="checkbox"/>	<input type="checkbox"/>	<input type="checkbox"/>
Both	All	<input type="checkbox"/>	<input type="checkbox"/>	<input type="checkbox"/>	<input type="checkbox"/>	<input type="checkbox"/>	<input type="checkbox"/>	<input type="checkbox"/>	<input type="checkbox"/>
None	All	<input type="checkbox"/>	<input type="checkbox"/>	<input type="checkbox"/>	<input type="checkbox"/>	<input type="checkbox"/>	<input type="checkbox"/>	<input type="checkbox"/>	<input type="checkbox"/>

Done

Trusted sites | Protected Mode: Off

DGS-1210-10P - Microsoft Internet Explorer provided by D-Link Australia

http://10.90.90.90/

D-Link Building Networks for People

Smart

Save Tools Smart Wizard Online Help

DGS-1210-10P

- System
  - Configuration
    - Jumbo Frame
    - 802.1Q VLAN
    - 802.1Q Management VLAN
    - Voice VLAN
    - Link Aggregation
    - KXMP Snooping
    - Port Mirroring
    - Power Saving
    - Loopback Detection
    - SNTP Settings
    - Spanning Tree
  - QoS
  - Security
  - Monitoring
  - ACL
  - PoE
  - Time-Based PoE
  - LLDP

Power Saving Configuration

Power Saving  Enabled  Disabled

The Power Saving mode is capable of reducing power consumption automatically when connected devices are switched off or cable length less than 10 meters. In this mode, reducing power consumption, less heat is produced, resulting in extended product life and lower operating costs. By default, the Power Saving mode is disabled.

Done

Trusted sites | Protected Mode: Off

DGS-1210-10P - Microsoft Internet Explorer provided by D-Link Australia

http://10.90.90.90/

D-Link Building Networks for People

Smart

Save Tools Smart Wizard Online Help

DGS-1210-10P

- System
  - Configuration
    - Jumbo Frame
    - 802.1Q VLAN
    - 802.1Q Management VLAN
    - Voice VLAN
    - Link Aggregation
    - KXMP Snooping
    - Port Mirroring
    - Power Saving
    - Loopback Detection
    - SNTP Settings
    - Spanning Tree
  - QoS
  - Security
  - Monitoring
  - ACL
  - PoE
  - Time-Based PoE
  - LLDP

Loopback Detection Settings

State  Enabled  Disabled

Loopback Detection Global Settings

Interval (1-32767): 2 sec

Recover Time (0 or 60-1000000): 60 sec

From Port: 1 To Port: 10 State: Disabled

Apply

Port	Loopdetect Detection State	Loop Status
1	Disabled	Normal
2	Disabled	Normal
3	Disabled	Normal
4	Disabled	Normal
5	Disabled	Normal
6	Disabled	Normal
7	Disabled	Normal
8	Disabled	Normal
9	Disabled	Normal
10	Disabled	Normal

Done

Trusted sites | Protected Mode: Off

DGS-1210-10P - Microsoft Internet Explorer provided by D-Link Australia

http://10.90.90.90/

D-Link Building Networks for People

Smart Wizard Online Help

System

- Configuration
  - Jumbo Frame
  - 802.1Q VLAN
  - 802.1Q Management VLAN
  - Voice VLAN
  - Link Aggregation
    - KMP Snooping
    - Port Mirroring
    - Power Saving
    - Loopback Detection
  - SNTP Settings
    - Time Settings**
    - TimeZone Settings
    - Spanning Tree
  - QoS
  - Security
  - Monitoring
  - ACL
  - PoE
  - Time-Based PoE
  - LLDP

Time Settings

Clock Source:  Local  SNTP

Current Time: 01/01/2009 00:37:58

SNTP Server Configuration

SNTP First Server: 0.0.0.0

SNTP Second Server: 0.0.0.0

SNTP Poll Interval In Seconds (30-99999): 30

Manually set current time

Date (DDMMYYYY): 01/01/2009

Time (HHMMSS): 00:37:58

Set time from PC

Date (DDMMYYYY): 09/04/2010

Time (HHMMSS): 13:51:43

Done Trusted sites | Protected Mode: Off

DGS-1210-10P - Microsoft Internet Explorer provided by D-Link Australia

http://10.90.90.90/

D-Link Building Networks for People

Smart Wizard Online Help

System

- Configuration
  - Jumbo Frame
  - 802.1Q VLAN
  - 802.1Q Management VLAN
  - Voice VLAN
  - Link Aggregation
    - KMP Snooping
    - Port Mirroring
    - Power Saving
    - Loopback Detection
  - SNTP Settings
    - Time Settings
    - TimeZone Settings**
    - Spanning Tree
  - QoS
  - Security
  - Monitoring
  - ACL
  - PoE
  - Time-Based PoE
  - LLDP

TimeZone Settings

Daylight Saving Time State: Disabled

Daylight Saving Time Offset In Minutes: 60

Time Zone Offset from GMT In +HHMM: + 00 00

DST Annual Settings

From: Month: Jan

From: Day: 01

From: Time In HHMM: 00 00

To: Month: Jan

To: Day: 01

To: Time In HHMM: 00 00

Done Trusted sites | Protected Mode: Off

DGS-1210-10P - Microsoft Internet Explorer provided by D-Link Australia

http://10.90.90.90/

D-Link Building Networks for People

Smart Wizard Online Help

System

- Configuration
  - Jumbo Frame
  - 802.1Q VLAN
  - 802.1Q Management VLAN
  - Voice VLAN
  - Link Aggregation
    - KMP Snooping
    - Port Mirroring
    - Power Saving
    - Loopback Detection
  - SNTP Settings
    - Time Settings
    - TimeZone Settings
    - Spanning Tree
      - STP Global Settings**
      - STP Port Settings
  - QoS
  - Security
  - Monitoring
  - ACL
  - PoE
  - Time-Based PoE
  - LLDP

STP Global Settings

RSTP Status:  Enabled  Disabled

STP Version: RSTP

Bridge Priority: 32768

Tx Hold Count (1-10): 6

Maximum Age (6-40 secs): 20

Hello Time (1-10 secs): 2

Forward Delay (4-30 secs): 12

Root Bridge: 00 00 00 00 00 00 00 00

Root Cost: 0

Root Maximum Age: 20

Root Forward Delay: 15

Root Port: 0

Done Trusted sites | Protected Mode: Off



DGS-1210-10P - Microsoft Internet Explorer provided by D-Link Australia

http://10.90.90.90/

D-Link Building Networks for People

Smart Wizard Online Help

System

- Configuration
  - Jumbo Frame
  - 802.1Q VLAN
  - 802.1Q Management VLAN
  - Voice VLAN
  - Link Aggregation
  - KMP Snooping
  - Port Mirroring
  - Power Saving
  - Loopback Detection
  - SNTP Settings
  - Spanning Tree
    - STP Global Settings
    - STP Port Settings**
- QoS
- Security
- Monitoring
- ACL
- PoE
- Time-based PoE
- LLDP

STP Port Settings

From Port: 01 To Port: 10 State: Enabled

External Cost (0-20000000; 0=HALT): 2000000 Migrate: Disabled Edge: Auto

Priority: 128 P2P: Auto Restricted Role: False

Restricted TCN: False

Apply

Port	State	Priority	External Cost	Edge	P2P	Restricted Role	Restricted TCN
01							
02							
03							
04							
05							
06							
07							
08							
09							
10							

Done Trusted sites | Protected Mode: Off

DGS-1210-10P - Microsoft Internet Explorer provided by D-Link Australia

http://10.90.90.90/

D-Link Building Networks for People

Smart Wizard Online Help

System

- Configuration
  - Jumbo Frame
  - 802.1Q VLAN
  - 802.1Q Management VLAN
  - Voice VLAN
  - Link Aggregation
  - KMP Snooping
  - Port Mirroring
  - Power Saving
  - Loopback Detection
  - SNTP Settings
  - Spanning Tree
  - QoS
    - Storm Control**
    - Bandwidth Control
    - 802.1p/DSCP Priority Settings
  - Security
  - Monitoring
  - ACL
  - PoE
  - Time-based PoE
  - LLDP

Storm Control

Storm Control:  Enable  Disable

Storm Control: Multicast & Broadcast & Unknown Unicast

Threshold (84Kbps \* N): 64Kbps \* N = (1 - 15000) = unlimited Kbps

Done Trusted sites | Protected Mode: Off

DGS-1210-10P - Microsoft Internet Explorer provided by D-Link Australia

http://10.90.90.90/

D-Link Building Networks for People

Smart Wizard Online Help

System

- Configuration
  - Jumbo Frame
  - 802.1Q VLAN
  - 802.1Q Management VLAN
  - Voice VLAN
  - Link Aggregation
  - KMP Snooping
  - Port Mirroring
  - Power Saving
  - Loopback Detection
  - SNTP Settings
  - Spanning Tree
  - QoS
    - Storm Control
    - Bandwidth Control**
    - 802.1p/DSCP Priority Settings
  - Security
  - Monitoring
  - ACL
  - PoE
  - Time-based PoE
  - LLDP

Bandwidth Control

From Port: 01 To Port: 10 Type: Rx No Limit Rate(54-1024000): Disabled Rate(54-1024000) Kbits/sec

Port	Tx Rate (kbits/sec)	Rx Rate (kbits/sec)
01	No Limit	No Limit
02	No Limit	No Limit
03	No Limit	No Limit
04	No Limit	No Limit
05	No Limit	No Limit
06	No Limit	No Limit
07	No Limit	No Limit
08	No Limit	No Limit
09	No Limit	No Limit
10	No Limit	No Limit

Done Trusted sites | Protected Mode: Off

DGS-1210-10P - Microsoft Internet Explorer provided by D-Link Australia

http://10.90.90.90/

D-Link Building Networks for People

Smart Wizard Online Help

DGS-1210-10P

- System
- Configuration
  - Jumbo Frame
  - 802.1Q VLAN
  - 802.1Q Management VLAN
  - Voice VLAN
  - Link Aggregation
  - IGMP Snooping
  - Port Mirroring
  - Power Saving
  - Loopback Detection
  - SNTP Settings
  - Spanning Tree
- QoS
  - Storm Control
  - Bandwidth Control
  - 802.1p/DSCP Priority Settings
- Security
  - Trusted Host
  - Safeguard Engine
  - Port Security
  - 802.1X
  - MAC Address Table
- Monitoring
- ACL
- POE
- Time-Based PoE
- LLDP

### IEEE 802.1p Default Priority

Select QoS Mode:  802.1p  DSCP

Queuing mechanism:  Strict Priority  WRR (By default is strict priority)

By default the 802.1p is chosen. To enable DSCP mode, please select the DSCP mode and press "Apply" to go to DSCP Priority Settings page.

From Port: 1 To Port: 10 Priority: Medium

Port	Priority
1	Medium
2	Medium
3	Medium
4	Medium
5	Medium
6	Medium
7	Medium
8	Medium
9	Medium
10	Medium

For ingress untagged packets, the per port "Default Priority" settings will be applied to packets of provide port-based traffic prioritization.  
For ingress tagged packets, D-Link Smart Switches will refer to their 802.1p information and provide different priority queues.

Done Trusted sites | Protected Mode: Off

DGS-1210-10P - Microsoft Internet Explorer provided by D-Link Australia

http://10.90.90.90/

D-Link Building Networks for People

Smart Wizard Online Help

DGS-1210-10P

- System
- Configuration
- QoS
- Security
  - Trusted Host
  - Safeguard Engine
  - Port Security
  - 802.1X
  - MAC Address Table
- Monitoring
- ACL
- POE
- Time-Based PoE
- LLDP

### Trusted Host

Trusted Host:  Enabled  Disabled

Trusted Host Settings (Maximum Entries: 10)

ID	IP Address	IP Mask

Note: Create a list of IP Addresses that can access the switch. Your local host IP Addresses must be one of the IP Addresses to avoid disconnect

Done Trusted sites | Protected Mode: Off

DGS-1210-10P - Microsoft Internet Explorer provided by D-Link Australia

http://10.90.90.90/

D-Link Building Networks for People

Smart Wizard Online Help

DGS-1210-10P

- System
- Configuration
- QoS
- Security
  - Trusted Host
  - Safeguard Engine
  - Port Security
  - 802.1X
  - MAC Address Table
- Monitoring
- ACL
- POE
- Time-Based PoE
- LLDP

### Safeguard Engine

Safeguard Engine:  Enabled  Disabled

D-Link **Safeguard Engine** is a robust and innovative technology developed by D-Link, which will automatically throttle the impact of packet flooding. It will keep D-Link Switches better protected from being too frequently interrupted by malicious viruses or worm attacks.

Done Trusted sites | Protected Mode: Off

DGS-1210-10P - Microsoft Internet Explorer provided by D-Link Australia

http://10.90.90.90/

D-Link Building Networks for People

Smart

Save Tools Smart Wizard Online Help

DGS-1210-10P

- System
- Configuration
- OS
- Security
  - Trusted Host
  - Safeguard Engine
  - Port Security
- 802.1X
- MAC Address Table
- Monitoring
- ACL
- PoE
- Time-Based PoE
- LLDP

Port Security

From Port: 01 To Port: 10 Admin State: Disabled Max Learning Address (0-64): 0

Port	Admin State	Max Learning Address
01	Disabled	0
02	Disabled	0
03	Disabled	0
04	Disabled	0
05	Disabled	0
06	Disabled	0
07	Disabled	0
08	Disabled	0
09	Disabled	0
10	Disabled	0

Done

Trusted sites | Protected Mode Off

DGS-1210-10P - Microsoft Internet Explorer provided by D-Link Australia

http://10.90.90.90/

D-Link Building Networks for People

Smart

Save Tools Smart Wizard Online Help

DGS-1210-10P

- System
- Configuration
- OS
- Security
  - Trusted Host
  - Safeguard Engine
  - Port Security
  - 802.1X
- MAC Address Table
- Monitoring
- ACL
- PoE
- Time-Based PoE
- LLDP

802.1X Settings

802.1X:  Enabled  Disabled

802.1X Global Settings

Radius Server IP: [ ] [ ] [ ] [ ] [ ] [ ] QuietPeriod (0 - 65535 sec): 60

Key: [ ] SuppTimeout (1 - 65535 sec): 12

Confirm Key: [ ] ServerTimeout (1 - 65535 sec): 10

TxPeriod (1 - 65535 sec): 24 MaxReq (1 - 10): 2

ReAuthEnabled: Disabled ReAuthPeriod (1 - 4294967295 sec): 3600

Apply Refresh

802.1X Port Access Control

From Port: 01 To Port: 10 Control: Auto

Port	Control	Port Status	Session Time	User ID
01	Force Authorized	*	0	*****
02	Force Authorized	*	0	*****
03	Force Authorized	*	0	*****
04	Force Authorized	*	0	*****
05	Force Authorized	*	0	*****
06	Force Authorized	*	0	*****
07	Force Authorized	*	0	*****

Done

Trusted sites | Protected Mode Off

DGS-1210-10P - Microsoft Internet Explorer provided by D-Link Australia

http://10.90.90.90/

D-Link Building Networks for People

Smart

Save Tools Smart Wizard Online Help

DGS-1210-10P

- System
- Configuration
- OS
- Security
  - Trusted Host
  - Safeguard Engine
  - Port Security
  - 802.1X
  - MAC Address Table
  - Static MAC
- Dynamic Forwarding Table
- Monitoring
- ACL
- PoE
- Time-Based PoE
- LLDP

Static MAC Configuration

Disable auto learning on ports other than the uplink ports configured below:  On  Off

Uplink Port:  01  02  03  04  05  06  07  08  09  10

Static MAC Address Lists (Maximum Entries: 256)

ID	Port	MAC Address	VID
----	------	-------------	-----

Done

Trusted sites | Protected Mode Off

DGS-1210-10P - Microsoft Internet Explorer provided by D-Link Australia

http://10.90.90.90

D-Link Building Networks for People

Smart

Save Tools Smart Wizard Online Help

DGS-1210-10P

- System
- Configuration
- OS
- Security
  - Trusted Host
  - Secure Engine
  - Port Security
  - 802.1X
    - 802.1X Settings
    - MAC Address Table
    - Static MAC
    - Dynamic Forwarding Table**
- Monitoring
- ACL
- Port
- Time-Based PoE
- LLDP

Dynamic Forwarding Table Configuration

Port: All

ID	Port	MAC Address	VID	Type	Add
1	1	00-0C-29-80-1C-99	1	Dynamic	
2	1	00-0C-29-80-40-58	1	Dynamic	
3	1	00-0F-80-E2-23-CD	1	Dynamic	
4	1	00-13-46-3E-06-3A	1	Dynamic	
5	1	00-16-17-87-85-34	1	Dynamic	
6	1	00-19-50-42-AD-E0	1	Dynamic	
7	1	00-19-60-CA-25-41	1	Dynamic	
8	1	00-1A-48-49-0E-FF	1	Dynamic	
9	1	00-20-4A-A2-57-F9	1	Dynamic	
10	1	00-21-91-8D-A9-00	1	Dynamic	
11	1	00-22-F3-04-4B-69	1	Dynamic	
12	1	00-50-56-4C-19-92	1	Dynamic	
13	1	00-50-56-A8-25-FF	1	Dynamic	
14	1	00-50-56-A8-30-A8	1	Dynamic	
15	1	00-50-56-A6-45-73	1	Dynamic	
16	1	00-50-56-A6-5D-F8	1	Dynamic	
17	1	00-C0-9F-30-1C-BB	1	Dynamic	

Done

Trusted sites | Protected Mode: Off

DGS-1210-10P - Microsoft Internet Explorer provided by D-Link Australia

http://10.90.90.90

D-Link Building Networks for People

Smart

Save Tools Smart Wizard Online Help

DGS-1210-10P

- System
- Configuration
- OS
- Security
- Monitoring
  - Statistics**
  - Cable Diagnostics
  - System Log
- ACL
- Port
- Time-Based PoE
- LLDP

Statistics

Port	TxOK	RxOK	TxError	RxError
1	3595	4429	0	0
2	0	0	0	0
3	0	0	0	0
4	0	0	0	0
5	0	0	0	0
6	0	0	0	0
7	0	0	0	0
8	0	0	0	0
9	0	0	0	0
10	0	0	0	0

Done

Trusted sites | Protected Mode: Off

DGS-1210-10P - Microsoft Internet Explorer provided by D-Link Australia

http://10.90.90.90

D-Link Building Networks for People

Smart

Save Tools Smart Wizard Online Help

DGS-1210-10P

- System
- Configuration
- OS
- Security
- Monitoring
  - Port Statistics**
  - Cable Diagnostics
  - System Log
- ACL
- Port
- Time-Based PoE
- LLDP

Port Statistics

TX		RX	
OutOctets	2090231	InOctets	780858
OutUcastPkts	3557	InUcastPkts	3484
OutMulticastPkts	99	InMulticastPkts	1011
OutErrors	0	InDiscards	0
LateCollisions	0	InErrors	0
ExcessiveCollisions	0	FCSErrors	0
InternalMacTransmitErrors	0	FrameTooLongs	0
		InternalMacReceiveErrors	0

Done

Trusted sites | Protected Mode: Off

DGS-1210-10P - Microsoft Internet Explorer provided by D-Link Australia

http://10.90.90.90

D-Link Building Networks for People

Smart

Save Tools Smart Wizard Online Help

DGS-1210-10P

- System
- Configuration
- QoS
- Security
- Monitoring
- Statistics
- Cable Diagnostics
- System Log
- ACL
- Port
- Time-Based PoE
- LLDP

### Cable Diagnostics

Port: 01 Test Now

Port	Test Result	Cable Fault Distance (meters)	Cable Length (meters) (in range)
The cable diagnostics feature is designed primarily for administrators or customer service representatives to verify and test copper cables; it can rapidly determine the quality of the cables and the types of error.			

**Note:**

1. Before enabling Cable Diagnostics function, please be sure to disable Power Saving via the Power Saving configuration of Web GUI.
2. If cable length is displayed as "N/A" it means the cable length is "Not Available". This is due to the port being unable to obtain cable length/either because its link speed is 10M or 100M, or the cables used are broken and/or bad in quality.
3. The deviation of "Cable Fault Distance" is +/-2 meters, therefore No cable may be displayed under Test Result, when the cable used is less than 2 m in length.
4. It also measures cable fault and identifies the fault in length according to the distance from this switch.

Done Trusted sites | Protected Mode: Off 100%

DGS-1210-10P - Microsoft Internet Explorer provided by D-Link Australia

http://10.90.90.90

D-Link Building Networks for People

Smart

Save Tools Smart Wizard Online Help

DGS-1210-10P

- System
- Configuration
- QoS
- Security
- Monitoring
- Statistics
- Cable Diagnostics
- System Log
- ACL
- Port
- Time-Based PoE
- LLDP

### Switch History Log

Refresh Clear

(Maximum Entries : 500)

ID	Time	Log Description	Severity
1	Jan 1 00:27:45 2009	Successful login through Web ( IP: 10.90.90.8 )	info
2	Jan 1 00:01:07 2009	System started up	critical

Done Trusted sites | Protected Mode: Off 100%

DGS-1210-10P - Microsoft Internet Explorer provided by D-Link Australia

http://10.90.90.90

D-Link Building Networks for People

Smart

Save Tools Smart Wizard Online Help

DGS-1210-10P

- System
- Configuration
- QoS
- Security
- Monitoring
- Statistics
- Cable Diagnostics
- System Log
- ACL
- ACL Configuration Wizard
- Access Profile List
- ACL Finder
- Port
- Time-Based PoE
- LLDP

### ACL Configuration Wizard

General ACL Rules

From: Any

To: Any

Service Type: Any

Action: Permit

Ports:  ex(1,2,4-6) Apply

**Note:**  
 ACL Wizard will create the access profile and rule automatically.  
 For advanced access profile/rule setting, you can manually configure it in Access Profile List.

Done Trusted sites | Protected Mode: Off 100%

DGS-1210-10P - Microsoft Internet Explorer provided by D-Link Australia

http://10.90.90.90

D-Link Building Networks for People

Smart

Save Tools Smart Wizard Online Help

DGS-1210-10P

- System
- Configuration
- QoS
- Security
- Monitoring
- ACL
  - ACL Configuration Wizard
  - Access Profile List
  - ACL Finder
- PoE
- Time-Based PoE
- LLDP

Access Profile List

Add ACL Profile Delete All

Profile ID	Owner Type	Profile Summary	Show Details	Show Rules	Delete
51	Voice VLAN	Source MAC			

CurrentMax Profile: 0/50, CurrentMax Rule: 0/240

Done Trusted sites | Protected Mode: Off 100%

DGS-1210-10P - Microsoft Internet Explorer provided by D-Link Australia

http://10.90.90.90

D-Link Building Networks for People

Smart

Save Tools Smart Wizard Online Help

DGS-1210-10P

- System
- Configuration
- QoS
- Security
- Monitoring
- ACL
  - ACL Configuration Wizard
  - Access Profile List
  - ACL Finder
- PoE
- Time-Based PoE
- LLDP

ACL Finder

ACL rule finder helps you identify any rule has been assigned to a specific port

Profile ID: Any Ports: [ ] Find

Profile ID	Access ID	Profile Type	Summary	Action
------------	-----------	--------------	---------	--------

Done Trusted sites | Protected Mode: Off 100%

DGS-1210-10P - Microsoft Internet Explorer provided by D-Link Australia

http://10.90.90.90

D-Link Building Networks for People

Smart

Save Tools Smart Wizard Online Help

DGS-1210-10P

- System
- Configuration
- QoS
- Security
- Monitoring
- ACL
  - ACL Configuration Wizard
  - Access Profile List
  - ACL Finder
- PoE
  - PoE Port Settings
  - PoE System Settings
- Time-Based PoE
- LLDP

PoE Port Settings

From Port: 1 To Port: 8 State: Enabled Time Range: N/A Priority: Normal Power Limit: Auto User Define:  (1.0-30.0w)

Apply Refresh

Port	State	Time Range	Priority	Power Limit	Power(W)	Voltage(V)	Current(mA)	Classification	Status
1	Enabled	N/A	Normal	Auto	0.0	0.0	0.0	N/A	POWER OFF
2	Enabled	N/A	Normal	Auto	0.0	0.0	0.0	N/A	POWER OFF
3	Enabled	N/A	Normal	Auto	0.0	0.0	0.0	N/A	POWER OFF
4	Enabled	N/A	Normal	Auto	0.0	0.0	0.0	N/A	POWER OFF
5	Enabled	N/A	Normal	Auto	0.0	0.0	0.0	N/A	POWER OFF
6	Enabled	N/A	Normal	Auto	0.0	0.0	0.0	N/A	POWER OFF
7	Enabled	N/A	Normal	Auto	0.0	0.0	0.0	N/A	POWER OFF
8	Enabled	N/A	Normal	Auto	0.0	0.0	0.0	N/A	POWER OFF

Done Trusted sites | Protected Mode: Off 100%

DGS-1210-10P - Microsoft Internet Explorer provided by D-Link Australia

http://10.90.90.90/

D-Link Building Networks for People

Save Tools Smart Wizard Online Help

DGS-1210-10P

- System
- Configuration
- QoS
- Security
- Monitoring
- ACL
- PoE
  - PoE Port Settings
  - PoE System Settings**
  - Time-Based PoE
  - LLDP

PoE System settings

System Power Threshold

System Setting Disconnect Method

System Power Status

System Budget Power	78 W
Support Total Power	0 W
Remainder Power	78 W
The ratio of system power supply	0 %

Note: If power disconnection method is set to deny next port, then the system can not utilize out of its maximum power capacity.

Done Trusted sites | Protected Mode: Off 100%

DGS-1210-10P - Microsoft Internet Explorer provided by D-Link Australia

http://10.90.90.90/

D-Link Building Networks for People

Save Tools Smart Wizard Online Help

DGS-1210-10P

- System
- Configuration
- QoS
- Security
- Monitoring
- ACL
- PoE
  - PoE Port Settings
  - PoE System Settings
  - Time Range Settings**
  - Time-Based PoE
  - LLDP

Time Range Setting

Time Range

Range Name

Date  From Day 2009 1 1 To Day 2009 1 1

Hours(0-24) Start Time 00 00 End Time 00 00

Weekdays  Mon  Tue  Wed  Thu  Fri  Sat  Sun  Select All Days

Note: If the End Time is before the Start Time the End Time will be set to the following day.

Total Entries: 0

Time Range Information

Range Name	Weekdays	From Day	To Day	Start Time	End Time

Done Trusted sites | Protected Mode: Off 100%

DGS-1210-10P - Microsoft Internet Explorer provided by D-Link Australia

http://10.90.90.90/

D-Link Building Networks for People

Save Tools Smart Wizard Online Help

DGS-1210-10P

- System
- Configuration
- QoS
- Security
- Monitoring
- ACL
- PoE
  - PoE Port Settings
  - PoE System Settings
  - Time-Based PoE
  - LLDP
    - LLDP Global Settings**
    - LLDP Remote Port Information
    - LLDP-MED Settings

LLDP Global Settings

LLDP  Enabled  Disabled

Message TX Hold Multiplier (2 - 10)

Message TX Interval (5 - 32768)  sec

LLDP Rainit Delay (1 - 10)  sec

LLDP TX Delay (1 - 8192)  sec

LLDP System Information

Chassis ID Subtype	macAddress
Chassis ID	00-26-5A-E9-0E-D7
System Name	
System Description	DGS-1210-10P 1.00.015

Done Trusted sites | Protected Mode: Off 100%

DGS-1210-10P - Microsoft Internet Explorer provided by D-Link Australia

http://10.90.90.90/

D-Link Building Networks for People

Save Tools Smart Wizard Online Help

DGS-1210-10P

- System
- Configuration
- QoS
- Security
- Monitoring
- ACL
- POE
- Time-Based PoE
- LLDP
  - LLDP Global Settings
  - LLDP Remote Port Information
  - LLDP-MED Settings

LLDP Remote Port Information

LLDP Remote Port Brief Table

Port: All

Remote Entities Count: 0

Entity	Port	Chassis ID Subtype	Chassis ID	Port ID Subtype	Port ID	Port Description
Remote Entities Count: 0						

Done

Trusted sites | Protected Mode: Off

100%

DGS-1210-10P - Microsoft Internet Explorer provided by D-Link Australia

http://10.90.90.90/

D-Link Building Networks for People

Save Tools Smart Wizard Online Help

DGS-1210-10P

- System
- Configuration
- QoS
- Security
- Monitoring
- ACL
- POE
- Time-Based PoE
- LLDP
  - LLDP Global Settings
  - LLDP Remote Port Information
  - LLDP-MED Settings

LLDP MED Settings

LLDP-MED Power PSE TLV Setting

From Port: 1 To Port: 8 Power PSE TLV: Disable

Port	Power PSE TLV
1	Enable
2	Enable
3	Enable
4	Enable
5	Enable
6	Enable
7	Enable
8	Enable

Done

Trusted sites | Protected Mode: Off

100%

DGS-1210-10P - Microsoft Internet Explorer provided by D-Link Australia

http://10.90.90.90/

D-Link Building Networks for People

Save Tools Smart Wizard Online Help

DGS-1210-10P

- System
- Configuration
- QoS
- Security
- Monitoring
- ACL
- POE
- Time-Based PoE
- LLDP

Save Configuration

Save Log

Device Information

Device Type	DGS-1210-10P	System Time	01/01/2009 00:47:32
System Name		System Up Time	0 days, 0 hours, 46 mins, 52 seconds
System Location		MAC Address	00-28-5A-E9-0E-D7
Boot Version	1.00.003	IP Address	10.90.90.90
Firmware Version	1.00.015	Subnet Mask	255.0.0.0
Protocol Version	2.001.004	Default Gateway	0.0.0.0
Hardware Version	A1	Trap IP	0.0.0.0
Serial Number	F3Y1A3000001	Login Timeout (minutes)	5

Device Status and Quick Configurations

RSTP	Disabled	SNMP Status	Disabled
Port Mirroring	Disabled	802.1x Status	Disabled
Storm Control	Disabled	802.1Q Management VLAN	Disabled
Safeguard Engine	Enabled	DHCP Client	Disabled
IGMP Snooping	Disabled	Jumbo Frame	Disabled
Power Saving	Enabled		

Done

Trusted sites | Protected Mode: Off

100%




DGS-1210-10P - Microsoft Internet Explorer provided by D-Link Australia  
http://10.90.90.90/

**D-Link**  
Building Networks for People

Save Tools Smart Wizard Online Help

- Reset
  - Reset System
  - Reboot Device
  - Configuration Backup & Restore
  - Firmware Backup & Upgrade
- Security
  - Monitoring
  - ACL
  - POE
  - Time-Based PoE
  - LLDP



### Device Information

<b>Device Information</b>			
Device Type	DGS-1210-10P	System Time	01/01/2009 00:47:32
System Name		System Up Time	0 days, 0 hours, 46 mins, 52 seconds
System Location		MAC Address	00-26-5A-E9-0E-D7
Boot Version	1.00.003	IP Address	10.90.90.90
Firmware Version	1.00.015	Subnet Mask	255.0.0.0
Protocol Version	2.001.004	Default Gateway	0.0.0.0
Hardware Version	A1	Trap IP	0.0.0.0
Serial Number	F3YT1A3000001	Login Timeout (minutes)	5

### Device Status and Quick Configurations

RSTP	Disabled	<a href="#">Settings</a>	SNMP Status	Disabled	<a href="#">Settings</a>
Port Mirroring	Disabled	<a href="#">Settings</a>	802.1X Status	Disabled	<a href="#">Settings</a>
Storm Control	Disabled	<a href="#">Settings</a>	802.1Q Management VLAN	Disabled	<a href="#">Settings</a>
Safeguard Engine	Enabled	<a href="#">Settings</a>	DHCP Client	Disabled	<a href="#">Settings</a>
IGMP Snooping	Disabled	<a href="#">Settings</a>	Jumbo Frame	Disabled	<a href="#">Settings</a>
Power Saving	Enabled	<a href="#">Settings</a>			

Trusted sites | Protected Mode: Off | 100%