



**Firmware Version:** 6.12.B001  
**Boot Code Version:** 1.00.010  
**MIB Version:** 6.12.B001  
**D-View Module Version:** N/A  
**Published:** Sep . 06, 2019

These release notes include important information about D-Link switch firmware revisions. Please verify that these release notes are correct for your switch:

- If you are installing a new switch, please check the hardware version on the device label; make sure that your switch meets the system requirement of this firmware version. Please refer to [Revision History and System Requirement](#) for detailed firmware and hardware matrix.
- If the switch is powered on, you can check the hardware version by typing "show switch" command via Telnet or by checking the device information page on the web graphic user interface.
- If you plan to upgrade to the new firmware release, please refer to the [Upgrade Instructions](#) for the correct firmware upgrade procedure.

For more detailed information regarding our switch products, please refer to [Related Documentation](#).

You can also download the switch firmware, D-View modules and technical documentation from <http://tsd.dlink.com.tw>.

## Content:

Upgrade Instructions: .....	4
Upgrade using CLI (via Telnet).....	4
Upgrade using Web-UI.....	5
Upgrade using D-Link Network Assistant.....	7
New Features:.....	11
Changes of MIB & D-View Module:.....	14
Changes of Command Line Interface: .....	16
Problem Fixed: .....	17
Known Issues: .....	24
Related Documentation: .....	24

## Revision History and System Requirement:

Firmware Version	Date	Model	Hardware Version
Runtime: v6.12.B001 Boot: 1.00.010	06- Sep.-19	DGS-1210 SERIES (DGS-1210-10/10P/10MP/20/26/28/29P/28MP /52/52MP)	F1
Runtime: v6.11.B034 Boot: 1.00.010	26- Aug.-19	DGS-1210 SERIES (DGS-1210-10/10P/10MP/20/26/28/29P/28MP /52/52MP)	F1
Runtime: v6.11.B033 Boot: 1.00.010	02- Aug.-19	DGS-1210 SERIES (DGS-1210-10/10P/10MP/20/26/28/29P/28MP /52/52MP)	F1
Runtime: v6.11.B032 Boot: 1.00.010	29- Jul.-19	DGS-1210 SERIES (DGS-1210-10/10P/10MP/20/26/28/29P/28MP /52/52MP)	F1
Runtime: v6.11.B031 Boot: 1.00.010	05- Jul.-19	DGS-1210 SERIES (DGS-1210-10/10P/10MP/20/26/28/29P/28MP /52/52MP)	F1
Runtime: v6.11.B030 Boot: 1.00.010	12- Jun.-19	DGS-1210 SERIES (DGS-1210-10/10P/10MP/20/26/28/29P/28MP /52/52MP)	F1
Runtime: v6.11.B029 Boot: 1.00.010	28- May.-19	DGS-1210 SERIES (DGS-1210-10/10P/10MP/20/26/28/29P/28MP /52/52MP)	F1
Runtime: v6.11.B028 Boot: 1.00.010	19- Apr.-19	DGS-1210 SERIES (DGS-1210-10/10P/10MP/20/26/28/29P/28MP /52/52MP)	
Runtime: v6.11.B027 Boot: 1.00.010	02- Apr.-19	DGS-1210 SERIES (DGS-1210-10/10P/10MP/20/26/28/29P/28MP /52/52MP)	F1
Runtime: v6.11.B026 Boot: 1.00.010	22- Feb.-19	DGS-1210 SERIES (DGS-1210-10/10P/10MP/20/26/28/29P/28MP /52/52MP)	F1
Runtime: v6.11.B025 Boot: 1.00.010	09- Jan.-19	DGS-1210 SERIES (DGS-1210-10/10P/10MP/20/26/28/29P/28MP /52/52MP)	F1
Runtime: v6.11.B024 Boot: 1.00.010	29- Nov.-18	DGS-1210 SERIES (DGS-1210-10/10P/10MP/20/26/28/29P/28MP /52/52MP)	F1
Runtime: v6.11.B023 Boot: 1.00.010	20- Nov.-18	DGS-1210 SERIES (DGS-1210-10/10P/10MP/20/26/28/29P/28MP /52/52MP)	F1
Runtime: v6.11.B022 Boot: 1.00.010	29- Oct.-18	DGS-1210 SERIES (DGS-1210-10/10P/10MP/20/26/28/29P/28MP /52/52MP)	F1
Runtime: v6.11.B021 Boot: 1.00.010	09- Oct.-18	DGS-1210 SERIES (DGS-1210-10/10P/10MP/20/26/28/29P/28MP /52/52MP)	F1
Runtime: v6.11.B020 Boot: 1.00.010	20- Jul.-18	DGS-1210 SERIES (DGS-1210-10/10P/10MP/20/26/28/29P/28MP /52/52MP)	F1

Runtime: v6.11.B019 Boot: 1.00.010	09- Jul.-18	DGS-1210 SERIES (DGS-1210-10/10P/10MP/20/26/28/29P/28MP /52/52MP)	F1
Runtime: v6.11.B018 Boot: 1.00.010	20- Jun.-18	DGS-1210 SERIES (DGS-1210-10/10P/10MP/20/26/28/29P/28MP /52/52MP)	F1
Runtime: v6.11.B017 Boot: 1.00.010	11- Jun.-18	DGS-1210 SERIES (DGS-1210-10/10P/10MP/20/26/28/29P/28MP /52/52MP)	F1
Runtime: v6.11.B016 Boot: 1.00.010	22- May.-18	DGS-1210 SERIES (DGS-1210-10/10P/10MP/20/26/28/29P/28MP /52/52MP)	F1
Runtime: v6.11.B015 Boot: 1.00.010	15- May.-18	DGS-1210 SERIES (DGS-1210-10/10P/10MP/20/26/28/29P/28MP /52/52MP)	F1
Runtime: v6.11.B014 Boot: 1.00.010	10- Apr.-18	DGS-1210 SERIES (DGS-1210-10/10P/10MP/20/26/28/29P/28MP /52/52MP)	F1
Runtime: v6.11.B013 Boot: 1.00.010	08- Mar.-18	DGS-1210 SERIES (DGS-1210-10/10P/10MP/20/26/28/29P/28MP /52/52MP)	F1
Runtime: v6.11.B012 Boot: 1.00.010	27- Feb.-18	DGS-1210 SERIES (DGS-1210-10/10P/10MP/20/26/28/29P/28MP /52/52MP)	F1
Runtime: v6.10.B012 Boot: 1.00.010	08- Jan.-17	DGS-1210 SERIES (DGS-1210-10/10P/10MP/20/26/28/29P/28MP /52/52MP)	F1
Runtime: v6.10.B011 Boot: 1.00.010	20- Dec.-17	DGS-1210 SERIES (DGS-1210-10/10P/10MP/20/26/28/29P/28MP /52/52MP)	F1
Runtime: v6.10.B010 Boot: 1.00.010	13- Dec.-17	DGS-1210 SERIES (DGS-1210-10/10P/10MP/20/26/28/29P/28MP /52/52MP)	F1
Runtime: v6.10.B009 Boot: 1.00.010	30- Nov.-17	DGS-1210 SERIES (DGS-1210-10/10P/10MP/20/26/28/29P/28MP /52/52MP)	F1
Runtime: v6.10.B008 Boot: 1.00.010	21- Nov.-17	DGS-1210 SERIES (DGS-1210-10/10P/10MP/20/26/28/29P/28MP /52/52MP)	F1
Runtime: v6.10.007 Boot: 1.00.010	20- Oct.-17	DGS-1210 SERIES (DGS-1210-10/10P/10MP/20/26/28/29P/28MP /52/52MP)	F1
Runtime: v6.00.B024 Boot: 1.00.009	16- Oct.-17	DGS-1210 SERIES (DGS-1210-10/10P/10MP/20/26/28/29P/28MP /52/52MP)	F1
Runtime: v6.00.B023 Boot: 1.00.009	02- Oct.-17	DGS-1210 SERIES (DGS-1210-10/10P/10MP/20/26/28/29P/28MP /52/52MP)	F1

Runtime: v6.00.B022 Boot: 1.00.009	22- Sep.-17	DGS-1210 SERIES (DGS-1210-10/10P/10MP/20/26/28/29P/28MP /52/52MP)	F1
Runtime: v6.00.B020 Boot: 1.00.009	30- Aug.-17	DGS-1210 SERIES (DGS-1210-10/10P/10MP/20/26/28/29P/28MP /52/52MP)	F1
Runtime: v6.00.B019 Boot: 1.00.009	11- Jul.-17	DGS-1210 SERIES (DGS-1210-10/10P/10MP/20/26/28/29P/28MP /52/52MP)	F1
Runtime: v6.00.B018 Boot: 1.00.009	07- Jun.-17	DGS-1210 SERIES (DGS-1210-10/10P/10MP/20/26/28/29P/28MP /52/52MP)	F1
Runtime: v6.00.B017 Boot: 1.00.009	04- May.-17	DGS-1210 SERIES (DGS-1210-10/10P/10MP/20/26/28/29P/28MP /52/52MP)	F1
Runtime: v6.00.016 Boot: 1.00.009	04- Mar.-17	DGS-1210 SERIES (DGS-1210-10/10P/10MP/20/26/28/29P/28MP /52/52MP)	F1

## Upgrade Instructions:

D-Link Smart Switches support firmware upgrade via TFTP server. You can download the firmware from D-Link web site <http://tsd.dlink.com.tw>, and copy the downloaded firmware to the TFTP server folder. Please make sure that the TFTP server is accessible from the switch via networks.

### Upgrade using CLI (via Telnet)

1. Make sure the network connection between the switch and PC is active.
2. Use software that supports telnet, for example, HyperTerminal or Telnet command in Microsoft Windows, to connect to the switch. If you are using Telnet command, type the command followed by the switch IP address, eg. `telnet 10.90.90.90`.
3. The logon prompt will appear.

The switch will prompt the user to enter his/her username and password. It should be noted that upon the initial connection, both the default user name and password are **admin**.

To upgrade the switch firmware, execute the following command:

Command	Function
download{firmware_fromTFTP tftp://ip-address/filename   cfg_fromTFTP tftp://ip-address/filename}	Download firmware file from the TFTP server to the switch.

When completing firmware upgrade, the following messages will pop up.

Device will reboot after firmware upgraded successfully  
Image upgraded successfully

4. Execute the following command to check the firmware version and switch's information.

Command	Function
show switch	Display the information of current firmware and boot version.

## Example:

### 1. **DGS-1210 SERIES:**

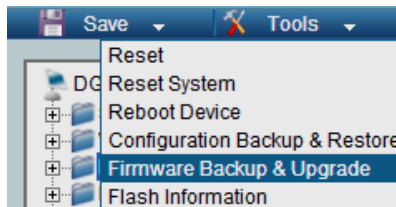
```
Command: download firmware_fromTFTP tftp://10.90.90.91
DGS-1210-F1-SERIES-F1-6-11-B034.hex
Device will reboot after firmware upgraded successfully
Image upgraded successfully
```

### 2. **DGS-1210 SERIES:**

```
Command: show switch
DGS-1210 SERIES> show switch
System name                :
System Contact              :
System Location             :
System up time              : 0 days, 0 hrs, 2 min, 31 secs
System Time                 : 01/01/2017 00:02:19
System hardware version     : F1
System firmware version     : 6.11.B034
System boot version         : 1.00.010
System serial number        : QBDGS12105200
MAC Address                 : 9C-D6-43-AA-58-77
```

## Upgrade using Web-UI

1. Connect a workstation installed with java SE runtime environment to any switch port of the device.
2. Open the web browser from the workstation and enter the IP address of the switch. The switch's default IP address is 10.90.90.90.
3. Enter administrator's password when prompted. The password is **admin** by default.
4. To update switch's firmware or configuration file, select **Tools > Firmware Backup & Upgrade** from the banner.

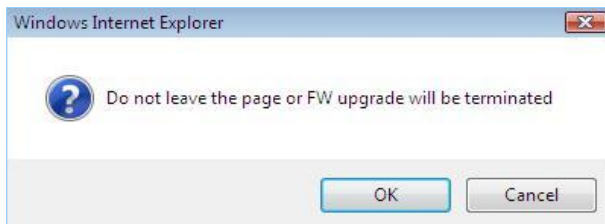


5. Two methods can be selected : **HTTP** or **TFTP**

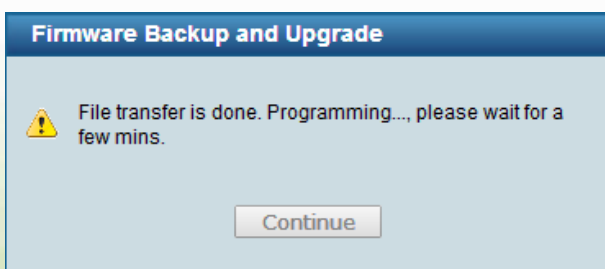
6. Select **HTTP** to upgrade the firmware to or from your local drive of PC.
  - a. Click **Browse** to browse your inventories for a saved firmware file
  - b. Click **Upgrade** after selecting the firmware file you want to restore
  - c. Click **OK** to continue with firmware upgrade

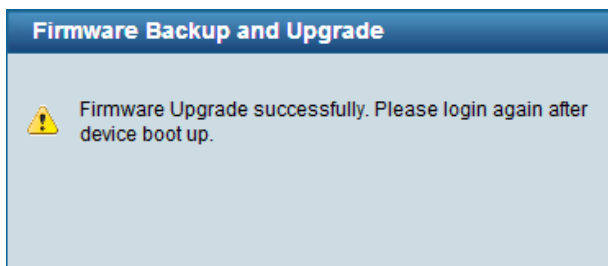


- d. Click **OK** to continue with firmware upgrade

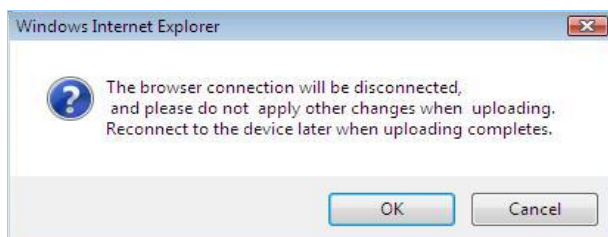


- e. Wait until the "Firmware Upgrade Successful" message pops up and login again after device boots up.

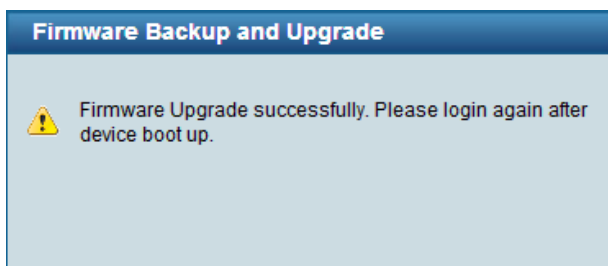




7. Select **TFTP** to upgrade the firmware to or from a remote TFTP server.
  - a. Enter the name of the firmware file located on the TFTP server
  - b. Click **Upgrade** after selecting the firmware file you want to restore
  - c. Click **OK** to continue with firmware upgrade



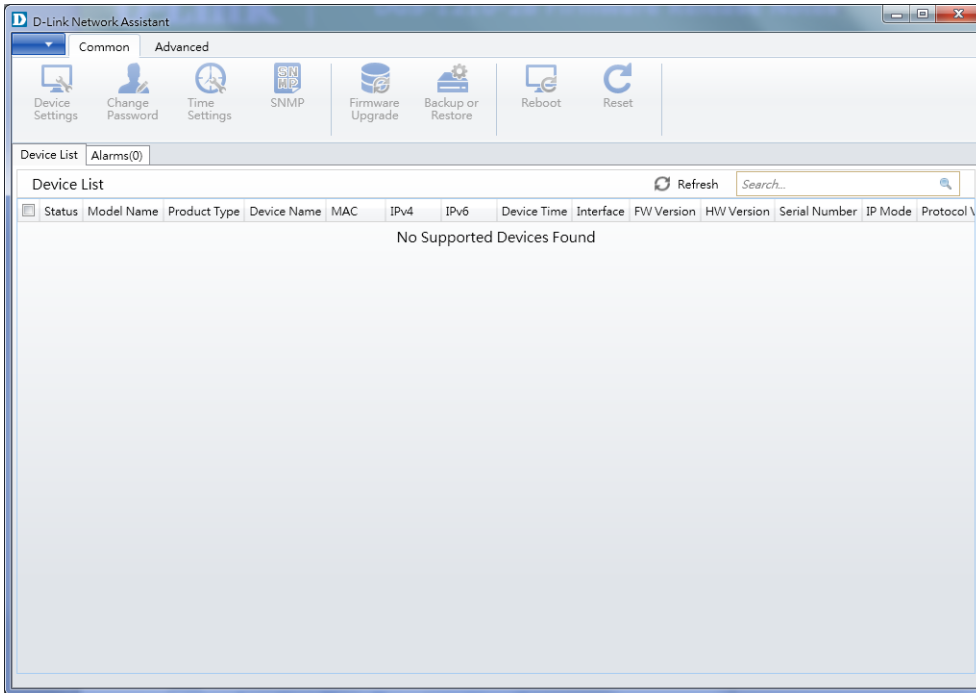
- d. Wait until the firmware upgrade ends and login again after device boots up.



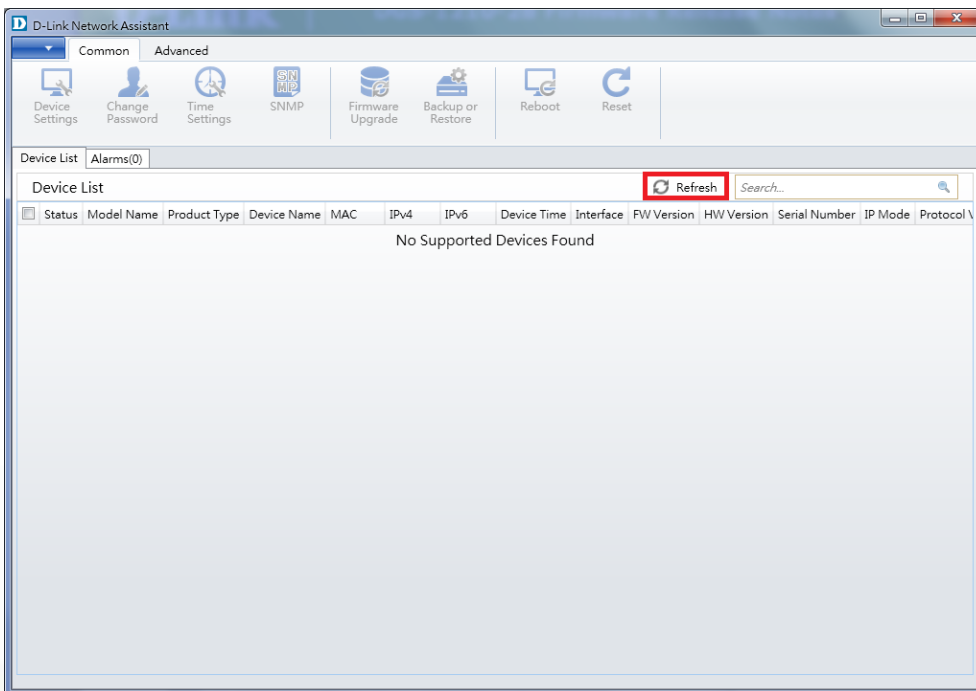
### Upgrade using D-Link Network Assistant

1. Connect a workstation installed with java SE runtime environment to any switch port of the device
2. Execute D-Link Network Assistant



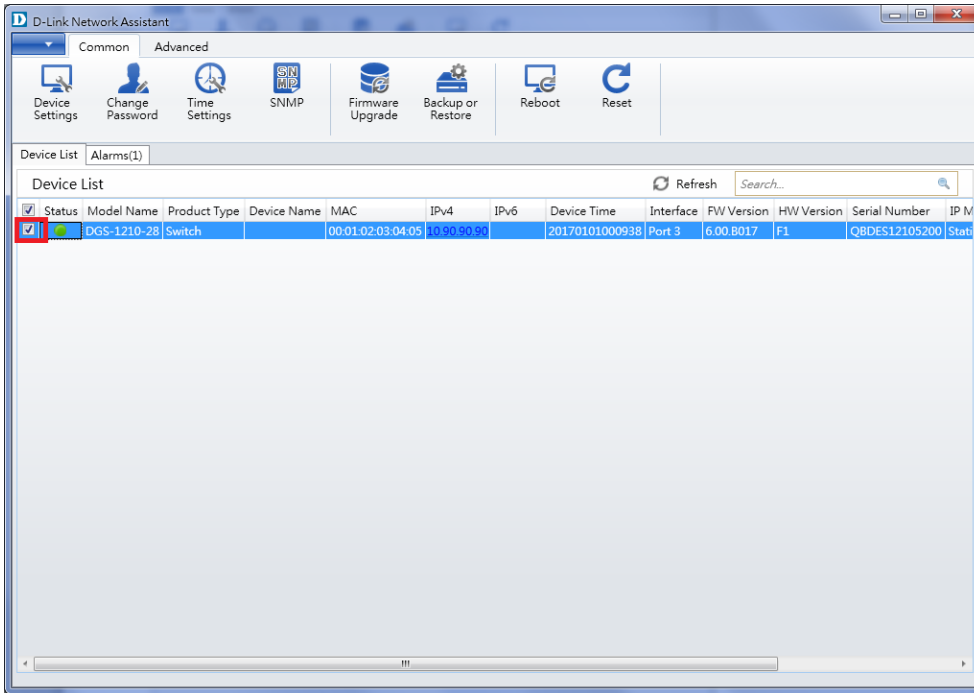


3. Click Refresh button to search target switch

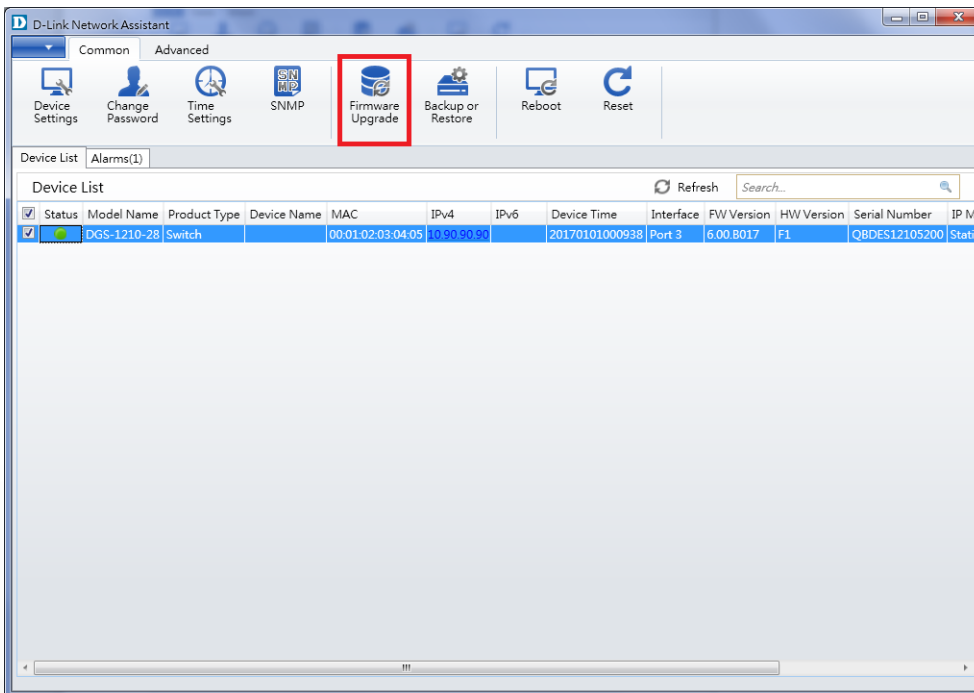


4. Single click the icon of the column to choose the target switch

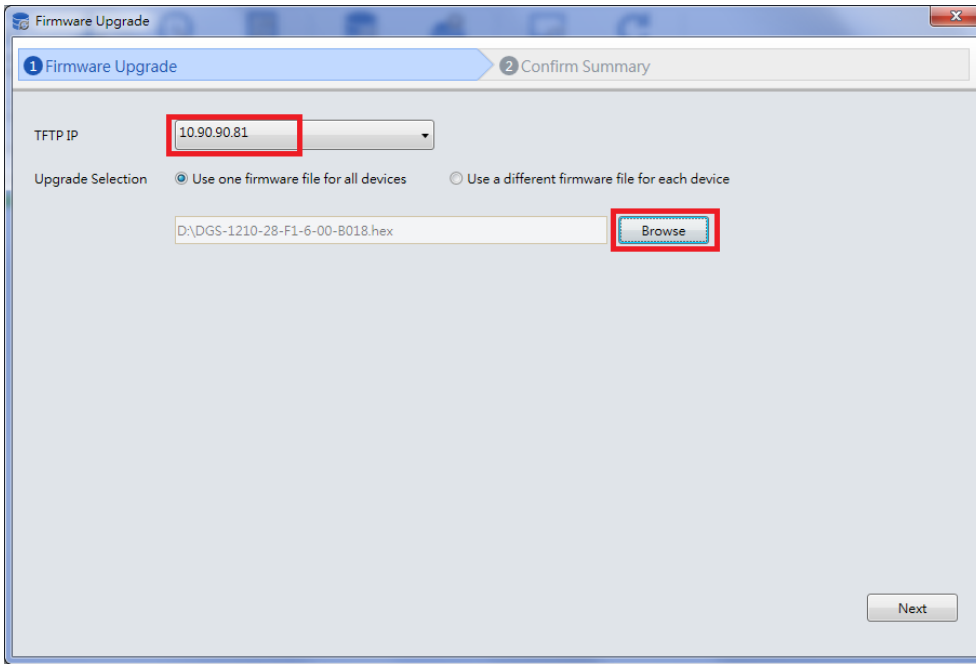




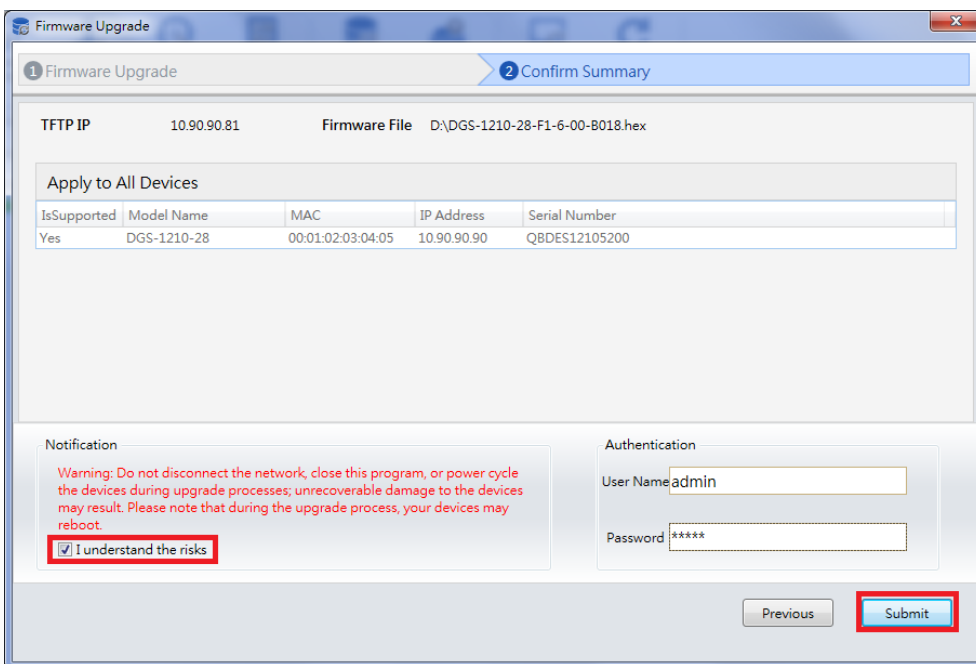
## 5. Click Firmware Upgrade button



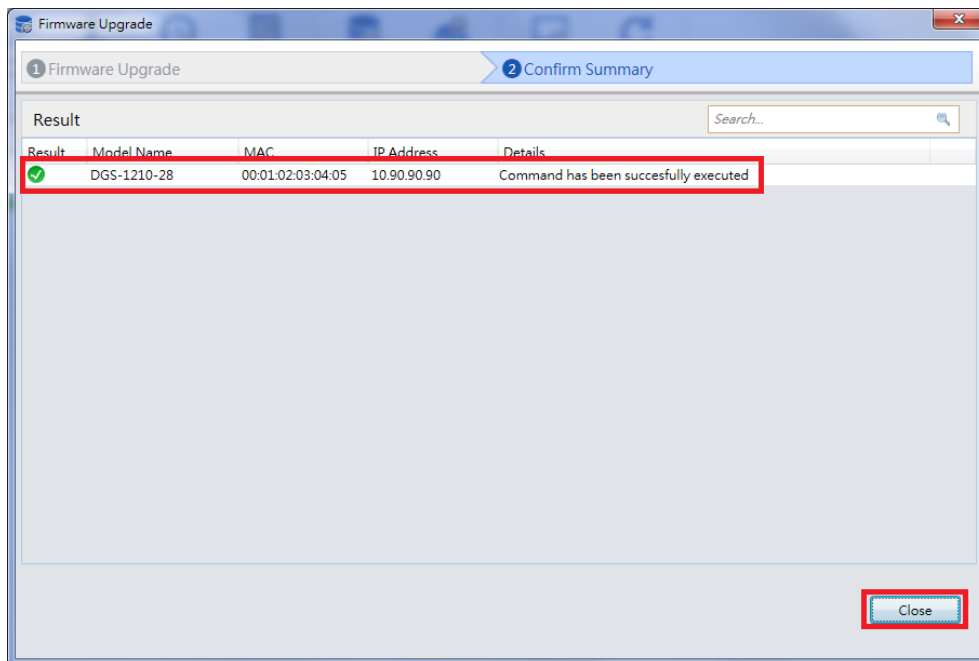
6. Select PC IP address is used to connect the target switch, then click Browse button and select the firmware file (Model name\_HW ver.\_FW ver.hex) on your local hard drive.



7. Click the checkbox and click "Submit" button to start firmware upgrade.



8. Once the message changed to success, click "Close" button to complete and exit the firmware upgrade.



### New Features:

Firmware Version	New Features
V6.12.B001	<ol style="list-style-type: none"> <li>SSH migration to openSSH v7.8p1 supporting the following encryption algorithm. <ul style="list-style-type: none"> <li>3des-cbc</li> <li>aes128-cbc</li> <li>aes192-cbc</li> <li>aes256-cbc</li> <li>aes128-ctr</li> <li>aes192-ctr</li> <li>aes256-ctr</li> <li><a href="mailto:aes128-gcm@openssh.com">aes128-gcm@openssh.com</a></li> <li><a href="mailto:aes256-gcm@openssh.com">aes256-gcm@openssh.com</a></li> <li><a href="mailto:chacha20-poly1305@openssh.com">chacha20-poly1305@openssh.com</a></li> </ul> </li> </ol>
V6.11.B034	N/A
V6.11.B033	<ol style="list-style-type: none"> <li>Issue No: HQ20190717000007  Subject: [DGS-1210/F1/6.11] doesn't allow to create a lacp gr even if</li> </ol>

	<p>LBD is disabled globally.[DI20190717000002-Japan]</p> <p>Description: Change the UI on LBD to be able to disable these port state w/o enabling LBD globally</p>
V6.11.B032	<p>1. Issue No: HQ20190717000007</p> <p>Subject: [DGS-1210/F1/6.11] doesn't allow to create a lacp gr even if LBD is disabled globally.[DI20190717000002-Japan]</p> <p>Description: LACP aggregation can not be enabled if LBD is disabled globally with specific port is enabled</p>
V6.11.B031	<p>1. Get CPU utilization and Memory utilization by MIB</p> <p>2. Change FDB aging time by web and MIB</p>
V6.11.B030	N/A
V6.11.B029	N/A
V6.11.B028	N/A
V6.11.B027	N/A
V6.11.B026	N/A
V6.11.B025	N/A
V6.11.B024	N/A
V6.11.B023	N/A
V6.11.B022	N/A
V6.11.B021	N/A
V6.11.B020	N/A
V6.11.B019	N/A
V6.11.B018	N/A
V6.11.B017	N/A
V6.11.B016	N/A
V6.11.B015	N/A

V6.11.B014	N/A
V6.11.B013	N/A
V6.11.B012	<ol style="list-style-type: none"> <li>1. Support SSH public key upload</li> <li>2. Support PD Alive (ASV v2.1)</li> </ol>
V6.10.B012	N/A
V6.10.B011	N/A
V6.10.B010	N/A
V6.10.B009	N/A
V6.10.B008	N/A
V6.10.007	<ol style="list-style-type: none"> <li>1. Support Smart F1 series total image for running image.</li> <li>2. Support TLS feature.(TLS support version v1.0/v1.1/v1.2)</li> <li>3. Firmware upgrade behavior change to update backup image and no auto reboot. DNA UTILITY FW upgrade behavior:               <ol style="list-style-type: none"> <li>01. DNA Firmware upgrade to backup image.</li> <li>02. After firmware upgrade finish, DUT will auto change boot image to backup image ID then auto reboot.</li> </ol> </li> <li>4. Boot code update DDP version to 0.26.</li> <li>5. IPv4 and IPv6 support "Edit" feature.</li> <li>6. Add Configuration information page.</li> </ol>
V6.00.B024	N/A
V6.00.B023	N/A
V6.00.B022	N/A
V6.00.B020	N/A
V6.00.B019	N/A
V6.00.B018	N/A

V6.00.B017	N/A
V6.00.016	First Release

## Changes of MIB:

The new features of MIB file. For detailed changes of MIB content, please refer to the modification history in each MIB file.

Firmware Version	MIB File	New Features
V6.12.B001	DGS-1210-F1-SERIES-FX-6-12-B001.mib	N/A
V6.11.B034	DGS-1210-F1-SERIES-FX-6-11-B031.mib	N/A
V6.11.B033	DGS-1210-FXseries-6-11-B031.mib	N/A
V6.11.B032	DGS-1210-FXseries-6-11-B031.mib	N/A
V6.11.B031	DGS-1210-FXseries-6-11-B031.mib	<ol style="list-style-type: none"> <li>1. Get CPU utilization and Memory utilization by MIB</li> <li>2. Change FDB aging time by web and MIB</li> </ol>
V6.11.B030	DGS-1210-FXseries-6-00-011.mib	N/A
V6.11.B029	DGS-1210-FXseries-6-00-011.mib	N/A
V6.11.B028	DGS-1210-FXseries-6-00-011.mib	N/A
V6.11.B027	DGS-1210-FXseries-6-00-011.mib	N/A
V6.11.B026	DGS-1210-FXseries-6-00-011.mib	N/A
V6.11.B025	DGS-1210-FXseries-6-00-011.mib	N/A
V6.11.B024	DGS-1210-FXseries-6-00-011.mib	N/A
V6.11.B023	DGS-1210-FXseries-6-00-011.mib	N/A

V6.11.B022	DGS-1210-FXseries-6-00-011.mib	N/A
V6.11.B021	DGS-1210-FXseries-6-00-011.mib	N/A
V6.11.B020	DGS-1210-FXseries-6-00-011.mib	N/A
V6.11.B019	DGS-1210-FXseries-6-00-011.mib	N/A
V6.11.B018	DGS-1210-FXseries-6-00-011.mib	N/A
V6.11.B017	DGS-1210-FXseries-6-00-011.mib	N/A
V6.11.B016	DGS-1210-FXseries-6-00-011.mib	N/A
V6.11.B015	DGS-1210-FXseries-6-00-011.mib	N/A
V6.11.B014	DGS-1210-FXseries-6-00-011.mib	N/A
V6.11.B013	DGS-1210-FXseries-6-00-011.mib	N/A
V6.11.B012	DGS-1210-FXseries-6-00-011.mib	N/A
V6.10.B012	DGS-1210-FXseries-6-00-011.mib	N/A
V6.10.B011	DGS-1210-FXseries-6-00-011.mib	N/A
V6.10.B010	DGS-1210-FXseries-6-00-011.mib	N/A
V6.10.B009	DGS-1210-FXseries-6-00-011.mib	N/A
V6.10.B008	DGS-1210-FXseries-6-00-011.mib	N/A
V6.10.007	DGS-1210-FXseries-6-00-011.mib	N/A
V6.00.B024	DGS-1210-FXseries-6-00-011.mib	N/A
V6.00.B023	DGS-1210-FXseries-6-00-011.mib	N/A
V6.00.B022	DGS-1210-FXseries-6-00-011.mib	N/A
V6.00.B020	DGS-1210-FXseries-6-00-011.mib	N/A



V6.00.B019	DGS-1210-FXseries-6-00-011.mib	N/A
V6.00.B018	DGS-1210-FXseries-6-00-011.mib	N/A
V6.00.B017	DGS-1210-FXseries-6-00-011.mib	N/A
V6.00.016	DGS-1210-FXseries-6-00-011.mib	First Release

## **Changes of Command Line Interface:**

The section below only shows command line changes that may bring backward compatibility issues with configuration settings for previous version of firmware. Any new feature commands that do not have backward compatibility issues are not included in the below section.

<b>Firmware Version</b>	<b>Changes</b>
V6.12.B001	N/A
V6.11.B034	N/A
V6.11.B033	N/A
V6.11.B032	N/A
V6.11.B031	N/A
V6.11.B030	N/A
V6.11.B029	N/A
V6.11.B028	N/A
V6.11.B027	N/A
V6.11.B026	N/A
V6.11.B025	N/A
V6.11.B024	N/A
V6.11.B023	N/A
V6.11.B022	N/A
V6.11.B021	N/A
V6.11.B020	N/A
V6.11.B019	N/A

V6.11.B018	N/A
V6.11.B017	N/A
V6.11.B016	N/A
V6.11.B015	N/A
V6.11.B014	N/A
V6.11.B013	N/A
V6.11.B012	N/A
V6.10.B012	N/A
V6.10.B011	N/A
V6.10.B010	N/A
V6.10.B009	N/A
V6.10.B008	N/A
V6.10.007	N/A
V6.00.B024	N/A
V6.00.B023	N/A
V6.00.B022	N/A
V6.00.B020	N/A
V6.00.B019	N/A
V6.00.B018	N/A
V6.00.B017	N/A
V6.00.016	First Release

## Problem Fixed:

---

Firmware Version	Problems Fixed
V6.12.B001	<ol style="list-style-type: none"> <li>Issue No: HQ20170518000019 Subject: [Urgent] SSH version upgrade or patch [IMA20170518000001-Africa]</li> <li>Issue No: HQ20190319000011 Subject: [Medium] Can't connect through SSH on OpenSSH 7.6 [DEUR20190319000001-Eastern Europe].</li> </ol>

V6.11.B034	<p>1. Issue No: HQ20190821000005</p> <p>Subject: DGS-1210 Issue with change Gateway[DRU20190820000002-Russia]</p> <p>Description: Change gateway from web page and saved the setting. But after reboot, gateway is not saved.</p>
V6.11.B033	N/A
V6.11.B032	<p>1. Issue No: HQ20190716000008 Subject: [DGS-1210/F1/6.11] JP UI / relate to DI20180320000007[DI20190716000002-Japan] Description: Fix some wording for Japanese multi-language</p> <p>2. Issue No: HQ20190704000007 Subject: Bandwidth control issue.[IMA20190623000001-Middle East] Description: Bandwidth control is not stable on DGS-1210-52.</p> <p>3. Issue No: HQ20190724000006 Subject: DGS-1210-28P rev F. issue with LBD + STP[DRU20190723000003-Russia] Description: It shows error when enable STP on the condition that LBD is enabled globally with all port is disabled.</p>
V6.11.B031	<p>1. Issue No: N/A Subject: LACP failed if STP is enabled Description: LACP failed if STP is enabled. This issue only happened on f/w 6.11.B030.</p>
V6.11.B030	<p>1. Issue No: HQ20190522000004 Subject: LBD does not work[DI20190522000003-Japan] Description: BPDU packet still loop under LBD vlan based mode.</p>
V6.11.B029	<p>1. Issue No: HQ20190513000007 Fixed the issue for Fan turning speed cause loud sound[DI20190513000005-Singapore].</p>
V6.11.B028	<p>1. Issue No: HQ20190411000006 Subject: DGS-1210-52 F1 issue with Bandwidth Control and reboot[DRU20190410000002-Russia] Description: DGS-1210-52 reboot if setting bandwidth control function</p>
V6.11.B027	<p>1. Issue No: HQ20190327000011 Subject: DGS-1210-52 issue with terminal window size[DRU20190326000003-Russia] Description: Switch reboot if login by telnet with terminal window size hight=31.</p>
V6.11.B026	<p>1. Issue No: HQ20190215000009 Subject: DGS-1210-xx - STP can't be enabled, when WebGUI = GERMAN[DEUR20190215000001-Central Europe] Description: STP can not be enabled if log in with german language. Besides, "Save Config" is translated to wrong german language.</p>
V6.11.B025	<p>1. Issue No: HQ20180515000007 Subject: DGS-1210 rev.F1 management loss [DRU20180514000002-Russia] Description: Switch loss management. It failed to access switch by Ping or web.</p>

V6.11.B024	<p>1. Issue No: HQ20180111000003          Subject: DGS-1210-10P F1 issue with DGS-712 E1[DRU20180109000001-Russia]          Description: Fiber port is not able to link up if using transceiver DGS-712 E1/F1.</p>
V6.11.B023	<p>1. Issue No: HQ20180827000011          Subject: Issue with QOS bandwidth.[DUSA20180801000003-Canada]          Description: The bandwidth control Tx/Rx rate does not work as setting if test by speed test utility. The deviation is too large and unstable.</p>
V6.11.B022	<p>1. Issue No: HQ20180921000006          Subject: DGS-1210-52 issue with default gateway issue [DRU20180920000002-Russia]          Description: Switch might not reply and transmit packet to gateway as configured by Static Route setting.          It might caused Ping failed if PING is not in the same IP interface.</p> <p>2. Issue No: HQ20181002000004          Subject: DGS-1210-10MP F1 default gateway issue [DRU20181002000002-Russia]          Description: After DUT got ip address, it ping DHCP Server and try to resolve not default gateway address, but address from giaddr field, relay agent ip address. So, DUT can't access any host outside it's network</p> <p>3. Issue No: HQ20181009000013          Subject: http and telnet access to management ip address fails via different network segment.[DI20181005000005-Japan]          Description: http and telnet access to management ip address fails via different network segment</p> <p>4. Issue No: HQ20181023000006          Subject: DGS-1210 F1 doesn't check client's mac in dhcp packets from server[DRU20181022000001-Russia]          Description: DGS-1210 F1 doesn't check client's mac address field in DHCP OFFER/ACK packets, it checks only Transaction ID.          Every 3-4 reboots switches sends the same sequence of transaction ID, and if we turn on several switches at one time, some of them get ip address for another switch.</p>
V6.11.B021	<p>1. Issue No: HQ20180612000008          Subject: DGS-1210 revF management (ICMP) issues[DEUR20180601000002-South Europe]          Description: Ping failed form link partner switch to DGS-1210 if changing LA from static mode to LACP mode.</p>
V6.11.B020	<p>1. Issue No: HQ20180710000007          Subject: DGS-1210-52 issuw with duplicating ping reply[DRU20180709000001-Russia]          Description: DGS-1210-52 duplicate ping reply</p>
V6.11.B019	<p>1. Issue No: HQ20180517000012          Subject: Multiple Problem report[DI20180508000008-Singapore]          Description: The gateway setting is reset to 0.0.0.0 after enable ASV mode.</p>
V6.11.B018	<p>1. Issue No: HQ20180611000004          Subject: DGS-1210 rev.F1 stp and lbd settings conflict[DRU20180608000002-Russia]          Description: if globally enable stp &amp; lbd, stp becomes disabled after reboot.</p>
V6.11.B017	<p>1. Issue No: HQ20180530000015          Subject: DGS-1210-52 issue with inter-vlan routing[DRU20180529000003-Russia]          Description: switch send "ICMP Redirect" packet when pc1 ping pc2 with</p>

	inter-vlan routing
V6.11.B016	<p>1. Issue No: HQ20180517000001  Subject: Unreadable error message in DGS-1210-28 web interface[DUSA20180516000005-USA]  Description: Get an error prompted from Power Saving Settings page after an attempt to enable "LED Shut-Off" on one port</p>
V6.11.B015	<p>1. Issue No: HQ20180425000020  Subject: Default Priority setting does not apply for ingress untagged packets[DI20180425000010-Japan]  Description: The 802.1p priority setting is not added to untagged packets as setting expected.</p> <p>2. Issue No: HQ20180412000003  Subject: DGS-1210-xx G-Rev -Issue with DHCP &amp; VoiceVLAN[DEUR20180406000006-Central Europe]  Description: Switch don't get IP from DHCP server via voice VLAN as expected, but get IP via default vlan.</p> <p>3. Issue No: HQ20180425000019  Subject: It adds unneeded VLAN tag to mirror packets[DI20180425000008-Japan]</p>
V6.11.B014	<p>1. Issue No: HQ20180327000002  Subject: IP Port Smart Binding cannot work with Asymmetric VLAN[DI20180326000002-Singapore]  Description: IMPB black list entry is not kept blocked if switching to Asymmetric VLAN.</p>
V6.11.B013	<p>1. Issue No: HQ20180222000006  Subject: DGS-1210 F1 issue with voice vlan[DRU20180221000002-Russia]  Description: Devices in static VLAN and voice vlan are unavailable to ping to each other</p> <p>2. Issue No: HQ20180110000006  Subject: DGS-1210-28 losses pings to their management ips for several minutes[DEUR20171218000004-Central Europe]  Description: The switches losses pings to their management ips for several minutes. This issue occurs not regularly, sometime once a day, something multiple time, sometime not at all.</p> <p>3. Issue No: HQ20180227000009  Subject: voice vlan with trunk uplink[IMA20180225000001-Middle East]  Description: CISCO IP Phone 7962 can not get IP from DHCP server if connect to Voice Vlan Dynamic port.</p> <p>4. issue No: HQ20180319000002  Subject: Static MAC settings[DLA20180316000001-Latin America]  Description: Static MAC function does not work correctly.</p>
V6.11.B012	<p>1. Forward multicast traffic 01:00:5e:00:00:00 (224.0.0.0) ~ 01:00:5e:00:00:ff (224.0.0.255) even multicast filtering is enabled. (DHQ requested)</p>
V6.10.B012	<p>1. Issue No: HQ20171117000011  Subject: DGS-1210-10P LLDP for PoE/PoE+ DLL classification and power allocation[DEUR20171115000006-Central Europe]  Description: Fix 3 LLDP issues as below (there are 5 issues reported, but items a &amp; b are not bugs, so leave them)</p> <ul style="list-style-type: none"> <li>(c) always sends PSE MDI power state = disabled(0)</li> <li>(d) send Power class = 0, which is an invalid value</li> <li>(e) may send a stale (non-zero) PD requested power value and PSE</li> </ul>

	<p>allocated power value when it no longer supplies power</p> <p>2. Issue No: HQ20171228000002          Subject: DGS-1210-Series issue with IPv6 &amp; Log[DEUR20171213000003-Central Europe]          Description: Wrong IPv6 address is shown in syslog message when auto logout</p> <p>3. Issue No: HQ20171225000006          Subject: [DGS-1210/C1/F1] doesn't respond to Syn after 3way x 2,000 / relate to DI20171110000003[DI20171221000008-Japan]          Description: DUT become no response to Syn after TCP 3way handshake 2000 times.</p> <p>4. Fix the issue that wrong port information is displayed on console while typing "debug info" by telnet.</p>
V6.10.B011	<p>[HQ20171220000009] DGS-1210 F1 Series Loopback detection behavior does not fit D-Link LBD v0.43 request, that request DUT need to confirm receive CTP interface LBD state enable/disable first.          When DGS-1210 F1 receive CTP interface LBD state enable, the DUT just block this receive interface by LBD function.          When DGS-1210 F1 receive CTP interface LBD state disable, the DUT will block sender CTP interface by LBD function.</p>
V6.10.B010	<p>1. HQ20170802000016 [DGS-1210/F1] Cable Length (meters)[DI20170802000007-Japan]          --Fix notice wording (English &amp; Japanese) on cable diagnostic web page as required.</p>
V6.10.B009	<p>1. 53602: When we change boot up image ID first then execute SSL web page firmware upgrade, the DUT will no reply after upgrade finish.          2. 53713: [Auto Test] The DUT enable SSL/TLS and execute firmware upgrade 2 times, the DUT will no reply.          3. Cablediag Multi-language</p>
V6.10.B008	<p>1. Issue No:HQ20171003000003          DGS-1210-52 issue with SNMP[DRU20171002000004-Russia] (fixed in 6.00.B026)          2. Issue No:HQ20171108000018          DGS-1210 F1 issue with localization[DRU20171108000002-Russia] (fixed in 6.00.B027)          3. Modify notice wording on Cable Diagnostic web page.          4. NTP setting return incorrect value to DNA utility.          5. User setting is always updated to config-1 by DNA utility. It should be updated to current boot-up config instead of config-1 all the way.          6. Issue No: DI20171110000003          It does not response to HTTP and SSH(fixed TCP abnormal handling issue)</p>
V6.10.007	N/A
V6.00.B025	<p>1. Issue No: HQ20171018000010          Special character issue in System name[IMA20171017000005- India]          2.Issue No: HQ20170801000012          [DGS-1210/F1] won't send arp/icmp after link down/up.[DI20170728000010-Japan]</p>
V6.00.B024	<p>1. Issue No: HQ20171003000003          DGS-1210-52 issue with SNMP[DRU20171002000004-Russia]</p>



V6.00.B023	<ol style="list-style-type: none"> <li>Issue ID: HQ20170825000004 [DGS-1210/F1] Japanese UI Translation[DI20170825000001-Japan]</li> <li>Issue ID: HQ20170801000012 [DGS-1210/F1] won't send arp/icmp after link down/up.[DI20170728000010-Japan](It's not fixed completely)</li> </ol>
V6.00.B022	1.D-Link update whole Japanese Translation wording.
V6.00.B020	<ol style="list-style-type: none"> <li>HQ20170804000002 [DGS-1210/F1] ipv4 route[DI20170802000001-Japan]</li> <li>HQ20170728000016 How can we save logs "On Demand?"</li> <li>HQ20170803000021 [DGS-1210/F1] filters PIM IPv6 Bootstrap under Filter Unregister Group.[DI20170802000009-Japan]</li> <li>HQ20170803000020 PIM Bootstrap packet was filtered</li> <li>HQ20170801000009 [DGS-1210/F1] for what about IPv6 Neighbor Settings</li> <li>HQ20170803000022 [DGS-1210/F1] doesn't respond for IPv6.[DI20170802000005-Japan]</li> <li>HQ20170802000014 [DGS-1210/F1] crashes by https access via IPv6.[DI20170801000005-Japan]</li> <li>HQ20170728000015 [DGS-1210/F1] doesn't allow to add IPv6 neighbor.[DI20170728000007-Japan]</li> <li>HQ20170728000010 [DGS-1210/F1] Sanitizing for input tag[DI20170728000008-Japan]</li> <li>HQ20170801000012 [DGS-1210/F1] won't send arp/icmp after link down/up.[DI20170728000010-Japan] (It's not fixed completely)</li> <li>HQ20170728000009 [DGS-1210/F1] doesn't maintain ipv6 by Reset function.[DI20170728000005-Japan]</li> <li>HQ20170808000007 [DGS-1210/F1] Topology changed while showing FDB.[DI20170803000005-Japan]</li> <li>HQ20170802000015 [DGS-1210F1] doesn't accept network address.[DI20170802000010-Japan]</li> </ol>
V6.00.B019	<ol style="list-style-type: none"> <li>Issue No: HQ20170703000009 Some problems with DGS-1210 SERIES[DGC20170703000005-China]</li> </ol>
V6.00.B018	<ol style="list-style-type: none"> <li>Fix DRU20170602000003-Russia set Voice Vlan Mode error</li> <li>HQ20170602000021 ASV 2.0 unable to fully recognize onvif packet in fragment.</li> </ol>
V6.00.B017	<ol style="list-style-type: none"> <li>Fix HQ20170503000007 SOID duplicated with DGS-1210-52</li> </ol>



V6.00.016

First Release

\* D-Link tracking number is enclosed in ()

## Known Issues:

Firmware Version	Issues	Workaround
V6.00.016~ V6.12.B001	<p><b>Limitation:</b></p> <ol style="list-style-type: none"> <li>[VBG16120039] MAC_Address_Collision_Test_1K~16K_Random_MAC_Addresses test. DGS-1210 series Rev.F1 mac address learning lose rate over 1%. DGS-1210-10/10P/10MP/20/26/28/29P/28MP forwarding table support maximum size is 8K, only DGS-1210-52/52MP is support 16K. DGS-1210-28/28P/28MP/26/10/10P/10MP/20(3K:2960,4K:3865,5K:4681,6K:5393,7K:6055,8K:6552) DGS-1210-52/52MP(6K:5898,7K:6859,8K:7334,9K:8536,10K:9361,11K:10080,12K:10689,13K:11411,14K:11976,15K:12501,16K:13074)</li> <li>[VBG17010021] DGS-1210 Rev.F1 CPU interface does not support Jumbo Frame.</li> <li>[VBG17010043] When enable/disable EEE, the DUT interface will link down/up</li> <li>[VBG17030260] The DUT firmware upgrade to stable state will over Chrome DNA v3.0.2.7 wait time and cannot display upgrade result. DNA 2.0.2.4 install version does not exist this issue. Firmware upgrade does valid, just over Chrome DNA Utility waiting time.</li> <li>[VBG17030261] The DUT SFP interface does not support in loader mode.</li> <li>[VBG17030262] IPC PD connect to DUT, after DUT reboot it will lose IPC first hello packet it caused DUT cannot detect IPC device; it should be complete reboot program then enable POE.</li> </ol> <p><b>Spec Issue:</b></p> <ol style="list-style-type: none"> <li>[VBG16101311] DGS-1210 series Rev.F1 does not support SNMP warm start trap.</li> <li>[VBG17010055]LLDP Protocol Identity parameter is not correct at lldp packet. Ex: set all Protocol Identity -&gt; unknown protocol</li> </ol>	None

## Related Documentation:

- DGS-1210 SERIES Series User Manual
- DGS-1210 SERIES Series Getting Started Guide