

Configure [X]

Management Local Port Global Port Virtual Server

IP address 10 . 0 . 0 . 1

SubNetmask 255 . 255 . 255 . 0

☒ Do not distribute IP address to local computer:

☐ Distribute IP addresses to local computer:

Continuous IP address pool starts at

192 . 168 . 0 . 2

Number of IP address in pool 32

Save Cancel

Configure [X]

Management | Local Port | Global Port | Virtual Server

☒ Obtain global port configuration automatically
☐ Set static global port configuration

IP address 203 . 45 . 69 . 232

SubNetmask 255 . 255 . 254 . 0

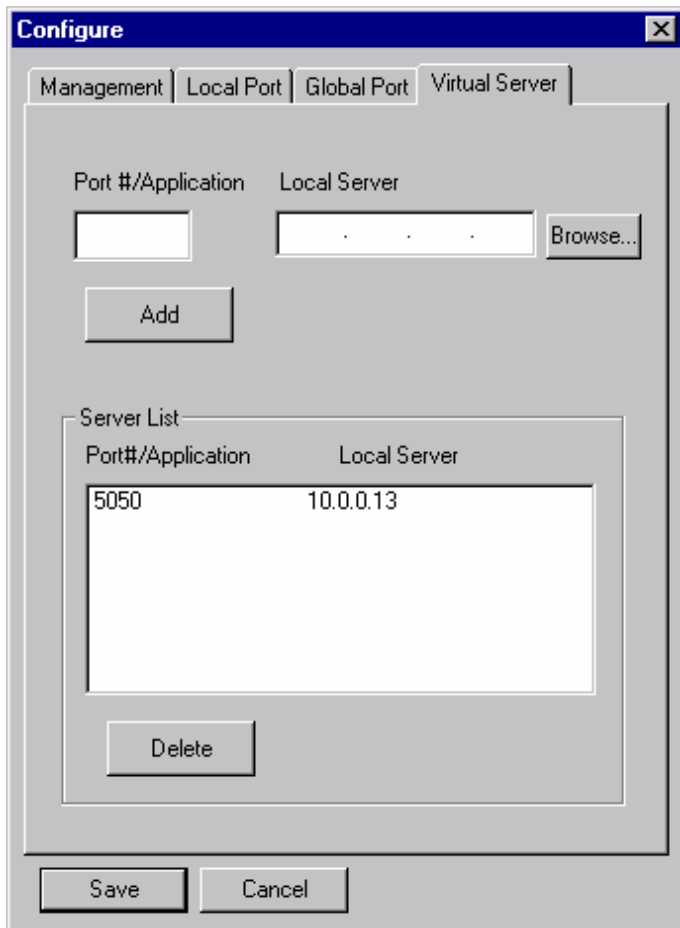
Gateway 203 . 45 . 68 . 1

DNS server #1 61 . 9 . 192 . 13

DNS server #2 61 . 9 . 192 . 16

RELEASE RENEW

Save Cancel



Setting up on BPALogin:

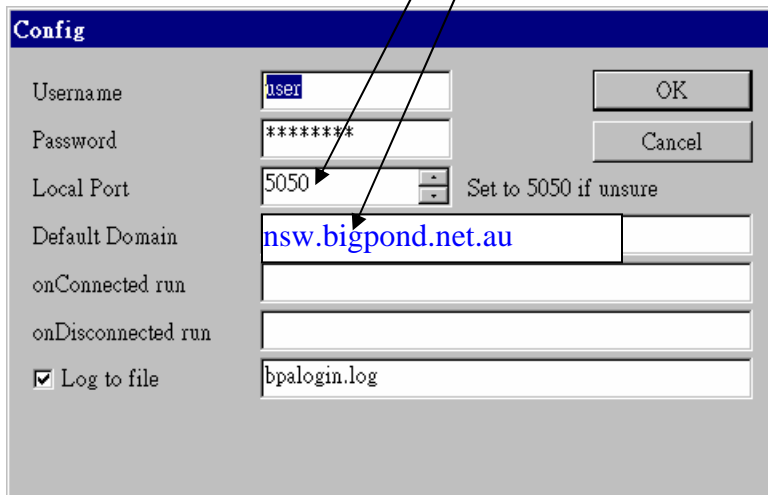
BPALogin is the freeware login client written by Shane Hyde. This is the client program that was modified to work on static port 5050. Please keep in mind that BPALogin is not distributed by or supported by Telstra or BigPond Advance. BPALogin is simply an open-source/freeware version of the authentication client.

You can see his page at <http://bpalogin.sourceforge.net/>

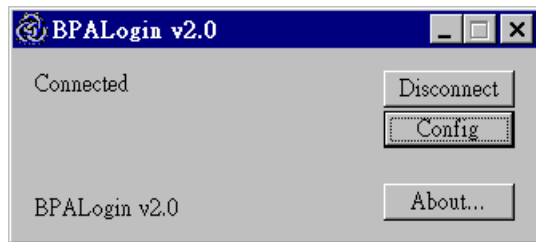
Basically, the settings is below:

- Just make sure the same port is used in DI-701 and BPALogin

IMPORTANT! Please set the Default Domain to your state.bigpond.net.au



The Config dialog box has a blue title bar with the text "Config". It contains several fields and buttons. The "Username" field has "user" entered. The "Password" field has "*****" entered. The "Local Port" field has "5050" entered, with a small arrow pointing to it from the text box above. To the right of the "Local Port" field is the text "Set to 5050 if unsure". The "Default Domain" field has "nsw.bigpond.net.au" entered, with an arrow pointing to it from the text box above. Below the "Default Domain" field are two empty text boxes labeled "onConnected run" and "onDisconnected run". The "Log to file" checkbox is checked, and the "bpallogin.log" file name is entered in the adjacent field. "OK" and "Cancel" buttons are in the top right corner.



The BPALogin v2.0 main window has a blue title bar with the text "BPALogin v2.0". It contains a "Connected" status label, a "Disconnect" button, a "Config" button, and an "About..." button. The version "BPALogin v2.0" is also displayed at the bottom left.

IMPORTANT NOTES TO USERS:

For the best firmware and Config program to use in Australia, please visit:
<http://www.dlink.com.au/tech/drivers/files/internets/di701.htm>

Note that the firmware version is 2.20 or 3.21. The Config program version can be version 2.20 (on the web) or version 2.22 (in the package). Both Config programs are working fine with firmware version 2.20 but we will recommend ver 2.20 as in this example. Config program version 3.20 has to be used with 3.21 firmware.

Other DI-701 related info (eg. setup on Bigpond ADSL service) is on:
<http://www.dlink.com.au/tech/resources/files/internets/di701.htm>

Disclaimer:

The details provided here (at the time of available) are for reference only. We are providing these details "as is" in the hope that they could help customer in some situation. We will not be held responsible for any support and/or consequences that arise from these.