

D-LINK SYSTEMS, INC. | WIRELESS ROUTER : Setup / Internet Connection Setup Wizard - Microsoft Internet Explorer provid...

File Edit View Favorites Tools Help

Address http://192.168.0.1/Basic/Wizard_WAN.shtml Links Go

Product Page: DIR-615 Hardware Version: B2 Firmware Version: 2.21P1

D-Link

SET STATIC IP ADDRESS CONNECTION

To set up this connection you will need to have a complete list of IP information provided by your Internet Service Provider. If you have a Static IP connection and do not have this information, please contact your ISP.

IP Address :

Subnet Mask :

Gateway Address :

Primary DNS Address :

Secondary DNS Address :

Prev Next Cancel Connect

WIRELESS

Done Internet

D-LINK SYSTEMS, INC. | WIRELESS ROUTER : Setup / Internet Connection Setup Wizard - Microsoft Internet Explorer provid...

File Edit View Favorites Tools Help

Address http://192.168.0.1/Basic/Wizard_WAN.shtml Links Go

Product Page: DIR-615 Hardware Version: B2 Firmware Version: 2.21P1

D-Link

SET BIGPOND CABLE CONNECTION

To set up this connection you will need to have a Username and Password from your Internet Service Provider. You also need BigPond Server IP address. If you do not have this information, please contact your ISP.

User Name :

Password :

Verify Password :

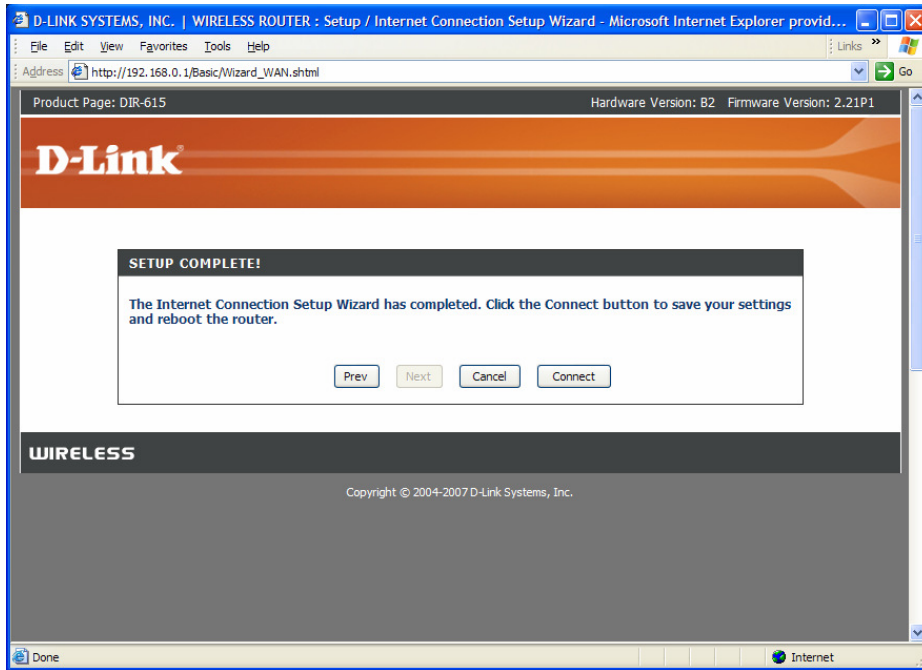
BigPond Server :

Prev Next Cancel Connect

WIRELESS

Copyright © 2004-2007 D-Link Systems, Inc.

Done Internet



D-LINK SYSTEMS, INC. | WIRELESS ROUTER : Setup / WAN - Microsoft Internet Explorer provided by D-Link Australia

Address http://192.168.0.1/Basic/WAN.shtml

Product Page: DIR-615 Hardware Version: B2 Firmware Version: 2.21P1

D-Link

DIR-615	SETUP	ADVANCED	TOOLS	STATUS	SUPPORT
----------------	--------------	-----------------	--------------	---------------	----------------

INTERNET

WIRELESS SETTINGS

NETWORK SETTINGS

WAN

Use this section to configure your Internet Connection type. There are several connection types to choose from: Static IP, DHCP, PPPoE, PPTP, L2TP, and BigPond. If you are unsure of your connection method, please contact your Internet Service Provider.

Note : If using the PPPoE option, you will need to remove or disable any PPPoE client software on your computers.

Save Settings Don't Save Settings

INTERNET CONNECTION TYPE

Choose the mode to be used by the router to connect to the Internet.

My Internet Connection is : Static IP

STATIC IP ADDRESS INTERNET CONNECTION TYPE :

Enter the static address information provided by your Internet Service Provider (ISP).

IP Address : 0.0.0.0

Subnet Mask : 255.255.255.0

Default Gateway : 0.0.0.0

Primary DNS Server : 0.0.0.0

Secondary DNS Server : 0.0.0.0

MTU : 1500 (bytes) MTU default = 1500

MAC Address : 00:00:00:00:00:00

Clone Your PC's MAC Address

Helpful Hints...

When configuring the router to access the Internet, be sure to choose the correct **Internet Connection Type** from the drop down menu. If you are unsure of which option to choose, contact your **Internet Service Provider (ISP)**.

If you are having trouble accessing the Internet through the router, double check any settings you have entered on this page and verify them with your ISP if needed.

More...

WIRELESS

Done Internet

D-LINK SYSTEMS, INC. | WIRELESS ROUTER : Setup / WAN - Microsoft Internet Explorer provided by D-Link Australia

Address http://192.168.0.1/Basic/WAN.shtml

Product Page: DIR-615 Hardware Version: B2 Firmware Version: 2.21P1

D-Link

DIR-615	SETUP	ADVANCED	TOOLS	STATUS	SUPPORT
----------------	--------------	-----------------	--------------	---------------	----------------

INTERNET

WIRELESS SETTINGS

NETWORK SETTINGS

WAN

Use this section to configure your Internet Connection type. There are several connection types to choose from: Static IP, DHCP, PPPoE, PPTP, L2TP, and BigPond. If you are unsure of your connection method, please contact your Internet Service Provider.

Note : If using the PPPoE option, you will need to remove or disable any PPPoE client software on your computers.

Save Settings Don't Save Settings

INTERNET CONNECTION TYPE

Choose the mode to be used by the router to connect to the Internet.

My Internet Connection is : PPPoE (Username / Password)

PPPOE INTERNET CONNECTION TYPE :

Enter the information provided by your Internet Service Provider (ISP).

Address Mode : Dynamic IP Static IP

IP Address : 0.0.0.0

Username :

Password :

Verify Password :

Service Name : (optional)

Reconnect Mode : Always on On demand Manual

Maximum Idle Time : 5 (minutes, 0=infinite)

Primary DNS Server : 0.0.0.0 (optional)

Secondary DNS Server : 0.0.0.0 (optional)

MTU : 1492 (bytes) MTU default = 1492

MAC Address : 00:00:00:00:00:00

Clone Your PC's MAC Address

Helpful Hints...

When configuring the router to access the Internet, be sure to choose the correct **Internet Connection Type** from the drop down menu. If you are unsure of which option to choose, contact your **Internet Service Provider (ISP)**.

If you are having trouble accessing the Internet through the router, double check any settings you have entered on this page and verify them with your ISP if needed.

More...

WIRELESS

Copyright © 2004-2007 D-Link Systems, Inc. Internet

D-LINK SYSTEMS, INC. | WIRELESS ROUTER : Setup / WAN - Microsoft Internet Explorer provided by D-Link Australia

Product Page: DIR-615 Hardware Version: B2 Firmware Version: 2.21P1

D-Link

DIR-615	SETUP	ADVANCED	TOOLS	STATUS	SUPPORT
INTERNET	WAN				Helpful Hints... When configuring the router to access the Internet, be sure to choose the correct Internet Connection Type from the drop down menu. If you are unsure of which option to choose, contact your Internet Service Provider (ISP) . If you are having trouble accessing the Internet through the router, double check any settings you have entered on this page and verify them with your ISP if needed. More...
WIRELESS SETTINGS	<p>Use this section to configure your Internet Connection type. There are several connection types to choose from: Static IP, DHCP, PPPoE, PPTP, L2TP, and BigPond. If you are unsure of your connection method, please contact your Internet Service Provider.</p> <p>Note : If using the PPPoE option, you will need to remove or disable any PPPoE client software on your computers.</p> <p>Save Settings Don't Save Settings</p>				
NETWORK SETTINGS	<p>INTERNET CONNECTION TYPE</p> <p>Choose the mode to be used by the router to connect to the Internet.</p> <p>My Internet Connection is : BigPond (Australia)</p>				
<p>BIG POND INTERNET CONNECTION TYPE :</p> <p>Enter the information provided by your Internet Service Provider (ISP).</p> <p>BigPond Server : <input type="text"/></p> <p>BigPond User Id : <input type="text"/></p> <p>BigPond Password : <input type="text"/></p> <p>Verify Password : <input type="text"/></p> <p>Primary DNS Server : 0.0.0.0</p> <p>Secondary DNS Server : 0.0.0.0</p> <p>MTU : 1500 (bytes) MTU default = 1500</p> <p>MAC Address : 00:00:00:00:00:00</p> <p>Clone Your PC's MAC Address</p>					

WIRELESS

Copyright © 2004-2007 D-Link Systems, Inc.

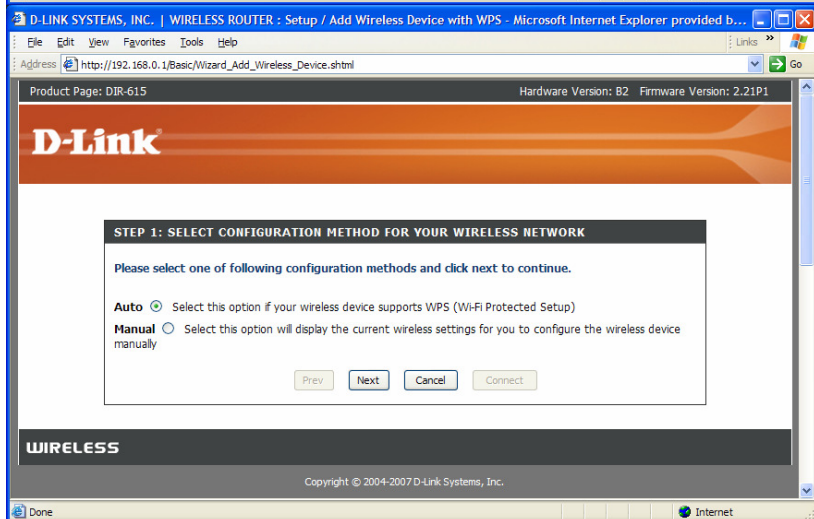
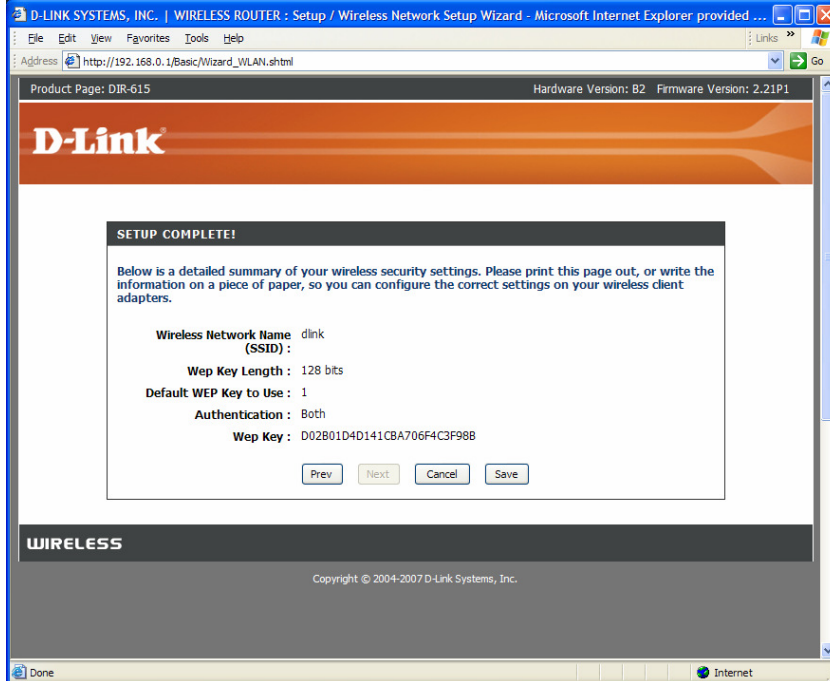
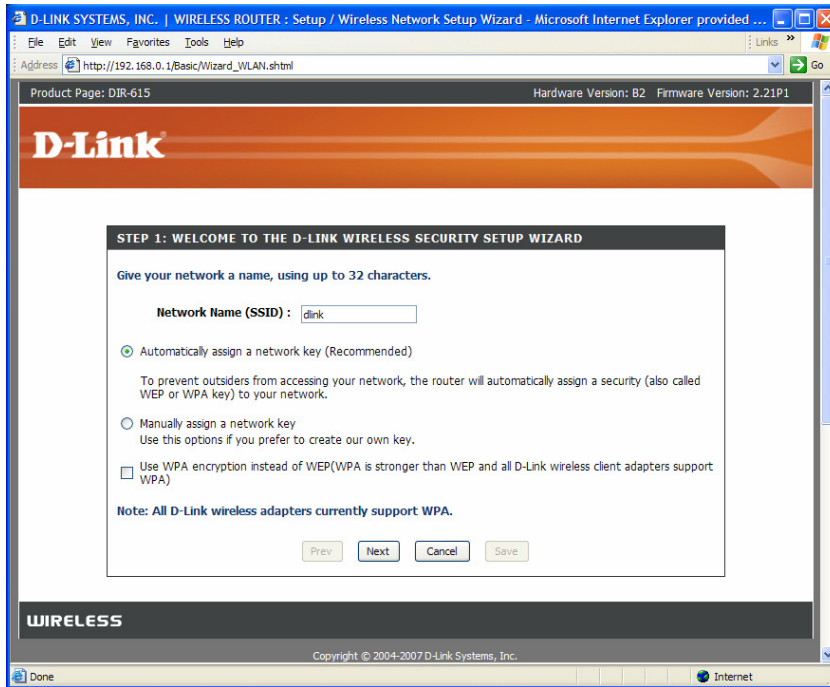
D-LINK SYSTEMS, INC. | WIRELESS ROUTER : Setup / Wireless Wizard - Microsoft Internet Explorer provided by D-Link Austr...

Product Page: DIR-615 Hardware Version: B2 Firmware Version: 2.21P1

D-Link

DIR-615	SETUP	ADVANCED	TOOLS	STATUS	SUPPORT
INTERNET	WIRELESS SETTINGS				Helpful Hints... If you already have a wireless network setup with Wi-Fi Protected Setup, click on Add Wireless Device Wizard to add new device to your wireless network. If you are new to wireless networking and have never configured a wireless router before, click on Wireless Network Setup Wizard and the router will guide you through a few simple steps to get your wireless network up and running. If you consider yourself an advanced user and have configured a wireless router before, click Manual Wireless Network Setup to input all the settings manually. More...
WIRELESS SETTINGS	<p>The following Web-based wizards are designed to assist you in your wireless network setup and wireless device connection.</p> <p>Before launching these wizards, please make sure you have followed all steps outlined in the Quick Installation Guide included in the package.</p>				
NETWORK SETTINGS	<p>WIRELESS NETWORK SETUP WIZARD</p> <p>This wizard is designed to assist you in your wireless network setup. It will guide you through step-by-step instructions on how to set up your wireless network and how to make it secure.</p> <p>Wireless Network Setup Wizard</p> <p>Note: Some changes made using this Setup Wizard may require you to change some settings on your wireless client adapters so they can still connect to the D-Link Router.</p>				
<p>ADD WIRELESS DEVICE WITH WPS (WI-FI PROTECTED SETUP) WIZARD</p> <p>This wizard is designed to assist you in connecting your wireless device to your router. It will guide you through step-by-step instructions on how to get your wireless device connected. Click the button below to begin.</p> <p>Add Wireless Device with WPS</p>					
<p>MANUAL WIRELESS NETWORK SETUP</p> <p>If your wireless network is already set up with Wi-Fi Protected Setup, manual configuration of the wireless network will destroy the existing wireless network. If you would like to configure the wireless settings of your new D-Link Systems Router manually, then click on the Manual Wireless Network Setup button below.</p> <p>Manual Wireless Network Setup</p>					

Done



D-LINK SYSTEMS, INC. | WIRELESS ROUTER : Setup / Add Wireless Device with WPS - Microsoft Internet Explorer provided b...

Address http://192.168.0.1/Basic/Wizard_Add_Wireless_Device.shtml

Product Page: DIR-615 Hardware Version: B2 Firmware Version: 2.21P1

D-Link

STEP 2: CONNECT YOUR WIRELESS DEVICE

There are two ways to add wireless device to your wireless network:

- PIN (Personal Identification Number)
- PBC (Push Button Configuration)

PIN:

please enter the PIN from your wireless device and click the below 'Connect' Button

PBC

please press the push button on your wireless device and click the below 'Connect' Button within 120 seconds

WIRELESS

D-LINK SYSTEMS, INC. | WIRELESS ROUTER : Setup / Add Wireless Device with WPS - Microsoft Internet Explorer provided b...

Address http://192.168.0.1/Basic/Wizard_Add_Wireless_Device.shtml

Product Page: DIR-615 Hardware Version: B2 Firmware Version: 2.21P1

D-Link

STEP 2: CONNECT YOUR WIRELESS DEVICE

Below is a detailed summary of your wireless security settings. Please print this page out, or write the information on a piece of paper, so you can configure the correct settings on your wireless client adapters.

SSID: dlink
Security Mode: None

WIRELESS

Copyright © 2004-2007 D-Link Systems, Inc.

D-LINK SYSTEMS, INC. | WIRELESS ROUTER : Setup / Wireless Settings - Microsoft Internet Explorer provided by D-Link Aust...

Address http://192.168.0.1/Basic/Wireless.shtml

Product Page: DIR-615 Hardware Version: B2 Firmware Version: 2.21P1

D-Link

DIR-615	SETUP	ADVANCED	TOOLS	STATUS	SUPPORT
INTERNET WIRELESS SETTINGS NETWORK SETTINGS	<div style="border: 1px solid orange; padding: 5px; margin-bottom: 10px;"> <p>WIRELESS</p> <p>Use this section to configure the wireless settings for your D-Link Router. Please note that changes made on this section may also need to be duplicated on your Wireless Client.</p> <p style="text-align: center;"> <input type="button" value="Save Settings"/> <input type="button" value="Don't Save Settings"/> </p> </div> <div style="border: 1px solid black; padding: 5px; margin-bottom: 10px;"> <p>WIRELESS NETWORK SETTINGS</p> <p>Enable Wireless : <input checked="" type="checkbox"/> Always <input type="button" value="Add New"/></p> <p>Wireless Network Name : <input type="text" value="dlink"/> (Also called the SSID)</p> <p>802.11 Mode : <input type="text" value="Mixed 802.11n, 802.11g and 802.11b"/></p> <p>Enable Auto Channel Scan : <input checked="" type="checkbox"/></p> <p>Wireless Channel : <input type="text" value="2.437 GHz - CH 6"/></p> <p>Transmission Rate : <input type="text" value="Best (automatic)"/> (Mbit/s)</p> <p>Channel Width : <input type="text" value="20 MHz"/></p> <p>Visibility Status : <input checked="" type="radio"/> Visible <input type="radio"/> Invisible</p> </div> <div style="border: 1px solid black; padding: 5px;"> <p>WIRELESS SECURITY MODE</p> <p>To protect your privacy you can configure wireless security features. This device supports three wireless security modes, including WEP, WPA-Personal, and WPA-Enterprise. WEP is the original wireless encryption standard. WPA provides a higher level of security. WPA-Personal does not require an authentication server. The WPA-Enterprise option requires an external RADIUS server.</p> <p>Security Mode : <input type="text" value="None"/></p> </div>				<p>Helpful Hints...</p> <p>Changing your Wireless Network Name is the first step in securing your wireless network. Change it to a familiar name that does not contain any personal information.</p> <p>Enable Auto Channel Scan so that the router can select the best possible channel for your wireless network to operate on.</p> <p>Enabling Hidden Mode is another way to secure your network. With this option enabled, no wireless clients will be able to see your wireless network when they scan to see what's available. For your wireless devices to connect to your router, you will need to manually enter the Wireless Network Name on each device.</p> <p>If you have enabled Wireless Security, make sure you write down the Key or Passphrase that you have</p>

WIRELESS

D-LINK SYSTEMS, INC. | WIRELESS ROUTER : Setup / Wireless Settings - Microsoft Internet Explorer provided by D-Link Aust...

Address: http://192.168.0.1/Basic/Wireless.shtml

Product Page: DIR-615 Hardware Version: B2 Firmware Version: 2.21P1

D-Link

DIR-615 // SETUP ADVANCED TOOLS STATUS SUPPORT

INTERNET WIRELESS SETTINGS NETWORK SETTINGS

WIRELESS

Use this section to configure the wireless settings for your D-Link Router. Please note that changes made on this section may also need to be duplicated on your Wireless Client.

Save Settings Don't Save Settings

WIRELESS NETWORK SETTINGS

Enable Wireless : Always Add New

Wireless Network Name : dlink (Also called the SSID)

802.11 Mode : Mixed 802.11n, 802.11g and 802.11b

Enable Auto Channel Scan : 802.11b only 802.11g only 802.11n only Mixed 802.11g and 802.11b Mixed 802.11n and 802.11g

Wireless Channel : Mixed 802.11n, 802.11g and 802.11b

Transmission Rate : Mixed 802.11n, 802.11g and 802.11b

Channel Width : 20 MHz

Visibility Status : Visible Invisible

WIRELESS SECURITY MODE

To protect your privacy you can configure wireless security features. This device supports three wireless security modes, including WEP, WPA-Personal, and WPA-Enterprise. WEP is the original wireless encryption standard. WPA provides a higher level of security. WPA-Personal does not require an authentication server. The WPA-Enterprise option requires an external RADIUS server.

Security Mode : None

Helpful Hints...

Changing your Wireless Network Name is the first step in securing your wireless network. Change it to a familiar name that does not contain any personal information.

Enable Auto Channel Scan so that the router can select the best possible channel for your wireless network to operate on.

Enabling Hidden Mode is another way to secure your network. With this option enabled, no wireless clients will be able to see your wireless network when they scan to see what's available. For your wireless devices to connect to your router, you will need to manually enter the Wireless Network Name on each device.

If you have enabled Wireless Security, make sure you write down the Key or Passphrase that you have

Done Internet

D-LINK SYSTEMS, INC. | WIRELESS ROUTER : Setup / Wireless Settings - Microsoft Internet Explorer provided by D-Link Aust...

Address: http://192.168.0.1/Basic/Wireless.shtml

WIRELESS SETTINGS NETWORK SETTINGS

Use this section to configure the wireless settings for your D-Link Router. Please note that changes made on this section may also need to be duplicated on your Wireless Client.

Save Settings Don't Save Settings

WIRELESS NETWORK SETTINGS

Enable Wireless : Always Add New

Wireless Network Name : dlink (Also called the SSID)

802.11 Mode : Mixed 802.11n, 802.11g and 802.11b

Enable Auto Channel Scan :

Wireless Channel : 2.437 GHz - CH 6

Transmission Rate : Best (automatic) (Mbit/s)

Channel Width : MCS 15 - 130 [270] MCS 14 - 117 [243] MCS 13 - 104 [216] MCS 12 - 78 [162] MCS 11 - 52 [108] MCS 10 - 39 [81] MCS 9 - 26 [54] MCS 8 - 13 [27] MCS 7 - 65 [135] MCS 6 - 58.5 [121.5] MCS 5 - 52 [108] MCS 4 - 39 [81] MCS 3 - 26 [54] MCS 2 - 19.5 [40.5] MCS 1 - 13 [27] MCS 0 - 6.5 [13.5]

Visibility Status : e

WIRELESS SECURITY MODE

To protect your privacy you can configure wireless security features. This device supports three wireless security modes, including WEP, WPA-Personal, and WPA-Enterprise. WEP is the original wireless encryption standard. WPA provides a higher level of security. WPA-Personal does not require an authentication server. The WPA-Enterprise option requires an external RADIUS server.

Security Mode : 54 48 36 24 18 12 9 6 11 5.5 2 1

Helpful Hints...

Changing your Wireless Network Name is the first step in securing your wireless network. Change it to a familiar name that does not contain any personal information.

Enable Auto Channel Scan so that the router can select the best possible channel for your wireless network to operate on.

Enabling Hidden Mode is another way to secure your network. With this option enabled, no wireless clients will be able to see your wireless network when they scan to see what's available. For your wireless devices to connect to your router, you will need to manually enter the Wireless Network Name on each device.

If you have enabled Wireless Security, make sure you write down the Key or Passphrase that you have configured. You will need to enter this information on any wireless device that you connect to your wireless network.

More...

WIRELESS

Done Internet

D-LINK SYSTEMS, INC. | WIRELESS ROUTER : Setup / Wireless Settings - Microsoft Internet Explorer provided by D-Link Aust...

File Edit View Favorites Tools Help

Address http://192.168.0.1/Basic/Wireless.shtml

WIRELESS SETTINGS

Use this section to configure the wireless settings for your D-Link Router. Please note that changes made on this section may also need to be duplicated on your Wireless Client.

Save Settings Don't Save Settings

WIRELESS NETWORK SETTINGS

Enable Wireless : Always Add New

Wireless Network Name : dlink (Also called the SSID)

802.11 Mode : Mixed 802.11n, 802.11g and 802.11b

Enable Auto Channel Scan :

Wireless Channel : 2.437 GHz - CH 6

Transmission Rate : Best (automatic) (Mbit/s)

Channel Width : 20 Mhz

Visibility Status : Visible Invisible

WIRELESS SECURITY MODE

To protect your privacy you can configure wireless security features. This device supports three wireless security modes, including WEP, WPA-Personal, and WPA-Enterprise. WEP is the original wireless encryption standard. WPA provides a higher level of security. WPA-Personal does not require an authentication server. The WPA-Enterprise option requires an external RADIUS server.

Security Mode : None

None
WEP
WPA-Personal
WPA-Enterprise

Changing your Wireless Network Name is the first step in securing your wireless network. Change it to a familiar name that does not contain any personal information.

Enable Auto Channel Scan so that the router can select the best possible channel for your wireless network to operate on.

Enabling Hidden Mode is another way to secure your network. With this option enabled, no wireless clients will be able to see your wireless network when they scan to see what's available. For your wireless devices to connect to your router, you will need to manually enter the Wireless Network Name on each device.

If you have enabled Wireless Security, make sure you write down the Key or Passphrase that you have configured. You will need to enter this information on any wireless device that you connect to your wireless network.

More...

WIRELESS

Done Internet

D-LINK SYSTEMS, INC. | WIRELESS ROUTER : Setup / Wireless Settings - Microsoft Internet Explorer provided by D-Link Aust...

File Edit View Favorites Tools Help

Address http://192.168.0.1/Basic/Wireless.shtml

Visibility Status : Visible Invisible

WIRELESS SECURITY MODE

To protect your privacy you can configure wireless security features. This device supports three wireless security modes, including WEP, WPA-Personal, and WPA-Enterprise. WEP is the original wireless encryption standard. WPA provides a higher level of security. WPA-Personal does not require an authentication server. The WPA-Enterprise option requires an external RADIUS server.

Security Mode : WEP

WEP

WEP is the wireless encryption standard. To use it you must enter the same key(s) into the router and the wireless stations. For 64 bit keys you must enter 10 hex digits into each key box. For 128 bit keys you must enter 26 hex digits into each key box. A hex digit is either a number from 0 to 9 or a letter from A to F. For the most secure use of WEP set the authentication type to "Shared Key" when WEP is enabled.

You may also enter any text string into a WEP key box, in which case it will be converted into a hexadecimal key using the ASCII values of the characters. A maximum of 5 text characters can be entered for 64 bit keys, and a maximum of 13 characters for 128 bit keys.

If you choose the WEP security option this device will **ONLY** operate in **Legacy Wireless mode (802.11B/G)**. This means you will **NOT** get 11N performance due to the fact that WEP is not supported by Draft 11N specification.

WEP Key Length : 64 bit (10 hex digits) (length applies to all keys)

WEP Key 1 :

WEP Key 2 :

WEP Key 3 :

WEP Key 4 :

Default WEP Key : WEP Key 1

Authentication : Both

enabled, no wireless clients will be able to see your wireless network when they scan to see what's available. For your wireless devices to connect to your router, you will need to manually enter the Wireless Network Name on each device.

If you have enabled Wireless Security, make sure you write down the Key or Passphrase that you have configured. You will need to enter this information on any wireless device that you connect to your wireless network.

More...

WIRELESS

Copyright © 2004-2007 D-Link Systems, Inc.

Done Internet

D-LINK SYSTEMS, INC. | WIRELESS ROUTER : Setup / Wireless Settings - Microsoft Internet Explorer provided by D-Link Aust...

File Edit View Favorites Tools Help

Address http://192.168.0.1/Basic/Wireless.shtml

Channel Width : 20 MHz
Visibility Status : Visible Invisible

WIRELESS SECURITY MODE

To protect your privacy you can configure wireless security features. This device supports three wireless security modes, including WEP, WPA-Personal, and WPA-Enterprise. WEP is the original wireless encryption standard. WPA provides a higher level of security. WPA-Personal does not require an authentication server. The WPA-Enterprise option requires an external RADIUS server.

Security Mode : WPA-Personal

WPA

Use **WPA** or **WPA2** mode to achieve a balance of strong security and best compatibility. This mode uses WPA for legacy clients while maintaining higher security with stations that are WPA2 capable. Also the strongest cipher that the client supports will be used. For best security, use **WPA2 Only** mode. This mode uses AES(CCMP) cipher and legacy stations are not allowed access with WPA security. For maximum compatibility, use **WPA Only**. This mode uses TKIP cipher. Some gaming and legacy devices work only in this mode.

To achieve better wireless performance use **WPA2 Only** security mode (or in other words AES cipher).

WPA Mode : Auto (WPA or WPA2)
Cipher Type : TKIP and AES
Group Key Update Interval : 3600 (seconds)

PRE-SHARED KEY

Enter an 8- to 63-character alphanumeric pass-phrase. For good security it should be of ample length and should not be a commonly known phrase.

Pre-Shared Key :

WIRELESS

Copyright © 2004-2007 D-Link Systems, Inc.

Done Internet

With this option enabled, no wireless clients will be able to see your wireless network when they scan to see what's available. For your wireless devices to connect to your router, you will need to manually enter the Wireless Network Name on each device.

If you have enabled Wireless Security, make sure you write down the Key or Passphrase that you have configured. You will need to enter this information on any wireless device that you connect to your wireless network.

More...

D-LINK SYSTEMS, INC. | WIRELESS ROUTER : Setup / Wireless Settings - Microsoft Internet Explorer provided by D-Link Aust...

File Edit View Favorites Tools Help

Address http://192.168.0.1/Basic/Wireless.shtml

Wireless security modes, including WEP, WPA-Personal, and WPA-Enterprise. WEP is the original wireless encryption standard. WPA provides a higher level of security. WPA-Personal does not require an authentication server. The WPA-Enterprise option requires an external RADIUS server.

Security Mode : WPA-Enterprise

WPA

Use **WPA** or **WPA2** mode to achieve a balance of strong security and best compatibility. This mode uses WPA for legacy clients while maintaining higher security with stations that are WPA2 capable. Also the strongest cipher that the client supports will be used. For best security, use **WPA2 Only** mode. This mode uses AES(CCMP) cipher and legacy stations are not allowed access with WPA security. For maximum compatibility, use **WPA Only**. This mode uses TKIP cipher. Some gaming and legacy devices work only in this mode.

To achieve better wireless performance use **WPA2 Only** security mode (or in other words AES cipher).

WPA Mode : Auto (WPA or WPA2)
Cipher Type : TKIP and AES
Group Key Update Interval : 3600 (seconds)

EAP (802.1X)

When WPA enterprise is enabled, the router uses EAP (802.1x) to authenticate clients via a remote RADIUS server.

Authentication Timeout : 60 (minutes)
RADIUS server IP Address : 0.0.0.0
RADIUS server Port : 1812
RADIUS server Shared Secret :
MAC Address Authentication :

Advanced >>

WIRELESS

Copyright © 2004-2007 D-Link Systems, Inc.

Done Internet

you will need to manually enter the Wireless Network Name on each device.

If you have enabled Wireless Security, make sure you write down the Key or Passphrase that you have configured. You will need to enter this information on any wireless device that you connect to your wireless network.

More...

D-LINK SYSTEMS, INC. | WIRELESS ROUTER : Setup / Network Settings - Microsoft Internet Explorer provided by D-Link Aust...

Address: http://192.168.0.1/Basic/Network.shtml

Product Page: DIR-615 Hardware Version: B2 Firmware Version: 2.21P1

D-Link

DIR-615 // SETUP ADVANCED TOOLS STATUS SUPPORT

INTERNET WIRELESS SETTINGS NETWORK SETTINGS

NETWORK SETTINGS

Use this section to configure the internal network settings of your router and also to configure the built-in DHCP Server to assign IP addresses to the computers on your network. The IP Address that is configured here is the IP Address that you use to access the Web-based management interface. If you change the IP Address here, you may need to adjust your PC's network settings to access the network again.

Save Settings Don't Save Settings

ROUTER SETTINGS

Use this section to configure the internal network settings of your router. The IP Address that is configured here is the IP Address that you use to access the Web-based management interface. If you change the IP Address here, you may need to adjust your PC's network settings to access the network again.

Router IP Address: 192.168.0.1
 Subnet Mask: 255.255.255.0
 Local Domain Name: (optional)
 Enable DNS Relay:

DHCP SERVER SETTINGS

Use this section to configure the built-in DHCP Server to assign IP addresses to the computers on your network.

Enable DHCP Server:
 DHCP IP Address Range: 192.168.0.100 to 192.168.0.199
 DHCP Lease Time: 1440 (minutes)
 Always broadcast: (compatibility for some DHCP Clients)
 NetBIOS announcement:
 Learn NetBIOS from WAN:
 NetBIOS Scope: (optional)
 NetBIOS node type :
 Broadcast only (use when no WINS servers configured)
 Point-to-Point (no broadcast)
 Mixed-mode (Broadcast then Point-to-Point)
 Hybrid (Point-to-Point then Broadcast)

Learn NetBIOS from WAN:
 NetBIOS Scope: (optional)
 NetBIOS node type :
 Broadcast only (use when no WINS servers configured)
 Point-to-Point (no broadcast)
 Mixed-mode (Broadcast then Point-to-Point)
 Hybrid (Point-to-Point then Broadcast)

Primary WINS IP Address: 0.0.0.0
 Secondary WINS IP Address: 0.0.0.0

ADD DHCP RESERVATION

Enable:
 Computer Name: << Computer Name
 IP Address:
 MAC Address:
 Copy Your PC's MAC Address
 Save Clear

DHCP RESERVATIONS LIST

Enable	Computer Name	MAC Address	IP Address

NUMBER OF DYNAMIC DHCP CLIENTS: 0

Hardware Address	Assigned IP	Hostname	Expires

WIRELESS

Copyright © 2004-2007 D-Link Systems, Inc.

D-LINK SYSTEMS, INC. | WIRELESS ROUTER : Advanced / Virtual Server - Microsoft Internet Explorer provided by D-Link Aus...

File Edit View Favorites Tools Help

Address http://192.168.0.1/Advanced/virtual_Server.shtml

Product Page: DIR-615 Hardware Version: B2 Firmware Version: 2.21P1

D-Link

DIR-615 // SETUP ADVANCED TOOLS STATUS SUPPORT

VIRTUAL SERVER

PORT FORWARDING APPLICATION RULES NETWORK FILTER ACCESS CONTROL WEBSITE FILTER INBOUND FILTER FIREWALL SETTINGS ADVANCED WIRELESS WI-FI PROTECTED SETUP ADVANCED NETWORK

VIRTUAL SERVER

The Virtual Server option allows you to define a single public port on your router for redirection to an internal LAN IP Address and Private LAN port if required. This feature is useful for hosting online services such as FTP or Web Servers.

Save Settings Don't Save Settings

24--VIRTUAL SERVERS LIST

	Name	Application Name	Port	Traffic Type	Schedule	Inbound Filter
<input type="checkbox"/>		<< Application Name	Public 0	Protocol TCP	Schedule Always	
	IP Address 0.0.0.0	<< Computer Name	Private 0	6		Allow All
<input type="checkbox"/>		<< Application Name	Public 0	Protocol TCP	Schedule Always	
	IP Address 0.0.0.0	<< Computer Name	Private 0	6		Allow All
<input type="checkbox"/>		<< Application Name	Public 0	Protocol TCP	Schedule Always	
	IP Address 0.0.0.0	<< Computer Name	Private 0	6		Allow All
<input type="checkbox"/>		<< Application Name	Public 0	Protocol TCP	Schedule Always	
	IP Address 0.0.0.0	<< Computer Name	Private 0	6		Allow All
<input type="checkbox"/>		<< Application Name	Public 0	Protocol TCP	Schedule Always	
	IP Address 0.0.0.0	<< Computer Name	Private 0	6		Allow All
<input type="checkbox"/>		<< Application Name	Public 0	Protocol TCP	Schedule Always	
	IP Address 0.0.0.0	<< Computer Name	Private 0	6		Allow All
<input type="checkbox"/>		<< Application Name	Public 0	Protocol TCP	Schedule Always	
	IP Address 0.0.0.0	<< Computer Name	Private 0	6		Allow All
<input type="checkbox"/>		<< Application Name	Public 0	Protocol TCP	Schedule Always	
	IP Address 0.0.0.0	<< Computer Name	Private 0	6		Allow All

Helpful Hints...

Check the **Application Name** drop down menu for a list of predefined server types. If you select one of the predefined server types, click the arrow button next to the drop down menu to fill out the corresponding field.

You can select a computer from the list of DHCP clients in the **Computer Name** drop down menu, or you can manually enter the IP address of the computer at which you would like to open the specified port.

Select a schedule for when the virtual server will be enabled. If you do not see the schedule you need in the list of schedules, go to the **Tools** → **Schedules** screen and create a new schedule.

Select a filter that restricts the Internet hosts that can access this virtual server to hosts that you trust. If you do not see the filter you need in the list of filters, go to the **Advanced** → **Inbound Filter** screen and create a new filter.

More...

Internet

D-LINK SYSTEMS, INC. | WIRELESS ROUTER : Advanced / Port Forwarding - Microsoft Internet Explorer provided by D-Link A...

File Edit View Favorites Tools Help

Address http://192.168.0.1/Advanced/Gaming.shtml

Product Page: DIR-615 Hardware Version: B2 Firmware Version: 2.21P1

D-Link

DIR-615 // SETUP ADVANCED TOOLS STATUS SUPPORT

VIRTUAL SERVER

PORT FORWARDING

APPLICATION RULES

NETWORK FILTER

ACCESS CONTROL

WEBSITE FILTER

INBOUND FILTER

FIREWALL SETTINGS

ADVANCED WIRELESS

WI-FI PROTECTED SETUP

ADVANCED NETWORK

PORT FORWARDING

This option is used to open multiple ports or a range of ports in your router and redirect data through those ports to a single PC on your network. This feature allows you to enter ports in various formats including, Port Ranges (100-150), Individual Ports (80, 68, 888), or Mixed (1020-5000, 689).

Save Settings Don't Save Settings

24 -- PORT FORWARDING RULES

		Ports to Open		
<input type="checkbox"/>	Name	<< Application Name	TCP	Schedule Always
	IP Address	<< Computer Name	UDP	Inbound Filter Allow All
<input type="checkbox"/>	Name	<< Application Name	TCP	Schedule Always
	IP Address	<< Computer Name	UDP	Inbound Filter Allow All
<input type="checkbox"/>	Name	<< Application Name	TCP	Schedule Always
	IP Address	<< Computer Name	UDP	Inbound Filter Allow All
<input type="checkbox"/>	Name	<< Application Name	TCP	Schedule Always
	IP Address	<< Computer Name	UDP	Inbound Filter Allow All
<input type="checkbox"/>	Name	<< Application Name	TCP	Schedule Always
	IP Address	<< Computer Name	UDP	Inbound Filter Allow All
<input type="checkbox"/>	Name	<< Application Name	TCP	Schedule Always
	IP Address	<< Computer Name	UDP	Inbound Filter Allow All
<input type="checkbox"/>	Name	<< Application Name	TCP	Schedule Always
	IP Address	<< Computer Name	UDP	Inbound Filter Allow All

Helpful Hints...

Check the **Application Name** drop down menu for a list of predefined applications. If you select one of the predefined applications, click the arrow button next to the drop down menu to fill out the corresponding field.

You can select a computer from the list of DHCP clients in the **Computer Name** drop down menu, or you can manually enter the IP address of the LAN computer to which you would like to open the specified port.

Select a schedule for when the rule will be enabled. If you do not see the schedule you need in the list of schedules, go to the **Tools -> Schedules** screen and create a new schedule.

You can enter ports in various formats:

Range (50-100)
 Individual (80, 68, 888)
 Mixed (1020-5000, 689)

More...

Internet

D-LINK SYSTEMS, INC. | WIRELESS ROUTER : Advanced / Application Rules - Microsoft Internet Explorer provided by D-Link ...

Address http://192.168.0.1/Advanced/Special_Applications.shtml

Product Page: DIR-615 Hardware Version: B2 Firmware Version: 2.21P1

D-Link

DIR-615 // SETUP ADVANCED TOOLS STATUS SUPPORT

VIRTUAL SERVER
 PORT FORWARDING
APPLICATION RULES
 NETWORK FILTER
 ACCESS CONTROL
 WEBSITE FILTER
 INBOUND FILTER
 FIREWALL SETTINGS
 ADVANCED WIRELESS
 WI-FI PROTECTED SETUP
 ADVANCED NETWORK

APPLICATION RULES

This option is used to open single or multiple ports on your router when the router senses data sent to the Internet on a "trigger" port or port range. Special Applications rules apply to all computers on your internal network.

Save Settings Don't Save Settings

Helpful Hints...

Use this feature if you are trying to execute one of the listed network applications and it is not communicating as expected.

24 -- APPLICATION RULES

	Name	Application	Port	Traffic Type	Schedule
<input type="checkbox"/>	<input type="text"/>	Application << Application Name	Trigger Firewall	TCP	Always
<input type="checkbox"/>	<input type="text"/>	Application << Application Name	Trigger Firewall	TCP	Always
<input type="checkbox"/>	<input type="text"/>	Application << Application Name	Trigger Firewall	TCP	Always
<input type="checkbox"/>	<input type="text"/>	Application << Application Name	Trigger Firewall	TCP	Always
<input type="checkbox"/>	<input type="text"/>	Application << Application Name	Trigger Firewall	TCP	Always
<input type="checkbox"/>	<input type="text"/>	Application << Application Name	Trigger Firewall	TCP	Always
<input type="checkbox"/>	<input type="text"/>	Application << Application Name	Trigger Firewall	TCP	Always
<input type="checkbox"/>	<input type="text"/>	Application << Application Name	Trigger Firewall	TCP	Always

Check the Application Name drop down menu for a list of predefined applications. If you select one of the predefined applications, click the arrow button next to the drop down menu to fill out the corresponding field.

Select a schedule for when the service will be enabled. If you do not see the schedule you need in the list of schedules, go to the **Tools -> Schedules** screen and create a new schedule.

More...

Done Internet

D-LINK SYSTEMS, INC. | WIRELESS ROUTER : Advanced / Access Control - Microsoft Internet Explorer provided by D-Link Au...
Address http://192.168.0.1/Advanced/Access_Control.shtml

Product Page: DIR-615 Hardware Version: B2 Firmware Version: 2.21P1

D-Link

DIR-615	SETUP	ADVANCED	TOOLS	STATUS	SUPPORT
----------------	-------	-----------------	-------	--------	---------

- VIRTUAL SERVER
- PORT FORWARDING
- APPLICATION RULES
- NETWORK FILTER
- ACCESS CONTROL**
- WEBSITE FILTER
- INBOUND FILTER
- FIREWALL SETTINGS
- ADVANCED WIRELESS
- WI-FI PROTECTED SETUP
- ADVANCED NETWORK

ADD NEW POLICY

This wizard will guide you through the following steps to add a new policy for Access Control.

- Step 1 - Choose a unique name for your policy
- Step 2 - Select a schedule
- Step 3 - Select the machine to which this policy applies
- Step 4 - Select filtering method
- Step 5 - Select filters
- Step 6 - Configure Web Access Logging

Prev Next Save Cancel

WIRELESS

Copyright © 2004-2007 D-Link Systems, Inc.

D-LINK SYSTEMS, INC. | WIRELESS ROUTER : Advanced / Access Control - Microsoft Internet Explorer provided by D-Link Au...
Address http://192.168.0.1/Advanced/Access_Control.shtml

Product Page: DIR-615 Hardware Version: B2 Firmware Version: 2.21P1

D-Link

DIR-615	SETUP	ADVANCED	TOOLS	STATUS	SUPPORT
----------------	-------	-----------------	-------	--------	---------

- VIRTUAL SERVER
- PORT FORWARDING
- APPLICATION RULES
- NETWORK FILTER
- ACCESS CONTROL**
- WEBSITE FILTER
- INBOUND FILTER
- FIREWALL SETTINGS
- ADVANCED WIRELESS
- WI-FI PROTECTED SETUP
- ADVANCED NETWORK

STEP 1: CHOOSE POLICY NAME

Choose a unique name for your policy.

Policy Name :

Prev Next Save Cancel

WIRELESS

Copyright © 2004-2007 D-Link Systems, Inc.

D-LINK SYSTEMS, INC. | WIRELESS ROUTER : Advanced / Access Control - Microsoft Internet Explorer provided by D-Link Au...

Address http://192.168.0.1/Advanced/Access_Control.shtml

Product Page: DIR-615 Hardware Version: B2 Firmware Version: 2.21P1

D-Link

DIR-615 // SETUP ADVANCED TOOLS STATUS SUPPORT

VIRTUAL SERVER
PORT FORWARDING
APPLICATION RULES
NETWORK FILTER
ACCESS CONTROL
WEBSITE FILTER
INBOUND FILTER
FIREWALL SETTINGS
ADVANCED WIRELESS
WI-FI PROTECTED SETUP
ADVANCED NETWORK

STEP 2: SELECT SCHEDULE

Choose a schedule to apply to this policy.

Details :

WIRELESS

Copyright © 2004-2007 D-Link Systems, Inc.

D-LINK SYSTEMS, INC. | WIRELESS ROUTER : Advanced / Access Control - Microsoft Internet Explorer provided by D-Link Au...

Address http://192.168.0.1/Advanced/Access_Control.shtml

Product Page: DIR-615 Hardware Version: B2 Firmware Version: 2.21P1

D-Link

DIR-615 // SETUP ADVANCED TOOLS STATUS SUPPORT

VIRTUAL SERVER
PORT FORWARDING
APPLICATION RULES
NETWORK FILTER
ACCESS CONTROL
WEBSITE FILTER
INBOUND FILTER
FIREWALL SETTINGS
ADVANCED WIRELESS
WI-FI PROTECTED SETUP
ADVANCED NETWORK

STEP 3: SELECT MACHINE

Select the machine to which this policy applies.

Specify a machine with its IP or MAC address, or select "Other Machines" for machines that do not have a policy.

Address Type : IP MAC Other Machines

IP Address : <<

Machine Address : <<

Machine

WIRELESS

Copyright © 2004-2007 D-Link Systems, Inc.

D-LINK SYSTEMS, INC. | WIRELESS ROUTER : Advanced / Web Filter - Microsoft Internet Explorer provided by D-Link Australia

Address: http://192.168.0.1/Advanced/Web_Filter.shtml

Product Page: DIR-615 Hardware Version: B2 Firmware Version: 2.21P1

D-Link

DIR-615 // SETUP ADVANCED TOOLS STATUS SUPPORT

VIRTUAL SERVER
PORT FORWARDING
APPLICATION RULES
NETWORK FILTER
ACCESS CONTROL
WEBSITE FILTER
INBOUND FILTER
FIREWALL SETTINGS
ADVANCED WIRELESS
WI-FI PROTECTED SETUP
ADVANCED NETWORK

WEBSITE FILTER

The Website Filter option allows you to set up a list of Web sites you would like to allow or deny through your network. To use this feature, you must also select the "Apply Web Filter" checkbox in the Access Control section.

Save Settings Don't Save Settings

40 -- WEBSITE FILTERING RULES

Configure Website Filter below:

DENY computers access to ONLY these sites
 DENY computers access to ONLY these sites
 ALLOW computers access to ONLY these sites
 Clear the list below...

Website URL / Domain	

Helpful Hints...
 Create a list of Web Sites to which you would like to deny or allow through the network.
 Use with Advanced -> Access Control.
 More...

D-LINK SYSTEMS, INC. | WIRELESS ROUTER : Advanced / Inbound Filter - Microsoft Internet Explorer provided by D-Link Au...

Address: http://192.168.0.1/Advanced/Inbound_Filter.shtml

Product Page: DIR-615 Hardware Version: B2 Firmware Version: 2.21P1

D-Link

DIR-615 // SETUP ADVANCED TOOLS STATUS SUPPORT

VIRTUAL SERVER
PORT FORWARDING
APPLICATION RULES
NETWORK FILTER
ACCESS CONTROL
WEBSITE FILTER
INBOUND FILTER
FIREWALL SETTINGS
ADVANCED WIRELESS
WI-FI PROTECTED SETUP
ADVANCED NETWORK

INBOUND FILTER

The Inbound Filter option is an advanced method of controlling data received from the Internet. With this feature you can configure inbound data filtering rules that control data based on an IP address range.

Inbound Filters can be used for limiting access to a server on your network to a system or group of systems. Filter rules can be used with Virtual Server, Port Forwarding, or Remote Administration features.

ADD INBOUND FILTER RULE

Name:

Action:

Remote IP Range: Enable Remote IP Start Remote IP End

<input type="checkbox"/>	0.0.0.0	255.255.255.255
<input type="checkbox"/>	0.0.0.0	255.255.255.255
<input type="checkbox"/>	0.0.0.0	255.255.255.255
<input type="checkbox"/>	0.0.0.0	255.255.255.255
<input type="checkbox"/>	0.0.0.0	255.255.255.255
<input type="checkbox"/>	0.0.0.0	255.255.255.255
<input type="checkbox"/>	0.0.0.0	255.255.255.255
<input type="checkbox"/>	0.0.0.0	255.255.255.255
<input type="checkbox"/>	0.0.0.0	255.255.255.255

Add Clear

INBOUND FILTER RULES LIST

Name	Action	Remote IP Range

Helpful Hints...
 Give each rule a Name that is meaningful to you.
 Each rule can either Allow or Deny access from the WAN.
 Up to eight ranges of WAN IP addresses can be controlled by each rule. The checkbox by each IP range can be used to disable ranges already defined.
 The starting and ending IP addresses are WAN-side address.
 Click the Add or Update button to store a finished rule in the Rules List below.
 Click the Edit icon in the Rules List to change a rule.
 Click the Delete icon in the Rules List to permanently remove a rule.
 More...

D-LINK SYSTEMS, INC. | WIRELESS ROUTER : Advanced / Firewall Settings - Microsoft Internet Explorer provided by D-Link ...

Address: http://192.168.0.1/Advanced/Firewall.shtml

D-Link

DIR-615 // SETUP ADVANCED TOOLS STATUS SUPPORT

FIREWALL SETTINGS

The Firewall Settings allow you to set a single computer on your network outside of the router.

Save Settings Don't Save Settings

FIREWALL SETTINGS

Enable SPI:

NAT ENDPOINT FILTERING

UDP Endpoint Filtering: Endpoint Independent Address Restricted Port And Address Restricted

TCP Endpoint Filtering: Endpoint Independent Address Restricted Port And Address Restricted

ANTI-SPOOF CHECKING

Enable anti-spoof checking:

DMZ HOST

The DMZ (Demilitarized Zone) option lets you set a single computer on your network outside of the router. If you have a computer that cannot run Internet applications successfully from behind the router, then you can place the computer into the DMZ for unrestricted Internet access.

Note: Putting a computer in the DMZ may expose that computer to a variety of security risks. Use of this option is only recommended as a last resort.

Enable DMZ:

DMZ IP Address: 0.0.0.0 << Computer Name

Helpful Hints...
Enable the DMZ option only as a last resort. If you are having trouble using an application from a computer behind the router, first try opening ports associated with the application in the Virtual Server or Port Forwarding sections.
More...

D-LINK SYSTEMS, INC. | WIRELESS ROUTER : Advanced / Advanced Wireless - Microsoft Internet Explorer provided by D-Link ...

Address: http://192.168.0.1/Advanced/Advanced_Wireless.shtml

Product Page: DIR-615 Hardware Version: B2 Firmware Version: 2.21P1

D-Link

DIR-615 // SETUP ADVANCED TOOLS STATUS SUPPORT

ADVANCED WIRELESS

If you are not familiar with these Advanced Wireless settings, please read the help section before attempting to modify these settings.

Save Settings Don't Save Settings

ADVANCED WIRELESS SETTINGS

Transmit Power: High

Beacon Period: 100 (20..1000)

RTS Threshold: 2346 (0..2347)

Fragmentation Threshold: 2346 (256..2346)

DTIM Interval: 1 (1..255)

802.11d Enable:

WLAN Partition:

WMM Enable:

Short GI:

Helpful Hints...
It is recommended that you leave these parameters at their default values. Adjusting them could limit the performance of your wireless network.
Use 802.11d only for countries where it is required.
Enabling WMM can help control latency and jitter when transmitting multimedia content over a wireless connection.
More...

WIRELESS

Product Page: DIR-615 Hardware Version: B2 Firmware Version: 2.21P1

D-Link

DIR-615 // SETUP ADVANCED TOOLS STATUS SUPPORT

VIRTUAL SERVER

PORT FORWARDING

APPLICATION RULES

NETWORK FILTER

ACCESS CONTROL

WEBSITE FILTER

INBOUND FILTER

FIREWALL SETTINGS

ADVANCED WIRELESS

WI-FI PROTECTED SETUP

ADVANCED NETWORK

WI-FI PROTECTED SETUP

Wi-Fi Protected Setup is used to easily add devices to a network using a PIN or button press. Devices must support Wi-Fi Protected Setup in order to be configured by this method.

Save Settings Don't Save Settings

WI-FI PROTECTED SETUP

Enable :

Lock Wireless Security Settings :

Reset to Unconfigured

PIN SETTINGS

Current PIN : 14954894

Reset PIN to Default Generate New PIN

ADD WIRELESS STATION

Add Wireless Device with WPS

Helpful Hints...

Enable if other wireless devices you wish to include in the local network support Wi-Fi Protected Setup.

Only "Admin" account can change security settings.

Lock Wireless Security Settings after all wireless network devices have been configured.

Click Add Wireless Device Wizard to use Wi-Fi Protected Setup to add wireless devices to the wireless network.

More...

WIRELESS

Product Page: DIR-615 Hardware Version: B2 Firmware Version: 2.21P1

D-Link

DIR-615 // SETUP ADVANCED TOOLS STATUS SUPPORT

VIRTUAL SERVER

PORT FORWARDING

APPLICATION RULES

NETWORK FILTER

ACCESS CONTROL

WEBSITE FILTER

INBOUND FILTER

FIREWALL SETTINGS

ADVANCED WIRELESS

WI-FI PROTECTED SETUP

ADVANCED NETWORK

ADVANCED NETWORK

If you are not familiar with these Advanced Network settings, please read the help section before attempting to modify these settings.

Save Settings Don't Save Settings

UPNP

Universal Plug and Play (UPnP) supports peer-to-peer Plug and Play functionality for network devices.

Enable UPnP :

WAN PING

If you enable this feature, the WAN port of your router will respond to ping requests from the Internet that are sent to the WAN IP Address.

Enable WAN Ping Respond :

WAN Ping Inbound Filter : Allow All

Details : Allow All

WAN PORT SPEED

WAN Port Speed : Auto 10/100Mbps

10Mbps

100Mbps

Auto 10/100Mbps

MULTICAST STREAMS

Enable Multicast Streams :

Helpful Hints...

UPnP helps other UPnP LAN hosts interoperate with the router. Leave the UPnP option enabled as long as the LAN has other UPnP applications.

For added security, it is recommended that you disable the WAN Ping Respond option. Ping is often used by malicious Internet users to locate active networks or PCs.

The WAN speed is usually detected automatically. If you are having problems connecting to the WAN, try selecting the speed manually.

If you are having trouble receiving multicast streams from the Internet, make sure the Multicast Streams option is enabled.

More...

WIRELESS

D-LINK SYSTEMS, INC. | WIRELESS ROUTER : Tools / Admin - Microsoft Internet Explorer provided by D-Link Australia

Address: http://192.168.0.1/Tools/Admin.shtml

Product Page: DIR-615 Hardware Version: B2 Firmware Version: 2.21P1

D-Link

DIR-615	SETUP	ADVANCED	TOOLS	STATUS	SUPPORT
ADMIN	ADMINISTRATOR SETTINGS				Helpful Hints... For security reasons, it is recommended that you change the password for the Admin and User accounts. Be sure to write down the new and passwords to avoid having to reset the router in case they are forgotten. Enabling Remote Management, allows you or others to change the router configuration from a computer on the Internet. Choose a port to open for remote management. Select a filter that controls access as needed for this admin port. If you do not see the filter you need in the list of filters, go to the Advanced → Inbound Filter screen and create a new filter. More...
TIME	The 'admin' and 'user' accounts can access the management interface. The admin has read/write access and can change passwords, while the user has read-only access. By default there is no password configured. It is highly recommended that you create a password to keep your router secure. <input type="button" value="Save Settings"/> <input type="button" value="Don't Save Settings"/>				
SYSLOG	ADMIN PASSWORD				
EMAIL SETTINGS	Please enter the same password into both boxes, for confirmation. Password : <input type="text"/> Verify Password : <input type="text"/>				
SYSTEM	USER PASSWORD				
FIRMWARE	Please enter the same password into both boxes, for confirmation. Password : <input type="text"/> Verify Password : <input type="text"/>				
DYNAMIC DNS	SYSTEM NAME				
SYSTEM CHECK	Gateway Name : <input type="text" value="D-Link Systems DIR-615"/>				
SCHEDULES	ADMINISTRATION				
	Enable Remote Management : <input type="checkbox"/> Remote Admin Port : <input type="text" value="8080"/> Remote Admin Inbound Filter : <input type="text" value="Allow All"/> Details : <input type="text" value="Allow All"/>				

Done Internet

D-LINK SYSTEMS, INC. | WIRELESS ROUTER : Tools / Time - Microsoft Internet Explorer provided by D-Link Australia

Address: http://192.168.0.1/Tools/Time.shtml

Product Page: DIR-615 Hardware Version: B2 Firmware Version: 2.21P1

D-Link

DIR-615	SETUP	ADVANCED	TOOLS	STATUS	SUPPORT														
ADMIN	TIME				Helpful Hints... Good timekeeping is important for accurate logs and scheduled firewall rules. More...														
TIME	The Time Configuration option allows you to configure, update, and maintain the correct time on the internal system clock. From this section you can set the time zone that you are in and set the NTP (Network Time Protocol) Server. Daylight Saving can also be configured to automatically adjust the time when needed. <input type="button" value="Save Settings"/> <input type="button" value="Don't Save Settings"/>																		
SYSLOG	TIME CONFIGURATION																		
EMAIL SETTINGS	Current Router Time : Saturday, 31 January 2004 7:44:09 PM Time Zone : <input type="text" value="(GMT-08:00) Pacific Time (US/Canada), Tijuana"/>																		
SYSTEM	Enable Daylight Saving : <input type="checkbox"/> Daylight Saving Offset : <input type="text" value="+1:00"/>																		
FIRMWARE	Daylight Saving Dates : <table border="0"> <tr> <td>DST Start</td> <td>Month</td> <td>Week</td> <td>Day of Week</td> <td>Time</td> </tr> <tr> <td>Apr</td> <td>1st</td> <td>Sun</td> <td>2 am</td> <td></td> </tr> <tr> <td>DST End</td> <td>Oct</td> <td>5th</td> <td>Sun</td> <td>2 am</td> </tr> </table>				DST Start	Month	Week	Day of Week	Time	Apr	1st	Sun	2 am		DST End	Oct	5th	Sun	2 am
DST Start	Month	Week	Day of Week	Time															
Apr	1st	Sun	2 am																
DST End	Oct	5th	Sun	2 am															
DYNAMIC DNS	AUTOMATIC TIME CONFIGURATION																		
SYSTEM CHECK	Enable NTP Server : <input type="checkbox"/> NTP Server Used : <input type="text"/> << <input type="text" value="Select NTP Server"/>																		
SCHEDULES	SET THE DATE AND TIME MANUALLY																		
	Date And Time : Year <input type="text" value="2004"/> Month <input type="text" value="Jan"/> Day <input type="text" value="31"/> Hour <input type="text" value="07"/> Minute <input type="text" value="44"/> Second <input type="text" value="06"/> <input type="text" value="PM"/> <input type="button" value="Copy Your Computer's Time Settings"/>																		

Done Internet

WIRELESS

Copyright © 2004-2007 D-Link Systems, Inc.

D-LINK SYSTEMS, INC. | WIRELESS ROUTER : Tools / SysLog - Microsoft Internet Explorer provided by D-Link Australia

Address: http://192.168.0.1/Tools/SysLog.shtml

Product Page: DIR-615 Hardware Version: B2 Firmware Version: 2.21P1

D-Link

DIR-615	SETUP	ADVANCED	TOOLS	STATUS	SUPPORT
ADMIN	SYSLOG				Helpful Hints... A System Logger (syslog) is a server that collects in one place the logs from different sources. If the LAN includes a syslog server, you can use this option to send the router's logs to that server. More...
TIME	The SysLog options allow you to send log information to a SysLog Server. <input type="button" value="Save Settings"/> <input type="button" value="Don't Save Settings"/>				
SYSLOG	SYSLOG SETTINGS				
EMAIL SETTINGS	Enable Logging To Syslog Server : <input type="checkbox"/>				
SYSTEM					
FIRMWARE					
DYNAMIC DNS					
SYSTEM CHECK					
SCHEDULES					
WIRELESS					

Copyright © 2004-2007 D-Link Systems, Inc.

D-LINK SYSTEMS, INC. | WIRELESS ROUTER : Tools / Email Settings - Microsoft Internet Explorer provided by D-Link Australia

Address: http://192.168.0.1/Tools/Email.shtml

Product Page: DIR-615 Hardware Version: B2 Firmware Version: 2.21P1

D-Link

DIR-615	SETUP	ADVANCED	TOOLS	STATUS	SUPPORT
ADMIN	EMAIL SETTINGS				Helpful Hints... You may want to make the email settings similar to those of your email client program. More...
TIME	The Email feature can be used to send the system log files, router alert messages, and firmware update notification to your email address. <input type="button" value="Save Settings"/> <input type="button" value="Don't Save Settings"/>				
SYSLOG	ENABLE				
EMAIL SETTINGS	Enable Email Notification : <input type="checkbox"/>				
SYSTEM	EMAIL SETTINGS				
FIRMWARE	From Email Address: <input type="text"/> To Email Address: <input type="text"/> SMTP Server Address: <input type="text"/> Enable Authentication : <input type="checkbox"/> Account Name: <input type="text"/> Password: <input type="text"/> Verify Password: <input type="text"/>				
DYNAMIC DNS	EMAIL LOG WHEN FULL OR ON SCHEDULE				
SYSTEM CHECK	On Log Full: <input type="checkbox"/> On Schedule: <input type="checkbox"/> Schedule : <input type="text" value="Never"/> Details : <input type="text" value="Never"/>				
SCHEDULES					
WIRELESS					

Product Page: DIR-615 Hardware Version: B2 Firmware Version: 2.21P1

D-Link

DIR-615	SETUP	ADVANCED	TOOLS	STATUS	SUPPORT
ADMIN	SYSTEM SETTINGS				Helpful Hints...
TIME	<p>The System Settings section allows you to reboot the device, or restore the router to the factory default settings. Restoring the unit to the factory default settings will erase all settings, including any rules that you have created.</p> <p>The current system settings can be saved as a file onto the local hard drive. The saved file or any other saved setting file created by device can be uploaded into the unit.</p>				<p>Once your router is configured the way you want it, you can save the configuration settings to a configuration file.</p> <p>You might need this file so that you can load your configuration later in the event that the router's default settings are restored.</p> <p>To save the configuration, click the Save Configuration button.</p> <p>More...</p>
SYSLOG	SYSTEM SETTINGS				
EMAIL SETTINGS	<p>Save To Local Hard Drive: <input type="button" value="Save Configuration"/></p> <p>Load From Local Hard Drive: <input type="text"/> <input type="button" value="Browse..."/> <input type="button" value="Restore Configuration from File"/></p> <p>Restore To Factory Default: <input type="button" value="Restore Factory Defaults"/> Restore all settings to the factory defaults.</p> <p>Reboot The Device: <input type="button" value="Reboot the Device"/></p>				
SYSTEM					
FIRMWARE					
DYNAMIC DNS					
SYSTEM CHECK					
SCHEDULES					
WIRELESS					

Copyright © 2004-2007 D-Link Systems, Inc.

Product Page: DIR-615 Hardware Version: B2 Firmware Version: 2.21P1

D-Link

DIR-615	SETUP	ADVANCED	TOOLS	STATUS	SUPPORT
ADMIN	FIRMWARE				Helpful Hints...
TIME	<p>There may be new firmware for your DIR-615 to improve functionality and performance. To upgrade the firmware, locate the upgrade file on the local hard drive with the Browse button. Once you have found the file to be used, click the Upload button below to start the firmware upgrade.</p> <p><input type="button" value="Save Settings"/> <input type="button" value="Don't Save Settings"/></p>				<p>Firmware updates are released periodically to improve the functionality of your router and to add features. If you run into a problem with a specific feature of the router, check if updated firmware is available for your router.</p> <p>More...</p>
SYSLOG	FIRMWARE INFORMATION				
EMAIL SETTINGS	<p>Current Firmware Version : 2.21P1 Current Firmware Date : 2007/09/14</p> <p>Check Online Now for Latest Firmware Version : <input type="button" value="Check Now"/></p>				
SYSTEM	FIRMWARE UPGRADE				
FIRMWARE	<p>Note: Some firmware upgrades reset the configuration options to the factory defaults. Before performing an upgrade, be sure to save the current configuration from the Tools → System screen.</p> <p>To upgrade the firmware, your PC must have a wired connection to the router. Enter the name of the firmware upgrade file, and click on the Upload button.</p> <p>Upload : <input type="text"/> <input type="button" value="Browse..."/> <input type="button" value="Upload"/></p>				
DYNAMIC DNS	FIRMWARE UPGRADE NOTIFICATION OPTIONS				
SYSTEM CHECK	<p>Automatically Check Online for Latest Firmware Version : <input checked="" type="checkbox"/></p> <p>Email Notification of Newer Firmware Version : <input type="checkbox"/></p>				
SCHEDULES					
WIRELESS					

D-LINK SYSTEMS, INC. | WIRELESS ROUTER : Tools/Dynamic DNS - Microsoft Internet Explorer provided by D-Link Australia

Address: http://192.168.0.1/Tools/Dynamic_DNS.shtml

Product Page: DIR-615 Hardware Version: B2 Firmware Version: 2.21P1

D-Link

DIR-615	SETUP	ADVANCED	TOOLS	STATUS	SUPPORT
ADMIN	DYNAMIC DNS				Helpful Hints... To use this feature, you must first have a Dynamic DNS account from one of the providers in the drop down menu. More...
TIME	<p>The DDNS feature allows you to host a server (Web, FTP, Game Server, etc...) using a domain name that you have purchased (www.whateveryounameis.com) with your dynamically assigned IP address. Most broadband Internet Service Providers assign dynamic (changing) IP addresses. Using a DDNS service provider, your friends can enter your host name to connect to your game server no matter what your IP address is.</p> <p>Sign up for D-Link's Free DDNS service at www.DLinkDDNS.com.</p> <p>Save Settings Don't Save Settings</p>				
SYNLOG	DYNAMIC DNS				
EMAIL SETTINGS	<p>Enable Dynamic DNS: <input type="checkbox"/></p> <p>Server Address: <input type="text"/> << Select Dynamic DNS Server</p> <p>Host Name: <input type="text"/> (e.g.: me.mydomain.net)</p> <p>Username or Key: <input type="text"/></p> <p>Password or Key: <input type="text"/></p> <p>Verify Password or Key: <input type="text"/></p> <p>Timeout: 576 (hours)</p> <p>Status: Disconnect</p>				
SYSTEM					
FIRMWARE					
DYNAMIC DNS					
SYSTEM CHECK					
SCHEDULES					
WIRELESS					
Copyright © 2004-2007 D-Link Systems, Inc.					

D-LINK SYSTEMS, INC. | WIRELESS ROUTER : Tools / System Check - Microsoft Internet Explorer provided by D-Link Australia

Address: http://192.168.0.1/Tools/System_Check.shtml

Product Page: DIR-615 Hardware Version: B2 Firmware Version: 2.21P1

D-Link

DIR-615	SETUP	ADVANCED	TOOLS	STATUS	SUPPORT
ADMIN	PING TEST				Helpful Hints... "Ping" checks whether a computer on the Internet is running and responding. Enter either the IP address of the target computer or enter its fully qualified domain name. More...
TIME	<p>Ping Test sends "ping" packets to test a computer on the Internet.</p>				
SYNLOG	PING TEST				
EMAIL SETTINGS	<p>Host Name or IP Address : <input type="text"/> Ping Stop</p>				
SYSTEM	PING RESULT				
FIRMWARE	<p>Enter a host name or IP address above and click 'Ping'</p>				
DYNAMIC DNS					
SYSTEM CHECK					
SCHEDULES					
WIRELESS					
Copyright © 2004-2007 D-Link Systems, Inc.					

D-LINK SYSTEMS, INC. | WIRELESS ROUTER : Tools / Schedules - Microsoft Internet Explorer provided by D-Link Australia

Address: http://192.168.0.1/Tools/Schedules.shtml

Product Page: DIR-615 Hardware Version: B2 Firmware Version: 2.21P1

D-Link

DIR-615 // SETUP ADVANCED TOOLS STATUS SUPPORT

ADMIN

TIME

SYNLOG

EMAIL SETTINGS

SYSTEM

FIRMWARE

DYNAMIC DNS

SYSTEM CHECK

SCHEDULES

SCHEDULES

The Schedule configuration option is used to manage schedule rules for various firewall and parental control features.

ADD SCHEDULE RULE

Name:

Day(s): All Week Select Day(s)

Sun Mon Tue Wed Thu Fri Sat

All Day - 24 hrs:

Start Time: : AM (hour:minute, 12 hour time)

End Time: : AM (hour:minute, 12 hour time)

SCHEDULE RULES LIST

Name	Day(s)	Time Frame

Helpful Hints...

Schedules are used with a number of other features to define when those features are in effect.

Give each schedule a name that is meaningful to you. For example, a schedule for Monday through Friday from 3:00pm to 9:00pm, might be called "After School".

Click **Save** to add a completed schedule to the list below.

Click the **Edit** icon to change an existing schedule.

Click the **Delete** icon to permanently delete a schedule.

[More...](#)

WIRELESS

D-LINK SYSTEMS, INC. | WIRELESS ROUTER : Status / Device Info - Microsoft Internet Explorer provided by D-Link Australia

Address: http://192.168.0.1/Status/Device_Info.shtml

Product Page: DIR-615 Hardware Version: B2 Firmware Version: 2.21P1

D-Link

DIR-615 // SETUP ADVANCED TOOLS STATUS SUPPORT

DEVICE INFO

LOGS

STATISTICS

INTERNET SESSIONS

WIRELESS

DEVICE INFORMATION

All of your Internet and network connection details are displayed on this page. The firmware version is also displayed here.

GENERAL

Time: Saturday, 31 January 2004 7:45:28 PM

Firmware Version: 2.21P1, 2007/09/14

WAN

Connection Type: DHCP Client

Cable Status: Disconnected

Network Status: Disconnected

Connection Up Time: N/A

MAC Address: 00:18:11:EB:D3:04

IP Address: 0.0.0.0

Subnet Mask: 0.0.0.0

Default Gateway: 0.0.0.0

Primary DNS Server: 0.0.0.0

Secondary DNS Server: 0.0.0.0

Helpful Hints...

All of your WAN and LAN connection details are displayed here.

[More...](#)

WIRELESS

D-LINK SYSTEMS, INC. | WIRELESS ROUTER : Status / Device Info - Microsoft Internet Explorer provided by D-Link Australia

Address: http://192.168.0.1/Status/Device_Info.shtml

MAC Address : 00:18:11:EB:D3:04
 IP Address : 0.0.0.0
 Subnet Mask : 0.0.0.0
 Default Gateway : 0.0.0.0
 Primary DNS Server : 0.0.0.0
 Secondary DNS Server : 0.0.0.0

LAN

MAC Address : 00:18:11:EB:D3:03
 IP Address : 192.168.0.1
 Subnet Mask : 255.255.255.0
 DHCP Server : Enabled

WIRELESS LAN

Wireless Radio : Enabled
 MAC Address : 00:18:11:EB:D3:03
 Network Name (SSID) : dlink
 Channel : 1
 Security Mode : Disabled
 Wi-Fi Protected Setup : Enabled/Not Configured

LAN COMPUTERS

IP Address	Name (if any)	MAC

WIRELESS

D-LINK SYSTEMS, INC. | WIRELESS ROUTER : Status / Logs - Microsoft Internet Explorer provided by D-Link Australia

Address: http://192.168.0.1/Status/Logs.shtml

Product Page: DIR-615 Hardware Version: B2 Firmware Version: 2.21P1

D-Link

DIR-615 // SETUP ADVANCED TOOLS STATUS SUPPORT

LOGS

Use this option to view the router logs. You can define what types of events you want to view and the event levels to view. This router also has internal syslog server support so you can send the log files to a computer on your network that is running a syslog utility.

LOG OPTIONS

What to View : Firewall & Security System Router Status
 View Levels : Critical Warning Informational

Apply Log Settings Now

LOG DETAILS

Refresh Clear Email Now Save Log

11 Log Entries:

Priority	Time	Message
[INFO]	Sat Jan 31 19:11:10 2004	Allowed configuration authentication by IP address 192.168.0.115
[INFO]	Sat Jan 31 19:04:29 2004	Above message repeated 1 times
[INFO]	Sat Jan 31 18:08:27 2004	Starting DHCP server
[INFO]	Sat Jan 31 18:08:18 2004	LAN interface is up
[INFO]	Sat Jan 31 18:08:18 2004	LAN Ethernet Carrier Detected

Helpful Hints...
 Check the log frequently to detect unauthorized network usage.
 You can also have the log mailed to you periodically. Refer to Tools -> EMail.
 More...

Product Page: DIR-615 Hardware Version: B2 Firmware Version: 2.21P1

D-Link

DIR-615 //	SETUP	ADVANCED	TOOLS	STATUS	SUPPORT
-------------------	-------	----------	-------	---------------	---------

DEVELOPER INFO

TRAFFIC STATISTICS

Traffic Statistics display Receive and Transmit packets passing through your router.

Refresh Statistics Clear Statistics

LAN STATISTICS

Sent : 3993	Received : 2211
TX Packets Dropped : 0	RX Packets Dropped : 0
Collisions : 0	Errors : 0

WAN STATISTICS

Sent : 2	Received : 0
TX Packets Dropped : 0	RX Packets Dropped : 0
Collisions : 0	Errors : 0

WIRELESS STATISTICS

Sent : 1434	Received : 0
TX Packets Dropped : 0	RX Packets Dropped : 0
	Errors : 0

WIRELESS

Helpful Hints... This is a summary of the number of packets that have passed between the WAN and the LAN since the router was last initialized.

More...

Product Page: DIR-615 Hardware Version: B2 Firmware Version: 2.21P1

D-Link

DIR-615 //	SETUP	ADVANCED	TOOLS	STATUS	SUPPORT
-------------------	-------	----------	-------	--------	----------------

DEVELOPER INFO

INTERNET SESSIONS

This page displays the full details of active internet sessions to your router.

Local	NAT	Internet	Protocol	State	Dir	Priority	Time Out

WIRELESS

Helpful Hints... This is a list of all active conversations between WAN computers and LAN computers.

More...

Copyright © 2004-2007 D-Link Systems, Inc.

Product Page: DIR-615 Hardware Version: B2 Firmware Version: 2.21P1

D-Link

DIR-615 //	SETUP	ADVANCED	TOOLS	STATUS	SUPPORT
-------------------	-------	----------	-------	--------	----------------

DEVELOPER INFO

WIRELESS

Use this option to view the wireless clients that are connected to your wireless router.

NUMBER OF WIRELESS CLIENTS : 0

MAC Address	IP Address	Mode	Rate	Signal (%)

WIRELESS

Helpful Hints... This is a list of all wireless clients that are currently connected to your wireless router.

More...

Copyright © 2004-2007 D-Link Systems, Inc.