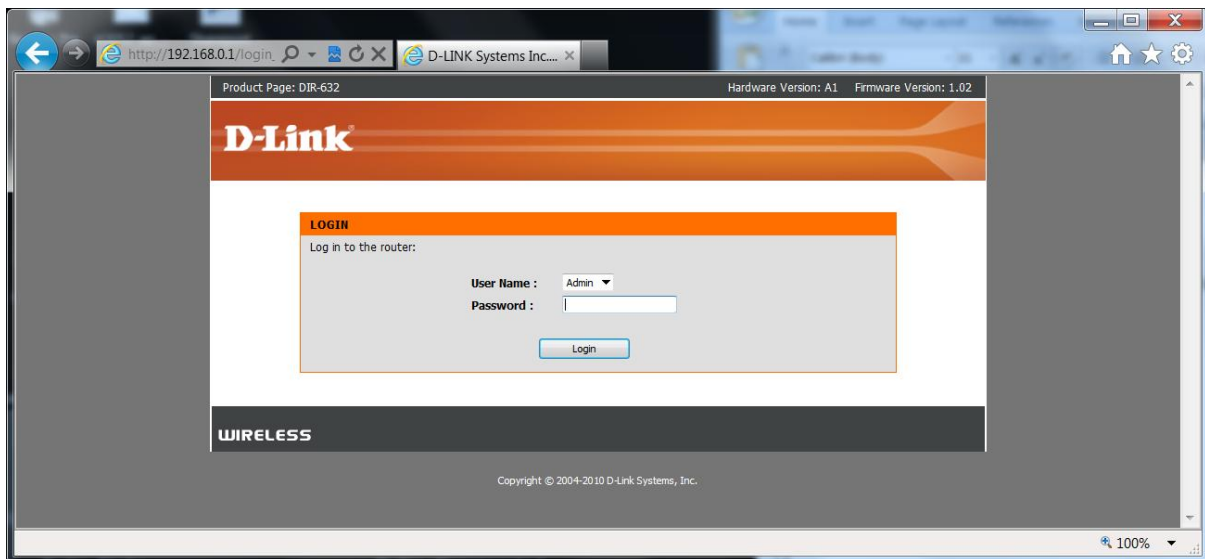


DIR-632 How to update the firmware

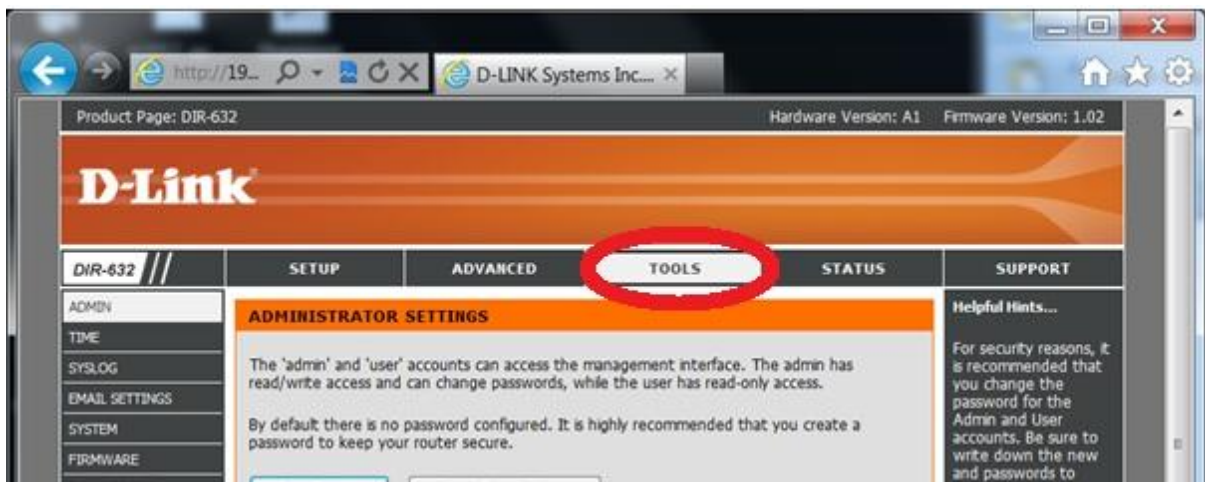
1. Using an Internet Browser type into the URL:

http://192.168.0.1



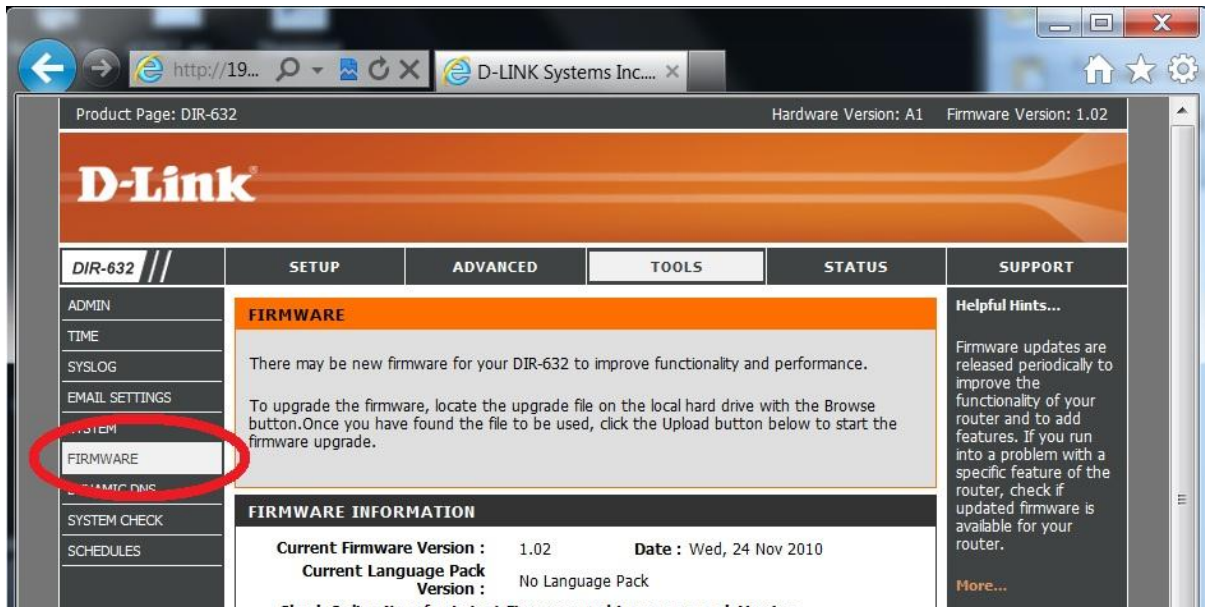
Type in your Password if you have changed it, or leave it blank and then click on the Login button.

2. Click on the Tools menu:



3. Click on the Firmware menu.

DIR-632 How to update the firmware

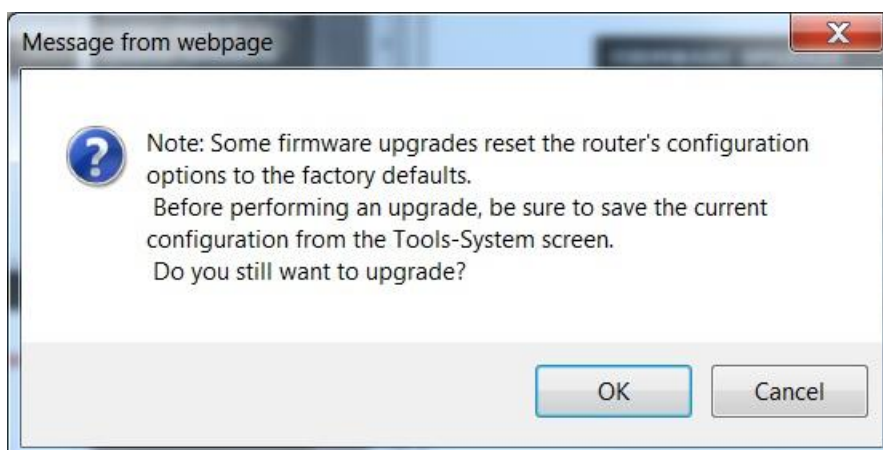


4. Under the Firmware Upgrade menu click the Browse button:

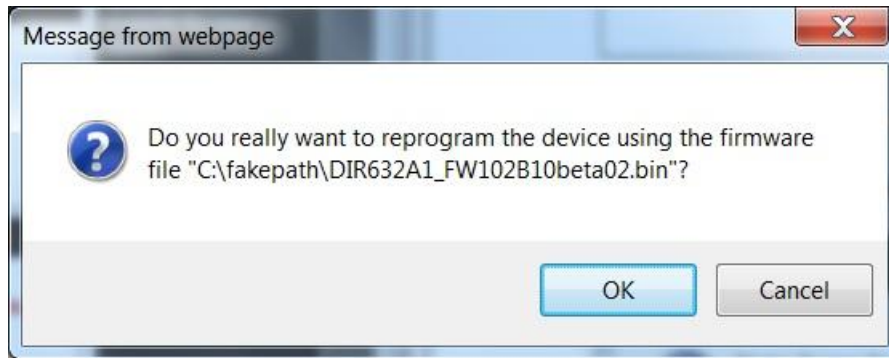


Select the firmware file saved to your computer, now click on the Upload button.

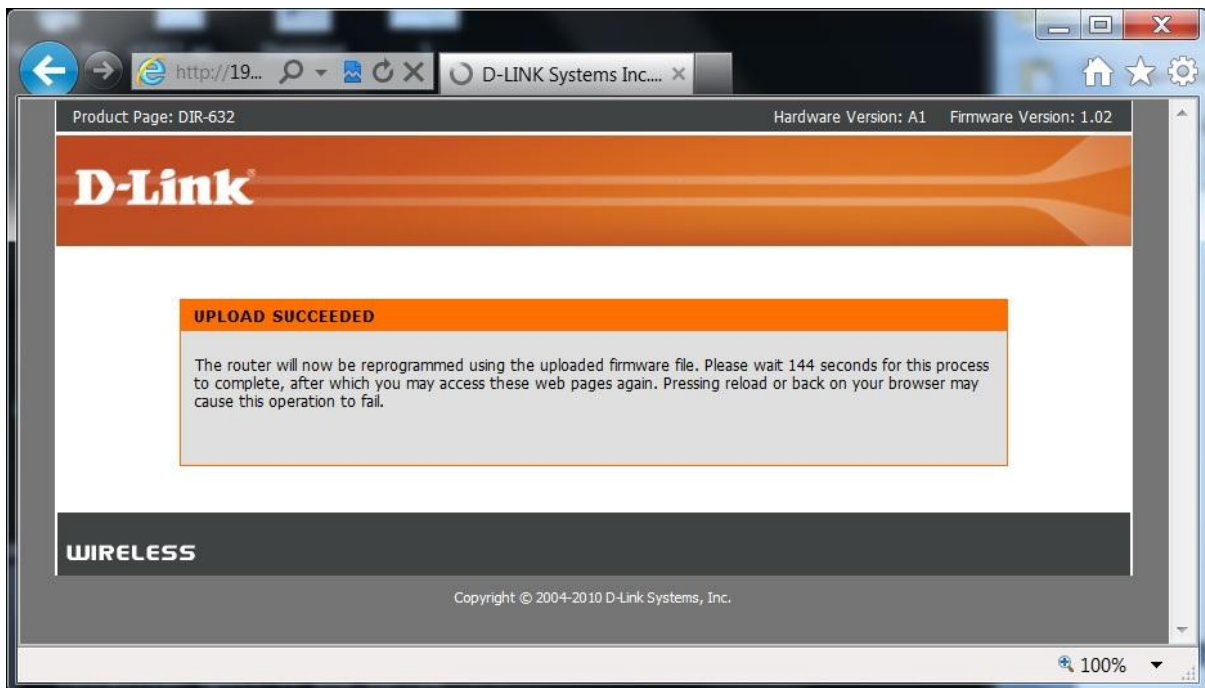
5. Click the OK button the below prompts:



DIR-632 How to update the firmware

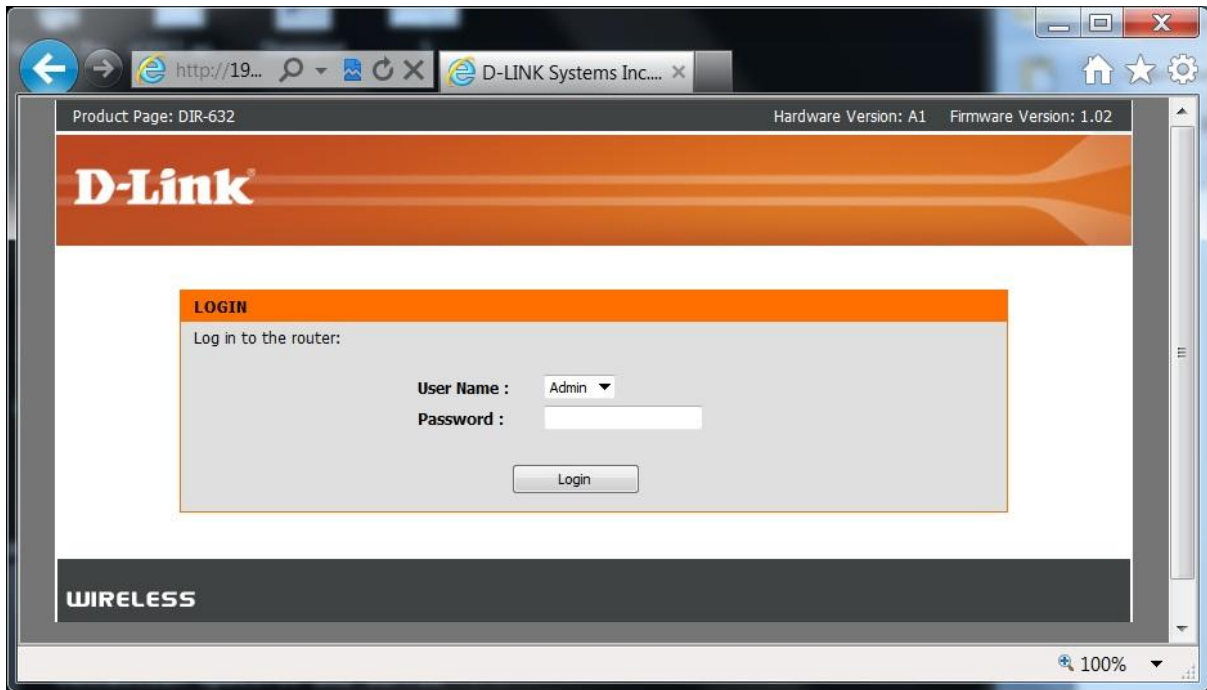


6. Please wait for the process to count down from 150 seconds:

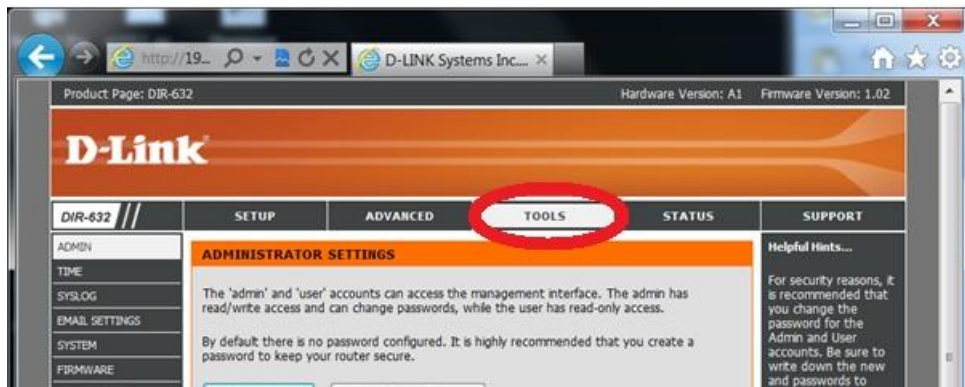


7. Once the firmware has completed the process, you will need to login again as per Step 1:

DIR-632 How to update the firmware

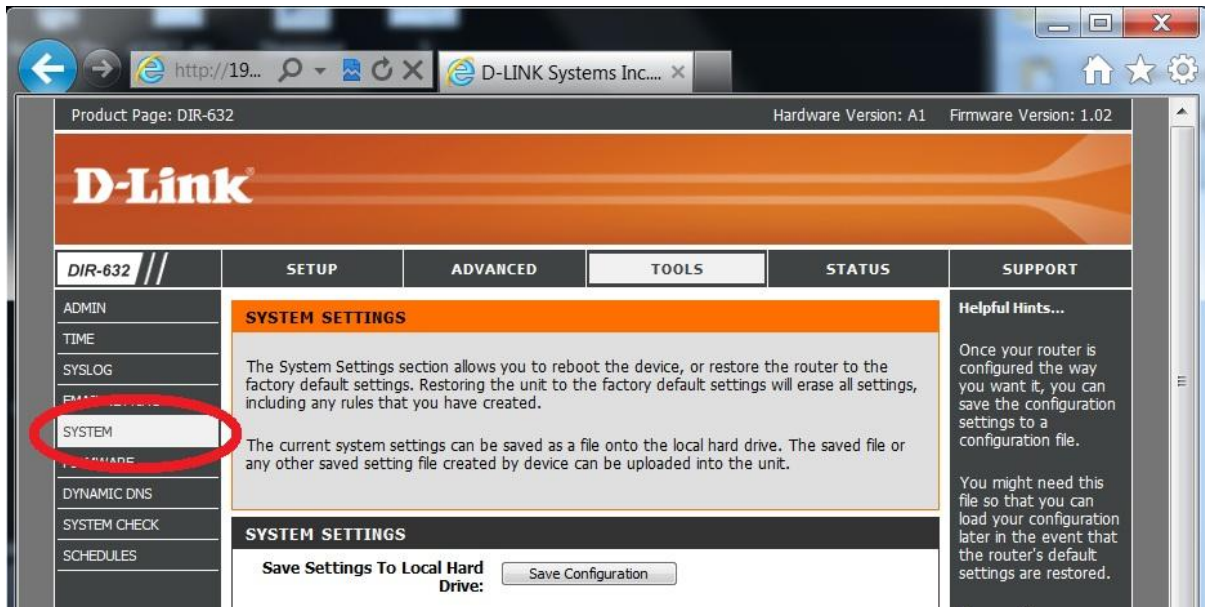


8. Click on the Tools menu again:



9. Click on the System menu:

DIR-632 How to update the firmware



10. Now click on the Restore Factory Defaults button:



11. Once the DIR-632 has rebooted with the Default Configuration applied please configure your DIR-632 to your networking requirements.