

D-LINK SYSTEMS, INC | WIRELESS ROUTER | HOME - Windows Internet Explorer

http://192.168.0.1/login.php

File Edit View Favorites Tools Help

D-LINK SYSTEMS, INC | WIRELESS ROUTER | HOME

Product Page : DIR-685 Hardware Version : A1 Firmware Version : 1.00

D-Link®


LOGIN

Log into the router:

User Name

Password

Enter the correct password above and then type the characters you see in the picture below.



WIRELESS

Copyright © 2004-2007 D-Link Systems, Inc.

Done Internet 100%

D-LINK SYSTEMS, INC | WIRELESS ROUTER | HOME - Windows Internet Explorer

http://192.168.0.1/bsc_internet.php

File Edit View Favorites Tools Help

Product Page : DIR-685 Hardware Version : A1 Firmware Version : 1.00

D-Link

DIR-685	SETUP	ADVANCED	STORAGE	TOOLS	STATUS	SUPPORT
----------------	--------------	-----------------	----------------	--------------	---------------	----------------

Internet Setup
Wireless Setup
Network Setup
LCD Setup

INTERNET SETUP

If you are configuring the device for the first time, we recommend that you click on the Internet Connection Setup Wizard button and follow the instructions on the screen. If you wish to modify or configure the device settings manually, click the Manual Internet Connection Setup button.

INTERNET CONNECTION SETUP WIZARD

If you would like to utilize our easy to use Web-based Wizard to assist you in connecting your new D-Link Systems Router to the Internet, click on the button below.

Note: Before launching the wizard, please make sure you have followed all steps outlined in the Quick Installation Guide included in the package.

MANUAL INTERNET CONNECTION OPTIONS

If you would like to configure the Internet settings of your new D-Link Router manually, then click on the button below.

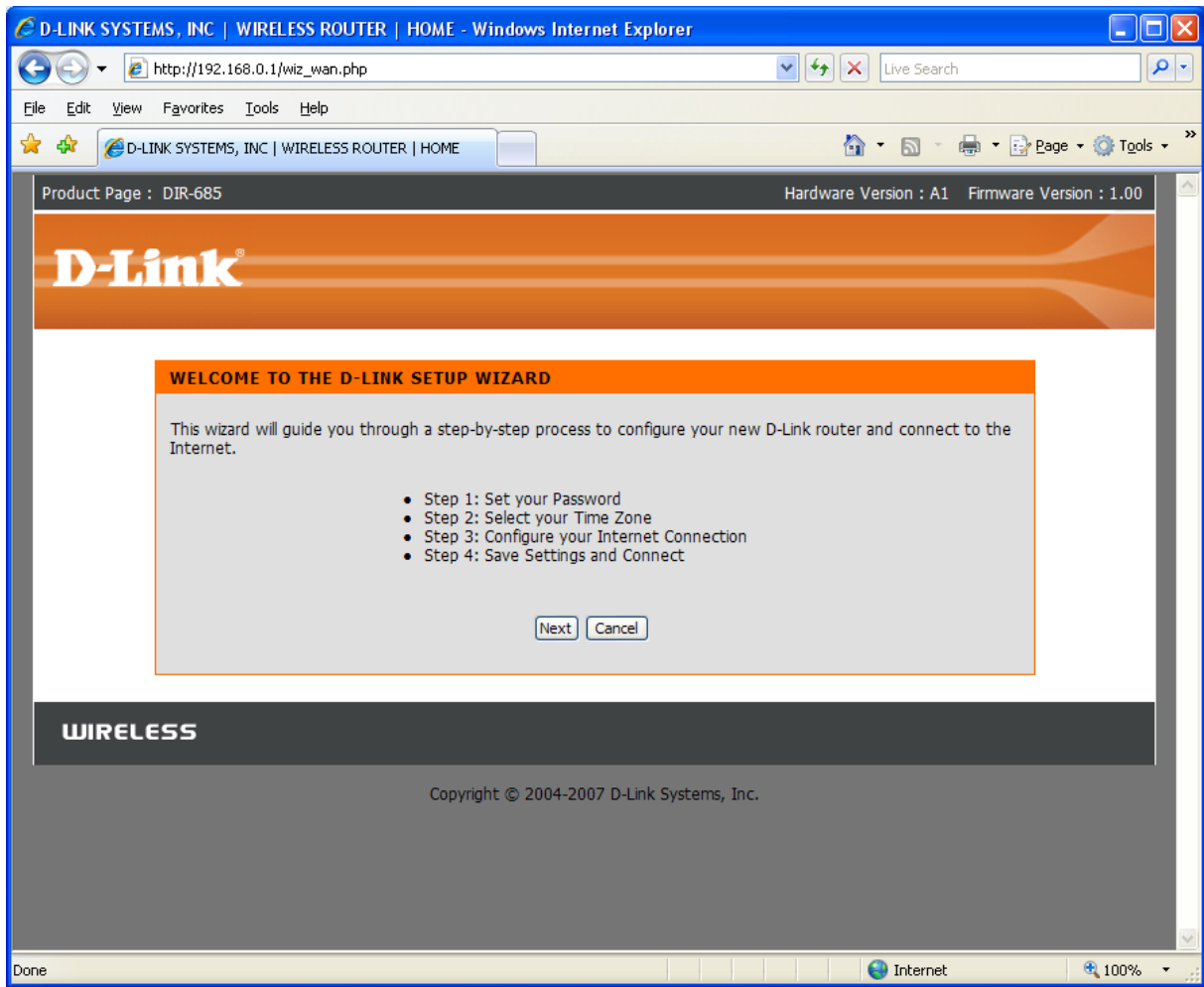
Helpful Hints..

- If you are new to networking and have never configured a router before, click on **Internet Connection Setup Wizard** and the router will guide you through a few simple steps to get your network up and running.
- If you consider yourself an advanced user and have configured a router before, click **Manual Internet Connection Setup** to input all the settings manually.

More...

Done Internet 100%

INTERNET SETUP WIZARD:



D-LINK SYSTEMS, INC | WIRELESS ROUTER | HOME - Windows Internet Explorer

http://192.168.0.1/wiz_wan.php

File Edit View Favorites Tools Help

D-LINK SYSTEMS, INC | WIRELESS ROUTER | HOME

Product Page : DIR-685 Hardware Version : A1 Firmware Version : 1.00

D-Link®

STEP 1: SET YOUR PASSWORD

By default, your new D-Link Router does not have a password configured for administrator access to the Web-based configuration pages. To secure your new networking device, please set and verify a password below:

Password :

Confirm Password :

WIRELESS

Copyright © 2004-2007 D-Link Systems, Inc.

Done Internet 100%

D-LINK SYSTEMS, INC | WIRELESS ROUTER | HOME - Windows Internet Explorer

http://192.168.0.1/wiz_wan.php

File Edit View Favorites Tools Help

D-LINK SYSTEMS, INC | WIRELESS ROUTER | HOME

Product Page : DIR-685 Hardware Version : A1 Firmware Version : 1.00

D-Link®

STEP 2: SELECT YOUR TIME ZONE

Select the appropriate time zone for your location. This information is required to configure the time-based options for the router.

Time Zone : (GMT+10:00) Canberra, Melbourne, Sydney

NTP Server Used : ntp1.dlink.com

Prev Next Cancel

WIRELESS

Copyright © 2004-2007 D-Link Systems, Inc.

Done Internet 100%


D-LINK SYSTEMS, INC | WIRELESS ROUTER | HOME - Windows Internet Explorer

http://192.168.0.1/wiz_wan.php

File Edit View Favorites Tools Help

D-LINK SYSTEMS, INC | WIRELESS ROUTER | HOME

Product Page : DIR-685 Hardware Version : A1 Firmware Version : 1.00



STEP 3: CONFIGURE YOUR INTERNET CONNECTION

- DHCP Connection (Dynamic IP Address)**
Choose this option if your Internet connection automatically provides you with an IP Address. Most Cable Modems use this type of connection.
- Username / Password Connection (PPPoE)**
Choose this option if your Internet connection requires a username and password to get online. Most DSL modems use this type of connection.
- Username / Password Connection (PPTP)**
Choose this option if your Internet connection requires a username and password to get online. Most DSL modems use this type of connection.
- Username / Password Connection (L2TP)**
Choose this option if your Internet connection requires a username and password to get online. Most DSL modems use this type of connection.
- Static IP Address Connection**
Choose this option if your Internet Setup Provider provided you with IP Address information that needs to be configured manually.
- Russia PPTP (Dual Access)**
Choose this option if your Internet connection requires a username and password to get online as well as a static route to access the Internet Service Provider's internal network. Certain ISPs in Russia use this type of connection.
- Russia L2TP (Dual Access)**
Choose this option if your Internet connection requires a username and password to get online as well as a static route to access the Internet Service Provider's internal network. Certain ISPs in Russia use this type of connection.
- Russia PPPoE (Dual Access)**
Choose this option if your Internet connection requires a username and password to get online as well as a static route to access the Internet Service Provider's internal network. Certain ISPs in Russia use this type of connection.

Prev Next Cancel

WIRELESS

Copyright © 2004-2007 D-Link Systems, Inc.

Done Internet 100%


D-LINK SYSTEMS, INC | WIRELESS ROUTER | HOME - Windows Internet Explorer

http://192.168.0.1/wiz_wan.php

File Edit View Favorites Tools Help

D-LINK SYSTEMS, INC | WIRELESS ROUTER | HOME

Product Page : DIR-685 Hardware Version : A1 Firmware Version : 1.00



DHCP CONNECTION (DYNAMIC IP ADDRESS)

To set up this connection, please make sure that you are connected to the D-Link Router using the PC that was originally connected to your broadband connection. If you are, then click the Clone MAC Address button to copy your computer's MAC Address to the D-Link Router.

MAC Address : 00 - 15 - C5 - 7A - EA - A4 (Optional)

Host Name : DIR-685

Note: You may also need to provide a Host Name. If you do not have or know this information, please contact your ISP.

WIRELESS

Copyright © 2004-2007 D-Link Systems, Inc.

Done Internet 100%

D-LINK SYSTEMS, INC | WIRELESS ROUTER | HOME - Windows Internet Explorer

http://192.168.0.1/wiz_wan.php

File Edit View Favorites Tools Help

D-LINK SYSTEMS, INC | WIRELESS ROUTER | HOME

Product Page : DIR-685 Hardware Version : A1 Firmware Version : 1.00

D-Link®

SETUP COMPLETE!

The Setup Wizard has completed. Click the Connect button to save your settings and reboot the router.

WIRELESS

Copyright © 2004-2007 D-Link Systems, Inc.

Done Internet 100%

D-LINK SYSTEMS, INC | WIRELESS ROUTER | HOME - Windows Internet Explorer

http://192.168.0.1/wiz_wan.php

File Edit View Favorites Tools Help

D-LINK SYSTEMS, INC | WIRELESS ROUTER | HOME

Product Page : DIR-685 Hardware Version : A1 Firmware Version : 1.00

D-Link®

SET USERNAME AND PASSWORD CONNECTION (PPPOE)

To set up this connection you will need to have a Username and Password from your Internet Service Provider. If you do not have this information, please contact your ISP.

Address Mode : Dynamic IP Static IP

IP Address :

User Name :

Password :

Verify Password :

Service Name : (Optional)

Note: You may also need to provide a Service Name. If you do not have or know this information, please contact your ISP.

WIRELESS

Copyright © 2004-2007 D-Link Systems, Inc.

Done Internet 100%

D-LINK SYSTEMS, INC | WIRELESS ROUTER | HOME - Windows Internet Explorer

http://192.168.0.1/wiz_wan.php

File Edit View Favorites Tools Help

D-LINK SYSTEMS, INC | WIRELESS ROUTER | HOME

Product Page : DIR-685 Hardware Version : A1 Firmware Version : 1.00

D-Link®

SETUP COMPLETE!

The Setup Wizard has completed. Click the Connect button to save your settings and reboot the router.

WIRELESS

Copyright © 2004-2007 D-Link Systems, Inc.

Done Internet 100%

D-LINK SYSTEMS, INC | WIRELESS ROUTER | HOME - Windows Internet Explorer

http://192.168.0.1/wiz_wan.php

File Edit View Favorites Tools Help

Product Page : DIR-685 Hardware Version : A1 Firmware Version : 1.00

D-Link®

SET STATIC IP ADDRESS CONNECTION

To set up this connection you will need to have a complete list of all the IP information provided by your Internet Service Provider. If you have a Static IP connection and do not have this information, please contact your ISP.

IP Address :

Subnet Mask :

Gateway Address :

Primary DNS Address :

Secondary DNS Address : (Optional)

WIRELESS

Copyright © 2004-2007 D-Link Systems, Inc.

Done Internet 100%

D-LINK SYSTEMS, INC | WIRELESS ROUTER | HOME - Windows Internet Explorer

http://192.168.0.1/wiz_wan.php

File Edit View Favorites Tools Help

D-LINK SYSTEMS, INC | WIRELESS ROUTER | HOME

Product Page : DIR-685 Hardware Version : A1 Firmware Version : 1.00

D-Link®

SETUP COMPLETE!

The Setup Wizard has completed. Click the Connect button to save your settings and reboot the router.

Prev Connect Cancel

WIRELESS

Copyright © 2004-2007 D-Link Systems, Inc.

Done Internet 100%

MANUAL INTERNET CONNECTION SETUP:

Product Page : DIR-685 Hardware Version : A1 Firmware Version : 1.00

D-Link

DIR-685 // SETUP ADVANCED STORAGE TOOLS STATUS SUPPORT

Internet Setup
Wireless Setup
Network Setup
LCD Setup

INTERNET CONNECTION

Use this section to configure your Internet Connection method. There are several connection methods to choose from: Static IP, DHCP, PPPoE, PPTP, L2TP, Russian PPTP(Dual Access), Russian PPPoE(Dual Access) and 3G. If you are unsure of your connection method, please contact your Internet Service Provider.

Note: If using the PPPoE option, you will need to remove or disable any PPPoE client software on your computers.

Save Settings Don't Save Settings

ACCESS POINT MODE

Use this to disable NAT on the router and turn it into an Access Point.

Enable Access Point Mode

INTERNET CONNECTION TYPE

Choose the mode to be used by the router to connect to the Internet.

My Internet Connection is : Static IP

STATIC IP ADDRESS INTERNET CONNECTION TYPE

Enter the static IP address information provided by your Internet Service Provider (ISP).

IP Address : (assigned by your ISP)
Subnet Mask :
ISP Gateway Address :
MAC Address : - - - - (optional)

Primary DNS Address :
Secondary DNS Address : (optional)
MTU :

Helpful Hints..

- Internet Connection:** When configuring the router to access the Internet, be sure to choose the correct **Internet Connection Type** from the drop down menu. If you are unsure of which option to choose, please contact your **Internet Service Provider (ISP)**.
- Support:** If you are having trouble accessing the Internet through the router, double check any settings you have entered on this page and verify them with your ISP if needed.

More...

Internet 100%

D-LINK SYSTEMS, INC | WIRELESS ROUTER | HOME - Windows Internet Explorer

http://192.168.0.1/bsc_wan.php

Product Page : DIR-685 Hardware Version : A1 Firmware Version : 1.00

D-Link

DIR-685 // SETUP ADVANCED STORAGE TOOLS STATUS SUPPORT

Internet Setup
Wireless Setup
Network Setup
LCD Setup

INTERNET CONNECTION

Use this section to configure your Internet Connection method. There are several connection methods to choose from: Static IP, DHCP, PPPoE, PPTP, L2TP, Russian PPTP(Dual Access), Russian PPPoE(Dual Access) and 3G. If you are unsure of your connection method, please contact your Internet Service Provider.

Note: If using the PPPoE option, you will need to remove or disable any PPPoE client software on your computers.

Save Settings Don't Save Settings

ACCESS POINT MODE

Use this to disable NAT on the router and turn it into an Access Point.

Enable Access Point Mode

INTERNET CONNECTION TYPE

Choose the mode to be used by the router to connect to the Internet.

My Internet Connection is : Dynamic IP (DHCP)

DYNAMIC IP (DHCP) INTERNET CONNECTION TYPE

Use this Internet connection type if your Internet Service Provider (ISP) didn't provide you with IP Address information and/or a username and password.

Host Name : DIR-685

MAC Address : 00 - 15 - C5 - 7A - EA - A4 (optional)
Clone MAC Address

Primary DNS Address :
Secondary DNS Address : (optional)
MTU : 1500

Save Settings Don't Save Settings

Helpful Hints..

- Internet Connection:** When configuring the router to access the Internet, be sure to choose the correct **Internet Connection Type** from the drop down menu. If you are unsure of which option to choose, please contact your **Internet Service Provider (ISP)**.
- Support:** If you are having trouble accessing the Internet through the router, double check any settings you have entered on this page and verify them with your ISP if needed.

More...

Internet 100%

D-LINK SYSTEMS, INC | WIRELESS ROUTER | HOME - Windows Internet Explorer

http://192.168.0.1/bsc_wan.php

D-LINK SYSTEMS, INC | WIRELESS ROUTER | HOME

Internet Setup
Wireless Setup
Network Setup
LCD Setup

INTERNET CONNECTION

Use this section to configure your Internet Connection method. There are several connection methods to choose from: Static IP, DHCP, PPPoE, PPTP, L2TP, Russian PPTP(Dual Access), Russian PPPoE(Dual Access) and 3G. If you are unsure of your connection method, please contact your Internet Service Provider.

Note: If using the PPPoE option, you will need to remove or disable any PPPoE client software on your computers.

Save Settings Don't Save Settings

ACCESS POINT MODE

Use this to disable NAT on the router and turn it into an Access Point.

Enable Access Point Mode

INTERNET CONNECTION TYPE

Choose the mode to be used by the router to connect to the Internet.

My Internet Connection is :

PPPOE

Enter the information provided by your Internet Service Provider (ISP).

Dynamic PPPoE Static PPPoE

User Name :

Password :

Confirm Password :

Service Name : (optional)

IP Address :

MAC Address : - - - - - (optional)

Receive DNS from ISP Enter DNS Manually

Primary DNS Address :

Secondary DNS Address : (optional)

Maximum Idle Time : Minutes

MTU :

Connect mode select : Always Manual Connect-on demand

Helpful Hints..

- Internet Connection:** When configuring the router to access the Internet, be sure to choose the correct **Internet Connection Type** from the drop down menu. If you are unsure of which option to choose, please contact your **Internet Service Provider (ISP)**.
- Support:** If you are having trouble accessing the Internet through the router, double check any settings you have entered on this page and verify them with your ISP if needed.

More...

Internet 100%

D-LINK SYSTEMS, INC | WIRELESS ROUTER | HOME - Windows Internet Explorer

http://192.168.0.1/bsc_wan.php

D-LINK SYSTEMS, INC | WIRELESS ROUTER | HOME

Internet Setup
Wireless Setup
Network Setup
LCD Setup

INTERNET CONNECTION

Use this section to configure your Internet Connection method. There are several connection methods to choose from: Static IP, DHCP, PPPoE, PPTP, L2TP, Russian PPTP(Dual Access), Russian PPPoE(Dual Access) and 3G. If you are unsure of your connection method, please contact your Internet Service Provider.

Note: If using the PPPoE option, you will need to remove or disable any PPPoE client software on your computers.

Save Settings Don't Save Settings

ACCESS POINT MODE

Use this to disable NAT on the router and turn it into an Access Point.

Enable Access Point Mode

INTERNET CONNECTION TYPE

Choose the mode to be used by the router to connect to the Internet.

My Internet Connection is : 3G USB Adapter

WWAN INTERNET CONNECTION TYPE :

Enter the information provided by your Internet Service Provider (ISP).

Country : Australia

ISP : choose your isp

User Name : choose your isp (optional)
Telstra

Password : Optus (optional)
Bigpond

Dial Number : Hutchison 3G
Vodafone

Authentication Protocol : Auto (PAP + CHAP)

APN : (optional)

Reconnect Mode : Always-on Manual Connect-on demand

Maximum Idle Time : 2 (minutes, 0=infinite)

MTU : 1492 (bytes)(128-1492)

Save Settings Don't Save Settings

Helpful Hints..

- Internet Connection:** When configuring the router to access the Internet, be sure to choose the correct **Internet Connection Type** from the drop down menu. If you are unsure of which option to choose, please contact your **Internet Service Provider (ISP)**.
- Support:** If you are having trouble accessing the Internet through the router, double check any settings you have entered on this page and verify them with your ISP if needed.

More...

Internet 100%

D-LINK SYSTEMS, INC | WIRELESS ROUTER | HOME - Windows Internet Explorer

http://192.168.0.1/bsc_wlan_main.php

Product Page : DIR-685 Hardware Version : A1 Firmware Version : 1.00

D-Link

DIR-685	SETUP	ADVANCED	STORAGE	TOOLS	STATUS	SUPPORT
----------------	--------------	-----------------	----------------	--------------	---------------	----------------

Internet Setup
Wireless Setup
Network Setup
LCD Setup

WIRELESS SETUP

There are 2 ways to setup your wireless connection. You can use the Wireless Connection Setup wizard or you can manually configure the connection.

Please note that changes made in this section will also need to be duplicated on your wireless clients and PCs.

WIRELESS CONNECTION SETUP WIZARD

If you would like to utilize our easy to use Web-based Wizard to assist you in connecting your new D-Link Systems Wireless Router to the Internet, click on the button below.

Note: Before launching the wizard, please make sure you have followed all steps outlined in the Quick Installation Guide included in the package.

MANUAL WIRELESS CONNECTION OPTIONS

If you would like to configure the Internet settings of your new D-Link Router manually, then click on the button below.

Helpful Hints..

- If you are new to wireless networking and have never configured a wireless router before, click on **Wireless Connection Setup Wizard** and the router will guide you through a few simple steps to get your wireless network up and running.
- If you consider yourself an advanced user and have configured a wireless router before, click **Manual Wireless Connection Setup** to input all the settings manually.

[More...](#)

Internet 100%

WIRELESS CONNECTION SETUP WIZARD:

The screenshot shows a web browser window titled "D-LINK SYSTEMS, INC | WIRELESS ROUTER | HOME - Windows Internet Explorer". The address bar contains "http://192.168.0.1/wiz_wlan.php". The page header includes "Product Page : DIR-685" and "Hardware Version : A1 Firmware Version : 1.00". The D-Link logo is prominently displayed. The main content area is titled "WELCOME TO THE D-LINK WIRELESS SECURITY SETUP WIZARD" and contains the following text:

This wizard will guide you through a step-by-step process to setup your wireless network and make it secure.

- Step 1: Set your Wireless Network.
- Step 2: Set your Wireless Security Password

At the bottom of the wizard box are "Next" and "Cancel" buttons. Below the wizard box is a "WIRELESS" section header and a copyright notice: "Copyright © 2004-2007 D-Link Systems, Inc." The browser status bar at the bottom shows "Done", "Internet", and "100%".

D-LINK SYSTEMS, INC | WIRELESS ROUTER | HOME - Windows Internet Explorer

http://192.168.0.1/wiz_wlan.php

Product Page : DIR-685 Hardware Version : A1 Firmware Version : 1.00

D-Link

STEP 1: SETUP YOUR WIRELESS NETWORK

Give your network a name, using up to 32 characters.

Wireless Network Name (SSID)

Automatically assign a network key (Recommended)
To prevent intruders from accessing your network, the router will automatically assign a security key (also called WEP or WPA key) to your network.

Manually assign a network key
Use this option if you prefer to create your own key.

Use WPA encryption instead of WEP (WPA is stronger than WEP and all D-LINK wireless client adapters support WPA)

WIRELESS


Copyright © 2004-2007 D-Link Systems, Inc.

Done Internet 100%

D-LINK SYSTEMS, INC | WIRELESS ROUTER | HOME - Windows Internet Explorer

http://192.168.0.1/wiz_wlan.php

Product Page : DIR-685 Hardware Version : A1 Firmware Version : 1.00



SETUP COMPLETE!

Below is a detailed summary of your wireless security settings. Please print this page out, or write down the information on a piece of paper, so you can configure the correct settings on your wireless client adapters.

Wireless Network Name (SSID) : clntdir685
Security Mode : Auto (WPA or WPA2) - Personal
Cipher Type : TKIP or AES
Network Key : 6TroOwP7eF

Note: In some smart wireless utilities (e.g. D-LINK wireless utility or wireless zero configuration), you only need to select a Wireless Network Name and enter a Network Key to access the Internet.

WIRELESS

Copyright © 2004-2007 D-Link Systems, Inc.

Internet 100%

D-LINK SYSTEMS, INC | WIRELESS ROUTER | HOME - Windows Internet Explorer

http://192.168.0.1/wiz_wlan.php?TARGET_PAGE=1_ssid

Product Page : DIR-685 Hardware Version : A1 Firmware Version : 1.00

D-Link

STEP 1: SETUP YOUR WIRELESS NETWORK

Give your network a name, using up to 32 characters.

Wireless Network Name (SSID)

Automatically assign a network key (Recommended)
To prevent intruders from accessing your network, the router will automatically assign a security key (also called WEP or WPA key) to your network.

Manually assign a network key
Use this option if you prefer to create your own key.

Use WPA encryption instead of WEP (WPA is stronger than WEP and all D-LINK wireless client adapters support WPA)

WIRELESS


Copyright © 2004-2007 D-Link Systems, Inc.

Done Internet 100%

D-LINK SYSTEMS, INC | WIRELESS ROUTER | HOME - Windows Internet Explorer

http://192.168.0.1/wiz_wlan.php

Product Page : DIR-685 Hardware Version : A1 Firmware Version : 1.00



STEP 2: SET YOUR WIRELESS SECURITY PASSWORD

You have selected your wireless security level - you will need to set a wireless security password.
The WPA (Wi-Fi Protected Access) key must meet one of following guidelines:

- Between 8 to 63 characters (A longer WPA key is more secure than a short one)
- Exactly 64 characters using 0-9 and A-F

Network Key :

Note: You will need to enter the same password that you created in this step into your wireless clients in order to enable proper wireless communication.

[Prev](#) [Next](#) [Cancel](#)

WIRELESS


Copyright © 2004-2007 D-Link Systems, Inc.

Done Internet 100%

D-LINK SYSTEMS, INC | WIRELESS ROUTER | HOME - Windows Internet Explorer

http://192.168.0.1/wiz_wlan.php

Product Page : DIR-685 Hardware Version : A1 Firmware Version : 1.00



SETUP COMPLETE!

Below is a detailed summary of your wireless security settings. Please print this page out, or write down the information on a piece of paper, so you can configure the correct settings on your wireless client adapters.

Wireless Network Name (SSID) : clntdir685
Security Mode : Auto (WPA or WPA2) - Personal
Cipher Type : TKIP or AES
Network Key : testing685

Note: In some smart wireless utilities (e.g. D-LINK wireless utility or wireless zero configuration), you only need to select a Wireless Network Name and enter a Network Key to access the Internet.

WIRELESS

Copyright © 2004-2007 D-Link Systems, Inc.

Done Internet 100%

MANUAL WIRELESS CONNECTION SETUP:

Product Page : DIR-685 Hardware Version : A1 Firmware Version : 1.00

D-Link

DIR-685 // **SETUP** **ADVANCED** **STORAGE** **TOOLS** **STATUS** **SUPPORT**

Internet Setup
Wireless Setup
Network Setup
LCD Setup

WIRELESS NETWORK

Use this section to configure the wireless settings for your D-Link router. Please note that changes made in this section may also need to be duplicated on your wireless client.

To protect your privacy you can configure wireless security features. This device supports three wireless security modes including: WEP, WPA and WPA2.

WI-FI PROTECTED SETUP (ALSO CALLED WCN 2.0 IN WINDOWS VISTA)

Enable :

Current PIN : **53652423**

Wi-Fi Protected Status : Enabled / Not Configured

WIRELESS NETWORK SETTINGS

Enable Wireless : Always

Wireless Network Name : (Also called the SSID)

802.11 Mode :

Enable Auto Channel Selection :

Wireless Channel :

Transmission Rate : (Mbit/s)

Channel Width :

Short Guard Interval :

WMM Enable : (Wireless QoS)

Enable Hidden Wireless : (Also called "Disable SSID Broadcast")

WIRELESS SECURITY MODE

Security Mode :

Helpful Hints..

- Wi-Fi Protected Setup provides a more intuitive way of setting up wireless security between the router and the wireless client. Make sure the wireless card supports this feature or uses a certified Windows Vista driver in order to take advantage of this feature.
- Changing your Wireless Network Name is the first step in securing your wireless network. We recommend that you change it to a familiar name that does not contain any personal information.
- Enabling Hidden Mode is another way to secure your network. With this option enabled, no wireless clients will be able to see your wireless network when they perform a scan to see what's available. In order for your wireless devices to connect to your router, you will need to manually enter the Wireless Network Name on each device.
- If you have enabled Wireless Security, make sure you write down the WEP Key or Passphrase that you have configured. You will need to enter this information on any wireless device that you connect to your wireless network.

[More...](#)

Done Internet 100%

D-LINK SYSTEMS, INC | WIRELESS ROUTER | HOME - Windows Internet Explorer

http://192.168.0.1/bsc_wlan.php

Enable :

Current PIN : 53652423

Generate New PIN Reset PIN to Default

Wi-Fi Protected Status : Enabled / Not Configured

Reset to Unconfigured

Add Wireless Device with WPS

WIRELESS NETWORK SETTINGS

Enable Wireless : Always

Wireless Network Name : dindir685 (Also called the SSID)

802.11 Mode : 802.11 Mixed(b/g/n)

Enable Auto Channel Selection :

Wireless Channel : 6

Transmission Rate : Best (automatic) (Mbit/s)

Channel Width : 20 MHz

Short Guard Interval :

WMM Enable : (Wireless QoS)

Enable Hidden Wireless : (Also called "Disable SSID Broadcast")

WIRELESS SECURITY MODE

Security Mode : Enable WEP Wireless Security (basic)

WEP

WEP is the wireless encryption standard. To use it you must enter the same key(s) into the router and the wireless stations. For 64-bit keys you must enter 10 hex digits into each key box. For 128-bit keys you must enter 26 hex digits into each key box. A hex digit is either a number from 0 to 9 or a letter from A to F. For the most secure use of WEP set the authentication type to "Shared Key" when WEP is enabled.

You may also enter any text string into a WEP key box, in which case it will be converted into a hexadecimal key using the ASCII values of the characters. A maximum of 5 text characters can be entered for 64-bit keys, and a maximum of 13 characters for 128-bit keys.

Authentication : Open

WEP Encryption : 64Bit

Default WEP Key : WEP Key 1

WEP Key : (5 ASCII or 10 HEX)

Save Settings Don't Save Settings

- Changing your Wireless Network Name is the first step in securing your wireless network. We recommend that you change it to a familiar name that does not contain any personal information.
- Enabling Hidden Mode is another way to secure your network. With this option enabled, no wireless clients will be able to see your wireless network when they perform a scan to see what's available. In order for your wireless devices to connect to your router, you will need to manually enter the Wireless Network Name on each device.
- If you have enabled Wireless Security, make sure you write down the WEP Key or Passphrase that you have configured. You will need to enter this information on any wireless device that you connect to your wireless network.

More...

Internet 100%

D-LINK SYSTEMS, INC | WIRELESS ROUTER | HOME - Windows Internet Explorer

http://192.168.0.1/bsc_wlan.php

Wireless security modes including: WEP, WPA and WPA2.

Save Settings Don't Save Settings

WI-FI PROTECTED SETUP (ALSO CALLED WCN 2.0 IN WINDOWS VISTA)

Enable :

Current PIN : **53652423**

Generate New PIN Reset PIN to Default

Wi-Fi Protected Status : Enabled / Not Configured

Reset to Unconfigured

Add Wireless Device with WPS

WIRELESS NETWORK SETTINGS

Enable Wireless : Always

Wireless Network Name : dintdir685 (Also called the SSID)

802.11 Mode : 802.11 Mixed(b/g/n)

Enable Auto Channel Selection :

Wireless Channel : 6

Transmission Rate : Best (automatic) (Mbit/s)

Channel Width : 20 MHz

Short Guard Interval :

WMM Enable : (Wireless QoS)

Enable Hidden Wireless : (Also called "Disable SSID Broadcast")

WIRELESS SECURITY MODE

Security Mode : Enable WPA Only Wireless Security (enhanced)

Disable Wireless Security (not recommended)

Enable WEP Wireless Security (basic)

Enable WPA Only Wireless Security (enhanced)

Enable WPA2 Only Wireless Security (enhanced)

Enable WPA/WPA2 Wireless Security (enhanced)

WPA ONLY

WPA Only requires stations to use high grade encryption and authentication.

Cipher Type : Both

PSK / EAP : PSK

Network Key : testing685
(8~63 ASCII or 64 HEX)

Save Settings Don't Save Settings

wireless card supports this feature or uses a certified Windows Vista driver in order to take advantage of this feature.

- Changing your Wireless Network Name is the first step in securing your wireless network. We recommend that you change it to a familiar name that does not contain any personal information.
- Enabling Hidden Mode is another way to secure your network. With this option enabled, no wireless clients will be able to see your wireless network when they perform a scan to see what's available. In order for your wireless devices to connect to your router, you will need to manually enter the Wireless Network Name on each device.
- If you have enabled Wireless Security, make sure you write down the WEP Key or Passphrase that you have configured. You will need to enter this information on any wireless device that you connect to your wireless network.

More...

WIRELESS

Internet 100%

D-LINK SYSTEMS, INC | WIRELESS ROUTER | HOME - Windows Internet Explorer

http://192.168.0.1/bsc_lan.php

D-LINK SYSTEMS, INC | WIRELESS ROUTER | HOME

Internet Setup
Wireless Setup
Network Setup
LCD Setup

NETWORK SETTING

Use this section to configure the internal network settings of your router and also to configure the built-in DHCP server to assign IP addresses to computers on your network. The IP address that is configured here is the IP address that you use to access the Web-based management interface. If you change the IP address in this section, you may need to adjust your PC's network settings to access the network again.

Please note that this section is optional and you do not need to change any of the settings here to get your network up and running.

Save Settings Don't Save Settings

ROUTER SETTINGS

Use this section to configure the internal network settings of your router. The IP address that is configured here is the IP address that you use to access the Web-based management interface. If you change the IP address here, you may need to adjust your PC's network settings to access the network again.

Router IP Address :

Default Subnet Mask :

Local Domain Name :

Enable DNS Relay :

DHCP SERVER SETTINGS

Use this section to configure the built-in DHCP server to assign IP address to the computers on your network.

Enable DHCP Server :

DHCP IP Address Range : to (addresses within the LAN subnet)

DHCP Lease Time : (minutes)

DHCP CLIENT LIST

Host Name	IP Address	MAC Address	Expired Time
pc4	192.168.0.102	00:05:5D:D0:C5:05	22 hr(s) 11 min(s) 30 sec(s)
hercules	192.168.0.100	00:15:C5:7A:EA:A4	22 hr(s) 10 min(s) 30 sec(s)

25 - DHCP RESERVATION

Remaining number of clients that can be configured : 25

	Computer Name	IP Address	MAC Address	
<input type="checkbox"/>	<input type="text"/>	<input type="text"/>	<input type="text"/>	<< Computer Name
<input type="checkbox"/>	<input type="text"/>	<input type="text"/>	<input type="text"/>	<< Computer Name

Helpful Hints..

- If you already have a DHCP server on your network or are using static IP addresses on all the devices on your network, uncheck **Enable DHCP Server** to disable this feature.

More...

Done Internet 100%

D-LINK SYSTEMS, INC | WIRELESS ROUTER | HOME - Windows Internet Explorer

http://192.168.0.1/nas_lcd_setup.php

Product Page : DIR-685 Hardware Version : A1 Firmware Version : 1.00

D-Link

DIR-685 // **SETUP** ADVANCED STORAGE TOOLS STATUS SUPPORT

Internet Setup
Wireless Setup
Network Setup
LCD Setup

LCD SETUP

Use this section to configure the LCD settings of your router.

SCREEN SAVER SETTING

Timeout : (minute)

DISPLAY SETTING

Put the display to sleep when it is inactive.

Timeout : (minute)

Helpful Hints..

- The LCD Setup page controls the settings of the display panel on your DIR-685 device. This page allows you to control the screen saver and adjust the amount of time the device needs to be idle before the LCD Screen turns off.

[More...](#)

Internet 100%

D-LINK SYSTEMS, INC | WIRELESS ROUTER | HOME - Windows Internet Explorer

http://192.168.0.1/adv_port.php

Product Page : DIR-685 Hardware Version : A1 Firmware Version : 1.00

D-Link

DIR-685 // SETUP ADVANCED STORAGE TOOLS STATUS SUPPORT

Port Forwarding Application Rules QoS Engine Network Filter Website Filter Firewall Settings Routing Advanced Wireless Advanced Network Guest Zone Wake on LAN

PORT FORWARDING RULES

The Port Forwarding option allows you to define a single public port on your router for redirection to an internal LAN IP Address and Private LAN port if required. This feature is useful for hosting online services such as FTP or Web Servers.

Save Settings Don't Save Settings

25 - ADVANCED PORT FORWARDING RULES

Remaining number of rules that can be created: 25

			Port	Traffic Type
<input type="checkbox"/>	Name [] << Application Name	IP Address [] << Computer Name	Public Port [] ~ [] Private Port [] ~ []	Any
<input type="checkbox"/>	Name [] << Application Name	IP Address [] << Computer Name	Public Port [] ~ [] Private Port [] ~ []	Any
<input type="checkbox"/>	Name [] << Application Name	IP Address [] << Computer Name	Public Port [] ~ [] Private Port [] ~ []	Any
<input type="checkbox"/>	Name [] << Application Name	IP Address [] << Computer Name	Public Port [] ~ [] Private Port [] ~ []	Any
<input type="checkbox"/>	Name [] << Application Name	IP Address [] << Computer Name	Public Port [] ~ [] Private Port [] ~ []	Any
<input type="checkbox"/>	Name [] << Application Name	IP Address [] << Computer Name	Public Port [] ~ [] Private Port [] ~ []	Any
<input type="checkbox"/>	Name [] << Application Name	IP Address [] << Computer Name	Public Port [] ~ [] Private Port [] ~ []	Any

Helpful Hints..

- Check the **Application Name** drop-down menu for a list of pre-defined applications that you can select from. If you select one of the pre-defined applications, click the arrow button next to the drop-down menu to fill out the appropriate fields.
- You can select your computer from the list of DHCP clients in the **Computer Name** drop-down menu, or enter the IP address manually of the computer you would like to open the specified port to.
- This feature allows you to open a range of ports to a computer on your network. To do so, enter the first port in the range you would like to open on the router in the first box under **Public Port** and last port of the range in the second one. After that you enter the first port in the range that the internal server uses in the first box under **Private Port** and the last port of the range in the second.
- To open a single port using this feature, simply enter the same number in both boxes.

More...

Internet 100%

D-LINK SYSTEMS, INC | WIRELESS ROUTER | HOME - Windows Internet Explorer

http://192.168.0.1/adv_app.php

Product Page : DIR-685 Hardware Version : A1 Firmware Version : 1.00

D-Link

DIR-685 // SETUP ADVANCED STORAGE TOOLS STATUS SUPPORT

Port Forwarding Application Rules QoS Engine Network Filter Website Filter Firewall Settings Routing Advanced Wireless Advanced Network Guest Zone Wake on LAN

APPLICATION RULES

The Application Rules option is used to open single or multiple ports in your firewall when the router senses data sent to the Internet on an outgoing "Trigger" port or port range. Special Application rules apply to all computers on your internal network.

Save Settings Don't Save Settings

25 - APPLICATION RULES

Remaining number of rules that can be created: 25

			Port	Traffic Type
<input type="checkbox"/>	<input type="text"/>	<< Application Name	Trigger <input type="text"/>	Any
			Firewall <input type="text"/>	Any
<input type="checkbox"/>	<input type="text"/>	<< Application Name	Trigger <input type="text"/>	Any
			Firewall <input type="text"/>	Any
<input type="checkbox"/>	<input type="text"/>	<< Application Name	Trigger <input type="text"/>	Any
			Firewall <input type="text"/>	Any
<input type="checkbox"/>	<input type="text"/>	<< Application Name	Trigger <input type="text"/>	Any
			Firewall <input type="text"/>	Any
<input type="checkbox"/>	<input type="text"/>	<< Application Name	Trigger <input type="text"/>	Any
			Firewall <input type="text"/>	Any

Helpful Hints..

- Use the Application Name drop-down menu to view a list of pre-defined applications that you can select from. If you select one of the pre-defined applications, click the arrow button next to the drop-down menu to fill out the appropriate fields.

More...

Done Internet 100%

D-LINK SYSTEMS, INC | WIRELESS ROUTER | HOME - Windows Internet Explorer

http://192.168.0.1/adv_qos.php

Product Page : DIR-685 Hardware Version : A1 Firmware Version : 1.00

D-Link

DIR-685 // SETUP ADVANCED STORAGE TOOLS STATUS SUPPORT

Port Forwarding
Application Rules
QoS Engine
Network Filter
Website Filter
Firewall Settings
Routing
Advanced Wireless
Advanced Network
Guest Zone
Wake on LAN

QOS (QUALITY OF SERVICE) ENGINE

Use this section to configure D-Link's Smart QoS. Smart QoS improves VoIP voice quality or streaming by ensuring that your VoIP or streaming traffic is prioritized over other network traffic, such as FTP or Web. For optimum performance, please tick the "lag eliminated" option to automatically set the priority for your applications.

BANDWIDTH

Uplink Speed : 1 Mbps
Downlink Speed : 64 Kbps
128 Kbps
256 Kbps
512 Kbps
1 Mbps
2 Mbps
4 Mbps
8 Mbps
16 Mbps
32 Mbps
FULL

Please contact your Internet Service Provider to check your xDSL or cable uplink bandwidth. An accurate uplink bandwidth setting is required for the QoS engine to operate smoothly and efficiently.

QOS

Lag eliminated (VoIP, Streaming)

Helpful Hints.

- The Smart QoS feature helps improve your network VoIP and streaming performance by prioritizing the data flows of network applications.

More...

Internet 100%

D-LINK SYSTEMS, INC | WIRELESS ROUTER | HOME - Windows Internet Explorer

http://192.168.0.1/adv_mac_filter.php

Product Page : DIR-685 Hardware Version : A1 Firmware Version : 1.00

D-Link

DIR-685 // SETUP ADVANCED STORAGE TOOLS STATUS SUPPORT

Port Forwarding Application Rules QoS Engine Network Filter Website Filter Firewall Settings Routing Advanced Wireless Advanced Network Guest Zone Wake on LAN

MAC FILTERING

The MAC (Media Access Controller) Address filter option is used to control network access based on the MAC Address of the network adapter. A MAC address is a unique ID assigned by the manufacturer of the network adapter. This feature can be configured to ALLOW or DENY network/Internet access.

Save Settings Don't Save Settings

25 - MAC FILTERING RULES

Configure MAC Filtering below:

Turn MAC Filtering OFF

Remaining number of rules that can be created: 25

	MAC Address		DHCP Client List	Schedule	
<input type="checkbox"/>	<input type="text"/>	<<	Computer Name	Always	New Schedule
<input type="checkbox"/>	<input type="text"/>	<<	Computer Name	Always	New Schedule
<input type="checkbox"/>	<input type="text"/>	<<	Computer Name	Always	New Schedule
<input type="checkbox"/>	<input type="text"/>	<<	Computer Name	Always	New Schedule
<input type="checkbox"/>	<input type="text"/>	<<	Computer Name	Always	New Schedule
<input type="checkbox"/>	<input type="text"/>	<<	Computer Name	Always	New Schedule
<input type="checkbox"/>	<input type="text"/>	<<	Computer Name	Always	New Schedule
<input type="checkbox"/>	<input type="text"/>	<<	Computer Name	Always	New Schedule
<input type="checkbox"/>	<input type="text"/>	<<	Computer Name	Always	New Schedule
<input type="checkbox"/>	<input type="text"/>	<<	Computer Name	Always	New Schedule
<input type="checkbox"/>	<input type="text"/>	<<	Computer Name	Always	New Schedule
<input type="checkbox"/>	<input type="text"/>	<<	Computer Name	Always	New Schedule
<input type="checkbox"/>	<input type="text"/>	<<	Computer Name	Always	New Schedule
<input type="checkbox"/>	<input type="text"/>	<<	Computer Name	Always	New Schedule
<input type="checkbox"/>	<input type="text"/>	<<	Computer Name	Always	New Schedule
<input type="checkbox"/>	<input type="text"/>	<<	Computer Name	Always	New Schedule

Helpful Hints..

- Create a list of MAC addresses and choose whether to allow or deny them access to your network.
- Computers that have obtained an IP address from the router's DHCP server will be in the DHCP Client List. Select a device from the drop down menu and click the arrow to add that device's MAC to the list.
- Use the check box on the left to either enable or disable a particular entry.
- Use the **Always** drop down menu if you have previously defined a schedule in the router. If not, click on the **Add New** button to add one.

More...

Done Internet 100%

D-LINK SYSTEMS, INC | WIRELESS ROUTER | HOME - Windows Internet Explorer

http://192.168.0.1/adv_mac_filter.php

Product Page : DIR-685 Hardware Version : A1 Firmware Version : 1.00

D-Link

DIR-685 // SETUP ADVANCED STORAGE TOOLS STATUS SUPPORT

Port Forwarding
Application Rules
QoS Engine
Network Filter
Website Filter
Firewall Settings
Routing
Advanced Wireless
Advanced Network
Guest Zone
Wake on LAN

MAC FILTERING

The MAC (Media Access Controller) Address filter option is used to control network access based on the MAC Address of the network adapter. A MAC address is a unique ID assigned by the manufacturer of the network adapter. This feature can be configured to ALLOW or DENY network/Internet access.

Save Settings Don't Save Settings

25 - MAC FILTERING RULES

Configure MAC Filtering below:

Turn MAC Filtering OFF
Turn MAC Filtering ON and ALLOW computers listed to access the network
Turn MAC Filtering ON and DENY computers listed to access the network

	MAC Address		DHCP Client List	Schedule	
<input type="checkbox"/>	<input type="text"/>	<<	Computer Name	Always	New Schedule
<input type="checkbox"/>	<input type="text"/>	<<	Computer Name	Always	New Schedule
<input type="checkbox"/>	<input type="text"/>	<<	Computer Name	Always	New Schedule
<input type="checkbox"/>	<input type="text"/>	<<	Computer Name	Always	New Schedule
<input type="checkbox"/>	<input type="text"/>	<<	Computer Name	Always	New Schedule
<input type="checkbox"/>	<input type="text"/>	<<	Computer Name	Always	New Schedule
<input type="checkbox"/>	<input type="text"/>	<<	Computer Name	Always	New Schedule
<input type="checkbox"/>	<input type="text"/>	<<	Computer Name	Always	New Schedule
<input type="checkbox"/>	<input type="text"/>	<<	Computer Name	Always	New Schedule
<input type="checkbox"/>	<input type="text"/>	<<	Computer Name	Always	New Schedule
<input type="checkbox"/>	<input type="text"/>	<<	Computer Name	Always	New Schedule
<input type="checkbox"/>	<input type="text"/>	<<	Computer Name	Always	New Schedule
<input type="checkbox"/>	<input type="text"/>	<<	Computer Name	Always	New Schedule
<input type="checkbox"/>	<input type="text"/>	<<	Computer Name	Always	New Schedule
<input type="checkbox"/>	<input type="text"/>	<<	Computer Name	Always	New Schedule

Helpful Hints..

- Create a list of MAC addresses and choose whether to allow or deny them access to your network.
- Computers that have obtained an IP address from the router's DHCP server will be in the DHCP Client List. Select a device from the drop down menu and click the arrow to add that device's MAC to the list.
- Use the check box on the left to either enable or disable a particular entry.
- Use the **Always** drop down menu if you have previously defined a schedule in the router. If not, click on the **Add New** button to add one.

More...

Done Internet 100%

Product Page : DIR-685 Hardware Version : A1 Firmware Version : 1.00

D-Link

DIR-685 // SETUP ADVANCED STORAGE TOOLS STATUS SUPPORT

Port Forwarding Application Rules QoS Engine Network Filter Website Filter Firewall Settings Routing Advanced Wireless Advanced Network Guest Zone Wake on LAN

FIREWALL SETTINGS

Firewall rules can be used to allow or deny traffic passing through the router. You can specify a single port by utilizing the input box at the top or a range of ports by utilizing both input boxes.

DMZ means "Demilitarized Zone". DMZ allows computers behind the router firewall to be accessible to Internet traffic. Typically, your DMZ would contain Web servers, FTP servers and others.

Save Settings Don't Save Settings

FIREWALL SETTING

Enable SPI :

DMZ HOST

The DMZ(Demilitarized Zone) option allows you to set up a single computer on your network to be outside of the router. If you have a computer that cannot run Internet applications successfully from behind the router, then place the computer into the DMZ for unrestricted Internet access.

Note: Putting a computer in the DMZ may expose that computer to a variety of security risks. Use of this option is only recommended as a last resort.

Enable DMZ Host :

DMZ IP Address : << Computer Name

50 - FIREWALL RULES

Remaining number of rules that can be created: 50

	Interface	IP Address	Protocol	Schedule
<input type="checkbox"/>	Name <input type="text"/> Source	<input type="text"/> <input type="text"/>	Protocol TCP	Always New Schedule
	Action Allow Dest	<input type="text"/> <input type="text"/>	Port Range <input type="text"/> <input type="text"/>	
	Name <input type="text"/> Source	<input type="text"/> <input type="text"/>	Protocol TCP	Always

Done Internet 100%

D-LINK SYSTEMS, INC | WIRELESS ROUTER | HOME - Windows Internet Explorer

http://192.168.0.1/adv_wlan.php

Product Page : DIR-685 Hardware Version : A1 Firmware Version : 1.00

D-Link

DIR-685 // SETUP ADVANCED STORAGE TOOLS STATUS SUPPORT

Port Forwarding
Application Rules
QoS Engine
Network Filter
Website Filter
Firewall Settings
Routing
Advanced Wireless
Advanced Network
Guest Zone
Wake on LAN

ADVANCED WIRELESS SETTINGS

These options are for users that wish to change the behavior of their 802.11n wireless radio from the standard settings. We do not recommend changing these settings from the factory defaults. Incorrect settings may impact the performance of your wireless radio. The default settings should provide the best wireless radio performance in most environments.

ADVANCED WIRELESS SETTINGS

Transmit Power : 100%
Beacon interval : 100 (msec, range:20~1000, default:100)
RTS Threshold : 2346 (range: 256~2346, default:2346)
Fragmentation : 2346 (range: 1500~2346, default:2346, even number only)
DTIM interval : 1 (range: 1~255, default:1)
Preamble Type : Short Preamble Long Preamble
CTS Mode : None Always Auto

Helpful Hints..

- It is recommended that you leave these parameters with their default values. Adjusting them could limit the performance of your wireless network.

[More...](#)

Internet 100%

D-LINK SYSTEMS, INC | WIRELESS ROUTER | HOME - Windows Internet Explorer

http://192.168.0.1/adv_network.php

Product Page : DIR-685 Hardware Version : A1 Firmware Version : 1.00

D-Link

DIR-685 // SETUP **ADVANCED** STORAGE TOOLS STATUS SUPPORT

Port Forwarding
Application Rules
QoS Engine
Network Filter
Website Filter
Firewall Settings
Routing
Advanced Wireless
Advanced Network
Guest Zone
Wake on LAN

ADVANCED NETWORK SETTINGS

If you are not familiar with these Advanced Network Settings, please read the help section before attempting to modify these settings.

UPnP

Universal Plug and Play (UPnP) supports peer-to-peer Plug and Play functionality for network devices.

Enable UPnP :

WAN PING

If you enable this feature, the WAN port of your router will respond to ping requests from the Internet that are sent to the WAN IP Address.

Enable WAN Ping Respose :

WAN PORT SPEED

10/100/1000Mbps Auto

MULTICAST STREAMS

Enable Multicast Streams :
Wireless Enhance Mode :

Helpful Hints..

- For added security, it is recommended that you disable the **WAN Ping Respond** option. Ping is often used by malicious Internet users to locate active networks or PCs.

[More...](#)

Internet 100%

D-LINK SYSTEMS, INC | WIRELESS ROUTER | HOME - Windows Internet Explorer

http://192.168.0.1/adv_gzone.php

Product Page : DIR-685 Hardware Version : A1 Firmware Version : 1.00

D-Link

DIR-685 // SETUP ADVANCED STORAGE TOOLS STATUS SUPPORT

Port Forwarding
Application Rules
QoS Engine
Network Filter
Website Filter
Firewall Settings
Routing
Advanced Wireless
Advanced Network
Guest Zone
Wake on LAN

GUEST ZONE

Use this section to configure the guest zone settings of your router. The guest zone provides a separate network zone for guests to access the Internet.

Save Settings Don't Save Settings

GUEST ZONE SELECTION

Enable Guest Zone : Always

Wireless Network Name : (Also called the SSID)

Security Mode :

ROUTER SETTING FOR THE GUEST ZONE

Use this section to configure the guest zone settings of your router. The guest zone provides a separate network zone for guests to access the Internet.

Router IP Address :

Default Subnet Mask :

GUEST ZONE CLIENT ISOLATION

Enable the function to prevent guest clients accessing other guest clients in the Guest Zone. Guest clients can only access the Internet.

Enable Guest Zone Client Isolation :

ROUTING BETWEEN HOST ZONE AND GUEST ZONE

Use this section to enable routing between the Host Zone and Guest Zone, Guest clients can not access Host clients' data without enabling this function.

Enable Routing Between Zones :

DHCP SERVER SETTINGS FOR GUEST ZONE

Helpful Hints...

- Use this section to configure the guest zone settings of your router. The guest zone provide a separate network zone for guests to access Internet.

More...

Done Internet 100%

D-LINK SYSTEMS, INC | WIRELESS ROUTER | HOME - Windows Internet Explorer

http://192.168.0.1/adv_gzone.php

Default Subnet Mask : 255.255.255.0

GUEST ZONE CLIENT ISOLATION

Enable the function to prevent guest clients accessing other guest clients in the Guest Zone. Guest clients can only access the Internet.

Enable Guest Zone Client Isolation :

ROUTING BETWEEN HOST ZONE AND GUEST ZONE

Use this section to enable routing between the Host Zone and Guest Zone, Guest clients can not access Host clients' data without enabling this function.

Enable Routing Between Zones :

DHCP SERVER SETTINGS FOR GUEST ZONE

Use this section to configure the built-in DHCP server to assign IP addresses to computers on your network.

Enable DHCP Server :

DHCP IP Address Range : 100 to 199 (addresses within the LAN subnet)

DHCP Lease Time : 1440 (minutes)

DHCP CLIENT LIST FOR GUEST ZONE

Host Name	IP Address	MAC Address	Expired Time
-----------	------------	-------------	--------------

LOCKED CLIENT LIST FOR GUEST ZONE

The function is used to lock all PC clients which are in the Guest Zone to an IP/MAC address bundle list; only PCs in this list can access the network after enabling the function. This makes sure that no additional clients can access the Guest Zone regardless of whether they are using a wired or wireless connection.

Enable LOCK CLIENT LIST :

Save Settings Don't Save Settings

WIRELESS

Copyright © 2004-2007 D-Link Systems, Inc.

Internet 100%

D-LINK SYSTEMS, INC | WIRELESS ROUTER | HOME - Windows Internet Explorer

http://192.168.0.1/adv_wol.php

Product Page : DIR-685 Hardware Version : A1 Firmware Version : 1.00

D-Link

DIR-685 // SETUP ADVANCED STORAGE TOOLS STATUS SUPPORT

Port Forwarding
Application Rules
QoS Engine
Network Filter
Website Filter
Firewall Settings
Routing
Advanced Wireless
Advanced Network
Guest Zone
Wake on LAN

WAKE ON LAN SETTINGS

The Wake on LAN option allows you to define the UDP port on your router that will be used to receive Magic Packets from the Internet. The Wake on LAN function allows a computer to be turned on or woken up remotely by a Magic Packet.

WAKE ON LAN

Enable Wake on LAN :

UDP Port :

Helpful Hints..

- The Wake on LAN function can be used to remotely turn on a PC connected to the LAN side of the router. Specify the UDP port that will be used by the Wake on LAN magic packet to prevent the router from thinking the Wake on LAN request is a hostile attack and blocking it.

[More...](#)

Done Internet 100%

D-LINK SYSTEMS, INC | WIRELESS ROUTER | HOME - Windows Internet Explorer

http://192.168.0.1/nas_disk_management.php?uptime=169968

Product Page : DIR-685 Hardware Version : A1 Firmware Version : 1.00

D-Link

DIR-685 // **SETUP** **ADVANCED** **STORAGE** **TOOLS** **STATUS** **SUPPORT**

Disk Management
Users/Groups
Storage Access
FTP Server
UPnP AV Server
iTunes Server
BT Download Manager

DISK MANAGEMENT

Information about the hard disk will be shown here.

HARD DISK DRIVE INFORMATION

Name : ST9160314AS
Format : EXT3
Capacity : 160 GB
Used : 196 MB
Available : 155 GB
Disk Health : Very good
Disk Temperature : 46°C / 114°F

FORMAT SETTING

If you would like to format the hard drive using the third extended file system(EXT3), click on the button below.

HARD DRIVE SETTING

Put the Hard Drive to sleep when it is inactive.

Timeout : (minute)

Helpful Hints..

- The Disk Management page contains information and settings for the local hard drive that is currently installed in the device.

More...

Done Internet 100%

D-LINK SYSTEMS, INC | WIRELESS ROUTER | HOME - Windows Internet Explorer

http://192.168.0.1/nas_user_group.php

D-LINK SYSTEMS, INC | WIRELESS ROUTER | HOME

Disk Management

Users/Groups

Storage Access

FTP Server

UPnP AV Server

iTunes Server

BT Download Manager

USERS / GROUPS

Create users and their passwords. Assign users to groups if desired. Create new groups that users can be assigned to.

USER AND GROUP CREATION

User Group

User Name

Password

Confirm Password

GROUP SETTINGS

Select Group
Please select a group.

List of all users

Users in group

All accounts

USER LIST

No.	User Name	Group Name	: Change Password	: Delete
-----	-----------	------------	-------------------	----------

GROUP LIST

No.	User Name	Group Name
-----	-----------	------------

Helpful Hints..

- User passwords must be at least five characters long. A user name can not be the same as a group name.

More...

Internet 100%

D-LINK SYSTEMS, INC | WIRELESS ROUTER | HOME - Windows Internet Explorer

http://192.168.0.1/nas_nw_access.php

Product Page : DIR-685 Hardware Version : A1 Firmware Version : 1.00

D-Link

DIR-685 // **SETUP** **ADVANCED** **STORAGE** **TOOLS** **STATUS** **SUPPORT**

Disk Management
Users/Groups
Storage Access
FTP Server
UPnP AV Server
iTunes Server
BT Download Manager

STORAGE ACCESS SETTINGS

Assign permissions for users and groups on the local network.

STORAGE ACCESS MODE

Mode

Helpful Hints..

- By default, each hard drive or volume will have an open-access rule. These rules must be deleted before user or group specific rules can be created.

[More...](#)

Internet 100%



- Disk Management
- Users/Groups
- Storage Access
- FTP Server
- UPnP AV Server
- iTunes Server
- BT Download Manager

STORAGE ACCESS SETTINGS

Assign permissions for users and groups on the local network.

STORAGE ACCESS MODE

Mode:

NETWORK ACCESS SETTINGS

Category: User Group

User: All accounts

Allow Guests

Share Name:

Folder:

Permission:

Oplocks:

Map archive:

Comment:

NETWORK ACCESS LISTS

:R/W : Read/Write :Read Only : Modify Setting : Delete

Share Name	Folder	User/Group	Comment	Oplocks	Map	R/W
------------	--------	------------	---------	---------	-----	-----

Helpful Hints..

- By default, each hard drive or volume will have an open-access rule. These rules must be deleted before user or group specific rules can be created.

[More...](#)

D-LINK SYSTEMS, INC | WIRELESS ROUTER | HOME - Windows Internet Explorer

http://192.168.0.1/nas_ftp.php

D-LINK SYSTEMS, INC | WIRELESS ROUTER | HOME

Disk Management
Users/Groups
Storage Access
FTP Server
UPnP AV Server
iTunes Server
BT Download Manager

FTP SERVER SETTINGS

Assign permissions for users and groups that will access the FTP server over the Internet.

Save Settings Don't Save Settings

FTP SERVER SETTINGS

Category User Group

User All accounts

Folder root Browse

Permission

Enable FTP Enable Disable

Mode LAN Internet/WAN LAN + Internet/WAN

Max. User

Idle Time Idle Time

Port (1~65535,Default:21)

Flow Control Unlimited x 10 KBs

Client Language

FTP ACCESS LIST

:R/W : Read/Write :Read Only :Modify Setting :Delete

Path	User/Group	R/W

FTP SERVER STATUS

Status	Stopped
Mode	LAN
Port	21
Max. User	10
Flow Control	Unlimited
Idle Time	5
Client Language	Western European

Helpful Hints..

- If your DIR-685 is connected to a router, you will need to forward port 21 (in the router configuration) to the IP address of the DIR-685. From the outside world, remember to access this FTP server by using the WAN address of your router.

More...

Internet 100%

D-LINK SYSTEMS, INC | WIRELESS ROUTER | HOME - Windows Internet Explorer

http://192.168.0.1/nas_upnp.php

Product Page : DIR-685 Hardware Version : A1 Firmware Version : 1.00

D-Link

DIR-685 // **SETUP** **ADVANCED** **STORAGE** **TOOLS** **STATUS** **SUPPORT**

Disk Management
Users/Groups
Storage Access
FTP Server
UPnP AV Server
iTunes Server
BT Download Manager

UPNP AV SERVER SETTINGS

Sets a path for your media content.

UPNP AV SERVER SETTINGS

UPnP AV Server	<input type="radio"/> Enable <input checked="" type="radio"/> Disable
Folder	<input checked="" type="checkbox"/> root

Helpful Hints..

- After adding new media content to the DIR-685, click the refresh button.

More...

Internet 100%

D-LINK SYSTEMS, INC | WIRELESS ROUTER | HOME - Windows Internet Explorer

http://192.168.0.1/nas_iTunes.php

Product Page : DIR-685 Hardware Version : A1 Firmware Version : 1.00

D-Link

DIR-685 // **SETUP** **ADVANCED** **STORAGE** **TOOLS** **STATUS** **SUPPORT**

- Disk Management
- Users/Groups
- Storage Access
- FTP Server
- UPnP AV Server
- iTunes Server**
- BT Download Manager

ITUNES SERVER SETTINGS

Configure iTunes Server settings for streaming music directly to clients running iTunes software.

ITUNES SERVER SETTINGS

iTunes Server	<input type="radio"/> Enable <input checked="" type="radio"/> Disable
Folder	<input checked="" type="checkbox"/> root
Auto Refresh	none

Helpful Hints..

- iTunes will automatically detect the DIR-685 on the network. It will be listed on the left side of the program, below Library.

[More...](#)

Internet 100%

D-LINK SYSTEMS, INC | WIRELESS ROUTER | HOME - Windows Internet Explorer

http://192.168.0.1/nas_bt.php

Product Page : DIR-685 Hardware Version : A1 Firmware Version : 1.00

D-Link

DIR-685 // **SETUP** **ADVANCED** **STORAGE** **TOOLS** **STATUS** **SUPPORT**

- Disk Management
- Users/Groups
- Storage Access
- FTP Server
- UPnP AV Server
- iTunes Server
- BT Download Manager

BT DOWNLOAD MANAGER

Use this section to configure BT manager.

BT SETTING

Enable BT :

Share Path :

Done Internet 100%

D-LINK SYSTEMS, INC | WIRELESS ROUTER | HOME - Windows Internet Explorer

http://192.168.0.1/tools_admin.php

Product Page : DIR-685 Hardware Version : A1 Firmware Version : 1.00

D-Link

DIR-685 // SETUP ADVANCED STORAGE **TOOLS** STATUS SUPPORT

Admin
Time
Log Settings
Email Settings
System
Firmware
Dynamic DNS
System Check
Schedules

ADMINISTRATOR SETTINGS

There is no password for this router by default. To help secure your network, we recommend that you choose a new password.

ADMINISTRATOR (THE DEFAULT LOGIN NAME IS "Admin")

New Password:

Confirm Password:

ADMINISTRATION

Enable Graphical Authentication:

Enable Remote Management:

IP Permitted to Access:

Port:

Helpful Hints..

- For security reasons, it is recommended that you change the Login Name and Password for the Administrator accounts. Be sure to write down the new Login Names and Passwords to avoid having to reset the router in the event that they are forgotten.
- When enabling Remote Management, you can specify the IP address of the computer on the Internet that you want to have access to your router.
- When IP Permitted to Access is 0.0.0.0 which means any IP address from the Internet can access the router remotely once remote management is enabled.

[More...](#)

Internet 100%

D-LINK SYSTEMS, INC | WIRELESS ROUTER | HOME - Windows Internet Explorer

http://192.168.0.1/tools_time.php

Product Page : DIR-685 Hardware Version : A1 Firmware Version : 1.00

D-Link

DIR-685 // SETUP ADVANCED STORAGE TOOLS STATUS SUPPORT

Admin
Time
Log Settings
Email Settings
System
Firmware
Dynamic DNS
System Check
Schedules

TIME AND DATE

The Time and Date Configuration option allows you to configure, update, and maintain the correct time on the internal system clock. From this section you can set the time zone you are in and set the NTP (Network Time Protocol) Server. Daylight Saving can also be configured to adjust the time when needed

Save Settings Don't Save Settings

TIME AND DATE CONFIGURATION

Time : 07/09/2009 11:53:48
Time Zone : (GMT+10:00) Canberra, Melbourne, Sydney
Enable Daylight Saving : Sync. your computer's time settings

AUTOMATIC TIME AND DATE CONFIGURATION

Automatically synchronize with D-Link's Internet time server
NTP Server Used : ntp1.dlink.com Update Now
The time has been successfully synchronized.
(NTP Server Used: ntp1.dlink.com, Time: 2009-07-09 09:56:02)
Next time synchronization: 2009-07-16 09:56:02

SET THE TIME AND DATE MANUALLY

Year: 2009 Month: Jul Day: 9
Hour: 11 Minute: 54 Second: 19

Save Settings Don't Save Settings

Helpful Hints..
• Either enter the time manually by clicking the **Sync. Your Computers Time Settings** button, or use the **Automatic Time Configuration** option to have your router synchronize with a time server on the Internet.

More...

Internet 100%

D-LINK SYSTEMS, INC | WIRELESS ROUTER | HOME - Windows Internet Explorer

http://192.168.0.1/tools_log_setting.php

Product Page : DIR-685 Hardware Version : A1 Firmware Version : 1.00

D-Link

DIR-685 // **SETUP** **ADVANCED** **STORAGE** **TOOLS** **STATUS** **SUPPORT**

Admin
Time
Log Settings
Email Settings
System
Firmware
Dynamic DNS
System Check
Schedules

LOG SETTINGS

Logs can be saved by sending it to an admin email address.

SAVE LOG FILE

Save Log File To Local Hard Drive

LOG TYPE

Log Type	<input checked="" type="checkbox"/> System Activity
	<input type="checkbox"/> Debug Information
	<input checked="" type="checkbox"/> Attacks
	<input type="checkbox"/> Dropped Packets
	<input checked="" type="checkbox"/> Notice

Helpful Hints..

- Click on the **Save** button to save the log file to a local hard drive which can later be sent to the network administrator for troubleshooting. You can also select what type of event you would like logged from **Log Type**.

More...

Internet 100%

D-LINK SYSTEMS, INC | WIRELESS ROUTER | HOME - Windows Internet Explorer

http://192.168.0.1/tools_log_mail.php

Product Page : DIR-685 Hardware Version : A1 Firmware Version : 1.00

D-Link

DIR-685 // SETUP ADVANCED STORAGE **TOOLS** STATUS SUPPORT

Admin
Time
Log Settings
Email Settings
System
Firmware
Dynamic DNS
System Check
Schedules

EMAIL SETTINGS

The Email feature can be used to send the system log files, router alert messages, and firmware update notifications to your email address.

ENABLE

Enable Email Notification

EMAIL SETTINGS

From Email Address
To Email Address
Email Subject
SMTP Server Address
SMTP Server Port
Enable Authentication
Account Name
Password
Verify Password

Helpful Hints..

- You may want to make the email settings similar to those of your email client program.

[More...](#)

Internet 100%

D-LINK SYSTEMS, INC | WIRELESS ROUTER | HOME - Windows Internet Explorer

http://192.168.0.1/tools_system.php

Product Page : DIR-685 Hardware Version : A1 Firmware Version : 1.00

D-Link

DIR-685 // SETUP ADVANCED STORAGE **TOOLS** STATUS SUPPORT

Admin
Time
Log Settings
Email Settings
System
Firmware
Dynamic DNS
System Check
Schedules

SAVE AND RESTORE SETTINGS

Once the router is configured you can save the configuration settings to a configuration file on your hard drive. You also have the option to load configuration settings, or restore the factory default settings.

SAVE AND RESTORE SETTINGS

Save Settings To Local Hard Drive :

Load Settings From Local Hard Drive :

Restore To Factory Default Settings :

Reboot :

Clear Language Pack :

Helpful Hints..

- Once your router is configured the way you want it, you can save these settings to a configuration file that can later be loaded in the event that the router's default settings are restored. To do this, click the **Save** button next to where it says Save Settings to Local Hard Drive.

[More...](#)

Internet 100%

D-LINK SYSTEMS, INC | WIRELESS ROUTER | HOME - Windows Internet Explorer

http://192.168.0.1/tools_firmware.php

Product Page : DIR-685 Hardware Version : A1 Firmware Version : 1.00

D-Link

DIR-685	SETUP	ADVANCED	STORAGE	TOOLS	STATUS	SUPPORT
----------------	--------------	-----------------	----------------	--------------	---------------	----------------

Admin

Time

Log Settings

Email Settings

System

Firmware

Dynamic DNS

System Check

Schedules

FIRMWARE UPDATE

There may be new firmware for your DIR-685 to improve functionality and performance. [Click here to check for an upgrade on our support site.](#)

To upgrade the firmware, locate the upgrade file on the local hard drive with the Browse button. Once you have found the file to be used, click the Upload button to start the firmware upgrade.

The language pack allows you to change the language of the user interface on the DIR-685. We suggest that you upgrade your current language pack if you upgrade the firmware. This ensures that any changes in the firmware are displayed correctly.

To upgrade the language pack, locate the upgrade file on the local hard drive with the Browse button. Once you have found the file to be used, click the Upload button to start the language pack upgrade.

FIRMWARE INFORMATION

Current Firmware Version : 1.00
Current Firmware Date : Tue 26 May 2009

Check Online Now for Latest Firmware Version :

FIRMWARE UPGRADE

Note: Some firmware upgrades reset the configuration options to the factory defaults. Before performing an upgrade, be sure to save the current configuration.

To upgrade the firmware, your PC must have a wired connection to the router. Enter the name of the firmware upgrade file, and click on the Upload button.

Upload :

LANGUAGE PACK UPGRADE

Upload :

Helpful Hints..

- Firmware Update** are released periodically to improve the functionality of your router and also to add features. If you run into a problem with a specific feature of the router, check our support site by clicking on the **Click here to check for an upgrade on our support site** and see if an updated version of firmware is available for your router.

[More...](#)

Internet 100%

D-LINK SYSTEMS, INC | WIRELESS ROUTER | HOME - Windows Internet Explorer

http://192.168.0.1/tools_ddns.php

Product Page : DIR-685 Hardware Version : A1 Firmware Version : 1.00

D-Link

DIR-685 // SETUP ADVANCED STORAGE **TOOLS** STATUS SUPPORT

Admin
Time
Log Settings
Email Settings
System
Firmware
Dynamic DNS
System Check
Schedules

DYNAMIC DNS

The Dynamic DNS feature allows you to host a server (Web, FTP, Game Server, etc...) using a domain name that you have purchased (www.whateveryournameis.com) with your dynamically assigned IP address. Most broadband Internet Service Providers assign dynamic (changing) IP addresses. Using a DDNS service provider, your friends can enter your host name to connect to your game server no matter what your IP address is.

[Sign up for D-Link's Free DDNS service at www.DLinkDDNS.com.](http://www.DLinkDDNS.com)

Save Settings Don't Save Settings

DYNAMIC DNS SETTINGS

Enable DDNS :

Server Address : dlinkddns.com(Free) ▼

Host Name :

Username :

Password :

DDNS Account Testing

Helpful Hints..

- To use this feature, you must first have a Dynamic DNS account from one of the providers in the drop down menu.

More...

Internet 100%

D-LINK SYSTEMS, INC | WIRELESS ROUTER | HOME - Windows Internet Explorer

http://192.168.0.1/tools_ddns.php

Product Page : DIR-685 Hardware Version : A1 Firmware Version : 1.00

D-Link

DIR-685 // SETUP ADVANCED STORAGE **TOOLS** STATUS SUPPORT

Admin
Time
Log Settings
Email Settings
System
Firmware
Dynamic DNS
System Check
Schedules

DYNAMIC DNS

The Dynamic DNS feature allows you to host a server (Web, FTP, Game Server, etc...) using a domain name that you have purchased (www.whateveryournameis.com) with your dynamically assigned IP address. Most broadband Internet Service Providers assign dynamic (changing) IP addresses. Using a DDNS service provider, your friends can enter your host name to connect to your game server no matter what your IP address is.

[Sign up for D-Link's Free DDNS service at www.DLinkDDNS.com.](http://www.DLinkDDNS.com)

Save Settings Don't Save Settings

DYNAMIC DNS SETTINGS

Enable DDNS :

Server Address : dlinkddns.com(Free) [v]
Host Name : dlinkddns.com(Free) [v]
Username : DynDns.org(Custom) [v]
Password : [v]

DDNS Account Testing

Helpful Hints..

- To use this feature, you must first have a Dynamic DNS account from one of the providers in the drop down menu.

More...

Internet 100%

D-LINK SYSTEMS, INC | WIRELESS ROUTER | HOME - Windows Internet Explorer

http://192.168.0.1/tools_vct.php?uptime=170951

Product Page : DIR-685 Hardware Version : A1 Firmware Version : 1.00

D-Link

DIR-685 // SETUP ADVANCED STORAGE **TOOLS** STATUS SUPPORT

Admin
Time
Log Settings
Email Settings
System
Firmware
Dynamic DNS
System Check
Schedules

SYSTEM CHECK

The System Check tool can be used to verify the physical connectivity on both the LAN and Internet interfaces. The Ping Test tool can be used to verify the status of the Internet connection.

VCT INFO

Ports	Link Status	
Internet		100Mbps FULL Duplex
LAN4		Disconnected
LAN3		100Mbps FULL Duplex
LAN2		Disconnected
LAN1		100Mbps FULL Duplex

PING TEST

Ping Test is used to send "Ping" packets to test if a computer is on the Internet.

Host Name or IP Address :

PING RESULT

Helpful Hints..

- "Ping" checks whether a computer on the Internet is running and responding. Enter either the IP address of the target computer or enter its fully qualified domain name.

More...

Done Internet 100%

D-LINK SYSTEMS, INC | WIRELESS ROUTER | HOME - Windows Internet Explorer

http://192.168.0.1/tools_sch.php

Product Page : DIR-685 Hardware Version : A1 Firmware Version : 1.00

D-Link

DIR-685 // SETUP ADVANCED STORAGE **TOOLS** STATUS SUPPORT

Admin
Time
Log Settings
Email Settings
System
Firmware
Dynamic DNS
System Check
Schedules

SCHEDULES

The Schedule configuration option is used to manage schedule rules for "Internet Setup", "Wireless Setup", "Network Filter", "Guest Zone", "Firewall Settings" and "Website Filter".

Save Settings Don't Save Settings

10 - ADD SCHEDULE RULE

Name :

Day(s) : All Week Select Day(s)

Sun Mon Tue Wed Thu Fri Sat

All Day - 24 hrs :

Start Time : 00 : 00 AM (hour:minute, 12 hour time)

End Time : 00 : 00 AM (hour:minute, 12 hour time)

SCHEDULE RULES LIST

Name	Day(s)	Time Frame
------	--------	------------

Helpful Hints..

- Schedules are used with a number of other features to define when those features are in effect.
- Give each schedule a name that is meaningful to you. For example, a schedule for Monday through Friday from 3:00pm to 9:00pm, might be called "After School".
- Click **Save** to add a completed schedule to the list below.
- Click the **Edit** icon to change an existing schedule.
- Click the **Delete** icon to permanently delete a schedule.

More...

Done Internet 100%

D-LINK SYSTEMS, INC | WIRELESS ROUTER | HOME - Windows Internet Explorer

http://192.168.0.1/st_device.php

D-LINK SYSTEMS, INC | WIRELESS ROUTER | HOME

Internet Session

Wireless

GENERAL

Time : 2009/07/09 12:08:59
Firmware Version : 1.00 , Tue 26 May 2009

WAN

Connection Type : PPPoE
 Cable Status : 100 Full
 Network Status : Connected
 Connection Up Time : 0 Days, 02:13:02

MAC Address : 00:22:b0:f0:ce:9d
 IP Address : 203.214.5.169
 Subnet Mask : 255.255.255.255
 Default Gateway : 203.214.5.169
 DNS : 203.0.178.191 203.215.29.191

LAN

MAC Address : 00:22:b0:f0:ce:9c
 IP Address : 192.168.0.1
 Subnet Mask : 255.255.255.0
 DHCP Server : Enabled

WIRELESS LAN

Wireless Radio : Enable
 MAC Address : 00:22:b0:f0:ce:9c
 Wireless Band : 2.4GHz
 SSID : clintdir685
 Channel : 6
 Security Mode : WPA/WPA2-CIPHER_AUTO-PSK

LAN COMPUTER

IP Address	Name (if any)	MAC
192.168.0.102	pc4	00:05:5D:D0:C5:05
192.168.0.100	clint-laptop	00:15:C5:7A:EA:A4

IGMP MULTICAST MEMBERSHIPS

Multicast Group IP	Membership IP
239.255.0.1	192.168.0.102
239.255.0.1	192.168.0.100

UPNP SERVICE

Service Name	IP	Internal Port	External Port	Protocol

More...

Internet 100%

D-LINK SYSTEMS, INC | WIRELESS ROUTER | HOME - Windows Internet Explorer

http://192.168.0.1/st_log.php

Product Page : DIR-685 Hardware Version : A1 Firmware Version : 1.00

D-Link

DIR-685 // SETUP ADVANCED STORAGE TOOLS STATUS SUPPORT

Device Info

Log

Statistics

Internet Session

Wireless

VIEW LOG

The View Log displays the activities occurring on the DIR-685.

LOG FILES

First Page Last Page Previous Next Clear Link To Log Settings

Page 1 of 16

Time	Message
Jul 9 12:08:17	Remote management is disabled.
Jul 9 12:08:17	Block WAN PING is disabled.
Jul 9 12:05:24	Remote management is disabled.
Jul 9 12:05:24	Block WAN PING is disabled.
Jul 9 12:05:24	DHCP: Server sending ACK to 192.168.0.100. (Lease time = 86400)
Jul 9 12:05:24	DHCP: Server receive REQUEST from 00:15:c5:7a:ea:a4.
Jul 9 12:05:24	DHCP: Server sending OFFER of 192.168.0.100.
Jul 9 12:02:31	VPN (L2TP) Pass-Through enabled.
Jul 9 12:02:31	VPN (IPSec) Pass-Through enabled.
Jul 9 12:02:31	VPN (PPTP) Pass-Through enabled.

Helpful Hints..

- Check the log frequently to detect unauthorized network usage.

More...

Internet 100%

D-LINK SYSTEMS, INC | WIRELESS ROUTER | HOME - Windows Internet Explorer

http://192.168.0.1/st_stats.php

Product Page : DIR-685 Hardware Version : A1 Firmware Version : 1.00

D-Link

DIR-685 // SETUP ADVANCED STORAGE TOOLS STATUS SUPPORT

Device Info
Log
Statistics
Internet Session
Wireless

TRAFFIC STATISTICS

Traffic Statistics displays Receive and Transmit packets passing through the DIR-685.

TRAFFIC STATISTICS

	Receive	Transmit
Internet	16658 Packets	25175 Packets
LAN	47402 Packets	87012 Packets
WIRELESS 11n	5 Packets	59243 Packets

Helpful Hints..

- This is a summary displaying the number of packets that have passed between the Internet and the LAN since the router was last initialized.


[More...](#)

Internet 100%

D-LINK SYSTEMS, INC | WIRELESS ROUTER | HOME - Windows Internet Explorer

http://192.168.0.1/st_session.php?uptime=171089

Product Page : DIR-685 Hardware Version : A1 Firmware Version : 1.00



DIR-685 // SETUP ADVANCED STORAGE TOOLS STATUS SUPPORT

Device Info
Log
Statistics
Internet Session
Wireless

INTERNET SESSION

Internet Session displays Source and Destination packets passing through the DIR-685.

NAPT SESSIONS

TCP Sessions : 1
UDP Sessions : 2
Total : 3

NAPT ACTIVE SESSIONS

IP Address	TCP Sessions	UDP Sessions
203.0.178.191	0	1
192.168.0.102	1	0
192.168.0.100	0	1

Helpful Hints..

- This is a list of all active conversations between WAN computers and LAN computers.

More...

Internet 100%

D-LINK SYSTEMS, INC | WIRELESS ROUTER | HOME - Windows Internet Explorer

http://192.168.0.1/st_wlan.php

Product Page : DIR-685 Hardware Version : A1 Firmware Version : 1.00

D-Link

DIR-685 // SETUP ADVANCED STORAGE TOOLS STATUS SUPPORT

Device Info
Log
Statistics
Internet Session
Wireless

WIRELESS

The Wireless Client table below displays Wireless clients Connected to the AP (Access Point).

CONNECTED WIRELESS CLIENTS LIST

Connect Time	MAC Address	Mode
--------------	-------------	------

Helpful Hints..

- This is a list of all wireless clients that are currently connected to your wireless router.

More...

Done Internet 100%

D-LINK SYSTEMS, INC | WIRELESS ROUTER | HOME - Windows Internet Explorer

http://192.168.0.1/spt_menu.php

PRODUCT Page: DIR-685 Routerware Version: 4.1 Firmware Version: 1.00

D-Link

DIR-685 // SETUP ADVANCED STORAGE TOOLS STATUS SUPPORT

Menu
Setup
Advanced
Storage
Tools
Status

SUPPORT MENU

- [Setup](#)
- [Advanced](#)
- [Storage](#)
- [Tools](#)
- [Status](#)

SETUP

- [Internet Setup](#)
- [Wireless Setup](#)
- [Network Setup](#)
- [LCD Setup](#)

ADVANCED

- [Port Forwarding](#)
- [Application Rules](#)
- [QoS Engine](#)
- [Network Filter](#)
- [Website Filter](#)
- [Firewall Settings](#)
- [Routing](#)
- [Advanced Wireless](#)
- [Advanced Network](#)
- [Guest Zone](#)
- [Wake on LAN](#)

STORAGE

- [Disk Management](#)
- [Users/Groups](#)
- [Storage Access](#)
- [FTP Server](#)
- [UPnP AV Server](#)
- [iTunes Server](#)
- [BT Download Manager](#)

TOOLS

- [Admin](#)
- [Time](#)
- [Log Settings](#)
- [Email Settings](#)
- [System](#)
- [Firmware](#)
- [Dynamic DNS](#)
- [System Check](#)
- [Schedules](#)

STATUS

- [Device Info](#)
- [Log](#)
- [Statistics](#)
- [Internet Session](#)
- [Wireless](#)

WIRELESS

Internet 75%

D-LINK SYSTEMS, INC | WIRELESS ROUTER | HOME - Windows Internet Explorer

http://192.168.0.1/spt_bsc.php

Product Page : DIR-685 Hardware Version : A1 Firmware Version : 1.00

D-Link

DIR-685	SETUP	ADVANCED	STORAGE	TOOLS	STATUS	SUPPORT
---------	-------	----------	---------	-------	--------	---------

Menu

- Setup
- Advanced
- Storage
- Tools
- Status

SETUP

- [Internet Setup](#)
- [Wireless Setup](#)
- [Network Setup](#)
- [LCD Setup](#)

INTERNET SETUP

If you are configuring the device for the first time, we recommend that you click on the Internet Connection Setup Wizard, and follow the instructions on the screen. If you wish to modify or configure the device settings manually, click Manual Internet Connection Setup.

Launch Internet Connection Setup Wizard
Click this button to have the router walk you through a few simple steps to help you connect your router to the Internet.

Launch Wireless Security Setup Wizard
Click this button to have the router walk you through configuring the settings of your wireless network, including security.

Manual Internet Connection Setup
Choose this option if you would like to input the settings needed to connect your router to the Internet manually.

Access Point Mode
Enable "Access Point Mode" will make the device function like a wireless AP. All the NAT functions will be disabled except settings related to the wireless connection.

Internet Connection Type
The Internet Connection Settings are used to connect the DIR-685 to the Internet. Any information that needs to be entered on this page will be provided to you by your ISP and often times referred to as "public settings". Please select the appropriate option for your specific ISP. If you are unsure of which option to select, please contact your ISP.

Static IP Address
Select this option if your ISP (Internet Service Provider) has provided you with an IP address, Subnet Mask, Default Gateway, and a DNS server address. Enter this information in the appropriate fields. If you are unsure of what to enter in these fields, please contact your ISP.

Dynamic IP Address
Select this option if your ISP (Internet Service Provider) provides you with an IP address automatically. Cable modem providers typically use dynamic assignment of IP Addresses.

Host Name (optional) - The Host Name field is optional but may be required by some Internet Service Providers. The default host name is the model number of the router.

MAC Address (optional) - The MAC (Media Access Control) Address field is required by some Internet Service Providers (ISP). The default MAC address is set to the MAC address of the WAN interface on the DIR-685. You can use the "Clone MAC Address" button to automatically copy the MAC address of the Ethernet Card installed in the computer used to configure the device. It is only necessary to fill in the field if required by your ISP.

Primary DNS Address - Enter the Primary DNS (Domain Name Service) server IP address provided to you by your ISP.

Secondary DNS Address (optional) - If you were given a secondary DNS server IP address from your ISP, enter it in this field.

Internet 100%

D-LINK SYSTEMS, INC | WIRELESS ROUTER | HOME - Windows Internet Explorer

http://192.168.0.1/spt_bsc.php

D-LINK SYSTEMS, INC | WIRELESS ROUTER | HOME

MTU - MTU (Maximum Transmission/Transfer Unit) is the largest packet size that can be sent over a network. Messages larger than the MTU are divided into smaller packets. 1500 is the default value for this option. Changing this number may adversely affect the performance of your router. Only change this number if instructed to by one of our Technical Support Representatives or by your ISP.

PPPoE
Select this option if your ISP requires you to use a PPPoE (Point to Point Protocol over Ethernet) connection. DSL providers typically use this option. Select Dynamic PPPoE to obtain an IP address automatically for your PPPoE connection (used by majority of PPPoE connections). Select Static PPPoE to use a static IP address for your PPPoE connection.

User Name - Enter your PPPoE username.
Password - Enter your PPPoE password.
Service Name (optional) - If your ISP uses a service name for the PPPoE connection, enter the service name here.
IP Address - This option is only available for Static PPPoE. Enter in the static IP address for the PPPoE connection.
MAC Address (optional) - The MAC (Media Access Control) Address field is required by some Internet Service Providers (ISP). The default MAC address is set to be the MAC address of the WAN interface on the DIR-685. You can use the "Clone MAC Address" button to automatically copy the MAC address of the Ethernet Card installed in the computer that is being used to configure the device. It is only necessary to fill in this field if required by your ISP.
Primary DNS Address - Primary DNS (Domain Name System) server IP address, which may be provided by your ISP. You should only need to enter this information if you selected Static PPPoE. If Dynamic PPPoE is chosen, leave this field at its default value as your ISP will provide you this information automatically.
Secondary DNS Address (optional) - If you were given a secondary DNS server IP address from your ISP, enter it in this field.
Maximum Idle time - The amount of inactivity time (in minutes) before the device will disconnect your PPPoE session. Enter a Maximum Idle Time (in minutes) to define a maximum period of time for which the Internet connection is maintained during inactivity. If the connection is inactive for longer than the defined Maximum Idle Time, then the connection will be dropped. This option only applies to the Connect-on-demand Connection mode.
MTU - MTU (Maximum Transmission/Transfer Unit) is the largest packet size that can be sent over a network. Messages larger than the MTU are divided into smaller packets. 1492 is the default value for this option. Changing this number may adversely affect the performance of your router. Only change this number if instructed to by one of our Technical Support Representatives or by your ISP.
Connect mode select - Select Always-on if you would like the router to never disconnect the PPPoE session. Select Manual if you would like to control when the router is connected and disconnected from the Internet. The Connect-on-demand option allows the router to establish a connection to the Internet only when a device on your network tries to access a resource on the Internet.

PPTP
Select this option if your ISP uses a PPTP (Point to Point Tunneling Protocol) connection and has assigned you a username and password in order to access the Internet. Select Dynamic PPTP to obtain an IP address automatically for your PPTP connection. Select Static PPTP to use a static IP address for your PPTP connection.

IP Address - Enter the IP address that your ISP has assigned to you.
Subnet Mask - Enter the Subnet Mask that your ISP has assigned to you.
Gateway - Enter the Gateway IP address assigned to you by your ISP.
DNS - Enter the DNS address assigned to you by your ISP.
Server IP - Enter the IP address of the server, which will be provided by your ISP, that you will be connecting to.
Account - Enter your PPTP Username.
Password - Enter your PPTP Password.
Maximum Idle time - The amount of time of inactivity before the device will disconnect your PPTP session. Enter a Maximum Idle Time (in minutes) to define a maximum period of time for which the Internet connection is maintained during inactivity. If the connection is inactive for longer than the specified Maximum Idle Time, the connection will be dropped. This option only applies to the Connect-on-demand Connection mode.
MTU - MTU (Maximum Transmission/Transfer Unit) is the largest packet size that can be sent over a network. Messages larger than the MTU are divided into smaller packets. 1400 is the default value for this option. Changing this number may adversely affect the performance of your router. Only change this number if instructed to by one of our Technical Support Representatives or by your ISP.
Connection mode select - Select Always-on if you would like the router to never disconnect the PPTP session. Select Manual if you would like to control when the router is connected and disconnected from the Internet. The Connect-on-demand option allows the router to establish a connection to the Internet only when a device on your network tries to access a resource on the Internet.

Internet 100%

D-LINK SYSTEMS, INC | WIRELESS ROUTER | HOME - Windows Internet Explorer

http://192.168.0.1/spt_bsc.php

D-LINK SYSTEMS, INC | WIRELESS ROUTER | HOME

L2TP
Select this option if your ISP uses a L2TP (Layer 2 Tunneling Protocol) connection and has assigned you a username and password in order to access the Internet. Select Dynamic L2TP to obtain an IP address automatically for your L2TP connection. Select Static L2TP to use a static IP address for your L2TP connection.

IP Address - Enter the IP address that your ISP has assigned to you.
Subnet Mask - Enter the Subnet Mask that your ISP has assigned to you.
Gateway - Enter the Gateway IP address assigned to you by your ISP.
DNS - Enter the DNS address assigned to you by your ISP.
Server IP - Enter the IP address of the server, which will be provided by your ISP, that you will be connecting to.
L2TP Account - Enter your L2TP Username.
L2TP Password - Enter your L2TP Password.
Maximum Idle time - The amount of inactivity time (in minutes) before the device will disconnect your L2TP session. Enter a Maximum Idle Time (in minutes) to define a maximum period of time for which the Internet connection is maintained during inactivity. If the connection is inactive for longer than the defined Maximum Idle Time, then the connection will be dropped. This option only applies to the Connect-on-demand Connection mode.
MTU - MTU (Maximum Transmission/Transfer Unit) is the largest packet size that can be sent over a network. Messages larger than the MTU are divided into smaller packets. 1400 is the default value for this option. Changing this number may adversely affect the performance of your router. Only change this number if instructed to by one of our Technical Support Representatives or by your ISP. **Connect mode select** - Select Always-on if you would like the router to never disconnect the L2TP session. Select Manual if you would like to control when the router is connected and disconnected from the Internet. The Connect-on-demand option allows the router to establish a connection to the Internet only when a device on your network tries to access a resource on the Internet.

Russian PPTP (Dual Access)
To configure a Russian PPTP Internet connection, configure as previously described for PPTP connections. If any static route needs to be setup by your ISP, please refer to the "Routing" function in "ADVANCED" menu for further setup.

Russian PPPoE (Dual Access)
Some PPPoE connections use a static IP route to the ISP in addition to the global IP settings for the connection. This requires an added step to define IP settings for the physical WAN port. To configure a Russian PPPoE Internet connection, configure as previously described for PPPoE connections and add the physical WAN IP settings as instructed by your ISP. If any static route needs to be setup by your ISP, please refer to the "Routing" function in "ADVANCED" menu for further setup.

WIRELESS SETUP

The Wireless Setup page contains the settings for the (Access Point) Portion of the DIR-685. This page allows you to customize your wireless network or configure the DIR-685 to fit an existing wireless network that you may already have setup.

Wi-Fi Protected Setup (Also called WCN 2.0 in Windows Vista)
This feature provides users a more intuitive way of setting up wireless security. It is available in two formats: PIN number and Push button. Enter the PIN number that comes with the device in the wireless card utility or Windows Vista's wireless client utility if the wireless card has a certified Windows Vista driver to automatically set up wireless security between the router and the client. The wireless card will have to support Wi-Fi Protected Setup in either format in order to take advantage of this feature.

Wireless Network Name
Also known as the SSID (Service Set Identifier), this is the name of your Wireless Local Area Network (WLAN). By default the SSID of the DIR-685 is "dlink". This can be easily changed to establish a new wireless network or to add the DIR-685 to an existing wireless network.

Wireless Channel
Indicates which channel the DIR-685 is operating on. By default the channel is set to 6. This can be changed to fit the channel setting for an existing wireless network or to customize your new wireless network. Click the Enable Auto Scan checkbox to have the DIR-685 automatically select the channel that it will operate on. This option is recommended because the router will choose the channel with the least amount of interference.

Internet 100%

D-LINK SYSTEMS, INC | WIRELESS ROUTER | HOME - Windows Internet Explorer

http://192.168.0.1/spt_bsc.php

D-LINK SYSTEMS, INC | WIRELESS ROUTER | HOME

Transmission (TX) Rates
Select the basic transfer rates based on the speed of wireless adapters on the WLAN (wireless local area network).

WMM
Select Enable to turn on QoS for the wireless interface of the DIR-685.

Enable Hidden Wireless
Select Enabled if you would not like the SSID of your wireless network to be broadcasted by the DIR-685. If this option is Enabled, the SSID of the DIR-685 will not be seen by Site Survey utilities, so when setting up your wireless clients, you will have to know the SSID of your DIR-685 and enter it manually in order to connect to the router. This option is enabled by default.

Wireless Security Mode
Securing your wireless network is important as it is used to protect the integrity of the information being transmitted over your wireless network. The DIR-685 is capable of 4 types of wireless security; WEP, WPA only, WPA2 only, and WPA/WPA2 (auto-detect)

WEP
Wired Equivalent Protocol (WEP) is a wireless security protocol for Wireless Local Area Networks (WLAN). WEP provides security by encrypting the data that is sent over the WLAN. The DIR-685 supports 2 levels of WEP Encryption: 64-bit and 128-bit. WEP is disabled by default. The WEP setting can be changed to fit an existing wireless network or to customize your wireless network.

Authentication - Authentication is a process by which the DIR-685 verifies the identity of a network device that is attempting to join the wireless network. There are two types authentication for this device when using WEP.

Open System - Select this option to allow all wireless devices to communicate with the DIR-685 before they are required to provide the encryption key needed to gain access to the network.

Shared Key - Select this option to require any wireless device attempting to communicate with the DIR-685 to provide the encryption key needed to access the network before they are allowed to communicate with the DIR-685.

WEP Encryption - Select the level of WEP Encryption that you would like to use on your network. The two supported levels of WEP encryption are 64-bit and 128-bit.

Key Type - The Key Types that are supported by the DIR-685 are HEX (Hexadecimal) and ASCII (American Standard Code for Information Interchange.) The Key Type can be changed to fit an existing wireless network or to customize your wireless network.

Keys - Keys 1-4 allow you to easily change wireless encryption settings to maintain a secure network. Simply select the specific key to be used for encrypting wireless data on the network.

WPA-Personal
Wi-Fi Protected Access authorizes and authenticates users onto the wireless network. WPA uses stronger security than WEP and is based on a key that changes automatically at regular intervals.

Cipher Type - The DIR-685 supports two different cipher types when WPA is used as the Security Type. These two options are TKIP (Temporal Key Integrity Protocol) and AES (Advanced Encryption Standard).

PSK/EAP - When PSK is selected, your wireless clients will need to provide a Passphrase for authentication. When EAP is selected, you will need to have a RADIUS server on your network which will handle the authentication of all your wireless clients.

Passphrase - This is what your wireless clients will need in order to communicate with your DIR-685. When PSK is selected enter 8-63 alphanumeric characters. Be sure to write this Passphrase down as you will need to enter it on any other wireless devices you are trying to add to your network.

802.1X - This means that WPA authentication will be used in conjunction with a RADIUS server that must be present on your network. Enter the IP address, port, and Shared Secret that your RADIUS is configured for. You also have the option to enter information for a second RADIUS server in the event that there are two on your network that you are using to authenticate wireless clients.

WPA2
Wi-Fi Protected Access 2 authorizes and authenticates users onto the wireless network. WPA2 uses stronger security than WEP and is based on a key that changes automatically at regular intervals.

Internet 100%

D-LINK SYSTEMS, INC | WIRELESS ROUTER | HOME - Windows Internet Explorer

http://192.168.0.1/spt_bsc.php

D-LINK SYSTEMS, INC | WIRELESS ROUTER | HOME

Cipher Type - The DIR-685 supports two different cipher types when WPA is used as the Security Type. These two options are TKIP (Temporal Key Integrity Protocol) and AES (Advanced Encryption Standard).

PSK/EAP - When PSK is selected, your wireless clients will need to provide a Passphrase for authentication. When EAP is selected, you will need to have a RADIUS server on your network which will handle the authentication of all your wireless clients.

Passphrase - This is what your wireless clients will need in order to communicate with your DIR-685, when PSK is selected. Enter 8-63 alphanumeric characters. Be sure to write this Passphrase down as you will need to enter it on any other wireless devices you are trying to add to your network.

802.1X - This means that WPA2 authentication is used in conjunction with a RADIUS server that must be present on your network. Enter the IP address, port, and Shared Secret that your RADIUS is configured for. You also have the option to enter information for a second RADIUS server in the event that there are two on your network, which you are using to authenticate wireless clients.

WPA2-Auto
This option allows the DIR-685 to have both WPA2 and WPA clients connected to it simultaneously.

NETWORK SETUP

These are the settings of the LAN (Local Area Network) interface for the device. These settings may be referred to as "private settings". You may change the LAN IP address if needed. The LAN IP address is private to your internal network and cannot be seen on the Internet. The default IP address is 192.168.0.1 with a subnet mask of 255.255.255.0.

IP Address - IP address of the DIR-685, default is 192.168.0.1.
Subnet Mask - Subnet Mask of DIR-685, default is 255.255.255.0.
Local Domain Name (optional) - Enter in the local domain name for your network.

DNS Relay - When DNS Relay is enabled, DHCP clients of the router will be assigned the router's LAN IP address as their DNS server. All DNS requests that the router receives will be forwarded to your ISP's DNS servers. When DNS relay is disabled, all DHCP clients of the router will be assigned the ISP's DNS server.

DHCP Server
DHCP stands for Dynamic Host Control Protocol. The DHCP server assigns IP addresses to devices on the network that request them. These devices must be set to "Obtain the IP address automatically". By default, the DHCP Server is enabled on the DIR-685. The DHCP address pool contains the range of IP addresses that will automatically be assigned to the clients on the network.

DHCP Reservation
Enter the "Computer Name", "IP Address" and "MAC Address" manually for the PC that you want the router to statically assign the same IP to or choose the PC from the drop-down menu, which shows current DHCP clients.

Starting IP address The starting IP address for the DHCP server's IP assignment.
Ending IP address The ending IP address for the DHCP server's IP assignment.
Lease Time The length of time in minutes for the IP lease.

Dynamic DHCP client computers connected to the unit will have their information displayed in the Dynamic DHCP Client Table. The table will show the Host Name, IP Address, MAC Address, and Expired Time of the DHCP lease for each client computer.

LCD SETUP

The LCD Setup page controls the settings of the display panel on your DIR-685 device. This page allows you to control the screen saver and adjust the amount of time the device needs to be idle before the LCD Screen turns off.

Screen Saver Setting - The screen saver will display the "screen_bg.jpg" picture stored in the root directory of the internal hard drive in the background, with the current date and time moving randomly above the picture. If this picture cannot be found, the background will remain black. The "Timeout" setting indicates the amount of minutes required before the device enters screen saving mode, if left idle. The device will exit screen saver mode if any button on the Touch Pad is pressed.

Display Setting - This setting will turn off the LCD display screen to save power if the device is left idle for the amount

Internet 100%

of minutes configured in the "Timeout" field. The LCD display screen will power on again if any of the Touch Pad buttons are pressed.

WIRELESS

Copyright © 2004-2007 D-Link Systems, Inc.

Internet 100%

D-LINK SYSTEMS, INC | WIRELESS ROUTER | HOME - Windows Internet Explorer

http://192.168.0.1/spt_adv.php

Product Page : DIR-685 Hardware Version : A1 Firmware Version : 1.00

D-Link

DIR-685	SETUP	ADVANCED	STORAGE	TOOLS	STATUS	SUPPORT
---------	-------	----------	---------	-------	--------	---------

Menu

- Setup
- Advanced
- Storage
- Tools
- Status

ADVANCED

- [Port Forwarding](#)
- [Application Rules](#)
- [QoS Engine](#)
- [Network Filter](#)
- [Website Filter](#)
- [Firewall Settings](#)
- [Routing](#)
- [Advanced Wireless](#)
- [Advanced Network](#)
- [Guest Zone](#)
- [Wake on LAN](#)

PORT FORWARDING

The Advanced Port Forwarding option gives Internet users access to services on your LAN. This feature is useful for hosting online services such as FTP, Web or game servers. For each entry, you define a public port on your router for redirection to an internal LAN IP Address and LAN port.

Advanced Port Forwarding Parameters

Name - Assign a meaningful name to the virtual server, for example Web Server. Several well-known types of virtual server are available from the "Application Name" drop-down list. Selecting one of these entries fills some of the remaining parameters with standard values for that type of server.

IP Address - The IP address of the system on your internal network that will provide the virtual service, for example 192.168.0.50. You can select a computer from the list of DHCP clients in the "Computer Name" drop-down menu, or you can manually enter the IP address of the server computer.

Application Name - A list of pre-defined popular applications that users can choose from for faster configuration.

Computer Name - A list of DHCP clients.

Traffic Type - Select the protocol used by the service. The common choices -- UDP, TCP and both UDP and TCP -- can be selected from the drop-down menu.

Private Port - The port that will be used on your internal network.

Public Port - The port that will be accessed from the Internet.

APPLICATION RULES

Some applications require multiple connections, such as Internet gaming, video conferencing, Internet telephony and others. These applications have difficulties working through NAT (Network Address Translation). If you need to run applications that require multiple connections, specify the port normally associated with an application in the "Trigger Port" field, select the protocol type as TCP (Transmission Control Protocol) or UDP (User Datagram Protocol), then enter the public ports associated with the trigger port in the Firewall Port field to open them for inbound traffic. There are already defined well-known applications in the Application Name drop-down menu.

Name - This is the name referencing the application.

Trigger Port - This is the port used to trigger the application. It can be either a single port or a range of ports.

Traffic Type - This is the protocol used to trigger the application.

Firewall Port - This is the port number on the WAN side that will be used to access the application. You may define a single port or a range of ports. You can use a comma to add multiple ports or port ranges.

Traffic Type - This is the protocol used for the application.

Internet 100%

D-LINK SYSTEMS, INC | WIRELESS ROUTER | HOME - Windows Internet Explorer

http://192.168.0.1/spt_adv.php

D-LINK SYSTEMS, INC | WIRELESS ROUTER | HOME

QOS ENGINE

This Smart QoS improves your VoIP voice quality or streaming by ensuring that your VoIP or streaming traffic is prioritized over other network traffic, such as FTP or Web. For best performance, please tick the "lag eliminated" option to automatically set the priority for your applications.

NETWORK FILTER

Filters are used to deny or allow LAN computers from accessing the Internet and also your network. Within your network, the unit can be setup to allow or deny Internet access to computers using their MAC addresses.

MAC Filters

Use MAC Filters to deny computers within the local area network from accessing the Internet. You can either manually add a MAC address or select the MAC address from the list of clients that are currently connected to the unit. Select "Turn MAC Filtering ON and ALLOW computers with MAC address listed below to access the network" if you only want selected computers to have network access and all other computers not to have network access. Select "Turn MAC Filtering ON and DENY computers with MAC addresses listed below to access the network" if you want all computers to have network access except those computers in the list.

MAC Address - The MAC address of the network device to be added to the MAC Filter List.
DHCP Client List - DHCP clients will have their hostname listed in the Computer Name drop-down menu. You can select the client computer you want to add to the MAC Filter List and click the arrow button. This will automatically add that computer's MAC address to the appropriate field.

Users can use the **Always** drop-down menu to select a previously defined schedule or click the **Add New** button to add a new schedule.

The check box is used to enable or disable a particular entry.

WEBSITE FILTER

Along with the ability to filter devices from accessing your network and the Internet, the DIR-685 can also be configured to allow or deny access, for the computers on your network, to inappropriate websites by using a domain name or keywords.

Parental control

Parental control is used to allow or deny computers on your network from accessing specific web sites by using keywords or specific Domain Names. Select "Turn Website Filtering ON and ALLOW computers access to ONLY these sites" to only allow computers on your network to access the specified URLs and Domain Names. "Turn Website Filtering ON and DENY computers access to ONLY these sites" in order to deny computers on your network to access the specified URLs and Domain Names.

Example 1:
If you wanted to block LAN users from any website containing a URL relating to shopping, you would need to select "Turn Website Filtering ON and DENY computers access to ONLY these sites" and then enter "shopping" into the Website Filtering Rules list. Sites like these will be denied access to LAN users because they contain the keyword in the URL.
<http://www.yahoo.com/shopping/stores.html>
<http://www.msn.com/search/shopping-spree.html>

Example 2:
If you want your children to only access particular sites, you would then choose " Turn Website Filtering ON and ALLOW computers access to ONLY these sites" and then enter the domains you want your children to have access to.

- Google.com
- Cartoons.com
- Discovery.com

Internet 100%

D-LINK SYSTEMS, INC | WIRELESS ROUTER | HOME - Windows Internet Explorer

http://192.168.0.1/spt_adv.php

D-LINK SYSTEMS, INC | WIRELESS ROUTER | HOME

FIREWALL SETTINGS

The Firewall Settings section contains an option to configure a DMZ Host.

Enable SPI
SPI ("stateful packet inspection" also known as "dynamic packet filtering") helps to prevent cyber attacks by tracking more states per session. It validates that the traffic passing through that session conforms to the protocol. When the protocol is TCP, SPI checks that the packet sequence numbers are within the valid range for the session, discarding those packets that do not have valid sequence numbers. Whether SPI is enabled or not, the router always tracks TCP connection states and ensures that each TCP packet's flags are valid for the current state.

DMZ
If you have a computer that cannot run Internet applications properly from behind the DIR-685, then you can allow the computer to have unrestricted Internet access. Enter the IP address of that computer as a DMZ (Demilitarized Zone) host with unrestricted Internet access. Adding a client to the DMZ may expose that computer to a variety of security risks; so only use this option as a last resort.

Firewall Rules
Firewall Rules are used to allow or deny traffic coming in to or going out of the router based on the source and destination IP addresses as well as the traffic type and the specific port the data runs on.
Name - Users can specify a name for a Firewall Rule.
Action - Users can choose to allow or deny traffic.

Interface
Source - Use the **Source** drop-down menu to select if the starting point of the traffic that's to be allowed or denied is from the LAN or WAN interface.
Dest - Use the **Dest** drop-down menu to select if the ending point of the traffic that's to be allowed or denied is arriving on the LAN or WAN interface.
IP Address - Here you can specify a single source or dest IP address by entering the IP address in the top box or enter a range of IP addresses by entering the first IP address of the range in the top box and the last IP address of the range in the bottom one.
Protocol - Use the **Protocol** drop-down menu to select the traffic type.
Port Range - Enter the same port number in both boxes to specify a single port or enter the first port of the range in the top box and last port of the range in the bottom one to specify a range of ports.
Schedule - Use the **Always** drop-down menu to select a previously defined schedule or click on **Add New** button to add a new schedule.

ROUTING

The Routing option allows you to define static routes to specific destinations.
Enable - Specifies whether the entry will be enabled or disabled.
Interface - Specifies the interface -- WAN or WAN Physical -- that that the IP packet must use to transit out of the router, when this route is used.
Interface (WAN) - This is the interface used to receive the IP Address from the ISP to access the Internet.
Interface (WAN Physical) - This is the interface used to receive the IP Address from the ISP to access the Internet.
Destination - The IP address of packets that will take this route.
Subnet Mask - One bit in the mask that specifies which bits of the IP address must match.
Gateway - Specifies the next hop to be taken if this route is used. A gateway of 0.0.0.0 implies there is no next hop, and the IP address matched is directly connected to the router on the interface specified: WAN or WAN Physical.

ADVANCED WIRELESS

The options on this page should be changed by advanced users or if you are instructed to by one of our support personnel, as this can negatively affect the performance of your router if configured incorrectly.

Transmit Power - You can lower the output power of the DIR-685 by selecting a lower percentage of Transmit Power values from the drop-down menu. Your choices are: 100%, 50%, 25%, and 12.5%.

Beacon Interval - Beacons are packets sent by an Access Point to synchronize with the wireless network. Specify a Beacon interval value between 20 and 1000. The default value is set to 100 milliseconds.

Internet 100%

D-LINK SYSTEMS, INC | WIRELESS ROUTER | HOME - Windows Internet Explorer

http://192.168.0.1/spt_adv.php

D-LINK SYSTEMS, INC | WIRELESS ROUTER | HOME

RTS Threshold - This value should remain at its default setting of 2346. If you encounter inconsistent data flow, only minor modifications to the value range between 256 and 2346 are recommended. The default value for RTS Threshold is set to 2346.

Fragmentation - This value should remain at its default setting of 2346. If you experience a high packet error rate, you may slightly increase your "Fragmentation" value within the value range of between 1500 and 2346. Setting the Fragmentation value too low may result in poor performance.

DTIM Interval - Enter a value between 1 and 255 for the Delivery Traffic Indication Message (DTIM). A DTIM is a countdown informing clients of the next window for listening to broadcast and multicast messages. When the Access Point has buffered broadcast or multicast messages for associated clients, it sends the next DTIM with a DTIM Interval value. AP clients hear the beacons and awaken to receive the broadcast and multicast messages. The default value for DTIM interval is set to 1.

Preamble Type - The Preamble Type defines the length of the CRC (Cyclic Redundancy Check) block for communication between the Access Point and roaming wireless adapters. Make sure you select the appropriate preamble type and click the Apply button.

Note: High network traffic areas should use the shorter preamble type. CRC is a common technique for detecting data transmission errors.

CTS Mode - Select None to disable this feature. Select Always to force the router to require each wireless device on the network to perform an RTS/CTS handshake before they are allowed to transmit data. Select Auto to allow the router to decide when RTS/CTS handshakes are necessary.

ADVANCED NETWORK

This section contains settings which can change the way the router handles certain types of traffic. We recommend that you don't change any of these settings unless you are already familiar with them or have been instructed to change them by one of our support personnel.

UPnP
UPnP is short for Universal Plug and Play which is a networking architecture that provides compatibility between networking equipment, software, and peripherals. The DIR-685 is a UPnP enabled router, meaning that it will work with other UPnP devices/software. If you do not want to use the UPnP function, it can be disabled by selecting "Disabled".

WAN Ping
When you Enable WAN Ping respond, you are causing the public WAN (Wide Area Network) IP address on the device to respond to ping commands sent by Internet users. Pinging public WAN IP addresses is a common method used by hackers to test whether your WAN IP address is valid.

WAN Port Speed
This allows you to select the speed of the WAN interface of the DIR-685: Choose 100Mbps, 10Mbps, or 10/100/1000Mbps Auto.

Multicast Streams
Enable this option to allow Multicast traffic to pass from the Internet to your network more efficiently.

GUEST ZONE

Guest Zone Selection
The selection helps you to define the Guest Zone scale.

Enable Guest Zone - Specifies whether the Guest Zone will be enabled or disabled.

Wireless Network Name - Provide a name for Guest Zone wireless network.

Wireless Security Mode
Securing your wireless network is important as it is used to protect the integrity of the information being transmitted over your wireless network. The DIR-685 is capable of 4 types of wireless security: WEP, WPA only, WPA2 only, and

Internet 100%

D-LINK SYSTEMS, INC | WIRELESS ROUTER | HOME - Windows Internet Explorer

http://192.168.0.1/spt_adv.php

your wireless network. The DIR-685 is capable of 4 types of wireless security; WEP, WPA only, WPA2 only, and WPA/WPA2 (auto-detect)

WEP
Wired Equivalent Protocol (WEP) is a wireless security protocol for Wireless Local Area Networks (WLAN). WEP provides security by encrypting the data that is sent over the WLAN. The DIR-685 supports 2 levels of WEP Encryption: 64-bit and 128-bit. WEP is disabled by default. The WEP setting can be changed to fit an existing wireless network or to customize your wireless network.

Authentication - Authentication is a process by which the DIR-685 verifies the identity of a network device that is attempting to join the wireless network. There are two types authentication for this device when using WEP.
Open System -Select this option to allow all wireless devices to communicate with the DIR-685 before they are required to provide the encryption key needed to gain access to the network.
Shared Key - Select this option to require any wireless device attempting to communicate with the DIR-685 to provide the encryption key needed to access the network before they are allowed to communicate with the DIR-685.
WEP Encryption - Select the level of WEP Encryption that you would like to use on your network. The two supported levels of WEP encryption are 64-bit and 128-bit.
Key Type - The Key Types that are supported by the DIR-685 are HEX (Hexadecimal) and ASCII (American Standard Code for Information Interchange.) The Key Type can be changed to fit an existing wireless network or to customize your wireless network.
Keys - Keys 1-4 allow you to easily change wireless encryption settings to maintain a secure network. Simply select the specific key to be used for encrypting wireless data on the network.

WPA-Personal
Wi-Fi Protected Access authorizes and authenticates users onto the wireless network. WPA uses stronger security than WEP and is based on a key that changes automatically at a regular interval.

Cipher Type - The DIR-685 support two different cipher types when WPA is used as the Security Type. These two options are TKIP (Temporal Key Integrity Protocol) and AES (Advanced Encryption Standard).
PSK/EAP -When PSK is selected, your wireless clients will need to provide a Passphrase for authentication. When EAP is selected, you will need to have a RADIUS server on your network which will handle the authentication of all your wireless clients.
Passphrase - This is what your wireless clients will need in order to communicate with your DIR-685, when PSK is selected. Enter 8-63 alphanumeric characters. Be sure to write this Passphrase down as you will need to enter it on any other wireless devices you are trying to add to your network.
802.1X - This means of WPA authentication is used in conjunction with a RADIUS server that must be present on your network. Enter the IP address, port, and Shared Secret that you RADIUS is configured for. You also have the option to enter information for a second RADIUS server in the even that there are two on your network which you are using to authenticate wireless clients.

WPA2
Wi-Fi Protected Access 2 authorizes and authenticates users onto the wireless network. WPA2 uses stronger security than WEP and is based on a key that changes automatically at a regular interval.

Cipher Type - The DIR-685 support two different cipher types when WPA is used as the Security Type. These two options are TKIP (Temporal Key Integrity Protocol) and AES (Advanced Encryption Standard).
PSK/EAP - When PSK is selected, your wireless clients will need to provide a Passphrase for authentication. When EAP is selected, you will need to have a RADIUS server on your network which will handle the authentication of all your wireless clients.
Passphrase - This is what your wireless clients will need in order to communicate with your DIR-685, when PSK is selected. Enter 8-63 alphanumeric characters. Be sure to write this Passphrase down as you will need to enter it on any other wireless devices you are trying to add to your network.
802.1X - This means of WPA2 authentication is used in conjunction with a RADIUS server that must be present on your network. Enter the IP address, port, and Shared Secret that you RADIUS is configured for. You also have the option to enter information for a second RADIUS server in the even that there are two on your network which you are using to authenticate wireless clients.

WPA2-Auto
This option allows the DIR-685 to have both WPA2 and WPA clients connected to it simultaneously.

Internet 100%

D-LINK SYSTEMS, INC | WIRELESS ROUTER | HOME - Windows Internet Explorer

http://192.168.0.1/spt_adv.php

D-LINK SYSTEMS, INC | WIRELESS ROUTER | HOME

PSK/EAP - When PSK is selected, your wireless clients will need to provide a Passphrase for authentication. When EAP is selected, you will need to have a RADIUS server on your network which will handle the authentication of all your wireless clients.

Passphrase - This is what your wireless clients will need in order to communicate with your DIR-685, when PSK is selected. Enter 8-63 alphanumeric characters. Be sure to write this Passphrase down as you will need to enter it on any other wireless devices you are trying to add to your network.

802.1X - This means of WPA2 authentication is used in conjunction with a RADIUS server that must be present on your network. Enter the IP address, port, and Shared Secret that you RADIUS is configured for. You also have the option to enter information for a second RADIUS server in the event that there are two on your network which you are using to authenticate wireless clients.

WPA2-Auto
This option allows the DIR-685 to have both WPA2 and WPA clients connected to it simultaneously.

LAN Setup for Guest Zone
These are the settings of the Guest Zone LAN (Local Area Network) interface for the device. These settings may be referred to as "private settings". You may change the IP address if needed. The IP address is private to your internal network and cannot be seen on the Internet. The default IP address is 192.168.1.1 with a subnet mask of 255.255.255.0.

IP Address - IP address of the DIR-685, default is 192.168.1.1.
Subnet Mask - Subnet Mask of DIR-685, default is 255.255.255.0.

Enable Guest Zone Client Isolation :
Enable the function to prevent one guest client to access other clients in the Guest Zone. The guest client can access to the Internet only.

Enable Routing Between Zones :
Use this section to enable routing between Host Zone and Guest Zone, Guest clients can not access Host clients' data without enable the function.

DHCP Server for Guest Zone
DHCP stands for Dynamic Host Control Protocol. The DHCP server assigns IP addresses to devices on the network that request them. These devices must be set to "Obtain the IP address automatically". By default, the DHCP Server is enabled on the DIR-685. The DHCP address pool contains the range of the IP address that will automatically be assigned to the clients on the network.

Starting IP address - The starting IP address for the DHCP server's IP assignment.
Ending IP address - The ending IP address for the DHCP server's IP assignment.
Lease Time - The length of time in minutes for the IP lease. Dynamic DHCP client computers connected to the unit will have their information displayed in the Dynamic DHCP Client Table. The table will show the Host Name, IP Address, MAC Address, and Expired Time of the DHCP lease for each client computer.

WAKE ON LAN

The Wake on LAN function can be used to remotely turn on a PC connected to the LAN side of the router. Specify the UDP port that will be used by the Wake on LAN magic packet to prevent the router from thinking the Wake on LAN request is a hostile attack and blocking it.

UDP Port - This is the unique port that the DIR-685 will use to listen for the magic packets that will turn on the PC.
Interface - (This setting can't currently be changed. It may be possible to change this setting in later firmware releases).

WIRELESS

Copyright © 2004-2007 D-Link Systems, Inc.

Internet 100%

D-LINK SYSTEMS, INC | WIRELESS ROUTER | HOME - Windows Internet Explorer

http://192.168.0.1/spt_nas.php

Product Page : DIR-685 Hardware Version : A1 Firmware Version : 1.00

D-Link

DIR-685	SETUP	ADVANCED	STORAGE	TOOLS	STATUS	SUPPORT
----------------	--------------	-----------------	----------------	--------------	---------------	----------------

Menu

Setup

Advanced

Storage

Tools

Status

STORAGE

- [Disk Management](#)
- [Users/Groups](#)
- [Storage Access](#)
- [FTP Server](#)
- [UPnP AV Server](#)
- [iTunes Server](#)
- [BT Download Manager](#)

DISK MANAGEMENT

The Disk Management page contains information and settings for the local hard drive that is currently installed in the device.

Hard Disk Information - This contains details about the hard drive installed in the device.

Format Setting - This button allows you to format the hard drive that is currently installed in the device.
WARNING: This action will wipe the hard drive clean. All data on the hard drive will be lost!

Hard Drive Setting - Once this setting is enabled the hard drive will go into standby mode after the amount of minutes specified, if no data has been written to or read from the hard drive, to reduce power consumption.

USERS/GROUPS

Users

Users can be created here. These accounts can be added to rules in the Network Access and FTP Server sections. Each user created will also have access to the Scheduled Download section.

User name - Enter user name.
Password - Enter password.
Confirm Password - Enter password again. Click 'Save Settings' to add the user.

The created users will appear in a list near the bottom of this page along with their assigned group (if any). User's passwords can be edited by clicking on the 'notepad with pencil' icon or users can be deleted by clicking on the 'trashcan' icon to the right of the rule.

Groups

Groups can be created here. Once a group has been created, it will be available in the Group selection on the Users page.

The created groups will appear in a list near the bottom of this page. Users within these groups will also be displayed.

STORAGE ACCESS

Category - Select either User or Group.
User or Group - Select a user or group from the pull down list. Select 'All Accounts' if you wish to create a rule that applies to all users.
Folder - Click "Browse" to select a folder. This folder must be located on the internal drives.
Permission - Assign "Read Only" or "Read / Write" permissions to the selected folder for the selected user or group.
Oplocks - Opportunistic locks (oplocks) are a characteristic of the LAN Manager networking protocol implemented in the

Internet 100%

D-LINK SYSTEMS, INC | WIRELESS ROUTER | HOME - Windows Internet Explorer

http://192.168.0.1/spt_nas.php

D-LINK SYSTEMS, INC | WIRELESS ROUTER | HOME

32-Bit Windows family of operating system environments. Oplocks are guarantees made by a server for a shared logical volume to its clients. These guarantees inform the Client that a file's content will not be allowed to be changed by the server, or if some change is imminent, the client will be notified before the change is allowed to proceed. Oplocks are designed to increase network performance when it comes to network file sharing however when using file-based database applications it is recommended to set the share oplocks to **No(off)**.

What operating systems are affected by Oplocks?

By default Vista has Oplocks enabled and can not be disabled. If you are having network performance issues with applications sharing files from the DIR-685 you may try to improve performance by setting Oplocks to **No(off)**.

Map Archive - When enabled, the file attribute--"Archive" will be copied as the file is being stored on the DIR-685. Certain backup softwares attach this attribute to files that are being stored as backups.

Comment - Additional comments about this rule. This is optional and has no functional effect.

Click 'Save Settings' to save the rule. All saved rules will appear in the list near the bottom of this page. Rules can be edited or deleted by clicking on the 'notepad with pencil' or 'trashcan' icon to the right of the rule.

FTP SERVER

Category - Select either user or group.

User - Select a user or group from the pull down list. Select 'All Accounts' if you wish to create a rule that applies to everyone. Anonymous will always be listed as a user.

Folder - Click "Browse" to select a folder and assign this folder to the selected user. This folder must be located on the internal drives. If you wish to assign access to the root of all drives simultaneously, put a check in the 'root' box.

Permission - Assign "Read Only" or "Read / Write" permissions to the selected folder for the selected user or group. Click 'Add' to add the rule to the list. All saved rules will appear in the list near the bottom of this page. Rules can be edited or deleted by clicking on the 'notepad with pencil' or 'trashcan' icons to the right of the rule.

Max User - Enter the maximum number of users that will be allowed to access the FTP server at one time. The default value is 10.

Idle Time - The FTP server will log a user out if he exceeds the specified idle time.

Port - If you wish to change the port that the FTP server uses, enter in the new number here. This is an advanced setting and a change can cause complications when behind a router. It is recommended to leave this at the default of 21 unless you have experience with changing the FTP port.

Flow Control - This function will adjust the data flow through the FTP server. If you set a limit here, users may download from the FTP server at a slower speed, however, you will conserve local bandwidth.

Client Language - Most standard FTP clients like Windows FTP, only support Western European codepage when transferring files. Northern European, Central European, Traditional and Simplified Chinese as well as Cyrillic codepage support has been added for non standard FTP clients that are capable of supporting these character sets.

Click 'Save Settings' when finished.

UPNP AV SERVER

The DIR-685 has a built-in UPnPAV media server that can be used with UPnP AV compatible media players.

UPnP AV Server - Enable or Disable the UPnP AV Server.

Folder - Click 'Browse' to locate the root folder of your media files (music, photos, and video). Root can be chosen if you want to have access to all content on the DIR-685.

Auto Refresh - Configure auto refresh to automatically update your shared UPNP AV data every 5, 15 or 30 minutes or from 1,2,6,12 or 24hour intervals.

Click 'Save Settings' when finished.

ITUNES SERVER

The iTunes server will allow iTunes software to automatically detect and play music from the DIR-685.

iTunes Server - Enable or Disable the iTunes Server.

Folder - Uncheck root, then click 'Browse' to locate the folder which contains your music files. Root can be chosen if you want to have access to all folders of the DIR-685.

Auto Refresh - Configure auto refresh to automatically update your shared iTunes Library data every 5, 15 or 30 minutes

Internet 100%

or from 1,2,6,12 or 24hour intervals.

Click 'Save Settings' when finished.

BT DOWNLOAD MANAGER

The BT Download Manager page contains settings to set up your device so that Bit Torrent files can be downloaded from the Internet, without having to turn on your PC.

BT Setting - This allows you to turn on/off the BT Download Manager service. The directory path allows you to indicate which directory/folder you would like to save your downloaded files to. All downloads will be stored in the indicated directory, with all completed items stored in a directory named "completed" and all on-going items stored in a directory named "incomplete". File organization for each download will remain exactly the same as the original downloaded files.

Torrent Downloads - In the BT Download Manager screen you are allowed to choose whether to add new download items through a URL or from an individual BT seed file.

All items that are downloading will be listed at the bottom of the window, showing one download per row, so you can clearly view and control each item that is downloading.

Table of downloading items - For each item that is downloading, click the "more details" link to view further information about the current downloads.

Stop - Users can use this button to stop/halt the download process, allowing other items that are downloading to have more bandwidth.

Remove - Users can use the button on the right-hand side of each item that is downloading to cancel/delete the item being downloaded, if a mistake has been made.

If the deleted item has already completed, only the entry will be deleted, but the files that have already been downloaded will be kept under the "completed" directory.

Remove Completed - This button at the top right corner of the downloading item table allows users to remove all the finished download items from the table, without deleting the downloaded files.

D-LINK SYSTEMS, INC | WIRELESS ROUTER | HOME - Windows Internet Explorer

http://192.168.0.1/spt_tools.php

Product Page : DIR-685 Hardware Version : A1 Firmware Version : 1.00

D-Link

DIR-685	SETUP	ADVANCED	STORAGE	TOOLS	STATUS	SUPPORT
----------------	--------------	-----------------	----------------	--------------	---------------	----------------

Menu
Setup
Advanced
Storage
Tools
Status

TOOLS

- [Admin](#)
- [Time](#)
- [Log Settings](#)
- [Email Settings](#)
- [System](#)
- [Firmware](#)
- [Dynamic DNS](#)
- [System Check](#)
- [Schedules](#)

ADMIN

Administrator Login Name - Enter the name that will be used to login to the router with Admin access.

Administrator password - Enter and confirm the password that the **admin** account will use to access the router's management interface.

Remote Management
Remote Management allows the device to be configured through the WAN (Wide Area Network) port from the Internet using a web browser. A username and password is still required to access the router's management interface.

IP Allowed to Access - This option allows users to specify a particular IP address from the Internet to be allowed to access the router remotely. This field is 0.0.0.0 by default which means any IP address from the Internet can access the router remotely once remote management is enabled.

Port - Select the port which will be used to access the DIR-685.

Example:
<http://x.x.x.x:8080> whereas x.x.x.x is the WAN IP address of the DIR-685 and 8080 is the port used for the Web-Management interface.

TIME

The Time Configuration settings are used by the router for synchronizing scheduled services and system logging activities. You will need to set the time zone corresponding to your location. The time can be set manually or the device can connect to a NTP (Network Time Protocol) server to retrieve the time. You may also set Daylight Saving Time dates, which will automatically adjust the system time on the specified dates.

Time Zone - Select the Time Zone for the region you are in.

Daylight Saving - If the region you are in observes Daylight Savings Time, enable this option.

Automatic Time Configuration - Select a D-Link time server which you would like the DIR-685 to synchronize its time with. The interval at which the DIR-685 will communicate with the D-Link NTP server is set to 7 days.

Set the Date and Time Manually - Select this option if you would like to specify the time manually. You must specify the Year, Month, Day, Hour, Minute, and Second, or you can click the Copy Your Computer's Time Settings button to copy the system time from the computer being used to access the management interface.

LOG SETTINGS

Internet 100%

D-LINK SYSTEMS, INC | WIRELESS ROUTER | HOME - Windows Internet Explorer

http://192.168.0.1/spt_tools.php

D-LINK SYSTEMS, INC | WIRELESS ROUTER | HOME

LOG SETTINGS

You can save the log file to a local drive which can later be used to send to a network administrator for troubleshooting.
Save - Click this button to save the log entries to a text file.
Log Type - Select the type of information you would like the DIR-685 to log.

EMAIL SETTINGS

The Email Settings allows you to send the Device Log file to a specified email address.

From Email Address - The email address which the email will be sent from. Most modern SMTP services require this to be a valid email address and will carry out tests to see if it is genuine.
To Email Address - The email address that the Device Log file will be sent to. The log file will be seen by the person accessing this email account.
Email Subject - The title of the email.
SMTP Server Address - The IP address or Domain Name of the mail server that will forward the device log file to the required email account.
SMTP Server Port - The port that the mail server will use.
Enable Authentication - For security reasons some SMTP servers check the account name and password to confirm that the email it is processing is from one of its clients.
Account Name - The account name used for authentication with the SMTP Server.
Password - The password of the account used for authentication with the SMTP Server.

SYSTEM

The current system settings can be saved as a file onto the local hard drive. The saved file or any other saved setting file created by device can be uploaded into the unit. To reload a system settings file, click on **Browse** to search the local hard drive for the file to be used. The device can also be reset back to factory default settings by clicking on **Restore Device**. Use the restore feature only if necessary. This will erase previously save settings for the unit. Make sure to save your system settings before carrying out a factory restore.

Save - Click this button to save the configuration file from the router.
Browse - Click Browse to locate a saved configuration file and then click to Load and apply the saved settings to the router.
Restore Device - Click this button to restore the router to its factory default settings.

FIRMWARE

You can upgrade the firmware of the device using this tool. Make sure that the firmware you want to use is saved on the local hard drive of the computer. Click on **Browse** to search the local hard drive for the firmware to be used for the update. Upgrading the firmware will not change any of your system settings but it is recommended that you save your system settings before carrying out a firmware upgrade. Please check the D-Link [support site](#) for firmware updates or you can click on the **Check Now** button to have the router check the new firmware automatically.

DYNAMIC DNS

Dynamic DNS (Domain Name Service) is a method of keeping a domain name linked to a changing (dynamic) IP address. With most Cable and DSL connections, you are assigned a dynamic IP address and that address is used only for the duration of that specific connection. With the DIR-685, you can setup your DDNS service and the DIR-685 will automatically update your DDNS server every time it receives a new WAN IP address.

Server Address - Choose your DDNS provider from the drop down menu.
Host Name - Enter the Host Name that you registered with your DDNS service provider.
Username - Enter the username for your DDNS account.
Password - Enter the password for your DDNS account.

SYSTEM CHECK

This tool can be used to verify physical connectivity on both the LAN and Internet (WAN) interfaces. This is an advanced feature that integrates a LAN cable tester on every Ethernet port on the router. Through the graphical user interface (GUI), a Cable Test can be carried out to remotely diagnose and report cable faults such as open circuits, short circuits, swapped pairs, and impedance mismatch. This feature significantly reduces service calls and returns by allowing users to easily troubleshoot their cable connections.

Internet 100%

easily troubleshoot their cable connections.

Ping Test

This useful diagnostic utility can be used to check if a computer is on the Internet. It sends ping packets and listens for replies from the specific host. Enter in a host name or the IP address that you want to ping (Packet Internet Groper) and click **Ping** . The status of your Ping attempt will be displayed in the Ping Result box.

SCHEDULES

This page is used to configure global schedules for the router. Once defined, these schedules can later be applied to the features of the router that support scheduling.

Name - The name of the schedule being defined.

Day(s) - Select a day, range of days, or select the All Week checkbox to have this schedule .apply every day.

All Day - 24 hrs - Check this box to have the schedule active the entire 24 hours on the days specified.

Start Time - Select the time at which you would like the schedule being defined to become active.

End Time - Select the time at which you would like the schedule being defined to become inactive.

Schedule Rules List - This displays all the schedules that have been defined.

WIRELESS

Copyright © 2004-2007 D-Link Systems, Inc.

Internet

100%

D-LINK SYSTEMS, INC | WIRELESS ROUTER | HOME - Windows Internet Explorer

http://192.168.0.1/spt_st.php

Product Page : DIR-685 Hardware Version : A1 Firmware Version : 1.00

D-Link

DIR-685	SETUP	ADVANCED	STORAGE	TOOLS	STATUS	SUPPORT
---------	-------	----------	---------	-------	--------	---------

Menu

Setup

Advanced

Storage

Tools

Status

STATUS

- [Device Info](#)
- [Log](#)
- [Statistics](#)
- [Internet Session](#)
- [Wireless](#)

DEVICE INFO

This page displays current information for the DIR-685. The page will show the version of firmware currently loaded on the device.

LAN (Local Area Network) - This displays the MAC Address of the Ethernet LAN interface, the IP Address and Subnet Mask of the LAN interface, and whether or not the router's built-in DHCP server is Enabled or Disabled.

WAN (Wide Area Network) - This displays the MAC Address of the WAN interface, as well as the IP Address, Subnet Mask, Default Gateway, and DNS server information that the DIR-685 has obtained from your ISP. It will also display the connection type (Dynamic, Static, or PPPoE) that is used to establish a connection with your ISP. If the router is configured for Dynamic, then there will be buttons for releasing and renewing the IP Address assigned to the WAN interface. If the router is configured for PPPoE, there will be buttons for connecting and disconnecting the PPPoE session.

Wireless 802.11 n - This displays the SSID, Channel, and whether or not Encryption is enabled on the Wireless interface.

LOG

The DIR-685 keeps a running log of events and activities occurring on it at all times. The log will display up to 400 recent logs. Newer log activities will overwrite the older logs.

First Page - Click this button to go to the first page of the log.

Last Page - Click this button to go to the last page of the log.

Previous - Moves back one log page.

Next - Moves forward one log page.

Clear - Clears the logs completely.

STATISTICS

The DIR-685 keeps statistic of the data traffic that it handles. You are able to view the amount of packets that the router has Received and Transmitted on the Internet (WAN), LAN, and Wireless interfaces.

Refresh - Click this button to update the counters.

Reset - Click this button to clear the counters. The traffic counter will reset when the device is rebooted.

INTERNET SESSION

Internet Session display Source and Destination packets passing through the DIR-685.

IP Address - The source IP address of where the packets are originated from.

TCP Session - This shows the number of TCP packets are being sent from the source IP address.

UDP Session - This shows the number of UDP packets are being sent from the source IP address.

Protocol - This is the type of packets transmitted between the source and destination IP.

Source IP - This shows the IP address of where the packets are originated from.

Source Port - This shows the port being used to transmit packets to the Dest IP.

Done Internet 100%

Source IP - This shows the IP address of where the packets are originated from.
Source Port - This shows the port being used to transmit packets to the Dest IP.
Dest IP - This shows the IP address of where the packets are destined to.
Dest Port - This shows the port being used to receive packets from the source IP.

WIRELESS

Use this page in order to view how many wireless clients have associated with the DIR-685. This page shows the MAC address of each associated client, how long they have been associated, and the mode they are connecting in (802.11b, 802.11g or 802.11n).

WIRELESS

Copyright © 2004-2007 D-Link Systems, Inc.

Internet

100%

BITTORRENT CLIENT:

The screenshot displays the BT Download Manager interface on a D-Link wireless router. The browser window title is "D-LINK SYSTEMS, INC | WIRELESS ROUTER | HOME - Mozilla Firefox". The interface includes a sidebar with navigation options: Disk Management, Users/Groups, Storage Access, FTP Server, UPnP AV Server, iTunes Server, and BT Download Manager. The main content area is divided into sections:

- BT DOWNLOAD MANAGER:** A header section with the instruction "Use this section to configure BT manager."
- BT SETTING:** A configuration section with "Enable BT" checked, a "Share Path" field containing "HD_ST9160314A5/BT", and "Browse" and "Save Settings" buttons.
- Torrent Downloads:** A section with "Downloads | Settings" tabs. It features a "Total Speeds" box showing "Downloads: 1008.1 KB/s" and "Uploads: 0". Below this is an "Add Torrent From URL" input field with an "Add" button, and checkboxes for "Add Torrent From URL" (checked) and "Add Torrent From File".

Two torrents are currently downloading:

- ubuntu-8.10-desktop-i386.iso:** 698.8 MB total, 59.11% completed. Details include: Remaining: 285.7 MB, Downloaded: 413.1 MB, Uploaded: 0 bytes, Seeds: 49 (350), Peers: 50 (362), Ratio: 0, Download Speed: 566.7 kB/s, Upload Speed: 0, Availability: 49.573. Files: ubuntu-8.10-desktop-i386.iso.
- livecd-i686-installer-2008.0-r1:** 688.5 MB total, 100% completed. Details include: Remaining: 0 bytes, Downloaded: 688.5 MB, Uploaded: 0 bytes, Seeds: 0 (200), Peers: 0 (0), Ratio: 0, Download Speed: 44.4 kB/s, Upload Speed: 0, Availability: 0. Files: livecd-i686-installer-2008.0-r1.

Each torrent entry includes a "Stop" button, a progress bar, a "Remove" button, and a "Less Details" link. A "Remove Completed" button is also present at the top right of the torrent list.

D-LINK SYSTEMS, INC | WIRELESS ROUTER | HOME - Mozilla Firefox

File Edit View History Bookmarks Tools Help

BT DOWNLOAD MANAGER

Use this section to configure BT manager.

BT SETTING

Enable BT :

Share Path :

Settings Downloads | Settings

Settings Help

Port Settings:

Default (6881)

Custom

Incoming connections port:

Bandwidth Management:

Automatic

Manual

Maximum download rate (kB/s): default: -1 (unlimited)

Maximum upload rate (kB/s): default: -1 (unlimited)

Max. upload rate when seeding (kB/s): default: -1 (unlimited)

Seeding:

Seed until removed

Stop seeding when ratio reaches %

Stop seeding after minutes

Settings Help

Done

Enable BT :

Share Path :

Seeding:

Seed until removed

Stop seeding when ratio reaches %

Stop seeding after minutes

Settings Help

Help with Port Settings

This setting is used to change the port where BitTorrent listens for incoming connections. If you are behind a router with network address translation (NAT), BitTorrent will attempt to configure your router's port mappings via UPnP or NAT-PMP. If your router is not capable of mapping ports automatically, you may need to configure port forwarding manually on your router. If your device has a public IP address (i.e. is not subject to NAT), you may need to change this setting if the default port is blocked by a firewall.

[Back to Port Settings](#)

Help with Bandwidth Management

When set to "Automatic", BitTorrent automatically moderates its use of your Internet connection to avoid disrupting other applications and users. To impose a strict cap on BitTorrent's use of your connection, you may manually set the maximum rates at which BitTorrent will download, upload, and seed.

[Back to Bandwidth Management](#)

Help with Seeding

By default BitTorrent will seed a fully-downloaded torrent until you remove it. There are two alternative seeding policies that you may set. Seeding can be stopped automatically when the ratio of uploaded to download bytes reaches a threshold that you set. Or, seeding can be stopped automatically after a set number of minutes.

[Back to Seeding](#)

WIRELESS