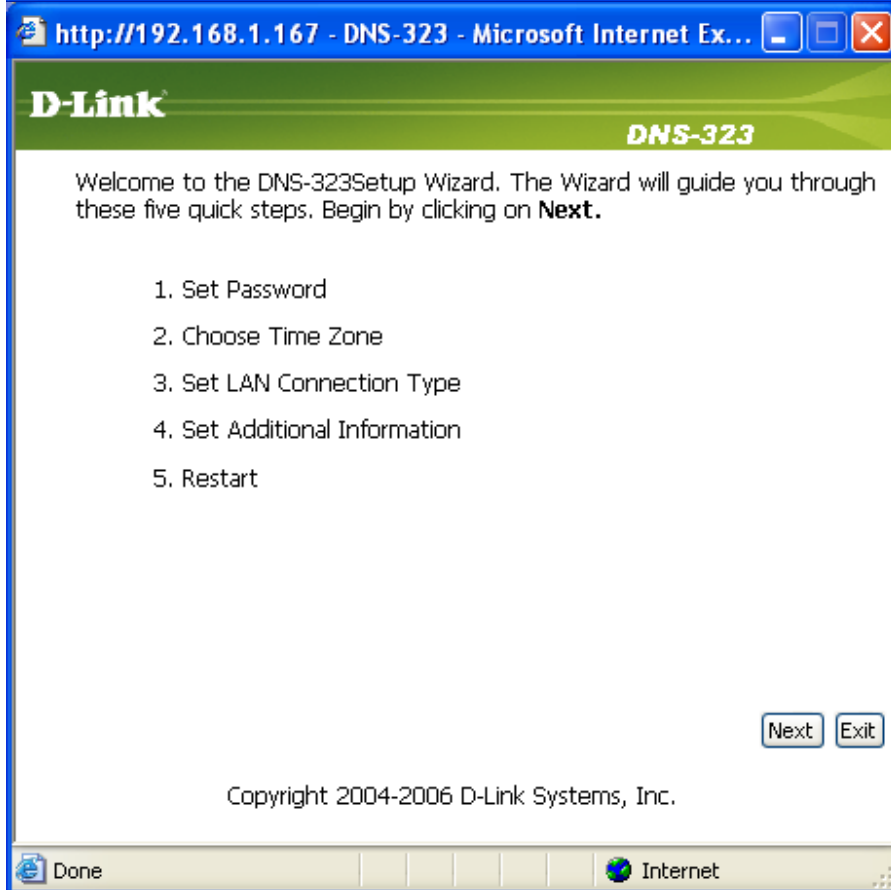
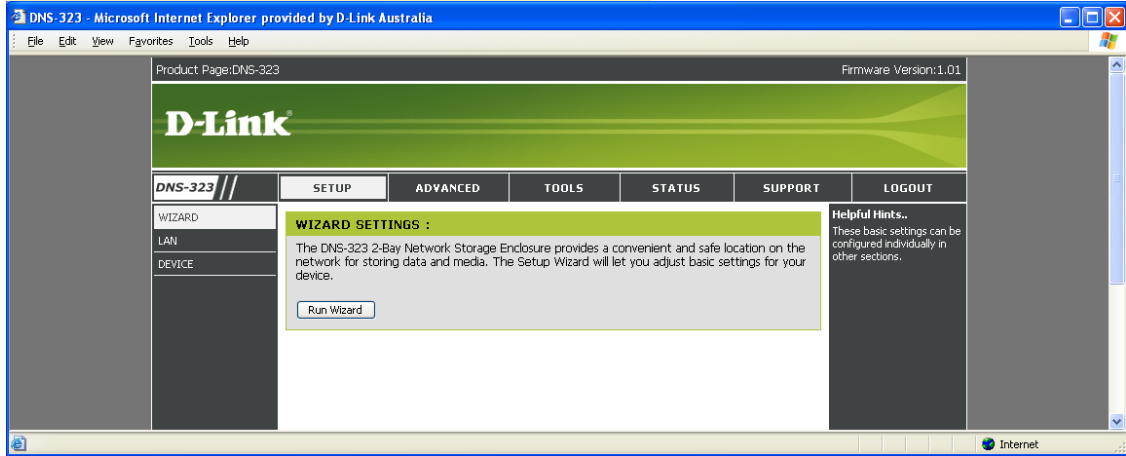


DNS-323 Firmware 1.02

WARNING :

No Hard drives were detected. Please verify that the hard drives are properly connected before continuing.



http://192.168.1.167 - DNS-323 - Microsoft Internet Ex...

D-Link *DNS-323*

SET PASSWORD:

You may change the **admin** account password by entering in a new password. Click **Next** to continue.

New Password

Confirm Password

Back Next Exit

Done Internet

http://192.168.1.167 - DNS-323 - Microsoft Internet Ex...

D-Link *DNS-323*

CHOOSE TIME ZONE:

Select the appropriate time zone for your location and click **Next** to continue.

(GMT+10:00) Sydney

Back Next Exit

Done Internet

http://192.168.1.167 - DNS-323 - Microsoft Internet Ex...

D-Link *DNS-323*

SELECT LAN CONNECTION TYPE:

Select your connection type and fill out the IP information if necessary. Click **Next** to continue.

DHCP Client
 Static IP

IP Address
Subnet Mask
Gateway IP Address
DNS1
DNS2

Done Internet

http://192.168.1.167 - DNS-323 - Microsoft Internet Ex...

D-Link *DNS-323*

SET ADDITIONAL INFORMATION:

Enter your Workgroup, Name, and Description for the DNS-323 if necessary. Otherwise you may accept the default values and click **Next** to continue.

Workgroup
Name
Description

Done Internet

http://192.168.1.167 - DNS-323 - Microsoft Internet Ex...

D-Link **DNS-323**

SETUP COMPLETED:

The Setup Wizard is complete. Click **Back** to make any changes. Click **Restart** to save the current settings and restart the DNS-323.

Back Restart Exit

Copyright 2004-2006 D-Link Systems, Inc.

Done Internet

http://192.168.1.167 - DNS-323 - Microsoft Internet Explorer provided by D-Link Australia

File Edit View Favorites Tools Help

Product Page:DNS-323 Firmware Version:1.01

D-Link

DNS-323 // SETUP ADVANCED TOOLS STATUS SUPPORT LOGOUT

ADMIN
TIME
SYSTEM
FIRMWARE
E-MAIL ALERTS
DISK UTILITIES
POWER MANAGEMENT
RAID

FIRMWARE UPGRADE :

There may be new firmware for your DNS-323 to improve functionality and performance. [Click here to check for an upgrade on our support site.](#)

To upgrade the firmware, locate the upgrade file on the local hard drive with the Browse button. Once you have found the file to be used, click the Apply button below to start the firmware upgrade.

Apply Cancel

CURRENT FIRMWARE INFO :

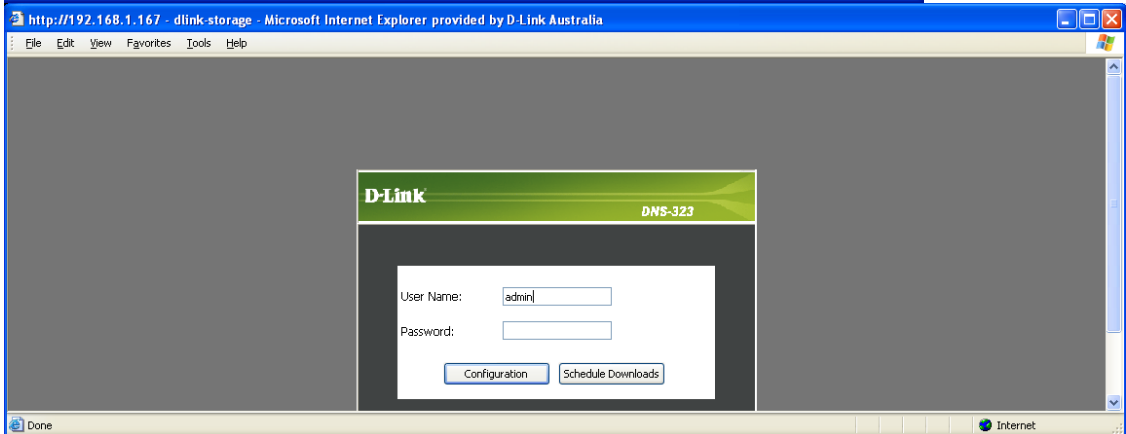
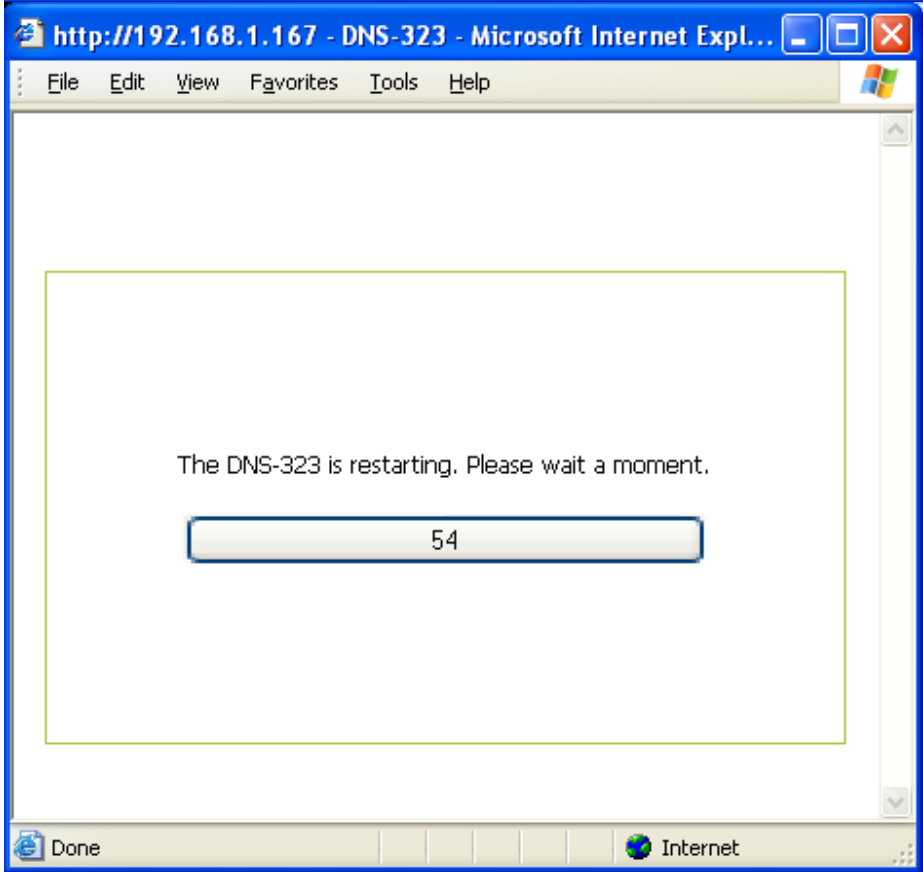
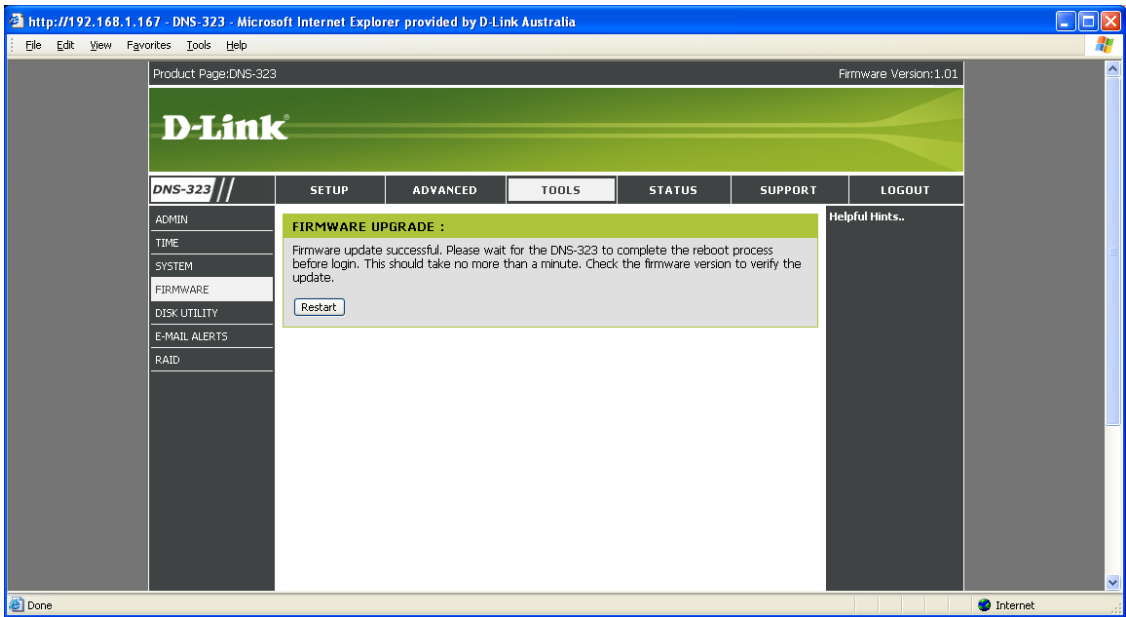
Current Firmware Version : 1.01
Firmware Date : 10/18/2006
File path : js-323\dns323_firmware_102.02 Browse...

**Warning:Firmware update is in progress.
Please don't restart or power-off the DNS-323.**

Helpful Hints..

Firmware updates are released periodically to improve the functionality of your DNS-323 and also to add features. If you run into a problem with a specific feature of the DNS-323, check our support site by clicking on the [Click here to check for an upgrade on our support site](#) link and see if an updated firmware is available for your DNS-323.

Opening page http://192.168.1.167/goform/CfgFWUpload... Internet



Product Page: DNS-323 Firmware Version: 1.02

D-Link

DNS-323 // SETUP ADVANCED TOOLS STATUS SUPPORT LOGOUT

WIZARD LAN DEVICE

LAN SETTINGS :

Select your connection type and fill out the IP information if necessary.

Save Settings Don't Save Settings

LAN SETTINGS :

Speed 1000 Mbps
 Link Speed Auto 100 1000

DHCP Client
 Static IP

IP Address :
 Subnet Mask :
 Gateway IP Address :
 DNS1 :
 DNS2 :

Helpful Hints..
 A Static IP is recommended if you will be using the FTP server.

Internet

Product Page: DNS-323 Firmware Version: 1.02

D-Link

DNS-323 // SETUP ADVANCED TOOLS STATUS SUPPORT LOGOUT

WIZARD LAN DEVICE

DEVICE SETTINGS :

Enter a workgroup, name, and description.

Save Settings Don't Save Settings

DEVICE SETTINGS :

Workgroup
 Name
 Description

Helpful Hints..
 DEVICE: You can access this device by using the name in your web-browser. For example: dlink-storage .

Done Internet

Product Page: DNS-323 Firmware Version: 1.02

D-Link

DNS-323 // SETUP ADVANCED TOOLS STATUS SUPPORT LOGOUT

USERS

USERS :
Create users and their passwords. Assign users to groups if desired.

Save Settings Don't Save Settings

CREATE A USER :

Group:

User Name:

Password:

Confirm Password:

USER LIST :

No.	User Name	Group Name	Change Password	Delete

Helpful Hints..
User passwords must be at least five characters long. A user name can not be the same as a group name.

Product Page: DNS-323 Firmware Version: 1.02

D-Link

DNS-323 // SETUP ADVANCED TOOLS STATUS SUPPORT LOGOUT

GROUPS

GROUPS :
Create new groups that users can be assigned to.

CREATE A GROUP :

Add new group: Add

GROUPS LIST :

No.	Group name	User name	Del

Helpful Hints..
Using groups will make rule creation easier if many users need the same permissions.

Product Page: DNS-323 Firmware Version: 1.02

D-Link

DNS-323 // SETUP ADVANCED TOOLS STATUS SUPPORT LOGOUT

USERS GROUPS QUOTAS NETWORK ACCESS FTP SERVER UPnP AV SERVER iTunes SERVER DHCP SERVER

QUOTAS SETTINGS :
Assign hard drive space quotas for users or groups.

USER QUOTA SETTINGS :

No.	User Name	Used	Limit	Edit

GROUP QUOTA SETTINGS :

No.	Group Name	Used	Limit	Edit

QUOTA STATUS :
Status: Stopped

Helpful Hints..
The hard drives must be finished synchronizing before quotas can be set.

Product Page: DNS-323 Firmware Version: 1.02

D-Link

DNS-323 // SETUP ADVANCED TOOLS STATUS SUPPORT LOGOUT

USERS GROUPS QUOTAS NETWORK ACCESS FTP SERVER UPnP AV SERVER iTunes SERVER DHCP SERVER

NETWORK ACCESS SETTINGS :
Assign permissions for users and groups on the local network.

NETWORK ACCESS SETTINGS :

Category User Group

User All accounts

Folder

Permission

Comment

NETWORK ACCESS LIST :

Share	Path	User/Group	Comment	R/W
Volume_1	Volume_1	ALL		<input checked="" type="checkbox"/> <input type="checkbox"/> <input type="checkbox"/> <input type="checkbox"/>

Helpful Hints..
By default, each hard drive or volume will have an open-access rule. These rules must be deleted before user or group specific rules can be created.

Product Page: DNS-323 Firmware Version: 1.02

D-Link

DNS-323 // SETUP ADVANCED TOOLS STATUS SUPPORT LOGOUT

USERS GROUPS QUOTAS NETWORK ACCESS FTP SERVER UPnP AV SERVER iTunes SERVER DHCP SERVER

FTP SERVER SETTINGS :

Assign permissions for users and groups who will be accessing the FTP server from over the Internet.

Save Settings Don't Save Settings

FTP SERVER SETTINGS :

Category User Group

User Please select a user All accounts

Folder root Browse

Permission Read Only

Max User 05

Idle Time 2 (1~10 Minutes)

Port 21 (1~65535,Default:21)

Flow Control Unlimited x 10 KBs

FTP ACCESS LIST :

Path	User/Group	<input checked="" type="checkbox"/> Read/Write	<input type="checkbox"/> Read Only	<input type="checkbox"/> Modify Setting	<input type="checkbox"/> Delete R/W

Helpful Hints..
If your DNS-323 is connected to a router, you will need to forward port 21 (in the router configuration) to the IP address of the DNS-323. From the outside world, remember to access this FTP server by using the WAN address of your router.

http://192.168.1.167/goform/iTunesServ Internet

Product Page: DNS-323 Firmware Version: 1.02

D-Link

DNS-323 // SETUP ADVANCED TOOLS STATUS SUPPORT LOGOUT

USERS GROUPS QUOTAS NETWORK ACCESS FTP SERVER UPnP AV SERVER iTunes SERVER DHCP SERVER

UPnP AV SERVER SETTINGS :

Set a path to your media content.

Save Settings Don't Save Settings Refresh

UPnP AV SERVER SETTINGS :

UPnP AV Server Enable Disable

Folder root
dlink-storage_SHARE

Helpful Hints..
After adding new media content to the DNS-323, click the refresh button.

Internet

Product Page: DNS-323 Firmware Version: 1.02

D-Link

DNS-323 // SETUP ADVANCED TOOLS STATUS SUPPORT LOGOUT

USERS
GROUPS
QUOTAS
NETWORK ACCESS
FTP SERVER
UPnP AV SERVER
iTunes SERVER
DHCP SERVER

iTunes SERVER SETTINGS :
Configure iTunes server settings for streaming music directly to iTunes software.
Save Settings Don't Save Settings Refresh

iTunes SERVER SETTINGS :
iTunes Server Enable Disable
Folder root
Password
dlink-storage_SHARE

Helpful Hints..
iTunes will automatically detect the DNS-323 on the network. It will be listed on the left side of the program, below Library.

http://192.168.1.167/goform/dhcp

Product Page: DNS-323 Firmware Version: 1.02

D-Link

DNS-323 // SETUP ADVANCED TOOLS STATUS SUPPORT LOGOUT

USERS
GROUPS
QUOTAS
NETWORK ACCESS
FTP SERVER
UPnP AV SERVER
iTunes SERVER
DHCP SERVER

DHCP SERVER SETTINGS :
Enable the DHCP server to distribute IP addresses on the network.
Save Settings Don't Save Settings Refresh

DHCP SERVER :
DHCP Server : Enabled Disabled
Starting IP Address : 192.168.0.2
Ending IP Address : 192.168.0.254
Lease Time : 1 Week

DHCP CLIENT LIST :

Host name	IP Address	MAC Address	Expired Time

Helpful Hints..
If you already have a router assigning DHCP to the network, do not enable this feature. The DHCP server should be used when no other DHCP server is available.

Done Internet

Product Page: DNS-323 Firmware Version: 1.02

D-Link

DNS-323 // SETUP ADVANCED TOOLS STATUS SUPPORT LOGOUT

ADMIN PASSWORD

ADMINISTRATOR SETTINGS :

Set the administrator's password.

Save Settings Don't Save Settings

ADMINISTRATOR :

User Name : admin

Password :

New Password :

Confirm Password :

Helpful Hints..

For security reasons, it is recommended that you change the Password for the Administrator. Be sure to write down the new Passwords to avoid having to reset the DNS-323 in the event that they are forgotten.

Product Page: DNS-323 Firmware Version: 1.02

D-Link

DNS-323 // SETUP ADVANCED TOOLS STATUS SUPPORT LOGOUT

ADMIN PASSWORD

SYSTEM TIME SETTINGS :

Set the system time by synchronizing with NTP, synchronizing with your computer, or manually entering it.

Time: 13:14:23 Date: 01/18/07

NTP SERVER :

NTP Server << Select NTP Server

Time Zone (GMT+10:00) Sydney

FROM MY COMPUTER :

Set time from my computer.

SET THE DATE AND TIME MANUALLY :

Month 01 Day 18 Year 2007

Hour 13 Minute 14 Second 17

DAYLIGHT SAVING TIME :

Daylight Saving Time : None

Helpful Hints..

Using the NTP option will guarantee the time to be accurate provided that the DNS-323 is connected to the Internet and your DNS values (in SETUP > LAN) are valid.

http://192.168.1.167 - dlink-storage - Microsoft Internet Explorer provided by D-Link Australia

Product Page: DNS-323 Firmware Version: 1.02

D-Link

DNS-323	SETUP	ADVANCED	TOOLS	STATUS	SUPPORT	LOGOUT
ADMIN PASSWORD TIME SYSTEM FIRMWARE E-MAIL ALERTS POWER MANAGEMENT RAID	SYSTEM SETTINGS : Restart the system, restore to factory defaults, save or load configuration settings, and change the idle time.					Helpful Hints.. If you restore to factory defaults, all current settings will be erased.
RESTART : System Restart. <input type="button" value="Restart"/>						
DEFAULTS : Restore To Factory Default Settings. <input type="button" value="Restore"/>						
SHUTDOWN : System shutdown. <input type="button" value="Shutdown"/>						
CONFIGURATION SETTINGS : Save Configuration Settings. <input type="button" value="Save"/> Load Configuration Settings. <input type="text"/> <input type="button" value="Browse..."/> <input type="button" value="Load"/>						
IDLE TIME : Config Inactivity Timer <input type="text" value="10"/> (Minutes) Download Schedule Inactivity Timer <input type="text" value="10"/> <input type="button" value="Apply"/> <input type="button" value="Cancel"/>						

STORAGE

Copyright 2004-2006 D-Link Systems, Inc.

Internet

Product Page: DNS-323 Firmware Version: 1.02

D-Link

DNS-323	SETUP	ADVANCED	TOOLS	STATUS	SUPPORT	LOGOUT
ADMIN PASSWORD TIME SYSTEM FIRMWARE E-MAIL ALERTS POWER MANAGEMENT RAID	<div style="border: 1px solid black; padding: 5px;"> <p>FIRMWARE UPGRADE :</p> <p>There may be new firmware for your DNS-323 to improve functionality and performance. D-Link Support Page</p> <p>To upgrade the firmware, locate the upgrade file on the local hard drive with the Browse button. Once you have found the file to be used, click the Apply button below to start the firmware upgrade.</p> <p style="text-align: center;"> <input type="button" value="Apply"/> <input type="button" value="Cancel"/> </p> </div> <div style="border: 1px solid black; padding: 5px; margin-top: 5px;"> <p>CURRENT FIRMWARE INFO :</p> <p>Current Firmware Version : 1.02</p> <p>Firmware Date : 12/08/2006</p> <p>File Path : <input type="text"/> <input type="button" value="Browse..."/></p> </div>					<p>Helpful Hints..</p> <p>Firmware updates are released periodically to improve the functionality of your DNS-323 and also to add features. If you run into a problem with a specific feature of the DNS-323, check our support site by clicking on the D-Link Support Page link and see if an updated firmware is available for your DNS-323.</p>

Product Page: DNS-323 Firmware Version: 1.02

D-Link

DNS-323	SETUP	ADVANCED	TOOLS	STATUS	SUPPORT	LOGOUT
ADMIN PASSWORD TIME SYSTEM FIRMWARE E-MAIL ALERTS POWER MANAGEMENT RAID	<div style="border: 1px solid black; padding: 5px;"> <p>E-MAIL ALERTS :</p> <p>E-mail yourself alerts for certain conditions or for drive space status updates.</p> <p style="text-align: center;"> <input type="button" value="Save Settings"/> <input type="button" value="Don't Save Settings"/> <input type="button" value="Clear Saved Settings"/> </p> </div> <div style="border: 1px solid black; padding: 5px; margin-top: 5px;"> <p>E-MAIL ALERT SETTINGS :</p> <p>Login Method : <input checked="" type="radio"/> Account <input type="radio"/> Anonymous</p> <p>User Name : <input type="text"/></p> <p>Password : <input type="text"/></p> <p>SMTP Server : <input type="text"/></p> <p>Sender E-mail : <input type="text"/></p> <p>Receiver E-mail : <input type="text"/></p> <p style="text-align: center;"><input type="button" value="Test E-Mail"/></p> </div> <div style="border: 1px solid black; padding: 5px; margin-top: 5px;"> <p>ALERT TYPES :</p> <p><input type="checkbox"/> Space Status Interval: <input type="text" value="0"/> (Hours) <input type="text" value="0"/> (Minutes)</p> <p><input type="checkbox"/> A Volume Is Full</p> <p><input type="checkbox"/> A Hard Drive Has Failed</p> <p><input type="checkbox"/> The Administrator's Password Has Been Changed</p> <p><input type="checkbox"/> Firmware Has Been Upgraded</p> <p><input type="checkbox"/> System Temperature Has Exceeded <input type="text" value="140"/> °F</p> <p>Enabling this feature will cause the DNS-323 to shut down after the selected temperature is exceeded and an e-mail is sent.</p> </div>					<p>Helpful Hints..</p> <p>The SMTP server is your outgoing mail server. If you aren't sure what this is, contact the company that provides e-mail services for you.</p>

http://192.168.1.167 - dlink-storage - Microsoft Internet Explorer provided by D-Link Australia

Product Page: DNS-323 Firmware Version: 1.02

D-Link

DNS-323 // SETUP ADVANCED **TOOLS** STATUS SUPPORT LOGOUT

ADMIN PASSWORD	<p>POWER MANAGEMENT SETTINGS :</p> <p>Enabling this feature will cause the hard drives to hibernate after the specified time of inactivity. They will wake-up when new activity is detected.</p> <p>Save Settings Don't Save Settings</p> <hr/> <p>POWER MANAGEMENT SETTINGS :</p> <p>Power Management : <input checked="" type="radio"/> Enable <input type="radio"/> Disable</p> <p>Turn off hard drives : After 5 mins</p>	<p>Helpful Hints..</p> <p>Save on electricity costs and extend the life of your hard drives by using power management.</p>
TIME		
SYSTEM		
FIRMWARE		
E-MAIL ALERTS		
POWER MANAGEMENT		
RAID		

Internet

http://192.168.1.167 - dlink-storage - Microsoft Internet Explorer provided by D-Link Australia

Product Page: DNS-323 Firmware Version: 1.02

D-Link

DNS-323 // SETUP ADVANCED **TOOLS** STATUS SUPPORT LOGOUT

ADMIN PASSWORD	<p>HARD DRIVE CONFIGURATION :</p> <p>Change the hard drive configuration. Your data will be erased during this process.</p> <hr/> <p>RAID CONFIGURATION :</p> <p>Set RAID Type and Re-Format</p>	<p>Helpful Hints..</p> <p>To see information on the current hard disk configuration, go to the STATUS page.</p>
TIME		
SYSTEM		
FIRMWARE		
E-MAIL ALERTS		
POWER MANAGEMENT		
RAID		

0 Internet

http://192.168.1.167 - dlink-storage - Microsoft Internet Explorer provided by D-Link Australia

File Edit View Favorites Tools Help

Product Page: DNS-323 Firmware Version: 1.02

D-Link

DNS-323 // SETUP ADVANCED TOOLS STATUS SUPPORT LOGOUT

DEVICE INFO

DEVICE INFORMATION :
View a summary of device information here.

LAN INFO :
IP Address: 192.168.1.167
Subnet Mask: 255.255.255.0
Gateway IP Address: 192.168.1.1
Mac Address: 00:19:5B:7D:DA:AF

DEVICE INFO :
Workgroup: DLINK
Name: dlink-storage
Description: DNS-323
System Temperature: 111 F/ 44 C

PRINTER INFO :
Manufacturer: None
Product: None

HARD DRIVE INFO :
Volume Name: Volume_1
Volume Type: RAID 1
Sync Time Remaining: Completed
Total Hard Drive Capacity: 198690 MB
Used Space: 76 KB
Unused Space: 198689 MB

Internet

-----END SCREENSHOTS-----