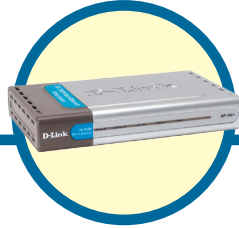


**D-Link®**

# Quick Installation Guide

This product can be setup using any current Web browser, i.e., Internet Explorer 6 or Netscape Navigator 7.0



**DP-300+**  
Fast Ethernet Multi-Port  
Print Server

## Before You Begin

You will need an Ethernet-enabled device, such as a laptop or desktop computer and a LPT printer or printer with serial port that will connect to the DP-300+.

**IMPORTANT: TURN OFF the power to the printer BEFORE installing the DP-300+**

## Check Your Package Contents




**DP-300+Fast Ethernet Multi-Port Print Server**



**CD-ROM (Software, Manual and Warranty)**



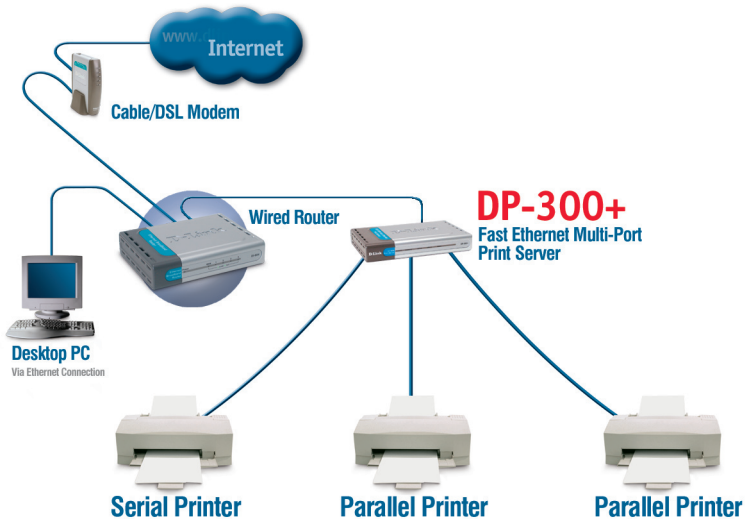
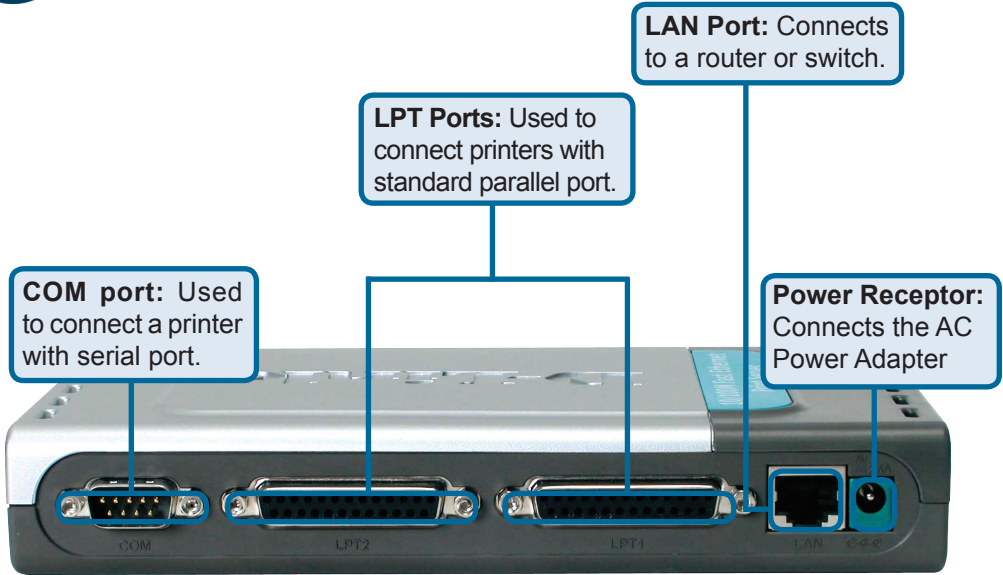
**5V DC, 2.5A Power Adapter**

 Using a power supply with a different voltage rating will damage this product and void its warranty.

If any of the above items are missing, please contact your reseller.

# 1

## Connecting the DP-300+ to Your Network



# 1

## Connecting the DP-300+ to Your Network (continued)

**Note:** Don't connect the power cord to the DP-300+ until you are advised to do so.



For Mac OS printing, please refer to manual (.pdf) located on the CD-ROM.

- A. Insert one end of a straight-through CAT5 Ethernet cable into the DP-300+'s LAN Port. Connect the other end to an Ethernet port on your gateway or switch.
- B. Make sure that your Printer is turned **OFF**.
- C. Attach one end of your printer cable to the appropriate port on the DP-300+ and the other end to the corresponding port on your printer.
- D. Turn **ON** the printer. Repeat steps B-D for each printer before proceeding to step E.
- E. Plug one end of the power adapter into the DP-300+ and the other end into your electric outlet. The DP-300+ will turn on and begin a self-test.

# 2

## Configuring the DP-300+

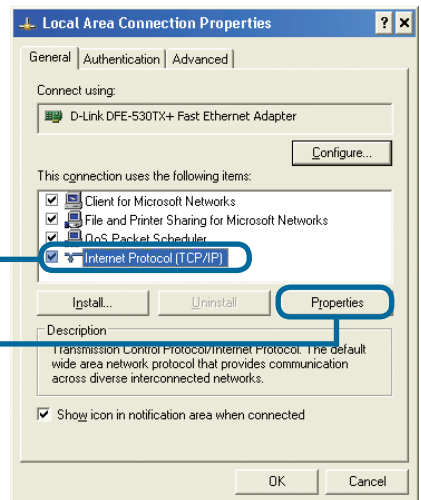
For additional Windows operating system setup or information on the Web-management interface, refer to the manual located on the CD-ROM.

The factory default IP address of the DP-300+ is **192.168.0.10**. The IP address of the DP-300+ must be in the same range as your network. You can change the IP address of the DP-300+ to match the IP address scheme of your existing network. To access the Print Server's Web configuration interface, assign an IP address on one of the wired PCs on your network to the same IP scheme as the Print Server.

Go to **Start > Right-click on My Network Places > select Properties > Right click on the Network Connection associated with your Network Adapter and select Properties.**

Click **Internet Protocol (TCP/IP)**

Click **Properties**



# 2

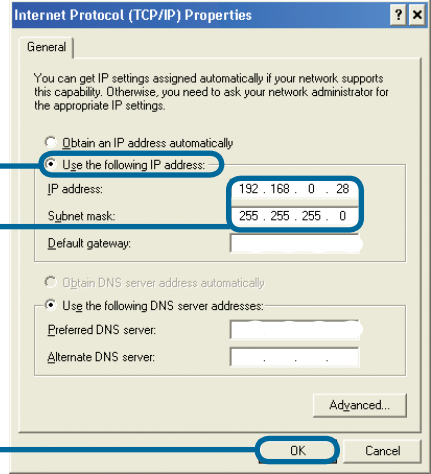
## Configuring the DP-300+ (continued)

Input a static IP address in the same range as the print server. (192.168.0.xx)

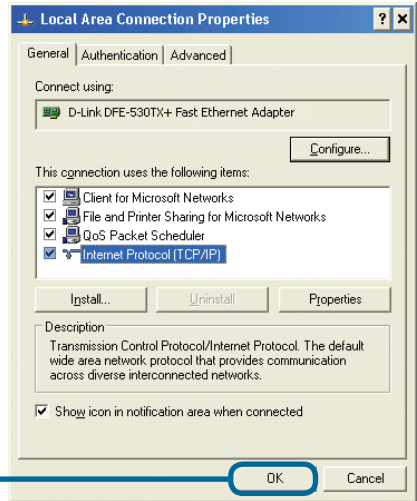
Select **Use the following IP address**

IP address: **192.168.0.28**  
Subnet mask: **255.255.255.0**

Click **OK**



Click **OK** to apply the new settings



Open your Web browser and type **http://192.168.0.10** into the URL address box. Then press the **Enter** or **Return** key.

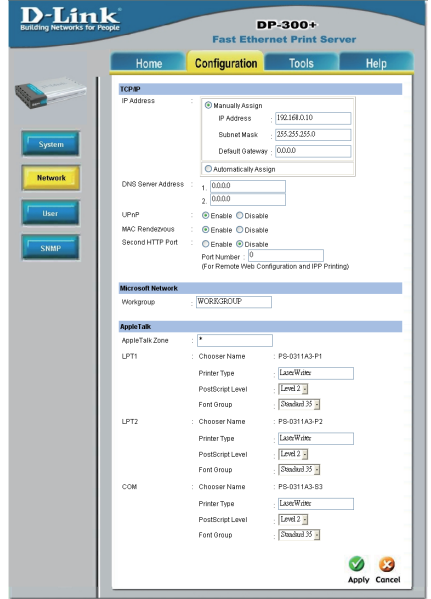


# 2

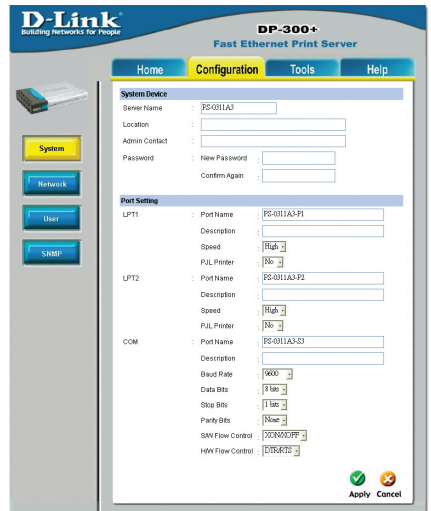
## Configuring the DP-300+ (continued)

The IP address of the DP-300+ can be modified from the **Network** option under the **Configuration** tab.

This Quick Installation Guide will use the Print Server's default IP address in all examples. Make the appropriate changes if you have modified the DP-300+'s IP address.



Select the **System** button under the **Configuration** tab to view the Print Server and Port names. If you change the names of the ports, please make note of them, as they will be needed during the Add Printer Wizard.

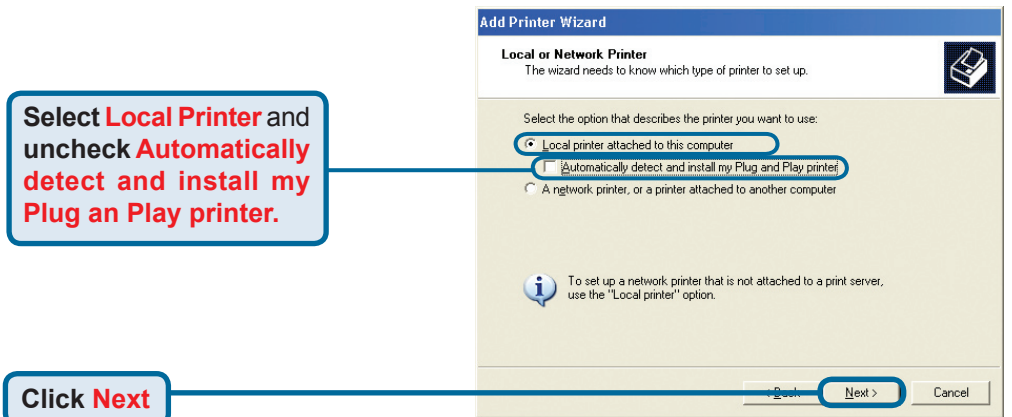
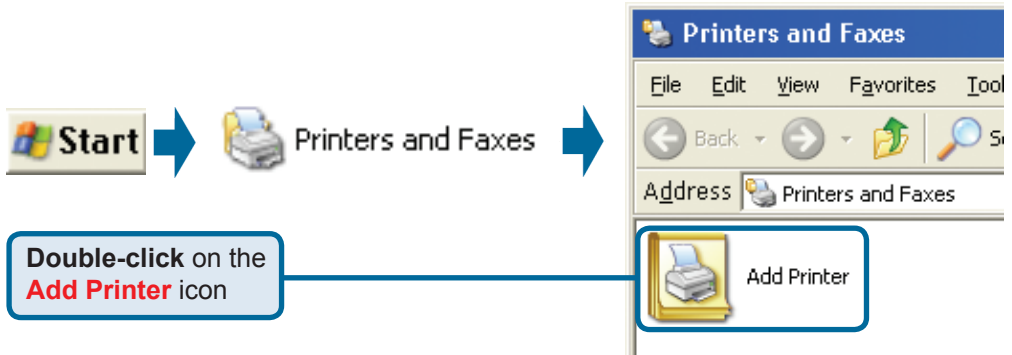


# 3

## The Add Printer Wizard

### For Windows XP:

Go to the **Start** menu > **Configuration > Printers and Faxes > Add a Printer**



# 3

## The Add Printer Wizard (continued)

**Select Create a new port** and choose **Standard TCP/IP Port** from the drop-down menu.

Click **Next**

Click **Next**

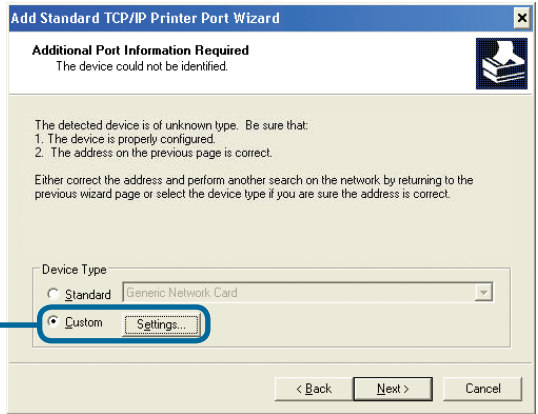
Type **192.168.0.10**

The Port Name will fill in automatically.

Click **Next**

# 3

## The Add Printer Wizard (continued)



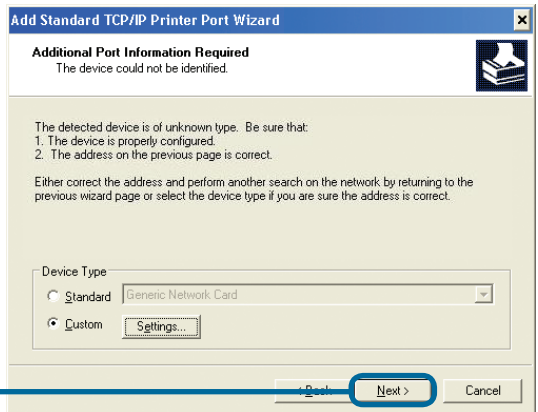
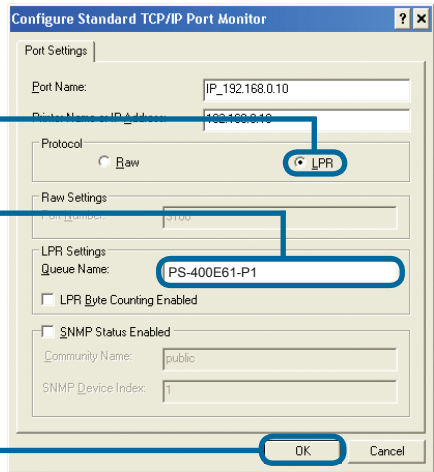
Select **Custom** and click the **Settings** button

Select **LPR**

Enter the **Port** name for the port the printer is attached to.

Default port names differ with the device MAC ID:  
**PS-xxxxxx-P1** (for LPT Port 1)  
**PS-xxxxxx-P2** (for LPT Port 2)  
**PS-xxxxxx-S3** (for COM Port)

Click **OK**

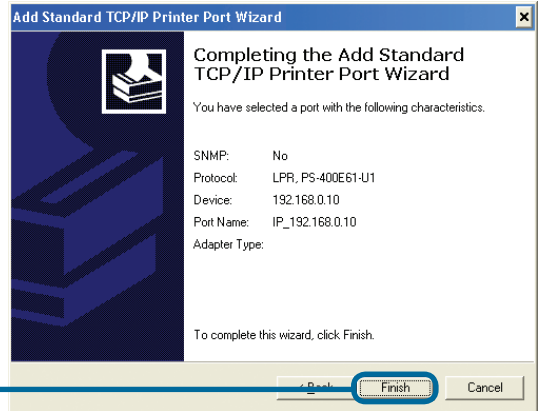


Click **Next**



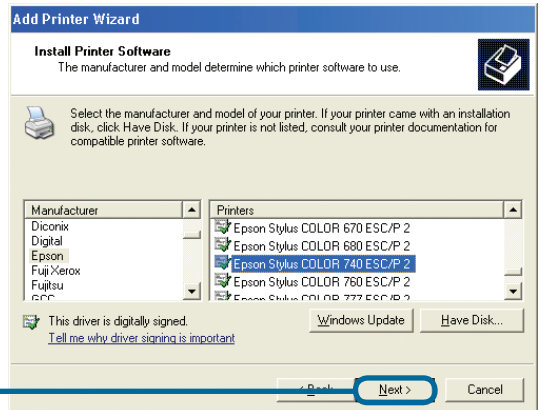
# 3

## The Add Printer Wizard (continued)



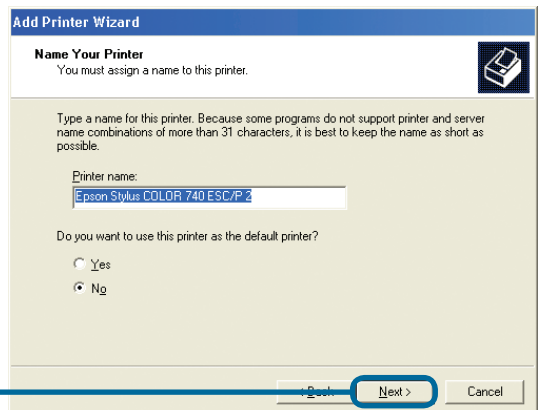
Click **Finish**

In this window, scroll down and select your printer manufacturer and model. (If it is not listed, insert the driver CD or diskette that came with your printer and click Have Disk.)



Click **Next**

The printer name and default printer settings are configured here.



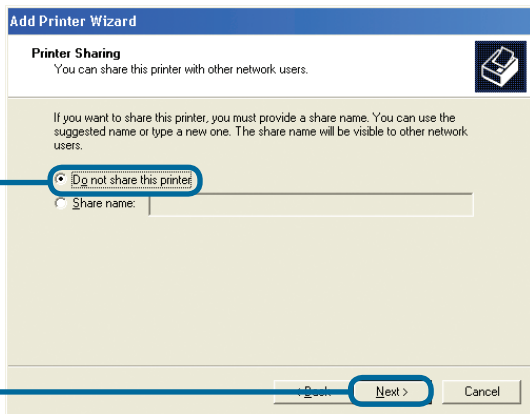
Click **Next**

# 3

## The Add Printer Wizard (continued)

By opting to not share the printer, each system will print directly to the print server.

Select **Do not share this printer**

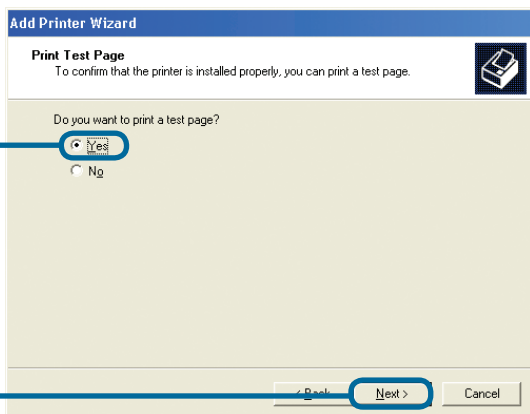


Click **Next**

Select **Yes** to print a test page

If the test page doesn't print successfully, please check the Frequently Asked Questions in the User Manual on the CD-ROM.

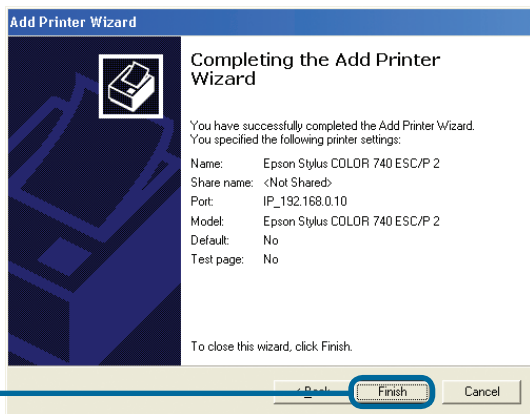
Click **Next**



Click Finish to complete the Add Printer Wizard.

Repeat the Add Printer Wizard steps for each Printer/Port and repeat the entire process on each system that will be printing.

Click **Finish**



Your Setup is now complete!

# Technical Support

You can find software updates and user documentation on the D-Link website.

## Tech Support for customers in

### Australia:

Tel: 1300-766-868

Monday to Friday 8:00am to 8:00pm EST

Saturday 9:00am to 1:00pm EST

<http://www.dlink.com.au>

e-mail: [support@dlink.com.au](mailto:support@dlink.com.au)

### India:

Tel: 1800-222-002

Monday to Friday 9:30AM to 7:00PM

<http://www.dlink.co.in/support/productsupport.aspx>

## Indonesia, Malaysia, Singapore and Thailand:

Tel: +62-21-5731610 (Indonesia)

Tel: 1800-882-880 (Malaysia)

Tel: +65 66229355 (Singapore)

Tel: +66-2-719-8978/9 (Thailand)

Monday to Friday 9:00am to 6:00pm

<http://www.dlink.com.sg/support/>

e-mail: [support@dlink.com.sg](mailto:support@dlink.com.sg)

### Korea:

Tel: +82-2-890-5496

Monday to Friday 9:00am to 6:00pm

<http://www.d-link.co.kr>

e-mail: [lee@d-link.co.kr](mailto:lee@d-link.co.kr)

### New Zealand:

Tel: 0800-900-900

Monday to Friday 8:30am to 8:30pm

Saturday 9:00am to 5:00pm

<http://www.dlink.co.nz>

e-mail: [support@dlink.co.nz](mailto:support@dlink.co.nz)

**D-Link®**  
Building Networks for People

# Technical Support

You can find software updates and user documentation on the D-Link website.

## Tech Support for customers in

### Egypt:

Tel: +202-2919035 or +202-2919047  
Sunday to Thursday 9:00am to 5:00pm  
<http://support.dlink-me.com>  
e-mail: [amostafa@dlink-me.com](mailto:amostafa@dlink-me.com)

### Iran:

Tel: +98-21-88822613  
Sunday to Thursday 9:00am to 6:00pm  
<http://support.dlink-me.com>  
e-mail: [support.ir@dlink-me.com](mailto:support.ir@dlink-me.com)

### Israel:

Tel: +972-9-9715701  
Sunday to Thursday 9:00am to 5:00pm  
<http://www.dlink.co.il/support/>  
e-mail: [support@dlink.co.il](mailto:support@dlink.co.il)

### Pakistan:

Tel: +92-21-4548158 or +92-21-4548310  
Sunday to Thursday 9:00am to 6:00pm  
<http://support.dlink-me.com>  
e-mail: [support.pk@dlink-me.com](mailto:support.pk@dlink-me.com)

## South Africa and Sub Sahara Region:

Tel: +27-12-665-2165  
08600 DLINK (for South Africa only)  
Monday to Friday 8:30am to 9:00pm South Africa Time  
<http://www.d-link.co.za>

### Turkey:

Tel: +90-212-2895659  
Monday to Friday 9:00am to 6:00pm  
<http://www.dlink.com.tr>  
e-mail: [turkiye@dlink-me.com](mailto:turkiye@dlink-me.com)  
e-mail: [support@d-link.co.za](mailto:support@d-link.co.za)

### U.A.E and North Africa:

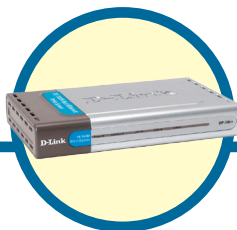
Tel: +971-4-391-6480 (U.A.E)  
Sunday to Wednesday 9:00am to 6:00pm GMT+4  
Thursday 9:00am to 1:00pm GMT+4  
<http://support.dlink-me.com>  
e-mail: [support@dlink-me.com](mailto:support@dlink-me.com)

**D-Link®**  
Building Networks for People

# D-Link®

## Руководство по быстрой установке

Это устройство может быть настроено с помощью любого Web-браузера, например Internet Explorer 6 или Netscape Navigator 7.0



### DP-300+

Многопортовый  
принт-сервер Fast Ethernet

### Прежде чем начать

Вам понадобится устройство с поддержкой сети Ethernet, например, портативный или настольный компьютер, и LPT принтер или принтер с последовательным портом, который будет подключаться к DP-300+.

**ВАЖНО: ВЫКЛЮЧИТЕ питание принтера ПЕРЕД установкой DP-300+**

### Проверьте содержимое комплекта



DP-300+ Многопортовый принт-сервер  
Fast Ethernet



CD-ROM (содержит ПО, Руководство  
пользователя и гарантию)



Адаптер питания

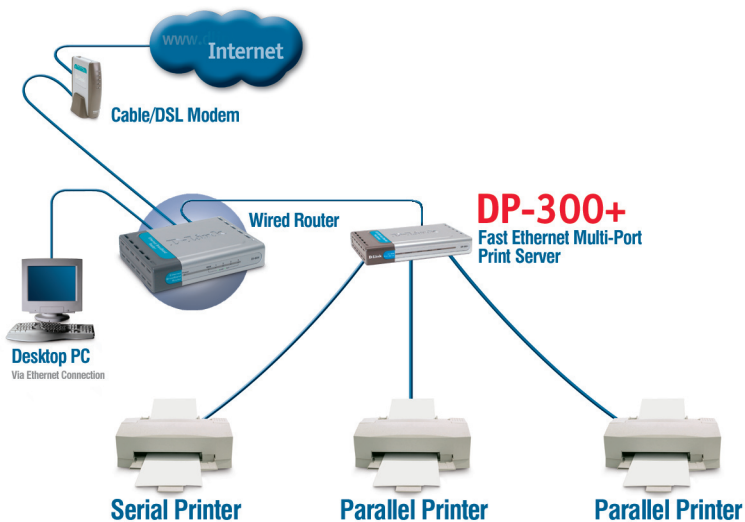
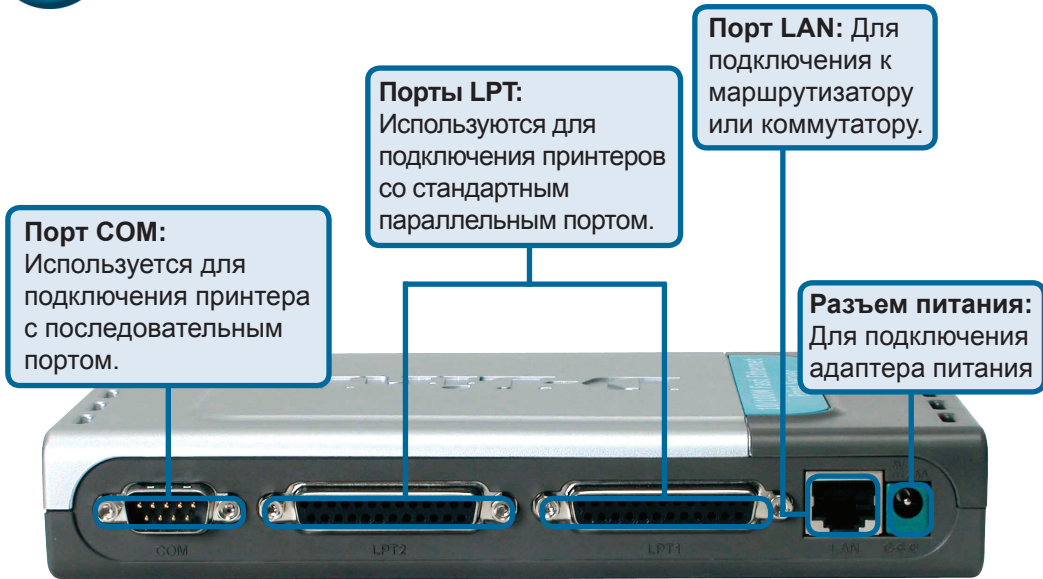


Использование источника питания с другим напряжением питания может привести к выходу из строя устройства и потере гарантии.

Если что-либо из перечисленного отсутствует, обратитесь к вашему поставщику.

# 1

## Подключение DP-300+ к сети



# 1

## Подключение DP-300+ к сети (продолжение)

**Примечание:** Не подключайте кабель питания к DP-300+, пока не получите указание сделать это.



За информацией о печати в Mac OS, пожалуйста, обращайтесь к руководству (.pdf) на CD-ROM.

- A. Подключите один конец прямого кабеля Ethernet категории 5 к порту LAN DP-300+. Подключите другой конец кабеля к порту Ethernet шлюза или коммутатора.
- B. Убедитесь, что питание принтера **ВЫКЛЮЧЕНО**.
- C. Подключите один конец принтерного кабеля к подходящему порту DP-300+, а другой конец кабеля к соответствующему порту принтера.
- D. **ВКЛЮЧИТЕ** принтер. Повторите шаги B-D для каждого подключаемого принтера, а затем переходите к шагу E.
- E. Подключите адаптер питания к DP-300+ и к розетке сети питания. DP-300+ включится и начнет самотестирование.

# 2

## Настройка DP-300+

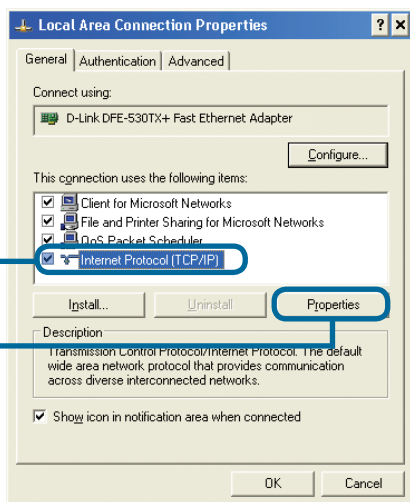
За информацией о печати в Mac OS, пожалуйста, обращайтесь к руководству (.pdf) на CD-ROM.

По умолчанию IP-адрес DP-300+ равен **192.168.0.10**. IP-адрес DP-300+ должен быть назначен из диапазона адресов Вашей сети. IP-адрес DP-300+ можно изменить в соответствии со схемой адресации существующей сети. Для получения доступа к Web-интерфейсу управления принт-сервера, назначьте IP-адрес одному из проводных ПК сети из того же диапазона, что и адрес принт-сервера.

Нажмите **Пуск** > Щелкните правой кнопкой на **Сетевое окружение** > выберите **Свойства** > Щелкните правой кнопкой на **сетевом подключении**, соответствующем вашему сетевому адаптеру, и выберите **Свойства**.

Нажмите **Протокол Интернета (TCP/IP)**

Нажмите **Свойства**



# 2

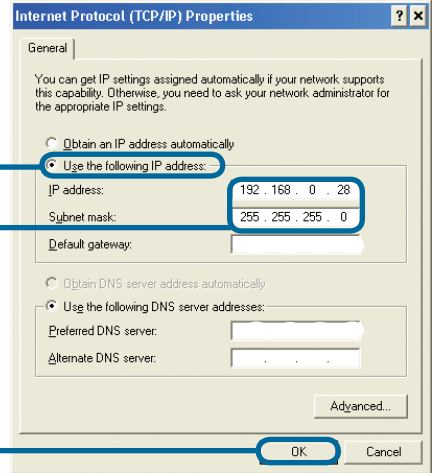
## Настройка DP-300+ (продолжение)

Введите статический IP-адрес из того же диапазона, что и адрес принт-сервера. (192.168.0.xx)

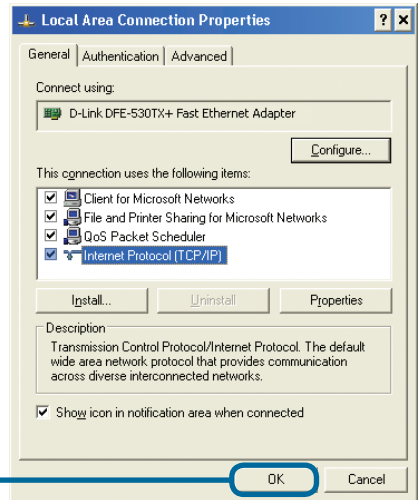
Выберите **Использовать следующий IP-адрес**

IP-адрес: **192.168.0.28**  
Маска подсети: **255.255.255.0**

Нажмите **OK**



Нажмите **OK**, чтобы новые настройки вступили в силу



Откройте Web-браузер и введите **http://192.168.0.10** в строке адреса URL. Затем нажмите **Enter** или **Return**.



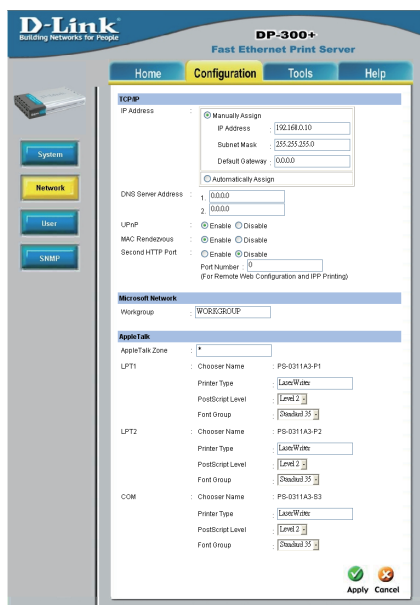


# 2

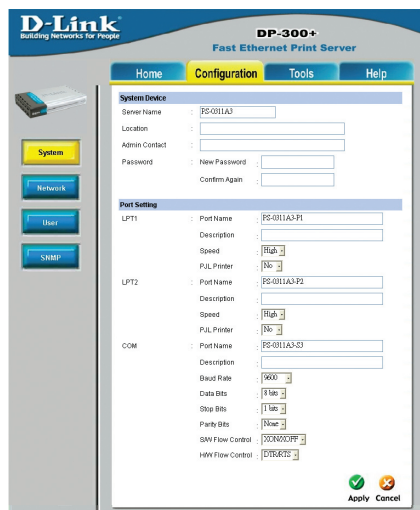
## Настройка DP-300+ (продолжение)

IP-адрес DP-300+ можно изменить в меню **Network** на вкладке **Configuration**.

Во всех примерах данного Руководства по быстрой установке используется IP-адрес принт-сервера, установленный по умолчанию. Внесите соответствующие поправки при изменении IP-адреса DP-300+.



Нажмите кнопку **System** на вкладке **Configuration**, чтобы просмотреть имена принт-сервера и портов. Если Вы изменили имена портов, то, пожалуйста, запишите их, поскольку они понадобятся для Мастера установки принтера.

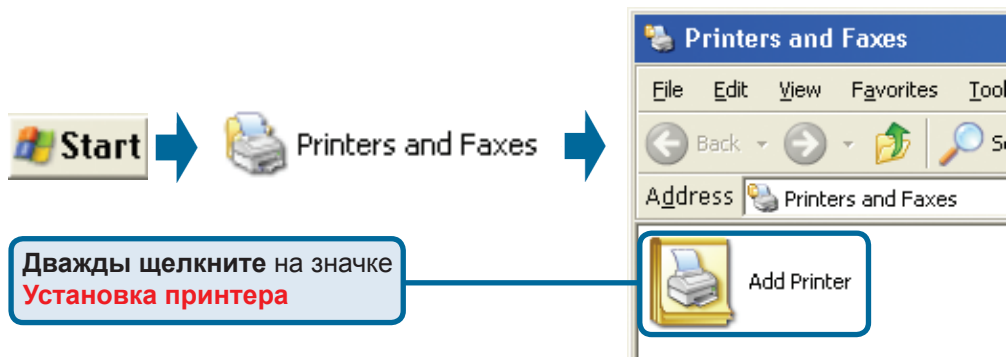


# 3

## Мастер установки принтера


Для Windows XP:

Выберите меню Пуск > Принтеры и факсы > Установка принтера



Start → Printers and Faxes → Add Printer

Дважды щелкните на значке **Установка принтера**



**Add Printer Wizard**

Welcome to the Add Printer Wizard

This wizard helps you install a printer or make printer connections.

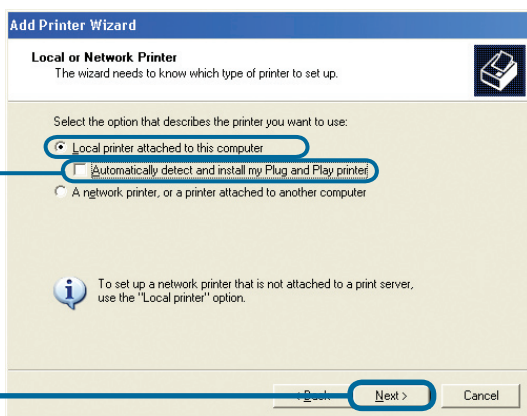
If you have a Plug and Play printer that connects through a USB port (or any other hot pluggable port, such as IEEE 1394, infrared, and so on), you do not need to use this wizard. Click Cancel to close the wizard, and then plug the printer's cable into your computer or point the printer toward your computer's infrared port, and turn the printer on. Windows will automatically install the printer for you.

To continue, click Next.

Next > Cancel

Нажмите **Далее**

Выберите **Локальный принтер** и снимите флажок **Автоматическое определение и установка принтера "Plug and Play"**.



**Add Printer Wizard**

**Local or Network Printer**

The wizard needs to know which type of printer to set up.

Select the option that describes the printer you want to use:

- Local printer attached to this computer
- Automatically detect and install my Plug and Play printer
- A network printer, or a printer attached to another computer

To set up a network printer that is not attached to a print server, use the "Local printer" option.

Next > Cancel

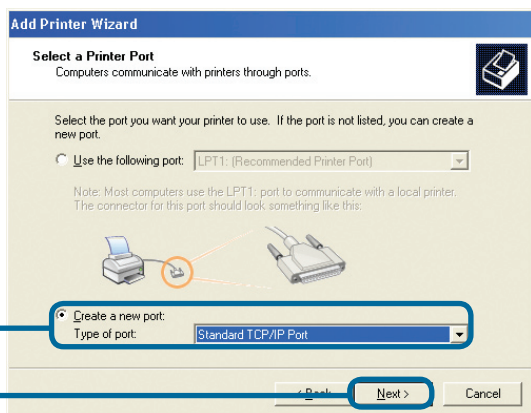
Нажмите **Далее**

# 3

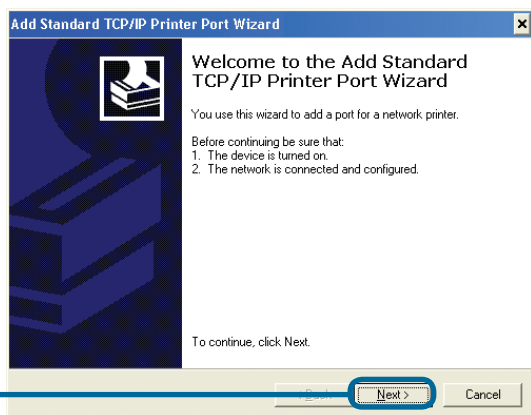
## Мастер установки принтера (продолжение)

Выберите **Создать новый порт** и выберите **Standard TCP/IP Port** из выпадающего меню.

Нажмите **Далее**



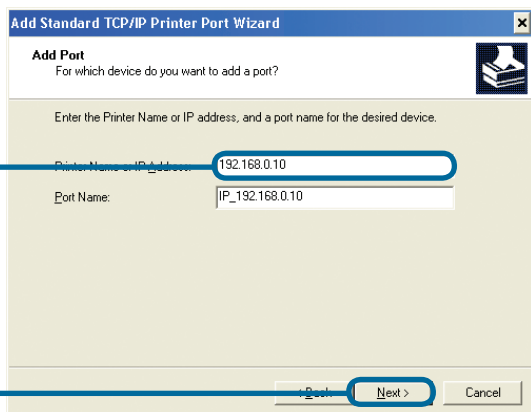
Нажмите **Далее**



Введите **192.168.0.10**

Поле Имя порта заполнится автоматически.

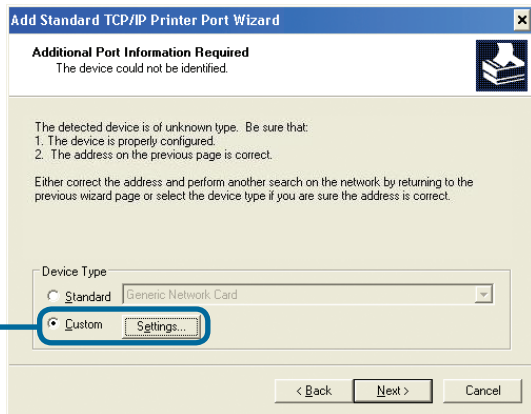
Нажмите **Далее**



# 3

## Мастер установки принтера (продолжение)

Выберите **Особое**  
и нажмите кнопку  
**Параметры**



Выберите **протокол LPR**

Введите имя **Порта**, к которому  
подключен принтер.

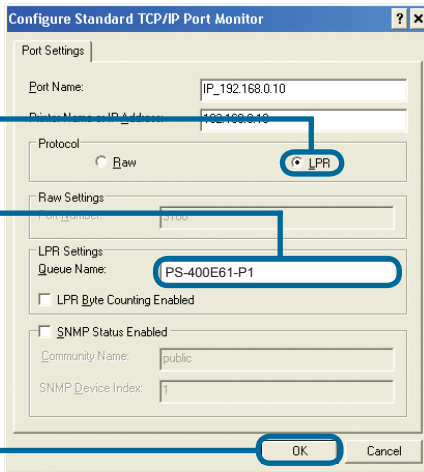
Имена портов по умолчанию различаются в зависимости от MAC ID устройства:

**PS-xxxxxx-P1** (для порта LPT 1)

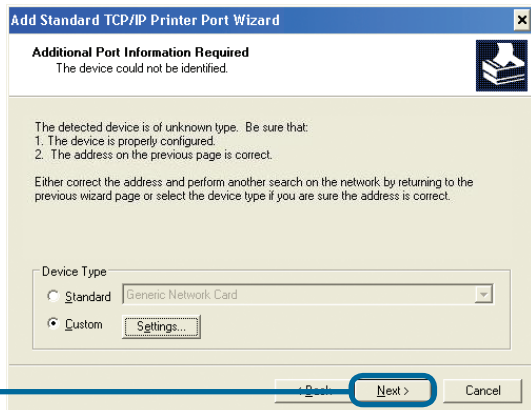
**PS-xxxxxx-P2** (для порта LPT2)

**PS-xxxxxx-S3** (для порта LPT COM)

Нажмите **OK**

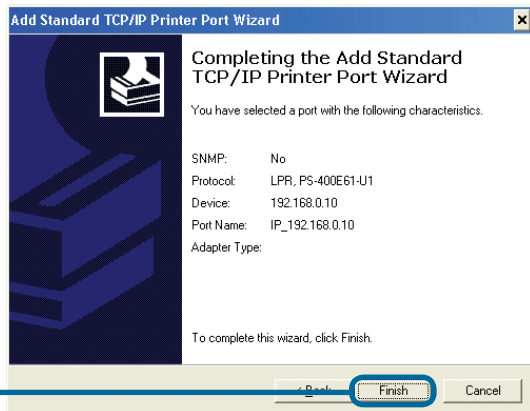


Нажмите **Далее**



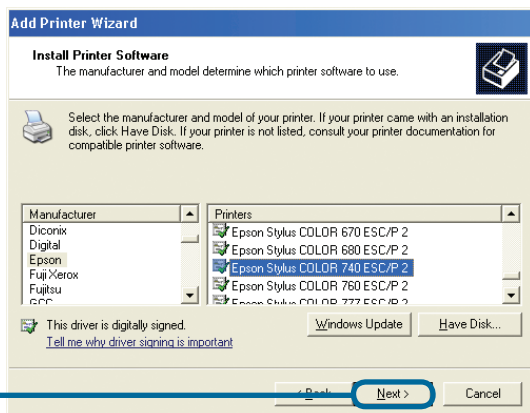
# 3

## Мастер установки принтера (продолжение)



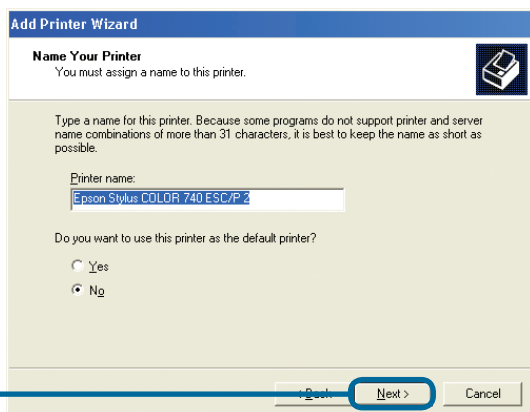
Нажмите **Готово**

В этом окне выберите производителя принтера и модель. (Если нет в списке, то вставьте CD или дискету с драйвером, которые поставляются с принтером, и нажмите Установить с диска.)



Нажмите **Далее**

Здесь настраиваются имя принтера и параметры по умолчанию.



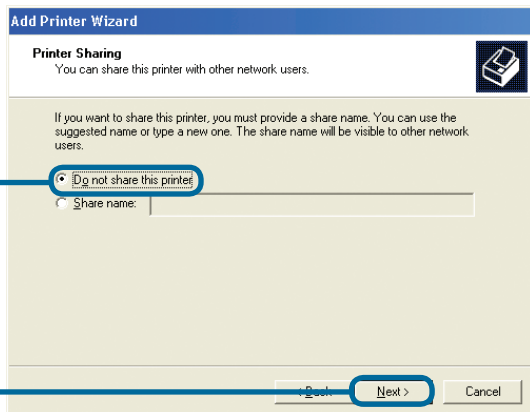
Нажмите **Далее**

# 3

## Мастер установки принтера (продолжение)

Если запретить общий доступ к принтеру, каждая система будет отправлять задания на печать непосредственно на принт-сервер.

**Выберите Нет общего доступа к этому принтеру**

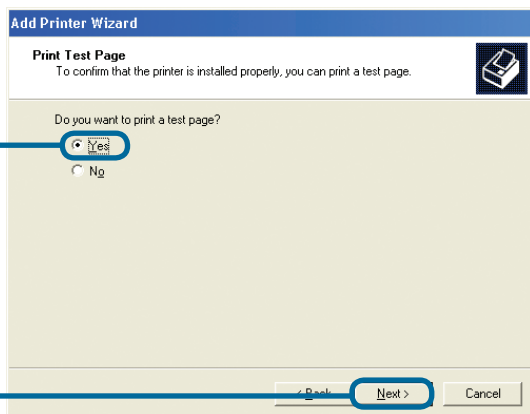


**Нажмите Далее**

**Выберите Да для печати тестовой страницы**

Если тестовая страница не была успешно напечатана, пожалуйста, обратитесь к разделу Часто задаваемые вопросы Руководства пользователя на CD-ROM.

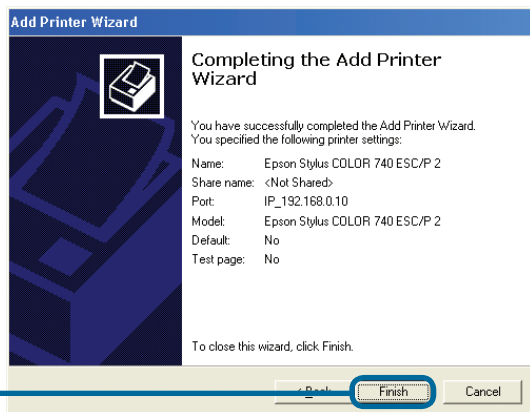
**Нажмите Далее**



Нажмите Готово для завершения мастера установки принтера.

Выполните все шаги мастера установки принтера для каждого принтера/порта и повторите всю процедуру на каждой системе, которая будет печатать через принт-сервер.

**Нажмите ГОТОВО**



**Установка завершена!**

## Техническая поддержка

Обновления программного обеспечения и документация доступны на Интернет-сайте D-Link.

D-Link предоставляет бесплатную поддержку для клиентов в течение гарантийного срока.

Клиенты могут обратиться в группу технической поддержки D-Link по телефону или через Интернет.

### **Техническая поддержка D-Link:**

+495-744-00-99

### **Техническая поддержка через Интернет**

<http://www.dlink.ru>

e-mail: [support@dlink.ru](mailto:support@dlink.ru)

**D-Link®**  
Building Networks for People

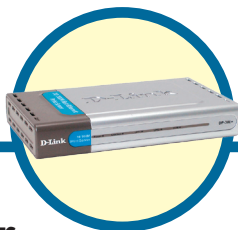




# D-Link®

## Guía rápida de instalación

Este producto puede configurarse con cualquier navegador web habitual, p. ej., Internet Explorer 6 o Netscape Navigator 7.0



### DP-300+

Servidor de impresión multipuerto Fast Ethernet

### Antes de empezar

Se requiere un dispositivo Ethernet, como, por ejemplo, un ordenador de sobremesa o portátil y una impresora LPT o con puerto serie, que se conectará al DP-300+.

**IMPORTANTE: APAGUE la impresora ANTES de instalar el DP-300+**

### Comprobación del contenido del paquete




Servidor de impresión multipuerto Fast Ethernet DP-300+



CD-ROM (Software, Manual y garantía)



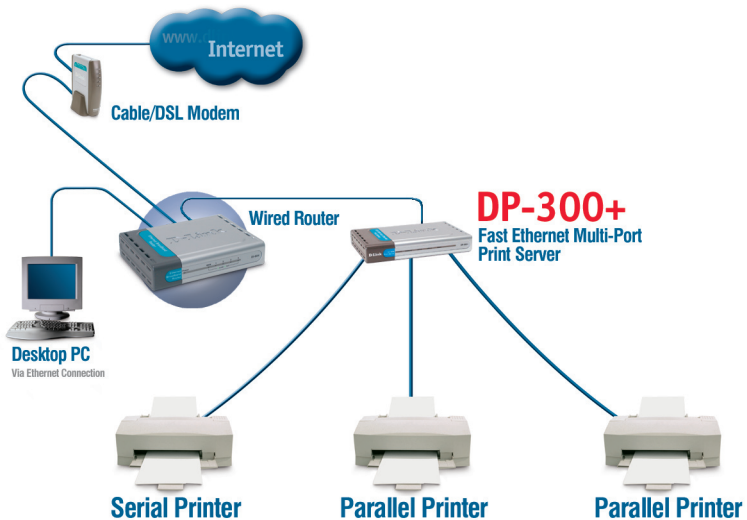
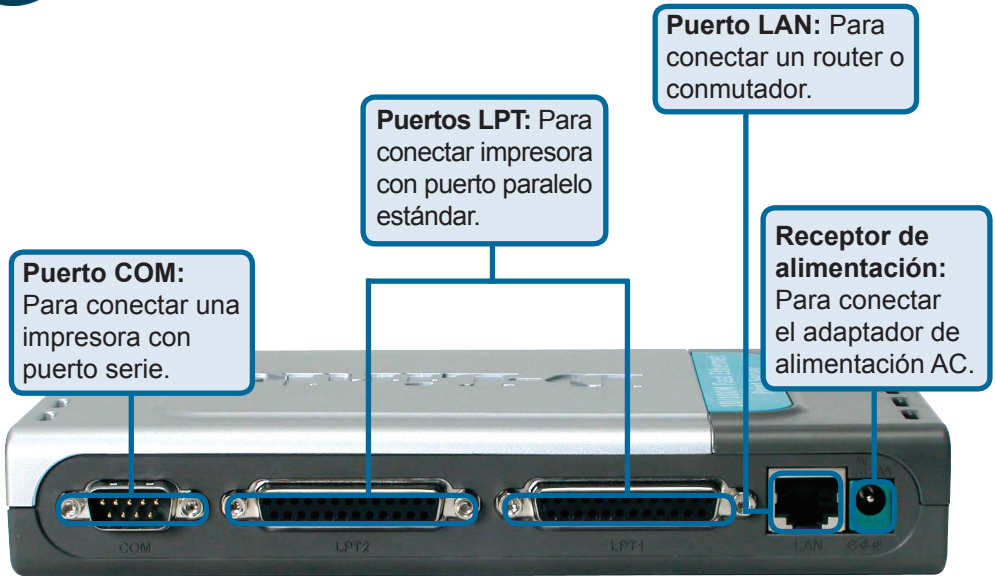
Adaptador de alimentación 5 V DC, 2,5 A

 El uso de una fuente de alimentación con distinto voltaje puede ser perjudicial y anular la garantía de producto.

Si falta alguno de estos componentes, contacte con su proveedor.

# 1

## Conexión del DP-300+ a la red



# 1

## Conexión del DP-300+ a la red (continuación)

**Nota:** No conecte el cable de alimentación al DP-300+ hasta que se le indique.



Para la impresión con Mac OS, consulte el Manual (.pdf), que se encuentra en el CD-ROM.

- A. Introduzca un extremo del cable Ethernet CAT5 straight-through en el puerto LAN del DP-300+. Conecte el otro extremo al puerto Ethernet del gateway o conmutador.
- B. Compruebe que la impresora está **APAGADA**.
- C. Introduzca un extremo del cable de impresora en el puerto correspondiente del DP-300+, y el otro extremo en el puerto correspondiente de la impresora
- D. **ENCIENDA** la impresora. Repita los pasos B-D para cada una de las impresoras antes de realizar lo indicado en el paso E.
- E. Introduzca un extremo del adaptador de alimentación en el DP-300+, y el otro extremo en la toma eléctrica. El DP-300+ se encenderá y realizará un autotest.

# 2

## Configuración del DP-300+

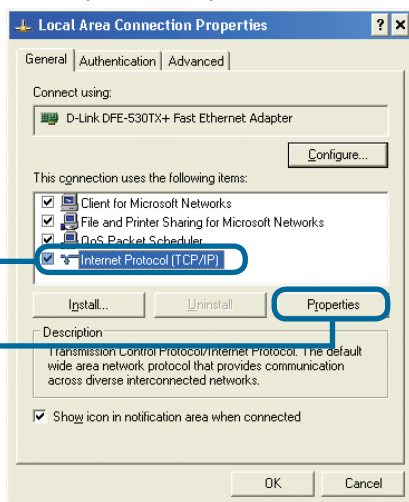
Si desea más información sobre la configuración del sistema operativo Windows o sobre la interfaz de gestión web, consulte el Manual, que se encuentra en el CD-ROM.

La dirección IP por defecto del DP-300+ es **192.168.0.10**. La dirección IP del DP-300+ debe pertenecer al mismo rango que la red. Puede cambiar la dirección IP del DP-300+ para que coincida con el esquema de dirección IP de la red existente. Para acceder a la interfaz de configuración web del servidor de impresión, asigne una dirección IP a uno de los PC de cable de la red, con el mismo esquema IP que el servidor de

Vaya a **Start > Haga clic con el botón de la derecha en My Network Places > seleccione Properties > Haga clic con el botón de la derecha en la conexión de red (Network Connection) asociada con el adaptador de red y seleccione Properties.**

Haga clic en **Internet Protocol (TCP/IP)**

Haga clic en **Properties**



# 2

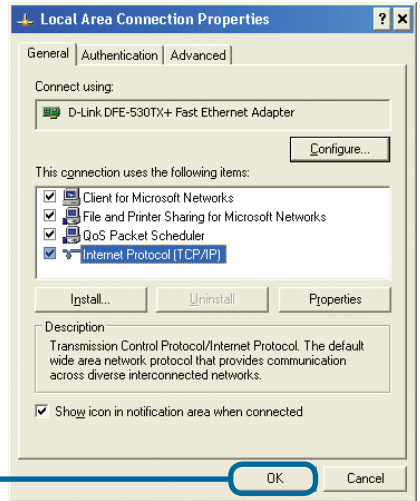
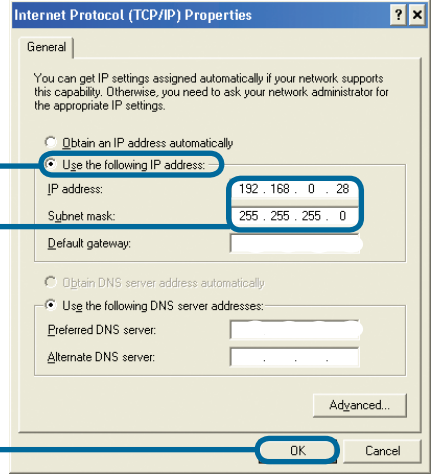
## Configuración del DP-300+(continuación)

Introduzca una dirección IP estática del mismo rango que el servidor de impresión.

Seleccione **Use the following IP address**

Dirección IP: **192.168.0.28**  
Máscara de subred: **255.255.255.0**

Haga clic en **OK**



Haga clic en **OK** para aplicar los nuevos parámetros

Abra el navegador web y escriba **http://192.168.0.10** en el cuadro de direcciones URL. Apriete la tecla Enter o Return.

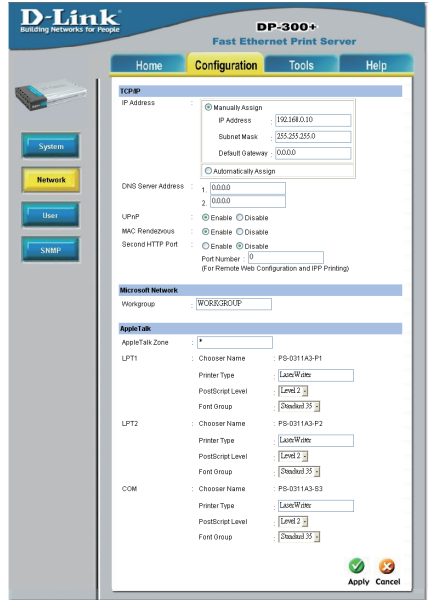


# 2

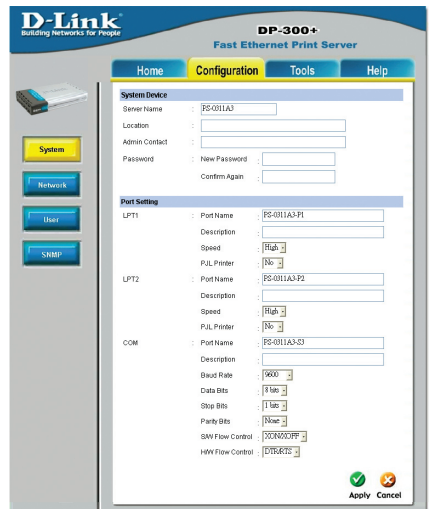
## Configuración del DP-300+(continuación)

La dirección IP del DP-G321 puede modificarse desde la opción Network, en la ficha Configuration.

En todos los ejemplos de esta Guía rápida de instalación se utiliza la dirección IP por defecto del servidor de impresión. Realice los cambios necesarios si ha modificado la dirección IP del DP-G321.



Seleccione el botón System, bajo la ficha Configuration, para ver el servidor de impresión y los nombres de los puertos. Si cambia los nombres de los puertos, anótelos porque puede necesitarlo cuando agregue una impresora con el asistente (Add Printer Wizard).

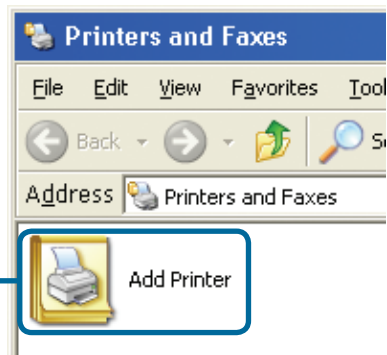


# 3

## Asistente de agregación de impresora

### En Windows XP:

Vaya al menú Start > **Configuration** > Printers and Faxes > Add a Printer

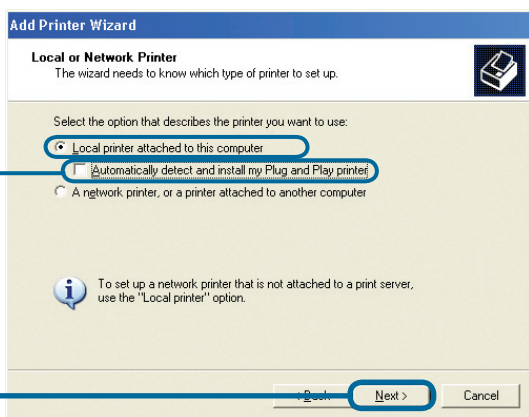


Haga doble clic en el icono **Add Printer**



Haga clic en **Next**

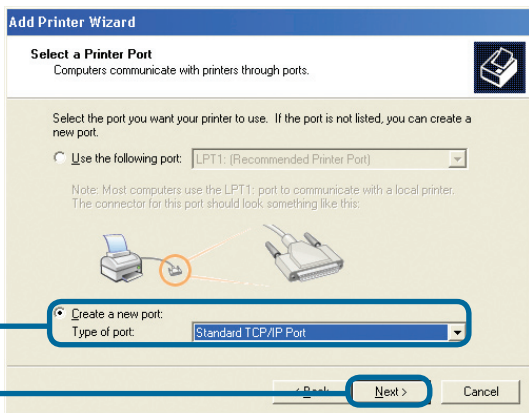
Seleccione **Local Printer** y desactive **Automatically detect and install my Plug and Play printer**



Haga clic en **Next**

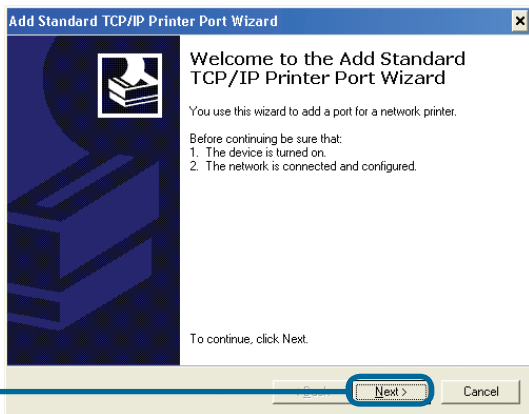
# 3

## Asistente de agregación de impresora (continuación)



Seleccione **Create a new port** y elija **Standard TCP/IP Port** en el menú desplegable

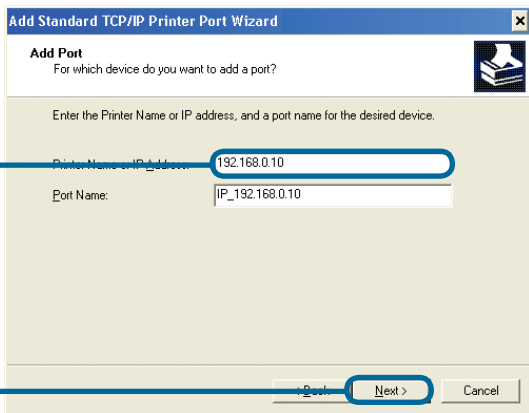
Haga clic en **Next**



Haga clic en **Next**

Escriba **192.168.0.10**

El nombre del puerto (Port Name) se rellenará automáticamente.

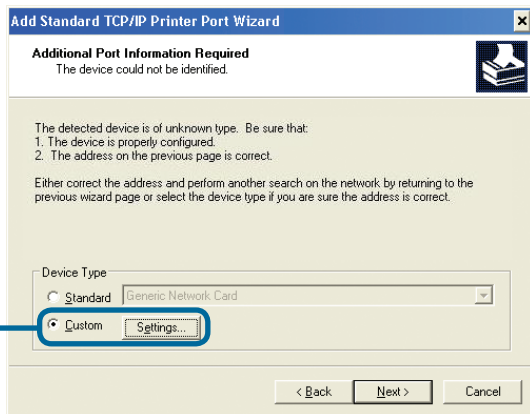


Haga clic en **Next**

# 3

## Asistente de agregación de impresora (continuación)

Seleccione **Custom** y haga clic en el botón **Settings**



Seleccione **LPR**

Introduzca el nombre del puerto (Port) para el puerto al que se encuentra conectada la impresora.

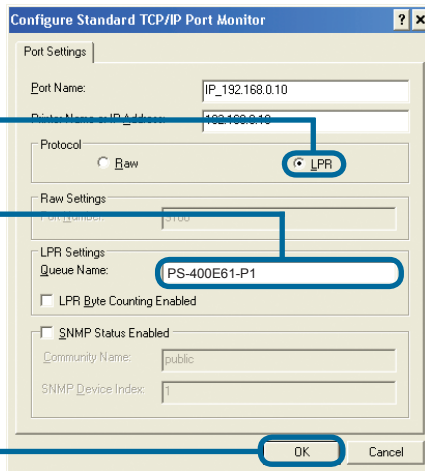
Los nombres de puerto por defecto se diferencian por el MAC ID:

**PS-xxxxxx-P1** (para el puerto 1 LPT)

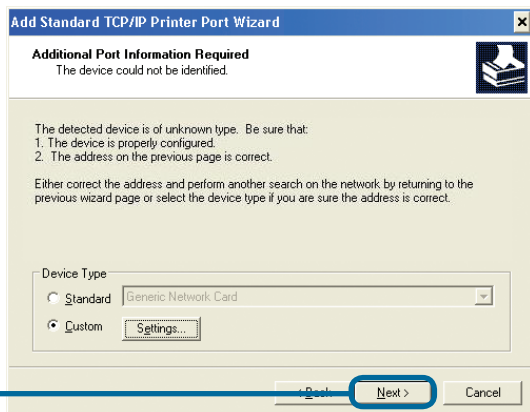
**PS-xxxxxx-P2** (para el puerto 2 LPT)

**PS-xxxxxx-S3** (para el puerto COM)

Haga clic en **OK**



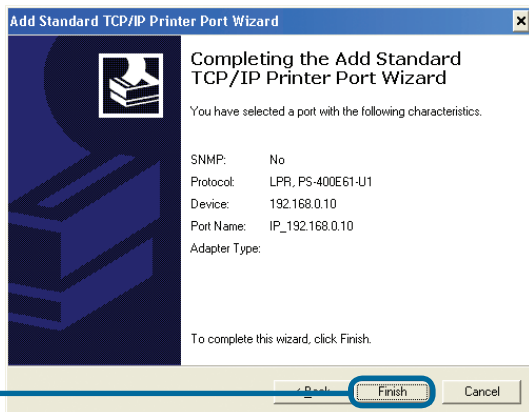
Haga clic en **Next**





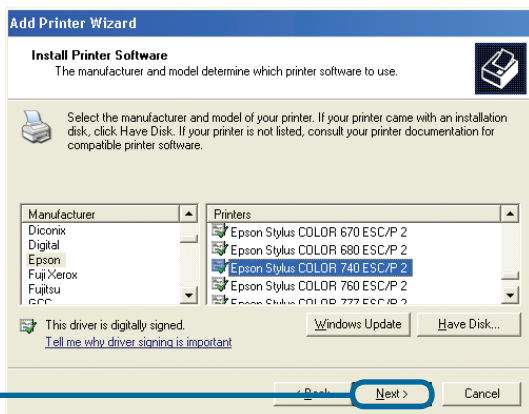
# 3

## Asistente de agregación de impresora (continuación)



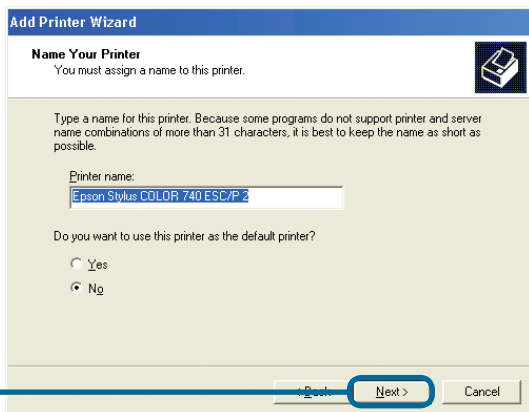
Haga clic en **Finish**

Desplácese por esta ventana y seleccione el fabricante y el modelo de la impresora. (Si no figura en la lista, introduzca el CD con el controlador o el disquete de la impresora y haga clic en Have Disk.)



Haga clic en **Next**

El nombre de la impresora y los parámetros por defecto de la impresora se configuran aquí



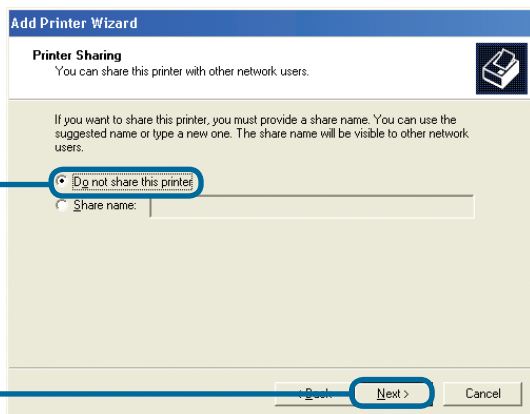
Haga clic en **Next**

# 3

## Asistente de agregación de impresora (continuación)

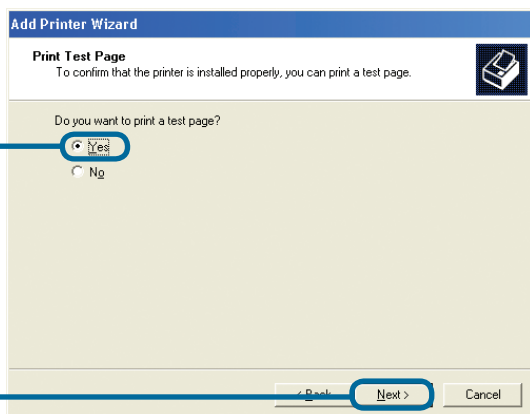
Para optar a no compartir la impresora, cada sistema imprimirá directamente en el servidor de impresión.

**Seleccione Do not share this printer**



**Haga clic en Next**

**Seleccione Yes para imprimir una página de prueba**

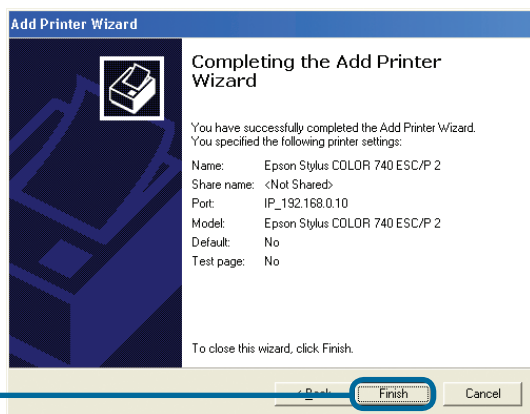


**Haga clic en Next**

Haga clic en Finish para terminar con el asistente.

Repita los pasos del asistente para cada impresora/puerto y repita el proceso para cada sistema que tenga que imprimir.

**Haga clic en Finish**



**La configuración ha finalizado.**

## Asistencia Técnica

D-Link Latin América pone a disposición de sus clientes, especificaciones, documentación y software mas reciente a través de nuestro Sitio Web [www.dlinkla.com](http://www.dlinkla.com)

El servicio de soporte técnico tiene presencia en numerosos países de la Región Latino América, y presta asistencia gratuita a todos los clientes de D-Link, en forma telefónica e internet, a través de la casilla [soporte@dlinkla.com](mailto:soporte@dlinkla.com)

### **Soporte Técnico Help Desk Argentina:**

**Teléfono:** 0800-12235465 Lunes a Viernes 09:00 am a 22:00 pm

### **Soporte Técnico Help Desk Chile:**

**Teléfono:** 800 8 35465 Lunes a Viernes 08:00 am a 21:00 pm

### **Soporte Técnico Help Desk Colombia:**

**Teléfono:** 01800-9525465 Lunes a Viernes 07:00 am a 20:00 pm

### **Soporte Técnico Help Desk Ecuador:**

**Teléfono:** 1800-035465 Lunes a Viernes 07:00 am a 20:00 pm

### **Soporte Técnico Help Desk El Salvador:**

**Teléfono:** 800-6335 Lunes a Viernes 06:00 am a 19:00 pm

### **Soporte Técnico Help Desk Guatemala:**

**Teléfono:** 1800-8350255 Lunes a Viernes 06:00 am a 19:00 pm

### **Soporte Técnico Help Desk Panamá:**

**Teléfono:** 00800 0525465 Lunes a Viernes 07:00 am a 20:00 pm

### **Soporte Técnico Help Desk Costa Rica:**

**Teléfono:** 0800 0521478 Lunes a Viernes 06:00 am a 19:00 pm

### **Soporte Técnico Help Desk Perú:**

**Teléfono:** 0800-00968 Lunes a Viernes 07:00 am a 20:00 pm

### **Soporte Técnico Help Desk México:**

**Teléfono:** 001 800 123-3201 Lunes a Viernes 06:00 am a 19:00

### **Soporte Técnico Help Desk Venezuela:**

**Teléfono:** 0800-1005767 Lunes a Viernes 08:00 am a 21:00 pm

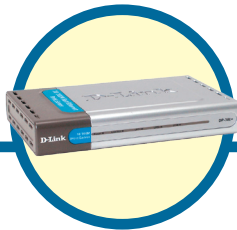
**D-Link®**  
Building Networks for People



**D-Link®**

# Guia de Instalação rápida

Este produto pode ser configurado utilizando qualquer navegador web atual, como por ex., Internet Explorer 6 ou Netscape Navigator 7.0



## DP-300+

Servidor de Impressão Fast Ethernet Multi-Portas

## Antes de Você Começar

Você precisará de um dispositivo habilitado para Ethernet, como por exemplo um laptop ou desktop e uma impressora LPT ou impressora com porta serial que se conectará ao DP-300+.

**IMPORTANTE: DESLIGUE a impressora ANTES de instalar o DP-300+**

## Verifique o Conteúdo da Sua Embalagem



Servidor de Impressão Fast Ethernet Multi-Portas DP-300+



CD-ROM (Software, Manual e Garantia)



Adaptador de Alimentação de 5V 2.5A DC

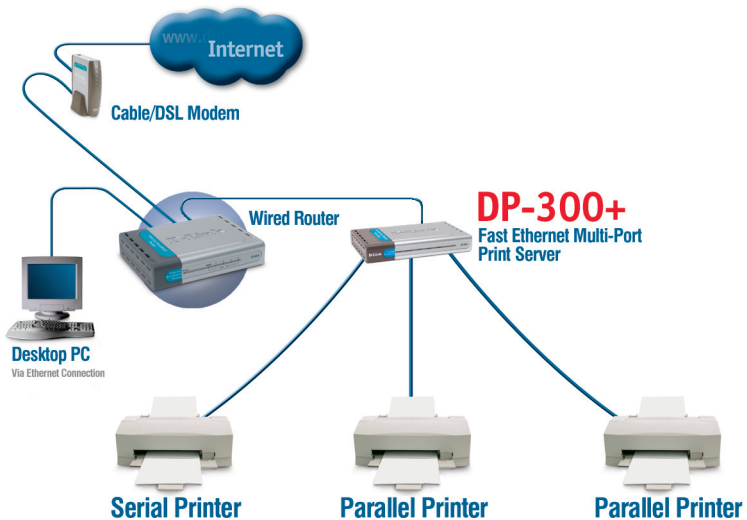
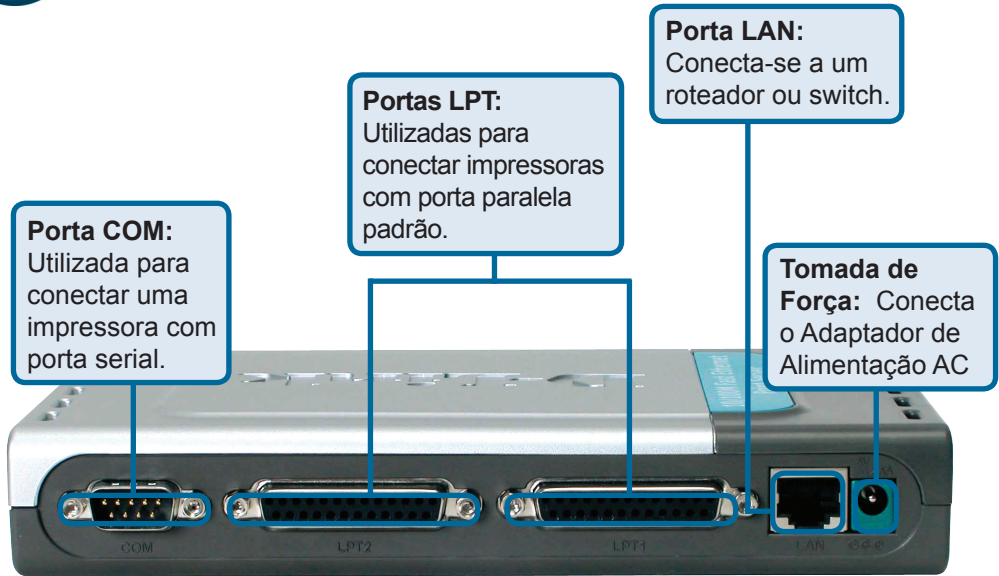


A utilização de uma fonte de alimentação com uma classe de tensão diferente pode danificar este produto e anular sua garantia.

Se qualquer dos itens acima estiver faltando, favor contatar o seu revendedor.

# 1

## Conectando o DP-300+ à sua Rede



# 1

## Conectando o DP-300+ à sua Rede (continuação)

**Observação:** Não conecte o cabo de alimentação ao DP-300+ até que seja orientado a fazer isto.



Para impressão em Mac OS, favor consultar o manual (.pdf) localizado no CD-ROM.

- Insira uma extremidade do cabo Ethernet CAT5 direto na Porta LAN do DP-300+. Conecte a outra extremidade a uma porta Ethernet no seu gateway ou switch.
- Certifique-se que a sua Impressora esteja **DESLIGADA**.
- Conecte uma extremidade do seu cabo de impressora na porta apropriada do DP-300+ e a outra ponta na porta correspondente na sua impressora.
- LIGUE** a impressora. Repita as etapas B-D para cada impressora antes de ir para a etapa E.
- Conecte uma extremidade do adaptador de alimentação no DP-300+ e a outra ponta na sua tomada elétrica. O DP-300+ irá ligar e iniciar um auto-teste.

# 2

## Configurando o DP-300+

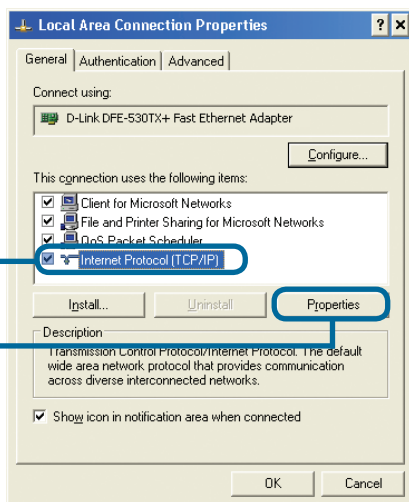
Para configuração adicional do sistema operacional Windows ou maiores informações sobre a interface de administração web, consulte o manual localizado no CD-ROM.

O endereço IP padrão de fábrica do DP-300+ é **192.168.0.10**. O endereço IP do DP-300+ deve estar no mesmo intervalo daquele da sua rede. Você pode alterar o endereço IP do DP-300+ para corresponder ao esquema de endereços IP da sua rede existente. Para acessar a interface de configuração via web do Servidor de Impressão, atribua um endereço IP em um dos PCs com fio na sua rede ao mesmo esquema de endereços IP do Servidor de Impressão.

Vá para **Iniciar > Dê um duplo clique em Meus locais de rede > seleccione Propriedades > Clique com o botão direito do mouse na Conexão de rede associada com o seu Adaptador de Rede e seleccione Propriedades.**

Clique em **Protocolo de Internet (TCP/IP)**

Clique em **Propriedades**



# 2

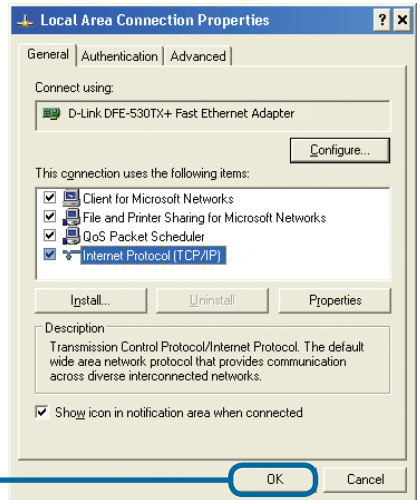
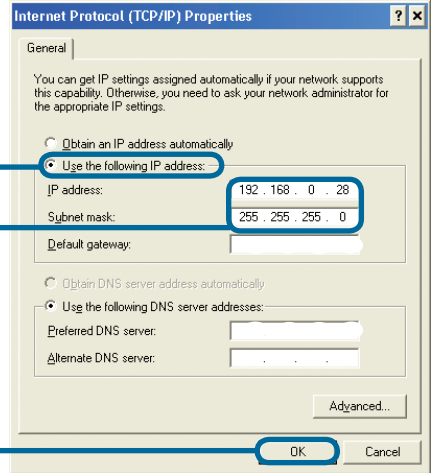
## Configurando o DP-300+ (continuação)

Insira um endereço de IP estático na mesma faixa do servidor de impressão. (192.168.0.xx)

Selecione **Utilize o seguinte endereço IP**

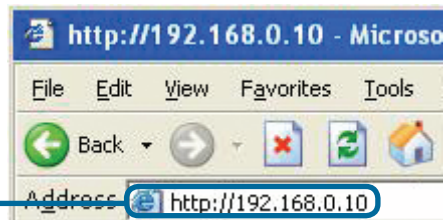
Endereço IP: **192.168.0.28**  
Máscara de sub-rede: **255.255.255.0**

Clique em **OK**



Clique em **OK** para aplicar as novas configurações

Abra o seu navegador web e digite **http://192.168.0.10** na sua caixa de endereços de Internet. Em seguida, pressione a tecla **Enter** ou **Return**.



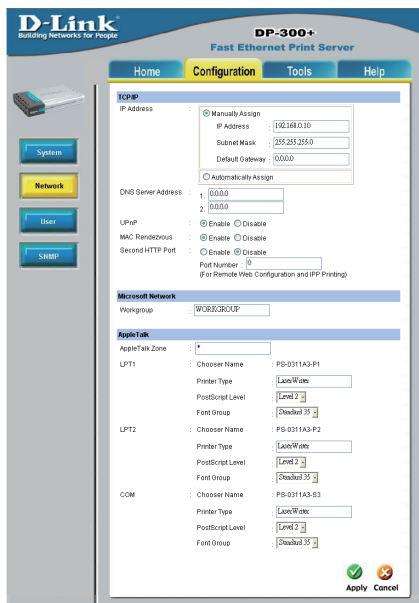


# 2

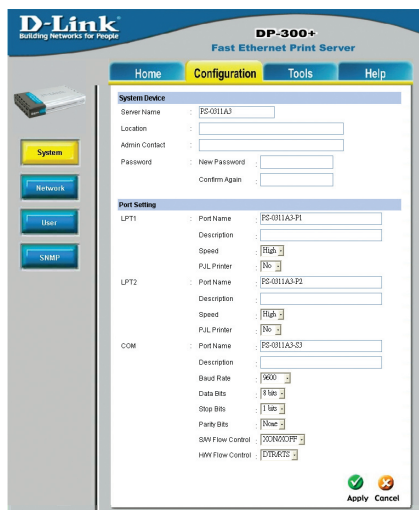
## Configurando o DP-300+ (continuação)

O endereço IP do DP-G321 pode ser modificado na opção **Rede** sob a guia **Configuração**.

O Guia de Instalação Rápida irá utilizar o endereço IP padrão do Servidor de Impressão em todos os exemplos. Faça as mudanças apropriadas caso tenha modificado o endereço IP do DP-G300+.



Selecione o botão **Sistema** na guia **Configuração** para ver os nomes do Servidor de Impressão e Portas. Se você alterar os nomes das portas, favor anotá-los uma vez que elas serão necessárias durante o Assistente para adicionar impressora.



# 3

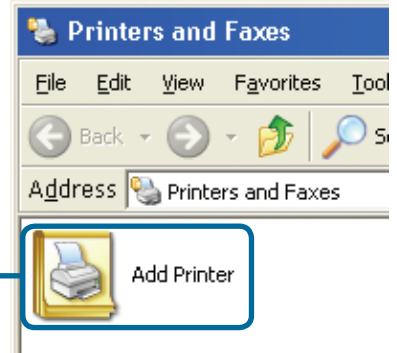
## O Assistente para adicionar impressora

### Para o Windows XP:

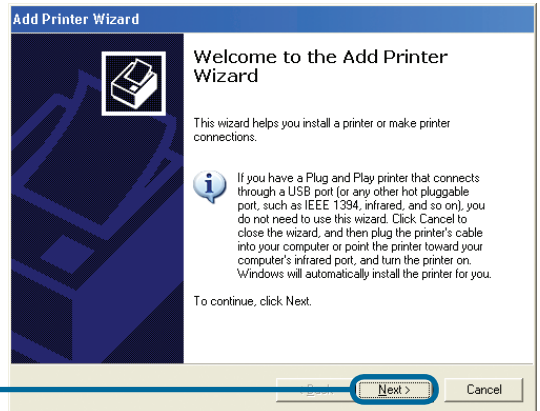
Vá para o menu **Iniciar** > **Impressoras e aparelhos de fax** > **Adicionar uma impressora**



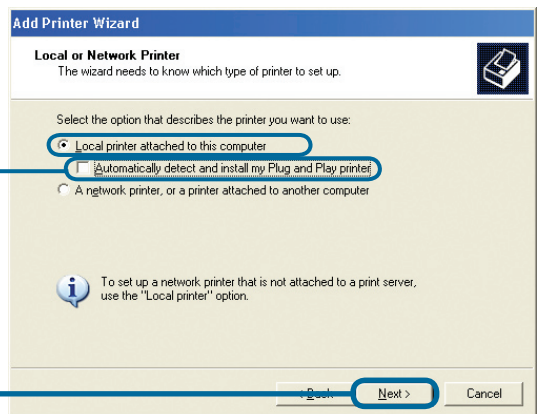
Dê um duplo clique no ícone **Adicionar impressora**



Clique em **Avançar**



Select **Local Printer** and uncheck **Automatically detect and install my Plug and Play printer.**



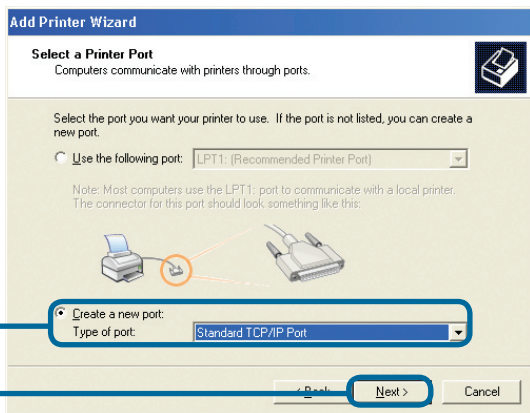
Clique em **Avançar**

# 3

## O Assistente para adicionar impressora (continuação)

Selecione **Criar uma nova porta** e selecione **Standard TCP/IP Port** do menu suspenso.

Clique em **Avançar**

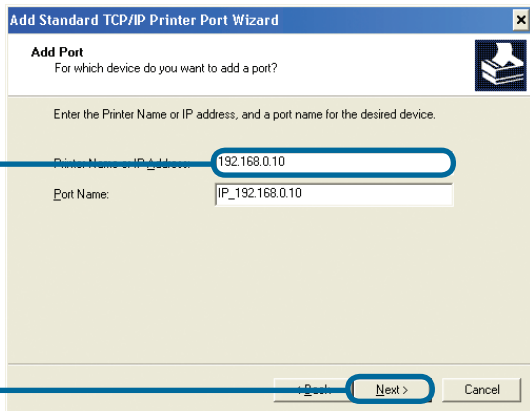


Clique em **Avançar**

Type **192.168.0.10**

O Nome da porta será preenchido automaticamente.

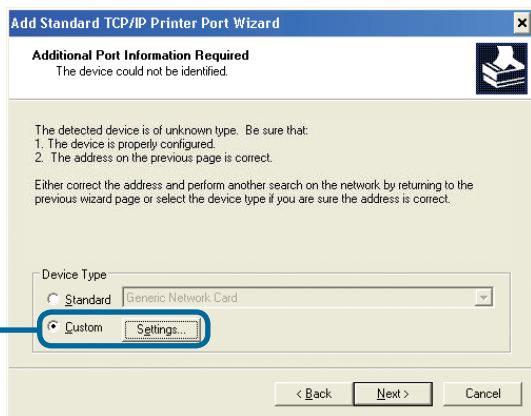
Clique em **Avançar**



# 3

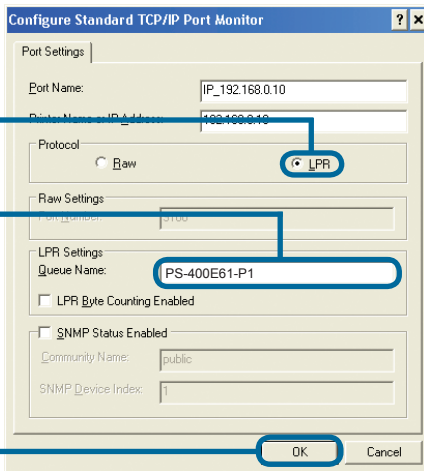
## O Assistente para adicionar impressora (continuação)

Selecione **Personalizado** e clique no botão **Configurações**



Selecione **LPR**

Insira o nome da Porta para a porta na qual a impressora está conectada.



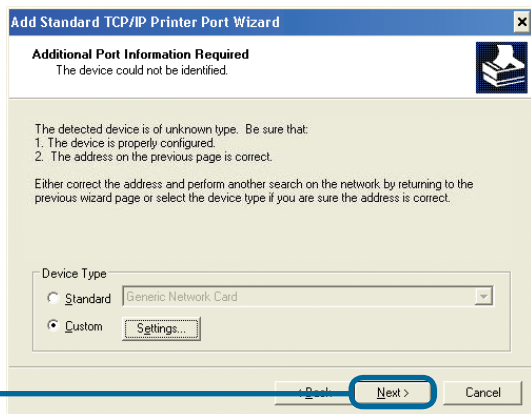
Default port names differ with the device MAC ID:

**PS-xxxxxx-P1** (for LPT Port 1)

**PS-xxxxxx-P2** (for LPT Port 2)

**PS-xxxxxx-S3** (for COM Port)

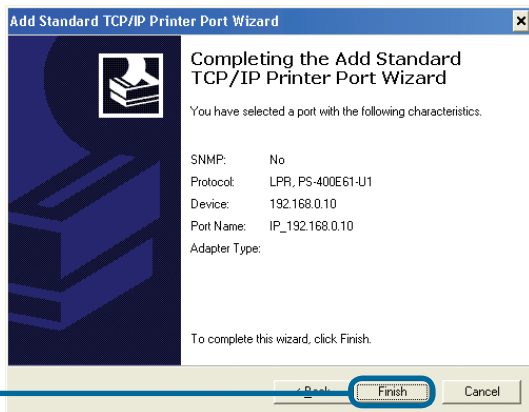
Clique em **OK**



Clique em **Avançar**

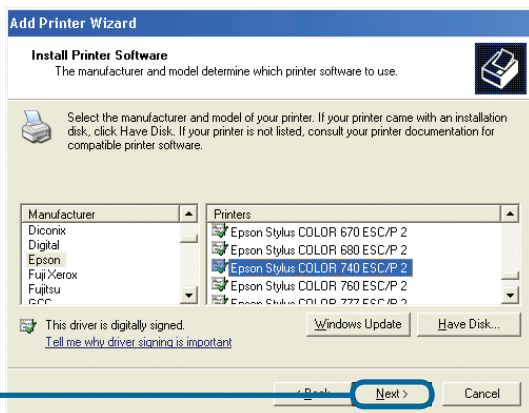
# 3

## O Assistente para adicionar impressora (continuação)



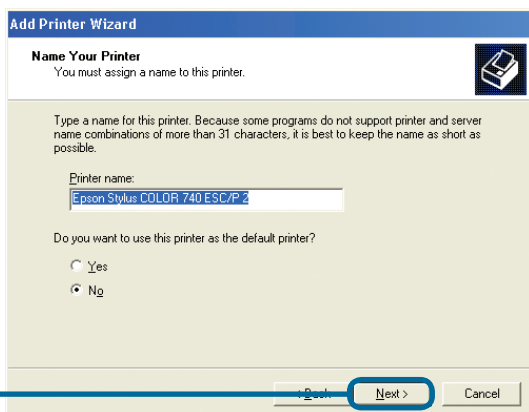
Clique em **Concluir**

Nesta janela, role a tela para baixo e selecione o fabricante e modelo da sua impressora. (Caso não esteja listada, insira o CD ou disquete de drivers que vem com sua impressora e clique em Have Disk.)



Clique em **Avançar**

O nome da impressora e suas configurações default são configurados aqui.



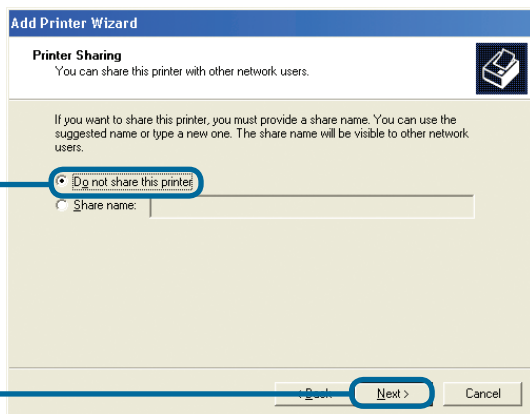
Clique em **Avançar**

# 3

## O Assistente para adicionar impressora (continuação)

Ao optar por não compartilhar a impressora, cada sistema irá imprimir diretamente para o servidor de impressão.

**Selecione Não compartilhar esta impressora**

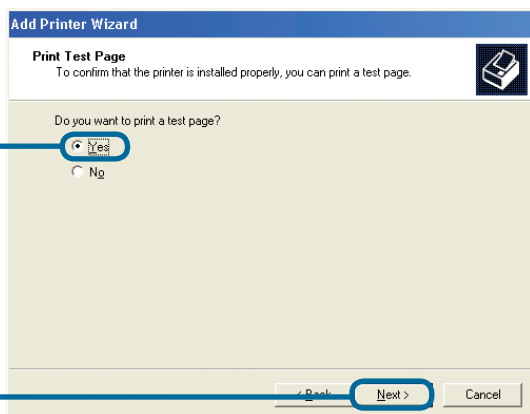


**Clique em Avançar**

**Selecione Sim** para imprimir uma página de teste

Se a página de teste não é impressa com sucesso, favor verificar as Perguntas Mais Frequentes (FAQs) no Manual do Usuário no CD-ROM.

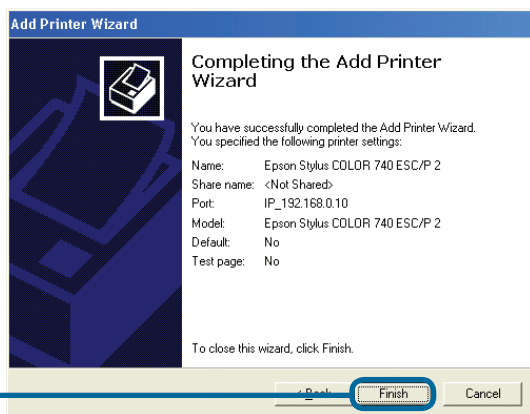
**Clique em Avançar**



Clique em Concluir para finalizar o Assistente para adicionar impressora.

Repita as etapas do Assistente para adicionar impressora para cada Impressora/Porta e repita todo o processo em cada sistema que irá imprimir.

**Clique em Concluir**



**Sua configuração está concluída!**

## Suporte Técnico

Você pode encontrar atualizações de software e documentação de usuário no site da D-Link Brasil [www.dlinkbrasil.com.br](http://www.dlinkbrasil.com.br).

A D-Link fornece suporte técnico gratuito para clientes no Brasil durante o período de vigência da garantia deste produto.

### Suporte Técnico para clientes no Brasil:

#### Telefone

São Paulo +11-2185-9301

Segunda à sexta

Das 8h30 às 18h30

Demais Regiões do Brasil 0800 70 24 104

#### E-mail:

e-mail: [suporte@dlinkbrasil.com.br](mailto:suporte@dlinkbrasil.com.br)

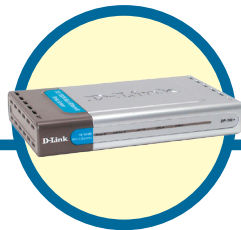
**D-Link®**  
Building Networks for People





# D-Link® Quick Installation Guide

可以採用目前任何的web  
瀏覽器來安裝該產品，  
比如，Internet Explorer 6或  
Netscape Navigator 7.0



**DP-300+**  
高速乙太網路  
多埠印表伺服器

## 開始之前

您必須有一台支援乙太網路的設備，如，筆記型或桌上型電腦及LPT印表機或具有serial port的印表機，以用於連接DP-300+。

**注意：安裝DP-300+前，請先關閉印表機電源。**

## 檢查包裝內容




DP-300+高速乙太網路多埠印表伺服器



CD-ROM (包含軟體，使用手冊)



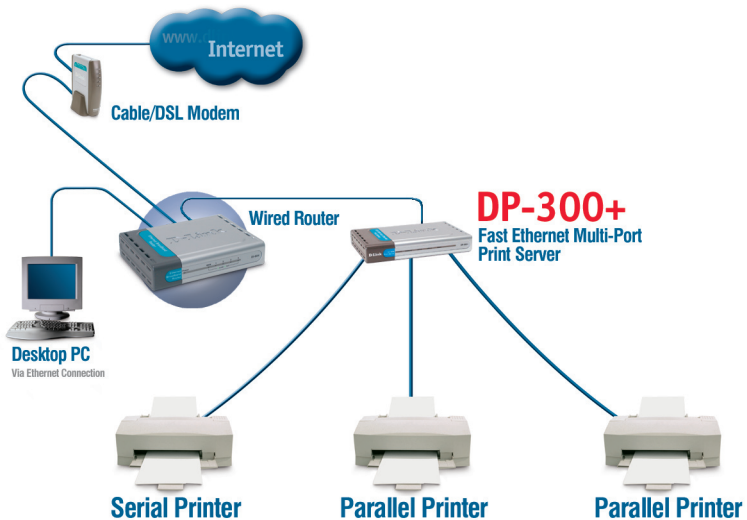
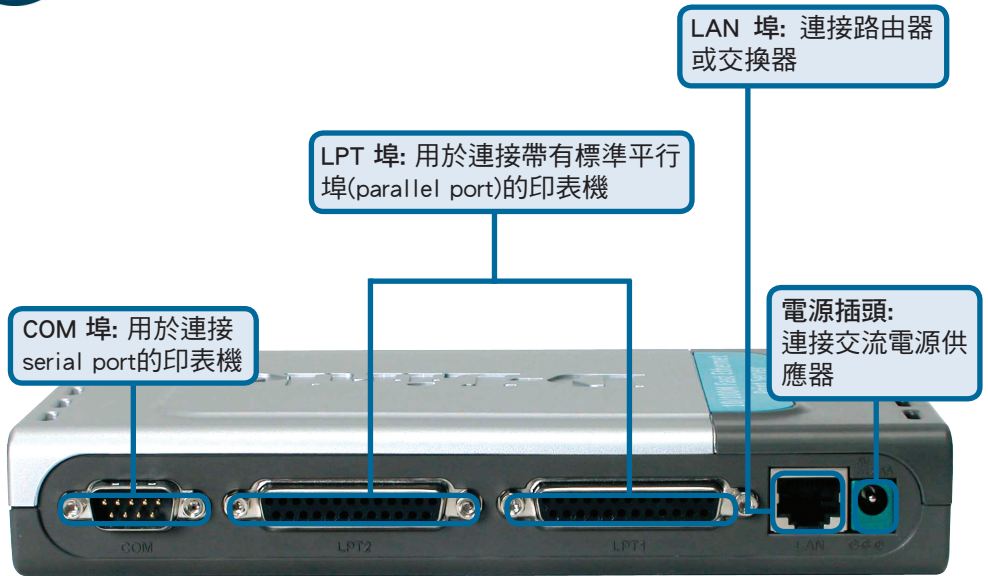
5V DC, 2.5A電源供應器

 使用不同電壓等  
級的電源會損壞該產  
品，並使該產品的保固  
無效

如以上物件有任何遺失，請與經銷商聯繫。

# 1

## 將DP-300+連接到網路



# 1

## 將DP-300+連接到網路(繼續)

**注意：**當提示您可連接電源線時，您才能將電源線連接到DP-300+。



在Mac作業系統下列印，請參考光碟上的使用手冊 (. pdf) 。

- 將平行5類乙太網路線的一端插入DP-300+ LAN埠，另一端插入閘道器或交換器上的乙太網路埠。
- 確定印表機已關閉。
- 將印表機電纜的一端插入DP-300+適當的埠，另一端插入印表機相對應的埠。
- 打開印表機。執行步驟E前，對每台印表機重復步驟B-D。
- 將電源供應器的一端插入DP-300+，另一端插入電源插座。DP-300+ 啟動，並開始自動偵測。

# 2

## 配置DP-300+

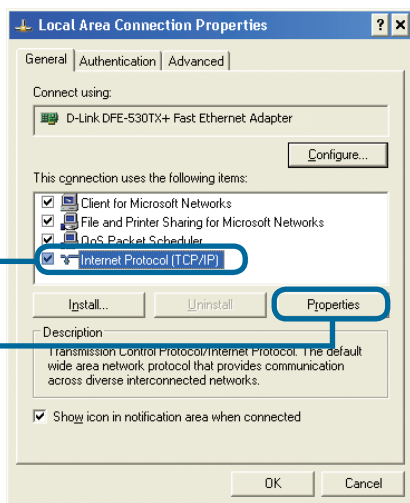
對於其他Windows作業系統的安裝或Web管理介面的資訊，參考光碟上的使用手冊。

DP-300+的出廠預設IP地址是192.168.0.10。DP-300+的IP地址必須與用戶網路在同一範圍。可更改DP-300+的IP地址使其與現有網路的IP地址匹配。要連結印表伺服器的Web配置介面，請分配網路上某台PC一個與印表伺服器IP網段相同的IP地址。

進入 **開始** > 右擊 **網路連線** > 選擇 **內容** > 按右鍵單擊與網卡相關的網路連線區域連線, 選擇 **內容**。

單擊 **Internet Protocol (TCP/IP)**

單擊 **內容**



# 2

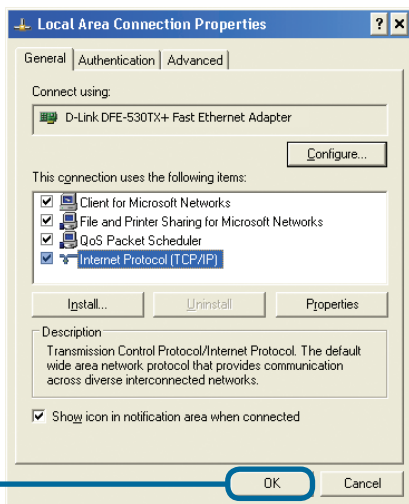
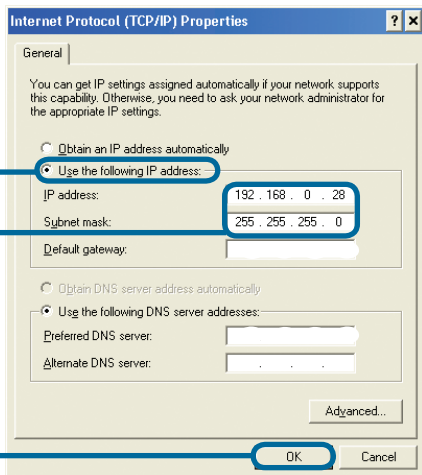
## 配置DP-300+(繼續)

輸入一個與列印伺服器處於相同範圍的靜態IP位址。  
(192.168.0.xx)

選擇 使用下列的IP位置

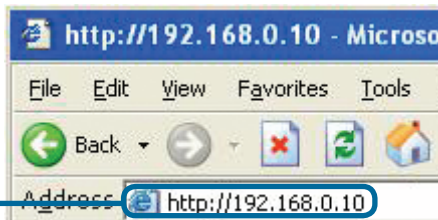
IP 地址: 192.168.0.28  
子網路遮罩: 255.255.255.0

單擊 確定



單擊 確定 啟用新的設置。

打開Web瀏覽器,在URL位址欄中  
輸入 **http://192.168.0.10**

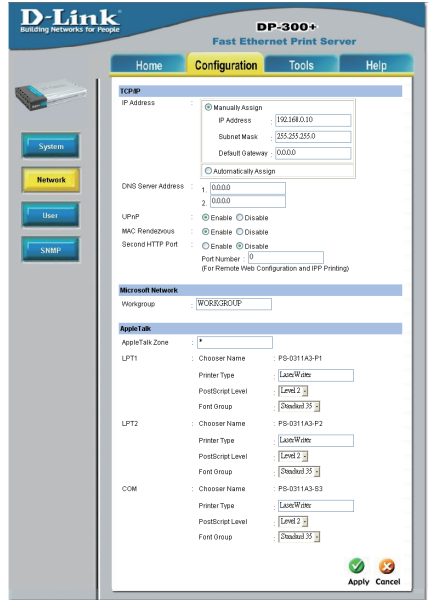


# 2

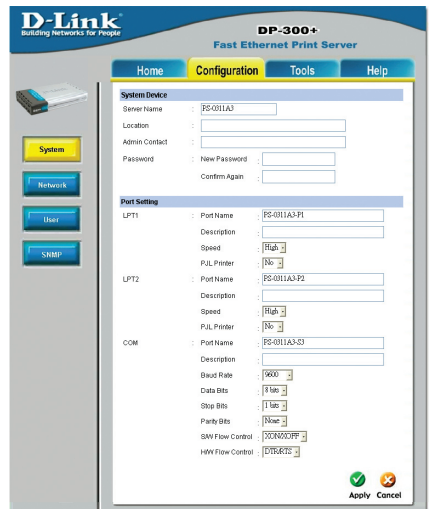
## 配置DP-300+(繼續)

在Configuration標籤下從Network選項中可以更改DP-G300+的IP位址。

本快速安裝手冊會在所有的例子中使用列印伺服器的預設IP位址。如果您已經更改了DP-G300+的IP地址，請選擇作一些適合的更改。



選擇Configuration標籤下的System按鈕來查看列印伺服器埠名稱。如果更改了埠的名稱，請注意一下這些名稱，因為在新增印表機精靈中會用到它們。

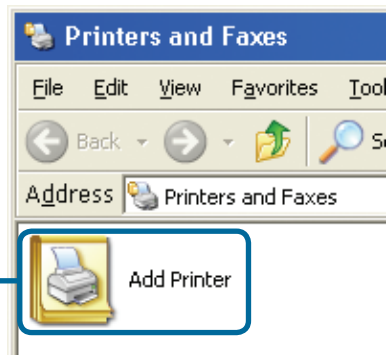


# 3

## 新增印表機精靈

對於Windows XP:

進入開始 > 印表機和傳真 > 新增印表機

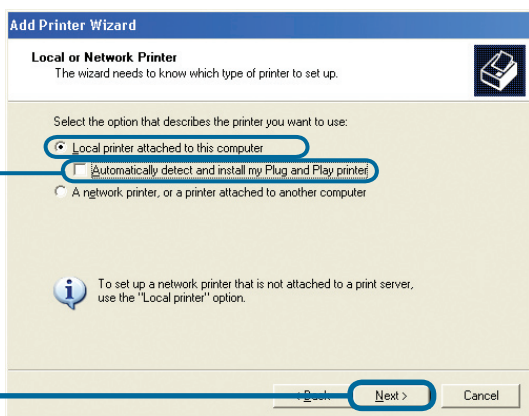


雙擊 **新增印表機** 圖示



單擊 **下一步**

選擇**本機印表機**，並不要選取  
**自動偵測並安裝我的隨插即用  
印表機。**



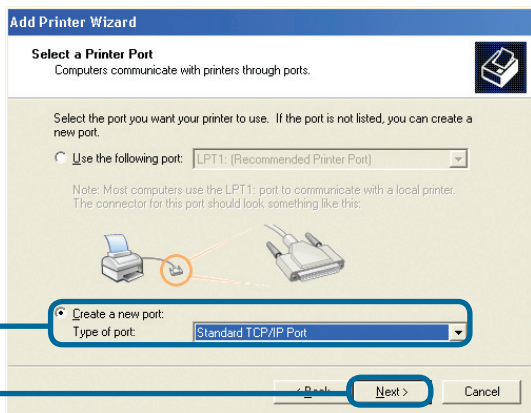
單擊 **下一步**

## 3

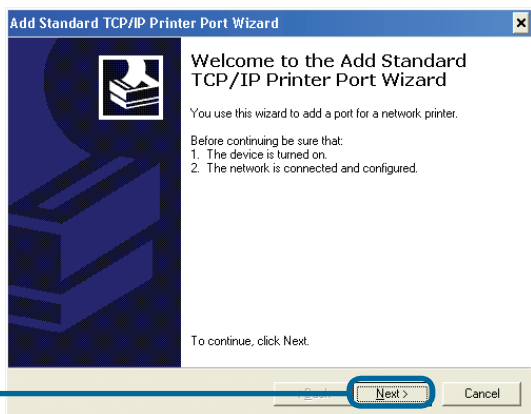
## 新增印表機精靈(繼續)

選擇 **建立新的連接埠**，並從下拉功能表中選擇 **Standard TCP/IP Port**。

單擊 **下一步**



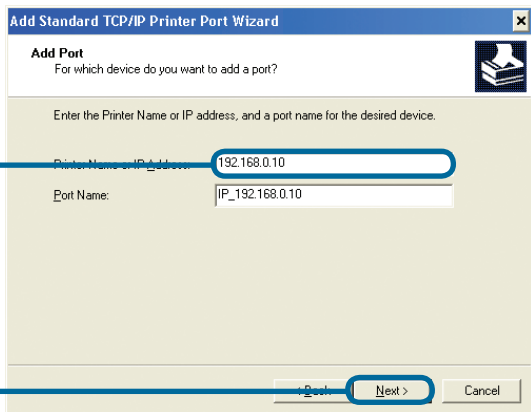
單擊 **下一步**



輸入 **192.168.0.10**

埠名稱會被自動填入。

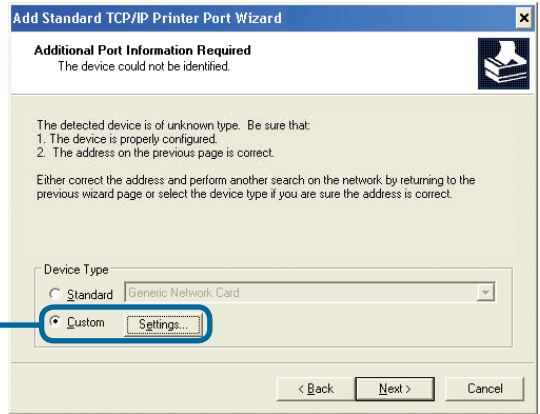
單擊 **下一步**



# 3

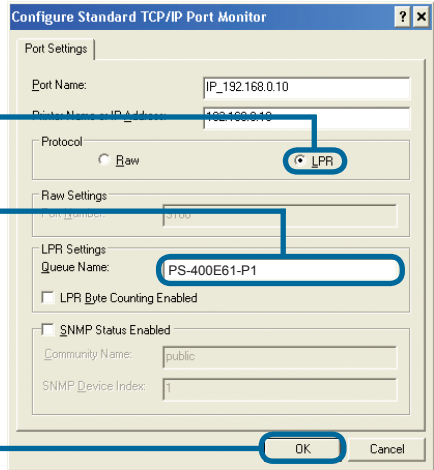
## 新增印表機精靈(繼續)

選擇 **自訂**, 並單擊  
**設定** 按鈕



選擇 **LPR**

輸入與印表機相連的**埠**的名稱。



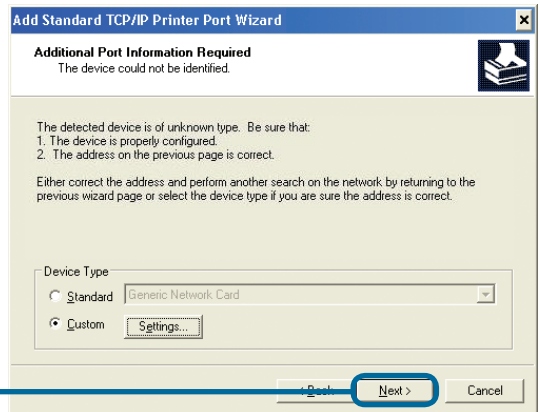
預設埠名稱根據設備MAC ID而有所不同:

PS-xxxxxx-P1 (用於LPT埠 1)

PS-xxxxxx-P2 (用於LPT埠 2)

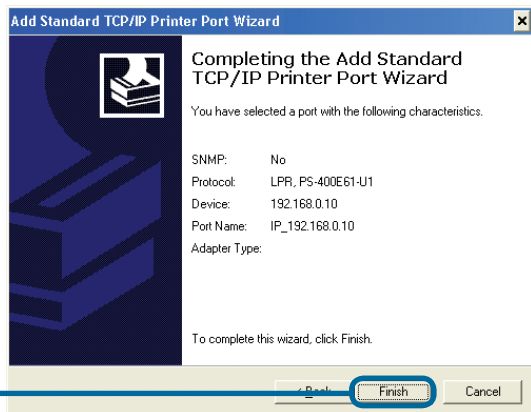
PS-xxxxxx-S3 (用於COM埠)

單擊 **確定**



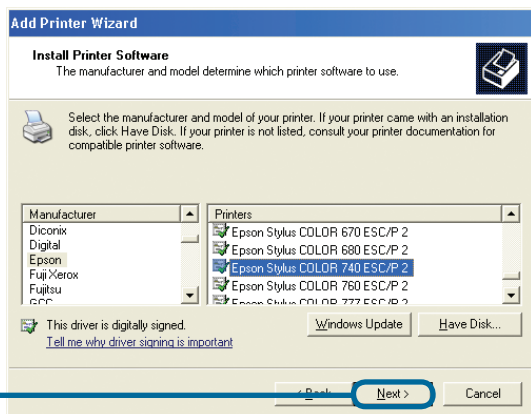
單擊 **下一步**





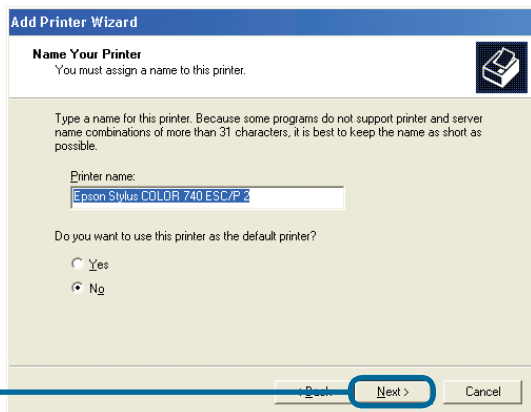
單擊 確定

在這個畫面中,向下拉動選單以選擇印表機的廠商和機型。(如果沒有列出來,請放入印表機的光碟和磁片)



單擊 下一步

在此配置印表機的名稱和預設印表機的設定



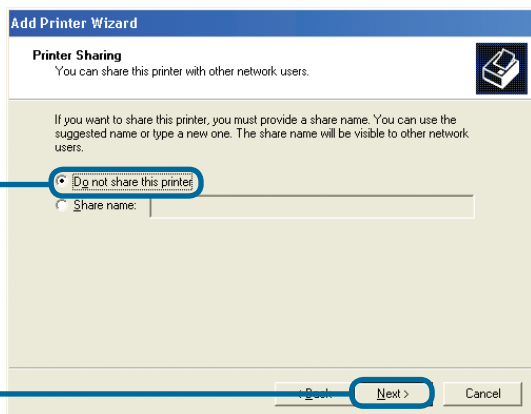
單擊 下一步

# 3

## 新增印表機精靈(繼續)

選擇不共用印表機,每個系統會直接列印到列印伺服器上。

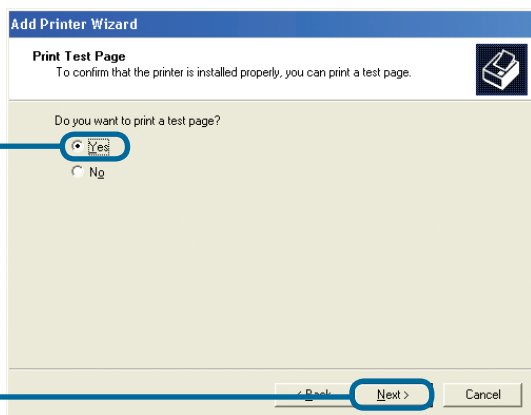
選擇 **不共用此印表機**



單擊 **下一步**

選擇 **是**, 列印一張測試頁面。

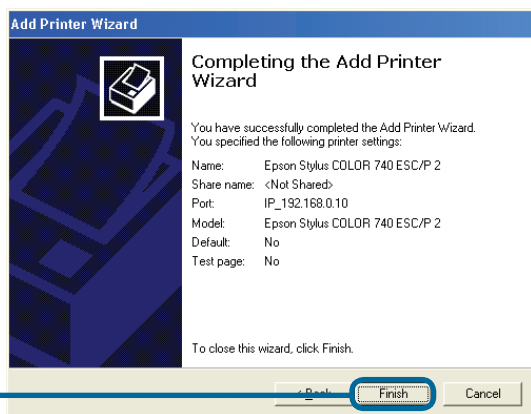
如果該測試頁面沒有成功列印出來,請參考光碟上使用手冊中的 Frequently Asked Questions.



單擊 **下一步**

單擊 ”完成” , 結束新增印表機精靈。

對每台印表機/埠都重複新增印表機精靈步驟,在每個將要列印的系統上重複整個步驟。



單擊 **完成**

安裝完成!

## D-Link 友訊科技 台灣分公司 技術支援資訊

如果您還有任何本使用手冊無法協助您解決的產品相關問題，台灣地區用戶可以透過我們的網站、電子郵件或電話等方式與D-Link台灣地區技術支援工程師聯絡。

### D-Link 免付費技術諮詢專線

0800-002-615

服務時間：週一至週五，早上8:30 到 晚上9:00

(不含周六、日及國定假日)

網 站：<http://www.dlink.com.tw>

電子郵件：[dssqa\\_service@dlink.com.tw](mailto:dssqa_service@dlink.com.tw)

如果您是台灣地區以外的用戶，請參考D-Link網站 全球各地分公司的聯絡資訊以取得相關支援服務。

產品保固期限、台灣區維修據點查詢，請參考以下網頁說明：

<http://www.dlink.com.tw>

產品維修：

使用者可直接送至全省聯強直營維修站或請洽您的原購買經銷商。

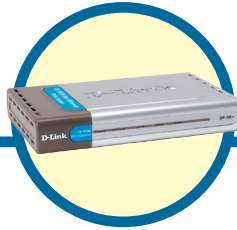
**D-Link®**  
Building Networks for People



**D-Link**

# Petunjuk Pemasangan Cepat

Produk ini bisa diseting menggunakan Web Browser yang ada sekarang seperti Internet Explorer 6 atau Netscape Navigator 7.0



**DP-300+**  
Fast Ethernet Multi-Port  
Print Server

## Sebelum Memulai

Anda membutuhkan perangkat yang mempunyai kartu jaringan Ethernet seperti sebuah laptop atau komputer desktop dan sebuah printer dengan port paralel atau port serial yang akan terhubung ke DP-300+.

**Penting : Matikan printer sebelum memasangnya ke DP-300+**

## Periksa Isi Paket Penjualan



**DP-300+Fast Ethernet Multi-Port Print Server**



**CD-ROM yang berisi program, petunjuk penggunaan dan garansi**



**5V DC, 2.5A Power Adapter**

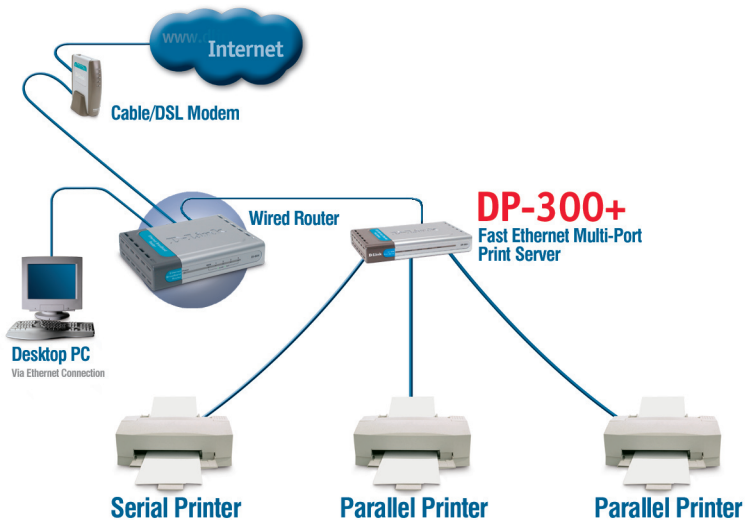
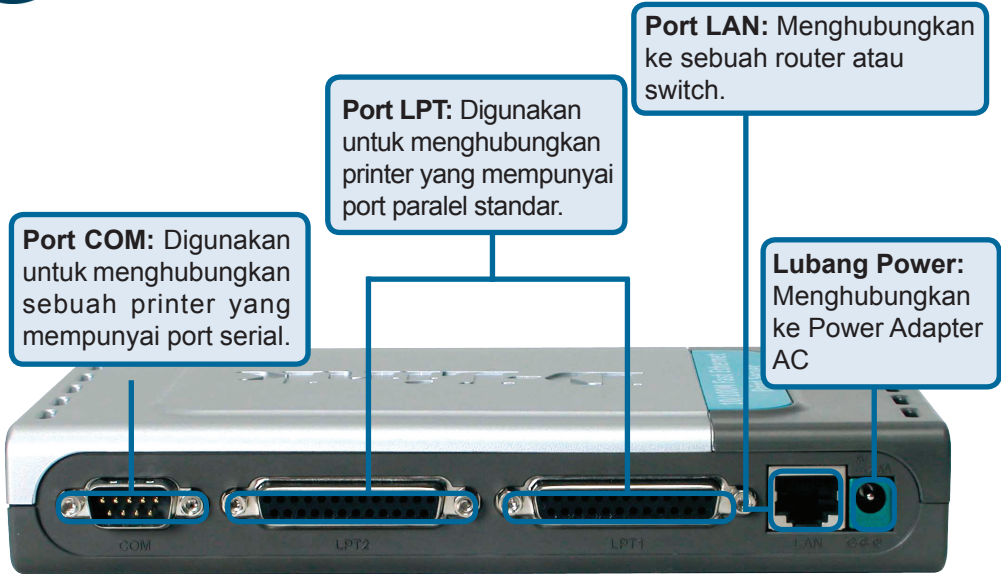


Menggunakan power supply yang tegangannya berbeda dengan power supply yang termasuk dalam paket ini dapat menyebabkan kerusakan dan akan membatalkan garansi produk ini.

Jika isi paket tidak lengkap, harap hubungi penjual.

# 1

## Menghubungkan DP-300+ ke jaringan anda



# 1

## Menghubungkan DP-300+ ke jaringan anda (Lanjutan)

**Catatan :** Jangan hidupkan DP-300+ sebelum ada perintah untuk menghidupkannya.



Untuk mencetak menggunakan Mac OS, silahkan melihat pada manual (.pdf) yang ada dalam CD-ROM.

- A. Masukkan salah satu ujung kabel Ethernet CAT5 straight-through ke port LAN pada DP-300+. Hubungkan ujung satunya lagi ke port Ethernet pada gateway atau switch anda.
- B. Pastikan bahwa Printer anda dalam keadaan OFF.
- C. Hubungkan salah satu ujung kabel printer ke port yang sesuai pada DP-300+ dan ujung satunya lagi ke printer anda.
- D. Hidupkan printer anda. Ulangi langkah B-D untuk setiap printer sebelum melanjutkan ke langkah E.
- E. Masukkan power adapter ke lubang power pada DP-300+ dan colok power adapter ke colokan listrik. DP-300+ akan hidup dan mulai melakukan pengetesan internal.

# 2

## Mengatur DP-300+

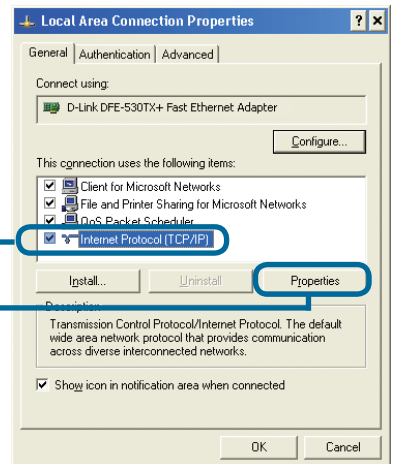
Untuk informasi tambahan mengenai seting sistem operasi Windows atau informasi pada manajemen antar muka berbasis web, silahkan melihat pada petunjuk penggunaan yang ada di CD.

Alamat IP default DP-300+ adalah 192.168.0.10. Untuk dapat terhubung ke printer melalui DP-300+, DP-300+ harus mempunyai alamat IP yang sama dengan jaringan anda. Anda dapat mengganti alamat IP dari DP-300+ untuk mencocokkan dengan skema alamat IP jaringan anda yang ada. Untuk mengakses konfigurasi berbasis web dari print server, masukkan alamat IP yang satu kelas dengan print server secara manual pada salah satu PC di jaringan anda.

Pergi ke **Start** > Klik Kanan pada **My Network Places** > Pilih Properties > Klik Kanan pada **Network Connection** yang terasosiasi dengan kartu jaringan anda dan pilih **Properties**.

Klik **Internet Protocol (TCP/IP)**

Klik **Properties**



# 2

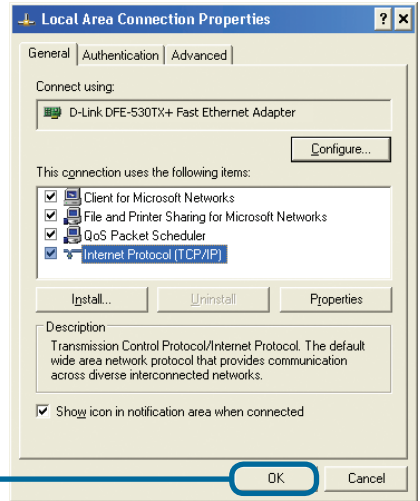
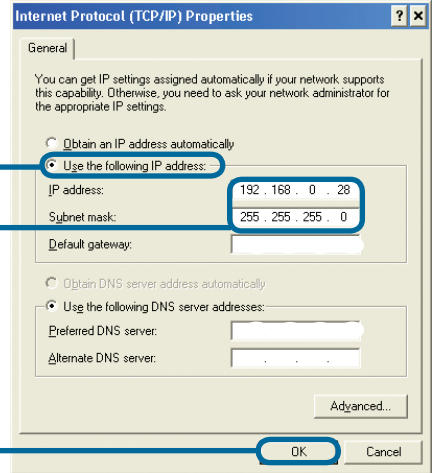
## Mengatur DP-300+ (Lanjutan)

Masukkan alamat IP statis yang berada dalam kelas yang sama dengan print server (192.168.0.xx)

Pilih **Use the following IP address**

IP address: **192.168.0.28**  
Subnet mask: **255.255.255.0**

Klik **OK**



Klik **OK** untuk mengaktifkan konfigurasi alamat IP

Buka **Web Browser** anda dan ketik **http://192.168.0.10** pada kotak alamat URL, kemudian tekan tombol Enter atau Return.



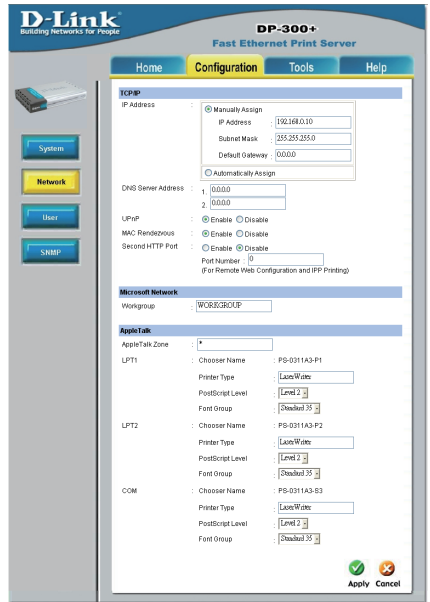


# 2

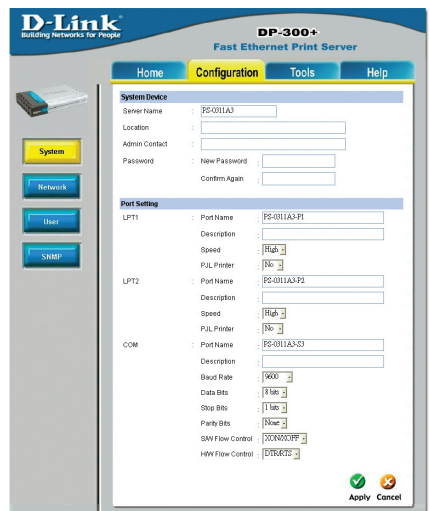
## Mengatur DP-300+ (Lanjutan)

Alamat IP pada DP-300+ dapat dimodifikasi pada bagian **Network** dibawah menu **Configuration**.

Petunjuk pemasangan cepat ini menggunakan alamat IP default dari print server sebagai contoh. Silahkan lakukan penyesuaian yang diperlukan jika anda merubah alamat IP dari DP-300+.



Pilih bagian **System** pada menu **Configuration** untuk melihat nama dari print server dan nama port. Jika anda mengganti nama-nama ini maka catat nama baru yang anda gunakan, informasi ini akan dibutuhkan pada saat Wizard menambah printer.

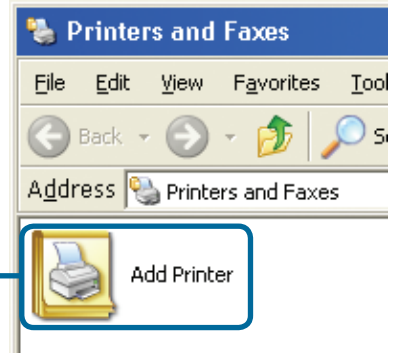


# 3

## Wizard menambah printer

Untuk Windows XP:

Pergi ke menu **Start > Configuration > Printers and Faxes > Add a Printer**

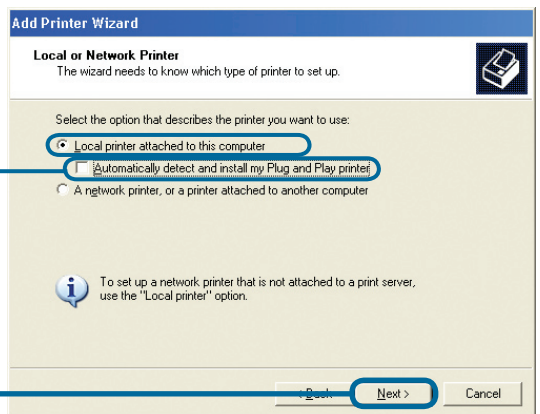


Klik dua kali pada simbol **Add Printer**



Klik **Next**

Pilih **Local Printer** dan non-aktifkan **Automatically detect and install my Plug and Play printer.**



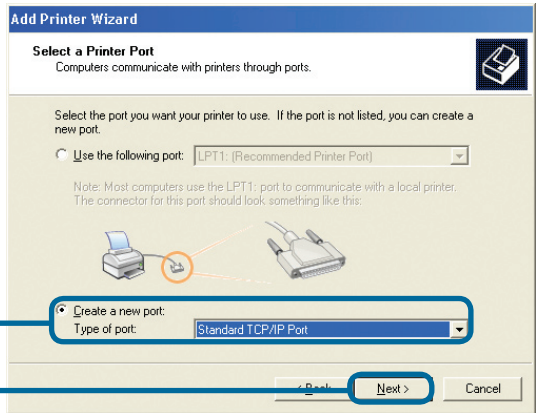
Klik **Next**

# 3

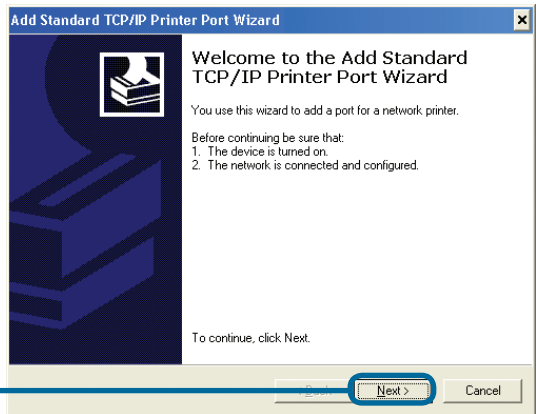
## Wizard menambah printer (Lanjutan)

Pilih **Create New Port** dan pada bagian menu drop-down, pilih **“Standard TCP/IP Port”**.

Klik **Next**



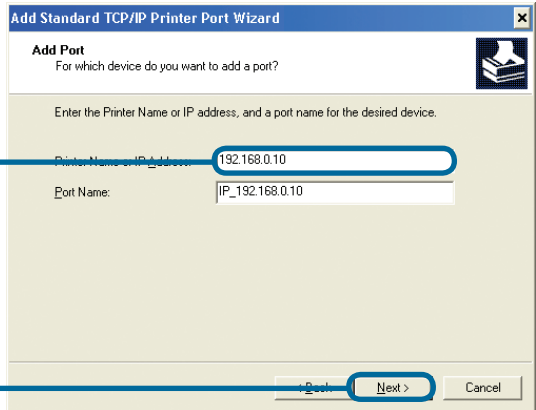
Klik **Next**



Ketik **192.168.0.10**

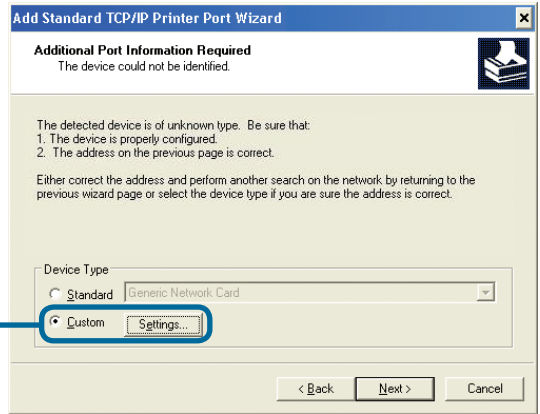
Nama Port akan otomatis terisi.

Klik **Next**



# 3

## Wizard menambah printer (Lanjutan)



Pilih **Custom** dan klik **Settings**

Pilih **LPR**

Masukkan nama **port** dari port yang digunakan oleh printer.

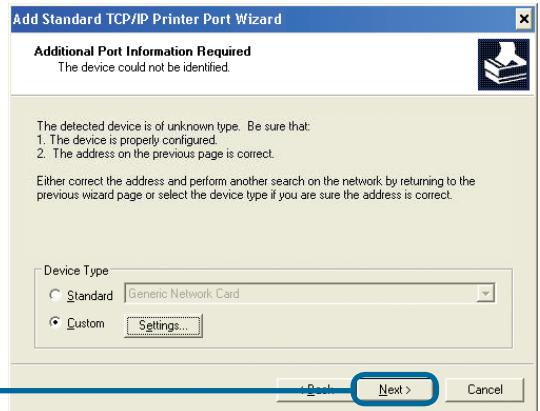
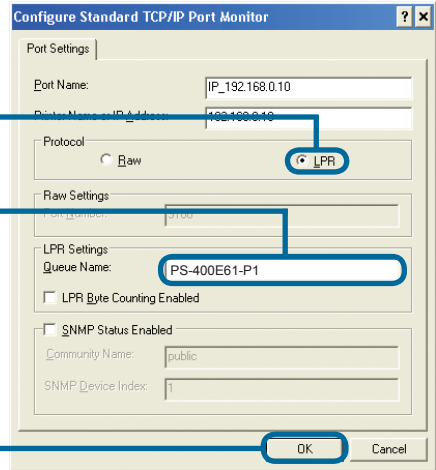
Nama default port berbeda dengan MAC ID perangkat:

**PS-xxxxxx-P1** (untuk Port 1 LPT)

**PS-xxxxxx-P2** (untuk Port 2 LPT)

**PS-xxxxxx-S3** (untuk Port COM)

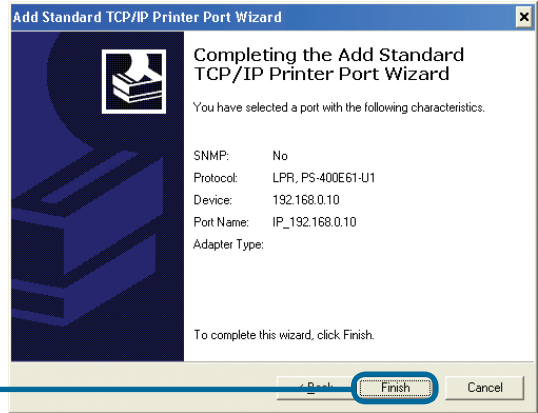
Klik **OK**



Klik **Next**

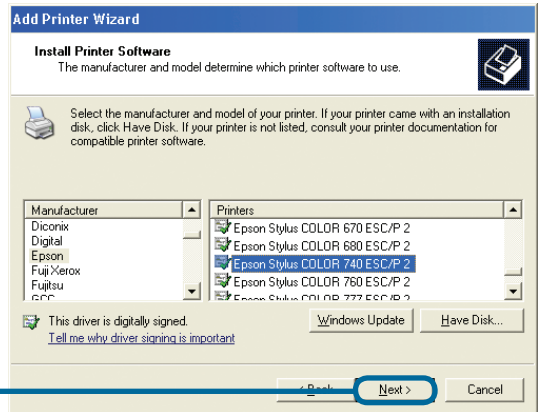
# 3

## Wizard menambah printer (Lanjutan)



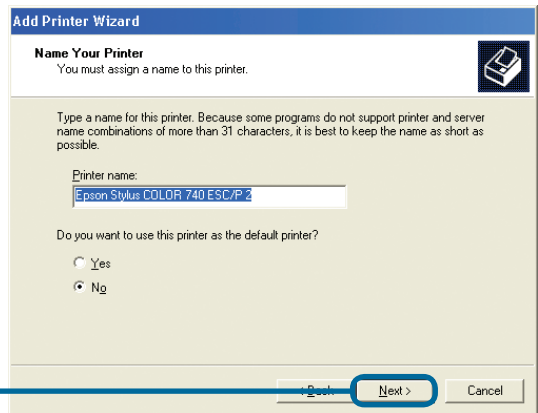
**Klik Finish**

Pada layar ini, cari pada daftar printer yang anda gunakan (jika tidak ada maka masukkan CD driver atau disket yang ada pada paket penjualan printer anda dan Klik Have Disk)



**Klik Next**

Nama printer dan seting printer default dapat diatur disini.



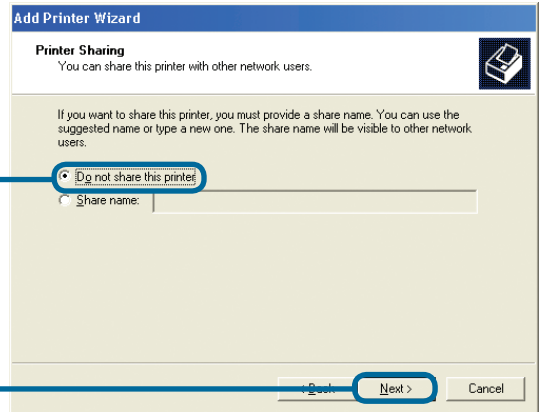
**Klik Next**

# 3

## Wizard menambah printer (Lanjutan)

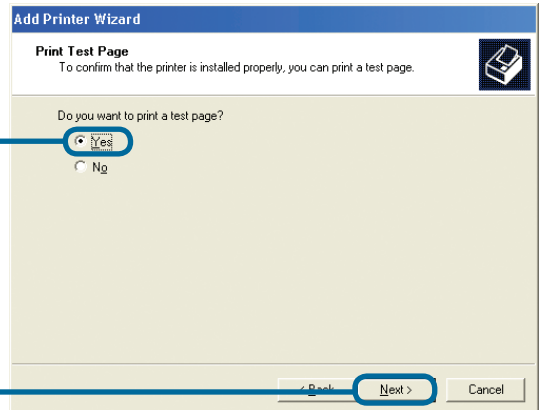
Dengan memilih tidak membagi printer, setiap sistem akan mencetak ke print server secara langsung.

**Pilih Do not share this printer**



**Klik Next**

**Pilih Yes** untuk mencetak halaman test

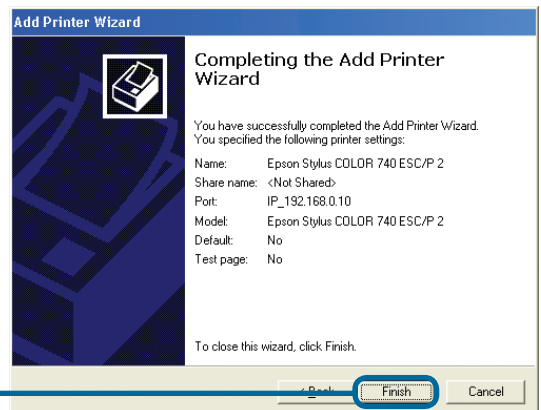


**Klik Next**

Klik Finish untuk menyelesaikan Wizard Menambah Printer.

Ulangi langkah Wizard Menambah Printer untuk setiap printer/port dan ulangi seluruh proses untuk setiap sistem yang ingin mencetak menggunakan print server.

**Klik Finish**



**Setup Anda sudah Selesai!**

## Dukungan Teknis

Update perangkat lunak dan dokumentasi pengguna dapat diperoleh pada situs web D-Link.

### Dukungan Teknis untuk pelanggan:

#### Dukungan Teknis D-Link melalui telepon:

Tel: +62-21-5731610

#### Dukungan Teknis D-Link melalui Internet:

Email : [support@dlink.co.id](mailto:support@dlink.co.id)

Website : <http://support.dlink.co.id>



