

# DPR-1260

Default IP: 192.168.0.10

Password: blank (nothing)

Product Page: DPR-1260 Hardware Version: A1 Firmware Version: 1.00

## D-Link

DPR-1260 // STATUS SCAN ADVANCED SETUP SUPPORT

DEVICE INFO

WIRELESS

WIRELESS NETWORKS

### DEVICE INFO

Displays helpful at-a-glance information about the print server and how it is currently configured. It also displays the printers attached to the print server. You may need to refresh the page to update the information.

### IDENTIFICATION

Server Name:	dlinkps-95bedd
IP Address:	192.168.10.253 (static)
MAC Address:	0000047F0000
Firmware:	1.00

### ATTACHED DEVICES

USB Port 1:	HP LaserJet 3015
Printer Status:	Ready
Raw TCP port:	9100
LPR Queue Name:	LaserJet3015
Scanner:	No Scanner Detected

### Helpful Hints..

**Identification:**

Server Name - The network name assigned to the print server.

IP Address - The print server's current IP address.

MAC Address - The print server's MAC address.

Firmware - This is the print server's current firmware version.

Internet

D-Link Print Server - Setup Printer Wizard - Microsoft Internet Explorer provided by D-Link Australia

File Edit View Favorites Tools Help

Back Search Links CRM RMA Tech

Address http://192.168.10.253/setup\_prnwiz.html Go

Product Page: DPR-1260 Hardware Version: A1 Firmware Version: 1.00

# D-Link

<b>DPR-1260</b> //	<b>STATUS</b>	<b>SCAN</b>	<b>ADVANCED</b>	<b>SETUP</b>	<b>SUPPORT</b>
--------------------	---------------	-------------	-----------------	--------------	----------------

**PRINT WIZARD**

NETWORK SETTINGS

WIRELESS SETTINGS

ADMINISTRATION

FIRMWARE

### WELCOME TO THE PRINTER SETUP WIZARD

This wizard will install a network-attached printer onto your computer. The wizard will guide you through the following steps. Click *Next* to begin.

- Step 1: Select a printer
- Step 2: Launch a setup executable on your computer
- Step 3: Insert the printer driver CD if requested
- Step 4: Print a test page

**NOTE:** You do not need to run this wizard to use a scanner -- simply browse to the [Scan](#) page.

#### Helpful Hints..

Use the WIZARD to setup a PC to be able to print through this Print Server.

If desired, run the wizard for each of printer attached to this Print Server.

It is NOT necessary to run this WIZARD to access the scanning function, simply click on the SCAN tab.

Internet

D-Link Print Server - Wireless - Microsoft Internet Explorer provided by D-Link Australia

File Edit View Favorites Tools Help

Back Forward Stop Home Search Go

Address http://192.168.10.253/status\_wl.html

Product Page: DPR-1260 Hardware Version: A1 Firmware Version: 1.00

# D-Link

DPR-1260	STATUS	SCAN	ADVANCED	SETUP	SUPPORT
----------	--------	------	----------	-------	---------

DEVICE INFO

WIRELESS

WIRELESS NETWORKS

**WIRELESS**

Displays helpful at-a-glance information about the print server's wireless configuration. You may need to refresh the page to update the information.

**WIRELESS STATUS**

Radio Status:	Searching for AP
SSID:	D-Link
Channel:	n/a
Transmit Rate:	n/a

**Helpful Hints..**

**Wireless Status:**

Radio Status - Displays the status of the print server being associated or disconnected from an access point.

SSID - Displays the wireless network the print server is associated with.

Channel - Displays the channel that the print server and access point are currently using.

Transmit Rate - Displays the current connection rate that the print server is currently connected at.

Internet


D-Link Print Server - Access Points - Microsoft Internet Explorer provided by D-Link Australia

File Edit View Favorites Tools Help

Back Forward Stop Home Search

Address [http://192.168.10.253/status\\_ap.html](http://192.168.10.253/status_ap.html) Go

Product Page: DPR-1260 Hardware Version: A1 Firmware Version: 1.00



**DPR-1260** // STATUS SCAN ADVANCED SETUP SUPPORT

DEVICE INFO  
WIRELESS  
WIRELESS NETWORKS

**WIRELESS NETWORKS**

The following wireless networks are currently within range of this print server.

**WIRELESS NETWORKS DISCOVERED**

MAC address	SSID	Channel
000F3DFDC46D:	- Not available -	1
0015E9795248:	testnet	1
001195DF6DE7:	- Not available -	1
041195DF6DE7:	- Not available -	1
001346BA11D8:	4300	6
0011959D723A:	G604T	6
000F3D28D7B7:	default	6
000F3D9CA0D6:	dsm	12
001195CCD567:	demoroom	11
001195DF6DEF:	- Not available -	11
041195DF6DEF:	- Not available -	11
00400527A8AE:	SCANNER	9
0013469A13A0:	- Not available -	13

Done Internet

D-Link Print Server - Scan - Microsoft Internet Explorer provided by D-Link Australia

File Edit View Favorites Tools Help

Back Forward Stop Search Links CRM RMA Tech

Address http://192.168.10.253/scan.html Go

Product Page: DPR-1260 Hardware Version: A1 Firmware Version: 1.00

# D-Link

DPR-1260 // STATUS SCAN ADVANCED SETUP SUPPORT

1 Select the location of the document to scan. Press *Preview Scan* to get a quick preview of the scanner bed contents. If you select *ADF*, also specify the document size.

**Scan Device**

**No Scanner Detected**

Scanner Bed  Automatic Document Feeder (ADF)

Document Size

2 Click and drag on the scanner bed preview window to select the area you wish to scan. Make any adjustments to resolution, color, and file format. Then press *Scan*.

Scan Area	Resolution	Example Use
<b>Size</b>	<input type="radio"/> Highest	Enlarged or cropped photo print
<input checked="" type="radio"/> Full Bed <input type="radio"/> Letter	<input checked="" type="radio"/> High	Photo print or slide presentation
<input type="radio"/> Executive <input type="radio"/> A4	<input type="radio"/> Medium	Web page image
<input type="radio"/> Custom	<input type="radio"/> Low	E-mail attachment
<input type="text" value="8.5x11.7"/> inches		
<b>Offset</b>	<input checked="" type="radio"/> Color	
<input type="text" value="0,0"/> inches	<input type="radio"/> Black & White	
<input checked="" type="radio"/> inches <input type="radio"/> mm		
<input type="button" value="Scan"/>	<b>File Format</b>	<b>Example Use</b>
	<input checked="" type="radio"/> JPEG	Scan bed or single-page ADF scan
	<input type="radio"/> PDF	Multi-page ADF scan

Preview Window

**WIRELESS**

Internet

D-Link Print Server - Advanced Print - Microsoft Internet Explorer provided by D-Link Australia

File Edit View Favorites Tools Help

Back Forward Stop Home Search

Links CRM RMA Tech

Address http://192.168.10.253/advanced\_print.html Go

Product Page: DPR-1260 Hardware Version: A1 Firmware Version: 1.00

# D-Link

DPR-1260	STATUS	SCAN	ADVANCED	SETUP	SUPPORT
PRINTING WIRELESS	<b>ADVANCED PRINTING</b> The following settings determine which printing protocols are enabled on the print server. The print server will listen for print jobs on the TCP ports associated with the enabled protocols.			<b>Helpful Hints..</b> <b>Printing Protocol:</b> Both protocols are enabled by default.  Raw TCP Port is the most common print method. This protocol uses TCP ports 9100-9103. Enable the protocol to communicate with an attached printer using the print server name and the unique TCP port number assigned to the printer.  LPR/LPD is more commonly used in Mac or Unix environments. This protocol uses TCP port 515. Enable the protocol to communicate with an attached printer using the print server name and the unique queue name assigned to the printer.	
	<b>PRINTING PROTOCOL</b> Raw TCP Port <input checked="" type="radio"/> Enable <input type="radio"/> Disable LPR/LPD <input checked="" type="radio"/> Enable <input type="radio"/> Disable <input type="button" value="Save"/> <input type="button" value="Cancel"/>				

Done Internet

D-Link Print Server - Advanced Wireless - Microsoft Internet Explorer provided by D-Link Australia

File Edit View Favorites Tools Help

Back Forward Stop Home Search

Address http://192.168.10.253/advanced\_wl.html

Product Page: DPR-1260 Hardware Version: A1 Firmware Version: 1.00

# D-Link

DPR-1260	STATUS	SCAN	ADVANCED	SETUP	SUPPORT
----------	--------	------	----------	-------	---------

PRINTING

WIRELESS

### ADVANCED WIRELESS

If you are not familiar with these Advanced Wireless settings, please read the help section before attempting to modify these settings.

### WIRELESS SETTINGS

Fragmentation threshold	<input type="text" value="2346"/>	(256..65535)
RTS threshold	<input type="text" value="2346"/>	(1..65535)
Burst time	<input type="text" value="0"/>	(0..65535)
Beacon period	<input type="text" value="100"/>	(1..65535)

### Helpful Hints..

#### Wireless Settings:

**Fragmentation Threshold -** Transmitted wireless packets larger than this size will be fragmented to maintain performance in noisy wireless networks. The valid range is 256..65535. Values larger than about 1560 will prevent fragmentation from taking place.

**RTS threshold -** Transmitted wireless packets larger than this size will use the RTS/CTS protocol to (a) maintain performance in noisy wireless networks and (b) prevent hidden nodes from degrading performance. The valid range is 1..65535. Values larger than about 1560 will prevent RTS/CTS from taking place.

**Burst time -** Set the time duration here for transmission burst mode, in microseconds. The valid range is 0..65535 with 0 to disable bursting. Burst mode can increase data throughput by occupying the channel for an extended duration. Typical values are in the range of several mill-seconds (ie.

Done Internet

D-Link Print Server - Setup Printer Wizard - Microsoft Internet Explorer provided by D-Link Australia

File Edit View Favorites Tools Help

Back Forward Stop Home Search

Links CRM RMA Tech

Address http://192.168.10.253/setup\_prnwiz.html Go

Product Page: DPR-1260 Hardware Version: A1 Firmware Version: 1.00

# D-Link

DPR-1260	STATUS	SCAN	ADVANCED	SETUP	SUPPORT
----------	--------	------	----------	-------	---------

PRINT WIZARD	<h3>WELCOME TO THE PRINTER SETUP WIZARD</h3> <p>This wizard will install a network-attached printer onto your computer. The wizard will guide you through the following steps. Click <i>Next</i> to begin.</p> <ul style="list-style-type: none"><li>• Step 1: Select a printer</li><li>• Step 2: Launch a setup executable on your computer</li><li>• Step 3: Insert the printer driver CD if requested</li><li>• Step 4: Print a test page</li></ul> <p><b>NOTE:</b> You do not need to run this wizard to use a scanner -- simply browse to the <a href="#">Scan</a> page.</p> <p><input type="button" value="Next"/> <input type="button" value="Cancel"/></p>	<h4>Helpful Hints..</h4> <p>Use the WIZARD to setup a PC to be able to print through this Print Server.</p> <p>If desired, run the wizard for each of printer attached to this Print Server.</p> <p>It is NOT necessary to run this WIZARD to access the scanning function, simply click on the SCAN tab.</p>
NETWORK SETTINGS		
WIRELESS SETTINGS		
ADMINISTRATION		
FIRMWARE		

Internet



D-Link Print Server - Setup Network - Microsoft Internet Explorer provided by D-Link Australia

File Edit View Favorites Tools Help

Back Forward Stop Home Search

Links CRM RMA Tech

Address http://192.168.10.253/setup\_net.html

Product Page: DPR-1260 Hardware Version: A1 Firmware Version: 1.00

# D-Link

DPR-1260	STATUS	SCAN	ADVANCED	SETUP	SUPPORT
----------	--------	------	----------	-------	---------

PRINT WIZARD

NETWORK SETTINGS

WIRELESS SETTINGS

ADMINISTRATION

FIRMWARE

### NETWORK SETUP

These are the settings of the LAN (Local Area Network) interface for the device. These settings may be referred to as "private settings". You may change the LAN IP address if needed. The LAN IP address is private to your internal network and cannot be seen on the Internet. The default IP address is 192.168.0.10 with a subnet mask of 255.255.255.0.

#### NETWORK SETTINGS

IP address mode  DHCP  Static

IP address

Subnet mask

Default gateway

#### Helpful Hints..

**Network Settings:**

IP address mode - Select "DHCP" to get the IP settings automatically from a DHCP server on your network. Select "Static" to use the IP settings specified below.

IP address - Type the desired "Static" IP address of the print server.

Subnet mask - The subnet mask specifies the network number portion of an IP address.

Default gateway - This is the IP address of the gateway that connects the network to the internet.

Internet

D-Link Print Server - Setup Wireless - Microsoft Internet Explorer provided by D-Link Australia

File Edit View Favorites Tools Help

Back Forward Stop Home Search

Links CRM RMA Tech

Address http://192.168.10.253/setup\_wl.html Go

Product Page: DPR-1260 Hardware Version: A1 Firmware Version: 1.00

# D-Link

DPR-1260	STATUS	SCAN	ADVANCED	SETUP	SUPPORT
----------	--------	------	----------	-------	---------

PRINT WIZARD

NETWORK SETTINGS

WIRELESS SETTINGS

ADMINISTRATION

FIRMWARE

### WIRELESS SETUP

From this page you can configure the print server to wirelessly connect to your LAN via an 802.11 (Wi-Fi) access point or router.

### WIRELESS SETTINGS

Wireless On/Off  ON  OFF

Wireless Network Name (SSID)

Wireless Mode  Infrastructure  Ad-hoc

Security Mode  None  WEP  WPA

### Helpful Hints..

Wireless On/Off - Enable/Disable the wireless radio.

Wireless Network Name (SSID) - Specify the name of the wireless access point that the print server should connect to.

Wireless Mode - Select *Infrastructure* to connect to a LAN via a wireless Access Point (AP). Select *Ad-hoc* to connect directly to a Wi-Fi enabled workstation/laptop.

Security Mode - Select the security protocol used to encrypt data transmitted over the wireless connection. WPA is more secure than WEP, but not all access points support WPA.

Internet

D-Link Print Server - Setup Device Control - Microsoft Internet Explorer provided by D-Link Australia

File Edit View Favorites Tools Help

Back Forward Stop Home Search

Links CRM RMA Tech

Address http://192.168.10.253/setup\_dc.html Go

Product Page: DPR-1260 Hardware Version: A1 Firmware Version: 1.00

# D-Link

DPR-1260	STATUS	SCAN	ADVANCED	SETUP	SUPPORT
----------	--------	------	----------	-------	---------

PRINT WIZARD

NETWORK SETTINGS

WIRELESS SETTINGS

ADMINISTRATION

FIRMWARE

### ADMINISTRATION

From this page you can set the print server's password, reboot, or restore to defaults.

### SECURITY

New Password:

Confirm Password:

Save Cancel

### ADMINISTRATION

Clicking the button below will immediately reboot the print server. A reboot is required before any configuration changes you have made will take affect.

Reboot

Clicking the button below will reset all configuration options to their factory default values and reboot the device.

Reset Configuration

**Note:** The IP address of the device will also be reset to **192.168.0.10**. It may be necessary to change the address in your browser to access this device again.

Internet

D-Link Print Server - Setup Firmware - Microsoft Internet Explorer provided by D-Link Australia

File Edit View Favorites Tools Help

Back Forward Stop Home Search Links CRM RMA Tech

Address http://192.168.10.253/setup\_fw.html Go

Product Page: DPR-1260 Hardware Version: A1 Firmware Version: 1.00

# D-Link

<b>DPR-1260</b> //	<b>STATUS</b>	<b>SCAN</b>	<b>ADVANCED</b>	<b>SETUP</b>	<b>SUPPORT</b>
--------------------	---------------	-------------	-----------------	--------------	----------------

PRINT WIZARD  
NETWORK SETTINGS  
WIRELESS SETTINGS  
ADMINISTRATION  
FIRMWARE

## FIRMWARE UPGRADE

From this page you can update the version of firmware.

### FIRMWARE UPGRADE

To upgrade the firmware, enter the name of the firmware upgrade file and click on the upgrade button below.

Upgrade File:

The upgrade may take up to 60 seconds.

Done Internet

D-Link Print Server - Support - Microsoft Internet Explorer provided by D-Link Australia

File Edit View Favorites Tools Help

Back Forward Stop Home Search

Links CRM RMA Tech

Address <http://192.168.10.253/support.html> Go

Product Page: DPR-1260 Hardware Version: A1 Firmware Version: 1.00

# D-Link

DPR-1260	STATUS	SCAN	ADVANCED	SETUP	SUPPORT
----------	--------	------	----------	-------	---------

CONTACT US

SUPPORTED DEVICES

### SUPPORT CONTACT INFORMATION

<http://support.dlink.com>

D-Link's website contains the latest user documentation and software updates for D-Link products. U.S. and Canadian customers can contact D-Link Technical Support through our website or by phone.

**United States**  
**Telephone**  
(877) 453-5465  
Twenty four hours a day, seven days a week.  
**World Wide Web**  
<http://support.dlink.com>  
**E-mail**  
[support@dlink.com](mailto:support@dlink.com)

**Canada**  
**Telephone**  
(800) 361-5265  
Monday through Friday, 7:30am to 9:00pm EST.  
**World Wide Web**  
<http://support.dlink.ca>  
**E-mail**  
[support@dlink.ca](mailto:support@dlink.ca)

Internet

D-Link Print Server - Supported Devices - Microsoft Internet Explorer provided by D-Link Australia

File Edit View Favorites Tools Help

Back Search Links CRM RMA Tech

Address http://192.168.10.253/support\_dev.html Go

Product Page: DPR-1260 Hardware Version: A1 Firmware Version: 1.00

# D-Link

DPR-1260	STATUS	SCAN	ADVANCED	SETUP	SUPPORT
----------	--------	------	----------	-------	---------

CONTACT US

**SUPPORTED DEVICES**

**SUPPORTED DEVICES**

<p><b>Hewlett Packard Printers</b></p> <p>DeskJet 3520, 3550, 3650</p> <p>DeskJet 5150</p> <p>DeskJet 5650, 5850</p> <p>InkJet 1200D, 1100DTN</p> <p>LaserJet 1012, 1022n, 1150, 1160, 1300, 1315, 1320</p> <p>LaserJet 3015, 3020, 3030</p> <p>OfficeJet 4110, 4215</p> <p>OfficeJet 5505, 5510</p> <p>OfficeJet 6110, 6122, 6127</p> <p>OfficeJet 6210xi</p> <p>OfficeJet 7110, 7130</p> <p>OfficeJet 7210</p> <p>PhotoSmart 145, 245, 325, 375</p> <p>PhotoSmart 7260</p> <p>PhotoSmart 7660, 7755, 7760, 7960</p> <p>PSC 1210</p> <p>PSC 1350</p> <p>PSC 1410, 1510</p> <p>PSC 1600, 1610</p> <p>PSC 2175</p> <p>PSC 2410, 2510, 2350, 2355</p>	<p><b>Canon Printers</b></p> <p>CP-200, CP-330</p> <p>i350</p> <p>i455, i475D</p> <p>i560</p> <p>i70</p> <p>i80</p> <p>i860</p> <p>i900D</p> <p>i960</p> <p>MP390</p>	<p><b>Epson Printers</b></p> <p>Stylus 1280</p> <p>Stylus C44, C64, C84</p> <p>Stylus C66, C86</p> <p>Stylus R200, R300, R300M, R320</p> <p>Stylus R800</p> <p>Stylus 800, 810, 820, 825, 830, 830U, 850, 860</p> <p>Stylus 875dc, 875dcs, 870, 880, 890</p> <p>Stylus 900, 925, 960</p>	<p><b>Samsung Printers</b></p> <p>ML-1710, ML-1740</p>	<p><b>Brother Printers</b></p> <p>DCP 1000, DCP 1400</p> <p>HL-1435, HL-1440</p> <p>HL-5040, HL-5140, 5150D</p>
---	---	--	--	---

**Helpful Hints..**

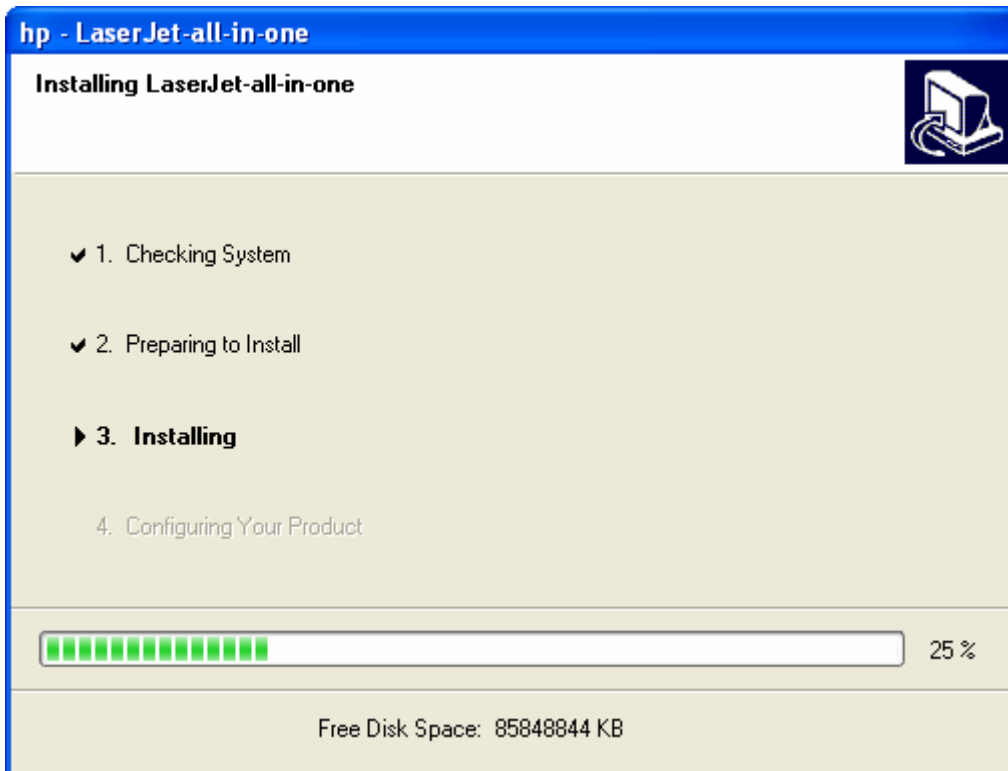
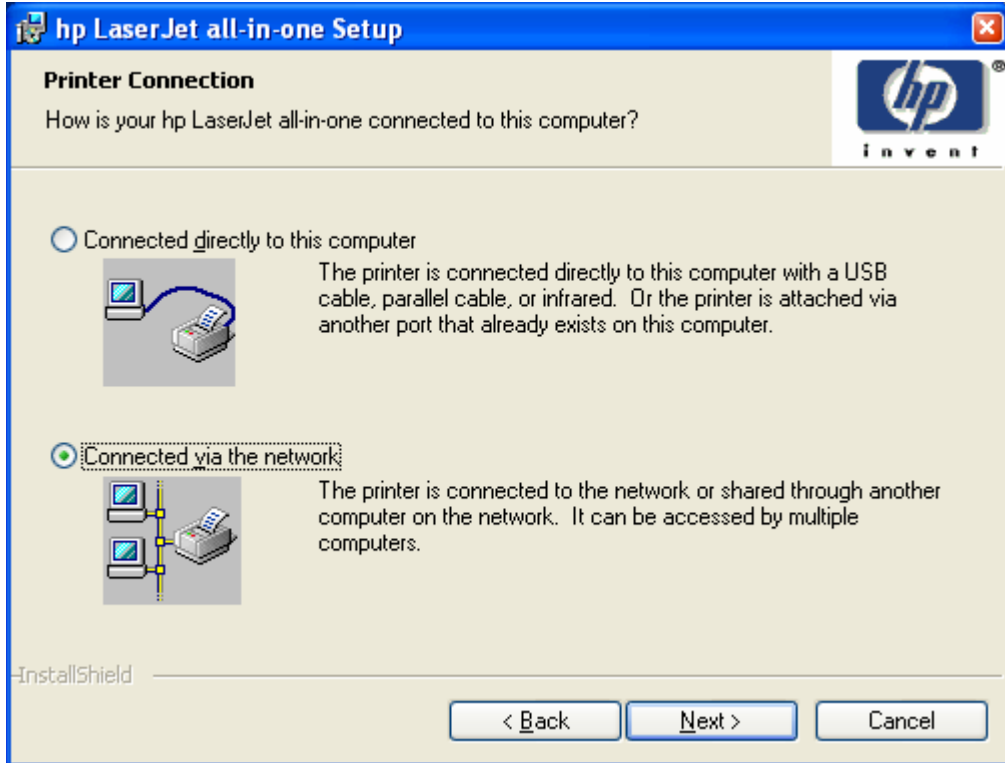
**Printers:**

Newer printers from supported manufacturers may be compatible. Use the Wizard to see if the new printer can be installed and used.

Done Internet

## SETUP:

### Install Printer Drivers:



D-Link Print Server - Setup Printer Wizard - Microsoft Internet Explorer provided by D-Link Australia

File Edit View Favorites Tools Help

Back Forward Stop Home Search Links CRM RMA Tech

Address http://192.168.10.253/setup\_prnwiz.html Go

Product Page: DPR-1260 Hardware Version: A1 Firmware Version: 1.00

# D-Link

DPR-1260	STATUS	SCAN	ADVANCED	SETUP	SUPPORT
PRINT WIZARD NETWORK SETTINGS WIRELESS SETTINGS ADMINISTRATION FIRMWARE	<b>WELCOME TO THE PRINTER SETUP WIZARD</b> <p>This wizard will install a network-attached printer onto your computer. The wizard will guide you through the following steps. Click <i>Next</i> to begin.</p> <ul style="list-style-type: none"><li>• Step 1: Select a printer</li><li>• Step 2: Launch a setup executable on your computer</li><li>• Step 3: Insert the printer driver CD if requested</li><li>• Step 4: Print a test page</li></ul> <p><b>NOTE:</b> You do not need to run this wizard to use a scanner -- simply browse to the <a href="#">Scan</a> page.</p> <p>Next Cancel</p>			<b>Helpful Hints..</b> <p>Use the WIZARD to setup a PC to be able to print through this Print Server.</p> <p>If desired, run the wizard for each of printer attached to this Print Server.</p> <p>It is NOT necessary to run this WIZARD to access the scanning function, simply click on the SCAN tab.</p>	

Internet



D-Link Print Server - Setup Printer Wizard - Microsoft Internet Explorer provided by D-Link Australia

File Edit View Favorites Tools Help

Back Forward Stop Search

Address: http://192.168.10.253/setup\_prnwiz.html

Product Page: DPR-1260 Hardware Version: A1 Firmware Version: 1.00

# D-Link

DPR-1260	STATUS	SCAN	ADVANCED	SETUP	SUPPORT
----------	--------	------	----------	-------	---------

PRINT WIZARD

NETWORK SETTINGS

WIRELESS SETTINGS

ADMINISTRATION

FIRMWARE

### STEP 1: SELECT A PRINTER

The following printers have been detected. Select the printer you wish to install onto your computer, then click *Next*.

- USB Port 1**  
**Manufacturer :** Hewlett-Packard  
**Model :** hp LaserJet 3015
- USB Port 2**  
No Printer Detected
- USB Port 3**  
No Printer Detected
- USB Port 4**  
No Printer Detected

**NOTE:** If the printer you wish to use is attached to the Ethernet port of the print server, exit this wizard and run the installation software that came with that printer.

#### Helpful Hints..

Use the WIZARD to setup a PC to be able to print through this Print Server.

If desired, run the wizard for each of printer attached to this Print Server.

It is NOT necessary to run this WIZARD to access the scanning function, simply click on the SCAN tab.

Done Internet

D-Link Print Server - Setup Printer Wizard - Microsoft Internet Explorer provided by D-Link Australia

File Edit View Favorites Tools Help

Back Forward Stop Home Search

Address [http://192.168.10.253/setup\\_prnwiz.html](http://192.168.10.253/setup_prnwiz.html) Go

Product Page: DPR-1260 Hardware Version: A1 Firmware Version: 1.00


# D-Link


DPR-1260	STATUS	SCAN	ADVANCED	SETUP	SUPPORT
PRINT WIZARD NETWORK SETTINGS WIRELESS SETTINGS ADMINISTRATION FIRMWARE	<b>STEP 2: LAUNCH THE SETUP EXECUTABLE ON YOUR COMPUTER</b>  When the File Download dialog appears, click <i>Run</i> .  After clicking <i>Next</i> , you will be asked for permission to download an executable file. Please click <i>Run/Open</i> to allow the executable to run on your computer. If a second window appears prompting you to verify the publisher, please click <i>Run</i> again.  <input type="button" value="Prev"/> <input type="button" value="Next"/> <input type="button" value="Cancel"/>			<b>Helpful Hints..</b>  Use the WIZARD to setup a PC to be able to print through this Print Server.  If desired, run the wizard for each of printer attached to this Print Server.  It is NOT necessary to run this WIZARD to access the scanning function, simply click on the SCAN tab.	

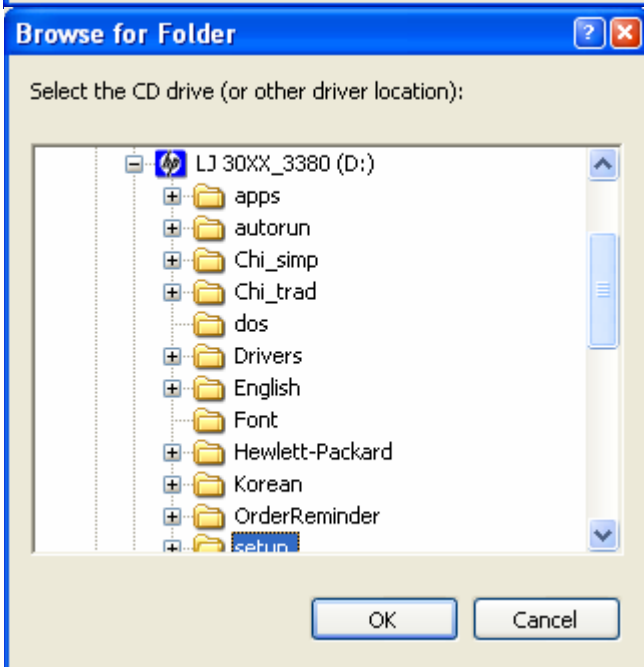
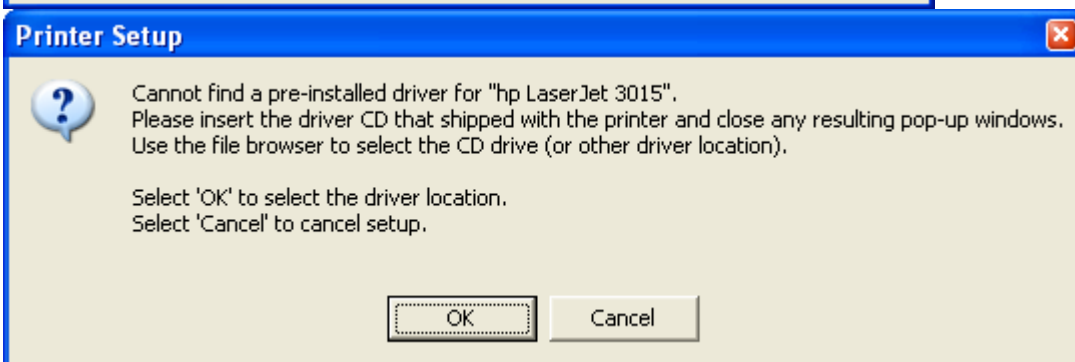
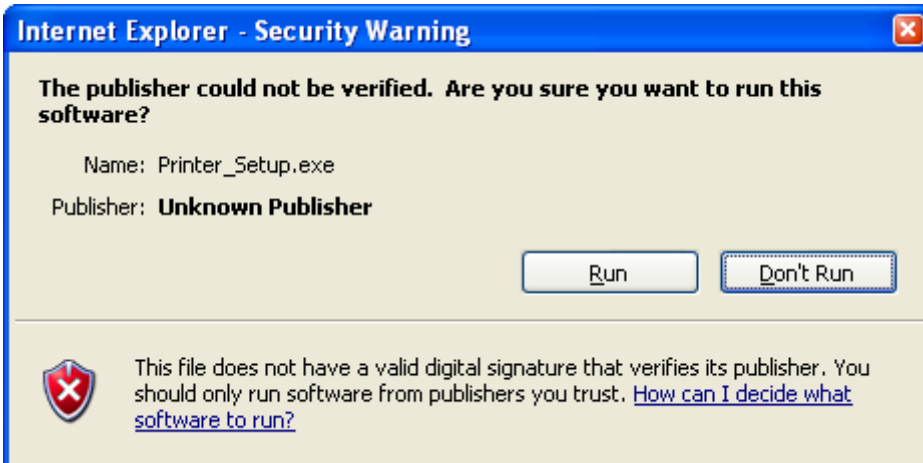
Done Internet

**File Download - Security Warning**

**Do you want to run or save this file?**

 Name: Printer\_Setup.exe  
Type: Application  
From: 192.168.10.253

 While files from the Internet can be useful, this file type can potentially harm your computer. If you do not trust the source, do not run or save this software. [What's the risk?](#)




D-Link Print Server - Server Information - Microsoft Internet Explorer provided by D-Link Australia

File Edit View Favorites Tools Help

Back Forward Stop Home Search

Address http://192.168.10.253/status\_server.html

Product Page: DPR-1260 Hardware Version: A1 Firmware Version: 1.00



DPR-1260	STATUS	SCAN	ADVANCED	SETUP	SUPPORT																		
<p>DEVICE INFO</p> <p>WIRELESS</p> <p>WIRELESS NETWORKS</p>	<p><b>DEVICE INFO</b></p> <p>Displays helpful at-a-glance information about the print server and how it is currently configured. It also displays the printers attached to the print server. You may need to refresh the page to update the information.</p> <p><b>IDENTIFICATION</b></p> <table border="1"> <tr><td>Server Name:</td><td>dlinkps-95bedd</td></tr> <tr><td>IP Address:</td><td>192.168.10.253 (static)</td></tr> <tr><td>MAC Address:</td><td>0000047F0000</td></tr> <tr><td>Firmware:</td><td>1.00</td></tr> </table> <p><b>ATTACHED DEVICES</b></p> <table border="1"> <tr><td>USB Port 1:</td><td>HP LaserJet 3015</td></tr> <tr><td>Printer Status:</td><td>Ready</td></tr> <tr><td>Raw TCP port:</td><td>9100</td></tr> <tr><td>LPR Queue Name:</td><td>LaserJet3015</td></tr> <tr><td>Scanner:</td><td>No Scanner Detected</td></tr> </table>	Server Name:	dlinkps-95bedd	IP Address:	192.168.10.253 (static)	MAC Address:	0000047F0000	Firmware:	1.00	USB Port 1:	HP LaserJet 3015	Printer Status:	Ready	Raw TCP port:	9100	LPR Queue Name:	LaserJet3015	Scanner:	No Scanner Detected				<p><b>Helpful Hints..</b></p> <p><b>Identification:</b></p> <p>Server Name - The network name assigned to the print server.</p> <p>IP Address - The print server's current IP address.</p> <p>MAC Address - The print server's MAC address.</p> <p>Firmware - This is the print server's current firmware version.</p>
Server Name:	dlinkps-95bedd																						
IP Address:	192.168.10.253 (static)																						
MAC Address:	0000047F0000																						
Firmware:	1.00																						
USB Port 1:	HP LaserJet 3015																						
Printer Status:	Ready																						
Raw TCP port:	9100																						
LPR Queue Name:	LaserJet3015																						
Scanner:	No Scanner Detected																						

Internet