

DSL-200 Installation Guide for Telecom New Zealand

***DSL-200
Quickstart Guide***

Installation and setup for a single computer

DOCUMENT # HERE

Introduction

This guide is intended as an installation guide for anyone who wishes to have the DSL-200 ADSL Modem up and running quickly. This is not a thorough text describing all the functions and capabilities of the Modem. For a more complete discussion of the Modem and its functions, please refer to The User's Guide located on the CD-ROM disc.

The Modem installs easily. Most of the procedure is done automatically. You must first install the software driver used by the Modem, then you are prompted to connect the device to your computer using the USB cable provided for you. Once the driver is installed, you then must connect to the ISP with a dial-up procedure. The entire installation and dial-up procedures are described and illustrated in this guide.

The establishment of initial connection to the ADSL service provider's central office may take a few moments. Once you are connected however there is no need to reestablish the connection unless you choose to terminate it.

System Requirements

The Modem can be installed on any IBM compatible Pentium PC with a minimum of 32MB of RAM running Microsoft® Windows® 98/98SE, Windows 2000 or Windows Me operating systems.

Additional Requirements

VPI/VCI Values

Your ADSL service provider will provide information that you will need to configure the Modem. The **VPI** (Virtual Path Identifier) and **VCI** (Virtual Circuit Identifier) numbers are used to define a dedicated pathway (called a Permanent Virtual Circuit or PVC) used for your ADSL service. Be sure to have this information handy before you begin the installation.

VPI	VCI
-----	-----

Micro-filters

Since ADSL and telephone services share the same copper wire to carry their respective signals, you may need to install a micro-filter (low pass filter) device for each telephone that shares the line with the ADSL line. Micro-filters are easy to install in-line devices, which attach to the telephone cable between the telephone and wall jack.

USB Port

In addition to the Windows OS, you will need a USB (Universal Serial Bus) port on your computer. These are commonly installed on newer computers (usually directly on the motherboard), however older PCs may require an additional installation.

User Name and Password

Your ADSL service provider or ISP will assign a User Name and Password for your account. You need to enter these during the dial-up procedure to connect to their network and the Internet. You can write these in the space provided if you wish. Keep this information in a safe place and do not reveal it to anyone.

User Name
Password

Packing List

In addition to this Quick Installation Guide, the contents of DSL-200 box should include the following items:

1. D-Link DSL-200 USB Modem
2. USB cable
3. ADSL cable or connector
4. Installation CD-ROM
5. User's Guide

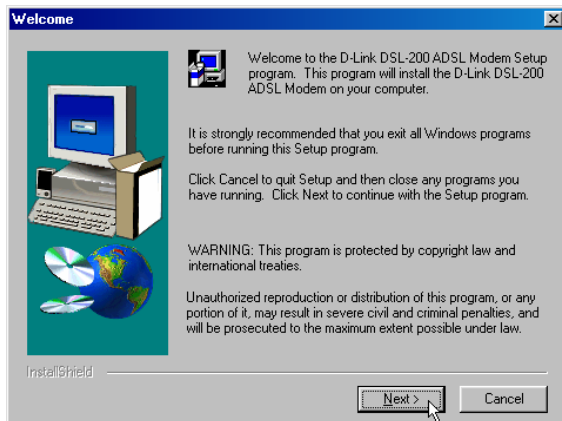
Install Modem

Before starting the software setup process, exit all Windows applications currently opened on your PC. The software installation procedure is identical for the Windows 98/98SE, Windows Me, and Windows 2000, and is therefore described in the same section.

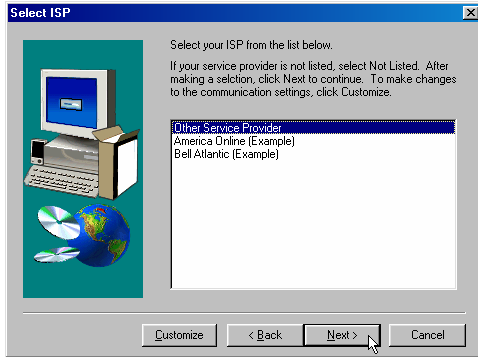
DO NOT CONNECT THE USB CABLE. You must install the software driver before you connect the device to your computer via the USB cable. You will be prompted to connect the device during the installation. Connecting the USB cable at this point will initiate the *Found New Hardware* process.

Install Modem Driver

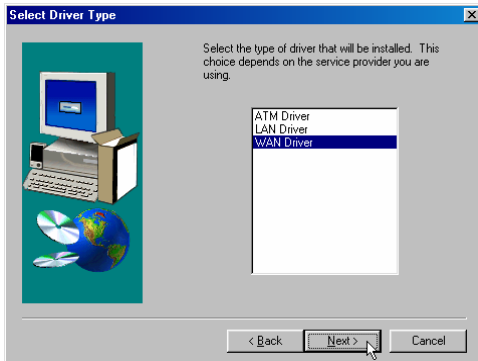
1. Insert the DSL-200 Installation CD into the CD-ROM drive. Double-click on My Computer icon located on your desktop. Double-click on the CD-ROM icon.
2. Double-click **Setup.exe** to start the installation procedure. A notification message will appear indicating that the setup process has begun.
3. The **Welcome** window recommends that you exit all other programs before you run the Setup program. Make sure you have quit all other programs and click **Next**.



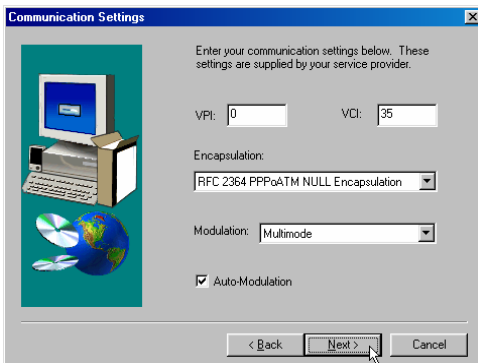
4. In the **Select ISP** window, select 'Other Service Provider' then click **Next**.



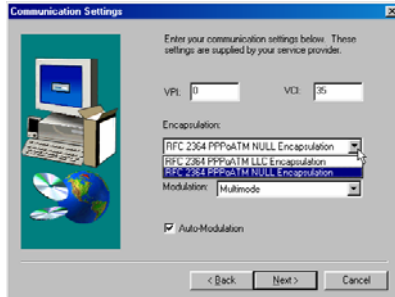
5. In the **Select Driver Type** window, choose 'WAN Driver' and click **Next**.



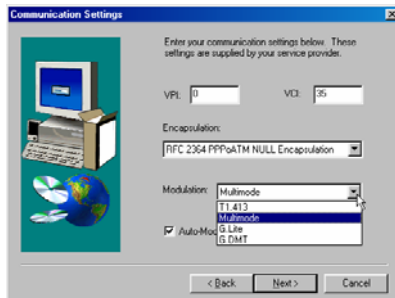
6. In the **Communication Settings** window you must provide the PVC settings, encapsulation method and modulation method for configuring the Modem. Type in the VPI and VCI values in their respective fields.



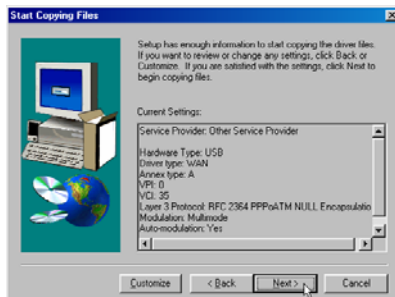
7. In the same window, select the proper Encapsulation method using the drop-down menu. Please contact your service provider for the appropriate Encapsulation settings. There are two possible settings, RFC 2364 PPPoATM LLC Encapsulation or RFC 2364 PPPoATM NULL Encapsulation. If your ADSL service provider does not specify one, use the default setting (RFC 2364 PPPoATM NULL Encapsulation).



8. Again in the same window, select the proper Modulation settings using the drop-down menu. Please contact your service provider for the appropriate Modulation settings. There are four possible settings from which to choose, T1.413, Multimode (suitable for Alcatel's and ADI's non-standard T1.413), G.Lite and G.DMT. Click **Next** to continue.



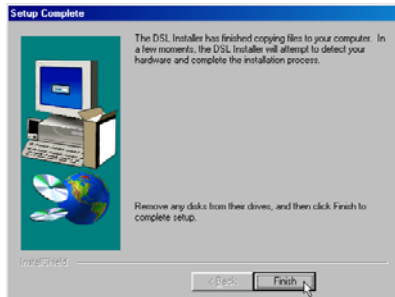
9. The **Start Copying Files** window appears. Click **Next** to copy the needed driver files.



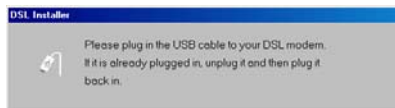
Note: For Windows 2000 applications, the "Digital Signature Not Found" window may appear warning that the installation software is not a digitally signed version. A digital signature is not necessary; D-Link has

tested the software with Windows 2000. Click **Yes** to allow the installation to continue.

10. In the **Setup Complete** window, click **Finish**.



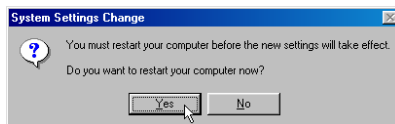
11. The **DSL Installer** window asks you to plug in the Modem. Plug the rectangular end of the USB cable into the USB port of your PC, and then plug the square end of the USB cable into the USB port of the ADSL Modem. The USB Modem will be detected and messages will be displayed as the modem software is installed.



*Note: For Windows 2000 applications, the “Digital Signature Not Found” window will appear again. Click **Yes** to allow the installation to continue.*

For Windows 2000 applications, the “Found New Hardware Wizard” window indicates the modem has been installed and suggests you reboot the system to have new settings take effect. Click **Finish**.

12. You now need to restart the computer to complete the installation of the driver. You may do this now by clicking **Yes**.



A new icon (two arrows) appears in the System Tray on your desktop. See the last section for a description of the icon.

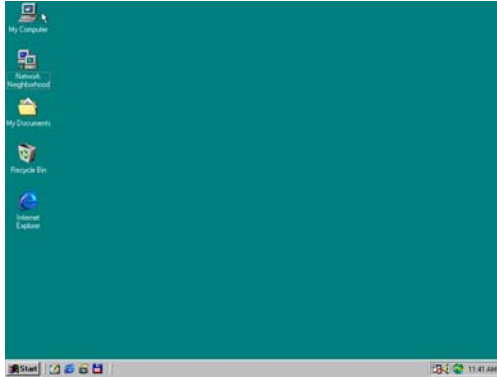
Dial-Up Internet

You are now ready to connect to the Internet by way of the ISP's network. The Dial-Up process will be familiar to anyone who has installed a conventional modem. The main difference with an ADSL modem is there is no actual dial up performed by the Modem.

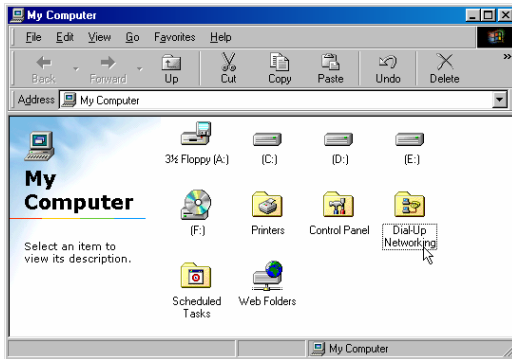
The Procedures for the different operating systems differ slightly so each system is presented in its own section.

Dial-Up Connection for Windows 98

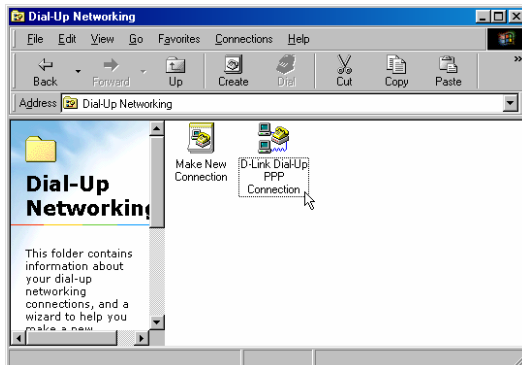
1. From the Windows desktop double-click on the My Computer icon.



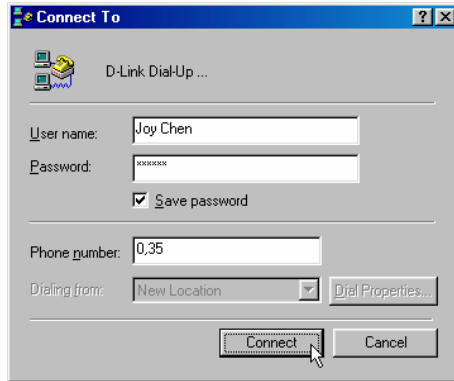
2. In the My Computer folder double-click the Dial-Up Networking folder.



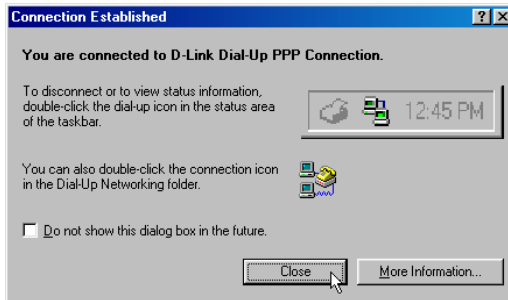
3. In the Dial-Up Networking folder double-click the D-Link Dial-Up PPP Connection icon.



4. In the **Connect To** window type in the correct User name and Password given to you by your ADSL service provider or ISP. Select the "Save password" check box, if you don't want to retype the password next time. The Phone number field will display the VPI/VCI values you entered earlier, **be sure not to modify it**. Click **Connect**. It may take a few seconds for the connection to be established.

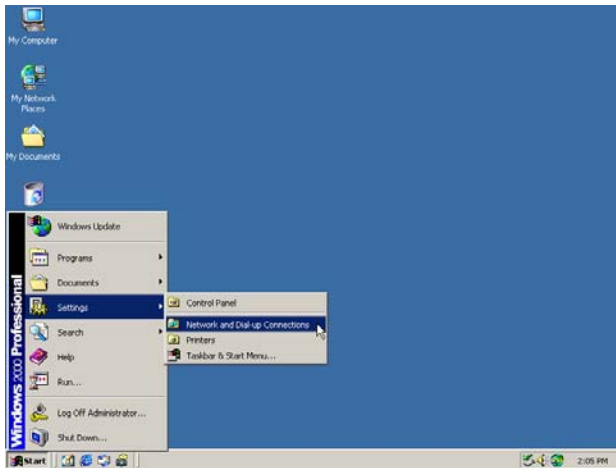


5. Once the negotiation of the ADSL connection is complete, the **Connection Established** window will appear. Click **Close**. You may now launch your web browser to access the Internet.

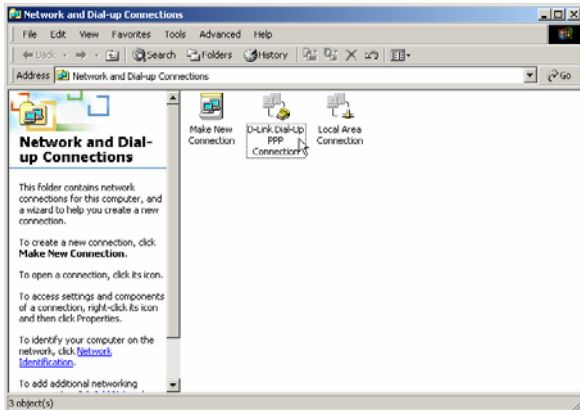


Dial Up Connection for Windows 2000

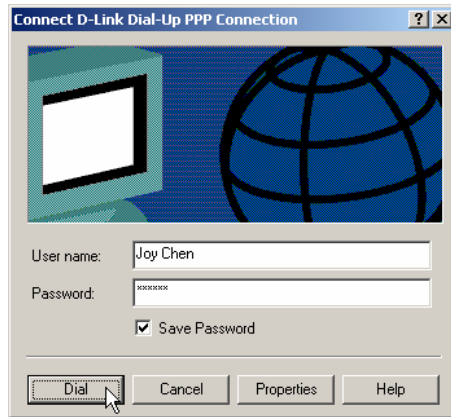
1. From the Start Menu on your desktop, bring the cursor to the Settings icon and then to the Control Panel folder. Double-click on the Network and Dial-up Connection folder.



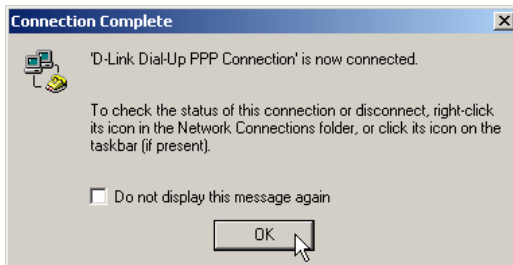
2. Double-click on the D-Link Dial-Up PPP Connection icon.



3. In the **Connect D-Link Dial-Up PPP Connection** window type in the correct User name and Password given to you by your ADSL service provider or ISP. Select the “Save password” check box, if you don’t want to retype the password next time. Click **Dial**. It may take a few seconds for the connection to be established.

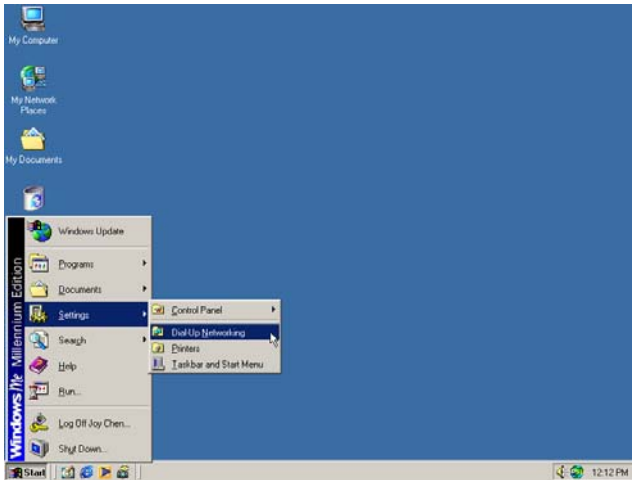


4. Once the negotiation of the ADSL connection is complete, the **Connection Complete** window will appear. Click **OK**. You may now launch your web browser to access the Internet.

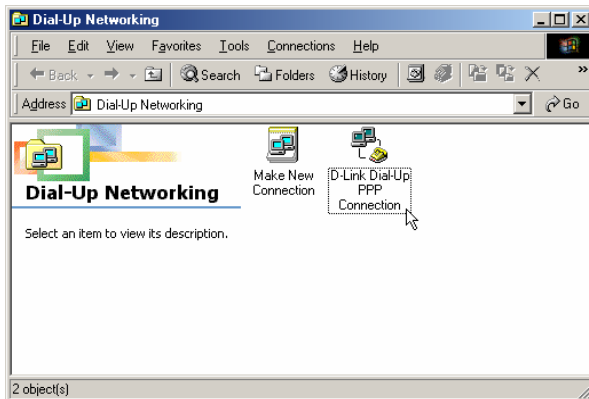


Dial Up Connection for Windows Me

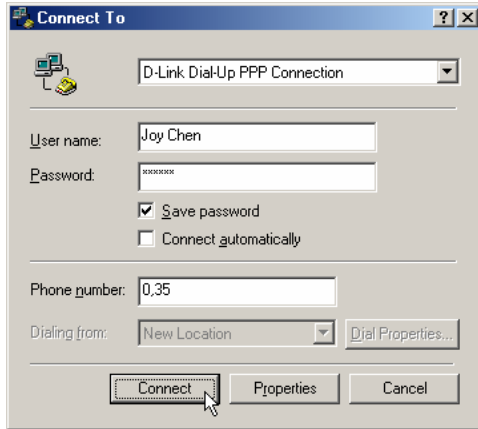
1. From the Start Menu on your desktop, bring the cursor to the Settings icon and then to the Control Panel folder. Double-click on the Network and Dial-up Connection folder.



2. Double-click on the D-Link Dial-Up PPP Connection icon.



- In the **Connect To** window, select "D-Link Dial-Up PPP Connection" from the pull-down menu and type in the correct User name and Password given to you by your ADSL service provider or ISP. Select the "Save password" check box, if you don't want to retype the password next time. The Phone number field will display the VPI/VCI values you entered earlier, **be sure not to modify it**. Click **Dial**. It may take a few seconds for the connection to be established.









- Once the negotiation of the ADSL connection is complete, the **Connection Established** window will appear. Click **Close**. You may now launch your web browser to access the Internet.



Desktop Monitoring

A new icon will appear in the System Tray of your desktop. These colored arrows will help you monitor the status of your ADSL connection. The table below summarizes how to interpret the icon indicator.

System Tray Icon	ADSL Status
 	Training Both arrows will alternate yellow and brown in color while during the negotiation of the ADSL connection
	Connection Established Both arrows appear dark green when the connection has been establish (and no data is being passed in either direction)
	Transmitting Data The Up arrow appears light green when data is being transmitted
	Receiving Data The Down arrow appears light green when data is being transmitted
	Error Two red arrows indicate an error has occurred. The connection may have been lost.