



Welcome ✖



 Welcome to the D-Link DSL-200 ADSL Modem Setup program. This program will install the D-Link DSL-200 ADSL Modem on your computer.

It is strongly recommended that you exit all Windows programs before running this Setup program.


Click Cancel to quit Setup and then close any programs you have running. Click Next to continue with the Setup program.

WARNING: This program is protected by copyright law and international treaties.

Unauthorized reproduction or distribution of this program, or any portion of it, may result in severe civil and criminal penalties, and will be prosecuted to the maximum extent possible under law.

InstallShield _____

Select ISP ✖



Select your ISP from the list below.

If your ISP is not listed, select Other Service Provider. After making a selection, click Next to continue. To make changes to the communication settings, click Customize.

Other Service Provider

America Online (Example)

PPPoA for Australia

PPPoA for NZ

Select Driver Type



Select the type of driver that will be installed. This choice depends on the service provider you are using.

ATM Driver
LAN Driver
WAN Driver

< Back

Next >

Cancel

Communication Settings



Enter your communication settings below. These settings are supplied by your service provider.

VPI:

VCI:

Encapsulation:

Modulation:

< Back

Next >

Cancel

Communication Settings



Enter your communication settings below. These settings are supplied by your service provider.

VPI:

VCI:

Encapsulation:

▼
RFC 2364 PPPoATM LLC Encapsulation
RFC 2364 PPPoATM NULL Encapsulation
RFC 2516 PPPoE Encapsulation
 ▼

< Back

Next >

Cancel

Communication Settings



Enter your communication settings below. These settings are supplied by your service provider.

VPI:

VCI:

Encapsulation:

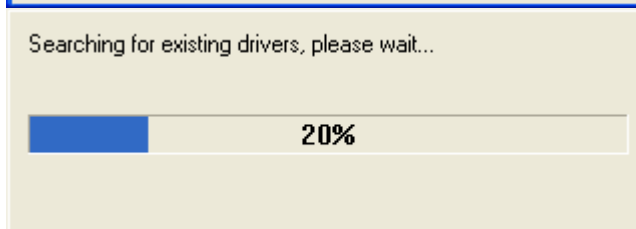
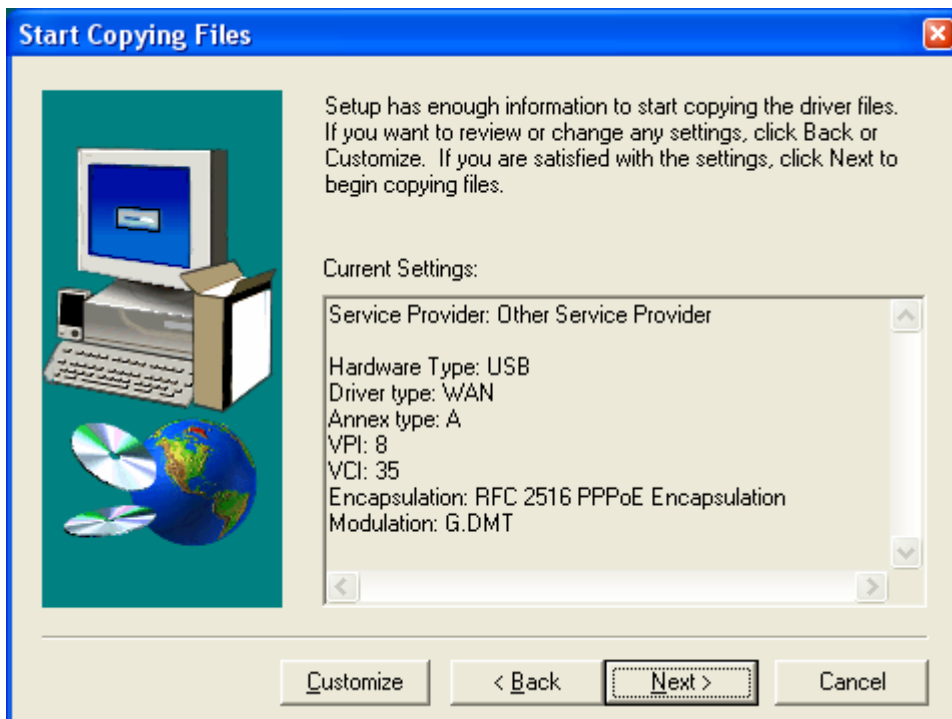
▼

Modulation: ▼

< Back

Next >

Cancel



Setup Complete



The DSL Installer has finished copying files to your computer. In a few moments, the DSL Installer will attempt to detect your hardware and complete the installation process.

InstallShield

< Back

Finish

DSL Installer



The DSL Installer is searching for installed hardware. This may take several moments.

If your modem is not yet plugged in to your computer, please plug it in now.