



DSL-200



Broadband
ADSL USB Modem

This Installer will guide you through the installation process. You are only moments away from using your new D-Link Networking Product.

Thank You for Purchasing Your D-Link Product

- ▶ View Quick Installation Guide
- ▶ View Manual
- ▶ **Install Driver**
- ▶ Install Adobe Reader
- ▶ Visit Your Local D-Link Support

EXIT ▶



DSL-200



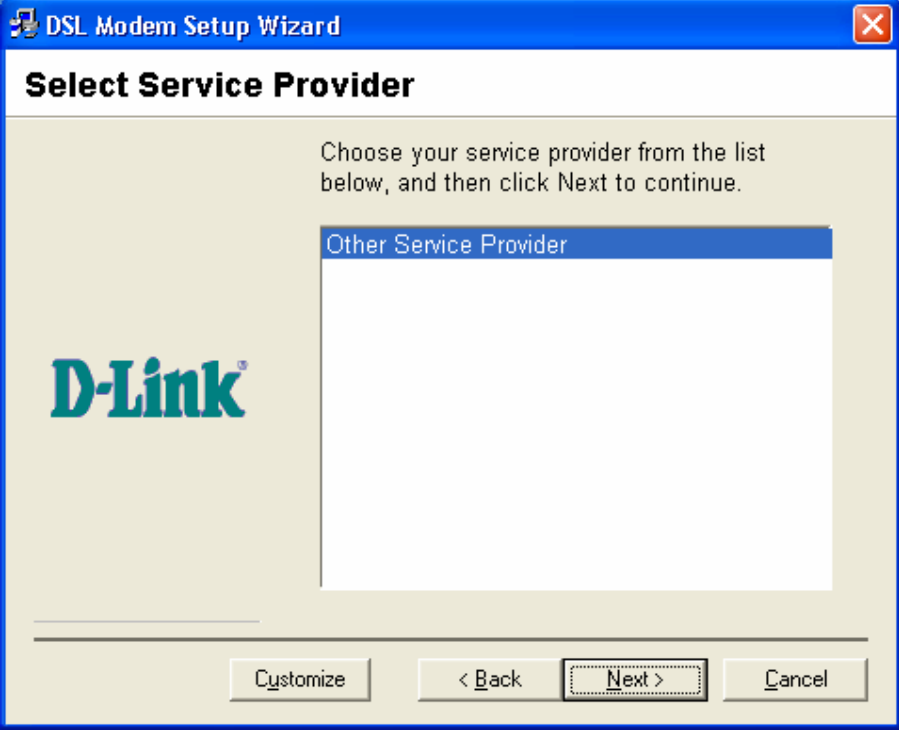
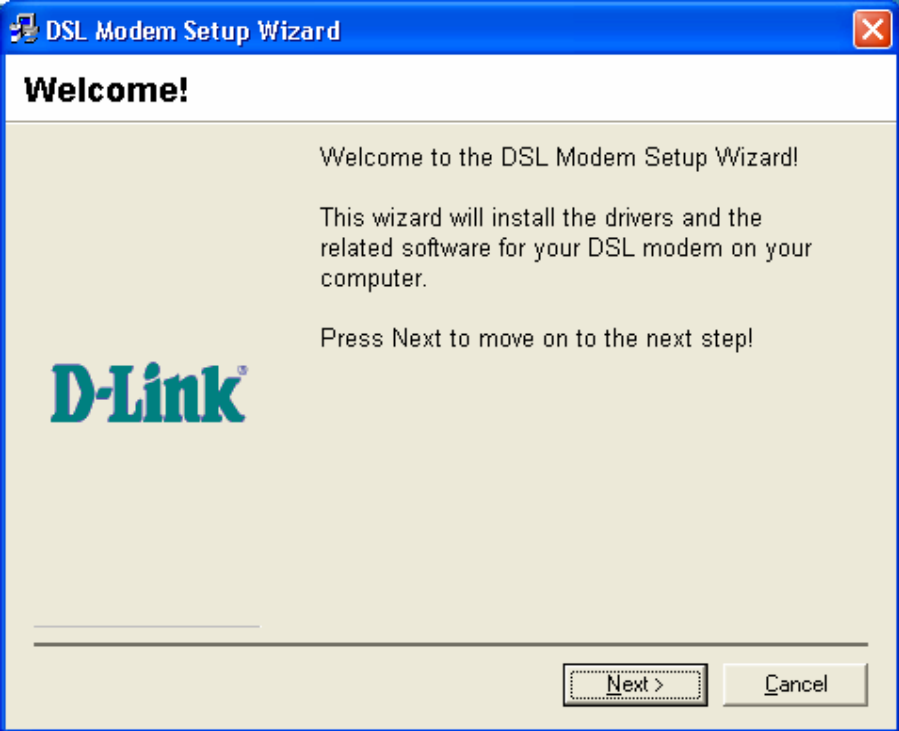
Broadband
ADSL USB Modem

Choose the appropriate driver from the driver list and click it.

- ▶ **Windows 98SE / ME / 2000 / XP**
- ▶ Windows XP 64 bit.

◀ BACK

EXIT ▶



DSL Modem Setup Wizard

Select Driver Type

Select the type of driver that will be installed. This choice depends on the service provider you are using.

D-Link

LAN Driver
WAN Driver

< Back Next > Cancel

DSL Modem Setup Wizard

Communication Settings

Enter your communication settings below. These settings are supplied by your service provider.

D-Link

VPI: VCI:

Encapsulation:

Modulation:

< Back Next > Cancel


DSL Modem Setup Wizard

Communication Settings

Enter your communication settings below. These settings are supplied by your service provider.

VPI: VCI:

Encapsulation:



- RFC 2364 PPPoATM NULL Encapsulation
- RFC 2364 PPPoATM LLC Encapsulation
- RFC 2364 PPPoATM NULL Encapsulation
- RFC 2516 PPPoE Encapsulation

< Back Next > Cancel


DSL Modem Setup Wizard

Communication Settings

Enter your communication settings below. These settings are supplied by your service provider.

VPI: VCI:

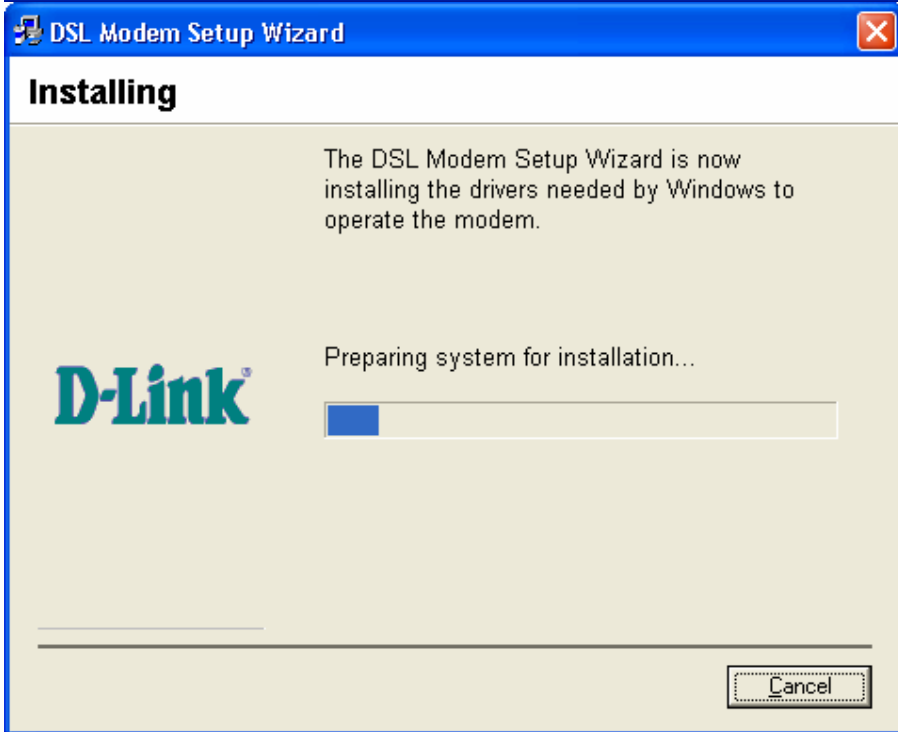
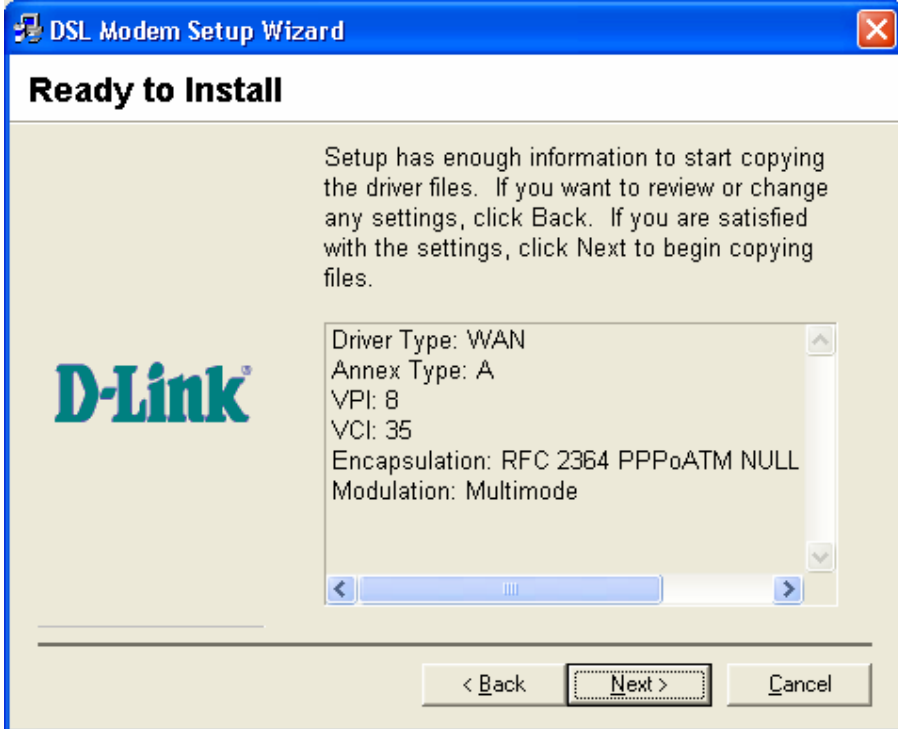
Encapsulation:

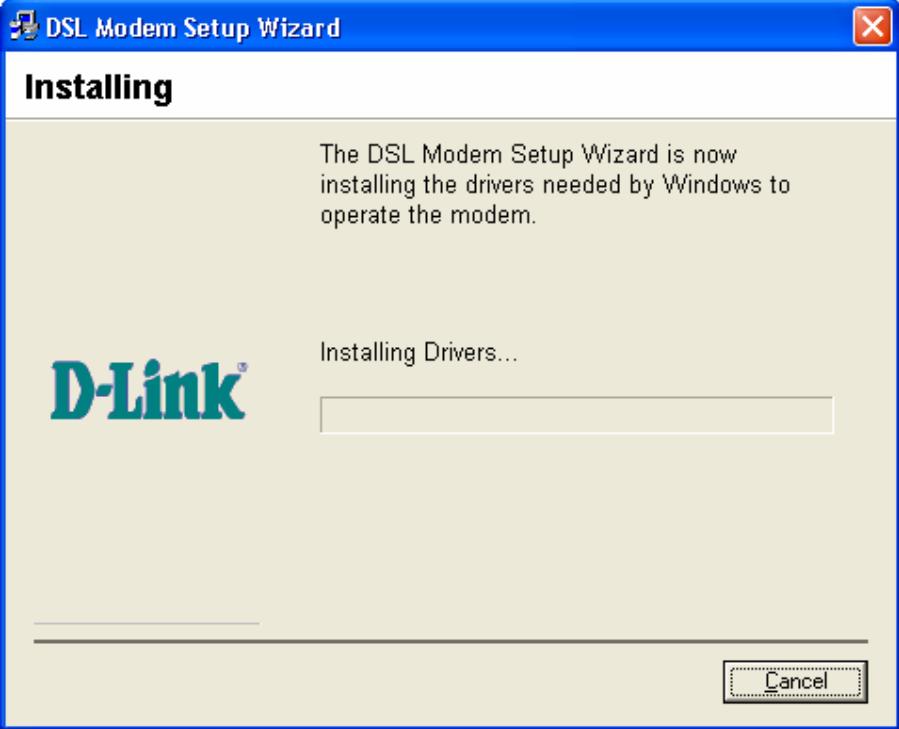
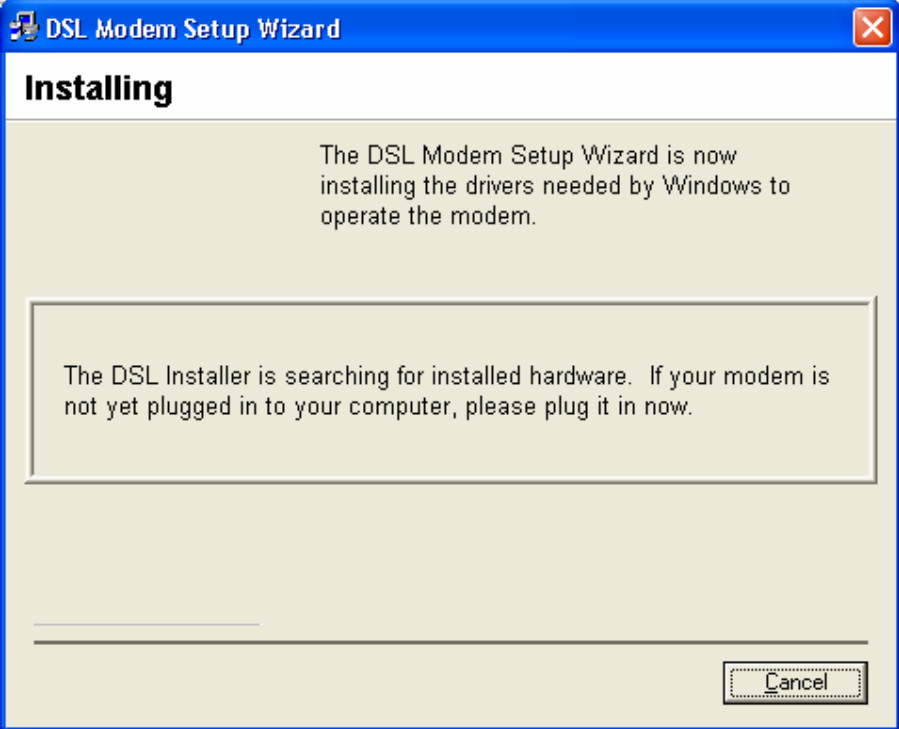


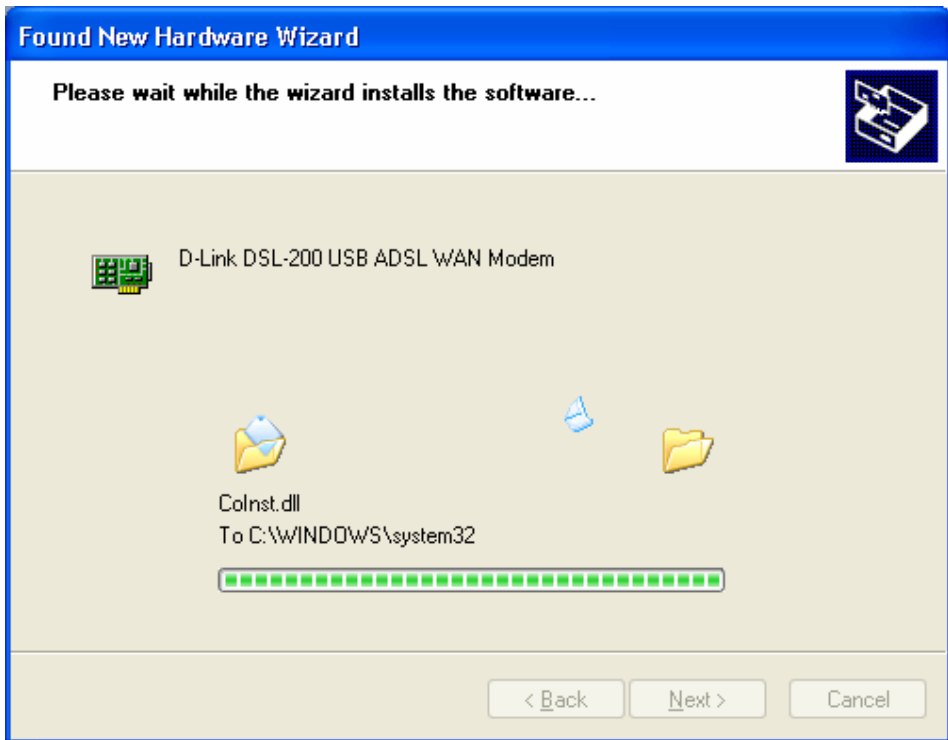
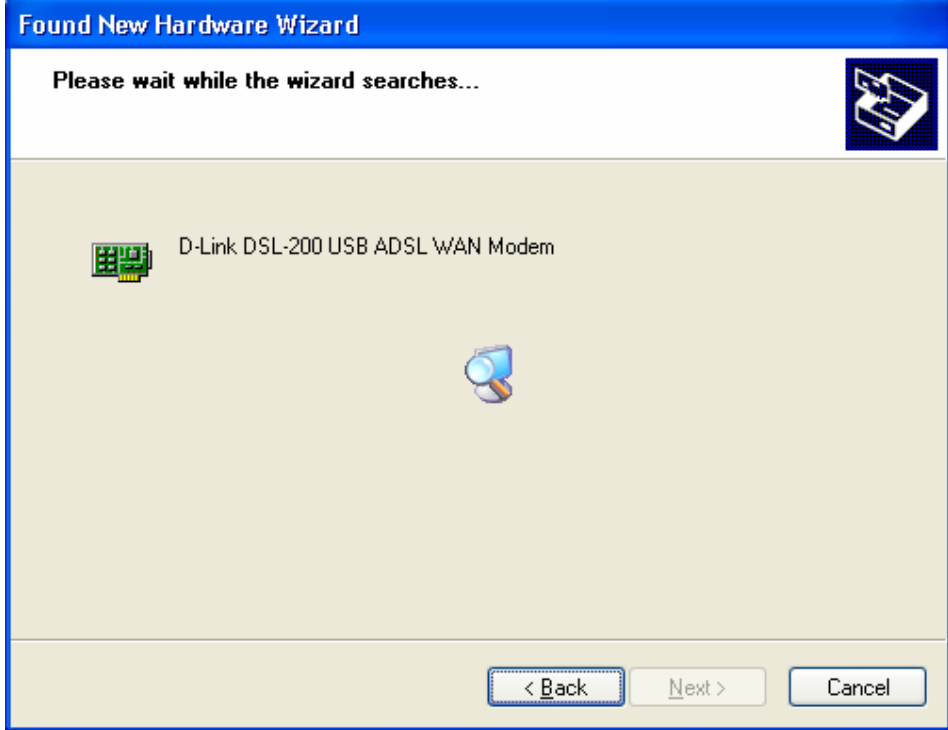
Modulation:

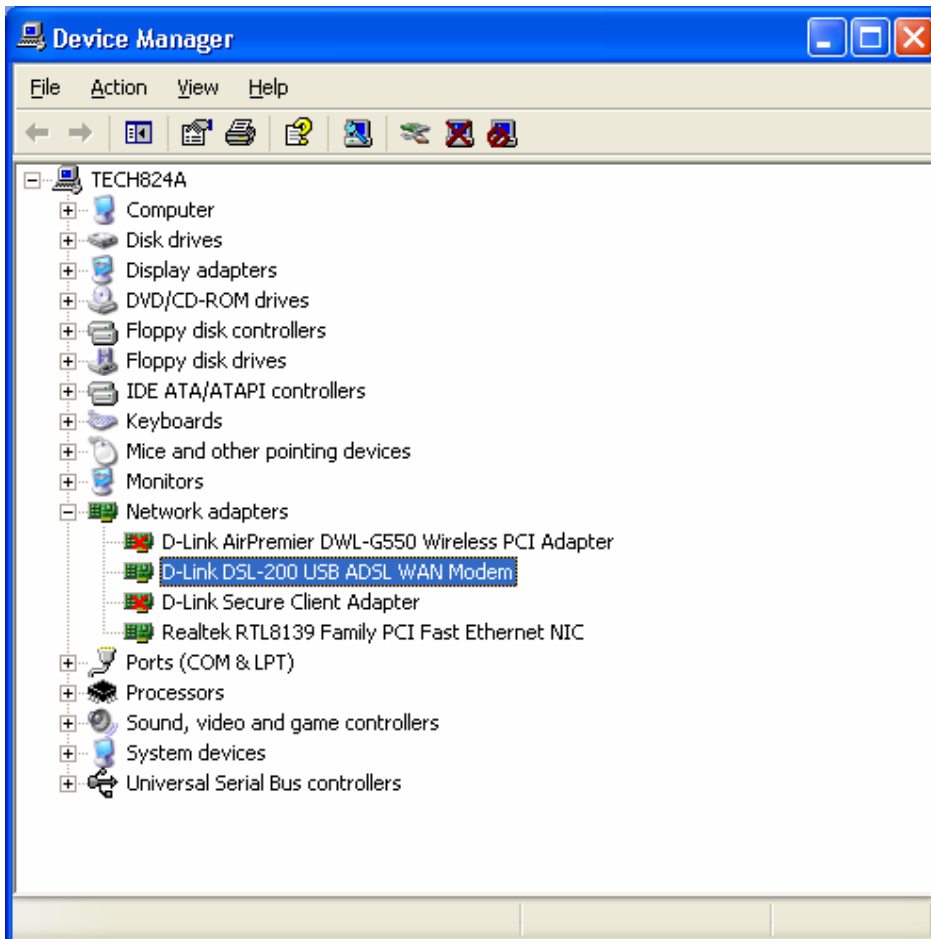
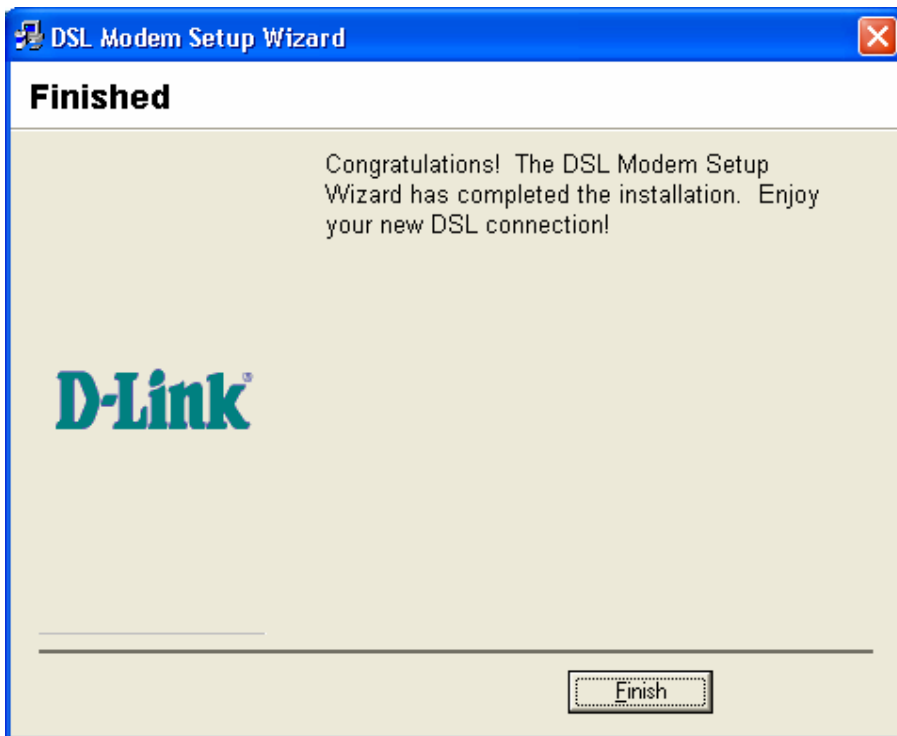
- Multimode
- T1.413
- G.Lite
- G.DMT
- Multimode

< Back Next > Cancel



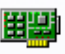






D-Link DSL-200 USB ADSL WAN Modem Properties [?] [X]

General | **Driver** | Details | Power Management

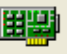
 D-Link DSL-200 USB ADSL WAN Modem

Driver Provider: D-Link
Driver Date: 22/09/2005
Driver Version: 1.7.3.0
Digital Signer: Not digitally signed

Driver Details... To view details about the driver files.
Update Driver... To update the driver for this device.
Roll Back Driver If the device fails after updating the driver, roll back to the previously installed driver.
Uninstall To uninstall the driver (Advanced).

OK Cancel

Driver File Details [?] [X]

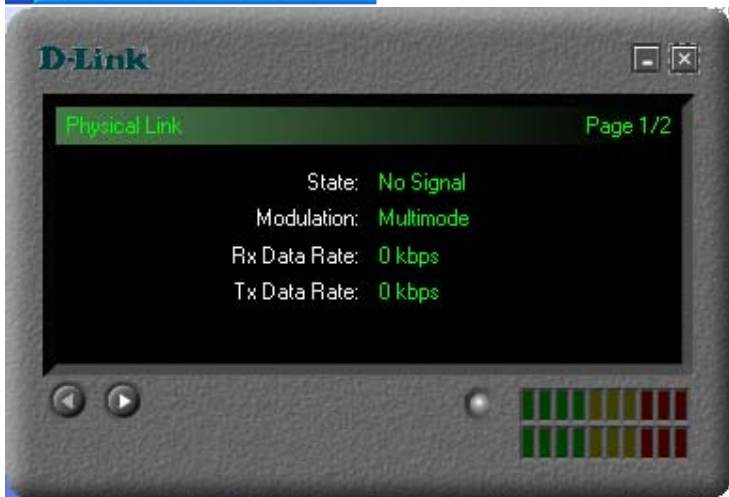
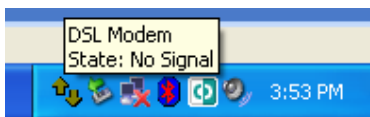
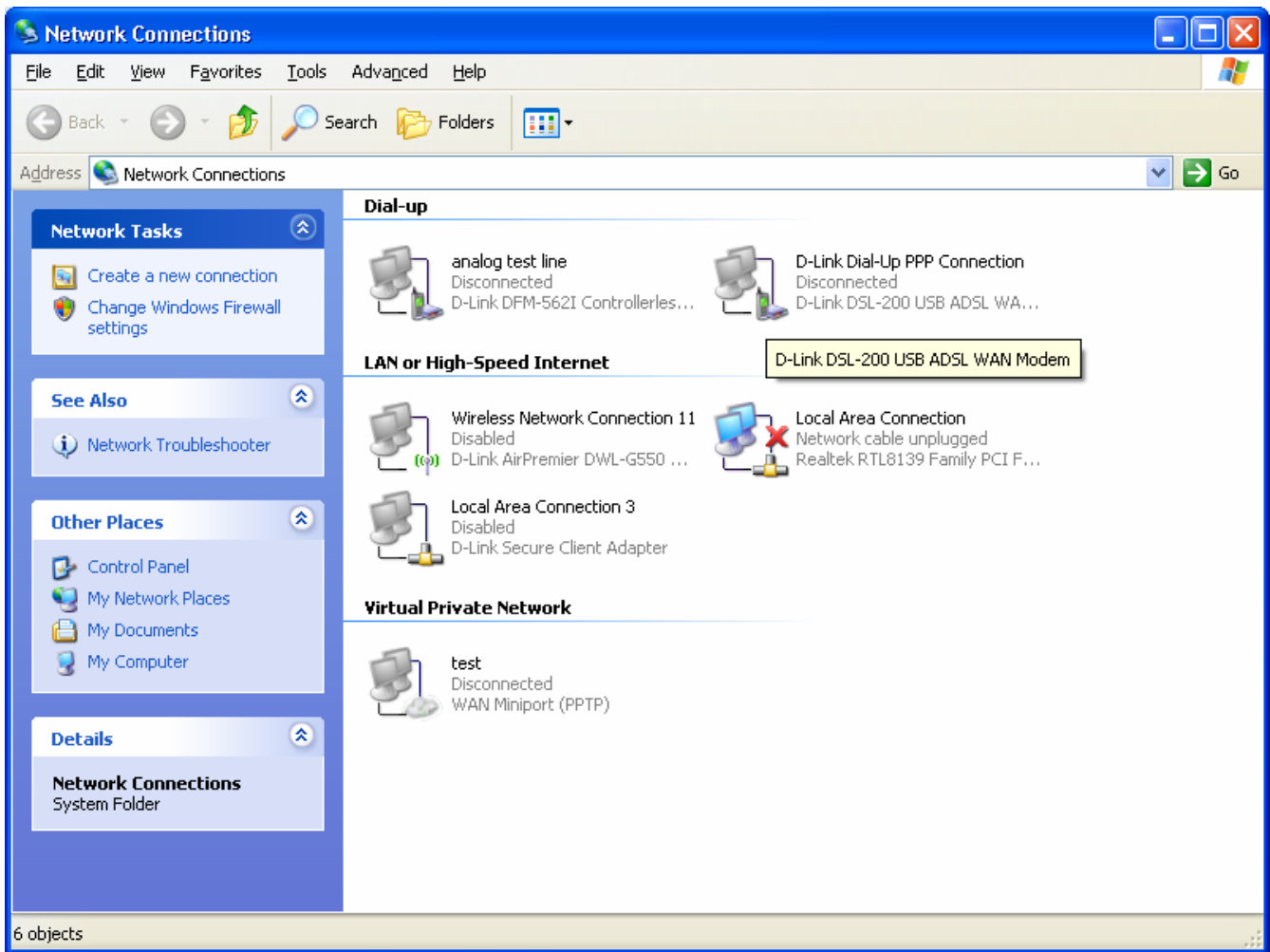
 D-Link DSL-200 USB ADSL WAN Modem

Driver files:

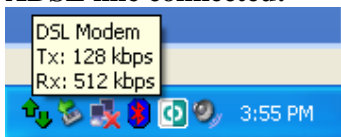
- C:\WINDOWS\system32\Colnst.dll
- C:\WINDOWS\system32\DRIVERS\gwauusb.sys**
- C:\WINDOWS\system32\DRIVERS\mon_ac_w.bin

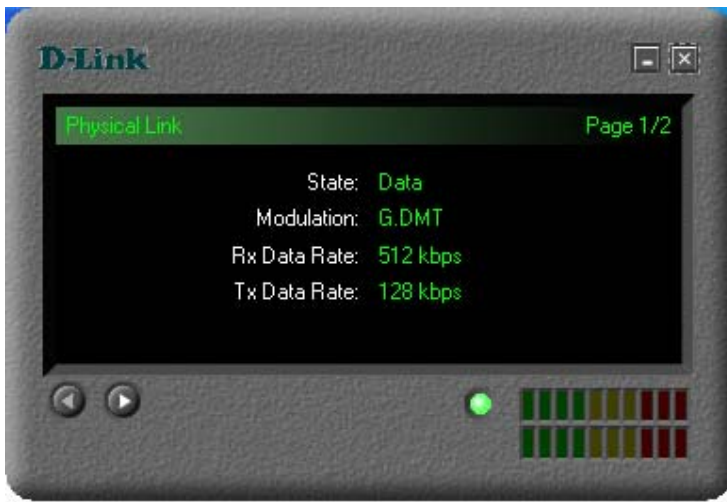
Provider: Conexant Systems Inc.
File version: 1.07.0003Q-A
Copyright: Copyright © Conexant Systems Inc. 2000-2005
Digital Signer: Not digitally signed

OK

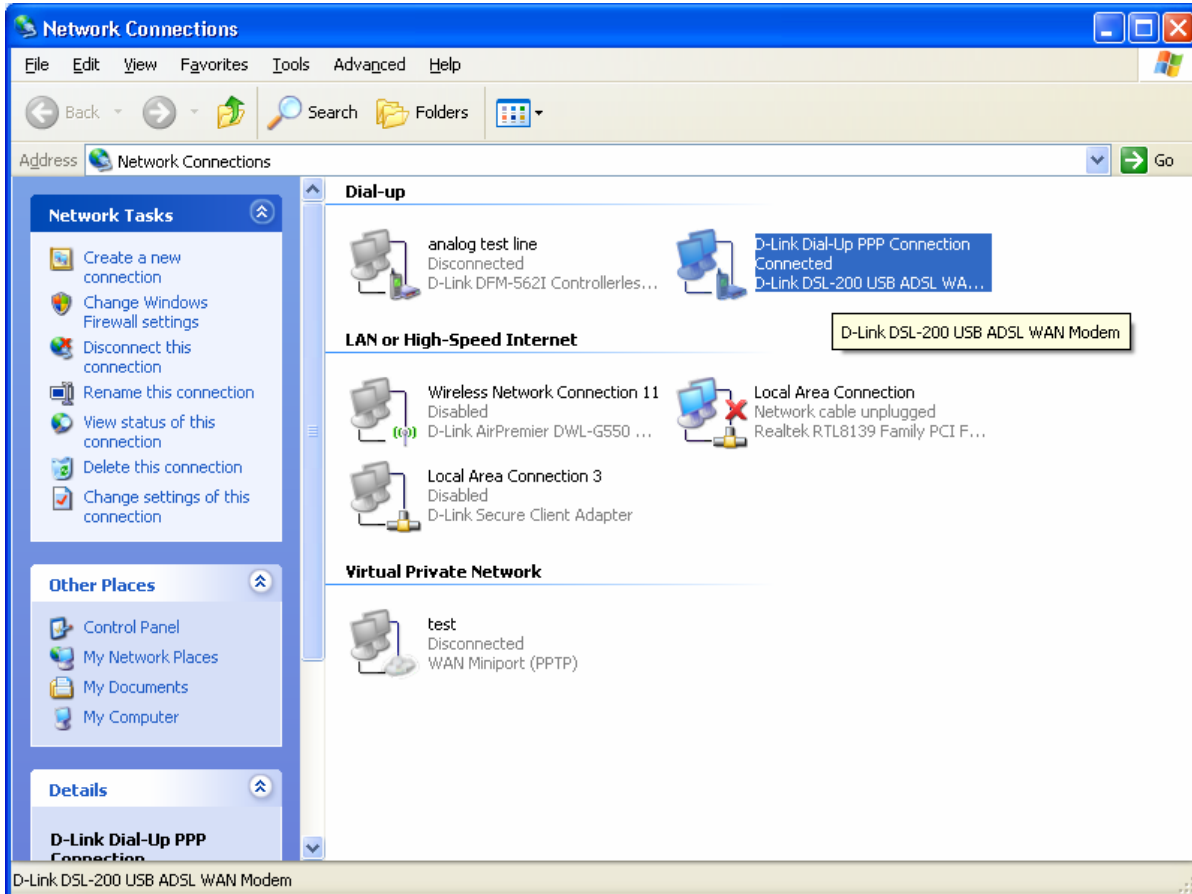


ADSL line connected:





PPTP Authenticated:



D-Link Dial-Up PPP Connection Status [?] [X]

General Details

Connection

Status: Connected
Duration: 00:00:52
Speed: 512.0 Kbps

Activity

	Sent	Received
Bytes:	2,804	2,098
Compression:	0 %	0 %
Errors:	0	0

Properties Disconnect

Close

D-Link Dial-Up PPP Connection Status [?] [X]

General Details

Property	Value
Device Name	D-Link DSL-200 USB ADSL WA...
Device Type	isdn
Server type	PPP
Transports	TCP/IP
Authentication	MD5 CHAP
Compression	(none)
PPP multilink framing	Off
Server IP address	203.17.101.82
Client IP address	220.253.72.229

Close

DSL Link

Startup State	Data Mode
Startup Progress	Completed (0xad)
Last Failed	0x00000000
Bit Swap Counter	0x00000001
DSP Firmware Ver	Y.1.28.209
Local Coding Gain	4.5
Remote Vendor ID	0f-00-42-43-4c-41-00-00
Remote Vendor Rev	ad-00-00-00
Annex Type	Annex A
Data Rate (Rx/Tx)	512 128
Line Rate (Rx/Tx)	544 160
Attenuation (dB)	33 18
SNR Margin (dB)	24.5 24

Actual Configuration

Rate (kbps)	Downstream	Upstream
512	128	
Latency	Fast	Fast
R_F	0	0
R_I	0	0
D	1	1
S	1	1
Framing DH	Reduced Overhead (3)	
Trellis	Trellis Enabled	
Standard	G.DMT	
Profile	MAIN	

Driver Config

VPI	0
VCI	0
RFC1483 Mode	Bridged LLC
RFC2364 Mode	NULL
RFC2364 Enable	Enable
RFC2516 Enable	Disable

SNR Margin Per Bin

Connection Test

Connections Lost	0
Startup State	Data Mode
Data Rate Rx	512
Data Rate Tx	128
Failures	
Local	Remote
Overall	0x00000000
POW	0x00000000
LDS	0 0
SEF	0 0
nod_I	0 0
nod_F	0 0
lcd_I	0 0
lcd_F	0 0
Counters	
I	F
RS Local	0 0
RS Remote	0 0
CRS Local	0 0
CRS Remote	0 0
NCD Local	0 0
NCD Remote	0 0
OCD Local	0 0
OCD Remote	0 0
HEC Local	0 0
HEC Remote	0 0
LDS Local	0
LDS Remote	0
SEF Local	0
SEF Remote	0

ATM Counters

	Rx	Tx
Cells Okay	0	0
Cells Dropped	0	0
QAM Cells Okay	0	0
QAM Cells Dropped	0	0
Packets Okay	0	0
No Buffer Errs	0	0
Packet Errs Tx	0	0
AAL5 Errs Rx	0	0
Rx Cells OutOfSynch	0	0

XCVR Config

Action	Startup
Mode	CPE
Initiate	Default
Data Interface	UTOPIA Level 1
Trellis	Enable
EC FDM	FDM Mode
Standard	Multimode
Profile	MAIN
Max bits per bin	14
Tx Start Bin	6
Tx End Bin	31
Line Driver Stdby	Disable
Rx Start Bin	32
Rx End Bin	255
Rx Bin Adjust	Disable
Tx Power Attenuation	2 dB
NTR	Disable
ATU-R pilot for data	Enable
Coding Gain	Auto

DSL Failures/Counters

Failures		
Overall	Local	Remote
0x00000000		
POW	0x00000000	
LDS	0	0
SEF	0	0
nod_I	0	0
nod_F	0	0
lcd_I	0	0
lcd_F	0	0
Counters		
I	F	
RS Local	0	0
RS Remote	0	0
CRS Local	0	3
CRS Remote	0	0
NCD Local	0	0
NCD Remote	0	0
OCD Local	0	0
OCD Remote	0	0
HEC Local	0	0
HEC Remote	0	0
LDS Local	0	0
LDS Remote	0	0
SEF Local	0	0
SEF Remote	0	0

EOC Registers

Serial Num	00-17-9a-5d-e6-2e
Self Test	00-00-00-00-00-00
VendorDisc1	00-00-00-00-00-00
VendorDisc2	00-00-00-00-00-00
Line Atten	0x00000010
SNR Margin	0x00000031
ATU-R Config	10-00-00-00-00-00
Reg A	00-00-00-00

System Info

Package Version	CGU 1.07Q A Package 004
Driver Version	1.07.00030-A
Driver Type	W/an
DSP Firmware Ver	Y.1.28.209
CPL Version	4.2.2
USB Controller Ver	1.01.0008 (CG.?)
Boot Code Version	1.00.0000 (CG.A)
Annex Type	Annex A
USB Rx Pipe	Bulk
USB State	0x00000000
Vendor ID	0x00000915
Product ID	0x00008104
Device ID	0x00000100
MAC Addr	00-17-9a-5d-e6-2e
DSP File Name	mon_sc_w.bin

DSP FW File

Auto Restart	Disable
FW File	Toggle

Program EEPROM

Zero Byte	0x00000000
Vendor ID	0x00000915
Product ID	0x00008104
Device ID	0x00000100
MAC Addr	00-17-9a-5d-e6-2e

OAM Loopback Test

Type	F4 Segment
VPI	0
VCI	3
PTI	0
OAM Sent	0
OAM Received	0
Errored OAM	0

Upstream Bin Loading

DownStr Bin Loading