

WIRELESS

N

Web Filtering

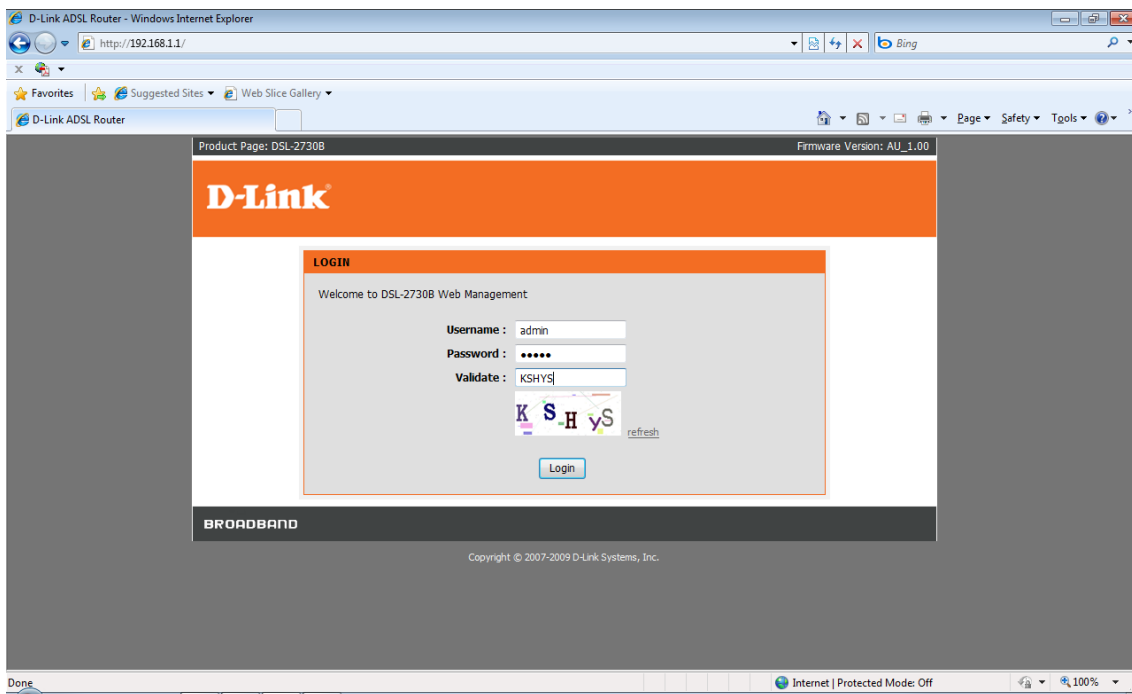


This document will detail how to configure Web Filtering on the DSL-2730B.

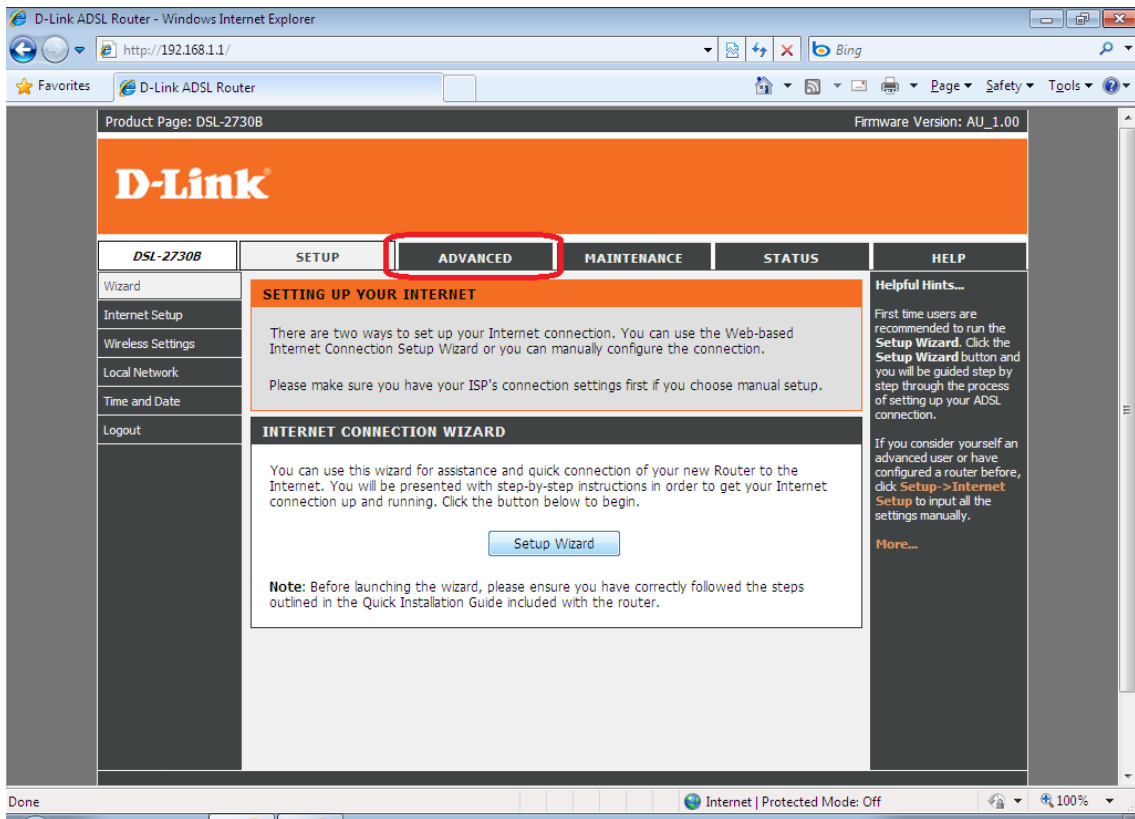
NOTE:

The Web Filter feature cannot be configured to block websites to specific computers. All computers on the network will be affected by the filter.

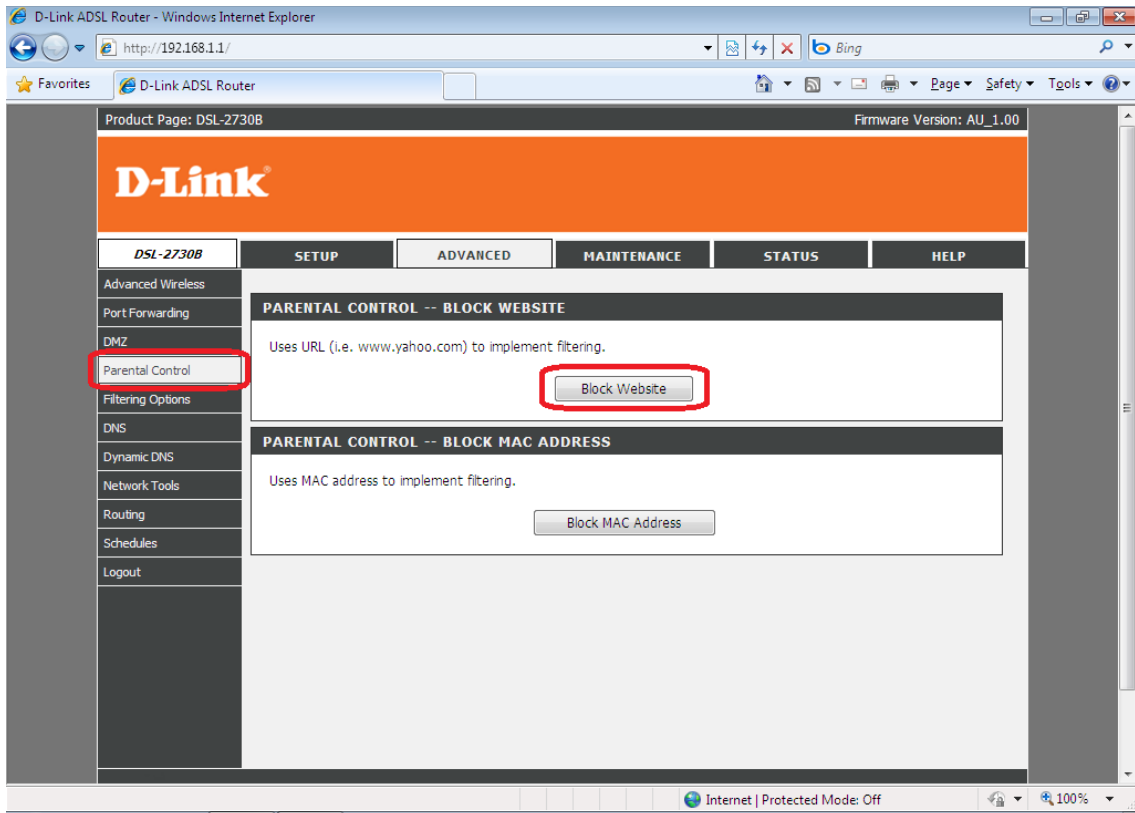
1. Log in to the modem with the computer connected to the modem via Ethernet.
 - URL: <http://192.168.1.1> (default)
 - Username: admin
 - Password: admin (default)
 - Graphic Authentication: (randomly generated)



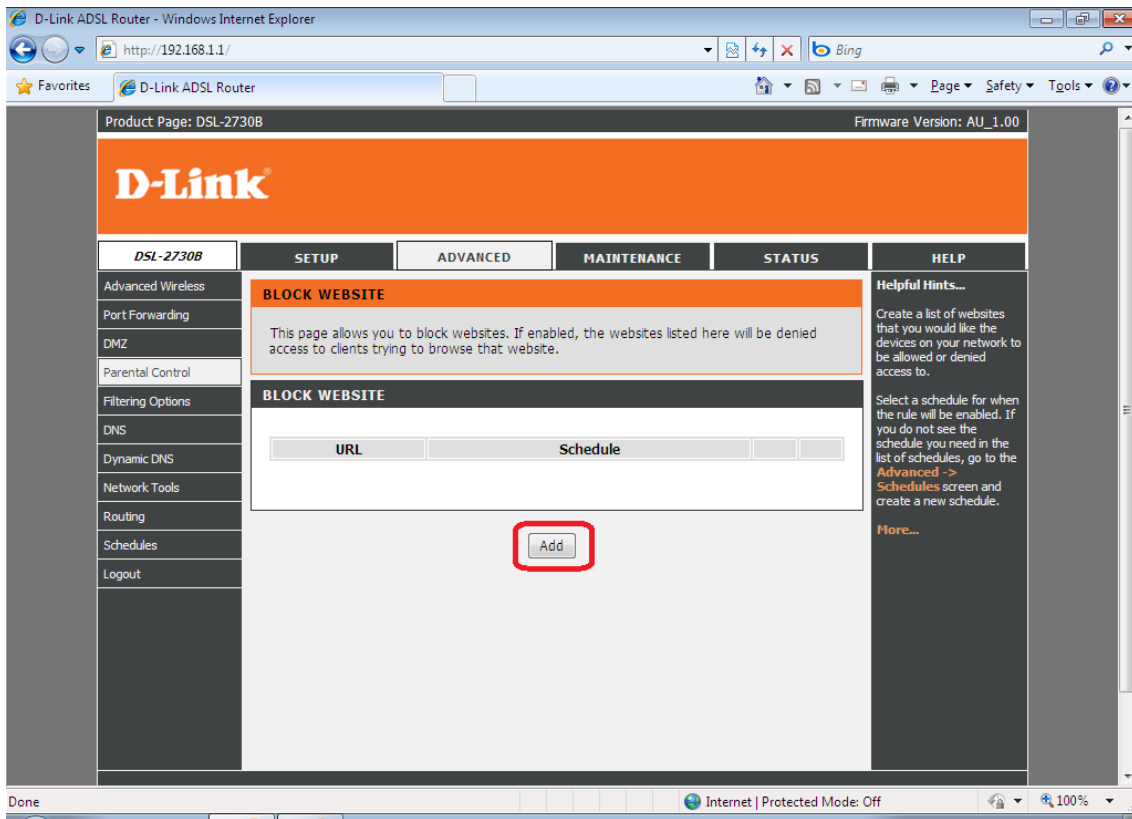
2. Select the **ADVANCED** button in the top menu.



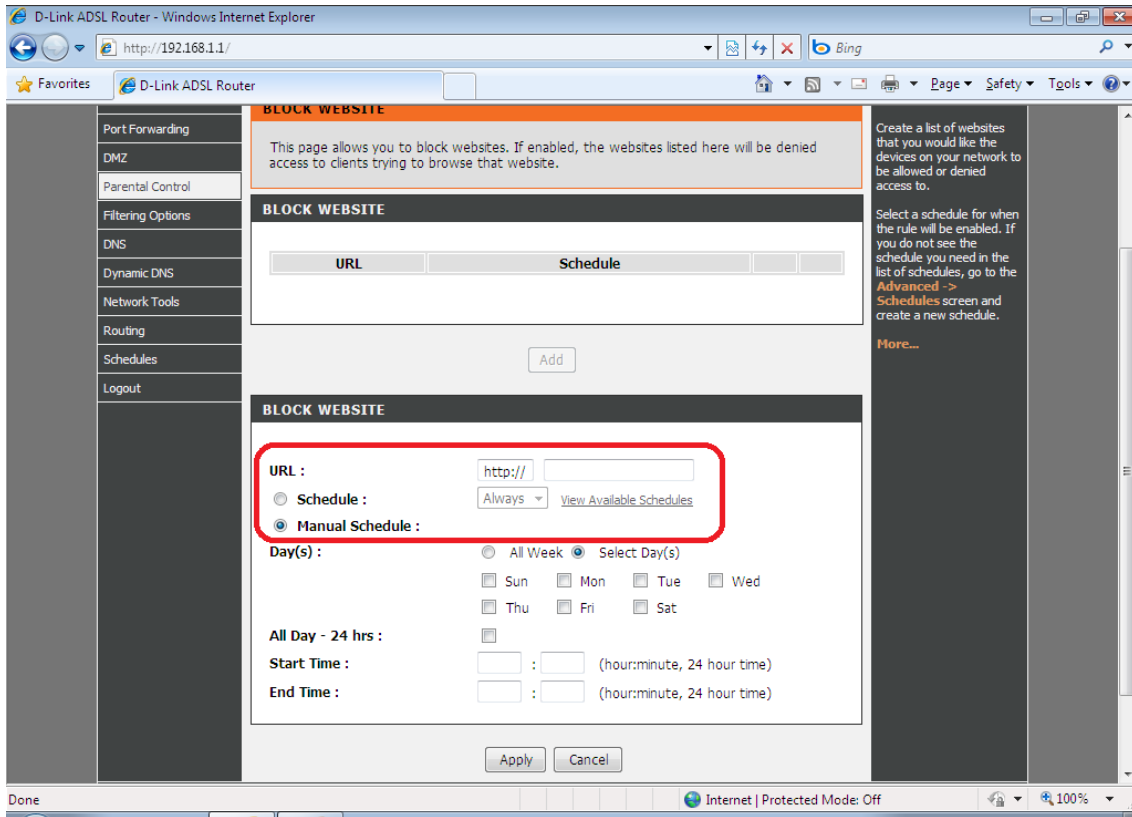
3. Select **PARENTAL CONTROL** in the left menu, followed by the **Block Website** button.



4. Click **ADD** to create a new filter rule.



5. Enter the URL of the website you wish to block access too e.g. <http://www.youtube.com>
 - Select **Schedule** if you wish to set the filter to 'always' block the site or select a pre-configured schedule.
 - Select **Manual Schedule** to create a new schedule in which the site will be blocked.



6. Once all information is set, click on **APPLY** to save the changes and verify whether the sites are being blocked.