

How to update firmware in your modem router

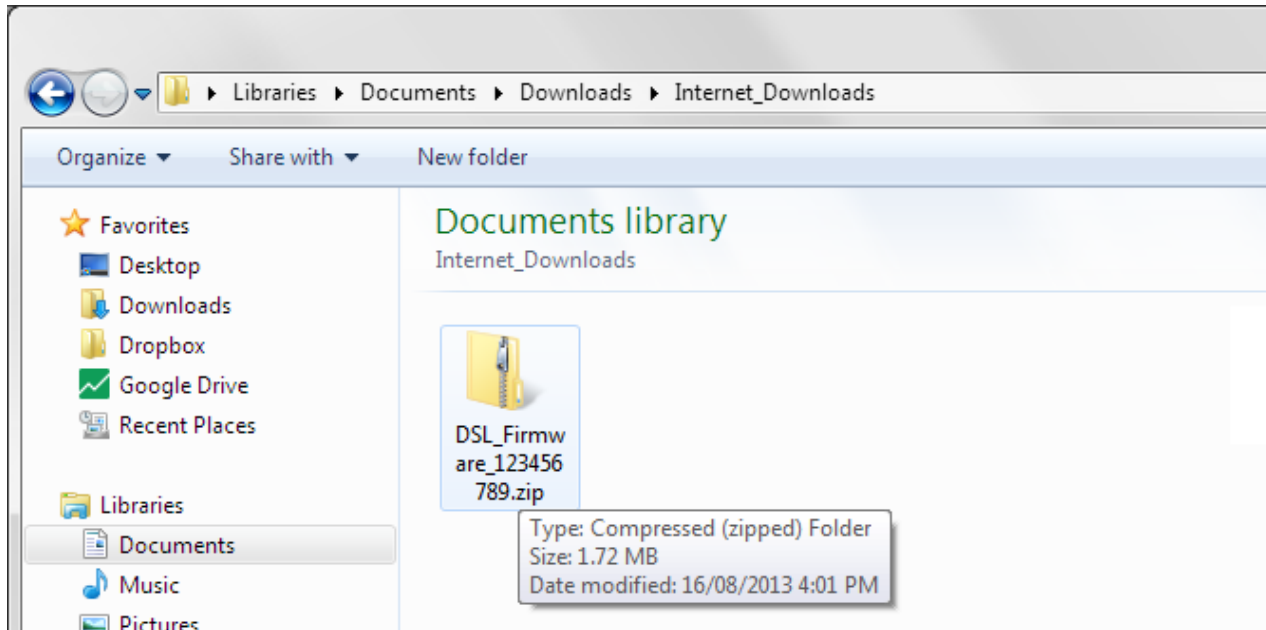


This document details how to load firmware in your modem/router

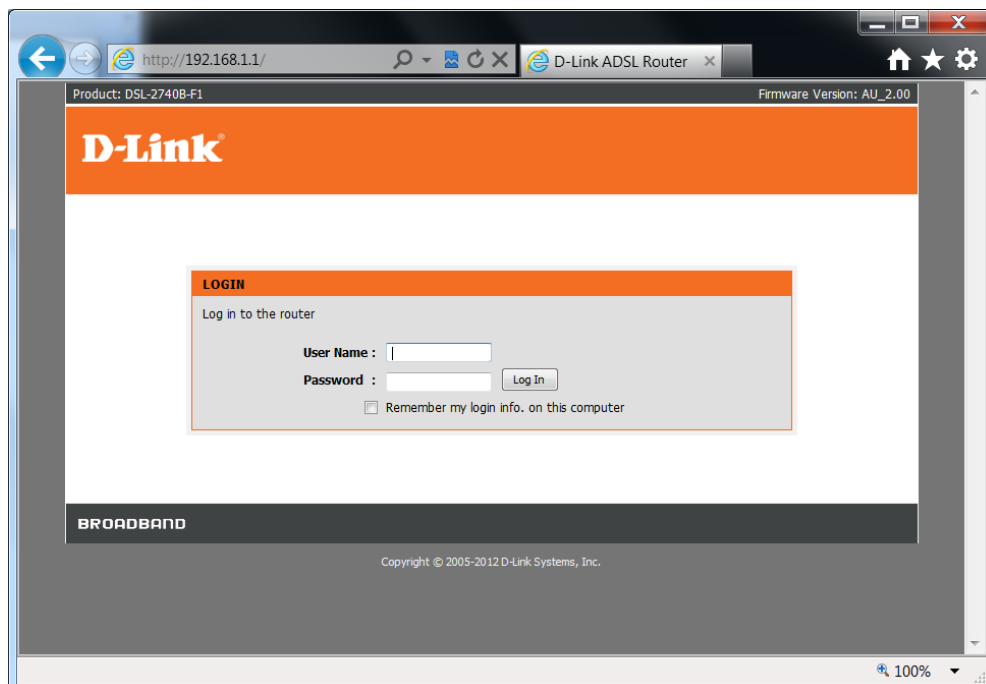
Please note: Firmware update should always be done from a computer connected directly to the router via an Ethernet cable. It should not be performed via a wireless connection.

Step 1. Download the latest firmware file for your modem router. Visit support.dlink.com.au web site, choose your router model and select Downloads. Download the appropriate firmware file to any folder on your computer, as soon as you can easily locate it.

Step 2. Open the folder where you saved the firmware file. The file may come in two possible formats: if you hover your mouse over the file and it is reported as “Compressed (zipped) Folder” – open the folder and Copy – Paste the file inside it to another location (e.g. your Desktop). If it is coming up as “BIN file” or other – you are ready to proceed to the next step.



Step 3. Open your Internet Browser and in the address field type in <http://192.168.1.1>.



Step 4. When prompted type in the Username and Password then click on the “Log In” button.
If you have not changed the password for the modem administration, the factory settings are:

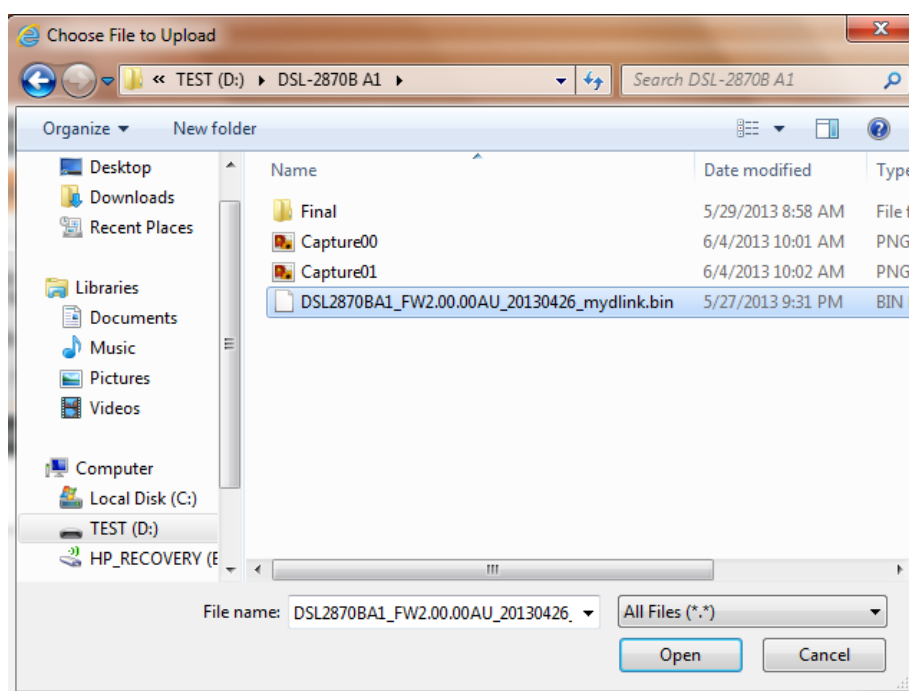
Username: admin

Password: admin

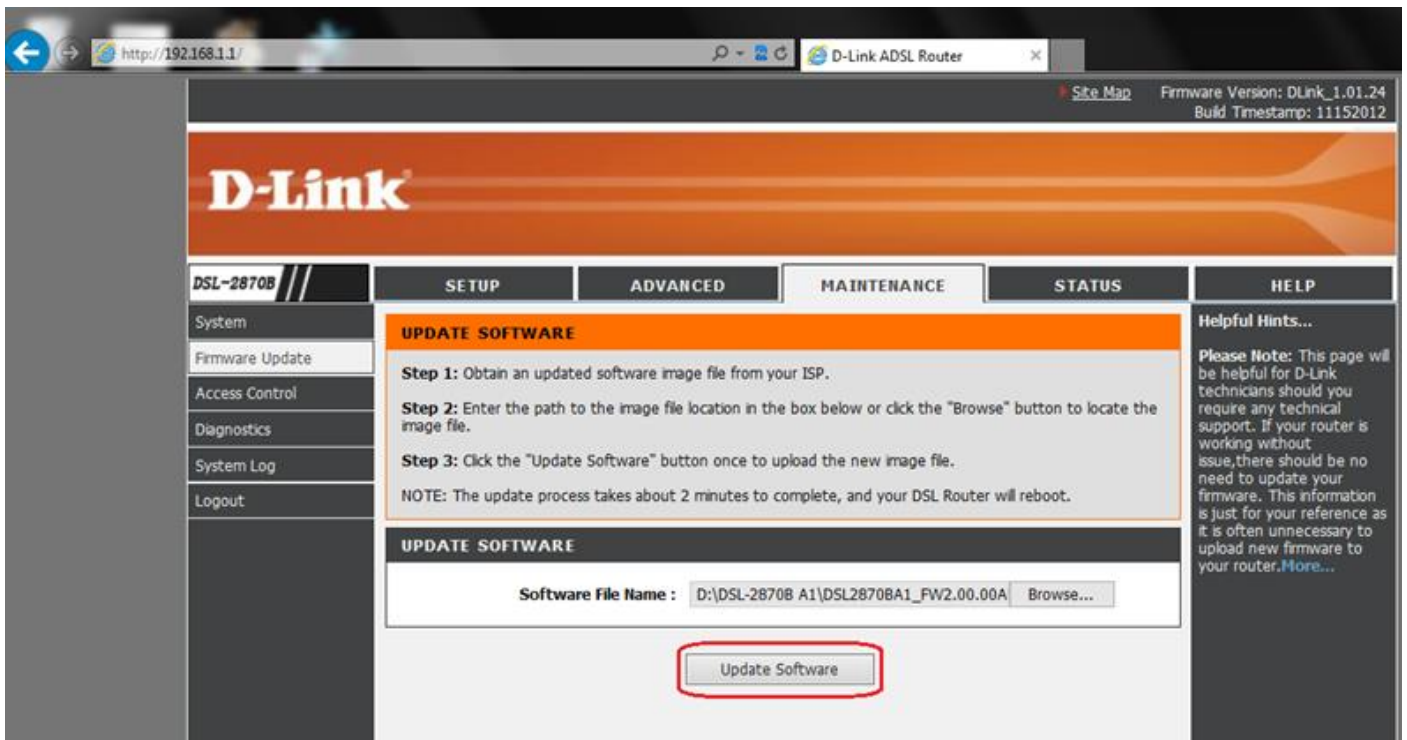
Step 5. After logging in you will be presented with the modem’s configuration pages.
Click on [MAINTENANCE] > [Firmware Update] then Click the [Browse...] button:



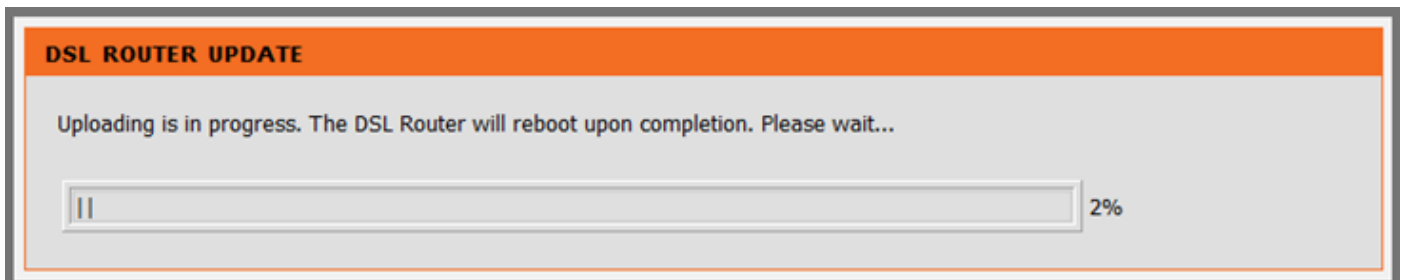
Step 6. Browse to and select the firmware file which you saved on your computer in Steps 1-2.



Step 7. Click on the [Update Software] button to begin.



Your modem router will now begin to upload the firmware file. Please wait for the process to complete.



After finishing the upgrade your modem router will restart automatically and you will be prompted to re-login. You can verify the firmware version in the top right corner of the screen.

Step 8. After firmware update it is recommended to reset modem router to factory defaults and re-configure it. Please make sure you have your Internet provider details (your username and password) ready.

To reset the modem router select [MAINTENANCE] > [System] and click on the “Restore Default Settings” button.



After resetting the router please re-login and re-configure your settings.