

WIRELESS

N

Port Forwarding Guide

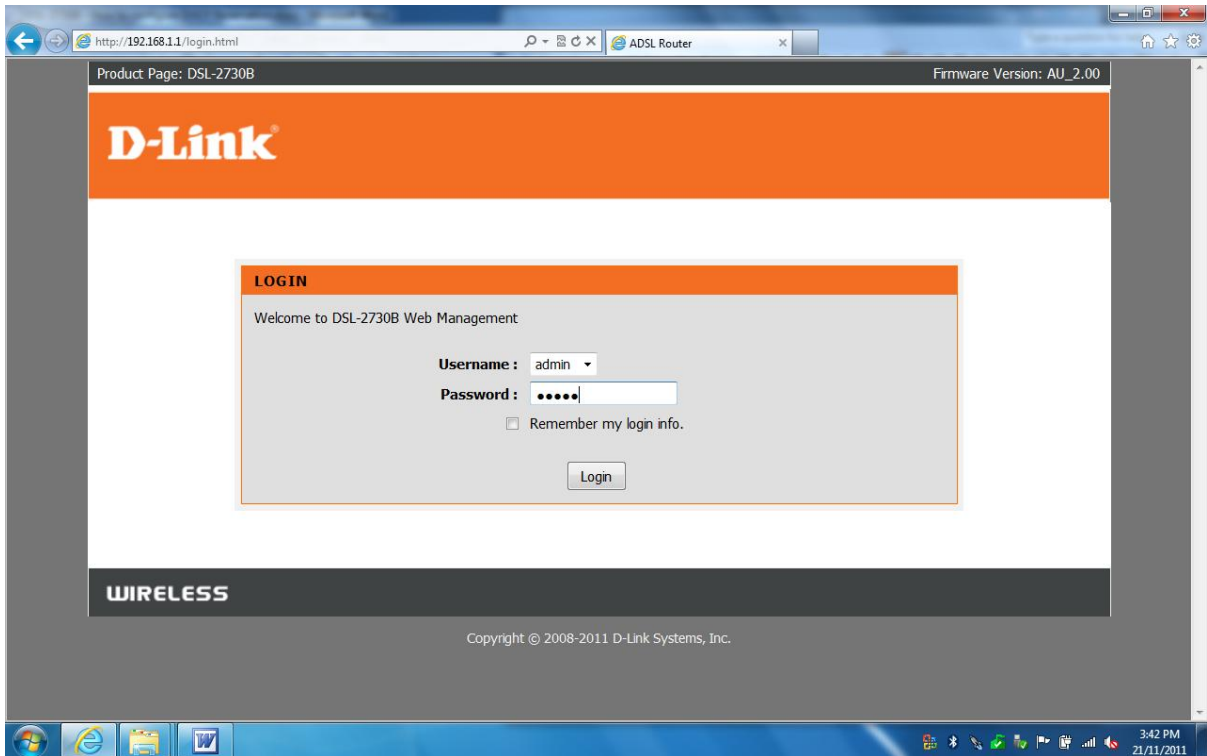


This document will detail how to configure Port Forwarding on the following models
DSL-2730B Revision T1 Firmware AU_2.00
DSL-2740B Revision F1 Firmware AU_2.00
DSL-2750B Revision B1 Firmware AU_2.00

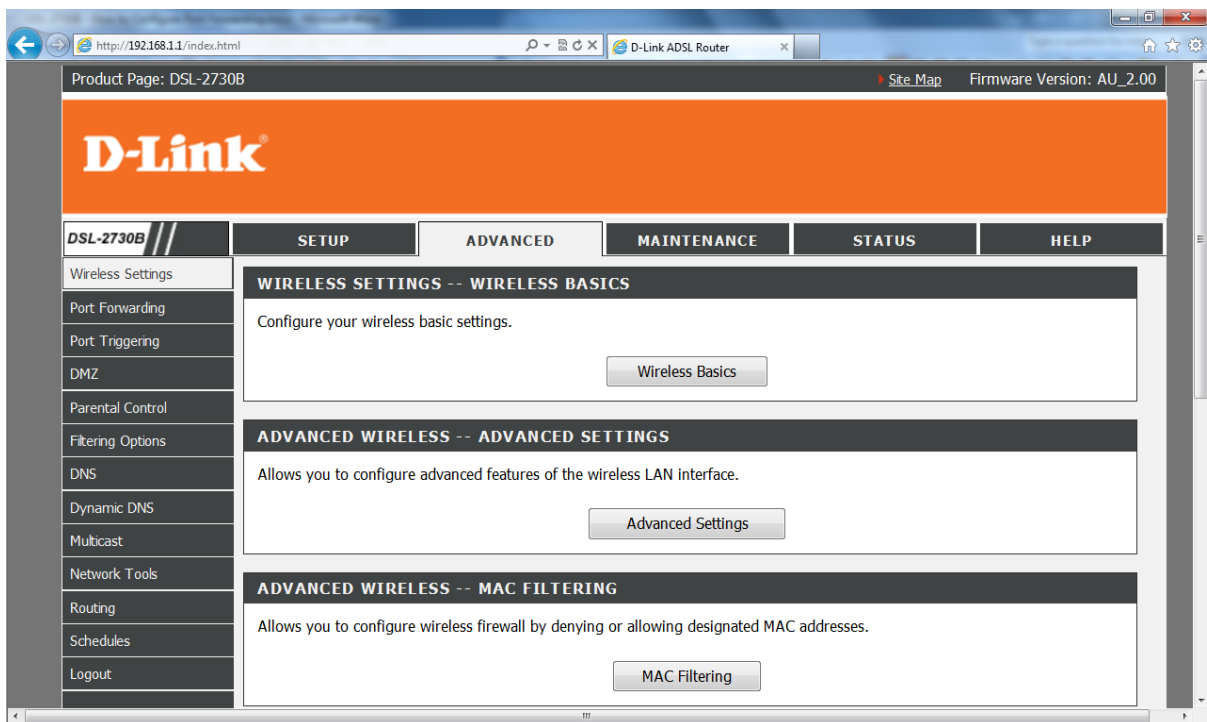
NOTE:

*It is recommended that your PC is configured with a Static IP when using Port Forwarding. See **page 6** - how to configure Windows 7 with a static IP.*

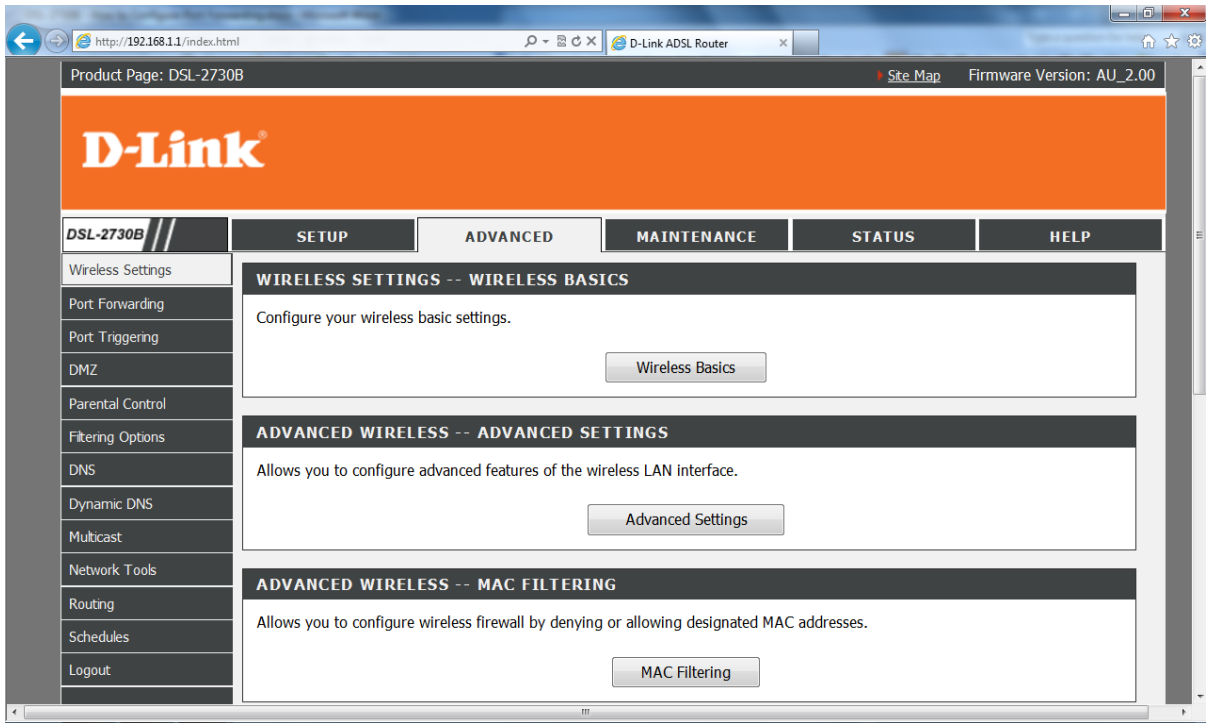
1. Log in to the modem with the computer connected to the modem via Ethernet.
 - URL: <http://192.168.1.1> (default)
 - Username: admin
 - Password: admin (default)



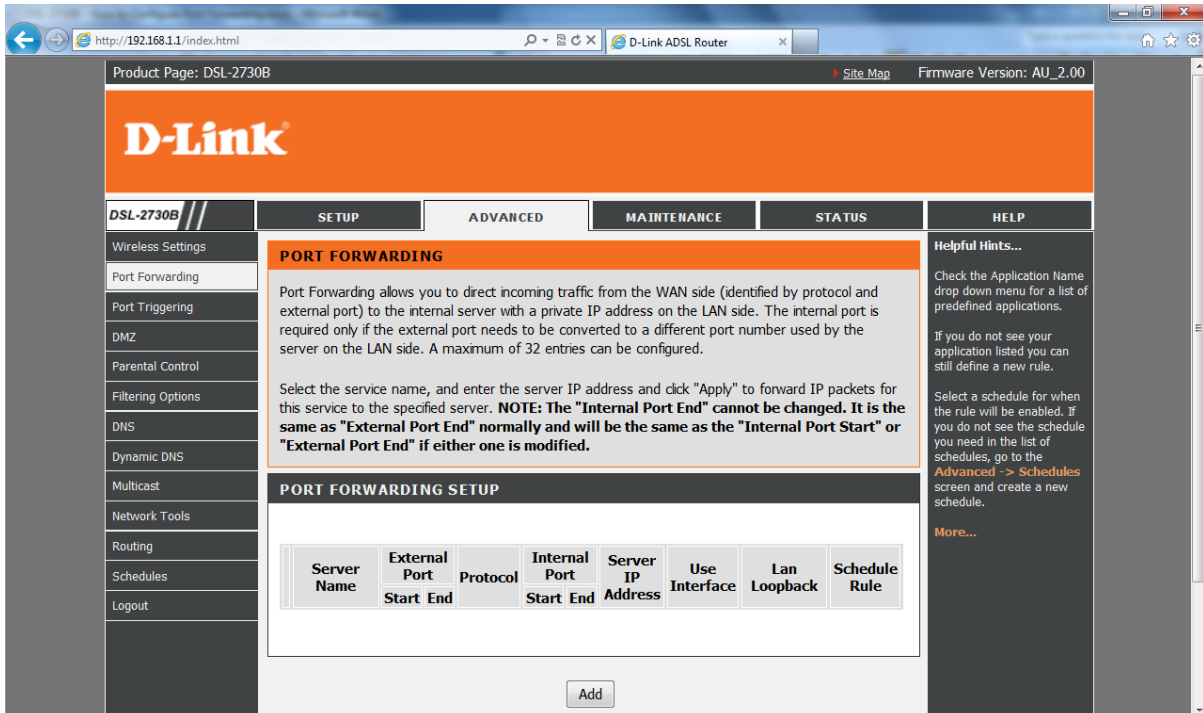
2. Select the **ADVANCED** button in the top menu.



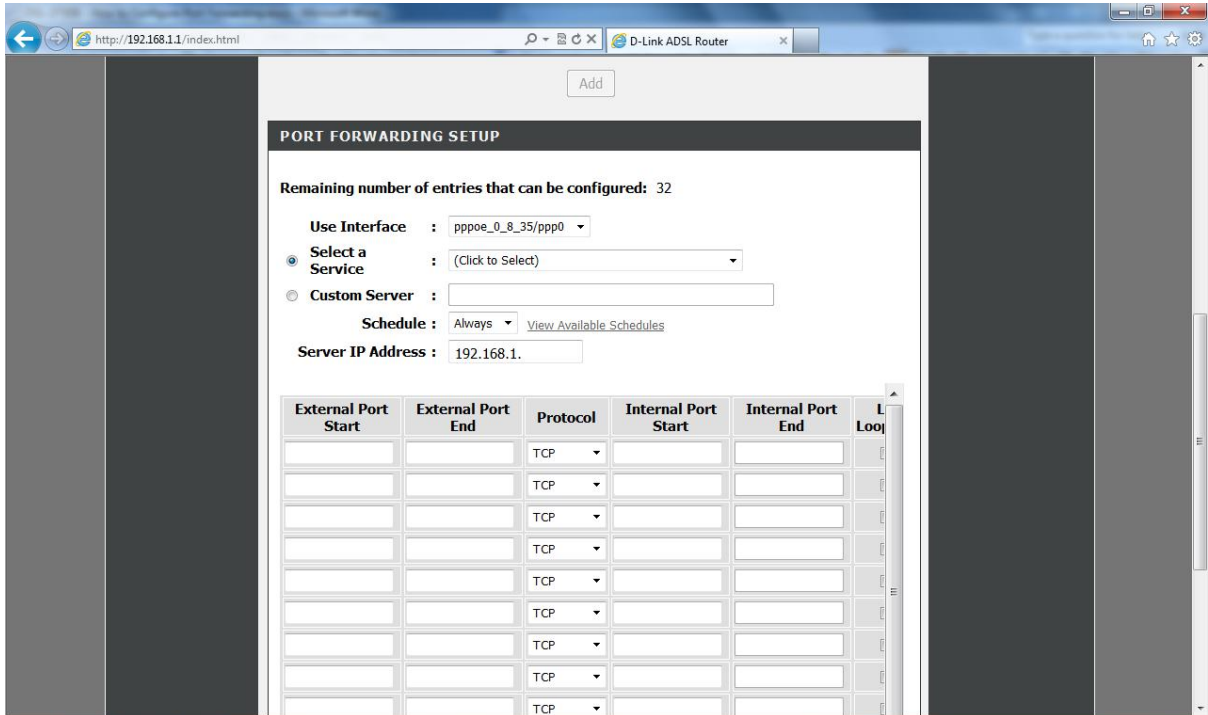
3. Select **PORT FORWARDING** in the left menu.



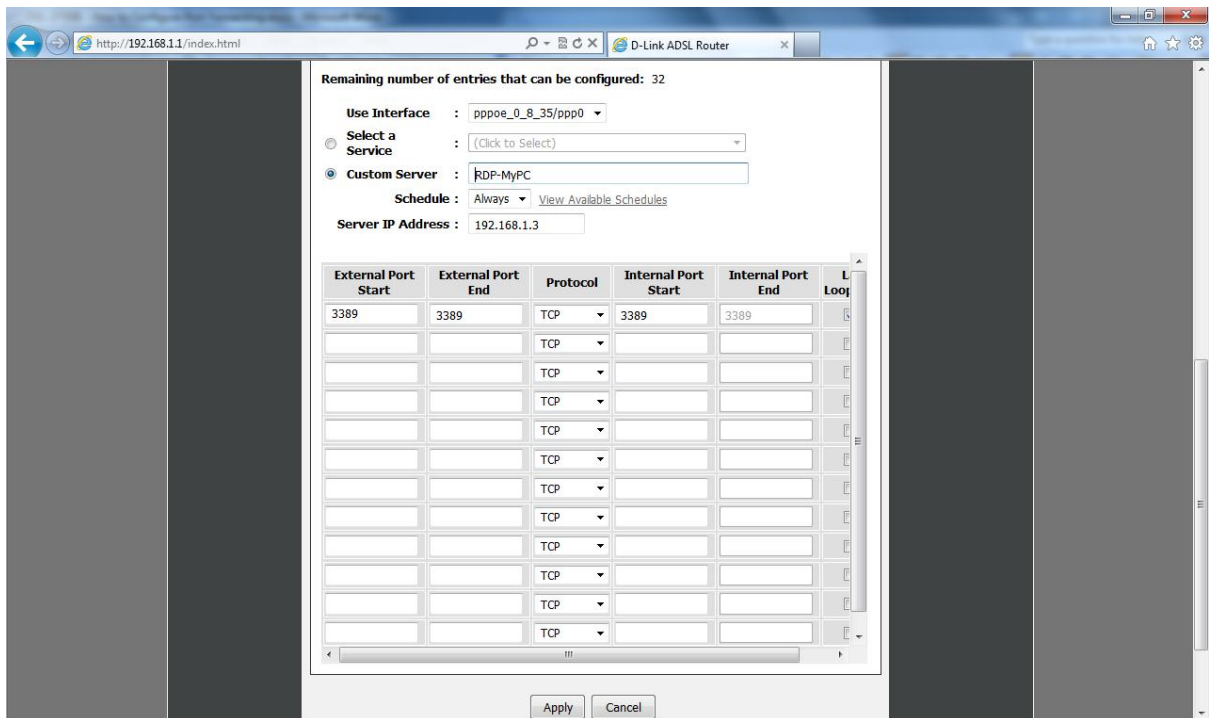
4. Click **ADD** to create a new port forwarding rule. In this guide, a rule for Remote Desktop is created.



5. The DSL-2730B allows you to select a preset rule or create a manual rule.
- Select a Service:** these are presets included in the unit's configuration.
 - Server Name:** this option allows you to create a manual port forward rule if no preset for your service exists **e.g. Remote Desktop**



6. Select the **Server Name** option to create your own rule.
7. Enter a name for the **Server Name** e.g. RDP-MyPC used in this example (RDP = Remote Desktop).



8. If you would like the rule to always be active, leave the **Schedule** as **ALWAYS**. You may also create a schedule by clicking 'View Available Schedules'
9. Enter the IP Address of the system running the Remote Desktop service. The system in this configuration was set with a Static IP – **192.168.1.3**

- External Port Start: **3389**
- External Port End: **3389**
- Protocol: **TCP**
- Internet Port Start: **3389**

NOTE:
If you have multiple PC's you wish to enable a service such as Remote Desktop on, you will need to create a different External Port Start and End for each PC e.g.

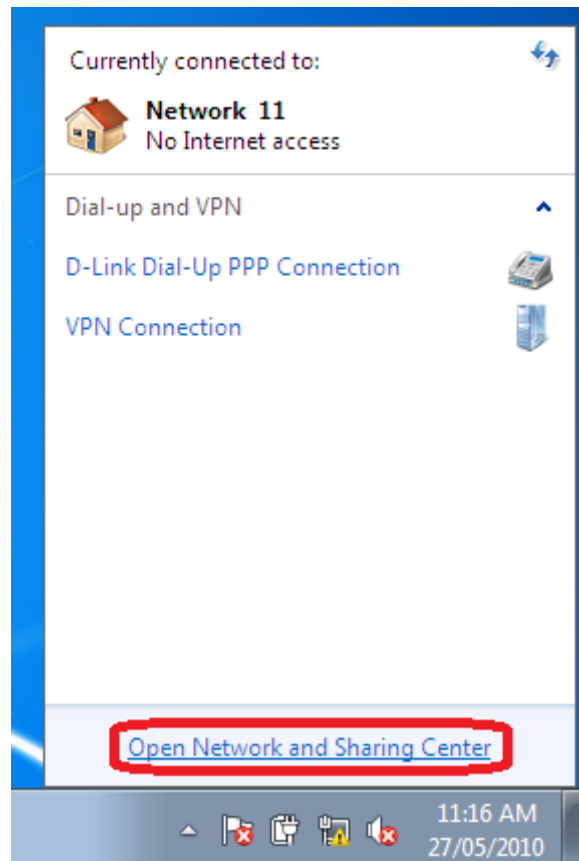
- PC 1: 3389 (standard)
- PC2: 3390
- PC3: 3391

10. Click **APPLY** to save and activate the rule created.

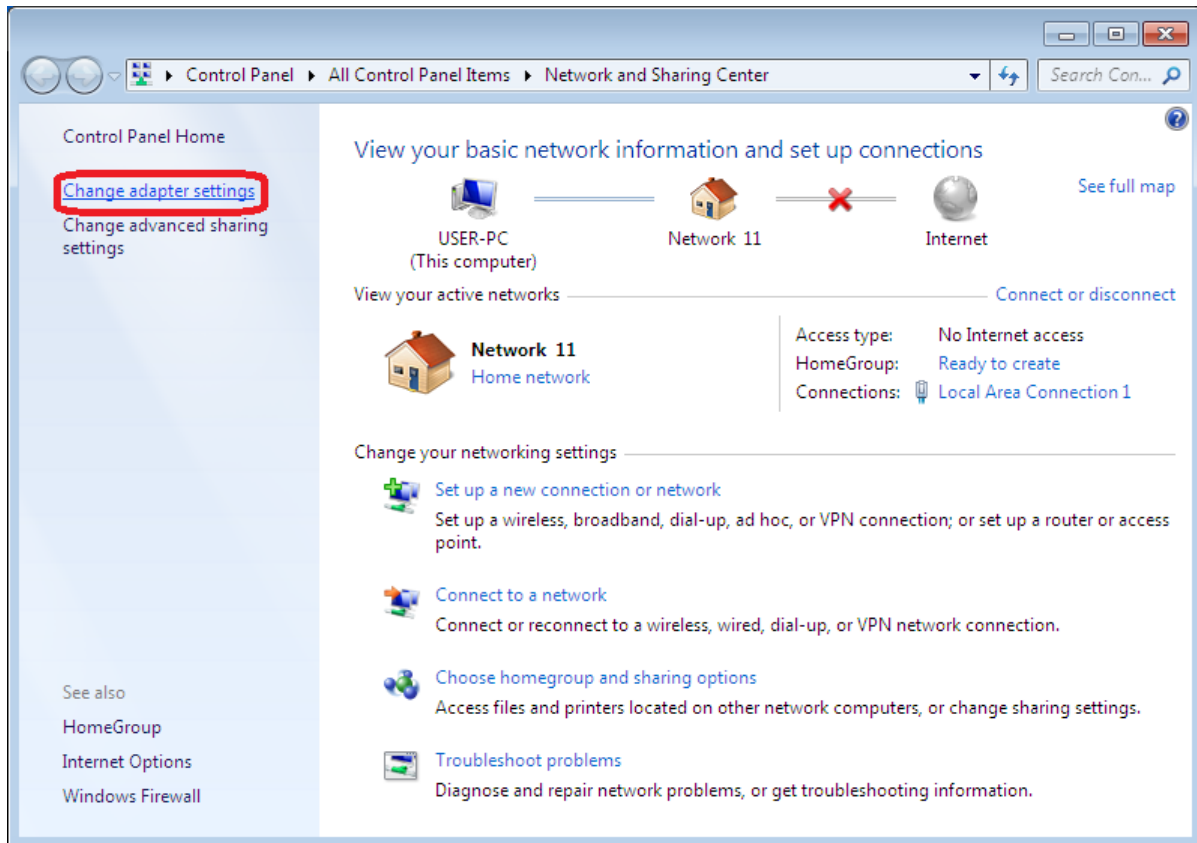
-To check whether the port is successfully forwarded, go to www.canyouseeme.org and enter the 'external port' used in your port forwarding rule and click Submit. It will return with a *Success* or *Error* message.

How to configure Windows 7 with a static IP Address.

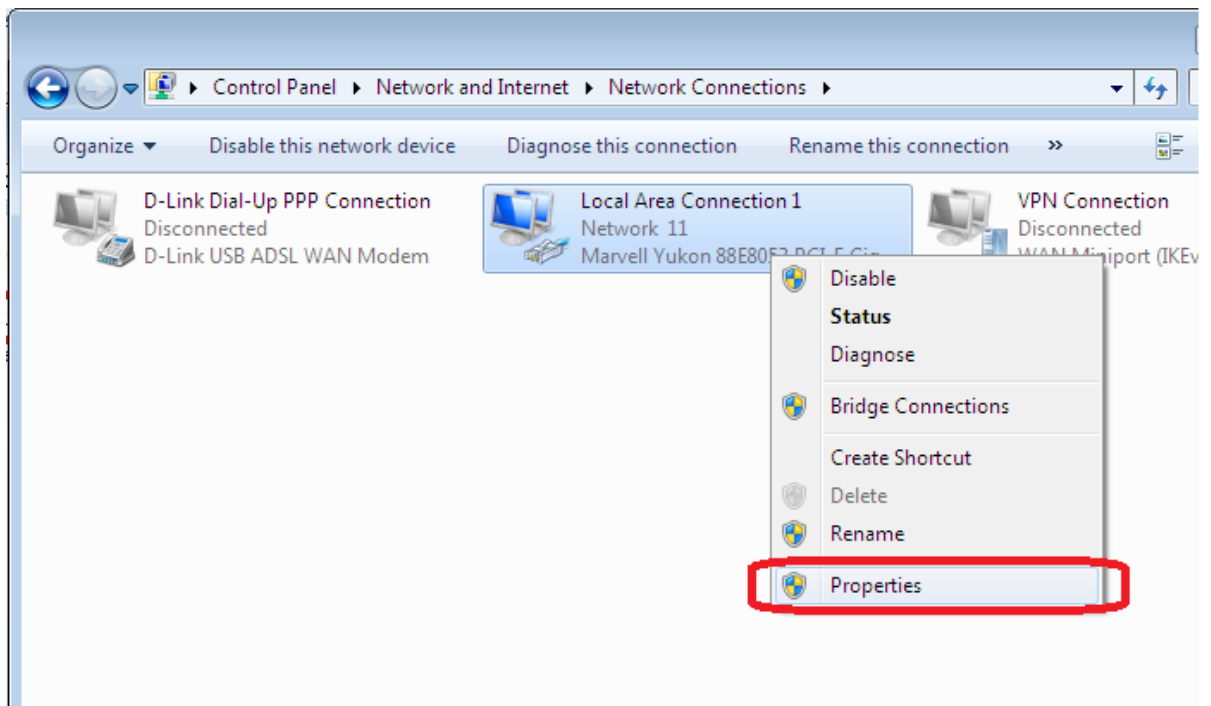
1. Click the 'Network' icon in the windows task tray.
2. Select **Open Network and Sharing Center**



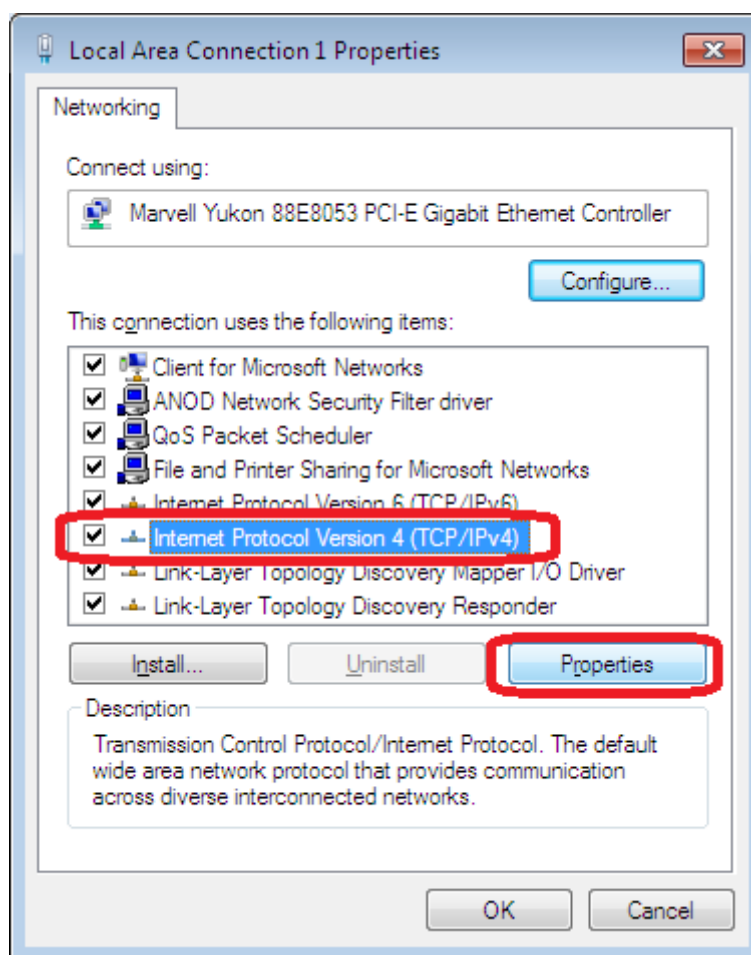
3. Select **Change Adapter Settings** from the left menu panel.



4. Right Click the icon of the adapter which you are using to access the Internet e.g. **Local Area Connection (Wired)** or **Wireless Network Connection (Wireless)** and select **Properties**.



5. Select **Internet Protocol Version 4 (TCP/IPv4)** and click the **Properties** button.



6. Select the radio button beside **Use the following IP address:**

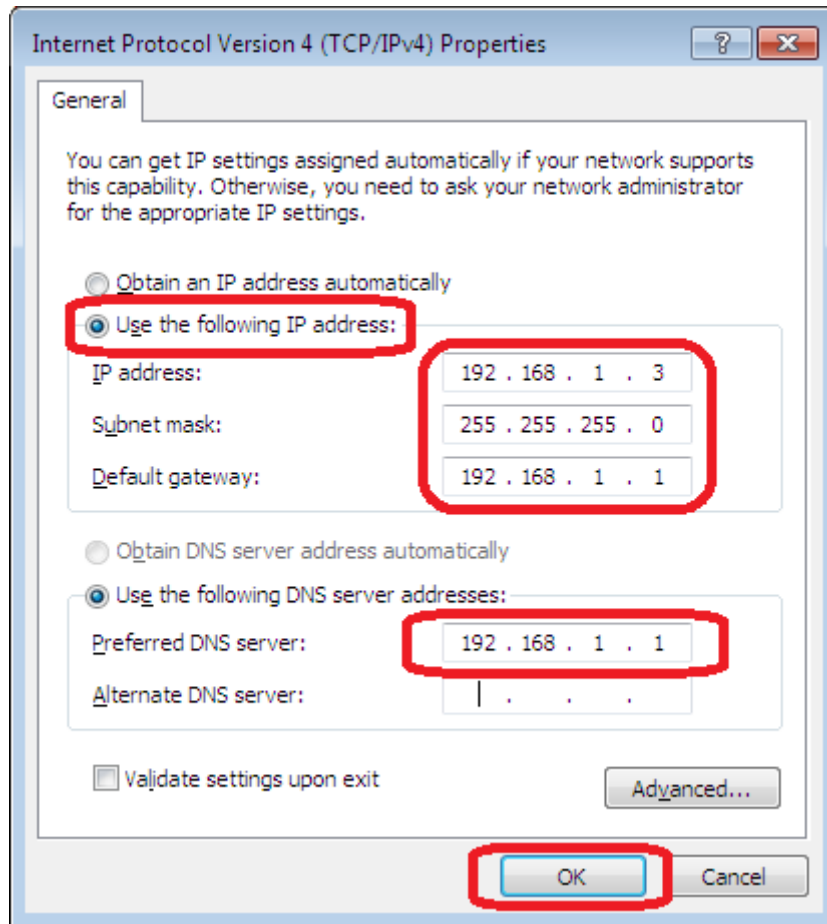
- Enter the static IP you wish to assign your PC. It will need to be in range of your router LAN subnet e.g. **192.168.1.x**

- In this example, the modem LAN IP is 192.168.1.1 and therefore 192.168.1.3 is used for this particular PC's IP Address

- Subnet mask: automatically filled for the user

- Default Gateway: **192.168.1.1** (modem IP address)

- DNS Servers: in this example the modem is used as the Primary DNS server (192.168.1.1). However this can be assigned with your ISP's DNS or alternative DNS servers.



7. Click OK to save and activate the changes, followed by OK or CLOSE on the window following.