

WIRELESS

N

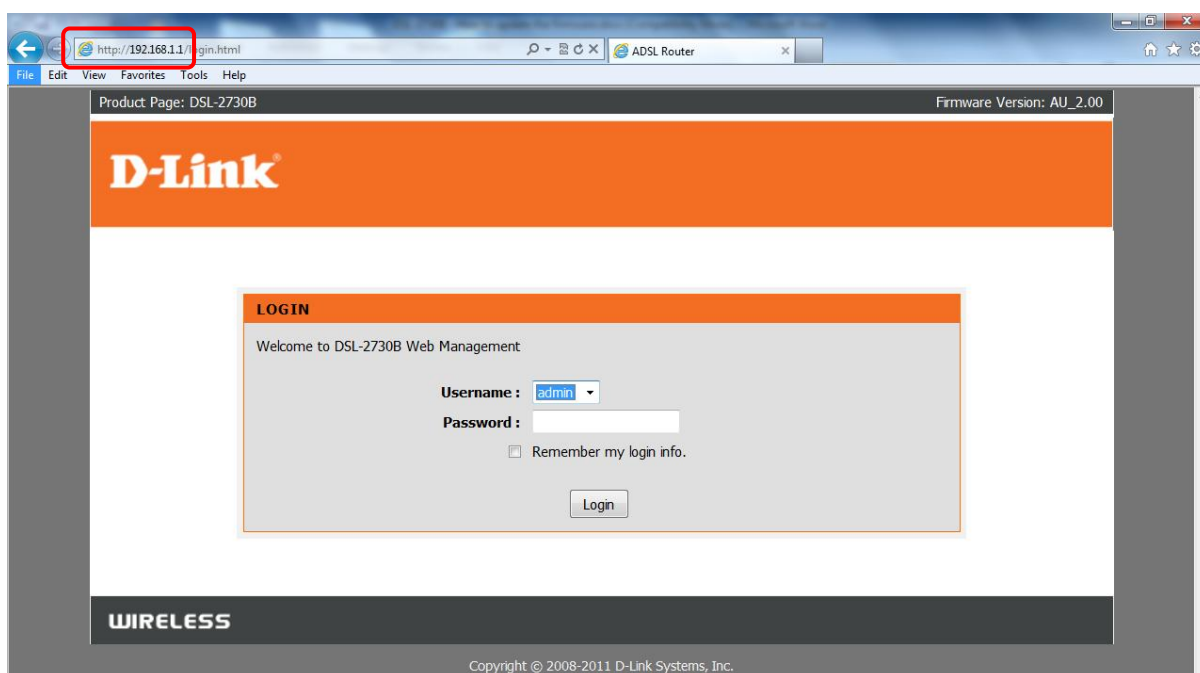
How to upgrade the firmware



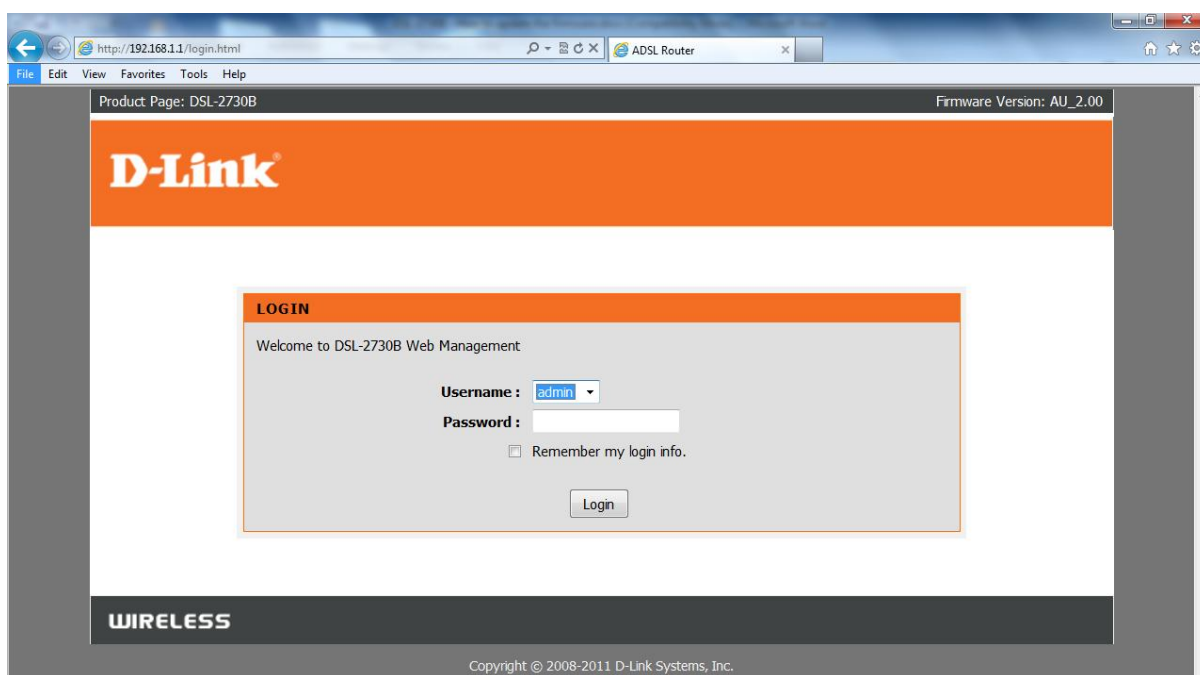
This document will detail how to update the firmware on the following models
DSL-2730B Revision T1 Firmware AU_2.00
DSL-2740B Revision F1 Firmware AU_2.00
DSL-2750B Revision B1 Firmware AU_2.00

Ensuring the firmware remains up to date can assist with functionality / improved performances as well as adding additional features.

1. Open an Internet Browser and in the address bar type in <http://192.168.1.1> then press Enter.



2. Please proceed to login with the required credentials, Default Password is **admin** then click **Login**.



NOTE: The default username is **admin** and the password is **admin**.

3. Click on MAINTENANCE > Firmware Upgrade > Browse button as per below:

Product Page: DSL-2730B [Site Map](#) Firmware Version: AU_2.00

D-Link

DSL-2730B // SETUP ADVANCED **MAINTENANCE** STATUS HELP

System
Firmware Update
Access Controls
Diagnostics
System Log
Logout

FIRMWARE UPDATE

Step 1: Obtain an updated firmware image file from your ISP.

Step 2: Enter the path to the image file location in the box below or click the "Browse" button to locate the image file.

Step 3: Click the "Update Firmware" button once to upload the new image file.

NOTE: The update process takes about 2 minutes to complete, and your DSL Router will reboot. Please DO NOT power off your router before the update is complete.

FIRMWARE UPDATE

Current Firmware Version : AU_2.00
Current Firmware Date : Oct 25 2011

Firmware File Name : **Browse...**

Update Firmware

Helpful Hints...
Please Note: This page displays your device firmware version and information that will be helpful for D-Link technicians should you require any technical support. If your router is working without issue, there should be no need to update your firmware. This information is just for your reference as it is often unnecessary to upload new firmware to your router.
[More...](#)

WIRELESS

4. Select the firmware file which you downloaded. If it is a *.zip extension you will need to unzip it first. Once selected then you may click the Update Firmware button.

*NOTE: An **example** of a firmware filename is "DSL-2730B-T1-FW-AU_2.00", as newer firmware is made available characters in the filename will change accordingly.*

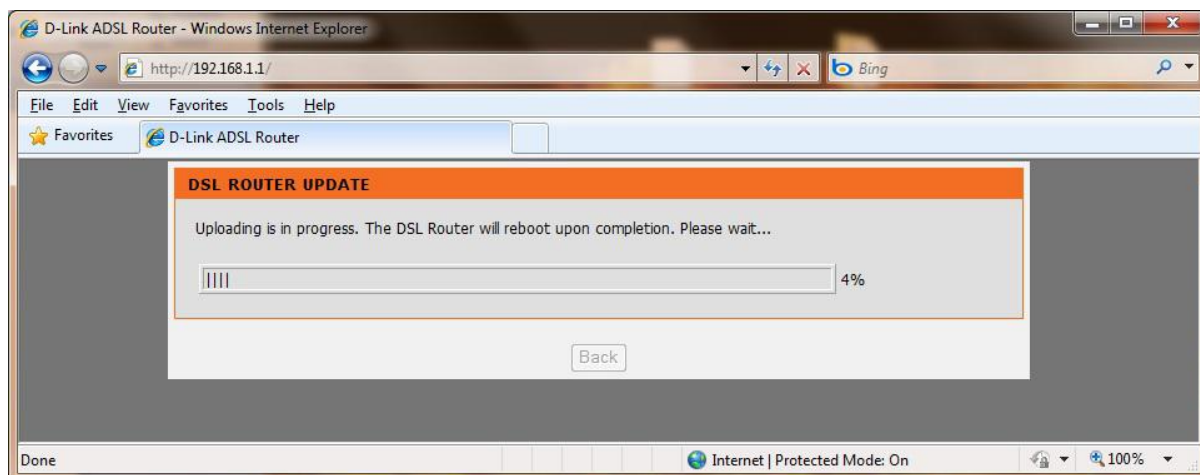
FIRMWARE UPDATE

Current Firmware Version : AU_2.00
Current Firmware Date : Oct 25 2011

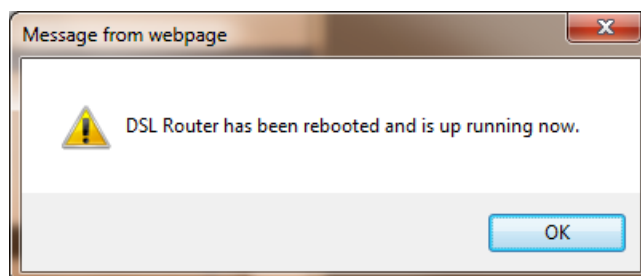
Firmware File Name : **Browse...**

Update Firmware

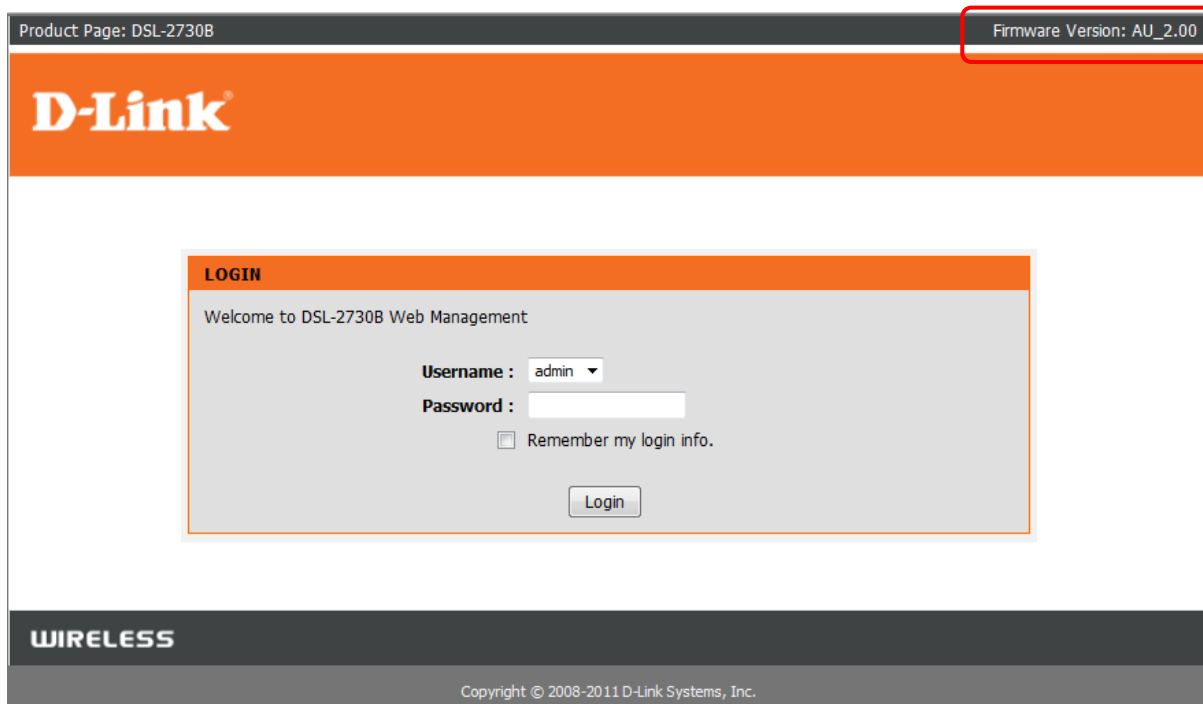
5. The DSL-2730B will now begin to upload the firmware file. Please wait for the process to complete.



6. Once completed, click on the OK button:

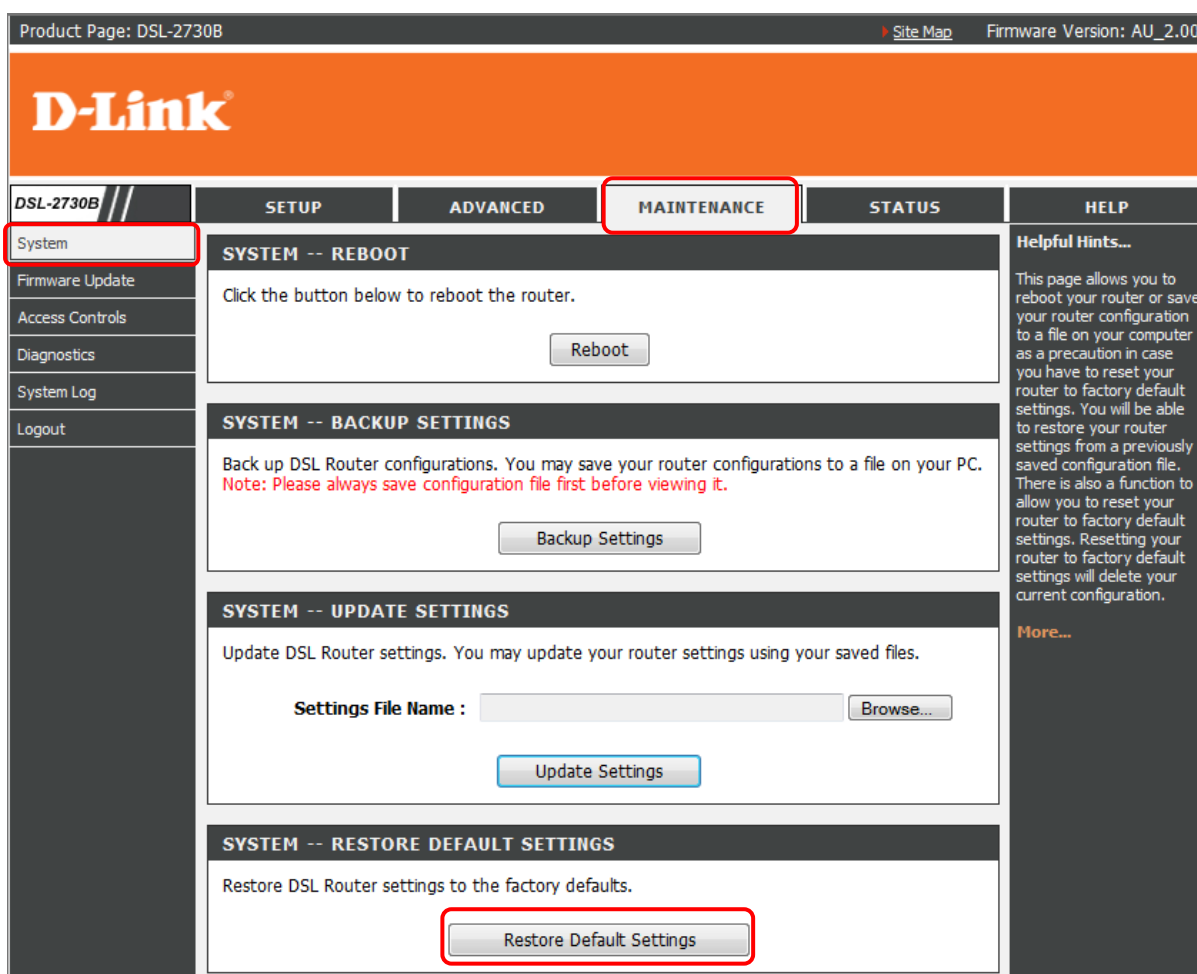


7. You will be requested to login again. Notice at the top right side, the firmware will display the firmware file which you uploaded.

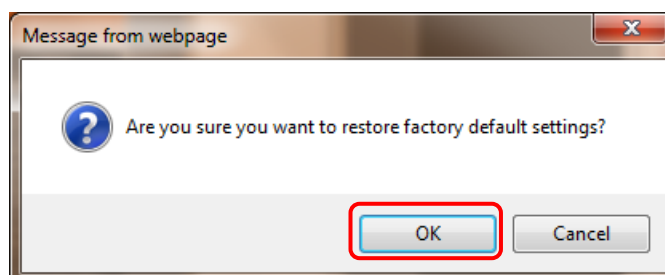


8. Proceed to login to the DSL-2730B Web Configuration using Steps 1 & 2.

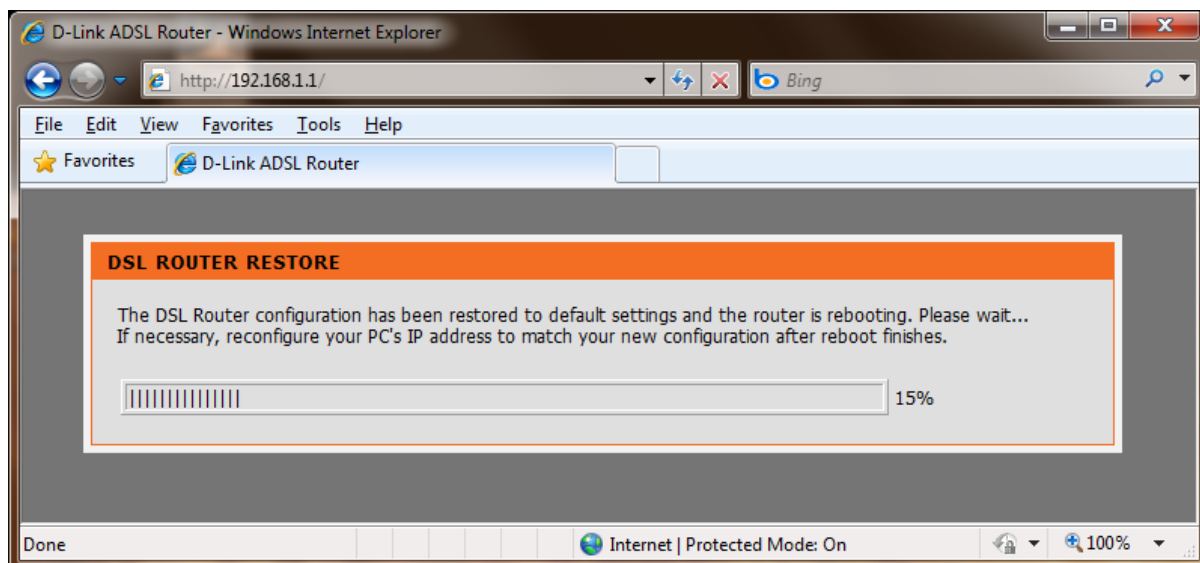
9. Now click on **MAINTENANCE** > **System** > **Restore Default Settings** button.



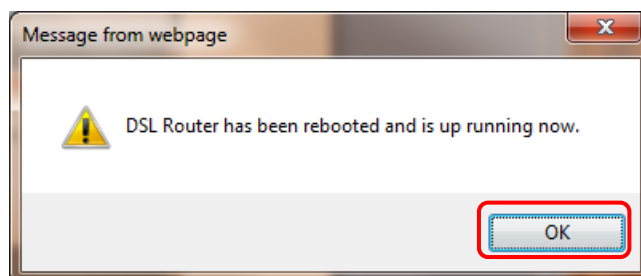
10. At the prompt, Click the OK button:



11. The DSL-2730B will now reboot with the factory default settings applied. Please wait for this process to complete.



12. At the below prompt, click the OK button:



13. The DSL-2730B firmware update process has been completed.

IMPORTANT:

You will need to login again, please manually configure the DSL-2730B. Do not use a saved configuration file as different firmware versions can have different characteristics.