

# **D-Link<sup>®</sup>**

## **TECH SUPPORT**

**How do I connect my computer to a wireless network?**

This document guides you through steps on how to connect to a Wi-Fi (Wireless Network) in:

[Windows XP](#)

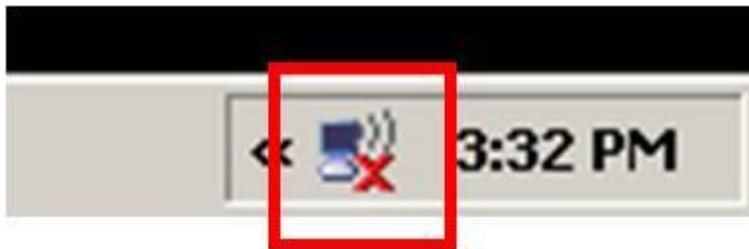
[Windows Vista](#)

[Windows 7](#)

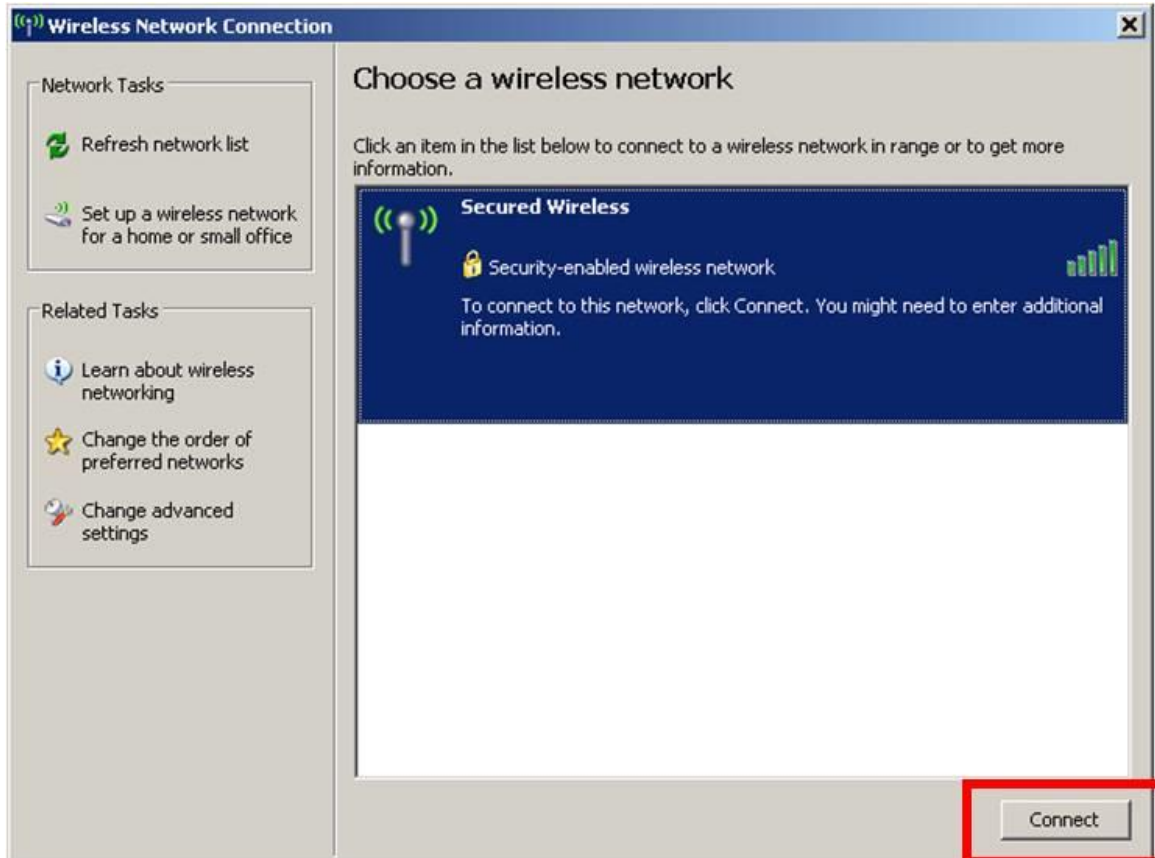
[Windows 8](#)

## How do I connect to a wireless network in Windows XP?

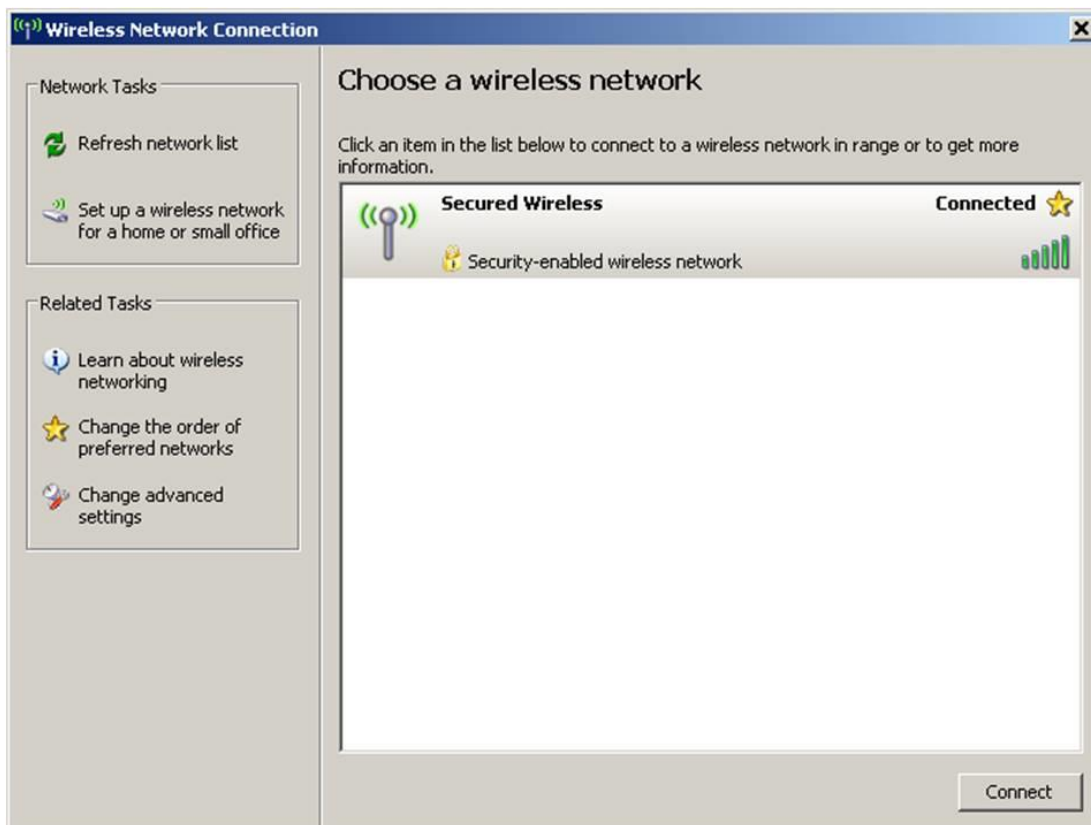
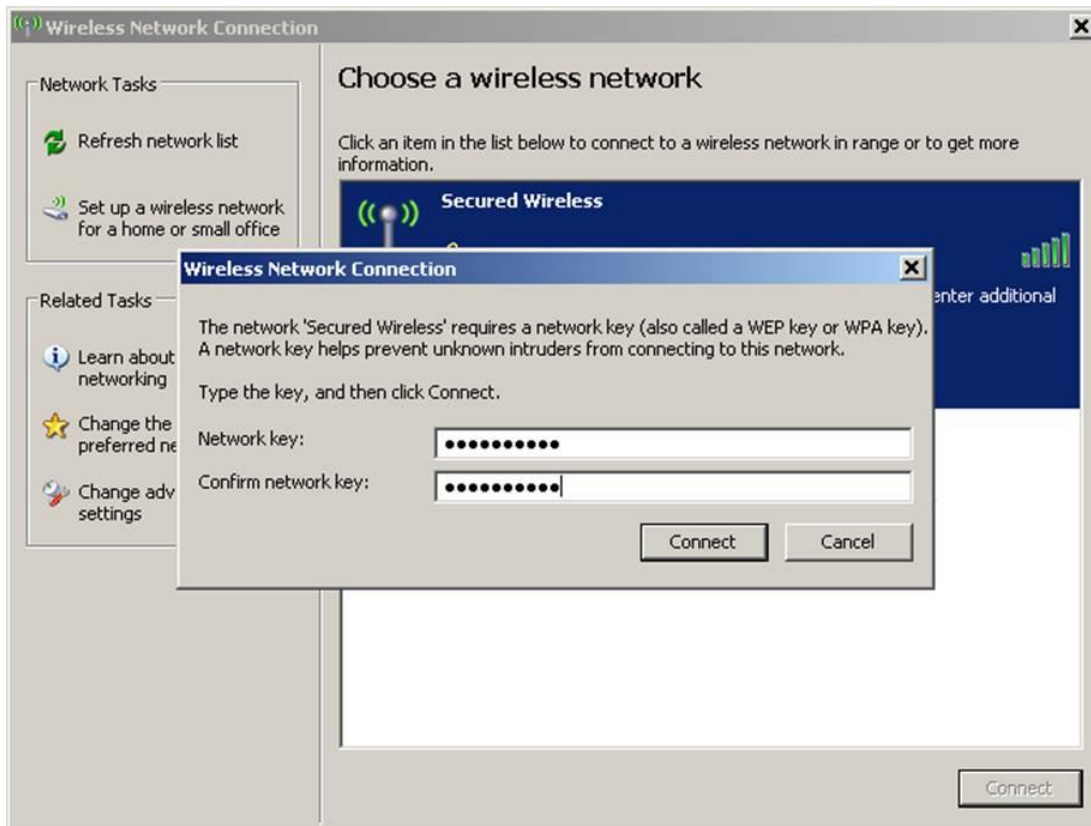
**Step 1:** Double Click on the Wireless Connection Icon in the bottom right corner of the screen (by the clock)



**Step 2:** Select the wireless network you want to connect to and click **Connect**

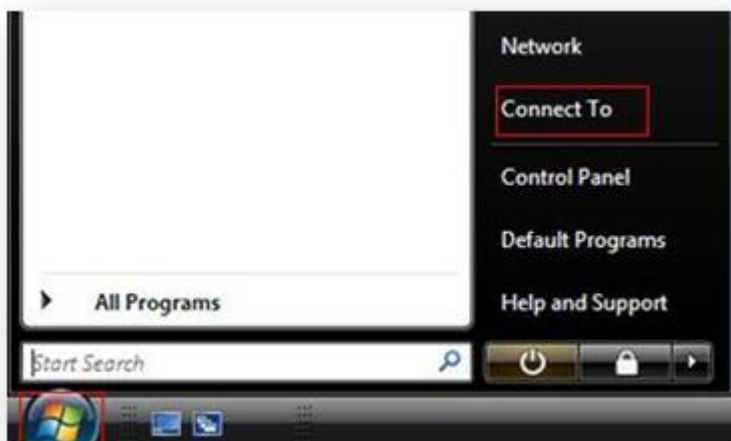


**Step 3:** If your wireless network is Secured, you will be prompted to enter the password. Enter the appropriate password and click **Connect**



## How do I connect to a wireless network in Windows Vista?

**Step 1:** Click on the Start button (Windows logo) then click **Control panel**.



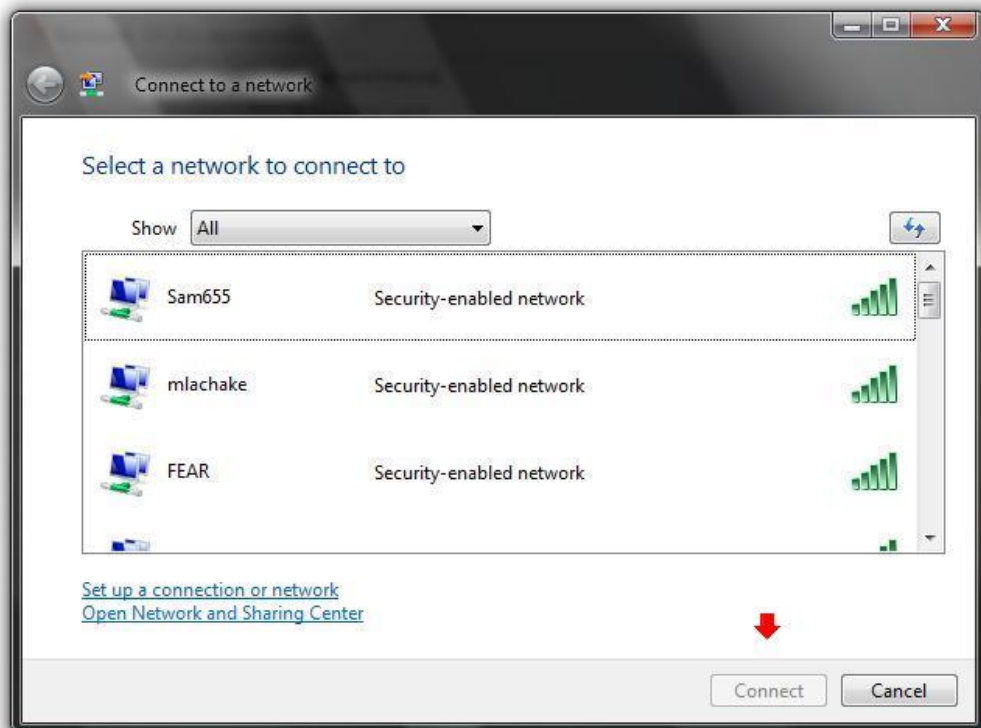
**Step 2:** Under Network and Internet click **View network status and tasks**.



**Step 3:** In the list of Tasks on the left side click **Connect to a network**.



**Step 4:** Select the wireless network name you want to connect to and click **Connect**.



**Step 5:** If the network is secured with a password you will be prompted to enter the password. Type the network security password and click **OK**.



You will be asked to *Save this network* and *Save this connection automatically*. Click **Close**.



## How do I connect to a wireless network in Windows 7?

**Step 1:** Click on the network icon in the bottom right corner of your screen (by the clock)



**Step 2:** Select the wireless network you want to connect to and click **Connect**



**Step 3:** If the network is secured with a password, you will be prompted to enter it. Enter the password and click OK.



**Step 4:** Once Connected, you will be prompted to select the Network Type. Select the option that suites your needs.





## How do I connect to a wireless network in Windows 8?

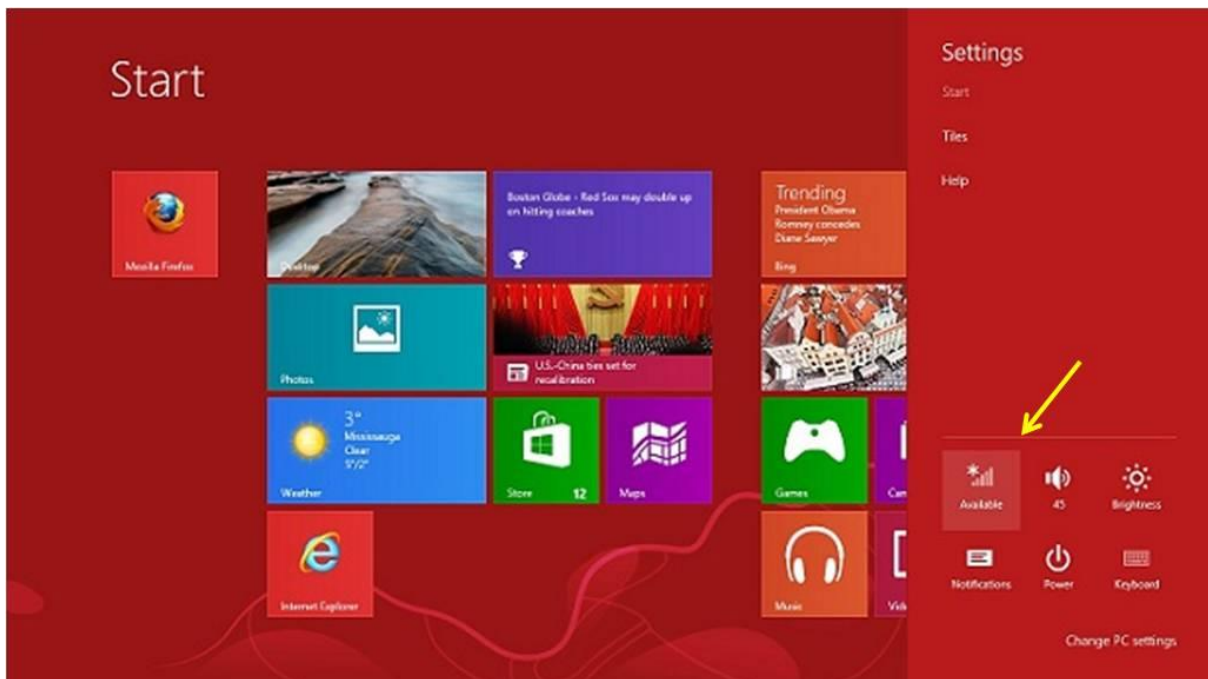
There are two ways this can be done depending on whether you are using a touch screen or not using a touch screen:

### Option 1 – Using a touch screen

**Step 1:** From the desktop, move your cursor to the top right corner, this will bring up the CHARMS bar. Click on **Settings**.



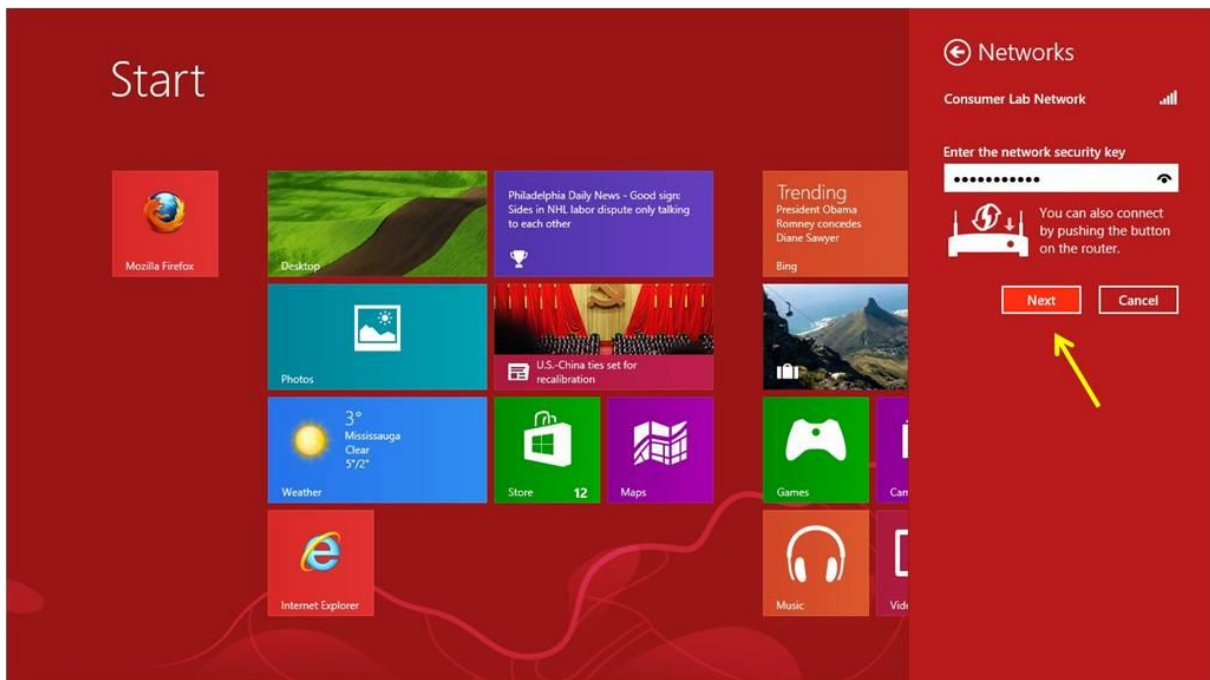
**Step 2:** Click on the **Wireless Connection** Icon



**Step 3:** Select **your network** and click **Connect**



**Step 4:** If the network is secured with a password, you will be prompted to enter it. Enter the password and click **Next**.



## **Option 2 – Not using a touch screen**

**Step 1:** Press the Windows Key on your keyboard. This should bring up your desktop.



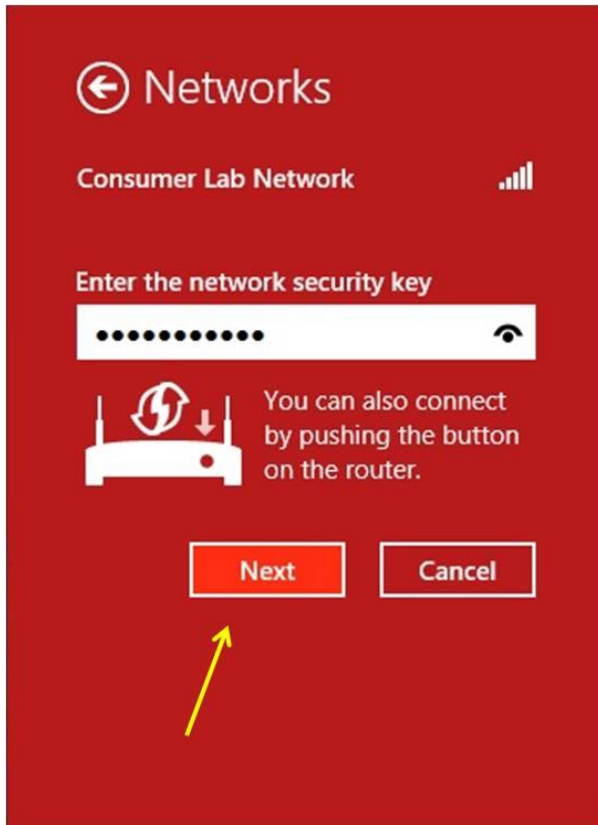
**Step 2:** Click on the **Wireless Icon** in the bottom left corner of your screen (by the clock)



**Step 3:** Select your wireless network and click **Connect**



**Step 4:** If the network is secured with a password, you will be prompted to enter it. Enter the password and click **Next**



You are now connected.

