

DSL-302G Screenies

FW: R2.01M.B18.AU

PPPoA VC-Mux

DSL-302G Configuration Manager GUI - Microsoft Internet Explorer

File Edit View Favorites Tools Help

Back Search Favorites Media Norton AntiVirus

D-Link
Building Networks For People

D-Link

- Quick Configuration
- System View
- LAN
- WAN
- Bridging
- Admin

Quick Configuration

Use this page to quickly configure the system.

Refresh Rate: 5 Minutes

Connection Type:	PPPoA VC-Mux
VPI:	PPPoA VC-Mux
VCI:	PPPoA LLC PPPoE VC-Mux PPPoE LLC
PPP	
Security Protocol:	<input type="radio"/> PAP <input checked="" type="radio"/> CHAP
Username:	guest
Password:

Save & Reboot Delete Cancel Help

PPP Information			
IP Address	Mask	Gateway	Connection Status
0.0.0.0	0.0.0.0	0.0.0.0	VC down Connect

Copyright © 2002 D-Link, Inc. All rights reserved.

Done Internet

DSL-302G Configuration Manager GUI - Microsoft Internet Explorer

File Edit View Favorites Tools Help

Back Search Favorites Media Norton AntiVirus

D-Link
Building Networks For People

D-Link

- Quick Configuration
- System View
- LAN
 - LAN Config
 - DHCP Mode
- WAN
 - DSL Status
 - DSL Mode
 - PPP
 - EOA
 - IPOA
 - NAT
- Bridging
 - Bridging
 - ATM VCC
- Admin
 - User Config
 - Save & Reboot
 - Image Upgrade
 - Alarm
 - Diagnostics
 - Remote Access

Quick Configuration

Use this page to quickly configure the system.

Refresh Rate: 5 Minutes

Connection Type:	PPPoE VC-Mux
VPI:	8
VCI:	35
PPP	
Security Protocol:	<input type="radio"/> PAP <input checked="" type="radio"/> CHAP
Username:	guest
Password:	•••••

PPP Information			
IP Address	Mask	Gateway	Connection Status
0.0.0.0	0.0.0.0	0.0.0.0	VC down <input type="button" value="Connect"/>


Copyright © 2002 D-Link, Inc. All rights reserved.

Done Internet

System View

Use this page to get the summary on the existing configuration of your device.

Refresh Rate:

Device		DSL					
Model:	DSL-302G	Operational Status:	 Startup Handshake				
S/W Version:	R2.01M.B18.AU (021206a/T93.3.38)	DSL Version:	T93.3.38				
Mode:	Bridging	Standard:	G.dmt				
Up Time:	0:5:17	Up		Down			
Time:	Thu Jan 01 00:05:17 1970	Speed	Latency	Speed	Latency		
Time Zone:	GMT	0 Kbps	-	0 Kbps	-		
Daylight Saving Time:	OFF						
Name:	-						
Domain Name:	-						
WAN Interfaces							
Interface	Encapsulation	IP Address	Mask	Gateway	Lower Interface	VPI/VCI	Status
ppp-0	PPPoA	0.0.0.0	0.0.0.0	0.0.0.0	aal5-0	8/35	VC down Connect

Copyright © 2002 D-Link, Inc. All rights reserved.

DSL-302G Configuration Manager GUI - Microsoft Internet Explorer

File Edit View Favorites Tools Help

Back Search Favorites Media Norton AntiVirus

D-Link

Building Networks For People

- D-Link
 - Quick Configuration
 - System View
 - LAN
 - LAN Config
 - DHCP Mode
 - WAN
 - Bridging
 - Admin

LAN Configuration

Use this page to set the LAN configuration, which determines how your device is identified on the network.

LAN Configuration	
System Mode:	Bridging
LAN IP Address:	10 1 1 1
LAN Network Mask:	255 0 0 0
IGMP:	<input type="radio"/> Enable <input checked="" type="radio"/> Disable

USB Configuration	
USB IP Address:	10 1 1 2
USB Network Mask:	255 0 0 0
IGMP:	<input type="radio"/> Enable <input checked="" type="radio"/> Disable

Copyright © 2002 D-Link, Inc. All rights reserved.

Done Internet

D-Link

[Quick Configuration](#)[System View](#)

LAN

[LAN Config](#)[DHCP Mode](#)

WAN

Bridging

Admin

Dynamic Host Configuration Protocol (DHCP) Configuration

Use this page to set and configure the Dynamic Host Configuration Protocol mode for your device. With DHCP, IP addresses for your LAN are administered and distributed as needed by this device or an ISP device. See help for a detailed explanation of DHCP.

DHCP Mode:

Start IP Address	End IP Address	Domain Name	Gateway Address	Status	Action(s)
10.1.1.3	10.1.1.34	-	0.0.0.0	Enabled	  

Copyright © 2002 D-Link, Inc. All rights reserved.

DSL-302G Configuration Manager GUI - Microsoft Internet Explorer

File Edit View Favorites Tools Help

Back Search Favorites Media Norton AntiVirus

D-Link

Building Networks For People

- D-Link
- Quick Configuration
- System View
- LAN
- WAN
 - DSL Status
 - DSL Mode
 - PPP
 - EOA
 - IPOA
 - NAT
- Bridging
- Admin

DSL Status

This page displays DSL Status Information

Refresh Rate: 10 Seconds

Counters	Local		Remote	
	Intrlvd	Fast	Intrlvd	Fast
FEC:	0	0	0	0
CRC:	0	0	0	0
NCD:	0	0	0	0
OCD:	0	0	-	-
HEC:	0	0	0	0
SEF:	0		0	
LOS:	0		0	

DSL Status	
Operational Status:	Startup Handshake
Last Failed Status:	0x18
Startup Progress:	0x0

Failures	Local	Remote
NCD:	0	0
SEF:	0	0
LOS:	0	0
LCD:	0	0

Copyright © 2002 D-Link, Inc. All rights reserved.

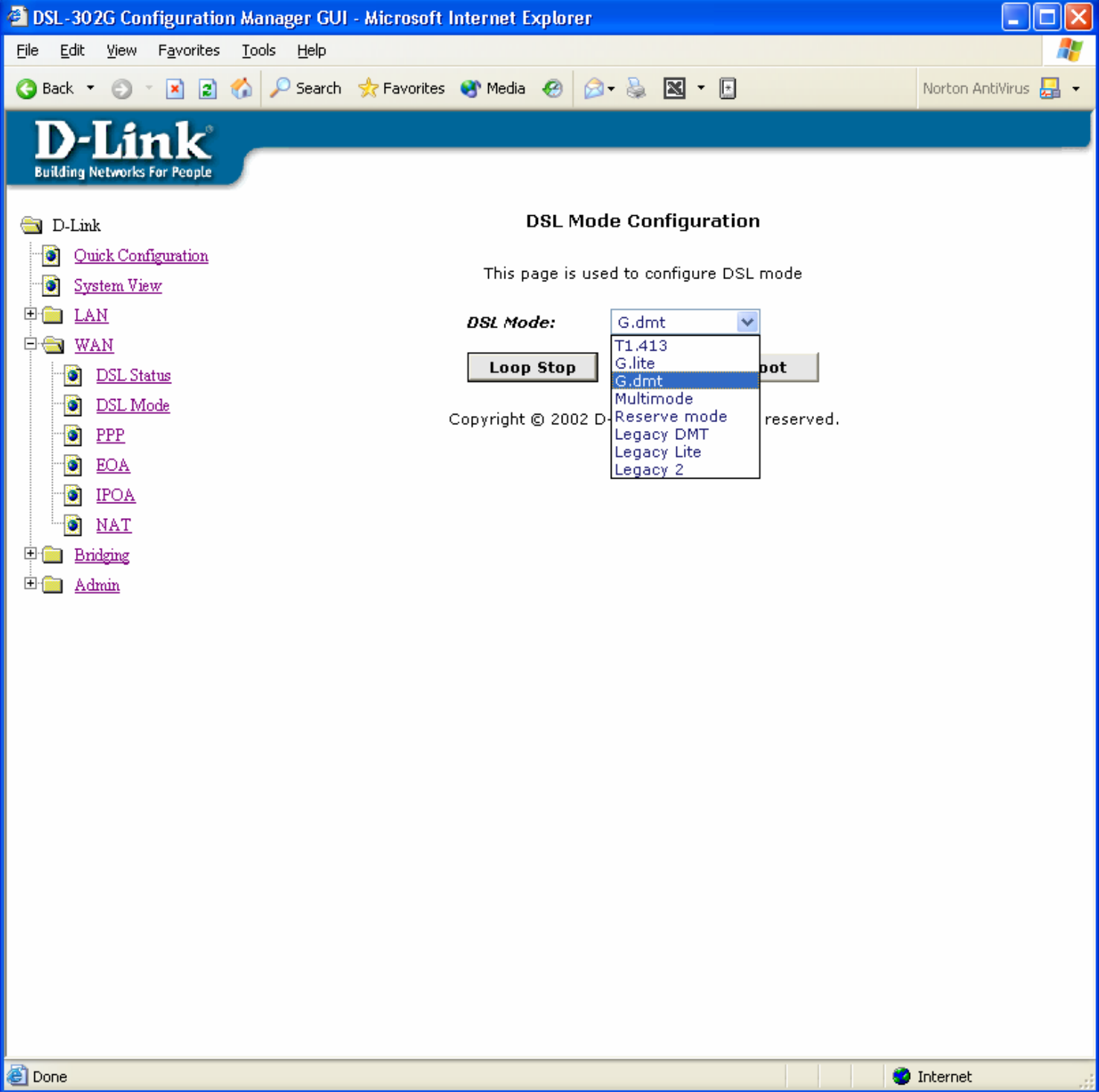
Done Internet



DSL Parameter

DSL Parameters and Status	
Vendor ID:	00B5GSPN
Revision Number:	T93.3.38
Serial Number:	
Local Tx Power:	0.0 dB
Remote Tx Power:	0.0 dB
Local Line Atten.:	0.5 dB
Remote Line Atten.:	0.5 dB
Local SNR Margin:	0.0 dB
Remote SNR Margin:	0.0 dB
Self Test:	Passed
DSL Standard:	T1.413
Trellis Coding:	Disable
Framing Structure:	Framing-0

Config Data	Up		Down	
	Intrlvd	Fast	Intrlvd	Fast
AS0(kbps):	-	-	0	0
AS1(kbps):	-	-	0	0
LS0(kbps):	0	0	-	-
LS1(kbps):	0	0	-	-
RValue:	0	0	0	0
SValue:	0		0	
DValue:	0		0	



DSL-302G Configuration Manager GUI - Microsoft Internet Explorer

File Edit View Favorites Tools Help

Back Search Favorites Media Norton AntiVirus


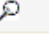
D-Link
Building Networks For People

Point to Point Protocol (PPP) Configuration

This page is used to Configure and View PPP interfaces.

Inactivity TimeOut(mins) for startondata PPP Interfaces:

Ignore WAN to LAN traffic while monitoring inactivity:

Interface	VC	Interface Sec Type	Protocol	WAN IP	Gateway IP	Default Route	Use DHCP	Use DNS	Oper. Status	Action
ppp-0	aal5-0	Public	PPPoA	0.0.0.0	0.0.0.0	Enable	Disable	Enable	Disconnect	 

Copyright © 2002 D-Link, Inc. All rights reserved.

Internet



PPP Interface - Modify

Basic Information	
<i>PPP Interface:</i>	ppp-0
<i>ATM VC:</i>	aal5-0
<i>Protocol:</i>	PPPoA
<i>Default Route:</i>	Enabled
<i>Status:</i>	Start <input type="button" value="v"/>
<i>Security Info:</i>	Start Stop StartOnData
<i>Security Protocol:</i>	<input checked="" type="radio"/> CHAP
<i>Login Name:</i>	guest
<i>Password:</i>	•••••



PPP Interface - Detail

Basic Information	
PPP Interface:	ppp-0
ATM VC:	aal5-0
Interface Sec Type:	Public
Status:	Start
Protocol:	PPPoA
Use DHCP:	Disable
Use DNS:	Enable
Default Route:	Enable
Oper. Status:	Disconnect
Last Fail Cause:	VC down
PPP IP Status	
WAN IP Address:	0.0.0.0
Gateway IP Address:	0.0.0.0
DNS:	0.0.0.0
SDNS:	0.0.0.0
Security Information	
Security Protocol:	CHAP
Login Name:	guest

Close

Refresh

Help

PPP Interface - Add

Basic Information	
PPP Interface:	<input type="text" value="ppp-1"/>
ATM VC:	<input type="text" value="aal5-0"/>
Interface Sec Type:	<input type="text" value="Public"/>
Status:	<input type="text" value="Public"/> <input type="text" value="Private"/> <input type="text" value="DMZ"/>
Protocol:	<input type="radio"/> PPPoA <input checked="" type="radio"/> PPPoE
Service Name:	<input type="text"/>
Use DHCP:	<input type="radio"/> Enable <input checked="" type="radio"/> Disable
Use DNS:	<input type="radio"/> Enable <input checked="" type="radio"/> Disable
Default Route:	<input checked="" type="radio"/> Enable <input type="radio"/> Disable
Security Information	
Security Protocol:	<input checked="" type="radio"/> PAP <input type="radio"/> CHAP
Login Name:	<input type="text"/>
Password:	<input type="text"/>

DSL-302G Configuration Manager GUI - Microsoft Internet Explorer

File Edit View Favorites Tools Help

Back Search Favorites Media Norton AntiVirus

D-Link

Building Networks For People

RFC1483/Ethernet over ATM(EoA) Config

This Page is used to View, Add, Modify and Delete EOA Interfaces.

Interface	Interface Sec Type	Lower Interface	Config IP Address	Netmask	Use DHCP	Default Route	Gateway Address	Status	Action
No Interface Found!									

[Add](#) [Refresh](#) [Help](#)

Copyright © 2002 D-Link, Inc. All rights reserved.

- D-Link
 - [Quick Configuration](#)
 - [System View](#)
 - LAN
 - [DSL Status](#)
 - [DSL Mode](#)
 - [PPP](#)
 - [EOA](#)
 - [IPOA](#)
 - [NAT](#)
 - WAN
 - [Bridging](#)
 - [Admin](#)

Done Internet



EOA Interface - Add

EOA Information	
<i>EOA Interface:</i>	<input type="text" value="eoa-0"/>
<i>Lower Interface:</i>	<input type="text" value="aal5-0"/>
<i>Conf. IP Address:</i>	<input type="text" value="0"/> <input type="text" value="0"/> <input type="text" value="0"/> <input type="text" value="0"/>
<i>Netmask:</i>	<input type="text" value="0"/> <input type="text" value="0"/> <input type="text" value="0"/> <input type="text" value="0"/>
<i>Use DHCP:</i>	<input type="radio"/> Enable <input checked="" type="radio"/> Disable



- D-Link
 - Quick Configuration
 - System View
 - LAN
 - WAN
 - DSL Status
 - DSL Mode
 - PPP
 - EOA
 - IPOA
 - NAT
 - Bridging
 - Admin

IP over ATM (IPoA) Configuration

This Page is used to View, Add and Delete IPoA Interfaces.

Interface	Interface Sec Type	RFC 1577	Lower Interface	Peer IP Address	Config IP Address	Netmask	Gateway Address	Status	Action
No IPoA Interface!									

[Add](#) [Map](#) [Refresh](#) [Help](#)

Copyright © 2002 D-Link, Inc. All rights reserved.



IPoA Interface - Add

IPoA Information	
<i>IPoA Interface:</i>	<input type="text" value="ipoa-0"/> ▾
<i>Conf. IP Address:</i>	<input type="text" value="0"/> <input type="text" value="0"/> <input type="text" value="0"/> <input type="text" value="0"/>
<i>Netmask:</i>	<input type="text" value="0"/> <input type="text" value="0"/> <input type="text" value="0"/> <input type="text" value="0"/>
<i>RFC 1577:</i>	<input type="radio"/> Yes <input checked="" type="radio"/> No
<i>Use DHCP:</i>	<input type="radio"/> Enable <input checked="" type="radio"/> Disable
<i>Default Route:</i>	<input checked="" type="radio"/> Enable <input type="radio"/> Disable
<i>Gateway IP Address:</i>	<input type="text"/> <input type="text"/> <input type="text"/> <input type="text"/>

Copyright © 2002 D-Link, Inc. All rights reserved.

DSL-302G Configuration Manager GUI - Microsoft Internet Explorer

File Edit View Favorites Tools Help

Back Search Favorites Media Norton AntiVirus

D-Link
Building Networks For People

Network Address Translation (NAT) Configuration

Use this page to configure Network Address Translation, a security protocol in which the device translates the IP addresses of your LAN computers to new addresses before sending data out on the Internet.

NAT Options: NAT Global Info

Enable Disable

NAT Global Information	
TCP Idle Timeout(sec):	86400
TCP Close Wait(sec):	60
TCP Def Timeout(sec):	60
UDP Timeout(sec):	300
ICMP Timeout(sec):	5
GRE Timeout(sec):	300
Default Nat Age(sec):	240
NAPT Port Start:	50000
NAPT Port End:	51023

Submit Global Stats Cancel Refresh Help

Copyright © 2002 D-Link, Inc. All rights reserved.

Done Internet

DSL-302G Configuration Manager GUI - Microsoft Internet Explorer

File Edit View Favorites Tools Help

Back Search Favorites Media Norton AntiVirus

D-Link

Building Networks For People

Bridge Configuration

Use this page to Add and Modify Bridging information

Interface Name	Action
eth-0	
usb-0	
eth-0 <input type="text"/>	<input type="button" value="Add"/>

Copyright © 2002 D-Link, Inc. All rights reserved.

Done Internet

- D-Link
 - Quick Configuration
 - System View
 - LAN
 - WAN
 - DSL Status
 - DSL Mode
 - PPP
 - EOA
 - IPOA
 - NAT
 - Bridging
 - Bridging
 - ATM VCC
 - Admin

DSL-302G Configuration Manager GUI - Microsoft Internet Explorer



File Edit View Favorites Tools Help

Back Search Favorites Media Norton AntiVirus

D-Link
Building Networks For People

ATM VC Configuration

This page is used to view and configure ATM VCs

Interface	VPI	VCI	Mux Type	Max Proto per AAL5	Action(s)
aal5-0	8	35	VC	1	 

Add **Refresh** **Help**

Copyright © 2002 D-Link, Inc. All rights reserved.

- D-Link
 - Quick Configuration
 - System View
 - LAN
 - WAN
 - DSL Status
 - DSL Mode
 - PPP
 - EOA
 - IPOA
 - NAT
 - Bridging
 - Bridging
 - ATM VCC
 - Admin

Internet

ATM VC Interface - Modify - Microsoft Internet Explorer

ATM VC Interface - Modify

Basic Information	
<i>VC Interface:</i>	aal5-0
<i>VPI:</i>	<input type="text" value="8"/>
<i>VCI:</i>	<input type="text" value="35"/>
<i>Mux Type:</i>	<input type="text" value="VC"/>
<i>Max Proto per AAL5:</i>	<input type="text" value="1"/>

Copyright © 2002 D-Link, Inc. All rights reserved.

ATM VC - Add - Microsoft Internet Explorer

ATM VC - Add

Basic Information	
<i>VC Interface:</i>	<input type="text" value="aal5-1"/>
<i>VPI:</i>	<input type="text"/>
<i>VCI:</i>	<input type="text"/>
<i>Mux Type:</i>	<input type="text" value="LLC"/>
<i>Max Proto per AAL5:</i>	<input type="text" value="2"/>

Copyright © 2002 D-Link, Inc. All rights reserved.



- D-Link
 - Quick Configuration
 - System View
 - LAN
 - LAN Config
 - DHCP Mode
 - WAN
 - DSL Status
 - DSL Mode
 - PPP
 - EOA
 - IPOA
 - NAT
 - Bridging
 - Bridging
 - ATM VCC
 - Admin
 - User Config
 - Save & Reboot
 - Image Upgrade
 - Alarm
 - Diagnostics
 - Remote Access

User Configuration

This page displays user information. Use this page to add/delete users and change your password. Your new username/password can be up to 128 characters and is case-sensitive.

User ID	Privilege	Action(s)
admin	Root	

[Add](#) [Refresh](#) [Help](#)

Copyright © 2002 D-Link, Inc. All rights reserved.

DSL-302G Configuration Manager GUI - Microsoft Internet Explorer

File Edit View Favorites Tools Help

Back Search Favorites Media Norton AntiVirus

D-Link

Building Networks For People

Save & Reboot

Use this page to save changes to system memory and reboot your system with different configurations.

Reboot Mode:

Copyright © 2002 D-Link, Inc. All rights reserved.

- D-Link
 - Quick Configuration
 - System View
 - LAN
 - LAN Config
 - DHCP Mode
 - WAN
 - DSL Status
 - DSL Mode
 - PPP
 - EOA
 - IPOA
 - NAT
 - Bridging
 - Bridging
 - ATM VCC
 - Admin
 - User Config
 - Save & Reboot
 - Image Upgrade
 - Alarm
 - Diagnostics
 - Remote Access

Done Internet

DSL-302G Configuration Manager GUI - Microsoft Internet Explorer

File Edit View Favorites Tools Help

Back Search Favorites Media Norton AntiVirus

D-Link

Building Networks For People

Image Upgrade

This page is used to upload a new image to the system.

Current Firmware Version:	R2.01M.B18.AU(021206a/T93.3.38)
Upgrade File:	<input type="text"/> <input type="button" value="Browse..."/>

Copyright © 2002 D-Link, Inc. All rights reserved.

- D-Link
 - Quick Configuration
 - System View
 - LAN
 - LAN Config
 - DHCP Mode
 - WAN
 - DSL Status
 - DSL Mode
 - PPP
 - EOA
 - IPOA
 - NAT
 - Bridging
 - Bridging
 - ATM VCC
 - Admin
 - User Config
 - Save & Reboot
 - Image Upgrade
 - Alarm
 - Diagnostics
 - Remote Access

Done Internet

DSL-302G Configuration Manager GUI - Microsoft Internet Explorer

File Edit View Favorites Tools Help

Back Search Favorites Media Norton AntiVirus

D-Link

Building Networks For People

Alarm

The alarms shown in the table have been recorded in response to system events. See Help for a list of events that cause alarms.

Refresh Rate: 5 Minutes

Alarms/Traps Information
Thu Jan 01 00:00:06 1970 : STATUS ALARM : System Up

Clear Refresh Help

Copyright © 2002 D-Link, Inc. All rights reserved.

- D-Link
 - Quick Configuration
 - System View
 - LAN
 - LAN Config
 - DHCP Mode
 - WAN
 - DSL Status
 - DSL Mode
 - PPP
 - EOA
 - IPOA
 - NAT
 - Bridging
 - Bridging
 - ATM VCC
 - Admin
 - User Config
 - Save & Reboot
 - Image Upgrade
 - Alarm
 - Diagnostics
 - Remote Access

Done Internet

DSL-302G Configuration Manager GUI - Microsoft Internet Explorer

File Edit View Favorites Tools Help

Back Search Favorites Media Norton AntiVirus

D-Link

Building Networks For People

- D-Link
 - Quick Configuration
 - System View
 - LAN
 - LAN Config
 - DHCP Mode
 - WAN
 - DSL Status
 - DSL Mode
 - PPP
 - EOA
 - IPOA
 - NAT
 - Bridging
 - Bridging
 - ATM VCC
 - Admin
 - User Config
 - Save & Reboot
 - Image Upgrade
 - Alarm
 - Diagnostics
 - Remote Access

Diagnostics

This page is used for performing diagnostics on the system.

ATM VC:

Testing Connectivity to modem		
Testing Ethernet connection	UNKNOWN	Help
Testing ADSL line for sync	UNKNOWN	Help
Testing Ethernet connection to ATM	UNKNOWN	Help
Testing Telco Connectivity		
Testing ATM OAM segment ping	UNKNOWN	Help
Testing ATM OAM end to end ping	UNKNOWN	Help

Copyright © 2002 D-Link, Inc. All rights reserved.

Done Internet

DSL-302G Configuration Manager GUI - Microsoft Internet Explorer

File Edit View Favorites Tools Help

Back Search Favorites Media Norton AntiVirus

D-Link

Building Networks For People

Remote Access Configuration

Use this page to configure Remote Access.

Remote Administrator Access Enable Disable

Copyright © 2002 D-Link, Inc. All rights reserved.

- D-Link
 - Quick Configuration
 - System View
 - LAN
 - LAN Config
 - DHCP Mode
 - WAN
 - DSL Status
 - DSL Mode
 - PPP
 - EOA
 - IPOA
 - NAT
 - Bridging
 - Bridging
 - ATM VCC
 - Admin
 - User Config
 - Save & Reboot
 - Image Upgrade
 - Alarm
 - Diagnostics
 - Remote Access

Done Internet