

DSL-502T
Click and Connect (v.1.01)

D-Link Click'n Connect

ADSL 2/2+ COMPLIANT

DSL-502T

(ADSL 2/2+ USB/Ethernet Modem/Router)



User Manual
Quick Install Guide
Install Acrobat Reader
Technical Support

Copyright 2006
D-Link Australia Pty Ltd

start installation

v1.01
D-Link
Building Networks for People

Click'n Connect - Easy Install Wizard

D-Link Click'n Connect

ADSL 2/2+ COMPLIANT

DSL-502T

(ADSL 2/2+ USB/Ethernet Modem/Router)



Plug the power lead in to the device's power jack, and the other end in to a power socket.



Please ensure the status LED on the front of the unit is blinking before clicking the NEXT button.

1. Install Device
2. Internet Settings
3. Internet Connection

> Power up the device

D-Link
Building Networks for People

EXIT <BACK NEXT>

Click'n Connect - Easy Install Wizard

D-Link Click'n Connect

ADSL 2/2+ COMPLIANT

DSL-502T

(ADSL 2/2+ USB/Ethernet Modem/Router)

Please select the connection type that you are using below, and then click **NEXT** to continue.

Connection Type:

- Ethernet
- USB

1. Install Device

2. Internet Settings

3. Internet Connection

> Select your connection type

D-Link
Building Networks for People

EXIT <BACK NEXT>

Click'n Connect - Easy Install Wizard

D-Link Click'n Connect

ADSL 2/2+ COMPLIANT

DSL-502T

(ADSL 2/2+ USB/Ethernet Modem/Router)



Connect the Ethernet cable from any one of the device's LAN ports (numbered 1 to 4) to your computer's Ethernet port.



Please ensure the Link LED(s) (1 to 4) on the front of the unit is lit and correspond to the LAN port at the rear before clicking the **NEXT** button.

1. Install Device

2. Internet Settings

3. Internet Connection

> Connect the device to the computer

D-Link
Building Networks for People

Local Area Connection is now connected X

Speed: 100.0 Mbps

EXIT > Wizard

D-Link Click'n Connect

ADSL 2/2+ COMPLIANT

DSL-502T

(ADSL 2/2+ USB/Ethernet Modem/Router)



1. Install Device
2. Internet Settings
3. Internet Connection

> Connect the device to the ADSL line

Connect the microfilter/splitter (optional on some models) to the telephone jack. Connect the device's Line port to the microfilter/splitter DSL jack.

Please ensure the ADSL LED is lit before clicking the NEXT button.

D-Link
Building Networks for People

EXIT <BACK NEXT>

Click'n Connect - Easy Install Wizard

D-Link Click'n Connect

ADSL 2/2+ COMPLIANT

DSL-502T


(ADSL 2/2+ USB/Ethernet Modem/Router)

1. Install Device
2. Internet Settings
3. Internet Connection

We are now checking the physical connectivity status of your device.

Please prepare the connection information (provided by your ISP) for Internet setup.

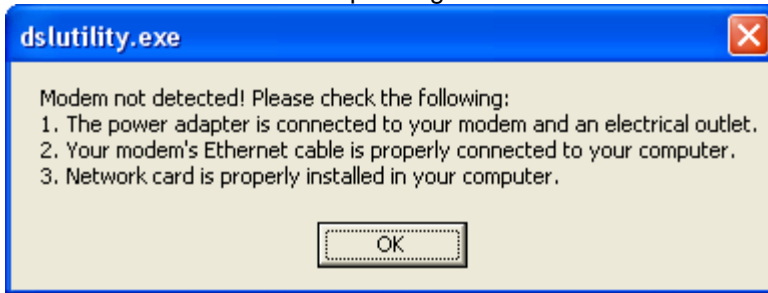
> Check device connectivity



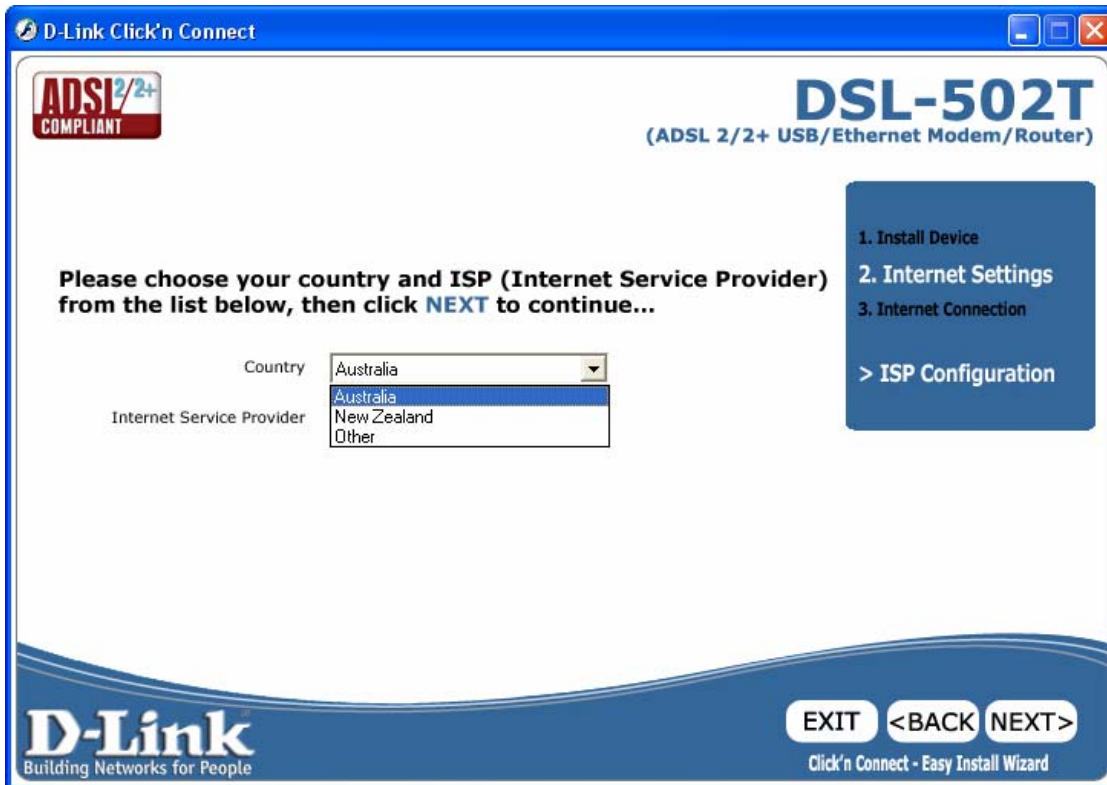
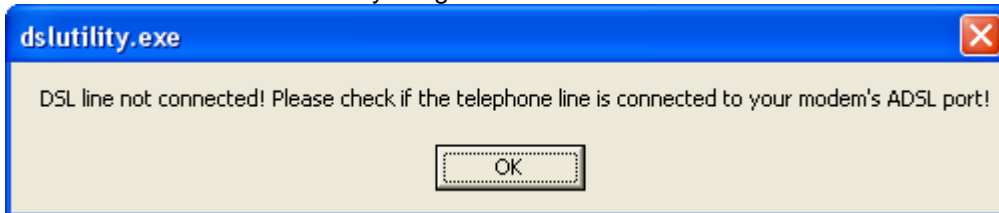
D-Link
Building Networks for People

Click'n Connect - Easy Install Wizard

Router not connected/not responding:



ADSL line not connected/ not syncing:



D-Link Click'n Connect

ADSL 2/2+ COMPLIANT

DSL-502T

(ADSL 2/2+ USB/Ethernet Modem/Router)

Please choose your country and ISP (Internet Service Provider) from the list below, then click **NEXT to continue...**

Country: Australia

Internet Service Provider: AAPT, AAPT, Dodo Internet, Internode, inet, iPrimus, Netspace, Optus, OzEmail

1. Install Device
2. Internet Settings
3. Internet Connection
> ISP Configuration

D-Link
Building Networks for People

EXIT <BACK NEXT>

Click'n Connect - Easy Install Wizard

D-Link Click'n Connect

ADSL 2/2+ COMPLIANT

DSL-502T

(ADSL 2/2+ USB/Ethernet Modem/Router)

Please choose your country and ISP (Internet Service Provider) from the list below, then click **NEXT to continue...**

Country: Australia

Internet Service Provider: Internode, Netspace, Optus, OzEmail, Pacific Internet, TelPacific, Telstra BigPond, TPG, Other

1. Install Device
2. Internet Settings
3. Internet Connection
> ISP Configuration

D-Link
Building Networks for People

EXIT <BACK NEXT>

Click'n Connect - Easy Install Wizard

E.g. Internode:

D-Link Click'n Connect

ADSL 2/2+ COMPLIANT

DSL-502T
(ADSL 2/2+ USB/Ethernet Modem/Router)

Please enter your account information (provided by your ISP) below, and then click **NEXT** to continue...

Username
Provided by your ISP

Password
Provided by your ISP

Confirm Password
Re-enter the Password

1. Install Device
2. Internet Settings
3. Internet Connection
> Account config

D-Link
Building Networks for People

EXIT <BACK NEXT>
Click'n Connect - Easy Install Wizard

Other:

D-Link Click'n Connect

ADSL 2/2+ COMPLIANT

DSL-502T
(ADSL 2/2+ USB/Ethernet Modem/Router)

Please choose your country and ISP (Internet Service Provider) from the list below, then click **NEXT** to continue...

Country

Internet Service Provider

Protocol

Encapsulation

VPI

VCI

MTU

1. Install Device
2. Internet Settings
3. Internet Connection
> ISP Configuration

D-Link
Building Networks for People

EXIT <BACK NEXT>
Click'n Connect - Easy Install Wizard

D-Link Click'n Connect

ADSL 2/2+ COMPLIANT

DSL-502T

(ADSL 2/2+ USB/Ethernet Modem/Router)

Please choose your country and ISP (Internet Service Provider) from the list below, then click **NEXT to continue...**

Country: Australia

Internet Service Provider: Other

Protocol: PPPoE

Encapsulation: PPPoA

VPI: Dynamic IP

VCI: 35

MTU: 1400

1. Install Device
2. Internet Settings
3. Internet Connection

> ISP Configuration

D-Link
Building Networks for People

EXIT <BACK NEXT>

Click'n Connect - Easy Install Wizard

D-Link Click'n Connect

ADSL 2/2+ COMPLIANT

DSL-502T

(ADSL 2/2+ USB/Ethernet Modem/Router)

Please choose your country and ISP (Internet Service Provider) from the list below, then click **NEXT to continue...**

Country: Australia

Internet Service Provider: Other

Protocol: PPPoA

Encapsulation: LLC

VPI: VC Mux

VCI: 35

MTU: 1400

1. Install Device
2. Internet Settings
3. Internet Connection

> ISP Configuration

D-Link
Building Networks for People

EXIT <BACK NEXT>

Click'n Connect - Easy Install Wizard

D-Link Click'n Connect

ADSL 2/2+ COMPLIANT

DSL-502T
(ADSL 2/2+ USB/Ethernet Modem/Router)

The settings are now being saved to your device. During this time diagnostics will be performed and checks will be done on your connection to the Internet.

(if successful your unit will connect to the Internet, this process may take upto 2 minutes to complete)

1. Install Device
2. Internet Settings
3. Internet Connection
> Completing setup

[32%]

D-Link
Building Networks for People

Local Area Connection is now connected
Speed: 100.0 Mbps

Incorrect username or password:

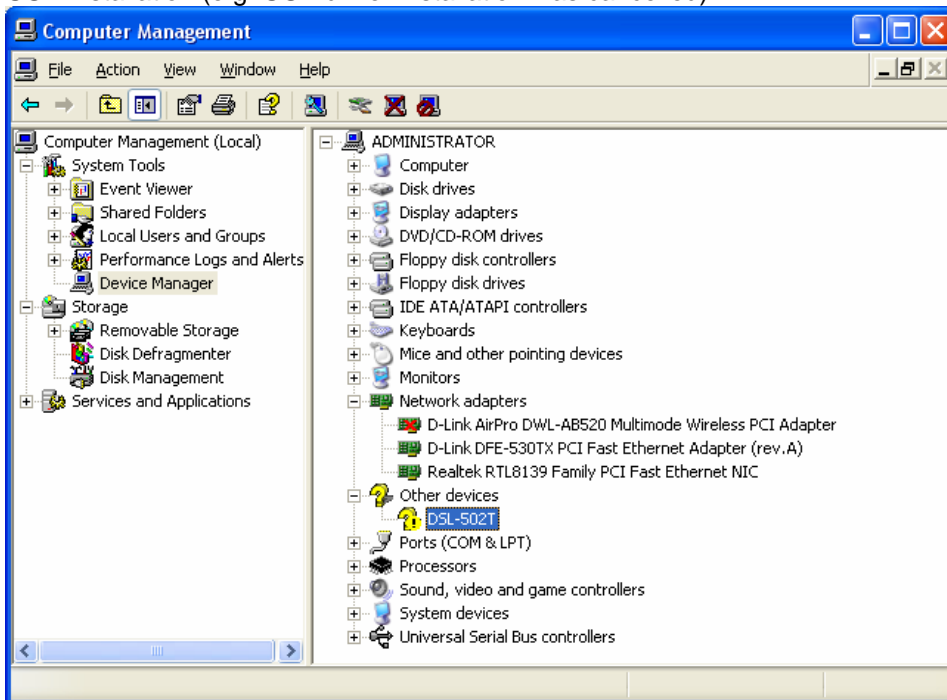
dslutility.exe

PPP connection fail! Please confirm the PPP username and password or contact your Internet Service Provider.

OK



USB installation (e.g. USB driver installation was cancelled):



D-Link Click'n Connect

ADSL 2/2+ COMPLIANT

DSL-502T

(ADSL 2/2+ USB/Ethernet Modem/Router)

Please select the connection type that you are using below, and then click **NEXT** to continue.

1. Install Device
2. Internet Settings
3. Internet Connection

> Select your connection type

Connection Type:

D-Link
Building Networks for People

EXIT <BACK NEXT>

Click'n Connect - Easy Install Wizard

D-Link Click'n Connect

ADSL 2/2+ COMPLIANT

DSL-502T

(ADSL 2/2+ USB/Ethernet Modem/Router)

Please select the connection type that you are using below, and then click **NEXT** to continue.

1. Install Device
2. Internet Settings
3. Internet Connection

> Select your connection type

Connection Type:

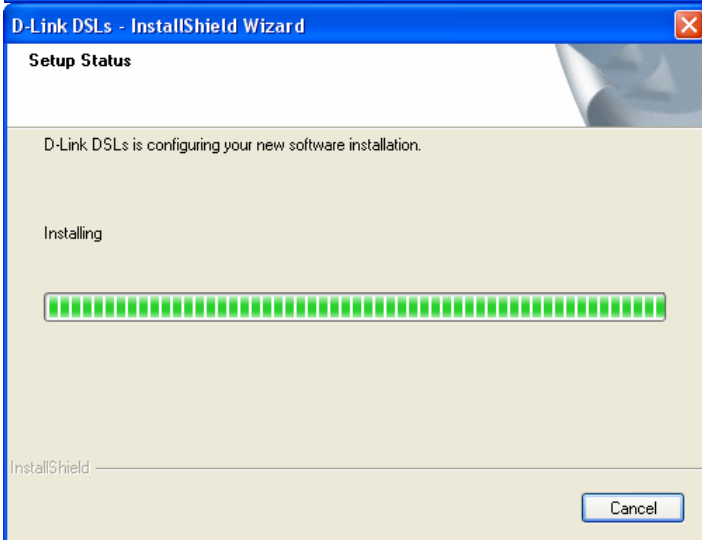
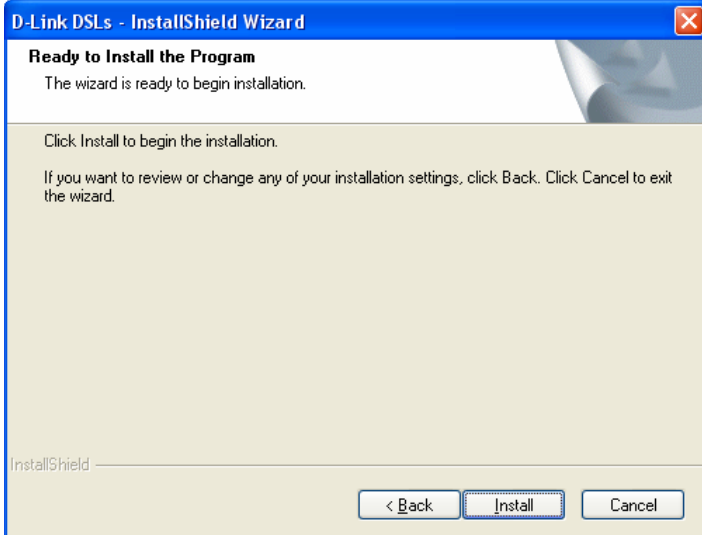
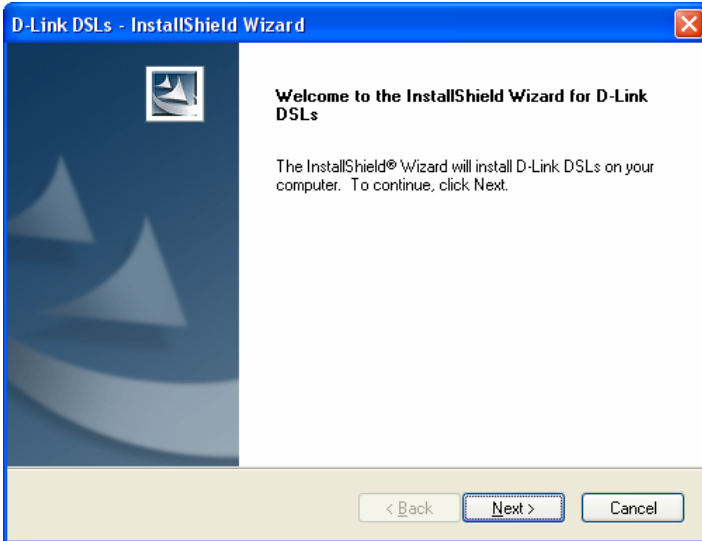
If you have not yet installed the USB Driver, please click the "Install USB Drivers" button below to start the Installation of the Drivers onto your system.

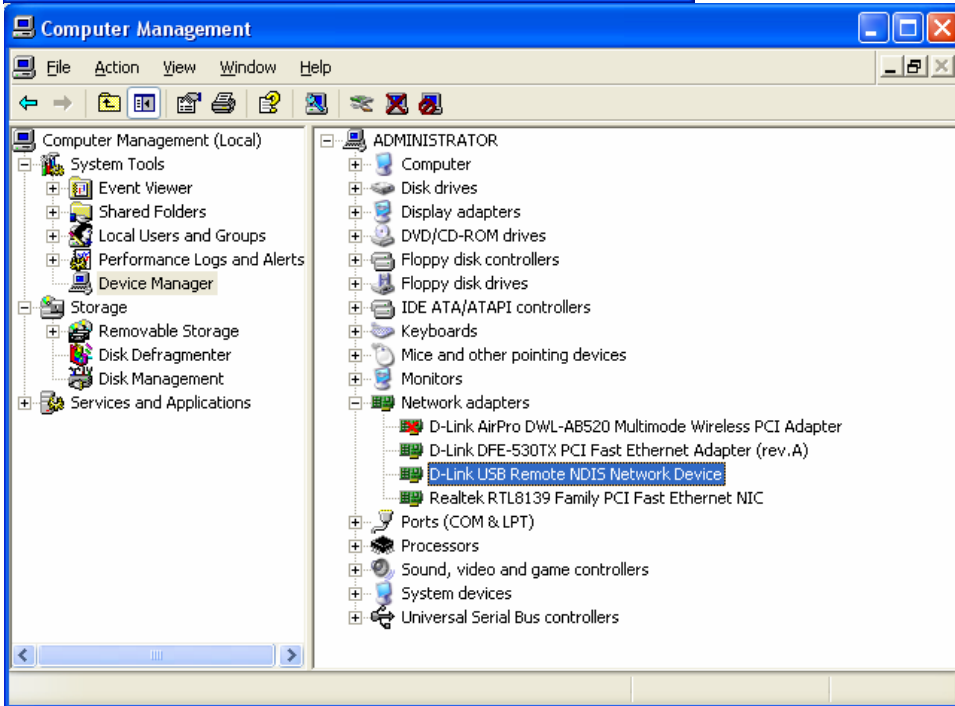
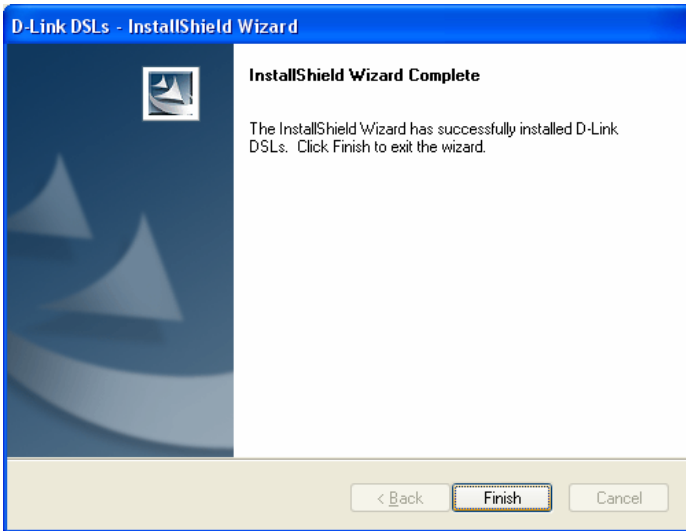
Install USB Drivers

D-Link
Building Networks for People

EXIT <BACK NEXT>

Click'n Connect - Easy Install Wizard





D-Link Click'n Connect

ADSL 2/2+ COMPLIANT

DSL-502T

(ADSL 2/2+ USB/Ethernet Modem/Router)




1. Install Device
2. Internet Settings
3. Internet Connection

> Connect the device to the computer

Connect the USB cable from the device's USB port to your computer's USB port.

Please ensure the **USB LED** on the front of the unit is lit before clicking the **NEXT** button.

D-Link
Building Networks for People

EXIT <BACK NEXT>

Click'n Connect - Easy Install Wizard

D-Link Click'n Connect

ADSL 2/2+ COMPLIANT

DSL-502T

(ADSL 2/2+ USB/Ethernet Modem/Router)




1. Install Device
2. Internet Settings
3. Internet Connection

> Connect the device to the ADSL line

Connect the microfilter/splitter (optional on some models) to the telephone jack. Connect the device's Line port to the microfilter/splitter DSL jack.

Please ensure the **ADSL LED** is lit before clicking the **NEXT** button.

D-Link
Building Networks for People

EXIT <BACK NEXT>

Click'n Connect - Easy Install Wizard

Other steps are the same as when using Ethernet.