

D-Link DSL-500 - Steven Sia Internet Explorer

File Edit View Favorites Tools Help

Address http://192.168.0.1/html/Hmain.html

D-Link DSL Router **DSL-500**

D-Link DSL-500

- PPPoE Configuration
- Ethernet IP Address
- DHCP Configuration
- NAT Configuration
- Port Redirection
- Advanced Filter/Firewall
- Connection Type
- OAM Loopback Test
- Line Condition
- User Name and Password
- Save Changes
- Update Firmware
- Remote Management over Wan
- Summary

PPPoE Configuration

PPPoE Login

Login User Name
 Login Password
 Authentication
 Connect On Demand
 Idle Time minutes

PPP Information

IP Address 0.0.0.0
 Connection Status PPPoE server not found

PVC

VPI
 VCI

D-Link DSL-500 - Steven Sia Internet Explorer

File Edit View Favorites Tools Help

Address http://192.168.0.1/html/Hmain.html

D-Link DSL Router **DSL-500**

D-Link DSL-500

- PPPoE Configuration
- Ethernet IP Address
- DHCP Configuration
- NAT Configuration
- Port Redirection
- Advanced Filter/Firewall
- Connection Type

PVC

VPI
 VCI

D-Link DSL-500 - Steven Sia Internet Explorer

File Edit View Favorites Tools Help

Address <http://192.168.0.1/html/Hmain.html> Links >> Go

D-Link DSL Router **DSL-500**

Ethernet IP Address

IP Address . . .
 Subnet Mask . . .

OK

D-Link DSL-500

- PPPoE Configuration
- Ethernet IP Address
- DHCP Configuration
- NAT Configuration
- Port Redirection
- Advanced Filter/Firewall
- Connection Type
- OAM Loopback Test

D-Link DSL-500 - Steven Sia Internet Explorer

File Edit View Favorites Tools Help

Address <http://192.168.0.1/html/Hmain.html> Links >> Go

D-Link DSL Router **DSL-500**

Dynamic IP Assignment

Start IP Address . . .
 End IP Address . . .
 Netmask . . .
 Default Gateway . . .
 Leased Time sec
 DNS Server IP . . .
 Domain Name
 State

OK

D-Link DSL-500

- PPPoE Configuration
- Ethernet IP Address
- DHCP Configuration
- NAT Configuration
- Port Redirection
- Advanced Filter/Firewall
- Connection Type
- OAM Loopback Test
- Line Condition
- User Name and Password
- Save Changes
- Update Firmware
- Remote Management over Wan
- Summary

D-Link DSL-500 - Steven Sia Internet Explorer

File Edit View Favorites Tools Help

Address <http://192.168.0.1/html/Hmain.html> Links >> Go

D-Link DSL Router **DSL-500**

- D-Link DSL-500
 - PPPoE Configuration
 - Ethernet IP Address
 - DHCP Configuration
 - NAT Configuration**
 - Port Redirection
 - Advanced Filter/Firewall
 - Connection Type
 - OAM Loopback Test
 - Line Condition
 - User Name and Password
 - Save Changes

NAT Configuration

DMZ IP Address . . .

NAT Function

OK

D-Link DSL-500 - Steven Sia Internet Explorer

File Edit View Favorites Tools Help

Address <http://192.168.0.1/html/Hmain.html> Links >> Go

D-Link DSL Router **DSL-500**

- D-Link DSL-500
 - PPPoE Configuration
 - Ethernet IP Address
 - DHCP Configuration
 - NAT Configuration
 - Port Redirection**
 - Advanced Filter/Firewall
 - Connection Type
 - OAM Loopback Test
 - Line Condition
 - User Name and Password
 - Save Changes

Port Redirection

| Comment | Internet Port | Local Port | Protocol | Local Computer |
|---------|---------------|------------|----------|----------------|
| | | | | |

Add

D-Link DSL-500 - Steven Sia Internet Explorer

File Edit View Favorites Tools Help

Address <http://192.168.0.1/html/Hmain.html> Links >> Go

D-Link DSL Router **DSL-500**

D-Link DSL-500

- PPPoE Configuration
- Ethernet IP Address
- DHCP Configuration
- NAT Configuration
- Port Redirection
- Advanced Filter/Firewall
- Connection Type
- OAM Loopback Test
- Line Condition
- User Name and Password
- Save Changes
- Update Firmware
- Remote Management over Wan
- Summary

Redirect Port -- Add

Comment

Internet Port

Local Port

Protocol

Local Computer . . .

OK

D-Link DSL-500 - Steven Sia Internet Explorer

File Edit View Favorites Tools Help

Address <http://192.168.0.1/html/Hmain.html> Links >> Go

D-Link DSL Router **DSL-500**

D-Link DSL-500

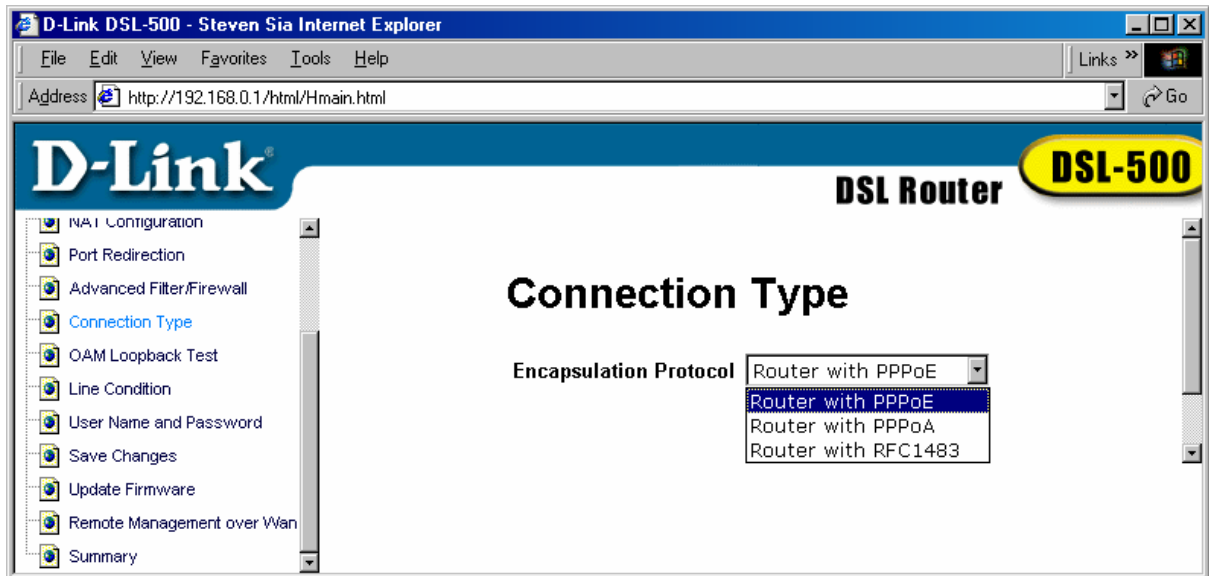
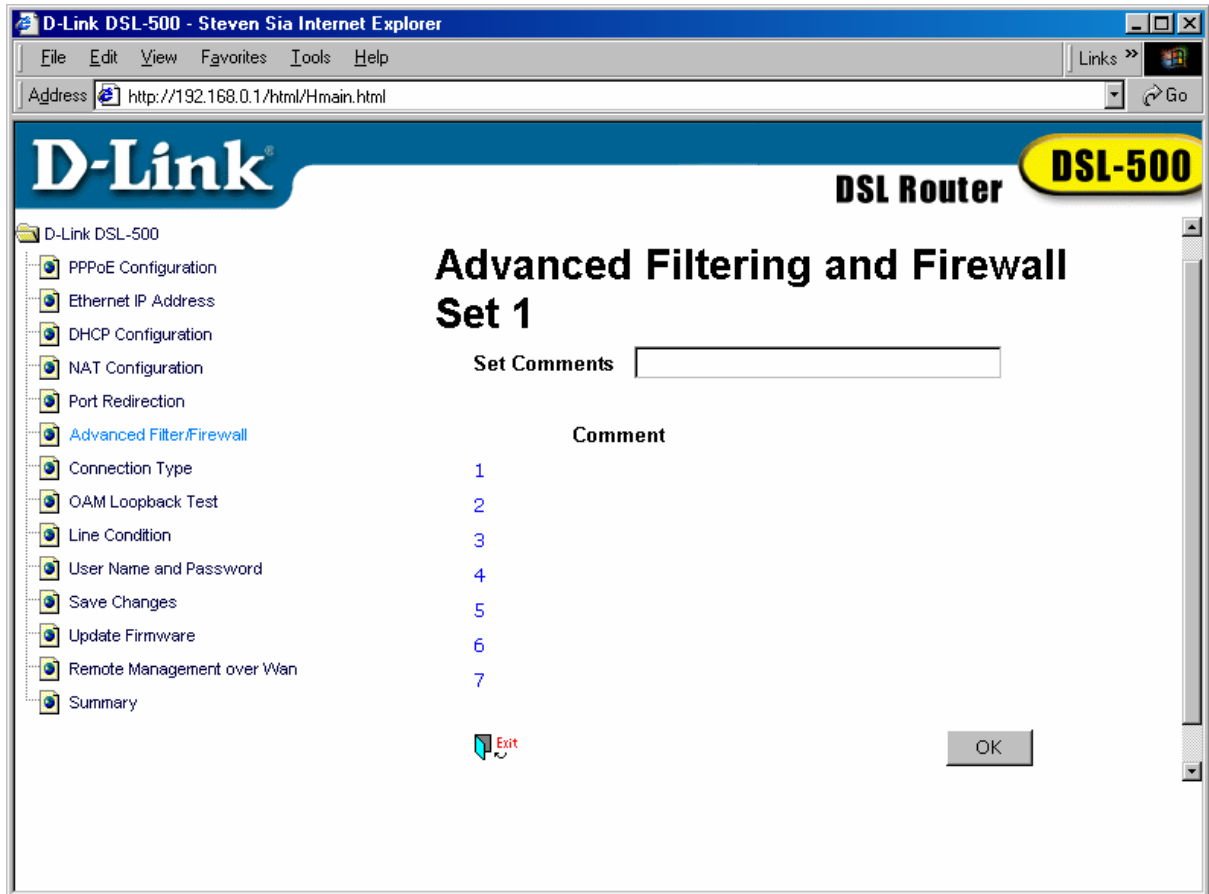
- PPPoE Configuration
- Ethernet IP Address
- DHCP Configuration
- NAT Configuration
- Port Redirection
- Advanced Filter/Firewall
- Connection Type
- OAM Loopback Test
- Line Condition
- User Name and Password
- Save Changes
- Update Firmware
- Remote Management over Wan
- Summary

Advanced Filtering and Firewall

| Set # | Comment |
|-------|---------|
| 1 | |
| 2 | |
| 3 | |
| 4 | |
| 5 | |
| 6 | |
| 7 | |
| 8 | |
| 9 | |
| 10 | |
| 11 | |
| 12 | |

IP Filter

OK



D-Link DSL-500 - Steven Sia Internet Explorer

File Edit View Favorites Tools Help

Address http://192.168.0.1/html/Hmain.html

D-Link DSL Router **DSL-500**

D-Link DSL-500

- PPPoE Configuration
- Ethernet IP Address
- DHCP Configuration
- NAT Configuration
- Port Redirection
- Advanced Filter/Firewall
- Connection Type
- OAM Loopback Test
- Line Condition
- User Name and Password
- Save Changes
- Update Firmware
- Remote Management over Wan
- Summary

OAM Loopback Test

VPI

VCI

F4/F5

etoe/segment

Status

D-Link DSL-500 - Steven Sia Internet Explorer

File Edit View Favorites Tools Help

Address http://192.168.0.1/html/Hmain.html

D-Link DSL Router **DSL-500**

D-Link DSL-500

- PPPoE Configuration
- Ethernet IP Address
- DHCP Configuration
- NAT Configuration
- Port Redirection
- Advanced Filter/Firewall
- Connection Type
- OAM Loopback Test
- Line Condition
- User Name and Password
- Save Changes
- Update Firmware
- Remote Management over Wan
- Summary

Line Condition

| | |
|-----------------|--------|
| Data Path | Fast |
| Operation Mode | T1.413 |
| Rate | |
| Downstream | 0 |
| Upstream | 0 |
| Near end | |
| FEC | 0 |
| CRC | 0 |
| HEC | 0 |
| Far end | |
| FEC | 0 |

D-Link DSL-500 - Steven Sia Internet Explorer

File Edit View Favorites Tools Help

Address <http://192.168.0.1/html/Hmain.html> Links >> Go

D-Link® DSL Router DSL-500

- D-Link DSL-500
 - PPPoE Configuration
 - Ethernet IP Address
 - DHCP Configuration
 - NAT Configuration
 - Port Redirection
 - Advanced Filter/Firewall
 - Connection Type
 - OAM Loopback Test
 - Line Condition
 - User Name and Password
 - Save Changes
 - Update Firmware
 - Remote Management over Wan
 - Summary

| | |
|-----------------|---|
| Near end | |
| FEC | 0 |
| CRC | 0 |
| HEC | 0 |
| Far end | |
| FEC | 0 |
| CRC | 0 |
| HEC | 0 |

Refresh

D-Link DSL-500 - Steven Sia Internet Explorer

File Edit View Favorites Tools Help

Address <http://192.168.0.1/html/Hmain.html> Links >> Go

D-Link® DSL Router DSL-500

- D-Link DSL-500
 - PPPoE Configuration
 - Ethernet IP Address
 - DHCP Configuration
 - NAT Configuration
 - Port Redirection
 - Advanced Filter/Firewall
 - Connection Type
 - OAM Loopback Test
 - Line Condition
 - User Name and Password
 - Save Changes
 - Update Firmware

Username and Password

User Name

Old Password

New Password

Confirm New Password

OK

D-Link DSL-500 - Steven Sia Internet Explorer

File Edit View Favorites Tools Help

Address <http://192.168.0.1/html/Hmain.html> Links >> Go

D-Link DSL Router **DSL-500**

- D-Link DSL-500
 - PPPoE Configuration
 - Ethernet IP Address
 - DHCP Configuration
 - NAT Configuration
 - Port Redirection
 - Advanced Filter/Firewall
 - Connection Type
 - OAM Loopback Test
 - Line Condition
 - User Name and Password
 - Save Changes**
 - Update Firmware
 - Remote Management over Wan
 - Summary

Save Changes

Warning!!

It takes about a minute to save configuration to memory.

DON'T TURN OFF DEVICE'S POWER AND WAIT FOR NEXT PAGE.

Save Configuration

D-Link DSL-500 - Steven Sia Internet Explorer

File Edit View Favorites Tools Help

Address <http://192.168.0.1/html/Hmain.html> Links >> Go

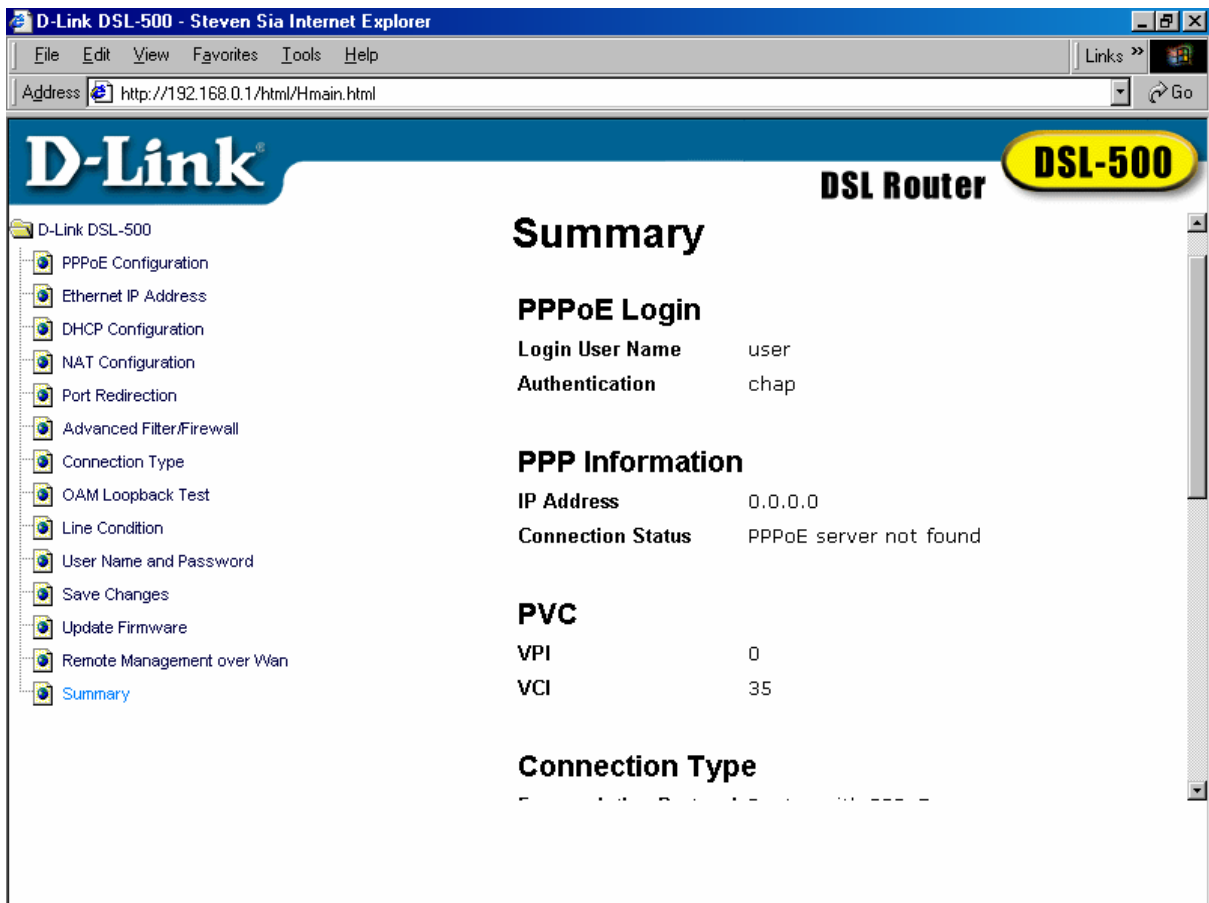
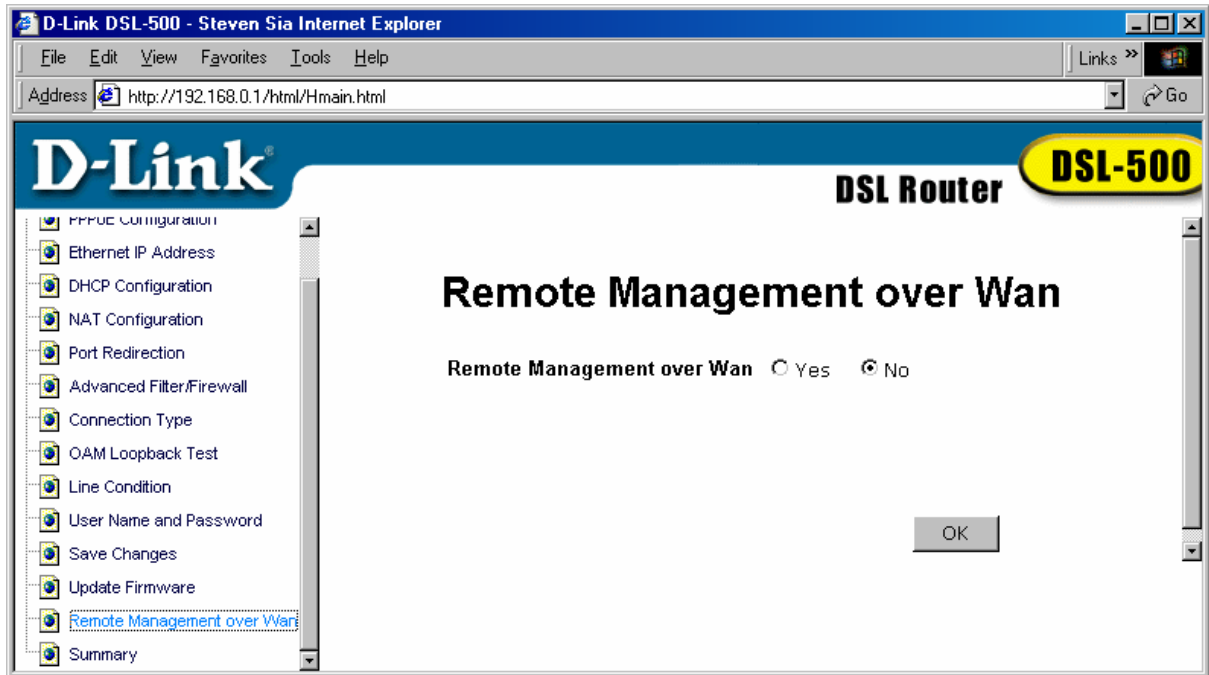
D-Link DSL Router **DSL-500**

- D-Link DSL-500
 - PPPoE Configuration
 - Ethernet IP Address
 - DHCP Configuration
 - NAT Configuration
 - Port Redirection
 - Advanced Filter/Firewall
 - Connection Type
 - OAM Loopback Test
 - Line Condition
 - User Name and Password
 - Save Changes
 - Update Firmware**
 - Remote Management over Wan
 - Summary

Update Firmware

Current Firmware Version R1.14AU

Go to www.dlink.com to check for newer firmware versions



D-Link DSL-500 - Steven Sia Internet Explorer

File Edit View Favorites Tools Help

Address http://192.168.0.1/html/Hmain.html

D-Link

DSL Router **DSL-500**

- D-Link DSL-500
 - PPPoE Configuration
 - Ethernet IP Address
 - DHCP Configuration
 - NAT Configuration
 - Port Redirection
 - Advanced Filter/Firewall
 - Connection Type
 - OAM Loopback Test
 - Line Condition
 - User Name and Password
 - Save Changes
 - Update Firmware
 - Remote Management over Wan
 - Summary

Connection Type

Encapsulation Protocol Router with PPPoE

DHCP Configuration

| | |
|------------------|---------------|
| Start IP Address | 192.168.0.2 |
| End IP Address | 192.168.0.254 |
| Netmask | 255.255.255.0 |
| Default Gateway | 192.168.0.1 |
| Leased Time | 8640000 sec |
| DNS Server IP | 0.0.0.0 |
| Domain Name | |
| State | enabled |

NAT Configuration

| | |
|--------------|---------|
| NAT Function | enabled |
|--------------|---------|