

D-Link DSL-500 - Microsoft Internet Explorer

File Edit View Favorites Tools Help

D-Link
Building Networks for People

D-Link DSL-500

- Configuration
 - Router/Bridge Configuration
 - Connection Profile
 - Ethernet IP Address
 - Layer 2 Filtering
 - Proxy DNS
 - DHCP Configuration on LAN
 - NAT Configuration
 - IP Masquerade Pass Through
 - IP Masquerade Timer
 - NAT ALGs
 - Port Redirection
 - Static Route Configuration
 - Advanced Filtering & Firewall
 - RIP
 - Date / Time
 - UPnP Configuration
- Maintenance
- Summary

Connection Profile

Profile Name	VPI	VCI	Connection Type	
1 AU_PPPOE	8	35	Router with PPPOE	Delete
2 AU_PPPOA	8	35	Router with PPPOA	Delete
3 NZ_PPPOA	0	100	Router with PPPOA	Delete
4 AU_RouterR1483	8	35	undefined	Delete
5 AU_IPoA	8	35	Router with IPoA	Delete
6 AU_Bridge	8	35	Bridge with RFC 1483	Delete
7 ISP1	1	32	Router with IPoA	Delete
8	0	0		

Internet

D-Link DSL-500 - Microsoft Internet Explorer

File Edit View Favorites Tools Help

D-Link
Building Networks for People

D-Link DSL-500

- Configuration
 - Router/Bridge Configuration
 - Connection Profile
 - Ethernet IP Address
 - Layer 2 Filtering
 - Proxy DNS
 - DHCP Configuration on LAN
 - NAT Configuration
 - IP Masquerade Pass Through
 - IP Masquerade Timer
 - NAT ALGs
 - Port Redirection
 - Static Route Configuration
 - Advanced Filtering & Firewall
 - RIP
 - Date / Time
 - UPnP Configuration
- Maintenance
- Summary

Ethernet IP Address

MAC Address 00:50:ba:92:e8:43

IP Address . . .

Subnet Mask ▼

OK

Done

Internet

D-Link DSL-500 - Microsoft Internet Explorer

File Edit View Favorites Tools Help

D-Link
Building Networks for People

D-Link DSL-500

- Configuration
 - Router/Bridge Configuration
 - Connection Profile
 - Ethernet IP Address
 - Layer 2 Filtering
 - Proxy DNS
 - DHCP Configuration on LAN
 - NAT Configuration
 - IP Masquerade Pass Through
 - IP Masquerade Timer
 - NAT ALGs
 - Port Redirection
 - Static Route Configuration
 - Advanced Filtering & Firewall
 - RIP
 - Date / Time
 - UPnP Configuration
- Maintenance
- Summary

Layer 2 Filtering

- ARP
- PPPoE
- IP Multicast
- IPv6 Multicast
- IP Broadcast
- RARP
- IPX
- NetBEUI
- Appletalk
- IEEE 802.1Q packet
- Bridge Management Information

means pass such frame type.

OK

Done Internet

D-Link DSL-500 - Microsoft Internet Explorer

File Edit View Favorites Tools Help

D-Link
Building Networks for People

D-Link DSL-500

- Configuration
 - Router/Bridge Configuration
 - Connection Profile
 - Ethernet IP Address
 - Layer 2 Filtering
 - Proxy DNS
 - DHCP Configuration on LAN
 - NAT Configuration
 - IP Masquerade Pass Through
 - IP Masquerade Timer
 - NAT ALGs
 - Port Redirection
 - Static Route Configuration
 - Advanced Filtering & Firewall
 - RIP
 - Date / Time
 - UPnP Configuration
- Maintenance
- Summary

Proxy DNS

Proxy DNS

Get DNS IP automatically

DNS Server IP . . .

OK

Internet

D-Link DSL-500 - Microsoft Internet Explorer

File Edit View Favorites Tools Help

D-Link
Building Networks for People

D-Link DSL-500

- Configuration
 - Router/Bridge Configuration
 - Connection Profile
 - Ethernet IP Address
 - Layer 2 Filtering
 - Proxy DNS
 - DHCP Configuration on LAN
 - NAT Configuration
 - IP Masquerade Pass Through
 - IP Masquerade Timer
 - NAT ALGs
 - Port Redirection
 - Static Route Configuration
 - Advanced Filtering & Firewall
 - RIP
 - Date / Time
 - UPnP Configuration
- Maintenance
- Summary

DHCP Configuration on LAN

Start IP Address 192 . 168 . 0 . 2

End IP Address 192 . 168 . 0 . 33

Netmask 255.255.255.0 (/24)

Default Gateway 192 . 168 . 0 . 1

Leased Time 72 hour

Primary DNS 192 . 168 . 0 . 1

Secondary DNS 0 . 0 . 0 . 0

Primary WINS 0 . 0 . 0 . 0

Secondary WINS 0 . 0 . 0 . 0

Domain Name

State enabled

OK

Done Internet

D-Link DSL-500 - Microsoft Internet Explorer

File Edit View Favorites Tools Help

D-Link
Building Networks for People

D-Link DSL-500

- Configuration
 - Router/Bridge Configuration
 - Connection Profile
 - Ethernet IP Address
 - Layer 2 Filtering
 - Proxy DNS
 - DHCP Configuration on LAN
 - NAT Configuration
 - IP Masquerade Pass Through
 - IP Masquerade Timer
 - NAT ALGs
 - Port Redirection
 - Static Route Configuration
 - Advanced Filtering & Firewall
 - RIP
 - Date / Time
 - UPnP Configuration
- Maintenance
- Summary

NAT Configuration

NAT Function enabled

DMZ State disabled

DMZ IP Address 0 . 0 . 0 . 0

OK

Done Internet

D-Link DSL-500 - Microsoft Internet Explorer

File Edit View Favorites Tools Help

D-Link
Building Networks for People

D-Link DSL-500

- Configuration
 - Router/Bridge Configuration
 - Connection Profile
 - Ethernet IP Address
 - Layer 2 Filtering
 - Proxy DNS
 - DHCP Configuration on LAN
 - NAT Configuration
 - IP Masquerade Pass Through**
 - IP Masquerade Timer
 - NAT ALGs
 - Port Redirection
 - Static Route Configuration
 - Advanced Filtering & Firewall
 - RIP
 - Date / Time
 - UPnP Configuration
- Maintenance
- Summary

IP Masquerade Pass Through

IPsec
 PPTP

OK

Done Internet

D-Link DSL-500 - Microsoft Internet Explorer

File Edit View Favorites Tools Help

D-Link
Building Networks for People

D-Link DSL-500

- Configuration
 - Router/Bridge Configuration
 - Connection Profile
 - Ethernet IP Address
 - Layer 2 Filtering
 - Proxy DNS
 - DHCP Configuration on LAN
 - NAT Configuration
 - IP Masquerade Pass Through
 - IP Masquerade Timer**
 - NAT ALGs
 - Port Redirection
 - Static Route Configuration
 - Advanced Filtering & Firewall
 - RIP
 - Date / Time
 - UPnP Configuration
- Maintenance
- Summary

IP Masquerade Timer

TCP 2 hours
UDP 1 minute

OK

Done Internet

D-Link DSL-500 - Microsoft Internet Explorer

File Edit View Favorites Tools Help

D-Link
Building Networks for People

D-Link DSL-500

- Configuration
 - Router/Bridge Configuration
 - Connection Profile
 - Ethernet IP Address
 - Layer 2 Filtering
 - Proxy DNS
 - DHCP Configuration on LAN
 - NAT Configuration
 - IP Masquerade Pass Through
 - IP Masquerade Timer
 - NAT ALGs
 - Port Redirection
 - Static Route Configuration
 - Advanced Filtering & Firewall
 - RIP
 - Date / Time
 - UPnP Configuration
- Maintenance
- Summary

NAT ALGs

H.323
 IPsec
 PPTP
 ICQ (audio)
 SIP (video/audio/white board/remote control)

OK

Done Internet

D-Link DSL-500 - Microsoft Internet Explorer

File Edit View Favorites Tools Help

D-Link
Building Networks for People

D-Link DSL-500

- Configuration
 - Router/Bridge Configuration
 - Connection Profile
 - Ethernet IP Address
 - Layer 2 Filtering
 - Proxy DNS
 - DHCP Configuration on LAN
 - NAT Configuration
 - IP Masquerade Pass Through
 - IP Masquerade Timer
 - NAT ALGs
 - Port Redirection
 - Static Route Configuration
 - Advanced Filtering & Firewall
 - RIP
 - Date / Time
 - UPnP Configuration
- Maintenance
- Summary

Port Redirection

Port Redirection State:
 Existing Entry: 0
 Valid Entry: 0

Apply

The entries in gray color are mapped by UPnP.

	Internet	Local			
Index	State	Protocol	Start Port	End Port	Local IP Address

Select index to set: Modify Delete Clear

State:
 Protocol:
 Internet:
 Start Port:
 End Port:
 Local IP Address: . . .

Add

Done Internet

D-Link DSL-500 - Microsoft Internet Explorer

File Edit View Favorites Tools Help

D-Link
Building Networks for People

D-Link DSL-500

- Configuration
 - Router/Bridge Configuration
 - Connection Profile
 - Ethernet IP Address
 - Layer 2 Filtering
 - Proxy DNS
 - DHCP Configuration on LAN
 - NAT Configuration
 - IP Masquerade Pass Through
 - IP Masquerade Timer
 - NAT ALGs
 - Port Redirection
 - Static Route Configuration
 - Advanced Filtering & Firewall
 - RIP
 - Date / Time
 - UPnP Configuration
- Maintenance
- Summary

Static Route Configuration

Existing Entry 0
Valid Entry 0

Index	State	Item Name	IP Address/Subnet Mask	Gateway	Interface	Metric
-------	-------	-----------	------------------------	---------	-----------	--------

Select index to set: Not selected

Item Name:

State: enabled

IP Address: 0 . 0 . 0 . 0

Subnet Mask: 255.255.255.255 (/32)

Gateway: 0 . 0 . 0 . 0

Interface: LAN

Metric: 0

Done Internet

D-Link DSL-500 - Microsoft Internet Explorer

File Edit View Favorites Tools Help

D-Link
Building Networks for People

D-Link DSL-500

- Configuration
 - Router/Bridge Configuration
 - Connection Profile
 - Ethernet IP Address
 - Layer 2 Filtering
 - Proxy DNS
 - DHCP Configuration on LAN
 - NAT Configuration
 - IP Masquerade Pass Through
 - IP Masquerade Timer
 - NAT ALGs
 - Port Redirection
 - Static Route Configuration
 - Advanced Filtering & Firewall
 - RIP
 - Date / Time
 - UPnP Configuration
- Maintenance
- Summary

Advanced Filtering & Firewall

Existing Entry 0 IP Filter State: disabled
Valid Entry 0 If not matched: Pass

Index	State	Item Name	Pass or Block	Direction	Protocol	Source			Destination		
						IP Address/ Subnet Mask	Start Port	End Port	IP Address/ Subnet Mask	Start Port	End Port

Select index to set: Not selected

Item Name:

State: enabled

Pass or Block: Pass

Direction: In

Protocol: ICMP

Source

IP Address: 0 . 0 . 0 . 0

Subnet Mask: 255.255.255.255 (/32)

=

Start Port: 0

End Port: 0

Destination

IP Address: 0 . 0 . 0 . 0

Subnet Mask: 255.255.255.255 (/32)

=

Start Port: 0

End Port: 0

Select index to add/move: New

(Insert the entry before the selected index)

Done Internet

D-Link DSL-500 - Microsoft Internet Explorer

File Edit View Favorites Tools Help

D-Link
Building Networks for People

D-Link DSL-500

- Configuration
 - Router/Bridge Configuration
 - Connection Profile
 - Ethernet IP Address
 - Layer 2 Filtering
 - Proxy DNS
 - DHCP Configuration on LAN
 - NAT Configuration
 - IP Masquerade Pass Through
 - IP Masquerade Timer
 - NAT ALGs
 - Port Redirection
 - Static Route Configuration
 - Advanced Filtering & Firewall
 - RIP
 - Date / Time
 - UPnP Configuration
- Maintenance
- Summary

RIP

	Version	RIP
LAN	<input type="radio"/> RIPv1 <input type="radio"/> RIPv2	<input type="radio"/> On <input checked="" type="radio"/> Off
WAN	<input type="radio"/> RIPv1 <input type="radio"/> RIPv2	<input type="radio"/> On <input checked="" type="radio"/> Off

OK

Done Internet

D-Link DSL-500 - Microsoft Internet Explorer

File Edit View Favorites Tools Help

D-Link
Building Networks for People

D-Link DSL-500

- Configuration
 - Router/Bridge Configuration
 - Connection Profile
 - Ethernet IP Address
 - Layer 2 Filtering
 - Proxy DNS
 - DHCP Configuration on LAN
 - NAT Configuration
 - IP Masquerade Pass Through
 - IP Masquerade Timer
 - NAT ALGs
 - Port Redirection
 - Static Route Configuration
 - Advanced Filtering & Firewall
 - RIP
 - Date / Time
 - UPnP Configuration
- Maintenance
- Summary

Date / Time

NTP State: Set device time with local PC time

NTP Server IP: 210 . 59 . 157 . 40

Timezone: GMT+08:00

System time of the modem

Date: 01 / 01 / 1970

Time: 00 : 42 : 48

OK

Done Internet

D-Link DSL-500 - Microsoft Internet Explorer

File Edit View Favorites Tools Help

D-Link
Building Networks for People

D-Link DSL-500

- Configuration
 - Router/Bridge Configuration
 - Connection Profile
 - Ethernet IP Address
 - Layer 2 Filtering
 - Proxy DNS
 - DHCP Configuration on LAN
 - NAT Configuration
 - IP Masquerade Pass Through
 - IP Masquerade Timer
 - NAT ALGs
 - Port Redirection
 - Static Route Configuration
 - Advanced Filtering & Firewall
 - RIP
 - Date / Time
 - UPnP Configuration
- Maintenance
- Summary

UPnP Configuration

UPnP

OK

Done Internet

D-Link DSL-500 - Microsoft Internet Explorer

File Edit View Favorites Tools Help

D-Link
Building Networks for People

D-Link DSL-500

- Configuration
- Maintenance
 - ATM Loopback Test
 - System Username and Password
 - Save Changes
 - Factory Reset
 - Update Firmware
 - Configuration Maintenance
 - Remote Administration Access
 - ADSL Line Setting
- Summary

ATM Loopback Test

VPI

VCI

F4/F5

etoe/segment

Status

Loop Test

Internet

D-Link DSL-500 - Microsoft Internet Explorer

File Edit View Favorites Tools Help

D-Link
Building Networks for People

D-Link DSL-500

- Configuration
- Maintenance
 - ATM Loopback Test
 - System Username and Password**
 - Save Changes
 - Factory Reset
 - Update Firmware
 - Configuration Maintenance
 - Remote Administration Access
 - ADSL Line Setting
- Summary

System Username and Password

User Name

Old Password

New Password

Confirm New Password

OK

Done Internet

D-Link DSL-500 - Microsoft Internet Explorer

File Edit View Favorites Tools Help

D-Link
Building Networks for People

D-Link DSL-500

- Configuration
- Maintenance
 - ATM Loopback Test
 - System Username and Password
 - Save Changes
 - Factory Reset
 - Update Firmware**
 - Configuration Maintenance
 - Remote Administration Access
 - ADSL Line Setting
- Summary

Update Firmware

Current Firmware Version R2.21.002.03.b2t12au

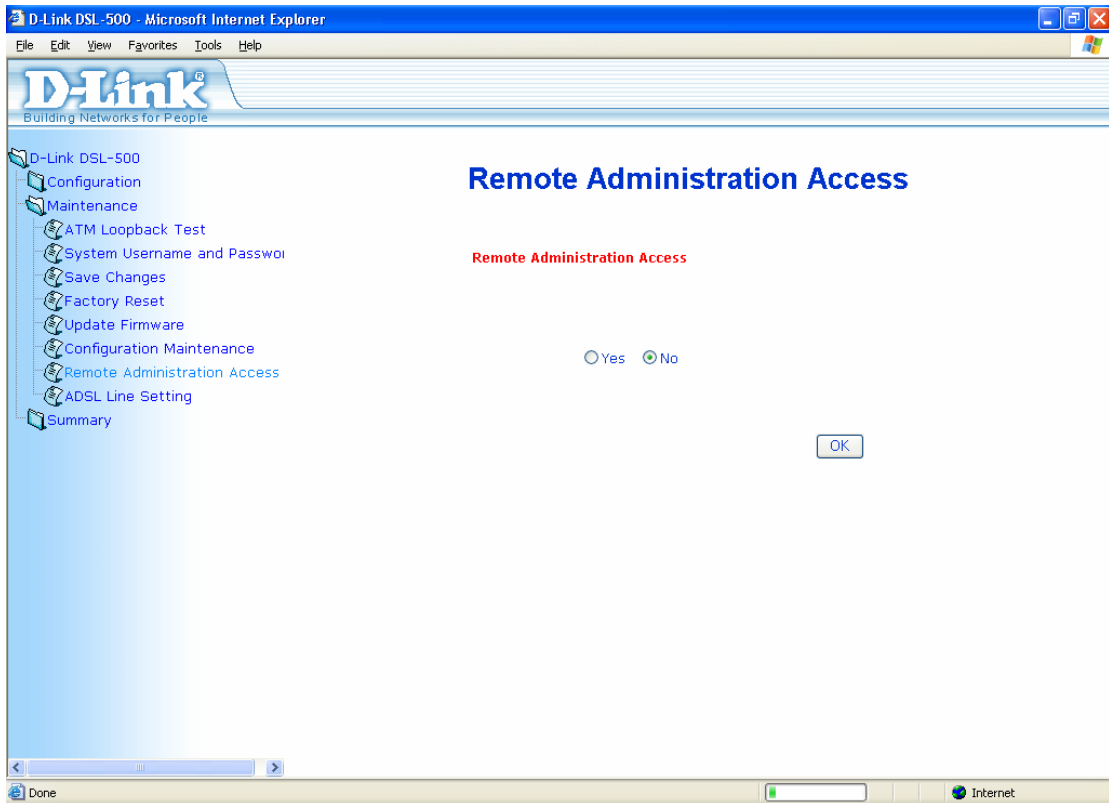
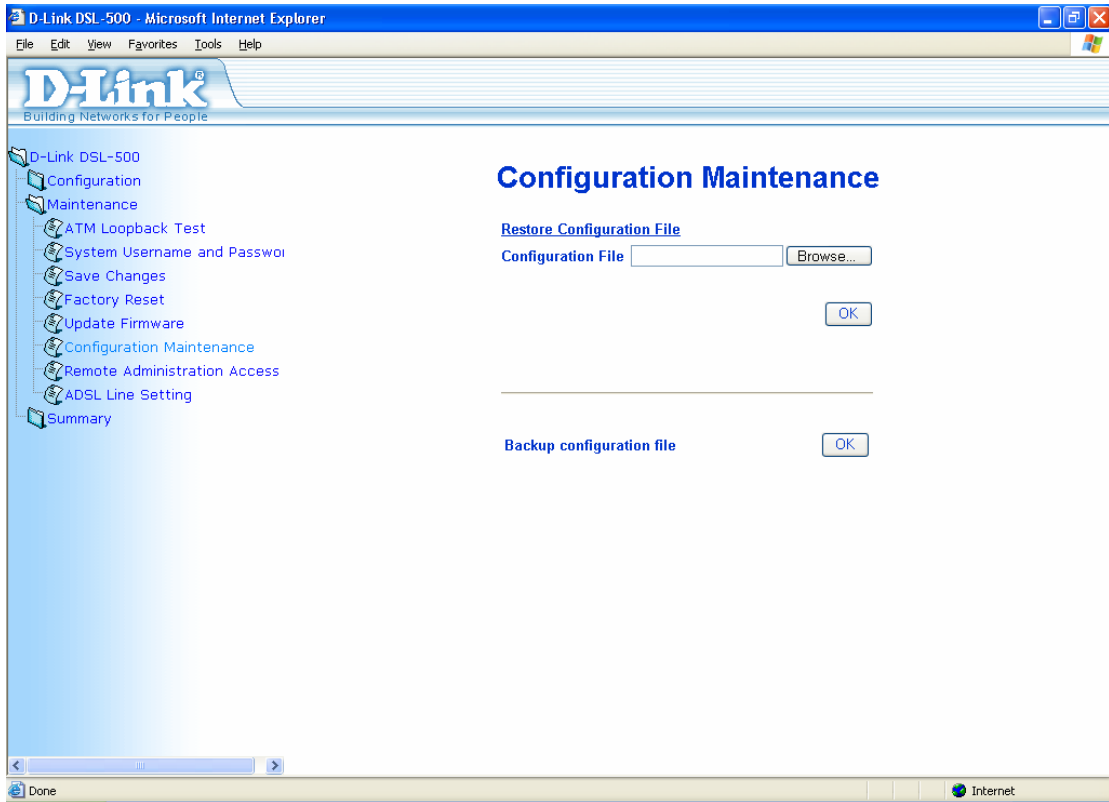
ADSL driver Version 1.3.5.03182002.0001

Update Firmware

Firmware

OK

Internet



D-Link DSL-500 - Microsoft Internet Explorer

File Edit View Favorites Tools Help

D-Link
Building Networks for People

D-Link DSL-500

- Configuration
- Maintenance
 - ATM Loopback Test
 - System Username and Password
 - Save Changes
 - Factory Reset
 - Update Firmware
 - Configuration Maintenance
 - Remote Administration Access
 - ADSL Line Setting
- Summary

ADSL Line Setting

Connect Status:

Done Internet

D-Link DSL-500 - Microsoft Internet Explorer

File Edit View Favorites Tools Help

D-Link
Building Networks for People

D-Link DSL-500

- Configuration
- Maintenance
- Summary
- Summary
- DHCP Allocation Table
- Port Redirection Summary
- Runtime Routing Table
- Advanced Filtering & Firewall S
- Line Condition
- Carrier Chart

Summary

IP Address Configuration	IP Address	192.168.0.1
	Subnet Mask	255.255.255.0
	MAC Address	00:50:ba:92:e8:43
PPPoE Login	Login User Name	user
	Authentication	chap
PPP Information	IP Address	0.0.0.0
	Connection Status	Physical line error
PVC	VPI	8
	VCI	35
Connection Type	Mode	Router with PPPoE
	Encapsulation Method	LLC
Proxy DNS		enabled
	Get DNS IP automatically	enabled
	DNS Server IP	0.0.0.0
DHCP Configuration		enabled
UPnP State		enabled
NAT Configuration		enabled
DMZ State		disabled
IP Filter State		disabled
Date / Time		disabled
Event Log		enabled
Remote Administration Access		disabled

Done Internet

D-Link DSL-500 - Microsoft Internet Explorer

File Edit View Favorites Tools Help

D-Link
Building Networks for People

- D-Link DSL-500
 - Configuration
 - Maintenance
 - Summary
 - Summary
 - DHCP Allocation Table
 - Port Redirection Summary
 - Runtime Routing Table
 - Advanced Filtering & Firewall S
 - Line Condition
 - Carrier Chart

DHCP Allocation Table

Index	MAC Address	IP Address	Computer Name	Leased Time
1	00:50:ba:75:b5:e5	192.168.0.9	RMA_TOSHY	71

Internet

D-Link DSL-500 - Microsoft Internet Explorer

File Edit View Favorites Tools Help

D-Link
Building Networks for People

- D-Link DSL-500
 - Configuration
 - Maintenance
 - Summary
 - Summary
 - DHCP Allocation Table
 - Port Redirection Summary
 - Runtime Routing Table
 - Advanced Filtering & Firewall S
 - Line Condition
 - Carrier Chart

Port Redirection Summary

The entries in gray color are mapped by UPnP.

Index	Protocol	Internet		Local
		Start Port	End Port	Local IP Address
1	TCP	80	80	192.168.0.1

Internet

Done

D-Link DSL-500 - Microsoft Internet Explorer

File Edit View Favorites Tools Help

D-Link
Building Networks for People

- D-Link DSL-500
 - Configuration
 - Maintenance
 - Summary
 - Summary
 - DHCP Allocation Table
 - Port Redirection Summary
 - Runtime Routing Table
 - Advanced Filtering & Firewall S
 - Line Condition
 - Carrier Chart

Runtime Routing Table

Index	Item Name	Subnet	Gateway	Interface	Metric
1	ethernet	192.168.0.0/24	0.0.0.0	LAN	1
2	ppp_route	0.0.0.0/0	0.0.0.0	WAN	1

Done Internet

D-Link DSL-500 - Microsoft Internet Explorer

File Edit View Favorites Tools Help

D-Link
Building Networks for People

- D-Link DSL-500
 - Configuration
 - Maintenance
 - Summary
 - Summary
 - DHCP Allocation Table
 - Port Redirection Summary
 - Runtime Routing Table
 - Advanced Filtering & Firewall S
 - Line Condition
 - Carrier Chart

Advanced Filtering & Firewall Summary

Index	Item Name	Pass or Block	Direction	Protocol	Source			Destination		
					IP Address/ Subnet Mask	Start Port	End Port	IP Address/ Subnet Mask	Start Port	End Port

Done Internet

D-Link DSL-500 - Microsoft Internet Explorer

File Edit View Favorites Tools Help

D-Link
Building Networks for People

- D-Link DSL-500
 - Configuration
 - Maintenance
 - Summary
 - Summary
 - DHCP Allocation Table
 - Port Redirection Summary
 - Runtime Routing Table
 - Advanced Filtering & Firewall S
 - Line Condition
 - Carrier Chart

Line Condition

Auto Refresh

Protocol	ADSL State	Idle
	Data Path	Fast
	Operation Mode	

		Downstream	Upstream
Line Status	ADSL Link Speed	0 kbps	0 kbps
	SNR	0.0 dB	-
	ATEN	0 dB	0 dB
Line Error	ADSL layer	FEC	0
		CRC	0
	ATM layer	HEC	0
Frame Counter		0	0

Loop Distance: About 0 K ft.

Clear

Done Internet

D-Link DSL-500 - Microsoft Internet Explorer

File Edit View Favorites Tools Help

D-Link
Building Networks for People

- D-Link DSL-500
 - Configuration
 - Maintenance
 - Summary
 - Summary
 - DHCP Allocation Table
 - Port Redirection Summary
 - Runtime Routing Table
 - Advanced Filtering & Firewall S
 - Line Condition
 - Carrier Chart

Carrier Chart

Update

Data Rate (kbps)

Frequency (KH)

—Downstream

Applet: appCarrier0509 started Internet