

DSL-504T  
Click'n'Connect CD ver. 1.01

D-Link Click'n Connect

**ADSL 2/2+ COMPLIANT**

# DSL-504T

(ADSL 2/2+ 4-Port Ethernet Modem/Router)



User Manual  
Quick Install Guide  
Install Acrobat Reader  
Technical Support

Copyright 2006  
D-Link Australia Pty Ltd

**start installation**

v1.01  
**D-Link**  
Building Networks for People


Click'n Connect - Easy Install Wizard

D-Link Click'n Connect

**ADSL 2/2+ COMPLIANT**

# DSL-504T

(ADSL 2/2+ 4-Port Ethernet Modem/Router)



1. Install Device
2. Internet Settings
3. Internet Connection

> Power up the device

Plug the power lead in to the device's power jack, and the other end in to a power socket.

Please ensure the status LED on the front of the unit is blinking before clicking the NEXT button.

**D-Link**  
Building Networks for People

EXIT < BACK NEXT >

Local Area Connection is now connected  
Speed: 100.0 Mbps



# DSL-504T

(ADSL 2/2+ 4-Port Ethernet Modem/Router)



Connect the Ethernet cable from any one of the device's LAN ports (numbered 1 to 4) to your computer's Ethernet port.



Please ensure the Link LED(s) (1 to 4) on the front of the unit is lit and correspond to the LAN port at the rear before clicking the NEXT button.

- 1. Install Device
  - 2. Internet Settings
  - 3. Internet Connection
- > Connect the device to the computer

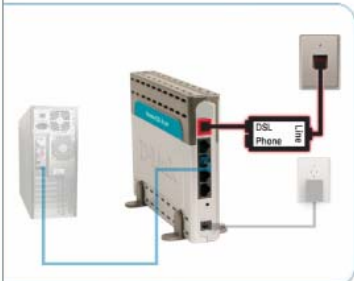


EXIT <BACK NEXT>  
Click'n Connect - Easy Install Wizard



# DSL-504T

(ADSL 2/2+ 4-Port Ethernet Modem/Router)



Connect the microfilter/splitter (optional on some models) to the telephone jack. Connect the device's Line port to the microfilter/splitter DSL jack.

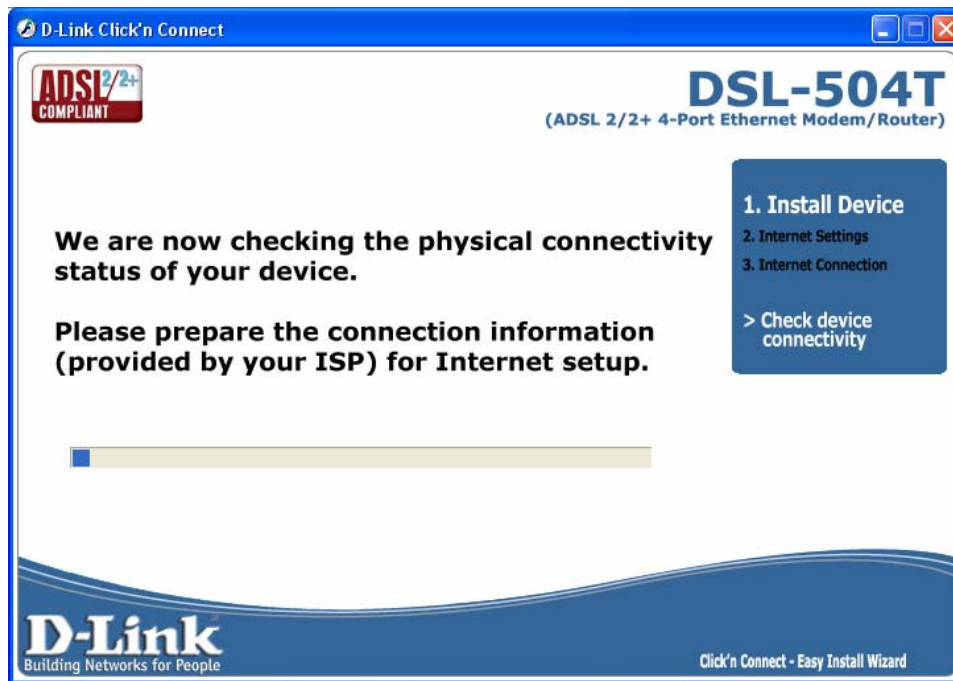


Please ensure the ADSL LED is lit before clicking the NEXT button.

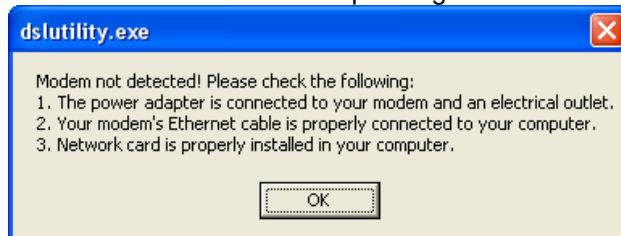
- 1. Install Device
  - 2. Internet Settings
  - 3. Internet Connection
- > Connect the device to the ADSL line



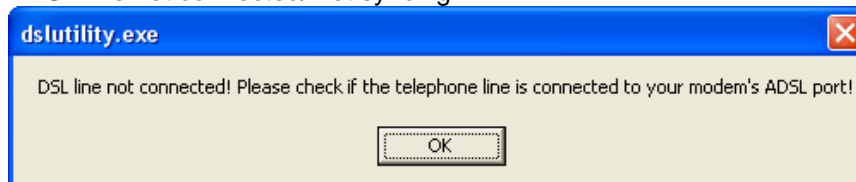
EXIT <BACK NEXT>  
Click'n Connect - Easy Install Wizard



Router not connected/not responding:



ADSL line not connected/ not syncing:



D-Link Click'n Connect

**ADSL 2/2+ COMPLIANT**

# DSL-504T

(ADSL 2/2+ 4-Port Ethernet Modem/Router)

**Please choose your country and ISP (Internet Service Provider) from the list below, then click **NEXT** to continue...**

Country:

Internet Service Provider:

- 1. Install Device
- 2. Internet Settings
- 3. Internet Connection

> ISP Configuration

**D-Link**  
Building Networks for People

EXIT <BACK NEXT>

Click'n Connect - Easy Install Wizard

D-Link Click'n Connect

**ADSL 2/2+ COMPLIANT**

# DSL-504T

(ADSL 2/2+ 4-Port Ethernet Modem/Router)

**Please choose your country and ISP (Internet Service Provider) from the list below, then click **NEXT** to continue...**

Country:

Internet Service Provider:

- 1. Install Device
- 2. Internet Settings
- 3. Internet Connection

> ISP Configuration

**D-Link**  
Building Networks for People

EXIT <BACK NEXT>

Click'n Connect - Easy Install Wizard

D-Link Click'n Connect

**ADSL 2/2+ COMPLIANT**

**DSL-504T**  
(ADSL 2/2+ 4-Port Ethernet Modem/Router)

**Please choose your country and ISP (Internet Service Provider) from the list below, then click NEXT to continue...**

Country: Australia

Internet Service Provider: AAPT

- Netspace
- Optus
- OzEmail
- Pacific Internet
- TelPacific
- Telstra BigPond
- TPG
- Other

1. Install Device  
2. Internet Settings  
3. Internet Connection

> ISP Configuration

**D-Link**  
Building Networks for People

EXIT <BACK NEXT>

Click'n Connect - Easy Install Wizard

D-Link Click'n Connect

**ADSL 2/2+ COMPLIANT**

**DSL-504T**  
(ADSL 2/2+ 4-Port Ethernet Modem/Router)

**Please choose your country and ISP (Internet Service Provider) from the list below, then click NEXT to continue...**

Country: Australia

Internet Service Provider: Other

Protocol: PPPoE

Encapsulation: PPPoE

- PPPoA
- Dynamic IP
- Static IP
- Bridge

VPI: \_\_\_\_\_

VCI: 35

MTU: 1400

1. Install Device  
2. Internet Settings  
3. Internet Connection

> ISP Configuration

**D-Link**  
Building Networks for People

EXIT <BACK NEXT>

Click'n Connect - Easy Install Wizard

D-Link Click'n Connect

**ADSL 2/2+ COMPLIANT**

# DSL-504T

(ADSL 2/2+ 4-Port Ethernet Modem/Router)

**Please choose your country and ISP (Internet Service Provider) from the list below, then click NEXT to continue...**

Country:

Internet Service Provider:

Protocol:

Encapsulation:

VPI:

VCI:

MTU:

1. Install Device  
2. Internet Settings  
3. Internet Connection

> ISP Configuration

**D-Link**  
Building Networks for People

EXIT <BACK NEXT>

Click'n Connect - Easy Install Wizard

D-Link Click'n Connect

**ADSL 2/2+ COMPLIANT**

# DSL-504T

(ADSL 2/2+ 4-Port Ethernet Modem/Router)

**Please enter your account information (provided by your ISP) below, and then click NEXT to continue...**

**Username**  
Provided by your ISP:

**Password**  
Provided by your ISP:

**Confirm Password**  
Re-enter the Password:

1. Install Device  
2. Internet Settings  
3. Internet Connection

> Account config

**D-Link**  
Building Networks for People

EXIT <BACK NEXT>

Click'n Connect - Easy Install Wizard

D-Link Click'n Connect

**ADSL 2/2+ COMPLIANT**

**DSL-504T**  
(ADSL 2/2+ 4-Port Ethernet Modem/Router)

**The settings are now being saved to your device. During this time diagnostics will be performed and checks will be done on your connection to the Internet.**  
(if successful your unit will connect to the Internet, this process may take upto 2 minutes to complete)

1. Install Device  
2. Internet Settings  
3. Internet Connection  
> Completing setup

[Progress Bar] (24%)

**D-Link**  
Building Networks for People

Click'n Connect - Easy Install Wizard

Incorrect username or password:

dslutility.exe

PPP connection fail! Please confirm the PPP username and password or contact your Internet Service Provider.

OK

D-Link Click'n Connect

**ADSL 2/2+ COMPLIANT**

**DSL-502T**  
(ADSL 2/2+ USB/Ethernet Modem/Router)

**CONGRATULATIONS!**

**You have now completed the installation process and you should now be able to access the Internet. Please click on the text below to exit and close the installation utility.**

1. Install Device  
2. Internet Settings  
3. Internet Connection  
> Setup complete

**=] FINISH [=**

**D-Link**  
Building Networks for People

Click'n Connect - Easy Install Wizard