



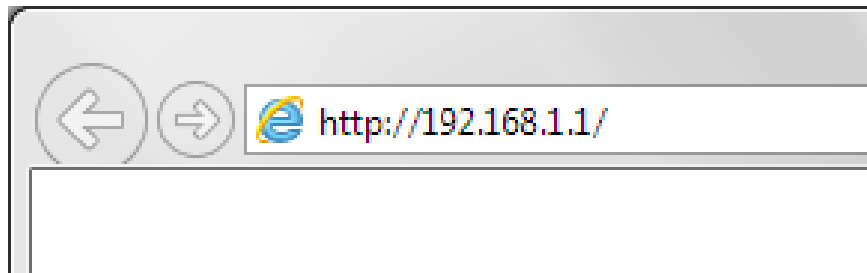
How to Configure Your Modem Router Using Setup Wizard

This document will detail how to configure your modem router for Internet and Wireless connection using the Setup Wizard accessible via a Web Browser.

Please note: running the Setup Wizard is only required when you are setting up your modem router for the first time. If you want to re-run the Setup Wizard it is recommended to reset the modem router to factory settings under Management > System > Restore.

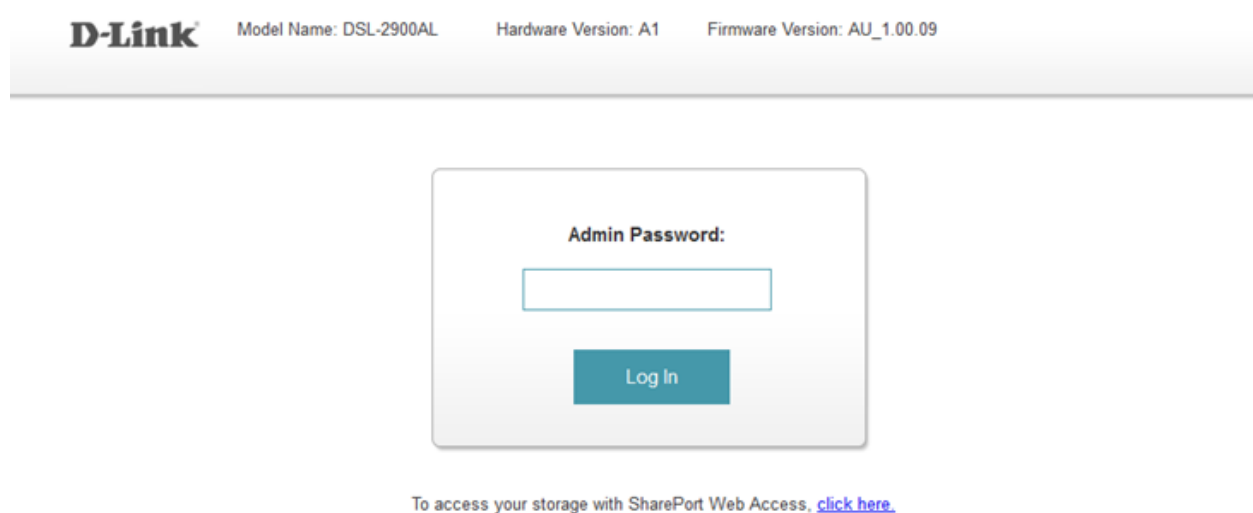
Step 1. Connect your ADSL line to the modem's DSL port. Connect your computer to one of the modem's LAN ports using a network cable. Alternatively you can connect via Wi-Fi (the Wi-Fi network name and the pre-set Wi-Fi password will be printed on the "D-Link Wi-Fi Configuration Card" and also on the router's serial label).

Open your Internet browser e.g. Internet Explorer, Firefox, Chrome, Safari, etc. and enter the IP address of your D-Link modem in the **address bar**: `http://192.168.1.1`



Step 2. When prompted type in the modem's password and then click on the "Log In" button. If you have not changed the password for the modem administration, the factory setting is:

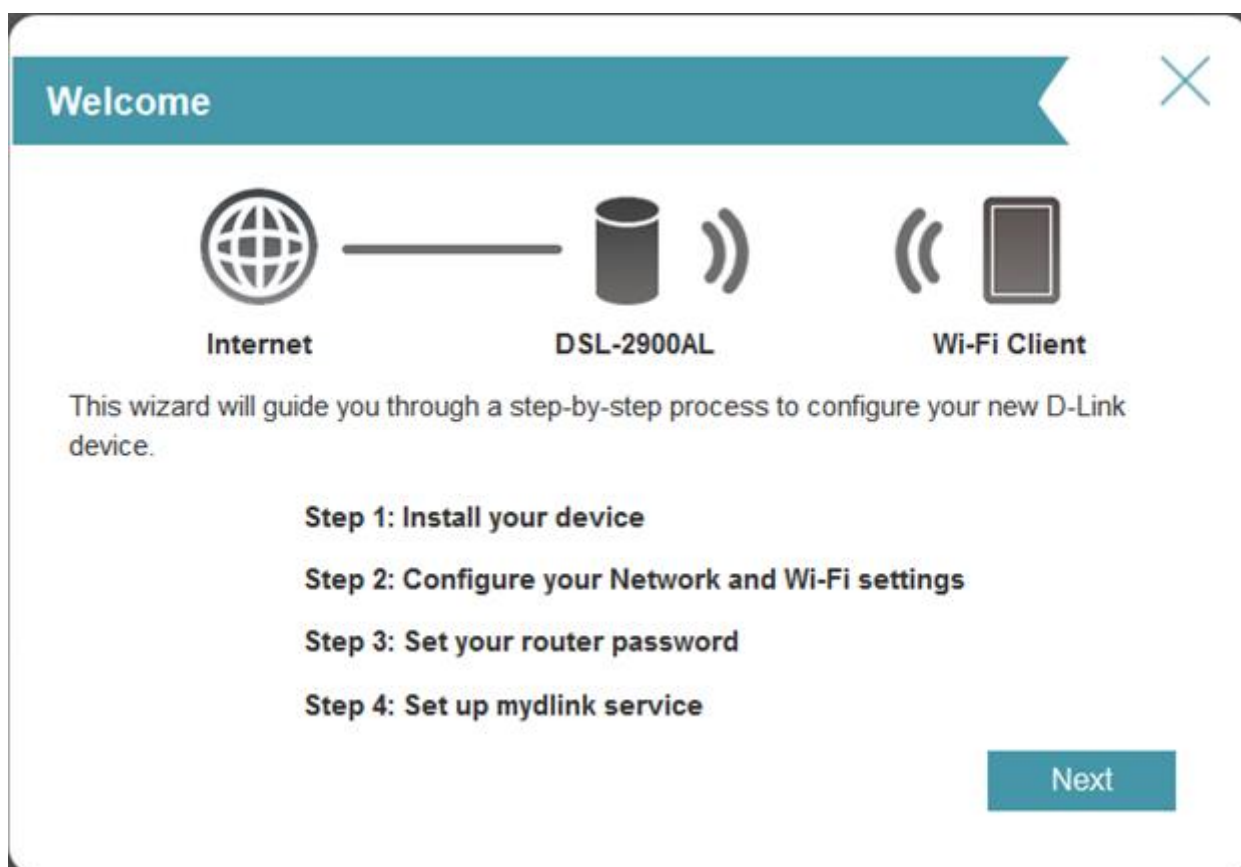
Password: admin



If you cannot recall the password you assigned to your modem you will need to reset the modem to factory defaults by pressing the reset button for 10 seconds. Please note that this will revert all the settings in the modem to factory settings and you will have to reconfigure it with your Internet settings and Wireless security. Make sure you have your Internet account details (given by your Internet Provider) handy.

Step 3. After logging in you will be presented with the modem's configuration pages. The Setup Wizard will start automatically. If not you can start it under Settings > Wizard.

The Setup Wizard will display the steps required to configure your modem router. Click on the Next button:



Step 4. The modem router will attempt to automatically detect the type of Internet connection you have.

In the Username and Password field please type in your Internet account details as given by your Internet Service Provider.

PPPoE

Internet DSL-2900AL Wi-Fi Client

To setup this Internet connection, you will need to have a User Name from your Internet Service Provider. If you do not have this information, please contact your ISP.

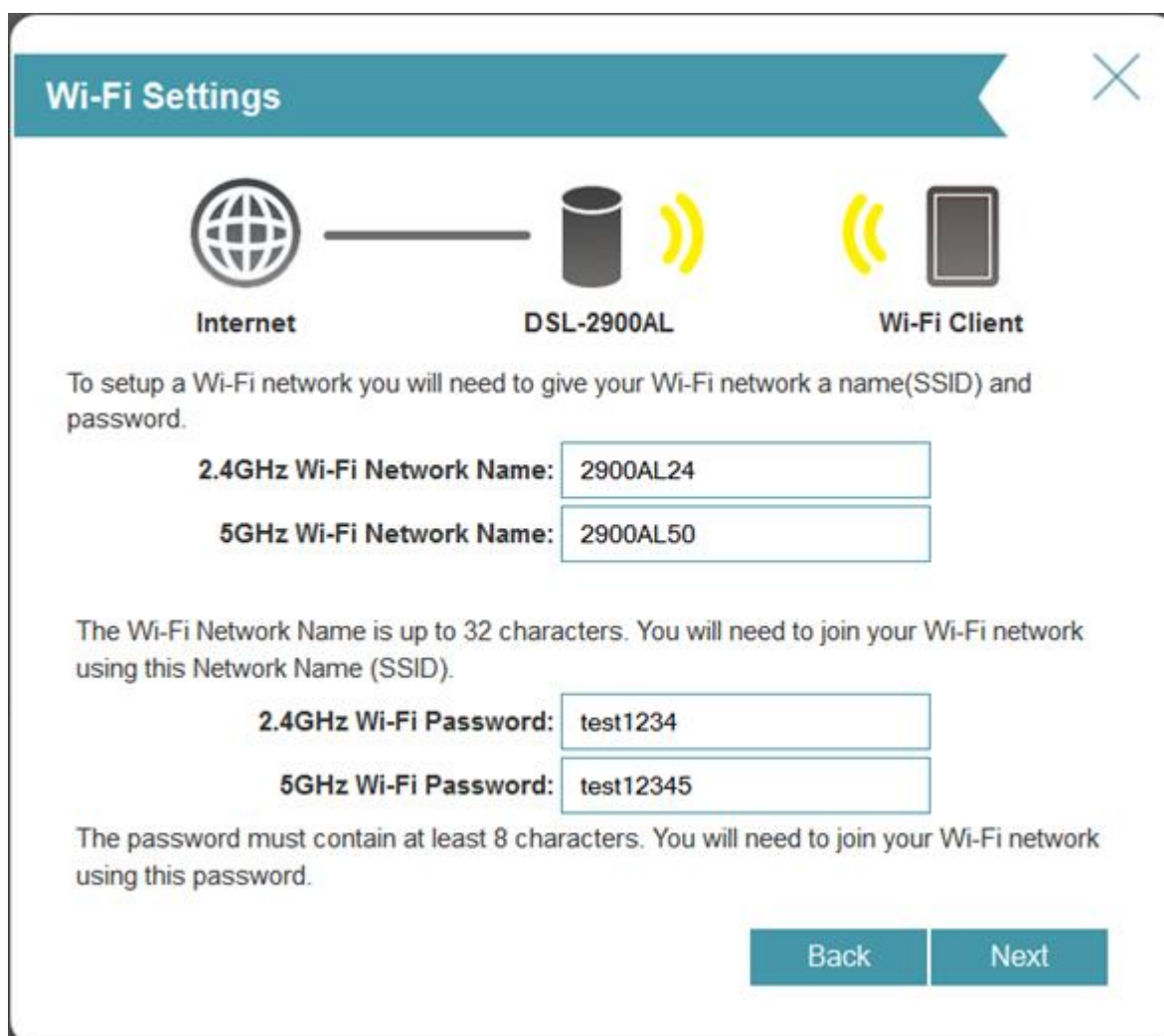
Username: myusername@provider.com.au

Password: mypassword

Back Next

Click on the Next button

Step 5. Now specify what Wi-Fi settings you want to use. Your router is a dual band router – it broadcasts two Wi-Fi networks (one on 2.4GHz and another on 5GHz band).
Type in the names that you want to use for your Wi-Fi networks.
Type in the passwords that you want to use to secure your Wi-Fi (the passwords should be at least 8 characters long).
Take a note of this password as you will need to enter it into all your devices trying to connect to your Wi-Fi network for the first time.



The image shows a 'Wi-Fi Settings' configuration window. At the top, there is a teal header with the title 'Wi-Fi Settings' and a close button (X). Below the header, a diagram illustrates the network flow: 'Internet' (globe icon) connects to 'DSL-2900AL' (cylinder icon), which then connects to 'Wi-Fi Client' (phone icon). Below the diagram, instructions state: 'To setup a Wi-Fi network you will need to give your Wi-Fi network a name (SSID) and password.' There are two input fields for network names: '2.4GHz Wi-Fi Network Name:' with the value '2900AL24' and '5GHz Wi-Fi Network Name:' with the value '2900AL50'. Below these, instructions state: 'The Wi-Fi Network Name is up to 32 characters. You will need to join your Wi-Fi network using this Network Name (SSID).' There are two input fields for passwords: '2.4GHz Wi-Fi Password:' with the value 'test1234' and '5GHz Wi-Fi Password:' with the value 'test12345'. Below these, instructions state: 'The password must contain at least 8 characters. You will need to join your Wi-Fi network using this password.' At the bottom right, there are two buttons: 'Back' and 'Next'.

Click on the Next button.

Step 6. To secure access to your modem router you can assign a new Device Admin password (default password is “admin”). Type in the new password and click on Next.

Take a note of this password as you will need to enter it every time you need to change any settings in your modem.

Device Admin Password

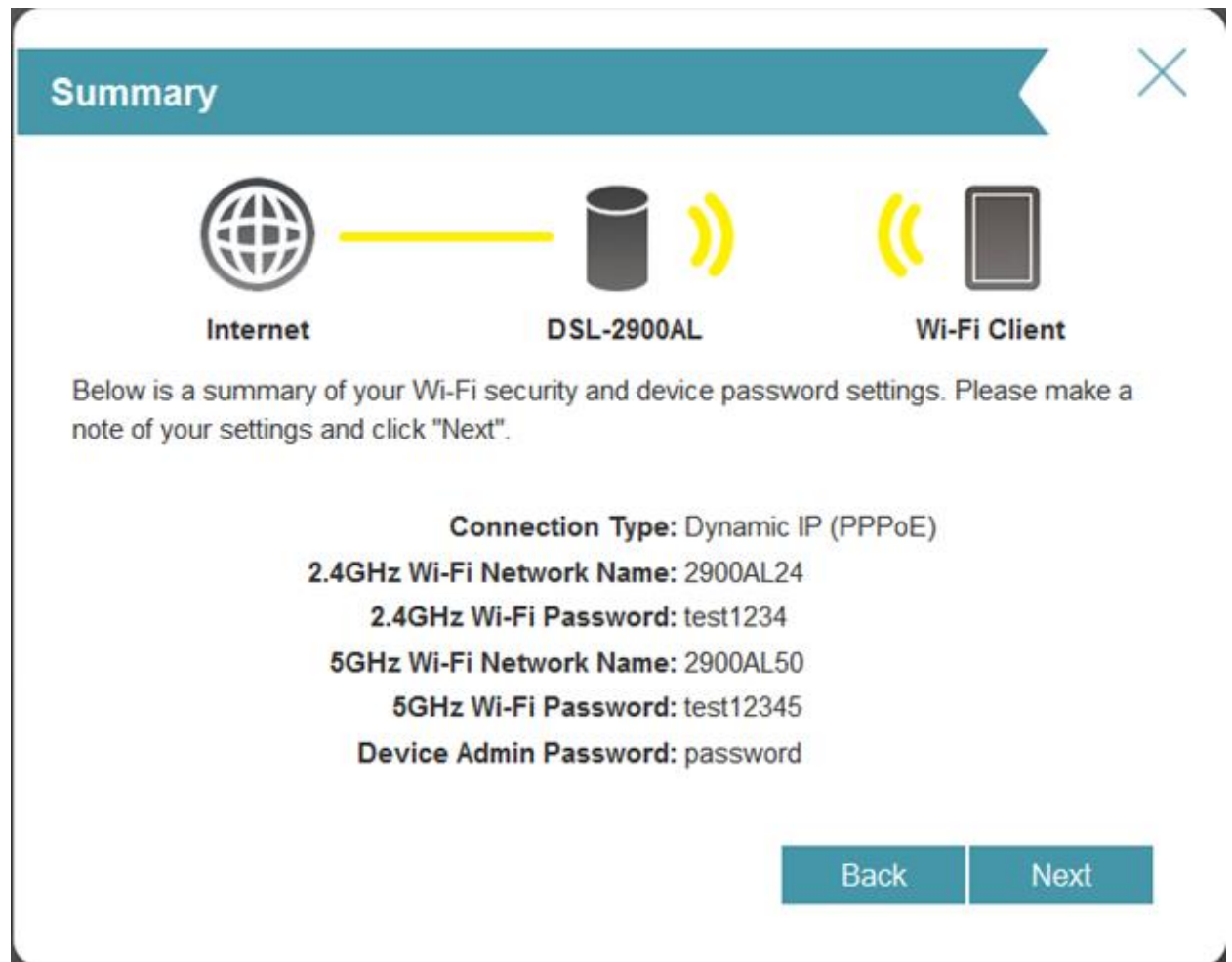
Internet — DSL-2900AL — Wi-Fi Client

By default, your new D-Link device does not have a password configured for administrator access to the Web-based configuration utility. To secure your new device, please create a password below.

Device Admin Password:

Back Next

You will be shown a summary of your modem router settings.



The image shows a 'Summary' window with a teal header and a close button in the top right. Below the header, there are three main sections: 'Internet' with a globe icon, 'DSL-2900AL' with a modem icon and a yellow signal line, and 'Wi-Fi Client' with a Wi-Fi signal icon and a smartphone icon. Below these icons, there is a paragraph of text: 'Below is a summary of your Wi-Fi security and device password settings. Please make a note of your settings and click "Next".' This is followed by a list of settings: 'Connection Type: Dynamic IP (PPPoE)', '2.4GHz Wi-Fi Network Name: 2900AL24', '2.4GHz Wi-Fi Password: test1234', '5GHz Wi-Fi Network Name: 2900AL50', '5GHz Wi-Fi Password: test12345', and 'Device Admin Password: password'. At the bottom right, there are two teal buttons labeled 'Back' and 'Next'.

Summary

Internet **DSL-2900AL** **Wi-Fi Client**

Below is a summary of your Wi-Fi security and device password settings. Please make a note of your settings and click "Next".

Connection Type: Dynamic IP (PPPoE)
2.4GHz Wi-Fi Network Name: 2900AL24
2.4GHz Wi-Fi Password: test1234
5GHz Wi-Fi Network Name: 2900AL50
5GHz Wi-Fi Password: test12345
Device Admin Password: password

[Back](#) [Next](#)

The next step will take you through setting up a free myDLink account if you do not have one already.

Your modem router's Internet and Wireless configuration is now complete.

Manual configuration, bypassing the Setup Wizard.

If you wish to configure the modem router manually you can close the Setup Wizard and enter the settings directly:

Internet connection settings under Settings > Internet

Settings >> Internet	DSL	ATM	IPv6	Save
----------------------	---------------------	---------------------	----------------------	------

WAN Access Type: ▼

PVC: ▼

[Advanced Settings...](#)

Enable Tagged Vlan:

My Internet Connection is: ▼

Username:

Password:

Reconnect Mode: ▼

[Advanced Settings...](#)

Address Mode: ▼

Service Name:

Primary DNS Server:

Secondary DNS Server:

MTU: ▼

COPYRIGHT © 2014 D-Link

Wi-Fi settings under Settings > Wireless

Settings >> Wireless

[Guest Zone](#)

Save

2.4GHz

Status: Enabled

Wi-Fi Name (SSID):

Password:

[Advanced Settings...](#)

Security Mode: ▾

802.11 Mode: ▾

Wi-Fi Channel: ▾

Transmission Power: ▾

Channel Width: ▾

Coexistence: Enabled

Visibility Status: ▾

[Schedule:](#) ▾

5GHz

Status: Enabled

Wi-Fi Name (SSID):

Password:

[Advanced Settings...](#)

Security Mode: ▾

802.11 Mode: ▾

Wi-Fi Channel: ▾

Transmission Power: ▾

Channel Width: ▾

Visibility Status: ▾

[Schedule:](#) ▾