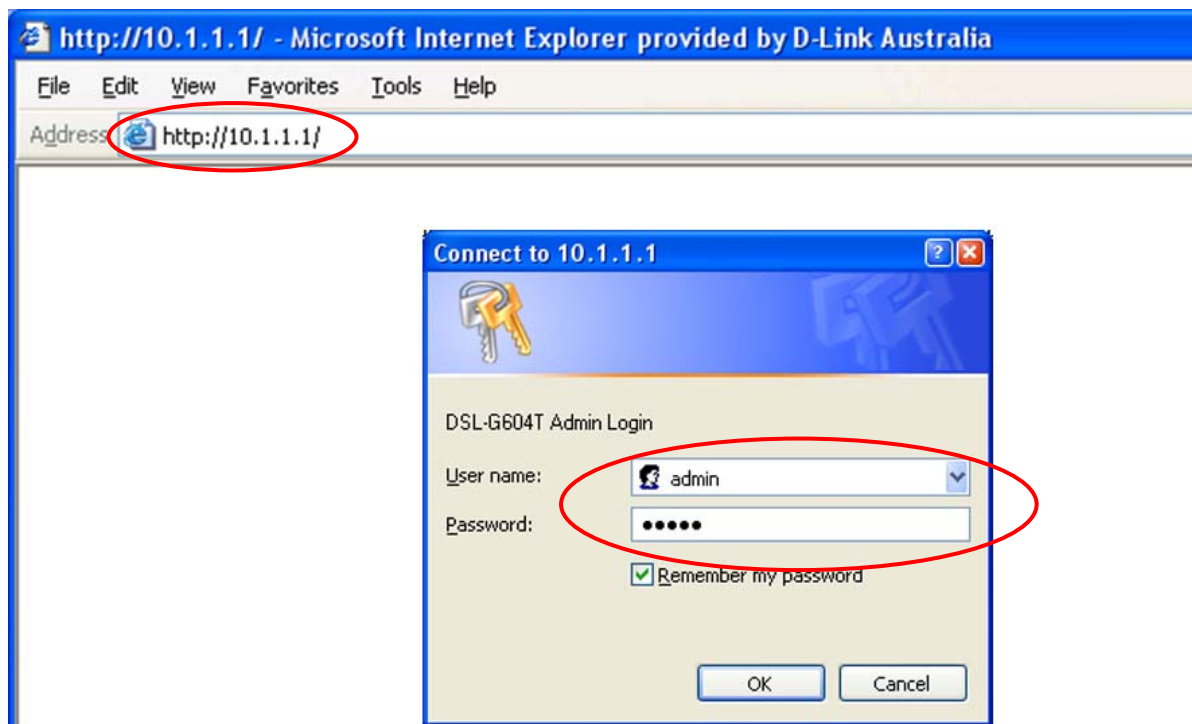


How to Enable Security on Wireless Network

It is recommended to secure your wireless network. To do that you can enable encryption on your router. As a result of this only the users who know the encryption key ("password") you have set on your router, could access the wireless network. It is recommended to use WPA-PSK encryption or, if your wireless card does not support it, use WEP.

To enable wireless and encryption please follow these steps:

Step 1. Open your web browser and enter the IP address of the router (<http://10.1.1.1>). Enter user name and password (default username "admin" and password is "admin").



Step 2. Click on **Wireless** button on the left side of your screen.



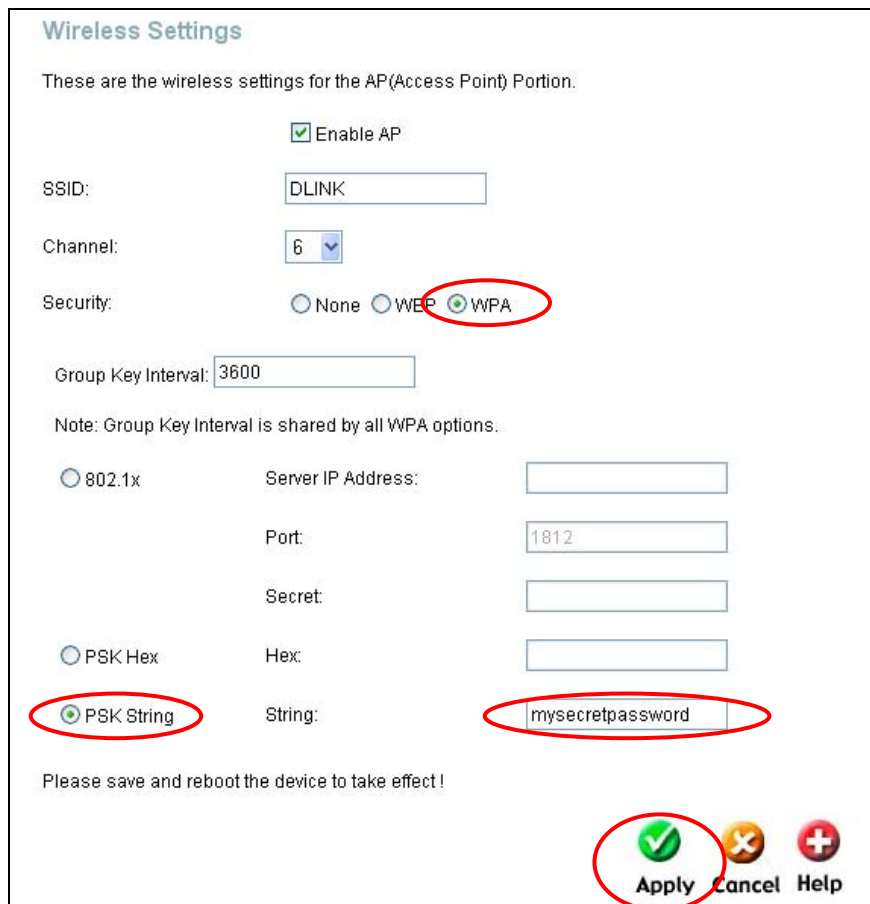
Step 3. Enable security and specify your security key (“password”). We recommend using WPA-PSK (WPA Personal). If any of your wireless clients do not support it, use WEP.

Option 1: WPA-PSK (more secure)

Under **Security** select “**WPA**”.

Select the “**PSK String**” option. In the “**String**” field type in a password/key (you can just make it up). The key should be at least 8 characters long.

Click on **Apply**.



Option 2: WEP (less secure)

Under **Security** select “**WEP**”. Tick the “**Enable WEP Wireless Security**” option.

Under **Encryption Key** type in the encryption key you want to use. 64 bit encryption requires a 10 character HEX key (HEX characters include numbers from 0 to 9 and letters from A to F).

Click on **Apply**.

Wireless Settings

These are the wireless settings for the AP(Access Point) Portion.

Enable AP

SSID:

Channel:

Security: None WEP WPA

Enable WEP Wireless Security

Authentication Type:

Select	Encryption Key	Cipher
<input checked="" type="radio"/>	<input type="text" value="1234ABCDEF"/>	<input type="text" value="64 bits"/>
<input type="radio"/>	<input type="text"/>	<input type="text" value="64 bits"/>
<input type="radio"/>	<input type="text"/>	<input type="text" value="64 bits"/>
<input type="radio"/>	<input type="text"/>	<input type="text" value="64 bits"/>

Enter 10, 26, 58 hexadecimal digits(0~9,A~F) for 64, 128, or 256 bit Encryption Keys respectively. e.g., AAAAAAAAAA for a key length of 64 bits.

Please save and reboot the device to take effect !

Step 4. To save the new settings into the router's memory go to **Tools > System**. Click on **Save and Reboot** button. The router will save the settings and restart.

Step 5. Reconnect your wireless clients (computers) to the wireless network using the specified key (“password”). Note that after applying the security on your router, your wireless clients will lose wireless connectivity until you specify the correct key (“password”).

To reconnect to the wireless network:

On your wireless computers delete the old profile for the wireless network connection (if present). Attempt to connect to your wireless network again. You will be prompted to enter the encryption key (“password”). Type in the key you have entered in Step 2. Note that the WPA/WPA2-PSK key is case sensitive.

To delete the old profile:

D-Link Air Utility

Click on Site Survey. Highlight the WLAN profile under “Profiles” field and click on Remove.

Windows XP Utility

Go to Network Connections folder, right-click Wireless Connection > Properties > Wireless Networks. Highlight the profile under “Preferred networks” field and click on Remove.

Windows Vista

Control Panel > Network and Internet > Network and Sharing Centre. Click on “Manage wireless networks”. Right-click on the network you want to remove and select “Remove network”.

The new profile will be created automatically after successful connection to the secured network.