

**D-Link®**

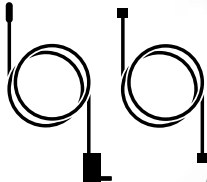
**INSTALL GUIDE**



# Your Little Black Box



**Power** **HDMI**



SD/MMC card slot







# Your Two-Faced Remote

**Play/Pause** - We know you get it

**Directional Pad** - Navigate your way around

**Enter Button** - Accept the current selection / show playback menu

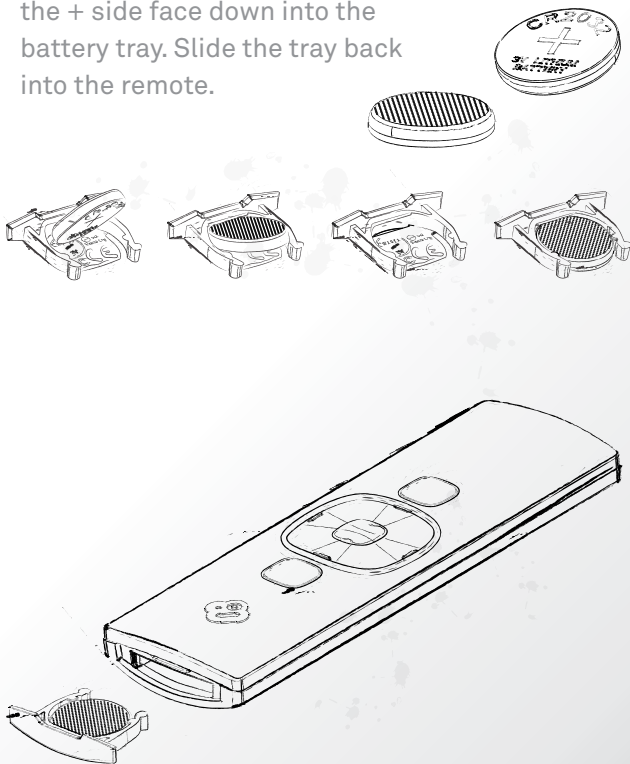
**Menu** - Go back / show jump menu





# Inserting the Battery

With a coin, remove the battery tray. Insert the battery with the + side face down into the battery tray. Slide the tray back into the remote.





## Step 1

Using the supplied HDMI cable, connect the Boxee Box to your TV.





## Step 2

Using the supplied power adapter, plug the Boxee Box into a power source.







## Step 3

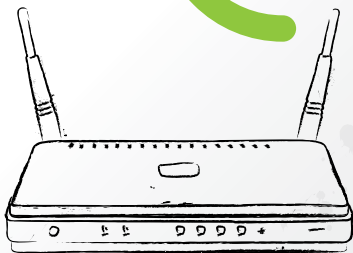
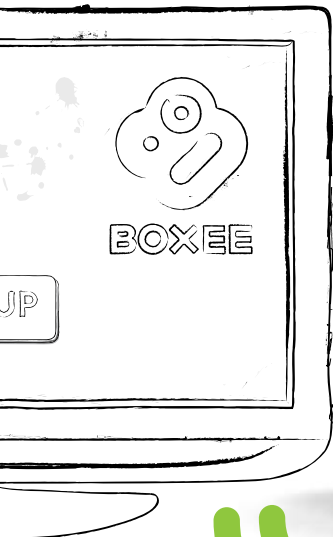
Turn on your Boxee Box. Then use the TV's remote control to turn on your TV and set it to the correct HDMI input source. You should see the Boxee Box smiling at you.





## Step 4

Follow the on-screen instructions to configure your new Boxee Box by D-Link.



**Warning:** To block adult content, configure Parental Controls under settings.

**NEED HELP?**

[support.dlink.com/boxeebox](http://support.dlink.com/boxeebox)



# Pairing your Boxee Remote to the Boxee Box

Your remote comes from the factory already paired to the Boxee Box. If you are noticing interference with your remote from other devices, you may pair the remote with the Boxee Box in the easy steps below:

1. Make sure to move other devices away from the Boxee Box (or turn them off)
2. Put the remote in close proximity with the Boxee Box.
3. Press and hold the OK key on the side of the remote for 5 seconds.
4. Pairing is complete when you can control the Boxee Box. There is no visual indication of pairing on the device.
5. You can immediately use the remote control now.



# Need Help With Something?

Find out how to get the most out of your Boxee Box with tutorial videos, tech support, and more at [dlink.com/boxeebox](http://dlink.com/boxeebox)

Trouble setting up your Boxee Box?  
Give us a call and we'll walk you through it!

## United States

(877) 453-4565  
<http://support.dlink.com>

## Canada

(800) 361-5265  
<http://support.dlink.ca>

## Australia

<http://support.dlink.com.au>

## New Zealand

<http://support.dlink.com.au>

©2010 D-Link Corporation/D-Link Systems, Inc. All rights reserved. D-Link, the D-Link logo, and the D-Link RoHS logo are trademarks or registered trademarks of D-Link Corporation or its subsidiaries in the United States and/or other countries. Boxee and the Boxee logo are trademarks or registered trademarks of Boxee Inc. or its subsidiaries in the United States and/or other countries. Other trademarks or registered trademarks are the property of their respective owners.

**BOXEE**  
**BOX**