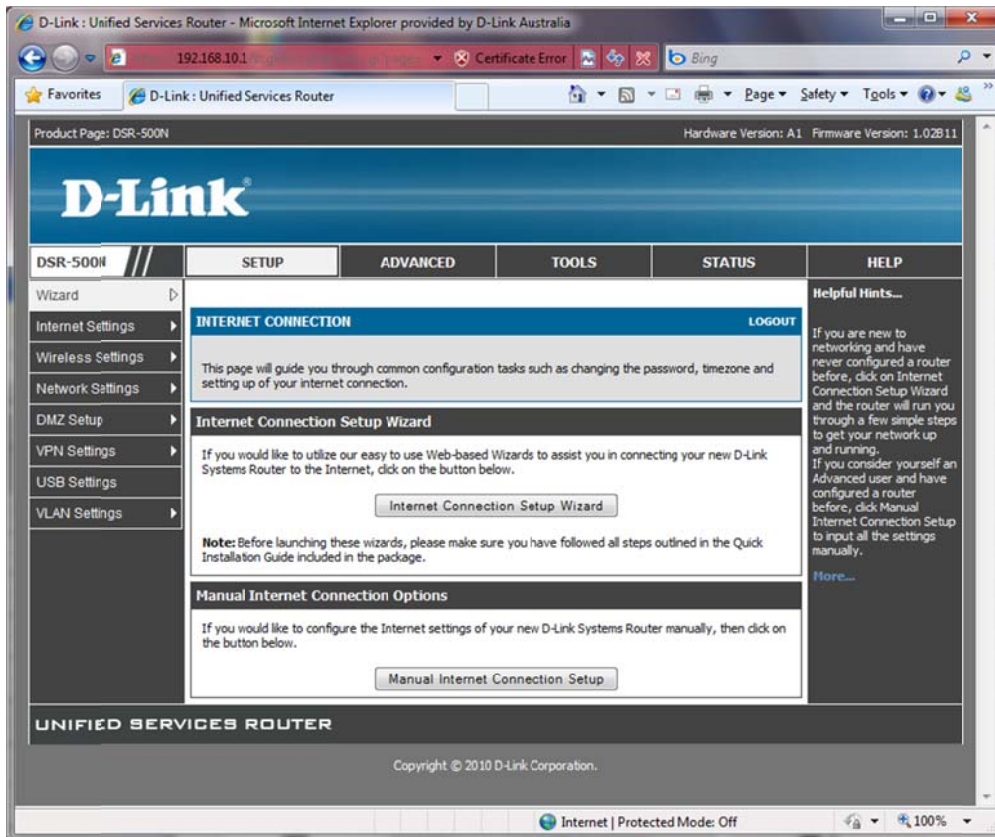
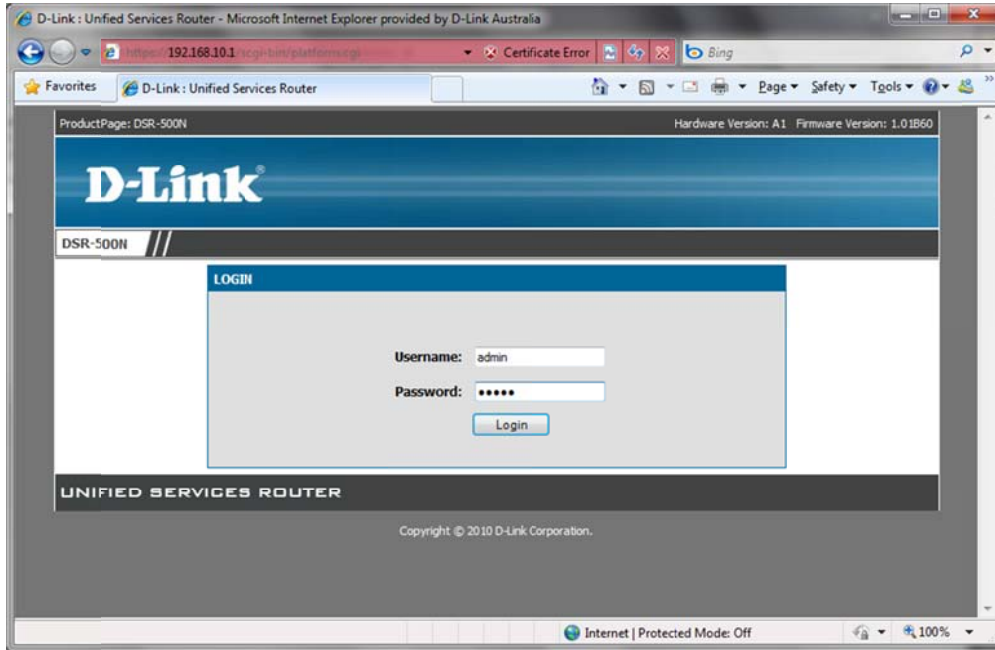


DSR-500N

Fw 1.02B12

192.168.10.1 admin/admin



D-Link: Unified Services Router - Microsoft Internet Explorer provided by D-Link Australia

Product Page: DSR-500N Hardware Version: A1 Firmware Version: 1.02B11

D-Link

DSR-500N	SETUP	ADVANCED	TOOLS	STATUS	HELP
Wizard					Helpful Hints... If you are new to networking and have never configured a router before, click on Internet Connection Setup Wizard and the router will run you through a few simple steps to get your network up and running. If you consider yourself an Advanced user and have configured a router before, click Manual Internet Connection Setup to input all the settings manually. More...
Internet Settings	WAN1 Settings	WAN1 Status		LOGOUT	
Wireless Settings	WAN2 Settings	WAN1 Setup			
Network Settings	Configurable Port	WAN1 PPPoE Profiles			
DMZ Setup	Routing Mode	Setup Wizard			
VPN Settings	WAN Mode				
USB Settings					
VLAN Settings					
<p>Note: Before launching these wizards, please make sure you have followed all steps outlined in the Quick Installation Guide included in the package.</p> <p>Manual Internet Connection Options</p> <p>If you would like to configure the Internet settings of your new D-Link Systems Router manually, then click on the button below.</p> <p style="text-align: center;"><input type="button" value="Manual Internet Connection Setup"/></p>					
<p>UNIFIED SERVICES ROUTER</p> <p>Copyright © 2010 D-Link Corporation.</p>					

https://192.168.10.1/scgi-bin/platform.cgi?page=wan1Status

D-Link: Unified Services Router - Microsoft Internet Explorer provided by D-Link Australia

Product Page: DSR-500N Hardware Version: A1 Firmware Version: 1.02B11

D-Link

DSR-500N	SETUP	ADVANCED	TOOLS	STATUS	HELP
Wizard					Helpful Hints... The Status page will give you an overview of the primary and secondary internet connections from the router. Active WAN links will have the WAN State as UP, and will show a Disable button. If the WAN IP addresses are provided by a DHCP ISP, the DHCP lease can be released or renewed to refresh the connection. Configured but inactive connections will have WAN State as down and can be brought up with the Enable button. More...
Internet Settings	WAN1 STATUS			LOGOUT	
Wireless Settings	<p>The page provides current information regarding the WAN1 interface. Along with the information a user can enable or disable his Internet connection from this page.</p>				
Network Settings	WAN1 Status (IPv4)				
DMZ Setup	MAC Address:	00:18:E7:D9:F4:6C			
VPN Settings	IPv4 Address:	0.0.0.0 / 255.255.255.0			
USB Settings	Wan State:	DOWN			
VLAN Settings	NAT (IPv4 only):	Enabled			
	IPv4 Connection Type:	Dynamic IP (DHCP)			
	IPv4 Connection State:	Not Yet Connected			
	Link State:	LINK DOWN			
	WAN Mode:	Use only single WAN port: Dedicated WAN			
	Gateway:	0.0.0.0			
	Primary DNS:	0.0.0.0			
	Secondary DNS:	0.0.0.0			
	<p><input type="button" value="Renew"/> <input type="button" value="Release"/></p>				

Internet | Protected Mode: Off

D-Link : Unified Services Router - Microsoft Internet Explorer provided by D-Link Australia

http://192.168.10.1/cgi-bin/platform.cgi/page

DSR-500N // SETUP ADVANCED TOOLS STATUS HELP

Wizard Internet Settings Wireless Settings Network Settings DMZ Setup VPN Settings USB Settings VLAN Settings

WAN1 SETUP

LOGOUT

This page allows you to set up your Internet connection. Ensure that you have the Internet connection information such as the IP Addresses, account information, etc. This information is usually provided by your ISP or network administrator.

Save Settings Don't Save Settings

ISP Connection Type

ISP Connection Type: DHCP

PPPoE Profile Name: Static

User Name: _____

Password: _____

Secret: _____

MPPE Encryption:

Split Tunnel:

Connectivity Type: Keep Connected

Idle Time: _____

My IP Address: _____

Server Address: _____

Host Name: _____

Internet (IP) Address

IP Address Source: Get Dynamically from ISP

IP Address: _____

IP Subnet Mask: _____

Gateway IP Address: _____

Domain Name System (DNS) Servers

DNS Server Source: Get Dynamically from ISP

Primary DNS Server: _____

Secondary DNS Server: _____

Mac Address

MAC Address Source: Use Default Address

MAC Address: _____

Helpful Hints...
The setup page lets you configure the ISP settings to enable this router to connect to the internet. If you want to use a PPPoE ISP, you should first configure a PPPoE profile for the appropriate WAN and then assign that profile in this configuration page. Note: The second profile is meant for Japan Multi-PPPoE scenario.
More...

Done Internet | Protected Mode: Off 85%

D-Link : Unified Services Router - Microsoft Internet Explorer provided by D-Link Australia

http://192.168.10.1/cgi-bin/platform.cgi/page

Product Page: DSR-500N Hardware Version: A1 Firmware Version: 1.02B11

D-Link

DSR-500N // SETUP ADVANCED TOOLS STATUS HELP

Wizard Internet Settings Wireless Settings Network Settings DMZ Setup VPN Settings USB Settings VLAN Settings

PPPoE PROFILES

LOGOUT

The PPPoE Profiles page offers a convenient way to maintain multiple PPPoE accounts, which can then be associated with the WAN interface. The PPPoE profile is referenced on the WAN Configuration page. The Profiles table lists the available PPPoE profiles and some attributes associated with each profile.

List of PPPoE Profiles for WAN1

<input type="checkbox"/>	Profile Name	Status	User Name	Authentication Type
<input type="button" value="Edit"/> <input type="button" value="Delete"/> <input type="button" value="Add"/>				

Helpful Hints...
Profiles are particularly useful when your ISP supports multiple concurrent PPPoE sessions. Profiles configured here will appear as options in the PPPoE Profile Name in the WAN configuration page.
More...

Done Internet | Protected Mode: Off 100%

D-Link : Unified Services Router - Microsoft Internet Explorer provided by D-Link Australia

http://192.168.10.1/cgi-bin/platform.cgi Certificate Error Bing

Product Page: DSR-500N Hardware Version: A1 Firmware Version: 1.02B11

D-Link

DSR-500N	SETUP	ADVANCED	TOOLS	STATUS	HELP
----------	-------	----------	-------	--------	------

Wizard

Internet Settings

Wireless Settings

Network Settings

DMZ Setup

VPN Settings

USB Settings

VLAN Settings

PPPoE PROFILES

LOGOUT

This page allows user to configure a PPPoE profile. This profile can then be attached to a WAN to make a PPPoE connection with the ISP.

Save Settings Den! Save Settings

PPPoE Profile Configuration

Profile Name:

User Name:

Password:

Service: (Optional)

Authentication Type:

Connectivity Type:

Idle Time:

Internet (IP) Address

IP Address Source:

IP Address:

IP Subnet Mask:

Domain Name System (DNS) Servers

DNS Server Source:

Primary DNS Server:

Secondary DNS Server:

Helpful Hints...
If you are unsure about the Authentication Type, then keep it as 'Auto-negotiate'. Also you can configure some idle timeout value to disconnect the PPPoE connection automatically, if you are not using Internet.
[More...](#)

Done Internet | Protected Mode: Off 100%

D-Link : Unified Services Router - Microsoft Internet Explorer provided by D-Link Australia

Product Page: DSR-500N Hardware Version: A1 Firmware Version: 1.02B11

D-Link

DSR-500N // SETUP ADVANCED TOOLS STATUS HELP

Wizard Internet Settings Wireless Settings Network Settings DMZ Setup VPN Settings USB Settings VLAN Settings

PPPoE PROFILES

LOGOUT

This page allows user to configure a PPPoE profile. This profile can then be attached to a WAN to make a PPPoE connection with the ISP.

Save Settings Don't Save Settings

PPPoE Profile Configuration

Profile Name:

User Name:

Password:

Service: (Optional)

Authentication Type: Auto-negotiate

Connectivity Type: Keep Connected
Keep Connected
Idle Time

Idle Time:

Internet (IP) Address

IP Address Source: Get Dynamically from ISP

IP Address:

IP Subnet Mask:

Domain Name System (DNS) Servers

DNS Server Source: Get Dynamically from ISP

Primary DNS Server:

Secondary DNS Server:

Helpful Hints...
If you are unsure about the Authentication Type, then keep it as 'Auto-negotiate'. Also you can configure some idle timeout value to disconnect the PPPoE connection automatically, if you are not using Internet.
More...

Done Internet | Protected Mode: Off 100%

D-Link : Unified Services Router - Microsoft Internet Explorer provided by D-Link Australia

Product Page: DSR-500N Hardware Version: A1 Firmware Version: 1.02B11

D-Link

DSR-500N // SETUP ADVANCED TOOLS STATUS HELP

Wizard Internet Settings Wireless Settings Network Settings DMZ Setup VPN Settings USB Settings VLAN Settings

CONFIGURABLE PORT

LOGOUT

This page allows you to configure the Port 6 of the your router to either WAN2 or DMZ.

Save Settings Don't Save Settings

Configurable Port Status

WAN:

DMZ:

Helpful Hints...
The router allows you to determine the operating mode for this port to be either a hardware DMZ or a secondary Ethernet WAN port. To configure WAN2 settings, the configurable port must be set to WAN.
More...

UNIFIED SERVICES ROUTER

Copyright © 2010 D-Link Corporation

Internet | Protected Mode: Off 100%

D-Link: Unified Services Router - Microsoft Internet Explorer provided by D-Link Australia

http://192.168.10.1/cgi-bin/platform.cgi/page Certificate Error Bing

D-Link: Unified Services Router

DSR-500M // SETUP ADVANCED TOOLS STATUS HELP

Wizard

Internet Settings > **ROUTING MODE** LOGOUT

Wireless Settings >

Network Settings >

DMZ Setup >

VPN Settings >

USB Settings >

VLAN Settings >

Helpful Hints...
The Routing mode determines how traffic is handled when received on one physical interface. NAT is the most common application for most routers, and allows you to hide internal LAN IP addresses from internet devices. Transparent mode does not perform NAT and lets you bridge traffic between the LAN and WAN.
More...

This page allows user to configure different routing modes like NAT, Classical Routing and Transparent. This page also allows to configure the RIP (Routing Information Protocol)

Save Settings Don't Save Settings

Routing Mode between WAN and LAN

HIAT:

Classical Routing:

Transparent

Dynamic Routing (RIP)

RIP Direction: None

RIP Version: Disabled

Authentication for RIP-2B/2M

Enable Authentication for RIP-2B/2M:

First Key Parameters

MDS Key Id:

MDS Auth Key:

Not Valid Before: MM DD YYYY HH MM SS
 / / - : :

Not Valid After: MM DD YYYY HH MM SS
 / / - : :

Second Key Parameters

MDS Key Id:

MDS Auth Key:

Not Valid Before: MM DD YYYY HH MM SS
 / / - : :

Not Valid After: MM DD YYYY HH MM SS
 / / - : :

Internet | Protected Mode: Off 100%

D-Link: Unified Services Router - Microsoft Internet Explorer provided by D-Link Australia

Product Page: DSR-500N Hardware Version: A1 Firmware Version: 1.02B11

D-Link

DSR-500N // SETUP ADVANCED TOOLS STATUS HELP

Wizard Internet Settings Wireless Settings Network Settings DMZ Setup VPN Settings USB Settings VLAN Settings

WAN MODE

LOGOUT

This page allows user to configure the policies on the two WAN ports for Internet connection.

Save Settings Don't Save Settings

Port Mode

Auto-Rollover using WAN port: WANI WAN1

Load Balancing: Round Robin Round Robin Spillover Mode

Use only single WAN port:

WAN Failure Detection Method

None:

DNS lookup using WAN DNS Servers:

DNS lookup using DNS Servers:

WANI: 202.153.32.2

WAN2: 202.153.32.2

Ping these IP addresses:

WANI: 192.168.10.1

WAN2: 192.168.20.1

Retry Interval is: 30 (Seconds)

Failover after: 4 (Failures)

UNIFIED SERVICES ROUTER

Copyright © 2010 D-Link Corporation.

Internet | Protected Mode: Off

D-Link: Unified Services Router - Microsoft Internet Explorer provided by D-Link Australia

Product Page: DSR-500N Hardware Version: A1 Firmware Version: 1.02B11

D-Link

DSR-500N // SETUP ADVANCED TOOLS STATUS HELP

Wizard Internet Settings Wireless Settings Network Settings DMZ Setup VPN Settings USB Settings VLAN Settings

ACCESS POINTS

LOGOUT

Access Points table lists the configured Access Points (AP) for this device. From this table, you can review the status of each AP (over all radios) and AP parameter configuration settings.

LIST OF AVAILABLE ACCESS POINTS

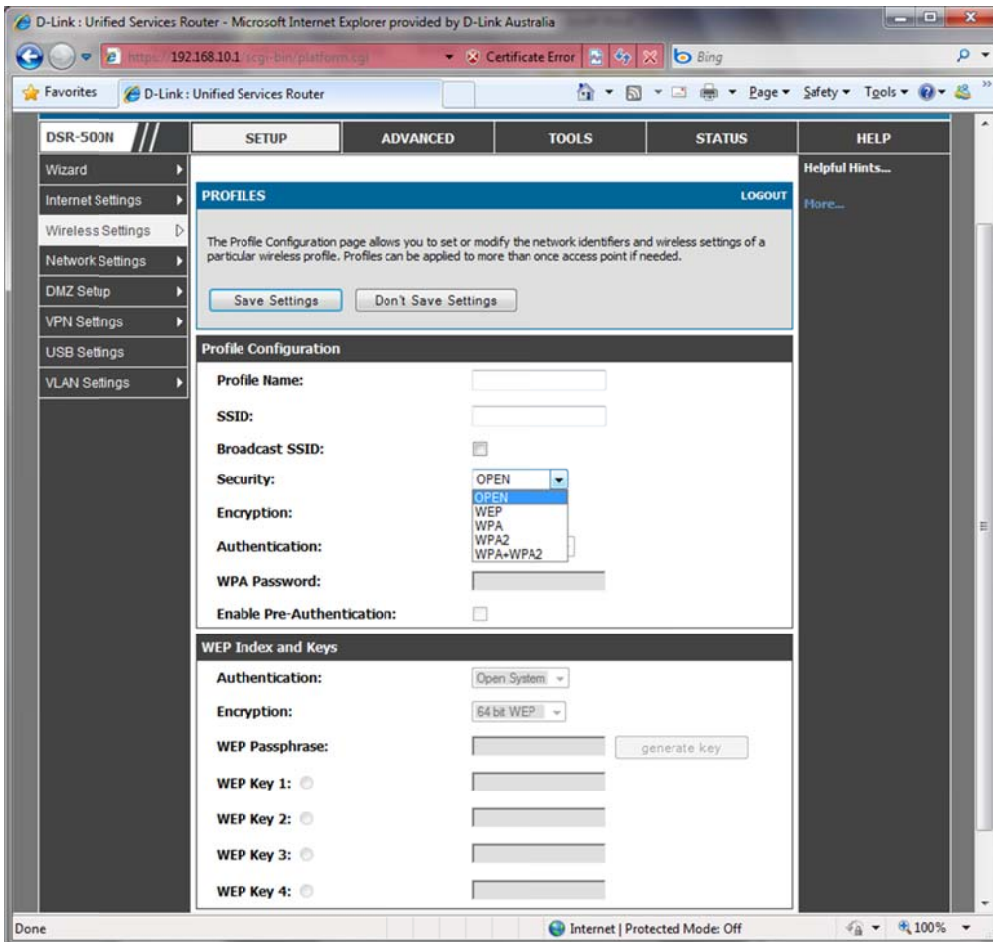
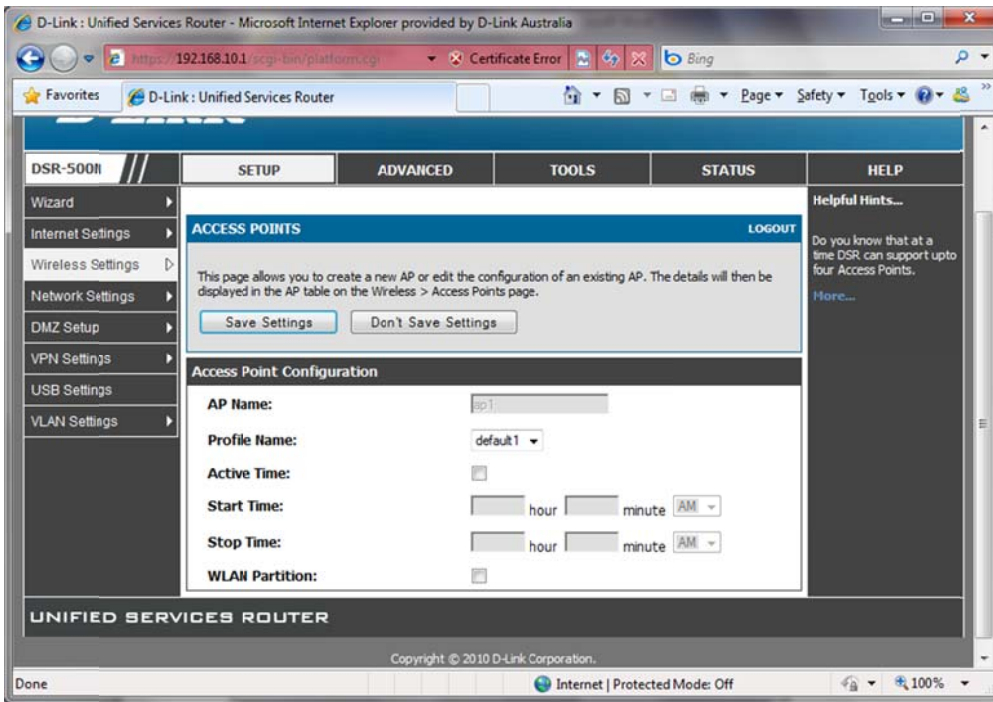
Status	Virtual AP	SSID	Broadcast	Profile Name	Active Time	Start Time	Stop Time
<input checked="" type="checkbox"/>	ap1	DSR-500N_1	<input checked="" type="checkbox"/>	default1	No	-	-

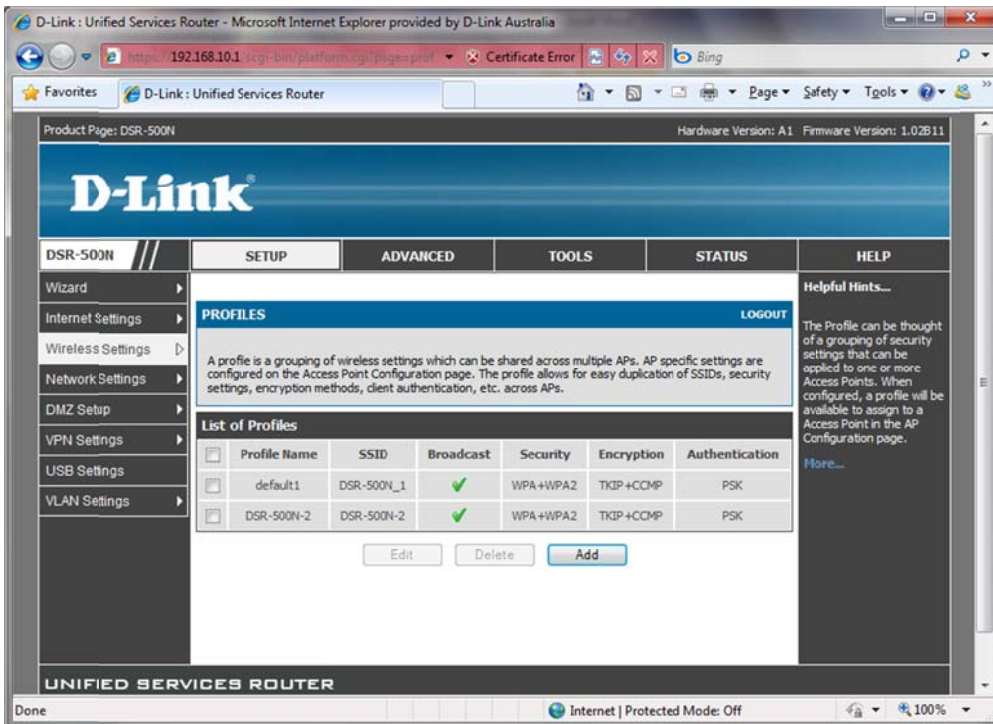
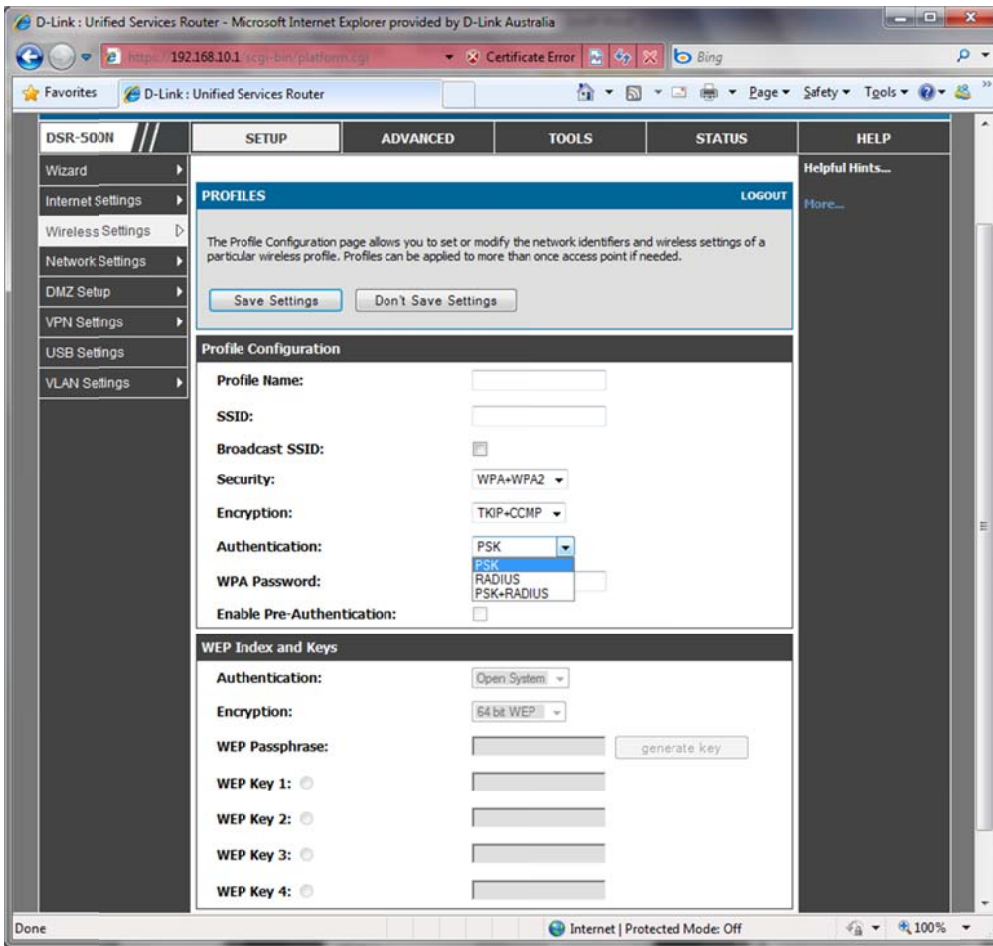
Edit Enable Disable Delete Add

MAC Filter Status

Helpful Hints... The DSR supports up to four concurrent Access Points. Each can have unique access policies, security settings, and bandwidth shaping depending on your needs.

Internet | Protected Mode: Off





D-Link : Unified Services Router - Microsoft Internet Explorer provided by D-Link Australia

Product Page: DSR-500N Hardware Version: A1 Firmware Version: 1.02B11

D-Link

DSR-500N // SETUP ADVANCED TOOLS STATUS HELP

Wizard Internet Settings Wireless Settings Network Settings DMZ Setup VPN Settings USB Settings VLAN Settings

RADIO SETTINGS LOGOUT

This page allows you to configure the hardware settings for each available radio card.

Save Settings Don't Save Settings

Radio Configuration

Operating Frequency: 2.4GHz

Mode: ng

Channel Spacing: g and b g only

Control Side Band: no n only

Current Channel: 1 - 2.412GHz

Channel: 1 - 2.412GHz

Default Transmit Power: 31 (dBm)

Transmit Power: 9 dBm

Transmission Rate: Best(Automatic)

Helpful Hints... This page lets you configure the radio's operating mode, channel, or transmission power. These settings are shared among all configured access points. More...

Done Internet | Protected Mode: Off 100%

D-Link : Unified Services Router - Microsoft Internet Explorer provided by D-Link Australia

Product Page: DSR-500N Hardware Version: A1 Firmware Version: 1.02B11

D-Link

DSR-500N // SETUP ADVANCED TOOLS STATUS HELP

Wizard Internet Settings Wireless Settings Network Settings DMZ Setup VPN Settings USB Settings VLAN Settings

RADIO SETTINGS LOGOUT

This page allows you to configure the hardware settings for each available radio card.

Save Settings Don't Save Settings

Radio Configuration

Operating Frequency: 2.4GHz

Mode: ng

Channel Spacing: 20MHz

Control Side Band: 20/40MHz

Current Channel: 1 - 2.412GHz

Channel: 1 - 2.412GHz

Default Transmit Power: 31 (dBm)

Transmit Power: 9 dBm

Transmission Rate: Best(Automatic)

Helpful Hints... This page lets you configure the radio's operating mode, channel, or transmission power. These settings are shared among all configured access points. More...

Done Internet | Protected Mode: Off 100%

D-Link : Unified Services Router - Microsoft Internet Explorer provided by D-Link Australia

Product Page: DSR-500N Hardware Version: A1 Firmware Version: 1.02B11

D-Link

DSR-500N // SETUP ADVANCED TOOLS STATUS HELP

Wizard Internet Settings Wireless Settings Network Settings DMZ Setup VPN Settings USB Settings VLAN Settings

RADIO SETTINGS LOGOUT

This page allows you to configure the hardware settings for each available radio card.

Save Settings Don't Save Settings

Radio Configuration

Operating Frequency: 2.4GHz
 Mode: ng
 Channel Spacing: 20MHz
 Control Side Band: Upper
 Current Channel: 1 - 2.412GHz
 Channel: 1 - 2.412GHz
 Default Transmit Power: (dBm)
 Transmit Power:
 Transmission Rate:

UNIFIED SERVICES ROUTER

Copyright © 2010 D-Link Corporation.

Internet | Protected Mode: Off

D-Link : Unified Services Router - Microsoft Internet Explorer provided by D-Link Australia

Product Page: DSR-500N Hardware Version: A1 Firmware Version: 1.02B11

D-Link

DSR-500N // SETUP ADVANCED TOOLS STATUS HELP

Wizard Internet Settings Wireless Settings Network Settings DMZ Setup VPN Settings USB Settings VLAN Settings

RADIO SETTINGS LOGOUT

This page allows you to configure the hardware settings for each available radio card.

Save Settings Don't Save Settings

Radio Configuration

Operating Frequency: Best(Automatic)
 Mode: MCS15-130(270)
 Channel Spacing: MCS14-117(243)
 Control Side Band: MCS13-104(216)
 Current Channel: MCS12-78(162)
 Channel: MCS11-52(108)
 Default Transmit Power: MCS10-38(81)
 Transmit Power: MCS9-26(54)
 Transmission Rate: MCS8-13(27)
 MCS7-65(135)
 MCS6-58(121.5)
 MCS5-52(108)
 MCS4-39(81)
 MCS3-26(54)
 MCS2-19.5(40.5)
 MCS1-13(27)
 MCS0-6.5(13.5)
 54
 48
 36
 24
 18
 12
 11
 9
 6
 5.5
 2
 1

UNIFIED SERVICES ROUTER

Copyright © 2010 D-Link Corporation.

Internet | Protected Mode: Off

D-Link : Unified Services Router - Microsoft Internet Explorer provided by D-Link Australia

Product Page: DSR-500N Hardware Version: A1 Firmware Version: 1.02B11

D-Link

DSR-500N // SETUP ADVANCED TOOLS STATUS HELP

Wizard Internet Settings Wireless Settings Network Settings DMZ Setup VPN Settings USB Settings VLAN Settings

LAN SETUP LOGOUT

The LAN Configuration page allows you to configure the LAN interface of the router including the DHCP

Don't Save Settings

LAN DHCP Reserved IPs

LAN DHCP Leased Clients

192.168.10.1

Subnet Mask: 255.255.255.0

DHCP

DHCP Mode: DHCP Server

Starting IP Address: 192.168.10.100

Ending IP Address: 192.168.10.254

Primary DNS Server:

Secondary DNS Server:

WINS Server:

Lease Time: 24

Relay Gateway:

LAN Proxy

Enable DNS Proxy:

Run-Time User Authentication

Enable Run-Time User Authentication:

Helpful Hints... Changes here affect all devices connected to the router's LAN switch and also wireless LAN clients. Note that a change to the LAN IP address will require all LAN hosts to be in the same subnet and use the new address to access this GUI. More...

https://192.168.10.1/scgi-bin/platform.cgi?page=lanSetup.htm# Internet | Protected Mode: Off

D-Link : Unified Services Router - Microsoft Internet Explorer provided by D-Link Australia

Product Page: DSR-500N Hardware Version: A1 Firmware Version: 1.02B11

D-Link

DSR-500N // SETUP ADVANCED TOOLS STATUS HELP

Wizard Internet Settings Wireless Settings Network Settings DMZ Setup VPN Settings USB Settings VLAN Settings

LAN SETUP LOGOUT

The LAN Configuration page allows you to configure the LAN interface of the router including the DHCP Server which runs on it.

Save Settings Don't Save Settings

LAN TCP/IP Setup

IP Address: 192.168.10.1

Subnet Mask: 255.255.255.0

DHCP

DHCP Mode: DHCP Server

Starting IP Address: 192.168.10.254

Ending IP Address: 192.168.10.254

Primary DNS Server:

Secondary DNS Server:

WINS Server:

Lease Time: 24

Relay Gateway:

LAN Proxy

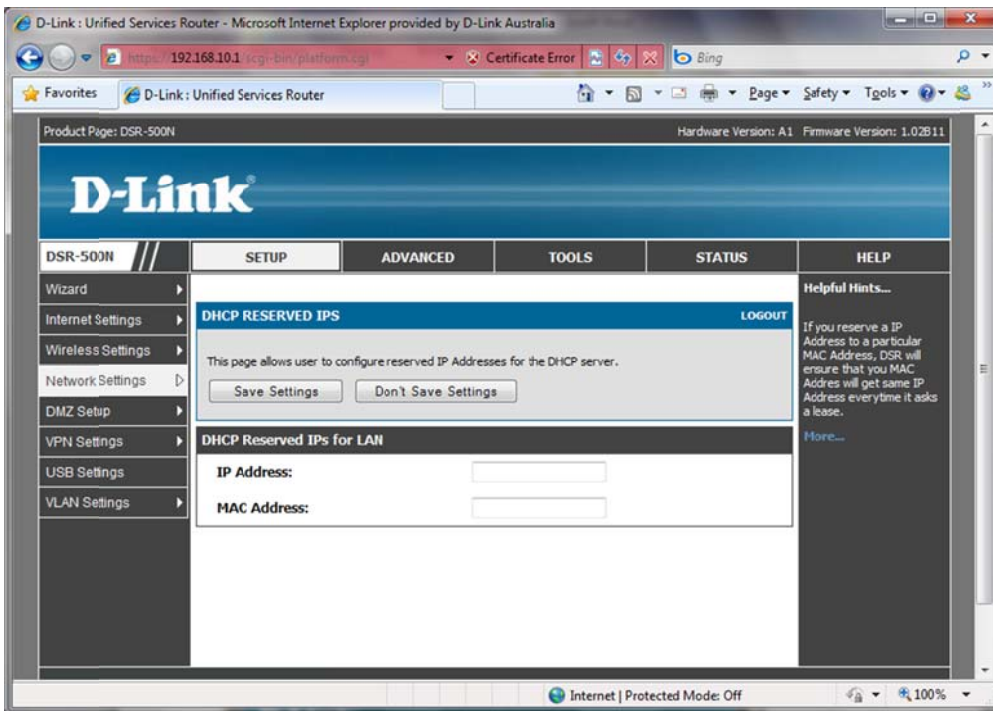
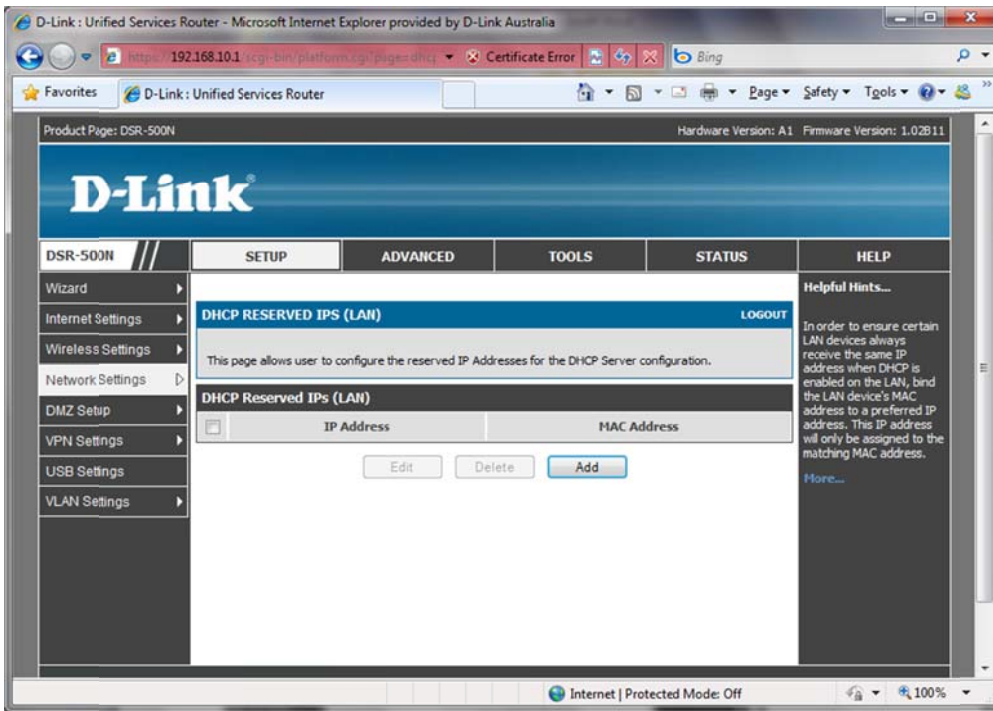
Enable DNS Proxy:

Run-Time User Authentication

Enable Run-Time User Authentication:

Helpful Hints... Changes here affect all devices connected to the router's LAN switch and also wireless LAN clients. Note that a change to the LAN IP address will require all LAN hosts to be in the same subnet and use the new address to access this GUI. More...

Internet | Protected Mode: Off



D-Link : Unified Services Router - Microsoft Internet Explorer provided by D-Link Australia

Product Page: DSR-500N Hardware Version: A1 Firmware Version: 1.02B11

D-Link

DSR-500N // SETUP ADVANCED TOOLS STATUS HELP

Wizard Internet Settings Wireless Settings Network Settings DMZ Setup VPN Settings USB Settings VLAN Settings

DHCP LEASED CLIENTS

LOGOUT

This table displays the list of DHCP clients connected to the LAN DHCP Server and to whom DHCP Server has given leases.

DHCP Leased Clients (LAN)	
IP Address	MAC Address

Helpful Hints...
If the LAN is serving DHCP addresses, this table will show the list of DHCP clients for the router's LAN DHCP server.
More...

Done Internet | Protected Mode: Off

D-Link : Unified Services Router - Microsoft Internet Explorer provided by D-Link Australia

Product Page: DSR-500N Hardware Version: A1 Firmware Version: 1.02B11

D-Link

DSR-500N // SETUP ADVANCED TOOLS STATUS HELP

Wizard Internet Settings Wireless Settings Network Settings DMZ Setup VPN Settings USB Settings VLAN Settings

Please set the Configurable port to DMZ in [Configurable Port Page](#) to configure this page.

DMZ SETUP

LOGOUT

The De-Militarized Zone (DMZ) is a network which, when compared to the LAN, has fewer firewall restrictions, by default. This zone can be used to host servers and give public access to them.

DMZ Setup Configuration

DMZ DHCP Reserved IPs

DMZ DHCP Leased Clients

	176.16.2.1
	255.255.255.0

DHCP for DMZ Connected Computers

DHCP Mode:

Starting IP Address:

Ending IP Address:

Primary DNS Server:

Secondary DNS Server:

WINS Server:

Lease Time:

Relay Gateway:

DMZ Proxy

Enable DNS Proxy:

Helpful Hints...
DMZ setup is similar to the LAN TCP/IP options. The network subnet for the DMZ can be different from the LAN, and firewall/VPN policies can be customized for the DMZ. The DMZ is typically used for network devices that you wish to expose to the internet, such as FTP or mail servers.
More...

https://192.168.10.1/scgi-bin/platform.cgi?page=dmzSetup.htm Internet | Protected Mode: Off

D-Link : Unified Services Router - Microsoft Internet Explorer provided by D-Link Australia

192.168.10.1/scgi-bin/platform.cgi?page=ipSec

Product Page: DSR-500N Hardware Version: A1 Firmware Version: 1.02B11

D-Link

DSR-500N	SETUP	ADVANCED	TOOLS	STATUS	HELP										
Wizard	<h2>IPSEC POLICIES</h2> <p>This page shows the list of configured IPsec VPN policies on the router. A user can also add, delete, edit, enable and disable IPsec VPN policies from this page.</p> <p>LOGOUT</p>				<p>Helpful Hints...</p> <p>An IPsec VPN can be established over the internet by configuring the appropriate policy here. You need to have matching parameters for both the connecting peers. Some important parameters (Type of the connection, Encryption algorithms used in communication etc.) are displayed here.</p> <p>More...</p>										
Internet Settings	<p>List of VPN Policies</p> <table border="1"> <thead> <tr> <th>Mode</th> <th>Local</th> <th>Remote</th> <th>Auth</th> <th>Encr</th> </tr> </thead> <tbody> <tr> <td> </td> <td> </td> <td> </td> <td> </td> <td> </td> </tr> </tbody> </table>					Mode	Local	Remote	Auth	Encr					
Mode	Local	Remote	Auth	Encr											
Wireless Settings	<p>SSL VPN Server <input type="checkbox"/> <input type="button" value="Enable"/> <input type="button" value="Disable"/> <input type="button" value="Delete"/> <input type="button" value="Add"/></p>														
Network Settings	<p>SSL VPN Client <input type="checkbox"/></p>														
DMZ Setup															
VPN Settings															
USB Settings															
VLAN Settings															

UNIFIED SERVICES ROUTER

Copyright © 2010 D-Link Corporation.

https://192.168.10.1/scgi-bin/platform.cgi?page=ipSec.htm# Internet | Protected Mode: Off 100%

D-Link : Unified Services Router - Microsoft Internet Explorer provided by D-Link Australia

https://192.168.10.1/cgi-bin/platform.cgi Certificate Error Bing

Favorites D-Link : Unified Services Router Page Safety Tools

Internet Settings
Wireless Settings
Network Settings
DMZ Setup
VPN Settings
USB Settings
VLAN Settings

IPSEC CONFIGURATION

LOGOUT

This page allows user to add/edit VPN (IPSec) policies which includes Auto and Manual policies.

[Save Settings](#) [Don't Save Settings](#)

General

Policy Name:

Policy Type:

IPSec Mode:

Select Local Gateway:

Remote Endpoint:

Enable NetBIOS:

Enable RollOver:

Enable DHCP:

Local IP:

Local Start IP Address:

Local End IP Address:

Local Subnet Mask:

Remote IP:

Remote Start IP Address:

Remote End IP Address:

Remote Subnet Mask:

Phase1(IKE SA Parameters)

Exchange Mode:

Direction / Type:

Nat Traversal:

On:

Off:

NAT Keep Alive Frequency (in seconds):

Local Identifier Type:

Local Identifier:

Remote Identifier Type:

Use Tunnel mode if you require communication to be secured between networks. Transport mode can be used if the requirement is to have secure communication between 2 hosts. Use Manual Policy parameters if you wish to specify the keys to be used for encryption/decryption (during communication). This is for advanced users who require more control over IPsec tunnel communication. For normal users, Auto Policy would do just fine. Enable Rollover only if the Port Mode is 'Auto-Rollover' in WAN MODE settings page. The active WAN will be used for setting up the tunnel, thus providing an uninterrupted VPN connection. Enable DHCP over IPsec checkbox to allow external users to form a VPN to DSL-1000A. Multiple users can connect as well.

[Home...](#)

Done Internet | Protected Mode: Off 85%

D-Link : Unified Services Router - Microsoft Internet Explorer provided by D-Link Australia

https://192.168.10.1/scg-bin/platform.cgi Certificate Error Bing

Favorites D-Link : Unified Services Router Page Safety Tools

Local Subnet Mask:

Remote IP:

Remote Start IP Address:

Remote End IP Address:

Remote Subnet Mask:

Phase1(IKE SA Parameters)

Exchange Mode:

Direction / Type:

Nat Traversal:

On:

Off:

IAT Keep Alive Frequency (in seconds):

Local Identifier Type:

Local Identifier:

Remote Identifier Type:

Remote Identifier:

Encryption Algorithm:

Authentication Algorithm:

Authentication Method:

Pre-shared key:

Diffie-Hellman (DH) Group:

SA-Lifetime (sec):

Enable Dead Peer Detection:

Detection Period:

Reconnect after failure count:

Extended Authentication:

Authentication Type:

Username:

Password:

Phase2-(Manual Policy Parameters)

Done Internet | Protected Mode: Off 85%

D-Link : Unified Services Router - Microsoft Internet Explorer provided by D-Link Australia

https://192.168.10.1/cgi-bin/platform.cgi Certificate Error Bing

Favorites D-Link : Unified Services Router Page Safety Tools

Phase1(IKE SA Parameters)

Exchange Mode: Main
Direction / Type: Both
Nat Traversal:
On:
Off:
NAT Keep Alive Frequency (in seconds): 20
Local Identifier Type: Local Wan IP
Local Identifier:
Remote Identifier Type:
Remote Identifier:
Encryption Algorithm: 3DES
Authentication Algorithm: SHA-1
Authentication Method: Pre-shared key
Pre-shared key:
Diffie-Hellman (DH) Group: Group 2 (1024 bit)
SA-Lifetime (sec): 28800
Enable Dead Peer Detection:
Detection Period:
Reconnect after failure count:
Extended Authentication: None
Authentication Type: User Database
Username:
Password:

Phase2-(Manual Policy Parameters)

SPI-Incoming:
SPI-Outgoing:
Encryption Algorithm: 3DES
Key Length:
Key-In:
Key-Out:

Done Internet | Protected Mode: Off 85%

D-Link : Unified Services Router - Microsoft Internet Explorer provided by D-Link Australia

https://192.168.10.1/cgi-bin/platform.cgi Certificate Error Bing

D-Link : Unified Services Router

Phase1(IKE SA Parameters)

Exchange Mode: Main

Direction / Type: Both

Nat Traversal:

On:

Off:

NAT Keep Alive Frequency (in seconds): 20

Local Identifier Type: Local Wan IP

Local Identifier:

Remote Identifier Type: Remote Wan IP

Remote Identifier: Remote Wan IP

Encryption Algorithm:

Authentication Algorithm: SHA-1

Authentication Method: Pre-shared key

Pre-shared key:

Diffie-Hellman (DH) Group: Group 2 (1024 bit)

SA-Lifetime (sec): 28800

Enable Dead Peer Detection:

Detection Period:

Reconnect after failure count:

Extended Authentication: None

Authentication Type: User Database

Username:

Password:

Phase2-(Manual Policy Parameters)

SPI-Incoming:

SPI-Outgoing:

Encryption Algorithm: 3DES

Key Length:

Key-In:

Key-Out:

Done Internet | Protected Mode: Off 85%

D-Link : Unified Services Router - Microsoft Internet Explorer provided by D-Link Australia

https://192.168.10.1/cgi-bin/platform.cgi Certificate Error Bing

D-Link : Unified Services Router

Phase1(IKE SA Parameters)

Exchange Mode: Main

Direction / Type: Both

Nat Traversal:

On:

Off:

NAT Keep Alive Frequency (in seconds): 20

Local Identifier Type: Local Wan IP

Local Identifier:

Remote Identifier Type: Remote Wan IP

Remote Identifier:

Encryption Algorithm: 3DES

Authentication Algorithm: DES

Authentication Method:

Pre-shared key:

Diffie-Hellman (DH) Group: Group 2 (1024 bit)

SA-Lifetime (sec): 28800

Enable Dead Peer Detection:

Detection Period:

Reconnect after failure count:

Extended Authentication: None

Authentication Type: User Database

Username:

Password:

Phase2-(Manual Policy Parameters)

SPI-Incoming:

SPI-Outgoing:

Encryption Algorithm: 3DES

Key Length:

Key-In:

Key-Out:

Done Internet | Protected Mode: Off 85%

D-Link : Unified Services Router - Microsoft Internet Explorer provided by D-Link Australia

https://192.168.10.1/scg-bin/platform.cgi Certificate Error Bing

D-Link : Unified Services Router

Phase1(IKE SA Parameters)

Exchange Mode: Main

Direction / Type: Both

Nat Traversal:

On:

Off:

NAT Keep Alive Frequency (in seconds): 20

Local Identifier Type: Local Wan IP

Local Identifier:

Remote Identifier Type: Remote Wan IP

Remote Identifier:

Encryption Algorithm: 3DES

Authentication Algorithm: SHA-1

Authentication Method: SHA-1

Pre-shared key:

Diffie-Hellman (DH) Group: Group 2 (1024 bit)

SA-Lifetime (sec): 28800

Enable Dead Peer Detection:

Detection Period:

Reconnect after failure count:

Extended Authentication: None

Authentication Type: User Database

Username:

Password:

Phase2-(Manual Policy Parameters)

SPI-Incoming:

SPI-Outgoing:

Encryption Algorithm: 3DES

Key Length:

Key-In:

Key-Out:

Done Internet | Protected Mode: Off 85%

D-Link : Unified Services Router - Microsoft Internet Explorer provided by D-Link Australia

https://192.168.10.1/cgi-bin/platform.cgi Certificate Error Bing

Favorites D-Link : Unified Services Router Page Safety Tools

Encryption Algorithm: 3DES
Authentication Algorithm: SHA-1
Authentication Method: Pre-shared key
Pre-shared key: Pre-shared key RSA-Signature
Diffie-Hellman (DH) Group: Group 2 (1024 bit)
SA Lifetime (sec): 28800
Enable Dead Peer Detection:
Detection Period: 10
Reconnect after failure count: 3
Extended Authentication: None
Authentication Type: User Database
Username:
Password:

Phase2-(Manual Policy Parameters)

SPI-Incoming:
SPI-Outgoing:
Encryption Algorithm: 3DES
Key Length:
Key-In:
Key-Out:
Integrity Algorithm: SHA-1
Key-In:
Key-Out:

Phase2-(Auto Policy Parameters)

SA Lifetime: Seconds
Encryption Algorithm: 3DES
Key Length:
Integrity Algorithm: SHA-1
PFS Key Group: DH Group 1 (768 bit)

UNIFIED SERVICES ROUTER

Done Internet | Protected Mode: Off 85%

D-Link : Unified Services Router - Microsoft Internet Explorer provided by D-Link Australia

https://192.168.10.1/cgi-bin/platform.cgi Certificate Error Bing

Favorites D-Link : Unified Services Router Page Safety Tools

Encryption Algorithm: 3DES
Authentication Algorithm: SHA-1
Authentication Method: Pre-shared key
Pre-shared key:
Diffie-Hellman (DH) Group: Group 2 (1024 bit)
SA Lifetime (sec): Group 1 (768 bit)
Group 2 (1024 bit)
Group 5 (1536 bit)
Group 14 (2048 bit)
Group 15 (3072 bit)
Group 16 (4096 bit)
Group 17 (6144 bit)
Group 18 (8192 bit)
Enable Dead Peer Detection:
Detection Period:
Reconnect after failure count:
Extended Authentication: None
Authentication Type: User Database
Username:
Password:

Phase2-(Manual Policy Parameters)

SPI-Incoming:
SPI-Outgoing:
Encryption Algorithm: 3DES
Key Length:
Key-In:
Key-Out:
Integrity Algorithm: SHA-1
Key-In:
Key-Out:

Phase2-(Auto Policy Parameters)

SA Lifetime: Seconds
Encryption Algorithm: 3DES
Key Length:
Integrity Algorithm: SHA-1
PFS Key Group: DH Group 1 (768 bit)

UNIFIED SERVICES ROUTER

Done Internet | Protected Mode: Off 85%

D-Link : Unified Services Router - Microsoft Internet Explorer provided by D-Link Australia

https://192.168.10.1/cgi-bin/platform.cgi Certificate Error Bing

D-Link : Unified Services Router

Page Safety Tools

Encryption Algorithm: 3DES
Authentication Algorithm: SHA-1
Authentication Method: Pre-shared key
Pre-shared key:
Diffie-Hellman (DH) Group: Group 2 (1024 bit)
SA Lifetime (sec): 28800
Enable Dead Peer Detection:
Detection Period:
Reconnect after failure count:
Extended Authentication: None
Authentication Type: IPsec Host
Username:
Password:

Phase2-(Manual Policy Parameters)

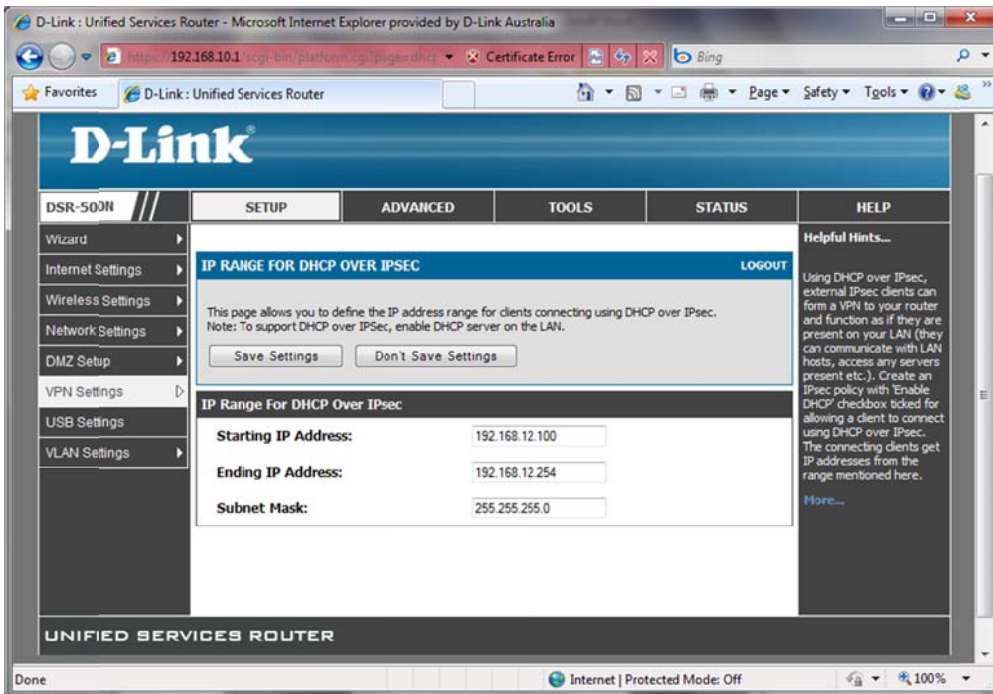
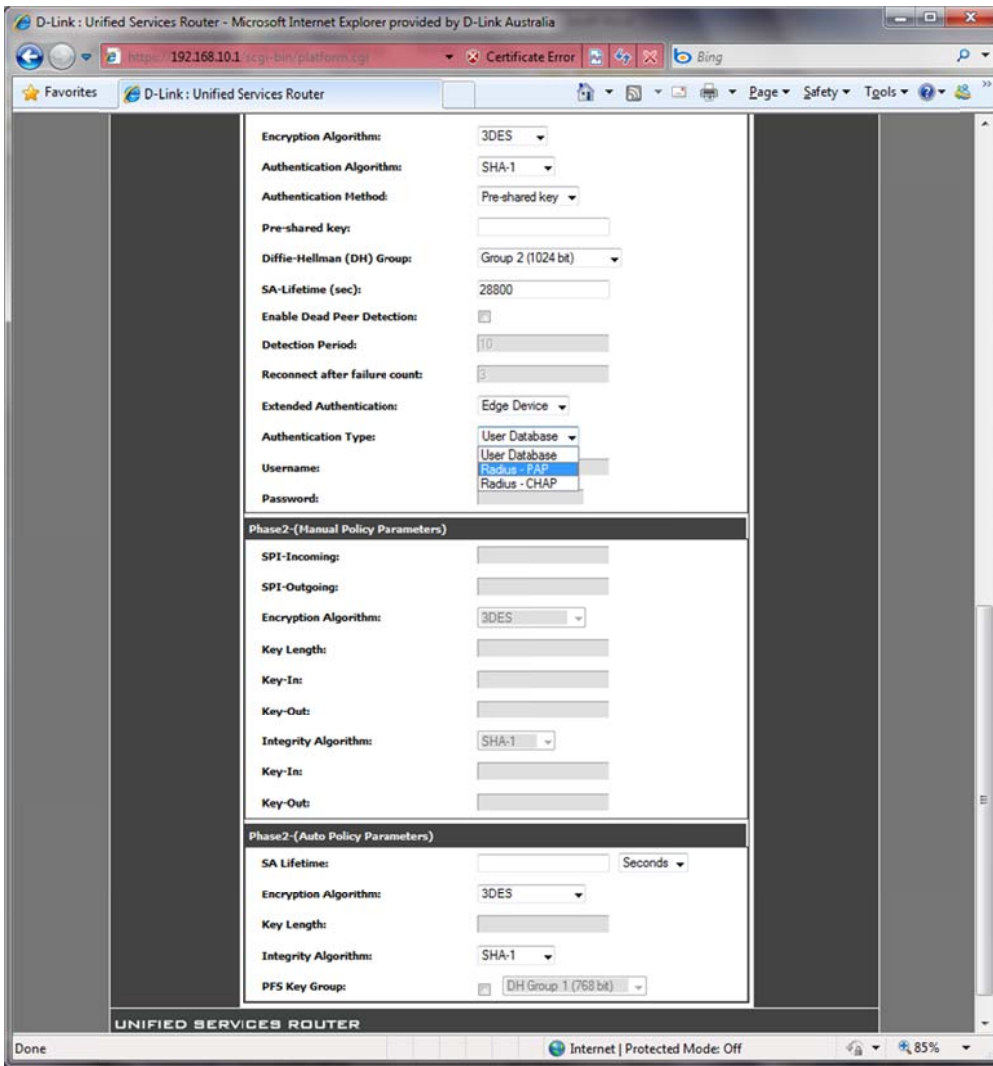
SPI-Incoming:
SPI-Outgoing:
Encryption Algorithm: 3DES
Key Length:
Key-In:
Key-Out:
Integrity Algorithm: SHA-1
Key-In:
Key-Out:

Phase2-(Auto Policy Parameters)

SA Lifetime: Seconds
Encryption Algorithm: 3DES
Key Length:
Integrity Algorithm: SHA-1
PFS Key Group: DH Group 1 (768 bit)

UNIFIED SERVICES ROUTER

Done Internet | Protected Mode: Off 85%



D-Link : Unified Services Router - Microsoft Internet Explorer provided by D-Link Australia

Product Page: DSR-500N Hardware Version: A1 Firmware Version: 1.02B11

D-Link

DSR-500N	SETUP	ADVANCED	TOOLS	STATUS	HELP
Wizard	<h2>PPTP SERVER</h2> <p>PPTP allows an external user to connect to your router through the internet. This section allows you to enable/disable PPTP server and define a range of IP addresses for clients connecting to your router. The connected clients can function as if they are on your LAN (they can communicate with LAN hosts, access any servers present etc.)</p> <p>Ending IP Address: <input type="text"/></p>				<p>Helpful Hints...</p> <p>A PPTP VPN can be established through this router. If the PPTP ISP is configured, then LAN hosts on this router can connect to the PPTP server. The router acts as a broker device to allow the ISP's PPTP server to create a TCP control connection between the LAN VPN client and the VPN server. TCP port 1723 is opened for this VPN connection. The PPTP server will indicate the range of IP addresses to assign to LAN side VPN clients.</p>
Internet Settings	<p>LOGOUT</p>				
Wireless Settings	<p>Don't Save Settings</p>				
Network Settings	<p>IPsec</p>				
DMZ Setup	<p>PPTP Server</p>				
VPN Settings	<p>PPTP Active Users</p>				
USB Settings	<p>addresses that is allocated to PPTP Clients</p>				
VLAN Settings	<p>SSL VPN Server</p>				
	<p>SSL VPN Client</p>				

https://192.168.10.1/scgi-bin/platform.cgi?page=pptpServer.htm Internet | Protected Mode: Off

D-Link : Unified Services Router - Microsoft Internet Explorer provided by D-Link Australia

Product Page: DSR-500N Hardware Version: A1 Firmware Version: 1.02B11

D-Link

DSR-500N	SETUP	ADVANCED	TOOLS	STATUS	HELP
Wizard	<h2>PPTP SERVER</h2> <p>PPTP allows an external user to connect to your router through the internet. This section allows you to enable/disable PPTP server and define a range of IP addresses for clients connecting to your router. The connected clients can function as if they are on your LAN (they can communicate with LAN hosts, access any servers present etc.)</p> <p>Starting IP Address: <input type="text"/></p> <p>Ending IP Address: <input type="text"/></p>				<p>Helpful Hints...</p> <p>A PPTP VPN can be established through this router. If the PPTP ISP is configured, then LAN hosts on this router can connect to the PPTP server. The router acts as a broker device to allow the ISP's PPTP server to create a TCP control connection between the LAN VPN client and the VPN server. TCP port 1723 is opened for this VPN connection. The PPTP server will indicate the range of IP addresses to assign to LAN side VPN clients.</p>
Internet Settings	<p>Save Settings</p> <p>Don't Save Settings</p>				
Wireless Settings	<p>PPTP Server Configuration</p>				
Network Settings	<p>Enable PPTP Server? <input type="checkbox"/></p>				
DMZ Setup	<p>Enter the range of IP addresses that is allocated to PPTP Clients</p>				
VPN Settings	<p>Starting IP Address: <input type="text"/></p>				
USB Settings	<p>Ending IP Address: <input type="text"/></p>				
VLAN Settings					

Internet | Protected Mode: Off

D-Link : Unified Services Router - Microsoft Internet Explorer provided by D-Link Australia

Product Page: DSR-500N Hardware Version: A1 Firmware Version: 1.02B11

D-Link

DSR-500N // SETUP ADVANCED TOOLS STATUS HELP

Internet Settings | **ACTIVE USERS** | LOGOUT

This page displays all the users currently connected to your PPTP server.

List of PPTP Active Users

User Name	Remote IP	PPTP IP

Helpful Hints... Active PPTP tunnels connections are listed here, as LAN VPN clients are active PPTP users.

Internet | Protected Mode: Off

D-Link : Unified Services Router - Microsoft Internet Explorer provided by D-Link Australia

Product Page: DSR-500N Hardware Version: A1 Firmware Version: 1.02B11

D-Link

DSR-500N // SETUP ADVANCED TOOLS STATUS HELP

VPN Settings | **L2TP SERVER** | LOGOUT

L2TP allows an external user to connect to your router through the internet, forming a VPN. This section allows you to enable/disable L2TP server and define a range of IP addresses for clients connecting to your router. The connected clients can function as if they are on your LAN (they can communicate with LAN hosts, access any servers present etc.)

Ending IP Address:

Helpful Hints... A L2TP VPN can be established through this router. If the L2TP ISP is configured, then LAN hosts on this router can connect directly to the ISP's L2TP server. The router acts as a broker device to allow the ISP's L2TP server to create a tunnel between the LAN VPN client and the VPN server. The L2TP server will indicate the range of IP addresses to assign to LAN side VPN clients.

https://192.168.10.1/scgi-bin/platform.cgi?page=l2tpServer.html

Internet | Protected Mode: Off

D-Link : Unified Services Router - Microsoft Internet Explorer provided by D-Link Australia

Product Page: DSR-500N Hardware Version: A1 Firmware Version: 1.02B11

D-Link

DSR-500N // SETUP ADVANCED TOOLS STATUS HELP

VPN Settings | **L2TP SERVER** | LOGOUT

L2TP allows an external user to connect to your router through the internet, forming a VPN. This section allows you to enable/disable L2TP server and define a range of IP addresses for clients connecting to your router. The connected clients can function as if they are on your LAN (they can communicate with LAN hosts, access any servers present etc.)

Save Settings | Don't Save Settings

L2TP Server Configuration

Enable L2TP Server?

Enter the range of IP addresses that is allocated to L2TP Clients

Starting IP Address:

Ending IP Address:

Helpful Hints... A L2TP VPN can be established through this router. If the L2TP ISP is configured, then LAN hosts on this router can connect directly to the ISP's L2TP server. The router acts as a broker device to allow the ISP's L2TP server to create a tunnel between the LAN VPN client and the VPN server. The L2TP server will indicate the range of IP addresses to assign to LAN side VPN clients.

Done

Internet | Protected Mode: Off

D-Link : Unified Services Router - Microsoft Internet Explorer provided by D-Link Australia

Product Page: DSR-500N Hardware Version: A1 Firmware Version: 1.02B11

D-Link

DSR-500N // SETUP ADVANCED TOOLS STATUS HELP

Wizard Internet Settings Wireless Settings Network Settings DMZ Setup VPN Settings USB Settings VLAN Settings

L2TP SERVER LOGOUT

L2TP allows an external user to connect to your router through the internet, forming a VPN. This section allows you to enable/disable L2TP server and define a range of IP addresses for clients connecting to your router. The connected clients can function as if they are on your LAN (they can communicate with LAN hosts, access any servers present etc.)

Don't Save Settings

IPsec PPTP L2TP

SSL VPN Server SSL VPN Client

Portal Layouts SSL VPN Policies Resources Port Forwarding

Helpful Hints... A L2TP VPN can be established through this router. If the L2TP ISP is configured, then LAN hosts on this router can connect directly to the ISP's L2TP server. The router acts as a broker device to allow the ISP's L2TP server to create a tunnel between the LAN VPN client and the VPN server. The L2TP server will indicate the range of IP addresses to assign to LAN side VPN clients.

Ending IP Address

https://192.168.10.1/scgi-bin/platform.cgi?page=l2tpServer.htm# Internet | Protected Mode: Off

D-Link : Unified Services Router - Microsoft Internet Explorer provided by D-Link Australia

Product Page: DSR-500N Hardware Version: A1 Firmware Version: 1.02B11

D-Link

DSR-500N // SETUP ADVANCED TOOLS STATUS HELP

Wizard Internet Settings Wireless Settings Network Settings DMZ Setup VPN Settings USB Settings VLAN Settings

Please Enable [Remote Management](#) to activate SSL VPN Configurations.

PORTAL LAYOUTS LOGOUT

The table lists the SSL portal layouts configured for this device and allows several operations on the portal layouts.

List of Layouts

<input type="checkbox"/>	Layout Name	Use Count	Portal URL
<input type="checkbox"/>	SSLVPN*	1	https://0.0.0.0/portal/SSLVPN

Edit Delete Set Default Add

Helpful Hints... The router allows you to create a custom page for remote SSL VPN users that is presented upon authentication. Login instructions, available services, and other usage details that are specific to a domain are useful to present on the authentication portal. Portals are assigned to the user domain.

Internet | Protected Mode: Off

D-Link : Unified Services Router - Microsoft Internet Explorer provided by D-Link Australia

Product Page: DSR-500N Hardware Version: A1 Firmware Version: 1.02B11

D-Link

DSR-500N // SETUP ADVANCED TOOLS STATUS HELP

Wizard Internet Settings Wireless Settings Network Settings DMZ Setup VPN Settings USB Settings VLAN Settings

PORTAL LAYOUT CONFIGURATION LOGOUT

This page allows you to add a new portal layout or edit the configuration of an existing portal layout. The details will then be displayed in the List of Portal Layouts table on the SSL VPN Server > Portal Layouts page under the VPN menu.

Save Settings Don't Save Settings

Portal Layout and Theme Name

Portal Layout Name:

Portal Site Title (Optional):

Banner Title (Optional):

Banner Message (Optional):

Display banner message on login page:

HTTP meta tags for cache control (recommended):

ActiveX web cache cleaner:

SSL VPN Portal Pages to Display

VPN Tunnel page:

Port Forwarding:

Helpful Hints...
When remote users want to access the private network through an SSL tunnel (either using the Port Forwarding or VPN tunnel service), they login through the Client Portal. This portal provides the authentication fields to provide the appropriate access levels and privileges as determined by the router.
More...

Done Internet | Protected Mode: Off 100%

D-Link : Unified Services Router - Microsoft Internet Explorer provided by D-Link Australia

Product Page: DSR-500N Hardware Version: A1 Firmware Version: 1.02B11

D-Link

DSR-500N // SETUP ADVANCED TOOLS STATUS HELP

Wizard Internet Settings Wireless Settings Network Settings DMZ Setup VPN Settings USB Settings VLAN Settings

SSL VPN POLICIES LOGOUT

Policies are useful to permit or deny access to specific network resources, IP addresses, or IP networks. They may be defined at the user, group or global level. By Default, a global PERMIT policy (not displayed) was already configured over all addresses and over all services/ports.

Query

View List of SSL VPN Policies For: Global

Available Groups: SSLVPN

Available Users: admin

Display

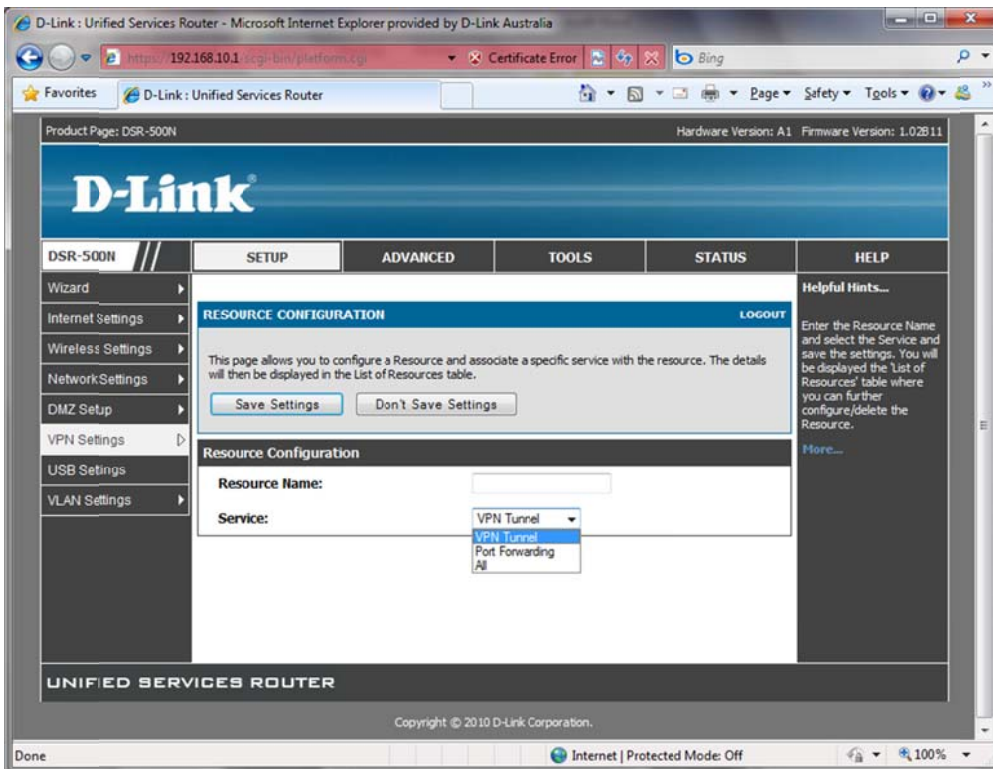
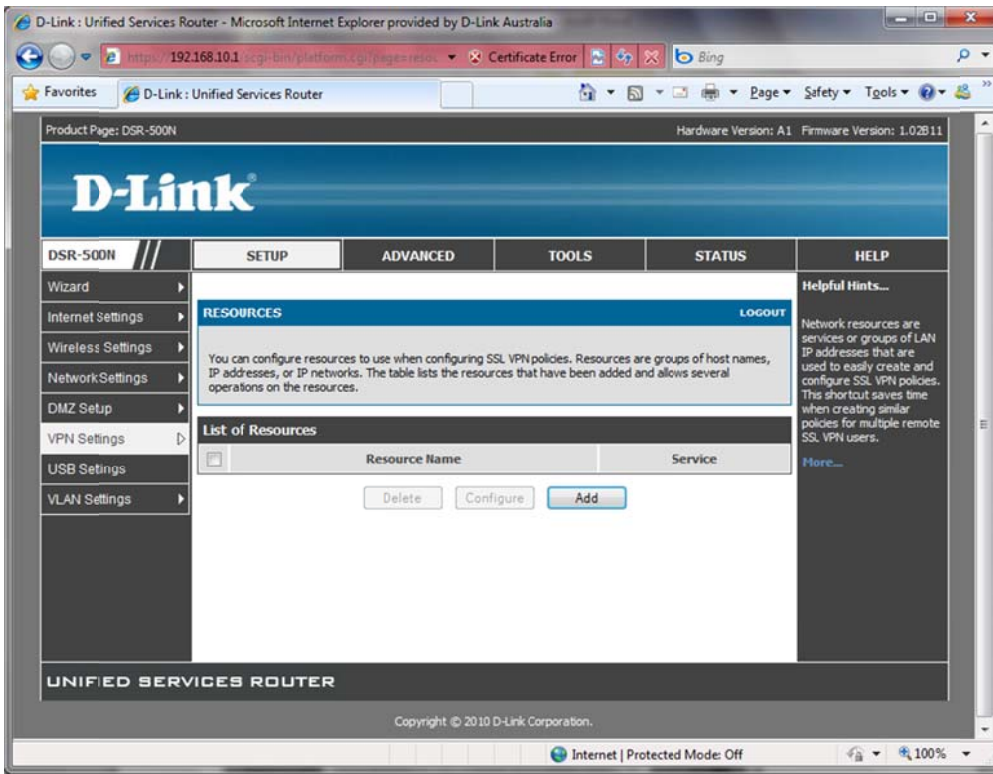
List of SSL VPN Policies

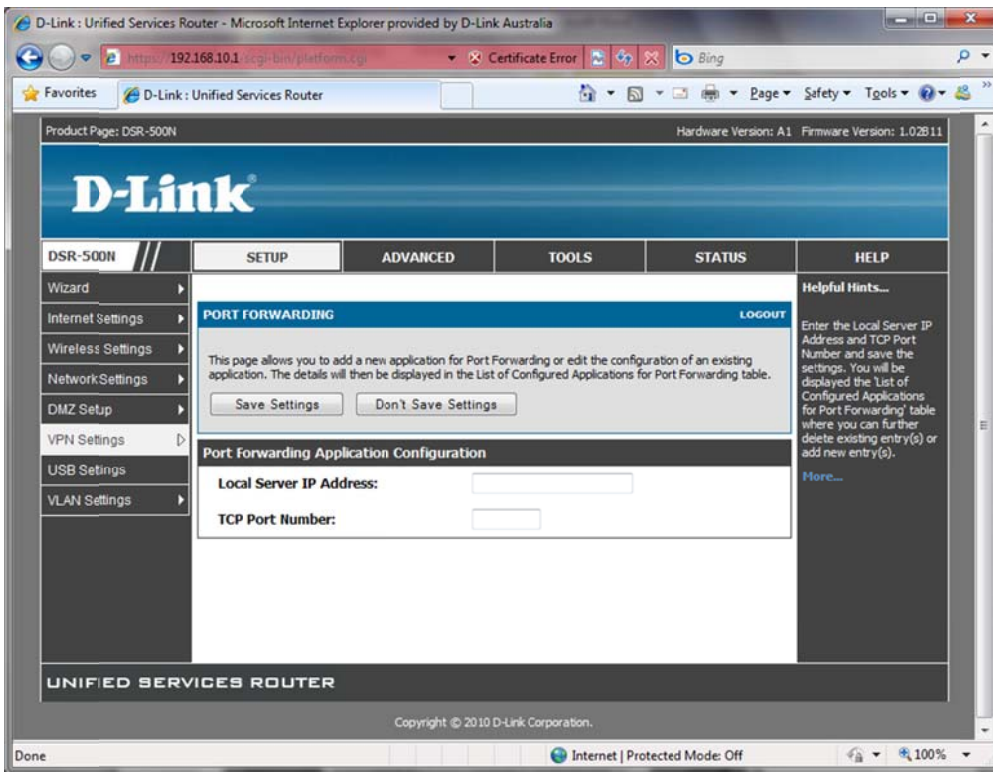
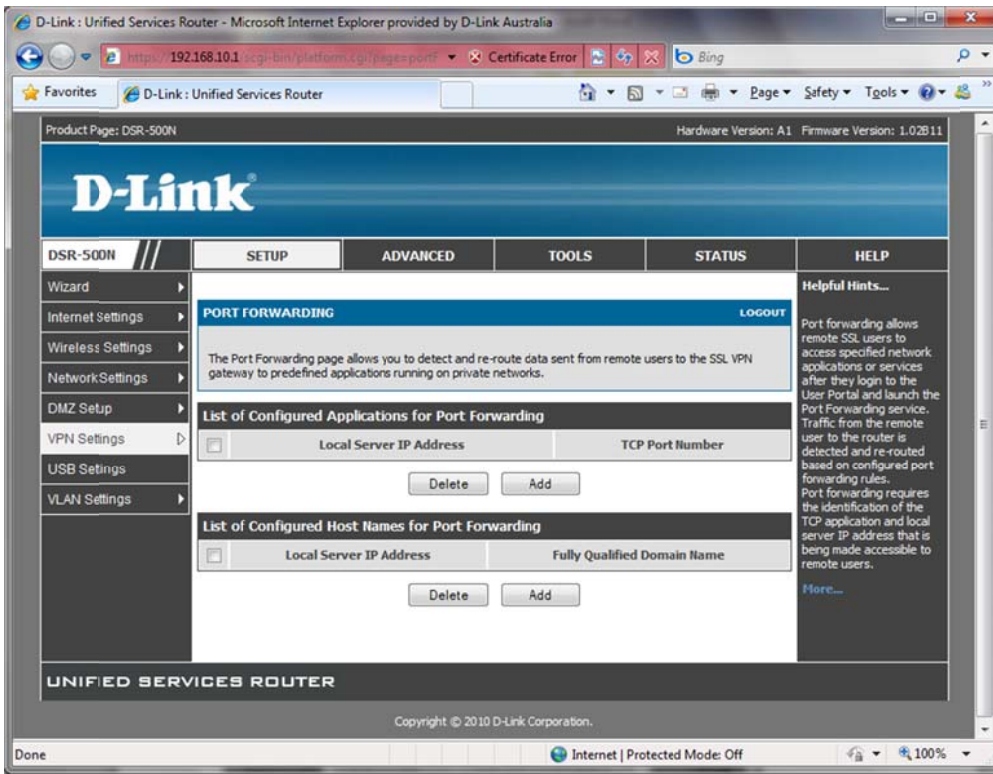
<input type="checkbox"/>	Name	Service	Destination	Permission
<input type="button" value="Edit"/> <input type="button" value="Delete"/> <input type="button" value="Add"/>				

Helpful Hints...
SSL VPN Policies can be created on a Global, Group, or User level. These policies can be applied to a specific network resource, IP address or ranges on the LAN, or to different SSL VPN services supported by the router.
A more specific policy takes precedence over a generic policy when both are applied to the same user/group/global domain. I.e. a policy for a specific IP address takes precedence over a policy for a range of addresses containing the IP address already referenced.
More...

UNIFIED SERVICES ROUTER

Internet | Protected Mode: Off 100%





D-Link : Unified Services Router - Microsoft Internet Explorer provided by D-Link Australia

Product Page: DSR-500N Hardware Version: A1 Firmware Version: 1.02B11

D-Link

DSR-500N	SETUP	ADVANCED	TOOLS	STATUS	HELP
----------	-------	----------	-------	--------	------

Wizard
Internet Settings
Wireless Settings
Network Settings
DMZ Setup
VPN Settings
USB Settings
VLAN Settings

SSL VPN CLIENT

LOGOUT

An SSL VPN tunnel client provides a point-to-point connection between the browser-side machine and this device. When a SSL VPN client is launched from the user portal, a "network adapter" with an IP address, DNS and WINS settings is automatically created, which allows local applications to talk to services on the private network without any special network configuration on the remote SSL VPN client machine.

Support:

Client Address Range: 192.168.251.1 - 192.168.251.254

LCP Timeout: 60 (Seconds)

Helpful Hints...
An SSL VPN tunnel client provides a point-to-point connection between the browser-side machine and this router. When a SSL VPN client is launched from the user portal, a "network adapter" with an IP address from the corporate subnet, DNS and WINS settings is automatically created. The IP addresses of the client's network interfaces (Ethernet, Wireless, etc.) cannot be identical to the router's IP address or a server on the corporate LAN that is being accessed through the SSL VPN tunnel.

Internet | Protected Mode: Off

D-Link : Unified Services Router - Microsoft Internet Explorer provided by D-Link Australia

Product Page: DSR-500N Hardware Version: A1 Firmware Version: 1.02B11

D-Link

DSR-500N	SETUP	ADVANCED	TOOLS	STATUS	HELP
----------	-------	----------	-------	--------	------

Wizard
Internet Settings
Wireless Settings
Network Settings
DMZ Setup
VPN Settings
USB Settings
VLAN Settings

SSL VPN CLIENT

LOGOUT

An SSL VPN tunnel client provides a point-to-point connection between the browser-side machine and this device. When a SSL VPN client is launched from the user portal, a "network adapter" with an IP address, DNS and WINS settings is automatically created, which allows local applications to talk to services on the private network without any special network configuration on the remote SSL VPN client machine.

Save Settings Don't Save Settings

Client IP Address Range

Enable Split Tunnel Support:

DNS Suffix (Optional):

Primary DNS Server (Optional):

Secondary DNS Server (Optional):

Client Address Range Begin: 192.168.251.1

Client Address Range End: 192.168.251.254

LCP Timeout: 60 (Seconds)

Helpful Hints...
An SSL VPN tunnel client provides a point-to-point connection between the browser-side machine and this router. When a SSL VPN client is launched from the user portal, a "network adapter" with an IP address from the corporate subnet, DNS and WINS settings is automatically created. The IP addresses of the client's network interfaces (Ethernet, Wireless, etc.) cannot be identical to the router's IP address or a server on the corporate LAN that is being accessed through the SSL VPN tunnel.

Done

Internet | Protected Mode: Off

D-Link : Unified Services Router - Microsoft Internet Explorer provided by D-Link Australia

Product Page: DSR-500N Hardware Version: A1 Firmware Version: 1.02B11

D-Link

DSR-500N // SETUP ADVANCED TOOLS STATUS HELP

Wizard Internet Settings Wireless Settings Network Settings DMZ Setup VPN Settings USB Settings VLAN Settings

Enable Split Tunnel Support to configure Client Routes

CONFIGURED CLIENT ROUTES

LOGOUT

The Configured Client Routes entries are the routing entries which will be added by the SSL VPN Client such that only traffic to these destination addresses is redirected through the SSL VPN tunnels, and all other traffic is redirected using the hosts (SSL VPN Clients) native network interface. The table shows the destination routes that will be configured on the SSL VPN client. For example if the SSL VPN Client wishes to access the LAN network then in SPLIT Tunnel mode you should add the LAN subnet as the destination subnet on this device.

Destination Network	Subnet Mask
<input type="checkbox"/>	

Delete Add

UNIFIED SERVICES ROUTER

Copyright © 2010 D-Link Corporation.

Done Internet | Protected Mode: Off 100%

SSLVPN - Microsoft Internet Explorer provided by D-Link Australia

Product Page: DSR-500N Hardware Version: A1 Firmware Version: 1.02B11

D-Link

Welcome to the 'SSLVPN' client portal.

DSR-500N // Portal Information VPN Tunnel Port Forwarding Change Password HELP


PORTAL INFO

LOG OUT


Supported Features:

This client portal provides remote access to the corporate network through the following features.

SSL VPN Tunnel:

 'SSL VPN Tunnel' facilitates in creating an encrypted tunnel to the corporate network.

SSL Port Forwarding:

 'Port Forwarding' facilitates creating an encrypted tunnel for pre-defined applications on the corporate network.

Note:

1. 'Change Password' section is available ONLY for users belonging to local database.
2. Please contact your administrator in case any/all of the above mentioned features are NOT enabled.
3. Java, Javascript, Active-X controls MUST be Enabled/Allowed in your browser settings.

UNIFIED SERVICES ROUTER

Copyright © 2010 D-Link Corporation.

Done Internet | Protected Mode: Off 100%

SSLVPN - Microsoft Internet Explorer provided by D-Link Australia

https://192.168.10.1/scg/bin/userPortal/vpnclient/ Certificate Error Bing

Product Page: DSR-500N Hardware Version: A1 Firmware Version: 1.02B11

D-Link


Welcome to the 'SSLVPN' client portal.

DSR-500N // Portal Information VPN Tunnel Port Forwarding Change Password HELP

VPN TUNNEL LOG OUT

Supported Features:
This page allows user to establish a SSL VPN tunnel client which provides a point-to-point connection between the remote client machine and the gateway of the corporate network.

SSL VPN Tunnel Client Installer / Launcher



Click the Icon to connect to the remote network. Keep your browser open to maintain the connection.

Note:
* If you reload your browser, SSL VPN Tunnel Client will disconnect and then reconnect to the remote network.
* Installation/Uninstallation can be done only as "root".

Recommendations:
* Always follow this sequence: Uninstall any active clients, logout and close the browser. If recommended steps are followed, it will make the connection safer, easier to maintain and avoid possible errors.

UNIFIED SERVICES ROUTER

Copyright © 2010 D-Link Corporation.

Done Internet | Protected Mode: Off 100%

SSLVPN - Microsoft Internet Explorer provided by D-Link Australia

https://192.168.10.1/scg/bin/userPortal/portforw/ Certificate Error Bing

Product Page: DSR-500N Hardware Version: A1 Firmware Version: 1.02B11

D-Link


Welcome to the 'SSLVPN' client portal.

DSR-500N // Portal Information VPN Tunnel Port Forwarding Change Password HELP

PORT FORWARDING LOG OUT

Supported Features:
This page allows user to establish a Port Forwarding tunnel which is a light weight tunnel with port based encryption.

SSL VPN Port Forwarding Client Installer / Launcher:



Click the Icon to connect to the remote servers.

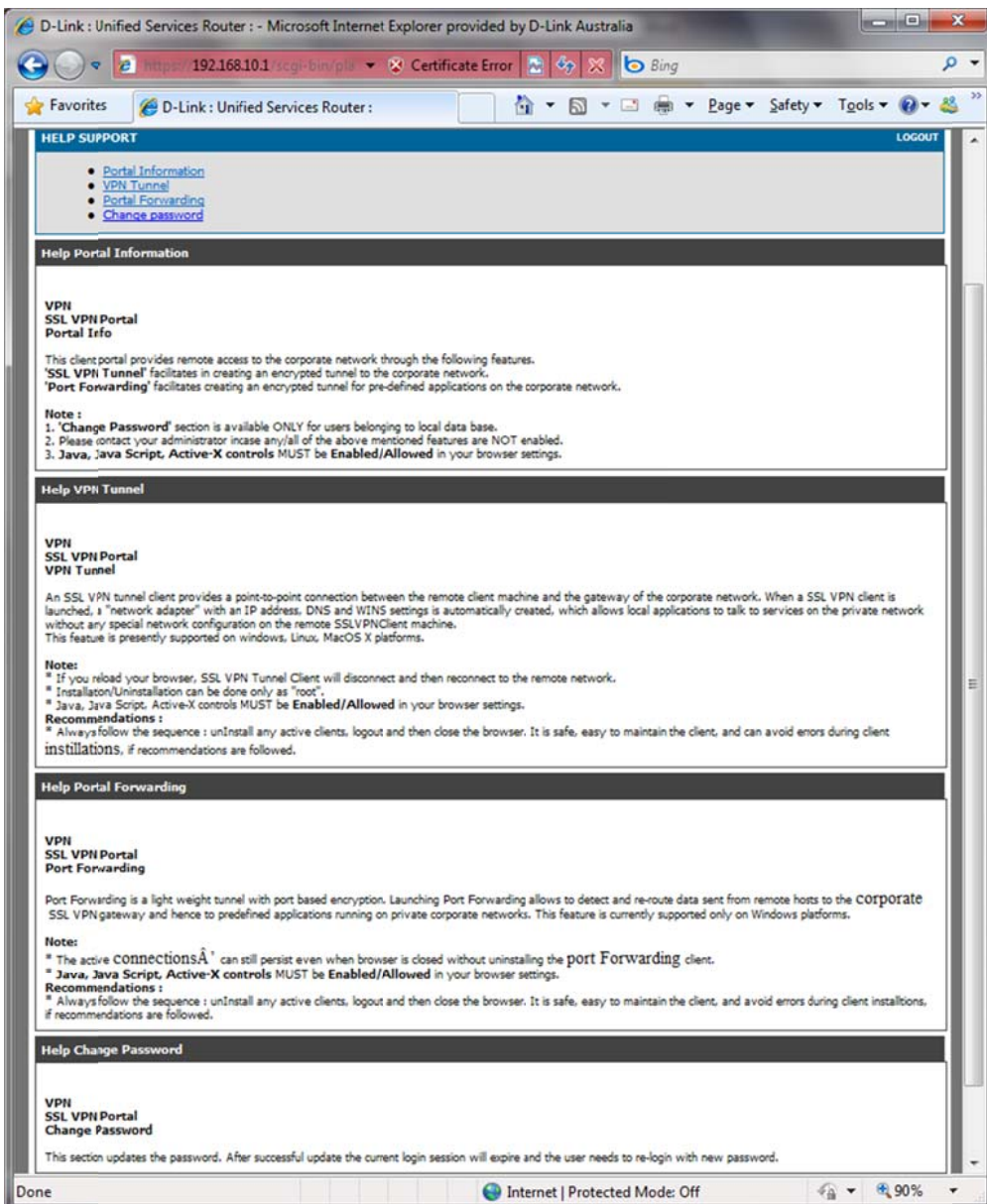
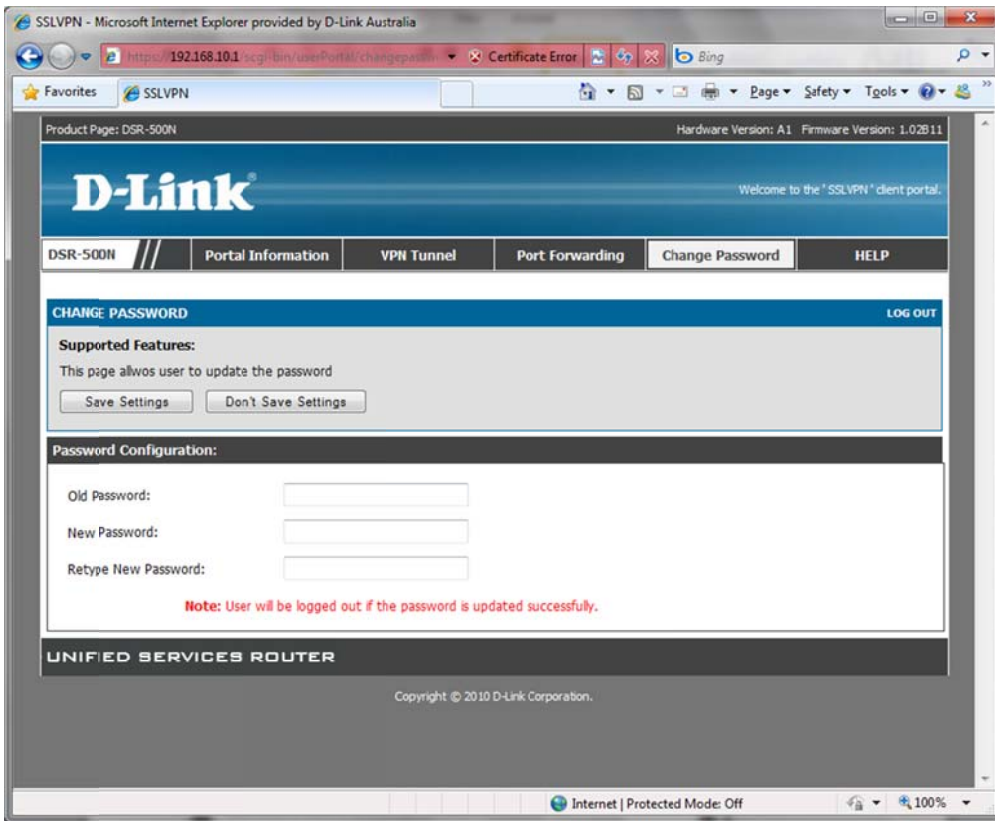
Note:
* The active connections can still persist even when browser is closed without uninstalling the Port Forwarding client

Recommendations:
* Always follow this sequence: Uninstall any active clients, logout and close the browser. If recommended steps are followed, it will make the connection safer, easier to maintain and avoid possible errors.

UNIFIED SERVICES ROUTER

Copyright © 2010 D-Link Corporation.

Done Internet | Protected Mode: Off 100%



D-Link : Unified Services Router - Microsoft Internet Explorer provided by D-Link Australia

Product Page: DSR-500N Hardware Version: A1 Firmware Version: 1.02B11

D-Link

DSR-500N	SETUP	ADVANCED	TOOLS	STATUS	HELP
<ul style="list-style-type: none"> Wizard Internet Settings Wireless Settings NetworkSettings DMZ Setup VPN Settings USB Settings VLAN Settings 	<p>USB SETTINGS LOGOUT</p> <p>This page displays information about the USB devices connected to the USB port(s). This page also allows user to do certain configurations on USB devices, such as safely unmounting the devices.</p> <p>USB: Storage Device Settings</p> <div style="display: flex; align-items: center;"> <div> <p>Device Vendor: 3SYSTEM</p> <p>Device Model: USB_FLASH_DISK</p> <p>Device Type: storage</p> <p>Mount Status: Mounted</p> <p><input type="button" value="Safely Remove"/></p> </div> </div>	<p>Helpful Hints...</p> <p>Do you know that this page will update dynamically to show the status of the USB devices connected to the router. It is also recommended to use the 'Safely Remove' button to safely remove the hardware before pulling it out of the router.</p> <p>More...</p>			

UNIFIED SERVICES ROUTER

Internet | Protected Mode: Off

D-Link : Unified Services Router - Microsoft Internet Explorer provided by D-Link Australia

Product Page: DSR-500N Hardware Version: A1 Firmware Version: 1.02B11

D-Link

DSR-500N	SETUP	ADVANCED	TOOLS	STATUS	HELP
<ul style="list-style-type: none"> Wizard Internet Settings Wireless Settings NetworkSettings DMZ Setup VPN Settings USB Settings VLAN Settings 	<p>VLAN CONFIGURATION LOGOUT</p> <p>This page allows user to enable/disable VLAN functionality on the router.</p> <p><input type="button" value="Save Settings"/> <input type="button" value="Don't Save Settings"/></p> <p>VLAN CONFIGURATION</p> <p>Enable VLAN <input checked="" type="checkbox"/></p>	<p>Helpful Hints...</p> <p>The router supports virtual network isolation on the LAN with the use of VLANs. LAN devices can be configured to communicate in a subnetwork defined by VLAN identifiers.</p> <p>More...</p>			
	<ul style="list-style-type: none"> VLAN Configuration <ul style="list-style-type: none"> Port VLAN Multiple VLAN Subnets Available VLANs 				

UNIFIED SERVICES ROUTER

https://192.168.10.1/scgi-bin/platform.cgi?page=vlan.htm Internet | Protected Mode: Off

D-Link : Unified Services Router - Microsoft Internet Explorer provided by D-Link Australia

Product Page: DSR-500N Hardware Version: A1 Firmware Version: 1.02B11

D-Link

DSR-500N // SETUP ADVANCED TOOLS STATUS HELP

Wizard Internet Settings Wireless Settings Network Settings DMZ Setup VPN Settings USB Settings VLAN Settings

PORT VLANS

LOGOUT

This page allows user to configure the port VLANs. A user can choose ports and can add them into a VLAN.

Port VLANs

<input type="checkbox"/>	Port Name	Mode	PVID	VLAN Membership
<input type="checkbox"/>	Port 1	Access	1	1
<input type="checkbox"/>	Port 2	Access	1	1
<input type="checkbox"/>	Port 3	Access	1	1
<input type="checkbox"/>	Port 4	Access	1	1

Edit

Wireless VLANs

<input type="checkbox"/>	SSID	Mode	PVID	VLAN Membership
<input type="checkbox"/>	DSR-500N-1	Access	1	1
<input type="checkbox"/>	DSR-500N-2	Access	1	1

Edit

UNIFIED SERVICES ROUTER

Done Internet | Protected Mode: Off 100%

D-Link : Unified Services Router - Microsoft Internet Explorer provided by D-Link Australia

Product Page: DSR-500N Hardware Version: A1 Firmware Version: 1.02B11

D-Link

DSR-500N // SETUP ADVANCED TOOLS STATUS HELP

Wizard Internet Settings Wireless Settings Network Settings DMZ Setup VPN Settings USB Settings VLAN Settings

VLAN CONFIGURATION

LOGOUT

This page allows user to configure the port VLAN.

VLAN Configuration

Port Name: Port 2

Mode: (Access, General, Trunk)

PVID:

Apply Cancel

VLAN Membership Configuration

VLAN Membership: 1

Apply Cancel

UNIFIED SERVICES ROUTER

Copyright © 2010 D-Link Corporation.

Done Internet | Protected Mode: Off 100%

D-Link : Unified Services Router - Microsoft Internet Explorer provided by D-Link Australia

Product Page: DSR-500N Hardware Version: A1 Firmware Version: 1.02B11

D-Link

DSR-500N // SETUP ADVANCED TOOLS STATUS HELP

Wizard Internet Settings Wireless Settings Network Settings DMZ Setup VPN Settings USB Settings VLAN Settings

MULTI VLAN SUBNETS

LOGOUT

This page shows a list of available multi-vlan subnets. User can even edit the multi-vlans from this page.

MULTI VLAN SUBNET List

	Vlan ID	IP Address	Subnet Mask
<input type="checkbox"/>	1	192.168.10.1	255.255.255.0

UNIFIED SERVICES ROUTER

Copyright © 2010 D-Link Corporation.

Done Internet | Protected Mode: Off 100%

D-Link : Unified Services Router - Microsoft Internet Explorer provided by D-Link Australia

Product Page: DSR-500N Hardware Version: A1 Firmware Version: 1.02B11

D-Link

DSR-500N // SETUP ADVANCED TOOLS STATUS HELP

Wizard Internet Settings Wireless Settings Network Settings DMZ Setup VPN Settings USB Settings VLAN Settings

MULTI VLAN SUBNET CONFIG

LOGOUT

This page shows the list of available multiple VLAN subnets.

MULTI VLAN SUBNET

Vlan ID: 1

IP Address:

Subnet Mask:

DHCP

DHCP Mode:

Domain Name:

Starting IP Address:

Ending IP Address:

Primary DNS Server (Optional):

Secondary DNS Server (Optional):

Lease Time: (Hours)

Relay Gateway:

LAN Proxy

Enable DNS Proxy:

UNIFIED SERVICES ROUTER

Done Internet | Protected Mode: Off 100%

D-Link : Unified Services Router - Microsoft Internet Explorer provided by D-Link Australia

Product Page: DSR-500N Hardware Version: A1 Firmware Version: 1.02B11

D-Link

DSR-500N // SETUP ADVANCED TOOLS STATUS HELP

Wizard Internet Settings Wireless Settings NetworkSettings DMZ Setup VPN Settings USB Settings VLAN Settings

AVAILABLE VLANS

LOGOUT

This page shows a list of available VLANs which a user can edit or delete. A user can add a new VLAN from this page as well.

List of available VLANs	
<input type="checkbox"/>	Name
<input type="checkbox"/>	Default
	ID
	1

Edit Delete Add

Helpful Hints...
A VLAN membership must be configured in order to be assigned to a port. A VLAN membership entry consists of a VLAN identifier and the numerical VLAN ID which is assigned to the VLAN membership. The VLAN ID value can be any number from 2 to 4093.
More...

Done Internet | Protected Mode: Off 100%

D-Link : Unified Services Router - Microsoft Internet Explorer provided by D-Link Australia

Product Page: DSR-500N Hardware Version: A1 Firmware Version: 1.02B11

D-Link

DSR-500N // SETUP ADVANCED TOOLS STATUS HELP

Wizard Internet Settings Wireless Settings NetworkSettings DMZ Setup VPN Settings USB Settings VLAN Settings

AVAILABLE VLANS

LOGOUT

This page allows user to enable/disable VLAN support on the LAN.

Save Settings Don't Save Settings

VLAN Configuration

Name:

Id:

Inter VLAN Routing Enable:

Helpful Hints...
Enter Name and ID and save the settings. Make sure that the ID provided is unique. Once the settings are saved, you will be shown the List of Available VLANs where you can further add new VLAN(s) or edit/delete existing VLAN(s).
More...

UNIFIED SERVICES ROUTER

Copyright © 2010 D-Link Corporation.

Done Internet | Protected Mode: Off 100%

D-Link : Unified Services Router - Microsoft Internet Explorer provided by D-Link Australia

Product Page: DSR-500N Hardware Version: A1 Firmware Version: 1.02B11

D-Link

DSR-500N // SETUP ADVANCED TOOLS STATUS HELP

Application Rules Application Rules **LOGOUT**

Website Filter Application Rules Status

Firewall Settings

Wireless Settings

Advanced Network

Routing

Certificates

Users

IP/MAC Binding

IPv6

Radius Settings

Power Saving

Helpful Hints... Application rules are also referred to as port forwarding rules. Devices on the LAN or DMZ can send a request to the Internet along one of the defined outgoing ports, and then the configured rule will open the corresponding incoming port for the specified type of traffic coming from the WAN. Note that port triggering is not appropriate for servers on the LAN, since there is a dependency on the LAN device making an outgoing connection before incoming ports are opened. [More...](#)

The table lists all the available port triggering rules and allows several operations on the rules.

List of Available Application Rules

Name	Enable	Protocol	Interface	Outgoing Ports		Incoming Ports	
				Start Port	End Port	Start Port	End Port
<input type="button" value="Edit"/> <input type="button" value="Delete"/> <input type="button" value="Add"/>							

UNIFIED SERVICES ROUTER

Copyright © 2010 D-Link Corporation.

https://192.168.10.1/scgi-bin/platform.cgi?page=applicationRules Internet | Protected Mode: Off 100%

D-Link : Unified Services Router - Microsoft Internet Explorer provided by D-Link Australia

Product Page: DSR-500N Hardware Version: A1 Firmware Version: 1.02B11

D-Link

DSR-500N // SETUP ADVANCED TOOLS STATUS HELP

Application Rules **APPLICATION RULES CONFIGURATION** **LOGOUT**

Website Filter

Firewall Settings

Wireless Settings

Advanced Network

Routing

Certificates

Users

IP/MAC Binding

IPv6

Radius Settings

Power Saving

Helpful Hints... Application rules are also referred to as port forwarding rules. Devices on the LAN or DMZ can send a request to the Internet along one of the defined outgoing ports, and then the configured rule will open the corresponding incoming port for the specified type of traffic coming from the WAN. Note that port triggering is not appropriate for servers on the LAN, since there is a dependency on the LAN device making an outgoing connection before incoming ports are opened. [More...](#)

This page allows a user to add a new port triggering rule.

Application Rules

Name:

Enable:

Protocol: (TCP, UDP)

Interface:

Outgoing (Trigger) Port Range

Start Port:

To:

Incoming (Response) Port Range

Start Port:

To:

UNIFIED SERVICES ROUTER

Done Internet | Protected Mode: Off 100%

D-Link : Unified Services Router - Microsoft Internet Explorer provided by D-Link Australia

Product Page: DSR-500N Hardware Version: A1 Firmware Version: 1.02B11

D-Link

DSR-500N // SETUP ADVANCED TOOLS STATUS HELP

Application Rules Website Filter Firewall Settings Wireless Settings Advanced Network Routing Certificates Users IP/MAC Binding IPv6 Radius Settings Power Saving

APPLICATION RULES STATUS LOGOUT

This page lists the application rules currently configured.

LAN/DMZ IP Address	Open Ports	Time Remaining (Sec.)
Refresh		

Helpful Hints... This page will show the open ports and expiry time for a particular rule. More...

UNIFIED SERVICES ROUTER

Internet | Protected Mode: Off

D-Link : Unified Services Router - Microsoft Internet Explorer provided by D-Link Australia

Product Page: DSR-500N Hardware Version: A1 Firmware Version: 1.02B11

D-Link

DSR-500N // SETUP ADVANCED TOOLS STATUS HELP

Application Rules Website Filter Firewall Settings Wireless Settings Advanced Network Routing Certificates Users IP/MAC Binding IPv6 Radius Settings Power Saving

Content Filtering LOGOUT

Approved or Blocked URL's can be configured only when content Filtering is enabled. More...

Approved URLs
Blocked Keywords

Save Settings Don't Save Settings

Content Filtering Configuration

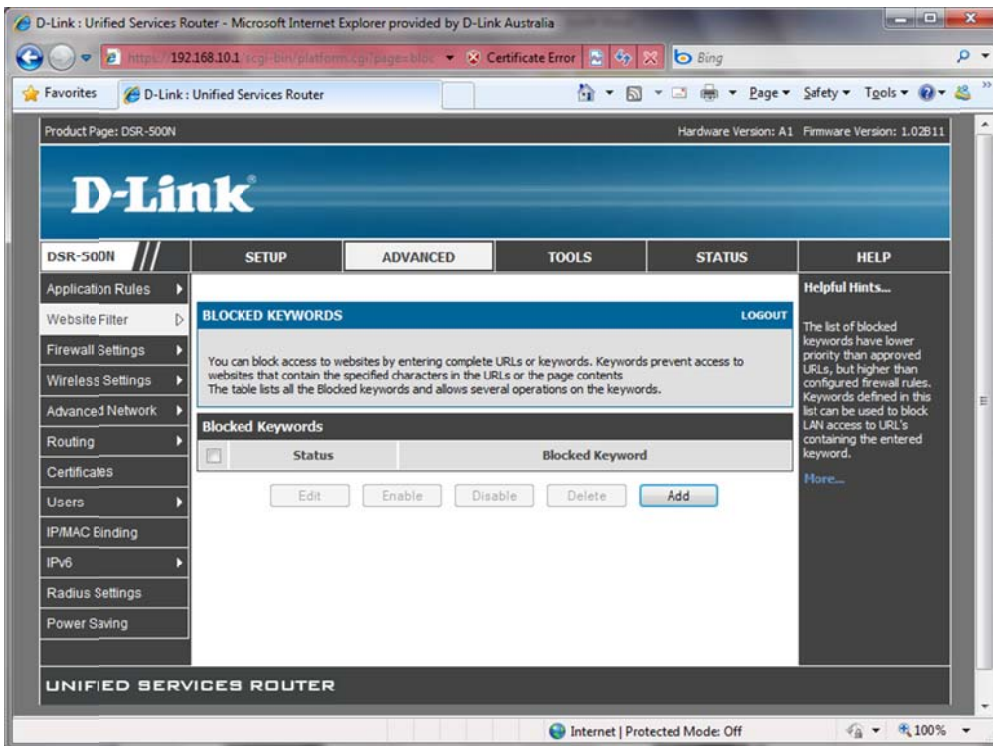
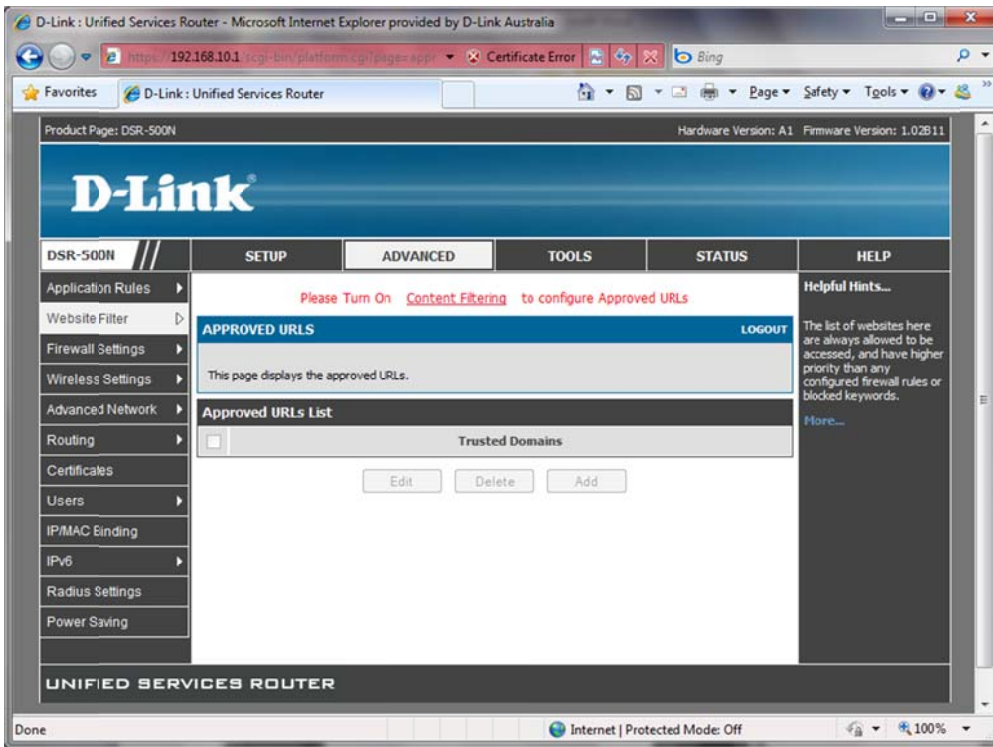
Enable Content Filtering:

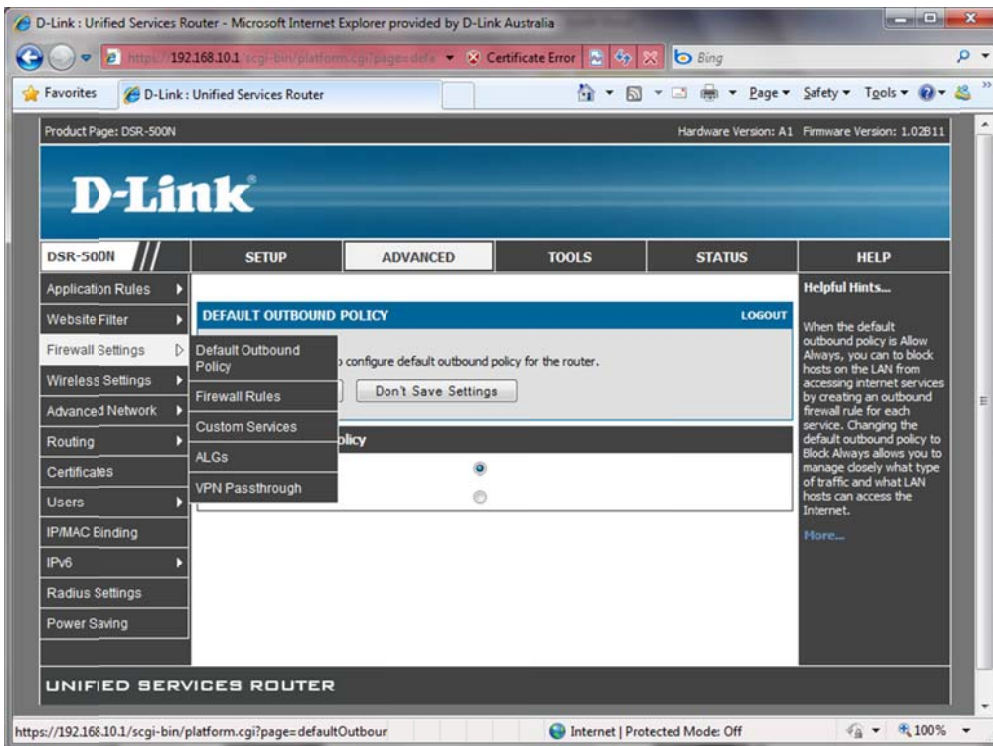
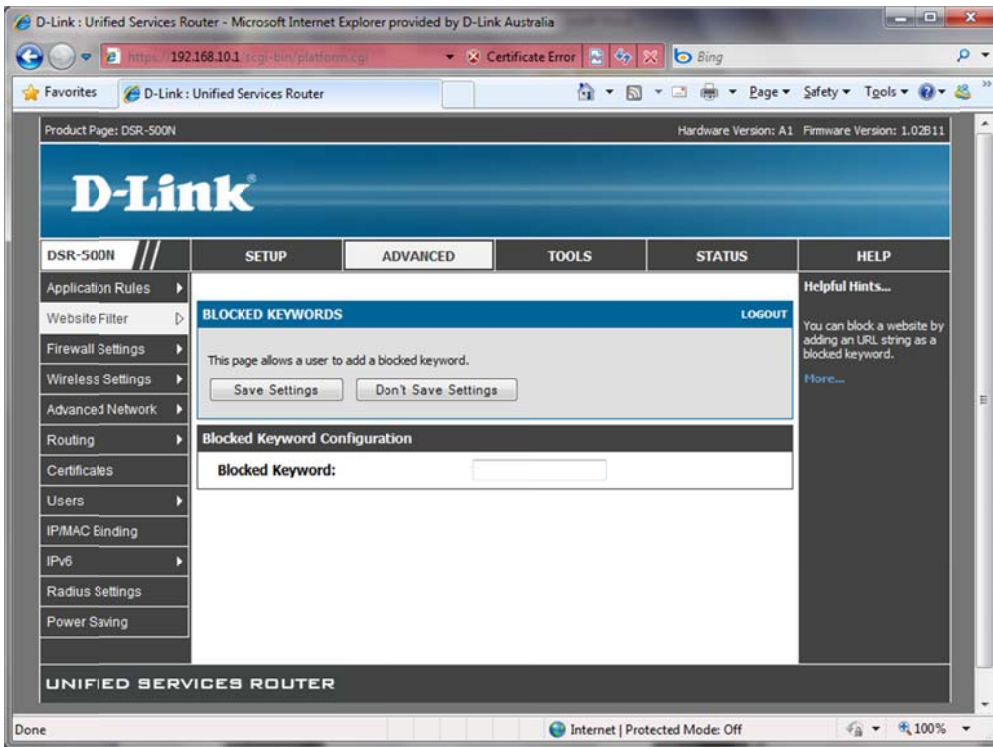
Web Components

Proxy:
 Java:
 ActiveX:
 Cookies:

UNIFIED SERVICES ROUTER

https://192.168.10.1/scgi-bin/platform.cgi?page=contentFiltering Internet | Protected Mode: Off





D-Link : Unified Services Router - Microsoft Internet Explorer provided by D-Link Australia

Product Page: DSR-500N Hardware Version: A1 Firmware Version: 1.02B11

D-Link

DSR-500N // SETUP ADVANCED TOOLS STATUS HELP

Application Rules Website Filter Firewall Settings Wireless Settings Advanced Network Routing Certificates Users IP/MAC Binding IPv6 Radius Settings Power Saving

DEFAULT OUTBOUND POLICY

LOGOUT

This page allows a user to configure default outbound policy for the router.

Save Settings Don't Save Settings

Default Outbound Policy

Allow Always:

Block Always:

Helpful Hints...
When the default outbound policy is Allow Always, you can to block hosts on the LAN from accessing internet services by creating an outbound firewall rule for each service. Changing the default outbound policy to Block Always allows you to manage closely what type of traffic and what LAN hosts can access the Internet.
More...

UNIFIED SERVICES ROUTER

Internet | Protected Mode: Off

D-Link : Unified Services Router - Microsoft Internet Explorer provided by D-Link Australia

Product Page: DSR-500N Hardware Version: A1 Firmware Version: 1.02B11

D-Link

DSR-500N // SETUP ADVANCED TOOLS STATUS HELP

Application Rules Website Filter Firewall Settings Wireless Settings Advanced Network Routing Certificates Users IP/MAC Binding IPv6 Radius Settings Power Saving

FIREWALL RULES

LOGOUT

A firewall is a security mechanism to selectively block or allow certain types of traffic in accordance with rules specified by network administrators. You can use this page to manage the firewall rules that control traffic to and from your network. The List of Available Firewall Rules table includes all firewall rules for this device and allows several operations on the firewall rules.

List of Available Firewall Rules

<input type="checkbox"/>	#	Status	From Zone	To Zone	Service	Action	Source Hosts	Dest Hosts	Local Server	Internet Dest	Log
<p>Edit Enable Disable Delete Add</p> <p>Move To: First Move</p>											

Helpful Hints...
Inbound rules govern access from the WAN to the LAN or DMZ. Using firewall rules allow you to specify which local resources can be accessed from the internet. By default all access from the internet is blocked from accessing the secure LAN, except in response to requests from the LAN or DMZ. Outbound (LAN/DMZ to WAN) rules restrict access to traffic leaving your network, selectively allowing only specific local users to access outside resources. Firewall rules are applied in the order listed. As a general rule, you should move the strictest rules (those with the most specific services or addresses) to the top of the list.

Done

Internet | Protected Mode: Off

D-Link : Unified Services Router - Microsoft Internet Explorer provided by D-Link Australia

http://192.168.10.1/cgi-bin/platform.cgi Certificate Error Bing

D-Link : Unified Services Router

FIREWALL RULES LOGOUT

This page allows you to add a new firewall rule or edit the configuration of an existing firewall rule. The details will then be displayed in the List of Available Firewall Rules table on the Firewall Rules page.

Save Settings Deny Save Settings

Firewall Rule Configuration

From Zone: SECURE (LAN) **To Zone:** INSECURE (Dedicated WAN/Configurable WAN)

Service: ANY

Action: Always Block
Always Block
Always Allow
Block by schedule, otherwise Allow
Allow by schedule, otherwise Block

Select Schedule:

Source Hosts:
From:
To:

Destination Hosts: Any
From:
To:

Log: Never **QoS Priority:** Normal-Service

Source NAT Settings

External IP Address: WAN Interface Address
Single IP Address:
WAN Interface: WAN1

Destination NAT Settings

Internal IP Address:
Enable Port Forwarding:
Translate Port Number:
External IP Address: Dedicated WAN

If you are not an expert user, we recommend not to configure firewall rules and leave the router into default firewall configuration.
More...

Done Internet | Protected Mode: Off 100%

D-Link : Unified Services Router - Microsoft Internet Explorer provided by D-Link Australia

http://192.168.10.1/cgi-bin/platform.cgi Certificate Error Bing

D-Link : Unified Services Router

FIREWALL RULES LOGOUT

This page allows you to add a new firewall rule or edit the configuration of an existing firewall rule. The details will then be displayed in the List of Available Firewall Rules table on the Firewall Rules page.

Firewall Rule Configuration

From Zone: SECURE (LAN)
To Zone: INSECURE (Dedicated WAN/Configurable WAN)
Service: ANY
Action:
Select Schedule:
Source Hosts:
From:
To:
Destination Hosts:
From:
To:
Log:
QoS Priority:

Source NAT Settings

External IP Address:
Single IP Address:
WAN Interface: WANI

Destination NAT Settings

Internal IP Address:
Enable Port Forwarding:
Translate Port Number:
External IP Address: Dedicated WAN

If you are not an expert user, we recommend not to configure firewall rules and leave the router into default firewall configuration.
[More...](#)

Done Internet | Protected Mode: Off 100%

D-Link : Unified Services Router - Microsoft Internet Explorer provided by D-Link Australia

http://192.168.10.1/cgi-bin/platform.cgi Certificate Error Bing

D-Link : Unified Services Router

FIREWALL RULES LOGOUT

This page allows you to add a new firewall rule or edit the configuration of an existing firewall rule. The details will then be displayed in the List of Available Firewall Rules table on the Firewall Rules page.

Save Settings Deny Save Settings

Firewall Rule Configuration

From Zone: SECURE (LAN) **To Zone:** INSECURE (Dedicated WAN/Configurable WAN)

Service: ANY **Action:** Always Block

Select Schedule: []

Source Hosts: Any

From: [Any] [Single Address] [Address Range]

To: []

Destination Hosts: Any

From: [] **To:** []

Log: Never **QoS Priority:** Normal-Service

Source NAT Settings

External IP Address: WAN Interface Address

Single IP Address: []

WAN Interface: WAN1

Destination NAT Settings

Internal IP Address: []

Enable Port Forwarding: []

Translate Port Number: []

External IP Address: Dedicated WAN

If you are not an expert user, we recommend not to configure firewall rules and leave the router into default firewall configuration. More...

Done Internet | Protected Mode: Off 100%

D-Link : Unified Services Router - Microsoft Internet Explorer provided by D-Link Australia

http://192.168.101:192.168.101/cgi-bin/platform.cgi Certificate Error Bing

D-Link : Unified Services Router

Save Settings Don't Save Settings

Firewall Rule Configuration

From Zone: SECURE (LAN) To Zone: INSECURE (Dedicated WAN/Configurable WAN) Service: ANY Action: Always Block

Select Schedule: [] Source Hosts: Any

From: [] To: [] Destination Hosts: Any

From: [] To: [] Log: Never QoS Priority: Normal-Service

Source NAT Settings

External IP Address: [] Single IP Address: [] WAN Interface: WAN1

Destination NAT Settings

Internal IP Address: [] Enable Port Forwarding: [] Translate Port Number: [] External IP Address: Dedicated WAN

UNIFIED SERVICES ROUTER

Copyright © 2010 D-Link Corporation.

Done Internet | Protected Mode: Off 100%

D-Link : Unified Services Router - Microsoft Internet Explorer provided by D-Link Australia

http://192.168.101:192.168.101/cgi-bin/platform.cgi/page Certificate Error Bing

D-Link : Unified Services Router

Product Page: DSR-500N Hardware Version: A1 Firmware Version: 1.02B11

D-Link

DSR-500N // SETUP ADVANCED TOOLS STATUS HELP

Application Rules Website Filter Firewall Settings Wireless Settings Advanced Network Routing Certificates Users IP/MAC Binding IPv6 Radius Settings Power Saving

CUSTOM SERVICES LOGOUT

When you create a firewall rule, you can specify a service that is controlled by the rule.. Common types of services are available for selection, and you can create your own custom services. This page allows creation of custom services against which firewall rules can be defined. Once defined, the new service will appear in the List of Available Custom Services table.

Name	Type	ICMP Type / Port Range
<input type="button" value="Edit"/> <input type="button" value="Delete"/> <input type="button" value="Add"/>		

Helpful Hints... While common services use known TCP/UDP/ICMP ports, many custom or uncommon applications require traffic to be sent through the firewall. This section allows you to define traffic type and static ports for a unique identifier and then create firewall rules for this user-defined service.

Done Internet | Protected Mode: Off 100%

D-Link : Unified Services Router - Microsoft Internet Explorer provided by D-Link Australia

https://192.168.10.1/cgi-bin/platform.cgi Certificate Error Bing

Product Page: DSR-500N Hardware Version: A1 Firmware Version: 1.02B11

D-Link

DSR-500N // SETUP ADVANCED TOOLS STATUS HELP

ApplicationRules Website Filter Firewall Settings Wireless Settings Advanced Network Routing Certificates Users IP/MAC Binding IPv6 Radius Settings Power Saving

CUSTOM SERVICES

LOGOUT

This page allows a user to add a user defined custom service.

Save Settings Don't Save Settings

Custom Services Configuration

Name:

Type:

- TCP
- UDP
- ICMP

ICMP Type:

Start Port:

Finish Port:

Helpful Hints... You can add custom services from here and use them in your firewall rules. More...

Done Internet | Protected Mode: Off 100%

D-Link : Unified Services Router - Microsoft Internet Explorer provided by D-Link Australia

https://192.168.10.1/cgi-bin/platform.cgi/page Certificate Error Bing

Product Page: DSR-500N Hardware Version: A1 Firmware Version: 1.02B11

D-Link

DSR-500N // SETUP ADVANCED TOOLS STATUS HELP

ApplicationRules Website Filter Firewall Settings Wireless Settings Advanced Network Routing Certificates Users IP/MAC Binding IPv6 Radius Settings Power Saving

ALGS

LOGOUT

Application Level Gateway allows customized NAT traversal filters to be plugged into the gateway to support address and port translation for certain application layer "control/data" protocols such as TFTP, SIP, RTSP, IPsec, PPTP etc. Each ALG provides special handling for a specific protocol or application. A number of ALGs for common applications are enabled by default.

Save Settings Don't Save Settings

Enable ALGs

PPTP:	<input type="checkbox"/>
IPSec:	<input type="checkbox"/>
RTSP:	<input type="checkbox"/>
SIP:	<input type="checkbox"/>
H.323:	<input type="checkbox"/>
SMTP:	<input type="checkbox"/>
DNS:	<input type="checkbox"/>
TFTP:	<input type="checkbox"/>

Helpful Hints... ALGs are security component that enhance the firewall and NAT support of this router to seamlessly support application layer protocols. Because the ALG understands the protocol used by the specific application that it supports, it is a very secure and efficient way of introducing support for client applications through the router's firewall. More...

Done Internet | Protected Mode: Off 100%

D-Link : Unified Services Router - Microsoft Internet Explorer provided by D-Link Australia

Product Page: DSR-500N Hardware Version: A1 Firmware Version: 1.02B11

D-Link

DSR-500N // SETUP ADVANCED TOOLS STATUS HELP

ApplicationRules Website Filter Firewall Settings Wireless Settings Advanced Network Routing Certificates Users IP/MAC Binding IPv6 Radius Settings Power Saving

VPN PASSTHROUGH

LOGOUT

This page allows user to configure VPN (IPSec, PPTP and L2TP) passthrough on the router. Enabled passthrough checkboxes have higher priority than firewall rules based on the same service.

Save Settings Don't Save Settings

VPN Passthrough

IPSec:	<input checked="" type="checkbox"/>
PPTP:	<input checked="" type="checkbox"/>
L2TP:	<input checked="" type="checkbox"/>

UNIFIED SERVICES ROUTER

Done Internet | Protected Mode: Off 100%

D-Link : Unified Services Router - Microsoft Internet Explorer provided by D-Link Australia

Product Page: DSR-500N Hardware Version: A1 Firmware Version: 1.02B11

D-Link

DSR-500N // SETUP ADVANCED TOOLS STATUS HELP

ApplicationRules Website Filter Firewall Settings Wireless Settings Advanced Network Routing Certificates Users IP/MAC Binding IPv6 Radius Settings Power Saving

ADVANCED WIRELESS

LOGOUT

This page is used to specify advanced configuration settings for the radio.

Advanced Wireless Don't Save Settings

Advanced Wireless Configuration

Beacon Interval:	100	(Milliseconds)
Dtim Interval:	2	
RTS Threshold:	2346	
Fragmentation Threshold:	2346	
Preamble Mode:	Long	
Protection Mode:	None	
Power Save Enable:	<input type="checkbox"/>	

It is recommended that you leave these options at their default values. Modifying these could negatively impact the performance of your wireless network.

https://192.168.10.1/scgi-bin/platform.cgi?page=advanced Internet | Protected Mode: Off 100%

D-Link : Unified Services Router - Microsoft Internet Explorer provided by D-Link Australia

Product Page: DSR-500N Hardware Version: A1 Firmware Version: 1.02B11

D-Link

DSR-500N // SETUP ADVANCED TOOLS STATUS HELP

ApplicationRules Website Filter Firewall Settings Wireless Settings Advanced Network Routing Certificates Users IP/MAC Binding IPv6 Radius Settings Power Saving

WPS

LOGOUT

This page allows you to define and modify the Wi-Fi Protected Setup (WPS) configuration parameters.

Save Settings Don't Save Settings

WPS Configuration

Select VAP: ap1

WPS Status: Disabled

WPS Current Status

Security: N/A
Authentication: N/A
Encryption: N/A

WPS Setup Method

Station PIN:

Configure via PIN Configure via PBC

Session Status:

Helpful Hints...
WPS is a simplified method to add supporting wireless clients to the network, and can only be used for APs that use WPA or WPA2 security. Note that more than one AP can use WPS, but only one AP can be used to establish WPS links to client at any given time.
More...

Done Internet | Protected Mode: Off 100%

D-Link : Unified Services Router - Microsoft Internet Explorer provided by D-Link Australia

Product Page: DSR-500N Hardware Version: A1 Firmware Version: 1.02B11

D-Link

DSR-500N // SETUP ADVANCED TOOLS STATUS HELP

ApplicationRules Website Filter Firewall Settings Wireless Settings Advanced Network Routing Certificates Users IP/MAC Binding IPv6 Radius Settings Power Saving

Please enable UPnP to refresh UPnP Portmap Table.

UPnP

LOGOUT

UPnP (Universal Plug and Play) is a feature that allows for automatic discovery of devices that can communicate with this security appliance

Don't Save Settings

Enable UPnP?

LAN

Advertisement Time To Live: 1800 (In Secs)
4 (In Hops)

UPnP Port map Table

Active	Protocol	Int. Port	Ext. Port	IP Address
Refresh				

Helpful Hints...
UPnP is useful for auto-configuring application rules, where internal/external ports for the traffic protocol required by a detected network device are opened without user intervention. The UPnP Port Map Table has the details of UPnP devices that respond to the router's advertisements, and thereby don't require corresponding application (port forwarding) rules to be configured.
More...

UNIFIED SERVICES ROUTER

https://192.168.10.1/scgi-bin/platform.cgi?page=upnp.htm Internet | Protected Mode: Off 100%

D-Link : Unified Services Router - Microsoft Internet Explorer provided by D-Link Australia

Product Page: DSR-500N Hardware Version: A1 Firmware Version: 1.02B11

D-Link

DSR-500N // SETUP ADVANCED TOOLS STATUS HELP

ApplicationRules Website Filter Firewall Settings Wireless Settings Advanced Network Routing Certificates Users IP/MAC Binding IPv6 Radius Settings Power Saving

Please enable UPnP to refresh UPnP Portmap Table.

UPnP LOGOUT

UPnP (Universal Plug and Play) is a feature that allows for automatic discovery of devices that can communicate with this security appliance

Save Settings Don't Save Settings

UPnP Enable

Do you want to enable UPnP?

LAN: LAN

Advertisement Period: 1800 (In Secs)

Advertisement Time To Live: 4 (In Hops)

UPnP Port map Table

Active	Protocol	Int. Port	Ext. Port	IP Address
Refresh				

UNIFIED SERVICES ROUTER

Internet | Protected Mode: Off

D-Link : Unified Services Router - Microsoft Internet Explorer provided by D-Link Australia

Product Page: DSR-500N Hardware Version: A1 Firmware Version: 1.02B11

D-Link

DSR-500N // SETUP ADVANCED TOOLS STATUS HELP

ApplicationRules Website Filter Firewall Settings Wireless Settings Advanced Network Routing Certificates Users IP/MAC Binding IPv6 Radius Settings Power Saving

WAN PORT SETUP LOGOUT

This page allows user to configure advanced WAN options for the router.

Save Settings Don't Save Settings

WANs Ping

Respond to Ping:

WAN1 Port Setup

MTU Size: Default

Custom MTU: Custom

Port Speed: Auto Sense

WAN2 Port Setup

MTU Size: Default

Custom MTU: 1500

Port Speed: Auto Sense

Helpful Hints... The physical port settings for each WAN link can be defined here. If your ISP account defines the WAN port speed or is associated with a MAC address, enter the details here. One key parameter is the ability to disable ping response on the WAN ports. Disabling this will increase the router's overall security as it will not be detected easily from internet attacks that would attempt to take control of or disable the router.

Done

Internet | Protected Mode: Off

D-Link : Unified Services Router - Microsoft Internet Explorer provided by D-Link Australia

Product Page: DSR-500N Hardware Version: A1 Firmware Version: 1.02B11

D-Link

DSR-500N	SETUP	ADVANCED	TOOLS	STATUS	HELP
Application Rules	IGMP SETUP LOGOUT				Helpful Hints... This is known as active IGMP snooping, and lets the router listen in on IGMP network traffic. The router filters multicast traffic through the router and is used to prevent LAN hosts from receiving traffic from a multicast group that they have not explicitly joined. More...
Website Filter	The IGMP Proxy page allows the user to enable IGMP proxy on a LAN interface. <input type="button" value="Save Settings"/> <input type="button" value="Don't Save Settings"/>				
Firewall Settings	IGMP Setup				
Wireless Settings	Enable IGMP Proxy: <input type="checkbox"/>				
Advanced Network					
Routing					
Certificates					
Users					
IP/MAC Binding					
IPv6					
Radius Settings					
Power Saving					

Done Internet | Protected Mode: Off 100%

D-Link : Unified Services Router - Microsoft Internet Explorer provided by D-Link Australia

Product Page: DSR-500N Hardware Version: A1 Firmware Version: 1.02B11

D-Link

DSR-500N	SETUP	ADVANCED	TOOLS	STATUS	HELP
Application Rules	IPS LOGOUT				Helpful Hints... IPS prevents malicious attacks from the internet from accessing the private network. Traffic from the LAN or WAN ports are compared against static attack signatures loaded to the router in order to detect and prevent the router from being starved of resources or otherwise disabled. More...
Website Filter	This page allows user to configure Intrusion Detection System and Intrusion Prevention system on the router. <input type="button" value="Save Settings"/> <input type="button" value="Don't Save Settings"/>				
Firewall Settings	Intrusion Detection/Prevention Enable				
Wireless Settings	Enable Intrusion Detection: <input type="checkbox"/> Enable Intrusion Prevention: <input type="checkbox"/>				
Advanced Network	IPS Checks Active Between				
Routing	LAN and WAN: <input type="checkbox"/> DMZ and WAN: <input type="checkbox"/>				
Certificates	IPS Status				
Users	Number of Signatures Loaded: 0				
IP/MAC Binding					
IPv6					
Radius Settings					
Power Saving					

Done Internet | Protected Mode: Off 100%

D-Link : Unified Services Router - Microsoft Internet Explorer provided by D-Link Australia

Product Page: DSR-500N Hardware Version: A1 Firmware Version: 1.02B11

D-Link

DSR-500N	SETUP	ADVANCED	TOOLS	STATUS	HELP
----------	-------	----------	-------	--------	------

ApplicationRules Website Filter Firewall Settings Wireless Settings Advanced Network Routing Certificates Users IP/MAC Binding IPv6 Radius Settings Power Saving

ATTACK CHECKS

LOGOUT

This page allows you to specify whether or not to protect against common attacks from the LAN and WAN networks.

Save Settings Don't Save Settings

WAN Security Checks

Enable Stealth Mode:
 Block TCP flood:

LAN Security Checks

Block UDP flood:

ICSA Settings

Block ICMP Notification:
 Block Fragmented Packets:
 Block Multicast Packets:

DoS Attacks

SYN Flood Detect Rate [max/sec]: 128
 Echo Storm [ping pkts./sec]: 15
 ICMP Flood [ICMP pkts./sec]: 100

Helpful Hints...
 For added security, it is recommended that you enable Stealth Mode. This blocks ping and ARP response from the WAN interfaces. Ping is often used by malicious Internet users to locate active networks or PCs.
 More...

Done Internet | Protected Mode: Off 100%

D-Link : Unified Services Router - Microsoft Internet Explorer provided by D-Link Australia

Product Page: DSR-500N Hardware Version: A1 Firmware Version: 1.02B11

D-Link

DSR-500N	SETUP	ADVANCED	TOOLS	STATUS	HELP
----------	-------	----------	-------	--------	------

ApplicationRules Website Filter Firewall Settings Wireless Settings Advanced Network Routing Certificates Users IP/MAC Binding IPv6 Radius Settings Power Saving

Please enable Bandwidth Profiles to perform Add/Edit/Delete Operations

BANDWIDTH PROFILES

LOGOUT

This page shows the list of configured bandwidth profiles. These profiles then can be used with the traffic selectors.

Don't Save Settings

Profiles:

Profiles	Bandwidth Rate / Priority

Traffic Selectors

Helpful Hints...
 With bandwidth profiles you can shape and regulate the LAN to WAN traffic. This is useful to ensure that low priority LAN users do not monopolize the available WAN's bandwidth for cost-savings or bandwidth-allocation purposes.
 More...

UNIFIED SERVICES ROUTER

Copyright © 2010 D-Link Corporation.

https://192.168.10.1/scgi-bin/platform.cgi?page=bandwid Internet | Protected Mode: Off 100%

D-Link : Unified Services Router - Microsoft Internet Explorer provided by D-Link Australia

Product Page: DSR-500N Hardware Version: A1 Firmware Version: 1.02B11

D-Link

DSR-500N // SETUP ADVANCED TOOLS STATUS HELP

ApplicationRules Website Filter Firewall Settings Wireless Settings Advanced Network Routing Certificates Users IP/MAC Binding IPv6 Radius Settings Power Saving

Operation succeeded

BANDWIDTH PROFILES

LOGOUT

This page shows the list of configured bandwidth profiles. These profiles then can be used with the traffic selectors.

Save Settings Don't Save Settings

Enable Bandwidth Profiles:

List of Bandwidth Profiles

<input type="checkbox"/>	Name	Bandwidth Rate / Priority
<input type="button" value="Edit"/> <input type="button" value="Delete"/> <input type="button" value="Add"/>		

Helpful Hints...
With bandwidth profiles you can shape and regulate the LAN to WAN traffic. This is useful to ensure that low priority LAN users do not monopolize the available WAN's bandwidth for cost-savings or bandwidth-priority-allocation purposes.
[More...](#)

Internet | Protected Mode: Off

D-Link : Unified Services Router - Microsoft Internet Explorer provided by D-Link Australia

Product Page: DSR-500N Hardware Version: A1 Firmware Version: 1.02B11

D-Link

DSR-500N // SETUP ADVANCED TOOLS STATUS HELP

ApplicationRules Website Filter Firewall Settings Wireless Settings Advanced Network Routing Certificates Users IP/MAC Binding IPv6 Radius Settings Power Saving

BANDWIDTH PROFILES

LOGOUT

This page allows user to add a new bandwidth profile.

Save Settings Don't Save Settings

Bandwidth Profile Configuration

Name:

Profile Type:

Priority:

Minimum Bandwidth Rate: (1 - Max. Bandwidth Kbps)

Maximum Bandwidth Rate: (100 - 1000000 Kbps)

WAN Interface:

Helpful Hints...
The new configured bandwidth profile can be attached to a traffic selector for bandwidth management on the router.
[More...](#)

UNIFIED SERVICES ROUTER

Done

Internet | Protected Mode: Off

D-Link : Unified Services Router - Microsoft Internet Explorer provided by D-Link Australia

https://192.168.101/cgi-bin/platform.cgi Certificate Error Bing

Product Page: DSR-500N Hardware Version: A1 Firmware Version: 1.02B11

D-Link

DSR-500N // SETUP ADVANCED TOOLS STATUS HELP

ApplicationRules Website Filter Firewall Settings Wireless Settings Advanced Network Routing Certificates Users IP/MAC Binding IPv6 Radius Settings Power Saving

BANDWIDTH PROFILES

LOGOUT

This page allows user to add a new bandwidth profile.

Save Settings Don't Save Settings

Bandwidth Profile Configuration

Name:

Profile Type: Priority

Priority: Low Medium High

Minimum Bandwidth Rate: (1 - Max. Bandwidth Kbps)

Maximum Bandwidth Rate: (100 - 1000000 Kbps)

WAN Interface: Dedicated WAN

UNIFIED SERVICES ROUTER

Done Internet | Protected Mode: Off 100%

D-Link : Unified Services Router - Microsoft Internet Explorer provided by D-Link Australia

https://192.168.101/cgi-bin/platform.cgi/page Certificate Error Bing

Product Page: DSR-500N Hardware Version: A1 Firmware Version: 1.02B11

D-Link

DSR-500N // SETUP ADVANCED TOOLS STATUS HELP

ApplicationRules Website Filter Firewall Settings Wireless Settings Advanced Network Routing Certificates Users IP/MAC Binding IPv6 Radius Settings Power Saving

TRAFFIC SELECTORS

LOGOUT

This page shows a list of traffic selectors. Traffic selectors are service based rules to which user can attach bandwidth profiles.

List of Traffic Selectors

<input type="checkbox"/>	Service	Traffic Selector Match Type	Bandwidth Profile
<input type="button" value="Edit"/> <input type="button" value="Delete"/> <input type="button" value="Add"/>			

UNIFIED SERVICES ROUTER

Done Internet | Protected Mode: Off 100%

D-Link : Unified Services Router - Microsoft Internet Explorer provided by D-Link Australia

Product Page: DSR-500N Hardware Version: A1 Firmware Version: 1.02B11

D-Link

DSR-500N // SETUP ADVANCED TOOLS STATUS HELP

ApplicationRules Website Filter Firewall Settings Wireless Settings Advanced Network Routing Certificates Users IP/MAC Binding IPv6 Radius Settings Power Saving

TRAFFIC SELECTORS

LOGOUT

This page allows user to configure various traffic rules, to which bandwidth profiles can be attached.

Save Settings Don't Save Settings

Traffic Selector Configuration

Available Profiles: [v]
 Service: ANY [v]
 Traffic Selector Match Type: IP [v]
 IP Address: [text]
 MAC Address: [text]
 Port Name: Port 1 [v]
 Interface: [v]

Helpful Hints...
 Once a bandwidth profile has been created it can then be associated with a traffic flow from the LAN to WAN. Traffic selectors are elements like IP addresses or services that require their outbound traffic to be regulated.
 More...

Done Internet | Protected Mode: Off 100%

D-Link : Unified Services Router - Microsoft Internet Explorer provided by D-Link Australia

Product Page: DSR-500N Hardware Version: A1 Firmware Version: 1.02B11

D-Link

DSR-500N // SETUP ADVANCED TOOLS STATUS HELP

ApplicationRules Website Filter Firewall Settings Wireless Settings Advanced Network Routing Certificates Users IP/MAC Binding IPv6 Radius Settings Power Saving

STATIC ROUTING

LOGOUT

This page shows the list of static routes configured on the router. User can also add, delete and edit the configured routes.

List of Static Routes

Static Routing	Subnet Mask	Gateway	Interface	Metric	Active	Private
Edit Delete Add						

Helpful Hints...
 Use this page to define static routes. Be sure to enter a destination address, subnet mask, gateway and metric for each configured static route.
 The Interface dropdown menu will show all available configured wired interfaces on the router as options.
 More...

UNIFIED SERVICES ROUTER

https://192.168.10.1/scgi-bin/platform.cgi?page=staticRou Internet | Protected Mode: Off 100%

D-Link : Unified Services Router - Microsoft Internet Explorer provided by D-Link Australia

Product Page: DSR-500N Hardware Version: A1 Firmware Version: 1.02B11

D-Link

DSR-500N // SETUP ADVANCED TOOLS STATUS HELP

Application Rules Website Filter Firewall Settings Wireless Settings Advanced Network Routing Certificates Users IP/MAC Binding IPv6 Radius Settings Power Saving

STATIC ROUTE CONFIGURATION

LOGOUT

This page allows user to add a new static route.

Save Settings Don't Save Settings

Static Route Configuration

Route Name:

Active:

Private:

Destination IP Address:

IP Subnet Mask:

Interface:

- Dedicated WAN
- Dedicated WAN
- Configurable WAN
- LAN > VLAN
- DMZ

Gateway IP Address:

Metric:

Helpful Hints... Static routes can be used for routing the traffic. You can select the interface from where you want to route the traffic. More...

Done Internet | Protected Mode: Off 100%

D-Link : Unified Services Router - Microsoft Internet Explorer provided by D-Link Australia

Product Page: DSR-500N Hardware Version: A1 Firmware Version: 1.02B11

D-Link

DSR-500N // SETUP ADVANCED TOOLS STATUS HELP

Application Rules Website Filter Firewall Settings Wireless Settings Advanced Network Routing Certificates Users IP/MAC Binding IPv6 Radius Settings Power Saving

PROTOCOL BINDINGS

LOGOUT

This page shows the configured protocol bindings. A user can also add, delete, edit, enable or disable the protocol bindings.

List of Available Protocol Bindings

<input type="checkbox"/>	Status	Service	Local Gateway	Source Network	Destination Network
<input type="button" value="Edit"/> <input type="button" value="Enable"/> <input type="button" value="Disable"/> <input type="button" value="Delete"/> <input type="button" value="Add"/>					

Helpful Hints... Protocol bindings are required when the Load Balancing feature is in use, and are only applicable when two WAN links are configured. This feature lets you assign a service to a particular WAN link to ensure the high priority services are sent to the more reliable or less expensive ISP. More...

UNIFIED SERVICES ROUTER

Copyright © 2010 D-Link Corporation.

Done Internet | Protected Mode: Off 100%

D-Link : Unified Services Router - Microsoft Internet Explorer provided by D-Link Australia

Product Page: DSR-500N Hardware Version: A1 Firmware Version: 1.02B11

D-Link

DSR-500N // SETUP ADVANCED TOOLS STATUS HELP

ApplicationRules Website Filter Firewall Settings Wireless Settings Advanced Network Routing Certificates Users IP/MAC Binding IPv6 Radius Settings Power Saving

PROTOCOL BINDINGS LOGOUT

This page allows user to add a new protocol binding rule for the WAN interfaces.

Save Settings Don't Save Settings

Protocol Binding Configuration

Service: ANY
 Local Gateway: Dedicated WAN
 Source Network: Any
 Start Address: [input]
 End Address: [input]
 Destination Network: Any
 Start Address: [input]
 End Address: [input]

Helpful Hints... Protocol bindings will work, when WAN is configured in Load Balancing mode. More...

Done Internet | Protected Mode: Off

D-Link : Unified Services Router - Microsoft Internet Explorer provided by D-Link Australia

Product Page: DSR-500N Hardware Version: A1 Firmware Version: 1.02B11

D-Link

DSR-500N // SETUP ADVANCED TOOLS STATUS HELP

ApplicationRules Website Filter Firewall Settings Wireless Settings Advanced Network Routing Certificates Users IP/MAC Binding IPv6 Radius Settings Power Saving

CERTIFICATES LOGOUT

Digital Certificates (also known as X509 Certificates) are used to authenticate the identity of users and systems, and are issued by Certification Authorities (CA) such as VeriSign, Thawte and other organizations. Digital Certificates are used by this router during the Internet Key Exchange (IKE) authentication phase to authenticate connecting VPN gateways or clients, or to be authenticated by remote entities.

Trusted Certificates (CA Certificate)

<input type="checkbox"/>	CA Identity (Subject Name)	Issuer Name	Expiry Time
<input type="button" value="Upload"/> <input type="button" value="Delete"/>			

Active Self Certificates

<input type="checkbox"/>	Name	Subject Name	Serial Number	Issuer Name	Expiry Time
<input type="button" value="Upload"/> <input type="button" value="Delete"/>					

Self Certificate Requests

<input type="checkbox"/>	Name	Status	Action
<input type="button" value="New Self Certificate"/> <input type="button" value="Delete"/>			

Helpful Hints... IPsec VPN, SSL VPN, and management over HTTPS use digital certificates. The router has a default self-signed certificate, and this can be replaced by one signed by a known Certificate Authority if needed. Note that a CA certificate provides strong assurance of the server's identity and is a requirement for most corporate network VPN solutions. More...

Internet | Protected Mode: Off

D-Link : Unified Services Router - Microsoft Internet Explorer provided by D-Link Australia

Product Page: DSR-500N Hardware Version: A1 Firmware Version: 1.02B11

D-Link

DSR-500N // SETUP ADVANCED TOOLS STATUS HELP

ApplicationRules Website Filter Firewall Settings Wireless Settings Advanced Network Routing Certificates Users IP/MAC Binding IPv6 Radius Settings Power Saving

GET USERS DB LOGOUT

This page allows user to import a CSV formatted user database to the router.

Get Users DB

Get Users DB file: Browse...

Upload

Helpful Hints...
The local user database stored in this router's memory can be extracted for review.
More...

UNIFIED SERVICES ROUTER

Copyright © 2010 D-Link Corporation.

https://192.168.10.1/scgi-bin/platform.cgi?page=getUsersf Internet | Protected Mode: Off 100%

D-Link : Unified Services Router - Microsoft Internet Explorer provided by D-Link Australia

Product Page: DSR-500N Hardware Version: A1 Firmware Version: 1.02B11

D-Link

DSR-500N // SETUP ADVANCED TOOLS STATUS HELP

ApplicationRules Website Filter Firewall Settings Wireless Settings Advanced Network Routing Certificates Users IP/MAC Binding IPv6 Radius Settings Power Saving

DOMAINS LOGOUT

This page shows the list of added domains to the router. The user can add, delete and edit the domains also.

List of Domains

<input type="checkbox"/>	Domain Name	Authentication Type	Portal Layout Name
<input type="checkbox"/>	SSLVPN *	Local User Database	SSLVPN

Edit Delete Add

Helpful Hints...
The Domain determines the authentication method for a VPN or GUI user. For SSL VPN connections, the domain sets the portal layout and corresponding SSL VPN features. You must create a Domain first, and then a new Group can be created and assigned to the Domain. The last step is to add specific SSL VPN users to an already-configured Group.
More...

Done Internet | Protected Mode: Off 100%

D-Link : Unified Services Router : - Microsoft Internet Explorer provided by D-Link Australia

https://192.168.101/cgi-bin/platform.cgi Certificate Error Bing

Product Page: DSR-500N Hardware Version: A1 Firmware Version: 1.02611

D-Link

DSR-500N // SETUP ADVANCED TOOLS STATUS HELP

Application Rules Website Filter Firewall Settings Wireless Settings Advanced Network Routing Certificates Users IP/MAC Binding IPv6 Radius Settings Power Saving

DOMAINS LOGOUT

This page allows a user to add a new domain.

Domains Configuration

Domain Name:

Authentication Type: (Dropdown menu: Local User Database, Local User Database, Radius-PAP, Radius-CHAP, Radius-MSCHAP, Radius-MSCHAPv2, NT Domain, Active Directory, LDAP)

Select Portal:

Authentication Server 1:

Authentication Server 2:

Authentication Server 3: (Optional)

Timeout: (Seconds)

Retries:

Authentication Secret:

Authentication Secret2:

Workgroup:

Second Workgroup: (Optional)

LDAP Base DN:

Second LDAP Base DN: (Optional)

Active Directory Domain:

Second Active Directory Domain: (Optional)

Helpful Hints... Do you know that a domain can have multiple groups attached to it. [More...](#)

Done Internet | Protected Mode: Off 100%

D-Link : Unified Services Router - Microsoft Internet Explorer provided by D-Link Australia

https://192.168.101:1/cgi-bin/platform.cgi Certificate Error Bing

Product Page: DSR-500N Hardware Version: A1 Firmware Version: 1.02811

D-Link

DSR-500N // SETUP ADVANCED TOOLS STATUS HELP

Application Rules Website Filter Firewall Settings Wireless Settings Advanced Network Routing Certificates Users IP/MAC Binding IPv6 Radius Settings Power Saving

DOMAINS LOGOUT

This page allows a user to add a new domain.

Save Settings Don't Save Settings

Domains Configuration

Domain Name:

Authentication Type: Local User Database

Select Portal: SSLVPN

Authentication Server 1:

Authentication Server 2: (Optional)

Authentication Server 3: (Optional)

Timeout: (Seconds)

Retries: 5

Authentication Secret:

Authentication Secret2:

Workgroup:

Second Workgroup: (Optional)

LDAP Base DN:

Second LDAP Base DN: (Optional)

Active Directory Domain:

Second Active Directory Domain: (Optional)

Helpful Hints... Do you know that a domain can have multiple groups attached to it. More...

Done Internet | Protected Mode: Off 100%

D-Link : Unified Services Router - Microsoft Internet Explorer provided by D-Link Australia

https://192.168.101:1/cgi-bin/platform.cgi?ps Certificate Error Bing

Product Page: DSR-500N Hardware Version: A1 Firmware Version: 1.02811

D-Link

DSR-500N // SETUP ADVANCED TOOLS STATUS HELP

Application Rules Website Filter Firewall Settings Wireless Settings Advanced Network Routing Certificates Users IP/MAC Binding IPv6 Radius Settings Power Saving

GROUPS LOGOUT

This page shows the list of added groups to the router. The user can add, delete and edit the groups also.

List of Groups

<input type="checkbox"/>	Name	Domain
<input type="checkbox"/>	SSLVPN *	SSLVPN

Edit Delete Add

Helpful Hints... Groups are domain subsets, which can be used to add access policies to a set of users. You must create a Domain first, and then a new Group can be created and assigned to the Domain. The last step is to add specific SSL VPN users to an already-configured Group. More...

Done Internet | Protected Mode: Off 100%

D-Link : Unified Services Router - Microsoft Internet Explorer provided by D-Link Australia

https://192.168.101.scp-bin/platform.cgi Certificate Error Bing

Product Page: DSR-500N Hardware Version: A1 Firmware Version: 1.02B11

D-Link

DSR-500N // SETUP ADVANCED TOOLS STATUS HELP

Application Rules Website Filter Firewall Settings Wireless Settings Advanced Network Routing Certificates Users IP/MAC Binding IPv6 Radius Settings Power Saving

GROUP CONFIGURATION LOGOUT

This page allows user to add a new user group. Once this group is added, a user can then add system users to it.

Save Settings Don't Save Settings

Group Configuration

Group Name:

Domain: SSLVPN

Idle Timeout: (Minutes)

Helpful Hints... Do you know that you can associate multiple users to a single group. More...

Done Internet | Protected Mode: Off 100%

D-Link : Unified Services Router - Microsoft Internet Explorer provided by D-Link Australia

https://192.168.101.scp-bin/platform.cgi Certificate Error Bing

Product Page: DSR-500N Hardware Version: A1 Firmware Version: 1.02B11

D-Link

DSR-500N // SETUP ADVANCED TOOLS STATUS HELP

Application Rules Website Filter Firewall Settings Wireless Settings Advanced Network Routing Certificates Users IP/MAC Binding IPv6 Radius Settings Power Saving

USERS LOGOUT

This page shows a list of available users in the system. A user can add, delete and edit the users also. This page can also be used for setting policies on users.

List of Users

<input type="checkbox"/>	User Name	Group	Type	Authentication Domain	Login Status
<input type="checkbox"/>	admin *	SSLVPN	Administrator	Local User Database	Enabled (LAN and WAN)
<input type="checkbox"/>	guest *	SSLVPN	Guest	Local User Database	Disabled

Edit Delete Add

Login Policies Policies By Browsers Policies By IP

Helpful Hints... Authentication of the users (IPsec, SSL VPN, or GUI) is done by the router using either a local database on the router or external authentication servers (i.e. LDAP or RADIUS). User level policies can be specified by browser, IP address of the host, and whether the user can login to the router's GUI in addition to the SSL VPN portal. More...

Done Internet | Protected Mode: Off 100%

D-Link : Unified Services Router - Microsoft Internet Explorer provided by D-Link Australia

Product Page: DSR-500N Hardware Version: A1 Firmware Version: 1.02B11

D-Link

DSR-500N // SETUP ADVANCED TOOLS STATUS HELP

Application Rules Website Filter Firewall Settings Wireless Settings Advanced Network Routing Certificates Users IP/MAC Binding IPv6 Radius Settings Power Saving

USERS CONFIGURATION

LOGOUT

This page allows a user to add new system users.

Save Settings Don't Save Settings

Users Configuration

User Name:

First Name:

Last Name:

User Type:

- SSL VPN User
- Administrator
- Guest (readonly)
- XAuth User
- L2TP User
- PPTP User
- Local User

Select Group:

Password:

Confirm Password:

Idle Timeout: (Minutes)

Helpful Hints... This page provides a consolidated database, where you can add different types of system users and then can associate them with different domains. More...

Done Internet | Protected Mode: Off 100%

D-Link : Unified Services Router - Microsoft Internet Explorer provided by D-Link Australia

Product Page: DSR-500N Hardware Version: A1 Firmware Version: 1.02B11

D-Link

DSR-500N // SETUP ADVANCED TOOLS STATUS HELP

Application Rules Website Filter Firewall Settings Wireless Settings Advanced Network Routing Certificates Users IP/MAC Binding IPv6 Radius Settings Power Saving

IP/MAC BINDING

LOGOUT

The table lists all the currently defined IP/MAC Bind rules and allows several operations on the rules.

List of IP/MAC Binding

<input type="checkbox"/>	Name	MAC Address	IP Address	Log Dropped Packets
<input type="button" value="Edit"/> <input type="button" value="Delete"/> <input type="button" value="Add"/>				

Helpful Hints... This feature allows protection against spoofed IP addresses by enforcing the gateway to validate the source traffic's IP address with the unique MAC Address of the configured LAN node. In the event of a violation (i.e. the traffic's source IP address doesn't match up with the expected MAC address having the same IP address) the packets will be dropped and can be logged for diagnosis. More...

UNIFIED SERVICES ROUTER

Copyright © 2010 D-Link Corporation.

Internet | Protected Mode: Off 100%

D-Link : Unified Services Router - Microsoft Internet Explorer provided by D-Link Australia

Product Page: DSR-500N Hardware Version: A1 Firmware Version: 1.02B11

D-Link

DSR-500N	SETUP	ADVANCED	TOOLS	STATUS	HELP
----------	-------	----------	-------	--------	------

- Application Rules
- Website Filter
- Firewall Settings
- Wireless Settings
- Advanced Network
- Routing
- Certificates
- Users
- IP/MAC Binding
- IPv6
- Radius Settings
- Power Saving

IP/MAC BINDING CONFIGURATION

This page allows you to add a new IP/MAC Bind rule. The details will then be displayed in the List of IP/MAC Bind rules table.

[Save Settings](#) [Don't Save Settings](#)

IP/MAC Binding Configuration

Name:

MAC Address:

IP Address:

Log Dropped Packets:

Helpful Hints...

You can enable/disable the logging associated with each IP/Mac binding rule.

[More...](#)

UNIFIED SERVICES ROUTER

Copyright © 2010 D-Link Corporation.

Done Internet | Protected Mode: Off 100%

D-Link : Unified Services Router - Microsoft Internet Explorer provided by D-Link Australia

Product Page: DSR-500N Hardware Version: A1 Firmware Version: 1.02B11

D-Link

DSR-500N	SETUP	ADVANCED	TOOLS	STATUS	HELP
----------	-------	----------	-------	--------	------

- Application Rules
- Website Filter
- Firewall Settings
- Wireless Settings
- Advanced Network
- Routing
- Certificates
- Users
- IP/MAC Binding
- IPv6
- Radius Settings
- Power Saving

IP MODE

This page allows user to configure the IP protocol version to be used on the router.

[Save Settings](#) [Don't Save Settings](#)

Routing Mode

IPv4 only mode:

IPv4 / IPv6 mode:

Link Local Connectivity:

Helpful Hints...

In order to support IPv6 on the LAN, you must set the router to be in IPv4 / IPv6 mode. This mode will allow IPv4 nodes to communicate with IPv6 devices through this router. Select Link Local Connectivity to map IPv4 addresses to a link-local IPv6 address.

[More...](#)

- IPv6 Static Routing
- 6to4 Tunneling
- IPv6 Tunnels Status
- ISATAP Tunnels

UNIFIED SERVICES ROUTER

Copyright © 2010 D-Link Corporation.

https://192.168.10.1/scgi-bin/platform.cgi?page=ipMode Internet | Protected Mode: Off 100%

D-Link : Unified Services Router - Microsoft Internet Explorer provided by D-Link Australia

https://192.168.101/scgi-bin/platform.cgi?page=... Certificate Error Bing

Product Page: DSR-500N Hardware Version: A1 Firmware Version: 1.02B11

DSR-500N // SETUP ADVANCED TOOLS STATUS HELP

Application Rules Website Filter Firewall Settings Wireless Settings Advanced Network Routing Certificates Users IP/MAC Binding IPv6 Radius Settings Power Saving

Please Set IP Mode to IPv4/IPv6 in [Routing Mode Page](#) to configure this page.

IPv6 WAN1 CONFIG LOGOUT

This page allows user to IPv6 related WAN1 configurations.

Save Settings Don't Save Settings

Internet Address

IPv6: DHCPv6

Static IP Address

IPv6 Address: []

IPv6 Prefix Length: []

Default IPv6 Gateway: []

Primary DNS Server: []

Secondary DNS Server: []

DHCPv6

Stateless Address Auto Configuration:

Stateful Address Auto Configuration:

Helpful Hints... This router can have a static IPv6 address or receive connection information when configured as a DHCPv6 client. The DHCPv6 client on the gateway can be either stateless or stateful. If a stateful client is selected the gateway will connect to the ISP's DHCPv6 server for a leased address. For stateless DHCP there need not be a DHCPv6 server available at the ISP, rather ICMPv6 discover messages will originate from this gateway and will be used for auto configuration.

UNIFIED SERVICES ROUTER

Copyright © 2010 D-Link Corporation.

Done Internet | Protected Mode: Off 100%

D-Link : Unified Services Router - Microsoft Internet Explorer provided by D-Link Australia

https://192.168.101/scgi-bin/platform.cgi?page=... Certificate Error Bing

Product Page: DSR-500N Hardware Version: A1 Firmware Version: 1.02B11

DSR-500N // SETUP ADVANCED TOOLS STATUS HELP

Application Rules Website Filter Firewall Settings Wireless Settings Advanced Network Routing Certificates Users IP/MAC Binding IPv6 Radius Settings Power Saving

Please Set IP Mode to IPv4/IPv6 in [Routing Mode Page](#) to configure this page.

IPv6 LAN CONFIG LOGOUT

This page allows user to IPv6 related LAN configurations.

Save Settings Don't Save Settings

LAN TCP/IP Setup

IPv6 Address: fec0::1

IPv6 Prefix Length: 64

Disable DHCPv6 Server

Stateless

IPv6 LAN IPv6 LAN Config []

IPv6 Static Routing Router Advertisement []

6to4 Tunneling Advertisement Prefixes []

IPv6 Tunnels Status []

ISATAP Tunnels []

Secondary DNS Server: []

Helpful Hints... The IPv6 address is 128 bits, with a default 64 bit prefix that defines the network and is common among all LAN hosts. Changes here affect all devices connected to the router's LAN switch. Note that a change to the default LAN IP address will require all LAN hosts to be in the same network prefix and use the new address to access this GUI.

https://192.168.101/scgi-bin/platform.cgi?page=lanConf Internet | Protected Mode: Off 100%

D-Link : Unified Services Router - Microsoft Internet Explorer provided by D-Link Australia

Product Page: DSR-500N Hardware Version: A1 Firmware Version: 1.02B11

D-Link

DSR-500N // SETUP ADVANCED TOOLS STATUS HELP

Application Rules Please Set IP Mode to IPv4/IPv6 in [Routing Mode Page](#) to configure this page.

Website Filter

Firewall Settings

Wireless Settings

Advanced Network

Routing

Certificates

Users

IP/MAC Binding

IPv6

Radius Settings

Power Saving

IPv6 LAN CONFIG LOGOUT

This page allows user to IPv6 related LAN configurations.

Save Settings Don't Save Settings

LAN TCP/IP Setup

IPv6 Address: fec0::1

IPv6 Prefix Length: 64

DHCPv6

DHCP Status: Disable DHCPv6 Server

DHCP Mode: Stateless

Domain Name: dlink.com

Server Preference: 255

DNS Servers: Use DNS Proxy

Primary DNS Server:

Secondary DNS Server:

Lease/Rebind Time: 86400 (Seconds)

List of IPv6 Address Pools

<input type="checkbox"/>	Start Address	End Address
<input type="checkbox"/>		

Edit Delete Add

Helpful Hints... The IPv6 address is 128 bits, with a default 64 bit prefix that defines the network and is common among all LAN hosts. Changes here affect all devices connected to the router's LAN switch. Note that a change to the default LAN IP address will require all LAN hosts to be in the same network prefix and use the new address to access this GUI.

Internet | Protected Mode: Off

D-Link : Unified Services Router - Microsoft Internet Explorer provided by D-Link Australia

Product Page: DSR-500N Hardware Version: A1 Firmware Version: 1.02B11

D-Link

DSR-500N // SETUP ADVANCED TOOLS STATUS HELP

Application Rules Please Set IP Mode to IPv4/IPv6 in [Routing Mode Page](#) to configure this page.

Website Filter

Firewall Settings

Wireless Settings

Advanced Network

Routing

Certificates

Users

IP/MAC Binding

IPv6

Radius Settings

Power Saving

RADVD LOGOUT

This page allows user to configure Router Advertisement Daemon (RADVD) related configurations.

Save Settings Don't Save Settings

Router Advertisement Daemon (RADVD)

RADVD Status: Disable

Advertise Mode: Unsolicited Multicast

Advertise Interval: 30

RA Flags:

Managed

Other

Router Preference: High

MTU: 1500

Router Lifetime: 3600 (Seconds)

Helpful Hints... Router Advertisements are analogous to IPv4 DHCP assignments for LAN clients. With this the router will perform stateless autoconfiguration of LAN nodes by assigning an IP address and supporting network information to devices that are configured to accept such details. By configuring the Router Advertisement Daemon on this router, the device will listen on the LAN for router solicitations and respond to these LAN hosts with router advertisements.

Done

Internet | Protected Mode: Off

D-Link : Unified Services Router - Microsoft Internet Explorer provided by D-Link Australia

https://192.168.101/cgi-bin/platform.cgi?pa... Certificate Error Bing

Product Page: DSR-500N Hardware Version: A1 Firmware Version: 1.02B11

D-Link

DSR-500N // SETUP ADVANCED TOOLS STATUS HELP

Application Rules Website Filter Firewall Settings Wireless Settings Advanced Network Routing Certificates Users IP/MAC Binding IPv6 Radius Settings Power Saving

ADVERTISEMENT PREFIXES LOGOUT

You must enable router advertisement in the Networking > IPv6 > Router Advertisement page before configuring advertisement prefixes.

This page allows user to configure IPv6 prefixes which will be used while advertisement.

List of Prefixes to Advertise

<input type="checkbox"/>	IPv6 Prefix	IPv6 Prefix Length	Life Time
<input type="button" value="Edit"/> <input type="button" value="Delete"/> <input type="button" value="Add"/>			

Helpful Hints...
The router advertisements configured with advertisement prefixes allow this router to inform hosts how to perform stateless address autoconfiguration. Router advertisements contain a list of subnet prefixes that allow the router to determine neighbors and whether the host is on the same link as the router.
More...

UNIFIED SERVICES ROUTER

Copyright © 2010 D-Link Corporation.

Done Internet | Protected Mode: Off 100%

D-Link : Unified Services Router - Microsoft Internet Explorer provided by D-Link Australia

https://192.168.101/cgi-bin/platform.cgi?pa... Certificate Error Bing

Product Page: DSR-500N Hardware Version: A1 Firmware Version: 1.02B11

D-Link

DSR-500N // SETUP ADVANCED TOOLS STATUS HELP

Application Rules Website Filter Firewall Settings Wireless Settings Advanced Network Routing Certificates Users IP/MAC Binding IPv6 Radius Settings Power Saving

IPv6 STATIC ROUTING LOGOUT

Please Set IP Mode to IPv4/IPv6 in Routing Mode Page to configure IPv6 Static Routes.

This page shows a list of IPv6 static routes added. A user can add, delete and edit the routes also.

List of IPv6 Static Routes

<input type="checkbox"/>	Name	Destination	Gateway	Interface	Metric	Active
<input type="button" value="Edit"/> <input type="button" value="Delete"/> <input type="button" value="Add"/>						

Helpful Hints...
Use this page to define static routes for the IPv6 related interfaces.
More...

UNIFIED SERVICES ROUTER

Copyright © 2010 D-Link Corporation.

Done Internet | Protected Mode: Off 100%

D-Link: Unified Services Router - Microsoft Internet Explorer provided by D-Link Australia

Product Page: DSR-500N Hardware Version: A1 Firmware Version: 1.02B11

D-Link

DSR-500N	SETUP	ADVANCED	TOOLS	STATUS	HELP
----------	-------	----------	-------	--------	------

Application Rules

Website Filter

Firewall Settings

Wireless Settings

Advanced Network

Routing

Certificates

Users

IP/MAC Binding

IPv6

Radius Settings

Power Saving

6 TO 4 TUNNELING LOGOUT

Please Set IP Mode to IPv4/IPv6 in [Routing Mode Page](#) to configure this page.

This page allows user to enable/disable the 6 to 4 tunneling.

Save Settings Don't Save Settings

Enable Automatic Tunneling

Enable Automatic Tunneling

Helpful Hints...
With this option enabled IPv4 address information is embedded in IPv6 addresses on the LAN. This option is very common in network that use both IPv4 and IPv6 nodes.
More...

UNIFIED SERVICES ROUTER

Copyright © 2010 D-Link Corporation.

Done Internet | Protected Mode: Off 100%

D-Link: Unified Services Router - Microsoft Internet Explorer provided by D-Link Australia

Product Page: DSR-500N Hardware Version: A1 Firmware Version: 1.02B11

D-Link

DSR-500N	SETUP	ADVANCED	TOOLS	STATUS	HELP
----------	-------	----------	-------	--------	------

Application Rules

Website Filter

Firewall Settings

Wireless Settings

Advanced Network

Routing

Certificates

Users

IP/MAC Binding

IPv6

Radius Settings

Power Saving

RADIUS SERVER LOGOUT

This page configures the RADIUS servers to be used for authentication. A RADIUS server maintains a database of user accounts used in larger environments. If a RADIUS server is configured in the LAN, it can be used for authenticating users that want to connect to the wireless network provided by this device. If the first/primary RADIUS server is not accessible at any time, then the device will attempt to contact the secondary RADIUS server for user authentication.

Save Settings Don't Save Settings

Radius Server Configuration

Authentication Server IP Address (Primary): 192.168.12

Authentication Port: 1812

Secret:

Timeout: 1 (Seconds)

Retries: 2

Authentication Server IP Address (Secondary): 192.168.13

Authentication Port: 1812

Secret:

Timeout: 1 (Seconds)

Retries: 2

Helpful Hints...
The RADIUS server is an external authentication server that can be used to associate wireless clients to an AP using RADIUS authentication. This authentication is also referred to as Enterprise mode, and is available for WPA or WPA2 security.
More...

Internet | Protected Mode: Off 100%

D-Link : Unified Services Router - Microsoft Internet Explorer provided by D-Link Australia

Product Page: DSR-500N Hardware Version: A1 Firmware Version: 1.02B11

D-Link

DSR-500N	SETUP	ADVANCED	TOOLS	STATUS	HELP
Application Rules	<h3>POWER SAVING</h3> <p>This page allows user to enable/disable power saving in the router.</p> <p>Save Settings Don't Save Settings</p>				Helpful Hints... There are two options available to support power efficiency on the router. With Length Detection State enabled, the Ethernet cable link length will be detected by the router and power to the port will be modified accordingly. More...
Website Filter	<h3>Power Saving Options</h3> <p>Power Saving by Link Status: <input checked="" type="checkbox"/></p> <p>Power Saving by Cable Length: <input checked="" type="checkbox"/></p>				
Firewall Settings					
Wireless Settings					
Advanced Network					
Routing					
Certificates					
Users					
IP/MAC Binding					
IPv6					
Radius Settings					
Power Saving					

Internet | Protected Mode: Off

D-Link : Unified Services Router - Microsoft Internet Explorer provided by D-Link Australia

Product Page: DSR-500N Hardware Version: A1 Firmware Version: 1.02B11

D-Link

DSR-500N	SETUP	ADVANCED	TOOLS	STATUS	HELP
Admin	Admin Settings				Helpful Hints... The System Name identifies the router for node identification and remote logging. More...
Date and Time	Remote Management				
Log Settings	SNMP	<p>set the router identification name.</p> <p>Don't Save Settings</p>			
System	SNMP System Info				
Firmware					
Firmware via USB					
Dynamic DNS					
System Check					
Schedules					
	<h3>System Name</h3> <p>System Name: <input type="text" value="DSR-500N"/></p>				

Done

Internet | Protected Mode: Off

D-Link : Unified Services Router - Microsoft Internet Explorer provided by D-Link Australia

https://192.168.101/cgi-bin/platform.cgi?pa Certificate Error Bing

Product Page: DSR-500N Hardware Version: A1 Firmware Version: 1.02611

D-Link

DSR-500N	SETUP	ADVANCED	TOOLS	STATUS	HELP
----------	-------	----------	-------	--------	------

Admin

Date and Time

Log Settings

System

Firmware

Firmware via USB

Dynamic DNS

System Check

Schedules

REMOTE MANAGEMENT

LOGOUT

From this page a user can configure the remote management feature. This feature can be used to manage the box remotely from WAN side.

Save Settings Don't Save Settings

Remote Management Enable

Enable Remote Management:

Access Type: All IP Addresses

From: All IP Addresses
IP address range
Only this PC

To: _____

IP Address: _____

Port Number: 443

Enable Remote SNMP:

Helpful Hints... Both HTTPS and telnet access can be restricted to a subset of IP addresses. Administrator and Guest users are permitted to login to the GUI, and User Login Policies will allow remote management over HTTPS to take place as configured. More...

UNIFIED SERVICES ROUTER

Internet | Protected Mode: Off 100%

D-Link : Unified Services Router - Microsoft Internet Explorer provided by D-Link Australia

Product Page: DSR-500N Hardware Version: A1 Firmware Version: 1.02B11

D-Link

DSR-500N // SETUP ADVANCED TOOLS STATUS HELP

Admin ▾

Date and Time

Log Settings ▾

System

Firmware

Firmware via USB

Dynamic DNS

System Check

Schedules

SNMP

LOGOUT

Simple Network Management Protocol (SNMP) lets you monitor and manage your router from an SNMP manager. SNMP provides a remote means to monitor and control network devices, and to manage configurations, statistics collection, performance, and security.

SNMP v3 Users List

	Name	Privilege	Security level
<input type="checkbox"/>	admin	RWUSER	NoAuthNoPriv
<input type="checkbox"/>	guest	ROUSER	NoAuthNoPriv

Traps List

<input type="checkbox"/>	IP Address	Port	Community	SNMP Version
--------------------------	------------	------	-----------	--------------

Access Control List

<input type="checkbox"/>	IP Address	Subnet Mask	Community	Access Type
--------------------------	------------	-------------	-----------	-------------

Internet | Protected Mode: Off

D-Link : Unified Services Router - Microsoft Internet Explorer provided by D-Link Australia

Product Page: DSR-500N Hardware Version: A1 Firmware Version: 1.02B11

D-Link

DSR-500N // SETUP ADVANCED TOOLS STATUS HELP

Admin ▾

Date and Time

Log Settings ▾

System

Firmware

Firmware via USB

Dynamic DNS

System Check

Schedules

SNMP TRAPS CONFIGURATION

LOGOUT

This page allows user to configure the SNMP traps. User can specify the IP Address, Port, Community for a specified SNMP protocol version.

SNMP Configuration

IP Address:

Port:

Community:

Authentication Type: ▾

- v1
- v2c
- v3

UNIFIED SERVICES ROUTER

Copyright © 2010 D-Link Corporation.

Done

Internet | Protected Mode: Off

D-Link : Unified Services Router - Microsoft Internet Explorer provided by D-Link Australia

Product Page: DSR-500N Hardware Version: A1 Firmware Version: 1.02B11

D-Link

DSR-500N	SETUP	ADVANCED	TOOLS	STATUS	HELP
----------	-------	----------	-------	--------	------

Admin | Date and Time | Log Settings | System | Firmware | Firmware via USB | Dynamic DNS | System Check | Schedules

SNMP ACCESS CONTROL CONFIGURATION

This page allows user to add SNMP access control list. This list can be used to access the router using a SNMP browser.

Save Settings | Don't Save Settings

Access Control Configuration

IP Address:

Subnet Mask:

Community:

Access Type:

- rocommunity
- rwcommunity

UNIFIED SERVICES ROUTER

Copyright © 2010 D-Link Corporation.

Done | Internet | Protected Mode: Off | 100%

D-Link : Unified Services Router - Microsoft Internet Explorer provided by D-Link Australia

Product Page: DSR-500N Hardware Version: A1 Firmware Version: 1.02B11

D-Link

DSR-500N	SETUP	ADVANCED	TOOLS	STATUS	HELP
----------	-------	----------	-------	--------	------

Admin | Date and Time | Log Settings | System | Firmware | Firmware via USB | Dynamic DNS | System Check | Schedules

SNMP

This page displays the current SNMP configuration of the router. The following MIB (Management Information Base) fields are displayed and can be modified here.

Save Settings | Don't Save Settings

SNMP System Information

SysContact:

SysLocation:

SysName:

UNIFIED SERVICES ROUTER

Internet | Protected Mode: Off | 100%

D-Link : Unified Services Router - Microsoft Internet Explorer provided by D-Link Australia

Product Page: DSR-500N Hardware Version: A1 Firmware Version: 1.02611

D-Link

DSR-500N // SETUP ADVANCED TOOLS STATUS HELP

Admin Date and Time Log Settings System Firmware Firmware via USB Dynamic DNS System Check Schedules

DATE AND TIME

LOGOUT

This page allows us to set the date, time and NTP servers. Network Time Protocol (NTP) is a protocol that is used to synchronize computer clock time in a network of computers. Accurate time across a network is important for many reasons.

Save Settings Don't Save Settings

Date and Time

Current Router Time: Mon Mar 21 21:49:28 GMT 2011

Time Zone: (GMT+10:00) Canberra Melbourne Sydney

Enable Daylight Saving:

Configure NTP Servers:

Set Date and Time Manually:

NTP Servers Configuration

Default NTP Server:

Custom NTP Server:

Primary NTP Server:

Secondary NTP Server:

Set Date And Time

Year	Month	Day	Hours	Min	Sec
2011	03	21	21	49	28

Internet | Protected Mode: Off

D-Link : Unified Services Router - Microsoft Internet Explorer provided by D-Link Australia

Product Page: DSR-500N Hardware Version: A1 Firmware Version: 1.02611

D-Link

DSR-500N // SETUP ADVANCED TOOLS STATUS HELP

Admin Date and Time Log Settings System Firmware Firmware via USB Dynamic DNS System Check Schedules

LOGS FACILITY

LOGOUT

set the date and time for the router. User can use the automatic or manual date and his choice.

Remote Logging Don't Save Settings

Logs Facility

Facility: System

Display

Display and Send Logs

	Display in Event Log	Send to Syslog
Emergency:	<input type="checkbox"/>	<input type="checkbox"/>
Alert:	<input type="checkbox"/>	<input type="checkbox"/>
Critical:	<input type="checkbox"/>	<input type="checkbox"/>
Error:	<input type="checkbox"/>	<input type="checkbox"/>
Warning:	<input type="checkbox"/>	<input type="checkbox"/>
Notification:	<input type="checkbox"/>	<input type="checkbox"/>
Information:	<input type="checkbox"/>	<input type="checkbox"/>
Debugging:	<input type="checkbox"/>	<input type="checkbox"/>

UNIFIED SERVICES ROUTER

Copyright © 2010 D-Link Corporation.

Done Internet | Protected Mode: Off

D-Link : Unified Services Router - Microsoft Internet Explorer provided by D-Link Australia

Product Page: DSR-500N Hardware Version: A1 Firmware Version: 1.02811

D-Link

DSR-500N // SETUP ADVANCED TOOLS STATUS HELP

Admin Date and Time Log Settings System Firmware Firmware via USB Dynamic DNS System Check Schedules

LOGS FACILITY

LOGOUT

This page allows user to set the date and time for the router. User can use the automatic or manual date and settings depending upon his choice.

Save Settings Don't Save Settings

Logs Facility

Facility: System Kernel System Local Wireless Local I-UTM

Display and Send Logs

	Display in Event Log	Send to Syslog
Emergency:	<input type="checkbox"/>	<input type="checkbox"/>
Alert:	<input type="checkbox"/>	<input type="checkbox"/>
Critical:	<input type="checkbox"/>	<input type="checkbox"/>
Error:	<input type="checkbox"/>	<input type="checkbox"/>
Warning:	<input type="checkbox"/>	<input type="checkbox"/>
Notification:	<input type="checkbox"/>	<input type="checkbox"/>
Information:	<input type="checkbox"/>	<input type="checkbox"/>
Debugging:	<input type="checkbox"/>	<input type="checkbox"/>

UNIFIED SERVICES ROUTER

Copyright © 2010 D-Link Corporation.

Done Internet | Protected Mode: Off 100%

D-Link : Unified Services Router - Microsoft Internet Explorer provided by D-Link Australia

Product Page: DSR-500N Hardware Version: A1 Firmware Version: 1.02811

D-Link

DSR-500N // SETUP ADVANCED TOOLS STATUS HELP

Admin Date and Time Log Settings System Firmware Firmware via USB Dynamic DNS System Check Schedules

LOGS CONFIGURATION

LOGOUT

This page allows user to configure system wide log settings.

Save Settings Don't Save Settings

Routing Logs

	Accepted Packets	Dropped Packets
LAN to WAN:	<input type="checkbox"/>	<input type="checkbox"/>
WAN to LAN:	<input type="checkbox"/>	<input type="checkbox"/>
WAN to DMZ:	<input type="checkbox"/>	<input type="checkbox"/>
DMZ to WAN:	<input type="checkbox"/>	<input type="checkbox"/>
LAN to DMZ:	<input type="checkbox"/>	<input type="checkbox"/>
DMZ to LAN:	<input type="checkbox"/>	<input type="checkbox"/>

System Logs

All Unicast Traffic:

All Broadcast / Multicast Traffic:

Other Events Logs

Bandwidth Limit:

UNIFIED SERVICES ROUTER

Copyright © 2010 D-Link Corporation.

Internet | Protected Mode: Off 100%

D-Link : Unified Services Router - Microsoft Internet Explorer provided by D-Link Australia

http://192.168.101/cgi-bin/platform.cgi?ps Certificate Error Bing

Favorites D-Link: Unified Services Router

Date and Time
Log Settings
System
Firmware
Firmware via USB
Dynamic DNS
System Check
Schedules

REMOTE LOGGING CONFIGURATION

LOGOUT

This page allows user to configure the remote logging options for the router.

Save Settings Don't Save Settings

Log Options

Remote Log Identifier: DSR-500N

Enable E-Mail Logs

Enable E-Mail Logs:

E-Mail Server Address:

SMTP Port: 25

Return E-Mail Address:

Send to E-Mail Address(1):

Send to E-Mail Address(2): (Optional)

Send to E-Mail Address(3): (Optional)

Authentication with SMTP Server: None

User Name:

Password:

Respond to Identd from SMTP Server:

Send E-mail logs by Schedule

Unit: Never

Day: Sunday

Time: 1:00 (AM) (PM)

SYS LOG SERVER CONFIGURATION

	Name	SysLog Facility	SysLog Severity
<input type="checkbox"/>	SysLog Server1: <input type="text"/>	All	All
<input type="checkbox"/>	SysLog Server2: <input type="text"/>	All	All
<input type="checkbox"/>	SysLog Server3: <input type="text"/>	All	All
<input type="checkbox"/>	SysLog Server4: <input type="text"/>	All	All
<input type="checkbox"/>	SysLog Server5: <input type="text"/>	All	All

Done Internet | Protected Mode: Off 95%

D-Link : Unified Services Router - Microsoft Internet Explorer provided by D-Link Australia

http://192.168.101/cgi-bin/platform.cgi?ps Certificate Error Bing

Favorites D-Link: Unified Services Router

Product Page: DSR-500N Hardware Version: A1 Firmware Version: 1.02B11

D-Link

DSR-500N // SETUP ADVANCED TOOLS STATUS HELP

Admin
Date and Time
Log Settings
System
Firmware
Firmware via USB
Dynamic DNS
System Check
Schedules

SYSTEM

LOGOUT

This page allows user to do configuration related operations which includes backup, restore and factory default. This page also allows user to reboot the router.

Backup / Restore Settings

Save Current Settings: Backup

Restore Saved Settings: Browse

Restore

Factory Default settings: Default

Reboot: Reboot

Helpful Hints... You can back up the router's custom configuration settings to restore them to a different device or the same router after some other changes. Be very careful when reverting to factory default settings, as you will lose the router's custom configuration after this operation. More...

Done Internet | Protected Mode: Off 100%

D-Link : Unified Services Router - Microsoft Internet Explorer provided by D-Link Australia

Product Page: DSR-500N Hardware Version: A1 Firmware Version: 1.02B11

D-Link

DSR-500N	SETUP	ADVANCED	TOOLS	STATUS	HELP
Admin					Helpful Hints... The router's firmware can be upgraded here, and the current version is displayed on this page. Another useful feature is to check online for newer versions of firmware, which will update the status field. More...
Date and Time					
Log Settings	FIRMWARE LOGOUT				
System	This page allows user to upgrade/downgrade the router firmware. This page also shows the information regarding firmware version and build time.				
Firmware	Firmware Information				
Firmware via USB	Firmware Version: 1.02B11 Firmware Date: Thu Aug 5 12:48:26 2010				
Dynamic DNS	Firmware Upgrade				
System Check	Locate & select the upgrade file: <input type="text"/> <input type="button" value="Browse..."/> <input type="button" value="Upgrade"/>				
Schedules					

Done Internet | Protected Mode: Off 100%

D-Link : Unified Services Router - Microsoft Internet Explorer provided by D-Link Australia

Product Page: DSR-500N Hardware Version: A1 Firmware Version: 1.02B11

D-Link

DSR-500N	SETUP	ADVANCED	TOOLS	STATUS	HELP
Admin					Helpful Hints... Make sure that USB storage key is connected to the router. You can check the device status on 'Setup -> USB Settings' page. Please unmount the device before removing it from the router. More...
Date and Time					
Log Settings	FIRMWARE & CONFIGURATION (USB) LOGOUT				
System	This page allows user to upgrade the firmware, backup and restore the settings using a USB storage key.				
Firmware	USB				
Firmware via USB	<p style="color:red">Please connect a USB storage key</p> USB Drive Status: Not Connected Save a copy of current settings: <input type="button" value="Back Up"/> Select the upgrade file from your hard disk: <input type="text"/> <input type="button" value="Restore"/> <input type="button" value="Upload"/>				
Dynamic DNS					
System Check					
Schedules					

UNIFIED SERVICES ROUTER Internet | Protected Mode: Off 100%

D-Link : Unified Services Router - Microsoft Internet Explorer provided by D-Link Australia

Product Page: DSR-500N Hardware Version: A1 Firmware Version: 1.02B11

D-Link

DSR-500N	SETUP	ADVANCED	TOOLS	STATUS	HELP
Admin	DYNAMIC DNS LOGOUT				Helpful Hints... You can configure separate domain names for each of your WANs. The current WAN Mode is also displayed. Check this to see which WAN(s) are currently active. More...
Date and Time	Dynamic DNS (DDNS) is an Internet service that allows routers with varying public IP addresses to be located using Internet domain names. To use DDNS, you must setup an account with a DDNS provider such as DynDNS.com, DlinkDDNS.com or Oray.net. <input type="button" value="Save Settings"/> <input type="button" value="Don't Save Settings"/>				
Log Settings	WAN Mode				
System	Current WAN Mode: Use only single WAN port Dedicated WAN				
Firmware	Dedicated WAN (DDNS Status:)				
Firmware via USB	Select the Dynamic DNS Service: <input type="text" value="None"/>				
Dynamic DNS	Host and Domain Name: <input type="text"/>				
System Check	User Name: <input type="text"/>				
Schedules	Password: <input type="text"/>				
	<input type="checkbox"/> Use wildcards: <input type="checkbox"/> Update every 30 days:				
	Configurable WAN				
	Select the Dynamic DNS Service: <input type="text" value="None"/>				
	Host and Domain Name: <input type="text"/>				
	User Name: <input type="text"/>				
	Password: <input type="text"/>				
	<input type="checkbox"/> Use wildcards: <input type="checkbox"/> Update every 30 days:				

Done Internet | Protected Mode: Off 100%

D-Link : Unified Services Router - Microsoft Internet Explorer provided by D-Link Australia

Product Page: DSR-500N Hardware Version: A1 Firmware Version: 1.02B11

D-Link

DSR-500N	SETUP	ADVANCED	TOOLS	STATUS	HELP
Admin	SYSTEM CHECK LOGOUT				Helpful Hints... The router has built in tools to allow an administrator to evaluate the communication status and overall network health. Ping and Trace Route are two of the most frequently used tools to evaluate internet speed and connectivity. More...
Date and Time	This page can be used for diagnostics purpose. This page provides user with some diagnostic tools like ping, traceroute and packet sniffer.				
Log Settings	Ping or Trace an IP Address				
System	IP Address / Domain Name: <input type="text" value="www.dlink.com"/> <input type="button" value="Ping"/> <input type="button" value="Traceroute"/>				
Firmware	Perform a DNS Lookup				
Firmware via USB	Internet Name: <input type="text"/> <input type="button" value="Lookup"/>				
Dynamic DNS	Router Options				
System Check	<input type="button" value="Display"/> Display the IPv4 Routing Table:				
Schedules	<input type="button" value="Display"/> Display the IPv6 Routing Table:				
	<input type="button" value="Packet Trace"/> Capture Packets:				

UNIFIED SERVICES ROUTER

Internet | Protected Mode: Off 100%

D-Link : Unified Services Router - Microsoft Internet Explorer provided by D-Link Australia

https://192.168.101:1/cgi-bin/platform.cgi... Certificate Error Bing

Product Page: DSR-500N Hardware Version: A1 Firmware Version: 1.02611

D-Link

DSR-500N // SETUP ADVANCED TOOLS STATUS HELP

Admin Date and Time Log Settings System Firmware Firmware via USB Dynamic DNS System Check Schedules

SCHEDULES

LOGOUT

When you create a firewall rule, you can specify a schedule when the rule applies. The table lists all the Available Schedules for this device and allows several operations on the Schedules.

List of Available Schedules

<input type="checkbox"/>	Name	Days	Start Time	End Time
<input type="button" value="Edit"/> <input type="button" value="Delete"/> <input type="button" value="Add"/>				

Helpful Hints... Schedules are a very useful feature to allow firewall rules to be enabled or disabled based on the time of day or day of the week. Configured schedules will be available to select in the firewall rule configuration page. All schedules will follow the time in the routers configured time zone. More...

Internet | Protected Mode: Off 100%

D-Link : Unified Services Router - Microsoft Internet Explorer provided by D-Link Australia

https://192.168.101:1/cgi-bin/platform.cgi... Certificate Error Bing

Product Page: DSR-500N Hardware Version: A1 Firmware Version: 1.02611

D-Link

DSR-500N // SETUP ADVANCED TOOLS STATUS HELP

Admin Date and Time Log Settings System Firmware Firmware via USB Dynamic DNS System Check Schedules

SCHEDULE CONFIGURATION

LOGOUT

This page allows user to configure schedules. These schedules then can be applied to firewall rules to achieve schedule based firewall.

Schedule Name

Name:

Scheduled Days

Do you want this schedule to be active on all days or specific days?

Monday: Tuesday: Wednesday: Thursday: Friday: Saturday: Sunday:

Scheduled Time of Day

Do you want this schedule to be active all day or at specific times during the day?

Start Time:

Hour: Minute: AM

End Time:

Hour: Minute: AM

Helpful Hints... Schedules are a very useful feature to allow firewall rules to be enabled or disabled based on the time of day or day of the week. Configured schedules will be available to select in the firewall rule configuration page. All schedules will follow the time in the routers configured time zone. More...

Done Internet | Protected Mode: Off 100%

D-Link : Unified Services Router - Microsoft Internet Explorer provided by D-Link Australia

https://192.168.10.1/cgi-bin/ Certificate Error Bing

Product Page: DSR-500N Hardware Version: A1 Firmware Version: 1.02B11

D-Link

DSR-500N // SETUP ADVANCED TOOLS STATUS HELP

Device Info

Logs

Traffic Monitor

Active Sessions

Wireless Clients

LAN Clients

Active VPNs

Helpful Hints...
All of your Internet and network connection details are displayed on the Device Status page. The firmware version and hardware serial number is also displayed here.
[More...](#)

DEVICE STATUS

LOGOUT

This page displays the current settings and displays a snapshot of the system information.

General

System Name:	DSR-500N
Firmware Version:	1.02B11
Serial Number:	Q85M1A8000001

WAN1 Information

MAC Address:	00:18:E7:D9:F4:6C
IPv4 Address:	0.0.0.0 / 255.255.255.0
IPv6 Address:	
Wan State:	DOWN
NAT (IPv4 only):	Enabled
IPv4 Connection Type:	Dynamic IP (DHCP)
IPv6 Connection Type:	IPv6 is disabled
IPv4 Connection State:	Not Yet Connected
IPv6 Connection State:	IPv6 is disabled
Link State:	LINK DOWN
WAN Mode:	Use only single WAN port: Dedicated WAN
Gateway:	0.0.0.0
Primary DNS:	0.0.0.0
Secondary DNS:	0.0.0.0
Primary DNS(IPv6):	
Secondary DNS(IPv6):	

WAN2 Information

MAC Address:	00:18:E7:D9:F4:6D
IPv4 Address:	0.0.0.0 / 255.255.255.0
IPv6 Address:	
Wan State:	DOWN
NAT (IPv4 only):	Enabled
IPv4 Connection Type:	Dynamic IP (DHCP)

Done Internet | Protected Mode: Off 85%

D-Link : Unified Services Router - Microsoft Internet Explorer provided by D-Link Australia

https://192.168.10.1/cgi-bin Certificate Error Bing

D-Link : Unified Services Router

Secondary DNS: 0.0.0.0
 Primary DNS(IPv6):
 Secondary DNS(IPv6):

WAN2 Information

MAC Address: 00:18:E7:D9:F4:6D
 IPv4 Address: 0.0.0.0 / 255.255.255.0
 IPv6 Address:
 Wan State: DOWN
 NAT (IPv4 only): Enabled
 IPv4 Connection Type: Dynamic IP (DHCP)
 IPv6 Connection Type: IPv6 is disabled
 IPv4 Connection State: Not Yet Connected
 IPv6 Connection State: IPv6 is disabled
 Link State: LINK DOWN
 WAN Mode: Use only single WAN port: Dedicated WAN
 Gateway: 0.0.0.0
 Primary DNS: 0.0.0.0
 Secondary DNS: 0.0.0.0
 Primary DNS(IPv6):
 Secondary DNS(IPv6):

LAN Information

MAC Address: 00:18:E7:D9:F4:6B
 IP Address: 192.168.10.1 / 255.255.255.0
 IPv6 Address:
 DHCP Server: Enabled
 DHCP Relay: Disabled
 DHCPv6 Server: IPv6 is disabled

Wireless LAN

Operating Frequency: 2.4GHz
 Mode: N/G-Mixed
 Channel: 1 - 2.412GHz

Available Access Points

SSID	SECURITY	ENCRYPTION	AUTHENTICATION
DSR-500N_1	WPA+WPA2	TKIP+CCMP	PSK
DSR-500N-2	WPA+WPA2	TKIP+CCMP	PSK

UNIFIED SERVICES ROUTER

Copyright © 2010 D-Link Corporation.

Done Internet | Protected Mode: Off 85%

D-Link : Unified Services Router - Microsoft Internet Explorer provided by D-Link Australia

https://192.168.10.1/sgn/b Certificate Error Bing

Product Page: DSR-500N Hardware Version: A1 Firmware Version: 1.02B11

D-Link

DSR-500N // SETUP ADVANCED TOOLS STATUS HELP

Device Info Logs Traffic Monitor Active Sessions Wireless Clients LAN Clients Active VPNs

DASHBOARD

LOGOUT

This page displays the resources being used in the system currently. This page also shows the bandwidth used in form of bar graphs.

Bandwidth Usage

Select Interface: ALL LAN WAN1 WAN2

Application	Bandwidth (KB)
HTTPS	330.0

Used Applications

Select Interface: ALL

Application	Percentage
HTTPS	100%

Helpful Hints... The hardware resources (CPU and memory) are profiled here and packet traffic through the router is displayed for each interface. More...

Done Internet | Protected Mode: Off 85%

D-Link : Unified Services Router - Microsoft Internet Explorer provided by D-Link Australia

https://192.168.10.1/scgi-bin/... Certificate Error Bing

Product Page: DSR-500N Hardware Version: A1 Firmware Version: 1.02B11

D-Link

DSR-500N // SETUP ADVANCED TOOLS STATUS HELP

Device Info

Logs View All Logs LOGOUT

Traffic Monitor VPN Logs N (IPSEC) related log.

Active Sessions

Wireless Clients

LAN Clients

Active VPNs

Helpful Hints... This page displays the captured log messages specifically for IPsec events. The logs displayed on this event viewer can be defined in the Log Configuration page of the Log Settings menu. More...

Display Logs

2011-03-21 20:49:09: INFO: IKE started

Refresh Logs Clear Logs

UNIFIED SERVICES ROUTER

Copyright © 2010 D-Link Corporation.

https://192.168.10.1/scgi-bin/platform Internet | Protected Mode: Off 85%

D-Link : Unified Services Router - Microsoft Internet Explorer provided by D-Link Australia

https://192.168.10.1/scgi-bin/... Certificate Error Bing

Product Page: DSR-500N Hardware Version: A1 Firmware Version: 1.02B11

D-Link

DSR-500N // SETUP ADVANCED TOOLS STATUS HELP

Device Info

Logs

Traffic Monitor

Active Sessions

Wireless Clients

LAN Clients

Active VPNs

Helpful Hints... Use this page to check the wired interface statistics of your router. This covers the LAN, VLAN, dedicated WAN, and configurable port (WAN or DMZ) ports of the router. More...

The page will auto-refresh in 1 seconds

DEVICE STATISTICS LOGOUT

Device Statistics Tx packet and byte count for all the system interfaces. It also shows the up time

Wireless Statistics

System up Time : 0 days, 1 hours, 11 minutes, 47 seconds

Port Statistics

Port	Tx Pkts	Rx Pkts	Collisions	Tx B/s	Rx B/s	Up time
Dedicated WAN	241	0	0	0	0	Not Yet Available
Configurable Port (WAN)	2	0	0	0	0	Not Yet Available
LAN	3447	4924	0	0	0	0 Days 01:10:23

Poll Interval: 10 (Seconds) Start Stop

UNIFIED SERVICES ROUTER

https://192.168.10.1/scgi-bin/platform Internet | Protected Mode: Off 85%

D-Link : Unified Services Router - Microsoft Internet Explorer provided by D-Link Australia

https://192.168.10.1/scgi-b Certificate Error Bing

Product Page: DSR-500N Hardware Version: A1 Firmware Version: 1.02B11

D-Link

DSR-500N // SETUP ADVANCED TOOLS STATUS HELP

Device Info Logs Traffic Monitor Active Sessions Wireless Clients LAN Clients Active VPNs

The page will auto-refresh in 6 seconds

WIRELESS STATISTICS LOGOUT

Wireless traffic statistics for all configured access points are displayed in this table. The receive (Rx) and transmit (Tx) data is shown per configured AP.

Wireless Statistics

AP Name	Radio	Packets		Bytes		Errors		Dropped		Multicast	Collisions
		rx	tx	rx	tx	rx	tx	rx	tx		
ap1	1	0	0	0	0	0	0	0	1893	0	0
MyNetwork	1	0	0	0	0	0	0	0	1911	0	0

Poll Interval: (Seconds)

UNIFIED SERVICES ROUTER

Internet | Protected Mode: Off 85%

D-Link : Unified Services Router - Microsoft Internet Explorer provided by D-Link Australia

https://192.168.10.1/scgi-b Certificate Error Bing

Product Page: DSR-500N Hardware Version: A1 Firmware Version: 1.02B11

D-Link

DSR-500N // SETUP ADVANCED TOOLS STATUS HELP

Device Info Logs Traffic Monitor Active Sessions Wireless Clients LAN Clients Active VPNs

ACTIVE SESSIONS LOGOUT

This page displays a list of active sessions on your router.

Active Sessions

Local	Internet	Protocol	State
<input type="button" value="Refresh"/>			

UNIFIED SERVICES ROUTER

Internet | Protected Mode: Off 85%

D-Link : Unified Services Router - Microsoft Internet Explorer provided by D-Link Australia

Product Page: DSR-500N Hardware Version: A1 Firmware Version: 1.02B11

D-Link

DSR-500N // SETUP ADVANCED TOOLS STATUS HELP

Device Info ▶

Logs ▶

Traffic Monitor ▶

Active Sessions ▶

Wireless Clients

LAN Clients

Active VPNs

The page will auto-refresh in 0 seconds

WIRELESS CLIENTS

LOGOUT

This list identifies the wireless clients (or stations) currently connected to the Access Points configured and enabled on this device.

Helpful Hints... Displays the list of current wireless clients connected each enabled AP. More...

Connected Clients

AP Name	MAC Address	Radio	Security	Encryption	Authentication	Time Connected
Poll Interval: <input type="text" value="10"/> (Seconds) <input type="button" value="Start"/> <input type="button" value="Stop"/>						

UNIFIED SERVICES ROUTER

Done Internet | Protected Mode: Off 100%

D-Link : Unified Services Router - Microsoft Internet Explorer provided by D-Link Australia

Product Page: DSR-500N Hardware Version: A1 Firmware Version: 1.02B11

D-Link

DSR-500N // SETUP ADVANCED TOOLS STATUS HELP

Device Info ▶

Logs ▶

Traffic Monitor ▶

Active Sessions ▶

Wireless Clients

LAN Clients

Active VPNs

LAN CLIENTS

LOGOUT

This page displays a list of LAN clients connected to the router.

Helpful Hints... Displays the current wired clients connected to the router through the LAN interface. More...

List of LAN Clients

Name	IP Address	MAC Address
unknown	192.168.10.8	00:1A:4B:69:DE:FF
unknown	192.168.10.100	00:19:5B:CA:25:61

UNIFIED SERVICES ROUTER

Done Internet | Protected Mode: Off 100%

D-Link : Unified Services Router - Microsoft Internet Explorer provided by D-Link Australia

https://192.168.101/cgi-bin/platform.cgi?ip= Certificate Error Bing

Product Page: DSR-500N Hardware Version: A1 Firmware Version: 1.02611

D-Link

DSR-500N // SETUP ADVANCED TOOLS STATUS HELP

Device Info ▶

Logs ▶

Traffic Monitor ▶

Active Sessions ▶

Wireless Clients ▶

LAN Clients ▶

Active VPNs ▶

The page will auto-refresh in 3 seconds

ACTIVE VPN LOGOUT

This page displays the active VPN connections, IPSEC as well as SSL.

Active IPsec SAs

Policy Name	Endpoint	tx (KB)	tx (Packets)	State	Action

Active SSL VPN Connections

User Name	IP Address	Local PPP Interface	Peer PPP Interface IP	Connect Status

Poll Interval: (Seconds)

UNIFIED SERVICES ROUTER

Internet | Protected Mode: Off 100%