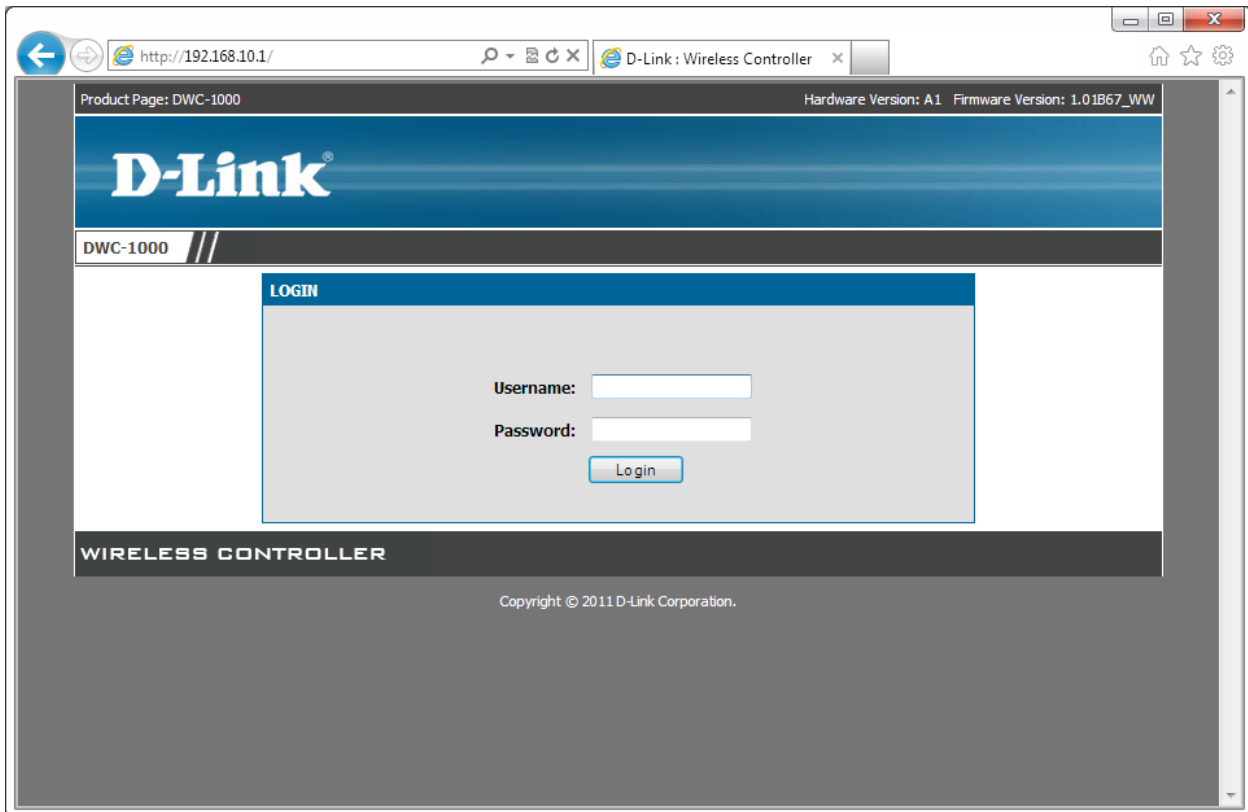


DWC-1000

Fw 1.01B67



192.168.10.1, admin/admin



Product Page: DWC-1000 Hardware Version: A1 Firmware Version: 1.01B67_WW

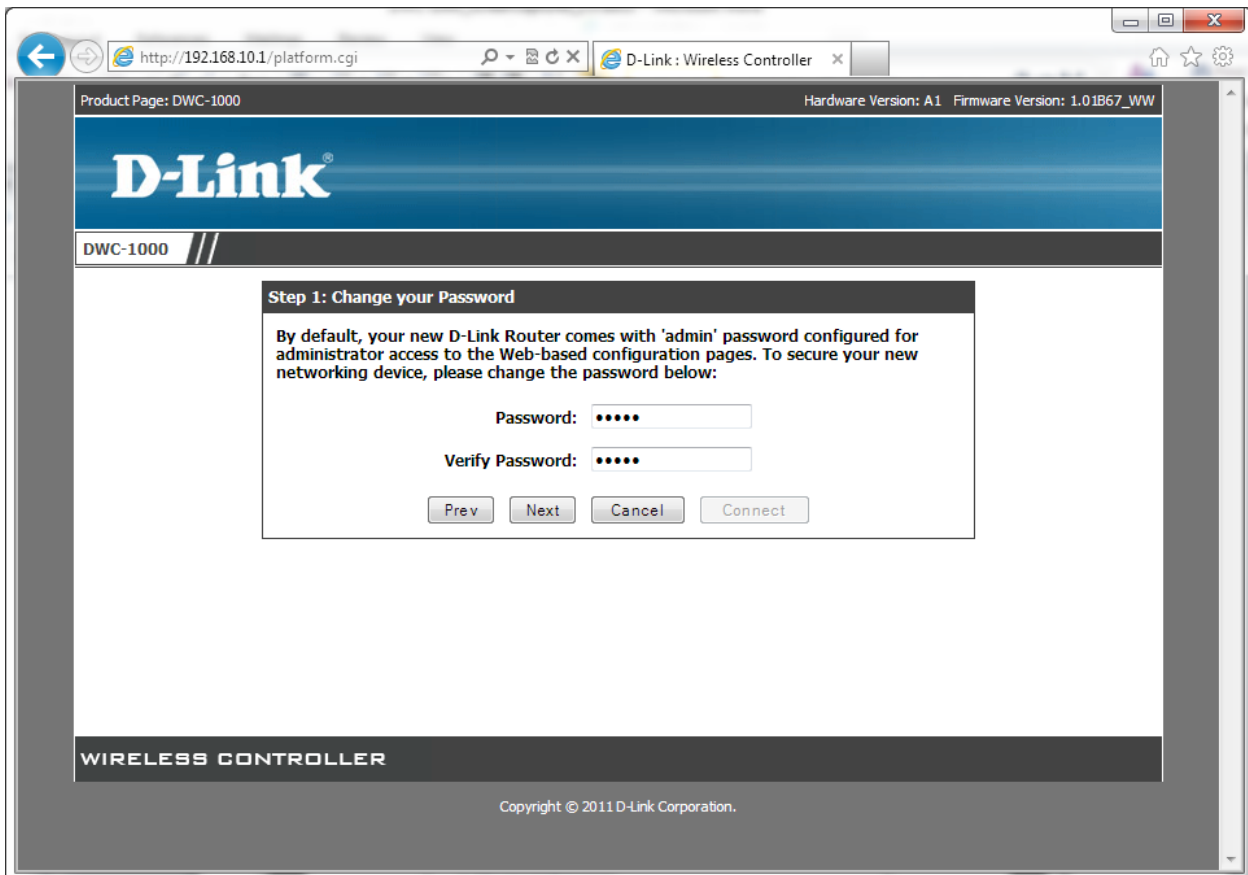
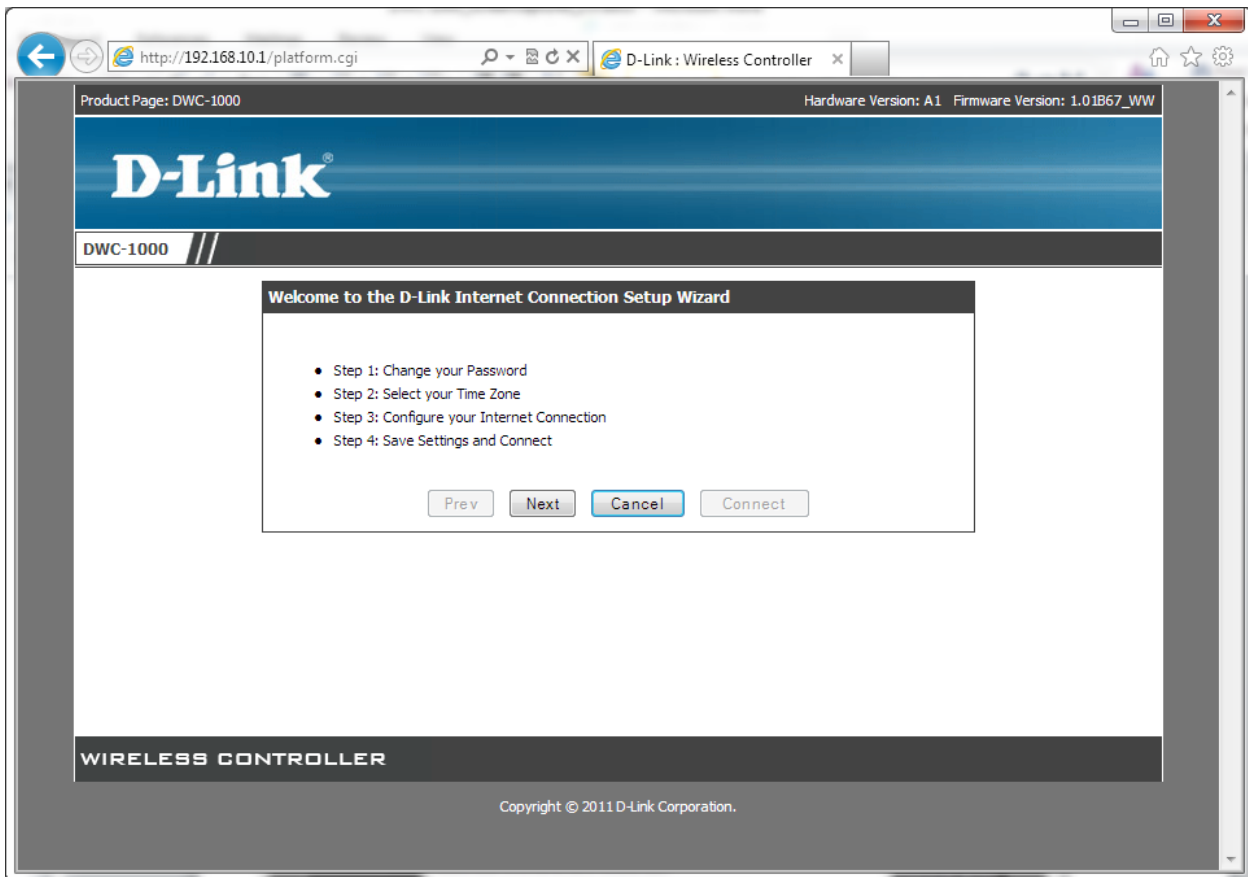
D-Link®

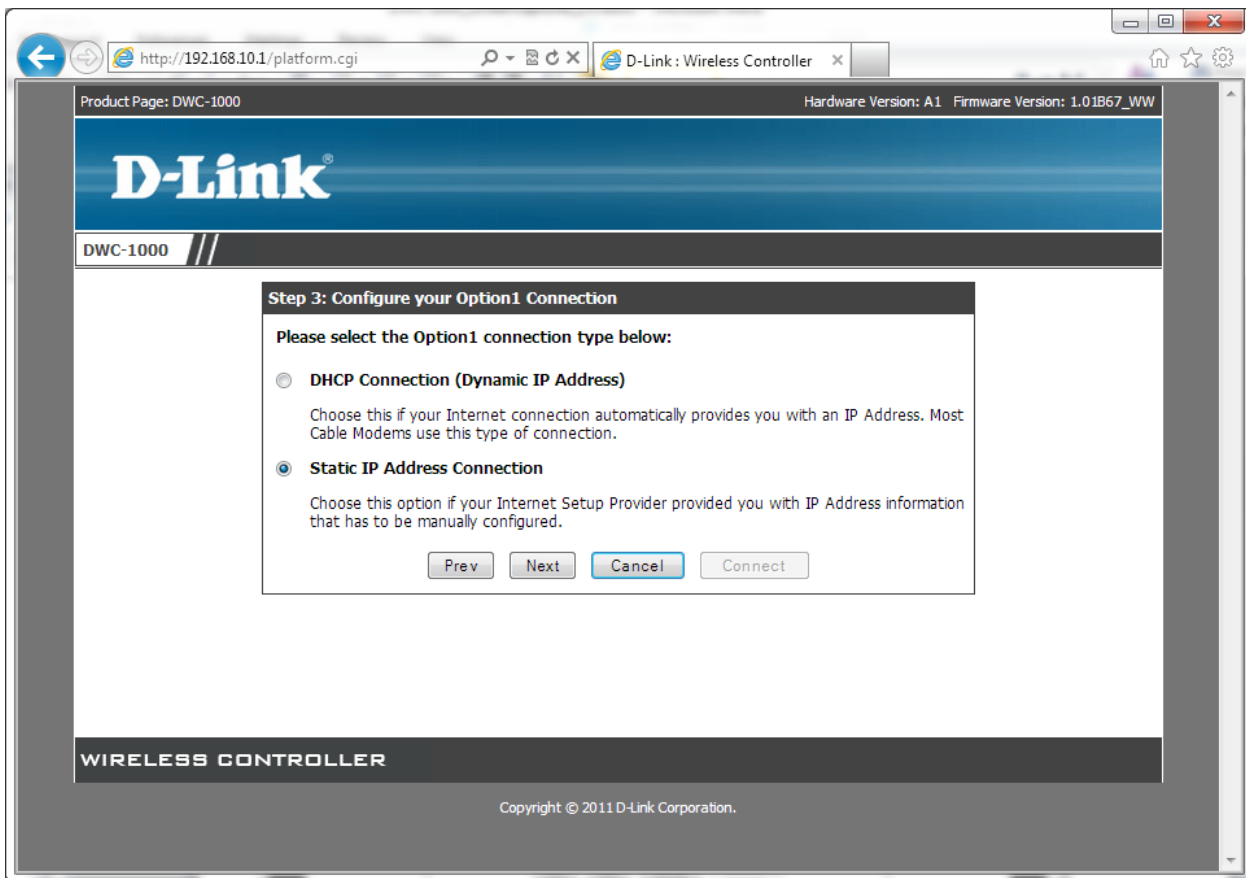
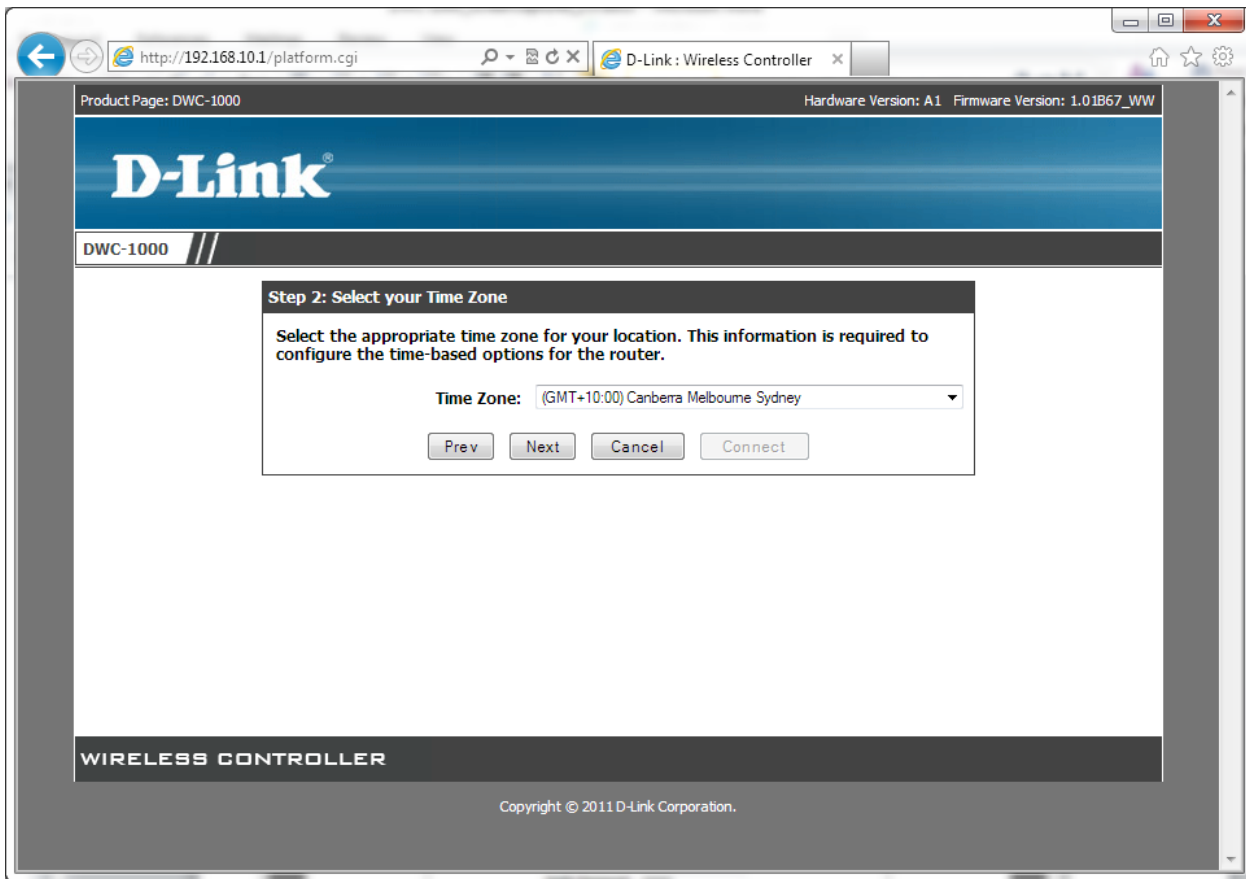
DWC-1000	SETUP	ADVANCED	TOOLS	STATUS	HELP
Wizard	System Setup				Helpful Hints... If you are new to networking and have never configured a router before, click on Internet Connection Setup Wizard and the router will run you through a few simple steps to get your network up and running. If you consider yourself an Advanced user and have configured a router before, click Manual Internet Connection Setup to input all the settings manually. More...
WLAN Global Settings	WLAN Setup Wizard ON				
AP Management	This page will guide you through common configuration tasks such as changing the password, timezone and setting up of your internet connection.				
WLAN Visualization	Internet Connection Setup Wizard				
Option Port Settings	If you would like to utilize our easy to use Web-based Wizards to assist you in connecting your new D-Link Systems Router to the Internet, click on the button below.				
Network Settings	<input type="button" value="Internet Connection Setup Wizard"/>				
LAN QoS	Note: Before launching these wizards, please make sure you have followed all steps outlined in the Quick Installation Guide included in the package.				
VLAN Settings	Manual Internet Connection Options				
USB Settings	If you would like to configure the Internet settings of your new D-Link Systems Router manually, then click on the button below.				
	<input type="button" value="Manual Internet Connection Setup"/>				

WIRELESS CONTROLLER

Copyright © 2011 D-Link Corporation.

http://192.168.10.1/platform.cgi?page=wanWizard.htm#





Product Page: DWC-1000 Hardware Version: A1 Firmware Version: 1.01B67_WW

D-Link®

DWC-1000 //

Set Static IP Address Connection

To set up this connection you will need to have a complete list of IP information provided by your Internet Service Provider. If you have a Static IP connection and do not have this information, please contact your ISP.

IP Address:

IP Subnet Mask:

Gateway IP Address:

DNS settings

Primary DNS Server:

Secondary DNS Server:

WIRELESS CONTROLLER

Copyright © 2011 D-Link Corporation.

Product Page: DWC-1000 Hardware Version: A1 Firmware Version: 1.01B67_WW

D-Link®

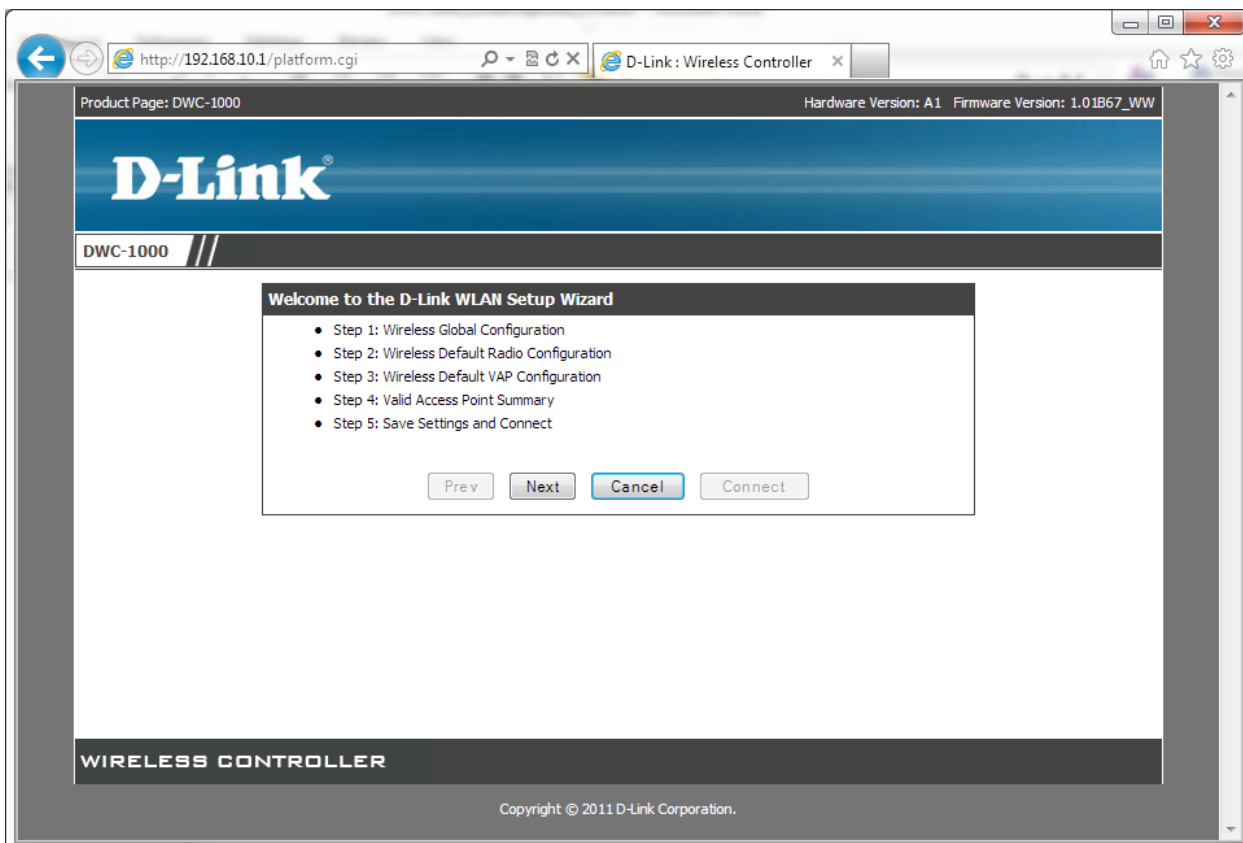
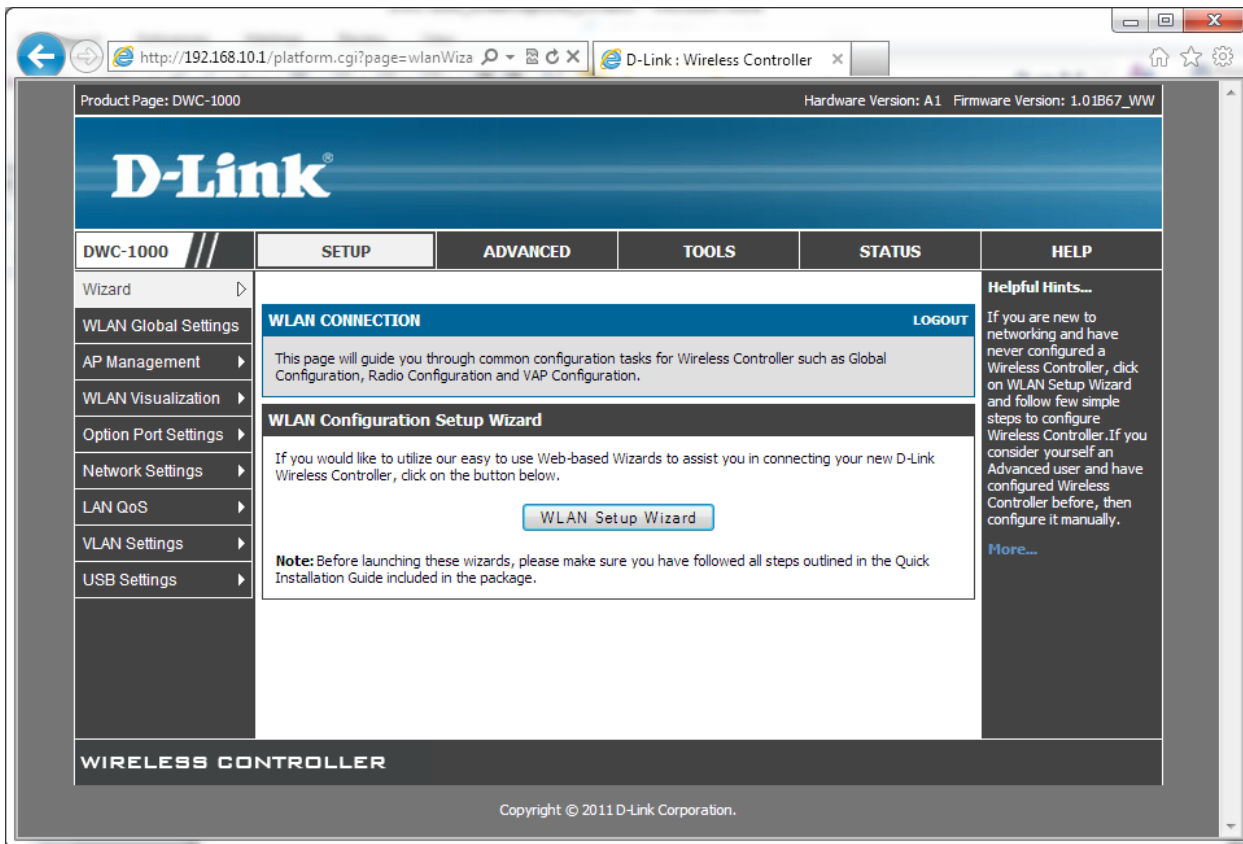
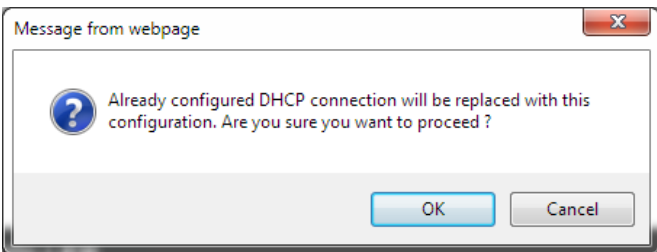
DWC-1000 //

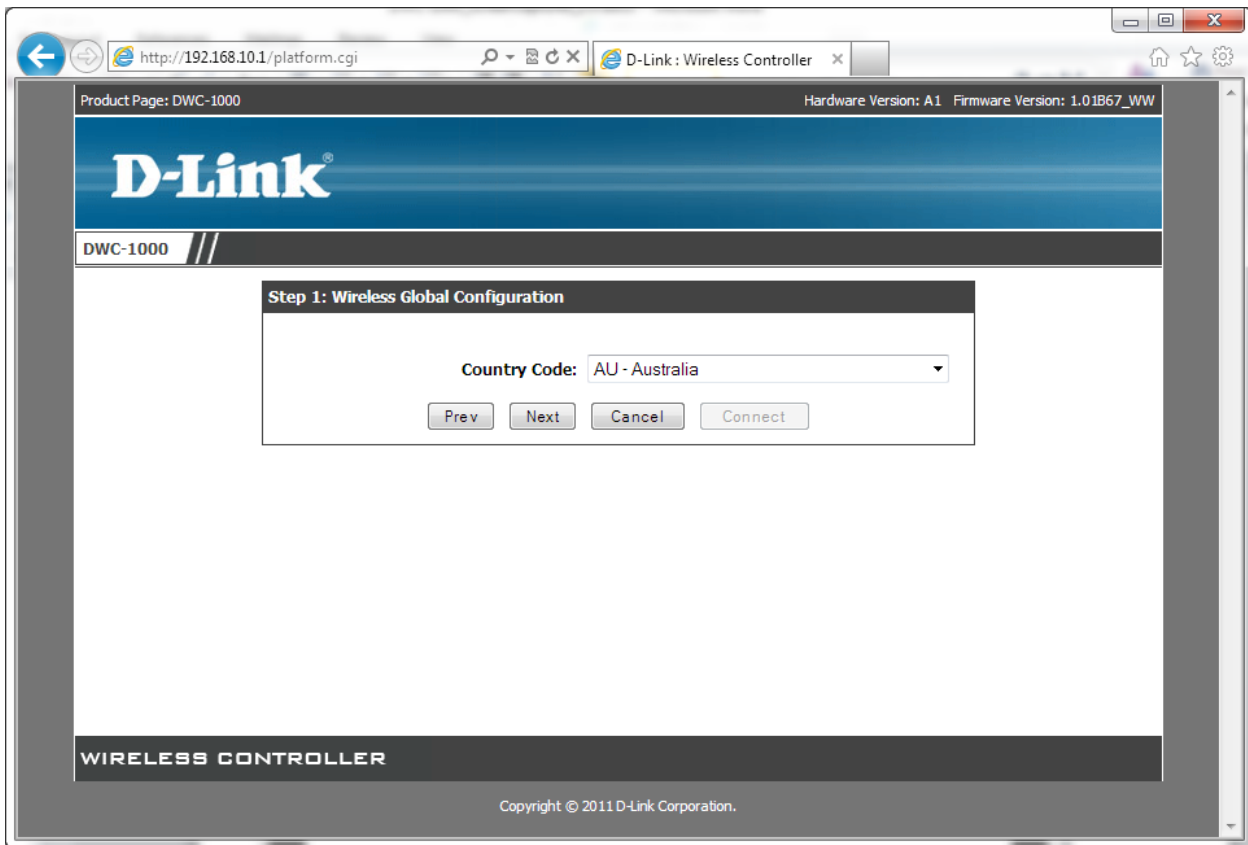
Setup Complete!

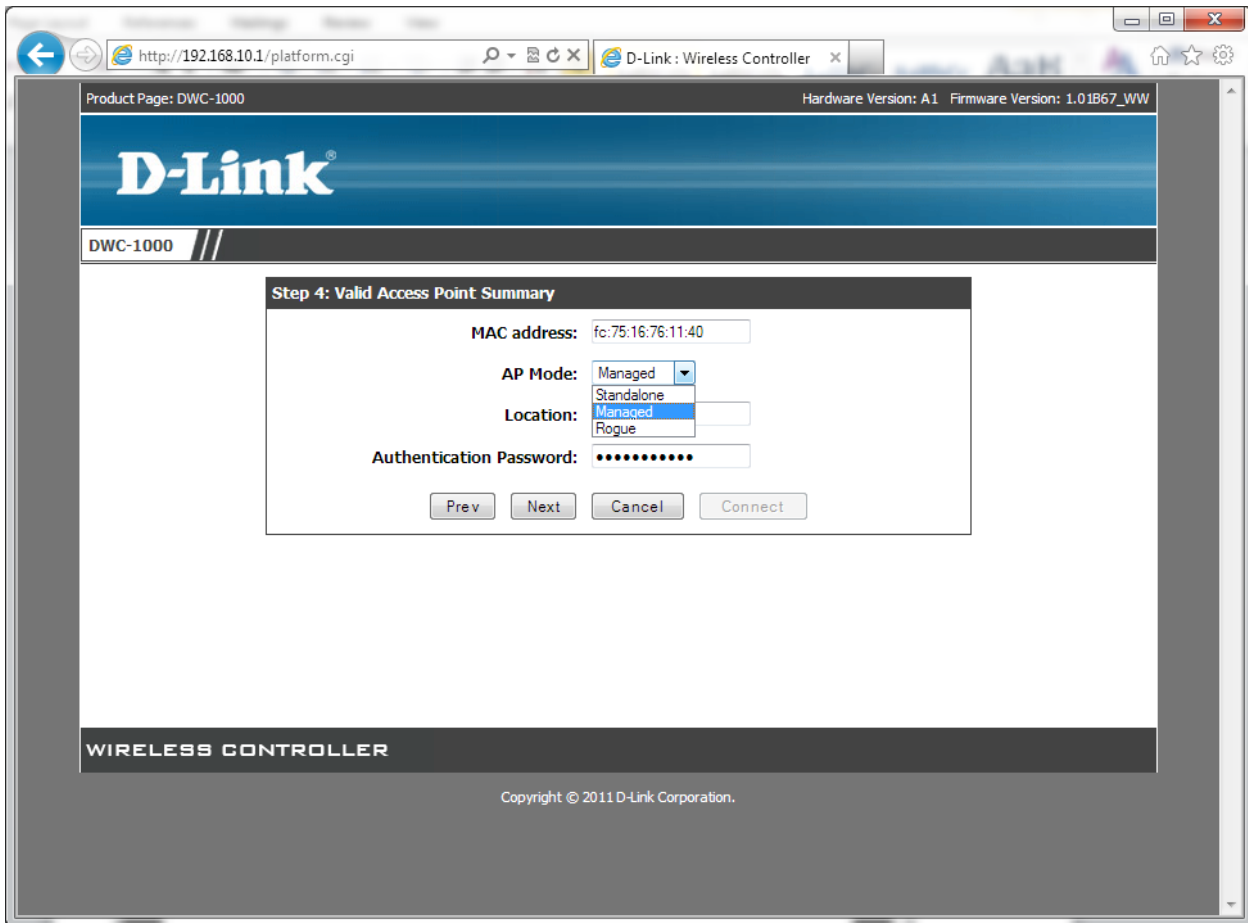
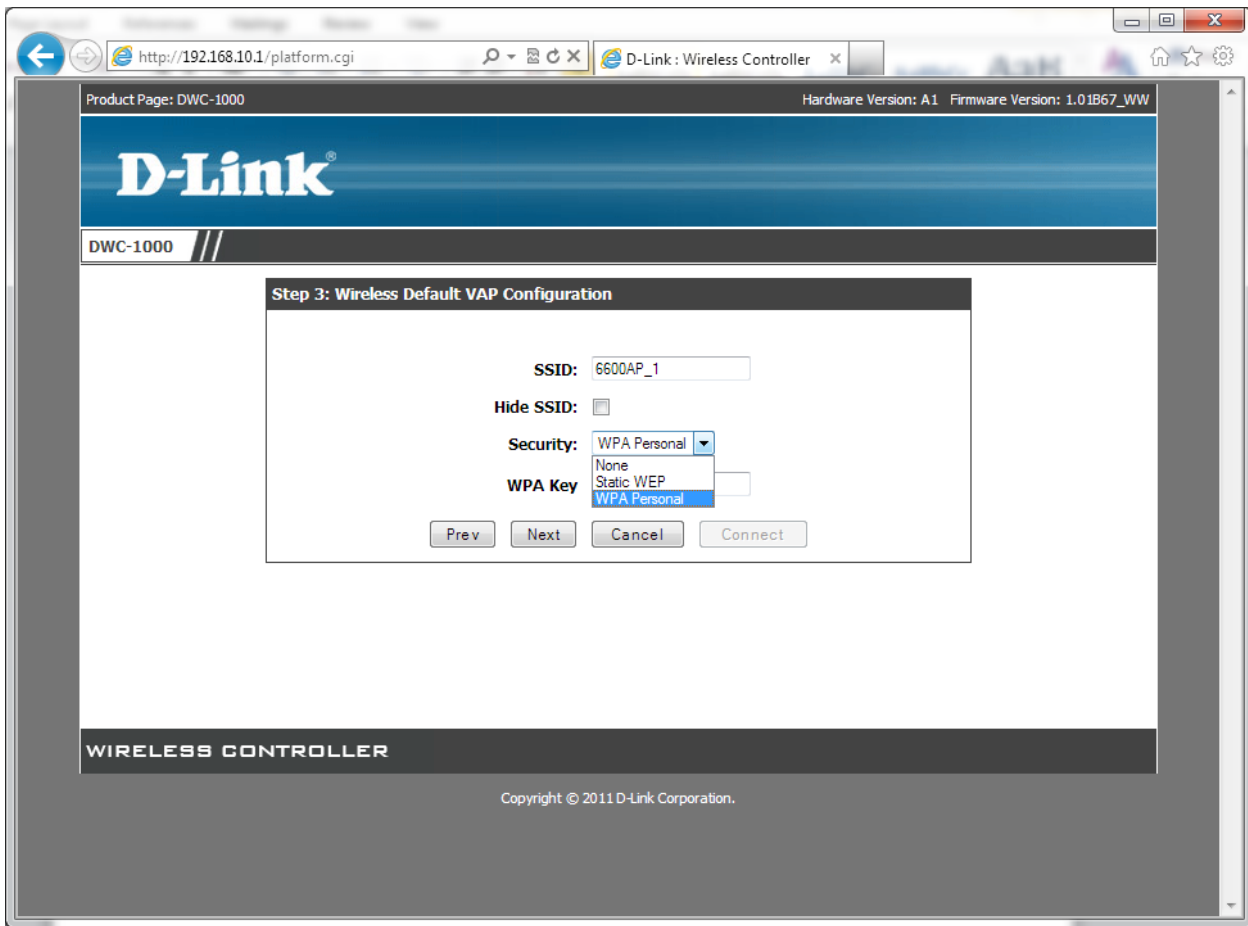
The Internet Connection Setup Wizard has completed. Click the Connect button to save your settings and connect.

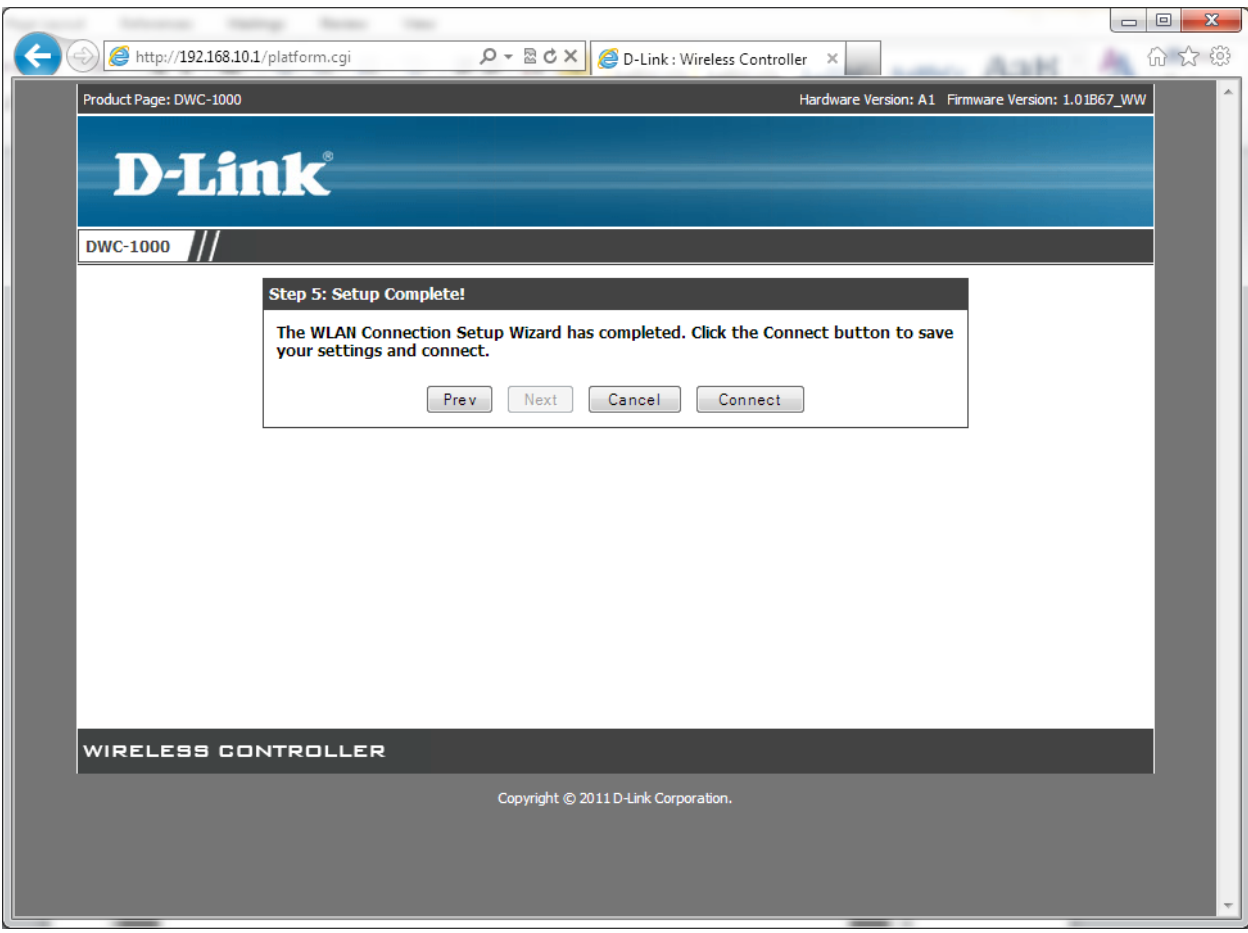
WIRELESS CONTROLLER

Copyright © 2011 D-Link Corporation.











DWC-1000 //	SETUP	ADVANCED	TOOLS	STATUS	HELP
--------------------	--------------	-----------------	--------------	---------------	-------------

- Wizard
- WLAN Global Settings
- AP Management
- WLAN Visualization
- Option Port Settings
- Network Settings
- LAN QoS
- VLAN Settings
- USB Settings

GLOBAL STATUS LOGOUT

This page will guide you through common and easy steps to configure your DWC-1000 router WLAN global settings. Make sure that WLAN controller is being enabled.

Wireless Global Configuration

Enable WLAN Controller

WLAN Controller Operational Status Enabled

IP Address: 192.168.0.10

AP Validation

AP MAC Validation: Local

Require Authentication Passphrase:

RADIUS Server Configuration

RADIUS Authentication Server Name: Default-RADIUS-Server

RADIUS Authentication Server Status: Not Configured

RADIUS Accounting Server Name: Default-RADIUS-Server

RADIUS Accounting Server Status: Not Configured

RADIUS Accounting:

Country Configuration

Country Code: AU - Australia

Helpful Hints...

In order for the Wireless Controller to be able to discover and manage access points, both the WLAN controller and its operational status must be enabled. However, before you enable the WLAN controller, set the correct country code for the controller so that the access points can operate only in the modes permitted in your country. The default country code is US for operation in the United States.

[More...](#)

Product Page: DWC-1000 Hardware Version: A1 Firmware Version: 1.01B67_WW

D-Link®

DWC-1000 // SETUP ADVANCED TOOLS STATUS HELP

Wizard

WLAN Global Settings **MANUAL MANAGEMENT** LOGOUT

AP Management Manual Management

WLAN Visualization Valid Access Points

Option Port Settings RF Management

Network Settings Software Download

LAN QoS Poll List

VLAN Settings AP Provisioning

USB Settings Local OUI Database

Location	Debug	Radio Interface	Channel	Power (%)
	Disabled	1-802.11a/n	36	100
		2-802.11b/g/n	1	100

Managed AP Debug Edit Channel/Power Refresh

Helpful Hints...

When the AP is in Managed mode, remote access to the AP is disabled. However, you can enable Telnet access by enabling the Debug feature. From the Managed APAdvanced Settings page, you can also manually change the RF channel and power for each radio on an AP. The manual power and channel changes override the settings configured in the AP profile (including automatic channel selection) and take effect immediately. The manual channel and power assignments are not retained when the AP is reset or if the profile is reapplied to the AP, such as when the AP disassociates and reassociates with the switch.

More...

192.168.0.10/managed_ap_advanced.html

Product Page: DWC-1000 Hardware Version: A1 Firmware Version: 1.01B67_WW

D-Link®

DWC-1000 // SETUP ADVANCED TOOLS STATUS HELP

Wizard

WLAN Global Settings **MANUAL MANAGEMENT** LOGOUT

AP Management AP managed by the Unified Wireless Switch is listed by its MAC address and location. The location is based on the value in the RADIUS or local Valid AP database.

WLAN Visualization

Option Port Settings

Network Settings

LAN QoS

VLAN Settings

USB Settings

List of Managed APs

<input type="checkbox"/>	MAC Address	Location	Debug	Radio Interface	Channel	Power (%)
<input checked="" type="checkbox"/>	fc:75:16:76:11:40		Disabled	1-802.11a/n	36	100
<input type="checkbox"/>				2-802.11b/g/n	1	100

Managed AP Debug Edit Channel/Power Refresh

Helpful Hints...

When the AP is in Managed mode, remote access to the AP is disabled. However, you can enable Telnet access by enabling the Debug feature. From the Managed APAdvanced Settings page, you can also manually change the RF channel and power for each radio on an AP. The manual power and channel changes override the settings configured in the AP profile (including automatic channel selection) and take effect immediately. The manual channel and power assignments are not retained when the AP is reset or if the profile is reapplied to the AP, such as when the AP disassociates and reassociates with the switch.

More...

192.168.0.10/managed_ap_advanced.html

D-Link : Wireless Controller x 192.168.0.10/local_ap_database_summ.html

Product Page: DWC-1000 Hardware Version: A1 Firmware Version: 1.01B67_WW

D-Link®

DWC-1000 //	SETUP	ADVANCED	TOOLS	STATUS	HELP
--------------------	--------------	-----------------	--------------	---------------	-------------

- Wizard ▾
- WLAN Global Settings ▾
- AP Management ▾
- WLAN Visualization ▾
- Option Port Settings ▾
- Network Settings ▾
- LAN QoS ▾
- VLAN Settings ▾
- USB Settings ▾

VALID AP LOGOUT

The Valid AP page contains information about APs configured in the local database.

List of Valid APs

<input type="checkbox"/>	MAC Address	Location	AP Mode	Profile
<input checked="" type="checkbox"/>	fc:75:16:76:11:40		Managed	1-Default

Helpful Hints...

After you enter the MAC address click Add to add the AP to the database with all other entries and to access the configuration page for the AP. For an AP that is already in the database, click its edit button to access its configuration page.

[More...](#)

WIRELESS CONTROLLER

Copyright © 2011 D-Link Corporation.

D-Link : Wireless Controller x 192.168.0.10/channel_pwr_cfg.html

Product Page: DWC-1000 Hardware Version: A1 Firmware Version: 1.01B67_WW

D-Link®

DWC-1000 //	SETUP	ADVANCED	TOOLS	STATUS	HELP
--------------------	--------------	-----------------	--------------	---------------	-------------

- Wizard ▾
- WLAN Global Settings ▾
- AP Management ▾
 - Manual Management
 - Valid Access Points
 - RF Management ▾
 - RF Configuration
 - Software Download
 - Poll List
 - AP Provisioning
 - Local OUI Database
- WLAN Visualization ▾
- Option Port Settings ▾
- Network Settings ▾
- LAN QoS ▾
- VLAN Settings ▾
- USB Settings ▾

RF CONFIGURATION LOGOUT

Manual Management configure AP radio frequency related values like channel configuration & Power

RF Configuration

Channel Plan History

Manual Channel Plan

Manual Power Adjustment Plan

5 GHz (802.11 a/n) 2.4 GHz (802.11 b/g/n)

Fixed Time Manual Interval

Channel Plan History Depth: (0 to 10)

Channel Plan Interval: (6 to 24) (Hours)

Channel Plan Fixed Time: : (Hours) : (Minutes)

Power Adjustment Configuration

Power Adjustment Mode: Manual Interval

Power Adjustment Interval: (Minutes) (15 to 1440)

Helpful Hints...

The radio frequency (RF) broadcast channel defines the portion of the radio spectrum that the radio on the access point uses for transmitting and receiving. The range of available channels for an access point is determined by the IEEE 802.11 mode of the access point. Each AP is a dual-band system capable of operating in multiple modes. IEEE 802.11b and 802.11g modes (802.11 b/g) operate in the 2.4 GHz RF frequency and support use of channels 1 through 11. IEEE 802.11a mode operates in the 5 GHz frequency and supports a larger set of non-consecutive channels (36, 40, 44, 48, 52, 56, 60, 64, 149, 153, 157, 161, 165). IEEE 802.11n mode can operate in either the 2.4 GHz or 5 GHz frequency.

192.168.0.10/channel_pwr_cfg.html#

Product Page: DWC-1000 Hardware Version: A1 Firmware Version: 1.01B67_WW

D-Link®

DWC-1000	SETUP	ADVANCED	TOOLS	STATUS	HELP
----------	-------	----------	-------	--------	------

- Wizard
- WLAN Global Settings
- AP Management
- WLAN Visualization
- Option Port Settings
- Network Settings
- LAN QoS
- VLAN Settings
- USB Settings

RF CONFIGURATION LOGOUT

Through this page we can configure AP radio frequency related values like channel configuration & Power Adjustment Configuration

Channel Configuration

Channel Plan: 5 GHz (802.11 a/n) 2.4 GHz (802.11 b/g/n)

Channel Plan Mode: Fixed Time Manual Interval

Channel Plan History Depth: (0 to 10)

Channel Plan Interval: (6 to 24) (Hours)

Channel Plan Fixed Time: : (Hours) : (Minutes)

Power Adjustment Configuration

Power Adjustment Mode: Manual Interval

Power Adjustment Interval: (Minutes) (15 to 1440)

Helpful Hints...

The radio frequency (RF) broadcast channel defines the portion of the radio spectrum that the radio on the access point uses for transmitting and receiving. The range of available channels for an access point is determined by the IEEE 802.11 mode of the access point. Each AP is a dual-band system capable of operating in multiple modes. IEEE 802.11b and 802.11g modes (802.11 b/g) operate in the 2.4 GHz RF frequency and support use of channels 1 through 11. IEEE 802.11a mode operates in the 5 GHz frequency and supports a larger set of non-consecutive channels (36,40,44, 48, 52, 56, 60, 64, 149, 153, 157, 161, 165). IEEE 802.11n mode can operate in either the 2.4 GHz or 5 GHz frequency.

[More...](#)

WIRELESS CONTROLLER

Product Page: DWC-1000 Hardware Version: A1 Firmware Version: 1.01B67_WW

D-Link®

DWC-1000	SETUP	ADVANCED	TOOLS	STATUS	HELP
----------	-------	----------	-------	--------	------

- Wizard
- WLAN Global Settings
- AP Management
- WLAN Visualization
- Option Port Settings
- Network Settings
- LAN QoS
- VLAN Settings
- USB Settings

CHANNEL PLAN HISTORY LOGOUT

The Unified Wireless Controller stores channel assignment information for the APs it manages.

Channel Plan

Channel Plan: 5 GHz (802.11 a/n) 2.4 GHz (802.11 b/g/n)

Channel Plan History

Operational Status	Active
Last Iteration	1
Last Algorithm Time	Feb 7 17:22:55 2011

List of Iterations

No Channel Plan history entries exists.	
---	--

Helpful Hints...

The Cluster Controller controller that controls the cluster maintains the channel history information for all controllers in the cluster. On the Cluster Controller, the page shows information about the radios on all APs managed by controllers in the cluster that are eligible for channel assignment and were successfully assigned a new channel.

[More...](#)

WIRELESS CONTROLLER

D-Link : Wireless Controller x 192.168.0.10/man_channel_status.html

Product Page: DWC-1000 Hardware Version: A1 Firmware Version: 1.01B67_WW

D-Link®

DWC-1000	SETUP	ADVANCED	TOOLS	STATUS	HELP
<ul style="list-style-type: none"> Wizard WLAN Global Settings AP Management WLAN Visualization Option Port Settings Network Settings LAN QoS VLAN Settings USB Settings 	<h2>MANUAL CHANNEL PLAN LOGOUT</h2> <p>If you specify Manual as the Channel Plan Mode on the Configuration tab, the Manual Channel Plan page allows you to initiate the channel plan algorithm.</p> <h3>Channel Plan</h3> <p> <input checked="" type="radio"/> 5 GHz (802.11 a/n) <input type="radio"/> 2.4 GHz (802.11 b/g/n) </p> <h3>Channel Plan Algorithm</h3> <p> Current Status: None <input type="button" value="Start"/> </p> <h3>Proposed Channel Assignments</h3> <p>No proposed channel plan entries exist.</p>				<p>Helpful Hints...</p> <p>To manually run the channel plan adjustment feature, select the radio to update the channels on (5 GHz or 2.4 GHz) and click Start. To apply the new channels, click Apply.</p> <p>More...</p>

WIRELESS CONTROLLER

Copyright © 2011 D-Link Corporation.

D-Link : Wireless Controller x 192.168.0.10/ManualPowerAdjustments.html

Product Page: DWC-1000 Hardware Version: A1 Firmware Version: 1.01B67_WW

D-Link®

DWC-1000	SETUP	ADVANCED	TOOLS	STATUS	HELP
<ul style="list-style-type: none"> Wizard WLAN Global Settings AP Management WLAN Visualization Option Port Settings Network Settings LAN QoS VLAN Settings USB Settings 	<h2>MANUAL POWER ADJUSTMENTS LOGOUT</h2> <p>You can manually initiate the power adjustment algorithm on the Manual Power Adjustments page.</p> <h3>Power Adjustment Algorithm</h3> <p> Current Status: None <input type="button" value="Start"/> </p> <h3>Proposed Power Adjustments</h3> <p>No proposed power adjustment entries exist.</p>				<p>Helpful Hints...</p> <p>If you select Manual as the Power Adjustment Mode on the Configuration tab, you can manually initiate the power adjustment algorithm on the Manual Power Adjustments page.</p> <p>More...</p>

WIRELESS CONTROLLER

Copyright © 2011 D-Link Corporation.



DWC-1000 //	SETUP	ADVANCED	TOOLS	STATUS	HELP
--------------------	--------------	-----------------	--------------	---------------	-------------

- Wizard
- WLAN Global Settings
- AP Management
- WLAN Visualization
- Option Port Settings
- Network Settings
- LAN QoS
- VLAN Settings
- USB Settings

SOFTWARE DOWNLOAD LOGOUT

The Unified Wireless Controller can upgrade software on the APs that it manages. The Cluster Controller can update code on APs managed by peer wireless controllers.

Access Point Software Download

Server Address:

Img_dwl8600 **DLink 8600 AP Radios**

File Path:

File Name:

Img_dwl3600/6600 **DLink 3600/6600 AP Radios**

File Path:

File Name:

Group Size: (1 to 6)

Image Download Type:

- All
- fc:75:16:76:11:40 - 192.168.0.11 -

Managed AP:

Helpful Hints...
After you provide the information about the upgrade file click Start to begin the upgrade process. Additional fields appear after the download begins and provide information about upgrade status and success.

[More...](#)

! *It may take about 12 minutes for the upgrade process to complete for an AP. After this process is complete, the AP will restart automatically and will become managed again.*

D-Link : Wireless Controller x
192.168.0.10/discovery_cfg.html

WLAN Global Settings
AP Management
WLAN Visualization
Option Port Settings
Network Settings
LAN QoS
VLAN Settings
USB Settings

POLL LIST LOGOUT

This page contain all the information about IP Address & Vlan value which can be configured for peer controllers & controllers. The IP Discovery list can contain the IP addresses of peer controller and APs for the UWS to discover and associate with as part of the WLAN

L3/IP Discovery
L2/VLAN Discovery

List of IP Addresses

192.168.0.10
192.168.0.11
192.168.0.12
192.168.0.13
192.168.0.14
192.168.0.15

IP Address Range **From** **To**

List of IP Vlans

1 - default

VLAN (1-255)

*Note: The discovered access points will fail to get managed by this wireless switch if their MAC addresses are not added to the Local or RADIUS AP Database. To add them to the local AP database, either navigate to the **Monitoring->Access Points ->All Access Points** page or to the **Valid AP** tab on this page. Before doing that make sure you complete the default profile configuration in the next 3 tabs. That profile will be sent to the AP.*

In order for the Unified Wireless Controller to discover other WLAN devices and establish communication with them, the devices must have their own IP address, must be able to find other WLAN devices, and must be compatible. When the Unified Wireless Controller discovers and validates APs, the controller takes over the management of the AP. If you configure the AP in Standalone mode, the existing AP configuration is replaced by the default AP Profile configuration on the controller. The list of IP addresses is separate and independent from the list of valid managed APs. Devices discovered through this list might not be valid APs or controllers.

[More...](#)

Product Page: DWC-1000 Hardware Version: A1 Firmware Version: 1.01B67_WW

D-Link®

DWC-1000 // SETUP ADVANCED TOOLS STATUS HELP

Wizard
 WLAN Global Settings
 AP Management
 WLAN Visualization
 Option Port Settings
 Network Settings
 LAN QoS
 VLAN Settings
 USB Settings

AP PROVISIONING SUMMARY STATUS LOGOUT

AP Provisioning Summary Status page shows information about all provisioned APs. The AP Provisioning Summary and Detail pages display data only when the controller is configured as the Cluster Controller.

AP Provisioning Status

	MAC Address (*)-Managed	IP Address	Primary IP Address	Backup IP Address	New Primary IP Address	New Backup IP Address	Status
<input checked="" type="checkbox"/>	* fc:75:16:76:11:40	192.168.0.11	192.168.0.10		192.168.0.10		Success

* - Only Unmanaged APs can be deleted.

WIRELESS CONTROLLER

Helpful Hints...
 The AP Provisioning feature helps you add new APs to an existing controller cluster. With AP Provisioning, you can configure the access points with parameters that are needed to connect to the wireless network.
[More...](#)

Edit:



DWC-1000 // SETUP ADVANCED TOOLS STATUS HELP

- Wizard
- WLAN Global Settings
- AP Management
- WLAN Visualization
- Option Port Settings
- Network Settings
- LAN QoS
- VLAN Settings
- USB Settings

AP PROVISIONING STATUS LOGOUT

Through edit button we can change the configuration setting of particular mac address. These are the extra things which we get after clicking.

Submit Don't Save Settings

AP Provisioning Status

MAC Address	FC:75:16:76:11:40
IP Address	192.168.0.11
Time Since Last Update	0d:00:00:04
Primary IP Address	192.168.0.10
Backup IP Address	0.0.0.0
Mutual Authentication Mode	Disable
Unmanaged AP Reprovisioning Mode	Disable
AP Provisioning Status	Success
AP Certificate and Profile Transmit Status	Not Started
New Primary IP Address	192.168.0.10
New Backup IP Address	0.0.0.0
Profile	1-Default

Delete Provision the AP Refresh

Helpful Hints...
This page show the AP Provisioning Status. We can also edit some fields like mac address.
More...

Product Page: DWC-1000 Hardware Version: A1 Firmware Version: 1.01B67_WW

D-Link®

DWC-1000	SETUP	ADVANCED	TOOLS	STATUS	HELP
----------	-------	----------	-------	--------	------

- Wizard
- WLAN Global Settings
- AP Management
- WLAN Visualization
- Option Port Settings
- Network Settings
- LAN QoS
- VLAN Settings
- USB Settings

LOCAL OUI DATABASE SUMMARY LOGOUT

From the Local OUI Database Summary page, you can enter up to 64 user-defined OUIs. The local list is searched first, so the same OUI can be located in the local list as well as the read-only list.

Note: No entries currently exist in the Local OUI Database. If desired, you can add new OUI entries.

Add to Database

OUI Value	<input type="text" value="00:00:00"/>
OUI Description	<input type="text"/>

Helpful Hints...

To help identify AP and Wireless Client adapter manufacturers detected in the wireless network, the wireless controller contains a database of registered Organizationally Unique Identifiers (OUIs). This is a read-only list with over 10,000 registrations.

[More...](#)

WIRELESS CONTROLLER

Copyright © 2011 D-Link Corporation.

Product Page: DWC-1000 Hardware Version: A1 Firmware Version: 1.01B67_WW

D-Link®

DWC-1000	SETUP	ADVANCED	TOOLS	STATUS	HELP
----------	-------	----------	-------	--------	------

- Wizard
- WLAN Global Settings
- AP Management
- WLAN Visualization
- Option Port Settings
- Network Settings
- LAN QoS
- VLAN Settings
- USB Settings

INTERNET CONNECTION LOGOUT

This page will guide you through common configuration tasks such as changing the password, timezone and setting up of your internet connection.

Launch

Internet Connection Setup Wizard

If you would like to utilize our easy to use Web-based Wizards to assist you in connecting your new D-Link Systems Router to the Internet, click on the button below.

Note: Before launching these wizards, please make sure you have followed all steps outlined in the Quick Installation Guide included in the package.

Manual Internet Connection Options

If you would like to configure the Internet settings of your new D-Link Systems Router manually, then click on the button below.

Helpful Hints...

If you are new to networking and have never configured a router before, click on Internet Connection Setup Wizard and the router will run you through a few simple steps to get your network up and running. If you consider yourself an Advanced user and have configured a router before, click Manual Internet Connection Setup to input all the settings manually.

[More...](#)

WIRELESS CONTROLLER

Copyright © 2011 D-Link Corporation.

Product Page: DWC-1000 Hardware Version: A1 Firmware Version: 1.01B67_WW

D-Link®

DWC-1000	SETUP	ADVANCED	TOOLS	STATUS	HELP
----------	-------	----------	-------	--------	------

- Wizard
- WLAN Global Settings
- AP Management
- WLAN Visualization
- Option Port Settings
 - Option Settings
 - Option Status
 - Option Setup
- Network Settings
- LAN QoS
- VLAN Settings
- USB Settings

INTERNET CONNECTION

This page will guide you through common configuration tasks such as changing the password, timezone and setting up of your internet connection.

If you would like to utilize Systems Router to the Internet, click on the Internet Connection Setup Wizard button.

Note: Before launching these wizards, please make sure you have followed all steps outlined in the Quick Installation Guide included in the package.

Manual Internet Connection Options

If you would like to configure the Internet settings of your new D-Link Systems Router manually, then click on the button below.

Helpful Hints...

If you are new to networking and have never configured a router before, click on Internet Connection Setup Wizard and the router will run you through a few simple steps to get your network up and running. If you consider yourself an Advanced user and have configured a router before, click Manual Internet Connection Setup to input all the settings manually.

[More...](#)

WIRELESS CONTROLLER

192.168.0.10/platform.cgi?page=wan1Status.htm Copyright © 2011 D-Link Corporation.

Product Page: DWC-1000 Hardware Version: A1 Firmware Version: 1.01B67_WW

D-Link®

DWC-1000	SETUP	ADVANCED	TOOLS	STATUS	HELP
----------	-------	----------	-------	--------	------

- Wizard
- WLAN Global Settings
- AP Management
- WLAN Visualization
- Option Port Settings
- Network Settings
- LAN QoS
- VLAN Settings
- USB Settings

OPTION1 STATUS

The page provides current information regarding the Option1 interface. Along with the information a user can enable or disable his Internet connection from this page.

Option1 Status (IPv4)

MAC Address:	B8:A3:86:7B:AC:87
IPv4 Address:	0.0.0.0 / 255.255.255.0
Option State:	DOWN
NAT (IPv4 only):	Disabled
IPv4 Connection Type:	Dynamic IP (DHCP)
IPv4 Connection State:	Not Yet Connected
Link State:	LINK DOWN
Option Mode:	Use only single Option port: Option1
Gateway:	0.0.0.0
Primary DNS:	0.0.0.0
Secondary DNS:	0.0.0.0

Helpful Hints...

The Status page will give you an overview of the primary and secondary internet connections from the router. Active Option links will have the Option State as UP, and will show a Disable button. If the Option IP addresses are provided by a DHCP ISP, the DHCP lease can be released or renewed to refresh the connection. Configured but inactive connections will have Option State as down and can be brought up with the Enable button.

[More...](#)

WIRELESS CONTROLLER



DWC-1000 //	SETUP	ADVANCED	TOOLS	STATUS	HELP
--------------------	--------------	-----------------	--------------	---------------	-------------

- Wizard
- WLAN Global Settings
- AP Management
- WLAN Visualization
- Option Port Settings
- Network Settings
- LAN QoS
- VLAN Settings
- USB Settings

OPTION SETUP LOGOUT

This page allows you to set up your Internet connection. Ensure that you have the Internet connection information such as the IP Addresses, Account Information etc. This information is usually provided by your ISP or network administrator.

Connection Type

Connection Type:

Host Name:

Domain Name System (DNS) Servers

DNS Server Source:
Primary DNS Server:
Secondary DNS Server:

MAC Address

MAC Address Source:
MAC Address:

Helpful Hints...

The setup page lets you configure the ISP settings to enable this router to connect to the Internet. This router supports multiple connections. Please select the appropriate connection to connect to the Internet.

[More...](#)

D-Link : Wireless Controller x

192.168.0.10/platform.cgi?page=lanSetup.htm

Product Page: DWC-1000 Hardware Version: A1 Firmware Version: 1.01B67_WW

D-Link®

DWC-1000	SETUP	ADVANCED	TOOLS	STATUS	HELP
----------	-------	----------	-------	--------	------

- Wizard ▶
- WLAN Global Settings ▶
- AP Management ▶
- WLAN Visualization ▶
- Option Port Settings ▶
- Network Settings ▶
 - LAN Setup Configuration
 - LAN QoS ▶
 - VLAN Settings ▶
 - USB Settings ▶

LAN SETUP LOGOUT

The LAN Configuration page allows you to configure the LAN interface of the router including the DHCP Server which runs on it.

LAN DHCP Reserved IPs	192.168.0.10
LAN DHCP Leased Clients	255.255.255.0

DHCP Mode: DHCP Server ▼

Starting IP Address:

Ending IP Address:

Default Gateway (Optional):

Primary DNS Server:

Secondary DNS Server:

Domain Name:

WINS Server:

Lease Time:

Relay Gateway:

Helpful Hints...

Changes here affect all devices connected to the router's LAN switch and also wireless LAN clients. Note that a change to the LAN IP address will require all LAN hosts to be in the same subnet and use the new address to access this GUI.

[More...](#)

DNS Host Name Mapping

#	Host Name	IP Address
1	<input style="width: 100%;" type="text"/>	<input style="width: 100%;" type="text"/>
2	<input style="width: 100%;" type="text"/>	<input style="width: 100%;" type="text"/>

D-Link : Wireless Controller x

192.168.0.10/platform.cgi?page=lanSetup.htm

LAN QoS

VLAN Settings

USB Settings

IP Address: 192.168.0.10

Subnet Mask: 255.255.255.0

DHCP

DHCP Mode: DHCP Server

Starting IP Address: 192.168.0.11

Ending IP Address: 192.168.0.15

Default Gateway (Optional): 192.168.0.253

Primary DNS Server: 61.88.88.88

Secondary DNS Server: 4.2.2.2

Domain Name: DLink

WINS Server:

Lease Time: 24

Relay Gateway:

DNS Host Name Mapping

#	Host Name	IP Address
1		
2		
3		
4		
5		
6		
7		
8		

LAN Proxy

Enable DNS Proxy:

D-Link : Wireless Controller x

192.168.0.10/platform.cgi?page=dhcpReservedIps.htm

Product Page: DWC-1000 Hardware Version: A1 Firmware Version: 1.01B67_WW

D-Link®

DWC-1000 //	SETUP	ADVANCED	TOOLS	STATUS	HELP
--------------------	--------------	-----------------	--------------	---------------	-------------

- Wizard ▶
- WLAN Global Settings ▶
- AP Management ▶
- WLAN Visualization ▶
- Option Port Settings ▶
- Network Settings ▾
- LAN QoS ▶
- VLAN Settings ▶
- USB Settings ▶

DHCP RESERVED IPS (LAN) LOGOUT

This page allows user to configure the reserved IP Addresses for the DHCP Server configuration.

IP Address	MAC Address
<input type="checkbox"/>	

Helpful Hints...

In order to ensure certain LAN devices always receive the same IP address when DHCP is enabled on the LAN, bind the LAN device's MAC address to a preferred IP address. This IP address will only be assigned to the matching MAC address.

[More...](#)

WIRELESS CONTROLLER

Copyright © 2011 D-Link Corporation.

D-Link : Wireless Controller x

192.168.0.10/platform.cgi?page=dhcpLeasedClients.htm

Product Page: DWC-1000 Hardware Version: A1 Firmware Version: 1.01B67_WW

D-Link®

DWC-1000 //	SETUP	ADVANCED	TOOLS	STATUS	HELP
--------------------	--------------	-----------------	--------------	---------------	-------------

- Wizard ▶
- WLAN Global Settings ▶
- AP Management ▶
- WLAN Visualization ▶
- Option Port Settings ▶
- Network Settings ▾
- LAN QoS ▶
- VLAN Settings ▶
- USB Settings ▶

DHCP LEASED CLIENTS LOGOUT

This table displays the list of DHCP clients connected to the LAN DHCP Server and to whom DHCP Server has given leases.

DHCP Leased Clients (LAN)

IP Address	MAC Address
192.168.0.11	fc:75:16:76:11:40

Helpful Hints...

If the LAN is serving DHCP addresses, this table will show the list of DHCP clients for the router's LAN DHCP server.

[More...](#)

WIRELESS CONTROLLER

D-Link : Wireless Controller x

192.168.0.10/platform.cgi?page=portQueueSchedule.htm

Product Page: DWC-1000 Hardware Version: A1 Firmware Version: 1.01B67_WW

D-Link®

DWC-1000	SETUP	ADVANCED	TOOLS	STATUS	HELP
Wizard	PORT QUEUE SCHEDULING LOGOUT				Helpful Hints... The device will be programmed to handle the traffic using the algorithm configured here. More...
WLAN Global Settings	The scheduling algorithm for the LAN switch can be configured here. The supported algorithms are strict and weighted round robin only. <input type="button" value="Save Settings"/> <input type="button" value="Don't Save Settings"/>				
AP Management	Port Queue Scheduling				
WLAN Visualization	Algorithm: <input type="text" value="Strict"/> <ul style="list-style-type: none"> Strict Weighted Round Robin 				
Option Port Settings	Port Queue Scheduling Port Queue Status				
Network Settings	LAN QoS Configuration 801.p Configuration DSCP Configuration Remark CoS To DSCP				
LAN QoS					
VLAN Settings					
USB Settings					
WIRELESS CONTROLLER					

192.168.0.10/platform.cgi?page=portQueueSchedule.htm

D-Link : Wireless Controller x

192.168.0.10/platform.cgi?page=portQueueStatus.htm

Product Page: DWC-1000 Hardware Version: A1 Firmware Version: 1.01B67_WW

D-Link®

DWC-1000	SETUP	ADVANCED	TOOLS	STATUS	HELP
Wizard	PORT QUEUE STATUS LOGOUT				Helpful Hints... We currently do not support configuration of queue management algorithm. More...
WLAN Global Settings	This page shows the current queue management algorithm that is used in the LAN switch.				
AP Management	Port Queue Status				
WLAN Visualization	Queue Management Algorithm: Tail Drop				
Option Port Settings					
Network Settings					
LAN QoS					
VLAN Settings					
USB Settings					
WIRELESS CONTROLLER					

D-Link : Wireless Controller x
 192.168.0.10/platform.cgi?page=lanQos.htm
 Product Page: DWC-1000 Hardware Version: A1 Firmware Version: 1.01B67_WW

D-Link

DWC-1000 // SETUP ADVANCED TOOLS STATUS HELP

Wizard
 WLAN Global Settings
 AP Management
 WLAN Visualization
 Option Port Settings
 Network Settings
 LAN QoS
 VLAN Settings
 USB Settings

Please enable QoS for LAN ports to set Trust Mode to LAN ports

LAN QoS

LOGOUT

Enabling QoS on LAN is an advanced configuration, which is required only if you expect congestion on the traffic on the LAN ports.

Save Settings Don't Save Settings

LAN QoS

Enable QoS for LAN ports?:

LAN QoS Configuration

LAN Port	Classify Using
1	CoS
2	CoS
3	CoS
4	CoS
5	CoS

Helpful Hints...
 This page allows you to enable the configuration and configure each ports to trust a CoS or DSCP values in the packet.
 More...

WIRELESS CONTROLLER

D-Link : Wireless Controller x
 192.168.0.10/platform.cgi?page=portCosMapping.htm
 Product Page: DWC-1000 Hardware Version: A1 Firmware Version: 1.01B67_WW

D-Link

DWC-1000 // SETUP ADVANCED TOOLS STATUS HELP

Wizard
 WLAN Global Settings
 AP Management
 WLAN Visualization
 Option Port Settings
 Network Settings
 LAN QoS
 VLAN Settings
 USB Settings

PORT COS MAPPING

LOGOUT

Port CoS Mapping enables you to change the priority of the PCP value.

Save Settings Don't Save Settings

CoS to Port Priority Queue Mapping

CoS Value	Priority Queue
0	Low
1	Low
2	Low
3	Low
4	Low
5	Low
6	Low
7	Low

Helpful Hints...
 Port CoS Mapping enables you to assign the priority to the traffic for the CoS value.
 More...

WIRELESS CONTROLLER



- DWC-1000
- Wizard
- WLAN Global Settings
- AP Management
- WLAN Visualization
- Option Port Settings
- Network Settings
- LAN QoS
- VLAN Settings
- USB Settings

SETUP ADVANCED TOOLS STATUS HELP

PORT DSCP MAPPING

This page defines the map between the DSCP value in the packet and the associated priority it gets while traveling through the LAN switch.

[LOGOUT](#)

Helpful Hints...
There are four priority values (Lowest, Low, Medium, Highest) that can be chosen from.
[More...](#)

DSCP to Port Priority Queue Mapping

DSCP	Queue	DSCP	Queue	DSCP	Queue	DSCP	Queue
0	Low	1	Low	2	Low	3	Low
4	Low	5	Low	6	Low	7	Low
8	Low	9	Low	10	Low	11	Low
12	Low	13	Low	14	Low	15	Low
16	Low	17	Low	18	Low	19	Low
20	Low	21	Low	22	Low	23	Low
24	Low	25	Low	26	Low	27	Low
28	Low	29	Low	30	Low	31	Low
32	Low	33	Low	34	Low	35	Low
36	Low	37	Low	38	Low	39	Low
40	Low	41	Low	42	Low	43	Low
44	Low	45	Low	46	Low	47	Low
48	Low	49	Low	50	Low	51	Low
52	Low	53	Low	54	Low	55	Low
56	Low	57	Low	58	Low	59	Low
60	Low	61	Low	62	Low	63	Low



DWC-1000 // **SETUP** **ADVANCED** **TOOLS** **STATUS** **HELP**

- Wizard
- WLAN Global Settings
- AP Management
- WLAN Visualization
- Option Port Settings
- Network Settings
- LAN QoS
- VLAN Settings
- USB Settings

Please enable CoS to DSCP Marking to map CoS to DSCP Remark

PORT COS MAPPING **LOGOUT**

Remarking CoS to DSCP is an advanced QoS configuration, where the Layer 2 quality of service field is translated to a Layer 3 QoS field in the packet, so that upstream routers can make a QoS decision based on the DSCP field set in the packet.

Remark CoS to DSCP

Do you want to enable CoS to DSCP Marking?

Remark CoS to DSCP

CoS	DSCP
0	0
1	8
2	16
3	24
4	32
5	40
6	48
7	56

Helpful Hints...
Once you enable CoS to DSCP marking by choosing the check box, you can choose the appropriate value of the DSCP for a given CoS value.
[More...](#)

D-Link : Wireless Controller x

192.168.0.10/platform.cgi?page=vlan.htm

Product Page: DWC-1000 Hardware Version: A1 Firmware Version: 1.01B67_WW

D-Link®

DWC-1000 //	SETUP	ADVANCED	TOOLS	STATUS	HELP
--------------------	--------------	-----------------	--------------	---------------	-------------

Wizard

WLAN Global Settings

AP Management

WLAN Visualization

Option Port Settings

Network Settings

LAN QoS

VLAN Settings

USB Settings

VLAN CONFIGURATION LOGOUT

This page allows user to enable/disable VLAN functionality on the router.

Save Settings Don't Save Settings

VLAN CONFIGURATION

Enable VLAN

VLAN Configuration

Port VLAN

Multiple VLAN Subnets

Available VLANs

Helpful Hints...
The router supports virtual network isolation on the LAN with the use of VLANs. LAN devices can be configured to communicate in a subnetwork defined by VLAN identifiers.
More...

WIRELESS CONTROLLER

192.168.0.10/platform.cgi?page=vlan.htm Copyright © 2011 D-Link Corporation.

D-Link : Wireless Controller x

192.168.0.10/platform.cgi

Product Page: DWC-1000 Hardware Version: A1 Firmware Version: 1.01B67_WW

D-Link®

DWC-1000 //	SETUP	ADVANCED	TOOLS	STATUS	HELP
--------------------	--------------	-----------------	--------------	---------------	-------------

Wizard

WLAN Global Settings

AP Management

WLAN Visualization

Option Port Settings

Network Settings

LAN QoS

VLAN Settings

USB Settings

PORT VLANS LOGOUT

Operation succeeded

This page allows user to configure the port VLANs. A user can choose ports and can add them into a VLAN.

Port VLANs

	Port Name	Mode	PVID	VLAN Membership
<input type="checkbox"/>	Port 1	Access	1	1
<input type="checkbox"/>	Port 2	Access	1	1
<input type="checkbox"/>	Port 3	Access	1	1
<input checked="" type="checkbox"/>	Port 4	General	1	1, 2

Edit

Helpful Hints...
In order to tag all traffic through a specific LAN port with a VLAN ID, you can associate a VLAN to a physical port. The VLAN Port table displays the port identifier, the mode setting for that port and VLAN membership information. Go to the Available VLAN page to configure a VLAN membership that can then be associated with a port.
More...

WIRELESS CONTROLLER

192.168.0.10/platform.cgi?page=vlan.htm Copyright © 2011 D-Link Corporation.

D-Link : Wireless Controller x
192.168.0.10/platform.cgi

Product Page: DWC-1000 Hardware Version: A1 Firmware Version: 1.01B67_WW

D-Link®

DWC-1000	SETUP	ADVANCED	TOOLS	STATUS	HELP
----------	-------	----------	-------	--------	------

Wizard

WLAN Global Settings

AP Management

WLAN Visualization

Option Port Settings

Network Settings

LAN QoS

VLAN Settings

USB Settings

VLAN CONFIGURATION

LOGOUT

This page allows user to configure the port VLAN.

VLAN Configuration

Port Name: Port 4

Mode:

PVID:

Apply Cancel

VLAN Membership Configuration

VLAN Membership: 1 2

Apply Cancel

Helpful Hints...
The VLAN mode is an important setting to determine how VLAN traffic is passed through the router. In Access mode the port is a member of a single VLAN (and only one). In Trunk mode all data going into and out of the port is tagged, and untagged coming into the port is not forwarded, except for the default VLAN with PVID=1, which is untagged. In General mode, the port sends and receives data that is tagged or untagged with a VLAN ID.
More...

WIRELESS CONTROLLER

Copyright © 2011 D-Link Corporation.

D-Link : Wireless Controller x
192.168.0.10/platform.cgi?page=multiVlanSnet.htm

Product Page: DWC-1000 Hardware Version: A1 Firmware Version: 1.01B67_WW

D-Link®

DWC-1000	SETUP	ADVANCED	TOOLS	STATUS	HELP
----------	-------	----------	-------	--------	------

Wizard

WLAN Global Settings

AP Management

WLAN Visualization

Option Port Settings

Network Settings

LAN QoS

VLAN Settings

USB Settings

MULTI VLAN SUBNETS

LOGOUT

This page shows a list of available multi-vlan subnets. User can even edit the multi-vlans from this page.

MULTI VLAN SUBNET List

	Vlan ID	IP Address	Subnet Mask
<input type="checkbox"/>	1	192.168.0.10	255.255.255.0
<input type="checkbox"/>	2	192.168.2.1	255.255.255.0

Edit

Helpful Hints...
Each VLAN can be assigned a unique IP address and subnet mask for the virtually isolated network. Unless inter-VLAN routing is enabled, the VLAN subnet will determine the network addresses on the LAN that can communicate to devices that correspond to this VLAN.
More...

WIRELESS CONTROLLER

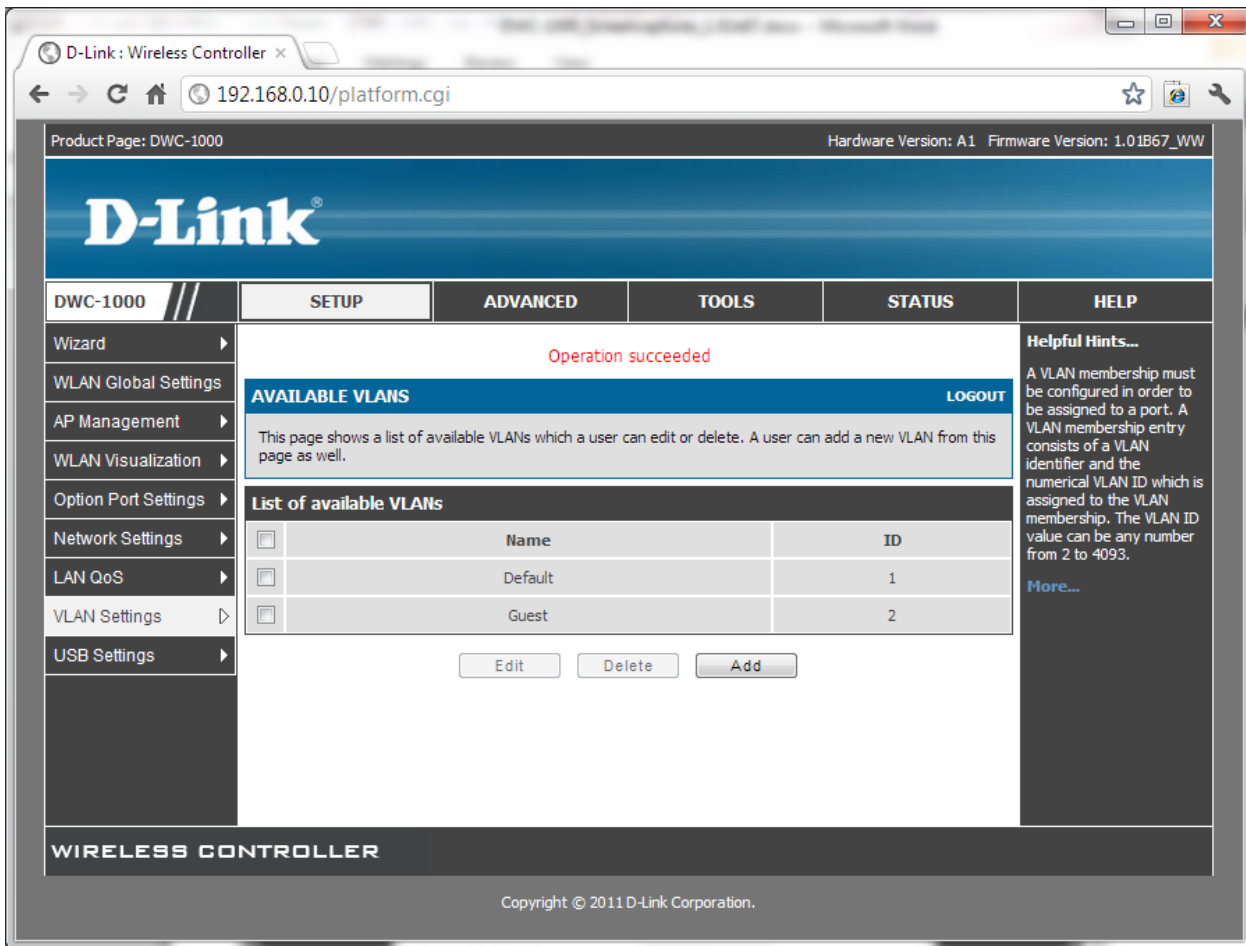
Copyright © 2011 D-Link Corporation.

D-Link : Wireless Controller x
 192.168.0.10/platform.cgi
 Product Page: DWC-1000 Hardware Version: A1 Firmware Version: 1.01B67_WW

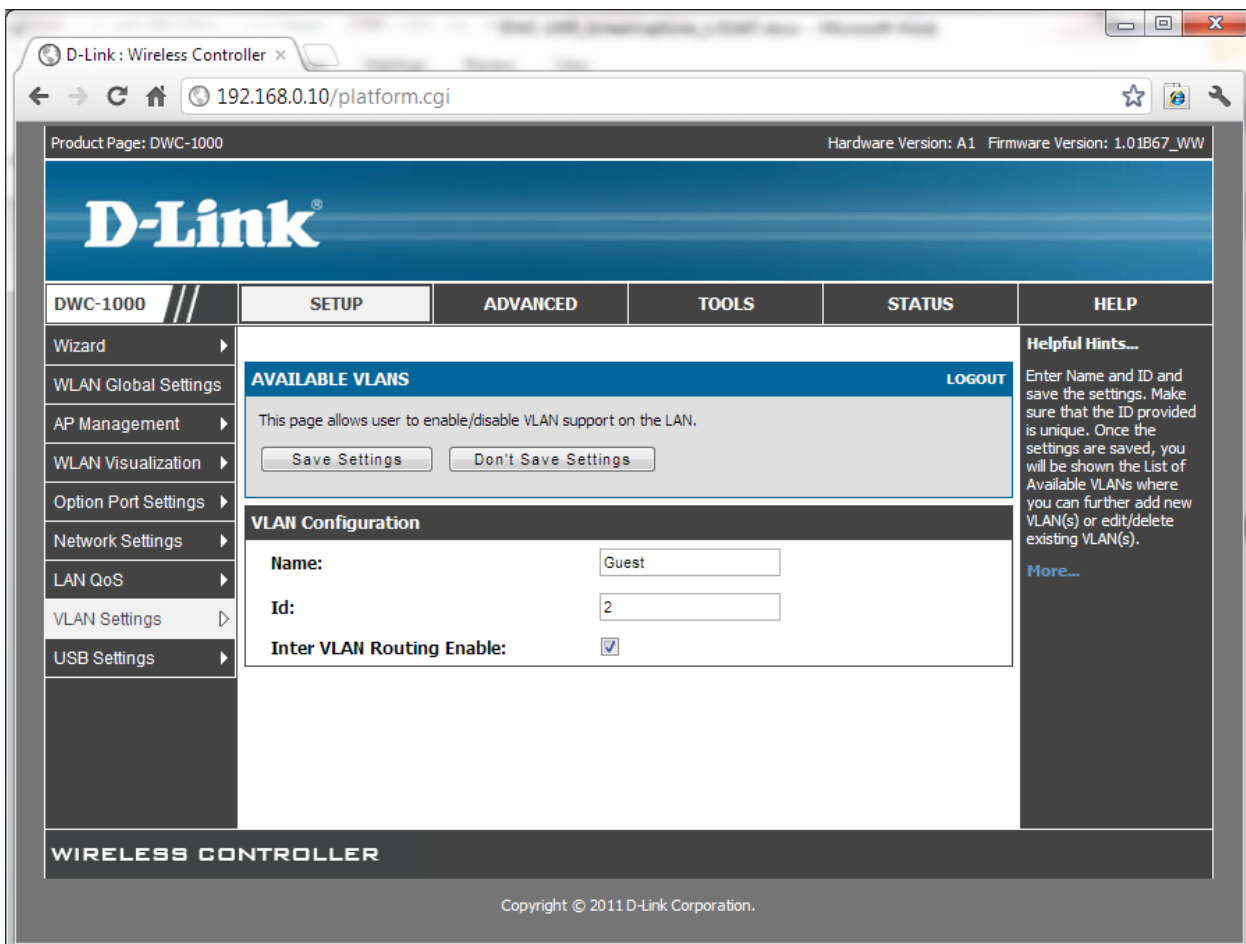
D-Link®

DWC-1000	SETUP	ADVANCED	TOOLS	STATUS	HELP
Wizard	MULTI VLAN SUBNET CONFIG LOGOUT				Helpful Hints... By default, when you add a new VLAN, it is assigned an IP address of 192.168.2.1 with subnet-mask 255.255.255.0, the next added one is assigned 192.168.3.1 and so on. You can change the assigned IP address, subnet mask and many other options here. The only non-editable field in VLAN ID. More...
WLAN Global Settings	This page shows the list of available multiple VLAN subnets. <input type="button" value="Save Settings"/> <input type="button" value="Don't Save Settings"/>				
AP Management	MULTI VLAN SUBNET				
WLAN Visualization	Vlan ID: 1 IP Address: <input type="text" value="192.168.0.10"/> Subnet Mask: <input type="text" value="255.255.255.0"/>				
Option Port Settings	DHCP				
Network Settings	DHCP Mode: <input type="text" value="DHCP Server"/>				
LAN QoS	Domain Name: <input type="text" value="DLink"/>				
VLAN Settings	Starting IP Address: <input type="text" value="192.168.0.11"/> Ending IP Address: <input type="text" value="192.168.0.15"/> Default Gateway (Optional): <input type="text" value="192.168.0.253"/> Primary DNS Server (Optional): <input type="text" value="61.88.88.88"/> Secondary DNS Server (Optional): <input type="text" value="4.2.2.2"/> Lease Time: <input type="text" value="24"/> (Hours) Relay Gateway: <input type="text"/>				
USB Settings	LAN Proxy				
	Enable DNS Proxy: <input checked="" type="checkbox"/>				

WIRELESS CONTROLLER





Add:



D-Link : Wireless Controller x
192.168.0.10/platform.cgi?page=usbSettings.htm

Product Page: DWC-1000 Hardware Version: A1 Firmware Version: 1.01B67_WW

D-Link®

DWC-1000	SETUP	ADVANCED	TOOLS	STATUS	HELP								
Wizard	USB SETTINGS LOGOUT				Helpful Hints... Do you know that this page will update dynamically to show the status of the USB devices connected to the router. It is also recommended to use the 'Safely Remove' button to safely remove the hardware before pulling it out of the router. More...								
WLAN Global Settings	This page displays information about the USB devices connected to the USB port(s). This page also allows user to do certain configurations on USB devices, such as safely unmounting the devices.												
AP Management	USB-1: Device Not Connected												
WLAN Visualization	 <table border="1"> <tr><td>Device Vendor:</td><td>NA</td></tr> <tr><td>Device Model:</td><td>NA</td></tr> <tr><td>Device Type:</td><td>NA</td></tr> <tr><td>Mount Status:</td><td>NA</td></tr> </table>					Device Vendor:	NA	Device Model:	NA	Device Type:	NA	Mount Status:	NA
Device Vendor:	NA												
Device Model:	NA												
Device Type:	NA												
Mount Status:	NA												
Option Port Settings	USB Status												
Network Settings	USB SharePort												
LAN QoS	USB-2: Device Not Connected												
VLAN Settings	 <table border="1"> <tr><td>Device Vendor:</td><td>NA</td></tr> <tr><td>Device Model:</td><td>NA</td></tr> <tr><td>Device Type:</td><td>NA</td></tr> <tr><td>Mount Status:</td><td>NA</td></tr> </table>				Device Vendor:	NA	Device Model:	NA	Device Type:	NA	Mount Status:	NA	
Device Vendor:	NA												
Device Model:	NA												
Device Type:	NA												
Mount Status:	NA												
USB Settings													

192.168.0.10/platform.cgi?page=usbSettings.htm

D-Link : Wireless Controller x
192.168.0.10/platform.cgi?page=usbSharePort1.htm

Product Page: DWC-1000 Hardware Version: A1 Firmware Version: 1.01B67_WW

D-Link®

DWC-1000	SETUP	ADVANCED	TOOLS	STATUS	HELP						
Wizard	USB SHARE PORT LOGOUT				Helpful Hints... The USB storage devices and USB printers connected to this router can be shared across the network and can be accessed from any host connected to the network. More...						
WLAN Global Settings	This page allows the user to configure the SharePort feature available in the router. <input type="button" value="Save Settings"/> <input type="button" value="Don't Save Settings"/>										
AP Management	USB-1 (NA)										
WLAN Visualization	Enable USB Printer: <input type="checkbox"/>										
Option Port Settings	USB-2 (NA)										
Network Settings	Enable USB Printer: <input type="checkbox"/>										
LAN QoS	Sharing Enabled interfaces										
VLAN Settings	<table border="1"> <thead> <tr> <th>VLAN Name</th> <th>Enable Printer</th> </tr> </thead> <tbody> <tr> <td>default</td> <td><input type="checkbox"/></td> </tr> <tr> <td>Guest</td> <td><input type="checkbox"/></td> </tr> </tbody> </table>					VLAN Name	Enable Printer	default	<input type="checkbox"/>	Guest	<input type="checkbox"/>
VLAN Name	Enable Printer										
default	<input type="checkbox"/>										
Guest	<input type="checkbox"/>										
USB Settings											

WIRELESS CONTROLLER

Copyright © 2011 D-Link Corporation.

D-Link : Wireless Controller x

192.168.0.10/AdvancedGlobalConfig.html

Product Page: DWC-1000 Hardware Version: A1 Firmware Version: 1.01B67_WW

D-Link®

DWC-1000	SETUP	ADVANCED	TOOLS	STATUS	HELP
Global	General				Helpful Hints... Wireless Configurations are set on this page. We can Configure Wireless by setting the fields shown on this page like Peer Group ID, Client Roam Timeout ... More...
Peer Controllers	SNMP Trap	MS		LOGOUT	
AP Profile	Distributed Tunneling				
SSIDs	Submit Don't Save Settings				
WIDS Security	Wireless Configuration				
Captive Portal					
Client					
IPv6					
Routing					
Certificates					
Users					
IP/MAC Binding					
Radius Settings					
WLAN Radius					
Switch Settings					

WIRELESS CONFIGURATION

Peer Group ID: 1 (1 to 255)

Client Roam Timeout: 30 (1 to 120 Seconds)

Ad Hoc Client Status Timeout: 24 (0 to 168 Hours)

AP Failure Status Timeout: 24 (0 to 168 Hours)

MAC Authentication Mode: white-list

RF Scan Status Timeout: 24 (0 to 168 Hours)

Detected Clients Status Timeout: 24 (0 to 168 Hours)

Tunnel IP MTU Size: 1500

Cluster Priority: 1 (0 to 255, 0 - Disable)

AP Client QoS: Disable

192.168.0.10/AdvancedGlobalConfig.html#

D-Link : Wireless Controller x
192.168.0.10/AdvancedGlobalConfig.html

Product Page: DWC-1000 Hardware Version: A1 Firmware Version: 1.01B67_WW

D-Link®

DWC-1000 // SETUP ADVANCED TOOLS STATUS HELP

Global Peer Controllers AP Profile SSIDs WIDS Security Captive Portal Client IPv6 Routing Certificates Users IP/MAC Binding Radius Settings WLAN Radius Switch Settings

CONFIGURATION ITEMS LOGOUT

The fields on this page are settings that apply to the Unified Wireless controller.

Wireless Configuration

Peer Group ID	<input type="text" value="1"/>	(1 to 255)
Client Roam Timeout	<input type="text" value="30"/>	(1 to 120 Seconds)
Ad Hoc Client Status Timeout	<input type="text" value="24"/>	(0 to 168 Hours)
AP Failure Status Timeout	<input type="text" value="24"/>	(0 to 168 Hours)
MAC Authentication Mode	<input type="text" value="white-list"/>	
RF Scan Status Timeout	<input type="text" value="24"/>	(0 to 168 Hours)
Detected Clients Status Timeout	<input type="text" value="24"/>	(0 to 168 Hours)
Tunnel IP MTU Size	<input type="text" value="1500"/>	
Cluster Priority	<input type="text" value="1520"/>	(0 to 255, 0 - Disable)
AP Client QoS	<input type="text" value="Disable"/>	

Helpful Hints...
Wireless Configurations are set on this page. We can Configure Wireless by setting the fields shown on this page like Peer Group ID, Client Roam Timeout ...
[More...](#)

WIRELESS CONTROLLER

D-Link : Wireless Controller x
192.168.0.10/WirelessSNMPTrapsConfig.html

Product Page: DWC-1000 Hardware Version: A1 Firmware Version: 1.01B67_WW

D-Link®

DWC-1000	SETUP	ADVANCED	TOOLS	STATUS	HELP
Global	SNMP TRAPS LOGOUT				Helpful Hints... When an AP is managed by a controller, it does not send out any traps. The Controller generates all SNMP traps based on its own events and the events it learns about through updates from the APs it manages. More...
Peer Controllers	If you use Simple Network Management Protocol (SNMP) to manage the Unified Wireless Controller, you can configure the SNMP agent on the Controller to send traps to the SNMP manager on your network				
AP Profile	<input type="button" value="Submit"/> <input type="button" value="Don't Save Settings"/>				
SSIDs	Wireless SNMP Trap Configuration				
WIDS Security	AP Failure Traps	<input type="button" value="Disable"/> ▾			
Captive Portal	AP State Change Traps	<input type="button" value="Disable"/> ▾			
Client	Client Failure Traps	<input type="button" value="Disable"/> ▾			
IPv6	Client State Change Traps	<input type="button" value="Disable"/> ▾			
Routing	Peer Switch Traps	<input type="button" value="Disable"/> ▾			
Certificates	RF Scan Traps	<input type="button" value="Disable"/> ▾			
Users	Rogue AP Traps	<input type="button" value="Disable"/> ▾			
IP/MAC Binding	WIDS Status Traps	<input type="button" value="Disable"/> ▾			
Radius Settings	Wireless Status Traps	<input type="button" value="Disable"/> ▾			
WLAN Radius					
Switch Settings					

Product Page: DWC-1000 Hardware Version: A1 Firmware Version: 1.01B67_VW

D-Link

DWC-1000 // SETUP ADVANCED TOOLS STATUS HELP

- Global
- Peer Controllers
- AP Profile
- SSIDs
- WIDS Security
- Captive Portal
- Client
- IPv6
- Routing
- Certificates
- Users
- IP/MAC Binding
- Radius Settings
- WLAN Radius
- Switch Settings

DISTRIBUTED TUNNELING LOGOUT

The Distributed Tunneling mode, also known as AP-AP tunneling mode, is used to support L3 roaming for wireless clients without forwarding any data traffic to the wireless controller.

Distributed Tunneling Configuration

Distributed Tunnel Clients	<input type="text" value="128"/>	(1 to 8000)
Distributed Tunnel Idle Timeout	<input type="text" value="120"/>	(30 to 3600)
Distributed Tunnel Timeout	<input type="text" value="7200"/>	(30 to 86400)
Distributed Tunnel Max Multicast Replications Allowed	<input type="text" value="128"/>	(1 to 1024)

Helpful Hints...

In the AP-AP tunneling mode, when a client first associates with an AP in the wireless system the AP forwards its data using the VLAN forwarding mode. The AP to which the client initially associates is the Home AP. The AP to which the client roams is the Association AP.

[More...](#)

WIRELESS CONTROLLER

Copyright © 2011 D-Link Corporation.

D-Link : Wireless Controller x
 192.168.0.10/cp_send_status.html

Product Page: DWC-1000 Hardware Version: A1 Firmware Version: 1.01B67_VW

D-Link®

DWC-1000	SETUP	ADVANCED	TOOLS	STATUS	HELP
Global					Helpful Hints... The Peer Controller Configuration feature allows you to send a variety of configuration information from one controller to all other controllers. In addition to keeping the controllers synchronized, this function allows you to manage all wireless controllers in the cluster from one controller. More...
Peer Controllers	Configuration Request Status	REQUEST		LOGOUT	
AP Profile	Configuration Items	Configuration Request Status page provides information about the status of the controllers in the cluster.			
SSIDs					
WIDS Security	Peer Controller Configuration Request Status				
Captive Portal	Configuration Request Status:		Not Started		
Client	Total Count:		0		
IPv6	Success Count:		0		
Routing	Failure Count:		0		
Certificates	List of Peers				
Users	No data available for peer switch status.				
IP/MAC Binding	<input type="button" value="Refresh"/>				
Radius Settings					
WLAN Radius					
Switch Settings					

WIRELESS CONTROLLER

Copyright © 2011 D-Link Corporation.

192.168.0.10/cp_send_status.html

D-Link : Wireless Controller x
192.168.0.10/cp_send_status.html

Product Page: DWC-1000 Hardware Version: A1 Firmware Version: 1.01B67_WW

D-Link

DWC-1000	SETUP	ADVANCED	TOOLS	STATUS	HELP
Global	CONFIGURATION REQUEST LOGOUT				Helpful Hints... The Peer Controller Configuration feature allows you to send a variety of configuration information from one controller to all other controllers. In addition to keeping the controllers synchronized, this function allows you to manage all wireless controllers in the cluster from one controller. More...
Peer Controllers	The Peer Controller Configuration Request Status page provides information about the status of the configuration upgrade on the controllers in the cluster.				
AP Profile	Peer Controller Configuration Request Status				
SSIDs	Configuration Request Status: Not Started Total Count: 0 Success Count: 0 Failure Count: 0				
WIDS Security	List of Peers				
Captive Portal	No data available for peer switch status.				
Client	<input type="button" value="Refresh"/>				
IPv6					
Routing					
Certificates					
Users					
IP/MAC Binding					
Radius Settings					
WLAN Radius					
Switch Settings					

WIRELESS CONTROLLER

D-Link : Wireless Controller x
192.168.0.10/PeerSwitchConfigEnableDisable.html

Product Page: DWC-1000 Hardware Version: A1 Firmware Version: 1.01B67_WW

D-Link

DWC-1000	SETUP	ADVANCED	TOOLS	STATUS	HELP
Global	CONFIGURATION ITEMS LOGOUT				Helpful Hints... You can make changes to a configuration that has been sent to one or more peer controllers, and you can make changes to a configuration received from a peer controller. No changes automatically propagate from one controller to the cluster; you must manually initiate a request on one controller in order to copy any configuration to its peers. More...
Peer Controllers	The Peer Controller Configuration page allows you to select which parts of the configuration to copy to one or more peer controllers in the group. <input type="button" value="Submit"/> <input type="button" value="Don't Save Settings"/>				
AP Profile	Peer Controller Configuration				
SSIDs	Global <input type="button" value="Enable"/>				
WIDS Security	Discovery <input type="button" value="Disable"/>				
Captive Portal	Channel/Power <input type="button" value="Enable"/>				
Client	AP Database <input type="button" value="Enable"/>				
IPv6	AP Profiles <input type="button" value="Enable"/>				
Routing	Known Client <input type="button" value="Enable"/>				
Certificates	Captive Portal <input type="button" value="Disable"/>				
Users	RADIUS Client <input type="button" value="Enable"/>				
IP/MAC Binding					
Radius Settings					
WLAN Radius					
Switch Settings					

Product Page: DWC-1000 Hardware Version: A1 Firmware Version: 1.01B67_WW

D-Link

DWC-1000 // SETUP ADVANCED TOOLS STATUS HELP

Global ▶ Peer Controllers ▶ AP Profile SSIDs WIDS Security ▶ Captive Portal ▶ Client IPv6 ▶ Routing Certificates Users ▶ IP/MAC Binding Radius Settings WLAN Radius ▶ Switch Settings

AP PROFILES SUMMARY LOGOUT

From Access Point Profile Summary page, you can create, copy, or delete AP profiles. You can create up to 16 AP profiles on the Unified Wireless Controller.

Access Point Profile List

<input type="checkbox"/>	Profile	Profile Status
<input type="checkbox"/>	1-Default	Associated - Modified
<input type="checkbox"/>	2-My_Office	Configured

Helpful Hints...
 You can create multiple AP profiles on the Unified Wireless Controller to customize APs based on location, function, or other criteria. Profiles are like templates, and once you create an AP profile, you can apply that profile to any AP that the Unified Wireless Controller manages.
[More...](#)

WIRELESS CONTROLLER

Copyright © 2011 D-Link Corporation.

Add:



Configure Radio:

D-Link : Wireless Controller x

192.168.0.10/profile_radio_cfg_rw.html?advanced=1&profile=2

Product Page: DWC-1000 Hardware Version: A1 Firmware Version: 1.01B67_WW

D-Link®

DWC-1000	SETUP	ADVANCED	TOOLS	STATUS	HELP
Global					Helpful Hints... AP can support up to two radios. By default, Radio 1 operates in the IEEE 802.11b/g/n mode, and Radio 2 operates in the IEEE 802.11a/n mode. The difference between these modes is the frequency in which they operate. IEEE 802.11b/g/n operates in the 2.4 GHz frequency, and IEEE 802.11a/n operates in the 5 GHz frequency of the radio spectrum. More...
Peer Controllers	AP PROFILES SUMMARY LOGOUT				
AP Profile	This page contains several fields that are not available for the default AP Profile. <input type="button" value="Submit"/> <input type="button" value="Don't Save Settings"/>				
SSIDs					
WIDS Security					
Captive Portal	AP Profile Radio Configuration				
Client	AP Profile: AP Profile 2-My_Office Radio Mode: <input checked="" type="radio"/> 1-802.11a/n <input type="radio"/> 2-802.11b/g/n				
IPv6					
Routing					
Certificates	Radio Configuration				
Users	State: <input checked="" type="radio"/> On <input type="radio"/> Off				
IP/MAC Binding	RTS Threshold: <input type="text" value="2347"/> (0 to 2347) (Bytes)				
Radius Settings	Load Balancing: <input type="checkbox"/>				
WLAN Radius	Load Utilization: <input type="text" value="60"/> (1 to 100) (%)				
Switch Settings	Maximum Clients: <input type="text" value="200"/> (0 to 200) (Seconds)				
	RF Scan Other Channels: <input checked="" type="checkbox"/>				
	RF Scan Sentry: <input type="checkbox"/>				
	Mode: IEEE 802.11a/n				
	DTIM Period: <input type="text" value="10"/> (1 to 255) (# Beacons)				
	Beacon Interval: <input type="text" value="100"/> (20 to 2000) (Msecs)				
	Automatic Channel: <input checked="" type="checkbox"/>				
	Automatic Power: <input checked="" type="checkbox"/>				
	Initial Power: <input type="text" value="100"/> (1 to 100) (%)				
	APSD Mode <input type="text" value="Enable"/>				

D-Link : Wireless Controller x 192.168.0.10/profile_radio_cfg_rw.html

Product Page: DWC-1000 Hardware Version: A1 Firmware Version: 1.01B67_WW

D-Link®

DWC-1000	SETUP	ADVANCED	TOOLS	STATUS	HELP
Global					Helpful Hints... AP can support up to two radios. By default, Radio 1 operates in the IEEE 802.11b/g/n mode, and Radio 2 operates in the IEEE 802.11a/n mode. The difference between these modes is the frequency in which they operate. IEEE 802.11b/g/n operates in the 2.4 GHz frequency, and IEEE 802.11a/n operates in the 5 GHz frequency of the radio spectrum. More...
Peer Controllers	AP PROFILES SUMMARY LOGOUT				
AP Profile	This page contains several fields that are not available for the default AP Profile. <input type="button" value="Submit"/> <input type="button" value="Don't Save Settings"/>				
SSIDs					
WIDS Security					
Captive Portal	AP Profile Radio Configuration				
Client	AP Profile: AP Profile 2-My_Office Radio Mode: <input type="radio"/> 1-802.11a/n <input checked="" type="radio"/> 2-802.11b/g/n				
IPv6					
Routing					
Certificates	Radio Configuration				
Users	State: <input checked="" type="radio"/> On <input type="radio"/> Off RTS Threshold: <input type="text" value="2347"/> (0 to 2347) (Bytes) Load Balancing: <input type="checkbox"/> Load Utilization: <input type="text" value="60"/> (1 to 100) (%) Maximum Clients: <input type="text" value="200"/> (0 to 200) (Seconds) RF Scan Other Channels: <input checked="" type="checkbox"/> RF Scan Sentry: <input type="checkbox"/> Mode: <input type="text" value="IEEE 802.11b/g/n"/> <input type="button" value="v"/> DTIM Period: <input type="text" value="10"/> (1 to 255) (# Beacons) Beacon Interval: <input type="text" value="100"/> (20 to 2000) (Msecs) Automatic Channel: <input checked="" type="checkbox"/> Automatic Power: <input checked="" type="checkbox"/> Initial Power: <input type="text" value="100"/> (1 to 100) (%) APSD Mode <input type="text" value="Enable"/> <input type="button" value="v"/>				

D-Link : Wireless Controller x

192.168.0.10/profile_radio_cfg_rw.html

Automatic Power:

Initial Power: (1 to 100) (%)

APSD Mode

RF Scan Interval (secs) (30 to 120)

Frag Threshold (bytes) (256 to 2346)

RF Scan Sentry Channels 802.11a 802.11b/g

Short Retries

RF Scan Duration (msecs) (10 to 2000)

Long Retries

Rate Limiting

Transmit Lifetime (msecs)

Rate Limit (pkts/sec) (1 to 50)

Receive Lifetime (msecs)

Rate Limit Burst (pkts/sec) (1 to 75)

Station Isolation

Channel Bandwidth

Primary Channel

Protection

Short Guard Interval

Space Time Block Code

Radio Resource Management

No ACK

Multicast Tx Rate (Mbps)

Channels

	1	2	3	4	5	6	7	8	9	10	11	12	13
Supported Channels:	<input checked="" type="checkbox"/>	<input checked="" type="checkbox"/>	<input checked="" type="checkbox"/>	<input checked="" type="checkbox"/>	<input checked="" type="checkbox"/>	<input checked="" type="checkbox"/>	<input checked="" type="checkbox"/>	<input checked="" type="checkbox"/>	<input checked="" type="checkbox"/>	<input checked="" type="checkbox"/>	<input checked="" type="checkbox"/>	<input checked="" type="checkbox"/>	<input checked="" type="checkbox"/>
Auto Eligible:	<input checked="" type="checkbox"/>	<input checked="" type="checkbox"/>	<input checked="" type="checkbox"/>	<input checked="" type="checkbox"/>	<input checked="" type="checkbox"/>	<input checked="" type="checkbox"/>	<input checked="" type="checkbox"/>	<input checked="" type="checkbox"/>	<input checked="" type="checkbox"/>	<input checked="" type="checkbox"/>	<input checked="" type="checkbox"/>	<input checked="" type="checkbox"/>	<input checked="" type="checkbox"/>
Rate Sets (Mbps):	1	2	5.5	6	9	11	12	18	24	36	48	54	
Basic:	<input checked="" type="checkbox"/>	<input checked="" type="checkbox"/>	<input checked="" type="checkbox"/>	<input type="checkbox"/>	<input type="checkbox"/>	<input checked="" type="checkbox"/>	<input type="checkbox"/>	<input type="checkbox"/>	<input type="checkbox"/>	<input type="checkbox"/>	<input type="checkbox"/>	<input type="checkbox"/>	<input type="checkbox"/>
Supported:	<input checked="" type="checkbox"/>	<input checked="" type="checkbox"/>	<input checked="" type="checkbox"/>	<input checked="" type="checkbox"/>	<input checked="" type="checkbox"/>	<input checked="" type="checkbox"/>	<input checked="" type="checkbox"/>	<input checked="" type="checkbox"/>	<input checked="" type="checkbox"/>	<input checked="" type="checkbox"/>	<input checked="" type="checkbox"/>	<input checked="" type="checkbox"/>	<input checked="" type="checkbox"/>

Configure SSID:

D-Link : Wireless Controller x
 192.168.0.10/profile_vap_summ.html?advanced=1&profile=2

Product Page: DWC-1000 Hardware Version: A1 Firmware Version: 1.01B67_WW

D-Link®

DWC-1000 // SETUP ADVANCED TOOLS STATUS HELP

Global
 Peer Controllers
 AP Profile
 SSIDs
 WIDS Security
 Captive Portal
 Client
 IPv6
 Routing
 Certificates
 Users
 IP/MAC Binding
 Radius Settings
 WLAN Radius
 Switch Settings

AP PROFILES SUMMARY LOGOUT

This page displays the virtual access point (VAP) settings associated with the selected AP profile. Each VAP is identified by its network number and Service Set Identifier (SSID).

Submit Don't Save Settings

AP Profile VAP Configuration

AP Profile: AP Profile 2-My_Office
 Radio Mode:
 1-802.11a/n
 2-802.11b/g/n

List of SSID

	Network	VLAN	L3 Tunnel	Hide SSID	Security	
<input checked="" type="checkbox"/>	1 - Office_WLAN	1-default	Disabled	Disabled	WPA Personal	None
<input checked="" type="checkbox"/>	2 - Guest_WLAN	2-	Disabled	Disabled	WPA Personal	None
<input type="checkbox"/>	3 - dlink3	1-default	Disabled	Disabled	None	None
<input type="checkbox"/>	4 - dlink4	1-default	Disabled	Disabled	None	None
<input type="checkbox"/>	5 - dlink5	1-default	Disabled	Disabled	None	None
<input type="checkbox"/>	6 - dlink6	1-default	Disabled	Disabled	None	None
<input type="checkbox"/>	7 - dlink7	1-default	Disabled	Disabled	None	None
<input type="checkbox"/>	8 - dlink8	1-default	Disabled	Disabled	None	None
<input type="checkbox"/>	9 - dlink9	1-default	Disabled	Disabled	None	None
<input type="checkbox"/>	10 - dlink10	1-default	Disabled	Disabled	None	None
<input type="checkbox"/>	11 - dlink11	1-default	Disabled	Disabled	None	None
<input type="checkbox"/>	12 - dlink12	1-default	Disabled	Disabled	None	None

Helpful Hints...
 You can configure and enable up to 16 VAPs per radio on each physical access point.
 More...

Edit:

D-Link : Wireless Controller x
192.168.0.10/profile_vap_summ.html
Product Page: DWC-1000 Hardware Version: A1 Firmware Version: 1.01B67_WW

D-Link®

DWC-1000 // SETUP ADVANCED TOOLS STATUS HELP

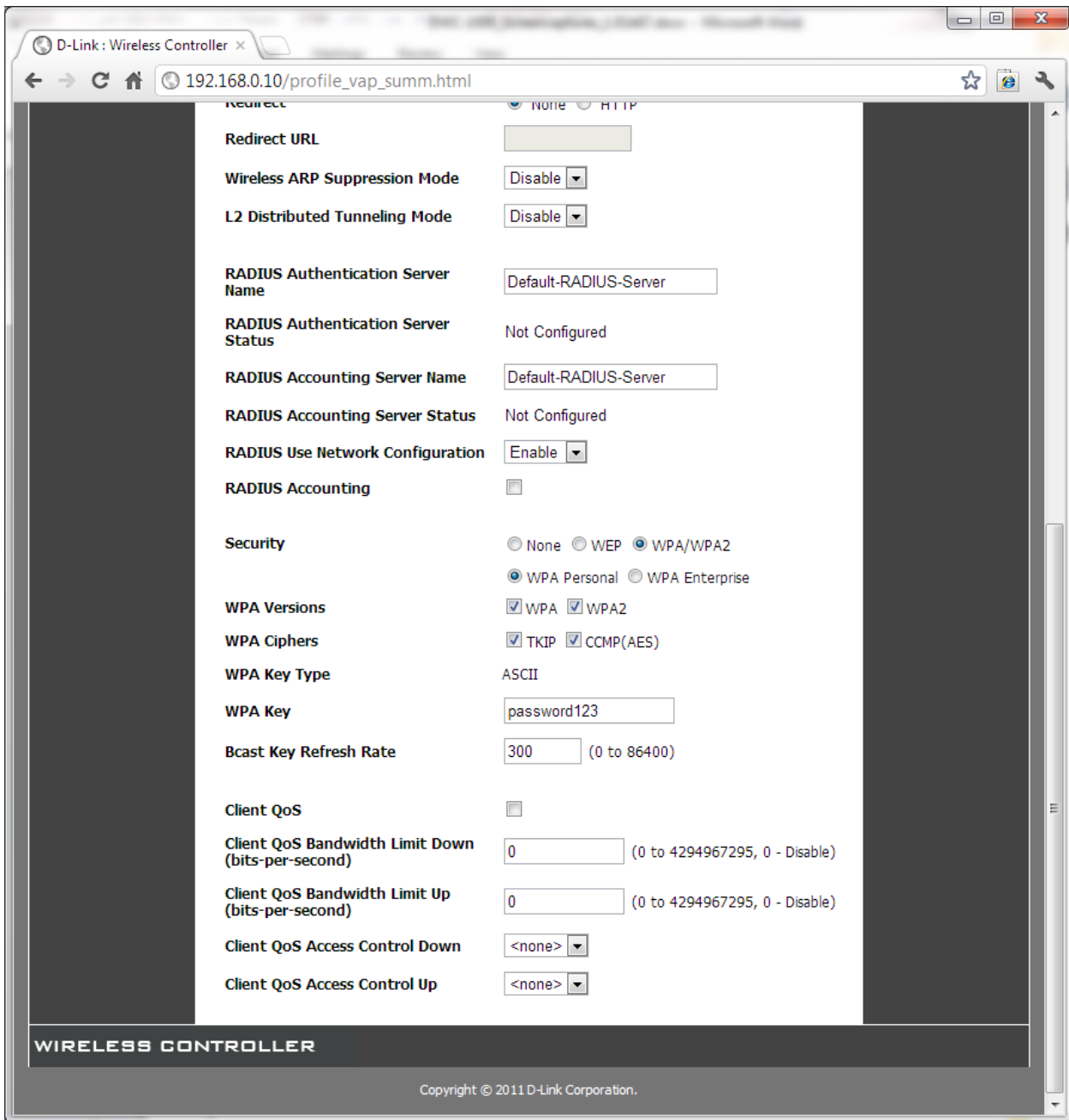
Global Peer Controllers AP Profile SSIDs WIDS Security Captive Portal Client IPv6 Routing Certificates Users IP/MAC Binding Radius Settings WLAN Radius Switch Settings

NETWORKS LOGOUT

Each network is identified by its Service Set Identifier (SSID), which is an alphanumeric key that identifies a wireless local area network. You can configure up to 64 different networks on the Unified Wireless Controller.

SSID	<input type="text" value="Guest_WLAN"/>
Hide SSID	<input type="checkbox"/>
Ignore Broadcast	<input type="checkbox"/>
VLAN	<input type="text" value="2"/> (1 to 255)
L3 Tunnel	<input type="checkbox"/>
L3 Tunnel Status	None
L3 Tunnel Subnet	<input type="text" value="0.0.0.0"/>
L3 Tunnel Mask	<input type="text" value="255.255.255.0"/>
MAC Authentication	<input type="radio"/> Local <input type="radio"/> RADIUS <input checked="" type="radio"/> Disable
Redirect	<input checked="" type="radio"/> None <input type="radio"/> HTTP
Redirect URL	<input type="text"/>
Wireless ARP Suppression Mode	<input type="text" value="Disable"/>
L2 Distributed Tunneling Mode	<input type="text" value="Disable"/>
RADIUS Authentication Server Name	<input type="text" value="Default-RADIUS-Server"/>
RADIUS Authentication Server Status	Not Configured
RADIUS Accounting Server Name	<input type="text" value="Default-RADIUS-Server"/>

Helpful Hints...
Each network can have a unique SSID, or you can configure multiple networks with the same SSID. Use Hide SSID to hide the SSID broadcast to discourage stations from automatically discovering your access point.
[More...](#)



Configure QoS:



DWC-1000 // SETUP ADVANCED TOOLS STATUS HELP

- Global
- Peer Controllers
- AP Profile
- SSIDs
- WIDS Security
- Captive Portal
- Client
- IPv6
- Routing
- Certificates
- Users
- IP/MAC Binding
- Radius Settings
- WLAN Radius
- Switch Settings

AP PROFILES SUMMARY LOGOUT

Quality of Service (QoS) provides you with the ability to specify parameters on multiple queues for increased throughput and better performance of differentiated wireless traffic like Voice-over-IP (VoIP), other types of audio, video, and streaming media as well as traditional IP data over the D-Link Unified Controller.

Submit Don't Save Settings

AP Profile QoS Configuration

AP Profile 2-My_Office

Radio Mode: 1-802.11a/n 2-802.11b/g/n
Template: Custom

AP EDCA Parameters

Data 0 (Voice)

AIFS (msecs) 1
cwMin (msecs) 3
cwMax (msecs) 7
Max. Burst (usecs) 1500

Data 1 (Video)

AIFS (msecs) 1
cwMin (msecs) 7
cwMax (msecs) 15
Max. Burst (usecs) 3000

Data 2 (Best Effort)

AIFS (msecs) 3
cwMin (msecs) 15

Helpful Hints...
To display the QoS Configuration page for an AP profile, select the tab corresponding to the profile, and click the QoS tab. Click the radio button corresponding to the radio interface you want to configure (QoS is configured per radio interface).
More...

D-Link : Wireless Controller x

192.168.0.10/APPProfileQoSConfiguration.html?1.0.2.profile_id=1&1.1.2.profile_chk=0&1.1.2.profile_

cwMax (msecs)	63
Max. Burst (usecs)	0
Data 3 (Background)	
AIFS (msecs)	7
cwMin (msecs)	15
cwMax (msecs)	1023
Max. Burst (usecs)	0
WMM Mode:	<input checked="" type="checkbox"/>

Station EDCA Parameters

Data 0 (Voice)	
AIFS (msecs)	2
cwMin (msecs)	3
cwMax (msecs)	7
TXOP Limit (32 usec units)	47
Data 1 (Video)	
AIFS (msecs)	2
cwMin (msecs)	7
cwMax (msecs)	15
TXOP Limit (32 usec units)	94
Data 2 (Best Effort)	
AIFS (msecs)	3
cwMin (msecs)	15
cwMax (msecs)	1023
TXOP Limit (32 usec units)	0
Data 3 (Background)	
AIFS (msecs)	7
cwMin (msecs)	15
cwMax (msecs)	1023
TXOP Limit (32 usec units)	0

D-Link : Wireless Controller x

192.168.0.10/WirelessNetworkSummary.html

Product Page: DWC-1000 Hardware Version: A1 Firmware Version: 1.01B67_WW

D-Link®

DWC-1000 //

Global

Peer Controllers

AP Profile

SSIDs

WIDS Security

Captive Portal

Client

IPv6

Routing

Certificates

Users

IP/MAC Binding

Radius Settings

WLAN Radius

Switch Settings

SETUP

ADVANCED

TOOLS

STATUS

HELP

NETWORKS [LOGOUT](#)

The wireless network list shows all the wireless networks configured on the controller. The first 16 networks are created by default.

Wireless Network List

ID	SSID	VLAN	Hide SSID	L3 Tunnel	Security	Redirect	
<input type="checkbox"/>	1	Office_WLAN	1-default	Disabled	Disabled	WPA PERSONAL	None
<input type="checkbox"/>	2	Guest_WLAN	2	Disabled	Disabled	WPA PERSONAL	None
<input type="checkbox"/>	3	dlink3	1-default	Disabled	Disabled	None	None
<input type="checkbox"/>	4	dlink4	1-default	Disabled	Disabled	None	None
<input type="checkbox"/>	5	dlink5	1-default	Disabled	Disabled	None	None
<input type="checkbox"/>	6	dlink6	1-default	Disabled	Disabled	None	None
<input type="checkbox"/>	7	dlink7	1-default	Disabled	Disabled	None	None
<input type="checkbox"/>	8	dlink8	1-default	Disabled	Disabled	None	None
<input type="checkbox"/>	9	dlink9	1-default	Disabled	Disabled	None	None
<input type="checkbox"/>	10	dlink10	1-default	Disabled	Disabled	None	None
<input type="checkbox"/>	11	dlink11	1-default	Disabled	Disabled	None	None
<input type="checkbox"/>	12	dlink12	1-default	Disabled	Disabled	None	None
<input type="checkbox"/>	13	dlink13	1-default	Disabled	Disabled	None	None
<input type="checkbox"/>	14	dlink14	1-default	Disabled	Disabled	None	None
<input type="checkbox"/>	15	dlink15	1-default	Disabled	Disabled	None	None
<input type="checkbox"/>	16	dlink16	1-default	Disabled	Disabled	None	None
<input type="checkbox"/>	17	test	1-default	Disabled	Disabled	None	None

Helpful Hints...

You can modify the default networks, but you cannot delete them. You can add and configure up to 48 additional networks for a total of 64 wireless networks. Multiple networks can have the same SSID.

[More...](#)

Add:

D-Link : Wireless Controller x
192.168.0.10/WirelessNetworkSummary.html

Wireless Network Configuration

Client
IPv6
Routing
Certificates
Users
IP/MAC Binding
Radius Settings
WLAN Radius
Switch Settings

More...

SSID

Hide SSID

Ignore Broadcast

VLAN (0 to 64)
Alphanumeric characters)

L3 Tunnel

L3 Tunnel Status None

L3 Tunnel Subnet

L3 Tunnel Mask

MAC Authentication Local Radius Disable

Redirect None HTTP

Redirect URL

Wireless ARP Suppression Mode

L2 Distributed Tunneling Mode

RADIUS Authentication Server Name

RADIUS Authentication Server Status Not Configured

RADIUS Accounting Server Name

RADIUS Accounting Server Status Not Configured

RADIUS Use Network Configuration

RADIUS Accounting

Security None WEP WPA/WPA2

Client QoS

Client QoS Bandwidth Limit Down

Client QoS Bandwidth Limit Up

Client QoS Access Control Down

Client QoS Access Control Up



DWC-1000 // SETUP ADVANCED TOOLS STATUS HELP

- Global
- Peer Controllers
- AP Profile
- SSIDs
- WIDS Security
- Captive Portal
- Client
- IPv6
- Routing
- Certificates
- Users
- IP/MAC Binding
- Radius Settings
- WLAN Radius
- Switch Settings

WIDS AP CONFIGURATION LOGOUT

The WIDS AP Configuration page allows you to activate or deactivate various threat detection tests and set threat detection thresholds in order to help detect rogue APs on the wireless network. These changes can be done without disrupting network connectivity. Since some of the work is done by access points, the controller to the APs to modify its WIDS operational properties.

AP Save Settings

WIDS AP Configuration

Administrator configured rogue AP	Enable
Managed SSID from an unknown AP	Enable
Managed SSID from a fake managed AP	Enable
AP without an SSID	Enable
Fake managed AP on an invalid channel	Enable
Managed SSID detected with incorrect security	Enable
Invalid SSID from a managed AP	Enable
AP is operating on an illegal channel	Enable
Standalone AP with unexpected configuration	Enable
Unexpected WDS device detected on network	Enable
Unmanaged AP detected on wired network	Enable
Rogue Detected Trap Interval (seconds)	<input type="text" value="300"/> (60 to 3600, 0-Disable)
Wired Network Detection Interval (seconds)	<input type="text" value="60"/> (1 to 3600, 0-Disable)
AP De-Authentication Attack	Disable

Helpful Hints...

The D-Link Unified Controller Wireless Intrusion Detection System (WIDS) can help detect intrusion attempts into the wireless network and take automatic actions to protect the network. The classification settings on the WIDS AP Configuration page are part of the global configuration on the controller and must be manually pushed to other controllers in order to synchronize that configuration

[More...](#)

D-Link : Wireless Controller x

192.168.0.10/widsClientConfig.html

Submit Refresh

The settings you configure on the WIDS Client Configuration page help determine whether a detected client is classified as a rogue. Clients classified as rogues are considered to be a threat to network security.

WIDS Client Configuration

Enable Not Present in OUI Database Test

Enable Not Present in Known Client Database Test

Enable Configured Authentication Rate Test

Enable Configured Probe Requests Rate Test

Enable Configured De-Authentication Requests Rate Test

Enable Maximum Authentication Failures Test

Enable Authentication with Unknown AP Test

Enable Client Threat Mitigation

Enable Known Client Database Lookup Method

Known Client Database Radius Server Name

Rogue Detected Trap Interval (seconds) (60 to 3600, 0-Disable)

De-Authentication Requests Threshold Interval (seconds) (1 to 3600)

De-Authentication Requests Threshold Value (1 to 99999)

Authentication Requests Threshold Interval (seconds) (1 to 3600)

Authentication Requests Threshold Value (1 to 99999)

Probe Requests Threshold Interval (seconds) (1 to 3600)

Probe Requests Threshold Value (1 to 99999)

Authentication Failure Threshold Value (1 to 99999)

whether a client is posing a threat to the network by flooding the network with management traffic, the system keeps track of the number of times the AP received each message type and the highest message rate detected in a single RF Scan report.

[More...](#)



DWC-1000	SETUP	ADVANCED	TOOLS	STATUS	HELP									
Global	CAPTIVE PORTAL SETUP LOGOUT				Helpful Hints... Enabling Captive Portal will result in the addition of firewall policies. This will help you to authenticate users trying to access internet. By default, Captive Portal is not enabled on any of the interfaces. More...									
Peer Controllers	Captive Portal is a security mechanism to selectively provide authentication on certain interfaces. You can use this page to manage the Policies and Profiles of CaptivePortal.													
AP Profile	Captive Portal Policies													
SSIDs	<table border="1"> <thead> <tr> <th>Policy Name</th> <th>Status</th> <th>In Interface</th> <th>Out Interface</th> </tr> </thead> <tbody> <tr> <td>Captive Portal Setup</td> <td><input type="button" value="Enable"/></td> <td><input type="button" value="Disable"/></td> <td><input type="button" value="Delete"/></td> <td><input type="button" value="Add"/></td> </tr> </tbody> </table>					Policy Name	Status	In Interface	Out Interface	Captive Portal Setup	<input type="button" value="Enable"/>	<input type="button" value="Disable"/>	<input type="button" value="Delete"/>	<input type="button" value="Add"/>
Policy Name	Status	In Interface	Out Interface											
Captive Portal Setup	<input type="button" value="Enable"/>	<input type="button" value="Disable"/>	<input type="button" value="Delete"/>	<input type="button" value="Add"/>										
WIDS Security	<table border="1"> <thead> <tr> <th>Policy Name</th> <th>Status</th> <th>Action</th> </tr> </thead> <tbody> <tr> <td>Wlan CP Interface Association</td> <td>In Use</td> <td><input type="button" value="Show Preview"/></td> </tr> <tr> <td>Wlan CP Configuration</td> <td>Not In Use</td> <td><input type="button" value="Show Preview"/></td> </tr> </tbody> </table>					Policy Name	Status	Action	Wlan CP Interface Association	In Use	<input type="button" value="Show Preview"/>	Wlan CP Configuration	Not In Use	<input type="button" value="Show Preview"/>
Policy Name	Status	Action												
Wlan CP Interface Association	In Use	<input type="button" value="Show Preview"/>												
Wlan CP Configuration	Not In Use	<input type="button" value="Show Preview"/>												
Captive Portal	<table border="1"> <thead> <tr> <th>Policy Name</th> <th>Status</th> <th>Action</th> </tr> </thead> <tbody> <tr> <td>default2</td> <td>Not In Use</td> <td><input type="button" value="Show Preview"/></td> </tr> </tbody> </table>				Policy Name	Status	Action	default2	Not In Use	<input type="button" value="Show Preview"/>				
Policy Name	Status	Action												
default2	Not In Use	<input type="button" value="Show Preview"/>												
Client	<input type="button" value="Enable"/> <input type="button" value="Edit"/> <input type="button" value="Delete"/> <input type="button" value="Add"/>													
IPv6														
Routing														
Certificates														
Users														
IP/MAC Binding														
Radius Settings														
WLAN Radius														
Switch Settings														

WIRELESS CONTROLLER

D-Link : Wireless Controller x
 192.168.0.10/platform.cgi?page=cpSetup.htm#

Product Page: DWC-1000 Hardware Version: A1 Firmware Version: 1.01B67_VW

D-Link

DWC-1000 // SETUP ADVANCED TOOLS STATUS HELP

Global
 Peer Controllers
 AP Profile
 SSIDs
 WIDS Security
 Captive Portal
 Client
 IPv6
 Routing
 Certificates
 Users
 IP/MAC Binding
 Radius Settings
 WLAN Radius
 Switch Settings

CAPTIVE PORTAL SETUP LOGOUT

Captive Portal is a security mechanism to selectively provide authentication on certain interfaces. You can use this page to manage the Policies and Profiles of CaptivePortal.

Captive Portal Policies

Policy Name	Status	In Interface	Out Interface	
<input type="button" value="Edit"/>	<input type="button" value="Enable"/>	<input type="button" value="Disable"/>	<input type="button" value="Delete"/>	<input type="button" value="Add"/>

List of Available Profiles

Profile Name	Status	Action
<input checked="" type="radio"/> default	In Use	<input type="button" value="Show Preview"/>
<input type="radio"/> default2	Not In Use	<input type="button" value="Show Preview"/>

Helpful Hints...
 Enabling Captive Portal will result in the addition of firewall policies. This will help you to authenticate users trying to access internet. By default, Captive Portal is not enabled on any of the interfaces.
[More...](#)

WIRELESS CONTROLLER

Copyright © 2011 D-Link Corporation.

Add policy:

D-Link : Wireless Controller x

192.168.0.10/platform.cgi

Product Page: DWC-1000 Hardware Version: A1 Firmware Version: 1.01B67_VW

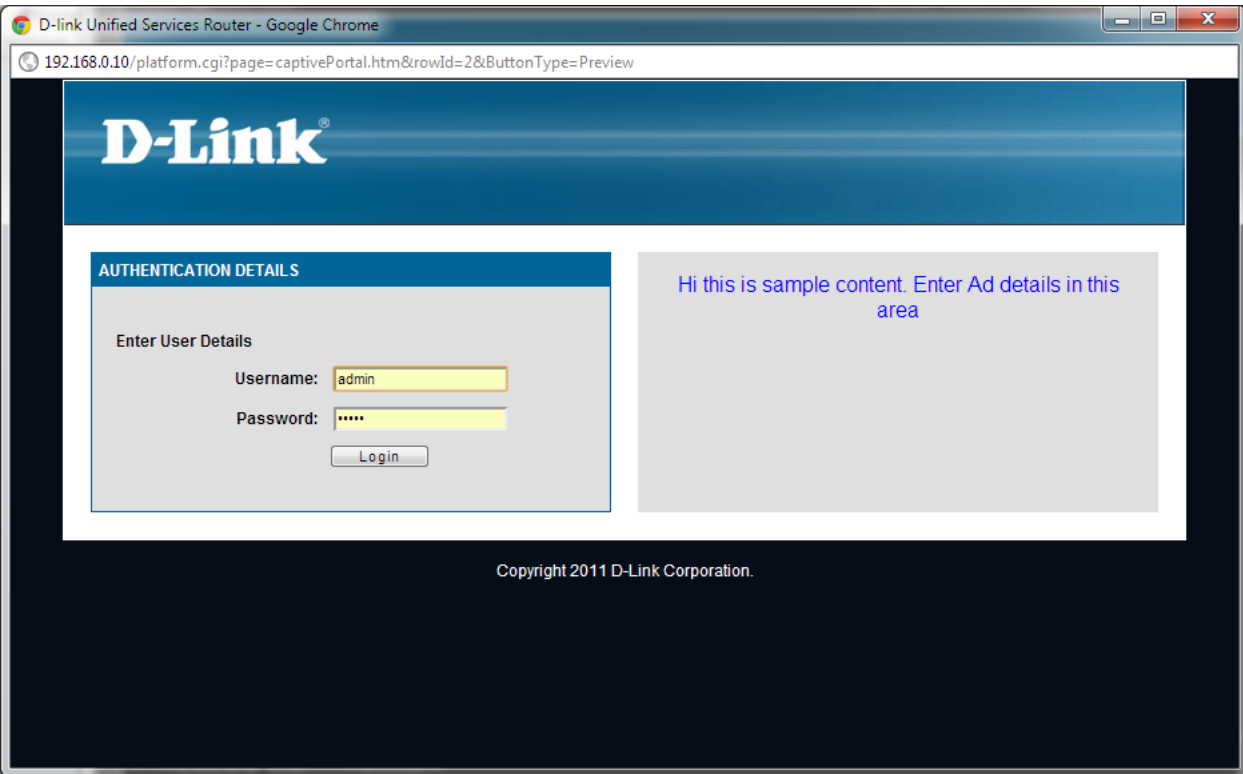
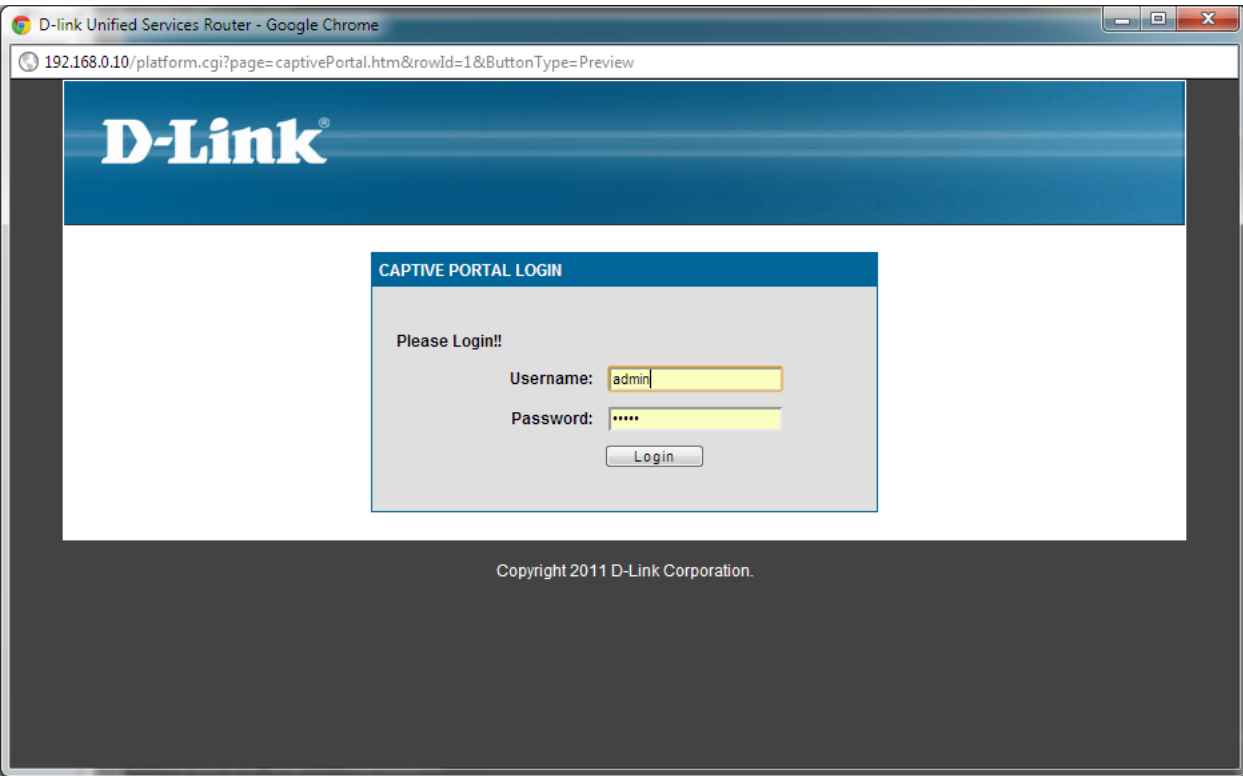
D-Link®

DWC-1000	SETUP	ADVANCED	TOOLS	STATUS	HELP
Global	CAPTIVE PORTAL CONFIGURATION LOGOUT				Helpful Hints... Enabling Captive Portal will result in the addition of firewall policies. This will help you to authenticate users trying to access internet. By default, Captive Portal is not enabled on any of the interfaces. More...
Peer Controllers	This page allows you to add a new captive Portal Policy or edit the configuration of an existing Policy. The details will then be displayed in the List of Captive Portal Policies table on the cpSetup page. <input type="button" value="Save Settings"/> <input type="button" value="Don't Save Settings"/>				
AP Profile	Captive Portal Configuration				
SSIDs	Policy Name: <input type="text"/>				
WIDS Security	From InterfaceName: <input type="text" value="VLAN-Guest"/>				
Captive Portal	To InterfaceName: <input type="text" value="Option"/>				
Client	Enable: <input type="checkbox"/>				
IPv6					
Routing					
Certificates					
Users					
IP/MAC Binding					
Radius Settings					
WLAN Radius					
Switch Settings					

WIRELESS CONTROLLER

Copyright © 2011 D-Link Corporation.

Preview:



D-Link : Wireless Controller x
 192.168.0.10/platform.cgi
 Product Page: DWC-1000 Hardware Version: A1 Firmware Version: 1.01B67_WW

D-Link®

DWC-1000	SETUP	ADVANCED	TOOLS	STATUS	HELP
Global	CUSTOMIZED CAPTIVE PORTAL SETUP LOGOUT				Helpful Hints... Captive portal login page display can be altered by modifying the settings available here. More...
Peer Controllers	Captive Portal Login page is used for authentication on Captive Portal enabled interfaces.				
AP Profile	<input type="button" value="Save Settings"/> <input type="button" value="Don't Save Settings"/>				
SSIDs	General Details				
WIDS Security	Profile Name: <input type="text"/> Browser Title: <input type="text"/> Page Background Color: White <input type="button" value="v"/> Custom Color: (#) <input type="text" value="CF00CF"/> (CF00CF)				
Captive Portal	Header Details				
Client	Background: <input type="button" value="Image"/> <input type="button" value="v"/> <input checked="" type="radio"/>  Default <input type="button" value="Add"/> <input type="radio"/> <input type="text" value=""/> <input type="button" value="Add"/> <input type="radio"/> <input type="text" value=""/> <input type="button" value="Add"/> <input type="radio"/> <input type="text" value=""/> <input type="button" value="Add"/> <input type="radio"/> <input type="text" value=""/> <input type="button" value="Add"/>				
IPv6	Header Background Color: White <input type="button" value="v"/> Custom Color: (#) <input type="text" value="CF00CF"/> (CF00CF)				
Routing	Header Caption: <input type="text"/> Caption Font: Tahoma <input type="button" value="v"/> Font Size: Small <input type="button" value="v"/> Font Color: Red <input type="button" value="v"/>				
Certificates	Login Details				
Users	Login Section Title: <input type="text" value="CAPTIVE PORTAL LOGIN"/> (Optional) Welcome Message: <input type="text" value="Please Login!"/> (Optional) Error Message: <input type="text" value="Invalid UserName/Password"/> (Optional)				
IP/MAC Binding	Advertisement Details				
Radius Settings					
WLAN Radius					
Switch Settings					

D-Link : Wireless Controller x
192.168.0.10/platform.cgi

- Certificates
- Users
- IP/MAC Binding
- Radius Settings
- WLAN Radius
- Switch Settings

Custom Color: (#) (CF00CF)

Header Details

Background: Image

Header Background Color: White

Custom Color: (#) (CF00CF)

Header Caption:

Caption Font: Tahoma

Font Size: Small

Font Color: Red

Login Details

Login Section Title: CAPTIVE PORTAL LOGIN (Optional)

Welcome Message: Please Login! (Optional)

Error Message: Invalid UserName/Password (Optional)

Advertisement Details

Enable Advertisement:

Ad Place: Right

Ad Content:

Font: Tahoma

Font Size: Small

Font Color: Red

Footer Details

Change Footer Content:

Footer Content:

Footer Font Color: White

WIRELESS CONTROLLER

Copyright © 2011 D-Link Corporation.

D-Link : Wireless Controller x

192.168.0.10/platform.cgi?page=activeRunTimeSession.htm

Product Page: DWC-1000 Hardware Version: A1 Firmware Version: 1.01B67_VW

D-Link®

DWC-1000	SETUP	ADVANCED	TOOLS	STATUS	HELP
Global	CAPTIVE PORTAL SESSIONS LOGOUT				Helpful Hints... Use this page to monitor the runtime authentication sessions that are active on your router. More...
Peer Controllers	This page displays a list of active run time sessions on your router.				
AP Profile	List of Captive Portal Sessions				
SSIDs	<input type="checkbox"/>	Username	IP Address		
WIDS Security	Disconnect				
Captive Portal					
Client					
IPv6					
Routing					
Certificates					
Users					
IP/MAC Binding					
Radius Settings					
WLAN Radius					
Switch Settings					

WIRELESS CONTROLLER

Copyright © 2011 D-Link Corporation.

D-Link : Wireless Controller x
192.168.0.10/cp_intf_assoc_cfg.html

Product Page: DWC-1000 Hardware Version: A1 Firmware Version: 1.01B67_WW

D-Link®

DWC-1000	SETUP	ADVANCED	TOOLS	STATUS	HELP
----------	-------	----------	-------	--------	------

- Global
- Peer Controllers
- AP Profile
- SSIDs
- WIDS Security
- Captive Portal
- Client
- IPv6
- Routing
- Certificates
- Users
- IP/MAC Binding
- Radius Settings
- WLAN Radius
- Switch Settings

CAPTIVE PORTAL LOGOUT

You can associate a configured captive portal with a specific physical interface or wireless network (SSID). The CP feature only runs on the wired or wireless interfaces that you specify.

Captive Portal Interface association

Interface List

- 6/1-Wireless Network 1 - Office_WLAN
- 6/3-Wireless Network 3 - dlink3
- 6/4-Wireless Network 4 - dlink4
- 6/5-Wireless Network 5 - dlink5
- 6/6-Wireless Network 6 - dlink6
- 6/7-Wireless Network 7 - dlink7
- 6/8-Wireless Network 8 - dlink8
- 6/9-Wireless Network 9 - dlink9

Associated Interfaces

- 6/2-Wireless Network 2 - Guest_WLAN

Helpful Hints...
A CP can have multiple interfaces associated with it, but an interface can be associated to only one CP at a time.
[More...](#)

WIRELESS CONTROLLER

D-Link : Wireless Controller x
192.168.0.10/cp_cfg_mgmt.html?cp=1

Product Page: DWC-1000 Hardware Version: A1 Firmware Version: 1.01B67_WW

D-Link®

DWC-1000	SETUP	ADVANCED	TOOLS	STATUS	HELP
Global	CONFIGURATION ITEMS LOGOUT				Helpful Hints...
Peer Controllers	Description goes here...				Hint text goes here...
AP Profile	<input type="button" value="Submit"/> <input type="button" value="Don't Save Settings"/>				More...
SSIDs	WLAN CP Configuration				
WIDS Security	Verification Mode <input type="radio"/> Guest <input checked="" type="radio"/> Local <input type="radio"/> RADIUS				
Captive Portal	RADIUS Auth Server <input type="text" value="Default-RADIUS-Server"/> ...				
Client	User Group <input type="text" value="1-Default"/> ▾				
IPv6	<input type="button" value="Clear"/> <input type="button" value="Refresh"/>				
Routing					
Certificates					
Users					
IP/MAC Binding					
Radius Settings					
WLAN Radius					
Switch Settings					

WIRELESS CONTROLLER

Copyright © 2011 D-Link Corporation.

D-Link : Wireless Controller x

192.168.0.10/wireless_kc_summ.html

Product Page: DWC-1000 Hardware Version: A1 Firmware Version: 1.01B67_VW

D-Link®

DWC-1000 //	SETUP	ADVANCED	TOOLS	STATUS	HELP
Global ▶	<h2>KNOWN CLIENTS LOGOUT</h2> <p>The Known Client Summary shows the wireless clients currently in the Known Client Database and allows you to add new clients or modify existing clients to the database.</p>				Helpful Hints... The database contains wireless client MAC addresses and names. The database is used to retrieve client descriptive names from the RADIUS server as well as implement MAC Authentication. More...
Peer Controllers ▶					
AP Profile	<h3>List of Known Clients</h3>				
SSIDs	<p style="text-align: center;">No Known Client entries exist.</p>				
WIDS Security ▶	<p style="text-align: center;">Client <input type="text" value="00:00:00:00:00:00"/></p> <p style="text-align: center;"><input type="button" value="Add"/></p>				
Captive Portal ▶					
Client					
IPv6 ▶					
Routing ▶					
Certificates					
Users ▶					
IP/MAC Binding					
Radius Settings					
WLAN Radius ▶					
Switch Settings					

WIRELESS CONTROLLER

Copyright © 2011 D-Link Corporation.

D-Link : Wireless Controller x

192.168.0.10/wireless_kc_summ.html

Product Page: DWC-1000 Hardware Version: A1 Firmware Version: 1.01B67_VW

D-Link

DWC-1000	SETUP	ADVANCED	TOOLS	STATUS	HELP
Global					Helpful Hints... The database contains wireless client MAC addresses and names. The database is used to retrieve client descriptive names from the RADIUS server as well as implement MAC Authentication. More...
Peer Controllers	KNOWN CLIENTS LOGOUT				
AP Profile	The Known Client Summary shows the wireless clients currently in the Known Client Database and allows you to add new clients or modify existing clients to the database.				
SSIDs	List of Known Clients				
WIDS Security	No Known Client entries exist.				
Captive Portal	Client <input type="text" value="00:00:00:00:00:00"/>				
Client	<input type="button" value="Add"/>				
IPv6	IP Mode				
Routing	IPv6 Option1 Config				
Certificates	IPv6 LAN				
Users	IPv6 Static Routing				
IP/MAC Binding					
Radius Settings					
WLAN Radius					
Switch Settings					

WIRELESS CONTROLLER

Copyright © 2011 D-Link Corporation.

192.168.0.10/wireless_kc_summ.html#

D-Link : Wireless Controller x

192.168.0.10/platform.cgi?page=staticRouting.htm

Product Page: DWC-1000 Hardware Version: A1 Firmware Version: 1.01B67_VW

D-Link®

DWC-1000 // SETUP ADVANCED TOOLS STATUS HELP

Global ▶
Peer Controllers ▶
AP Profile
SSIDs
WIDS Security ▶
Captive Portal ▶
Client
IPv6 ▶
Routing ▶
Certificates
Users ▶
IP/MAC Binding
Radius Settings
WLAN Radius ▶
Switch Settings

STATIC ROUTING LOGOUT

This page shows the list of static routes configured on the router. User can also add, delete and edit the configured routes.

List of Static Routes

<input type="checkbox"/>	Name	Destination	Subnet Mask	Gateway	Interface	Metric	Active	Private
<input type="button" value="Edit"/> <input type="button" value="Delete"/> <input type="button" value="Add"/>								

Helpful Hints...
Use this page to define static routes. Be sure to enter a destination address, subnet mask, gateway and metric for each configured static route. The Interface dropdown menu will show all available configured wired interfaces on the router as options.
[More...](#)

WIRELESS CONTROLLER

Copyright © 2011 D-Link Corporation.

D-Link : Wireless Controller x
 192.168.0.10/platform.cgi
 Product Page: DWC-1000 Hardware Version: A1 Firmware Version: 1.01B67_VW

D-Link®

DWC-1000	SETUP	ADVANCED	TOOLS	STATUS	HELP
Global	STATIC ROUTE CONFIGURATION LOGOUT				Helpful Hints... Static routes can be used for routing the traffic. You can select the interface from where you want to route the traffic. More...
Peer Controllers	This page allows user to add a new static route.				
AP Profile	<input type="button" value="Save Settings"/> <input type="button" value="Don't Save Settings"/>				
SSIDs	Static Route Configuration				
WIDS Security	Route Name:	<input type="text"/>			
Captive Portal	Active:	<input type="checkbox"/>			
Client	Private:	<input type="checkbox"/>			
IPv6	Destination IP Address:	<input type="text"/>			
Routing	IP Subnet Mask:	<input type="text"/>			
Certificates	Interface:	<input type="text" value="Option"/> <ul style="list-style-type: none"> Option LAN >VLAN LAN2 >VLAN 			
Users	Gateway IP Address:	<input type="text"/>			
IP/MAC Binding	Metric:	<input type="text"/>			
Radius Settings	WIRELESS CONTROLLER				
WLAN Radius	Copyright © 2011 D-Link Corporation.				
Switch Settings					

D-Link : Wireless Controller x

192.168.0.10/platform.cgi?page=certificates.htm

Product Page: DWC-1000 Hardware Version: A1 Firmware Version: 1.01B67_WW

D-Link®

DWC-1000	SETUP	ADVANCED	TOOLS	STATUS	HELP
Global	CERTIFICATES LOGOUT				Helpful Hints... IPsec VPN, SSL VPN, and management over HTTPS use digital certificates. The router has a default self-signed certificate, and this can be replaced by one signed by a known Certificate Authority if needed. Note that a CA certificate provides strong assurance of the server's identity and is a requirement for most corporate network VPN solutions. More...
Peer Controllers	Digital Certificates (also known as X509 Certificates) are used to authenticate the identity of users and systems, and are issued by Certification Authorities (CA) such as VeriSign, Thawte and other organizations. Digital Certificates are used by this router during the Internet Key Exchange (IKE) authentication phase to authenticate connecting VPN gateways or clients, or to be authenticated by remote entities.				
AP Profile	Trusted Certificates (CA Certificate)				
SSIDs	<input type="checkbox"/> CA Identity (Subject Name) Issuer Name Expiry Time				
WIDS Security	<input type="button" value="Upload"/> <input type="button" value="Delete"/>				
Captive Portal	Active Self Certificates				
Client	<input type="checkbox"/> Name Subject Name Serial Number Issuer Name Expiry Time				
IPv6	<input type="button" value="Upload"/> <input type="button" value="Delete"/>				
Routing	Self Certificate Requests				
Certificates	<input type="checkbox"/> Name Status Action				
Users	<input type="button" value="New Self Certificate"/> <input type="button" value="Delete"/>				
IP/MAC Binding					
Radius Settings					
WLAN Radius					
Switch Settings					

WIRELESS CONTROLLER

Copyright © 2011 D-Link Corporation.

New Self Certificate:

D-Link : Wireless Controller x

192.168.0.10/platform.cgi

Product Page: DWC-1000 Hardware Version: A1 Firmware Version: 1.01B67_VW

D-Link®

DWC-1000	SETUP	ADVANCED	TOOLS	STATUS	HELP
Global	GENERATE SELF CERTIFICATE REQUEST LOGOUT				Helpful Hints... More...
Peer Controllers	This page allows user to generate a self certificate using a custom configuration.				
AP Profile	<input type="button" value="Save Settings"/> <input type="button" value="Don't Save Settings"/>				
SSIDs	Generate Self Certificate Request				
WIDS Security	Name: <input type="text"/>				
Captive Portal	Subject: <input type="text"/>				
Client	Hash Algorithm: <input type="text" value="MD5"/>				
IPv6	Signature Key Length: <input type="text" value="512"/>				
Routing	IP Address (Optional) : <input type="text"/>				
Certificates	Domain Name (Optional) : <input type="text"/>				
Users	Email Address (Optional) : <input type="text"/>				
IP/MAC Binding					
Radius Settings					
WLAN Radius					
Switch Settings					

WIRELESS CONTROLLER

Copyright © 2011 D-Link Corporation.

D-Link : Wireless Controller x

192.168.0.10/platform.cgi

Product Page: DWC-1000 Hardware Version: A1 Firmware Version: 1.01B67_VW

D-Link®

DWC-1000	SETUP	ADVANCED	TOOLS	STATUS	HELP
Global	GENERATE SELF CERTIFICATE REQUEST LOGOUT				Helpful Hints... More...
Peer Controllers	This page allows user to generate a self certificate using a custom configuration.				
AP Profile	<input type="button" value="Save Settings"/> <input type="button" value="Don't Save Settings"/>				
SSIDs	Generate Self Certificate Request				
WIDS Security	Name: <input type="text"/>				
Captive Portal	Subject: <input type="text"/>				
Client	Hash Algorithm: <input type="text" value="SHA1"/>				
IPv6	Signature Key Length: <input type="text" value="2048"/>				
Routing	IP Address (Optional) : <input type="text"/>				
Certificates	Domain Name (Optional) : <input type="text"/>				
Users	Email Address (Optional) : <input type="text"/>				
IP/MAC Binding					
Radius Settings					
WLAN Radius					
Switch Settings					

WIRELESS CONTROLLER

Copyright © 2011 D-Link Corporation.

D-Link : Wireless Controller x

192.168.0.10/platform.cgi?page=getUsersDB.htm

Product Page: DWC-1000 Hardware Version: A1 Firmware Version: 1.01B67_VW

D-Link®

DWC-1000 //	SETUP	ADVANCED	TOOLS	STATUS	HELP
Global ▶					Helpful Hints... The user may only add system users using the CSV file upload mechanism. Before adding users to different groups, the groups must be created using GUI. Also edit and delete operations on users can be more conveniently handled through GUI as it is much easier to select a particular user for edit/delete. This mechanism of csv file upload is more convenient than GUI only for adding a large number of users where users could be added at one go rather than one at a time through the GUI. More...
Peer Controllers ▶	GET USERS DB LOGOUT				
AP Profile	This page allows user to import a CSV formatted user database to the router.				
SSIDs	Get Users DB				
WIDS Security ▶	Get Users DB file: <input type="button" value="Choose File"/> No file chosen <input type="button" value="Upload"/>				
Captive Portal ▶					
Client					
IPv6 ▶					
Routing ▶					
Certificates					
Users ▶	Get Users DB				
IP/MAC Binding	Groups				
Radius Settings	Users				
WLAN Radius ▶					
Switch Settings					

WIRELESS CONTROLLER

Copyright © 2011 D-Link Corporation.

192.168.0.10/platform.cgi?page=getUsersDB.htm#

D-Link : Wireless Controller x

192.168.0.10/platform.cgi?page=groups.htm

Product Page: DWC-1000 Hardware Version: A1 Firmware Version: 1.01B67_VW

D-Link

DWC-1000 // SETUP ADVANCED TOOLS STATUS HELP

Global Peer Controllers AP Profile SSIDs WIDS Security Captive Portal Client IPv6 Routing Certificates Users IP/MAC Binding Radius Settings WLAN Radius Switch Settings

GROUPS LOGOUT

This page shows the list of added groups to the router. The user can add, delete and edit the groups also.

List of Groups

<input type="checkbox"/>	Group	Description
<input type="checkbox"/>	ADMIN	Admin Group
<input type="checkbox"/>	GUEST	Guest Group

Edit Delete Add

Login Policies Policies By Browsers Policies By IP

Helpful Hints...
Login policies, Policies by Browser and Policies by IP can only be configured for groups having sslvpn privileges.
[More...](#)

WIRELESS CONTROLLER

Copyright © 2011 D-Link Corporation.

Add:

D-Link : Wireless Controller x

192.168.0.10/platform.cgi

Product Page: DWC-1000 Hardware Version: A1 Firmware Version: 1.01B67_VW

D-Link®

DWC-1000 //	SETUP	ADVANCED	TOOLS	STATUS	HELP
Global ▶	GROUP CONFIGURATION LOGOUT				Helpful Hints... Do you know that you can associate multiple users to a single group. More...
Peer Controllers ▶	This page allows user to add a new user group. Once this group is added, a user can then add system users to it. <div style="text-align: center;"> <input type="button" value="Save Settings"/> <input type="button" value="Don't Save Settings"/> </div>				
AP Profile	Group Configuration				
SSIDs	Group Name: <input type="text"/> Description: <input type="text"/>				
WIDS Security ▶	User Type				
Captive Portal ▶	Admin: <input type="checkbox"/> Guest User (readonly): <input type="checkbox"/> Captive Portal User: <input type="checkbox"/>				
Client	Idle Timeout: <input type="text" value="10"/> (Seconds)				
IPv6 ▶					
Routing ▶					
Certificates					
Users ▶					
IP/MAC Binding					
Radius Settings					
WLAN Radius ▶					
Switch Settings					

WIRELESS CONTROLLER

Copyright © 2011 D-Link Corporation.

D-Link : Wireless Controller x

192.168.0.10/platform.cgi?page=users.htm

Product Page: DWC-1000 Hardware Version: A1 Firmware Version: 1.01B67_VW

D-Link®

DWC-1000 // SETUP ADVANCED TOOLS STATUS HELP

- Global
- Peer Controllers
- AP Profile
- SSIDs
- WIDS Security
- Captive Portal
- Client
- IPv6
- Routing
- Certificates
- Users
- IP/MAC Binding
- Radius Settings
- WLAN Radius
- Switch Settings

USERS LOGOUT

This page shows a list of available users in the system. A user can add, delete and edit the users also. This page can also be used for setting policies on users.

List of Users

<input type="checkbox"/>	User Name	Group	Login Status
<input type="checkbox"/>	admin	ADMIN	Enabled (LAN) Enabled (OPTION)
<input type="checkbox"/>	guest	GUEST	Disabled (LAN) Disabled (OPTION)

Edit Delete Add

Helpful Hints...
Authentication of the users (IPsec, SSL VPN, or GUI) is done by the router using either a local database on the router or external authentication servers (i.e. LDAP or RADIUS). User level policies can be specified by browser, IP address of the host, and whether the user can login to the router's GUI in addition to the SSL VPN portal

[More...](#)

WIRELESS CONTROLLER

Copyright © 2011 D-Link Corporation.

D-Link : Wireless Controller x
 192.168.0.10/platform.cgi
 Hardware Version: A1 Firmware Version: 1.01B67_VW

D-Link®

DWC-1000	SETUP	ADVANCED	TOOLS	STATUS	HELP
Global	USERS CONFIGURATION LOGOUT				Helpful Hints... If an user is added to a group that has more than one privilege, one requiring authentication from the local database and the other from some remote database like RADIUS, a valid password needs to be provided. However the local password will only be used for the group requiring authentication from the local database. For the group that has chosen remote authentication, the remote credentials will be used and not the local ones. More...
Peer Controllers	This page allows a user to add new system users. <input type="button" value="Save Settings"/> <input type="button" value="Don't Save Settings"/>				
AP Profile	Users Configuration				
SSIDs	User Name: <input type="text"/> First Name: <input type="text"/> Last Name: <input type="text"/> Select Group: ADMIN ▾ ADMIN GUEST				
WIDS Security	Password: <input type="password"/> Confirm Password: <input type="password"/> Idle Timeout: <input type="text"/> (Minutes)				
Captive Portal					
Client					
IPv6					
Routing					
Certificates					
Users					
IP/MAC Binding					
Radius Settings					
WLAN Radius					
Switch Settings					

WIRELESS CONTROLLER

Copyright © 2011 D-Link Corporation.

D-Link : Wireless Controller x

192.168.0.10/platform.cgi?page=ipMacBinding.htm

Product Page: DWC-1000 Hardware Version: A1 Firmware Version: 1.01B67_VW

D-Link®

DWC-1000	SETUP	ADVANCED	TOOLS	STATUS	HELP										
Global	IP/MAC BINDING LOGOUT				Helpful Hints... This feature allows protection against spoofed IP addresses by enforcing the gateway to validate the source traffic's IP address with the unique MAC Address of the configured LAN node. In the event of a violation (i.e. the traffic's source IP address doesn't match up with the expected MAC address having the same IP address) the packets will be dropped and can be logged for diagnosis. More...										
Peer Controllers	The table lists all the currently defined IP/MAC Bind rules and allows several operations on the rules.														
AP Profile	List of IP/MAC Binding														
SSIDs	<table border="1"> <thead> <tr> <th><input type="checkbox"/></th> <th>Name</th> <th>MAC Address</th> <th>IP Address</th> <th>Log Dropped Packets</th> </tr> </thead> <tbody> <tr> <td colspan="5" style="text-align: center;"> <input type="button" value="Edit"/> <input type="button" value="Delete"/> <input type="button" value="Add"/> </td> </tr> </tbody> </table>					<input type="checkbox"/>	Name	MAC Address	IP Address	Log Dropped Packets	<input type="button" value="Edit"/> <input type="button" value="Delete"/> <input type="button" value="Add"/>				
<input type="checkbox"/>	Name	MAC Address	IP Address	Log Dropped Packets											
<input type="button" value="Edit"/> <input type="button" value="Delete"/> <input type="button" value="Add"/>															
WIDS Security															
Captive Portal															
Client															
IPv6															
Routing															
Certificates															
Users															
IP/MAC Binding															
Radius Settings															
WLAN Radius															
Switch Settings															

WIRELESS CONTROLLER

Copyright © 2011 D-Link Corporation.

D-Link : Wireless Controller x

192.168.0.10/platform.cgi?page=radiusConfig.htm

Product Page: DWC-1000 Hardware Version: A1 Firmware Version: 1.01B67_WW

D-Link®

DWC-1000	SETUP	ADVANCED	TOOLS	STATUS	HELP
Global	RADIUS SERVER LOGOUT				Helpful Hints... The RADIUS server is an external authentication server that can be used to associate wireless clients to an AP using RADIUS authentication. This authentication is also referred to as Enterprise mode, and is available for WPA or WPA2 security. More...
Peer Controllers	<p>This page configures the RADIUS servers to be used for authentication. A RADIUS server maintains a database of user accounts used in larger environments. If a RADIUS server is configured in the LAN, it can be used for authenticating users that want to connect to the wireless network provided by this device. If the first/primary RADIUS server is not accessible at any time, then the device will attempt to contact the secondary RADIUS server for user authentication.</p> <p> <input type="button" value="Save Settings"/> <input type="button" value="Don't Save Settings"/> </p>				
AP Profile	Radius Server Configuration				
SSIDs	<p>Authentication Server IP Address (Primary): <input type="text" value="192.168.1.2"/></p> <p>Authentication Port: <input type="text" value="1812"/></p> <p>Secret: <input type="text" value="*****"/></p> <p>Timeout: <input type="text" value="1"/> (Seconds)</p> <p>Retries: <input type="text" value="2"/></p>				
WIDS Security	<p>Authentication Server IP Address (Secondary): <input type="text" value="192.168.1.3"/></p> <p>Authentication Port: <input type="text" value="1812"/></p> <p>Secret: <input type="text" value="*****"/></p> <p>Timeout: <input type="text" value="1"/> (Seconds)</p> <p>Retries: <input type="text" value="2"/></p>				
Captive Portal					
Client					
IPv6					
Routing					
Certificates					
Users					
IP/MAC Binding					
Radius Settings					
WLAN Radius					
Switch Settings					

WIRELESS CONTROLLER

D-Link : Wireless Controller x

192.168.0.10/RadiusCfg.html

Product Page: DWC-1000 Hardware Version: A1 Firmware Version: 1.01B67_VW

D-Link®

DWC-1000 //	SETUP	ADVANCED	TOOLS	STATUS	HELP							
Global	CONFIGURATION ITEMS LOGOUT				Helpful Hints... Hint text goes here... More...							
Peer Controllers	Description goes here...											
AP Profile	<input type="button" value="Submit"/> <input type="button" value="Don't Save Settings"/>											
SSIDs	Radius Configuration											
WIDS Security	<table border="0"> <tr> <td>Number of Configured Authentication Servers</td> <td>0</td> </tr> <tr> <td>Number of Named Authentication Server Groups</td> <td>0</td> </tr> <tr> <td>Max Number of Retransmits</td> <td> <input type="text" value="4"/> (1-15) </td> </tr> <tr> <td>Timeout Duration (secs)</td> <td> <input type="text" value="5"/> (1-30) </td> </tr> </table>				Number of Configured Authentication Servers	0	Number of Named Authentication Server Groups	0	Max Number of Retransmits	<input type="text" value="4"/> (1-15)	Timeout Duration (secs)	<input type="text" value="5"/> (1-30)
Number of Configured Authentication Servers	0											
Number of Named Authentication Server Groups	0											
Max Number of Retransmits	<input type="text" value="4"/> (1-15)											
Timeout Duration (secs)	<input type="text" value="5"/> (1-30)											
Captive Portal	<table border="0"> <tr> <td>WLAN Radius</td> <td>▶ RADIUS Configuration</td> </tr> <tr> <td>Switch Settings</td> <td>▶ RADIUS Authentication Server Configuration</td> </tr> <tr> <td>WIRELESS CO</td> <td>▶ Clear RADIUS Statistics</td> </tr> </table>				WLAN Radius	▶ RADIUS Configuration	Switch Settings	▶ RADIUS Authentication Server Configuration	WIRELESS CO	▶ Clear RADIUS Statistics		
WLAN Radius	▶ RADIUS Configuration											
Switch Settings	▶ RADIUS Authentication Server Configuration											
WIRELESS CO	▶ Clear RADIUS Statistics											

Copyright © 2011 D-Link Corporation.

192.168.0.10/RadiusCfg.html#

D-Link : Wireless Controller x

192.168.0.10/RadiusServCfg.html

Product Page: DWC-1000 Hardware Version: A1 Firmware Version: 1.01B67_VW

D-Link®

DWC-1000	SETUP	ADVANCED	TOOLS	STATUS	HELP
Global	CONFIGURATION ITEMS LOGOUT				Helpful Hints...
Peer Controllers	Description goes here...				Hint text goes here...
AP Profile	<input type="button" value="Submit"/> <input type="button" value="Don't Save Settings"/>				More...
SSIDs	Radius Authentication Server Configuration				
WIDS Security	RADIUS Server Host Address <input type="button" value="Add"/>				
Captive Portal	RADIUS Server Host Address <input type="text"/> NonRecurring				
Client	RADIUS Server Name <input type="text" value="Default-RADIUS-Server"/> (Max 31 characters)				
IPv6					
Routing					
Certificates					
Users					
IP/MAC Binding					
Radius Settings					
WLAN Radius					
Switch Settings					

WIRELESS CONTROLLER

Copyright © 2011 D-Link Corporation.

D-Link : Wireless Controller x

192.168.0.10/platform.cgi?page=powerSaving.htm

Product Page: DWC-1000 Hardware Version: A1 Firmware Version: 1.01B67_VW

D-Link®

DWC-1000	SETUP	ADVANCED	TOOLS	STATUS	HELP
Global	SWITCH SETTINGS LOGOUT				Helpful Hints... There are two options available to support power efficiency on the router. With Length Detection State enabled, the Ethernet cable link length will be detected by the router and power to the port will be modified accordingly. Jumbo Frames option is available to exchange traffic containing Jumbo Frames on Lan side Devices. More...
Peer Controllers	This page allows user to enable/disable power saving, jumbo frames in the router. <input type="button" value="Save Settings"/> <input type="button" value="Don't Save Settings"/>				
AP Profile	Power Saving Options				
SSIDs	Power Saving by Link Status: <input checked="" type="checkbox"/> Power Saving by Cable Length: <input checked="" type="checkbox"/>				
WIDS Security	Jumbo Frames Option				
Captive Portal	Enable Jumbo Frames: <input type="checkbox"/>				
Client					
IPv6					
Routing					
Certificates					
Users					
IP/MAC Binding					
Radius Settings					
WLAN Radius					
Switch Settings					

WIRELESS CONTROLLER

Copyright © 2011 D-Link Corporation.

Product Page: DWC-1000 Hardware Version: A1 Firmware Version: 1.01B67_VW

D-Link®

DWC-1000	SETUP	ADVANCED	TOOLS	STATUS	HELP
Admin	Admin Settings				Helpful Hints... The System Name identifies the router for node identification and remote logging. More...
Date and Time	SNMP			LOGOUT	
Log Settings	SNMP System Info	Set the router identification name.			
System	<input type="button" value="Save Settings"/> <input type="button" value="Don't Save Settings"/>				
Firmware	System Name				
Firmware via USB	System Name: <input type="text" value="DWC-1000"/>				
System Check					
License					

WIRELESS CONTROLLER

Copyright © 2011 D-Link Corporation.

192.168.0.10/platform.cgi?page=adminSettings.htm#



- DWC-1000** //
- Admin ▾
- Date and Time
- Log Settings ▾
- System
- Firmware
- Firmware via USB
- System Check
- License

- SETUP**
- ADVANCED**
- TOOLS**
- STATUS**
- HELP**

SNMP LOGOUT

Simple Network Management Protocol (SNMP) lets you monitor and manage your router from an SNMP manager. SNMP provides a remote means to monitor and control network devices, and to manage configurations, statistics collection, performance, and security.

SNMP v3 Users List

	Name	Privilege	Security level
<input type="checkbox"/>	admin	RWUSER	NoAuthNoPriv
<input type="checkbox"/>	guest	ROUSER	NoAuthNoPriv

Traps List

<input type="checkbox"/>	IP Address	Port	Community	SNMP Version
<input type="button" value="Edit"/> <input type="button" value="Delete"/> <input type="button" value="Add"/>				

Access Control List

<input type="checkbox"/>	IP Address	Subnet Mask	Community	Access Type
<input type="button" value="Edit"/> <input type="button" value="Delete"/> <input type="button" value="Add"/>				

Helpful Hints...

SNMP is useful when multiple routers in a network are being managed by a central Master system. When an external SNMP manager is provided with this router's Management Information Base (MIB) file, the manager can update the router's hierarchal variables to view or update configuration parameters.

[More...](#)

Product Page: DWC-1000 Hardware Version: A1 Firmware Version: 1.01B67_VW

D-Link®

DWC-1000	SETUP	ADVANCED	TOOLS	STATUS	HELP
<ul style="list-style-type: none"> Admin Date and Time Log Settings System Firmware Firmware via USB System Check License 	<p>SNMP LOGOUT</p> <p>This page displays the current SNMP configuration of the router. The following MIB (Management Information Base) fields are displayed and can be modified here.</p> <p> <input type="button" value="Save Settings"/> <input type="button" value="Don't Save Settings"/> </p> <p>SNMP System Information</p> <p> SysContact: <input type="text"/> SysLocation: <input type="text"/> SysName: <input type="text" value="DWC-1000"/> </p>				<p>Helpful Hints...</p> <p>The router is identified by an SNMP manager via the System Information. The identifier settings The SysName set here is also used to identify the router for SysLog logging.</p> <p>More...</p>

WIRELESS CONTROLLER

Copyright © 2011 D-Link Corporation.

D-Link : Wireless Controller x
 192.168.0.10/platform.cgi?page=dateAndTime.htm

Product Page: DWC-1000 Hardware Version: A1 Firmware Version: 1.01B67_VW

D-Link

DWC-1000	SETUP	ADVANCED	TOOLS	STATUS	HELP
Admin	DATE AND TIME LOGOUT				Helpful Hints... If the router has access to the internet, the most accurate mechanism to set the router time is to enable NTP server communication. Otherwise use the router's RTC and configure the time and time zone manually. Accurate date and time on the router is critical for firewall schedules, Wi-Fi power saving support to disable APs at certain times of the day, and accurate logging. More...
Date and Time	This page allows us to set the date, time and NTP servers. Network Time Protocol (NTP) is a protocol that is used to synchronize computer clock time in a network of computers. Accurate time across a network is important for many reasons. <input type="button" value="Save Settings"/> <input type="button" value="Don't Save Settings"/>				
Log Settings	Date and Time Current Router Time: Mon Feb 7 18:09:37 GMT 2011 Time Zone: (GMT+10:00) Canberra Melbourne Sydney Enable Daylight Saving: <input type="checkbox"/> Configure NTP Servers: <input checked="" type="radio"/> Set Date and Time Manually: <input type="radio"/>				
System	NTP Servers Configuration Default NTP Server: <input checked="" type="radio"/> Custom NTP Server: <input type="radio"/> Primary NTP Server: 0.us.pool.ntp.org Secondary NTP Server: 1.us.pool.ntp.org Time to re-synchronize (in minutes): 120				
Firmware	Set Date And Time Year: 2011 / Month: 02 / Day: 07 - Hours: 18 : Min: 09 : Sec: 37				
Firmware via USB					
System Check					
License					

WIRELESS CONTROLLER

Copyright © 2011 D-Link Corporation.



DWC-1000	SETUP	ADVANCED	TOOLS	STATUS	HELP
----------	-------	----------	-------	--------	------

- Admin
- Date and Time
- Log Settings
- System
- Firmware
- Firmware via USB
- System Check
- License

LOGS FACILITY LOGOUT

Log Settings: Logs Facility

set the date and time for the router. User can use the automatic or manual date and his choice.

Logs Configuration

Remote Logging

Logs Facility

Facility:

Display and Send Logs

	Display in Event Log	Send to Syslog
Emergency:	<input type="checkbox"/>	<input type="checkbox"/>
Alert:	<input type="checkbox"/>	<input type="checkbox"/>
Critical:	<input type="checkbox"/>	<input type="checkbox"/>
Error:	<input type="checkbox"/>	<input type="checkbox"/>
Warning:	<input type="checkbox"/>	<input type="checkbox"/>
Notification:	<input type="checkbox"/>	<input type="checkbox"/>
Information:	<input type="checkbox"/>	<input type="checkbox"/>
Debugging:	<input type="checkbox"/>	<input type="checkbox"/>

Helpful Hints...

In order to configure a logging facility, first select the facility and then press 'Display' button.

[More...](#)

D-Link : Wireless Controller x
 192.168.0.10/platform.cgi?page=logs.htm

Product Page: DWC-1000 Hardware Version: A1 Firmware Version: 1.01B67_VW

D-Link

DWC-1000	SETUP	ADVANCED	TOOLS	STATUS	HELP
Admin	LOGS CONFIGURATION LOGOUT				Helpful Hints... Traffic through each network segment (LAN, Option, DMZ) can be tracked based on whether the packet was accepted or dropped by the firewall. Denial of service attacks, general attack information, login attempts, dropped packets, and similar events can be captured for review by the IT administrator. More...
Date and Time	This page allows user to configure system wide log settings.				
Log Settings	<input type="button" value="Save Settings"/> <input type="button" value="Don't Save Settings"/>				
System	Routing Logs				
Firmware		Accepted Packets		Dropped Packets	
Firmware via USB	LAN to Option:	<input type="checkbox"/>		<input type="checkbox"/>	
System Check	Option to LAN:	<input type="checkbox"/>		<input type="checkbox"/>	
License	System Logs				
	All Unicast Traffic:	<input type="checkbox"/>			
	All Broadcast / Multicast Traffic:	<input type="checkbox"/>			
	FTP Logs:	<input type="checkbox"/>			
	Redirected ICMP Packets:	<input type="checkbox"/>			
	Invalid Packets:	<input type="checkbox"/>			
	Other Events Logs				
	Bandwidth Limit:	<input type="checkbox"/>			

WIRELESS CONTROLLER

Copyright © 2011 D-Link Corporation.

- Firmware via USB
- System Check
- License

Log Options

Remote Log Identifier:

Enable E-Mail Logs

Enable E-Mail Logs:

E-Mail Server Address:

SMTP Port:

Return E-Mail Address:

Send to E-Mail Address(1):

Send to E-Mail Address(2): (Optional)

Send to E-Mail Address(3): (Optional)

Authentication with SMTP Server:

User Name:

Password:

Respond to Identd from SMTP Server:

Send E-mail logs by Schedule

Unit:

Day:

Time: (AM) (PM)

SYS LOG SERVER CONFIGURATION

	Name	SysLog Facility	SysLog Severity
<input type="checkbox"/>	SysLog Server1: <input type="text"/>	<input type="text" value="All"/>	<input type="text" value="All"/>
<input type="checkbox"/>	SysLog Server2: <input type="text"/>	<input type="text" value="All"/>	<input type="text" value="All"/>
<input type="checkbox"/>	SysLog Server3: <input type="text"/>	<input type="text" value="All"/>	<input type="text" value="All"/>
<input type="checkbox"/>	SysLog Server4: <input type="text"/>	<input type="text" value="All"/>	<input type="text" value="All"/>
<input type="checkbox"/>	SysLog Server5: <input type="text"/>	<input type="text" value="All"/>	<input type="text" value="All"/>
<input type="checkbox"/>	SysLog Server6: <input type="text"/>	<input type="text" value="All"/>	<input type="text" value="All"/>
<input type="checkbox"/>	SysLog Server7: <input type="text"/>	<input type="text" value="All"/>	<input type="text" value="All"/>
<input type="checkbox"/>	SysLog Server8: <input type="text"/>	<input type="text" value="All"/>	<input type="text" value="All"/>

message.
[More...](#)

D-Link : Wireless Controller x

192.168.0.10/platform.cgi?page=system.htm

Product Page: DWC-1000 Hardware Version: A1 Firmware Version: 1.01B67_WW

D-Link®

DWC-1000	SETUP	ADVANCED	TOOLS	STATUS	HELP
Admin					Helpful Hints... You can back up the router's custom configuration settings to restore them to a different device or the same router after some other changes. Be very careful when reverting to factory default settings, as you will lose the router's custom configuration after this operation. More...
Date and Time					
Log Settings					
System	SYSTEM LOGOUT This page allows user to do configuration related operations which includes backup, restore and factory default. This page also allows user to reboot the router.				
Firmware	Backup / Restore Settings				
Firmware via USB	Save Current Settings: <input type="button" value="Backup"/>				
System Check	Restore Saved Settings: <input type="button" value="Choose File"/> No file chosen				
License	Factory Default settings: <input type="button" value="Default"/>				
	Reboot: <input type="button" value="Reboot"/>				

WIRELESS CONTROLLER

Copyright © 2011 D-Link Corporation.

D-Link : Wireless Controller x

192.168.0.10/platform.cgi?page=firmware.htm

Product Page: DWC-1000 Hardware Version: A1 Firmware Version: 1.01B67_WW

D-Link®

DWC-1000	SETUP	ADVANCED	TOOLS	STATUS	HELP
Admin					Helpful Hints... The router's firmware can be upgraded here, and the current version is displayed on this page. Another useful feature is to check online for newer versions of firmware, which will update the status field. More...
Date and Time					
Log Settings					
System	FIRMWARE LOGOUT This page allows user to upgrade/downgrade the router firmware. This page also shows the information regarding firmware version and build time.				
Firmware	Firmware Information				
Firmware via USB	Firmware Version: 1.01B67_WW				
System Check	WLAN Module Version: 4.0.0.1				
License	Firmware Date: Fri Nov 25 16:31:49 2011				
	Firmware Upgrade				
	Locate & select the upgrade file: <input type="button" value="Choose File"/> No file chosen				
	<input type="button" value="Upgrade"/>				
	Firmware Upgrade Notification Options				
	Check Now: <input type="button" value="Check Now"/>				
	Status:				

WIRELESS CONTROLLER

Copyright © 2011 D-Link Corporation.

D-Link : Wireless Controller x
192.168.0.10/platform.cgi?page=onUsb.htm

Product Page: DWC-1000 Hardware Version: A1 Firmware Version: 1.01B67_WW

D-Link®

DWC-1000	SETUP	ADVANCED	TOOLS	STATUS	HELP
Admin					Helpful Hints... Make sure that USB storage key is connected to the router. You can check the device status on 'Setup -> USB Settings' page. Please unmount the device before removing it from the router. More...
Date and Time					
Log Settings	FIRMWARE & CONFIGURATION (USB) LOGOUT				
System	This page allows user to upgrade the firmware, backup and restore the settings using a USB storage key.				
Firmware	USB-1				
Firmware via USB	Please connect a USB storage key				
System Check	USB Drive Status: Not Connected				
License	Save a copy of current settings: <input type="button" value="Back Up"/>				
	Select the upgrade file from your hard disk:				
	<input type="text"/> <input type="button" value="Restore"/> <input type="button" value="Upload"/>				
	USB-2				
	Please connect a USB storage key				
	USB Drive Status: Not Connected				
	Save a copy of current settings: <input type="button" value="Back Up"/>				
	Select the upgrade file from your hard disk:				
	<input type="text"/> <input type="button" value="Restore"/> <input type="button" value="Upload"/>				

Product Page: DWC-1000 Hardware Version: A1 Firmware Version: 1.01B67_WW

D-Link

DWC-1000 //	SETUP	ADVANCED	TOOLS	STATUS	HELP
--------------------	--------------	-----------------	--------------	---------------	-------------

SYSTEM CHECK LOGOUT

This page can be used for diagnostics purpose. This page provides user with some diagnostic tools like ping, traceroute and packet sniffer.

Ping or Trace an IP Address

IP Address / Domain Name:

Perform a DNS Lookup

Internet Name:

Router Options

Display the IPv4 Routing Table:

Display the IPv6 Routing Table:

Capture Packets:

Helpful Hints...

The router has built in tools to allow an administrator to evaluate the communication status and overall network health. Ping and Trace Route are two of the most frequently used tools to evaluate internet speed and connectivity.

[More...](#)

WIRELESS CONTROLLER

Copyright © 2011 D-Link Corporation.

Product Page: DWC-1000 Hardware Version: A1 Firmware Version: 1.01B67_WW

D-Link

DWC-1000 //	SETUP	ADVANCED	TOOLS	STATUS	HELP
--------------------	--------------	-----------------	--------------	---------------	-------------

LICENSES LOGOUT

This page shows the list of activated licenses and also can be used for activating new DWC-1000-VPN and DWC-1000-AP6 licenses.

List of Available Licenses

#	Licence Model	Activation Code	Expires
License Activation			
Activation Code:		<input type="text"/>	
<input type="button" value="Activate"/>			

Helpful Hints...

There are mainly three things related to Licence. Licence Mode Activation Code Expires

[More...](#)

WIRELESS CONTROLLER

Copyright © 2011 D-Link Corporation.

D-Link : Wireless Controller x

192.168.0.10/platform.cgi?page=generalDashboard.htm

Product Page: DWC-1000 Hardware Version: A1 Firmware Version: 1.01B67_VW

D-Link®

DWC-1000	SETUP	ADVANCED	TOOLS	STATUS	HELP
Dashboard	General				Helpful Hints... The hardware resources (CPU and memory) are profiled here and packet traffic through the router is displayed for each interface. More...
Global Info	Interface			LOGOUT	
Device Info	Access Point	resources being used in the system currently. This page also shows the bandwidth			
Access Point Info	Client				
LAN Clients Info	Distributed Tunnel				
Wireless Client Info	CPU usage by user: 4 % CPU usage by kernel: 4 % CPU idle: 92 % CPU waiting for IO: 0 %				
Logs	Memory Utilization Total Memory: 247916 KB Used Memory: 207088 KB Free Memory: 40828 KB Cached Memory: 62092 KB Buffer Memory: 17292 KB				
Traffic Monitor					
Active Sessions					

WIRELESS CONTROLLER

Copyright © 2011 D-Link Corporation.

192.168.0.10/platform.cgi?page=generalDashboard.htm#

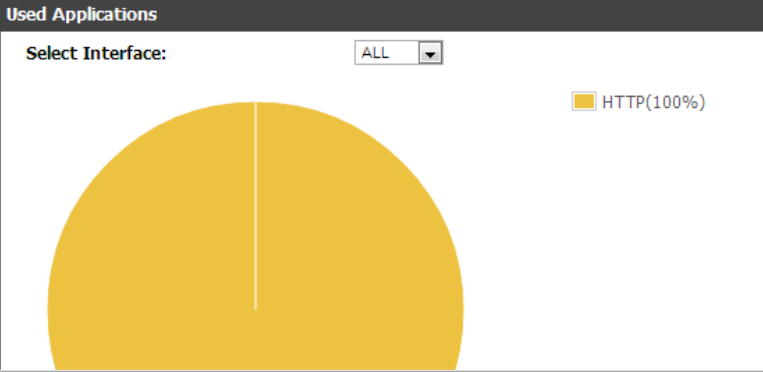
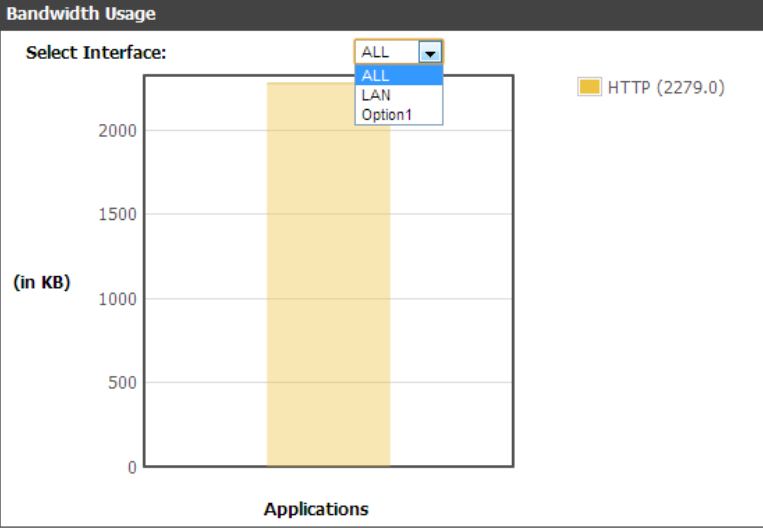


- Dashboard ▾
- Global Info ▾
- Device Info ▾
- Access Point Info ▾
- LAN Clients Info ▾
- Wireless Client Info ▾
- Logs ▾
- Traffic Monitor ▾
- Active Sessions

DASHBOARD LOGOUT

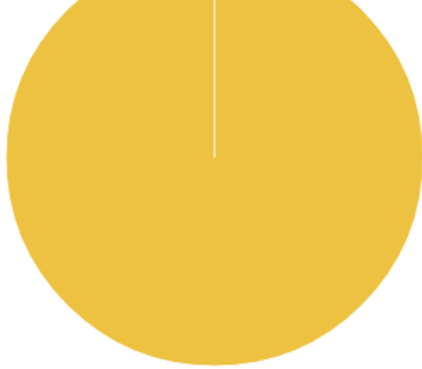
This page displays the resources being used in the system currently. This page also shows the bandwidth used in form of bar graphs.

Helpful Hints...
The hardware resources (CPU and memory) are profiled here and packet traffic through the router is displayed for each interface.
[More...](#)



D-Link : Wireless Controller x

192.168.0.10/platform.cgi?page=dashBoard.htm



Interface (LAN)

Incoming Packets: :	34613
Outgoing Packets:	31438
Dropped In Packets:	0
Dropped Out Packets:	0

Interface (Option)

Incoming Packets: :	0
Outgoing Packets:	29
Dropped In Packets:	0
Dropped Out Packets:	0

Interface (VLAN)

Port	Incoming Packets	Outgoing Packets	Dropped In Packets	Dropped Out Packets
LAN2	0	11	0	0

WLAN Statistics

Packets				Bytes			
Transmitted	Received	Transmit Dropped	Receive Dropped	Transmitted	Received	Transmit Dropped	Receive Dropped
27308	621	0	0	2785530	107827	0	0

Active Info

ICMP Received:	2584
Active VPN Tunnels:	0
Available VLANs:	2
Active Interfaces:	6

D-Link : Wireless Controller x

192.168.0.10/apDashboard.html

Global Info ▶
 Device Info ▶
 Access Point Info ▶
 LAN Clients Info ▶
 Wireless Client Info ▶
 Logs ▶
 Traffic Monitor ▶
 Active Sessions

ACCESS POINT LOGOUT

The Access Point Status page shows summary information about managed, failed, and rogue access points the controller has discovered or detected.

Total Access Points Utilization PIE CHART

Managed Access Points(100%)

Access Points Utilization & Total Access Points Utilization related information can be seen from this page.
[More...](#)

Total Access Points Utilization - Data

Total Access Points:	1
Managed Access Points:	1
Discovered Access Points:	0
Connection Failed Access Points:	0

Access Points Utilization

Standalone Access Points:	0
Rogue Access Points:	12
Authentication Failed Access Points:	0
Unknown Access Points:	21
Rogue AP Mitigation Limit:	16
Rogue AP Mitigation Count:	0
Maximum Managed APs in Peer Group:	96
WLAN Utilization:	27

D-Link : Wireless Controller x

192.168.0.10/clientDashBoard.html

Dashboard

Global Info

Device Info

Access Point Info

LAN Clients Info

Wireless Client Info

Logs

Traffic Monitor

Active Sessions

CLIENT STATISTICS [LOGOUT](#)

This page shows information about all the clients which are connected through our managed AP.

802.11 Clients BAR Graph

802.11a Clients :0
802.11b/g Clients :0
802.11n Clients :0

802.11 Clients - Data

802.11a Clients:	0
802.11b/g Clients:	0
802.11n Clients:	0

Clients - Data

Total Clients:	0
Authenticated Clients:	0
Maximum Associated Clients:	200
Detected Clients:	0
Maximum Detected Clients:	0
Maximum Pre-authentication History Entries:	1600
Total Pre-authentication History Entries:	0
Maximum Roam History Entries:	500
Total Roam History Entries:	0

Helpful Hints...

You can view a variety of information about the wireless clients that are associated with the APs the controller manages.

[More...](#)



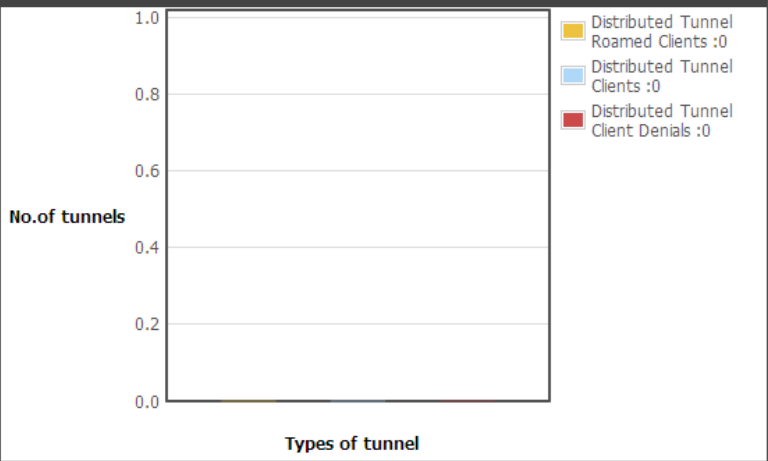
DWC-1000 // SETUP ADVANCED TOOLS STATUS HELP

- Dashboard ▾
- Global Info ▾
- Device Info ▾
- Access Point Info ▾
- LAN Clients Info ▾
- Wireless Client Info ▾
- Logs ▾
- Traffic Monitor ▾
- Active Sessions ▾

DISTRIBUTED TUNNELING STASTICS LOGOUT

This page shows information about all the distributed tunnel clients.

Distributed Tunnel - Bar Graph



Distributed Tunneling - Data

Distributed Tunnel Packets Transmitted:	0
Distributed Tunnel Roamed Clients:	0
Distributed Tunnel Clients:	0
Distributed Tunnel Client Denials:	0

Helpful Hints...
You can view a variety of information about the distributed tunnel clients.
[More...](#)

Product Page: DWC-1000 Hardware Version: A1 Firmware Version: 1.01B67_WW

D-Link®

DWC-1000	SETUP	ADVANCED	TOOLS	STATUS	HELP
Dashboard					Helpful Hints... The Unified Wireless Controller periodically collects information from the APs it manages and from associated peer controllers. More...
Global Info	Global Status				
Device Info	Peer Controller	Global page shows status and statistics about the Controller and all of the objects			
Access Point Info	IP Discovery				
LAN Clients Info	Config Receive Status				
Wireless Client Info	AP H/W Capability	Operational	Enabled		
Logs	Radius Statistics	IP Address: 192.168.0.10 Peer Controllers: 0			
Traffic Monitor					
Active Sessions					
Cluster					
Cluster Controller:		Yes			
Cluster Controller IP Address:		192.168.0.10			
Access Points					
Total Access Points:		1			
Managed Access Points:		1			
Standalone Access Points:		0			
Rogue Access Points:		12			
Discovered Access Points:		0			
Connection Failed Access Points:		0			
Authentication Failed Access Points:		0			
Unknown Access Points:		21			
Rogue AP Mitigation Limit:		16			
Rogue AP Mitigation Count:		0			
Maximum Managed APs in Peer Group:		96			
WLAN Utilization:		22 %			

192.168.0.10/wireless_status.html#

D-Link : Wireless Controller x

192.168.0.10/wireless_status.html

Unknown Access Points: 21

Rogue AP Mitigation Limit: 16

Rogue AP Mitigation Count: 0

Maximum Managed APs in Peer Group: 96

WLAN Utilization: 22 %

Clients

Total Clients: 0

Authenticated Clients: 0

802.11a Clients: 0

802.11b/g Clients: 0

802.11n Clients: 0

Maximum Associated Clients: 200

Detected Clients: 103

Maximum Detected Clients: 400

Maximum Pre-authentication History Entries: 500

Total Pre-authentication History Entries: 0

Maximum Roam History Entries: 500

Total Roam History Entries: 0

WLAN Statistics

Packets				Bytes			
Transmitted	Received	Transmit Dropped	Receive Dropped	Transmitted	Received	Transmit Dropped	Receive Dropped
27686	621	0	0	2819612	107827	0	0

Distributed Tunneling

Distributed Tunnel Packets Transmitted: 0

Distributed Tunnel Roamed Clients: 0

Distributed Tunnel Clients: 0

Distributed Tunnel Client Denials: 0

Refresh Clear Status

WIRELESS CONTROLLER

Product Page: DWC-1000 Hardware Version: A1 Firmware Version: 1.01B67_WW

D-Link®

DWC-1000	SETUP	ADVANCED	TOOLS	STATUS	HELP
Dashboard					Helpful Hints... The Unified Wireless Controller periodically collects information from the APs it manages and from associated peer controllers. More...
Global Info	Global Status	LOGOUT statistics about the Controller and all of the objects			
Device Info	Peer Controller	Status			
Access Point Info	IP Discovery	Configuration			
LAN Clients Info	Config Receive Status	Managed AP			
Wireless Client Info	AP H/W Capability	Operational	Enabled		
Logs	Radius Statistics	IP Address:	192.168.0.10		
Traffic Monitor	Peer Controllers:		0		
Active Sessions	Cluster Cluster Controller: Yes Cluster Controller IP Address: 192.168.0.10				
Access Points Total Access Points: 1 Managed Access Points: 1 Standalone Access Points: 0 Rogue Access Points: 12 Discovered Access Points: 0 Connection Failed Access Points: 0 Authentication Failed Access Points: 0 Unknown Access Points: 21 Rogue AP Mitigation Limit: 16 Rogue AP Mitigation Count: 0 Maximum Managed APs in Peer Group: 96 WLAN Utilization: 22 %					

192.168.0.10/wireless_status.html#

D-Link : Wireless Controller x

192.168.0.10/peer_ws_status.html

Product Page: DWC-1000 Hardware Version: A1 Firmware Version: 1.01B67_VW

D-Link

DWC-1000	SETUP	ADVANCED	TOOLS	STATUS	HELP
<ul style="list-style-type: none"> Dashboard Global Info Device Info Access Point Info LAN Clients Info Wireless Client Info Logs Traffic Monitor Active Sessions 	<h2>PEER CONTROLLER STATUS</h2> <p>LOGOUT</p> <p>The Peer Controller Status page provides information about other Unified Wireless Controllers in the network. Peer wireless Controllers within the same cluster exchange data about themselves, their managed APs, and clients. The Controller maintains a database with this data so you can view information about a peer, such as its IP address and software version. If the Controller loses contact with a peer, all of the data for that peer is deleted.</p> <h3>Peer Controller Status</h3> <p>No data available for peer switch status.</p> <p>Refresh</p>			<h3>Helpful Hints...</h3> <p>One Controller in a cluster is elected as a Cluster Controller. The Cluster Controller collects status and statistics from all the other controllers in the cluster, including information about the APs peer Controller manage and the clients associated to those APs.</p> <p>More...</p>	

WIRELESS CONTROLLER

Copyright © 2011 D-Link Corporation.

D-Link : Wireless Controller x

192.168.0.10/peer_managed_ap_status.html

Product Page: DWC-1000 Hardware Version: A1 Firmware Version: 1.01B67_VW

D-Link

DWC-1000	SETUP	ADVANCED	TOOLS	STATUS	HELP
<ul style="list-style-type: none"> Dashboard Global Info Device Info Access Point Info LAN Clients Info Wireless Client Info Logs Traffic Monitor Active Sessions 	<h2>PEER CONTROLLER MANAGED AP STATUS</h2> <p>LOGOUT</p> <p>The Peer Controller Managed AP Status page displays information about the APs that each peer Controller in the cluster manages.</p> <h3>Controller</h3> <p>No data available for peer switch status.</p> <p>Refresh</p>			<h3>Helpful Hints...</h3> <p>Use the menu above the table to select the peer Controller with the AP information to display. Each peer Controller is identified by its IP address.</p> <p>More...</p>	

WIRELESS CONTROLLER

Copyright © 2011 D-Link Corporation.

Product Page: DWC-1000 Hardware Version: A1 Firmware Version: 1.01B67_VW

D-Link

DWC-1000 // SETUP ADVANCED TOOLS STATUS HELP

Dashboard Global Info Device Info Access Point Info LAN Clients Info Wireless Client Info Logs Traffic Monitor Active Sessions

IP DISCOVERY LOGOUT

The IP Discovery Status page shows information about communication with the devices in the IP discovery list on the Set up > AP Management > Poll List page.

Ip Discovery

IP Address	Status
192.168.0.10	Polled
192.168.0.11	Not Polled
192.168.0.12	Polled
192.168.0.13	Polled
192.168.0.14	Polled
192.168.0.15	Polled

[Refresh](#)

Helpful Hints...
The IP Discovery list can contain the IP addresses of peer Controllers and APs for the UWC to discover and associate with as part of the WLAN.
[More...](#)

WIRELESS CONTROLLER

Copyright © 2011 D-Link Corporation.

Product Page: DWC-1000 Hardware Version: A1 Firmware Version: 1.01B67_VW

D-Link

DWC-1000 // SETUP ADVANCED TOOLS STATUS HELP

Dashboard Global Info Device Info Access Point Info LAN Clients Info Wireless Client Info Logs Traffic Monitor Active Sessions

CONFIGURATION RECEIVE STATUS LOGOUT

The Peer Controller Configuration Received Status page provides information about the configuration a controller has received from one of its peers.

Current Receive Status

Current Receive Status	Not Started
-------------------------------	-------------

Last Configuration Received

Peer Controller IP Address:	0.0.0.0
Configuration:	None
Timestamp:	Jan 1 00:00:00 1970

Helpful Hints...
The Peer controller Configuration feature allows you to send the critical wireless configuration from one controller to all other controllers. In addition to keeping the controllers synchronized, this function enables the administrator to manage all wireless controllers in the cluster from one controller.
[More...](#)

WIRELESS CONTROLLER

Copyright © 2011 D-Link Corporation.

Product Page: DWC-1000 Hardware Version: A1 Firmware Version: 1.01B67_VW

D-Link

DWC-1000 // SETUP ADVANCED TOOLS STATUS HELP

- Dashboard
- Global Info
- Device Info
- Access Point Info
- LAN Clients Info
- Wireless Client Info
- Logs
- Traffic Monitor
- Active Sessions

AP HARDWARE CAPABILITY LOGOUT

From the AP Hardware Capability page, you can access summary information about the AP Hardware support, the radios and IEEE modes supported by the hardware, and the software images that are available for download to the APs.

List of Hardware Capabilities Supported by APs

Hardware Type	Hardware Type Description	Radio Count	Image Type
	DWL-8600AP Dual Radio a/b/g/n		

Helpful Hints...
The controller can support APs that have different hardware capabilities, such as the supported number of radios, the supported IEEE 802.11 modes, and the software image required by the AP.
[More...](#)

WIRELESS CONTROLLER

Copyright © 2011 D-Link Corporation.

Product Page: DWC-1000 Hardware Version: A1 Firmware Version: 1.01B67_VW

D-Link

DWC-1000 // SETUP ADVANCED TOOLS STATUS HELP

- Dashboard
- Global Info
 - Global Status
- Device Info
 - Peer Controller
- Access Point Info
 - IP Discovery
- LAN Clients Info
 - Config Receive Status
- Wireless Client Info
 - AP H/W Capability
- Logs
 - Radius Statistics
 - Server Statistics
 - Named Server Status
- Traffic Monitor
- Active Sessions

AP HARDWARE CAPABILITY LOGOUT

From the AP Hardware Capability page, you can access summary information about the AP Hardware support, the radios and IEEE modes supported by the hardware, and the software images that are available for download to the APs.

List of Hardware Capabilities Supported by APs

Hardware Type	Hardware Type Description	Radio Count	Image Type
	Server Statistics a/b/g/n		

Helpful Hints...
The controller can support APs that have different hardware capabilities, such as the supported number of radios, the supported IEEE 802.11 modes, and the software image required by the AP.
[More...](#)

WIRELESS CONTROLLER

Copyright © 2011 D-Link Corporation.

192.168.0.10/APHardwareCapability.html#

Product Page: DWC-1000 Hardware Version: A1 Firmware Version: 1.01B67_WW

D-Link

DWC-1000 // SETUP ADVANCED TOOLS STATUS HELP

Dashboard Global Info Device Info Access Point Info LAN Clients Info Wireless Client Info Logs Traffic Monitor Active Sessions

RADIUS SERVER STATUS LOGOUT

Description goes here...

Radius Named Server Status

Current	RADIUS Server IP Address	RADIUS Server Name	Port Number	Server Type	Secret Configured	Message Authenticator
No configured RADIUS named servers exist.						

Helpful Hints...
Hint text goes here...
[More...](#)

WIRELESS CONTROLLER

Copyright © 2011 D-Link Corporation.

Product Page: DWC-1000 Hardware Version: A1 Firmware Version: 1.01B67_WW

D-Link

DWC-1000 // SETUP ADVANCED TOOLS STATUS HELP

Dashboard Global Info Device Info Access Point Info LAN Clients Info Wireless Client Info Logs Traffic Monitor Active Sessions

DEVICE STATUS LOGOUT

Device Status current settings and displays a snapshot of the system information.

Cluster Information	DWC-1000
Firmware Version:	1.01B67_WW
WLAN Module Version:	4.0.0.1
Serial Number:	qbe61bc000001

Option Information

MAC Address:	B8:A3:86:7B:AC:87
IPv4 Address:	0.0.0.0 / 255.255.255.0
IPv6 Address:	
Option State:	DOWN
NAT (IPv4 only):	Disabled
IPv4 Connection Type:	Dynamic IP (DHCP)
IPv6 Connection Type:	IPv6 is disabled
IPv6 Status:	Not Yet Connected

Helpful Hints...
All of your Internet and network connection details are displayed on the Device Status page. The firmware version and hardware serial number is also displayed here.
[More...](#)

192.168.0.10/platform.cgi?page=deviceStatus.htm#

D-Link : Wireless Controller x

192.168.0.10/platform.cgi?page=deviceStatus.htm

MAC Address: B8:A3:86:7B:AC:87
IPv4 Address: 0.0.0.0 / 255.255.255.0
IPv6 Address:
Option State: DOWN
NAT (IPv4 only): Disabled
IPv4 Connection Type: Dynamic IP (DHCP)
IPv6 Connection Type: IPv6 is disabled
IPv4 Connection State: Not Yet Connected
IPv6 Connection State: IPv6 is disabled
Link State: LINK DOWN
Option Mode: Use only single Option port: Option1
Gateway: 0.0.0.0
Primary DNS: 0.0.0.0
Secondary DNS: 0.0.0.0
Primary DNS(IPv6):
Secondary DNS(IPv6):

LAN Information

MAC Address: B8:A3:86:7B:AC:86
IP Address: 192.168.0.10 / 255.255.255.0
IPv6 Address:
DHCP Server: Enabled
DHCP Relay: Disabled

D-Link : Wireless Controller x

192.168.0.10/managed_ap_status.html

Product Page: DWC-1000 Hardware Version: A1 Firmware Version: 1.01B67_WW

D-Link

DWC-1000 // **SETUP** **ADVANCED** **TOOLS** **STATUS** **HELP**

Dashboard ▶
 Global Info ▶
 Device Info ▶
 Access Point Info ▶
 LAN Clients Info ▶
 Wireless Client Info ▶
 Logs ▶
 Traffic Monitor ▶
 Active Sessions ▶

MANAGED AP STATUS [LOGOUT](#)

Show all the details of managed AP.

List of Managed APs

	MAC Address (*) Peer Managed	IP Address	Age	Status	Profile	Radio Interface
<input type="checkbox"/>	fc:75:16:76:11:40	192.168.0.11	0d:00:00:00	Managed	1-Default	1-802.11a/n, 2-802.11b/g/n

[View AP Details](#) [View Radio Details](#) [View Neighbor APs](#)
[View Neighbor Clients](#) [View VAP Details](#) [View Distributed Tunneling Details](#)
[Delete](#) [Delete All](#) [Refresh](#)

Helpful Hints...
 We can see all the details related to a managed AP here. We can perform action like reset, disassociate clients connected with selected AP.
[More...](#)

WIRELESS CONTROLLER

Copyright © 2011 D-Link Corporation.

View Neighbour APs:



DWC-1000 // SETUP ADVANCED TOOLS STATUS HELP

- Dashboard
- Global Info
- Device Info
- Access Point Info
- LAN Clients Info
- Wireless Client Info
- Logs
- Traffic Monitor
- Active Sessions

MANAGED AP STATUS LOGOUT

Access points can store the neighbor information for up to 64 neighbor APs. If the neighbor scan information exceeds the capacity, the oldest data in the neighbor list is overwritten.

General

MAC Address: fc:75:16:76:11:40

Radio Mode: 1-Sentry 2-802.11b/g/n

List of Managed Access Point's Neighbor APs

	Neighbor AP MAC	SSID	RSSI	Status	Age
<input type="checkbox"/>	1c:af:f7:20:f5:80	Mamre Anglican School	18	Unknown	0d:00:00:21
<input type="checkbox"/>	1c:af:f7:20:f5:81		18	Unknown	0d:00:00:21
<input type="checkbox"/>	1c:af:f7:20:f5:82		18	Unknown	0d:00:00:21
<input type="checkbox"/>	1c:af:f7:20:f5:83		19	Unknown	0d:00:00:21
<input type="checkbox"/>	1c:af:f7:95:0e:e8	D-Link_OFFICE	15	Unknown	0d:00:00:21
<input type="checkbox"/>	1c:af:f7:95:0e:e9	D-Link_GUEST	14	Unknown	0d:00:00:21
<input type="checkbox"/>	1c:bd:b9:c4:ea:80	Mamre Anglican School	16	Unknown	0d:00:00:21
<input type="checkbox"/>	1c:bd:b9:c4:ea:81		16	Unknown	0d:00:00:21
<input type="checkbox"/>	1c:bd:b9:c4:ea:82		16	Unknown	0d:00:00:21
<input type="checkbox"/>	1c:bd:b9:c4:ea:83		16	Unknown	0d:00:00:21
<input type="checkbox"/>	d0:c2:82:7e:e0:af	MACQPARK DATA	46	Unknown	0d:00:45:58

Delete All Neighbors View Details

Helpful Hints...

The AP is identified by its MAC address and location. If the AP has two radios, select a radio to view the neighbor APs detected by using an RF scan on that radio. The radio is identified by its number and configured mode. If the radio is disabled, the radio mode will be displayed as Off.

[More...](#)

D-Link : Wireless Controller x

192.168.0.10/client_status.html

Product Page: DWC-1000 Hardware Version: A1 Firmware Version: 1.01B67_VW

D-Link®

DWC-1000	SETUP	ADVANCED	TOOLS	STATUS	HELP
Dashboard	ASSOCIATED CLIENTS STATUS LOGOUT				Helpful Hints... Since the associated client database supports roaming across APs, an entry is not removed when a client disassociates from a specific AP. After a client has disassociated, the entry is deleted after the client times out. More...
Global Info	You can view a variety of information about the wireless clients that are associated with the APs the controller manages.				
Device Info	List of Associated Clients				
Access Point Info	Associated Clients				
LAN Clients Info	No associated clients.				
Wireless Client Info	<input type="button" value="Refresh"/>				
Logs	Ad Hoc Clients				
Traffic Monitor	Detected Clients				
Active Sessions	Pre-Auth History				
	Roam History				

WIRELESS CONTROLLER

Copyright © 2011 D-Link Corporation.

192.168.0.10/client_status.html#

D-Link : Wireless Controller x
192.168.0.10/platform.cgi?page=viewLogs.htm

Product Page: DWC-1000 Hardware Version: A1 Firmware Version: 1.01B67_VW

D-Link

DWC-1000	SETUP	ADVANCED	TOOLS	STATUS	HELP			
Dashboard	VIEW ALL LOGS LOGOUT				Helpful Hints... This page displays the captured log messages of the router activities. The logs displayed on this event viewer can be defined in the Log Configuration page of the Log Settings menu. More...			
Global Info	All your system log will be shown here.							
Device Info	Display Logs							
Access Point Info	<div style="border: 1px solid #ccc; height: 150px; width: 100%;"></div>							
LAN Clients Info								
Wireless Client Info								
Logs						View All Logs		
Traffic Monitor								
Active Sessions	<input type="button" value="Refresh Logs"/> <input type="button" value="Clear Logs"/> <input type="button" value="Send Logs"/>							

WIRELESS CONTROLLER

Copyright © 2011 D-Link Corporation.

192.168.0.10/platform.cgi?page=viewLogs.htm#



DWC-1000	SETUP	ADVANCED	TOOLS	STATUS	HELP
----------	-------	----------	-------	--------	------

- Dashboard
- Global Info
- Device Info
- Access Point Info
- LAN Clients Info
- Wireless Client Info
- Logs
- Traffic Monitor
- Active Sessions
- Associated Clients Statistics

The page will auto-refresh in 4 seconds

DEVICE STATISTICS LOGOUT

This page shows the Rx/Tx packet and byte count for all the system interfaces. It also shows the up time for all the interfaces.

System up Time : 0 days, 2 hours, 16 minutes, 5 seconds

Port Statistics

Port	Tx Pkts	Rx Pkts	Collisions	Tx B/s	Rx B/s	Up time
Option1	31	0	0	0	0	Not Yet Available
Option2	73	0	0	0	0	Not Yet Available
Managed AP Statistics	33755	36925	0	0	0	0 Days 01:49:35
Associated Clients Statistics	11	0	0	0	0	Not Yet Available

Refresh interval: (Seconds)

Helpful Hints...
 Use this page to check the wired interface statistics of your router. This covers the LAN, VLAN, Option1, and configurable port (Option or DMZ) ports of the router.

[More...](#)

WIRELESS CONTROLLER

D-Link : Wireless Controller x

192.168.0.10/platform.cgi?page=deviceStatistics.htm

Product Page: DWC-1000 Hardware Version: A1 Firmware Version: 1.01B67_VW

D-Link

DWC-1000 // SETUP ADVANCED TOOLS STATUS HELP

Dashboard ▸

Global Info ▸

Device Info ▸

Access Point Info ▸

LAN Clients Info ▸

Wireless Client Info ▸

Logs ▸

Traffic Monitor ▸

Active Sessions

The page will auto-refresh in 1 seconds

DEVICE STATISTICS [LOGOUT](#)

This page shows the Rx/Tx packet and byte count for all the system interfaces. It also shows the up time for all the interfaces.

System up Time : 0 days, 2 hours, 16 minutes, 5 seconds

Port Statistics

Port	Tx Pkts	Rx Pkts	Collisions	Tx B/s	Rx B/s	Up time
Option1	31	0	0	0	0	Not Yet Available
Configurable Port (Option)	73	0	0	0	0	Not Yet Available
LAN	33755	36925	0	0	0	0 Days 01:49:35
LAN2	11	0	0	0	0	Not Yet Available

Poll Interval: (Seconds)

Helpful Hints...
Use this page to check the wired interface statistics of your router. This covers the LAN, VLAN, Option1, and configurable port (Option or DMZ) ports of the router.
[More...](#)

WIRELESS CONTROLLER

Copyright © 2011 D-Link Corporation.

Waiting for 192.168.0.10...

D-Link : Wireless Controller x

192.168.0.10/managed_ap_statistics.html

Product Page: DWC-1000 Hardware Version: A1 Firmware Version: 1.01B67_WW

D-Link®

DWC-1000 // SETUP ADVANCED TOOLS STATUS HELP

Dashboard Global Info Device Info Access Point Info LAN Clients Info Wireless Client Info Logs Traffic Monitor Active Sessions

MANAGED AP STATISTICS LOGOUT

The managed AP statistics page shows information about traffic on the wired and wireless interfaces of the access point. This information can help diagnose network issues, such as throughput problems.

Managed Access Point Statistics

	MAC Address	Interface	Packets		Bytes	
			Transmitted	Received	Transmitted	Received
<input type="checkbox"/>	fc:75:16:76:11:40	WLAN	28886	621	2928292	107827
		Ethernet	3605	38707	1814960	4583170

View Details View Radio Details View VAP Details View Distributed Tunneling D Refresh

Helpful Hints... click on the box left to the MAC Address of the AP to view detailed statistics about the AP. More...

WIRELESS CONTROLLER

Copyright © 2011 D-Link Corporation.

D-Link : Wireless Controller x

192.168.0.10/managed_ap_statistics.html

Product Page: DWC-1000 Hardware Version: A1 Firmware Version: 1.01B67_WW

D-Link®

DWC-1000 // SETUP ADVANCED TOOLS STATUS HELP

Dashboard Global Info Device Info Access Point Info LAN Clients Info Wireless Client Info Logs Traffic Monitor Active Sessions

MANAGED AP STATISTICS LOGOUT

The managed AP statistics page shows information about traffic on the wired and wireless interfaces of the access point. This information can help diagnose network issues, such as throughput problems.

Managed Access Point Statistics

	MAC Address	Interface	Packets		Bytes	
			Transmitted	Received	Transmitted	Received
<input type="checkbox"/>	fc:75:16:76:11:40	WLAN	28886	621	2928292	107827
		Ethernet	3605	38707	1814960	4583170

View Details View Radio Details View VAP Details View Distributed Tunneling D Refresh

Helpful Hints... click on the box left to the MAC Address of the AP to view detailed statistics about the AP. More...

WIRELESS CONTROLLER

Copyright © 2011 D-Link Corporation.

192.168.0.10/managed_ap_statistics.html#

D-Link : Wireless Controller x

192.168.0.10/platform.cgi?page=activeSessions.htm

Product Page: DWC-1000 Hardware Version: A1 Firmware Version: 1.01B67_VW

D-Link®

DWC-1000	SETUP	ADVANCED	TOOLS	STATUS	HELP
Dashboard	ACTIVE SESSIONS LOGOUT				Helpful Hints... Use this page to monitor the sessions that are active on your router. More...
Global Info	This page displays a list of active sessions on your router.				
Device Info	Active Sessions				
Access Point Info	Local	Internet	Protocol	State	
LAN Clients Info	<input type="button" value="Refresh"/>				
Wireless Client Info					
Logs					
Traffic Monitor					
Active Sessions					

WIRELESS CONTROLLER

Copyright © 2011 D-Link Corporation.