

DWL-1500

DWL-1500 comes with:

- Power Adapter (15V 1A DC)
- Power over Ethernet unit
- USB cable
- Ethernet cable
- Two antennas
- CD
- Quick Installation guide

Power can be delivered either via Power Adapter or via Power over Ethernet unit.

Indicators on the front panel:

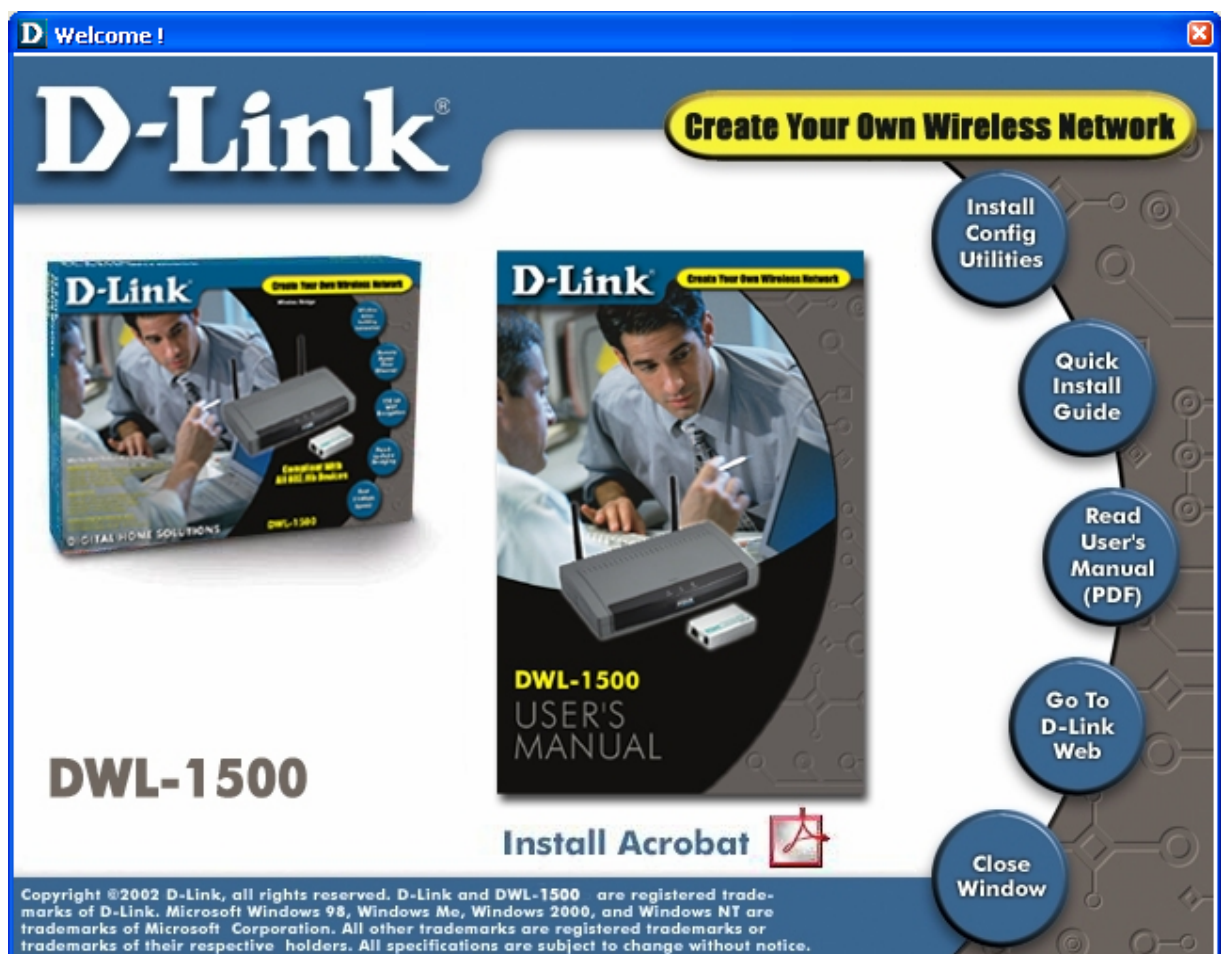
POWER LAN WLAN

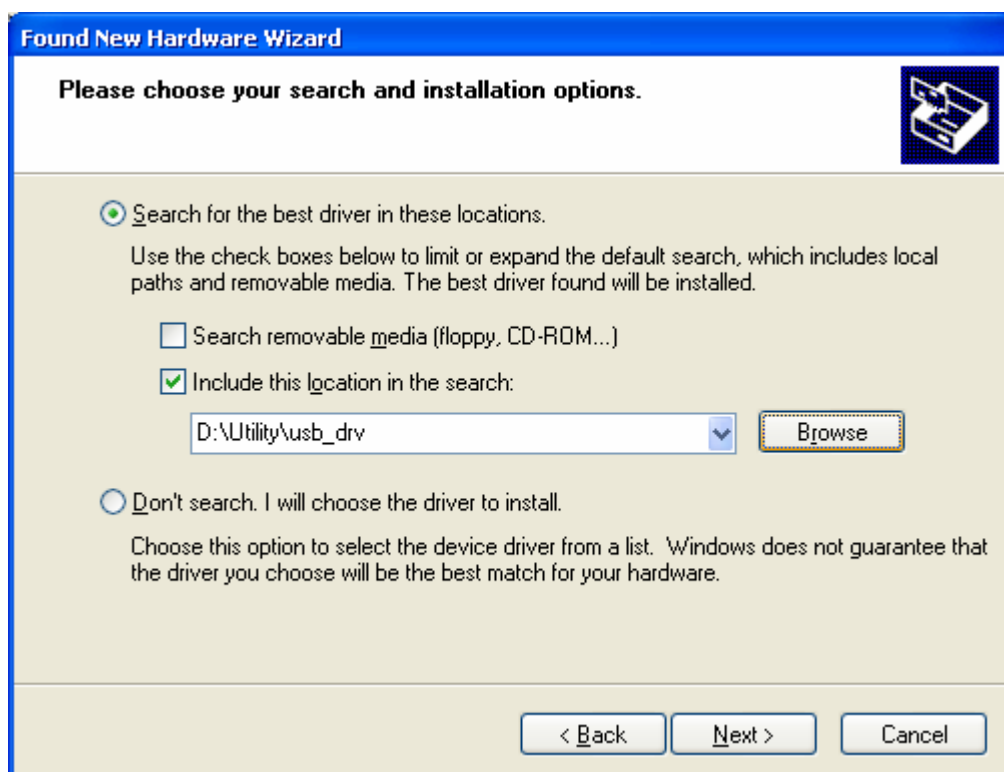
Back panel:

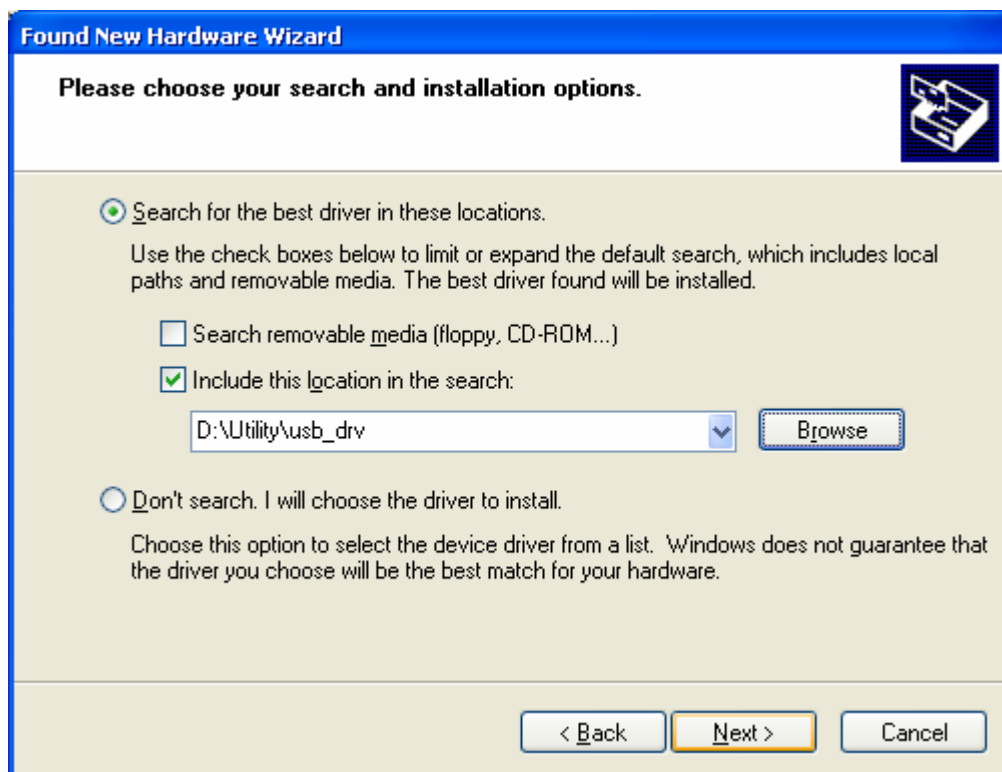
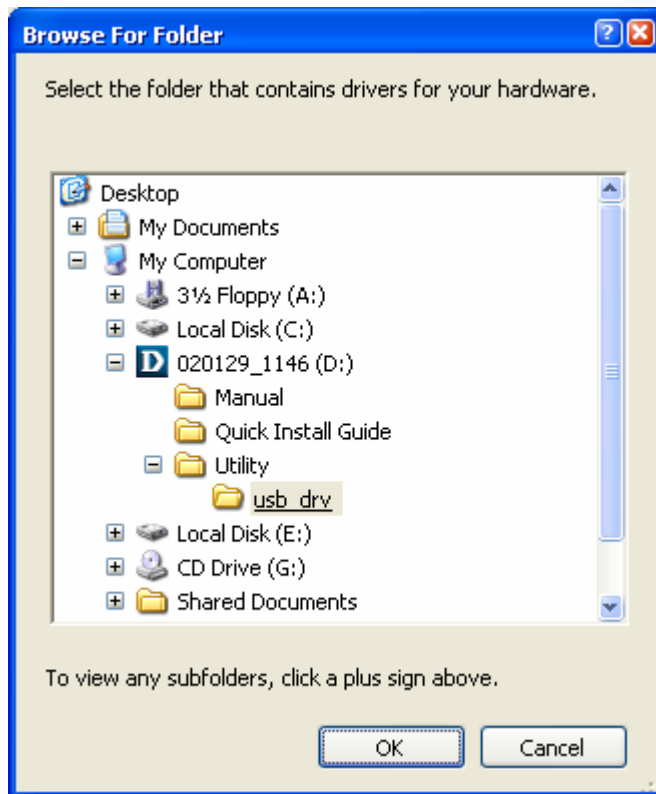
Antenna USB Ethernet/power Power switch Antenna Power in

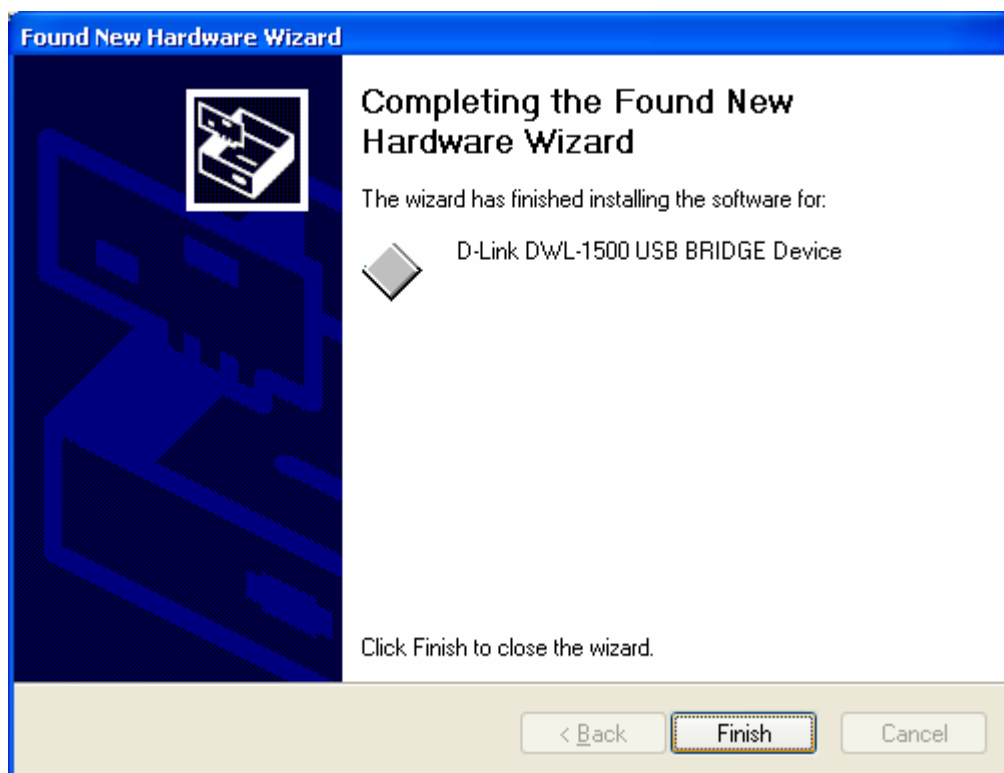
Configuration can be done via USB Config Utility (requires USB connection) or SNMP Utility (through the network).

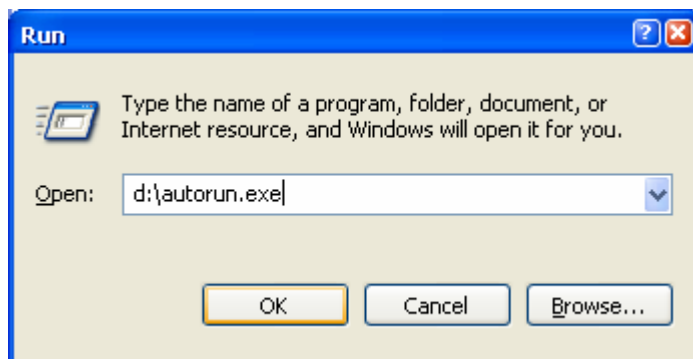
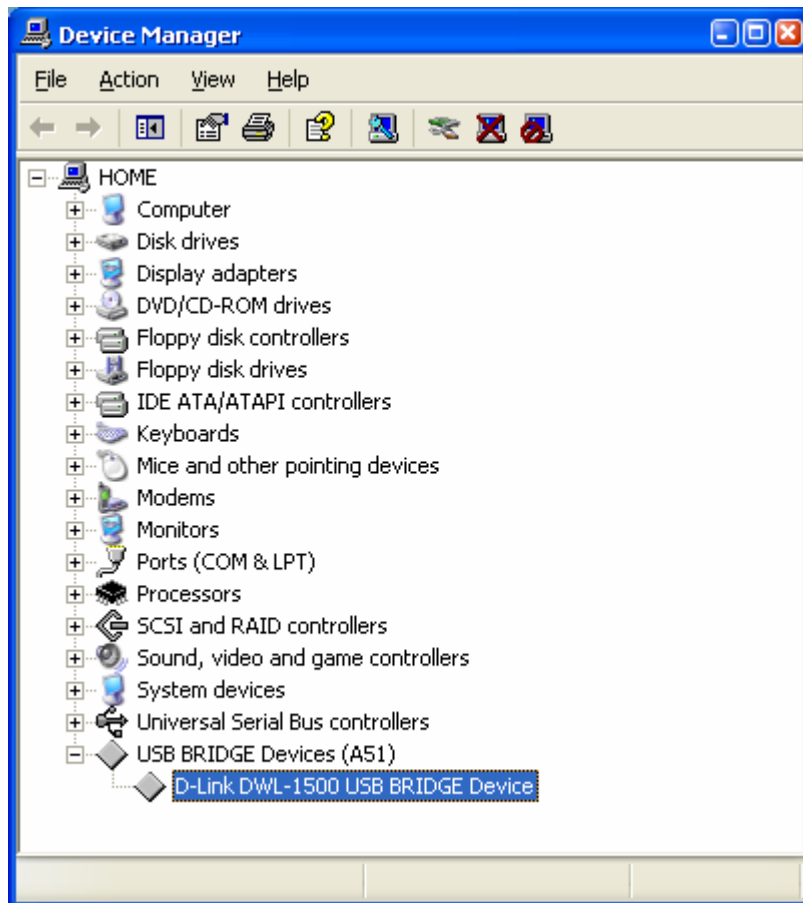
USB drivers should be installed first.

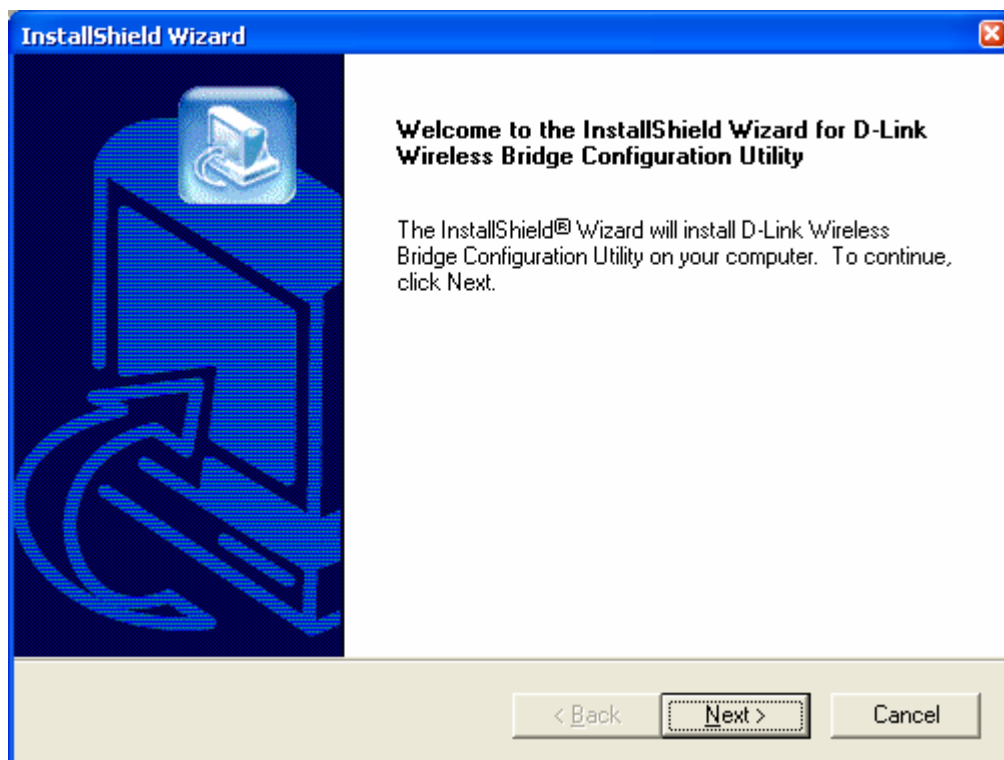














InstallShield Wizard 

Customer Information 


Please enter your information.


Please enter your name and the name of the company for whom you work.

User Name:

Company Name:

InstallShield

InstallShield Wizard 

Choose Destination Location 

Select folder where Setup will install files.

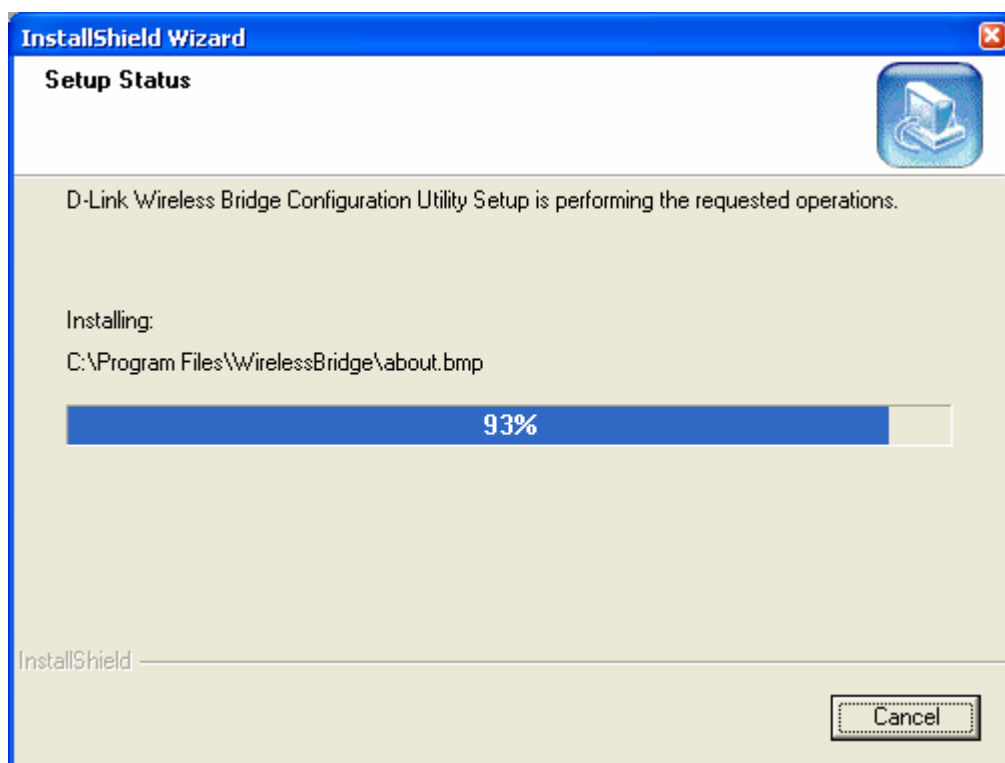
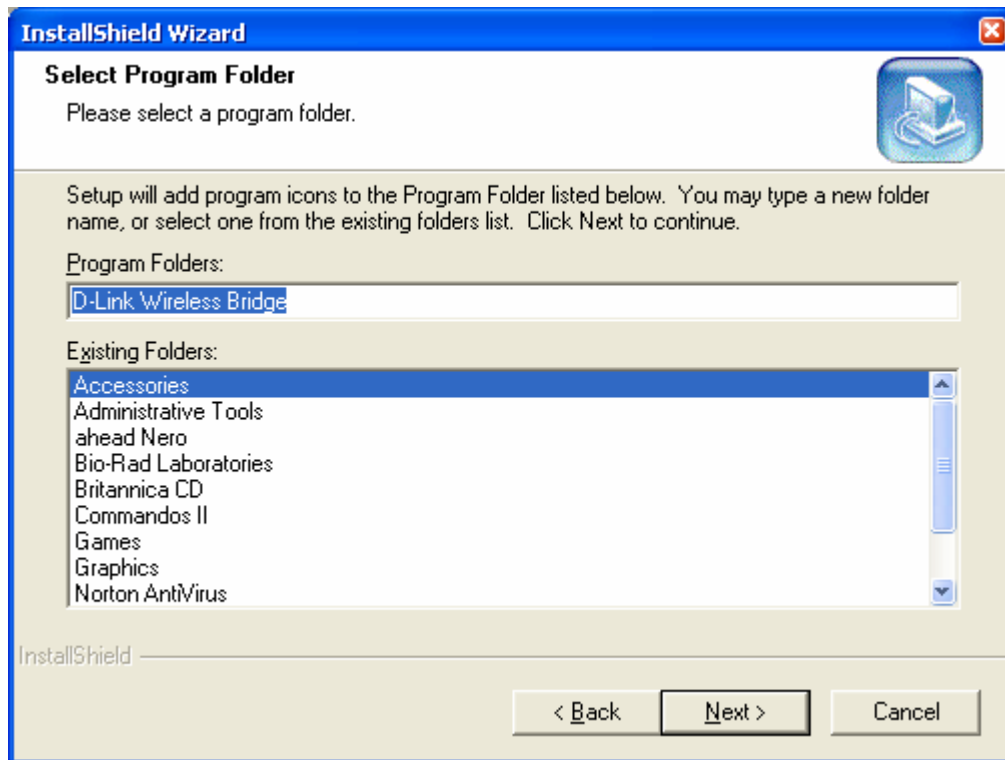
Setup will install D-Link Wireless Bridge Configuration Utility in the following folder.

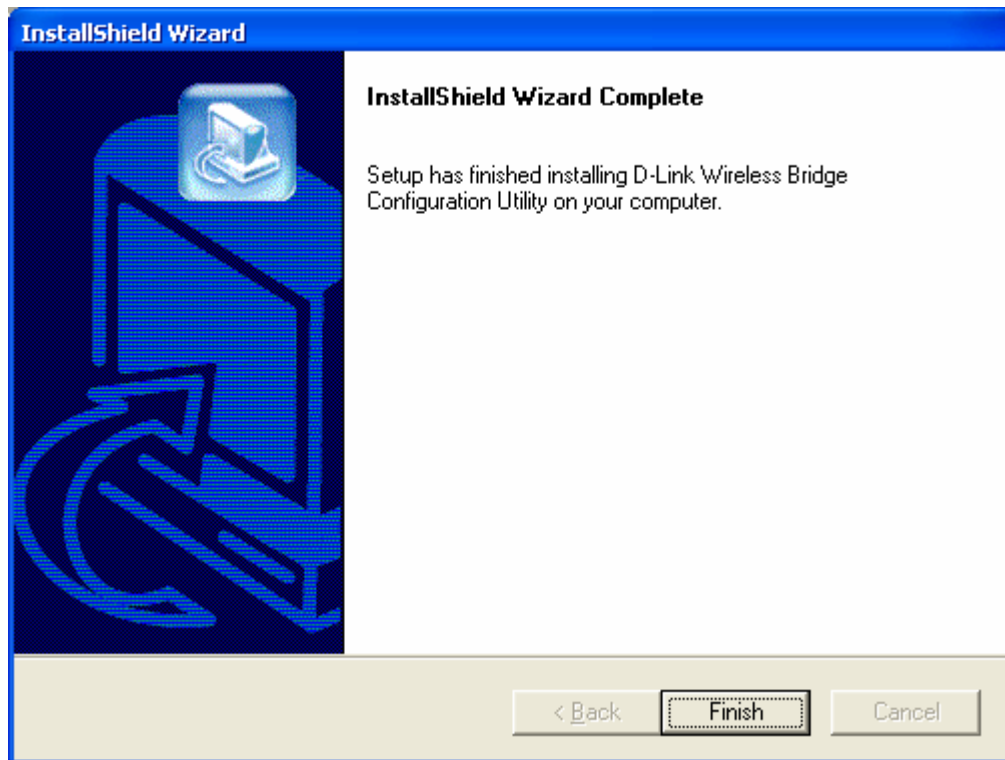
To install to this folder, click Next. To install to a different folder, click Browse and select another folder.

Destination Folder

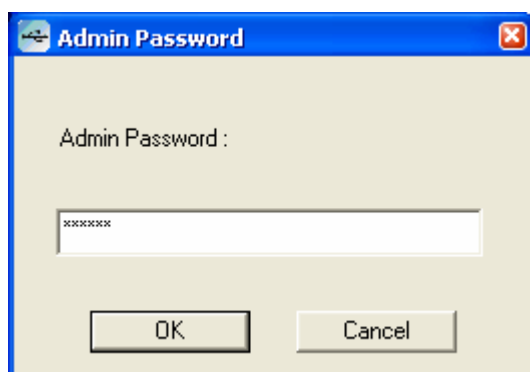
C:\Program Files\WirelessBridge

InstallShield





Run the USB Utility:



Default password is "public"

USB Configuration Utility

System | **Wireless Setting** | IP Config | Encryption | About

Firemwre Version : Version 1.4g.7

Regulation Domain : ETSI

MAC Address : 00-05-5D-ED-65-47

OK Cancel Apply

USB Configuration Utility

System | **Wireless Setting** | IP Config | Encryption | About

Access Point Name : NONE

Wireless ESSID : default

Operational Rate Set : Auto

Wireless Channel : Channel 6

Operational Mode : Access Point

Preferred BSSID :

- WBridge Point to MultiPoint
- Access Point**
- Access Point Client
- WBridge Point to Point

Advanced...

OK Cancel Apply

Advanced Wireless Setting

Fragmentation Threshold : (256 - 2346)

RTS Threshold : (128 - 2346)

Beacon Period : (20 - 1000)

Preamble :

OK Cancel

USB Configuration Utility

System | **Wireless Setting** | IP Config | Encryption | About

IP Address :

Subnet mask :

Gateway :

DHCP Client :

Primary Port :

OK Cancel Apply

USB Configuration Utility

System | Wireless Setting | IP Config | Encryption | About

WEP Type : Active Key ID :

Authentication Type :

64 bit

Key1	10	11	12	13	14	Key3	30	31	32	33	34
Key2	20	21	22	23	24	Key4	40	41	42	43	44

128 bit

Key1	10	11	12	13	14	00	00	00	00	00	00	00	00
Key2	20	21	22	23	24	00	00	00	00	00	00	00	00
Key3	30	31	32	33	34	00	00	00	00	00	00	00	00
Key4	40	41	42	43	44	00	00	00	00	00	00	00	00

OK Cancel Apply

USB Configuration Utility

System | Wireless Setting | IP Config | Encryption | About

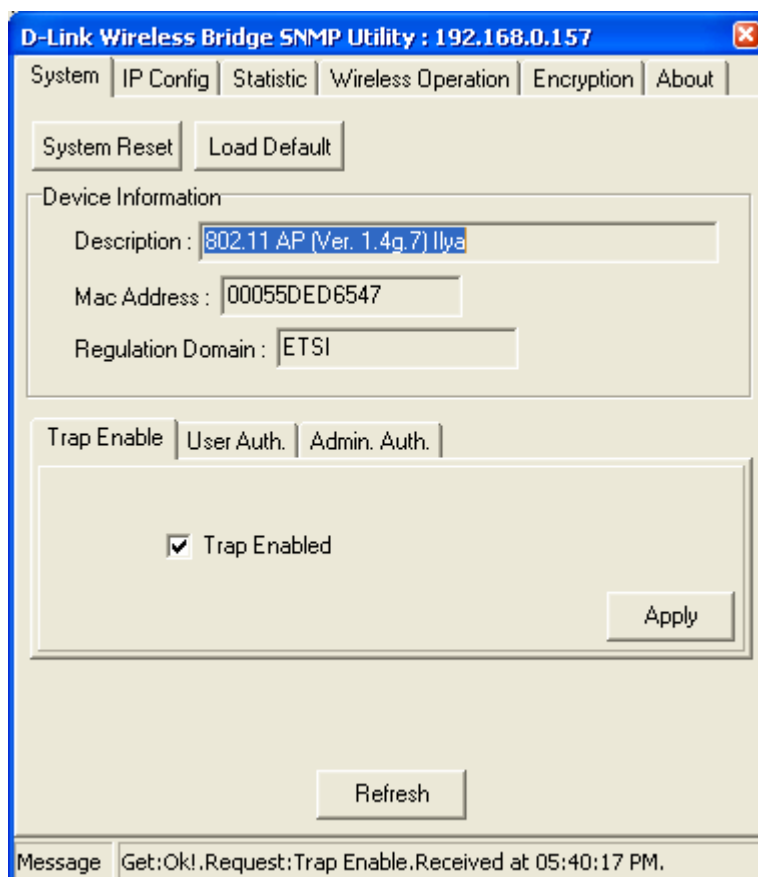
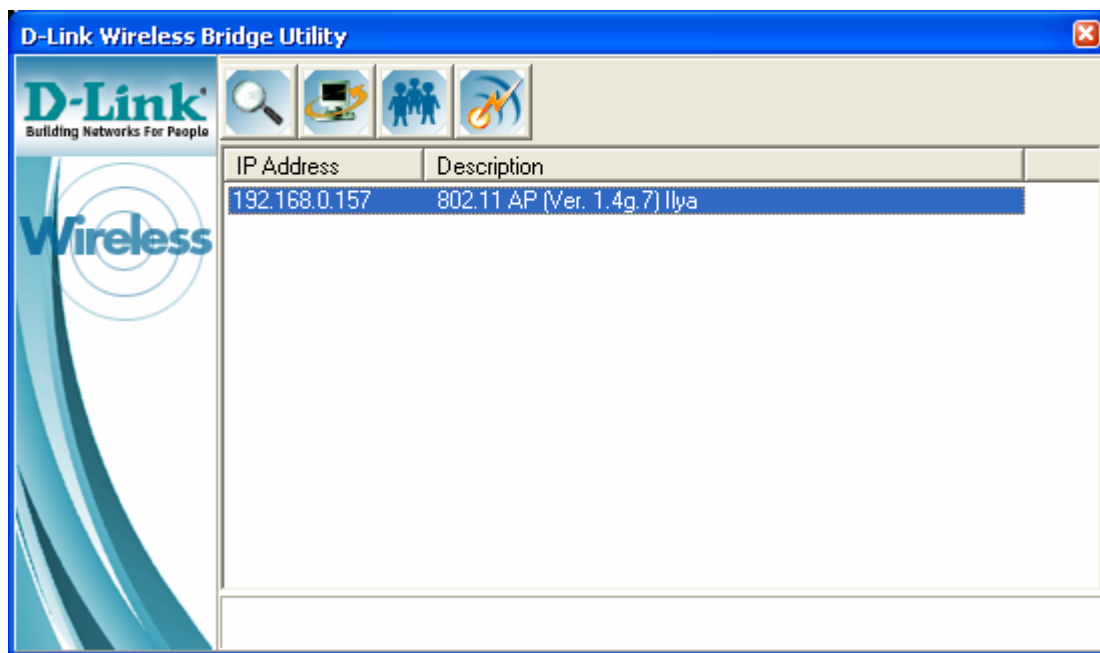
D-Link®
Building Networks For People

Copyright 2002 D-Link Systems Inc. All rights reserved.

Utility Version : 1.08.15

OK Cancel Apply

SNMP UTILITY:



D-Link Wireless Bridge SNMP Utility : 192.168.0.157

System | IP Config | Statistic | Wireless Operation | Encryption | About

Bridging Level

Mac address : 00055DED6547

IP address : 192 . 168 . 0 . 157

Subnet mask : 255 . 255 . 255 . 0

Gateway : 192 . 168 . 0 . 225

DHCP enabled : Disabled

Primary port : Ethernet

Refresh Apply

Message Get:Ok!.Request:IP Config.Received at 05:40:42 PM.

D-Link Wireless Bridge SNMP Utility : 192.168.0.157

System | IP Config | Statistic | Wireless Operation | Encryption | About

Ethernet | Wireless

Rx Item	Value	Tx Items	Value
TotalBytesRx	21441	TotalBytesTx	2170
TotalPktRx	226	TotalPackets	16
CRCErrRx	0	CRCErr	0
Multicast	11	Multicast	0
Broadcast	202	Broadcast	3
ControlFrames	0	Unicast	13
PauseFrames	0	PauseFrames	0
UnknownOPC	0	SingleDefer	0
AlignmentErr	0	MultiDefer	0
OutOfRange	0	SingleCollisions	0
CodeErrRx	0	MultiCollisions	0
FalseCarrierRx	0	LateCollisions	0
Undersize	0	Excessive	0
Oversize	0	TotalCollisions	0
TotalFragments	0		
TotalJabber	0		

Message Get:Ok!.Request:Ethernet Packet.Received at 05:41:03 PM.

D-Link Wireless Bridge SNMP Utility : 192.168.0.157

System | IP Config | Statistic | **Wireless Operation** | Encryption | About

Ethernet | **Wireless**

Rx Item	Value	Tx Items	Value
Unicast	0	Unicast	0
Broadcast	0	Broadcast	0
Multicast	0	Multicast	0
RxBeacon	0	TxB Beacon	0
RxACK	0	TxACK	0
RxRTS	0	TxRTS	0
RxCTS	0	TxCTS	0

Message | Get:Ok!.Request:Ethernet Packet.Received at 05:41:12 PM.

D-Link Wireless Bridge SNMP Utility : 192.168.0.157

System | IP Config | Statistic | **Wireless Operation** | Encryption | About

Channel ID : **Channel 7**

ESSID : default

Access Point Name : Ilya

Transmit Rates : Auto

Operation Mode

Mode : WBPoint to Point

BSS ID : 000000000000

Advance...

Refresh Apply

Message | Get:Ok!.Request:Wireless Group.Received at 05:41:25 PM.

D-Link Wireless Bridge SNMP Utility : 192.168.0.157

System | IP Config | Statistic | Wireless Operation | Encryption | About

WEP Privacy

Active Key :

WEP Type :

Authentication Type :

Key 1 :

Key 2 :

Key 3 :


Key 4 :

Message Get:Ok!.Request:Privacy Group.Received at 05:42:13 PM.

D-Link Wireless Bridge SNMP Utility : 192.168.0.157

System | IP Config | Statistic | Wireless Operation | Encryption | About

D-Link®
Building Networks For People



www.dlink.com

Version 1.0 (Build 0074)
Copyright 2002 D-Link Systems Inc. All rights reserved.

Message Get:Ok!.Request:Privacy Group.Received at 05:42:13 PM.