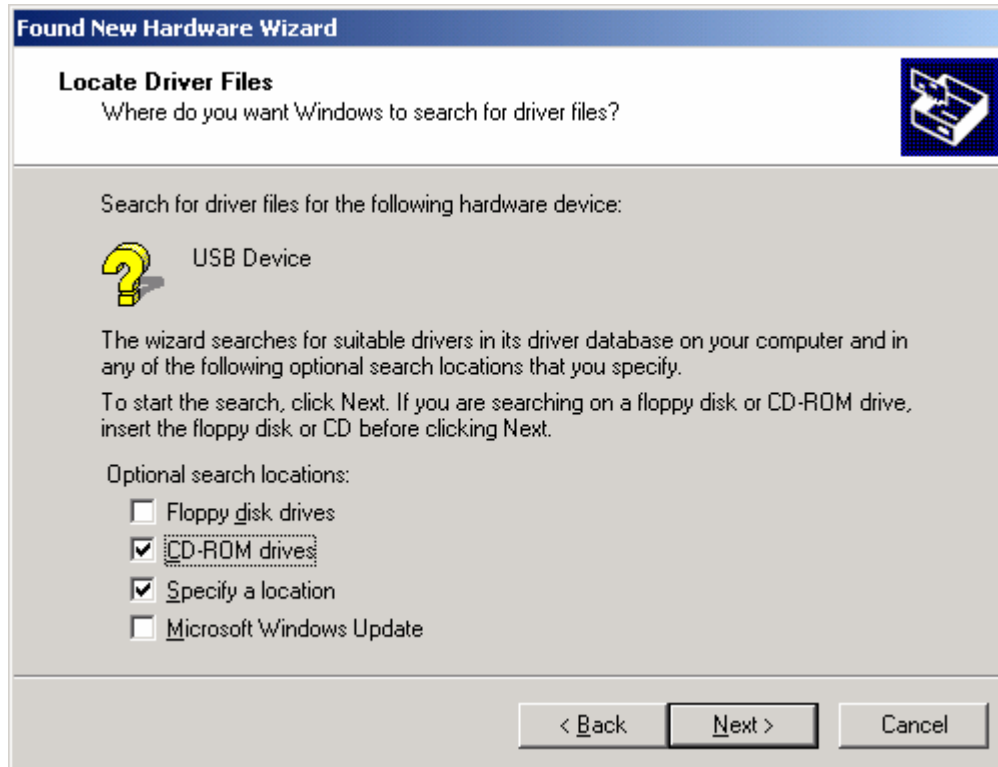
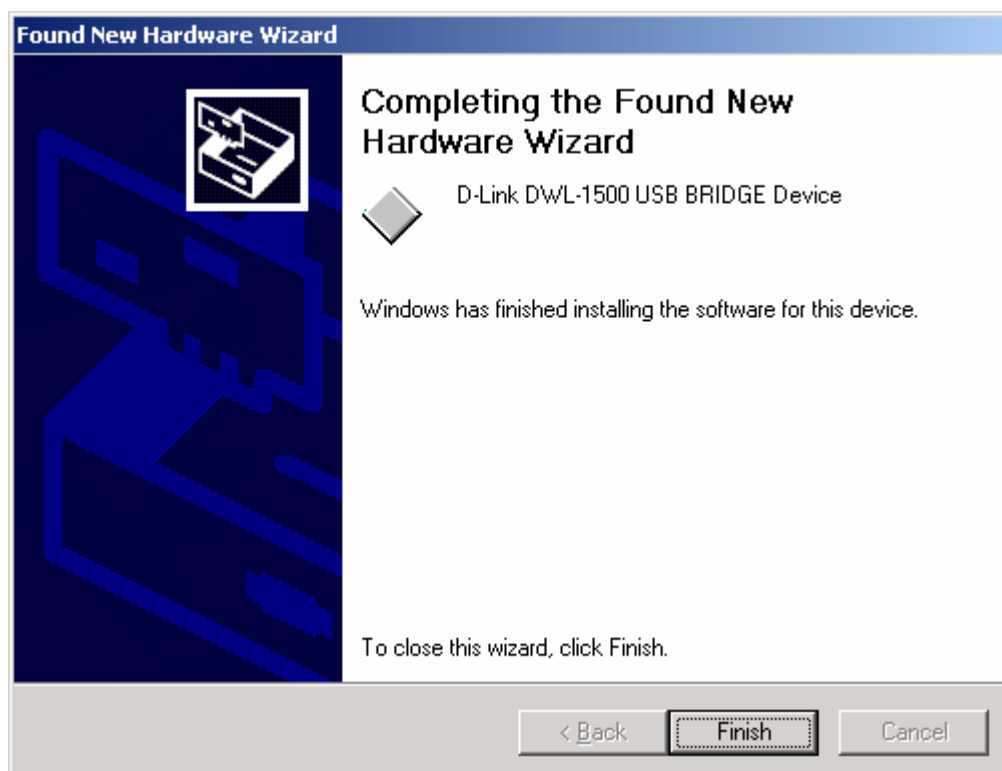
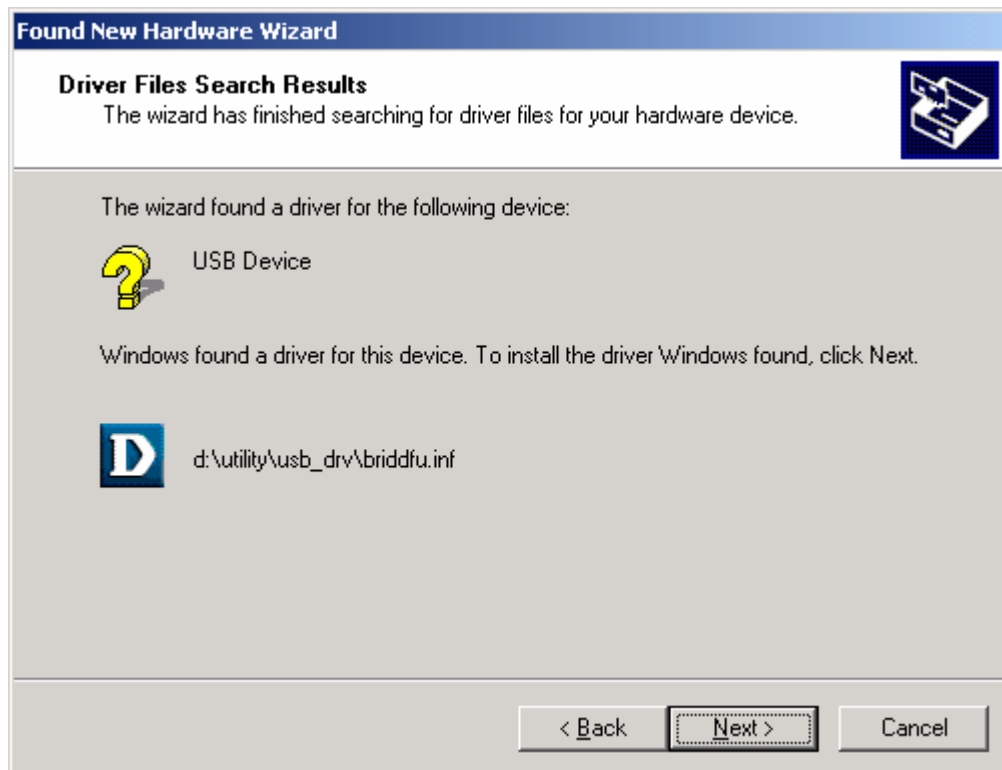
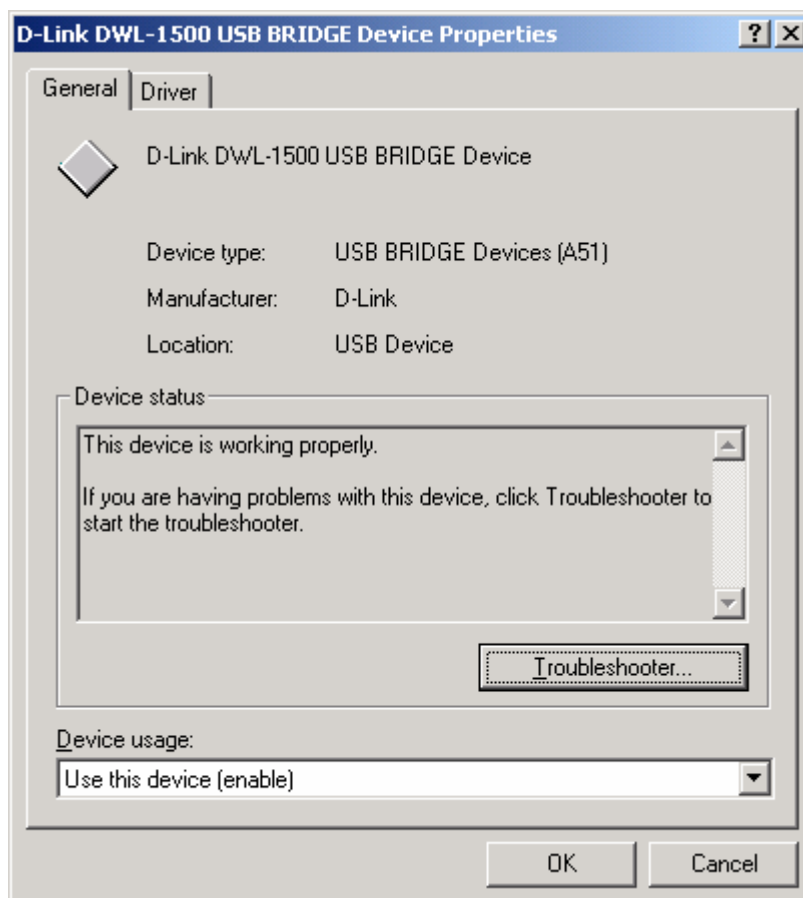
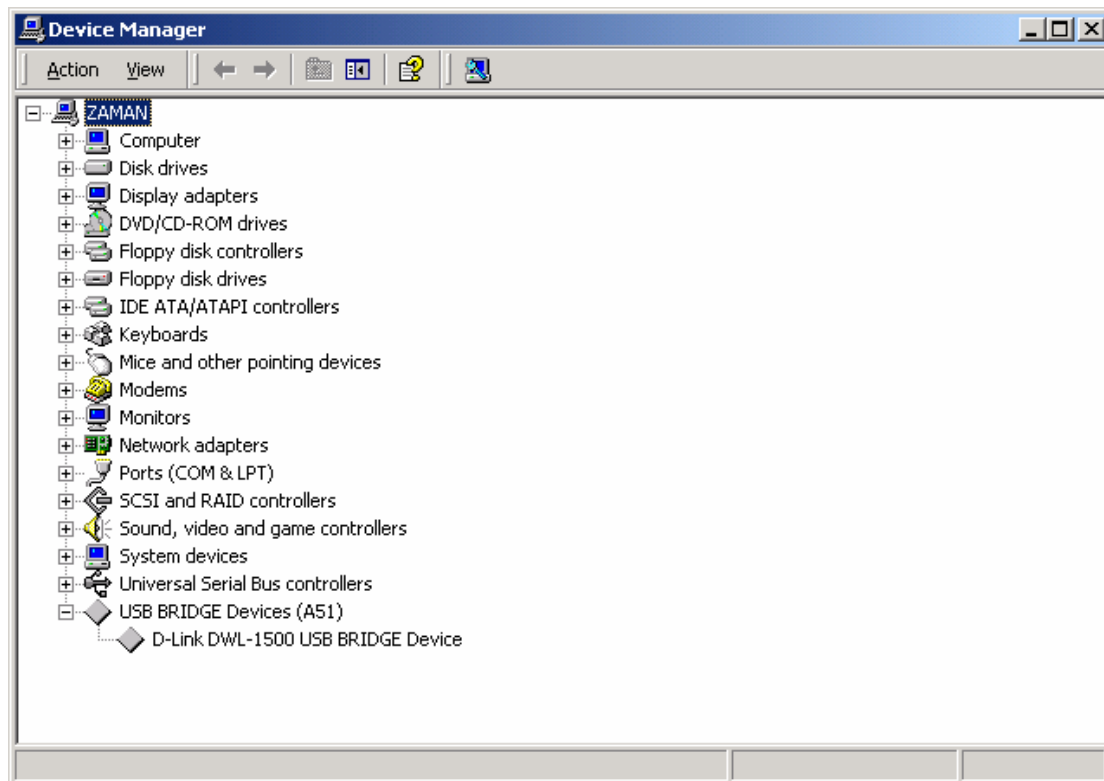


DWL-1500 Setup and testing results in Windows 2000. See end of document for testing results and tips on setup.

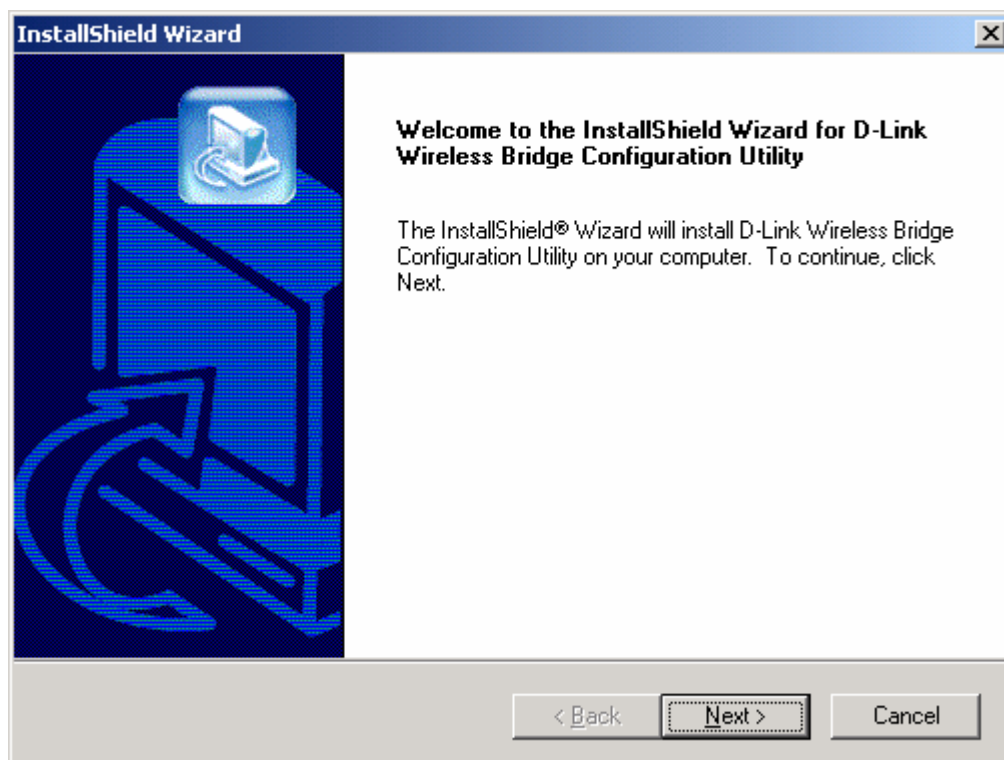
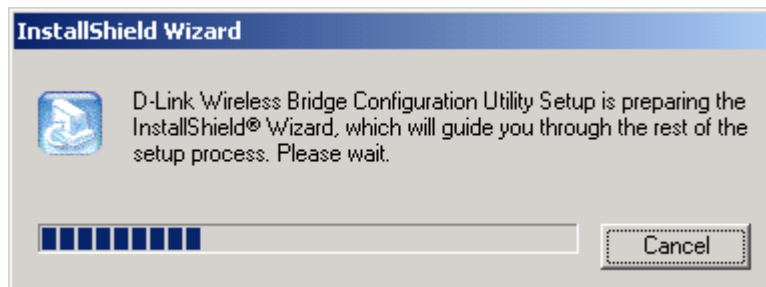








Now, you can install the Configuration Utilities by running D:\utility\setup.exe



InstallShield Wizard [X]

Customer Information

Please enter your information.

Please enter your name and the name of the company for whom you work.

User Name:
zaman

Company Name:
d

InstallShield

< Back Next > Cancel

InstallShield Wizard [X]

Choose Destination Location

Select folder where Setup will install files.

Setup will install D-Link Wireless Bridge Configuration Utility in the following folder.

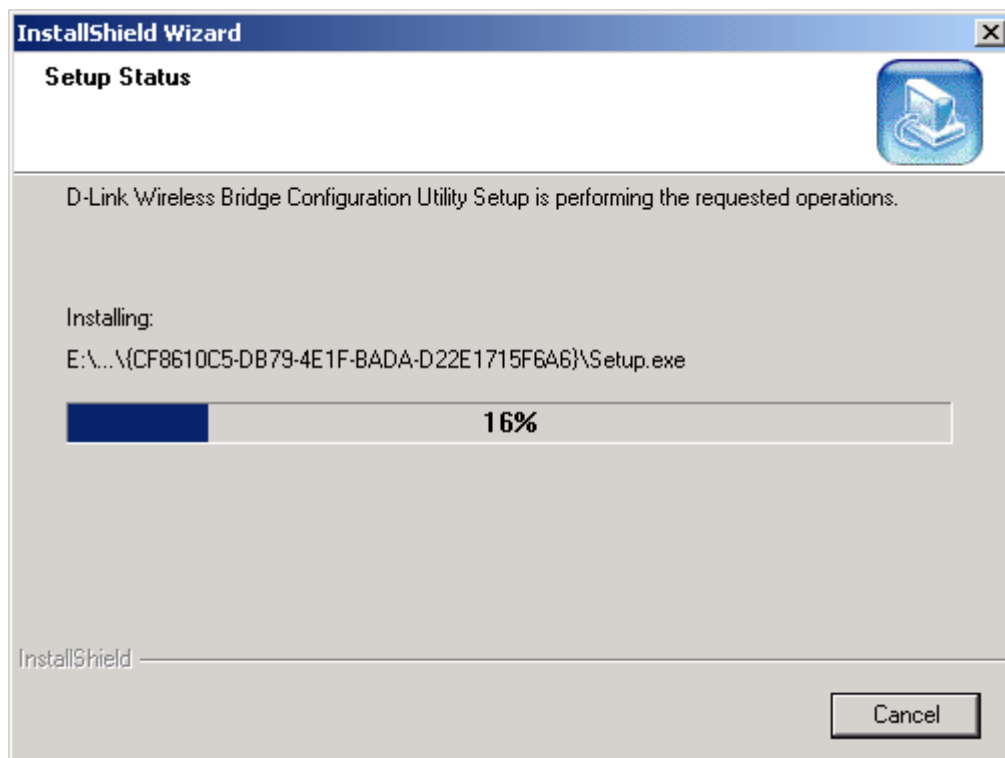
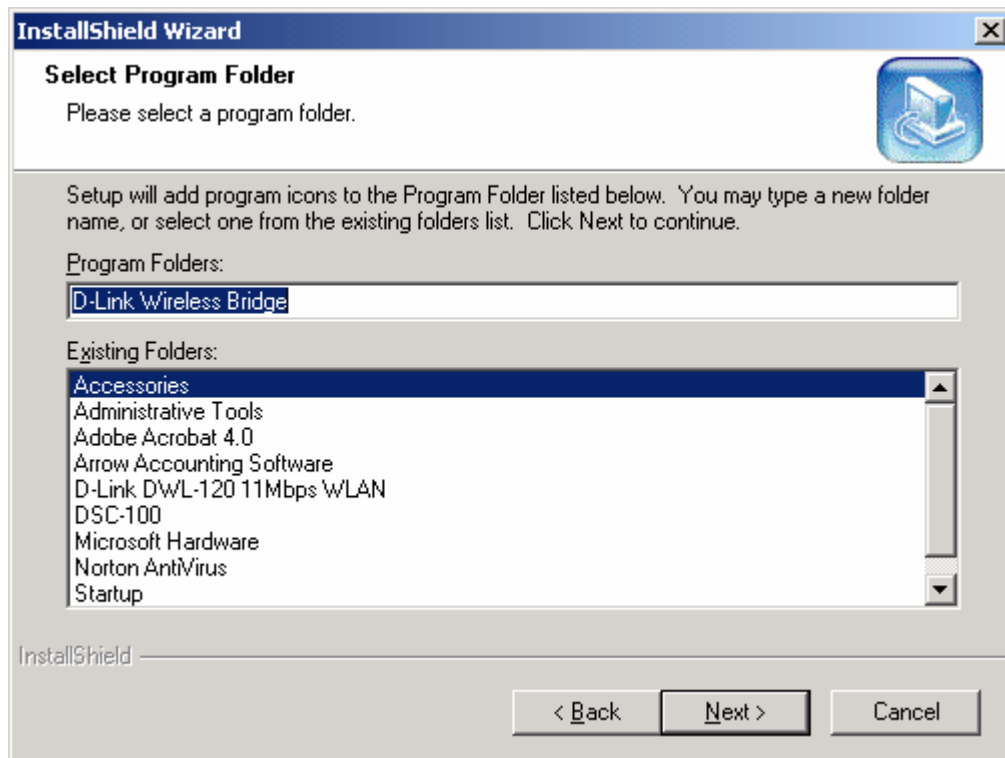
To install to this folder, click Next. To install to a different folder, click Browse and select another folder.

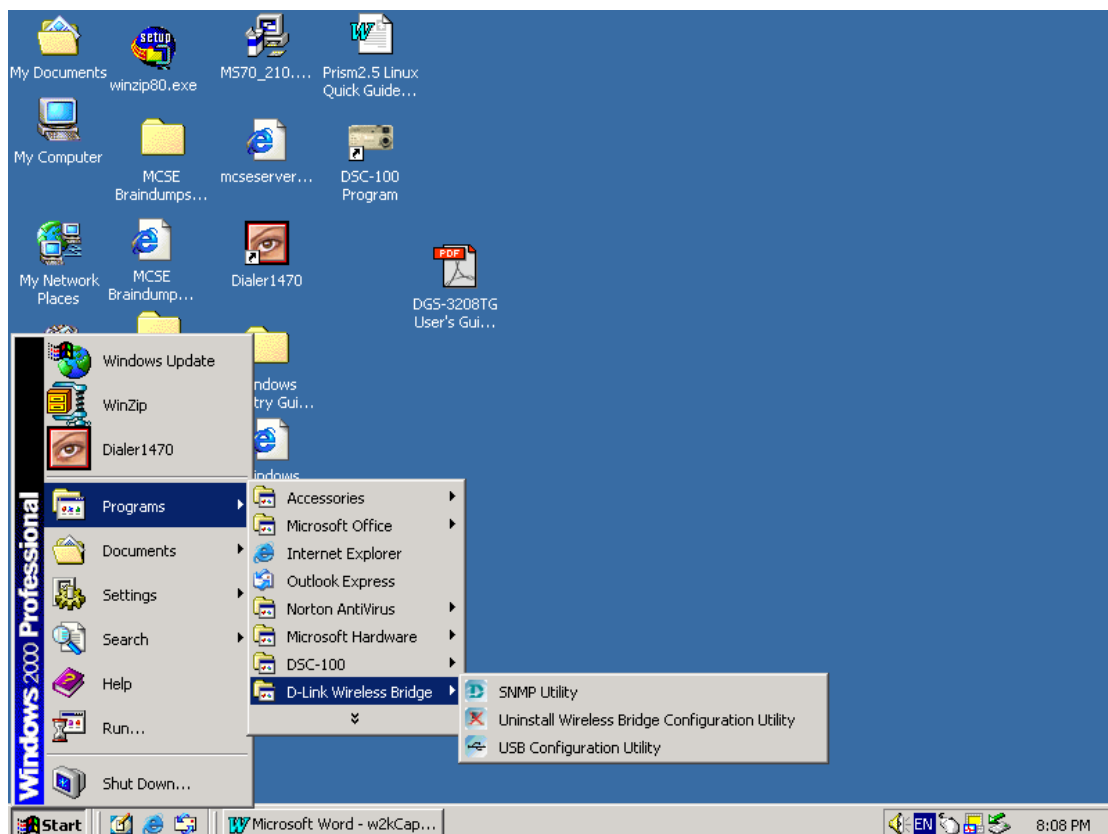
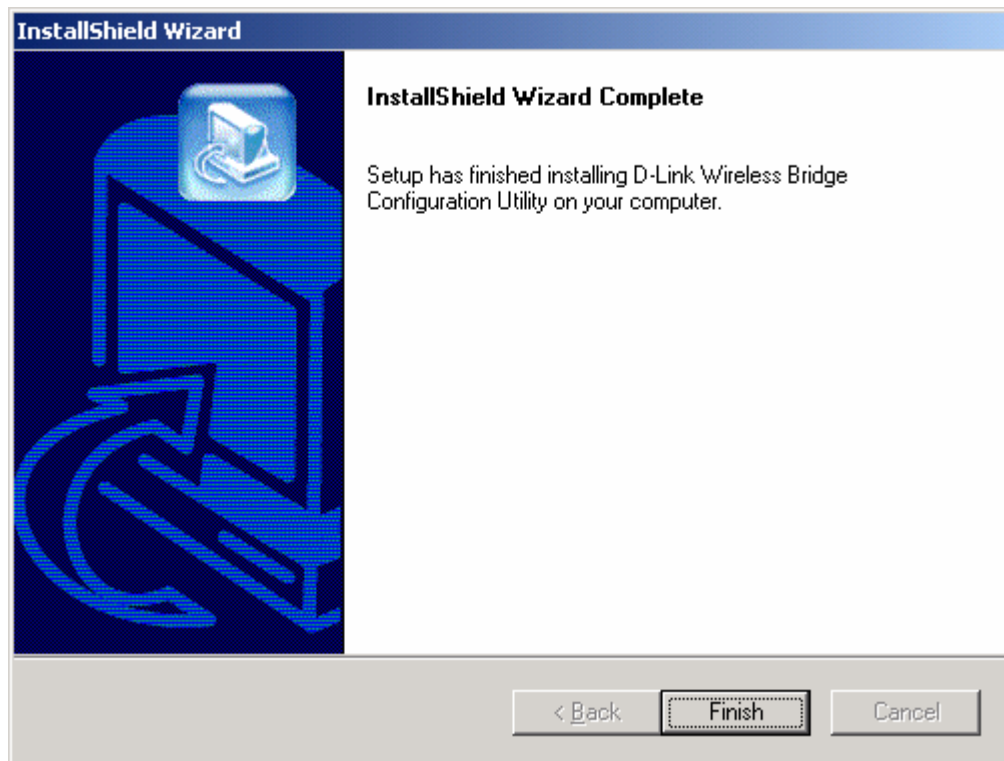
Destination Folder
E:\Program Files\WirelessBridge

Browse...

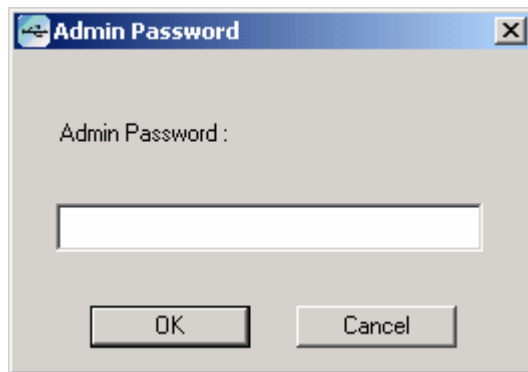
InstallShield

< Back Next > Cancel

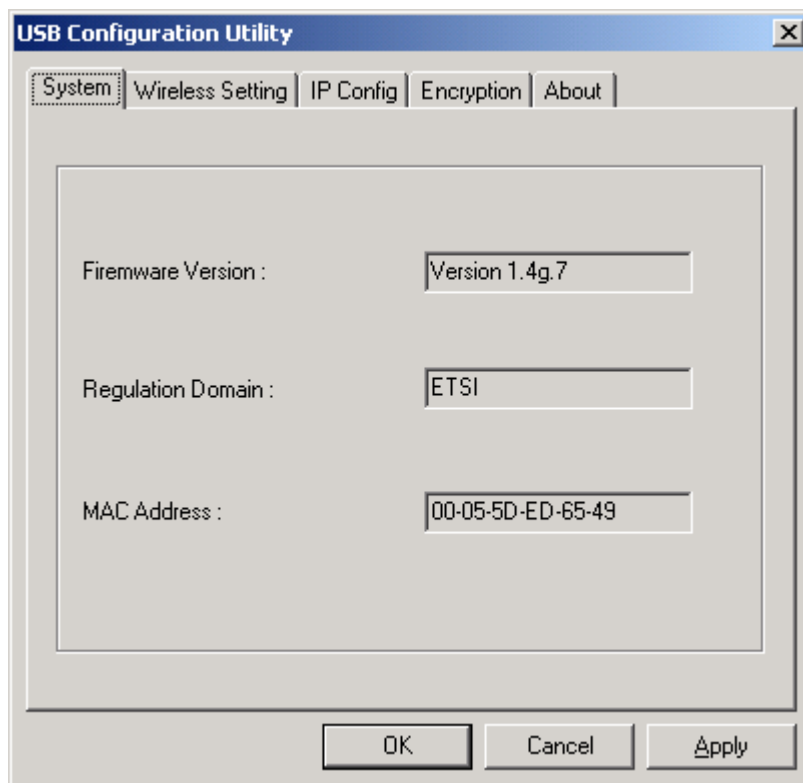




When you go to USB Configuration Utility, you will be prompted for the following:



The Admin password is "public"



USB Configuration Utility [X]

System | **Wireless Setting** | IP Config | Encryption | About

Access Point Name : Marpi

Wireless ESSID : default

Operational Rate Set : Auto

Wireless Channel : Channel 7

Operational Mode : WBridge Point to Point

Preferred BSSID : 00 00 00 00 00 00

Advanced...

OK Cancel Apply

USB Configuration Utility [X]

System | **Wireless Setting** | IP Config | Encryption | About

IP Address : 192 . 168 . 0 . 158

Subnet mask : 255 . 255 . 255 . 0

Gateway : 192 . 168 . 0 . 225

DHCP Client : Disable

Primary Port : Ethernet

OK Cancel Apply

USB Configuration Utility

System | Wireless Setting | IP Config | Encryption | About

WEP Type : **Disable** Active Key ID : **None**

Authentication Type : **Both Type**

64 bit

Key1	10	11	12	13	14	Key3	30	31	32	33	34
Key2	20	21	22	23	24	Key4	40	41	42	43	44

128 bit

Key1	10	11	12	13	14	00	00	00	00	00	00	00	00
Key2	20	21	22	23	24	00	00	00	00	00	00	00	00
Key3	30	31	32	33	34	00	00	00	00	00	00	00	00
Key4	40	41	42	43	44	00	00	00	00	00	00	00	00

OK Cancel Apply

USB Configuration Utility

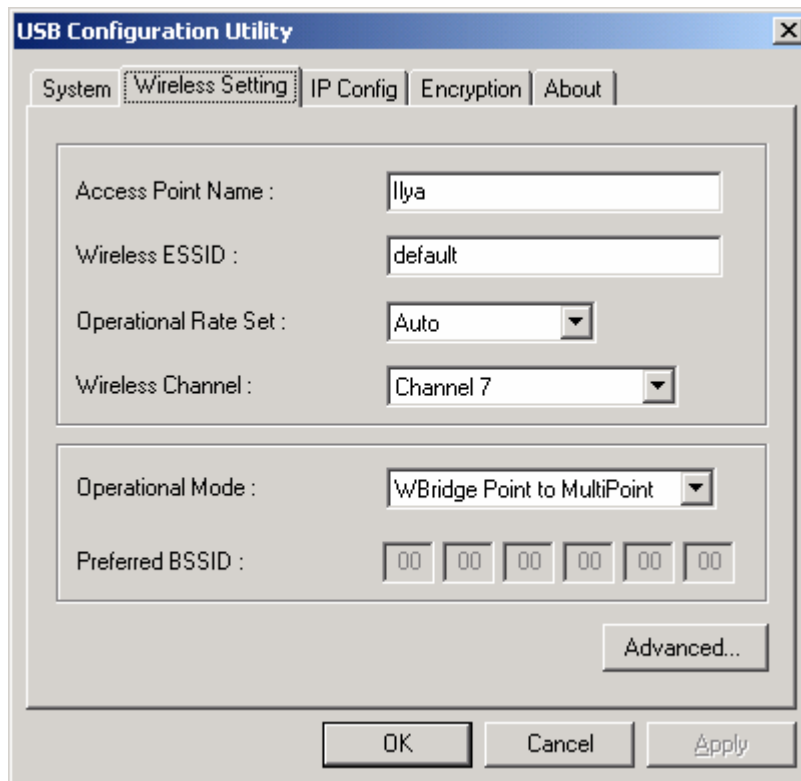
System | Wireless Setting | IP Config | Encryption | About



Copyright 2002 D-Link Systems Inc. All rights reserved.

Utility Version : 1.08.15

OK Cancel Apply



Notice that no BSSID is required for this setting. The same also applies to “Access point” mode.

Testing results

- One DWL-1500 was connected via a X-over cable to a switch in RMA room and the other DWL-1500 was connected to my computer via a straight thru cable.
- Both the Power and LAN lights should be lit the whole time. The WLAN light only blinks approx. twice every sec when settings were saved during the first time setup. After that, when ever the settings were saved, the WLAN did not blink rapidly. The WLAN light only blinks when there is wireless traffic (i.e each time a ping is done, it will blink).
- The operation mode is very important. If it is set to “WBridge Point to Multipoint”, then no BSSID is required. If it is set to “WBridge Point to Point”, you **MUST** specify the BSSID of the bridge it is to communicate with, otherwise there will be no communication. The BSSID is the MAC address of the remote Bridge.
- The ping command will still be successful when the USB cable is connected to your computer. The ping command was successful in both “WBridge Point to Multipoint” and “WBridge Point to Point”
- Both units must be set to the same channel, otherwise no communication will occur.
- It does not matter if the primary port is set to “Ethernet” or “Wireless”, as this is only used for DHCP purpose. When DHCP is disabled, it does not matter what the primary port set to.
- When the SNMP utility program was run, the saved settings were not shown. I am not sure why. See attachment below

D-Link Wireless Bridge SNMP Utility : 192.168.0.157

System

IP Config

Statistic

Wireless Operation

Encryption

About

Bridging Level

Mac address :

IP address :

.

.

.

Subnet mask :

.

.

.

Gateway :

.

.

.

DHCP enabled :

Disabled

Primary port :

Ethernet

Refresh

Apply

Message

Get:Timeout!.Request:IP Config,Received at 09:40:55 PM.