



Install Guide

Version 1.04

DWL-3200AP

Managed Wireless Access Point

System Requirements

Minimum System Requirements:

- CD-ROM Drive
- Computers with Windows®, Macintosh®, or Linux-based operating systems
- Installed Ethernet Adapter Internet Explorer version 6.0 or Netscape Navigator™ version 7.0 and above

Package Contents



**D-Link AirPremier™ DWL-3200AP
Managed Wireless Access Point**



Power Cord



Power over Ethernet base unit



Ethernet Cable



CD-ROM with Manual



Mounting Plate



Power Adapter-DC 48V, 0.4A



Using a power adapter with a different voltage rating will damage and void the warranty of this product.

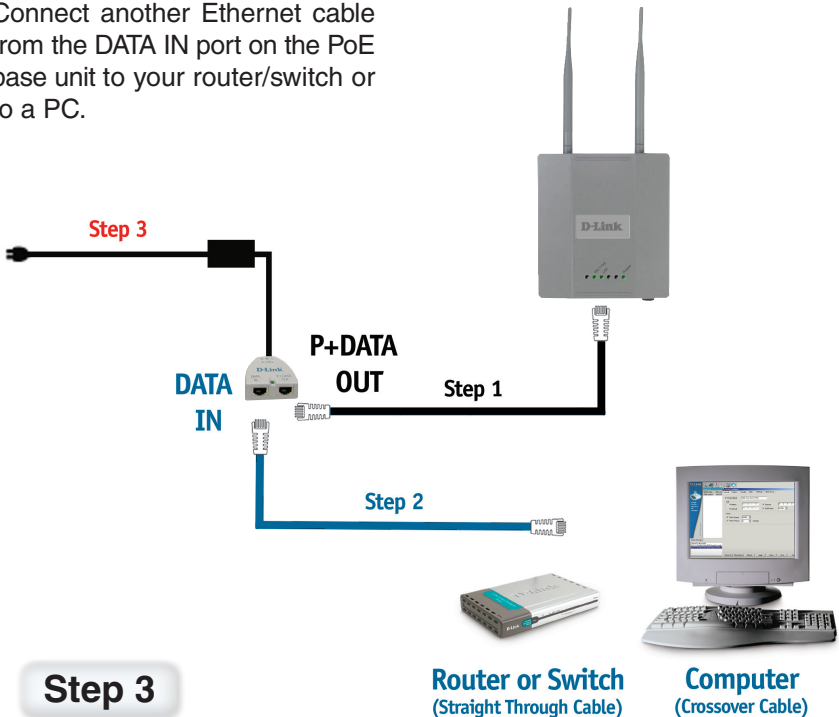
Installing the Hardware

Step 1

Connect one end of an Ethernet cable (included with your package) to the LAN port on the DWL-3200AP and the other end of the Ethernet cable to the port labeled P+DATA OUT on the PoE base unit.

Step 2

Connect another Ethernet cable from the DATA IN port on the PoE base unit to your router/switch or to a PC.



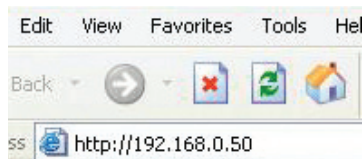
Step 3

Attach the power adapter to the connector labeled POWER IN on the PoE base unit. Attach the power cord to the power adapter and into an electrical outlet.

Using the Setup Wizard

Open your Web browser

and type `http://192.168.0.50` into the URL address box. Then press the Enter or Return key.



The logon pop-up screen will appear.

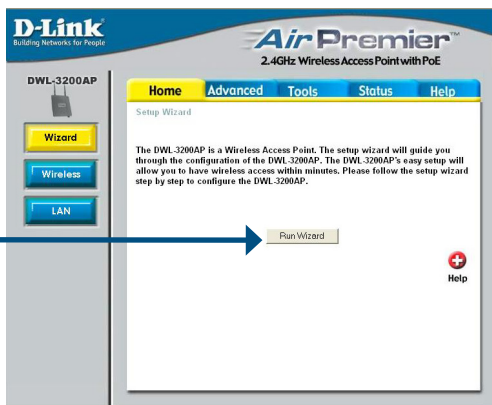
Type admin

for the username and leave the password field blank.



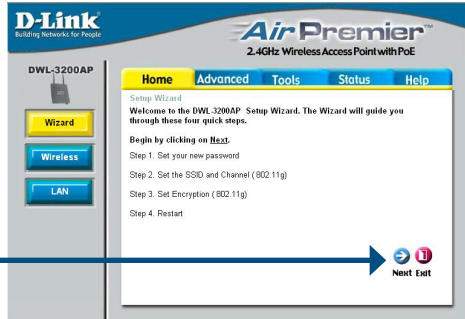
Once you have logged in, the **Home** screen will appear.

Click **Run Wizard**



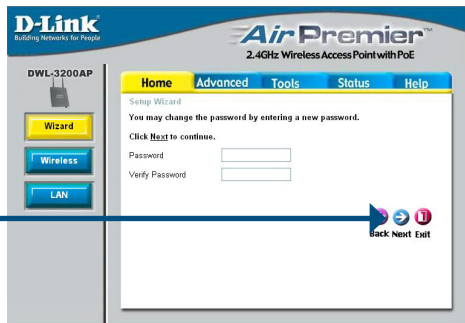
You will see the following screens.

Click **Next**



Step 1 - Setup your new password. You have the option to establish a password.

Click **Next**



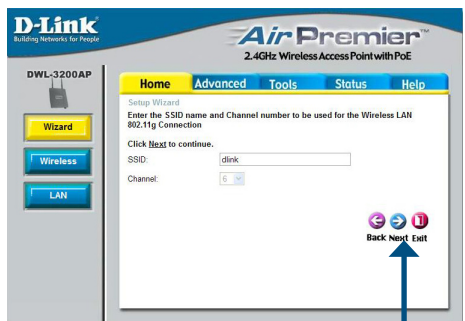
For **802.11g** networks please do the following:

Step 2 - Set Wireless LAN Connection.

By default the DWL-3200AP **SSID** is set to **dlink**.

You may change the channel after the wizard is complete. Go to **Home** > **Wireless** to change it.

Click **Next**

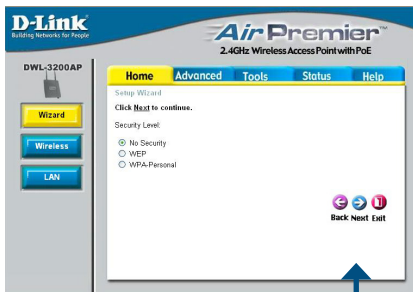


For **802.11g** networks please continue as follows:

Step 3 - Security Level

The DWL-3200AP is capable of three levels of wireless encryption: No Security, WEP, and WPA-Personal.

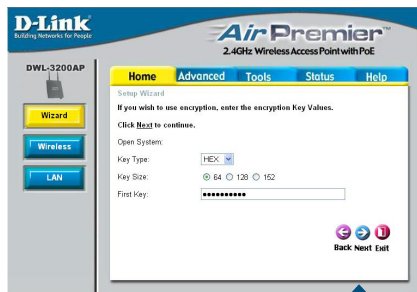
By default encryption is disabled. You can change the encryption settings for more secure wireless communication.



Click **Next**

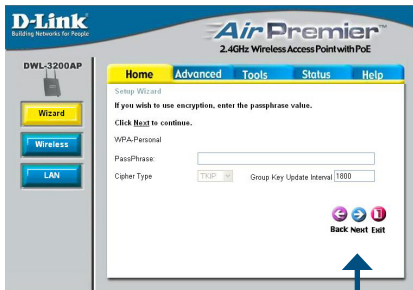
If you choose WEP, you can use Hexadecimal or ASCII Key type and select 64, 128, or 152 bits.

You can only set the First Key in the wizard.

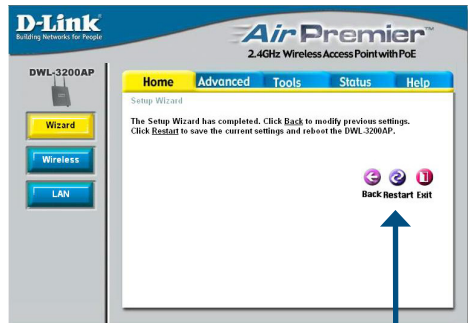


Click **Next**

If you choose WPA-Personal, enter the passphrase here. 1800 for **Group Key Update Interval** is recommended.

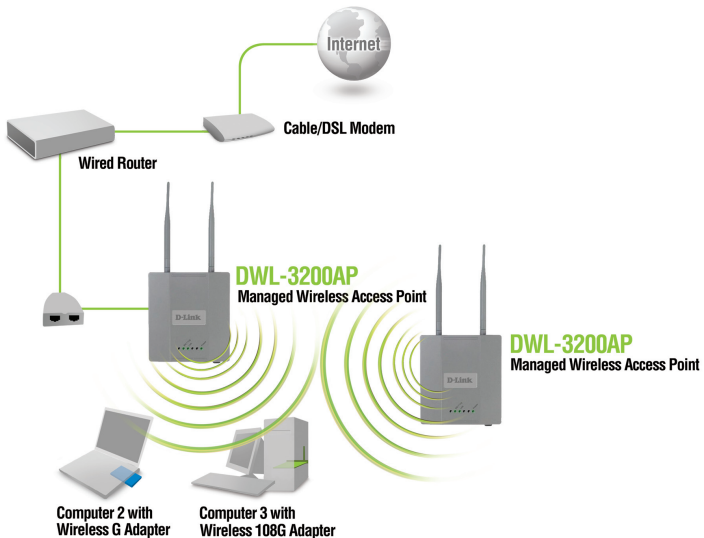


Click **Next**



Your Setup is Complete!

When you have completed the steps in this Quick Installation Guide, your connected network should look similar to this:



Technical Support

D-Link's website contains the latest user documentation and software updates for D-Link products.

D-Link provides free technical support for customers within the United States and Canada for the duration of the product's warranty period.

U.S. and Canadian customers can contact D-Link Technical Support through our website or by phone.

United States

Telephone

(877) 453-5465

Monday through Friday, 8:00am to 5:00pm PST.

World Wide Web

<http://support.dlink.com>

E-mail

support@dlink.com

Canada

Telephone

(800) 361-5265

Monday through Friday, 7:30am to 9:00pm EST.

World Wide Web

<http://support.dlink.ca>

E-mail

support@dlink.ca



Version 1.04
March 8, 2006

©2005-2006 D-Link Corporation/D-Link Systems, Inc. All rights reserved. D-Link and the D-Link logo are registered trademarks of D-Link Corporation or its subsidiaries in the United States and other countries. Other trademarks are the property of their respective owners. All references to speed are for comparison purposes only. Maximum wireless signal rate derived from IEEE Standard 802.11g specifications. Actual data throughput will vary. Network conditions and environmental factors, including volume of network traffic, building materials and construction, and network overhead, lower actual data throughput rate. Environmental factors may adversely affect wireless signal range. Product specifications, size, and shape are subject to change without notice, and actual product appearance may differ from that depicted herein. Visit www.dlink.com for more details.