

# **D-Link *AirPlus* DWL-650+**

## **2.4 GHz Wireless Cardbus Adapter**

**Manual**

# Contents

1. Package Contents .....	3
2. Introduction .....	4
3. Wireless Basics .....	6
4. Getting Started .....	9
5. Installing the DWL-650+ .....	12
6. Using the Configuration Utility .....	15
7. Troubleshooting .....	22
8. Networking Basics .....	26
9. Technical Specifications .....	54
10. Contacting Technical Support .....	56
11. Limited Warranty and Registration .....	57

# 1. Package Contents



## Contents of Package:

- **D-Link AirPlus DWL-650+** 2.4GHz Wireless Cardbus Adapter
- Manual, QIG, and Drivers on CD
- Printed Quick Installation Guide

*If any of the above items are missing, please contact your reseller.*

## System Requirements:

- A laptop computer with an available 32-bit Cardbus PC Card slot
- Windows XP, Windows 2000, Windows Me, or Windows 98
- Cardbus Controller, properly installed and working
- At least 32 MB of memory and a 300 MHz processor
- An 802.11b Access Point (e.g., DWL-900AP+ for **Infrastructure Mode**) or another 802.11b wireless adapter (e.g., DWL-520 for **Ad-Hoc mode**.)

## 2. Introduction

The D-Link *AirPlus* DWL-650+ Wireless Cardbus Adapter is an enhanced 802.11b high-performance, wireless adapter that supports high-speed wireless networking at home, at work or in public places.

Unlike most 802.11b network cards, the DWL-650+ provides speeds of up to 22 Mbps (compared to the standard 11 Mbps) when used with other D-Link *AirPlus* products such as the DWL-520+ Wireless PCI Adapter.

Now increased speed is available when you enable the new **4x** feature (when used with the 4x-enabled DI-614+ Wireless Broadband Router or the 4x-enabled DWL-900AP+ Wireless Access Point.)

The DWL-650+ is also compatible with existing 802.11b devices such as the D-Link *AirPlus* family of products including the DWL-520+ Wireless PCI Adapter, the DWL-900AP+ Wireless Access Point and the DI-614+ Wireless Broadband Router.

Extra security is provided by the addition of 802.1x\* support. With 802.1x compatible routers and access points along with a radius server, the DWL-650+ will participate in a much more secure network (that includes client authentication) than is available with WEP encryption alone.

It is an ideal way to connect one laptop computer to a Wireless Local Area Network (WLAN.) After completing the steps outlined in the **Quick Installation Guide** (included in the package) you will have the ability to share information and resources, such as files and printers, and take full advantage of a “connected” environment for work or play!

The DWL-650+ includes software drivers for the most popular Microsoft Windows operating systems (Windows XP, Windows 2000, Windows Me, Windows 98) and can be integrated into a larger network, running, in either Ad Hoc mode (without an Access Point) or Infrastructure mode (with an Access Point.) *Please take a look at our **Getting Started** section in this manual to see examples of typical network setups using the DWL-650+ in both Infrastructure and Ad-Hoc modes.*

This manual provides a quick introduction to wireless technology and its application as it relates to networking. Take a moment to read through this manual and get acquainted with wireless technology.

\* 802.1x Authentication requires EAP (Extensible Authentication Protocol.) 802.1x supported EAP is available through the Windows XP Operating System. You will need to use the same type of EAP protocol on all the devices in your network when using the 802.1x feature.

# Features and Benefits

- Supports 802.1x authentication security
- Now even faster performance with the new 4x feature, when used with 4x-enabled DI-614+ or 4x-enabled DWL-900AP+
- Speeds up to 2x faster, with data transfer rates up to 22Mbps, when used with other D-Link AirPlus products
- Operates in the 2.4GHz frequency range
- Maximum reliability, throughput and connectivity with automatic data rate switching
- Supports Wired Equivalent Privacy (WEP) data encryption at 64/128/256-bit encryption
- Supports infrastructure networks via an Access Point and peer-to-peer communication in ad-hoc mode
- Built-in dual diversity antenna for reduced interference in a multi-path environment
- 32-bit Cardbus Performance
- User-friendly configuration and diagnostic utilities

## LEDs

**LED** stands for **L**ight-**E**mitting **D**iode. The DWL-650+ has two LEDs:

1. **Power** - **Green** LED lights **on** steady to indicate a proper connection to a power source.
2. **Link** - **Green** LED flashes to indicate **activity** on the network and lights **on** steady to indicate that a **link** to the network is established.



### 3. Wireless Basics

D-Link *AirPlus* wireless products are based on industry standards to provide easy-to-use and compatible high-speed wireless connectivity within your home, business or wherever a wireless network is available. Strictly adhering to the IEEE standard, the D-Link *AirPlus* wireless family of products will allow you to access the data you want, when and where you want it. No longer will you be limited to one location or forced to run new wiring through your home or office. You will be able to enjoy the freedom that wireless networking delivers.

A wireless local area network (WLAN) is a cellular computer network that transmits and receives data with radio signals instead of wires. Wireless LANs are used increasingly in both home and office environments, and public areas such as airports, coffee shops and universities. Innovative ways to utilize WLAN technology are helping people to work and communicate more efficiently. Increased mobility with the absence of cabling and other fixed infrastructure have proven to be beneficial for many users.

Wireless users can use the same applications they use on a wired network. Wireless adapter cards used on laptop and desktop systems, support the same protocols as Ethernet adapter cards. For most users, there is no noticeable functional difference between a wired Ethernet desktop computer and a wireless computer equipped with a wireless adapter other than the added benefit of the ability to roam within a wireless-cell. Under many circumstances, it may be desirable for mobile network devices to link to a conventional Ethernet LAN in order to use servers, printers or an Internet connection supplied through the wired LAN. A Wireless Access Point (AP) is a device used to provide this link.

People use wireless LAN technology for many different purposes.

**Mobility** - Productivity increases when people have access to data in any location within the operating range of the WLAN. Management decisions based on real-time information can significantly improve worker efficiency.

**Low Implementation Costs** – WLANs (Wireless Local Area Networks) are easy to set up, manage, change and relocate. Networks that frequently change, both physically and logically, can benefit from WLANs ease of implementation. WLANs can operate in locations where installation of wiring may be impractical.

**Installation Speed and Simplicity** - Installing a wireless LAN system can be fast and easy and can eliminate the need to install cable through walls and ceilings.

## Wireless Basics

**Network Expansion** - Wireless technology allows the network to go where wires cannot go.

**Reduced Cost-of-Ownership** - While the initial investment required for Wireless LAN hardware might be higher than the cost of wired LAN hardware, overall installation expenses and life-cycle costs will be significantly lower. Long-term cost benefits are greatest in dynamic environments requiring frequent moves, adds, and changes.

**Scalability** - Wireless Local Area Networks (WLANs) can be configured in a variety of topologies to meet the needs of specific applications and installations. Configurations are easily changed and range from peer-to-peer networks suitable for a small number of users to full infrastructure networks of thousands of users that allow roaming over a broad area.

*Some D-Link devices that are compatible with the D-Link DWL-650+ are:*

- ◆ D-Link DWL-520+ 2.4GHz Wireless PCI cards used with desktop computers
- ◆ D-Link DI-614+ Wireless Broadband Router
- ◆ D-Link DWL-900AP+ Wireless Access Point

### **Standards - Based Technology**

The IEEE standard-based technology assures that the D-Link *AirPlus* Products are interoperable with existing compatible 2.4GHz wireless technology. This means you will be able to transfer large files quickly or even watch a movie in MPEG format over your network without noticeable delays. The technology works by using multiple frequencies in the 2.4GHz range at speeds up to 22Mbps. D-Link *AirPlus* products will automatically sense the best possible connection speed to ensure the greatest speed and range possible with the technology.

802.1x provides an extra level of security to your wireless network. Through its Authentication protocol (when 802.1x is activated), only clients with 802.1x authentication will be permitted to communicate in your network; all other clients will be denied access. This is a far more secure wireless network than has previously been available.

All devices on the network must be 802.1x compatible and must share the same EAP type. For Authentication purposes you will need a radius server in your network.

## Installation Considerations

Designed to go up to 1,312 feet (400 meters) outdoors and up to 328 feet (100 meters) indoors, the D-Link *AirPlus* DWL-650+ lets you access your network with your laptop computer from virtually anywhere. Keep in mind, however, that the number, thickness and location of walls, ceilings or other objects that the wireless signal must pass thru may limit range. Typical ranges vary depending on the types of materials and any background RF (radio frequency) noise in your home or business. The key to maximizing range is to follow these basic guidelines:

1. Keep the number of walls and ceilings between the wireless Access Point and your receiving device (i.e., the DWL-650+) to a minimum - Each wall or ceiling can reduce your D-Link *AirPlus* Wireless product's range from 3-90 feet (1-30 meters.) Position your Access Points, Residential Gateways, and computers so that the number of walls or ceilings is minimized.
2. Be aware of the direct line between Access Points, Residential Gateways (routers), and computers. A wall that is 1.5 feet thick (.5 meters), at a 45-degree angle appears to be almost 3 feet (1 meter) thick. At a 2-degree angle it looks over 42 feet (14 meters) thick! Try to make sure that the Access Points and Adapters are positioned so that the signal will travel straight through a wall or ceiling for better reception.
3. Building Materials make a difference - A solid metal door or aluminum studs may have a negative effect on range. Try to position Access Points, and computers with wireless adapters so that the signal passes through drywall or open doorways and not other materials.
4. Make sure that the device's antenna is positioned for best reception by using the software signal strength tools included with your product.
5. Keep your product away (at least 3-6 feet or 1-2 meters) from electrical devices or appliances that may generate extreme RF noise.



## Wireless Basics

For the average home, signal range should not be an issue. If you experience low or no signal strength in areas of your home that you wish to access, consider positioning the Access Point in a location directly between the computers with wireless adapters. Additional Access Points can be connected to provide better coverage in rooms where the signal does not appear as strong as desired.

Using radio frequency (RF) technology, WLANs (Wireless Local Area Networks) transmit and receive data over the air, minimizing the need for wired connections. Thus, WLANs combine data connectivity with user mobility, and, through simplified configuration, enable movable LANs.

## 4. Getting Started

**Right out of the box, with its default settings, the DWL-650+ will automatically connect with other D-Link *Air* or *AirPlus* products.**

For the price of a single IP Address from your Broadband Internet Service provider you can share the Internet with all the computers on your local network, without sacrificing speed or security, using D-Link *AirPlus* networking products.

There are basically two modes of networking:

- Infrastructure** – using a Router/ Access Point, such as the DWL-900AP+
- Ad-Hoc** – directly connecting to another computer, for peer-to-peer communication, using wireless network adapters on each computer, such as two or more DWL-650+ Cardbus adapters.

On the following pages we will show you an example of an **Infrastructure Network** and an **Ad-Hoc Network**.

An **Infrastructure** network contains an Access Point/Router.

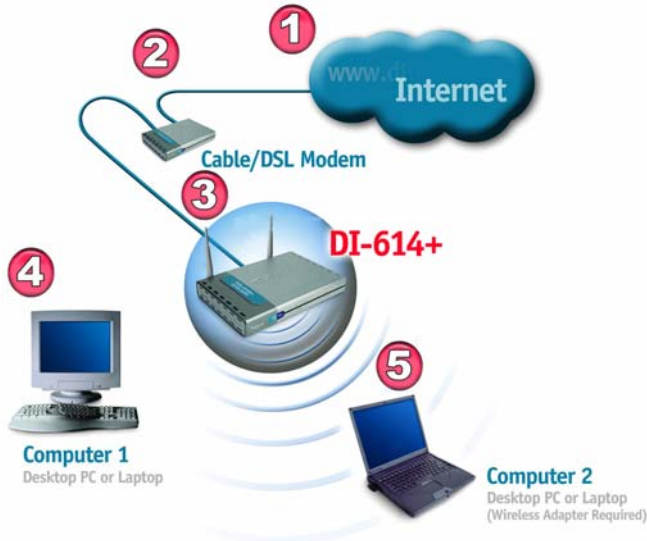
The **Infrastructure Network** example shown on the following page contains the following D-Link network devices:

- |  |                                       |
|--|---------------------------------------|
| A wireless Broadband Router -                        | <b>D-Link <i>Air</i> DI-614+</b>      |
| A laptop computer with a wireless network adapter -  | <b>D-Link <i>AirPlus</i> DWL-650+</b> |
| A desktop computer with a wireless network adapter - | <b>D-Link <i>AirPlus</i> DWL-520+</b> |
| A Cable modem -                                      | <b>D-Link DCM-201</b>                 |

***DHCP*** stands for *Dynamic Host Configuration Protocol*. It is a protocol for assigning IP Addresses "automatically." With a *DHCP-capable gateway/router*, there is no need to manually assign an IP Address.

## Getting Started

### Setting Up an Infrastructure Network



Please remember that **D-Link AirPlus** wireless devices are pre-configured to connect together, right out of the box, with the default settings.

- 1 You will need a broadband Internet access (Cable/DSL) subscription.
- 2 Consult with your Cable/DSL provider for proper installation of the modem.
- 3 Connect the modem to a wireless Broadband router (the **D-Link DI-614+**.) See the **Quick Installation Guide** included with the router.
- 4 Install the drivers for the **DWL-520+** wireless network adapter into the desktop computer. See the **Quick Installation Guide** included with the adapter.
- 5 Install the drivers for the **D-Link AirPlus DWL-650+** wireless network adapter into the laptop computer. See the **Quick Installation Guide** included with the **DWL-650+**.

*If you are using the 802.1x protocol in your network, your setup may be different than that pictured above. Please refer to the manual that came with your D-Link 802.1x compatible router or access point for further tips on setting up a more secure network.*

## Getting Started

### Setting up a Wireless Ad Hoc Network



- 1** Install the **D-Link AirPlus DWL-520+** wireless network adapter into the desktop computer. See the **Quick Installation Guide** included with the product for installation instructions.
- 2** Install the **DWL-650+** into a laptop computer. See the **Quick Installation Guide** included with the product.
- 3** Set the wireless configuration for the adapters to Ad-Hoc mode, set the adapters to the same channel, and assign an IP Address to each computer on the Ad-Hoc network. (See Box below)

### IP Address

When assigning IP Addresses to the computers on the network, please remember that the **IP Address for each computer must be in the same IP Address range as all the computers in the network**, and the subnet mask must be exactly the same for all the computers in the network.

For example: If the first computer is assigned an IP Address of 192.168.0.2 with a Subnet Mask of 255.255.255.0, then the second computer can be assigned an IP Address of 192.168.0.3 with a Subnet Mask of 255.255.255.0, etc.

**IMPORTANT: If computers or other devices are assigned the same IP Address, one or more of the devices may not be visible on the network.**

## 5. Installing the DWL-650+



### 1 Installing the DWL-650+ Drivers & Utility

**NOTE:** Do not insert the DWL-650+ Cardbus into the Cardbus slot at this point. You will be instructed in Section 2 to install the DWL-650+ Cardbus adapter.

#### Windows XP, 2000, Me, or 98 Installation:

The following screen shots are taken from Windows XP. Windows 2000, Me, and 98 will have a similar screenshots for installing the drivers.

- Turn on the laptop computer.
- Insert the D-Link AirPlus DWL-650+ Driver CD into the CD-ROM Drive.
- Click on the **Install Driver/PC Utility** bullet point on the installation screen.

## Installing the DWL-650+ Drivers and Utility

If the AutoRun function on your laptop computer does not automatically start, proceed to the steps below. If it does, proceed to Section 2.

- Go to **Start > Run > type D:\Setup.exe**
- Click **OK**

**NOTE:** The letter “D” represents the letter of the CD-ROM drive. Your CD-ROM drive may be a different drive letter.

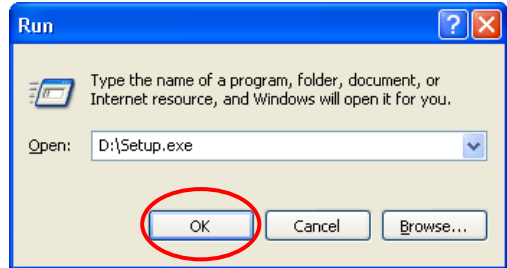


Fig. 5.1.2 Windows XP setup screen. The Windows 2000, Me, and 98 screen will look similar to Fig 5.1.2.

## 2 Installing the Drivers and Utility (continued...)

- Click **Next**

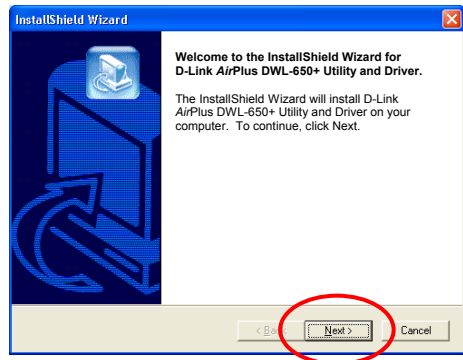
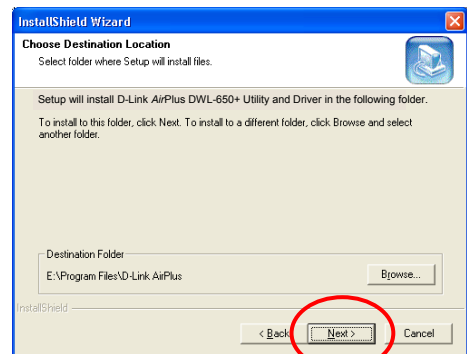


Fig. 5.2.1

- Click **Next** to install the Utility program in the default folder.



13 Fig. 5.2.2

## Installing the DWL-650+ Drivers and Utility

- Select **No, I will restart my computer later.**

- Click **Finish**

- Shut down your laptop computer.
- Insert the DWL-650+ into the Cardbus slot.
- Restart your laptop computer
- Click **Next** at the **Welcome** screen (Fig. 5.2.4)

**For Windows XP**, Fig. 5.2.5 may appear after the laptop computer restarts. Click **Continue Anyway** to finalize the installation. (This device has been successfully tested to work on Windows XP, as well as Windows 2000, Windows Me and Windows 98. Microsoft certification is pending.)

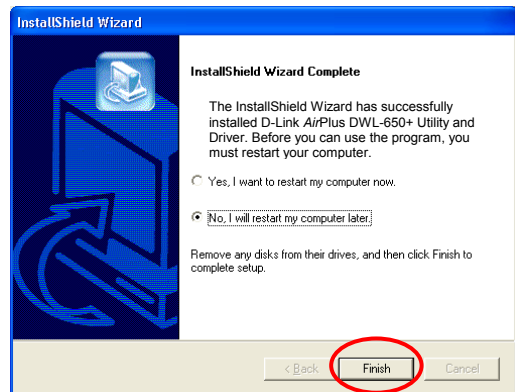


Fig. 5.2.3

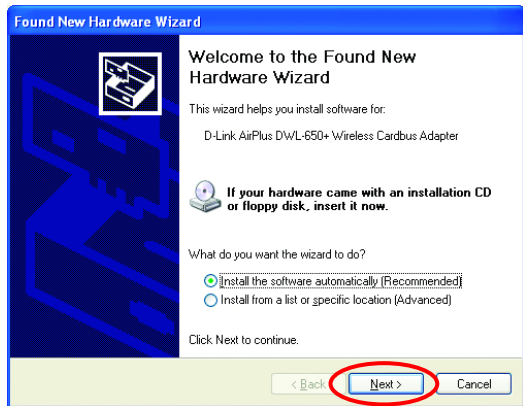


Fig. 5.2.4

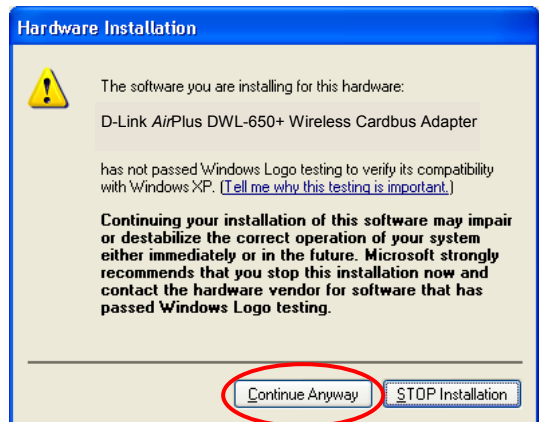


Fig. 5.2.5

## Installing the DWL-650+

**For Windows 2000**, Fig. 5.2.6 may appear after the laptop computer restarts. Select **Yes** to finalize the installation.

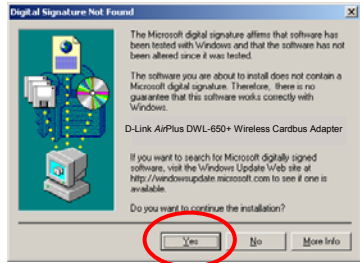


Fig. 5.2.6

Click **Finish** to complete the installation.

**For Windows Me and 98**, after the laptop computer restarts, it will ask you to reboot the computer once more to finalize the driver installation. Select **Yes** to finalize the installation.

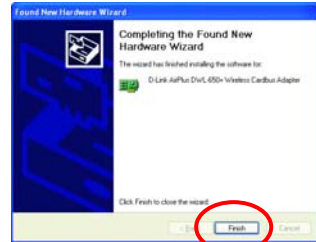


Fig. 5.2.7

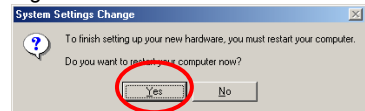


Fig. 5.2.8

**YOU HAVE COMPLETED THE INSTALLATION OF THE DRIVERS. SEE NETWORKING BASICS IN THIS MANUAL FOR INFORMATION ON SETTING UP YOUR NETWORK.**

## 6. Using the Configuration Utility

If you want to alter the default settings or optimize the performance of the DWL-650+, D-Link has included a configuration utility to do so.

*Note: Out of the box, with its default settings, the DWL-650+ will associate with D-Link AirPlus wireless routers (e.g., DI-614+) and access points (e.g., DWL-900AP+).*

After the computer restarts, the configuration utility will automatically start and the utility icon will appear in the bottom right hand corner of the screen (systray).

- Double-click on the **Configuration Utility icon** (Fig. 6.1) shown on the right.



Fig. 6.1

**Note:** If the utility icon does not appear, double-click on the **shortcut icon** (Fig. 6.2) that has been created on your desktop workspace.

After double-clicking on the icon (Fig. 6.1), the D-Link AirPlus DWL-650+ Utility window will appear.

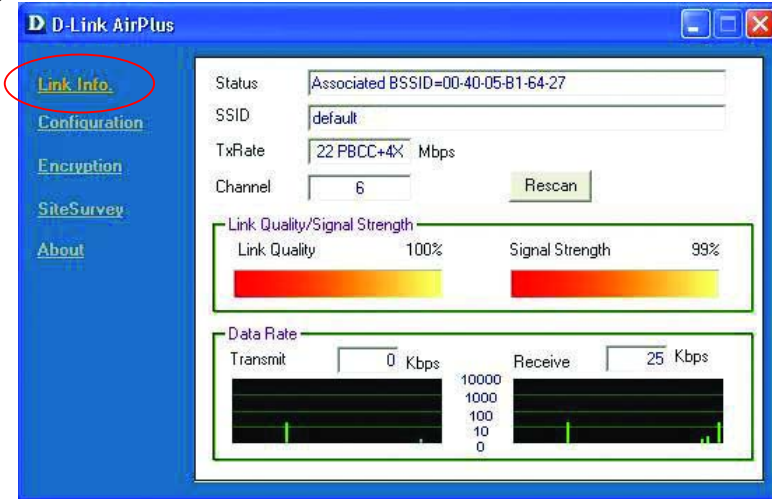


Fig. 6.2

## Configuration Utility

### Link Info

After clicking on the Configuration Utility icon, the **Link Info** screen will display the following:



**Status:** Displays the MAC Address of the Access Point that is associated with the DWL-650+.

**SSID:** The Service Set Identifier is the name assigned to the wireless network. The factory SSID setting is set to **default**.

**TxRate:** The factory setting is set to 11 Mbps; however, TxRate settings are automatically determined by the DWL-650+ depending on the distance from the access point.

**Channel:** Displays the channel information. By default, the channel is set to 6 and selection is automatically determined by the DWL-650+.

**Link Quality / Signal Strength:** Displays the Link Quality for the DWL-650+ wireless connection to the access point. The Signal Strength represents the wireless signal between the access point and the DWL-650+. The percentage coincides with the graphical bar.

**Data Rate:** Displays the statistics of data transmitted and received.

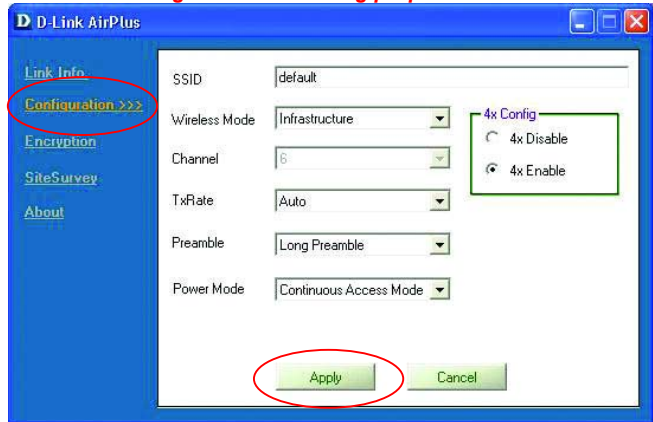
**Rescan:** Rescans the network for the Access Point with the greatest signal strength and connects the DWL-650+ automatically.



## Configuration Utility Configuration

To communicate on the network, all devices must have the same settings for the following properties:

This Configuration screen displays the default settings for the DWL-650+.



**SSID** - (Service Set Identifier) is a name that identifies a wireless network. Access Points and wireless clients attempting to connect to a specific WLAN (Wireless Local Area Network) must use the same SSID. The default setting is **default**.

**Wireless Mode** - Click on the pull-down menu; select from the following options:

**Infrastructure** - connecting the WLAN using an Access Point such as the DWL-1000AP. (The **default** setting.)

**Ad-Hoc** - wireless mode used when connecting directly to a computer equipped with a wireless adapter such as the D-Link AirPlus DWL-520 Wireless PCI adapter in a peer-to-peer environment.

**Channel** - The **default** channel setting is channel 6. However, the DWL-650+ will automatically select the channel to match the channel setting for the selected Access Point. In Ad Hoc mode, the channel must be manually set to the same channel for each wireless adapter.

**TX Rate** - Select the transmission rate on the network. 11Mbps is the **default** setting.

**Preamble** - Select **Long** or **Short Preamble**. The Preamble defines the length of the CRC block (Cyclic Redundancy Check is a common technique for detecting data transmission errors) for communication between the Access Point and the roaming wireless Network adapters. **Long Preamble** is the **default** setting. *Note: High network traffic areas should use the shorter preamble type.*

**Power Mode** - Select from three modes:

**Continuous Access Mode**-this **default** setting consumes the most power

**Maximum Power Save**-this setting consumes the least power

**Power Save**- this setting consumes a moderate amount of power

**4x Config** - Select **4x Disable** or **4x Enable**. The 4x feature increases your data throughput when 4x is enabled on both the wireless client and either the DWL-900AP+ (wireless Access Point) or the DI-614+ (wireless Router.)

Click **Apply** to save the changes.

# Configuration Utility

## Encryption

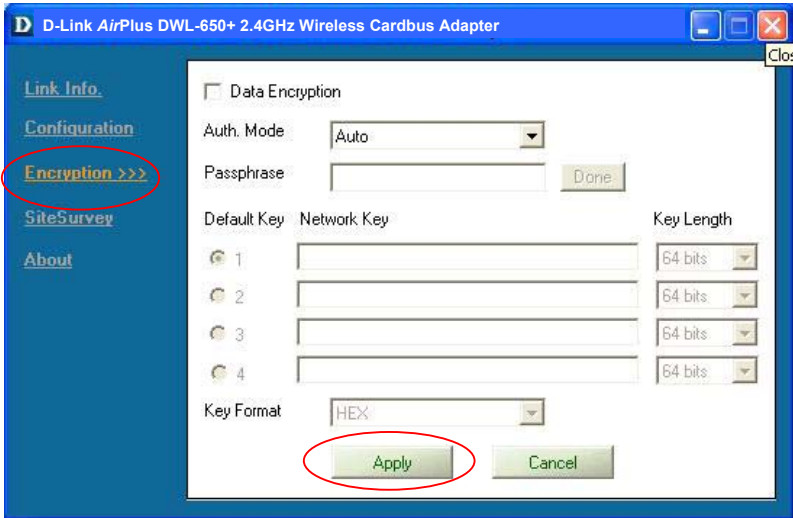


Fig. 6.5

**Please note that all devices must share the same Encryption settings to communicate on the network.**

**Data Encryption** – enable Encryption by clicking on the box. The DWL-650+ has Encryption disabled as the default setting.

**Authorization mode** – choose one of the following modes:

**Open Authentication** – communicates the key across the network

**Shared Authentication** – allows communication only with other devices with identical WEP settings

**Auto** – will automatically adjust to the Authentication mode of the wireless client

**Network Key** – enter a key in either ASCII (e.g., a word) or hexadecimal format

**Key Format** - ASCII or Hexadecimal

**Hexadecimal** digits consist of the numbers 0-9 and the letters A-F

**ASCII** (American Standard Code for Information Interchange) is a code for representing English letters as numbers from 0-127

**Key type** - select the key length, either 64, 128 or 256 bits

**Key Index** – You can create up to 4 different security keys

Click **Apply** to save the changes.

# Configuration Utility

## Site Survey

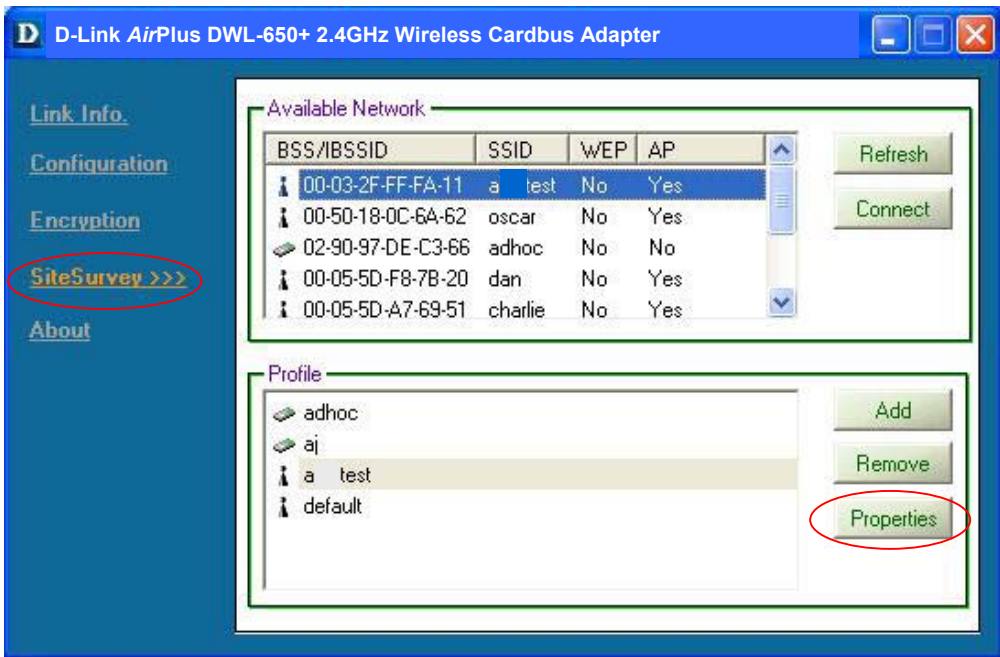


Fig. 6.6

### Available Networks

The top section of the window displays the **Available Networks**. Scroll up and down the list and highlight the network to which you wish to connect. Click on the **Connect** button.

### Profiles

In the lower half of the screen, you can manage the profiles that you have created for the wireless network at home, at the office and in public places. Scroll up and down and highlight the profile that you wish to configure. You can **ADD** or **REMOVE** a profile, or configure the **Properties** of the profile in order to connect with an available network.

### Properties

Click on **Properties** and the screen on the next page will appear.

## Configuration Utility Properties

Profile: Current Setting

Profile Name: Current Setting/Default Setting

SSID: default

Wireless Mode: Infrastructure

Channel: 6

Tx Rate: 11 Mbps

Preamble: Long Preamble

Power Mode: Continuous Access Mode

Data Encryption

Auth. Mode: Auto

Passphrase:  Done

Default Key	Network Key	Key Length
1	<input type="text"/>	64 bits
2	<input type="text"/>	64 bits
3	<input type="text"/>	64 bits
4	<input type="text"/>	64 bits

Key Format: HEX

OK Cancel

Fig. 6.7

In this window you can configure all the properties of a profile in order to connect with a network of your choice.

After you have entered your changes in this window, click **OK** to save the changes.

# Configuration Utility

## About



Fig. 6.8

The **ABOUT** screen gives you information about the **Firmware** and **Utility Versions** of the DWL-650+.

# 7. Troubleshooting

This chapter provides solutions to problems that can occur during the installation and operation of the DWL-650+ Wireless Adapter. Read the following descriptions if you are having problems. *(The examples below are illustrated in Windows XP. If you have another operating system, these solutions will still apply although the appearance on your computer screen may differ.)*

## 1. Checking the Installation of the Drivers for the Wireless Adapter

- Go to **Start**
- Right-click on **My Computer**
- Click **Properties**

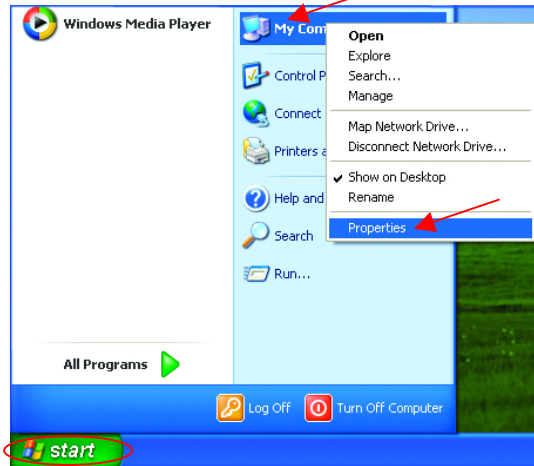


Fig. 7.1

- Select the **Hardware Tab**
- Click **Device Manager**

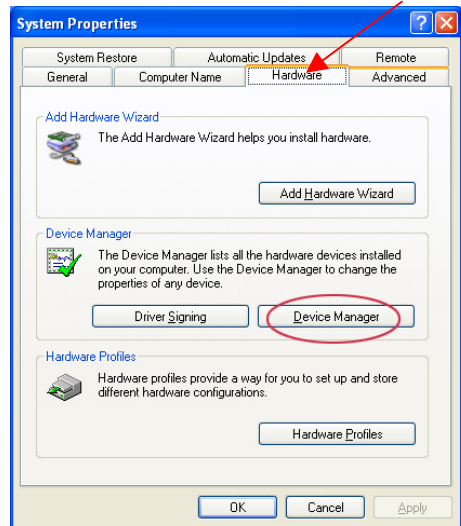


Fig. 7.2

# Troubleshooting

- Double-click on **Network Adapters**
- Right-click on **D-Link AirPlus DWL-650+ Wireless Adapter**
- Select **Properties** to check that the drivers are installed properly.

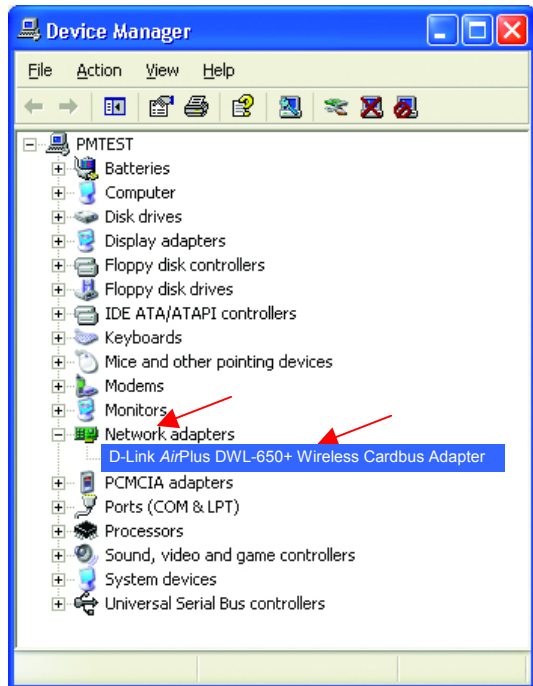


Fig. 7.3

- Look under **Device Status** to check that the device is working properly.

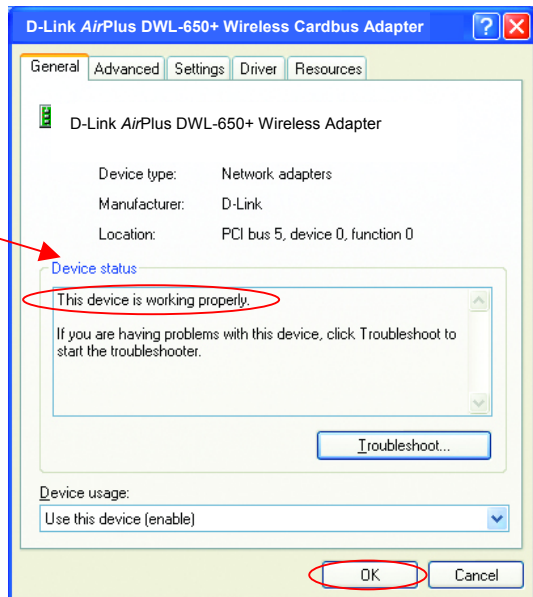


Fig. 7.4

- Click **OK**

## Troubleshooting

### 2. I cannot connect to the access point or the wireless router.

- Make sure that the SSID on the DWL-650+ Cardbus adapter is exactly the same as the SSID on the Access Point or wireless router.
- Move the DWL-650+ and Access Point or Wireless router into the same room and then test the wireless connection.
- Disable all security settings. (WEP, MAC Address Control, AES)
- Make sure that the AP or wireless router is not locked down to a different frequency
- Turn off your Access Point and the computer with the DWL-650+. Turn on the Access Point, and then turn on the computer with the DWL-650+.
- Refresh the DWL-650+ *AirPlus* Utility

### 3. The DWL-650+ Power and Link lights are not on.

- Check to see if the DWL-650+ Cardbus adapter is firmly inserted into the Cardbus slot of your laptop computer.

### 4. I forgot my Encryption key.

- Reset the Access Point to its factory default settings and restore the DWL-650+ Wireless Cardbus Adapter to the factory default settings. (The default settings are listed in the **Using the Configuration Utility** section in this manual.)

### 5. The computer does not recognize the DWL-650+ Wireless Adapter.

- Make sure that the DWL-650+ Wireless Adapter is properly seated in the computer's Cardbus slot.
- If Windows does not detect the hardware upon insertion of the adapter, make sure to completely remove drivers that were previously loaded. To remove the drivers, do the following:
  - A. Under **Tools**> select **Folder Options...**> select **View** > under **Hidden files and folders** > select **Show hidden files and folders**
  - B. Uncheck **Hide extension for known file types** > click on **Apply**



- C. Search for the files **TIACXLN.INF** and **TIACXLN.SYS**. Remove these files from the **INF** and **SYSTEM32** (DRIVERS) folders in the Windows directory. Note: Windows XP and Windows 2000 will rename **.inf** files that have not received WHQL certification into **oem.inf** files (e.g., **oem1.inf**.)

## 6. The computer with the DWL-650+ installed is unable to connect to the wireless network and/or the Internet.

- Check that the LED indicators for the broadband modem are indicating normal activity. If not, there may be a problem with the broadband connection.
- Check that the LED indicators on the wireless router are functioning properly. If not, check that the AC power and Ethernet cables are firmly connected.
- Check that the IP Address, subnet mask, gateway, and DNS settings are correctly entered for the network
- In **Infrastructure** mode, make sure the same **Service Set Identifier (SSID)** is specified on the settings for the wireless clients and access points. The **SSID** factory default setting for the D-Link *AirPlus* products is **default**. (Double-click on the WLAN icon in the taskbar. The **Link Info** screen will display the SSID setting.)
- In **Ad-Hoc** mode, both wireless clients will need to have the same **SSID**. Please note that it might be necessary to set up one client to establish a **BSS (Basic Service Set)** and wait briefly before setting up other clients. This prevents several clients from trying to establish a **BSS** at the same time, which can result in multiple singular **BSSs** being established, rather than a single **BSS** with multiple clients associated to it.
- Check that the **Network Connection** for the wireless client is configured properly. Select **AP (Infrastructure)** when connecting to an access point and select **Ad-Hoc mode** when connecting without an access point. Double-click on the **WLAN icon** in the taskbar > click on **Configuration** to change the settings for the wireless adapter.
- If **Security** is enabled, make sure that the correct encryption keys are entered on both the DWL-650+ and the access point. Double-click on the **WLAN** icon in the taskbar > click **Encryption**. Check to see

that the key selected is set to the same key as other devices on the network.

## 7. How can I troubleshoot distance issues using the DWL-650+.

- Move the DWL-650+ and Access Point or Wireless router into the same room and then test the wireless connection.
- Change the channel of the Access Point.
- Move devices within the line of sight

## 8. How do I use the 4x feature?

- In the Configuration Utility, Click **Configuration**. Check the **4x Enable** box.
- To use the 4x feature, you must use a 4x-enabled DWL-900AP+ Wireless Access Point or a 4x-enabled DI-614+ Wireless Broadband Router in conjunction with the 4x-enabled DWL-520+.

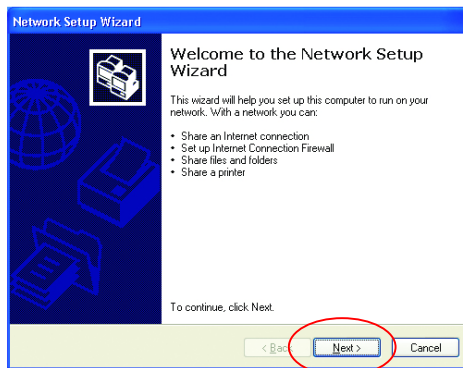
# 8. Networking Basics

## *Using the Network Setup Wizard in Windows XP*

In this section you will learn how to establish a network at home or work, using **Microsoft Windows XP**.

*Note: Please refer to websites such as <http://www.homenethelp.com> and <http://www.microsoft.com/windows2000> for information about networking computers using Windows 2000, ME or 98.*

Go to **Start > Control Panel > Network Connections**  
Select **Set up a home or small office network**



When this screen appears, click **Next**.

## Networking Basics

### Using the Network Setup Wizard in Windows XP

Please follow all the instructions in this window:

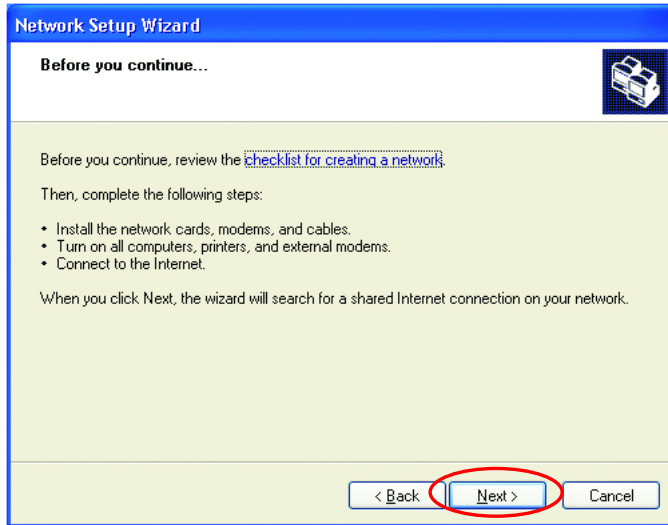


Fig. 8.2

Click **Next**

In the following window, select the best description of your computer. If your computer connects to the Internet through a gateway/router, select the second option as shown.

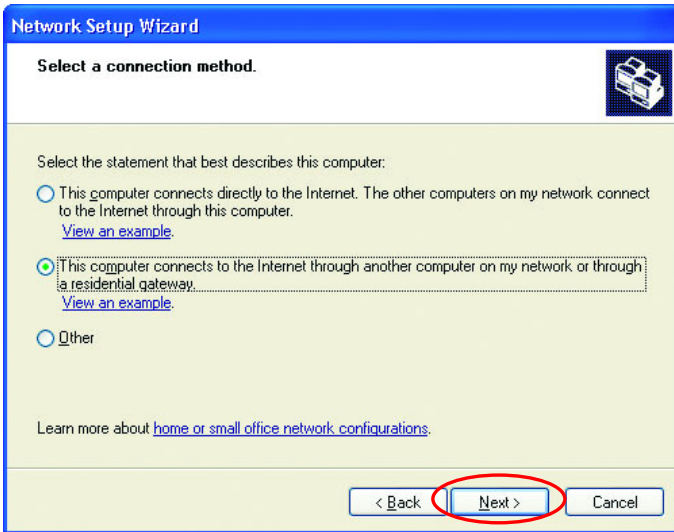
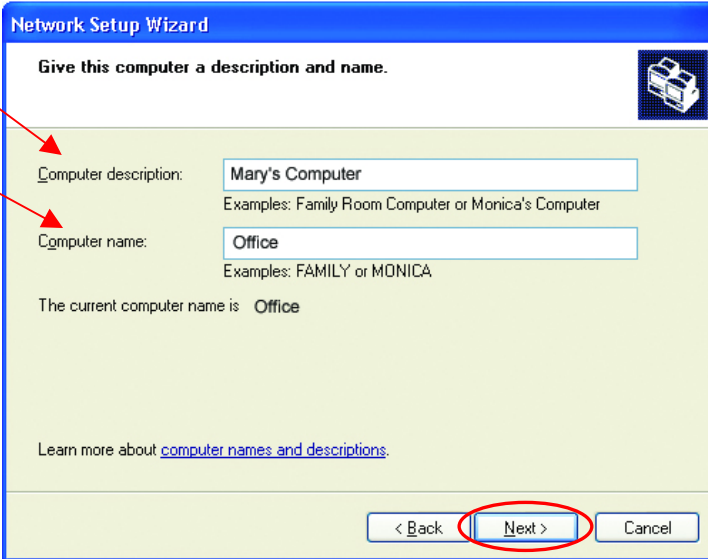


Fig. 8.3

Click **Next**

## Networking Basics

Enter a **Computer description** and a **Computer name**.

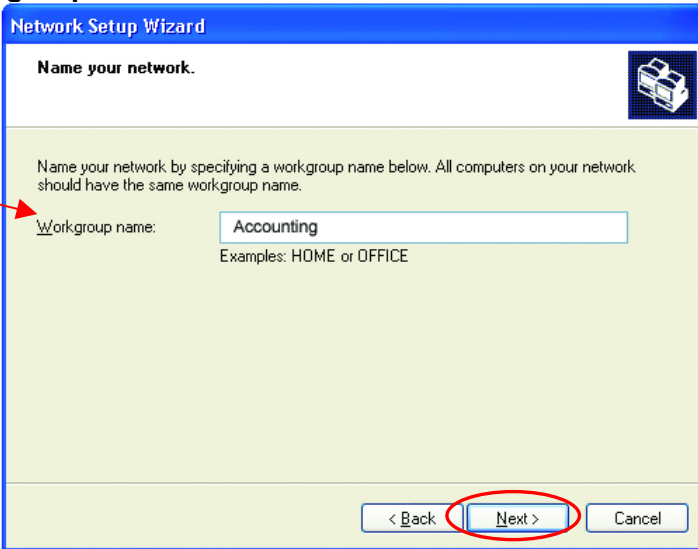


The screenshot shows the 'Network Setup Wizard' window with the title 'Give this computer a description and name.' The window contains two text input fields: 'Computer description' with the value 'Mary's Computer' and 'Computer name' with the value 'Office'. Below the 'Computer name' field, it says 'The current computer name is Office'. At the bottom, there are three buttons: '< Back', 'Next >', and 'Cancel'. The 'Next >' button is circled in red. Two red arrows point to the 'Computer description' and 'Computer name' fields.

Fig. 8.4

Click **Next**

Enter a **Workgroup** name. All computers on your network should have the same **Workgroup** name.



The screenshot shows the 'Network Setup Wizard' window with the title 'Name your network.' The window contains a text input field for 'Workgroup name' with the value 'Accounting'. Below the field, it says 'Examples: HOME or OFFICE'. At the bottom, there are three buttons: '< Back', 'Next >', and 'Cancel'. The 'Next >' button is circled in red. A red arrow points to the 'Workgroup name' field.

Fig. 8.5

Click **Next**

## Networking Basics

Please wait while the wizard applies the changes.

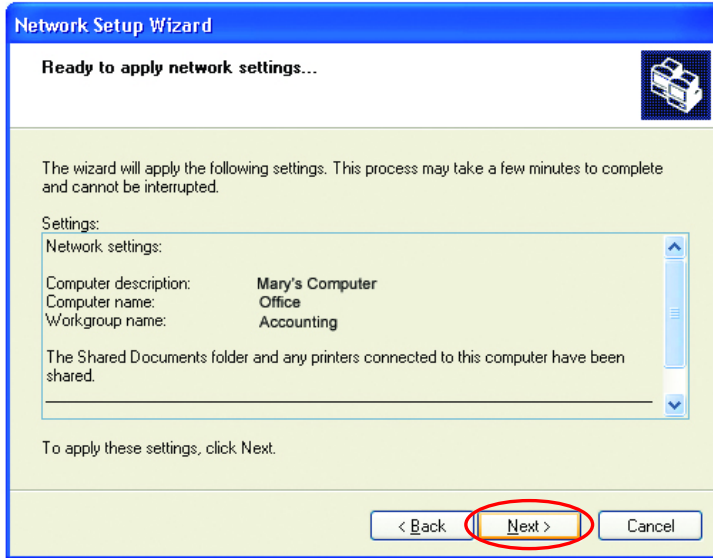


Fig. 8.6

When the changes are complete, click **Next**.

Please wait while the wizard configures the computer.  
This may take a few minutes.

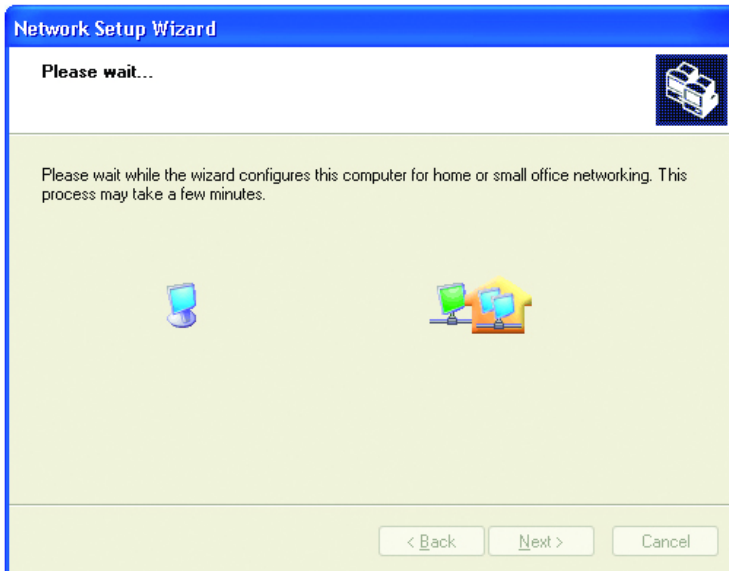


Fig. 8.7

## Networking Basics

In the window below, select the best option. In this example, **Create a Network Setup Disk** has been selected. You will run this disk on each of the computers on your network. Click **Next**.

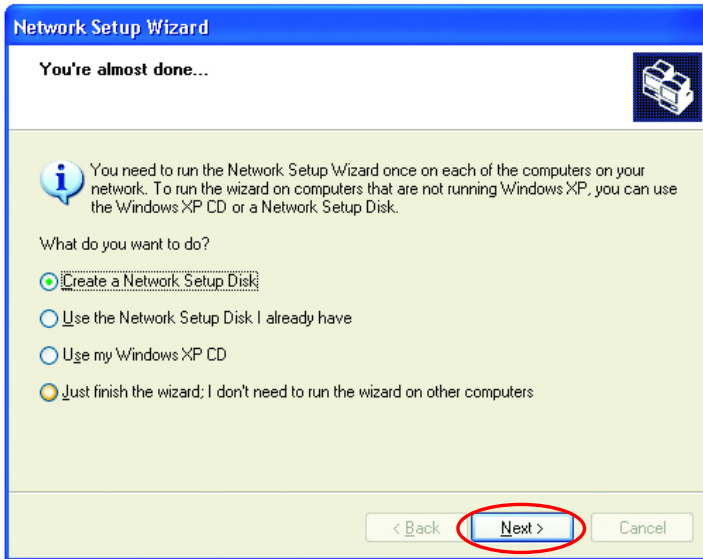


Fig. 8.8

Insert a disk into the Floppy Disk Drive, in this case drive **A:**

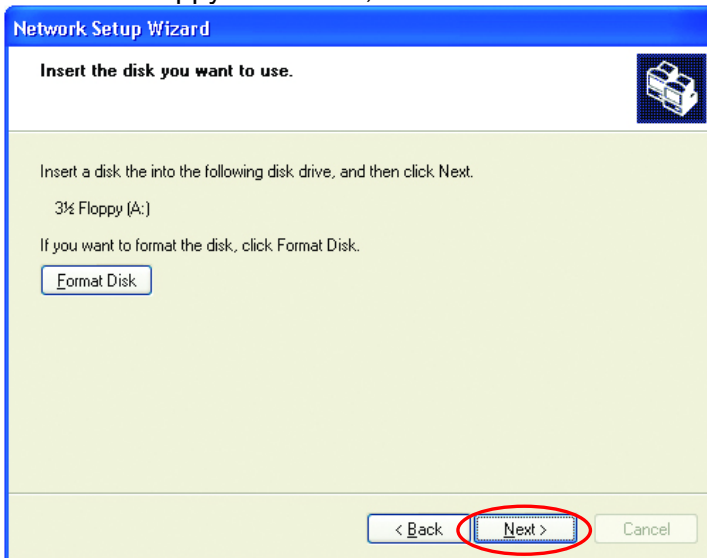


Fig. 8.9

Format the disk if you wish, and click **Next**.

## Networking Basics

Please wait while the wizard copies the files.



Fig. 8.10

Please read the information under **Here's how** in the screen below. After you complete the **Network Setup Wizard** you will use the **Network Setup Disk** to run the **Network Setup Wizard** once on each of the computers on your network. To continue, click **Next**

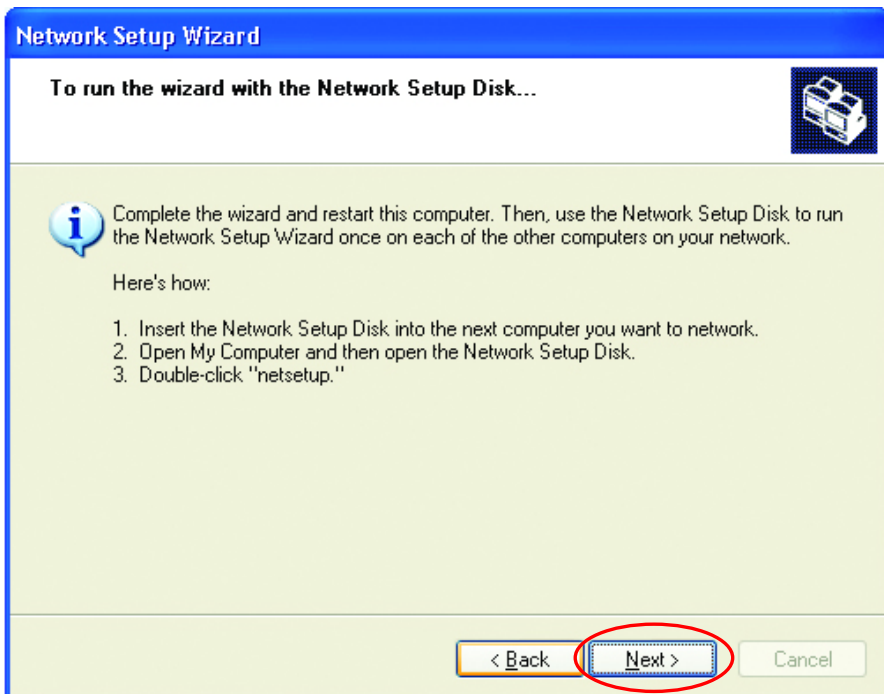


Fig. 8.11

## Networking Basics

Please read the information on this screen, then click **Finish** to complete the **Network Setup Wizard**.



Fig. 8.12

The new settings will take effect when you restart the computer. Click **Yes** to restart the computer.

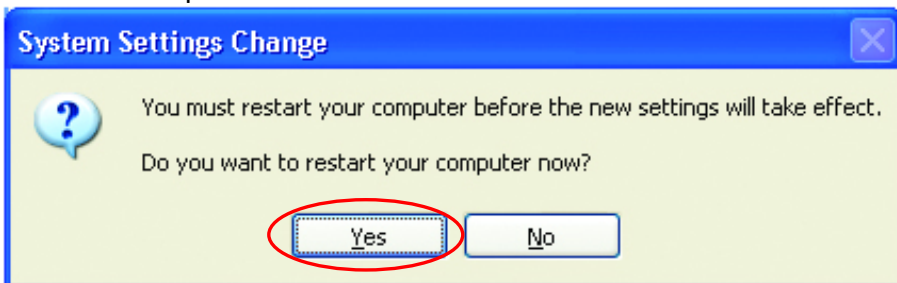


Fig. 8.13

You have completed configuring this computer. Next, you will need to run the **Network Setup Disk** on all the other computers on your network. After running the **Network Setup Disk** on all your computers, your new wireless network will be ready to use.



## Networking Basics

### Naming your Computer

To name your computer, please follow these directions:

In **Windows XP**:

- Click **Start** (in the lower left corner of the screen)
- Right-click on **My Computer**
- Select **Properties** and click

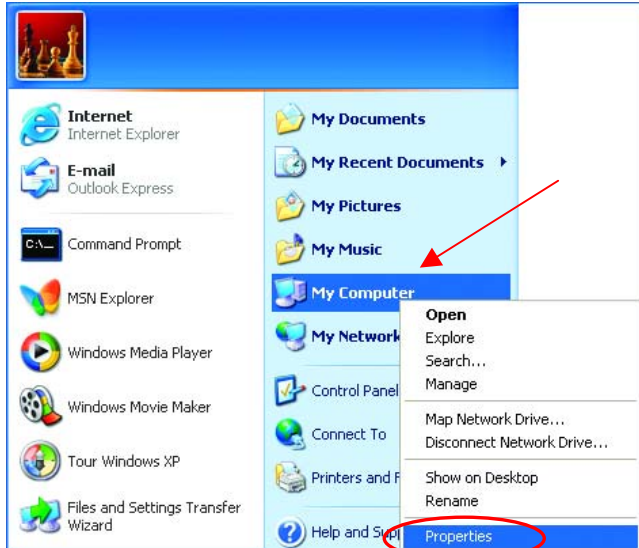


Fig. 8.14

- Select the **Computer Name** Tab in the **System Properties** window.

*You may enter a **Computer description** if you wish; this field is optional.*

To rename the computer or join a domain,

- Click **Change**

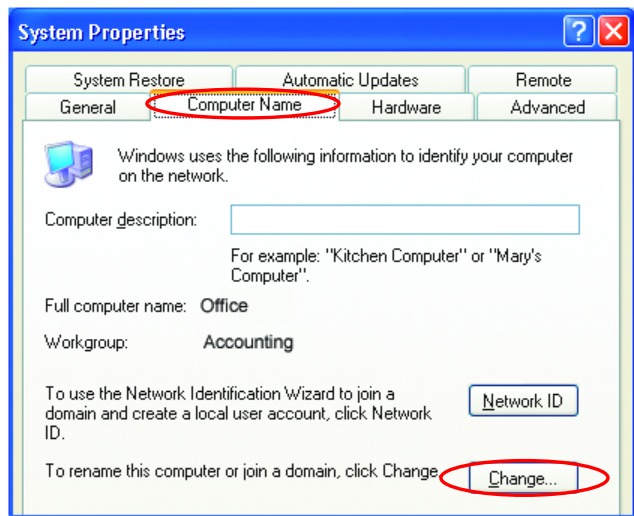


Fig. 8.15

## Networking Basics

### Naming your Computer

- In this window, enter the **Computer name**.
- Select **Workgroup** and enter the name of the **Workgroup**.
- All computers on your network must have the same **Workgroup** name.
- Click **OK**

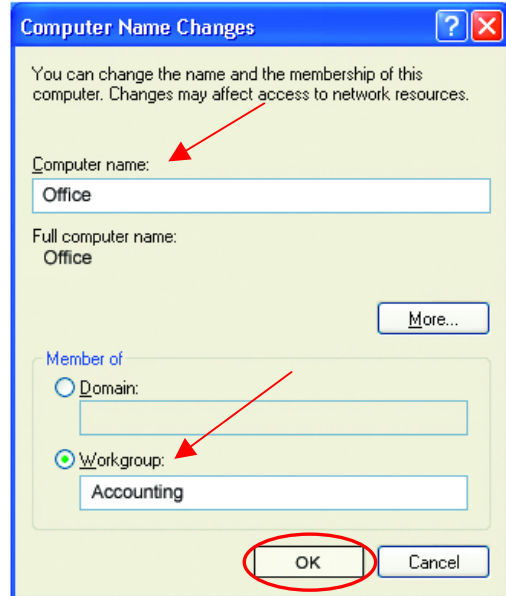


Fig. 8.16

## Checking the IP Address in Windows XP/2000

Go to **Start > All Programs > Accessories > Command Prompt**

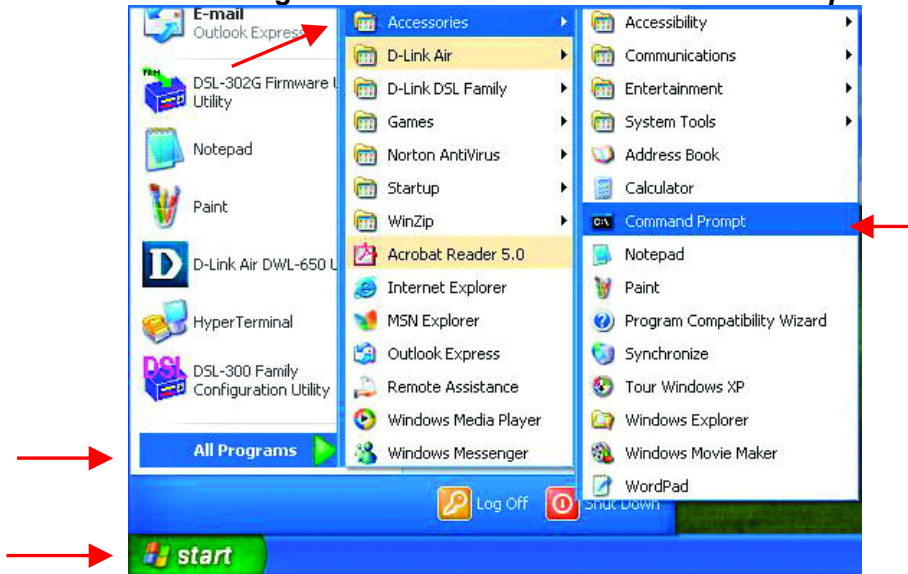


Fig. 8.17

## Networking Basics

### Checking the IP Address in Windows XP/2000

Type **Command**

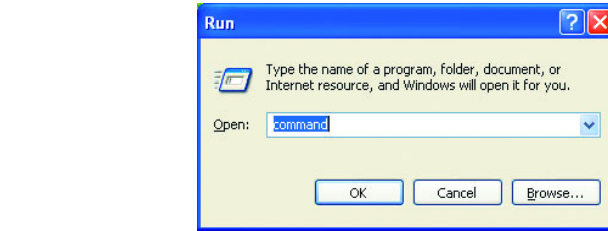


Fig. 8.18

Type **ipconfig /all** at the prompt. All the configuration settings are displayed as shown below.

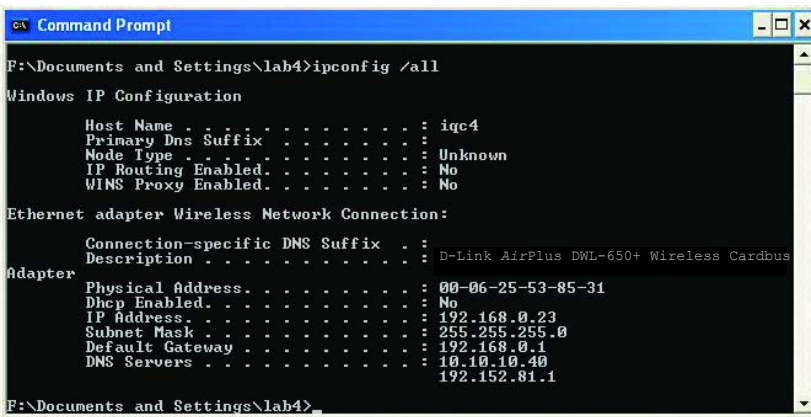


Fig. 8.19

Type **ipconfig /renew** at the prompt to get a new IP Address, shown below.

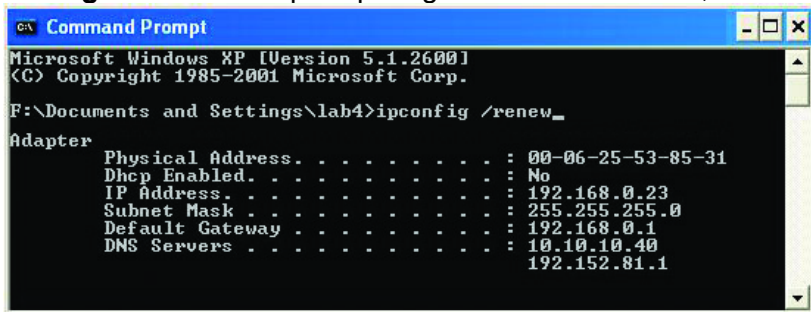


Fig. 8.20

(Windows 98/ME users: go to **Start > Run**. Type **Command**. Type **winipcfg** at the prompt. Click **Release and Renew** to obtain a new IP Address.)

## Networking Basics

### Assigning a Static IP Address in Windows XP/2000

*Note: Residential Gateways/Broadband Routers will automatically assign IP Addresses to the computers on the network, using DHCP (Dynamic Host Configuration Protocol) technology. If you are using a DHCP-capable Gateway/Router you will not need to assign Static IP Addresses.*

*If you are not using a DHCP capable Gateway/Router, or you need to assign a Static IP Address, please follow these instructions:*

*(The following illustrations are shown using Windows XP, other Operating Systems will be similar.)*

- Go to **Start**
- Double-click on **Control Panel**

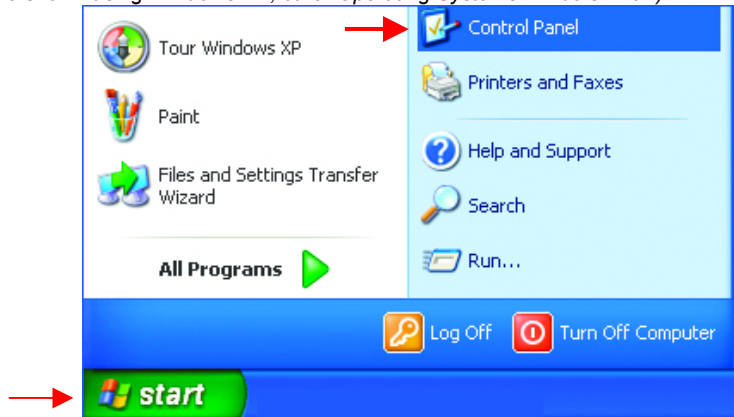


Fig. 8.21

- Double-click on **Network Connections**

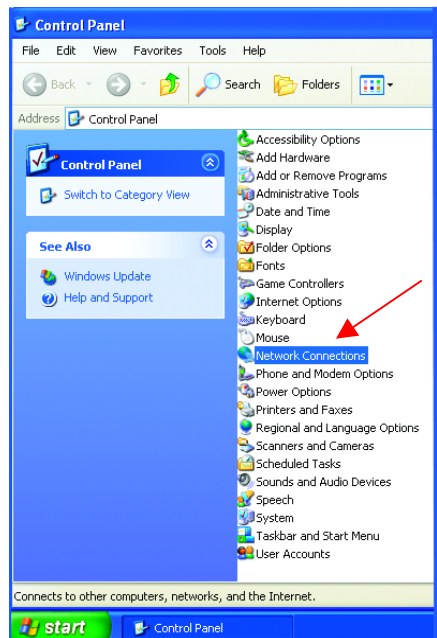


Fig. 8.22

## Networking Basics

### Assigning a Static IP Address (continued)

- Right-click on **Local Area Connections**.
- Click **Properties**

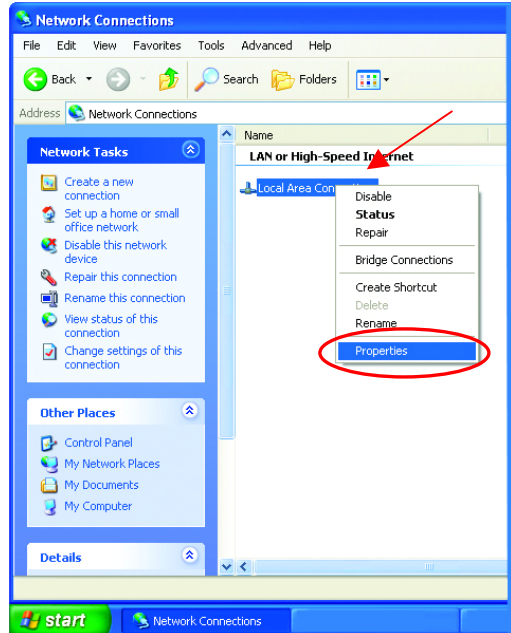


Fig. 8.23

- Highlight **Internet Protocol (TCP/IP)**
- Click **Properties**

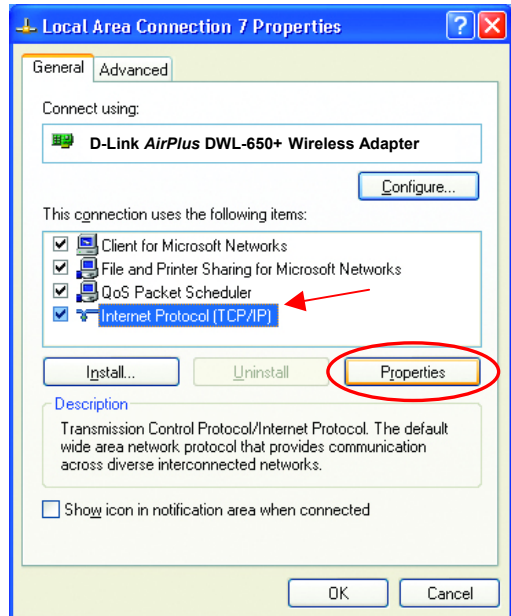


Fig. 8.24

## Networking Basics

### Assigning a Static IP Address (continued)

- Select **Use the following IP address** in the **Internet Protocol (TCP/IP) Properties** window.
- **Input your IP address and subnet mask.** (The IP Addresses on your network must be within the same range. For example, if one computer has an IP Address of 192.168.0.2, the other computers should have IP Addresses that are between 192.168.0.3 and 192.168.0.254. No two computers can have the same IP Address. The subnet mask must be the same for all the computers on the network.)

**IP Address:**

e.g., 192.168.0.2

**Subnet Mask:**

255.255.255.0

**Default Gateway:** Enter the LAN IP address of the Wireless Router. (D-Link wireless routers have a LAN IP address of 192.168.0.1)

- Select **Use the following DNS server address.** Enter the LAN IP address of the Wireless Router. (D-Link wireless routers have a LAN IP address of 192.168.0.1)

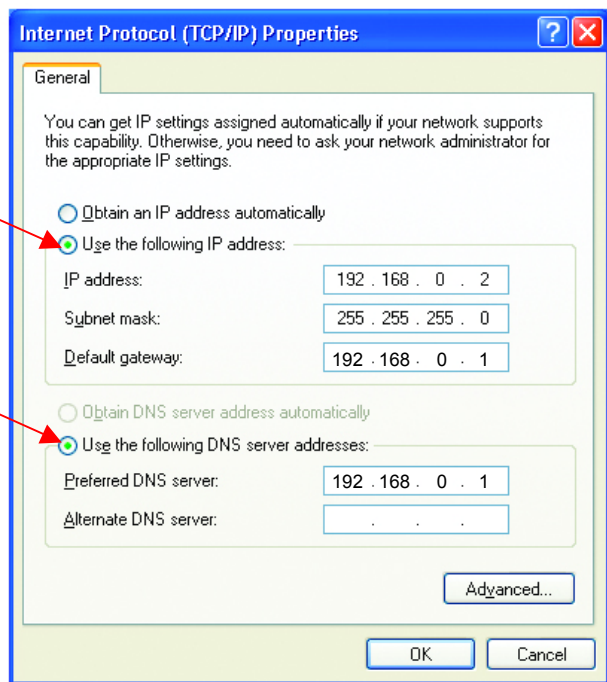


Fig. 8.25

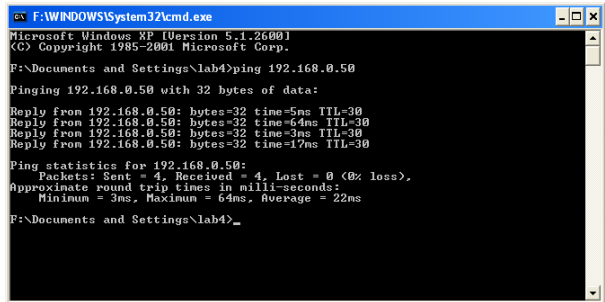
- Click **OK**

You have completed the assignment of a Static IP Address. (You do not need to assign a Static IP Address if you have a DHCP-capable Gateway/Router.)

# Checking the Wireless Connection by Pinging

## For Windows XP and 2000:

Go to **Start > Run > type cmd**. A window similar to *Fig. 8.35* will appear. Type **ping xxx.xxx.xxx.xxx**, where **xxx** is the **IP address** of the Wireless Router or Access Point. A good wireless connection will show four replies from the wireless router or access point, as shown.

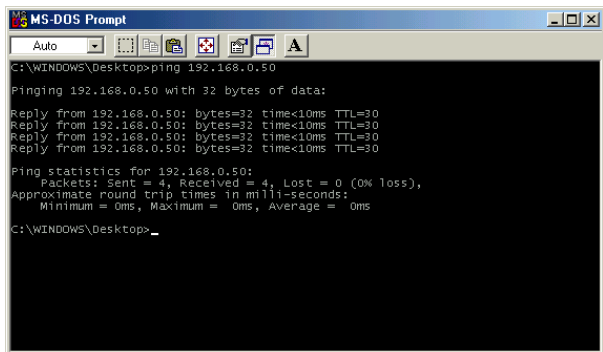


```
ex F:\WINDOWS\system32\cmd.exe
Microsoft Windows XP [Version 5.1.2600]
(C) Copyright 1985-2001 Microsoft Corp.
F:\Documents and Settings\lab4>ping 192.168.0.50
Pinging 192.168.0.50 with 32 bytes of data:
Reply from 192.168.0.50: bytes=32 time=5ms TTL=30
Reply from 192.168.0.50: bytes=32 time=64ms TTL=30
Reply from 192.168.0.50: bytes=32 time=3ms TTL=30
Reply from 192.168.0.50: bytes=32 time=17ms TTL=30
Ping statistics for 192.168.0.50:
    Packets: Sent = 4, Received = 4, Lost = 0 (0% loss),
    Approximate round trip times in milliseconds:
        Minimum = 3ms, Maximum = 64ms, Average = 22ms
F:\Documents and Settings\lab4>_
```

Fig. 8.26

## For Windows Me and 98:

Go to **Start > Run > type command**. A window similar to *Fig. 8.36* will appear. Type **ping xxx.xxx.xxx.xxx**, where **xxx** is the **IP address** of the Wireless Router or Access Point. A good wireless connection will show four replies from the wireless router or access point, as shown.



```
MS-DOS Prompt
Auto
C:\WINDOWS\Desktop>ping 192.168.0.50
Pinging 192.168.0.50 with 32 bytes of data:
Reply from 192.168.0.50: bytes=32 time<10ms TTL=30
Reply from 192.168.0.50: bytes=32 time<10ms TTL=30
Reply from 192.168.0.50: bytes=32 time<10ms TTL=30
Reply from 192.168.0.50: bytes=32 time<10ms TTL=30
Ping statistics for 192.168.0.50:
    Packets: Sent = 4, Received = 4, Lost = 0 (0% loss),
    Approximate round trip times in milli-seconds:
        Minimum = 0ms, Maximum = 0ms, Average = 0ms
C:\WINDOWS\Desktop>_
```

Fig. 8.27

## Adding and Sharing Printers in Windows XP

After you have run the **Network Setup Wizard** on all the computers in your network (please see the **Network Setup Wizard** section at the beginning of **Networking Basics**,) you can use the **Add Printer Wizard** to add or share a printer on your network.

Whether you want to add a **local printer** (a printer connected directly to one computer,) share an **LPR printer** (a printer connected to a print server) or share a **network printer** (a printer connected to your network through a Gateway/Router,) use the **Add Printer Wizard**. Please follow the directions below:

***First, make sure that you have run the Network Setup Wizard on all of the computers on your network.***

We will show you 3 ways to use the **Add Printer Wizard**

- 1. Adding a local printer**
- 2. Sharing an network printer**
- 3. Sharing an LPR printer**



## Networking Basics

### Adding a local printer

(A printer connected directly to a computer)

A printer that is not shared on the network and is connected directly to one computer is called a **local printer**. If you do not need to share your printer on a network, follow these directions to add the printer to one computer.

- Go to **Start** > **Printers and Faxes**



Fig. 8.28

- Click on **Add a printer**

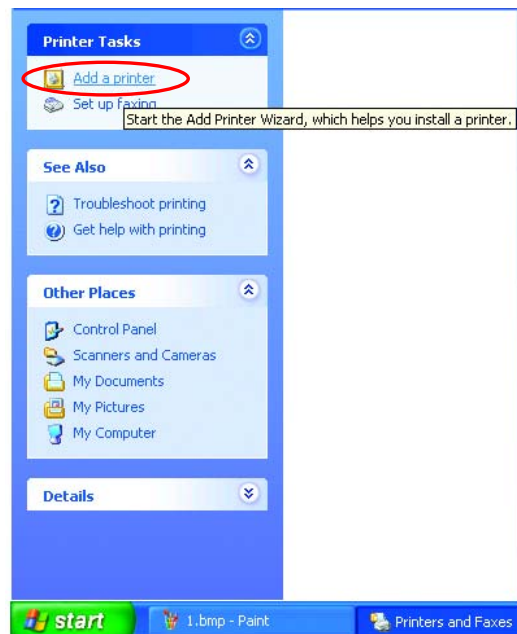


Fig. 8.29

# Networking Basics

## Adding a local printer

- Click **Next**

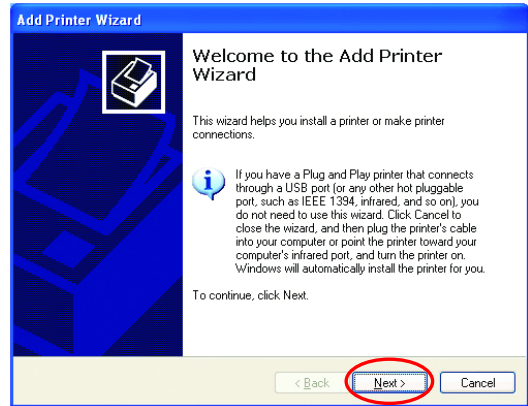


Fig. 8.30

- Select **Local printer attached to this computer**
- *(Deselect **Automatically detect and install my Plug and Play printer** if it has been selected.)*
- Click **Next**

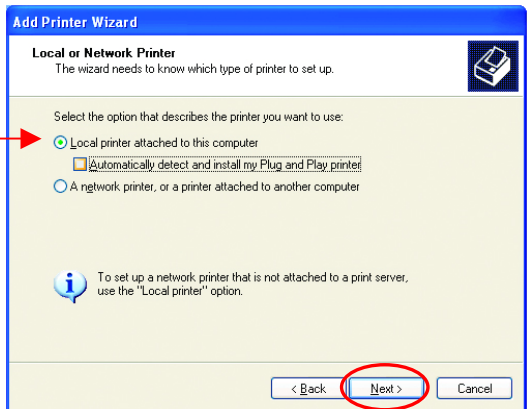


Fig. 8.31

- Select **Use the following port:**
- From the pull-down menu **select the correct port** for your printer

*(Most computers use the **LPT1:** port, as shown in the illustration.)*

- Click **Next**

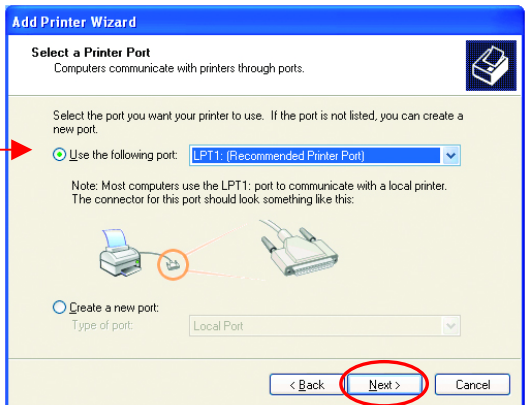


Fig. 8.32

## Networking Basics

### Adding a local printer

- Select and highlight the correct driver for your printer.

- Click **Next**

*(If the correct driver is not displayed, insert the CD or floppy disk that came with your printer and click **Have Disk**.)*

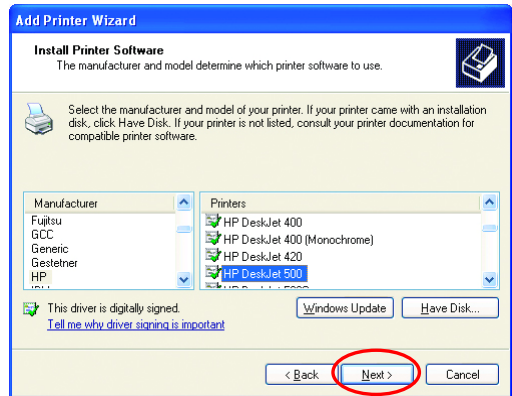


Fig. 8.33

- At this screen, you can change the name of the printer (optional.)

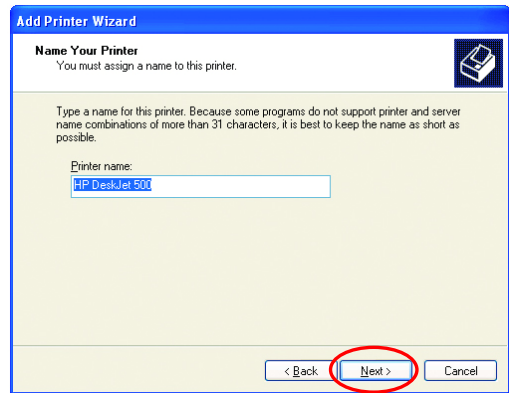


Fig. 8.34

- Click **Next**

- Select **Yes**, to print a test page. A successful printing will confirm that you have chosen the correct driver.

- Click **Next**

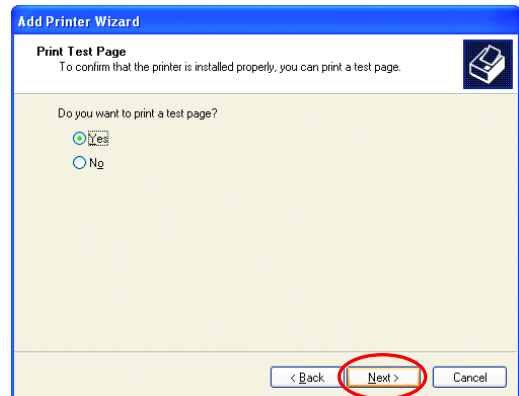


Fig. 8.35

## Networking Basics

### Adding a local printer

This screen gives you information about your printer.

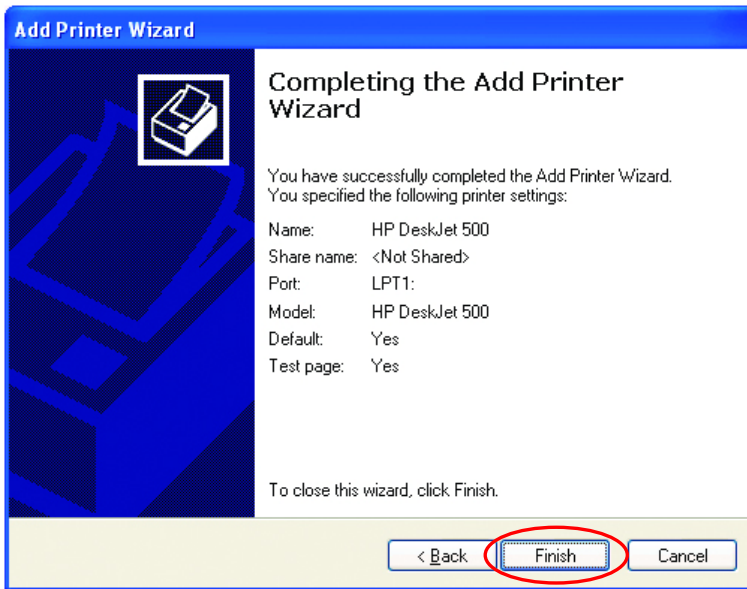


Fig. 8.36

Click **Finish**

When the test page has printed,

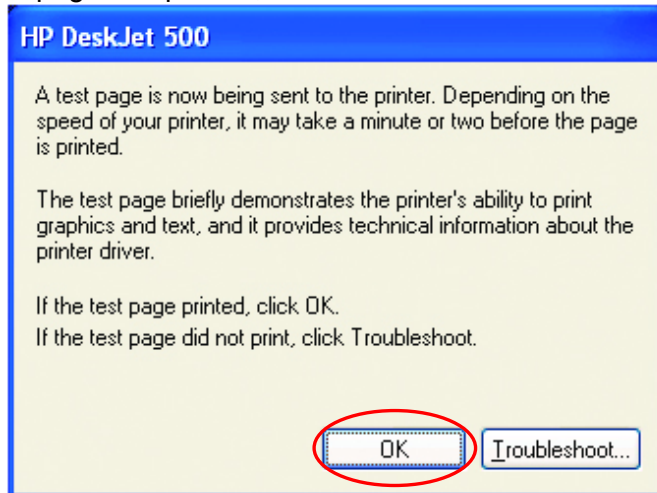


Fig. 8.37

Click **OK**

## Networking Basics

### Adding a local printer

- Go to **Start> Printers and Faxes**

A successful installation will display the printer icon as shown at right.

You have successfully added a local printer.

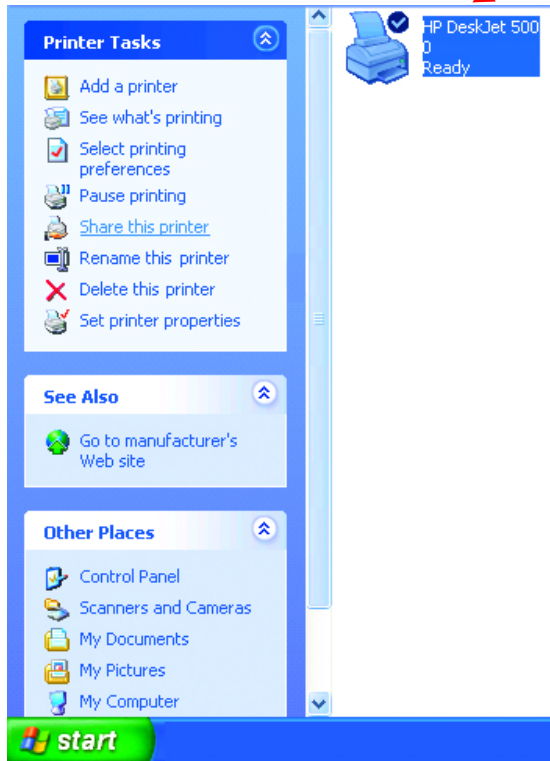


Fig. 8.38

### Setting up a Network Printer

After you have run the **Network Setup Wizard** on all the computers on your network, you can run the **Add Printer Wizard** on all the computers on your network. Please follow these directions to use the **Add Printer Wizard** to share the printer on your network:

- Go to **Start> Printers and Faxes**

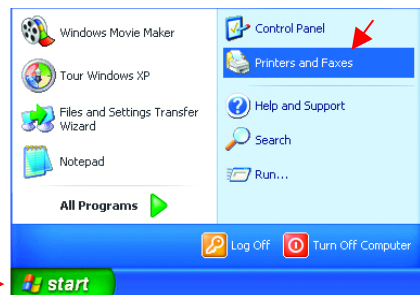


Fig. 8.39

# Networking Basics

## Setting up a network printer

- Click on **Add a Printer**

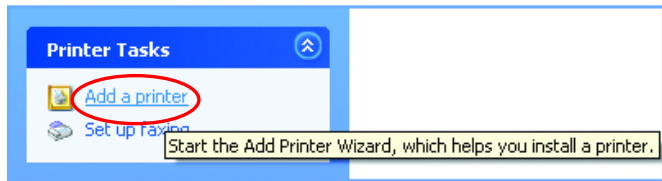


Fig. 8.40

- Click **Next**

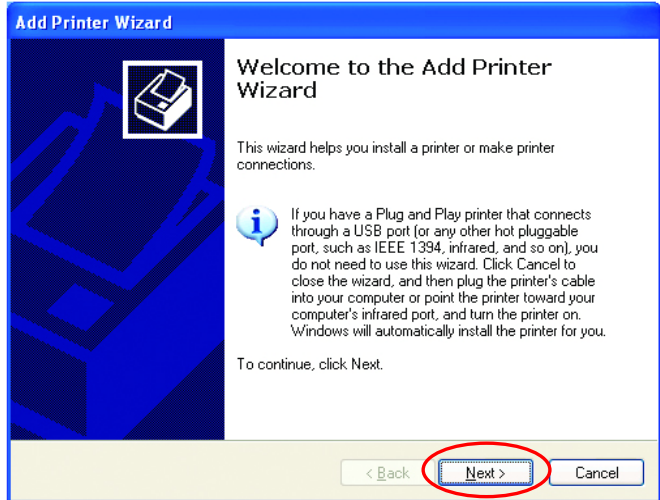


Fig. 8.41

- Select **Network Printer**

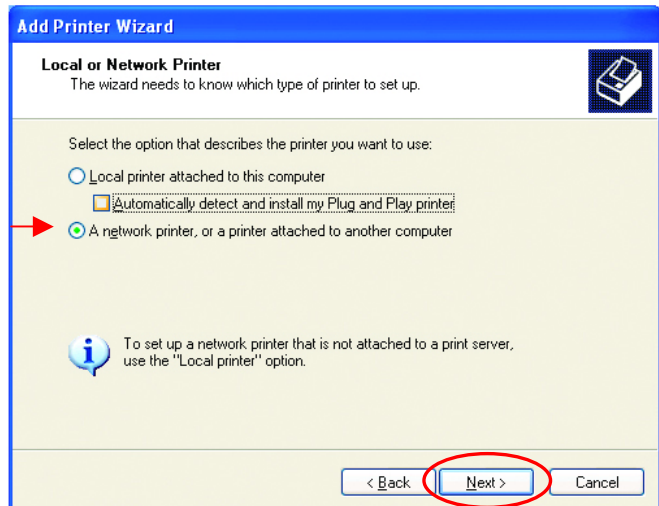


Fig. 8.42

- Click **Next**

# Networking Basics

## Setting up a network printer

- Select **Browse for a printer**

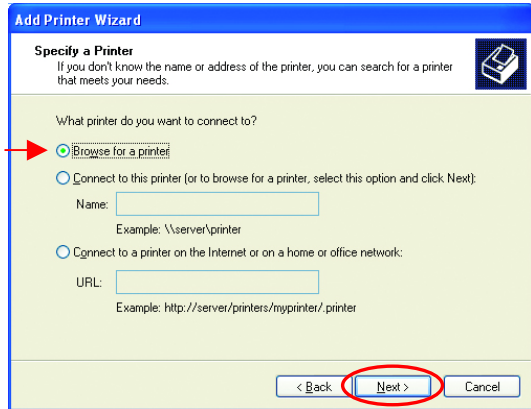


Fig. 8.43

- Click **Next**

- Select the printer you would like to share.

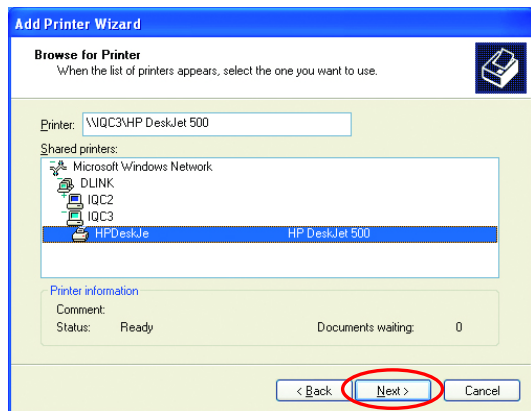


Fig. 8.44

- Click **Next**

- Click **Finish**

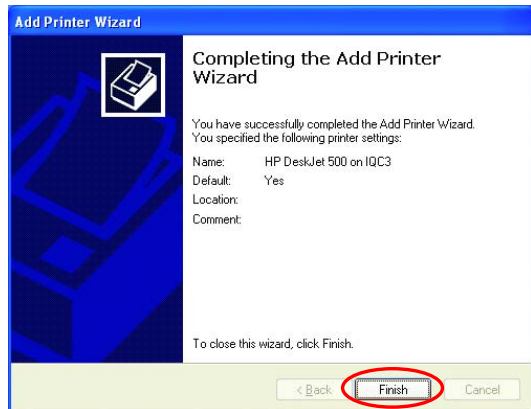


Fig. 8.45

## Networking Basics

### Setting up a network printer

To check for proper installation:

- Go to **Start> Printers and Faxes**

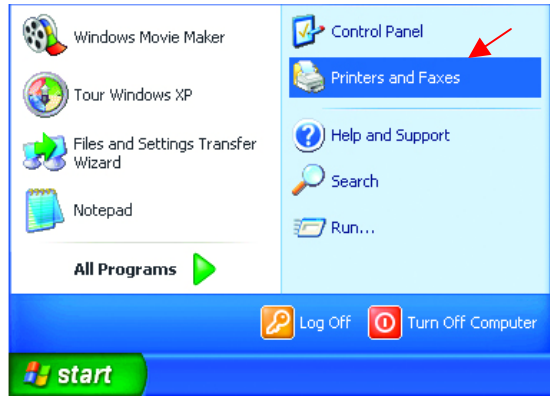


Fig. 8.46

*The printer icon will appear at right, indicating proper installation.*

*You have completed adding the printer.*

To share this printer on your network:

- Remember the **printer name**
- Run the **Add Printer Wizard** on all the computers on your network.
- Make sure you have already run the **Network Setup Wizard** on all the network computers.

After you run the **Add Printer Wizard** on all the computers in the network, you can share the printer.

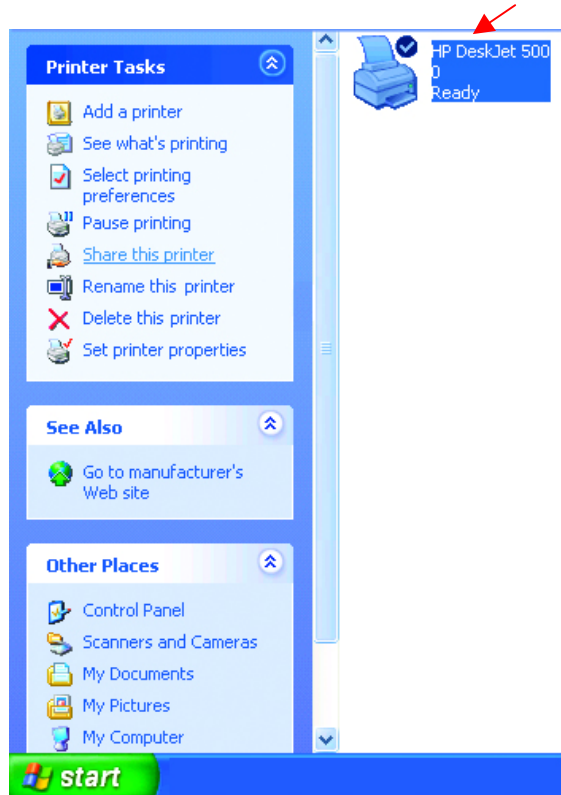


Fig. 8.47



## Networking Basics

### Setting up an LPR printer

To share an **LPR printer** (using a print server,) you will need a **Print Server** such as the **DP-101P+**. Please make sure that you have run the **Network Setup Wizard** on all the computers on your network. To share an **LPR printer**, please follow these directions:

- Go to **Start> Printers and Faxes**
- Click on **Add a Printer**

The screen to the right will display.

- Click **Next**

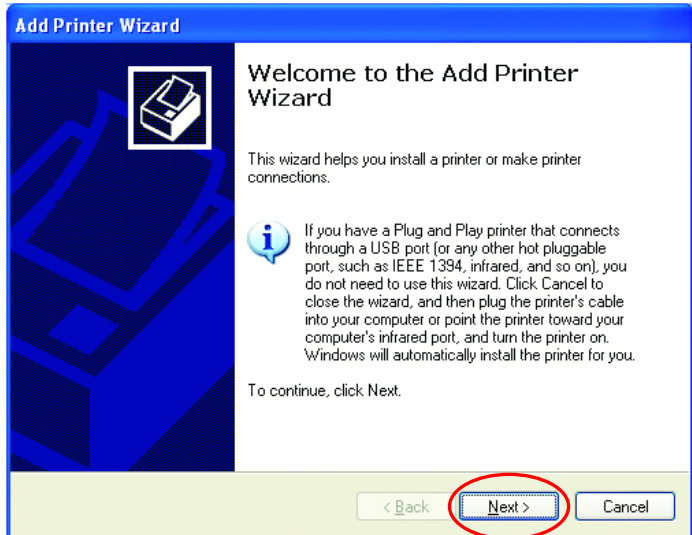


Fig. 8.48

- Select **Local Printer**

- Click **Next**

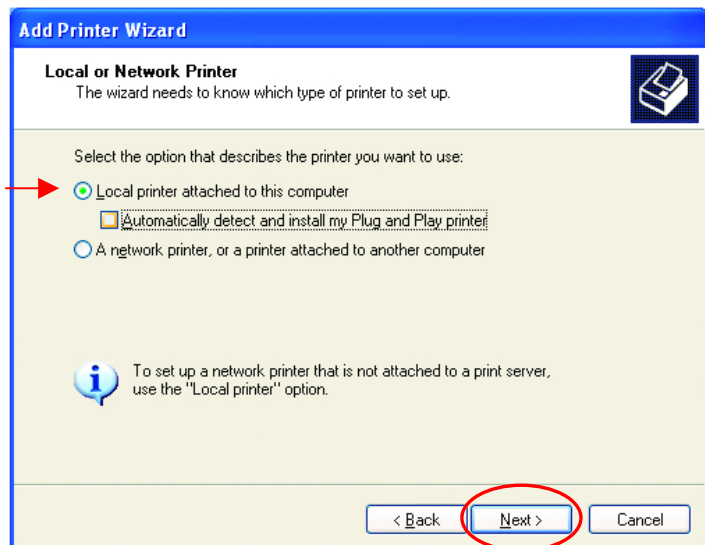


Fig. 8.49

# Networking Basics

## Setting up an LPR printer

- Select **Create a new port**
- From the pull-down menu, select **Standard TCP/IP Port**, as shown.

- Click **Next**

- Please read the instructions on this screen.

- Click **Next**

- Enter the **Printer IP Address** and the **Port Name**, as shown.

- Click **Next**

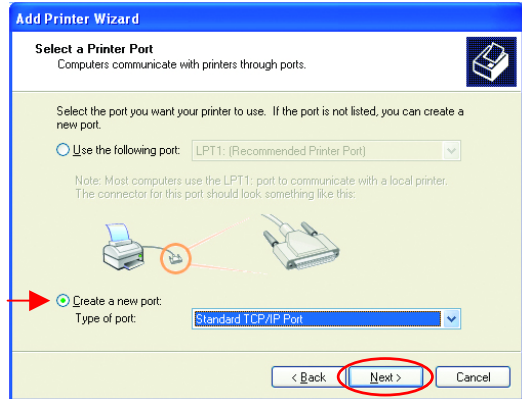


Fig. 8.50

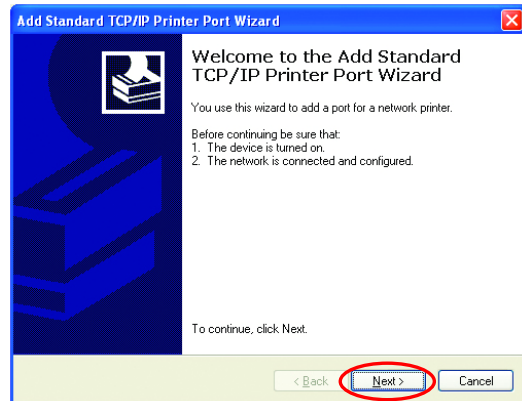


Fig. 8.51

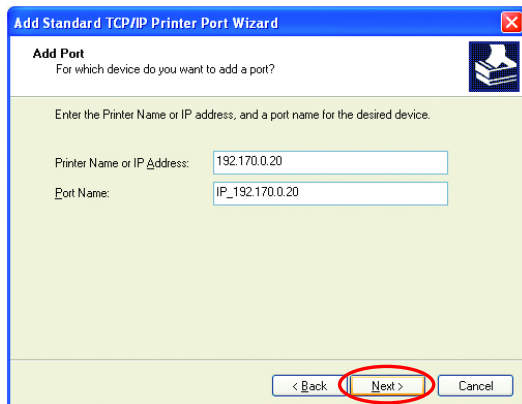


Fig. 8.52

## Networking Basics

### Setting up an LPR printer

- In this screen, select **Custom**.

- Click **Settings**

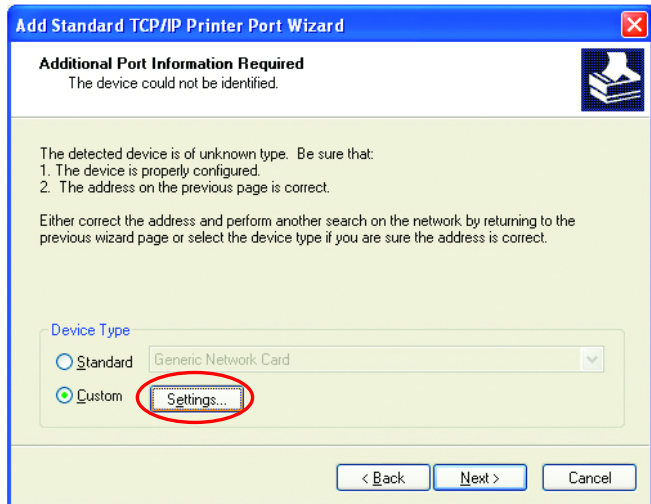


Fig. 8.53

- Enter the **Port Name** and the **Printer Name** or **IP Address**.

- Select **LPR**

- Enter a **Queue Name**. If there is more than one port on the print server, you must name the **Queue**.

- Click **OK**

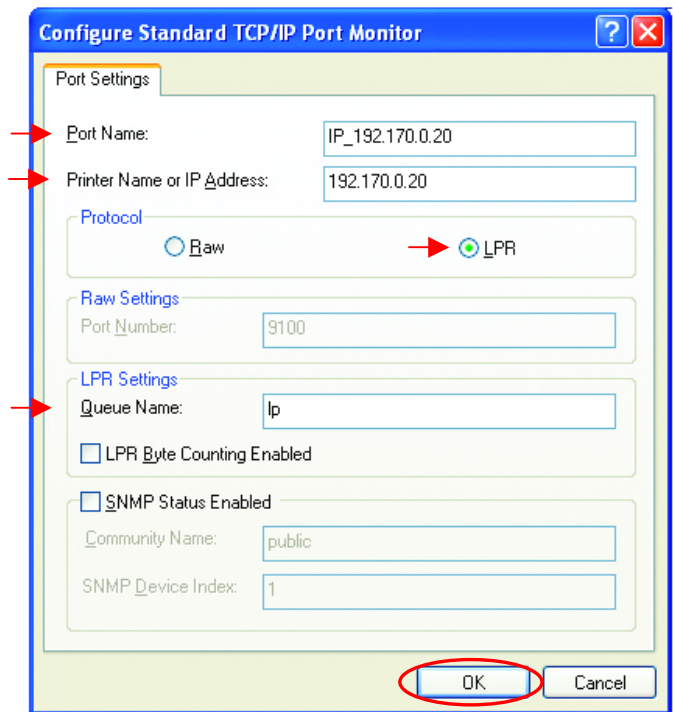


Fig. 8.54

# Networking Basics

## Setting up an LPR printer

- This screen will show you information about your printer.
- Click **Finish**

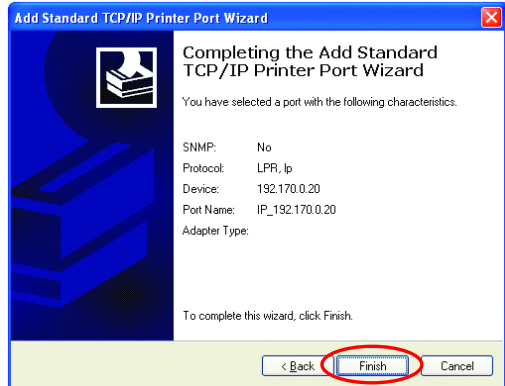


Fig. 8.55

- Select the printer you are adding from the list of **Printers**.
- Insert the printer driver disk that came with your printer.
- Click **Have Disk**

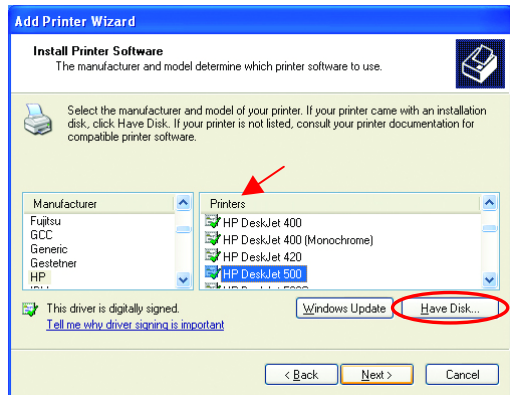


Fig. 8.56

If the printer driver is already installed,

- Select **Keep existing driver**
- Click **Next**

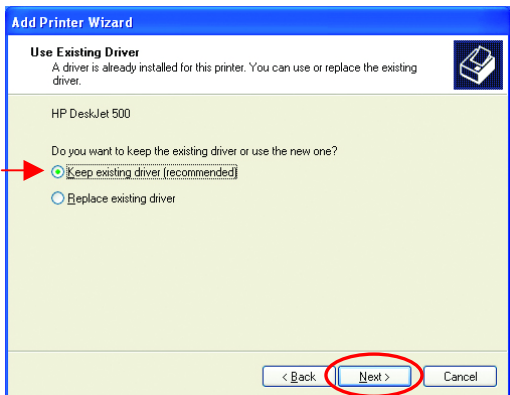


Fig. 8.57

## Networking Basics

### Setting up an LPR printer

- You can rename your printer if you choose. It is optional.

*Please remember the name of your printer. You will need this information when you use the **Add Printer Wizard** on the other computers on your network.*

- Click **Next**

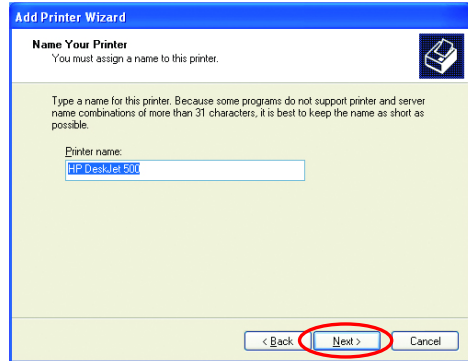


Fig. 8.58

- Select **Yes**, to print a test page.

- Click **Next**

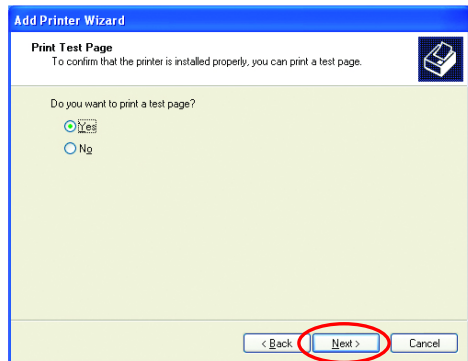


Fig. 8.59

*This screen will display information about your printer.*

- Click **Finish** to complete the addition of the printer.
- Please run the Add Printer Wizard on all the computers on your network in order to share the printer.

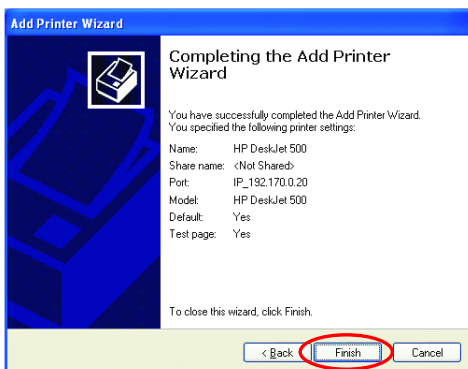


Fig. 8.60

*Note: You must run the **Network Setup Wizard** on all the computers on your network before you run the **Add Printer Wizard**.*

## Networking Basics

### Other Tasks

For help with other tasks in home or small office networking, see **Using the Shared Documents** folder and **Sharing files and folders** in the **Help and Support Center** in Microsoft Windows XP.

## 9. Technical Specifications

### Standards:

- IEEE 802.11b
- Wi-Fi Certified

### Adapter Type:

- PC Cardbus slot

### System Requirements:

- Laptop with Cardbus Controller

### Supported Operating Systems:

- Windows XP
- Windows 2000
- Windows ME
- Windows 98

### Data Security:

- 64/128/256-bit WEP (Wired Equivalent Privacy) Encryption
- Supports 802.1x authentication

### Data Rate: Mbps/channel

- 22 : PBCC
- 11 : CCK/PBCC
- 5.5 : CCK/PBCC
- 2 : QPSK
- 1 : BPSK

### Key Management:

- Automatic Dynamic Key Allocation (ADKA) through public key

### Range:

- Indoors – up to 328 feet (100 meters)

- Outdoors – up to 1,312 feet (400 meters)

**Diagnostic LED:**

- Power – solid green light indicates power connection
- Link/Activity – green solid/blinking light indicates Link/Activity

**Power Specifications:**

- Operating Voltage: 3.3V

**Network Architecture:**

- Supports Ad-Hoc Mode (Peer-to-Peer without Access Point) or Infrastructure Mode (Communications to wired networks via Access Points with Roaming)
- Compliant with IEEE 802.11b Standards

**Antenna:**

- Internal patch antenna supporting diversity
- Mobility: Seamless roaming across cell boundaries within access point range

**Frequency Range:**

- 2.4 – 2.4835 GHz, Direct Sequence Spread Spectrum (DSSS)

**Operating Channels:**

- 1-11 United States (FCC)
- 1-11 Canada (DOC)
- 1-14 Japan (MKK)
- 1-13 Europe (Except Spain and France) (ETSI)

**Physical Dimensions:**

- L = 4.50 inches (114 mm)
- W = 2.25 inches (54 mm)
- H = .25 inches (6 mm)

**Temperature:**

- Operating Temperature: 14°F to 131°F (-10°C to 55°C)
- Storage Temperature: -4°F to 167°F (-20°C to 75°C)

**Humidity:**

- Maximum up to 95% Non-condensing

**Emissions:**

- FCC

- CE

**Safety:** UL

## **10. Contacting Technical Support**

You can find software updates and user documentation on the D-Link website.

D-Link provides free technical support for customers within the United States and within Canada for the duration of the warranty period on this product.

U.S. and Canadian customers can contact D-Link technical support through our website, or by phone.

### ***Tech Support for customers within the United States:***

#### ***D-Link Technical Support over the Telephone:***

(877) 453-5465

24 hours a day, seven days a week.

#### ***D-Link Technical Support over the Internet:***

<http://support.dlink.com>

email:[support@dlink.com](mailto:support@dlink.com)

### ***Tech Support for customers within Canada:***

#### ***D-Link Technical Support over the Telephone:***

(800) 361-5265

Monday to Friday 8:30am to 9:00pm EST

#### ***D-Link Technical Support over the Internet:***

<http://support.dlink.ca>

email:[support@dlink.ca](mailto:support@dlink.ca)



# 11. Limited Warranty and Registration

Subject to the terms and conditions set forth herein, D-Link Systems, Inc. ("D-Link") provides this Limited warranty for its product only to the person or entity that originally purchased the product from:

- D-Link or its authorized reseller or distributor and
- Products purchased and delivered within the fifty states of the United States, the District of Columbia, U.S. Possessions or Protectorates, U.S. Military Installations, addresses with an APO or FPO.

**Limited Warranty:** D-Link warrants that the hardware portion of the D-Link products described below will be free from material defects in workmanship and materials from the date of original retail purchase of the product, for the period set forth below applicable to the product type ("Warranty Period"), except as otherwise stated herein.

3-Year Limited Warranty for the Product(s) is defined as follows:

- Hardware (excluding power supplies and fans) Three (3) Years
- Power Supplies and Fans One (1) Year
- Spare parts and spare kits Ninety (90) days

D-Link's sole obligation shall be to repair or replace the defective Hardware during the Warranty Period at no charge to the original owner or to refund at D-Link's sole discretion. Such repair or replacement will be rendered by D-Link at an Authorized D-Link Service Office. The replacement Hardware need not be new or have an identical make, model or part. D-Link may in its sole discretion replace the defective Hardware (or any part thereof) with any reconditioned product that D-Link reasonably determines is substantially equivalent (or superior) in all material respects to the defective Hardware. Repaired or replacement Hardware will be warranted for the remainder of the original Warranty Period from the date of original retail purchase. If a material defect is incapable of correction, or if D-Link determines in its sole discretion that it is not practical to repair or replace the defective Hardware, the price paid by the original purchaser for the defective Hardware will be refunded by D-Link upon return to D-Link of the defective Hardware. All Hardware (or part thereof) that is replaced by D-Link, or for which the purchase price is refunded, shall become the property of D-Link upon replacement or refund.

**Limited Software Warranty:** D-Link warrants that the software portion of the product ("Software") will substantially conform to D-Link's then current functional specifications for the Software, as set forth in the applicable documentation, from the date of original retail purchase of the Software for a period of ninety (90) days ("Warranty Period"), provided that the Software is properly installed on approved hardware and operated as contemplated in its documentation. D-Link further warrants that, during the Warranty Period, the magnetic media on which D-Link delivers the Software will be free of physical defects. D-Link's sole obligation shall be to replace the non-conforming Software (or defective media) with software that substantially conforms to D-Link's functional specifications for the Software or to refund at D-Link's sole discretion. Except as otherwise agreed by D-Link in writing, the replacement Software is provided only to the original licensee, and is subject to the terms and conditions of the license granted by D-Link for the Software. Software will be warranted for the remainder of the original Warranty Period from the date of original retail purchase. If a material non-conformance is incapable of correction, or if D-Link determines in its sole discretion that it is not practical to replace the non-conforming Software, the price paid by the original licensee for the non-conforming Software will be refunded by D-Link; provided that the non-conforming Software (and all copies thereof) is first returned to D-Link. The license granted respecting any Software for which a refund is given automatically terminates.

**Non-Applicability of Warranty:** The Limited Warranty provided hereunder for hardware and software of D-Link's products will not be applied to and does not cover any refurbished product and any product purchased through the inventory clearance or liquidation sale or other sales in which D-Link, the sellers, or the liquidators expressly disclaim their warranty obligation pertaining to the product and in that case, the product is being sold "As-Is" without any warranty whatsoever including, without limitation, the Limited Warranty as described herein, notwithstanding anything stated herein to the contrary.

**Submitting A Claim:** The customer shall return the product to the original purchase point based on its return policy. In case the return policy period has expired and the product is within warranty, the customer shall submit a claim to D-Link as outlined below:

- The customer must submit with the product as part of the claim a written description of the Hardware defect or Software nonconformance in sufficient detail to allow D-Link to confirm the same.

- The original product owner must obtain a Return Material Authorization (“RMA”) number from the Authorized D-Link Service Office and, if requested, provide written proof of purchase of the product (such as a copy of the dated purchase invoice for the product) before the warranty service is provided.
- After an RMA number is issued, the defective product must be packaged securely in the original or other suitable shipping package to ensure that it will not be damaged in transit, and the RMA number must be prominently marked on the outside of the package. Do not include any manuals or accessories in the shipping package. D-Link will only replace the defective portion of the Product and will not ship back any accessories.
- The customer is responsible for all in-bound shipping charges to D-Link. No Cash on Delivery (“COD”) is allowed. Products sent COD will either be rejected by D-Link or become the property of D-Link. Products shall be fully insured by the customer and shipped to **D-Link Systems, Inc., 53 Discovery Drive, Irvine, CA 92618**. D-Link will not be held responsible for any packages that are lost in transit to D-Link. The repaired or replaced packages will be shipped to the customer via UPS Ground or any common carrier selected by D-Link, with shipping charges prepaid. Expedited shipping is available if shipping charges are prepaid by the customer and upon request.

D-Link may reject or return any product that is not packaged and shipped in strict compliance with the foregoing requirements, or for which an RMA number is not visible from the outside of the package. The product owner agrees to pay D-Link’s reasonable handling and return shipping charges for any product that is not packaged and shipped in accordance with the foregoing requirements, or that is determined by D-Link not to be defective or non-conforming.

**What Is Not Covered:** This limited warranty provided by D-Link does not cover: Products, if in D-Link’s judgment, have been subjected to abuse, accident, alteration, modification, tampering, negligence, misuse, faulty installation, lack of reasonable care, repair or service in any way that is not contemplated in the documentation for the product, or if the model or serial number has been altered, tampered with, defaced or removed; Initial installation, installation and removal of the product for repair, and shipping costs; Operational adjustments covered in the operating manual for the product, and normal maintenance; Damage that occurs in shipment, due to act of God, failures due to power surge, and cosmetic damage; Any hardware, software, firmware or other products or services provided by anyone other than D-Link; Products that have been purchased from inventory clearance or liquidation sales or other sales in which D-Link, the sellers, or the liquidators expressly disclaim their warranty obligation pertaining to the product. Repair by anyone other than D-Link or an Authorized D-Link Service Office will void this Warranty.

**Disclaimer of Other Warranties:** EXCEPT FOR THE LIMITED WARRANTY SPECIFIED HEREIN, THE PRODUCT IS PROVIDED “AS-IS” WITHOUT ANY WARRANTY OF ANY KIND WHATSOEVER INCLUDING, WITHOUT LIMITATION, ANY WARRANTY OF MERCHANTABILITY, FITNESS FOR A PARTICULAR PURPOSE AND NON-INFRINGEMENT. IF ANY IMPLIED WARRANTY CANNOT BE DISCLAIMED IN ANY TERRITORY WHERE A PRODUCT IS SOLD, THE DURATION OF SUCH IMPLIED WARRANTY SHALL BE LIMITED TO NINETY (90) DAYS. EXCEPT AS EXPRESSLY COVERED UNDER THE LIMITED WARRANTY PROVIDED HEREIN, THE ENTIRE RISK AS TO THE QUALITY, SELECTION AND PERFORMANCE OF THE PRODUCT IS WITH THE PURCHASER OF THE PRODUCT.

**Limitation of Liability:** TO THE MAXIMUM EXTENT PERMITTED BY LAW, D-LINK IS NOT LIABLE UNDER ANY CONTRACT, NEGLIGENCE, STRICT LIABILITY OR OTHER LEGAL OR EQUITABLE THEORY FOR ANY LOSS OF USE OF THE PRODUCT, INCONVENIENCE OR DAMAGES OF ANY CHARACTER, WHETHER DIRECT, SPECIAL, INCIDENTAL OR CONSEQUENTIAL (INCLUDING, BUT NOT LIMITED TO, DAMAGES FOR LOSS OF GOODWILL, LOSS OF REVENUE OR PROFIT, WORK STOPPAGE, COMPUTER FAILURE OR MALFUNCTION, FAILURE OF OTHER EQUIPMENT OR COMPUTER PROGRAMS TO WHICH D-LINK’S PRODUCT IS CONNECTED WITH, LOSS OF INFORMATION OR DATA CONTAINED IN, STORED ON, OR INTEGRATED WITH ANY PRODUCT RETURNED TO D-LINK FOR WARRANTY SERVICE) RESULTING FROM THE USE OF THE PRODUCT, RELATING TO WARRANTY SERVICE, OR ARISING OUT OF ANY BREACH OF THIS LIMITED WARRANTY, EVEN IF D-LINK HAS BEEN ADVISED OF THE POSSIBILITY OF SUCH DAMAGES. THE SOLE REMEDY FOR A BREACH OF THE FOREGOING LIMITED WARRANTY IS REPAIR, REPLACEMENT OR REFUND OF THE DEFECTIVE OR NON-CONFORMING PRODUCT. THE MAXIMUM LIABILITY OF D-LINK UNDER THIS WARRANTY IS LIMITED TO THE PURCHASE PRICE OF THE PRODUCT COVERED BY THE WARRANTY. THE FOREGOING EXPRESS WRITTEN WARRANTIES AND REMEDIES ARE EXCLUSIVE AND ARE IN LIEU OF ANY OTHER WARRANTIES OR REMEDIES, EXPRESS, IMPLIED OR STATUTORY

**Governing Law:** This Limited Warranty shall be governed by the laws of the State of California. Some states do not allow exclusion or limitation of incidental or consequential damages, or limitations on how long an implied warranty lasts, so the foregoing limitations and exclusions may not apply. This limited warranty provides specific legal rights and the product owner may also have other rights which vary from state to state.

**Trademarks:** D-Link is a registered trademark of D-Link Systems, Inc. Other trademarks or registered trademarks are the property of their respective manufacturers or owners.

**Copyright Statement:** No part of this publication or documentation accompanying this Product may be reproduced in any form or by any means or used to make any derivative such as translation, transformation, or adaptation without permission from D-Link Corporation/D-Link Systems, Inc., as stipulated by the United States Copyright Act of 1976. Contents are subject to change without prior notice. Copyright © 2002 by D-Link Corporation/D-Link Systems, Inc. All rights reserved.

**CE Mark Warning:** This is a Class B product. In a domestic environment, this product may cause radio interference, in which case the user may be required to take adequate measures.

**FCC Statement:** This equipment has been tested and found to comply with the limits for a Class B digital device, pursuant to part 15 of the FCC Rules. These limits are designed to provide reasonable protection against harmful interference in a residential installation. This equipment generates, uses, and can radiate radio frequency energy and, if not installed and used in accordance with the instructions, may cause harmful interference to radio communication. However, there is no guarantee that interference will not occur in a particular installation. If this equipment does cause harmful interference to radio or television reception, which can be determined by turning the equipment off and on, the user is encouraged to try to correct the interference by one or more of the following measures:

- Reorient or relocate the receiving antenna.
- Increase the separation between the equipment and receiver.
- Connect the equipment into an outlet on a circuit different from that to which the receiver is connected.
- Consult the dealer or an experienced radio/TV technician for help.

**FCC Caution:**

The manufacturer is not responsible for any radio or TV interference caused by unauthorized modifications to this equipment; such modifications could void the user's authority to operate the equipment.

(1) The devices are restricted to indoor operations within the 5.15 to 5.25GHz range. (2) For this device to operate in the 5.15 to 5.25GHz range, the devices must use integral antennas.

This device complies with Part 15 of the FCC Rules. Operation is subject to the following two conditions: (1) This device may not cause harmful interference, and (2) this device must accept any interference received, including interference that may cause undesired operation.

**IMPORTANT NOTE:**

**FCC Radiation Exposure Statement:**

This equipment complies with FCC radiation exposure limits set forth for an uncontrolled environment. The antenna(s) used for this equipment must be installed to provide a separation distance of at least eight inches (20 cm) from all persons.

This equipment must not be operated in conjunction with any other antenna.

**Register online your D-Link product at <http://support.dlink.com/register/>**