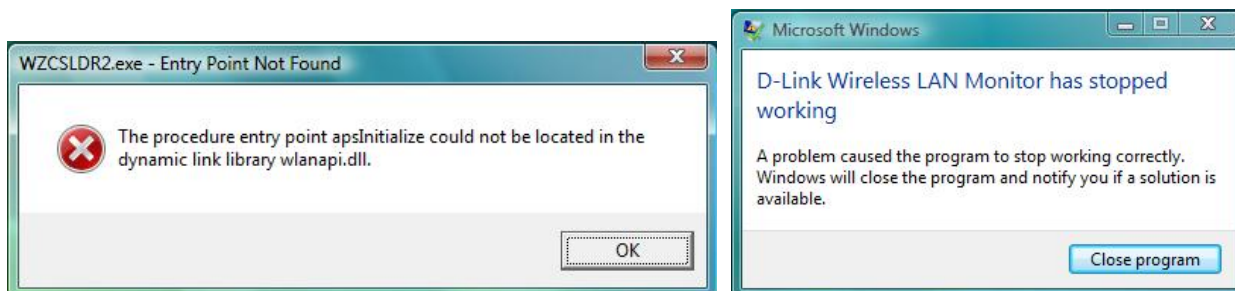


## Troubleshooting: Error message in Windows Vista after installing Windows XP drivers

- “WZCSLDR2.exe – Entry Point Not Found”
- “D-Link Wireless LAN Monitor has stopped working”



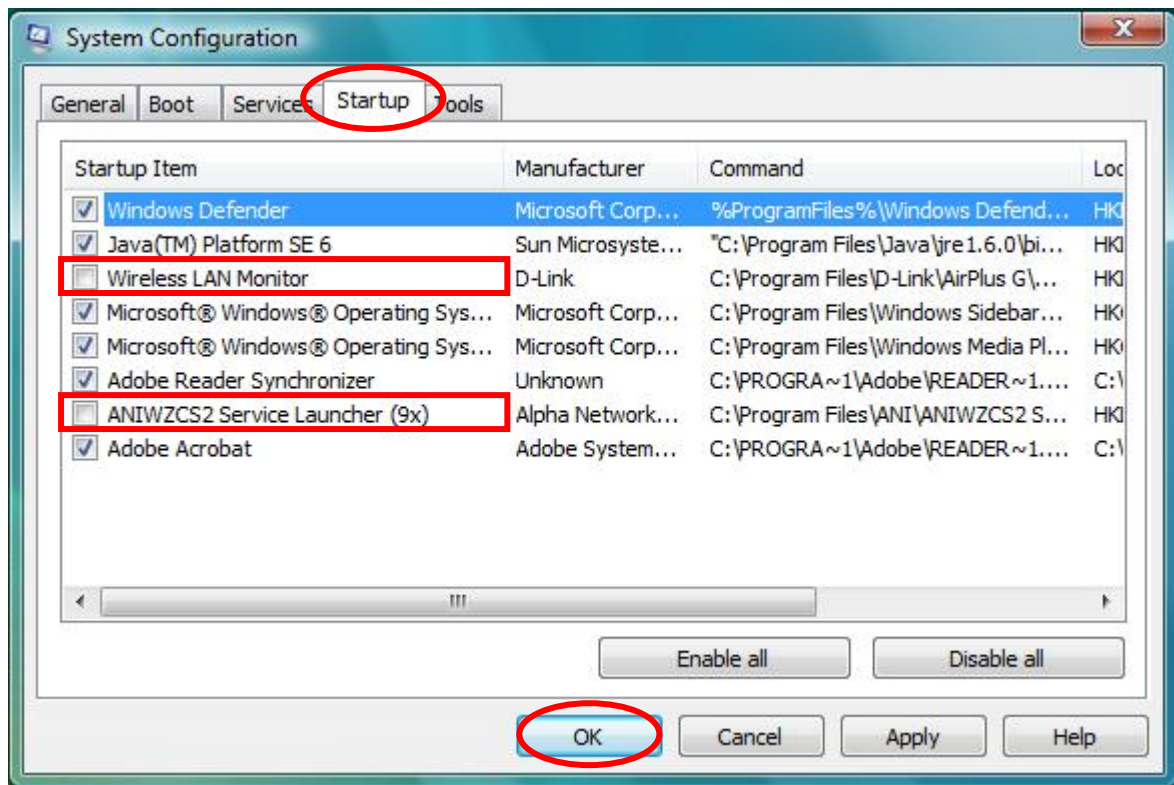
If you are getting error messages similar to these please follow the steps below to fix the problem.

**Step 1.** Click on the **Start** button. In the search box type “**msconfig**” (without quotes) and press Enter.

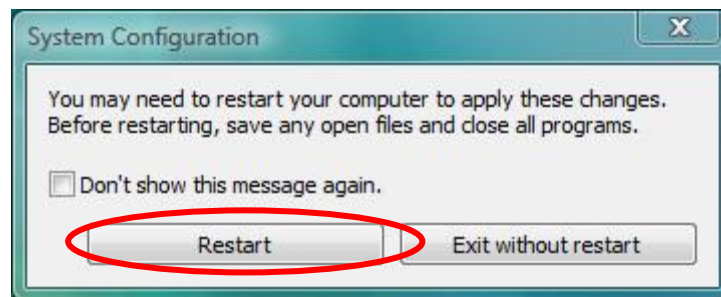


**Step 2.** In the System Configuration window choose the **Startup** tab.

In the Startup Items locate “**Wireless LAN Monitor**” and also “**ANIWZCS2 Service Launcher**”. Uncheck both of these items. Press OK.



**Step 3.** Click on “Restart” in the next window.



Your computer will restart and you should stop getting the error messages.