

# D-Link Quick Installation Guide

*This product can be set up using any current web browser, i.e., Internet Explorer 6 or Netscape Navigator 6.2.3.*



**DWL-G710**  
D-Link *AirPlus™ G*  
Wireless Range Extender

## Before You Begin

It's best to use a computer (with an Ethernet adapter) that is connected to a switch for configuring the DWL-G710. The default IP address for the DWL-G710 is **192.168.0.30** with a Subnet Mask of **255.255.255.0**. You will need to assign your computer a Static IP address within the same range as the DWL-G710's IP address for the purpose of configuring the DWL-G710. **See the Manual on the CD-ROM if you need assistance in assigning a Static IP address for your network adapter.**

## Check Your Package Contents



**DWL-G710 Wireless Range Extender**



**CD-ROM with Manual**



**Ethernet (CAT5e UTP/Straight-Through) Cable**



**5V 2A DC Power Adapter**



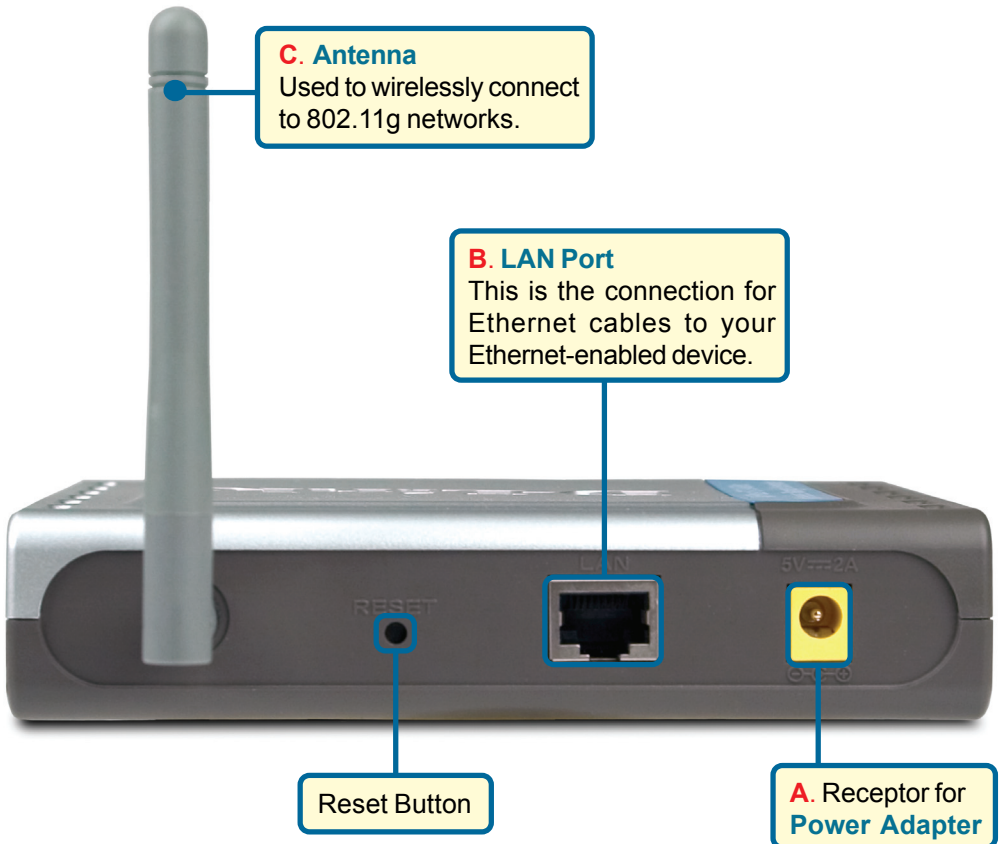
Using a power supply with a different voltage rating will damage and void the warranty of this product.

If any of the above items are missing, please contact your reseller.

# 1

## Connecting The DWL-G710 Wireless Range Extender To Your Network

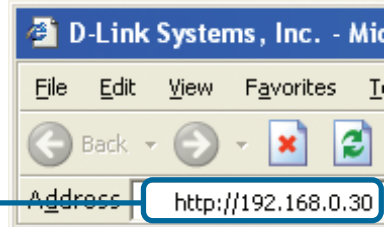
- A. Connect the power adapter to the **receptor** on the rear panel of the DWL-G710 and then plug the other end of the power adapter to a wall outlet or power strip. The Power LED will turn **ON** to indicate proper operation.
- B. Using an Ethernet cable, insert one end of the cable to the **LAN port** on the rear panel of the DWL-G710 and the other end of the cable to a switch. **Note:** You also have the option of connecting the DWL-G710 directly to the computer that will be used for configuration. The Link LED light will illuminate to indicate a proper Ethernet connection.
- C. Computers with 802.11g wireless adapters such as the DWL-G630 AirPlus™ G Wireless Cardbus Adapter and the DWL-G510 AirPlus™ G Wireless PCI Adapter can connect to the DWL-G710.



# 2

## Using The Setup Wizard

Open your Web browser and type **http://192.168.0.30** into the URL address box. Then press the **Enter** or **Return** key.



The logon pop-up screen will appear.

Type **admin** for the username and leave the password field blank.



Click **OK**

Once you have logged in, the Home screen will appear.

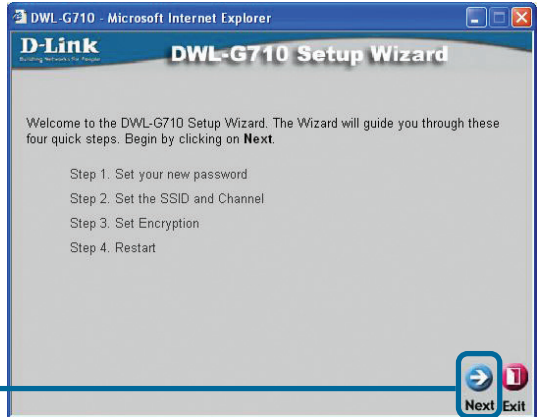
Click **Run Wizard**



# 2

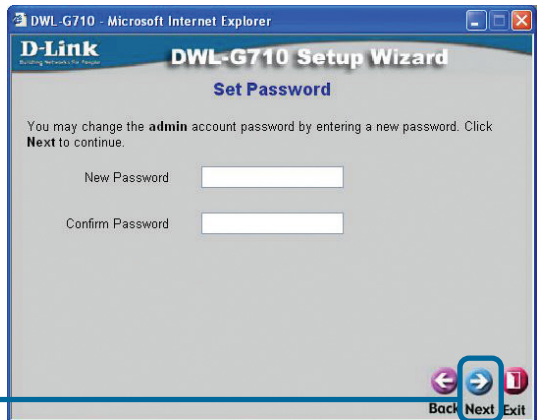
## Using The Setup Wizard (continued)

You will see the following screens.



Click **Next**

**Set up your new password.** You have the option to establish a password.



Click **Next**

**Set Wireless LAN Connection** By default the DWL-G710 **SSID** is set to **default** with a **Channel** setting of **6**. Site Survey will display existing devices on your wireless network.



Click **Site Survey**

# 2

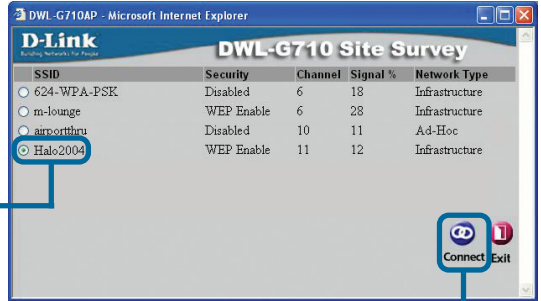
## Using The Setup Wizard (continued)

### Site Survey

The Site Survey will display the available SSID's on your wireless network.

Click the **radio button** next to the SSID of the wireless network whose signal you wish to repeat.

Click **Connect**



### Set Wireless LAN Connection

The SSID and Channel should now be set to the same settings as the SSID that you selected.

Click **Next**



### Encryption

The DWL-G710 is capable of two levels of WEP encryption (64-bit and 128-bit) as well as WPA-PSK and WPA2-PSK. **By default encryption is disabled.** You can change the encryption settings to enable more secure wireless communication.

Click **Next**



# 2

## Using The Setup Wizard (continued)

### WEP Encryption

Select WEP, the level of encryption (64 or 128-bit), the Key Type (HEX (0-9, A-F) or ASCII format), and your WEP Key. The key must be the same on all other wireless devices.

Click **Next**



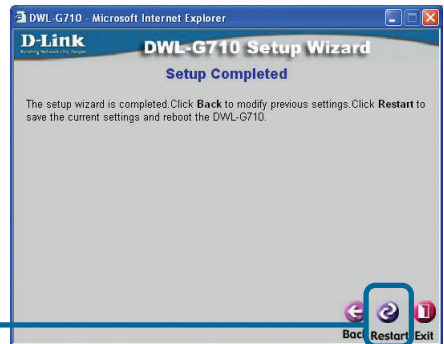
### WPA/WPA2 Encryption

Select WPA-PSK or WPA2-PSK. Enter the Passphrase (8-63 characters). The Passphrase must be the same on all wireless devices.

Click **Next**



Click **Restart**

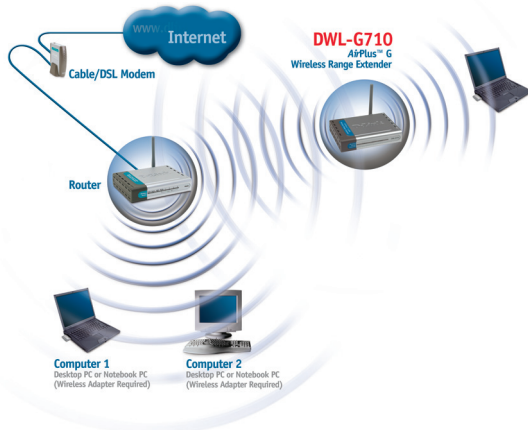


You will be returned to the **Home** tab. Please close all Internet browser windows.

# 3

## Your Setup is Complete!

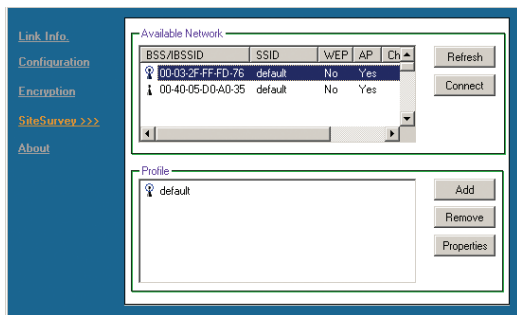
When you have completed the steps in this **Quick Installation Guide**, your connected network should look similar to this:



# 4

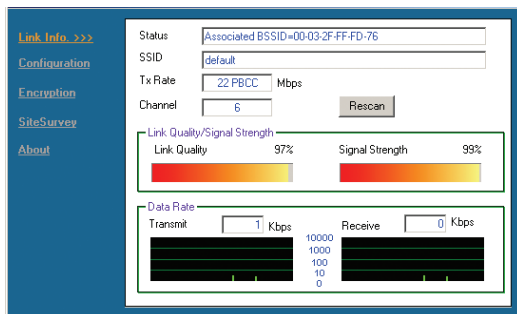
## Connecting to the DWL-G710

Using the *AirPlus™ G* Wireless Utility included with the *AirPlus™ G* adapters, you can browse and connect to the DWL-G710.



The MAC address of the DWL-G710 is listed on the product sticker on the bottom of the unit. You should see more than one available device using the same SSID. Select the DWL-G710 by selecting the MAC address from the bottom of the unit.

The Link Info page of the *AirPlus™ G* utility will show the connection status between the DWL-G710 and *AirPlus™ G* wireless adapter.



## *Technical Support*

You can find software updates and user documentation on the D-Link website.

D-Link provides free technical support for customers within the United States and within Canada for the duration of the warranty period on this product.

U.S. and Canadian customers can contact D-Link technical support through our website, or by phone.

### **Tech Support for customers within the United States:**

***D-Link Technical Support over the Telephone:***

(877) 453-5465

24 hours a day, seven days a week.

***D-Link Technical Support over the Internet:***

<http://support.dlink.com>

[email:support@dlink.com](mailto:support@dlink.com)

### **Tech Support for customers within Canada:**

***D-Link Technical Support over the Telephone:***

(800) 361-5265

Monday to Friday, 7:30am to 12:00am EST

***D-Link Technical Support over the Internet:***

<http://support.dlink.ca>

[email:support@dlink.ca](mailto:support@dlink.ca)

**D-Link<sup>®</sup>**  
**Building Networks for People**