



Firmware Version: 1.15.005
Boot Code Version: 1.00.006
MIB Version: 1.15.005
Published: July 18th, 2017

These release notes include important information about D-Link switch firmware revisions. Please verify that these release notes are correct for your switch:

- If you are installing a new switch, please check the hardware version on the device label; make sure that your switch meets the system requirement of this firmware version. Please refer to [Revision History and System Requirement](#) for detailed firmware and hardware matrix.
- If the switch is powered on, you can check the hardware version by typing "show switch" command via Telnet or by checking the device information page on the web graphic user interface.
- If you plan to upgrade to the new firmware release, please refer to the [Upgrade Instructions](#) for the correct firmware upgrade procedure.

For more detailed information regarding our switch products, please refer to [Related Documentation](#).

You can also download the switch firmware and technical documentation from <http://tsd.dlink.com.tw>.

Content:

Upgrade Instructions:	3
Upgrade using CLI (via Console or Telnet)	3
Upgrade using Web-UI.....	4
Upgrade using D-Link Network Assistant App	7
New Features:.....	12
Changes of MIB.....	12
Changes of Command Line Interface:	12
Problem Fixed:	12
Known Issues:	13
Related Documentation:	13

Revision History and System Requirement:

Firmware Version	Date	Model	Hardware Version
Runtime: V1.15.005 Boot: 1.00.006	18-July-2017	DXS-1210-10TS DXS-1210-12TC DXS-1210-12SC	A2

Note:

V1.15.005 is NOT BACKWARD COMPATIBLE to A1 hardware version, please DON'T INSTALL V1.15.005 FW into A1 switches.

Upgrade Instructions:

Note:

V1.15.005 is NOT BACKWARD COMPATIBLE to A1 hardware version, please DON'T INSTALL V1.15.005 FW into A1 switches.

D-Link Switches support firmware upgrade via TFTP server. You can download the firmware from D-Link web site <http://tsd.dlink.com.tw>, and copy the downloaded firmware to the TFTP server folder. Please make sure that the TFTP server is accessible from the switch via networks.

Upgrade using CLI (via Console or Telnet)

1. If you use Telnet, please make sure the network connection between the switch and PC is active. If you use Console, please use "Serial to USB" cable connect switch console port and PC USB interface.
2. Via Telnet: Use software that supports telnet, for example, HyperTerminal or Telnet command in Microsoft Windows, to connect to the switch. If you are using Telnet command, type the command followed by the switch IP address, eg. `telnet 10.90.90.90`.

Via Console: Use software that supports serial communication, for example, HyperTerminal, Putty or SecureCRT to connect switch console port with band rate **115200**.

3. The logon prompt will appear.

The switch will prompt the user to enter his/her username and password. Both the default user name and password are **"admin"**.

The switch will not upgrade firmware to current startup image ID, and it will automatically upgrade to another one.

To upgrade the switch firmware, execute the following command:

Command	Function
<code>copy tftp://LOCATION/SOURCE-URL</code>	Download firmware file from the TFTP server to the switch.

When completing firmware upgrade, the following messages will pop up.

```
Switch# copy tftp://10.90.90.99/DXS-1210-10TS_12TC_12SC_A2_FW_V1.15.005.hex
TFTP Firmware Upgrade processing.....Do not power off!!
Firmware upgrade successfully!
Switch#
```

4. Select the image ID with new firmware as the next boot up image ID, reboot system and execute the following commands to check the firmware version and switch's information.

Command	Function
<code>show switch</code>	Display the information of current firmware and boot version.
<code>show firmware</code>	Display the information of the image or firmware.

Example:

```
1. Switch# copy tftp://10.90.90.99/DXS-1210-10TS_12TC_12SC_A2_FW_V1.15.005.hex
TFTP Firmware Upgrade processing.....Do not power off!!
Transferring firmware..... 10%
Firmware upgrade successfully!
Switch#
```

2. Switch> **show switch**

Command: show switch

Device Information

```
Device Type      : DXS-1210-12SC 10GbE Smart Managed Switch
System Name     : Switch
System Location  :
System Contact   :
Boot PROM Version : 1.00.006
Firmware Version : V1.15.005
Hardware Version : A2
MAC Address     : 00-99-22-88-11-66
IP Address      : 10.90.90.90
Mask            : 255.255.255.0
Gateway         : 0.0.0.0
System Time     : 01/01/2017 00:12:35
Serial Number   : QBDGS12102800
```

3. Switch> **show firmware**

Command: show firmware

Switch# show firmware

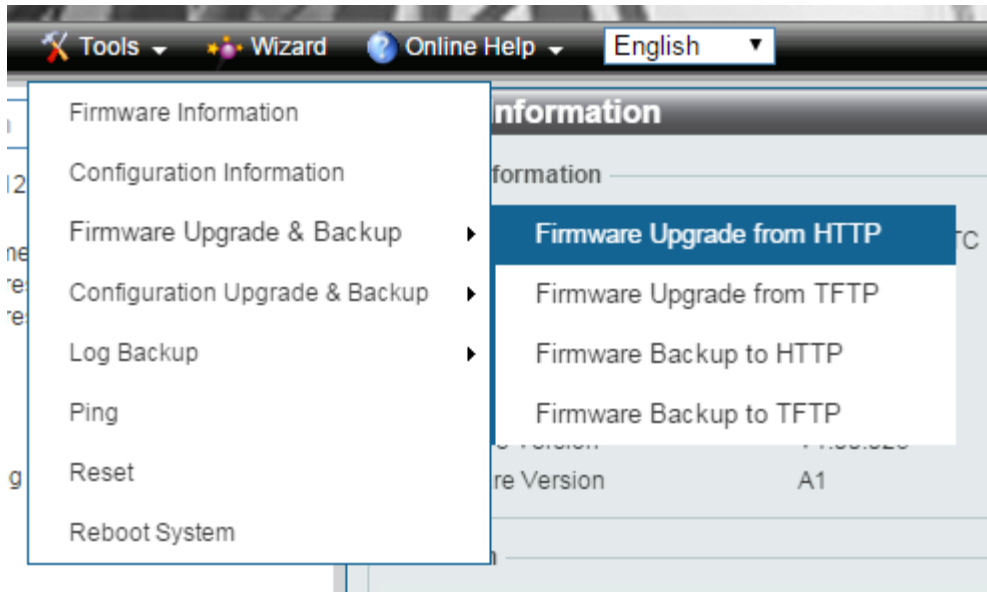
Image ID	Version	Size(B)	Update Time
1	V1.15.005	17132864	01/01/2017 00:11:44
*2c	V1.15.005	15433760	01/01/2017 02:12:36

c : Current boot up firmware

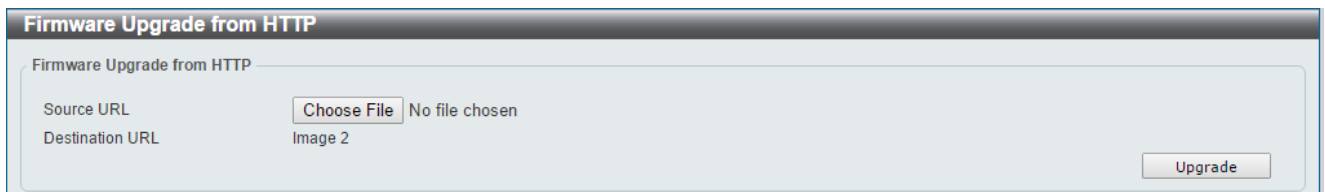
* : Boot up firmware

Upgrade using Web-UI

1. Connect a workstation to any switch port of the device.
2. Open the web browser from the workstation and enter the IP address of the switch. The switch's default IP address is 10.90.90.90.
3. Press OK to login. Both the username and password are **"admin"** by default.
4. To update switch's firmware or configuration file, select **Tools > Firmware Backup & Upgrade** from the banner.



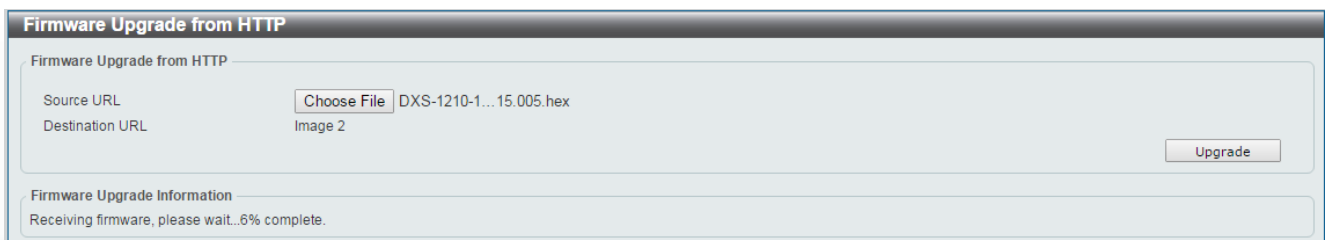
- Two methods can be selected : **HTTP** or **TFTP**
- Select **Firmware Update from HTTP** to upgrade the firmware to or from your local drive of PC.



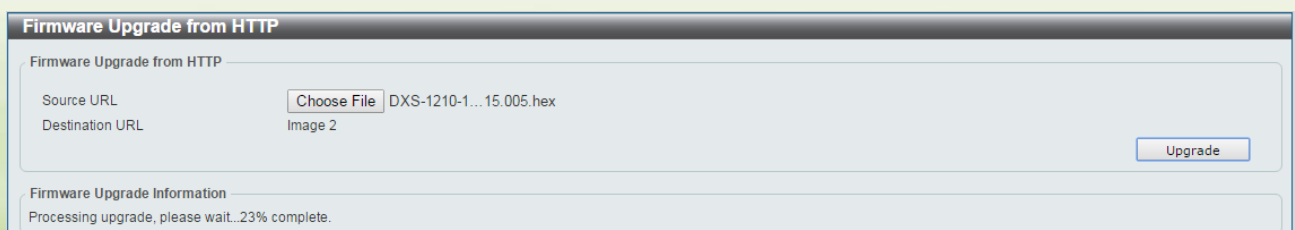
- Click **“Choose File”** to browse your inventories for a saved firmware file



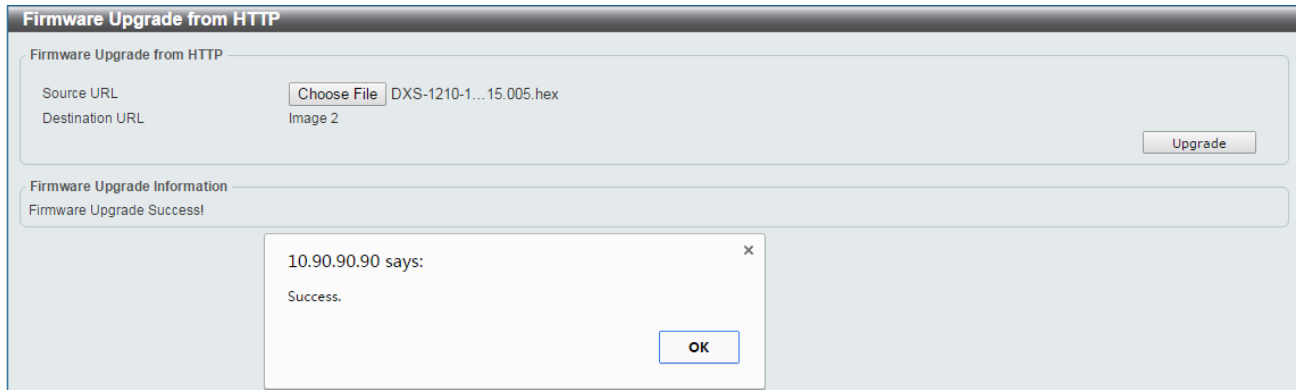
- Click **Upgrade** after selecting the firmware file you want to upgrade



- When download successfully, do not power off, and the switch will continue processing the firmware upgrade (write firmware to flash).



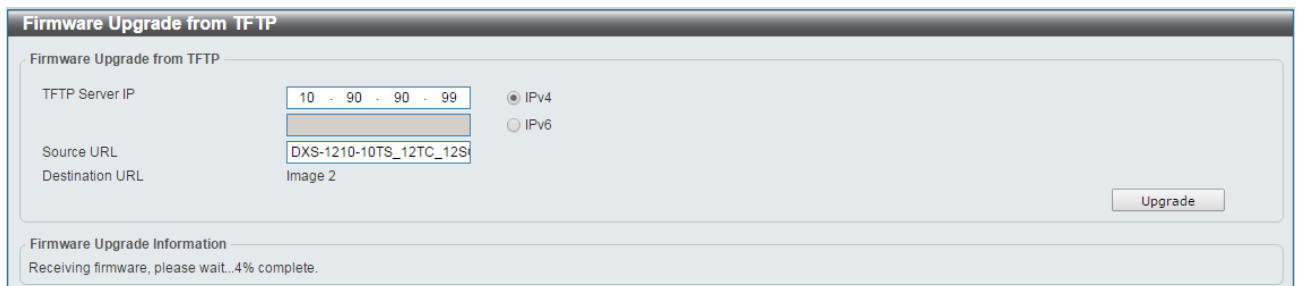
d. Wait until the "Firmware Upgrade Successful" message pops up.



7. Select **TFTP** to upgrade the firmware to or from a remote TFTP server.



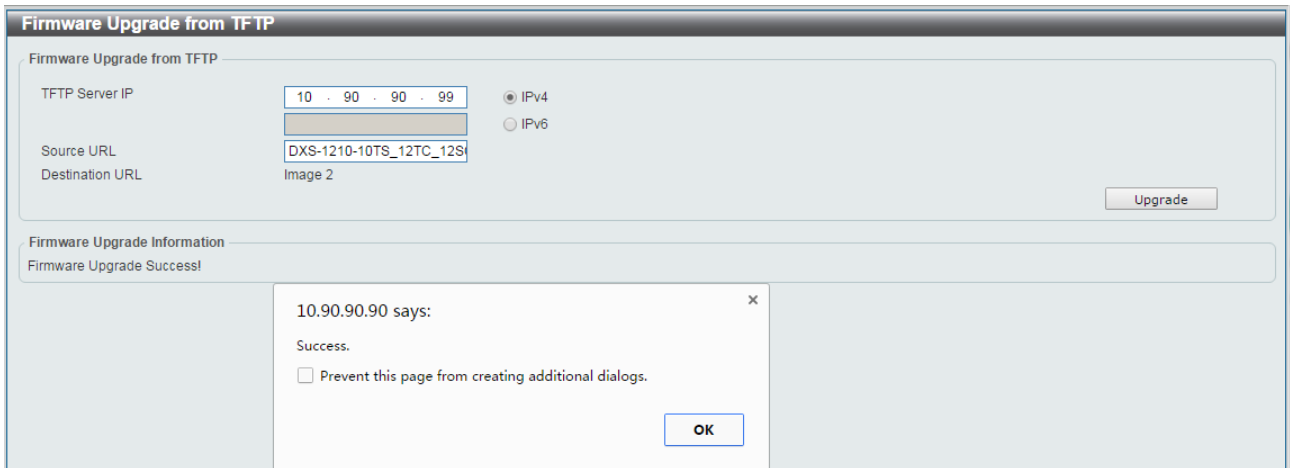
- a. Enter the TFTP server IP and the URL of the firmware file located on the TFTP server.
- b. Click **Upgrade** after selecting the firmware file you want to restore.
- c. The firmware will be downloaded to switch.



d. When download successfully, do not power off, and the switch will continue processing the firmware upgrade (write firmware to flash).

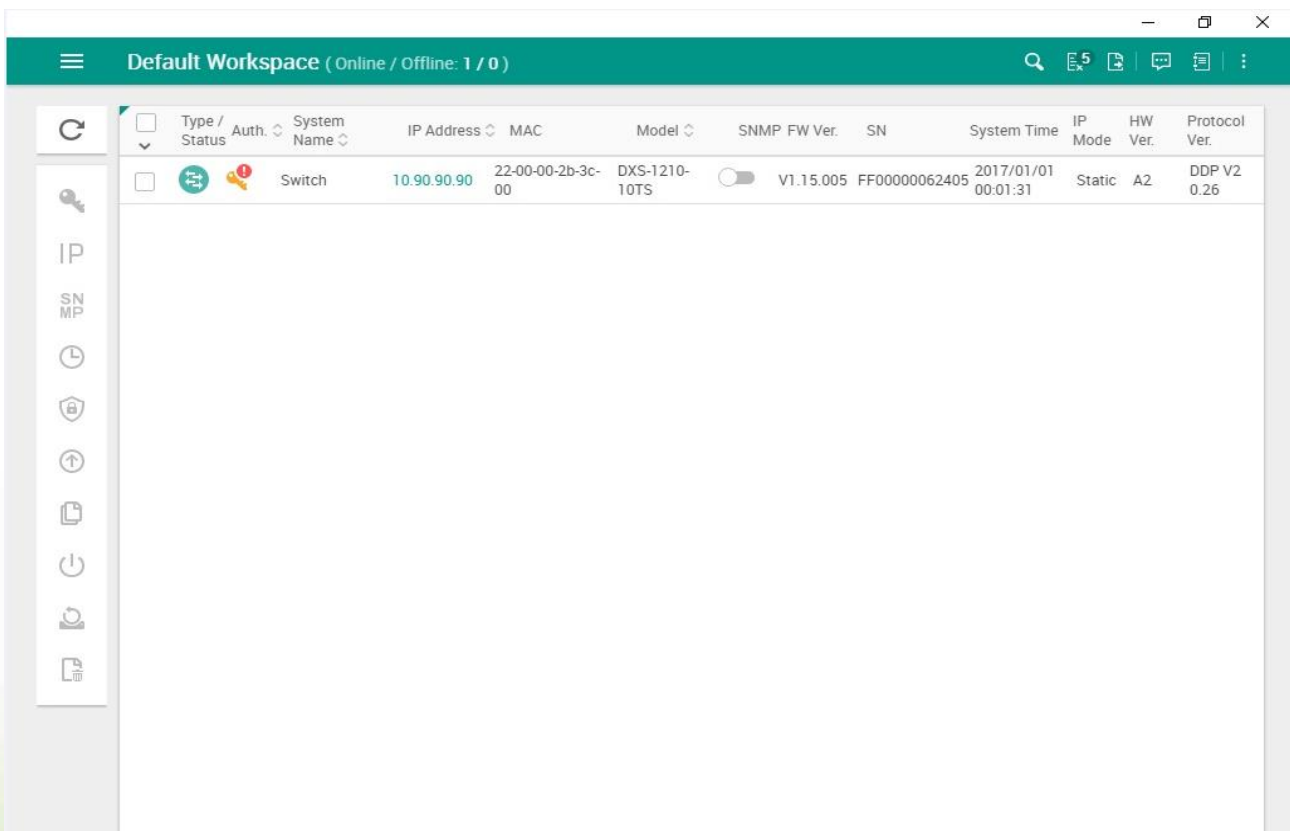


e. Wait until the firmware upgrade ends.

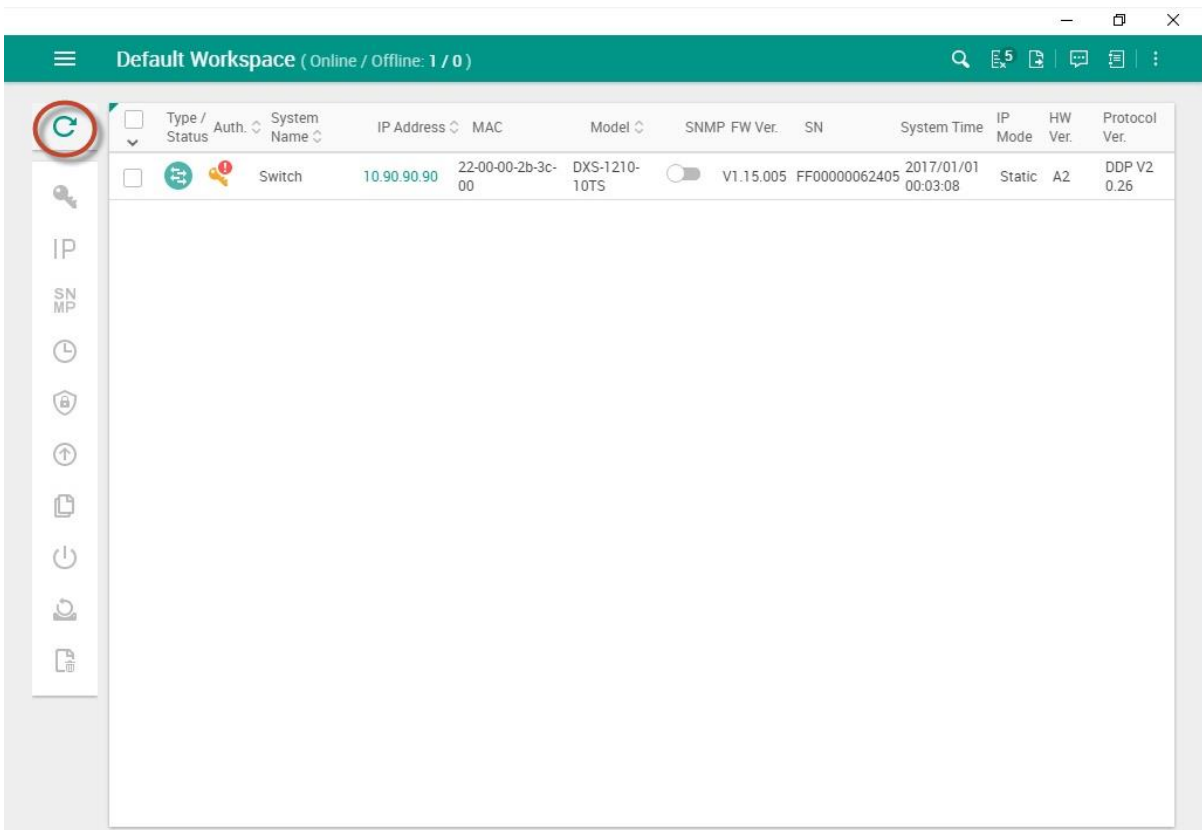


Upgrade using D-Link Network Assistant App

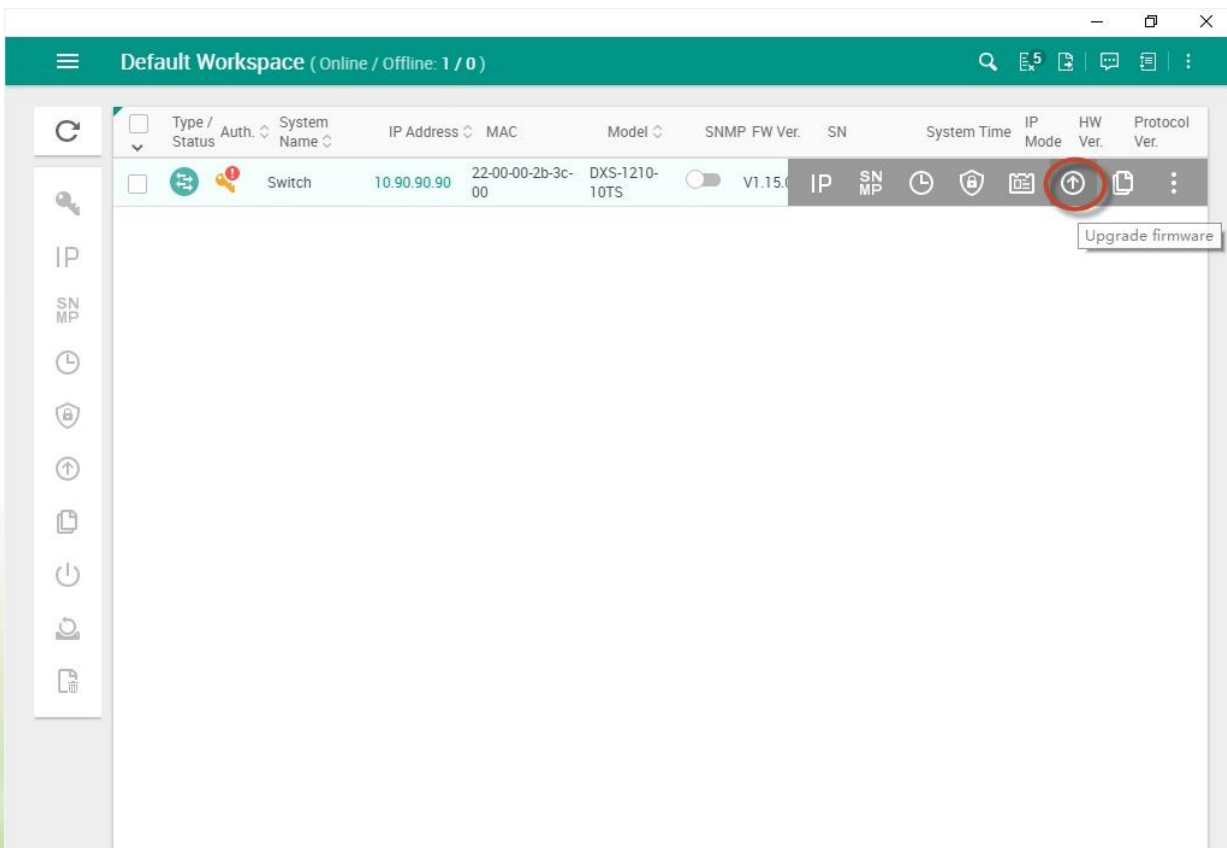
1. Connect a workstation installed with java SE runtime environment to any switch port of the device. Install DNA App in Web Store of Chrome Browser.
2. Execute D-Link Network Assistant App.



3. Click Refresh button to search target switch.



4. Move mouse to target device entry, then click "Upgrade firmware" button into upgrade firmware page.



- Click Browse button and select the firmware file (Model name- FW version .hex) on your local hard drive.

The screenshot displays the 'Upgrade firmware' dialog box for a switch with IP 10.90.90.90. The current firmware version is V1.15.005. The dialog offers two options: 'Update firmware using a local file' and 'Update firmware using a local file'. The 'Update firmware using a local file' option is selected, and the 'Browse' button is circled in red. The 'Upgrade now' button is also circled in red.

Type / Status	Auth.	System Name	IP Address	MAC	Model	SNMP	FW Ver.	SN
Switch			10.90.90.90	22-00-00-2b-3c-00	DXS-1210-10TS	Off	V1.15.005	FF00000062405

Upgrade firmware (10.90.90.90)

Current firmware version

V1.15.005

Update firmware using a local file

Drag & drop firmware file here or [browse](#)

Current firmware version

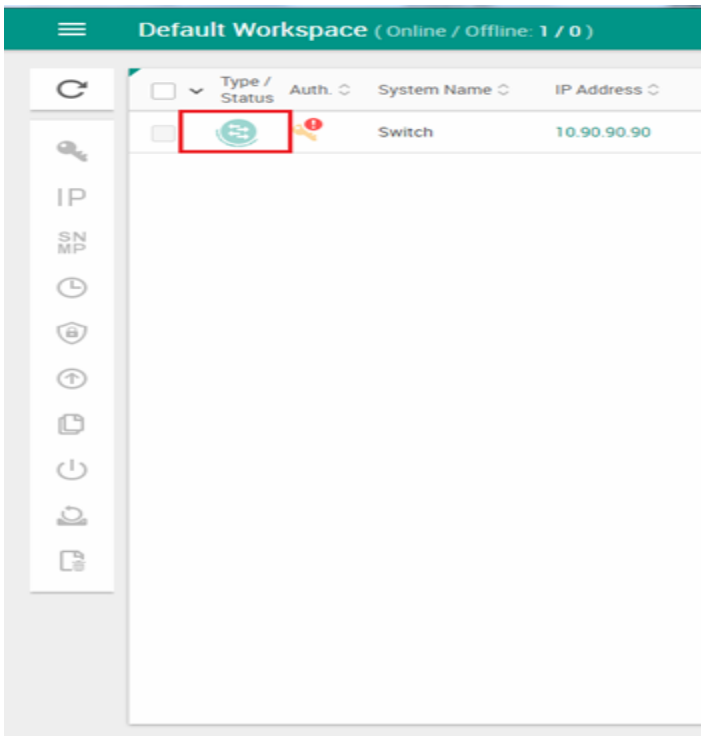
V1.15.005

Update firmware using a local file

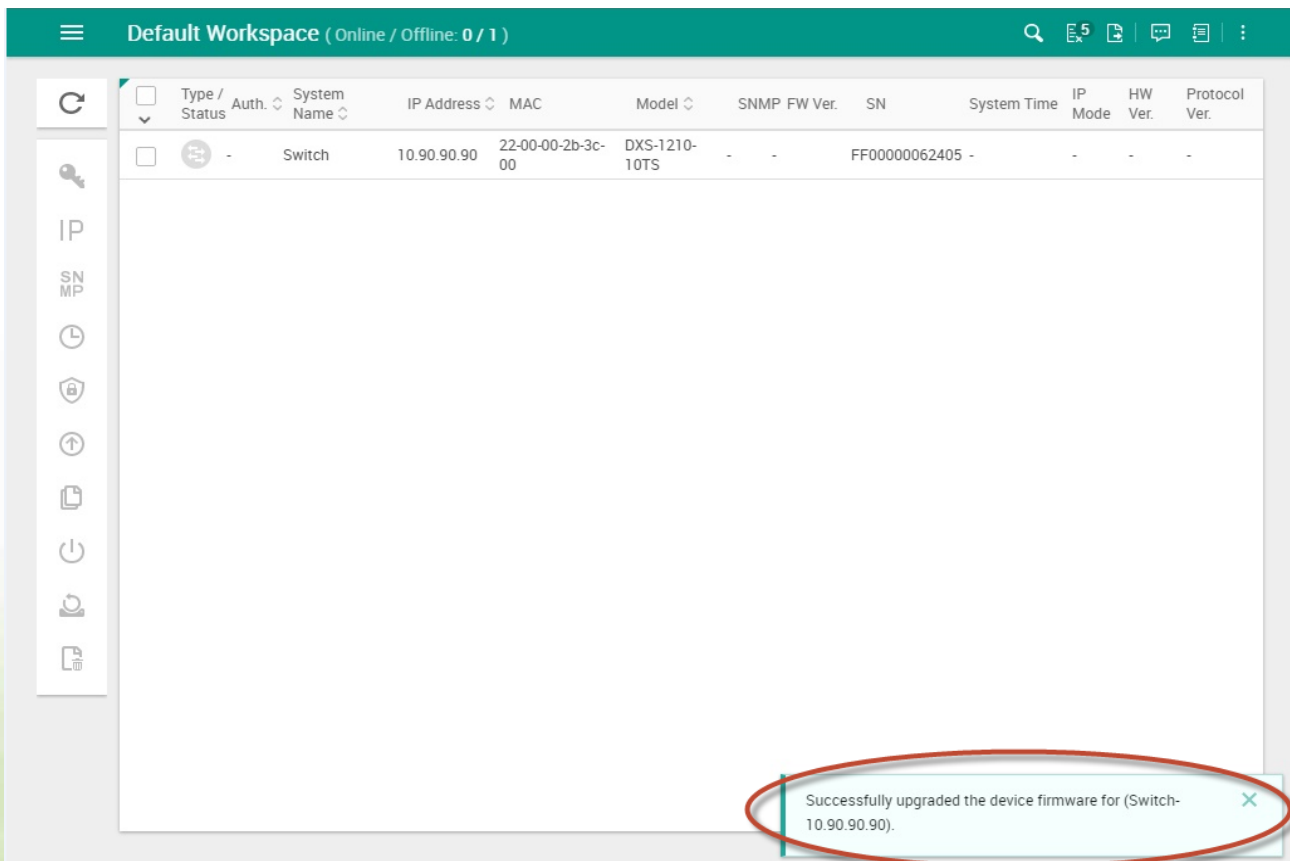
Firmware file: [DXS-1210-SERIES-V1-15-005-FW.hex](#)

Cancel [Upgrade now](#)

6. Wait until firmware upgrade finished.



7. The DNA pop an information to notify firmware upgrade status. Also can get firmware upgrade status from "Device journey" page.



The screenshot displays the 'Default Workspace' interface for a D-Link switch. On the left, a table lists device details:

Type / Status	Auth.	System Name	IP Address	MAC	Model	SNMP	FW Ver.	SN
Switch			10.90.90.90	22-00-00-2b-3c-00	DXS-1210-10TS	Off	V1.15.005	FF00000062405

On the right, the 'Device journey (10.90.90.90)' panel shows a timeline of events for 'Today':

- 1:18 PM** - **Firmware upgrade**
To version : copy3_copy2_copy1_DXS-1210-SERIES-V1-15-005-FW.hex
- 1:12 PM** - **Firmware upgrade**
To version : copy1_DXS-1210-SERIES-V1-15-005-FW.hex
- 1:07 PM** - **Change password**
Change the password of admin
- 1:06 PM** - **Management**
Move back to (Workspace: Default Workspace)
- 1:06 PM** - **Management**
Move to "Ignore list" (Workspace: Default Workspace)

At the bottom of the journey panel, the date range is set to 'From 2017-05-19 To 2017-06-19'. The 'Firmware upgrade' event at 1:18 PM is circled in red in the original image.

New Features:

Note:

V1.15.005 is NOT BACKWARD COMPATIBLE to A1 hardware version, please DON'T INSTALL V1.15.005 FW into A1 switches.

Models	Firmware Version	New Features
DXS-1210-10TS DXS-1210-12TC DXS-1210-12SC	V1.15.005	First Release. Please refer to the datasheet and manual for detailed functions support information.

Changes of MIB :

For detailed changes of MIB content, please refer to the modification history in each MIB file.

Models	Firmware Version	MIB File	New Features
DXS-1210-10TS	V1.15.005	DXS-1210-10TS-AX-V1.15.005.mib	First Release
DXS-1210-12TC	V1.15.005	DXS-1210-12TC-AX-V1.15.005.mib	First Release
DXS-1210-12SC	V1.15.005	DXS-1210-12SC-AX-V1.15.005.mib	First Release

Changes of Command Line Interface:

The section below only shows command line changes that may bring backward compatibility issues with configuration settings for previous version of firmware.

Any new feature commands that do not have backward compatibility issues are not included in the below section.

Models	Firmware Version	Changes
DXS-1210-10TS DXS-1210-12TC DXS-1210-12SC	V1.15.005	First Release

Problem Fixed:

Models	Firmware Version	Problems Fixed
DXS-1210-10TS DXS-1210-12TC DXS-1210-12SC	V1.15.005	First Release

Known Issues:

Models	Firmware Version	Issues	Workaround
DXS-1210-10TS DXS-1210-12TC DXS-1210-12SC	V1.15.005	None	None

Related Documentation:

- DXS-1210 Series Getting Started Guide
- DXS-1210 Series A2 User Manual v1.30
- DXS-1210 Series A2 CLI User Manual v1.00(WW)