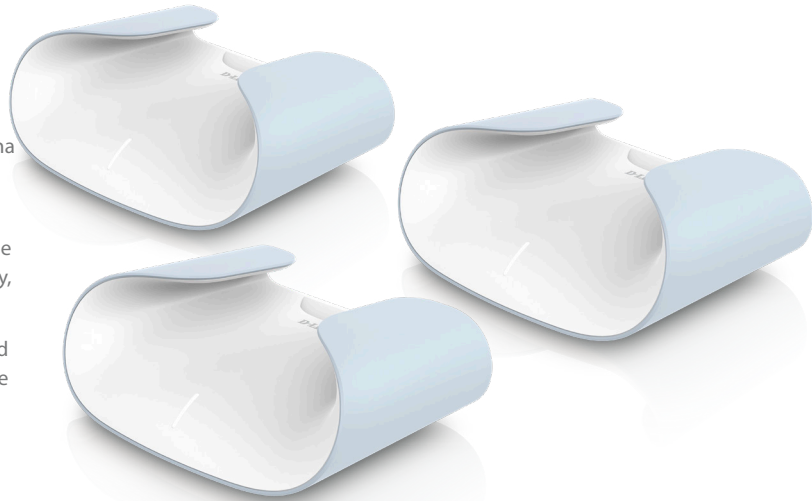


AQUILA PRO AI

AX 6000 Wi-Fi 6 Smart Mesh System M60-3PK

Smart Wi-Fi, Smart Life

- **Eco-friendly Design:** With a housing made from post-consumer recycled materials and delivered in sustainable packaging, the M60 was designed to reduce its environmental impact
- **Rapid Connectivity:** Revel in speeds up to 6Gbps¹ with an extra antenna on the faster 5GHz band, assuring seamless video streaming, video conferencing, and smooth gaming
- **Uninterrupted Wi-Fi Everywhere:** Enjoy robust 360° spherical coverage courtesy of a sophisticated antenna design and advanced AI technology, ensuring fast and consistent Wi-Fi in every corner of your home
- **Scale-as-you-need Mesh:** Future proof your network and easily expand your coverage by adding more AQUILA PRO AI devices to create a whole home Mesh network
- **Ultra-Fast Gigabit Wired Connection:** 4x Gigabit Ethernet LAN ports and 1x 2.5Gbps Ethernet WAN port allow for high-speed wired connectivity (per M60 Router) allow you to make fast and reliable connections to wired devices like smart TVs, gaming PCs and more
- **Help Protect Your Home Network:** Help keep your family safer online with our premium home network security features like Advanced Parental Controls, ETSI EN 303 645 cybersecurity standards and WPA3 encryption
- **Setup and Management Simplified:** The intuitive AQUILA PRO AI app helps guide you through setup and monitors your network to help you keep it running at peak performance



3 PACK
Coverage up to
740m²



360° Spherical Coverage

Advanced antenna design ensures stronger coverage and faster speeds



AI Mesh Optimiser

Auto path optimisation and self-healing capabilities for seamless connections



Ultra-Fast Speed up to 6Gbps

Superior Wi-Fi 6 performance for 8K streaming, gaming and video calls simultaneously



AI-Powered Intelligent Wi-Fi

Automatically keeps you on the optimal channel to eliminate interference



2.5Gbps WAN Port

2.5Gbps High Speed Internet WAN port supports the very fastest connections to your ISP



Premium Network Security Features

Help safeguard your network with Parental Controls and the latest WPA3 Encryption



Innovative Aesthetic Design

Feather-patterned ventilation design and optional wall-mount installation



Eco-Friendly Design

Crafted with a post-consumer recycled casing to minimise environmental impact

Technical Specifications

Per M60 Router

General

Device Interfaces	<ul style="list-style-type: none"> • 4 x Gigabit Ethernet LAN ports • 1 x 2.5Gbps Ethernet WAN port • 1 x WPS button • 1 x Reset button 	<ul style="list-style-type: none"> • 1 x Power connector • 1 x Power on/off button • 1 x LED on/off
LED	Power/Status/WPS	
Antenna Type	• 4 x 2.4GHz internal antennas	• 4 x 5GHz internal antennas
Wi-Fi Data Rate ¹	• 2.4GHz up to 1148Mbps	• 5GHz up to 4804Mbps
IEEE Standard	• IEEE 802.11ax/ac/n/g/b/k/v/a/h	• IEEE 802.3u/ab/bz
WAN Type	<ul style="list-style-type: none"> • Static IP • Dynamic IP • PPPoE • PPTP 	<ul style="list-style-type: none"> • L2TP • DS-Lite • 802.1p & 802.1q VLAN tagging and priority bit • Concurrent sessions: 30000

Functionality

Security Protocol	<ul style="list-style-type: none"> • WPA/WPA2 - Personal • WPA2 - Personal 	<ul style="list-style-type: none"> • WPA2/WPA3 - Personal (WPS not supported) • WPA3 Only (WPS not supported)
Firewall	<ul style="list-style-type: none"> • DoS • Stateful Packet Inspection • Anti-spoofing checking 	<ul style="list-style-type: none"> • IP/MAC address filtering • 1 x DMZ
Mesh	D-Link Wi-Fi Mesh	
QoS	D-Link Intelligent QoS Technology	
Power Saving	Target Wake Time (TWT)	
Access Control	• Advanced Parental Controls	• Guest zone
Dynamic DNS	• No-IP DDNS	• Dyn DDNS
Protocols	• IPv4	• IPv6
Operation Modes	<ul style="list-style-type: none"> • Router mode • Extender mode 	• Bridge mode
VPN Pass-Through	<ul style="list-style-type: none"> • L2TP • PPTP 	• IPSec

Software

Device Management	• AQUILA PRO AI app (iOS and Android™)	• Web UI
Voice Assistants	• Amazon Alexa	• Google Assistant

Physical

Hardware version	A1	
Dimensions	226.7 x 163.8 x 79.6mm	
Weight	584g	
Power Input	12V / 2.5A	
Max Power Consumption	21.17W	
Operating Temperature	0 to 40°C (32 to 104°F)	
Storage Temperature	-20 to 65°C (-4 to 149°F)	
Operating Humidity	10% to 90% non-condensing	
Storage Humidity	5% to 95% non-condensing	
Certifications	<ul style="list-style-type: none"> • CE • FCC • IC 	<ul style="list-style-type: none"> • NCC • RCM

Ordering Information

M60-3PK	• AQUILA PRO AI AX6000 Wi-Fi 6 Smart Mesh System (3-Pack)	
Package Content	<ul style="list-style-type: none"> • 3 x AQUILA PRO AI AX6000 Wi-Fi 6 Smart Mesh Routers (M60) • 3 x Power Adapters • Ethernet Cable • Quick Start Guide • Warranty Information 	

¹ Maximum wireless signal rate derived from IEEE 802.11ax specifications. Network conditions and environmental factors, including volume of network traffic, building materials and construction, and network overhead, lower actual data throughput rate. Environmental factors may adversely affect wireless signal range. An 802.11ax client device is required to achieve maximum speeds and performance. All references to speed and range are for comparison purposes only.