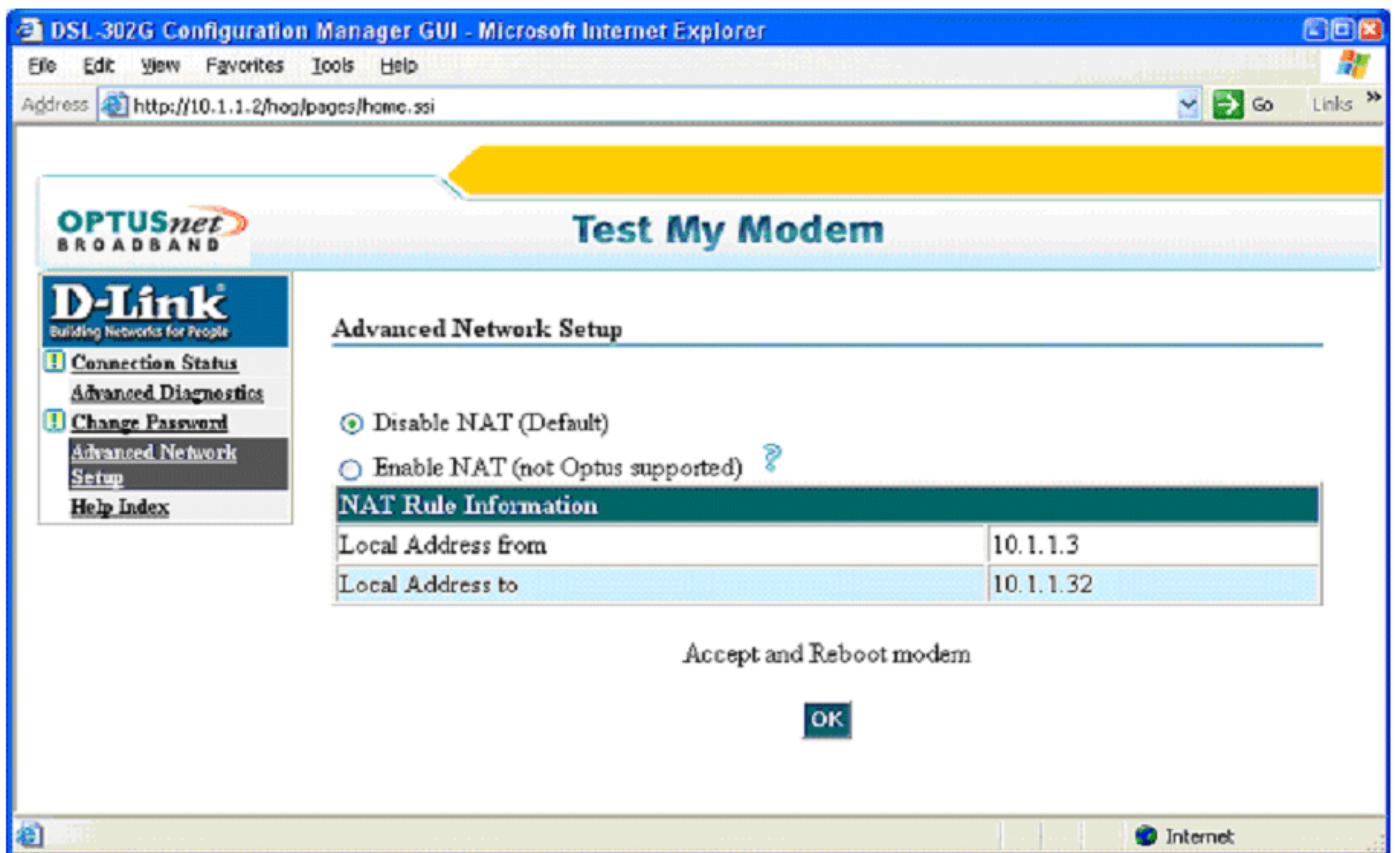


Connecting D-Link DI-series Router to DSL-302G (OptusNet ADSL) with NAT disabled (modem in transparent mode)

1. First connect the DSL-302G modem directly to your computer and configure it to ensure your Internet connection is working. If you are having any problems setting up the Optus-provided DSL-302G modem, you will need to contact Optus ADSL support line (**1300 309 333**).
2. After you have confirmed that your Internet connection is set up and you can browse, log into the modem again: open Internet Explorer and type <http://10.1.1.1> (if you are connecting to the modem via USB type <http://10.1.1.2>).
3. Click on “**Advanced Network Setup**” in the menu on the left and make sure “**Disable NAT**” option is selected. Click on **OK** to save settings.



4. Connect the DSL-302G to the WAN port of the Router (e.g. D-Link DI-series). Make sure you are getting a link light on the WAN port of the router.
5. Connect your PC to one of your Router's LAN ports.
6. Log into the Router's Web Configuration page (usually <http://192.168.0.1>). If you are having troubles logging into the router please refer to **Appendix A** at the end of this document.
7. After logging into the router select WAN port settings and set it to Dynamic IP Address. In our example with DI-series router select **WAN** in the menu on the left. Select **Dynamic IP Address**.

Optional setting: **Primary DNS Address** and **Secondary DNS Address**: whichever your provider is using in your area (Optus in NSW uses: 203.2.75.132 and 198.142.0.51).

The screenshot shows the router's web configuration interface. On the left sidebar, there are buttons for 'Wizard', 'Wireless', 'WAN' (highlighted), 'LAN', and 'DHCP'. The main content area has a navigation bar with 'Home', 'Advanced', 'Tools', 'Status', and 'Help'. Under 'WAN Settings', there is a message: 'Please select the appropriate option to connect to your ISP.' The options are:

- Dynamic IP Address: Choose this option to obtain an IP address automatically from your ISP. (For most Cable modem users)
- Static IP Address: Choose this option to set static IP information provided to you by your ISP.
- PPPoE: Choose this option if your ISP uses PPPoE. (For most DSL users)
- Others: PPTP and BigPond Cable
 - PPTP (for Europe use only)
 - BigPond Cable (for Australia use only)

 Below this, the 'Dynamic IP' section contains:

- Host Name: D-Link (optional)
- MAC Address: 00 - 40 - 05 - BE - B1 - 5A (optional). There is a 'Clone MAC Address' button.
- Primary DNS Address: 203.2.75.132
- Secondary DNS Address: 198.142.0.51 (optional)
- MTU: 1500

 At the bottom right, there are three buttons: 'Apply' (with a green checkmark), 'Cancel' (with an orange X), and 'Help' (with a red plus sign).

8. Click on **Apply** to save settings. You may need to reboot your computer.

PLEASE NOTE:

OptusNet ADSL service provides PPP connection where Subnet Mask is 255.255.255.255. Not all routers support this type of connection. If your router does not support this type of connection you will need to use DSL-302G in NAT mode (see setup guide on our WEB site:

http://www.dlink.com.au/tech/drivers/files/modems/DSL-302G_NAT_router.zip)

The following routers have been tested and proved to work fine with Optus PPP connection (when DSL-302G modem has NAT disabled):

DI-614+ firmware ver. 2.27 and above

DI-624 firmware ver. 1.36 and above

DI-624+ firmware ver. 1.15 and above

DI-704P firmware ver. 3.01b6 and above

DI-784 firmware ver. 3.01 and above

DI-804HV firmware ver. 1.36 and above

DI-808HV firmware ver. 1.36 and above

DI-824VUP+ firmware ver. 1.00 and above

Appendix A

How to Setup Your Computer and Access the Router

First set your computer up to **obtain IP address automatically**:

- in Win95/98 - Control Panel > Network > TCP/IP (linked to your network card) > Properties.
- in Windows 2000/XP – Control Panel > Network Connections > Local Area Connection > Properties > Internet Protocol TCP/IP > Properties.

Connect your computer to the router (using straight-through cable). Make sure you are getting a link light on the corresponding router's Ethernet port. Restart PC. After rebooting check the IP address that computer has got:

- in Win95/98/ME - go to Start > Run > winipcfg > OK > select your adapter and look under IP Address.
- in Win2000/XP go to Start > Run > cmd > OK > ipconfig /all > look for IP Address.

It should be something like 192.168.0.x

If it is not - do the following:

- in Win95/98 - go to Start > Run > winipcfg > OK > select your adapter and press *Release All* and then *Renew All*.
- in Win2000/XP go to Start > Run > cmd > OK > ipconfig /release (hit Enter) > ipconfig /renew (hit Enter)

If your computer is not getting the desired IP address you can try to set it up manually. Under TCP/IP properties set your computer to use the following IP settings:

IP address: 192.168.0.15

Subnet Mask: 255.255.255.0

Default Gateway: 192.168.0.1

DNS: (whichever your provider is using in your area (Optus in NSW uses: 203.2.75.132 and 198.142.0.51)

After the computer has got the right IP address you can log into the router:

Open Internet Explorer (on start-up Internet Explorer may try to open your homepage and display "Page can not be displayed" message, it is normal). In the address bar type the IP address of the router: <http://192.168.0.1> and press Enter. You will be prompted to enter username (admin) and password (leave this field blank). Click on OK to log into the router.

~ End of document ~