

Contents

Package Contents-----	1
Introduction -----	1
Getting To Know Your USB 2.0 MPEG 1/2/4 Video Converter -----	2
Features and Benefits -----	2
Recording Video to a Recordable Disc -----	3
Reference Table-----	3
Tutorial I (Quality-Oriented) -----	3
Step 1: Record Videos -----	3
Step 2: Convert Recorded Files-----	5
Step 3: Make a DVD/SVCD/VCD/DATA VCD -----	8
Tutorial II (Time-Savings Solution) -----	12
Step 1: Record and Convert Videos -----	12
Step 2: Make a VCD-----	14

Package Contents



Contents of Package

- D-Link DUB-AV200 USB 2.0 MPEG 1/2/4 Video Converter
- Power Adapter
- Driver/Video Editing Software on CD
- Quick Installation Guide

If any of the above items are missing, please contact your reseller.

System Requirements

- Pentium III 550MHz or Above
- Microsoft Windows XP, 2000, Me, 98SE
- One Available USB Port (USB 2.0 Recommended)
- VGA Card with 8MB RAM

Introduction

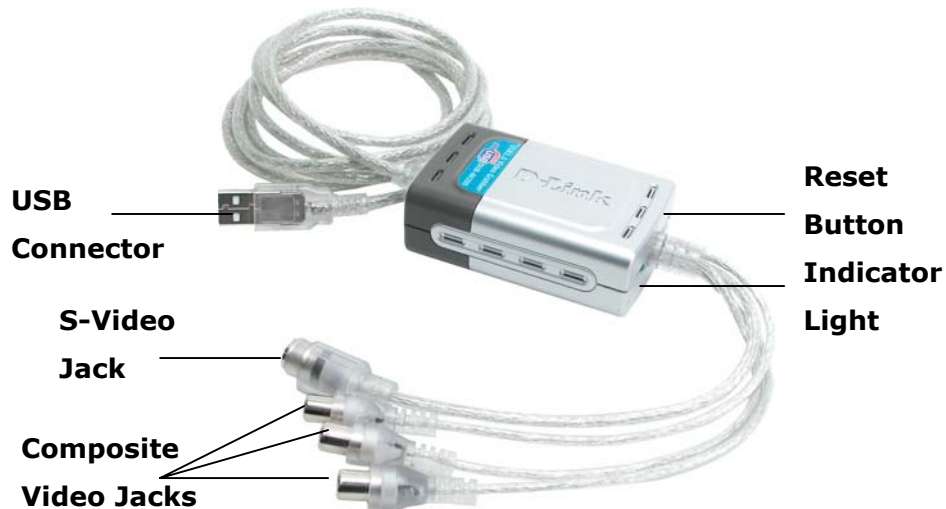
The D-Link DUB-AV200 is an advanced video-capture and display device which provides you with a “high quality PC Theater” solution. The D-Link DUB-AV200 allows you to capture 30 frames per second (fps) while giving you up to 704x480 resolution for a high quality video image on a PC or notebook using USB2.0. The DUB-AV200 captures CD quality stereo audio with a 16 bit, 48KHz sampling rate and provides audio/video synchronization. The “snapshot” function lets you catch 704x480 still images from your video source.

With the user-friendly program, **DVD Plus**, you can easily transfer the captured audio/video

bit stream into other standard formats such as AVI, MPEG4,VCD and DVD.

Please read the information below which is aimed to assist you in using the **DVD Plus** software with your **DUB-AV200 Video Converter**.

Getting To Know Your USB 2.0 MPEG 1/2/4 Video Converter

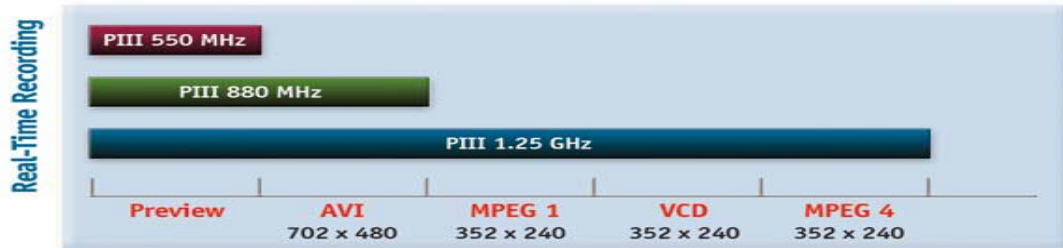


Features and Benefits

- Professional Snap-Shot Still Image Capture
- Analog to Digital Video Convert
- 704 x 480 (NTSC) @ 30fps High Quality Resolution
- 704 x 576 (PAL) @ 25fps High Quality Video
- Audio Capture & A/V Synchronization Function
- Saturation/Contrast/Hue/Brightness Adjustment
- Create MPEG Movies
- Direct Burn-to-Disc of Recorded MPEG1 /2 with CD/DVD Burner
- Video Editing Software Include

Recording Video to a Recordable Disc

In the following two tutorials, you will be guided through the procedure of transferring captured video files to a recordable compact disc. **TUTORIAL I** illustrates the 3-step process to capture video. **TUTORIAL II** presents a 2-step operation to make a Video CD (VCD). Please read this manual to learn more about recording video to a recordable disc using your versatile DUB-AV200.



Tutorial I (Quality-Oriented)

This tutorial condenses the previously complex task of making a video CD or DVD of your own into the following three-step process via using **DVD Plus**.

1. Recording video clips via **DVR**
2. Converting recorded files via **MPEG Encoder**
3. Making a CD via **DVD Maker**

Follow the sequence of the three applications above (found on the application bar on the **DVD Plus** software) to easily create your own video CD or DVD.

Step 1: Record Videos


The process of capturing video from the input video source is:

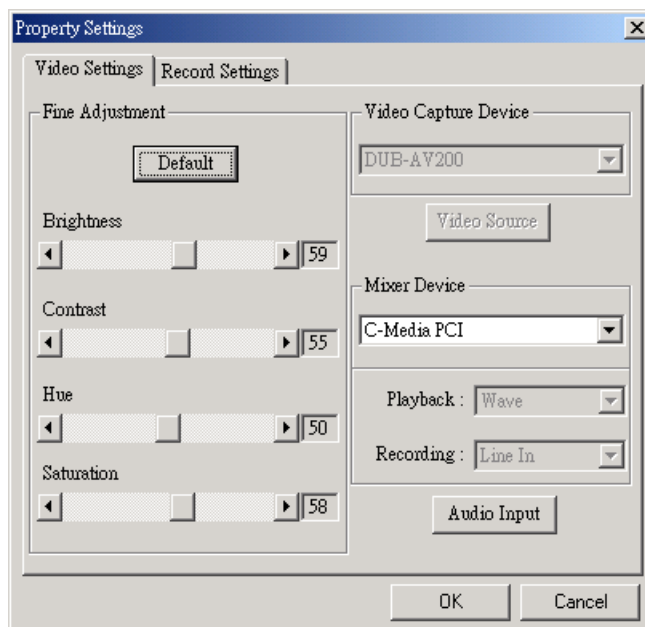
- a) Launch **DVR**.
- b) Choose **Property Settings** to adjust the advanced configuration for recording (if needed.)
- c) Select an input source.
- d) Click the **REC** button to start recording and click it again to stop recording.
- e) The captured video clips have been recorded to your computer's hard drive..

Step by step instructions to start recording:

1. Double-click **DVR** on the application bar of your **DVD Plus** interface to launch **DVR**.



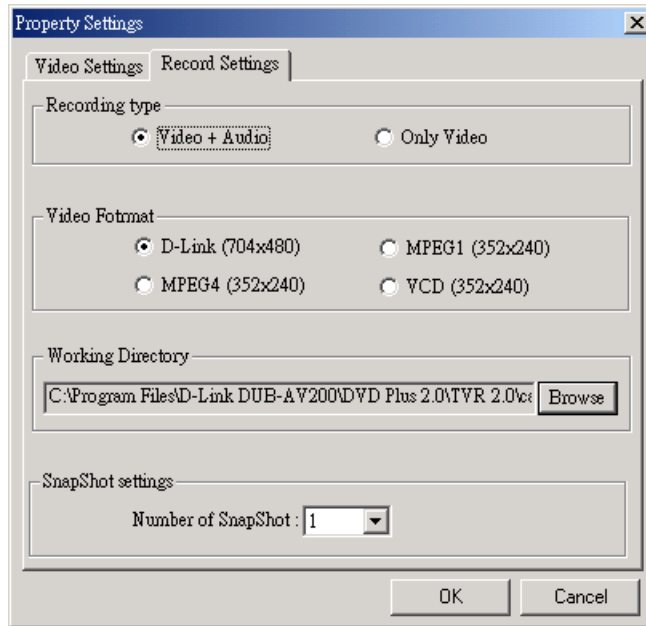
2. Choose **Property Settings**  from the navigation panel to open the **Property Settings** dialog box, where you adjust the recording settings.
3. On the **Video Settings** tab, drag the **Brightness**, **Contrast**, **Hue**, and **Saturation** sliders in the **Fine Adjustment** field to make adjustments of the video image. You can choose **Default** to accept the default video settings.




4. Click the **Record Settings** tab to adjust the following configuration settings:
 - i. Specify the **Recording type** as **Video + Audio**.
 - ii. Define the video format as **D-Link (704x480)**, **MPEG1 (352x240)**, **MPEG4 (352x240)**, or **VCD (352x240)** for the recorded video clips according to your

needs. You can convert a recorded file into another file format layer by using the **MPEG Encoder** afterwards.

- iii. Enter the location where the recorded video clips will be saved by clicking **Browse** in the **Working Directory** field. In the opened **Change Folder** dialog box, specify the intended directory and then click **OK** to save the file.
- iv. Then click **OK** to activate all the settings and close the **Property Settings** dialog box.



5. Select input source as **Composite** or **S-Video** on the left side of the navigation panel.
6. Press  to start recording and press it again to stop recording. The recorded file has been added to the system and can be accessed from the **Video Folder** window after stopping the recording.

Step 2: Convert Recorded Files

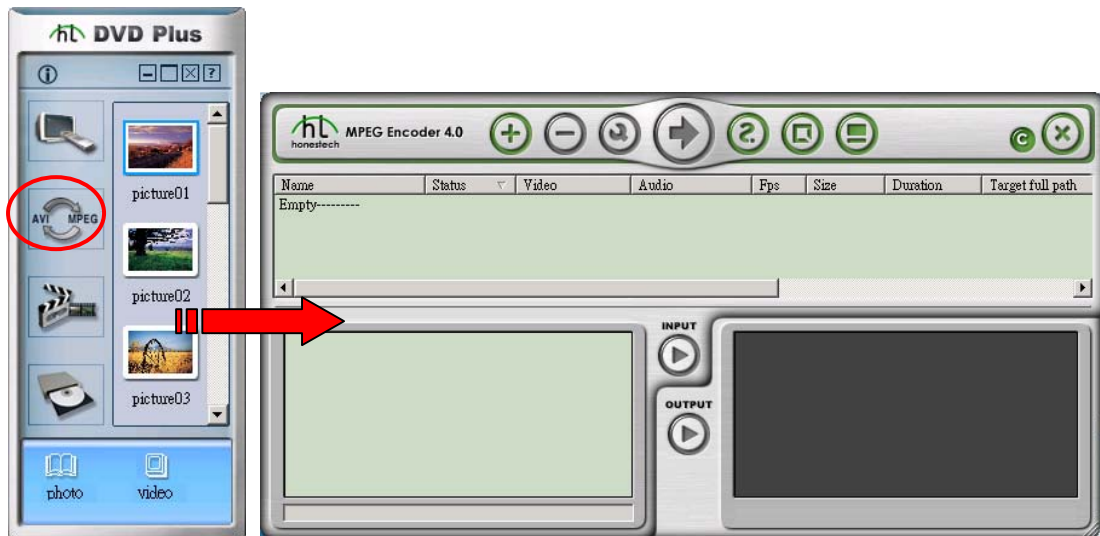
The recorded video clip needs to be converted into video formats to be played, and **MPEG Encoder** performs the conversion of video files into MPEG-1 or MPEG-2 files. With a few mouse clicks, video files created in AVI, DV-AVI, MPEG-1, MPEG-2, ASF, WMV, or DIVX formats can be transferred to MPEG 1 or 2 format.


The process of converting video files is:

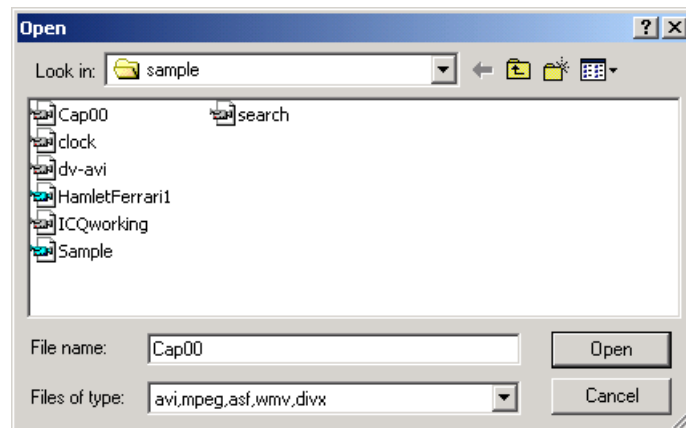
- a) Launch **MPEG Encoder**.
- b) Input the video files you intend to encode.
- c) Specify the desired file format.
- d) Convert the input files.

Converting Video Files Using MPEG Encoder:

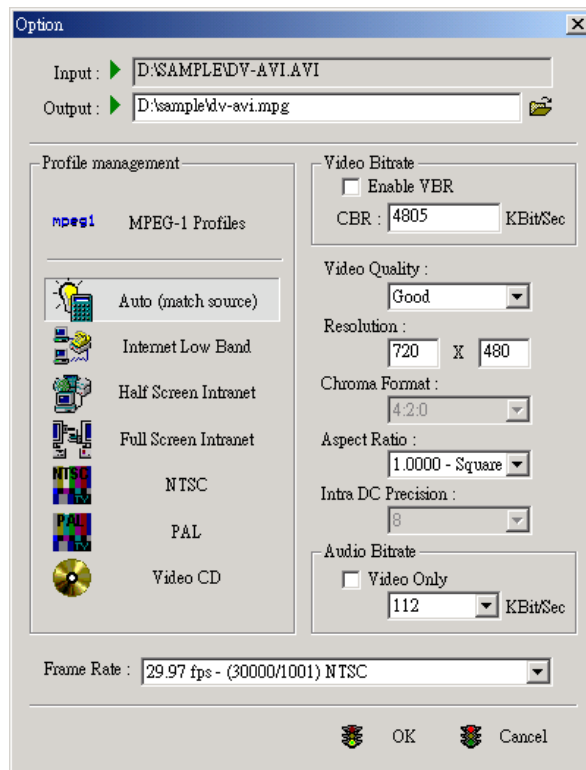
1. Double-click **MPEG Encoder** on the application bar of your **DVD Plus** interface to launch **MPEG Encoder**.



2. Choose the **Add** button  on the **MPEG Encoder** interface to open the **Open** window, from which you can indicate the directory and video files you want to open for encoding. Click **Open** when you are done.

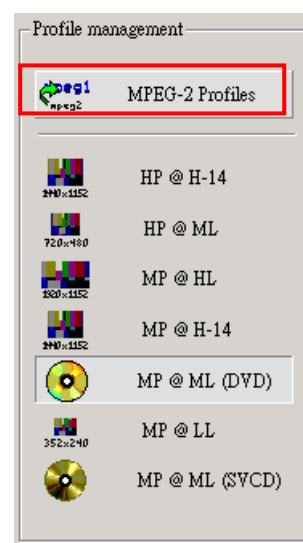
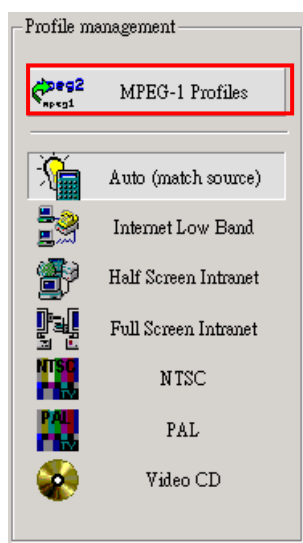


3. After choosing the **Open** button in the **Open** window, the **Option** dialog box will be displayed as shown in the screen below:



Enter the video file name in the **Input** field. Click the folder icon on the right of the **Output** field to set a location where the converted file will be stored later. To change the file name for the encoded file, you can directly edit a new name in the **Output** box, or keep the default location and file name.



4. In the **Profile management** pane, define the target file format as **MPEG-1 Profiles** or **MPEG-2 Profiles** for the chosen video file. Next, click one option from the submenu of the preferred profile item. The screens below illustrate the differences between the submenus of both profiles.



The list below provides you general information on corresponding relationships between a specified profile and a type of disc:

VCD (Video Compact Disc)	For MPEG-1 video of good quality that you can play on your VCD or DVD player.
DVD (Digital Versatile Disc)	For MPEG-2 video of high quality that you can play on your DVD player.
SVCD (Super Video Compact Disc)	For MPEG-2 video of high quality that you can play on your VCD or DVD player.

5. Please note that the settings of the **Video Quality** on the right pane of the **Option** dialog box will vary according to the settings you chose in the **Profile management** pane. However, you still can define these features according to your specific needs.
6. Before clicking **OK** to activate these settings, make sure the state of **Frame Rate** is **29.97fps –(30000/1001) NTSC**.
7. The chosen file will be displayed in the upper pane of the **MPEG Encoder**'s interface.

Click the file name you want to encode and then choose the **Encoding** button  to start converting the file into desired file format. The **Encoding** button becomes the **Stop** button . During the process of encoding, you may choose the **Stop** button if to terminate the conversion.

8. When the **Status** column in the upper pane displays **Done**, the process of encoding is complete.

Step 3: Make a DVD/SVCD/VCD/DATA CD

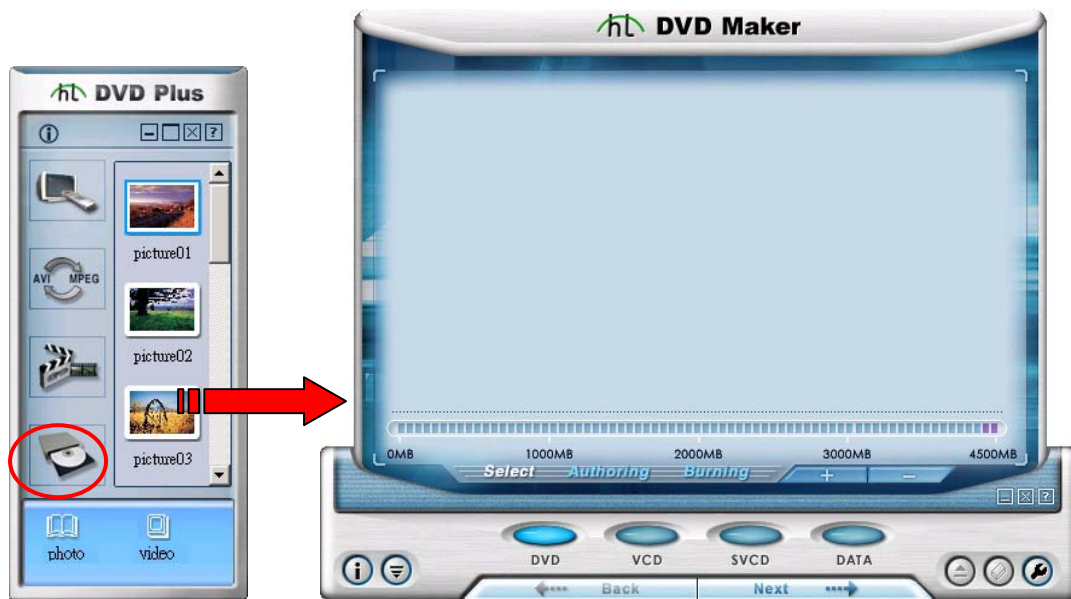
The last step to create a video CD or DVD is to transfer (or “burn”) your encoded material to a recordable disc. Before starting the disc-burning process, if you wish to have your prepared video clips edited, launch **MPEG Editor** from the application bar.

Here is a quick look at a typical disc burning session:

- a) Launch **DVD Maker**.
- b) Define a disc format.
- c) Add video files.
- d) Design a menu if you are making a DVD.
- e) Burn the videos to the disc.



Burning Your Video File to a Disc:

1. Double-click **DVD Maker** on the application bar of your DVD Plus's interface to launch **DVD maker**.




- Specify a disc type by clicking the **DVD**, **VCD**, **SVCD**, or **DATA** icon below the thumbnail window.



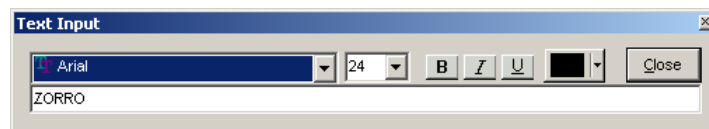
- Click  to open the **Open** window. From the window, choose the desired video files and then click **Open** to add them to the thumbnail window.
- When you have gathered all the intended video items, select  to proceed.



Note: If you chose to make a DVD at step 2, you will be led to the step of **Authoring** a menu template, which will be shown as the startup page while playing your DVD on a DVD player. Check Step 5 to proceed. Otherwise, please skip to Step 6 to start burning a CD.

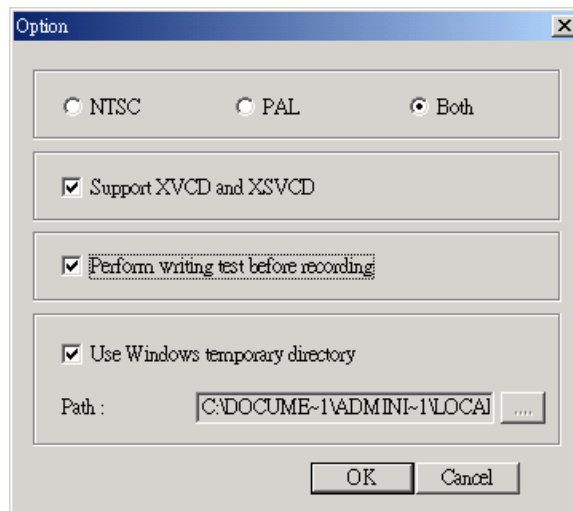
- Select a menu template that you want to change on the **Page** pane, and choose a template from the images displayed below the thumbnail window. You can click the  button to add any existing image on your hard disk to the menu template.




6. To edit the menu title or the video title, double-click the text in the thumbnail window to open the **Text Input** window. Type a name in the blank field as the title. You may change the text style according to your needs. Click **Close** to exit the **Text Input** window when you are done.





7. If necessary, select  to open the Option dialog box, in which you may make more advanced settings for the burning session.
 - i. Determine the video type as **NTSC**, **PAL**, or **Both**.
 - ii. Select **Support XVCD and XSVCD** if needed. Note that both formats are non-standard deviations of VCD and SVCD. A standard DVD player is not capable of playing these formats.
 - iii. The **Perform writing test before recording** command will check if the data is acceptable before actually burning the file to disc.
 - iv. You may specify a location for having the source files saved on the hard disk by clicking ; otherwise, check **Use Windows temporary directory** to store the files in the defaulted location.
 - v. When done, click **OK** to continue.



8. Click  to continue when you are satisfied with the menu template and the titles.
9. Select your burner/recorder from the **Device** list box.



10. Click on the **Eject** button  to insert a blank recordable disc into the recorder.
11. Click  to begin burning your CD. When the process of burning is complete, the recorded disc will be ejected from the drive.

Tutorial II (Time-Savings Solution)

Tutorial II will guide you through a 2-step process of making a VCD of your own. You will find creating a VCD becomes easier and faster than ever. Without converting the recorded video files via **MPEG Encoder**, you may directly convert the video clips while recording them. This two-step process is listed below:

1. Recording and converting video clips via **DVR**
2. Making a VCD via **DVD Maker**

Please read the following instructions to become thoroughly familiar with creating a VCD.

Step 1: Record and Convert Videos


The process of capturing and converting video from the input video source is:

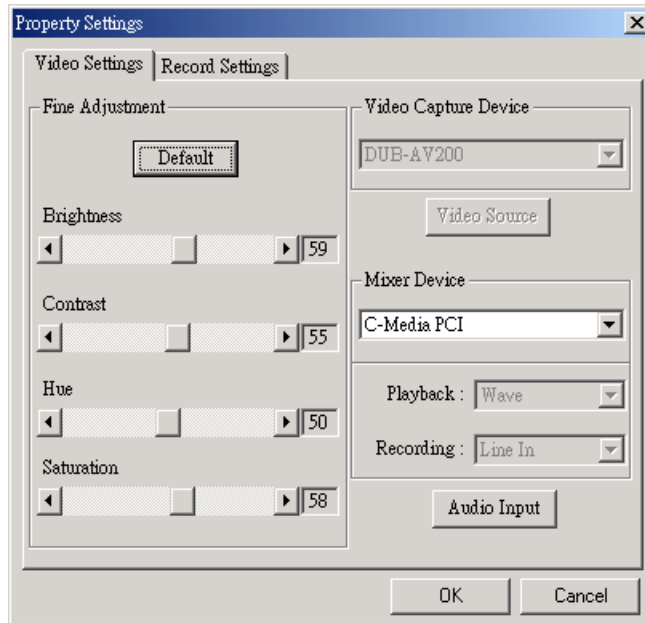
- a) Launch **DVR**.
- b) Choose **Property Settings** to adjust settings for recording and converting.
- c) Select an input source.
- d) Click the **REC** button to start recording and click it again to stop.
- e) The captured video clips have been recorded to your system.

Step-by-step instructions to start recording:

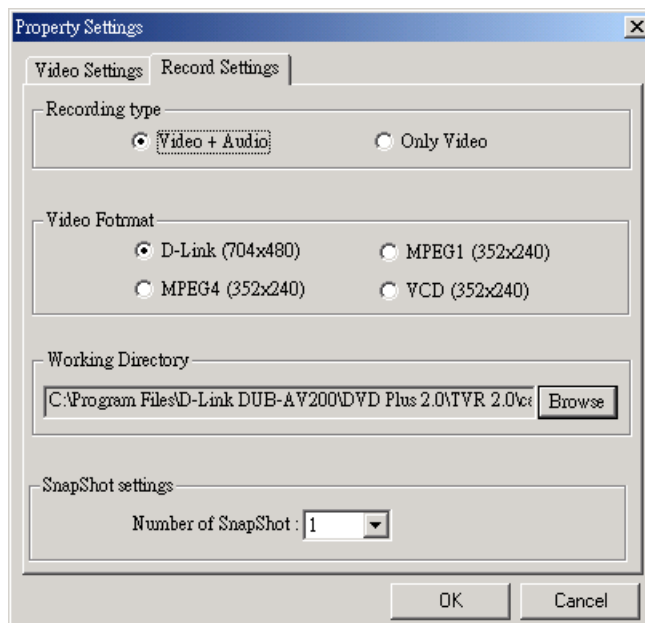
1. Double-click **DVR** on the application bar of your DVD Plus's interface to launch **DVR**.




2. Choose **Property Settings**  from the navigation panel to open the **Property Settings** dialog box.
3. On the **Video Settings** tab of the **Property Settings** dialog box, manually drag the **Brightness**, **Contrast**, **Hue**, and **Saturation** sliders in the **Fine Adjustment** field to make adjustments to the video image, or you may choose **Default**.



- f) Click the **Record Settings** tab to adjust the following configuration settings:
- i. Specify the **Recording type** as **Video + Audio**.
 - ii. In the **Video Format** field, indicate the target video format of the recorded video clips as **VCD (352x240)**. The recorded video files will then be saved in the VCD format.
 - iii. Click **Browse** in the **Working Directory** field to specify a location to save the recorded video clips. In the opened **Change Folder** dialog box, select the intended directory and click **OK**.
 - iv. Click **OK** to activate the new settings and to exit the **Property Settings** dialog box.



2. Select input source as **Composite** or **S-Video** on the left side of the navigation panel.

3. Press  to start recording and press it again to stop recording. Within a few seconds after the recording stops, the recorded file is displayed in the **Video Folder** window.

Step 2: Make a VCD

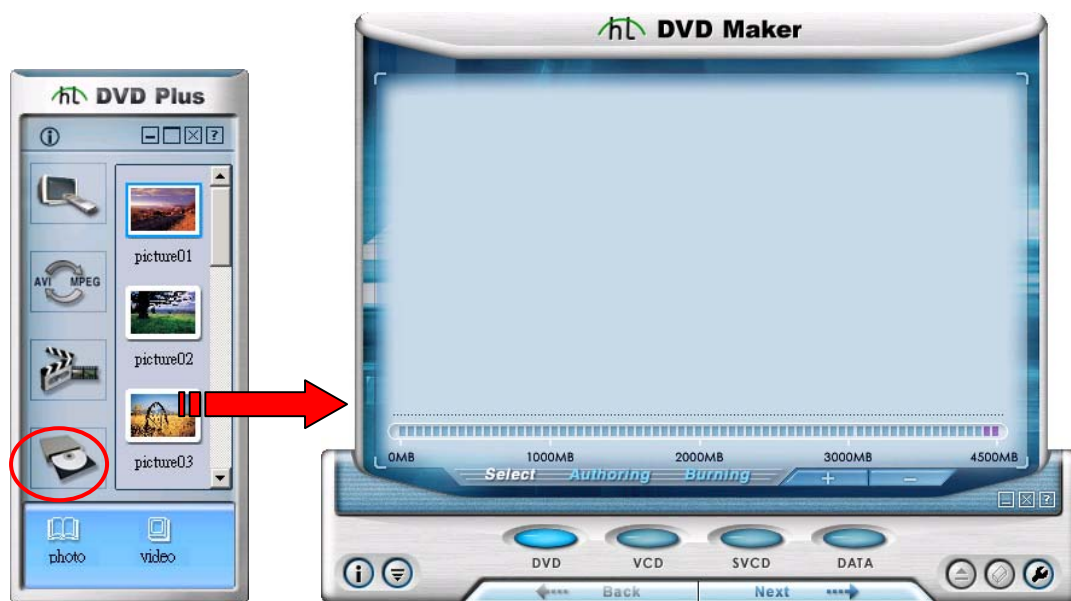
Now you can burn the recorded video clips in VCD format to a disc via **DVD Maker**.

The VCD burning session is outlined as below:

- a) Launch **DVD Maker**.
- b) Define disc format as VCD.
- c) Add video files.
- d) Burn the videos to the disc.



Step by step instructions to Make a VCD:

1. Double-click **DVD Maker** on the application bar of the **DVD Plus** interface to launch **DVD Maker**.





2. Specify the disc type as **VCD**.



3. Click  to open the **Open** window. From the window, choose the desired video files and then click **Open** to add them to the thumbnail window.
4. When you have gathered all the intended video items, select  to proceed.
5. Select your burner/recorder from the **Device** list box.



6. Choose the **Eject** button  to insert a CD-R disc into the recorder.
7. Click  to begin burning your VCD. When the process of burning is finished, the disc will be ejected.

LIMITED WARRANTY

D-Link provides this limited warranty for its product only to the person or entity who originally purchased the product from D-Link or its authorized reseller or distributor.

Limited Hardware Warranty: D-Link warrants that the hardware portion of the D-Link products described below ("Hardware") will be free from material defects in workmanship and materials from the date of original retail purchase of the Hardware, for the period set forth below applicable to the product type ("Warranty Period") if the Hardware is used and serviced in accordance with applicable documentation; provided that a completed Registration Card is returned to an Authorized D-Link Service Office within ninety (90) days after the date of original retail purchase of the Hardware. If a completed Registration Card is not received by an authorized D-Link Service Office within such ninety (90) period, then the Warranty Period shall be ninety (90) days from the date of purchase.

<i>Product Type</i>	<i>Warranty Period</i>
Product (excluding power supplies and fans)	One (1) Year
Power Supplies and Fans	One (1) Year
Spare parts and spare kits	Ninety (90) days

D-Link's sole obligation shall be to repair or replace the defective Hardware at no charge to the original owner. Such repair or replacement will be rendered by D-Link at an Authorized D-Link Service Office. The replacement Hardware need not be new or of an identical make, model or part; D-Link may in its discretion may replace the defective Hardware (or any part thereof) with any reconditioned product that D-Link reasonably determines is substantially equivalent (or superior) in all material respects to the defective Hardware. The Warranty Period shall extend for an additional ninety (90) days after any repaired or replaced Hardware is delivered. If a material defect is incapable of correction, or if D-Link determines in its sole discretion that it is not practical to repair or replace the defective Hardware, the price paid by the original purchaser for the defective Hardware will be refunded by D-Link upon return to D-Link of the defective Hardware. All Hardware (or part thereof) that is replaced by D-Link, or for which the purchase price is refunded, shall become the property of D-Link upon replacement or refund.

Limited Software Warranty: D-Link warrants that the software portion of the product ("Software") will substantially conform to D-Link's then current functional specifications for the Software, as set forth in the applicable documentation, from the date of original delivery of the Software for a period of ninety (90) days ("Warranty Period"), if the Software is properly installed on approved hardware and operated as contemplated in its documentation. D-Link further warrants that, during the Warranty Period, the magnetic media on which D-Link delivers the Software will be free of physical defects. D-Link's sole obligation shall be to replace the non-conforming Software (or defective media) with software that substantially conforms to D-Link's functional specifications for the Software. Except as otherwise agreed by D-Link in writing, the replacement Software is provided only to the original licensee, and is subject to the terms and conditions of the license granted by D-Link for the Software. The Warranty Period shall extend for an additional ninety (90) days after any replacement Software is delivered. If a material non-conformance is incapable of correction, or if D-Link determines in its sole discretion that it is not practical to replace the non-conforming Software, the price paid by the original licensee for the non-conforming Software will be refunded by D-Link; provided that the non-conforming Software (and all copies thereof) is first returned to D-Link. The license granted respecting any Software for which a refund is given automatically terminates.

What You Must Do For Warranty Service:

Registration Card. The Registration Card provided at the back of this manual must be completed and returned to an Authorized D-Link Service Office for each D-Link product within ninety (90) days after the product is purchased and/or licensed. The addresses/telephone/fax list of the nearest Authorized D-Link Service Office is provided in the back of this manual. **FAILURE TO PROPERLY COMPLETE AND TIMELY RETURN THE REGISTRATION CARD MAY AFFECT THE WARRANTY FOR THIS PRODUCT.**

Submitting A Claim. Any claim under this limited warranty must be submitted in writing before the end of the Warranty Period to an Authorized D-Link Service Office. The claim must include a written description of the Hardware defect or Software nonconformance in sufficient detail to allow D-Link to confirm the same. The original product owner must obtain a Return Material Authorization (RMA) number from the Authorized D-Link Service Office and, if requested, provide written proof of purchase of the product (such as a copy of the dated purchase invoice for the product) before the warranty service is provided. After an RMA number is issued, the defective product must be packaged securely in the original or other suitable shipping package to ensure that it will not be damaged in transit, and the RMA number must be prominently marked on the outside of the package. The packaged product shall be insured and shipped to D-Link, 53 Discovery Drive, Irvine CA 92618, with all shipping costs prepaid. D-Link may reject or return any product that is not packaged and shipped in strict compliance with the foregoing requirements, or for which an RMA number is not visible from the outside of the package. The product owner agrees to pay D-Link's reasonable handling and return shipping charges for any product that is not packaged and shipped in accordance with the foregoing requirements, or that is determined by D-Link not to be defective or non-conforming.

What Is Not Covered:

This limited warranty provided by D-Link does not cover:

Products that have been subjected to abuse, accident, alteration, modification, tampering, negligence, misuse, faulty installation, lack of reasonable care, repair or service in any way that is not contemplated in the documentation for the product, or if the model or serial number has been altered, tampered with, defaced or removed;

Initial installation, installation and removal of the product for repair, and shipping costs;

Operational adjustments covered in the operating manual for the product, and normal maintenance;

Damage that occurs in shipment, due to act of God, failures due to power surge, and cosmetic damage; and

Any hardware, software, firmware or other products or services provided by anyone other than D-Link.

Disclaimer of Other Warranties: EXCEPT FOR THE LIMITED WARRANTY SPECIFIED HEREIN, THE PRODUCT IS PROVIDED "AS-IS" WITHOUT ANY WARRANTY OF ANY KIND INCLUDING, WITHOUT LIMITATION, ANY WARRANTY OF MERCHANTABILITY, FITNESS FOR A PARTICULAR PURPOSE AND NON-INFRINGEMENT. IF ANY IMPLIED WARRANTY CANNOT BE DISCLAIMED IN ANY TERRITORY WHERE A PRODUCT IS SOLD, THE DURATION OF SUCH IMPLIED WARRANTY SHALL BE LIMITED TO NINETY (90) DAYS. EXCEPT AS EXPRESSLY COVERED UNDER THE LIMITED WARRANTY PROVIDED HEREIN, THE ENTIRE RISK AS TO THE QUALITY, SELECTION AND PERFORMANCE OF THE PRODUCT IS WITH THE PURCHASER OF THE PRODUCT.

Limitation of Liability: TO THE MAXIMUM EXTENT PERMITTED BY LAW, D-LINK IS NOT LIABLE UNDER ANY CONTRACT, NEGLIGENCE, STRICT LIABILITY OR OTHER LEGAL OR EQUITABLE THEORY FOR ANY LOSS OF USE OF THE PRODUCT, INCONVENIENCE OR DAMAGES OF ANY CHARACTER, WHETHER DIRECT, SPECIAL, INCIDENTAL OR CONSEQUENTIAL (INCLUDING, BUT NOT LIMITED TO, DAMAGES FOR LOSS OF GOODWILL, WORK STOPPAGE, COMPUTER FAILURE OR MALFUNCTION, LOSS OF INFORMATION OR DATA CONTAINED IN, STORED ON, OR INTEGRATED WITH ANY PRODUCT RETURNED TO D-LINK FOR WARRANTY SERVICE) RESULTING FROM THE USE OF THE PRODUCT, RELATING TO WARRANTY

SERVICE, OR ARISING OUT OF ANY BREACH OF THIS LIMITED WARRANTY, EVEN IF D-LINK HAS BEEN ADVISED OF THE POSSIBILITY OF SUCH DAMAGES. THE SOLE REMEDY FOR A BREACH OF THE FOREGOING LIMITED WARRANTY IS REPAIR, REPLACEMENT OR REFUND OF THE DEFECTIVE OR NON-CONFORMING PRODUCT.

GOVERNING LAW: This Limited Warranty shall be governed by the laws of the state of California.

Some states do not allow exclusion or limitation of incidental or consequential damages, or limitations on how long an implied warranty lasts, so the foregoing limitations and exclusions may not apply. This limited warranty provides specific legal rights and the product owner may also have other rights which vary from state to state.

Wichtige Sicherheitshinweise

1. Bitte lesen Sie sich diese Hinweise sorgfältig durch.
2. Heben Sie diese Anleitung für den spätern Gebrauch auf.
3. Vor jedem Reinigen ist das Gerät vom Stromnetz zu trennen. Verwenden Sie keine Flüssig- oder Aerosolreiniger. Am besten dient ein angefeuchtetes Tuch zur Reinigung.
4. Um eine Beschädigung des Gerätes zu vermeiden sollten Sie nur Zubehöerteile verwenden, die vom Hersteller zugelassen sind.
5. Das Gerät ist vor Feuchtigkeit zu schützen.
6. Bei der Aufstellung des Gerätes ist auf sicheren Stand zu achten. Ein Kippen oder Fallen könnte Verletzungen hervorrufen. Verwenden Sie nur sichere Standorte und beachten Sie die Aufstellhinweise des Herstellers.
7. Die Belüftungsöffnungen dienen zur Luftzirkulation die das Gerät vor Überhitzung schützt. Sorgen Sie dafür, daß diese Öffnungen nicht abgedeckt werden.
8. Beachten Sie beim Anschluß an das Stromnetz die Anschlußwerte.
9. Die Netzanschlußsteckdose muß aus Gründen der elektrischen Sicherheit einen Schutzleiterkontakt haben.
10. Verlegen Sie die Netzanschlußleitung so, daß niemand darüber fallen kann. Es sollte auch nichts auf der Leitung abgestellt werden.
11. Alle Hinweise und Warnungen die sich am Geräten befinden sind zu beachten.
12. Wird das Gerät über einen längeren Zeitraum nicht benutzt, sollten Sie es vom Stromnetz trennen. Somit wird im Falle einer Überspannung eine Beschädigung vermieden.
13. Durch die Lüftungsöffnungen dürfen niemals Gegenstände oder Flüssigkeiten in das Gerät gelangen. Dies könnte einen Brand bzw. Elektrischen Schlag auslösen.
14. Öffnen Sie niemals das Gerät. Das Gerät darf aus Gründen der elektrischen Sicherheit nur von autorisiertem Servicepersonal geöffnet werden.
15. Wenn folgende Situationen auftreten ist das Gerät vom Stromnetz zu trennen und von einer qualifizierten Servicestelle zu überprüfen:
 - a – Netzkabel oder Netzstecker sind beschädigt.
 - b – Flüssigkeit ist in das Gerät eingedrungen.
 - c – Das Gerät war Feuchtigkeit ausgesetzt.
 - d – Wenn das Gerät nicht der Bedienungsanleitung entsprechend funktioniert oder Sie mit Hilfe dieser Anleitung keine Verbesserung erzielen.
 - e – Das Gerät ist gefallen und/oder das Gehäuse ist beschädigt.
 - f – Wenn das Gerät deutliche Anzeichen eines Defektes aufweist.
16. Bei Reparaturen dürfen nur Originalersatzteile bzw. den Originalteilen entsprechende Teile verwendet werden. Der Einsatz von ungeeigneten Ersatzteilen kann eine weitere Beschädigung hervorrufen.
17. Wenden Sie sich mit allen Fragen die Service und Reparatur betreffen an Ihren Servicepartner. Somit stellen Sie die Betriebssicherheit des Gerätes sicher.
18. Zum Netzanschluß dieses Gerätes ist eine geprüfte Leitung zu verwenden, Für einen Nennstrom bis 6A und einem Gerätegewicht größer 3kg ist eine Leitung nicht leichter als H05VV-F, 3G, 0.75mm² einzusetzen.

Trademarks

Copyright ©1999 D-Link Corporation. Contents subject to change without prior notice. D-Link is a registered trademark of D-Link Corporation/D-Link Systems, Inc. All other trademarks belong to their respective proprietors.

Copyright Statement

No part of this publication may be reproduced in any form or by any means or used to make any derivative such as translation, transformation, or adaptation without permission from D-Link Corporation/D-Link Systems Inc., as stipulated by the United States Copyright Act of 1976.

CE Mark Warning

This is a Class B product. In a domestic environment, this product may cause radio interference, in which case the user may be required to take adequate measures

Warnung!

Dies ist in Produkt der Klasse B. Im Wohnbereich kann dieses Produkt Funkstörungen verursachen. In diesem Fall kann vom Benutzer verlangt werden, angemessene Massnahmen zu ergreifen.

Advertencia de Marca de la CE

Este es un producto de Clase B. En un entorno doméstico, puede causar interferencias de radio, en cuyo caso, puede requerirse al usuario para que adopte las medidas adecuadas.

Attention!

Ceci est un produit de classe B. Dans un environnement domestique, ce produit pourrait causer des interférences radio, auquel cas l'utilisateur devrait prendre les mesures adéquates.

Attenzione!

Il presente prodotto appartiene alla classe B. Se utilizzato in ambiente domestico il prodotto può causare interferenze radio, nel cui caso è possibile che l'utente debba assumere provvedimenti adeguati.

FCC Warning

This equipment has been tested and found to comply with the limits for a Class B digital device, pursuant to part 15 of the FCC Rules. These limits are designed to provide reasonable protection against harmful interference in a residential installation. This equipment generates, uses and can radiate radio frequency energy and, if not installed and used in accordance with the instructions, may cause harmful interference to radio communications. However, there is no guarantee that interference will not occur in a particular installation. If this equipment does cause harmful interference to radio or television reception, which can be determined by turning the equipment off and on, the user is encouraged to try to correct the interference by one or more of the following measures:

- Reorient or relocate the receiving antenna.
- Increase the separation between the equipment and receiver.
- Connect the equipment into an outlet on a circuit different from that to which the receiver is connected.
- Consult the dealer or an experienced radio/ TV technician for help.

D-Link

Offices

AUSTRALIA	D-LINK AUSTRALIA 1 Giffnock Ave, North Ryde, NSW 2113, Australia TEL: 61-2-8899-1800 FAX: 61-2-8899-1868 TOLL FREE: 1800-177-100 (Australia), 0800-900900 (New Zealand) E-MAIL: support@dlink.com.au, info@dlink.com.au URL: www.dlink.com.au
BENELUX	D-LINK BENELUX Fellenoord 130, 5611 ZB Eindhoven, The Netherlands TEL: 31-40-2668713 FAX: 31-40-2668666 E-MAIL: info@dlink-benelux.nl, info@dlink-benelux.be URL: www.dlink-benelux.nl/, www.dlink-benelux.be/
CANADA	D-LINK CANADA #2180 Winston Park Drive, Oakville, Ontario, L6H 5W1 Canada TEL: 1-905-829-5033 FAX: 1-905-829-5095 FREE CALL: 1-800-354-6522 E-MAIL: techsup@dlink.ca URL: www.dlink.ca FTP: ftp.dlinknet.com
CHILE	D-LINK SOUTH AMERICA Isidora Goyechea 2934 of 702, Las Condes, Santiago – Chile S.A. TEL: 56-2-232-3185 FAX: 56-2-232-0923 E-MAIL: ccasassu@dlink.cl, tsilva@dlink.cl URL: www.dlink.cl
CHINA	D-LINK CHINA 2F., Sigma Building, 49 Zhichun Road, Haidian District, 100080 Beijing, China TEL: 86-10-85182533 FAX: 86-10-85182250
DENMARK	D-LINK DENMARK Naverland 2, DK-2600 Glostrup, Copenhagen, Denmark TEL: 45-43-969040 FAX: 45-43-424347 E-MAIL: info@dlink.dk URL: www.dlink.dk
EGYPT	D-LINK MIDDLE EAST 7 Assem Ebn Sabet Street, Heliopolis Cairo, Egypt TEL: 202-2456176 FAX: 202-2456192 E-MAIL: support@dlink-me.com URL: www.dlink-me.com
FINLAND	D-Link FINLAND Thlli-ja Pakkahuone Katajanokanlaituri 5, FIN-00160 Helsinki, Finland TEL: 358-9-622-91660 FAX: 358-9-622-91661 E-MAIL: info@dlink-fi.com URL: www.dlink-fi.com
FRANCE	D-LINK FRANCE Le Florilege #2, Allée de la Fresnerie, 78330 Fontenay le Fleury France TEL: 33-1-302-38688 FAX: 33-1-3023-8689 E-MAIL: info@dlink-france.fr URL: www.dlink-france.fr
GERMANY	D-LINK Central Europe/D-Link Deutschland GmbH Schwalbacher Strasse 74, D-65760 Eschborn, Germany TEL: 49-6196-77990 FAX: 49-6196-7799300 INFO LINE: 00800-7250-0000 (toll free) HELP LINE: 00800-7250-4000 (toll free) REPAIR LINE: 00800-7250-8000 E-MAIL: info@dlink.de URL: www.dlink.de
IBERIA	D-LINK IBERIA Gran Via de Carlos III, 84, 3º Edificio Trade, 08028 BARCELONA TEL: 34 93 4090770 FAX: 34 93 4910795 E-MAIL: info@linkiberia.es URL: www.dlinkiberia.es
INDIA	D-LINK INDIA Plot No.5, Kurla-Bandra Complex Road, Off Cst Road, Santacruz (E), Bombay - 400 098 India TEL: 91-22-652-6696 FAX: 91-22-652-8914 E-MAIL: service@dlink.india.com URL: www.dlink-india.com
ITALY	D-LINK ITALIA Via Nino Bonnet No. 6/b, 20154 Milano, Italy TEL: 39-02-2900-0676 FAX: 39-02-2900-1723 E-MAIL: info@dlink.it URL: www.dlink.it
JAPAN	D-LINK JAPAN 10F, 8-8-15 Nishi-Gotanda, Shinagawa-ku, Tokyo 141, Japan TEL: 81-3-5434-9678 FAX: 81-3-5434-9868 E-MAIL: kida@d-link.co.jp URL: www.d-link.co.jp
NORWAY	D-LINK NORWAY Waldemar Thranesgt. 77, 0175 Oslo, Norway TEL: 47-22-991890 FAX: 47-22-207039
RUSSIA	D-LINK RUSSIA Michurinski Prospekt 49, 117607 Moscow, Russia TEL: 7-095-737-3389, 7-095-737-3492 FAX: 7-095-737-3390 E-MAIL: vl@dlink.ru URL: www.dlink.ru
SINGAPORE	D-LINK INTERNATIONAL 1 International Business Park, #03-12 The Synergy, Singapore 609917 TEL: 65-774-6233 FAX: 65-774-6322 E-MAIL: info@dlink.com.sg URL: www.dlink-intl.com
S. AFRICA	D-LINK SOUTH AFRICA 102-106 Witchazel Avenue, Einetein Park 2, Block B, Highveld Technopark Centurion, South Africa TEL: 27(0)126652165 FAX: 27(0)126652186 E-MAIL: attie@d-link.co.za URL: www.d-link.co.za
SWEDEN	D-LINK SWEDEN P.O. Box 15036, S-167 15 Bromma Sweden TEL: 46-(0)8564-61900 FAX: 46-(0)8564-61901 E-MAIL: info@dlink.se URL: www.dlink.se
TAIWAN	D-LINK TAIWAN 2F, No. 119 Pao-Chung Road, Hsin-Tien, Taipei, Taiwan, TEL: 886-2-2910-2626 FAX: 886-2-2910-1515 E-MAIL: dssqa@tsc.dlinktw.com.tw URL: www.dlinktw.com.tw
U.K.	D-LINK EUROPE 4 th Floor, Merit House, Edgware Road, Colindale, London, NW9 5AB, U.K. TEL: 44-20-8731-5555 FAX: 44-20-8731-5511 E-MAIL: info@dlink.co.uk URL: www.dlink.co.uk
U.S.A.	D-LINK U.S.A. 53 Discovery Drive, Irvine, CA 92618 USA TEL: 1-949-788-0805 FAX: 1-949-753-7033 INFO LINE: 1-877-453-5465 BBS: 1-949-455-1779, 1-949-455-9616 E-MAIL: tech@dlink.com, support@dlink.com URL: www.dlink.com

Registration Card

Print, type or use block letters.

Your name: Mr./Ms _____

Organization: _____ Dept. _____

Your title at organization: _____

Telephone: _____ Fax: _____

Organization's full address: _____

Country: _____

Date of purchase (Month/Day/Year): _____

Product Model	Product Serial No.	* Product installed in type of computer (e.g., Compaq 486)	* Product installed in computer serial No.

(* Applies to adapters only)

Product was purchased from:

Reseller's name: _____

Telephone: _____ Fax: _____

Reseller's full address: _____

Answers to the following questions help us to support your product:

1. Where and how will the product primarily be used?

Home Office Travel Company Business Home Business Personal Use

2. How many employees work at installation site?

1 employee 2-9 10-49 50-99 100-499 500-999 1000 or more

3. What network protocol(s) does your organization use ?

XNS/IPX TCP/IP DECnet Others _____

4. What network operating system(s) does your organization use ?

D-Link LANsmart Novell NetWare NetWare Lite SCO Unix/Xenix PC NFS 3Com 3+Open

Banyan Vines DECnet Pathwork Windows NT Windows NTAS Windows '95

Others _____

5. What network management program does your organization use ?

D-View HP OpenView/Windows HP OpenView/Unix SunNet Manager Novell NMS

NetView 6000 Others _____

6. What network medium/media does your organization use ?

Fiber-optics Thick coax Ethernet Thin coax Ethernet 10BASE-T UTP/STP

100BASE-TX 100BASE-T4 100VGAnyLAN Others _____

7. What applications are used on your network?

Desktop publishing Spreadsheet Word processing CAD/CAM

Database management Accounting Others _____

8. What category best describes your company?

Aerospace Engineering Education Finance Hospital Legal Insurance/Real Estate Manufacturing

Retail/Chainstore/Wholesale Government Transportation/Utilities/Communication VAR

System house/company Other _____

9. Would you recommend your D-Link product to a friend?

Yes No Don't know yet

10. Your comments on this product?

PLEASE
PLACE STAMP
HERE

TO:

D-Link[®]