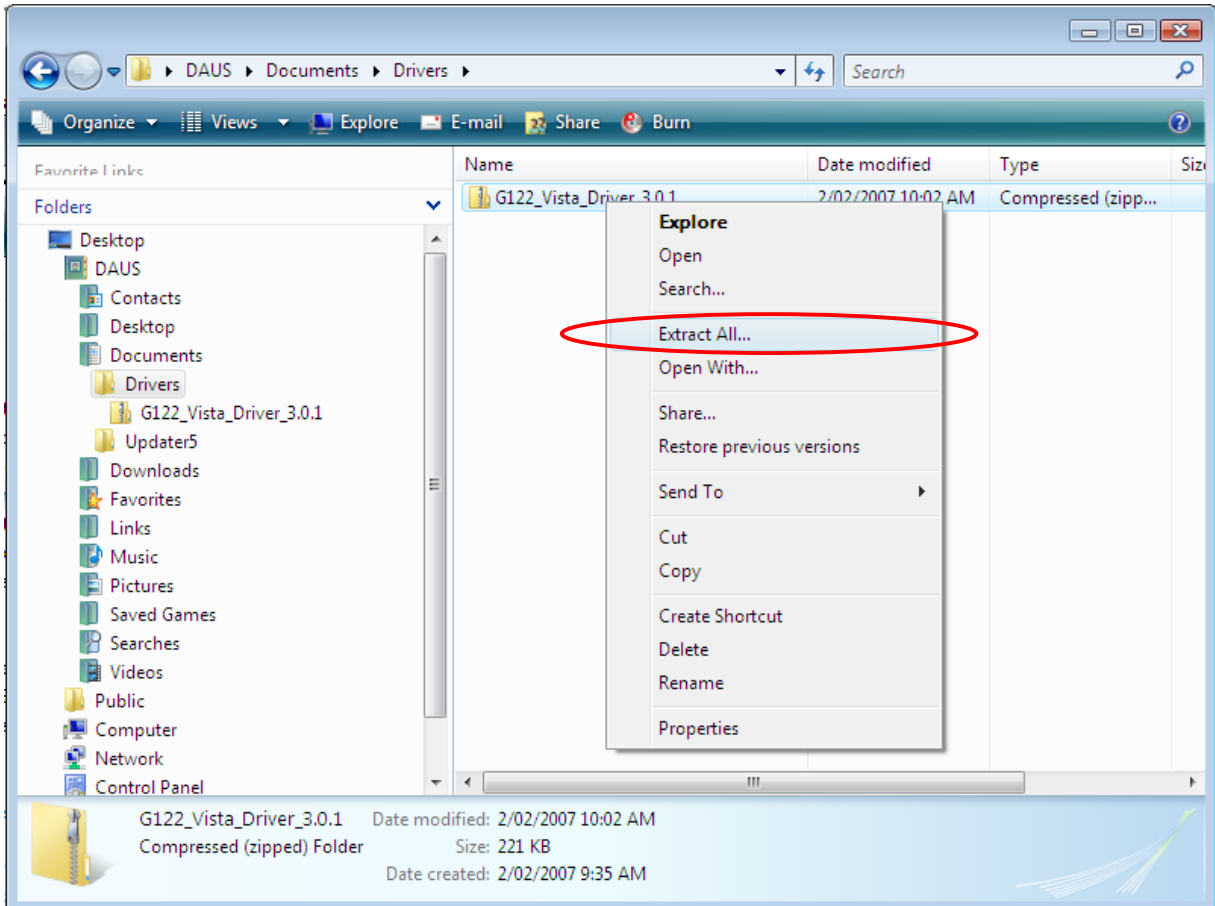


Driver Installation in Windows Vista

Step 1. Download the latest drivers for Windows Vista from our web site. Note where you save the driver files. Drivers normally come in compressed (zipped) format. Before you can use them you need to extract the files. To do that right-click on the file you have downloaded and select **Extract All...** This will create an uncompressed folder with the files ready to use.

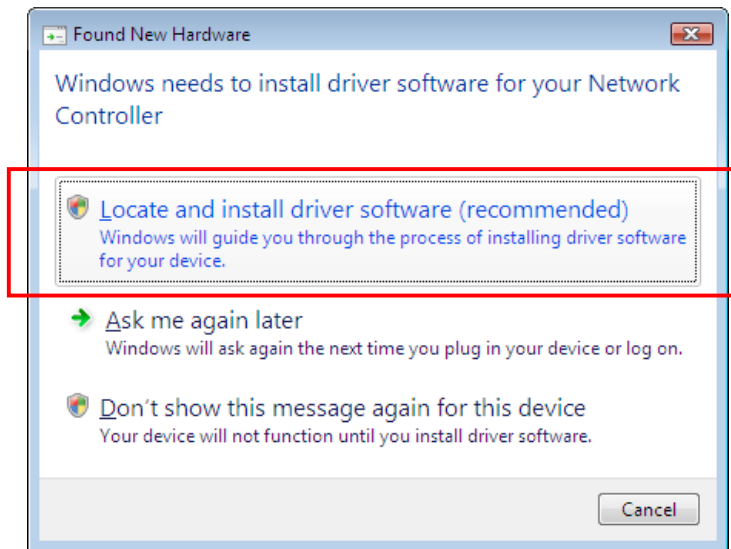
Note: in the screenshots below the names of the files/folders are just examples, they will be different in your case.



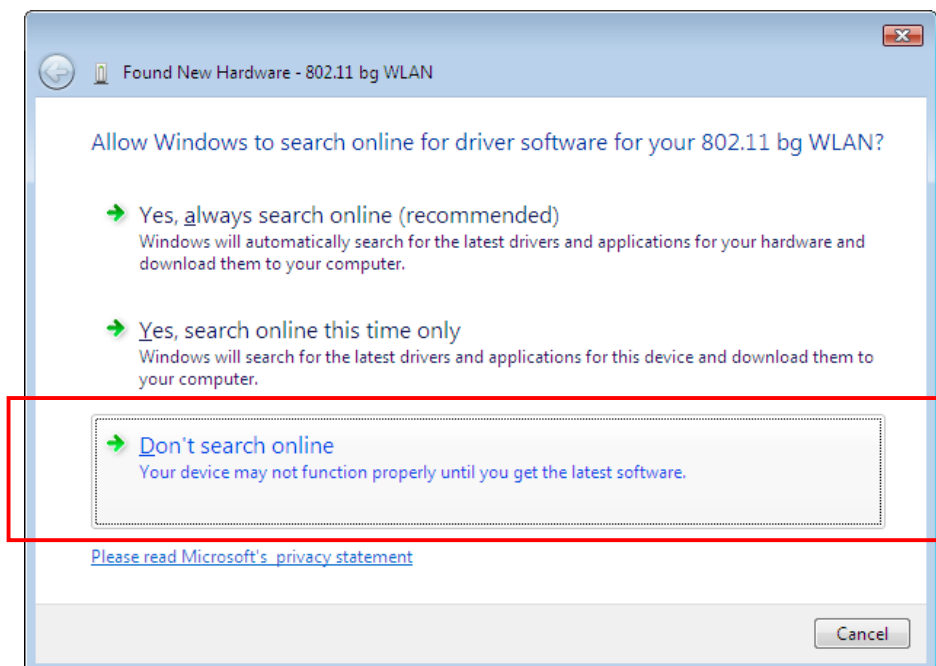
Step 2. If you have a USB or a Card Bus adapter, connect it to your computer now. If you have a PCI adapter, shut down your computer, disconnect the power cord and install the adapter and boot your computer up.

Step 3. Windows will automatically detect the new hardware. You will be prompted to install the driver. Click on the **“Locate and install driver software”** option. Then click on **Continue**.

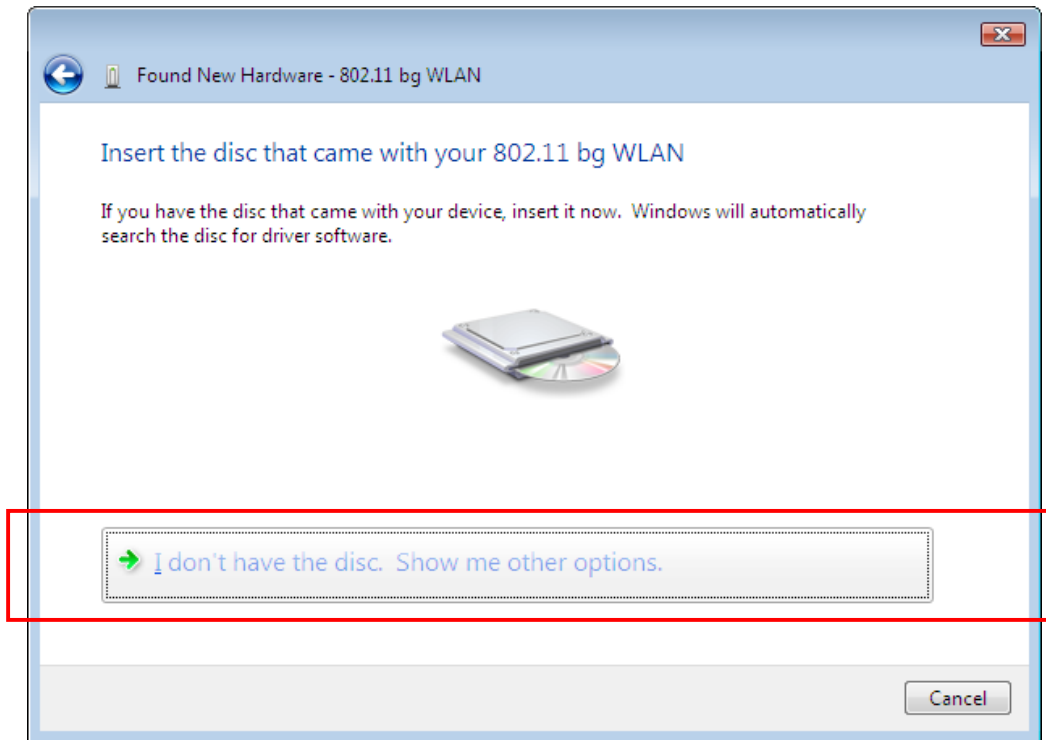
NOTE: If you have attempted to install the adapter previously please see the **“How to update driver”** steps below.



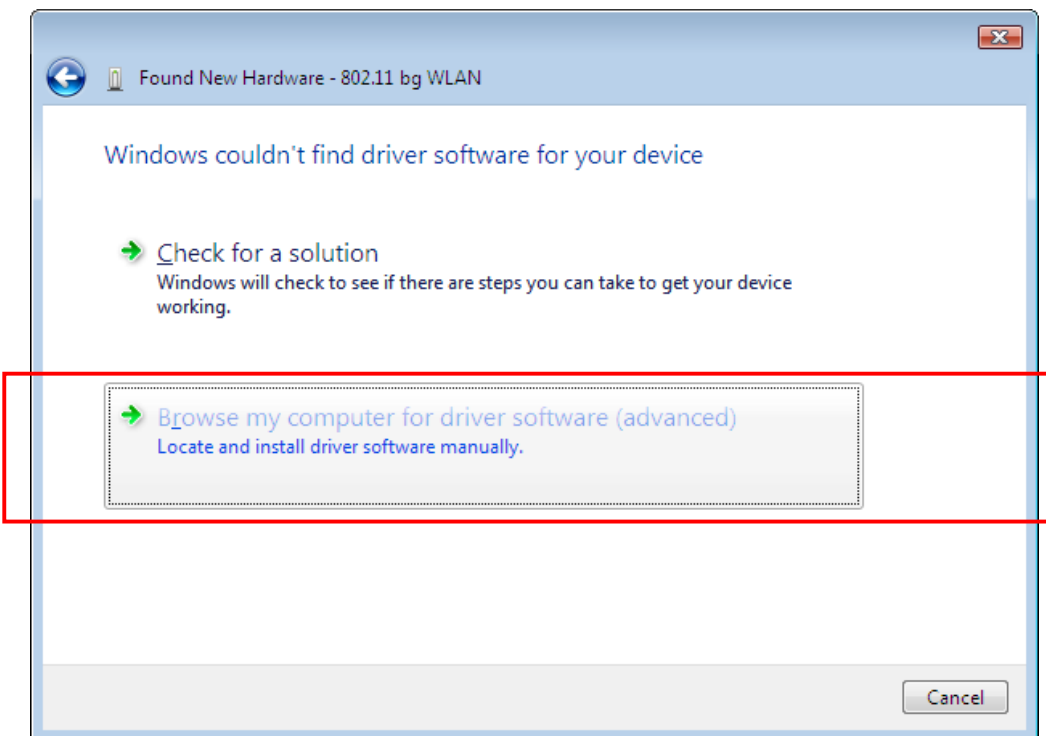
Step 4. Click on the **“Don't search online”** option.



Step 5. Click on “**I don't have the disk. Show me other options**”.

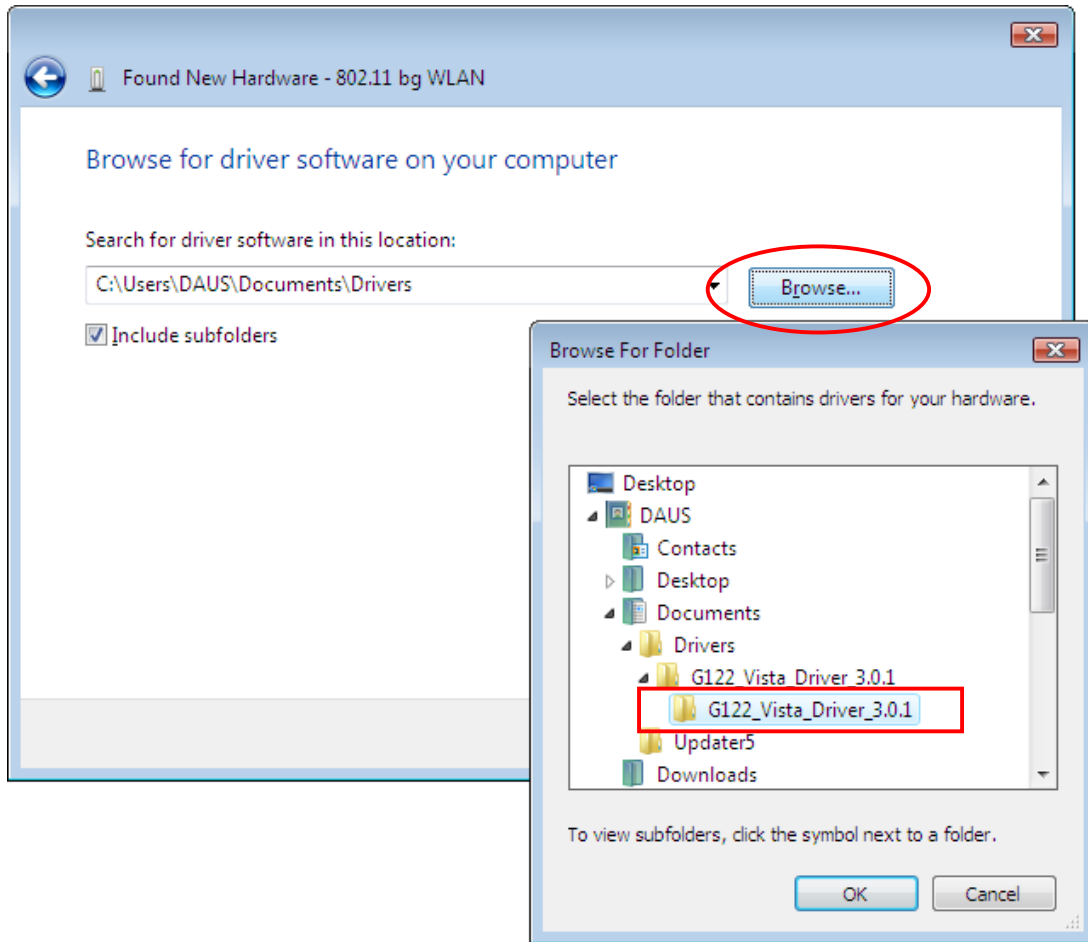


Step 6. Click on “**Browse my computer for driver software**”.

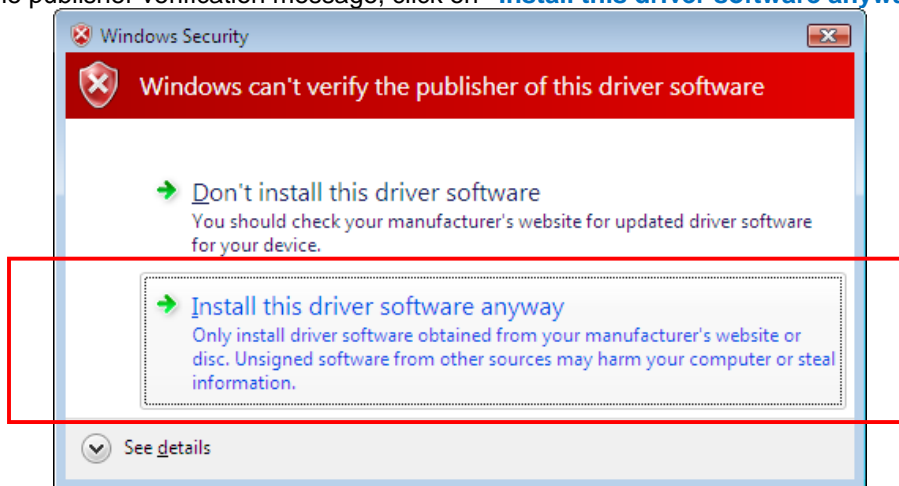


Step 7. Click on the **“Browse”** button and select the folder where you extracted the files in **Step 1**. Please make sure you are not selecting the original compressed (zipped) file. Click on **OK** and then **Next**.

Note: in the screenshots below the names of the files/folders are just examples, they will be different in your case.



Step 8. If you get the publisher verification message, click on **“Install this driver software anyway”**.



The driver installation is now completed.
See the **“How to connect to a Wireless Network”** section below.

How to update driver.

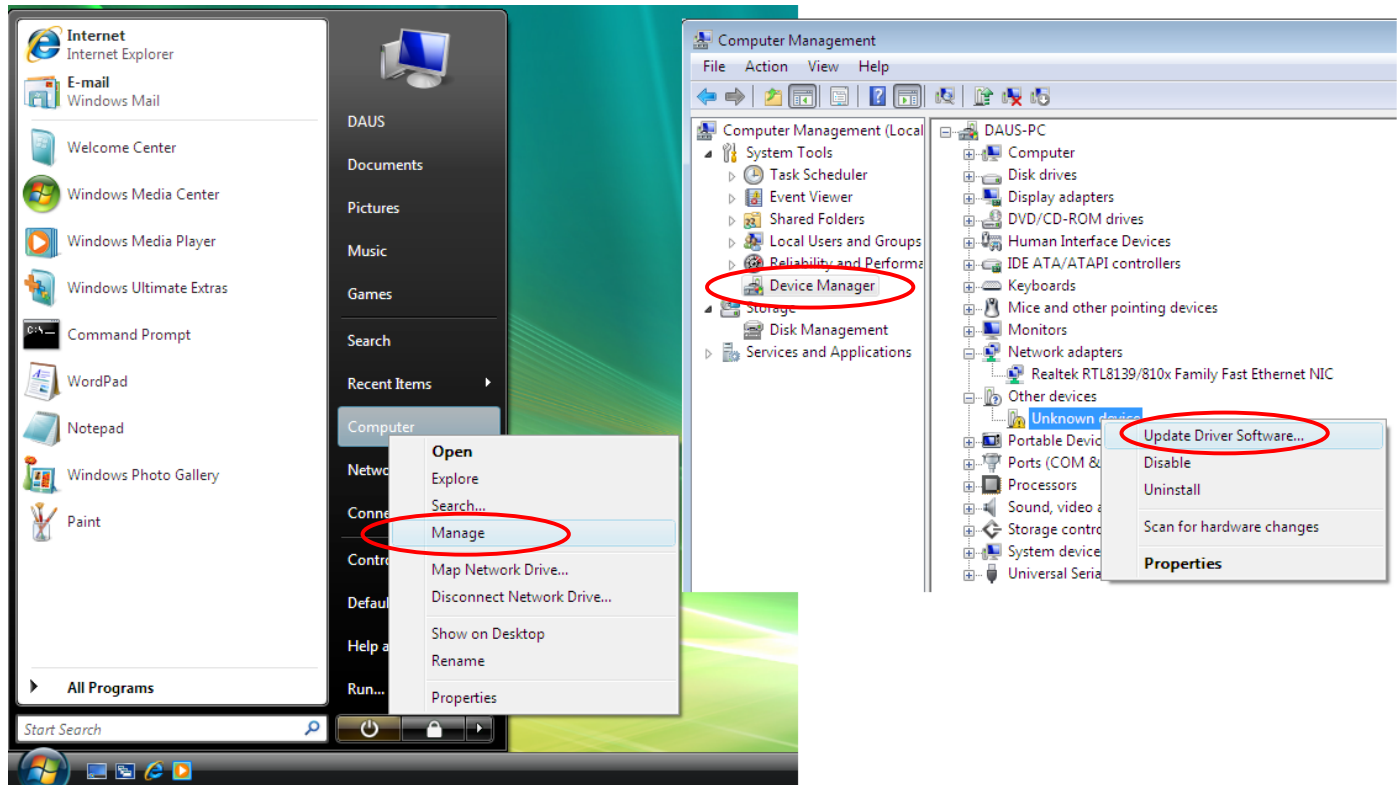
If the driver for the adapter has not been installed correctly you can re-install it by selecting the **“Update Driver”** option in *Device Manager*. Here is how to do it:

Leave the adapter connected to your computer (applies to USB adapters). Click on **Start** button, then right-click on **“Computer”** and select **Manage**.

Select **Device Manager** on the left and then look for **“Unknown Device”** in the right panel.

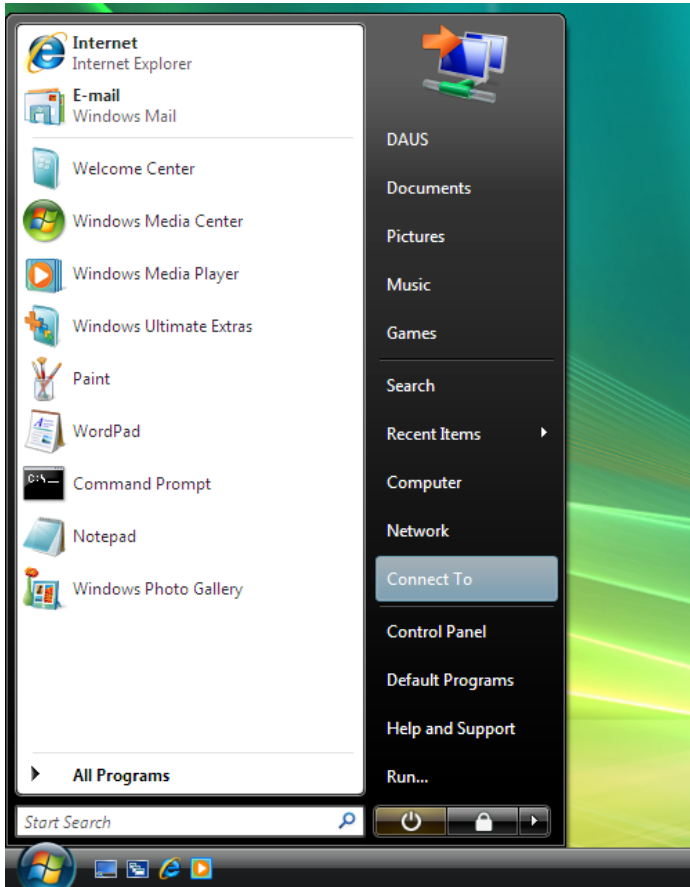
Right-click on the **“Unknown Device”** and select **Update Driver Software...**

Continue with installation using the steps above (from **Step 6** onwards).

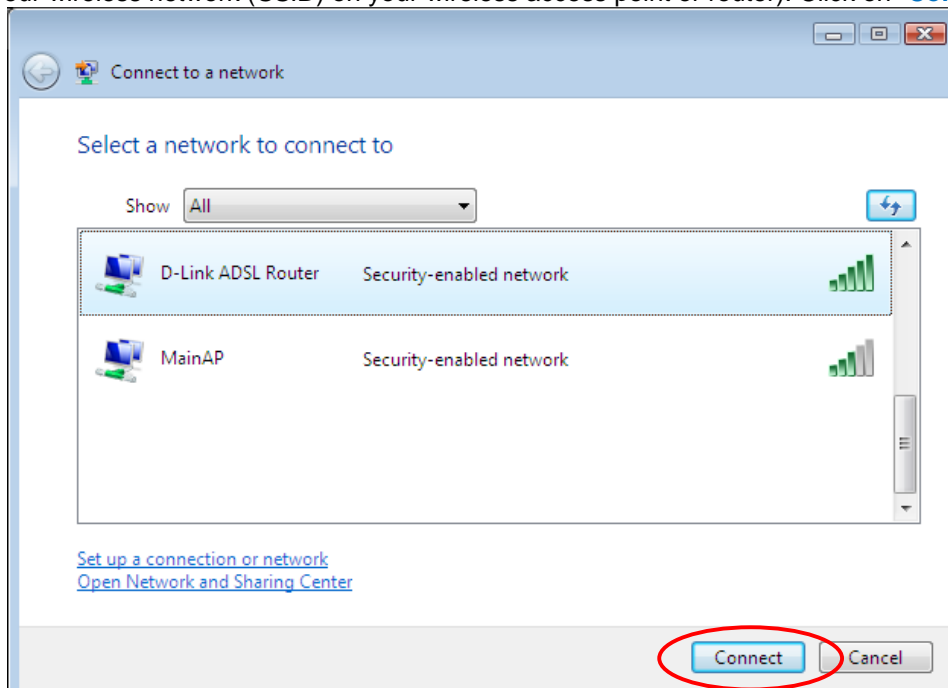


How to connect to a Wireless Network

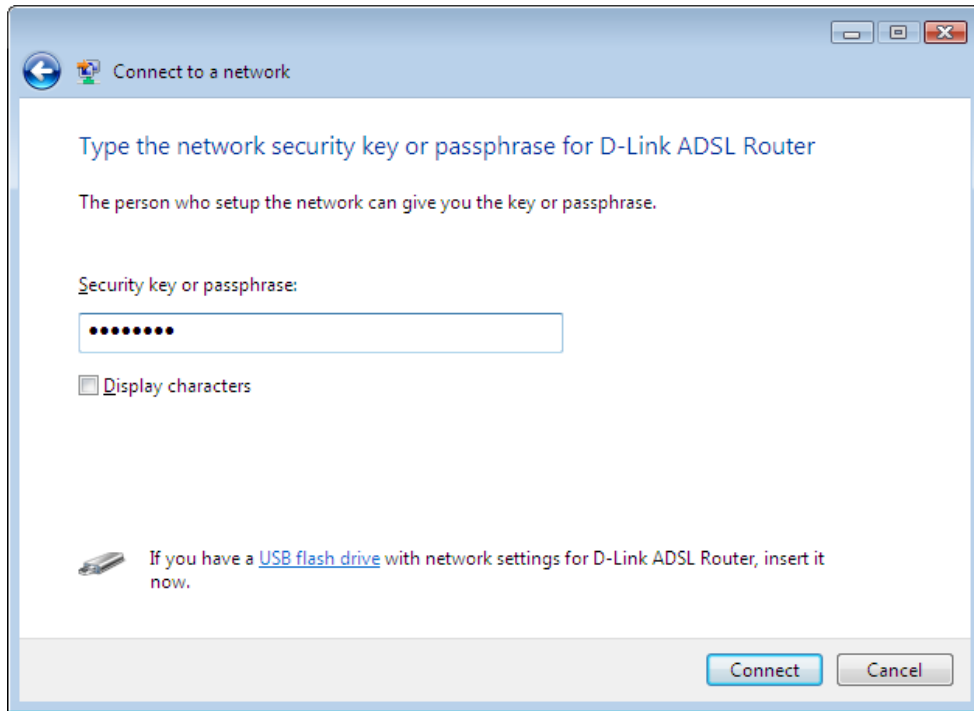
Click on the **Start** button and then on **“Connect To”**.



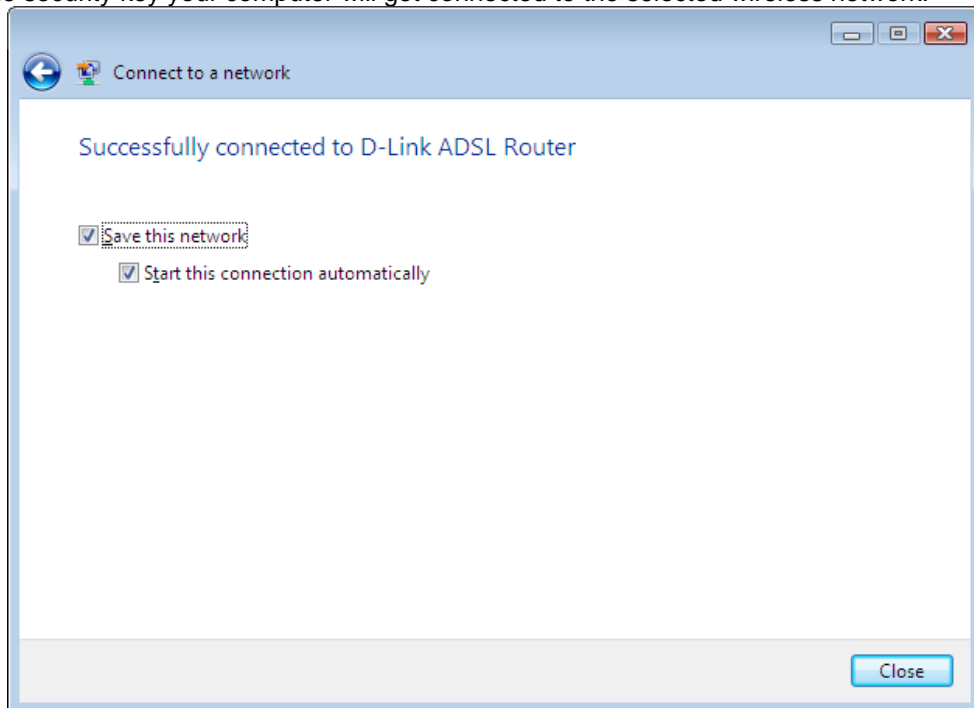
You will see a list of available wireless networks in your area. Highlight the network you want to connect to (you can set the name of your wireless network (*SSID*) on your wireless access point or router). Click on **“Connect”**



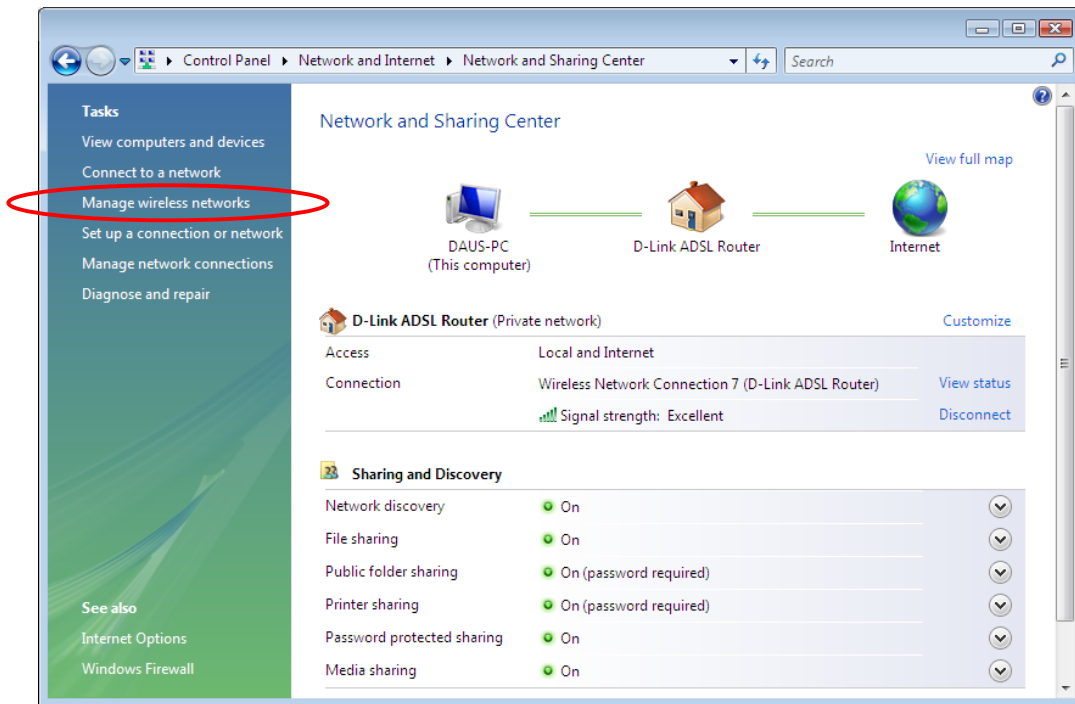
If your network is secured, you will be prompted to enter a security key or a passphrase. You will need to enter exactly the same security key or passphrase that you have set on your wireless access point or router. After typing in the key you can click on “**Display characters**” to verify that you’ve entered it correctly. Click on **Connect**.



After verifying the security key your computer will get connected to the selected wireless network.



If the wireless settings on your wireless access point or router has been changed, you will need to remove the saved network profile and then reconnect to the network with the new settings. Go to *Control Panel > Network and Internet > Network and Sharing Centre*. Click on **Manage wireless networks**.



Right-click on the network you want to remove and select **Remove network**. Then reconnect to the network using the new settings.

