

D-Link Quick Installation Guide

This product works with the following operating system software:

Windows XP, Windows 2000,

Windows Me, Windows 98SE



DWL-G122
AirPlus G™
High Speed 802.11g
USB Wireless Adapter

Before You Begin

You must have at least the following:

- You will need a computer with an available USB port to connect the DWL-G122 Wireless USB adapter.
- At least a 300 MHz processor and 32 MB of memory
- An 802.11b or 802.11g Access Point (for Infrastructure Mode) or another 802.11b or 802.11g wireless adapter (for Ad-Hoc; Peer-to-Peer networking mode.)
- Properly installed and working USB Controller.

Check Your Package Contents

These are the items included with your DWL-G122 purchase:



DWL-G122 Wireless USB Adapter



CD-ROM (containing Drivers, Manual and Warranty)



Cradle

If any of the above items are missing, please contact your reseller.

©2004 D-Link Systems, Inc. All rights reserved. Trademarks or registered trademarks are the property of their respective holders. Software and specifications subject to change without notice.

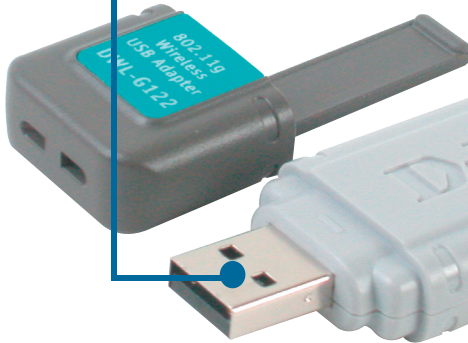
DWL-G122 Overview

USB Connector

Connects to Yours desktop or laptop computerl.

Link/Activity LED

Link - Indicates that the DWL-G122 is properly installed in the computer.
Activity - blinks when data is being transmitted through the wireless connection.



Antenna

Used to wirelessly connect to 802.11b or 802.11g networks.

1 Insert the D-Link CD-ROM Into Your Computer

Turn on the computer and **Insert** the **D-Link AirPuls G™ DWL-G122 Driver CD** in the CD-ROM drive.

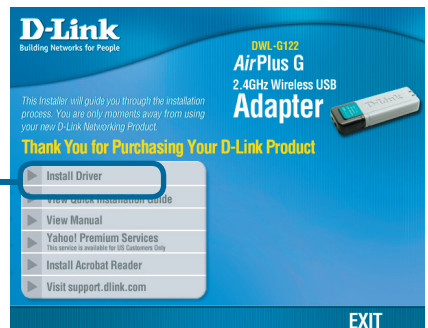
The step-by-step instructions that follow are shown in **Windows XP**. The steps and screens are similar for the other Windows operating systems




Do **NOT** install the DWL-G122 USB Adapter into your computer before installing the driver software on the D-Link CD!

The Install Screen will appear.

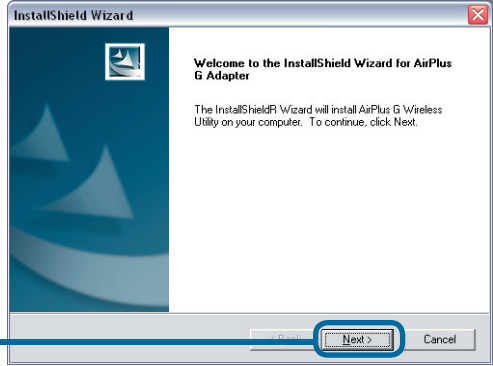
Click **Install Drivers**



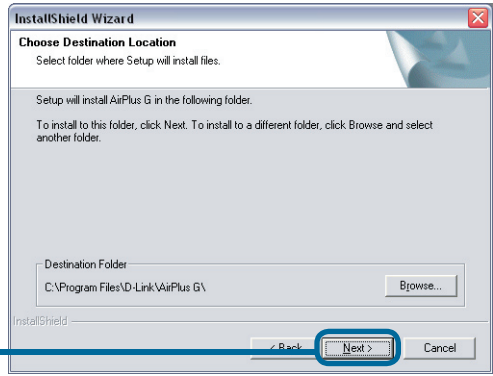
If the CD Autorun function does not automatically start on your computer, type “D:\Driver\Setup.exe” If it does start, proceed to the next screen.

 The letter “D” represents the letter of the CD-ROM drive. Your CD-ROM drive may be a different drive letter.

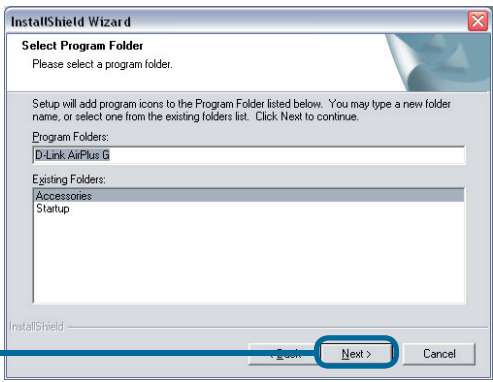
Click Next



Click Next

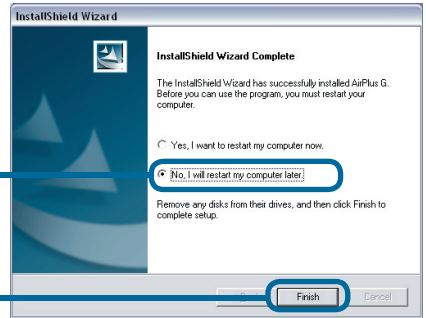


Click Next





Click Continue Anyway



Click No, I will restart my computer later

Click Finish

Shut down your computer

2

Installing the DWL-G122 Wireless USB Adapter to Your Laptop Computer

A. Make sure to turn off your computer.



B. Insert one end of the USB Adapter into the provided USB cable and plug the other end into your computer's USB Port.

3

Restart Your Computer

When you restart your computer this **Found New Hardware Wizard (Windows XP)** screen will appear:

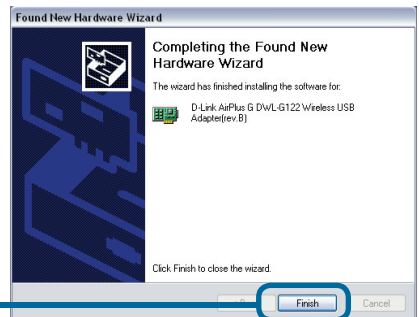
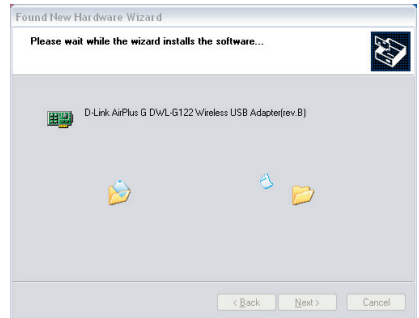
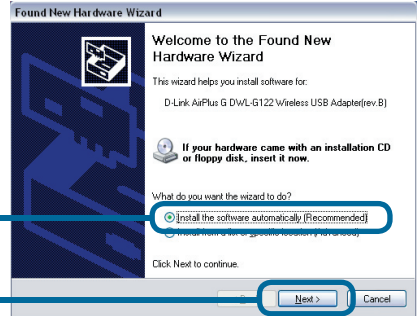
Select **Install the software automatically (Recommended)**

Click **Next**

Windows XP will automatically load the driver files.

Click **Continue Anyway**

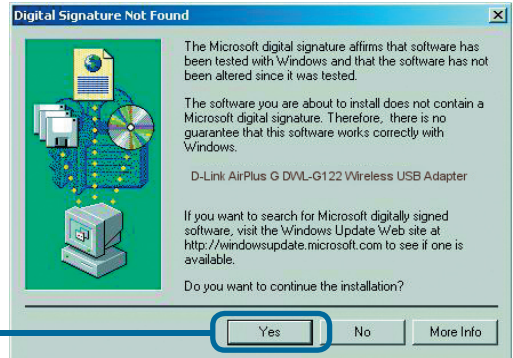
Click **Finish**





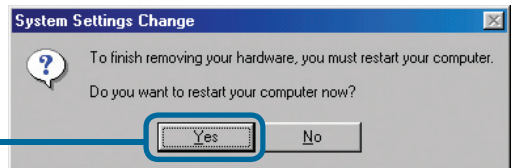
For Windows 2000, this Digital Signature Not Found screen may appear during the installation.

Click **Yes** to continue the installation



For Windows Me and 98, this screen may appear.

Click **Yes** to finalize the installation



4

Your Installation is Complete!

After you've continued in Windows XP (or after the computer restarts in the other Windows operating systems), the D-Link AirPlus G™ DWL-G122 **Configuration Utility** will automatically start and the utility icon will appear in the bottom right hand corner of the desktop screen (systray). **If this icon appears GREEN, then you have successfully installed the DWL-G122, are connected to a wireless network and are ready to communicate!**

Double-click the **utility icon** to use the configuration utility.



Appendix

Using the Configuration Utility

A. Status: Displays the MAC Address of the Access Point that is associated with the DWL-G122.

B. SSID: The Service Set Identifier is the name assigned to the wireless network. The factory SSID setting is set to **default**.

C. Frequency: Displays the current frequency used by the adapter.

D. Wireless Mode: The factory setting is set to Infrastructure. Ad-Hoc mode is used for peer-to-peer networking.

E. Encryption: Displays the current encryption status of the wireless connection.

D-Link AirPlus G Wireless Utility

- Link Info** (A)
- Configuration** (B)
- Advanced** (C)
- Site Survey** (D)
- About** (E)

Status: Associated BSSID=00:05:5D:A1:D1:FF

SSID: default

Frequency: 802.11g

Wireless Mode: Infrastructure

Encryption: Disabled

Connection Info: Connected

Tx Rate: 54.0 Mbps

Channel: 6

Signal Quality

Signal Strength: 97%

Packet Count

Transmit: >500, 250, 0

Receive: [Bar Graph]

F. Connection Info: Displays connected or authenticated information.

G. TxRate: The default setting is Auto ; meaning, TxRate settings are automatically determined by the DWL-G122 depending on the distance from the access point.

H. Channel: Displays the channel information. By default, the channel is set to 6. Please note that the DWL-G122 will automatically adjust the channel depending on the Access Point.

I. Signal Strength / Link Quality: Represents the wireless signal quality and strength between the access point and the DWL-G122. The percentage coincides with the graphical bar.

J. Packet Count: Graphically displays the statistics of data transmitted and received.

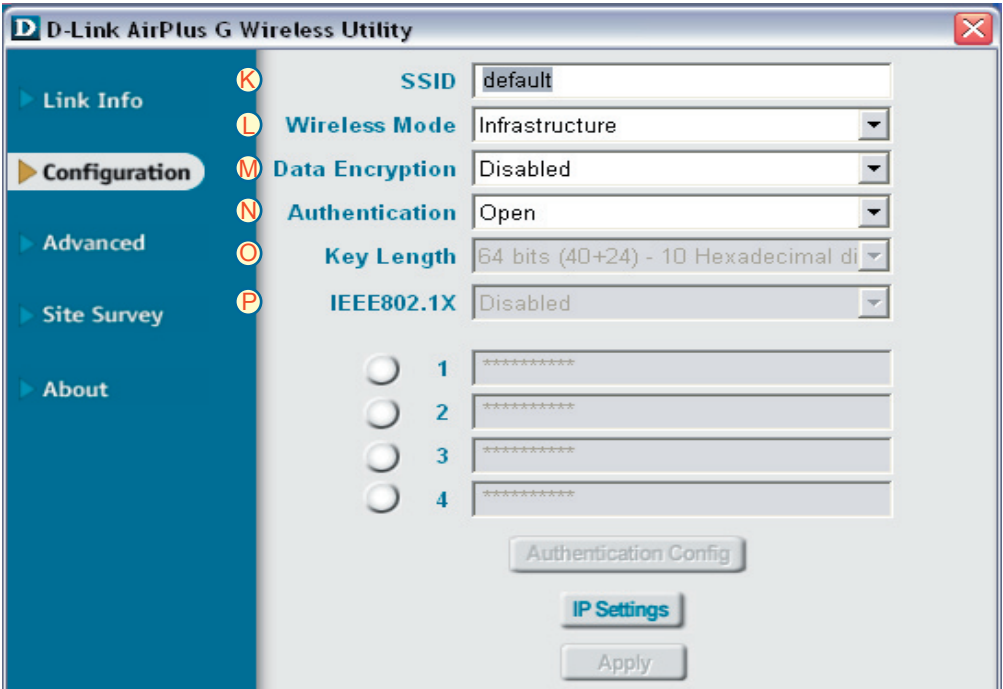
Appendix

Using the Configuration Utility (cont.)

K. SSID: The Service Set Identifier is the name assigned to the wireless network. The factory SSID setting is set to default. Make changes here to match the SSID on existing Wireless Router or Access Point.

L. Wireless Mode: The factory setting is set to Infrastructure. Ad-Hoc mode is used for peer-to-peer networking.

M. Data Encryption: The default setting is set to Disabled. The adapter supports WEP when encryption is enabled.



N. Authentication: You can specify the authentication mode for the wireless network. The default setting is set to Open Authentication.

O. Key Length: When encryption is enabled, you will have the option to specify the level and key format of the encryption used. Select the appropriate Key Index : 1-4 and enter ACSII or hexadecimal digits in the appropriate field.

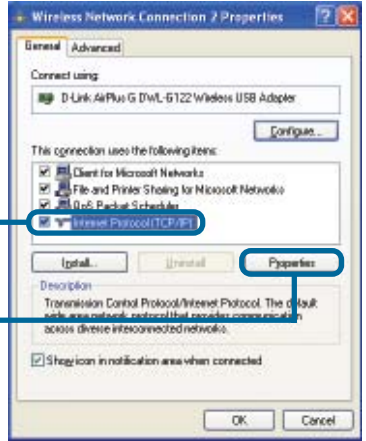
P. IEEE 802.1x: When encryption is enabled, you will have the option to specify the level and key format of the encryption used. Select the appropriate Key Index : 1-4 and enter ACSII or hexadecimal digits in the appropriate field.

IP Address Configuration

To connect to a network, make sure the proper network settings are configured for the DWL-G122.

For Microsoft Windows XP:

Go to **Start > right click on My Network Places > select Properties > Double-click on the Network Connection** associated with the DWL-G122.



Click **Internet Protocol (TCP/IP)**

Click **Properties**

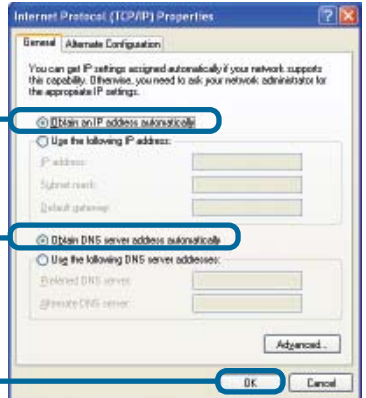
Dynamic IP address setup

Used when a **DHCP server** is available on the local network. (i.e. Router)

Select **Obtain an IP address automatically** (if the Wireless Router or Access Point has DHCP server enabled)

Select **Obtain DNS server address automatically**

Click **OK**



Static IP address setup

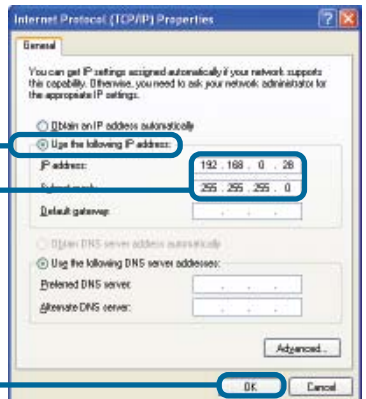
Used when a **DHCP server** is not available on the local network.

Select **Use the following IP address**

IP address: **192.168.0.28**
Subnet mask: **255.255.255.0**

Input a static IP address in the same range as the Wireless Router or Access Point.

Click **OK**



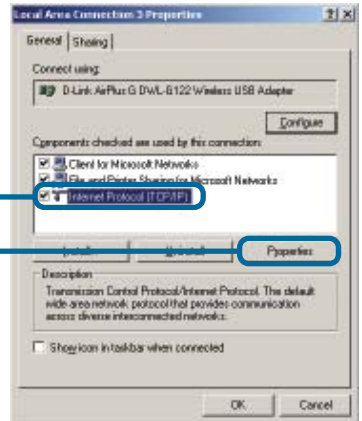
IP Address Configuration

For Windows 2000 users:

Go to **Start > Settings > Network and Dial-up Connections** > Double-click on the **Local Area Connection** associated with the DWL-G122 > select **Properties**

Click **Internet Protocol (TCP/IP)**

Click **Properties**



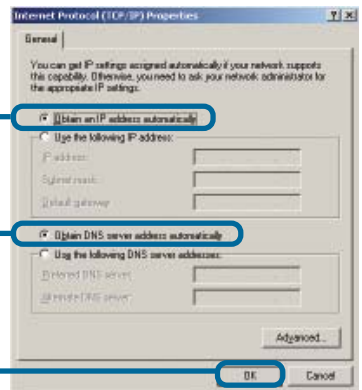
Dynamic IP address setup

Used when a **DHCP server** is available on the local network. (i.e. Router)

Select **Obtain an IP address automatically** (if the Wireless Router or Access Point has DHCP server enabled)

Select **Obtain DNS server address automatically**

Click **OK**



Static IP address setup

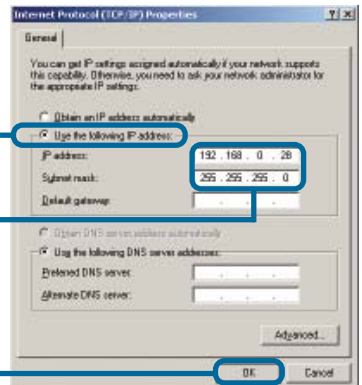
Used when a **DHCP server** is not available on the local network.

Select **Use the following IP address**

IP address: **192.168.0.28**
Subnet mask: **255.255.255.0**

Input a static IP address in the same range as the Wireless Router or Access Point.

Click **OK**



MEMO

Technical Support

You can find software updates and user documentation on the D-Link website.

D-Link provides free technical support for customers within the United States and within Canada for the duration of the warranty period on this product.

U.S. and Canadian customers can contact D-Link technical support through our website, or by phone.

Tech Support for customers within the United States:

D-Link Technical Support over the Telephone:

(877) 453-5465

24 hours a day, seven days a week

D-Link Technical Support over the Internet:

<http://support.dlink.com>

email:support@dlink.com

Tech Support for customers within Canada:

D-Link Technical Support over the Telephone:

(800) 361-5265

Monday to Friday 8:30am to 9:00pm EST

D-Link Technical Support over the Internet:

<http://support.dlink.ca>

email:support@dlink.ca

Tech Support for customers within the United Kingdom & Ireland:

D-Link UK & Ireland Technical Support over the Telephone:

+44 (0)20 7365 8440 (United Kingdom)

+353 (0)12 421 061 (Ireland)

Monday to Friday 8:00 am to 10:00 pm

D-Link Technical Support over the Internet:

<http://www.dlink.co.uk>

D-Link®
Building Networks for People