



Install Guide

Version 1.0

DWL-G680

High-Powered Wireless 108G Notebook Adapter

System Requirements

Minimum System Requirements:

- A laptop computer with an available 32-bit Cardbus slot
- At least a 500MHz processor and 64MB of memory
- An 802.11g or 802.11b Access Point (for Infrastructure Mode) or another 802.11g or 802.11b wireless adapter (for Ad-Hoc; Peer-to-Peer networking mode.)

Package Contents



D-Link DWL-G680
High-Powered Wireless
108G Notebook Adapter



**Manual and Utility
on CD**

Hardware Overview

32-bit connector

This is the connector that fits into the CardBus slot of your computer.

Antenna

Used to wirelessly connect to WiFi networks.

**Link/Activity LEDs**

Indicates that the DWL-G680 is properly installed when the computer is on and blinks when data is being transmitted.

Installing the Drivers

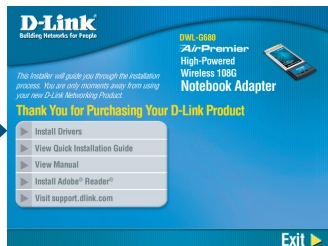
Do **NOT** install the DWL-G680 Wireless Notebook Adapter into your computer before installing the driver software from the D-Link CD!



The step-by-step instructions that follow are shown in Windows XP. The steps and screens are similar for the other Windows operating systems.

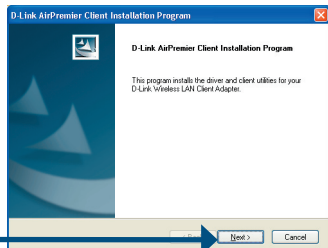
Turn on the computer and insert the D-Link DWL-G680 Driver CD in the CD-ROM drive. The installation Wizard will automatically appear.

Click **Install Drivers**



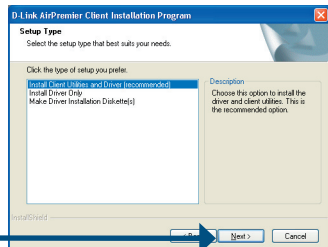
If the Installation Wizard does not automatically start on your computer, type “D:\Drivers\setup.exe.” If the Wizard does start, proceed to the next screen.

Click **Next**



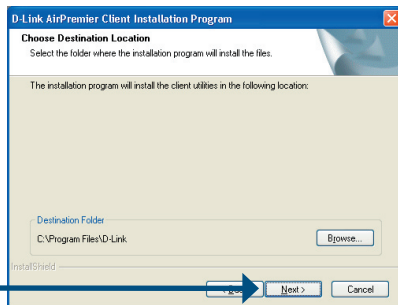
If prompted to ‘Restart system after completion of operation’, click Yes to continue.

Click **Next**

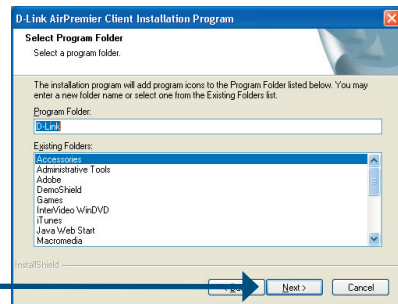


Installing the Drivers (continued)

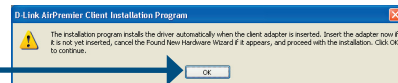
Click **Next**



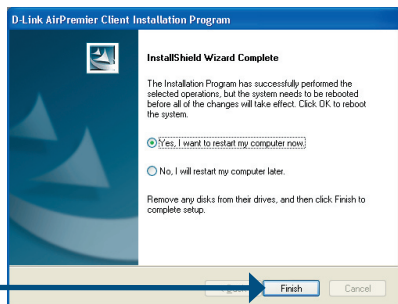
Click **Next**



Insert the DWL-G680 into your laptop and Click **OK**



Click **Finish**

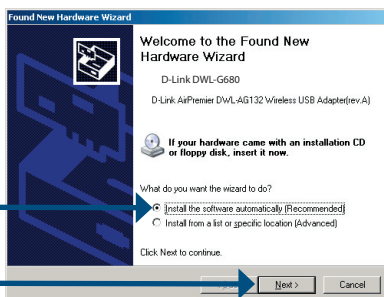


Restart your Computer

When you restart your computer this Found New Hardware Wizard (Windows XP) screen will appear.

Select **Install the software automatically** (Recommended).

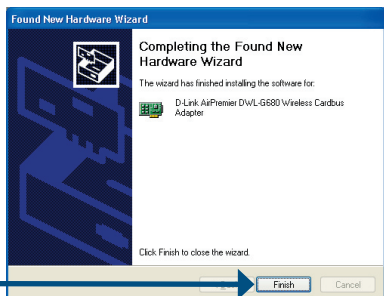
Click **Next**



Click **Continue Anyway**.



Click **Finish** to complete the installation.



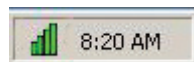
Your Installation is Complete!

After completing the Found New Hardware Wizard, the **Configuration Utility** will automatically start and the utility icon will appear in the bottom right hand corner of the desktop screen (system tray). If this icon appears GREEN, then you have successfully installed the DWL-G680, are connected to a wireless network, and are ready to communicate!

If the utility icon does not appear, double-click the **shortcut icon** that has appeared on your desktop.



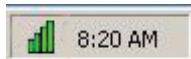
Double-click the **utility icon** to use the configuration utility.



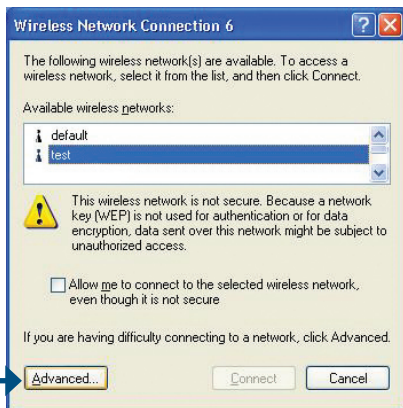
Using the Utility in Windows XP

For Windows XP, if you wish to use the *AirPremier* utility, please do the following:

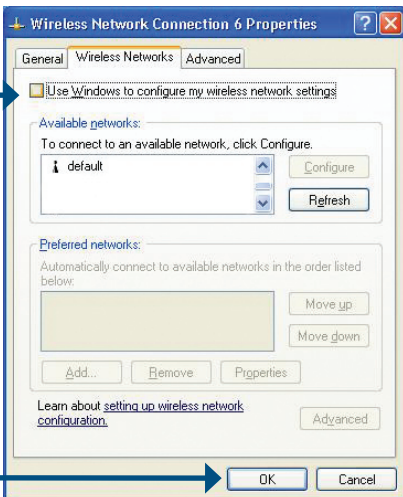
Click the **XP networking icon** to use the **Zero Configuration Wireless Settings**.



Click **Advanced**.



Uncheck **Use Windows to configure my wireless network settings**.

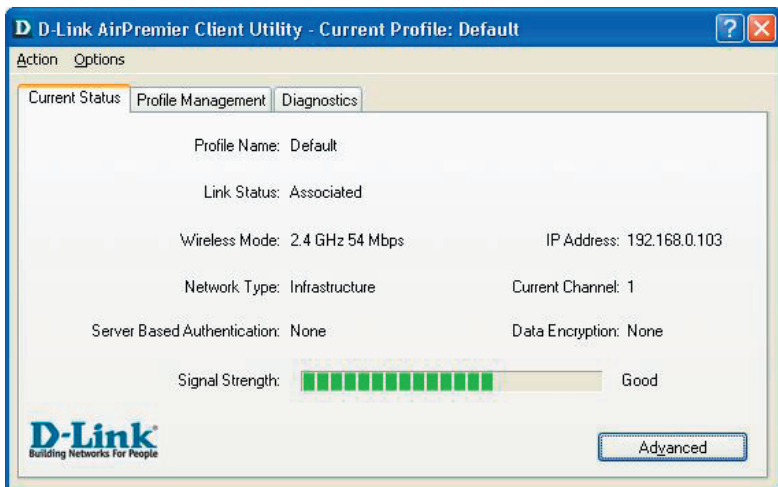
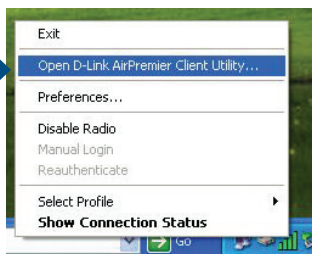


Click **OK**.

Connect to Wireless Network

To connect to a wireless network, launch the D-Link Client Utility and click on **Profile Management**.

Right-click the utility icon and select Open D-Link AirPremier Client Utility.



Profile Name: Displays the current profile being used.

Link Status: Displays the adapter's connection to the network.

Wireless Mode: Displays the wireless mode.

IP Address: Displays the IP address of the DWL-G680.

Network Type: The factory setting is set to Infrastructure. Ad-Hoc mode is used for peer-to-peer networking.

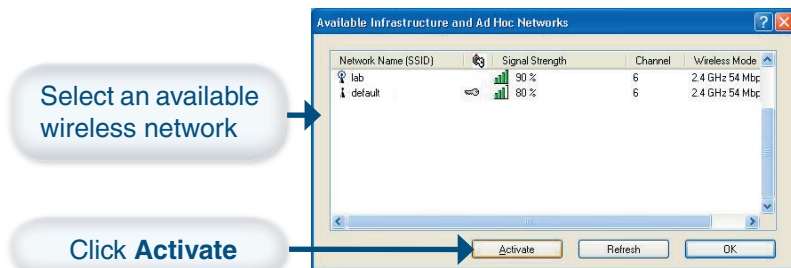
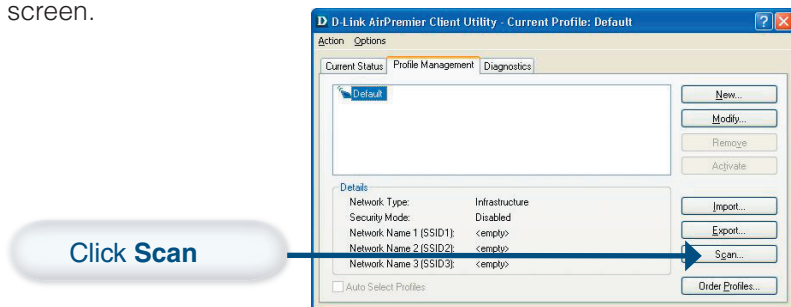
Current Channel: Displays the channel information. By default, the channel is set to 6 and selection is automatically determined by the DWL-G680.

Server based Authentication: Displays if using 802.1x.

Data Encryption: Displays the current encryption level.

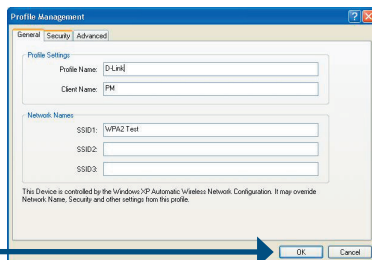
Signal Strength: Represents the wireless signal between the access point and the DWL-G680. The percentage coincides with the graphical bar.

After clicking **Profile Management**, you will see the following screen.



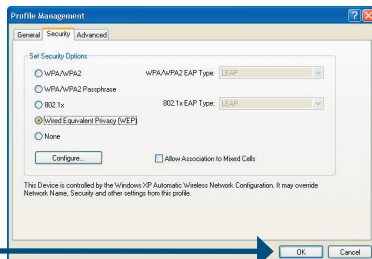
Enter a unique name for the new wireless connection

Click **OK**



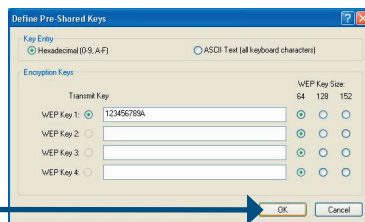
Select a security option (in this example we will use WEP)

Click **OK**

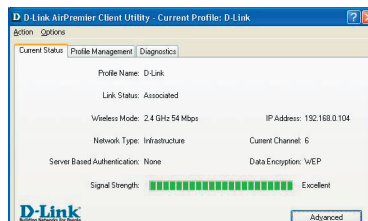


Enter the WEP transmit key

Click **OK**



Congratulations, you've created a Wireless Network Connection.



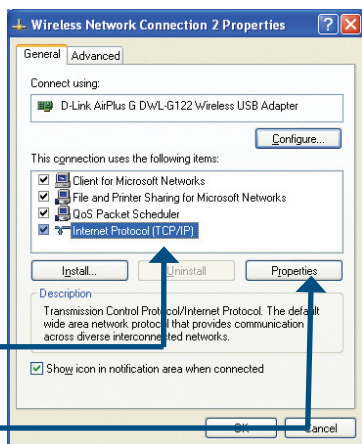
IP Address Configuration

To connect to a network, make sure the proper network settings are configured for the DWL-G680.

For **MICROSOFT WINDOWS XP**: Go to Start > right-click on My Network Places > select Properties > double-click on the network connection associated with the DWL-G680.

Click **Internet Protocol (TCP/IP)**

Click **Properties**



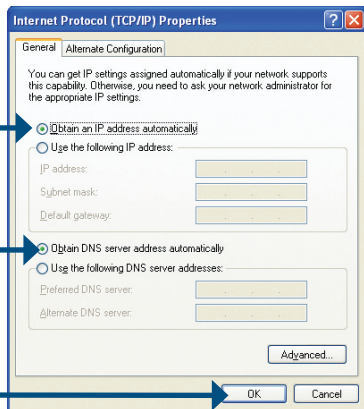
Dynamic IP address setup

Used when a DHCP server is available on the local network. (e.g., a Router).

Select **Obtain an IP address automatically** (if the wireless router or access point has DHCP server enabled).

Select **Obtain DNS server address automatically**.

Click **OK**



IP Address Configuration (continued)

Static IP address setup

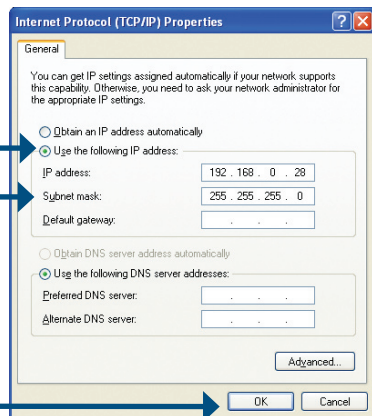
Used when a DHCP server is not available on the local network.

Select **Use the following IP address**

IP address: 192.168.0.28
Subnet Mask: 255.255.255.0

Input a static IP address in the same range as the wireless router or access point.

Click **OK**

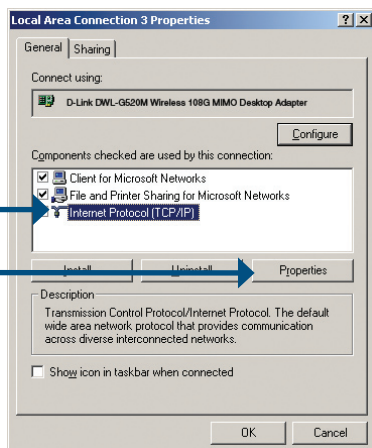


For WINDOWS 2000:

Go to Start > Settings > Network and Dial-Up connections > double-click on the Local Area Connection associated with the DWL-G680 > select Properties.

Click **Internet Protocol (TCP/IP)**.

Click **Properties**.



IP Address Configuration (continued)

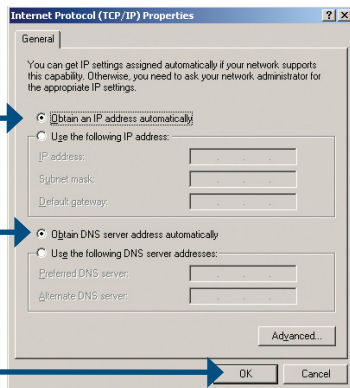
Dynamic IP address setup

Used when a DHCP server is available on the local network. (e.g., a Router).

Select **Obtain an IP address automatically** (if the wireless router or access point has DHCP server enabled).

Select **Obtain DNS server address automatically**.

Click **OK**



Static IP address setup

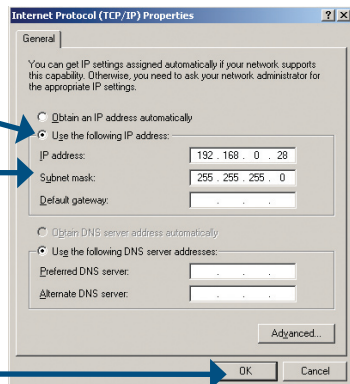
Used when a DHCP server is not available on the local network.

Select **Use the following IP address**

IP address: 192.168.0.28
Subnet Mask: 255.255.255.0

Input a static IP address in the same range as the wireless router or access point.

Click **OK**



Notes

Technical Support

D-Link's website contains the latest user documentation and software updates for D-Link products.

D-Link provides free technical support for customers within the United States and Canada for the duration of the product's warranty period.

U.S. and Canadian customers can contact D-Link Technical Support through our website or by phone.

United States

Telephone

(877) 453-5465

Monday through Friday 8:00am to 5:00pm (PST)

World Wide Web

<http://support.dlink.com>.

E-mail

support@dlink.com

Canada

Telephone

(800) 361-5265

Monday through Friday, 7:30am to 12:00am EST.

World Wide Web

<http://support.dlink.ca>

E-mail

support@dlink.ca



Copyright© 2005 D-Link Corporation/D-Link Systems, Inc. All rights reserved.

D-Link and the D-Link logo are trademarks or registered trademarks of D-Link Corporation or its subsidiaries in the United States and other countries.

©2005 D-Link Corporation/D-Link Systems, Inc. All rights reserved. D-Link, the D-Link logo are registered trademarks of D-Link Corporation or its subsidiaries in the United States and other countries. Other trademarks are the property of their respective owners. All references to speed are for comparison purposes only. Product specifications, size and shape are subject to change without notice, and actual product appearance may differ from that depicted herein. Visit www.dlink.com for more details.