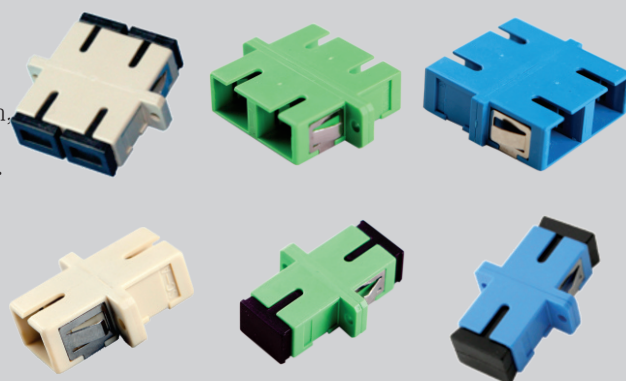


D-Link offers a full range of SC adapters that have compact design & high precision, which perform well under various circumstances & maintain no plug & unplug strength. Simple and duplex adapters are available. The sleeves are basically recommended zirconia type, phosphor bronze split.



FEATURES

- Compact design
- Telcordia/IEC compliance
- High precision alignment
- Low insertion and return loss

APPLICATIONS

- Telecommunication networks
- LAN
- Data communications
- Optical equipments

SPECIFICATIONS

Insertion Loss	$\leq 0.20\text{dB}$ for Zirconia Sleeve
Sleeve/Ferrule Withdrawal Force	$2.0\text{N} \sim 5.9\text{N}$

ORDERING INFORMATION:

Single mode		Multi mode	
Product Code	Description	Product Code	Description
NAD-FSSCSC	ADAPTOR SC SM	NAD-FMSSCSC	ADAPTOR SC MM
NAD-FSDSCSC	ADAPTOR SC SM DUPLEX	NAD-FMDSCSC	ADAPTOR SC MM DUPLEX