



Firmware Version: 1.10rc041

Published Date: 2012/08/28

Content:

Upgrading Instructions:.....	2
Upgrading by using Web-UI.....	2
New Features:.....	2
Changes of MIB & D-View Module:.....	3
Problems Fixed:	3
Known Issues:	3
Related Documentation:	3

Revision History and System Requirement:

Firmware Version	Date	Model	Hardware Version
1.00rc016	2010/12/06	DAP-2360	A1

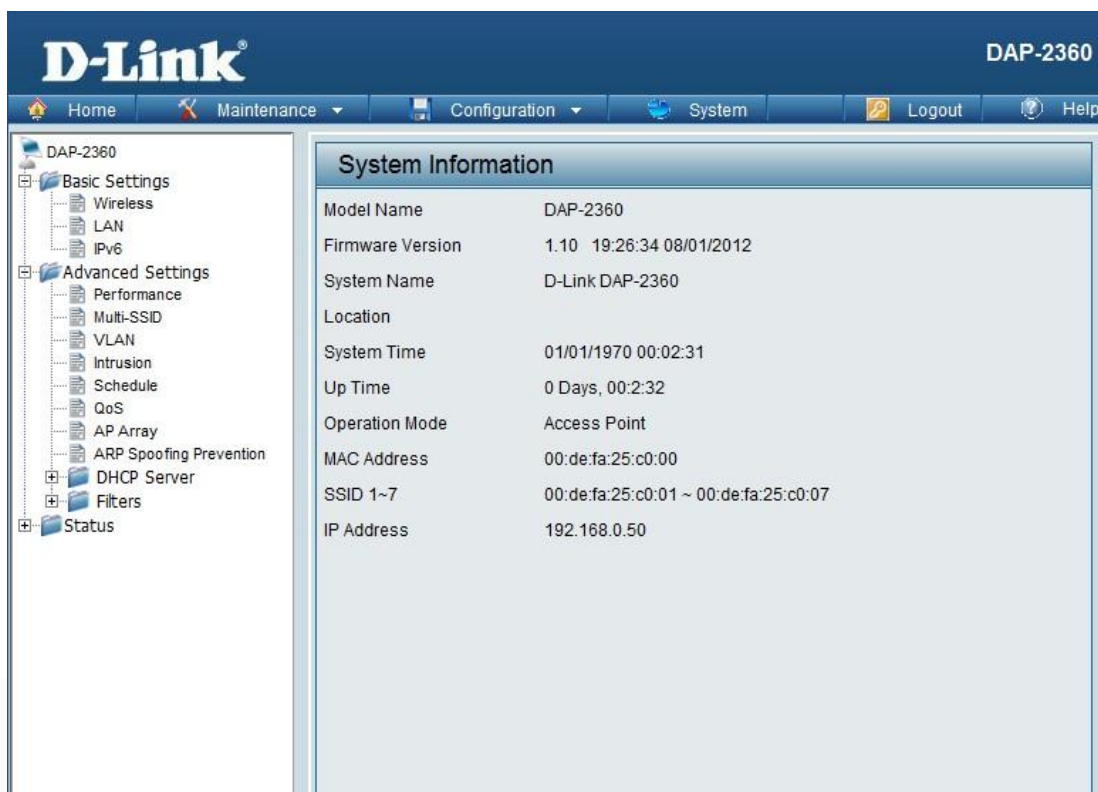
Upgrading Instructions:

D-Link AP supports firmware upgrading via Web-UI. You may download the firmware from D-Link web site <http://tsd.dlink.com.tw>.

Upgrading by using Web-UI

1. Connect a work station to the LAN port of Access Point.
2. Open the web browser of work station and entering the IP address of the AP. The system default IP address is 192.168.0.50.
3. Enter administrator's username and password, user name is "admin" and leave the password field blank by default.

To update the AP's firmware, click **Maintenance > Firmware and SSL Certification**



New Features:

1. Update new Wireless driver.
2. Support IPv6
3. Support DNS client for SNTP.
4. Add Config file and F/W transfer status in MIB module.
5. Add HT20/40 coexistent mechanism "Enable/Disable" in the Web UI.

Changes of MIB & D-View Module:

None

Problems Fixed:

Firmware Version	Problems Fixed
V1.10	<ol style="list-style-type: none"> 1. Adjust TX power base on D-Link WiFi Frequency table 2. Fix MSSID missed too many beacons in WPA+OPEN security 3. Fix auto channel selection work failed in Multi-SSID 4. Fix WDS scanning caused data link break in WDS mode 5. Fix APC scanning caused data link break in AP client mode 6. Fix AP array endurance issue 7. Fix AP client mode low throughput issue. 8. Fix Low throughput issue in noise environment. 9. Fix AP can't switch to HT20 mode when detect legacy 11g device. 10. Fix kernel panic caused by DHCP pkts forwarding in bridge. 11. Fix Hostapd crash issue when authentication type as 802.1X. 12. Fix a compatibility issue with Moto MC50 WinCE device in WPA/PSK mode. 13. Fix a Static IP assignment issue in WEBUI. 14. Fix WLAN module restart frequently when set as dynamic IP. 15. Fix memory leak issue in SNMP module. 16. Modify output power table (follow D-Link WiFi Frequency table)

Known Issues:

Firmware Version	Known Issues
V1.10	None

Related Documentation:

- DAP-2360 User Manual v1.10