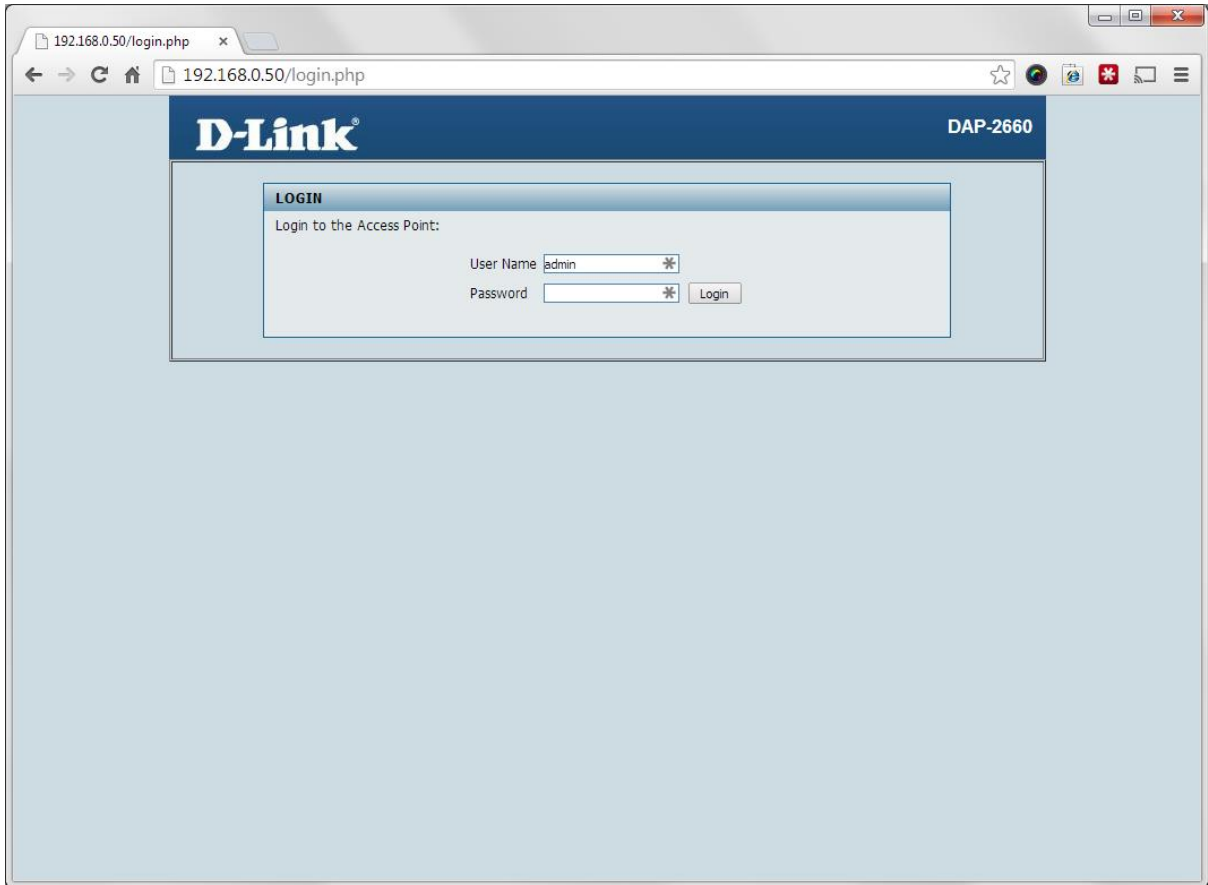


DAP-2660



192.168.0.50

admin / <blank>



DAP-2660

192.168.0.50/index.php

D-Link DAP-2660

Home Maintenance Configuration System Logout Help

- DAP-2660
 - Basic Settings
 - Wireless
 - LAN
 - IPv6
 - Advanced Settings
 - Performance
 - Wireless Resource
 - Multi-SSID
 - VLAN
 - Intrusion
 - Schedule
 - Internal RADIUS Server
 - ARP Spoofing Prevention
 - Bandwidth Optimization
 - AP Array
 - Captive Portal
 - DHCP Server
 - Filters
 - Traffic Control
 - Status
 - Device Information
 - Client Information
 - WDS Information
 - Channel Analyze
 - Statistics
 - Log

System Information

Model Name	DAP-2660
Firmware Version	1.00 16:24:25 03/25/2014
System Name	D-Link DAP-2660
Location	
System Time	01/01/1970 00:02:45
Up Time	0 Days, 00:2:46
Operation Mode(2.4GHz)	Access Point
Operation Mode(5GHz)	Access Point
MAC Address(2.4GHz)	70:62:b8:50:ab:a0
MAC Address(5GHz)	70:62:b8:50:ab:a8
IP Address	192.168.0.50

DAP-2660

192.168.0.50/index.php

D-Link DAP-2660

Home Maintenance Configuration System Logout Help

- DAP-2660
 - Basic Settings
 - Wireless
 - LAN
 - IPv6
 - Advanced Settings
 - Performance
 - Wireless Resource
 - Multi-SSID
 - VLAN
 - Intrusion
 - Schedule
 - Internal RADIUS Server
 - ARP Spoofing Prevention
 - Bandwidth Optimization
 - AP Array
 - Captive Portal
 - DHCP Server
 - Filters
 - Traffic Control
 - Status
 - Device Information
 - Client Information
 - WDS Information
 - Channel Analyze
 - Statistics
 - Log

Wireless Settings

Wireless Band: 5GHz

Mode: Access Point

Network Name (SSID): Access Point

SSID Visibility: WDS with AP

Auto Channel Selection: Enable

Channel: 149

Channel Width: Auto 20/40/80 MHz

Captive Profile: Disable

Authentication: WPA-Personal

PassPhrase Settings

WPA Mode: WPA2 Only

Cipher Type: Auto Group Key Update Interval: 3600 (Seconds)

Manual Periodical Key Change

Activated From: Sun : 00 : 00

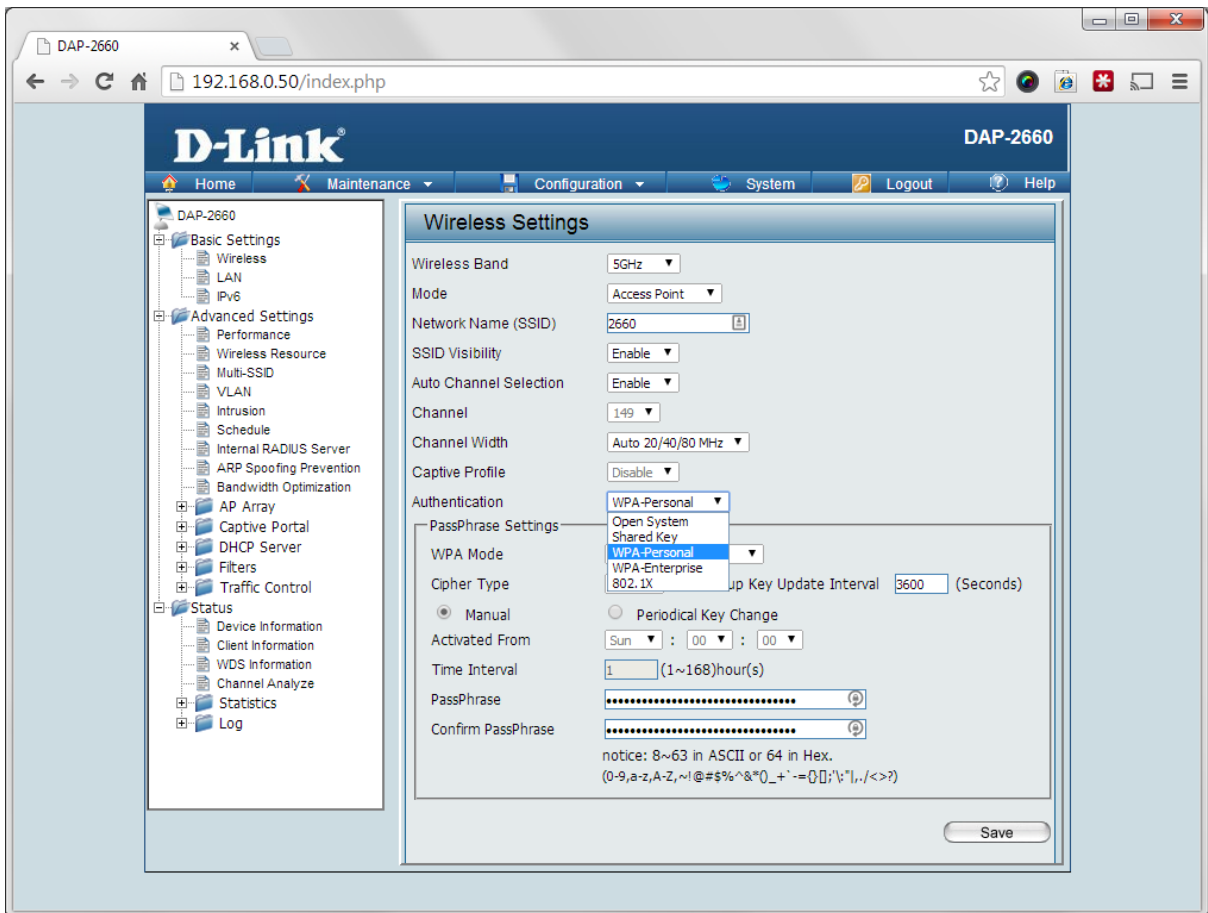
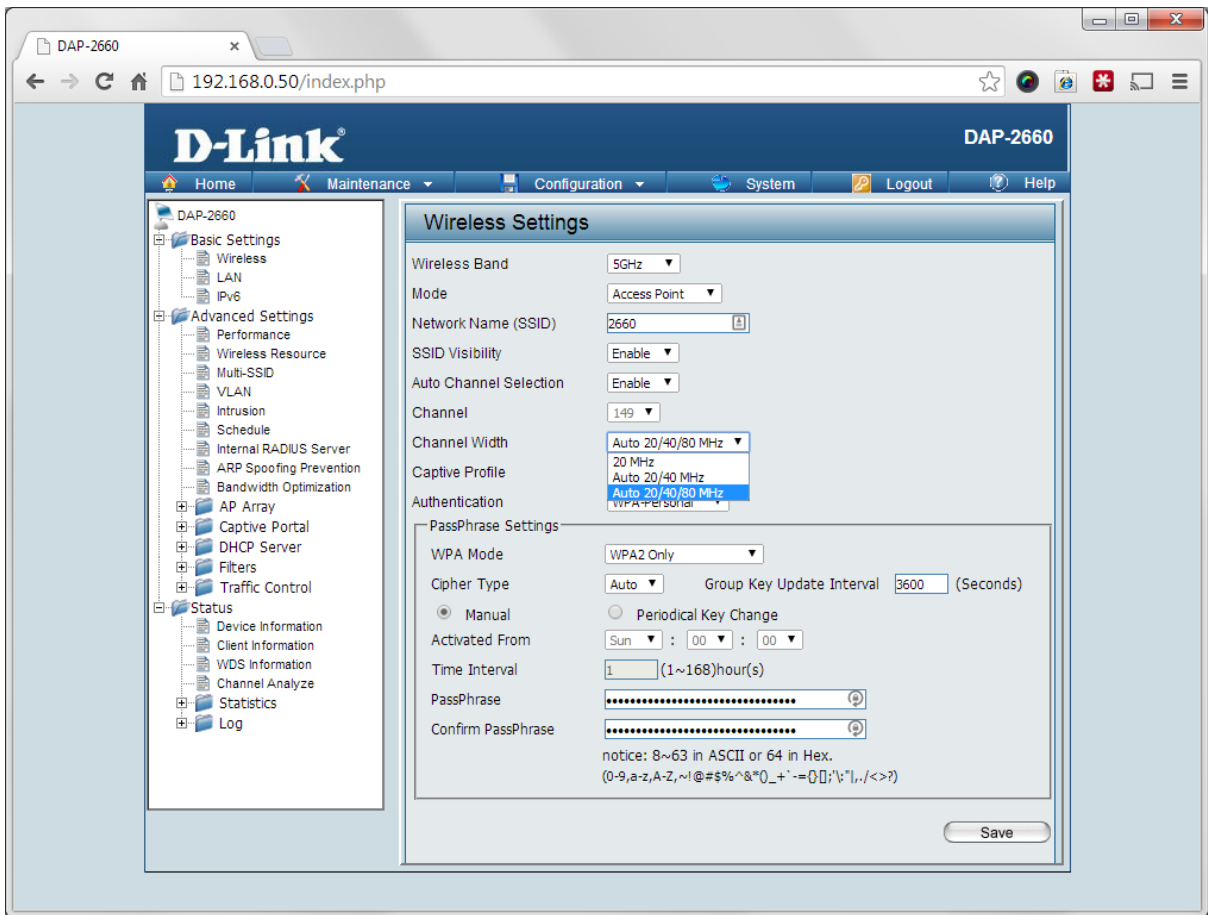
Time Interval: 1 (1~168)hour(s)

PassPhrase:

Confirm PassPhrase:

notice: 8~63 in ASCII or 64 in Hex.
(0-9,a-z,A-Z,~!@#%&*()_+`-:=0[];'\|,./<>?)

Save



DAP-2660

192.168.0.50/index.php

D-Link DAP-2660

Home Maintenance Configuration System Logout Help

- DAP-2660
 - Basic Settings
 - Wireless
 - LAN
 - IPv6
 - Advanced Settings
 - Performance
 - Wireless Resource
 - Multi-SSID
 - VLAN
 - Intrusion
 - Schedule
 - Internal RADIUS Server
 - ARP Spoofing Prevention
 - Bandwidth Optimization
 - AP Array
 - Captive Portal
 - DHCP Server
 - Filters
 - Traffic Control
 - Status
 - Device Information
 - Client Information
 - WDS Information
 - Channel Analyze
 - Statistics
 - Log

Wireless Settings

Wireless Band: 5GHz

Mode: Access Point

Network Name (SSID): 2660

SSID Visibility: Enable

Auto Channel Selection: Enable

Channel: 149

Channel Width: Auto 20/40/80 MHz

Captive Profile: Disable

Authentication: WPA-Personal

PassPhrase Settings

WPA Mode: WPA2 Only

Cipher Type: WPA2 Only

Group Key Update Interval: 3600 (Seconds)

Manual Periodical Key Change

Activated From: Sun : 00 : 00

Time Interval: 1 (1~168)hour(s)

PassPhrase:

Confirm PassPhrase:

notice: 8~63 in ASCII or 64 in Hex.
(0-9,a-z,A-Z,~!@#%&^*()_+ '-=0[];'\',/,<>?)

Save

DAP-2660

192.168.0.50/index.php

D-Link DAP-2660

Home Maintenance Configuration System Logout Help

- DAP-2660
 - Basic Settings
 - Wireless
 - LAN
 - IPv6
 - Advanced Settings
 - Performance
 - Wireless Resource
 - Multi-SSID
 - VLAN
 - Intrusion
 - Schedule
 - Internal RADIUS Server
 - ARP Spoofing Prevention
 - Bandwidth Optimization
 - AP Array
 - Captive Portal
 - DHCP Server
 - Filters
 - Traffic Control
 - Status
 - Device Information
 - Client Information
 - WDS Information
 - Channel Analyze
 - Statistics
 - Log

Wireless Settings

Wireless Band: 2.4GHz

Mode: Access Point

Network Name (SSID): 2660

SSID Visibility: Enable

Auto Channel Selection: Enable

Channel: 1

Channel Width: 20 MHz

Captive Profile: Auto 20/40 MHz

Authentication: WPA-Personal

PassPhrase Settings

WPA Mode: WPA2 Only

Cipher Type: Auto

Group Key Update Interval: 3600 (Seconds)

Manual Periodical Key Change

Activated From: Sun : 00 : 00

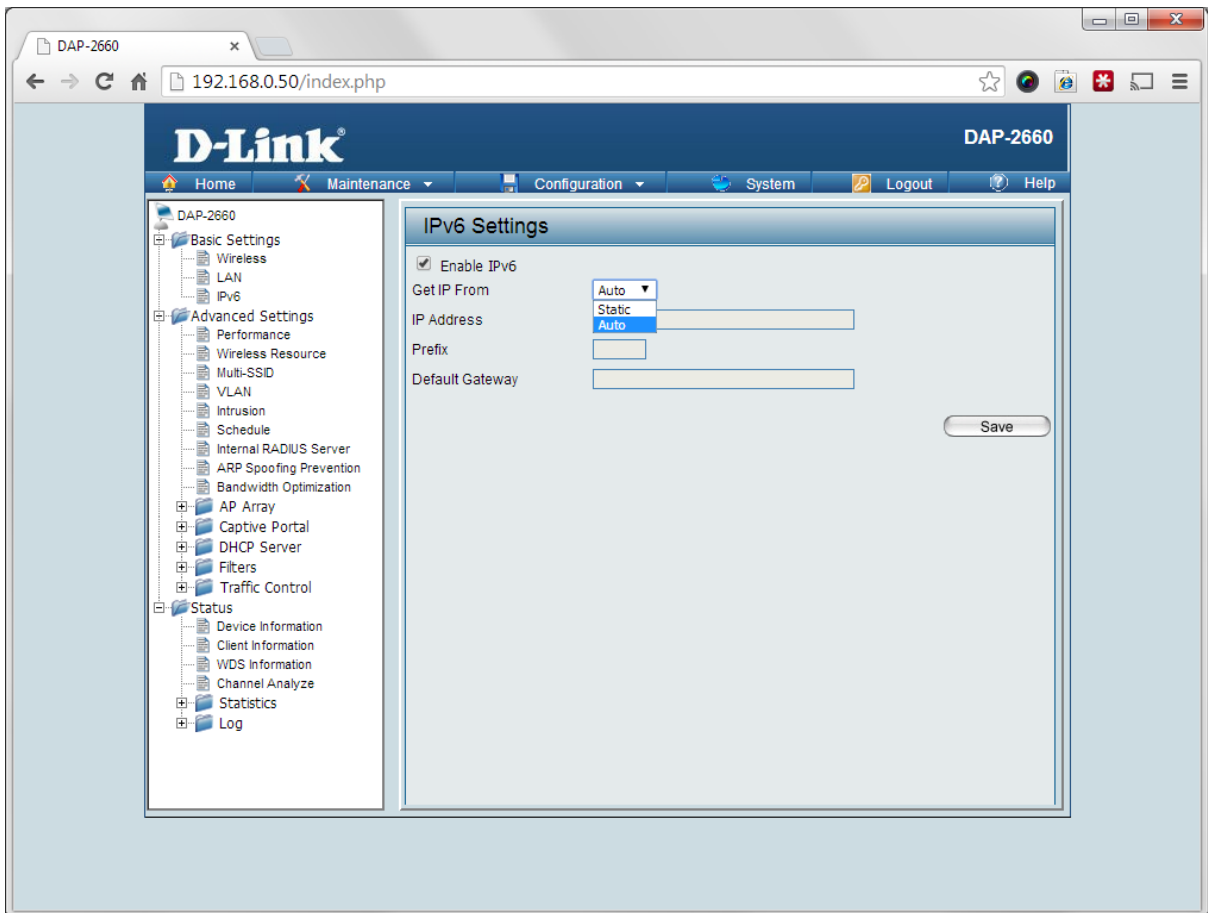
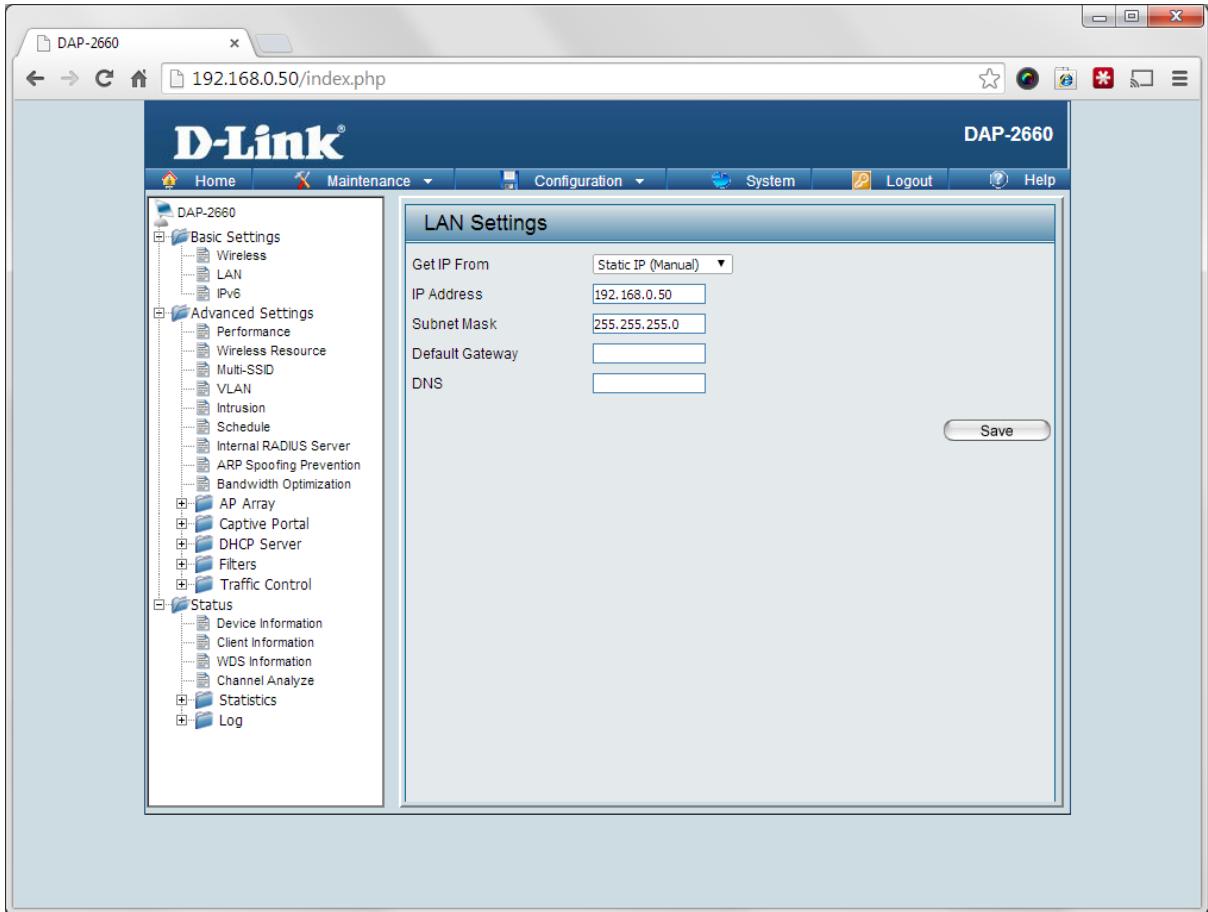
Time Interval: 1 (1~168)hour(s)

PassPhrase:

Confirm PassPhrase:

notice: 8~63 in ASCII or 64 in Hex.
(0-9,a-z,A-Z,~!@#%&^*()_+ '-=0[];'\',/,<>?)

Save



DAP-2660

192.168.0.50/index.php

D-Link DAP-2660

Home Maintenance Configuration System Logout Help

DAP-2660

- Basic Settings
 - Wireless
 - LAN
 - IPv6
- Advanced Settings
 - Performance
 - Wireless Resource
 - Multi-SSID
 - VLAN
 - Intrusion
 - Schedule
 - Internal RADIUS Server
 - ARP Spoofing Prevention
 - Bandwidth Optimization
 - AP Array
 - Captive Portal
 - DHCP Server
 - Filters
 - Traffic Control
- Status
 - Device Information
 - Client Information
 - WDS Information
 - Channel Analyze
 - Statistics
 - Log

Performance Settings

Wireless band: 5GHz

Wireless: On

Wireless Mode: Mixed 802.11ac

Data Rate: Mixed 802.11n, 802.11a, 802.11a Only, 802.11n Only, Mixed 802.11ac

Beacon Interval (40-500): 1

DTIM Interval (1-15): 1

Transmit Power: 100%

WMM (Wi-Fi Multimedia): Enable

Ack Time Out (5GHz, 25~200): 25 (μs)

Short GI: Enable

IGMP Snooping: Disable

Multicast Rate: Disable (Mbps)

Multicast Bandwidth Control: Disable

Maximum Multicast Bandwidth: 100 kbps

HT20/40 Coexistence: Disable

Save

DAP-2660

192.168.0.50/index.php

D-Link DAP-2660

Home Maintenance Configuration System Logout Help

DAP-2660

- Basic Settings
 - Wireless
 - LAN
 - IPv6
- Advanced Settings
 - Performance
 - Wireless Resource
 - Multi-SSID
 - VLAN
 - Intrusion
 - Schedule
 - Internal RADIUS Server
 - ARP Spoofing Prevention
 - Bandwidth Optimization
 - AP Array
 - Captive Portal
 - DHCP Server
 - Filters
 - Traffic Control
- Status
 - Device Information
 - Client Information
 - WDS Information
 - Channel Analyze
 - Statistics
 - Log

Performance Settings

Wireless band: 2.4GHz

Wireless: On

Wireless Mode: Mixed 802.11n, 802.11g and 802.11b

Data Rate: Mixed 802.11n, 802.11n and 802.11b, Mixed 802.11g and 802.11b, 802.11n Only

Beacon Interval (40-500): 100

DTIM Interval (1-15): 1

Transmit Power: 100%

WMM (Wi-Fi Multimedia): Enable

Ack Time Out (2.4GHz, 48~200): 48 (μs)

Short GI: Enable

IGMP Snooping: Disable

Multicast Rate: Disable (Mbps)

Multicast Bandwidth Control: Disable

Maximum Multicast Bandwidth: 100 kbps

HT20/40 Coexistence: Enable

Save

DAP-2660

192.168.0.50/index.php

D-Link DAP-2660

Home Maintenance Configuration System Logout Help

- DAP-2660
 - Basic Settings
 - Wireless
 - LAN
 - IPv6
 - Advanced Settings
 - Performance
 - Wireless Resource
 - Multi-SSID
 - VLAN
 - Intrusion
 - Schedule
 - Internal RADIUS Server
 - ARP Spoofing Prevention
 - Bandwidth Optimization
 - AP Array
 - Captive Portal
 - DHCP Server
 - Filters
 - Traffic Control
 - Status
 - Device Information
 - Client Information
 - WDS Information
 - Channel Analyze
 - Statistics
 - Log

Wireless Resource Control

Wireless band: 5GHz

Band Steering: Disable

Band Steering Age: 180 (s)

Band Steering Difference: 2

Band Steering Refuse Number: 3

Connection Limit: Disable

User Limit (0 - 64): 20

11n Preferred: Disable

Network Utilization: 100%

Aging out: Disable

RSSI Threshold: 100%

Data Rate Threshold: 54

ACL RSSI: Disable

ACL RSSI Threshold: 60%

Save

DAP-2660

192.168.0.50/index.php

D-Link DAP-2660

Home Maintenance Configuration System Logout Help

- DAP-2660
 - Basic Settings
 - Wireless
 - LAN
 - IPv6
 - Advanced Settings
 - Performance
 - Wireless Resource
 - Multi-SSID
 - VLAN
 - Intrusion
 - Schedule
 - Internal RADIUS Server
 - ARP Spoofing Prevention
 - Bandwidth Optimization
 - AP Array
 - Captive Portal
 - DHCP Server
 - Filters
 - Traffic Control
 - Status
 - Device Information
 - Client Information
 - WDS Information
 - Channel Analyze
 - Statistics
 - Log

Multi-SSID Settings

Enable Multi-SSID Enable Priority

Wireless Settings

Band: 5 GHz

Index: Primary SSID

SSID: 2660

SSID Visibility: Enable

Security: WPA-Personal

Priority: 0

WMM (Wi-Fi Multimedia): Enable

Captive Profile: Disable

Add

Index	SSID	Band	Encryption	Delete
Primary SSID	2660	5 GHz	WPA2-Personal	

Save

DAP-2660

192.168.0.50/index.php

D-Link DAP-2660

Home Maintenance Configuration System Logout Help

- DAP-2660
 - Basic Settings
 - Wireless
 - LAN
 - IPv6
 - Advanced Settings
 - Performance
 - Wireless Resource
 - Multi-SSID
 - VLAN
 - Intrusion
 - Schedule
 - Internal RADIUS Server
 - ARP Spoofing Prevention
 - Bandwidth Optimization
 - AP Array
 - Captive Portal
 - DHCP Server
 - Filters
 - Traffic Control
 - Status
 - Device Information
 - Client Information
 - WDS Information
 - Channel Analyze
 - Statistics
 - Log

VLAN Settings

VLAN Status : Disable Enable

VLAN Mode : Static(2.4G), Static(5G)

VLAN List		Port List	Add/Edit VLAN	PVID Setting
VID	VLAN Name	Untag VLAN Ports	Tag VLAN Ports	Edit Delete
1	default	Mgmt, LAN, Primary(2.4G), S-1(2.4G), S-2(2.4G), S-3(2.4G), S-4(2.4G), S-5(2.4G), S-6(2.4G), S-7(2.4G), W-1(2.4G), W-2(2.4G), W-3(2.4G), W-4(2.4G), W-5(2.4G), W-6(2.4G), W-7(2.4G), W-8(2.4G), Primary(5G), S-1(5G), S-2(5G), S-3(5G), S-4(5G), S-5(5G), S-6(5G), S-7(5G), W-1(5G), W-2(5G), W-3(5G), W-4(5G), W-5(5G), W-6(5G), W-7(5G), W-8(5G)		

DAP-2660

192.168.0.50/index.php

D-Link® DAP-2660

Home Maintenance Configuration System Logout Help

DAP-2660

- Basic Settings
- Advanced Settings
 - Performance
 - Wireless Resource
 - Multi-SSID
 - VLAN
 - Intrusion
 - Schedule
 - Internal RADIUS Server
 - ARP Spoofing Prevention
 - Bandwidth Optimization
- AP Array
- Captive Portal
- DHCP Server
- Filters
- Traffic Control
- Status

Wireless Intrusion Protection

Wireless Band: 5GHz

Detect

AP List

Type	Band	CH	SSID	BSSID	Last Seen	Status
<input type="checkbox"/> New	N	36	Guest	44:AD:D9:61:52:BD	0 Days, 00:11:35	Up
<input type="checkbox"/> New	N	36	MG Office	44:AD:D9:61:52:BE	0 Days, 00:11:35	Up
<input type="checkbox"/> New	N	36	bkogc	F8:C0:01:A6:4F:81	0 Days, 00:11:35	Up
<input type="checkbox"/> New	A	36	BKmobile	F8:C0:01:A6:4F:83	0 Days, 00:11:35	Up
<input type="checkbox"/> New	A	36	BKscan	F8:C0:01:A6:4F:87	0 Days, 00:11:35	Up
<input type="checkbox"/> New	N	36	DEPOT	44:AD:D9:61:52:BF	0 Days, 00:11:35	Up

Set as Valid Set as Neighborhood Set as Rogue Set as New

Mark All New Access Points as Valid Access Points
 Mark All New Access Points as Rogue Access Points

Save

DAP-2660

192.168.0.50/index.php

D-Link DAP-2660

Home Maintenance Configuration System Logout Help

- DAP-2660
 - Basic Settings
 - Advanced Settings
 - Performance
 - Wireless Resource
 - Multi-SSID
 - VLAN
 - Intrusion
 - Schedule
 - Internal RADIUS Server
 - ARP Spoofing Prevention
 - Bandwidth Optimization
 - AP Array
 - Captive Portal
 - DHCP Server
 - Filters
 - Traffic Control
 - Status

Wireless Schedule Settings

Wireless Schedule

Add Schedule Rule

Name

Index

SSID

Day(s) All Week Select Day(s)

Sun Mon Tue Wed Thu Fri Sat

All Day(s)

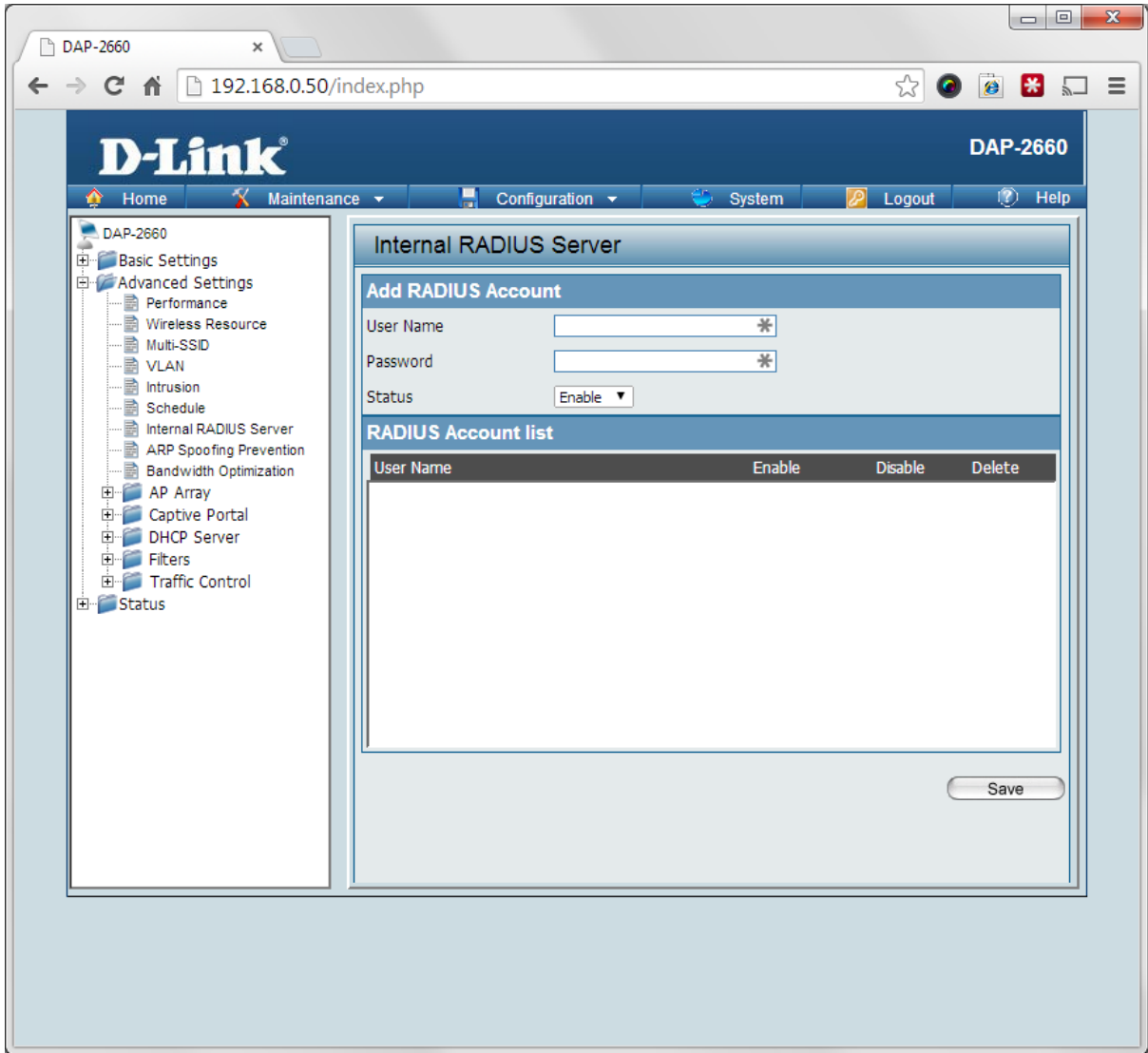
Start Time : (hour:minute, 24 hour time)

End Time : (hour:minute, 24 hour time) Overnight

Schedule Rule List

Name	SSID Index	SSID	Day(s)	Time Frame	Wireless Edit	DEL
+						

+: To the end time of the next day overnight.



DAP-2660

192.168.0.50/index.php

D-Link DAP-2660

Home Maintenance Configuration System Logout Help

- DAP-2660
 - Basic Settings
 - Advanced Settings
 - Performance
 - Wireless Resource
 - Multi-SSID
 - VLAN
 - Intrusion
 - Schedule
 - Internal RADIUS Server
 - ARP Spoofing Prevention
 - Bandwidth Optimization
 - AP Array
 - Captive Portal
 - DHCP Server
 - Filters
 - Traffic Control
 - Status

ARP Spoofing Prevention Settings

ARP Spoofing Prevention Disable ▾

Add Gateway Address

Gateway IP Address

Gateway MAC Address : : : : :

Gateway Address List

Total Entries: 0

Gateway IP Address	Gateway MAC Address	Edit	Delete
--------------------	---------------------	------	--------

DAP-2660

192.168.0.50/index.php

D-Link®

DAP-2660

Home Maintenance Configuration System Logout Help

- DAP-2660
 - Basic Settings
 - Advanced Settings
 - Performance
 - Wireless Resource
 - Multi-SSID
 - VLAN
 - Intrusion
 - Schedule
 - Internal RADIUS Server
 - ARP Spoofing Prevention
 - Bandwidth Optimization
 - AP Array
 - Captive Portal
 - DHCP Server
 - Filters
 - Traffic Control
 - Status

Bandwidth Optimization

Enable Bandwidth Optimization

Downlink Bandwidth Mbits/sec

Uplink Bandwidth Mbits/sec

Add Bandwidth Optimization Rule

Rule Type

Band

SSID Index

Downlink Speed Kbits/sec

Uplink Speed Kbits/sec

Bandwidth Optimization Rules

Band	Type	SSID Index	Downlink Speed	Uplink Speed	Edit	Del
------	------	------------	----------------	--------------	------	-----

DAP-2660

192.168.0.50/index.php

D-Link®

DAP-2660

Home Maintenance Configuration System Logout Help

- DAP-2660
 - Basic Settings
 - Advanced Settings
 - Performance
 - Wireless Resource
 - Multi-SSID
 - VLAN
 - Intrusion
 - Schedule
 - Internal RADIUS Server
 - ARP Spoofing Prevention
 - Bandwidth Optimization
 - AP Array
 - AP Array Scan
 - Configuration Settings
 - Auto-RF
 - Load Balance
 - Captive Portal
 - DHCP Server
 - Filters
 - Traffic Control
 - Status

AP Array Scan

Enable AP Array Version:2.0

Master Backup Master Slave

AP Array Name:

AP Array Password:

Scan AP Array List:

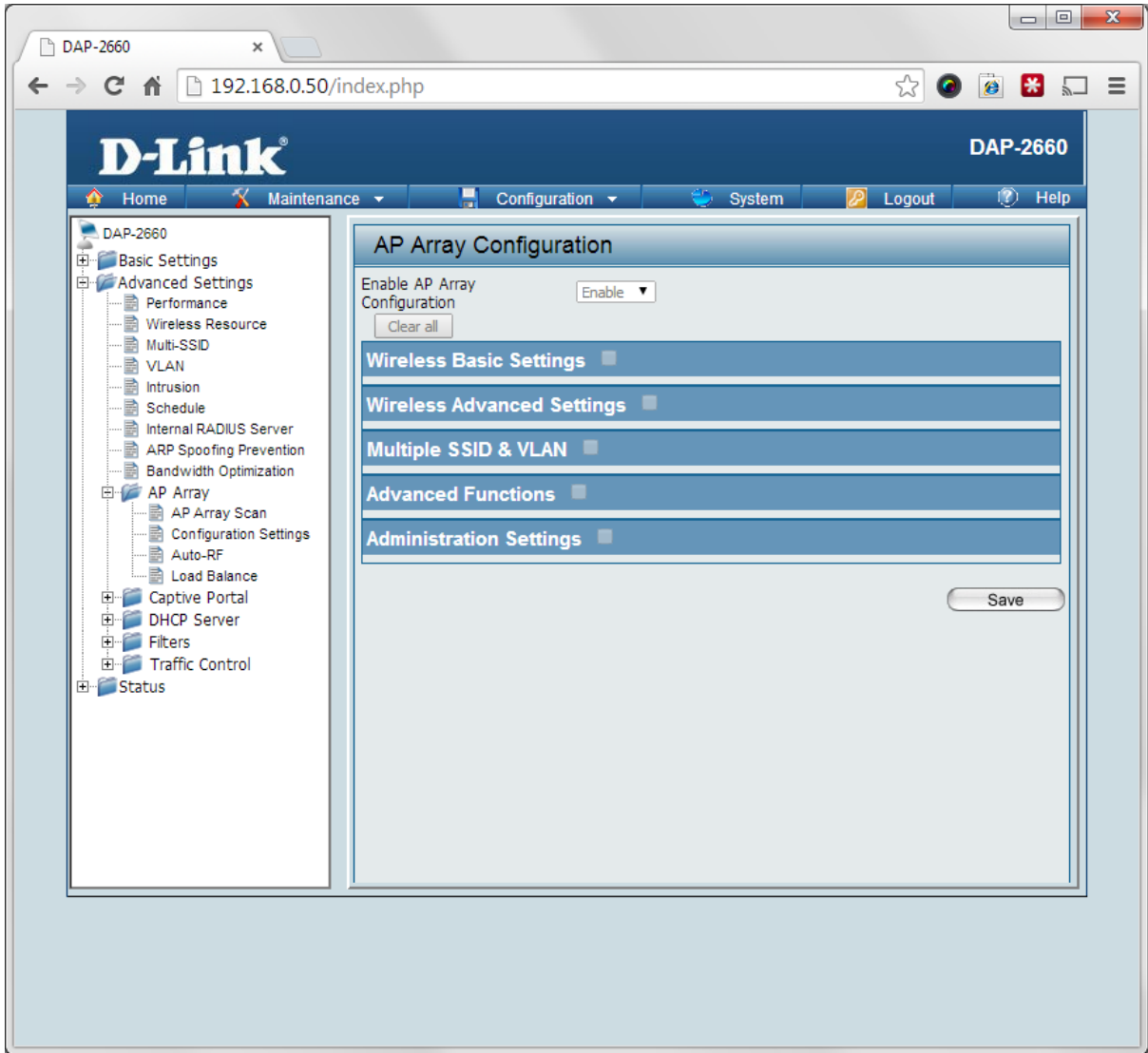
Connection Status: Disconnect

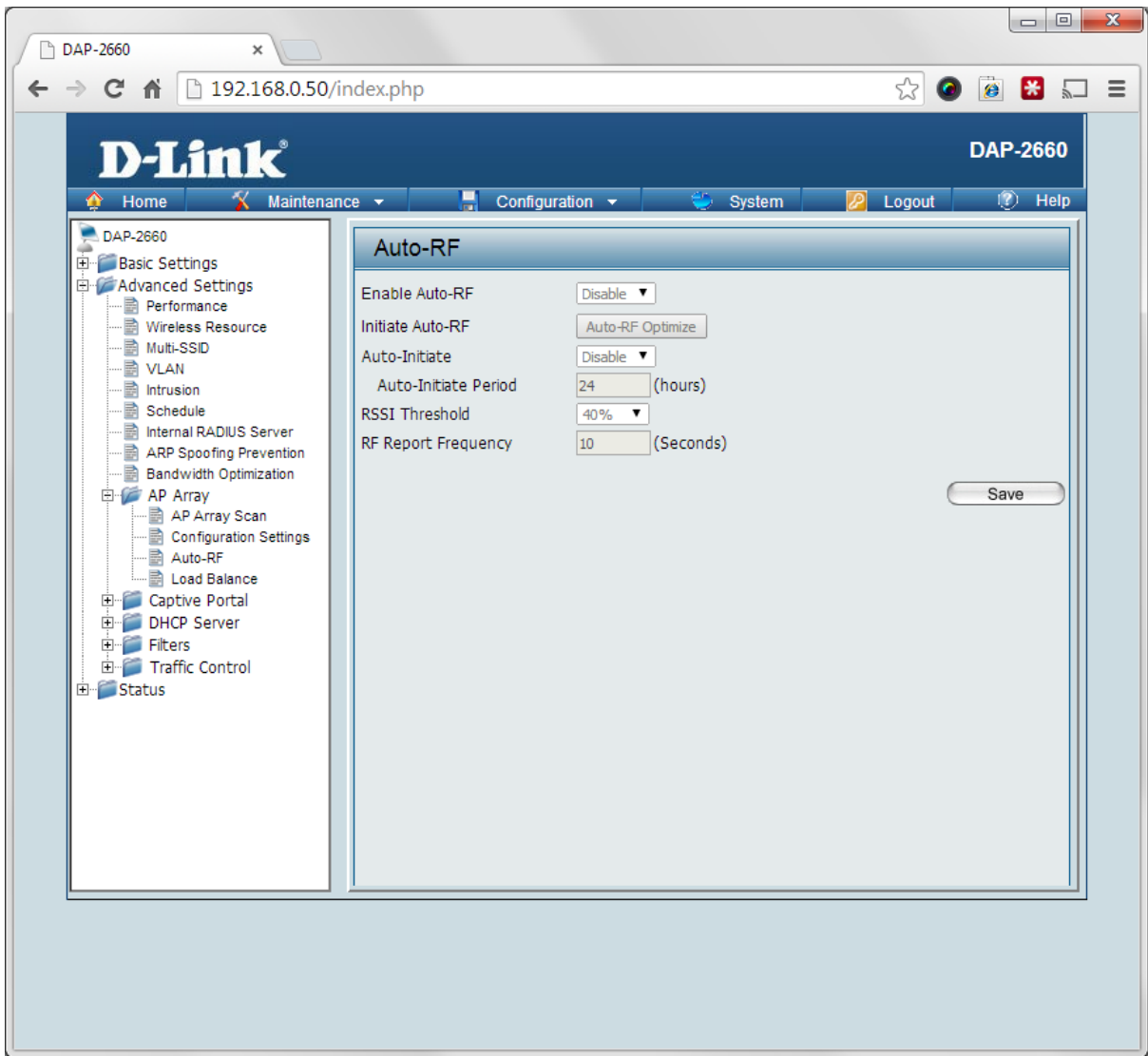
AP Array List

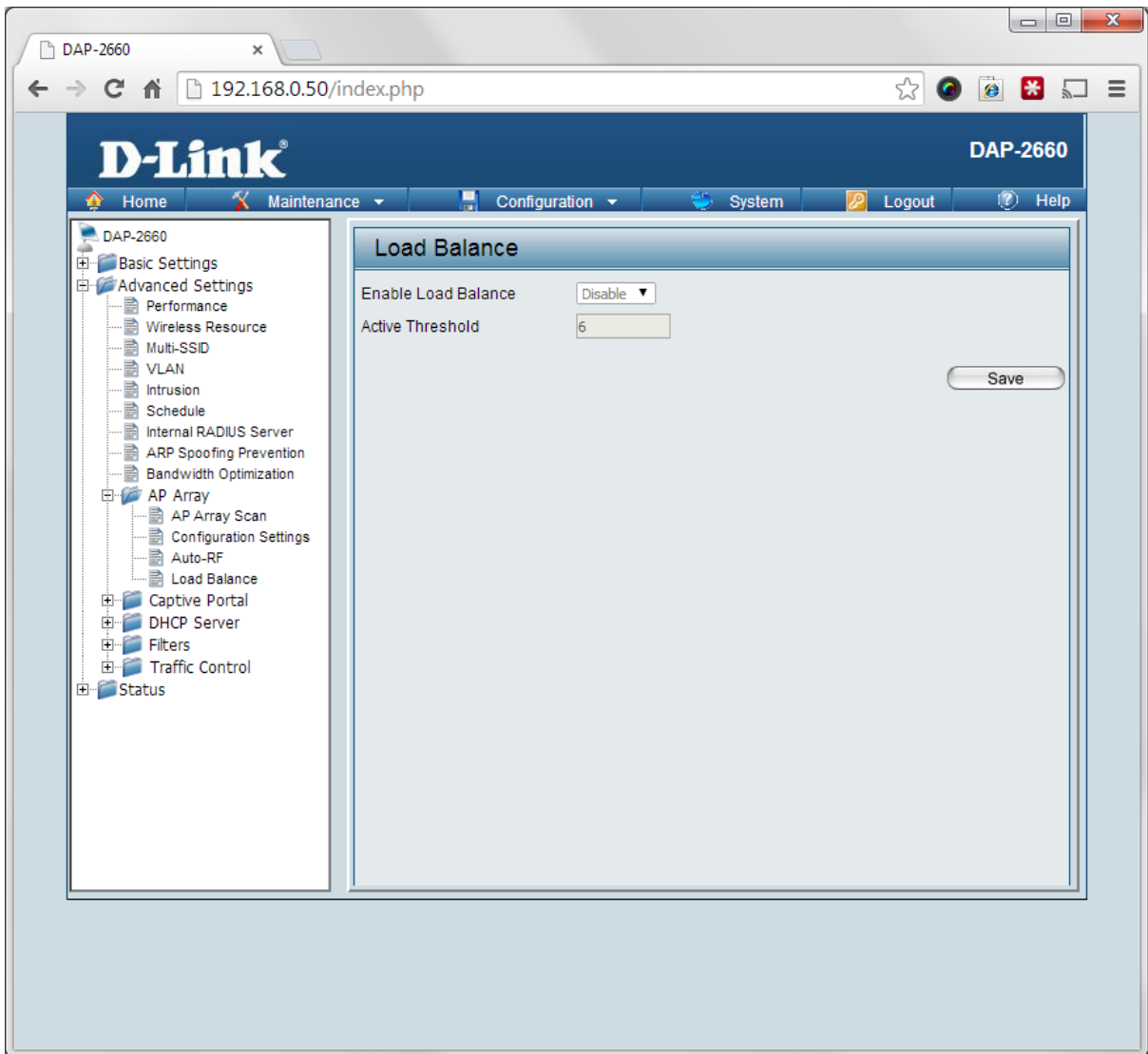
Array Name	Master IP	MAC	Master	Backup Master	Slave	Total
------------	-----------	-----	--------	---------------	-------	-------

Current Members

Index	Role	IP Address	MAC Address	Location
-------	------	------------	-------------	----------







DAP-2660

192.168.0.50/index.php

D-Link DAP-2660

Home Maintenance Configuration System Logout Help

- DAP-2660
 - Basic Settings
 - Advanced Settings
 - Performance
 - Wireless Resource
 - Multi-SSID
 - VLAN
 - Intrusion
 - Schedule
 - Internal RADIUS Server
 - ARP Spoofing Prevention
 - Bandwidth Optimization
 - AP Array
 - Captive Portal
 - Authentication Settings
 - Login Page Upload
 - WEB Redirection
 - DHCP Server
 - Filters
 - Traffic Control
 - Status

Captive Portal Authentication

Encryption Type:

- Passcode
- Username/Password
- Remote RADIUS
- LDAP
- POP3

Passcode Settings

Passcode Quantity:

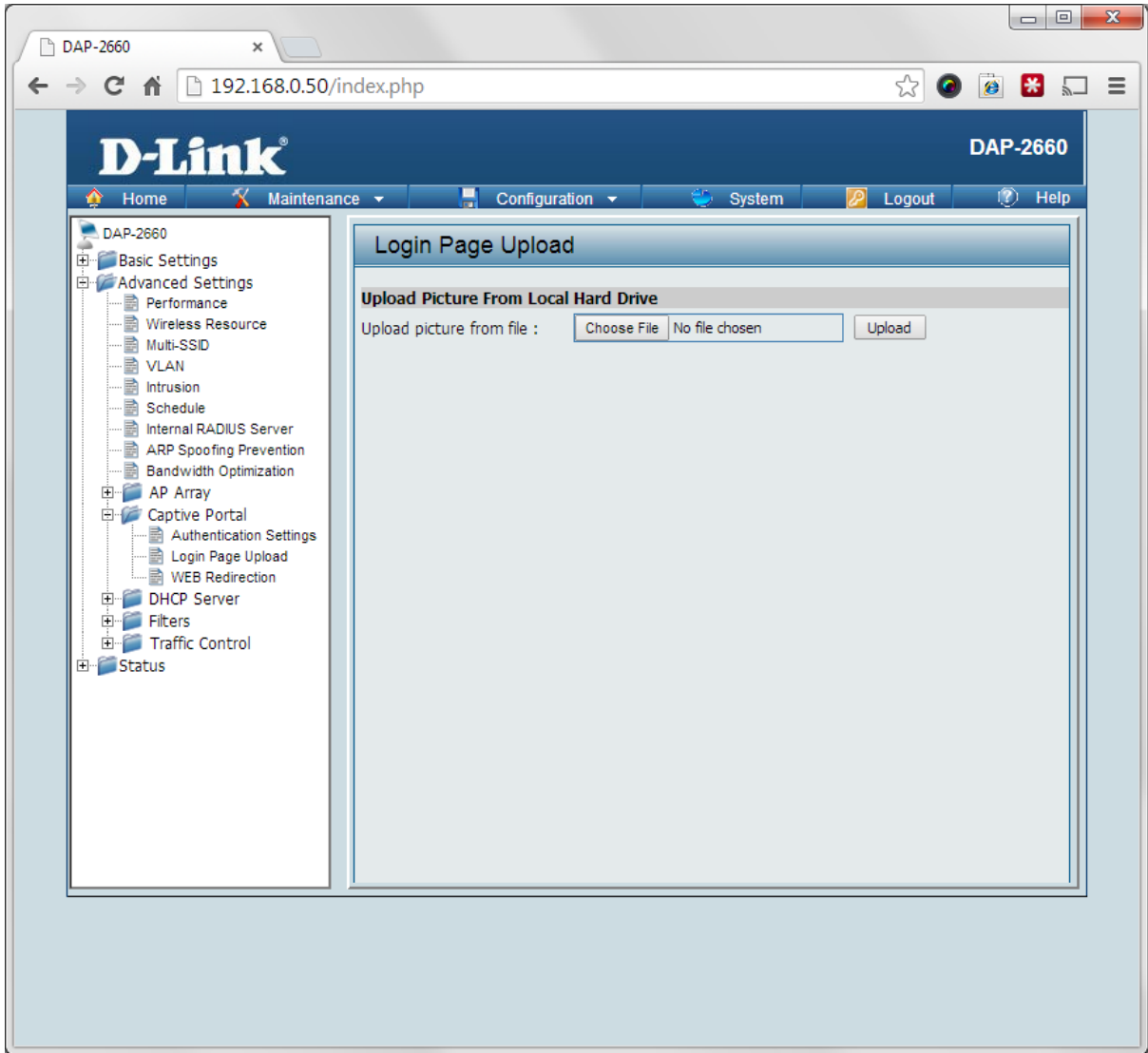
Duration:

Last Active Day: Year Month Day

User Limit:

Passcode	Duration	Last Active Day	User Limit	Delete

Captive Profile	Edit	Delete



The image shows a web browser window displaying the configuration interface for a D-Link DAP-2660 device. The browser's address bar shows the URL `192.168.0.50/index.php`. The page features a blue header with the D-Link logo and the device model name "DAP-2660". Below the header is a navigation menu with tabs for Home, Maintenance, Configuration, System, Logout, and Help. A left-hand sidebar contains a tree view of configuration categories, including Basic Settings, Advanced Settings (with sub-items like Performance, Wireless Resource, Multi-SSID, VLAN, Intrusion, Schedule, Internal RADIUS Server, ARP Spoofing Prevention, and Bandwidth Optimization), AP Array, Captive Portal (with sub-items like Authentication Settings, Login Page Upload, and WEB Redirection), DHCP Server, Filters, Traffic Control, and Status. The main content area is titled "Web Redirection" and contains two settings: "Web Redirection" with an unchecked checkbox and "Web Site" with an empty text input field. A "Save" button is located at the bottom right of the configuration area.

DAP-2660

192.168.0.50/index.php

D-Link®

DAP-2660

Home Maintenance Configuration System Logout Help

- DAP-2660
 - Basic Settings
 - Advanced Settings
 - Performance
 - Wireless Resource
 - Multi-SSID
 - VLAN
 - Intrusion
 - Schedule
 - Internal RADIUS Server
 - ARP Spoofing Prevention
 - Bandwidth Optimization
 - AP Array
 - Captive Portal
 - DHCP Server
 - Dynamic Pool Settings
 - Static Pool Settings
 - Current IP Mapping List
 - Filters
 - Traffic Control
 - Status

Dynamic Pool Settings

DHCP Server Control

Function Enable/Disable:

Dynamic Pool Settings

IP Assigned From	<input type="text" value="192.168.0.20"/>
The Range of Pool (1-254)	<input type="text" value="235"/>
Subnet Mask	<input type="text" value="255.255.255.0"/>
Gateway	<input type="text"/>
WINS	<input type="text"/>
DNS	<input type="text"/>
Domain Name	<input type="text" value="dlink-ap"/>
Lease Time (60 - 31536000 sec)	<input type="text" value="604800"/>

DAP-2660

192.168.0.50/index.php

D-Link DAP-2660

Home Maintenance Configuration System Logout Help

- DAP-2660
 - Basic Settings
 - Advanced Settings
 - Performance
 - Wireless Resource
 - Multi-SSID
 - VLAN
 - Intrusion
 - Schedule
 - Internal RADIUS Server
 - ARP Spoofing Prevention
 - Bandwidth Optimization
 - AP Array
 - Captive Portal
 - DHCP Server
 - Dynamic Pool Settings
 - Static Pool Settings
 - Current IP Mapping List
 - Filters
 - Traffic Control
 - Status

Static Pool Settings

DHCP Server Control

Function Enable/Disable:

Static Pool Setting

Host Name:

Assigned IP:

Assigned MAC Address: : : : : :

Subnet Mask:

Gateway:

WINS:

DNS:

Domain Name:

Host Name	MAC Address	IP Address	Edit	Delete
-----------	-------------	------------	------	--------

DAP-2660

192.168.0.50/index.php

D-Link DAP-2660

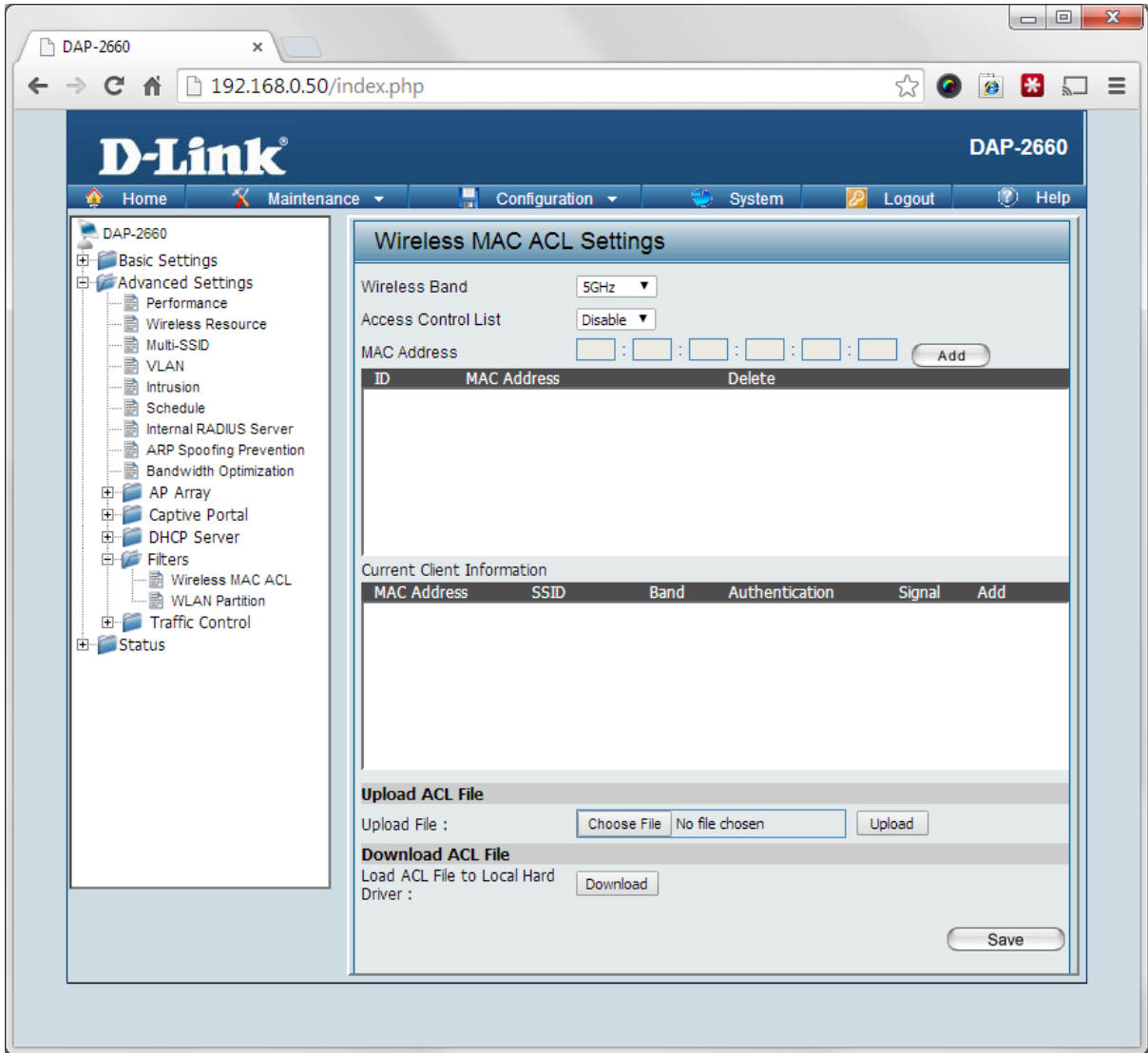
Home Maintenance Configuration System Logout Help

- DAP-2660
 - Basic Settings
 - Advanced Settings
 - Performance
 - Wireless Resource
 - Multi-SSID
 - VLAN
 - Intrusion
 - Schedule
 - Internal RADIUS Server
 - ARP Spoofing Prevention
 - Bandwidth Optimization
 - AP Array
 - Captive Portal
 - DHCP Server
 - Dynamic Pool Settings
 - Static Pool Settings
 - Current IP Mapping List
 - Filters
 - Traffic Control
 - Status

Current IP Mapping List

Current DHCP Dynamic Pools			
Host Name	Binding MAC Address	Assigned IP Address	Lease Time

Current DHCP Static Pools		
Host Name	Binding MAC Address	Assigned IP Address



DAP-2660

192.168.0.50/index.php

D-Link®

DAP-2660

Home Maintenance Configuration System Logout Help

- DAP-2660
 - Basic Settings
 - Advanced Settings
 - Performance
 - Wireless Resource
 - Multi-SSID
 - VLAN
 - Intrusion
 - Schedule
 - Internal RADIUS Server
 - ARP Spoofing Prevention
 - Bandwidth Optimization
 - AP Array
 - Captive Portal
 - DHCP Server
 - Filters
 - Wireless MAC ACL
 - WLAN Partition
 - Traffic Control
 - Status

WLAN Partition

Wireless Band: 5GHz

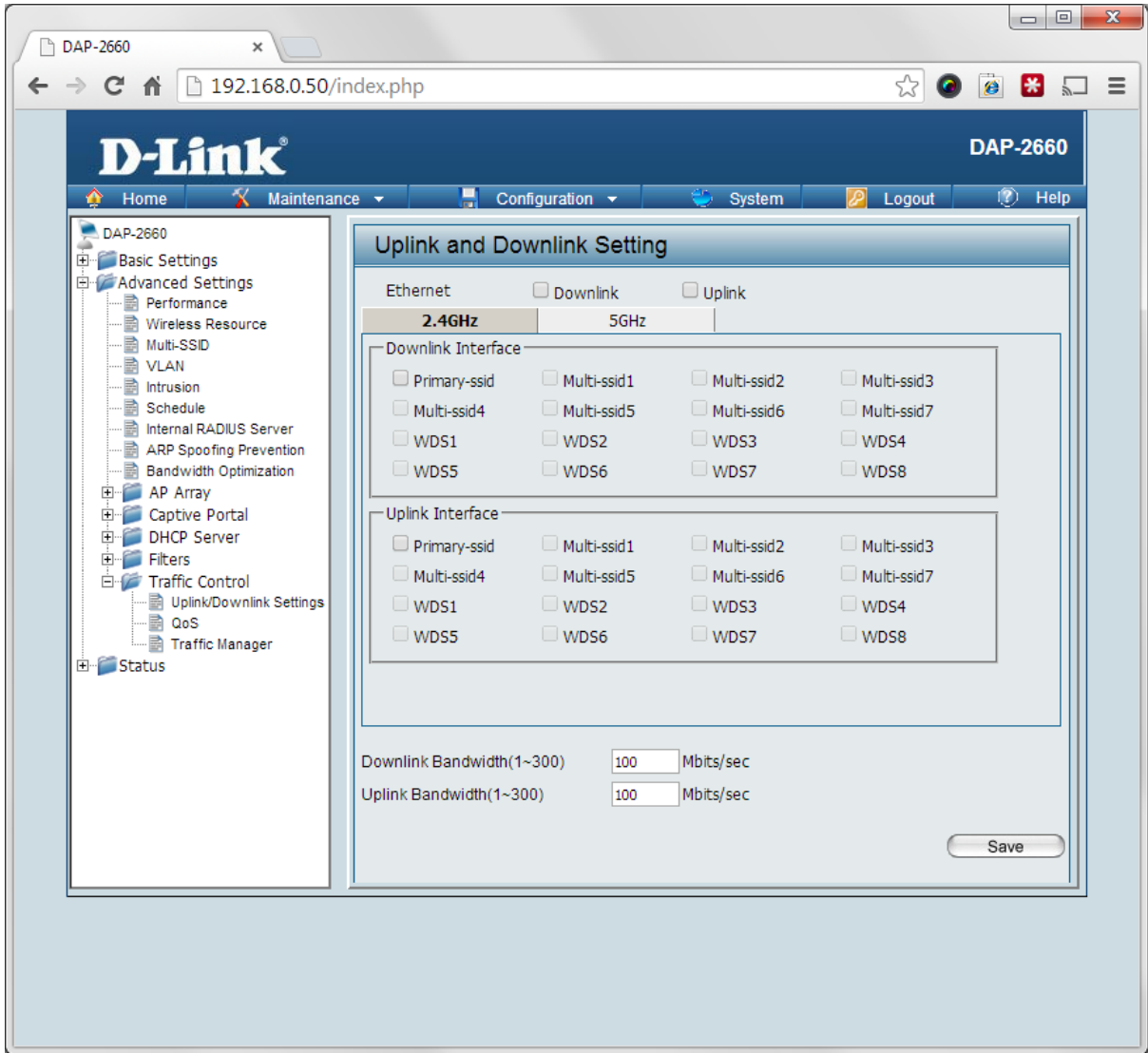
Link Integrity: Disable

Ethernet to WLAN Access: Enable

Internal Station Connection

Primary SSID	<input checked="" type="radio"/> Enable	<input type="radio"/> Disable	<input type="radio"/> Guest mode
Multi-SSID 1	<input checked="" type="radio"/> Enable	<input type="radio"/> Disable	<input type="radio"/> Guest mode
Multi-SSID 2	<input checked="" type="radio"/> Enable	<input type="radio"/> Disable	<input type="radio"/> Guest mode
Multi-SSID 3	<input checked="" type="radio"/> Enable	<input type="radio"/> Disable	<input type="radio"/> Guest mode
Multi-SSID 4	<input checked="" type="radio"/> Enable	<input type="radio"/> Disable	<input type="radio"/> Guest mode
Multi-SSID 5	<input checked="" type="radio"/> Enable	<input type="radio"/> Disable	<input type="radio"/> Guest mode
Multi-SSID 6	<input checked="" type="radio"/> Enable	<input type="radio"/> Disable	<input type="radio"/> Guest mode
Multi-SSID 7	<input checked="" type="radio"/> Enable	<input type="radio"/> Disable	<input type="radio"/> Guest mode

Save



DAP-2660

192.168.0.50/index.php

D-Link®

DAP-2660

Home Maintenance Configuration System Logout Help

- DAP-2660
 - Basic Settings
 - Advanced Settings
 - Performance
 - Wireless Resource
 - Multi-SSID
 - VLAN
 - Intrusion
 - Schedule
 - Internal RADIUS Server
 - ARP Spoofing Prevention
 - Bandwidth Optimization
 - AP Array
 - Captive Portal
 - DHCP Server
 - Filters
 - Traffic Control
 - Uplink/Downlink Settings
 - QoS
 - Traffic Manager
 - Status

QoS

Enable QoS

Advanced QoS

Downlink Bandwidth	<input type="text" value="100"/>	Mbits/sec
Uplink Bandwidth	<input type="text" value="100"/>	Mbits/sec
ACK/DHCP/ICMP/DNS Priority	Highest Priority	Limit <input type="text" value="100"/> % Port <input type="text" value="53,67,68,546,547"/>
Web Traffic Priority	Third Priority	Limit <input type="text" value="100"/> % Port <input type="text" value="80,443,3128,8080"/>
Mail Traffic Priority	Second Priority	Limit <input type="text" value="100"/> % Port <input type="text" value="25,110,465,995"/>
Ftp Traffic Priority	Low Priority	Limit <input type="text" value="100"/> % Port <input type="text" value="20,21"/>
User Defined-1 Priority	Highest Priority	Limit <input type="text" value="100"/> % Port <input type="text" value="0"/> - <input type="text" value="0"/>
User Defined-2 Priority	Second Priority	Limit <input type="text" value="100"/> % Port <input type="text" value="0"/> - <input type="text" value="0"/>
User Defined-3 Priority	Third Priority	Limit <input type="text" value="100"/> % Port <input type="text" value="0"/> - <input type="text" value="0"/>
User Defined-4 Priority	Low Priority	Limit <input type="text" value="100"/> % Port <input type="text" value="0"/> - <input type="text" value="0"/>
Other Traffic Priority	Low Priority	Limit <input type="text" value="100"/> %

Save

DAP-2660

192.168.0.50/index.php

D-Link®

DAP-2660

Home Maintenance Configuration System Logout Help

- DAP-2660
 - Basic Settings
 - Advanced Settings
 - Performance
 - Wireless Resource
 - Multi-SSID
 - VLAN
 - Intrusion
 - Schedule
 - Internal RADIUS Server
 - ARP Spoofing Prevention
 - Bandwidth Optimization
 - AP Array
 - Captive Portal
 - DHCP Server
 - Filters
 - Traffic Control
 - Uplink/Downlink Settings
 - QoS
 - Traffic Manager
 - Status

Traffic Manager

Traffic Manager

Unlisted Clients Traffic Deny Forward

Downlink Bandwidth Mbits/sec

Uplink Bandwidth Mbits/sec

Add Traffic Manager Rule

Name

Client IP(optional)

Client MAC(optional)

Downlink Speed Mbits/sec

Uplink Speed Mbits/sec

Traffic Manager Rules

Name	Client IP	Client MAC	Downlink Speed	Uplink Speed	Edit	Del
------	-----------	------------	----------------	--------------	------	-----

DAP-2660

192.168.0.50/index.php

D-Link DAP-2660

Home Maintenance Configuration System Logout Help

DAP-2660

- Basic Settings
- Advanced Settings
 - Performance
 - Wireless Resource
 - Multi-SSID
 - VLAN
 - Intrusion
 - Schedule
 - Internal RADIUS Server
 - ARP Spoofing Prevention
 - Bandwidth Optimization
- AP Array
- Captive Portal
- DHCP Server
- Filters
- Traffic Control
- Status
 - Device Information
 - Client Information
 - WDS Information
 - Channel Analyze
 - Statistics
 - Log

Device Information

Firmware Version: 1.00

Ethernet MAC Address: 70:62:b8:50:ab:a0

Wireless MAC Address(2.4GHz): Primary: 70:62:b8:50:ab:a0
 SSID 1~7: 70:62:b8:50:ab:a1 ~ 70:62:b8:50:ab:a7

Wireless MAC Address(5GHz): Primary: 70:62:b8:50:ab:a8
 SSID 1~7: 70:62:b8:50:ab:a9 ~ 70:62:b8:50:ab:af

Ethernet

IP Address: 192.168.0.50

Subnet Mask: 255.255.255.0

Gateway: N/A

DNS

Wireless (2.4GHz)

Network Name (SSID): 2660

Channel: 1

Data Rate: Auto

Security: WPA2-Personal / Auto

Wireless (5GHz)

Network Name (SSID): 2660

Channel: 149

Data Rate: Auto

Security: WPA2-Personal / Auto

AP Array

AP Array: d-link

Role: Slave

Location

Device Status

DAP-2660

192.168.0.50/index.php

D-Link®

DAP-2660

Home Maintenance Configuration System Logout Help

- DAP-2660
 - Basic Settings
 - Advanced Settings
 - Performance
 - Wireless Resource
 - Multi-SSID
 - VLAN
 - Intrusion
 - Schedule
 - Internal RADIUS Server
 - ARP Spoofing Prevention
 - Bandwidth Optimization
 - AP Array
 - Captive Portal
 - DHCP Server
 - Filters
 - Traffic Control
 - Status
 - Device Information
 - Client Information
 - WDS Information
 - Channel Analyze
 - Statistics
 - Log

Client Information

Client Information Station association (2.4GHz) : 0

SSID	MAC	Band	Authentication	RSSI	Power Saving Mode
Client Information Station association(5GHz) : 0					
SSID	MAC	Band	Authentication	RSSI	Power Saving Mode

DAP-2660

192.168.0.50/index.php

D-Link®

DAP-2660

Home Maintenance Configuration System Logout Help

- DAP-2660
 - Basic Settings
 - Advanced Settings
 - Performance
 - Wireless Resource
 - Multi-SSID
 - VLAN
 - Intrusion
 - Schedule
 - Internal RADIUS Server
 - ARP Spoofing Prevention
 - Bandwidth Optimization
 - AP Array
 - Captive Portal
 - DHCP Server
 - Filters
 - Traffic Control
- Status
 - Device Information
 - Client Information
 - WDS Information
 - Channel Analyze
 - Statistics
 - Log

WDS Information

WDS Information		Channel : 1 (2.412 GHz)			
Name	MAC	Authentication	Signal	Status	
WDS Information		Channel : 149 (5.745 GHz)			
Name	MAC	Authentication	Signal	Status	

DAP-2660

192.168.0.50/index.php?uptime=1387&random=2014.6.11.15.42.35

D-Link®

DAP-2660

Home Maintenance Configuration System Logout Help

- DAP-2660
 - Basic Settings
 - Advanced Settings
 - Status
 - Device Information
 - Client Information
 - WDS Information
 - Channel Analyze
 - Statistics
 - Log

Channel Analyze

Wireless Band: 5GHz

Detect

Wireless Summary

AP List

CH	AP Num	MRssi(%)	ARssi(%)	Evaluation
36	7	45		Normal
40	0			Best
44	3	93		Bad
48	0			Best
149	1	100		Bad
153	0			Best
157	0			Best
161	1	100		Bad
165	0			Best

* There are only three non-overlapped channels in 2.4G band, respectively 1,6 and 11.

192.168.0.50/st_ap.php

DAP-2660

192.168.0.50/index.php?uptime=1387&random=2014.6.11.15.42.35

D-Link DAP-2660

Home Maintenance Configuration System Logout Help

- DAP-2660
 - Basic Settings
 - Advanced Settings
 - Status
 - Device Information
 - Client Information
 - WDS Information
 - Channel Analyze
 - Statistics
 - Ethernet
 - WLAN
 - Log

Ethernet Traffic Statistics

Clear Refresh

Transmitted Count	
Transmitted Packet Count	4687
Transmitted Bytes Count	4890992
Dropped Packet Count	0

Received Count	
Received Packet Count	7916
Received Bytes Count	878056
Dropped Packet Count	0

DAP-2660

192.168.0.50/index.php?uptime=1387&random=2014.6.11.15.42.35

D-Link DAP-2660

Home Maintenance Configuration System Logout Help

- DAP-2660
 - Basic Settings
 - Advanced Settings
 - Status
 - Device Information
 - Client Information
 - WDS Information
 - Channel Analyze
 - Statistics
 - Ethernet
 - WLAN
 - Log

WLAN Traffic Statistics

	2.4GHz	5GHz
Transmitted Count		
Transmitted Packet Count	0	0
Transmitted Bytes Count	0	0
Dropped Packet Count	5720	0
Transmitted Retry Count	0	0
Received Count		
Received Packet Count	0	0
Received Bytes Count	0	0
Dropped Packet Count	0	0
Received CRC Count	0	0
Received Decryption Error Count	0	0
Received MIC Error Count	0	0
Received PHY Error Count	0	0

DAP-2660

192.168.0.50/index.php?uptime=1387&random=2014.6.11.15.42.35

D-Link DAP-2660

Home Maintenance Configuration System Logout Help

- DAP-2660
 - Basic Settings
 - Advanced Settings
 - Status
 - Device Information
 - Client Information
 - WDS Information
 - Channel Analyze
 - Statistics
 - Log
 - View Log
 - Log Settings

View Log

First Page Last Page Previous Next Clear

Page 1 of 1

Time	Priority	Message
Uptime 0 day 00:17:17	[SYSACT]	Web login success from 192.168.0.149
Uptime 0 day 00:14:37	[SYSACT]	Web logout from 192.168.0.149
Uptime 0 day 00:02:31	[Wireless]	5G:Initiate Wireless success
Uptime 0 day 00:02:31	[Wireless]	2.4G:Initiate Wireless success
Uptime 0 day 00:02:22	[Wireless]	5G:Initiate Wireless success
Uptime 0 day 00:02:14	[Wireless]	2.4G:Initiate Wireless success
Uptime 0 day 00:01:43	[SYSACT]	Web login success from 192.168.0.149
Uptime 0 day 00:00:50	[SYSACT]	Web login success from 192.168.0.149
Uptime 0 day 00:00:34	[Wireless]	5G:Initiate Wireless success
Uptime 0 day 00:00:28	[Wireless]	2.4G:Initiate Wireless success
Uptime 0 day 00:00:11	[Notice]	Ethernet ETH0 LINK UP
Uptime 0 day 00:00:06	[SYSACT]	AP cold start

DAP-2660

192.168.0.50/index.php?uptime=1387&random=2014.6.11.15.42.35

D-Link DAP-2660

Home Maintenance Configuration System Logout Help

DAP-2660

- Basic Settings
- Advanced Settings
- Status
 - Device Information
 - Client Information
 - WDS Information
 - Channel Analyze
- Statistics
- Log
 - View Log
 - Log Settings

Log Settings

Log Settings

Log Server / IP Address

Log Type System Activity
 Wireless Activity
 Notice

Email Notification

Email Notification Enable

Outgoing mail server (SMTP)

Authentication Enable

SSL/TLS Enable

From Email Address

To Email Address

Email Server Address

SMTP Port

User Name

Password

Confirm Password

Email Log Schedule

Schedule hours or when Log is full