

# DAP-2695

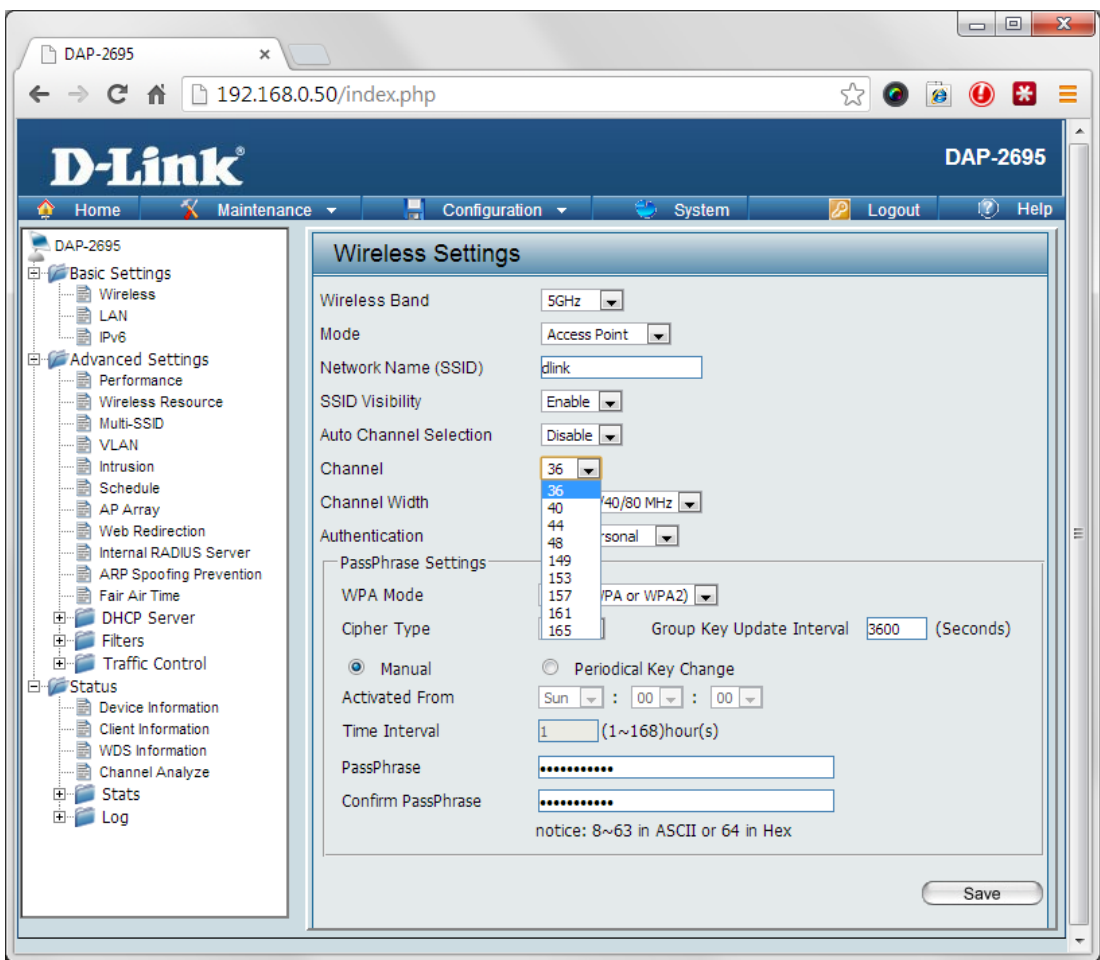
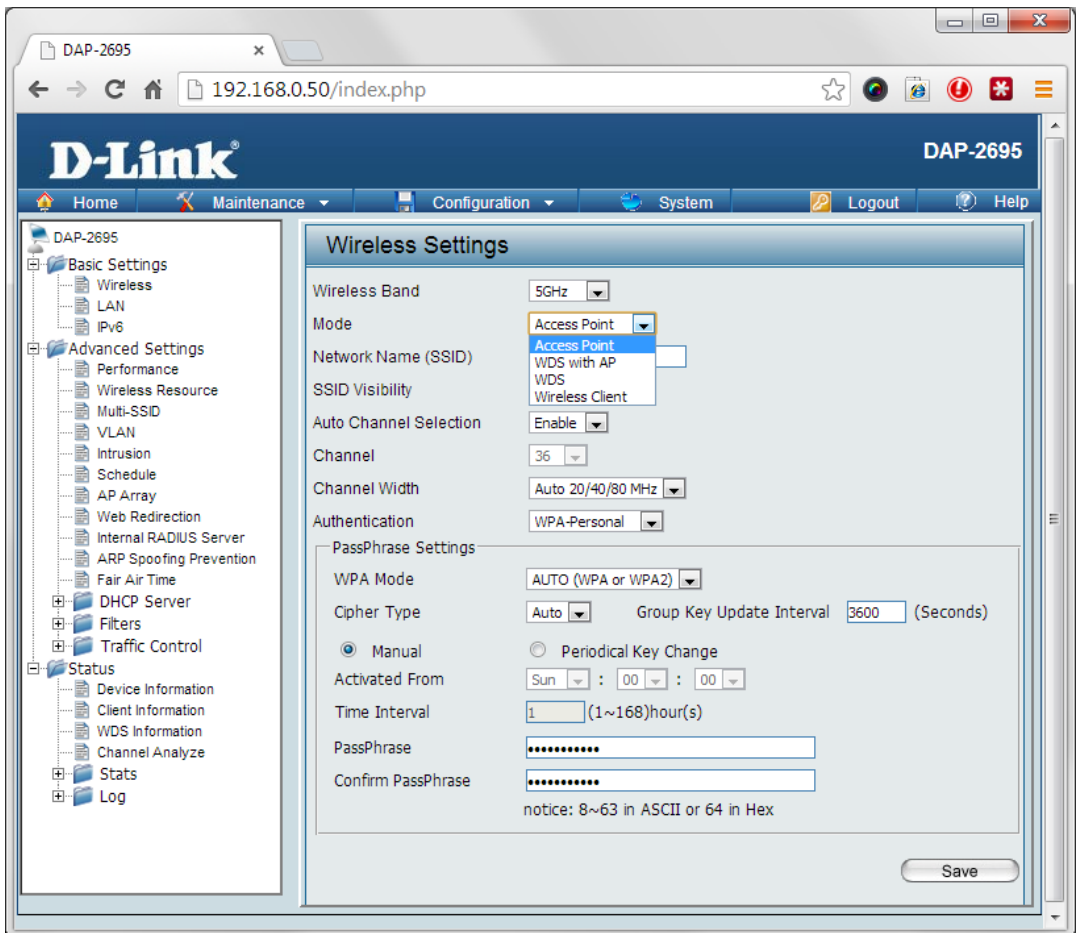
Fw 1.00

192.168.0.50

admin / <blank>

The screenshot displays the web management interface for a D-Link DAP-2695 device. The browser address bar shows the URL 192.168.0.50/index.php. The interface features a navigation menu on the left with categories like Basic Settings, Advanced Settings, and Status. The main content area is titled 'System Information' and contains the following details:

Model Name	DAP-2695
Firmware Version	1.00 18:25:18 09/06/2013
System Name	D-Link DAP-2695
Location	
System Time	01/01/1970 00:06:11
Up Time	0 Days, 00:6:12
Operation Mode(2.4GHz)	Access Point
Operation Mode(5GHz)	Access Point
MAC Address(2.4GHz)	78:54:2e:b0:56:a0
MAC Address(5GHz)	78:54:2e:b0:56:a8
IP Address	192.168.0.50



DAP-2695

192.168.0.50/index.php

# D-Link

DAP-2695

Home Maintenance Configuration System Logout Help

- DAP-2695
  - Basic Settings
    - Wireless
    - LAN
    - IPv6
  - Advanced Settings
    - Performance
    - Wireless Resource
    - Multi-SSID
    - VLAN
    - Intrusion
    - Schedule
    - AP Array
    - Web Redirection
    - Internal RADIUS Server
    - ARP Spoofing Prevention
    - Fair Air Time
    - DHCP Server
    - Filters
    - Traffic Control
  - Status
    - Device Information
    - Client Information
    - WDS Information
    - Channel Analyze
    - Stats
    - Log

## Wireless Settings

Wireless Band: 5GHz

Mode: Access Point

Network Name (SSID): dlink

SSID Visibility: Enable

Auto Channel Selection: Enable

Channel: 36

Channel Width: 20 MHz

Authentication: 20 MHz

PassPhrase Settings

WPA Mode: AUTO (WPA or WPA2)

Cipher Type: Auto Group Key Update Interval: 3600 (Seconds)

Manual  Periodical Key Change

Activated From: Sun : 00 : 00

Time Interval: 1 (1~168)hour(s)

PassPhrase: .....

Confirm PassPhrase: .....

notice: 8~63 in ASCII or 64 in Hex

Save

DAP-2695

192.168.0.50/index.php

# D-Link

DAP-2695

Home Maintenance Configuration System Logout Help

- DAP-2695
  - Basic Settings
    - Wireless
    - LAN
    - IPv6
  - Advanced Settings
    - Performance
    - Wireless Resource
    - Multi-SSID
    - VLAN
    - Intrusion
    - Schedule
    - AP Array
    - Web Redirection
    - Internal RADIUS Server
    - ARP Spoofing Prevention
    - Fair Air Time
    - DHCP Server
    - Filters
    - Traffic Control
  - Status
    - Device Information
    - Client Information
    - WDS Information
    - Channel Analyze
    - Stats
    - Log

## Wireless Settings

Wireless Band: 5GHz

Mode: Access Point

Network Name (SSID): dlink

SSID Visibility: Enable

Auto Channel Selection: Enable

Channel: 36

Channel Width: 20 MHz

Authentication: WPA-Personal

PassPhrase Settings

WPA Mode: WPA-Personal

Cipher Type: 802.1X Group Key Update Interval: 3600 (Seconds)

Manual  Periodical Key Change

Activated From: Sun : 00 : 00

Time Interval: 1 (1~168)hour(s)

PassPhrase: .....

Confirm PassPhrase: .....

notice: 8~63 in ASCII or 64 in Hex

Save

DAP-2695

192.168.0.50/index.php

# D-Link

DAP-2695

Home Maintenance Configuration System Logout Help

- DAP-2695
  - Basic Settings
    - Wireless
    - LAN
    - IPv6
  - Advanced Settings
    - Performance
    - Wireless Resource
    - Multi-SSID
    - VLAN
    - Intrusion
    - Schedule
    - AP Array
    - Web Redirection
    - Internal RADIUS Server
    - ARP Spoofing Prevention
    - Fair Air Time
    - DHCP Server
    - Filters
    - Traffic Control
  - Status
    - Device Information
    - Client Information
    - WDS Information
    - Channel Analyze
    - Stats
    - Log

## Wireless Settings

Wireless Band: 5GHz

Mode: Access Point

Network Name (SSID): dlink

SSID Visibility: Enable

Auto Channel Selection: Enable

Channel: 36

Channel Width: 20 MHz

Authentication: WPA-Personal

PassPhrase Settings

WPA Mode: **AUTO (WPA or WPA2)**

Cipher Type: **AUTO (WPA or WPA2)**

WPA2 Only

WPA Only

Update Interval: 3600 (Seconds)

Manual  Periodical Key Change

Activated From: Sun : 00 : 00

Time Interval: 1 (1~168)hour(s)

PassPhrase: .....

Confirm PassPhrase: .....

notice: 8~63 in ASCII or 64 in Hex

Save

DAP-2695

192.168.0.50/index.php

# D-Link®

DAP-2695

Home Maintenance Configuration System Logout Help

- Basic Settings
  - Wireless
  - LAN
  - IPv6
- Advanced Settings
  - Performance
  - Wireless Resource
  - Multi-SSID
  - VLAN
  - Intrusion
  - Schedule
  - AP Array
  - Web Redirection
  - Internal RADIUS Server
  - ARP Spoofing Prevention
  - Fair Air Time
  - DHCP Server
  - Filters
  - Traffic Control
- Status
  - Device Information
  - Client Information
  - WDS Information
  - Channel Analyze
  - Stats
  - Log

## Wireless Settings

Wireless Band: 5GHz

Mode: Access Point

Network Name (SSID): dlink

SSID Visibility: Enable

Auto Channel Selection: Enable

Channel: 36

Channel Width: 20 MHz

Authentication: WPA-Enterprise

### RADIUS Server Settings

WPA Mode: AUTO (WPA or WPA2)

Cipher Type: Auto (dropdown menu open showing: Auto, AES, TKIP, Disable)

Group Key Update Interval: 3600 (Seconds)

### Network Access Protection

Network Access Protection:  Disable  Enable

### RADIUS Server Mode

RADIUS Server:  External  Internal

### Primary RADIUS Server Setting

RADIUS Server: [ ] RADIUS Port: 1812

RADIUS Secret: [ ]

### Backup RADIUS Server Setting (Optional)

RADIUS Server: [ ] RADIUS Port: 1812

RADIUS Secret: [ ]

### Primary Accounting Server Setting

Accounting Mode: Disable

Accounting Server: [ ] Accounting Port: 1813

Accounting Secret: [ ]

### Backup Accounting Server Setting (Optional)

Accounting Server: [ ] Accounting Port: 1813

Accounting Secret: [ ]

DAP-2695

192.168.0.50/index.php

# D-Link®

DAP-2695

Home Maintenance Configuration System Logout Help

- DAP-2695
  - Basic Settings
    - Wireless
    - LAN
    - IPv6
  - Advanced Settings
    - Performance
    - Wireless Resource
    - Multi-SSID
    - VLAN
    - Intrusion
    - Schedule
    - AP Array
    - Web Redirection
    - Internal RADIUS Server
    - ARP Spoofing Prevention
    - Fair Air Time
    - DHCP Server
    - Filters
    - Traffic Control
  - Status
    - Device Information
    - Client Information
    - WDS Information
    - Channel Analyze
    - Stats
    - Log

## Wireless Settings

Wireless Band: 2.4GHz

Mode: Access Point

Network Name (SSID): dlink

SSID Visibility: Enable

Auto Channel Selection: Enable

Channel: 6

Channel Width: 20 MHz

Authentication: 20 MHz

PassPhrase Settings

WPA Mode: AUTO (WPA or WPA2)

Cipher Type: Auto Group Key Update Interval: 3600 (Seconds)

Manual  Periodical Key Change

Activated From: Sun : 00 : 00

Time Interval: 1 (1~168)hour(s)

PassPhrase: .....

Confirm PassPhrase: .....

notice: 8~63 in ASCII or 64 in Hex

Save

DAP-2695

192.168.0.50/index.php

# D-Link®

DAP-2695

Home Maintenance Configuration System Logout Help

- DAP-2695
  - Basic Settings
    - Wireless
    - LAN
    - IPv6
  - Advanced Settings
    - Performance
    - Wireless Resource
    - Multi-SSID
    - VLAN
    - Intrusion
    - Schedule
    - AP Array
    - Web Redirection
    - Internal RADIUS Server
    - ARP Spoofing Prevention
    - Fair Air Time
    - DHCP Server
    - Filters
    - Traffic Control
  - Status
    - Device Information
    - Client Information
    - WDS Information
    - Channel Analyze
    - Stats
    - Log

## LAN Settings

Get IP From: Static IP (Manual)

IP Address: 192.168.0.50

Subnet Mask: 255.255.255.0

Default Gateway:

DNS:

Save

DAP-2695

192.168.0.50/index.php

**D-Link** DAP-2695

Home Maintenance Configuration System Logout Help

DAP-2695

- Basic Settings
  - Wireless
  - LAN
  - IPv6
- Advanced Settings
  - Performance
  - Wireless Resource
  - Multi-SSID
  - VLAN
  - Intrusion
  - Schedule
  - AP Array
  - Web Redirection
  - Internal RADIUS Server
  - ARP Spoofing Prevention
  - Fair Air Time
  - DHCP Server
  - Filters
  - Traffic Control
- Status
  - Device Information
  - Client Information
  - WDS Information
  - Channel Analyze
  - Stats
  - Log

### IPv6 Settings

Enable IPv6

Get IP From:

IP Address:

Prefix:

Default Gateway:

Save

DAP-2695

192.168.0.50/index.php

**D-Link** DAP-2695

Home Maintenance Configuration System Logout Help

DAP-2695

- Basic Settings
  - Wireless
  - LAN
  - IPv6
- Advanced Settings
  - Performance
  - Wireless Resource
  - Multi-SSID
  - VLAN
  - Intrusion
  - Schedule
  - AP Array
  - Web Redirection
  - Internal RADIUS Server
  - ARP Spoofing Prevention
  - Fair Air Time
  - DHCP Server
  - Filters
  - Traffic Control
- Status
  - Device Information
  - Client Information
  - WDS Information
  - Channel Analyze
  - Stats
  - Log

### Performance Settings

Wireless band:

Wireless:

Wireless Mode: 

- Mixed 802.11ac
- Mixed 802.11n, 802.11a
- 802.11a Only
- 802.11n Only
- Mixed 802.11ac

Data Rate:

Beacon Interval (40-500):

DTIM Interval (1-15):

Transmit Power:

WMM (Wi-Fi Multimedia):

Ack Time Out (5GHz, 25~200):  (μs)

Short GI:

IGMP Snooping:

Multicast Rate:  (Mbps)

Multicast Bandwidth Control: 

- Maximum Multicast Bandwidth:  kbps

HT20/40 Coexistence:

Save

DAP-2695

192.168.0.50/index.php

# D-Link®

DAP-2695

Home Maintenance Configuration System Logout Help

- DAP-2695
  - Basic Settings
  - Advanced Settings
    - Performance
    - Wireless Resource
    - Multi-SSID
    - VLAN
    - Intrusion
    - Schedule
    - AP Array
    - Web Redirection
    - Internal RADIUS Server
    - ARP Spoofing Prevention
    - Fair Air Time
    - DHCP Server
    - Filters
    - Traffic Control
  - Status

## Performance Settings

Wireless band: 5GHz

Wireless: On

Wireless Mode: Mixed 802.11ac

Data Rate: Best(Up to 1300) (Mbps)

Beacon Interval (40-500): 100

DTIM Interval (1-15): 1

Transmit Power: 100%

WMM (Wi-Fi Multimedia): 100%

Ack Time Out (5GHz, 25~200): (μs)

Short GI: Enable

IGMP Snooping: Disable

Multicast Rate: Disable (Mbps)

Multicast Bandwidth Control: Disable

Maximum Multicast Bandwidth: 100 kbps

HT20/40 Coexistence: Disable

Save

DAP-2695

192.168.0.50/index.php

# D-Link®

DAP-2695

Home Maintenance Configuration System Logout Help

- DAP-2695
  - Basic Settings
  - Advanced Settings
    - Performance
    - Wireless Resource
    - Multi-SSID
    - VLAN
    - Intrusion
    - Schedule
    - AP Array
    - Web Redirection
    - Internal RADIUS Server
    - ARP Spoofing Prevention
    - Fair Air Time
    - DHCP Server
    - Filters
    - Traffic Control
  - Status

## Performance Settings

Wireless band: 2.4GHz

Wireless: On

Wireless Mode: Mixed 802.11n, 802.11g and 802.11b

Data Rate: Mixed 802.11n, 802.11g and 802.11b

Beacon Interval (40-500): 100

DTIM Interval (1-15): 1

Transmit Power: 100%

WMM (Wi-Fi Multimedia): Enable

Ack Time Out (2.4GHz, 48~200): 48 (μs)

Short GI: Enable

IGMP Snooping: Disable

Multicast Rate: Disable (Mbps)

Multicast Bandwidth Control: Disable

Maximum Multicast Bandwidth: 100 kbps

HT20/40 Coexistence: Enable

Save



DAP-2695

192.168.0.50/index.php

# D-Link

DAP-2695

Home Maintenance Configuration System Logout Help

- DAP-2695
  - Basic Settings
  - Advanced Settings
    - Performance
    - Wireless Resource
    - Multi-SSID
    - VLAN
    - Intrusion
    - Schedule
    - AP Array
    - Web Redirection
    - Internal RADIUS Server
    - ARP Spoofing Prevention
    - Fair Air Time
    - DHCP Server
    - Filters
    - Traffic Control
  - Status

## Wireless Resource Control

Wireless band: 5GHz

5G Preferred: Disable

5G Preferred Age: 180 (s)

5G Preferred Diff: 2

5G Preferred Refuse Num: 3

5G Preferred RSSI: 40%

Connection Limit: Disable

User Limit (0 - 64): 20

11n Preferred: Disable

Network Utilization: 100%

Aging out: Disable

RSSI Threshold: 100%

Data Rate Threshold: 54

ACL RSSI: Disable

ACL RSSI Threshold: 100%

Save

DAP-2695

192.168.0.50/index.php

# D-Link

DAP-2695

Home Maintenance Configuration System Logout Help

- DAP-2695
  - Basic Settings
  - Advanced Settings
    - Performance
    - Wireless Resource
    - Multi-SSID
    - VLAN
    - Intrusion
    - Schedule
    - AP Array
    - Web Redirection
    - Internal RADIUS Server
    - ARP Spoofing Prevention
    - Fair Air Time
    - DHCP Server
    - Filters
    - Traffic Control
  - Status

## Wireless Resource Control

Wireless band: 2.4GHz

5G Preferred: Disable

5G Preferred Age: 180 (s)

5G Preferred Diff: 2

5G Preferred Refuse Num: 3

5G Preferred RSSI: 40%

Connection Limit: Disable

User Limit (0 - 64): 20

11n Preferred: Disable

Network Utilization: 100%

Aging out: Disable

RSSI Threshold: 100%

Data Rate Threshold: 54

ACL RSSI: Disable

ACL RSSI Threshold: 100%

Save

DAP-2695

192.168.0.50/index.php

**D-Link** DAP-2695

Home Maintenance Configuration System Logout Help

DAP-2695

- Basic Settings
- Advanced Settings
  - Performance
  - Wireless Resource
  - Multi-SSID
  - VLAN
  - Intrusion
  - Schedule
  - AP Array
  - Web Redirection
  - Internal RADIUS Server
  - ARP Spoofing Prevention
  - Fair Air Time
  - DHCP Server
  - Filters
  - Traffic Control
- Status

### Multi-SSID Settings

Enable Multi-SSID  Enable Priority

Wireless Settings

Band: 5 GHz

Index: Primary SSID

SSID: dlink

SSID Visibility: Enable

Security: WPA-Personal

Priority: 0

WMM (Wi-Fi Multimedia): Enable

Add

Index	SSID	Band	Encryption	Delete
Primary SSID	dlink	5 GHz	WPA2-Auto-Personal	

Save

DAP-2695

192.168.0.50/index.php

**D-Link** DAP-2695

Home Maintenance Configuration System Logout Help

DAP-2695

- Basic Settings
- Advanced Settings
  - Performance
  - Wireless Resource
  - Multi-SSID
  - VLAN
  - Intrusion
  - Schedule
  - AP Array
  - Web Redirection
  - Internal RADIUS Server
  - ARP Spoofing Prevention
  - Fair Air Time
  - DHCP Server
  - Filters
  - Traffic Control
- Status

### Multi-SSID Settings

Enable Multi-SSID  Enable Priority

Wireless Settings

Band: 5 GHz

Index: Primary SSID

SSID: dlink

SSID Visibility: Enable

Security: WPA-Personal

Priority: 0

WMM (Wi-Fi Multimedia): Enable

PassPhrase Settings

WPA Mode: AUTO (WPA or WPA2)

Cipher Type: Auto Group Key Update Interval: 3600 Seconds

Manual  Periodical Key Change

Activated From: Sun : 00 : 00

Time Interval: 1 (1~168)hour(s)

PassPhrase: .....

Confirm PassPhrase: .....

notice: 8~63 in ASCII or 64 in Hex

Add

Index	SSID	Band	Encryption	Delete
Primary SSID	dlink	5 GHz	WPA2-Auto-Personal	

DAP-2695

192.168.0.50/index.php

**D-Link** DAP-2695

Home Maintenance Configuration System Logout Help

DAP-2695

- Basic Settings
- Advanced Settings
  - Performance
  - Wireless Resource
  - Multi-SSID
  - VLAN
  - Intrusion
  - Schedule
  - AP Array
  - Web Redirection
  - Internal RADIUS Server
  - ARP Spoofing Prevention
  - Fair Air Time
  - DHCP Server
  - Filters
  - Traffic Control
- Status

### VLAN Settings

VLAN Status :  Disable  Enable Save

VLAN Mode : Static(2.4G), Static(5G)

VLAN List	Port List	Add/Edit VLAN	PVID Setting
VID	VLAN Name	Untag VLAN Ports	Tag VLAN Ports
1	default	Mgmt, LAN1, LAN2, Primary(2.4G), S-1(2.4G), S-2(2.4G), S-3(2.4G), S-4(2.4G), S-5(2.4G), S-6(2.4G), S-7(2.4G), W-1(2.4G), W-2(2.4G), W-3(2.4G), W-4(2.4G), W-5(2.4G), W-6(2.4G), W-7(2.4G), W-8(2.4G), Primary(5G), S-1(5G), S-2(5G), S-3(5G), S-4(5G), S-5(5G), S-6(5G), S-7(5G), W-1(5G), W-2(5G), W-3(5G), W-4(5G), W-5(5G), W-6(5G), W-7(5G), W-8(5G)	

DAP-2695

192.168.0.50/index.php

**D-Link** DAP-2695

Home Maintenance Configuration System Logout Help

DAP-2695

- Basic Settings
- Advanced Settings
  - Performance
  - Wireless Resource
  - Multi-SSID
  - VLAN
  - Intrusion
  - Schedule
  - AP Array
  - Web Redirection
  - Internal RADIUS Server
  - ARP Spoofing Prevention
  - Fair Air Time
  - DHCP Server
  - Filters
  - Traffic Control
- Status

### VLAN Settings

VLAN Status :  Disable  Enable Save

VLAN Mode : Static(2.4G), Static(5G)

VLAN List	Port List	Add/Edit VLAN	PVID Setting
Port Name	Tag VID	Untag VID	PVID
Mgmt		1	1
LAN1		1	1
LAN2		1	1
Primary(2.4G)		1	1
Primary(5G)		1	1
S-1(2.4G)		1	1
S-2(2.4G)		1	1
S-3(2.4G)		1	1
S-4(2.4G)		1	1
S-5(2.4G)		1	1
S-6(2.4G)		1	1
S-7(2.4G)		1	1
W-1(2.4G)		1	1
W-2(2.4G)		1	1
W-3(2.4G)		1	1
W-4(2.4G)		1	1

DAP-2695

192.168.0.50/index.php

**D-Link** DAP-2695

Home Maintenance Configuration System Logout Help

DAP-2695

- Basic Settings
- Advanced Settings
  - Performance
  - Wireless Resource
  - Multi-SSID
  - VLAN
  - Intrusion
  - Schedule
  - AP Array
  - Web Redirection
  - Internal RADIUS Server
  - ARP Spoofing Prevention
  - Fair Air Time
  - DHCP Server
  - Filters
  - Traffic Control
- Status

### VLAN Settings

VLAN Status :  Disable  Enable Save

VLAN Mode : Static(2.4G), Static(5G)

VLAN List Port List **Add/Edit VLAN** PVID Setting

VLAN ID (VID)  VLAN Name

Port	Select All	Mgmt	LAN1	LAN2
Untag	<input type="button" value="All"/>	<input type="radio"/>	<input type="radio"/>	<input type="radio"/>
Tag	<input type="button" value="All"/>	<input type="radio"/>	<input type="radio"/>	<input type="radio"/>
Not Member	<input type="button" value="All"/>	<input type="radio"/>	<input type="radio"/>	<input type="radio"/>

2.4GHz

MSSID Port	Select All	Primary	S-1	S-2	S-3	S-4	S-5	S-6	S-7
Untag	<input type="button" value="All"/>	<input type="radio"/>	<input type="radio"/>	<input type="radio"/>	<input type="radio"/>	<input type="radio"/>	<input type="radio"/>	<input type="radio"/>	<input type="radio"/>
Tag	<input type="button" value="All"/>	<input type="radio"/>	<input type="radio"/>	<input type="radio"/>	<input type="radio"/>	<input type="radio"/>	<input type="radio"/>	<input type="radio"/>	<input type="radio"/>
Not Member	<input type="button" value="All"/>	<input type="radio"/>	<input type="radio"/>	<input type="radio"/>	<input type="radio"/>	<input type="radio"/>	<input type="radio"/>	<input type="radio"/>	<input type="radio"/>

WDS Port	Select All	W-1	W-2	W-3	W-4	W-5	W-6	W-7	W-8
Untag	<input type="button" value="All"/>	<input type="radio"/>	<input type="radio"/>	<input type="radio"/>	<input type="radio"/>	<input type="radio"/>	<input type="radio"/>	<input type="radio"/>	<input type="radio"/>
Tag	<input type="button" value="All"/>	<input type="radio"/>	<input type="radio"/>	<input type="radio"/>	<input type="radio"/>	<input type="radio"/>	<input type="radio"/>	<input type="radio"/>	<input type="radio"/>
Not Member	<input type="button" value="All"/>	<input type="radio"/>	<input type="radio"/>	<input type="radio"/>	<input type="radio"/>	<input type="radio"/>	<input type="radio"/>	<input type="radio"/>	<input type="radio"/>

5GHz

MSSID Port	Select All	Primary	S-1	S-2	S-3	S-4	S-5	S-6	S-7
Untag	<input type="button" value="All"/>	<input type="radio"/>	<input type="radio"/>	<input type="radio"/>	<input type="radio"/>	<input type="radio"/>	<input type="radio"/>	<input type="radio"/>	<input type="radio"/>
Tag	<input type="button" value="All"/>	<input type="radio"/>	<input type="radio"/>	<input type="radio"/>	<input type="radio"/>	<input type="radio"/>	<input type="radio"/>	<input type="radio"/>	<input type="radio"/>
Not Member	<input type="button" value="All"/>	<input type="radio"/>	<input type="radio"/>	<input type="radio"/>	<input type="radio"/>	<input type="radio"/>	<input type="radio"/>	<input type="radio"/>	<input type="radio"/>

WDS Port	Select All	W-1	W-2	W-3	W-4	W-5	W-6	W-7	W-8
Untag	<input type="button" value="All"/>	<input type="radio"/>	<input type="radio"/>	<input type="radio"/>	<input type="radio"/>	<input type="radio"/>	<input type="radio"/>	<input type="radio"/>	<input type="radio"/>
Tag	<input type="button" value="All"/>	<input type="radio"/>	<input type="radio"/>	<input type="radio"/>	<input type="radio"/>	<input type="radio"/>	<input type="radio"/>	<input type="radio"/>	<input type="radio"/>
Not Member	<input type="button" value="All"/>	<input type="radio"/>	<input type="radio"/>	<input type="radio"/>	<input type="radio"/>	<input type="radio"/>	<input type="radio"/>	<input type="radio"/>	<input type="radio"/>

Save

DAP-2695

192.168.0.50/index.php

# D-Link

DAP-2695

Home Maintenance Configuration System Logout Help

- DAP-2695
  - Basic Settings
  - Advanced Settings
    - Performance
    - Wireless Resource
    - Multi-SSID
    - VLAN
    - Intrusion
    - Schedule
    - AP Array
    - Web Redirection
    - Internal RADIUS Server
    - ARP Spoofing Prevention
    - Fair Air Time
    - DHCP Server
    - Filters
    - Traffic Control
  - Status

## VLAN Settings

VLAN Status :  Disable  Enable Save

VLAN Mode : Static(2.4G), Static(5G)

VLAN List | Port List | Add/Edit VLAN | **PVID Setting**

PVID Auto Assign Status  Disable  Enable

Port	Mgmt	LAN1	LAN2
PVID	1	1	1

2.4GHz

MSSID Port	Primary	S-1	S-2	S-3	S-4	S-5	S-6	S-7
PVID	1	1	1	1	1	1	1	1
WDS Port	W-1	W-2	W-3	W-4	W-5	W-6	W-7	W-8
PVID	1	1	1	1	1	1	1	1

5GHz

MSSID Port	Primary	S-1	S-2	S-3	S-4	S-5	S-6	S-7
PVID	1	1	1	1	1	1	1	1
WDS Port	W-1	W-2	W-3	W-4	W-5	W-6	W-7	W-8
PVID	1	1	1	1	1	1	1	1

Save

DAP-2695

192.168.0.50/index.php

# D-Link

DAP-2695

Home Maintenance Configuration System Logout Help

- DAP-2695
  - Basic Settings
  - Advanced Settings
    - Performance
    - Wireless Resource
    - Multi-SSID
    - VLAN
    - Intrusion
    - Schedule
    - AP Array
    - Web Redirection
    - Internal RADIUS Server
    - ARP Spoofing Prevention
    - Fair Air Time
    - DHCP Server
    - Filters
    - Traffic Control
  - Status

## Wireless Intrusion Protection

Wireless Band 5GHz

Detect

AP List

All	Band	CH	SSID	BSSID	Last Seen	Status
All						
Valid						
Neighbor						
Rogue						
New						

Set as Valid Set as Neighborhood Set as Rogue Set as New

Mark All New Access Points as Valid Access Points  
 Mark All New Access Points as Rogue Access Points

Save

DAP-2695

192.168.0.50/index.php

# D-Link®

DAP-2695

Home Maintenance Configuration System Logout Help

- DAP-2695
  - Basic Settings
  - Advanced Settings
    - Performance
    - Wireless Resource
    - Multi-SSID
    - VLAN
    - Intrusion
    - Schedule
    - AP Array
    - Web Redirection
    - Internal RADIUS Server
    - ARP Spoofing Prevention
    - Fair Air Time
    - DHCP Server
    - Filters
    - Traffic Control
  - Status

## Wireless Schedule Settings

Wireless Schedule:

### Add Schedule Rule

Name:

Index:

SSID:

Day(s):  All Week  Select Day(s)

Sun  Mon  Tue  Wed  Thu  Fri  Sat

All Day(s):

Start Time:  :  (hour:minute, 24 hour time)

End Time:  :  (hour:minute, 24 hour time)  Overnight

### Schedule Rule List

Name	SSID Index	SSID	Day(s)	Time Frame	Wireless Edit	DEL

DAP-2695

192.168.0.50/index.php

# D-Link®

DAP-2695

Home Maintenance Configuration System Logout Help

- DAP-2695
  - Basic Settings
  - Advanced Settings
    - Performance
    - Wireless Resource
    - Multi-SSID
    - VLAN
    - Intrusion
    - Schedule
    - AP Array
    - Web Redirection
    - Internal RADIUS Server
    - ARP Spoofing Prevention
    - Fair Air Time
    - DHCP Server
    - Filters
    - Traffic Control
  - Status

## AP Array

Enable AP Array Version:2.0

Master  Backup Master  Slave

AP Array Name:

AP Array Password:

Scan AP Array List:

Connection Status:

### AP Array List

Array Name	Master IP	MAC	Master	Backup Master	Slave	Total

### Current Members

Index	Role	IP Address	MAC Address	Location

DAP-2695

192.168.0.50/index.php

**D-Link** DAP-2695

Home Maintenance Configuration System Logout Help

- DAP-2695
  - Basic Settings
  - Advanced Settings
    - Performance
    - Wireless Resource
    - Multi-SSID
    - VLAN
    - Intrusion
    - Schedule
    - AP Array
    - Web Redirection
    - Internal RADIUS Server
    - ARP Spoofing Prevention
    - Fair Air Time
    - DHCP Server
    - Filters
    - Traffic Control
  - Status

### Web Redirection

Enable Web Redirection  
Web Site:

Enable Web Authentication

#### Add Web Redirection Account

User Name:   
Password:   
Status:

#### Web Redirection Account List

User Name	Enable	Disable	Delete

DAP-2695

192.168.0.50/index.php

**D-Link** DAP-2695

Home Maintenance Configuration System Logout Help

- DAP-2695
  - Basic Settings
  - Advanced Settings
    - Performance
    - Wireless Resource
    - Multi-SSID
    - VLAN
    - Intrusion
    - Schedule
    - AP Array
    - Web Redirection
    - Internal RADIUS Server
    - ARP Spoofing Prevention
    - Fair Air Time
    - DHCP Server
    - Filters
    - Traffic Control
  - Status

### Internal RADIUS Server

#### Add RADIUS Account

User Name:   
Password:   
Status:

#### RADIUS Account list

User Name	Enable	Disable	Delete

Save

DAP-2695

192.168.0.50/index.php

**D-Link** DAP-2695

Home Maintenance Configuration System Logout Help

DAP-2695

- Basic Settings
- Advanced Settings
  - Performance
  - Wireless Resource
  - Multi-SSID
  - VLAN
  - Intrusion
  - Schedule
  - AP Array
  - Web Redirection
  - Internal RADIUS Server
  - ARP Spoofing Prevention
  - Fair Air Time
- DHCP Server
- Filters
- Traffic Control
- Status

### ARP Spoofing Prevention Settings

ARP Spoofing Prevention

#### Add Gateway Address

Gateway IP Address

Gateway MAC Address

#### Gateway Address List

Total Entries: 0

Gateway IP Address	Gateway MAC Address	Edit	Delete
Save			

DAP-2695

192.168.0.50/index.php

**D-Link** DAP-2695

Home Maintenance Configuration System Logout Help

DAP-2695

- Basic Settings
- Advanced Settings
  - Performance
  - Wireless Resource
  - Multi-SSID
  - VLAN
  - Intrusion
  - Schedule
  - AP Array
  - Web Redirection
  - Internal RADIUS Server
  - ARP Spoofing Prevention
  - Fair Air Time
- DHCP Server
- Filters
- Traffic Control
- Status

### Fair Air Time

Enable Fair Air Time

Downlink Bandwidth  Mbits/sec

Uplink Bandwidth  Mbits/sec

#### Add Fair Air Time Rule

Rule Type

Band

SSID

Downlink Speed  Kbits/sec

Uplink Speed  Kbits/sec

#### Fair Air Time Rules

Band	Type	SSID	Downlink Speed	Uplink Speed	Edit	Del
Save						



DAP-2695

192.168.0.50/index.php

**D-Link** DAP-2695

Home Maintenance Configuration System Logout Help

DAP-2695

- Basic Settings
- Advanced Settings
  - Performance
  - Wireless Resource
  - Multi-SSID
  - VLAN
  - Intrusion
  - Schedule
  - AP Array
  - Web Redirection
  - Internal RADIUS Server
  - ARP Spoofing Prevention
  - Fair Air Time
  - DHCP Server
    - Dynamic Pool Settings
    - Static Pool Settings
    - Current IP Mapping List
- Filters
- Traffic Control
- Status

### Dynamic Pool Settings

**DHCP Server Control**

Function Enable/Disable:

**Dynamic Pool Settings**

IP Assigned From:

The Range of Pool (1-254):

Subnet Mask:

Gateway:

WINS:

DNS:

Domain Name:

Lease Time (60 - 31536000 sec):

DAP-2695

192.168.0.50/index.php

**D-Link** DAP-2695

Home Maintenance Configuration System Logout Help

DAP-2695

- Basic Settings
- Advanced Settings
  - Performance
  - Wireless Resource
  - Multi-SSID
  - VLAN
  - Intrusion
  - Schedule
  - AP Array
  - Web Redirection
  - Internal RADIUS Server
  - ARP Spoofing Prevention
  - Fair Air Time
  - DHCP Server
    - Dynamic Pool Settings
    - Static Pool Settings
    - Current IP Mapping List
- Filters
- Traffic Control
- Status

### Static Pool Settings

**DHCP Server Control**

Function Enable/Disable:

**Static Pool Setting**

Host Name:

Assigned IP:

Assigned MAC Address:

Subnet Mask:

Gateway:

WINS:

DNS:

Domain Name:

Host Name	MAC Address	IP Address	Edit	Delete

DAP-2695

192.168.0.50/index.php

**D-Link** DAP-2695

Home Maintenance Configuration System Logout Help

- DAP-2695
  - Basic Settings
  - Advanced Settings
    - Performance
    - Wireless Resource
    - Multi-SSID
    - VLAN
    - Intrusion
    - Schedule
    - AP Array
    - Web Redirection
    - Internal RADIUS Server
    - ARP Spoofing Prevention
    - Fair Air Time
    - DHCP Server
      - Dynamic Pool Settings
      - Static Pool Settings
      - Current IP Mapping List
    - Filters
    - Traffic Control
  - Status

### Current IP Mapping List

**Current DHCP Dynamic Pools**

Host Name	Binding MAC Address	Assigned IP Address	Lease Time

**Current DHCP Static Pools**

Host Name	Binding MAC Address	Assigned IP Address

DAP-2695

192.168.0.50/index.php

**D-Link** DAP-2695

Home Maintenance Configuration System Logout Help

- DAP-2695
  - Basic Settings
  - Advanced Settings
    - Performance
    - Wireless Resource
    - Multi-SSID
    - VLAN
    - Intrusion
    - Schedule
    - AP Array
    - Web Redirection
    - Internal RADIUS Server
    - ARP Spoofing Prevention
    - Fair Air Time
    - DHCP Server
    - Filters
      - Wireless MAC ACL
      - WLAN Partition
    - Traffic Control
  - Status

### Wireless MAC ACL Settings

Wireless Band: 5GHz

Access Control List: Disable

MAC Address:  :  :  :  :  :

ID	MAC Address	Delete

**Current Client Information**

MAC Address	SSID	Band	Authentication	Signal	Add

DAP-2695

192.168.0.50/index.php

**D-Link** DAP-2695

Home Maintenance Configuration System Logout Help

DAP-2695

- Basic Settings
- Advanced Settings
  - Performance
  - Wireless Resource
  - Multi-SSID
  - VLAN
  - Intrusion
  - Schedule
  - AP Array
  - Web Redirection
  - Internal RADIUS Server
  - ARP Spoofing Prevention
  - Fair Air Time
  - DHCP Server
  - Filters
    - Wireless MAC ACL
    - WLAN Partition
  - Traffic Control
- Status

### WLAN Partition

Wireless Band: 5GHz

Link Integrity: Disable

Ethernet to WLAN Access: Enable

Internal Station Connection

Primary SSID	<input checked="" type="radio"/> Enable	<input type="radio"/> Disable	<input type="radio"/> Guest mode
Multi-SSID 1	<input type="radio"/> Enable	<input type="radio"/> Disable	<input type="radio"/> Guest mode
Multi-SSID 2	<input type="radio"/> Enable	<input type="radio"/> Disable	<input type="radio"/> Guest mode
Multi-SSID 3	<input type="radio"/> Enable	<input type="radio"/> Disable	<input type="radio"/> Guest mode
Multi-SSID 4	<input type="radio"/> Enable	<input type="radio"/> Disable	<input type="radio"/> Guest mode
Multi-SSID 5	<input type="radio"/> Enable	<input type="radio"/> Disable	<input type="radio"/> Guest mode
Multi-SSID 6	<input type="radio"/> Enable	<input type="radio"/> Disable	<input type="radio"/> Guest mode
Multi-SSID 7	<input type="radio"/> Enable	<input type="radio"/> Disable	<input type="radio"/> Guest mode

Save

DAP-2695

192.168.0.50/index.php

**D-Link** DAP-2695

Home Maintenance Configuration System Logout Help

DAP-2695

- Basic Settings
- Advanced Settings
  - Performance
  - Wireless Resource
  - Multi-SSID
  - VLAN
  - Intrusion
  - Schedule
  - AP Array
  - Web Redirection
  - Internal RADIUS Server
  - ARP Spoofing Prevention
  - Fair Air Time
  - DHCP Server
  - Filters
  - Traffic Control
    - Uplink/Downlink Settings
    - QoS
    - Traffic Manager
- Status

### Uplink and Downlink Setting

LAN1:  Downlink  Uplink

LAN2:  Downlink  Uplink

	2.4GHz	5GHz
Downlink Interface		
<input type="checkbox"/> Primary-ssid	<input type="checkbox"/> Multi-ssid1	<input type="checkbox"/> Multi-ssid2
<input type="checkbox"/> Multi-ssid4	<input type="checkbox"/> Multi-ssid5	<input type="checkbox"/> Multi-ssid7
<input type="checkbox"/> WDS1	<input type="checkbox"/> WDS2	<input type="checkbox"/> WDS3
<input type="checkbox"/> WDS5	<input type="checkbox"/> WDS6	<input type="checkbox"/> WDS8
Uplink Interface		
<input type="checkbox"/> Primary-ssid	<input type="checkbox"/> Multi-ssid1	<input type="checkbox"/> Multi-ssid2
<input type="checkbox"/> Multi-ssid4	<input type="checkbox"/> Multi-ssid5	<input type="checkbox"/> Multi-ssid7
<input type="checkbox"/> WDS1	<input type="checkbox"/> WDS2	<input type="checkbox"/> WDS3
<input type="checkbox"/> WDS5	<input type="checkbox"/> WDS6	<input type="checkbox"/> WDS8

Downlink Bandwidth(1~300):  Mbts/sec

Uplink Bandwidth(1~300):  Mbts/sec

Save



DAP-2695

192.168.0.50/index.php

**D-Link** DAP-2695

Home Maintenance Configuration System Logout Help

DAP-2695

- Basic Settings
- Advanced Settings
- Status
  - Device Information
  - Client Information
  - WDS Information
  - Channel Analyze
  - Stats
  - Log

### Device Information

**Firmware Version:1.00**

Ethernet MAC Address: 78:54:2e:b0:56:a0

Wireless MAC Address(2.4GHz): Primary: 78:54:2e:b0:56:a0  
 SSID 1~7: 78:54:2e:b0:56:a1 ~ 78:54:2e:b0:56:a7

Wireless MAC Address(5GHz): Primary: 78:54:2e:b0:56:a8  
 SSID 1~7: 78:54:2e:b0:56:a9 ~ 78:54:2e:b0:56:af

**Ethernet**

IP Address: 192.168.0.50  
 Subnet Mask: 255.255.255.0  
 Gateway: N/A

**Wireless (2.4GHz)**

Network Name (SSID): dlink  
 Channel: 11  
 Data Rate: Auto  
 Security: WPA2-Auto-Personal / Auto

**Wireless (5GHz)**

Network Name (SSID): dlink  
 Channel: 149  
 Data Rate: Auto  
 Security: WPA2-Auto-Personal / Auto

**AP Array**

AP Array: d-link  
 Role: Slave  
 Location:

**Device Status**

CPU Utilization: 0%  
 Memory Utilization: 11%

DAP-2695

192.168.0.50/index.php

**D-Link** DAP-2695

Home Maintenance Configuration System Logout Help

DAP-2695

- Basic Settings
- Advanced Settings
- Status
  - Device Information
  - Client Information
  - WDS Information
  - Channel Analyze
  - Stats
  - Log

### Client Information

**Client Information** Station association (2.4GHz) : 0

SSID	MAC	Band	Authentication	RSSI	Power Saving Mode

**Client Information** Station association(5GHz) : 0

SSID	MAC	Band	Authentication	RSSI	Power Saving Mode

DAP-2695

192.168.0.50/index.php

**D-Link** DAP-2695

Home Maintenance Configuration System Logout Help

DAP-2695

- Basic Settings
- Advanced Settings
- Status
  - Device Information
  - Client Information
  - WDS Information
  - Channel Analyze
  - Stats
  - Log

### WDS Information

WDS Information Channel : 11 (2.462 GHz)

Name	MAC	Authentication	Signal	Status
WDS Information				
WDS Information				

WDS Information Channel : 149 (5.745 GHz)

Name	MAC	Authentication	Signal	Status
WDS Information				
WDS Information				

DAP-2695

192.168.0.50/index.php?uptime=1300&random=2013.10.30.10.44

**D-Link** DAP-2695

Home Maintenance Configuration System Logout Help

DAP-2695

- Basic Settings
- Advanced Settings
- Status
  - Device Information
  - Client Information
  - WDS Information
  - Channel Analyze
  - Stats
  - Log

### Channel Analyze

Wireless Band

Wireless Summary

AP List

CH	AP Num	MRssi(%)	ARssi(%)	Evaluation
1	4	36	62	Best
2	1	32	62	Best
3	1	96	62	Best
4	6	100	92	Bad
5	0		92	Bad
6	3	100	92	Bad
7	0		92	Bad
8	1	100	42	Normal
9	0		42	Normal
10	0		42	Normal
11	4	100	42	Normal
12	2	67	42	Normal
13	1	73	42	Normal

\* There are only three non-overlapped channels in 2.4G band, respectively 1,6 and 11.

DAP-2695

192.168.0.50/index.php?uptime=1300&random=2013.10.30.10.44

**D-Link** DAP-2695

Home Maintenance Configuration System Logout Help

DAP-2695

- Basic Settings
- Advanced Settings
- Status
  - Device Information
  - Client Information
  - WDS Information
  - Channel Analyze
  - Stats
    - Ethernet
    - WLAN
  - Log

### Ethernet Traffic Statistics

Clear Refresh

	LAN1	LAN2
<b>Transmitted Count</b>		
Transmitted Packet Count	4501	0
Transmitted Bytes Count	4746700	0
Dropped Packet Count	0	0
<b>Received Count</b>		
Received Packet Count	9136	0
Received Bytes Count	1093393	0
Dropped Packet Count	0	0

DAP-2695

192.168.0.50/index.php?uptime=1300&random=2013.10.30.10.44

**D-Link** DAP-2695

Home Maintenance Configuration System Logout Help

DAP-2695

- Basic Settings
- Advanced Settings
- Status
  - Device Information
  - Client Information
  - WDS Information
  - Channel Analyze
  - Stats
    - Ethernet
    - WLAN
  - Log

### WLAN Traffic Statistics

Clear Refresh

	2.4GHz	5GHz
<b>Transmitted Count</b>		
Transmitted Packet Count	0	4614
Transmitted Bytes Count	0	646441
Dropped Packet Count	4213	0
Transmitted Retry Count	0	0
<b>Received Count</b>		
Received Packet Count	0	0
Received Bytes Count	0	0
Dropped Packet Count	0	0
Received CRC Count	0	0
Received Decryption Error Count	0	0
Received MIC Error Count	0	0
Received PHY Error Count	0	0

DAP-2695

192.168.0.50/index.php?uptime=1300&random=2013.10.30.10.44

# D-Link

DAP-2695

Home Maintenance Configuration System Logout Help

- DAP-2695
  - Basic Settings
  - Advanced Settings
  - Status
    - Device Information
    - Client Information
    - WDS Information
    - Channel Analyze
    - Stats
    - Log
      - View Log
      - Log Settings

## View Log

First Page Last Page Previous Next Clear

Page 1 of 1

Time	Priority	Message
Uptime 0 day 00:21:35	[Wireless]	2.4G:Deauth:STA C4:85:08:18:F8:0D(reason 6)
Uptime 0 day 00:21:35	[Wireless]	2.4G:Deauth:STA C4:85:08:18:F8:0D(reason 6)
Uptime 0 day 00:21:35	[Wireless]	2.4G:Deauth:STA C4:85:08:18:F8:0D(reason 6)
Uptime 0 day 00:21:35	[Wireless]	2.4G:Deauth:STA C4:85:08:18:F8:0D(reason 6)
Uptime 0 day 00:21:35	[Wireless]	2.4G:Deauth:STA C4:85:08:18:F8:0D(reason 6)
Uptime 0 day 00:09:55	[Wireless]	5G:Initiate Wireless success
Uptime 0 day 00:09:54	[Wireless]	2.4G:Initiate Wireless success
Uptime 0 day 00:09:48	[Wireless]	5G:Initiate Wireless success
Uptime 0 day 00:09:38	[Wireless]	2.4G:Initiate Wireless success
Uptime 0 day 00:06:11	[SYSACT]	Web login success from 192.168.0.149
Uptime 0 day 00:00:38	[Wireless]	5G:Initiate Wireless success
Uptime 0 day 00:00:30	[Wireless]	2.4G:Initiate Wireless success
Uptime 0 day 00:00:26	[SYSACT]	Web login success from 192.168.0.149
Uptime 0 day 00:00:13	[Notice]	Ethernet ETH1 LINK UP
Uptime 0 day 00:00:08	[SYSACT]	AP cold start

DAP-2695

192.168.0.50/index.php?uptime=1300&random=2013.10.30.10.44

# D-Link

DAP-2695

Home Maintenance Configuration System Logout Help

- DAP-2695
  - Basic Settings
  - Advanced Settings
  - Status
    - Device Information
    - Client Information
    - WDS Information
    - Channel Analyze
    - Stats
    - Log
      - View Log
      - Log Settings

## Log Settings

### Log Settings

Log Server / IP Address

Log Type  System Activity  Wireless Activity  Notice

### Email Notification

Email Notification  Enable

Outgoing mail server (SMTP)

Authentication  Enable

SSL/TLS  Enable

From Email Address

To Email Address

Email Server Address

SMTP Port

User Name

Password

Confirm Password

### Email Log Schedule

Schedule  hours or when Log is full

Save



DAP-2695

192.168.0.50/index.php?uptime=1300&random=2013.10.30.10.44

# D-Link®

DAP-2695

Home Maintenance Configuration System Logout Help

- DAP-2695
  - Administration Settings
  - Firmware and SSL Certification Upload
  - Configuration File
  - Time and Date
- Basic Settings
  - Wireless
  - LAN
  - IPv6
- Advanced Settings
  - Performance
  - Wireless Resource
  - Multi-SSID
  - VLAN
  - Intrusion
  - Schedule
  - AP Array
  - Web Redirection
  - Internal RADIUS Server
  - ARP Spoofing Prevention
  - Fair Air Time
  - DHCP Server
  - Filters
  - Traffic Control
- Status
  - Device Information
  - Client Information
  - WDS Information
  - Channel Analyze
  - Stats
    - Log
      - View Log
      - Log Settings

## Log Settings

Log Server / IP Address

Log Type  System Activity  
 Wireless Activity  
 Notice

### Email Notification

Email Notification  Enable

Outgoing mail server (SMTP)

Authentication  Enable

SSL/TLS  Enable

From Email Address

To Email Address

Email Server Address

SMTP Port

User Name

Password

Confirm Password

### Email Log Schedule

Schedule  hours or when Log is full

Save

DAP-2695

192.168.0.50/index.php?uptime=1300&random=2013.10.30.10.44

- DAP-2695
  - Basic Settings
    - Wireless
    - LAN
    - IPv6
  - Advanced Settings
    - Performance
    - Wireless Resource
    - Multi-SSID
    - VLAN
    - Intrusion
    - Schedule
    - AP Array
    - Web Redirection
    - Internal RADIUS Server
    - ARP Spoofing Prevention
    - Fair Air Time
    - DHCP Server
    - Filters
    - Traffic Control
  - Status
    - Device Information
    - Client Information
    - WDS Information
    - Channel Analyze
    - Stats
      - Log
        - View Log
        - Log Settings

### Administration Settings

#### Limit Administrator

Limit Administrator VLAN ID  Enable

Limit Administrator IP  Enable

IP Range From:  To:

Item	From	To	Delete
------	------	----	--------

#### System Name Settings

System Name

Location

#### Login Settings

Login Name

New Password

Confirm Password

#### Console Settings

Status  Enable

Console Protocol  Telnet  SSH

Timeout

#### SNMP Settings

Status  Enable

Public Community String

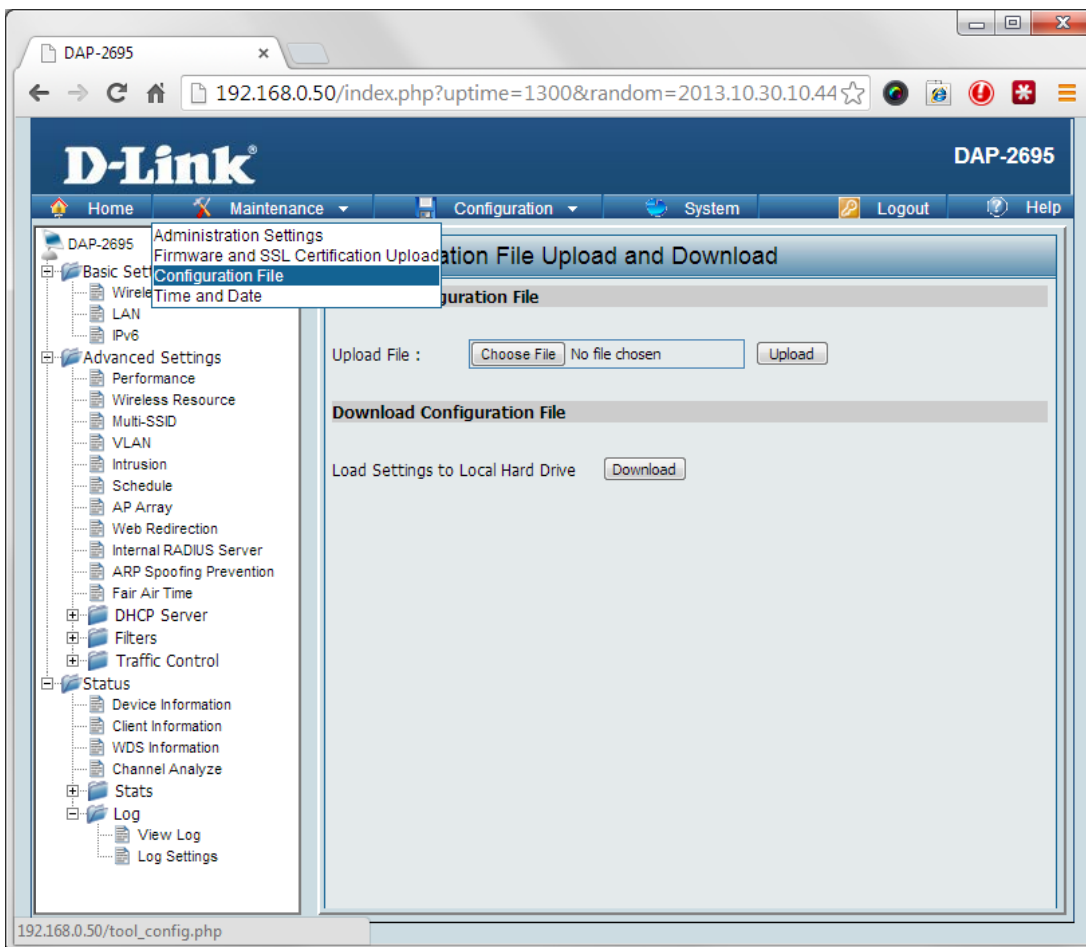
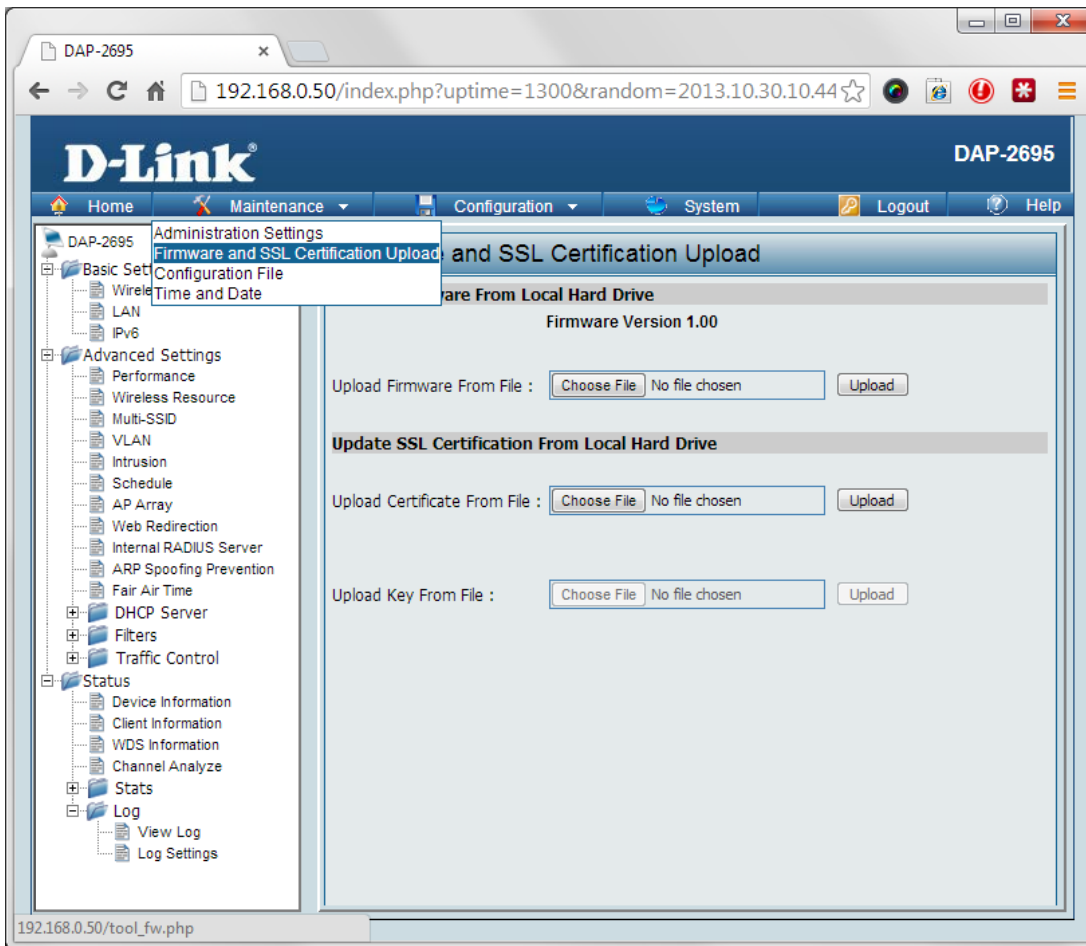
Private Community String

Trap Status  Enable

Trap Server IP

#### Ping Control Setting

Status  Enable



DAP-2695

192.168.0.50/index.php?uptime=1300&random=2013.10.30.10.44

# D-Link

DAP-2695

Home Maintenance Configuration System Logout Help

- Administration Settings
- Firmware and SSL Certification Upload
- Configuration File
- Time and Date

## Date Settings

Current Time 01/01/1970 00:25:20

### Automatic Time Configuration

Enable NTP Server

NTP Server

Time Zone (GMT+08:00) Ulaan Bataar

Enable Daylight Saving

### Set the Date and Time Manually

Date And Time

Year 2013 Month Oct Day 30

Hour 10 Minute 48 Second 22

Copy Your Computer's Time Settings

Save

192.168.0.50/tool\_sntp.php

DAP-2695

192.168.0.50/index.php?uptime=1300&random=2013.10.30.10.44

# D-Link

DAP-2695

Home Maintenance Configuration System Logout Help

- Basic Settings
- Wireless
- LAN
- IPv6
- Advanced Settings
- Performance
- Wireless Resource
- Multi-SSID
- VLAN
- Intrusion
- Schedule
- AP Array
- Web Redirection
- Internal RADIUS Server
- ARP Spoofing Prevention
- Fair Air Time
- DHCP Server
- Filters
- Traffic Control
- Status
- Device Information
- Client Information
- WDS Information
- Channel Analyze
- Stats
- Log
- View Log
- Log Settings

Save and Activate

Discard Changes

## Time Settings

Current Time 01/01/1970 00:25:20

### Automatic Time Configuration

Enable NTP Server

NTP Server

Time Zone (GMT+08:00) Ulaan Bataar

Enable Daylight Saving

### Set the Date and Time Manually

Date And Time

Year 2013 Month Oct Day 30

Hour 10 Minute 48 Second 22

Copy Your Computer's Time Settings

Save

192.168.0.50/\_action.php?ACTION\_POST=sys\_setting

DAP-2695

192.168.0.50/index.php?uptime=1300&random=2013.10.30.10.44

# D-Link®

DAP-2695

Home Maintenance Configuration System Logout Help

- DAP-2695
  - Basic Settings
    - Wireless
    - LAN
    - IPv6
  - Advanced Settings
    - Performance
    - Wireless Resource
    - Multi-SSID
    - VLAN
    - Intrusion
    - Schedule
    - AP Array
    - Web Redirection
    - Internal RADIUS Server
    - ARP Spoofing Prevention
    - Fair Air Time
    - DHCP Server
    - Filters
    - Traffic Control
  - Status
    - Device Information
    - Client Information
    - WDS Information
    - Channel Analyze
    - Stats
    - Log
      - View Log
      - Log Settings

## System Settings

Restart the Device

Restore to Factory Default Settings