

DAP-3220

A1, F/w 1.00



DAP-3220 - Mozilla Firefox

File Edit View History Bookmarks Tools Help

http://192.168.0.50/html/index.htm

D-Link 802.11g Exterior AP with PoE

Home Maintenance Configuration System Logout Help

DAP-3220

- Basic Settings
 - Wireless
 - LAN
- Advanced Settings
 - Performance
 - Grouping
 - Multi-SSID
 - Rogue AP
- DHCP Server
 - Dynamic Pool Setting
 - Static Pool Setting
 - Current IP Mapping L
- Filters
 - Wireless MAC ACL
 - WLAN Partition
- Status
 - Device Information
 - Client Information
 - WDS Information
- Stats
 - Ethernet
 - WLAN
- Log
 - View Log
 - Log Settings

System Information

Model Name	DAP-3220
System Time	Not Available
Up Time	Day 0, 0:22:40
Firmware Version	v1.00
IP Address	192.168.0.50

Done

DAP-3220 - Mozilla Firefox

File Edit View History Bookmarks Tools Help

http://192.168.0.50/html/index.htm

D-Link 802.11g Exterior AP with PoE

Home Maintenance Configuration System Logout Help

DAP-3220

- Basic Settings
 - Wireless
 - LAN
- Advanced Settings
 - Performance
 - Grouping
 - Multi-SSID
 - Rogue AP
- DHCP Server
 - Dynamic Pool Setting
 - Static Pool Setting
 - Current IP Mapping L
- Filters
 - Wireless MAC ACL
 - WLAN Partition
- Status
 - Device Information
 - Client Information
 - WDS Information
- Stats
 - Ethernet
 - WLAN
- Log
 - View Log
 - Log Settings

Wireless Settings

Wireless Band: IEEE802.11g

Mode: Access Point

SSID: [Text Field]

SSID Broadcast: WDS with AP, WDS, Wireless Client

Channel: [Text Field] 2.412 GHz Auto Channel Scan

Authentication: WPA-Personal

PassPhrase Settings

Cipher Type: TKIP Group Key Update Interval: 1800 Sec

PassPhrase: [Text Field]

Apply

Done

DAP-3220 - Mozilla Firefox

File Edit View History Bookmarks Tools Help

http://192.168.0.50/html/index.htm

D-Link 802.11g Exterior AP with PoE

Home Maintenance Configuration System Logout Help

DAP-3220

- Basic Settings
 - Wireless
 - LAN
- Advanced Settings
 - Performance
 - Grouping
 - Multi-SSID
 - Rogue AP
- DHCP Server
 - Dynamic Pool Setting
 - Static Pool Setting
 - Current IP Mapping L
- Filters
 - Wireless MAC ACL
 - VLAN Partition
- Status
 - Device Information
 - Client Information
 - WDS Information
- Stats
 - Ethernet
 - VLAN
- Log
 - View Log
 - Log Settings

Wireless Settings

Wireless Band: IEEE802.11g

Mode: Access Point

SSID: dlink

SSID Broadcast: Enable

Channel: 13 2.472 GHz Auto Channel Scan

Authentication: WPA-Personal

PassPhrase Set: Open System, Shared Key, Open System/Shared Key, WPA-Enterprise, WPA-Personal, WPA2-Enterprise, WPA2-Personal, WPA-Auto-Enterprise, WPA-Auto-Personal

Cipher Type: []

Update Interval: 1800 Sec

PassPhrase: []

Apply

Done

DAP-3220 - Mozilla Firefox

File Edit View History Bookmarks Tools Help

http://192.168.0.50/html/index.htm

D-Link 802.11g Exterior AP with PoE

Home Maintenance Configuration System Logout Help

DAP-3220

- Basic Settings
 - Wireless
 - LAN
- Advanced Settings
 - Performance
 - Grouping
 - Multi-SSID
 - Rogue AP
 - DHCP Server
 - Dynamic Pool Setting
 - Static Pool Setting
 - Current IP Mapping L
 - Filters
 - Wireless MAC ACL
 - WLAN Partition
- Status
 - Device Information
 - Client Information
 - WDS Information
 - Stats
 - Ethernet
 - WLAN
 - Log
 - View Log
 - Log Settings

Wireless Settings

Wireless Band: IEEE802.11g

Mode: Access Point

SSID: dlink

SSID Broadcast: Enable

Channel: 13 2.472 GHz Auto Channel Scan

Authentication: WPA2-Enterprise

RADIUS Server Settings

Cipher Type: TKIP Group Key Update Interval: 1800 Sec

Primary radius server setting

RADIUS Server:

RADIUS Port: 1812

RADIUS Secret:

Secondary radius server setting

Secondary RADIUS Mode: Disable

RADIUS Server:

RADIUS Port: 1812

RADIUS Secret:

Primary accounting server setting

Accounting Mode: Disable

Accounting Server:

Accounting Port: 1813

Secondary accounting server setting

Secondary Accounting Mode: Disable

Accounting Server:

Accounting Port: 1813

Apply

Done

DAP-3220 - Mozilla Firefox

File Edit View History Bookmarks Tools Help

http://192.168.0.50/html/index.htm

D-Link 802.11g Exterior AP with PoE

Home Maintenance Configuration System Logout Help

- DAP-3220
 - Basic Settings
 - Wireless
 - LAN
 - Advanced Settings
 - Performance
 - Grouping
 - Multi-SSID
 - Rogue AP
 - DHCP Server
 - Dynamic Pool Setting
 - Static Pool Setting
 - Current IP Mapping L
 - Filters
 - Wireless MAC ACL
 - WLAN Partition
 - Status
 - Device Information
 - Client Information
 - WDS Information
 - Stats
 - Ethernet
 - WLAN
 - Log
 - View Log
 - Log Settings

LAN Settings

Get IP From	Static (Manual) ▾
IP Address	192.168.0.50
Subnet Mask	255.255.255.0
Default Gateway	0.0.0.0

Apply

Done

DAP-3220 - Mozilla Firefox

File Edit View History Bookmarks Tools Help

http://192.168.0.50/html/index.htm

D-Link 802.11g Exterior AP with PoE

Home Maintenance Configuration System Logout Help

DAP-3220

- Basic Settings
 - Wireless
 - LAN
- Advanced Settings
 - Performance
 - Grouping
 - Multi-SSID
 - Rogue AP
 - DHCP Server
 - Dynamic Pool Setting
 - Static Pool Setting
 - Current IP Mapping L
 - Filters
 - Wireless MAC ACL
 - WLAN Partition
 - Status
 - Device Information
 - Client Information
 - WDS Information
 - Stats
 - Ethernet
 - WLAN
 - Log
 - View Log
 - Log Settings

Advanced Wireless Settings

Wireless Band: IEEE802.11g

Frequency: 2.472 GHz

Channel: 13

Data Rate: Auto

Beacon Interval (20 - 1000): 100

DTIM (1 - 255): 1

Fragment Length (256 - 2346): 2346

RTS Length (256 - 2346): 2346

Transmit Power: Full

Super Mode: Disable

Wireless: On

WMM: Enable

Preamble: Short and Long

Wireless B/G Mode: Mixed

ACK time settings for WDS

ACK time mode: Disable

ACK timeout number (0 - 4095): 100

Advance Data Rate Settings in 802.11b/g

Enable Data Rate Control: Disable Enable

1Mb/sec	Basic	2Mb/sec	Basic
5.5Mb/sec	Basic	11Mb/sec	Basic
6Mb/sec	Enable	9Mb/sec	Enable
12Mb/sec	Enable	18Mb/sec	Enable
24Mb/sec	Enable	36Mb/sec	Enable
48Mb/sec	Enable	54Mb/sec	Enable

Reset Data Rate Settings

Apply

Done

DAP-3220 - Mozilla Firefox

File Edit View History Bookmarks Tools Help

http://192.168.0.50/html/index.htm

D-Link 802.11g Exterior AP with PoE

Home Maintenance Configuration System Logout Help

DAP-3220

- Basic Settings
 - Wireless
 - LAN
- Advanced Settings
 - Performance
 - Grouping
 - Multi-SSID
 - Rogue AP
 - DHCP Server
 - Dynamic Pool Setting
 - Static Pool Setting
 - Current IP Mapping L
 - Filters
 - Wireless MAC ACL
 - VLAN Partition
 - Status
 - Device Information
 - Client Information
 - WDS Information
 - Stats
 - Ethernet
 - VLAN
 - Log
 - View Log
 - Log Settings

Advanced Wireless Settings

Wireless Band: IEEE802.11g

Frequency: 2.472 GHz

Channel: 13

Data Rate: Auto

Beacon Interval (20 - 1000): Auto

DTIM (1 - 255): 1 Mbps

Fragment Length (256 - 2346): 2 Mbps

RTS Length (256 - 2346): 5.5 Mbps

Transmit Power: 6 Mbps

Super Mode: 9 Mbps

Wireless: 11 Mbps

WMM: 12 Mbps

Preamble: Short and Long

Wireless B/G Mode: Mixed

ACK time settings for WDS

ACK time mode: Disable

ACK timeout number (0 - 4095): 100

Advance Data Rate Settings in 802.11b/g

Enable Data Rate Control: Disable Enable

Data Rate (Mb/sec)	1Mb/sec	Basic	2Mb/sec	Basic
	5.5Mb/sec	Basic	11Mb/sec	Basic
	6Mb/sec	Enable	9Mb/sec	Enable
	12Mb/sec	Enable	18Mb/sec	Enable
	24Mb/sec	Enable	36Mb/sec	Enable
	48Mb/sec	Enable	54Mb/sec	Enable

Reset Data Rate Settings

Apply

http://192.168.0.50/html/aPerformanceSetting.htm?1

DAP-3220 - Mozilla Firefox

File Edit View History Bookmarks Tools Help

http://192.168.0.50/html/index.htm

D-Link 802.11g Exterior AP with PoE

Home Maintenance Configuration System Logout Help

DAP-3220

- Basic Settings
 - Wireless
 - LAN
- Advanced Settings
 - Performance
 - Grouping
 - Multi-SSID
 - Rogue AP
 - DHCP Server
 - Dynamic Pool Setting
 - Static Pool Setting
 - Current IP Mapping L
 - Filters
 - Wireless MAC ACL
 - VLAN Partition
- Status
 - Device Information
 - Client Information
 - WDS Information
 - Stats
 - Ethernet
 - VLAN
 - Log
 - View Log
 - Log Settings

Advanced Wireless Settings

Wireless Band: IEEE802.11g

Frequency: 2.472 GHz

Channel: 13

Data Rate: Auto

Beacon Interval (20 - 1000): 100

DTIM (1 - 255): 1

Fragment Length (256 - 2346): 2346

RTS Length (256 - 2346): 2346

Transmit Power: Full

Super Mode: Full

Wireless: Half(-3dB), Quarter(-6dB), Eighth(-9dB), Min

WMM: Short and Long

Preamble: Short and Long

Wireless B/G Mode: Mixed

ACK time settings for WDS

ACK time mode: Disable

ACK timeout number (0 - 4095): 100

Advance Data Rate Settings in 802.11b/g

Enable Data Rate Control: Disable Enable

Data Rate (Mb/sec)	1Mb/sec	Basic	2Mb/sec	Basic
	5.5Mb/sec	Basic	11Mb/sec	Basic
	6Mb/sec	Enable	9Mb/sec	Enable
	12Mb/sec	Enable	18Mb/sec	Enable
	24Mb/sec	Enable	36Mb/sec	Enable
	48Mb/sec	Enable	54Mb/sec	Enable

Reset Data Rate Settings

Apply

http://192.168.0.50/html/aPerformanceSetting.htm?1

DAP-3220 - Mozilla Firefox

File Edit View History Bookmarks Tools Help

http://192.168.0.50/html/index.htm

D-Link 802.11g Exterior AP with PoE

Home Maintenance Configuration System Logout Help

DAP-3220

- Basic Settings
 - Wireless
 - LAN
- Advanced Settings
 - Performance
 - Grouping
 - Multi-SSID
 - Rogue AP
 - DHCP Server
 - Dynamic Pool Setting
 - Static Pool Setting
 - Current IP Mapping L
 - Filters
 - Wireless MAC ACL
 - VLAN Partition
- Status
 - Device Information
 - Client Information
 - WDS Information
 - Stats
 - Ethernet
 - VLAN
 - Log
 - View Log
 - Log Settings

Advanced Wireless Settings

Wireless Band: IEEE802.11g

Frequency: 2.472 GHz

Channel: 13

Data Rate: Auto

Beacon Interval (20 - 1000): 100

DTIM (1 - 255): 1

Fragment Length (256 - 2346): 2346

RTS Length (256 - 2346): 2346

Transmit Power: Full

Super Mode: **Disable**

Wireless: **Disable**

WMM: **Enable without Turbo**

Preamble: Short and Long

Wireless B/G Mode: Mixed

ACK time settings for WDS

ACK time mode: Disable

ACK timeout number (0 - 4095): 100

Advance Data Rate Settings in 802.11b/g

Enable Data Rate Control: Disable Enable

1Mb/sec	Basic	2Mb/sec	Basic
5.5Mb/sec	Basic	11Mb/sec	Basic
6Mb/sec	Enable	9Mb/sec	Enable
12Mb/sec	Enable	18Mb/sec	Enable
24Mb/sec	Enable	36Mb/sec	Enable
48Mb/sec	Enable	54Mb/sec	Enable

Reset Data Rate Settings

Apply

http://192.168.0.50/html/aPerformanceSetting.htm?1

DAP-3220 - Mozilla Firefox

File Edit View History Bookmarks Tools Help

http://192.168.0.50/html/index.htm

D-Link 802.11g Exterior AP with PoE

Home Maintenance Configuration System Logout Help

DAP-3220

- Basic Settings
 - Wireless
 - LAN
- Advanced Settings
 - Performance
 - Grouping
 - Multi-SSID
 - Rogue AP
 - DHCP Server
 - Dynamic Pool Setting
 - Static Pool Setting
 - Current IP Mapping L
 - Filters
 - Wireless MAC ACL
 - VLAN Partition
- Status
 - Device Information
 - Client Information
 - WDS Information
 - Stats
 - Ethernet
 - VLAN
 - Log
 - View Log
 - Log Settings

Advanced Wireless Settings

Wireless Band: IEEE802.11g

Frequency: 2.472 GHz

Channel: 13

Data Rate: Auto

Beacon Interval (20 - 1000): 100

DTIM (1 - 255): 1

Fragment Length (256 - 2346): 2346

RTS Length (256 - 2346): 2346

Transmit Power: Full

Super Mode: Disable

Wireless: On

WMM: Enable

Preamble: Short and Long

Wireless B/G Mode: Long Only

ACK time settings for WDS

ACK time mode: Disable

ACK timeout number (0 - 4095): 100

Advance Data Rate Settings in 802.11b/g

Enable Data Rate Control: Disable Enable

1Mb/sec	Basic	2Mb/sec	Basic
5.5Mb/sec	Basic	11Mb/sec	Basic
6Mb/sec	Enable	9Mb/sec	Enable
12Mb/sec	Enable	18Mb/sec	Enable
24Mb/sec	Enable	36Mb/sec	Enable
48Mb/sec	Enable	54Mb/sec	Enable

Reset Data Rate Settings

Apply

http://192.168.0.50/html/aPerformanceSetting.htm?1

DAP-3220 - Mozilla Firefox

File Edit View History Bookmarks Tools Help

http://192.168.0.50/html/index.htm

D-Link 802.11g Exterior AP with PoE

Home Maintenance Configuration System Logout Help

DAP-3220

- Basic Settings
 - Wireless
 - LAN
- Advanced Settings
 - Performance
 - Grouping
 - Multi-SSID
 - Rogue AP
 - DHCP Server
 - Dynamic Pool Setting
 - Static Pool Setting
 - Current IP Mapping L
 - Filters
 - Wireless MAC ACL
 - WLAN Partition
- Status
 - Device Information
 - Client Information
 - WDS Information
 - Stats
 - Ethernet
 - WLAN
 - Log
 - View Log
 - Log Settings

AP Grouping Settings

Load Balance: Disable

User Limit (0 - 64): 10

Link Integrity: Disable

Apply

Done

DAP-3220 - Mozilla Firefox

File Edit View History Bookmarks Tools Help

http://192.168.0.50/html/index.htm

D-Link 802.11g Exterior AP with PoE

Home Maintenance Configuration System Logout Help

DAP-3220

- Basic Settings
 - Wireless
 - LAN
- Advanced Settings
 - Performance
 - Grouping
 - Multi-SSID
 - Rogue AP
 - DHCP Server
 - Dynamic Pool Setting
 - Static Pool Setting
 - Current IP Mapping L
 - Filters
 - Wireless MAC ACL
 - WLAN Partition
- Status
 - Device Information
 - Client Information
 - WDS Information
 - Stats
 - Ethernet
 - WLAN
 - Log
 - View Log
 - Log Settings

Multi-SSID Settings

Enable Multi-SSID Enable VLAN State

Wireless Settings

Band: IEEE802.11g

Index: Primary SSID

SSID: Primary SSID

SSID Broadcast: Multi-SSID 1

Security: Multi-SSID 4

VLAN ID: Multi-SSID 6

WMM: ENABLE

PassPhrase Settings

Cipher Type: TKIP

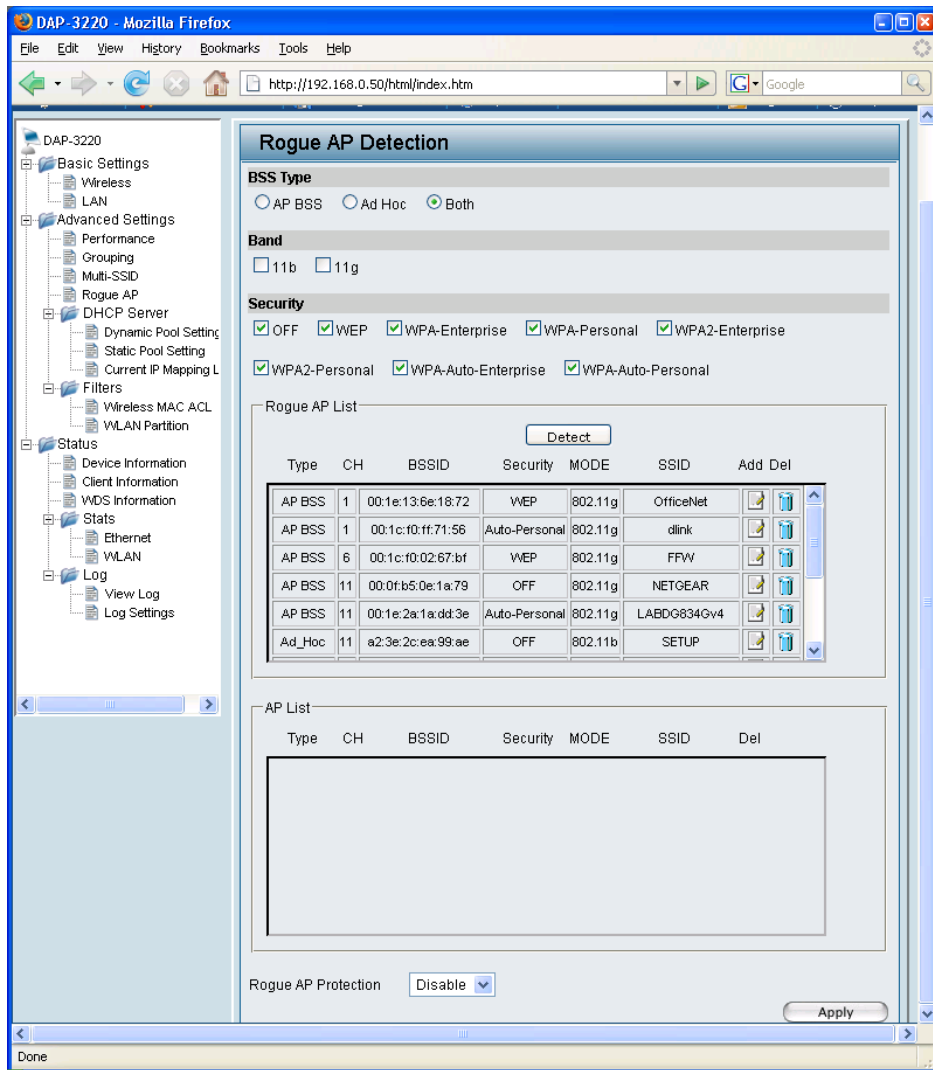
Group Key Update Interval: 1800 Sec

PassPhrase: *****

Apply

Index	SSID	Band	Encryption	VLAN ID	Delete
Primary	dlink	11g	WPA-Personal	OFF	

Done



Rogue AP Protection

Enable this function to keep the connection with the authorized clients even though there are rogue APs around.

DAP-3220 - Mozilla Firefox

http://192.168.0.50/html/index.htm

D-Link 802.11g Exterior AP with PoE

Home Maintenance Configuration System Logout Help

DAP-3220

- Basic Settings
 - Wireless
 - LAN
- Advanced Settings
 - Performance
 - Grouping
 - Multi-SSID
 - Rogue AP
 - DHCP Server
 - Dynamic Pool Setting
 - Static Pool Setting
 - Current IP Mapping L
 - Filters
 - Wireless MAC ACL
 - VLAN Partition
- Status
 - Device Information
 - Client Information
 - WDS Information
 - Stats
 - Ethernet
 - VLAN
 - Log
 - View Log
 - Log Settings

DHCP Dynamic Pools

DHCP Server Control

Function Enable/Disable:

Dynamic Pool Settings

IP Assigned From:

The Range of Pool (1-255):

Submask:

Gateway:

WINS:

DNS:

Domain Name:

Lease Time (60 - 31536000 sec):

Status:

Done

DAP-3220 - Mozilla Firefox

http://192.168.0.50/html/index.htm

D-Link 802.11g Exterior AP with PoE

Home Maintenance Configuration System Logout Help

DAP-3220

- Basic Settings
 - Wireless
 - LAN
- Advanced Settings
 - Performance
 - Grouping
 - Multi-SSID
 - Rogue AP
 - DHCP Server
 - Dynamic Pool Setting
 - Static Pool Setting
 - Current IP Mapping L
 - Filters
 - Wireless MAC ACL
 - VLAN Partition
- Status
 - Device Information
 - Client Information
 - WDS Information
 - Stats
 - Ethernet
 - VLAN
 - Log
 - View Log
 - Log Settings

DHCP Static Pools

DHCP Server Control

Function Enable/Disable:

Static Pool Settings

Assigned IP:

Assigned MAC Address:

Submask:

Gateway:

WINS:

DNS:

Domain Name:

Status:

MAC Address	IP Address	State	Edit	Delete

Done

DAP-3220 - Mozilla Firefox

File Edit View History Bookmarks Tools Help

http://192.168.0.50/html/index.htm

D-Link 802.11g Exterior AP with PoE

Home Maintenance Configuration System Logout Help

- DAP-3220
 - Basic Settings
 - Wireless
 - LAN
 - Advanced Settings
 - Performance
 - Grouping
 - Multi-SSID
 - Rogue AP
 - DHCP Server
 - Dynamic Pool Setting
 - Static Pool Setting
 - Current IP Mapping L
 - Filters
 - Wireless MAC ACL
 - VLAN Partition
 - Status
 - Device Information
 - Client Information
 - WDS Information
 - Stats
 - Ethernet
 - VLAN
 - Log
 - View Log
 - Log Settings

Current IP List

Current DHCP Dynamic Pools

Binding MAC Address	Assigned IP Address	Lease time
---------------------	---------------------	------------

Current DHCP Static Pools

Binding MAC Address	Assigned IP Address
---------------------	---------------------

Done

DAP-3220 - Mozilla Firefox

File Edit View History Bookmarks Tools Help

http://192.168.0.50/html/index.htm

D-Link 802.11g Exterior AP with PoE

Home Maintenance Configuration System Logout Help

DAP-3220

- Basic Settings
 - Wireless
 - LAN
- Advanced Settings
 - Performance
 - Grouping
 - Multi-SSID
 - Rogue AP
 - DHCP Server
 - Dynamic Pool Setting
 - Static Pool Setting
 - Current IP Mapping L
 - Filters
 - Wireless MAC ACL
 - WLAN Partition
- Status
 - Device Information
 - Client Information
 - WDS Information
 - Stats
 - Ethernet
 - WLAN
 - Log
 - View Log
 - Log Settings

Wireless MAC ACL

Wireless Band: IEEE802.11g

Access Control: Reject

MAC Address:

Apply

ID	MAC Address	Delete
1	be:ef:be:ef:be:ef	Delete

javascript:formSubmit()

DAP-3220 - Mozilla Firefox

File Edit View History Bookmarks Tools Help

http://192.168.0.50/html/index.htm

D-Link 802.11g Exterior AP with PoE

Home Maintenance Configuration System Logout Help

DAP-3220

- Basic Settings
 - Wireless
 - LAN
- Advanced Settings
 - Performance
 - Grouping
 - Multi-SSID
 - Rogue AP
 - DHCP Server
 - Dynamic Pool Setting
 - Static Pool Setting
 - Current IP Mapping L
 - Filters
 - Wireless MAC ACL
 - WLAN Partition
- Status
 - Device Information
 - Client Information
 - WDS Information
 - Stats
 - Ethernet
 - WLAN
 - Log
 - View Log
 - Log Settings

WLAN Partition Settings

Wireless Band: IEEE802.11g

Internal Station Connection: Enable

Ethernet to WLAN Access: Enable

Apply

Done

DAP-3220 - Mozilla Firefox

File Edit View History Bookmarks Tools Help

http://192.168.0.50/html/index.htm

D-Link 802.11g Exterior AP with PoE

Home Maintenance Configuration System Logout Help

DAP-3220

- Basic Settings
 - Wireless
 - LAN
- Advanced Settings
 - Performance
 - Grouping
 - Multi-SSID
 - Rogue AP
 - DHCP Server
 - Dynamic Pool Setting
 - Static Pool Setting
 - Current IP Mapping L
 - Filters
 - Wireless MAC ACL
 - WLAN Partition
 - Status
 - Device Information**
 - Client Information
 - WDS Information
 - Stats
 - Ethernet
 - WLAN
 - Log
 - View Log
 - Log Settings

Device Information

Firmware Version: v1.00

Ethernet MAC Address: 00:1e:58:97:c2:f4
 WLAN1 MAC Address : Primary : 00:1e:58:97:c2:f4
 Secondary: 00:1e:58:97:c2:f5 ~ 00:1e:58:97:c2:fb

Ethernet

Get IP From	Manual
IP Address	192.168.0.50
Subnet Mask	255.255.255.0
Gateway	0.0.0.0

Wireless (802.11g)

SSID	dlink
Channel	13
Super Mode	Disabled
Data Rate	Auto
Security Level	WPA-Personal / Encryption Enabled

AP Status

CPU Utilization	3%
Memory Utilization	26%

Done

DAP-3220 - Mozilla Firefox

File Edit View History Bookmarks Tools Help

http://192.168.0.50/html/index.htm

D-Link 802.11g Exterior AP with PoE

Home Maintenance Configuration System Logout Help

DAP-3220

- Basic Settings
 - Wireless
 - LAN
- Advanced Settings
 - Performance
 - Grouping
 - Multi-SSID
 - Rogue AP
 - DHCP Server
 - Dynamic Pool Setting
 - Static Pool Setting
 - Current IP Mapping L
 - Filters
 - Wireless MAC ACL
 - WLAN Partition
 - Status
 - Device Information
 - Client Information**
 - WDS Information
 - Stats
 - Ethernet
 - WLAN
 - Log
 - View Log
 - Log Settings

Client Information

Client Information Station association with 11B/G : 1

SSID	MAC	Band	Authentication	Signal	Power Saving Mode
Primary-SSID	00:1d:4f:cc:c5:69	G	WPA-Personal	74%	On

Done

DAP-3220 - Mozilla Firefox

File Edit View History Bookmarks Tools Help

http://192.168.0.50/html/index.htm

D-Link 802.11g Exterior AP with PoE

Home Maintenance Configuration System Logout Help

DAP-3220

- Basic Settings
 - Wireless
 - LAN
- Advanced Settings
 - Performance
 - Grouping
 - Multi-SSID
 - Rogue AP
 - DHCP Server
 - Dynamic Pool Setting
 - Static Pool Setting
 - Current IP Mapping L
 - Filters
 - Wireless MAC ACL
 - WLAN Partition
- Status
 - Device Information
 - Client Information
 - WDS Information
 - Stats
 - Ethernet
 - WLAN
 - Log
 - View Log
 - Log Settings

WDS Information

WDS Information Station association with 11B/G : 0

SSID	MAC	Band	Authentication	Signal	Channel

Done

DAP-3220 - Mozilla Firefox

File Edit View History Bookmarks Tools Help

http://192.168.0.50/html/index.htm

D-Link 802.11g Exterior AP with PoE

Home Maintenance Configuration System Logout Help

DAP-3220

- Basic Settings
 - Wireless
 - LAN
- Advanced Settings
 - Performance
 - Grouping
 - Multi-SSID
 - Rogue AP
 - DHCP Server
 - Dynamic Pool Setting
 - Static Pool Setting
 - Current IP Mapping L
 - Filters
 - Wireless MAC ACL
 - WLAN Partition
- Status
 - Device Information
 - Client Information
 - WDS Information
 - Stats
 - Ethernet
 - WLAN
 - Log
 - View Log
 - Log Settings

Ethernet Traffic Statistics

Refresh

Transmitted Count	
Transmitted Frame Count	10103
Transmitted Bytes Count	321749
Received Count	
Received Frame Count	18222
Received Bytes Count	3053215

Done

DAP-3220 - Mozilla Firefox

File Edit View History Bookmarks Tools Help

http://192.168.0.50/html/index.htm

D-Link 802.11g Exterior AP with PoE

Home Maintenance Configuration System Logout Help

DAP-3220

- Basic Settings
 - Wireless
 - LAN
- Advanced Settings
 - Performance
 - Grouping
 - Multi-SSID
 - Rogue AP
 - DHCP Server
 - Dynamic Pool Setting
 - Static Pool Setting
 - Current IP Mapping L
 - Filters
 - Wireless MAC ACL
 - WLAN Partition
- Status
 - Device Information
 - Client Information
 - WDS Information
 - Stats
 - Ethernet
 - WLAN
 - Log
 - View Log
 - Log Settings

WLAN Traffic Statistics

Refresh

Throughput

Transmit Success Rate	75 %
Transmit Retry Rate	0 %
Receive Success Rate	44 %
Receive Duplicate Rate	0 %
RTS Success Count	0
RTS Failure Count	878
Transmitted Bytes Count	2700472
Received Bytes Count	79873

Transmitted Frame Count

Transmitted Frame Count	2105
Multicast Transmitted Frame Count	112
Transmitted Error Count	721
Transmitted Total Retry Count	0
Transmitted Multiple Retry Count	0

Received Frame Count

Received Frame Count	673
Multicast Received Frame Count	191
Received Frame FCS Error Count	878
Received Frame Duplicate Count	2
ACK RCV failure Count	5193

WEP Frame Error Count

WEP Excluded Frame Count	0
WEP ICV Error Count	0

Done

DAP-3220 - Mozilla Firefox

File Edit View History Bookmarks Tools Help

http://192.168.0.50/html/index.htm

D-Link 802.11g Exterior AP with PoE

Home Maintenance Configuration System Logout Help

DAP-3220

- Basic Settings
 - Wireless
 - LAN
- Advanced Settings
 - Performance
 - Grouping
 - Multi-SSID
 - Rogue AP
 - DHCP Server
 - Dynamic Pool Setting
 - Static Pool Setting
 - Current IP Mapping L
 - Filters
 - Wireless MAC ACL
 - WLAN Partition
- Status
 - Device Information
 - Client Information
 - WDS Information
 - Stats
 - Ethernet
 - WLAN
 - Log
 - View Log
 - Log Settings

View Log

Total Log: 11 Clear Log

Time	Type	Message
WED JUN 11 15:52:13 2008	System	--AP cold start with fw version: v1.00
WED JUN 11 15:52:22 2008	Wireless	--WLAN1 Normal AP ready
WED JUN 11 15:52:43 2008	Wireless	--Association:11G STA 00:1d:4f:cc:c5:69 associated with WLAN1 SSID = dlink
WED JUN 11 15:53:10 2008	Wireless	--Received Disassoc: WLAN 1 11G STA 00:1d:4f:cc:c5:69
WED JUN 11 15:53:10 2008	Wireless	--Received Deauth: WLAN 1 11G STA 00:1d:4f:cc:c5:69 reason code=3
WED JUN 11 15:55:44 2008	System	--Web login success from 192.168.0.149
WED JUN 11 15:56:13 2008	Wireless	--Association:11G STA 00:1d:4f:cc:c5:69 associated with WLAN1 SSID = dlink
WED JUN 11 15:56:58 2008	System	--Web login success from 192.168.0.149
WED JUN 11 16:01:16 2008	System	--Web logout from 192.168.0.149
WED JUN 11 16:09:16 2008	System	--Web logout from 192.168.0.149
WED JUN 11 16:14:52 2008	System	--Web login success from 192.168.0.149

Done

