


Select Language: English 

For security, it is recommended to change the password for your administrator account.

New Password:

Confirm New Password:

Save

D-Link DCS-4633EV
v1.00

Select Language: English ▼

Password:

Login

Administrator | Other User

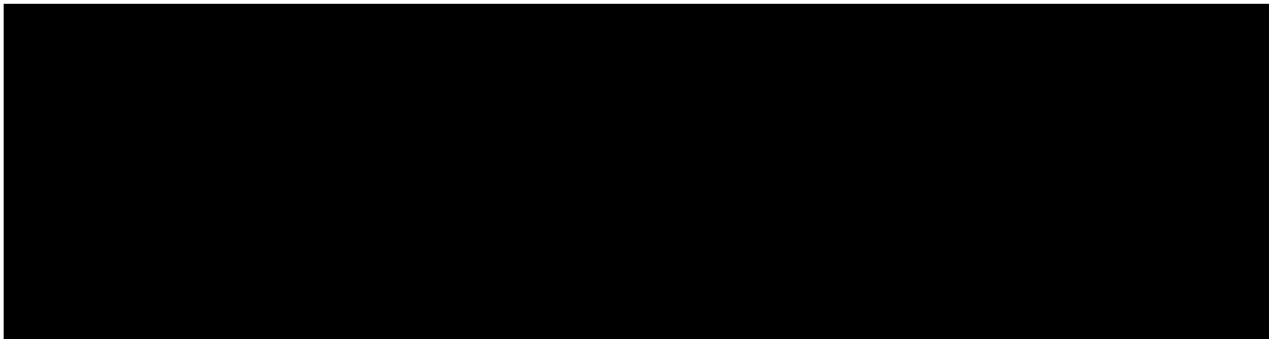


D-Link DCS-4633EV

192.168.20.207 says:
The browser plug-in (PanoViewer) needed to view your camera's live view, is not running or not installed. Press OK to download.

OK Cancel

Firmware Version: v1.00
IP Address: 192.168.20.207



The following pop-ups were blocked on this page:

- http://192.168.20.207/classes/panoviewer_lib.exe

Always allow pop-ups from http://192.168.20.207

Continue blocking pop-ups

Save As

This PC > Documents > !Products > DCS-4633EV

Search DCS-4633EV

Organize New folder

Name	Date modified	Type	Size
Images	15/11/2017 5:40 PM	File folder	
Snaps	9/01/2018 11:02 AM	File folder	

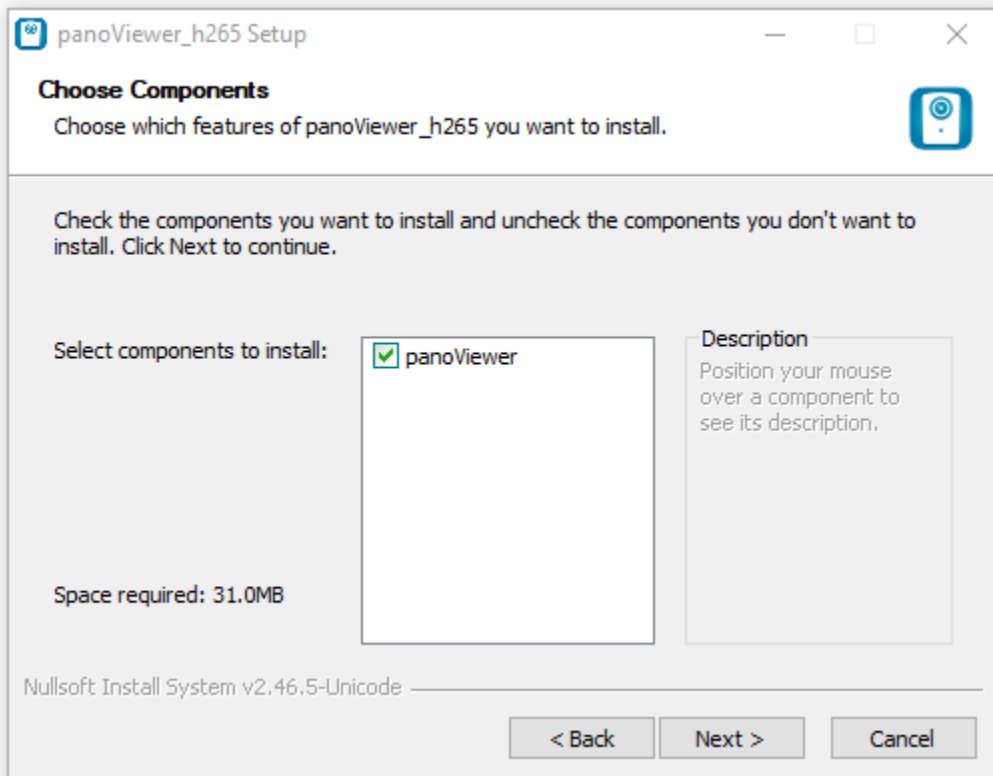
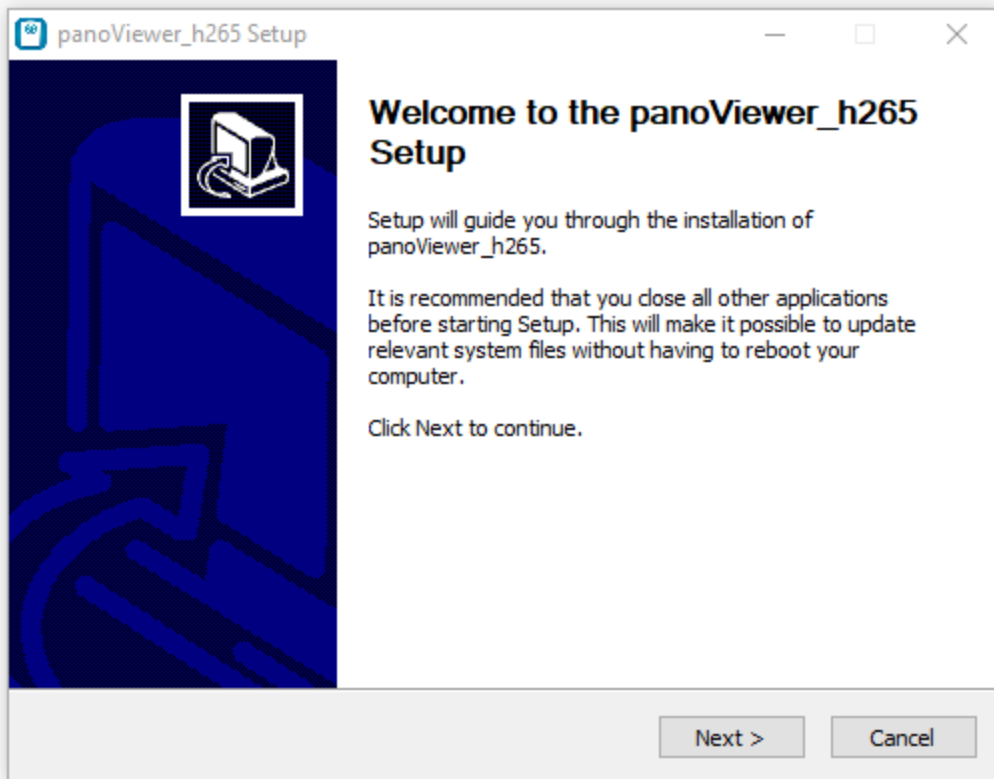
File name: panoviewer_lib.exe

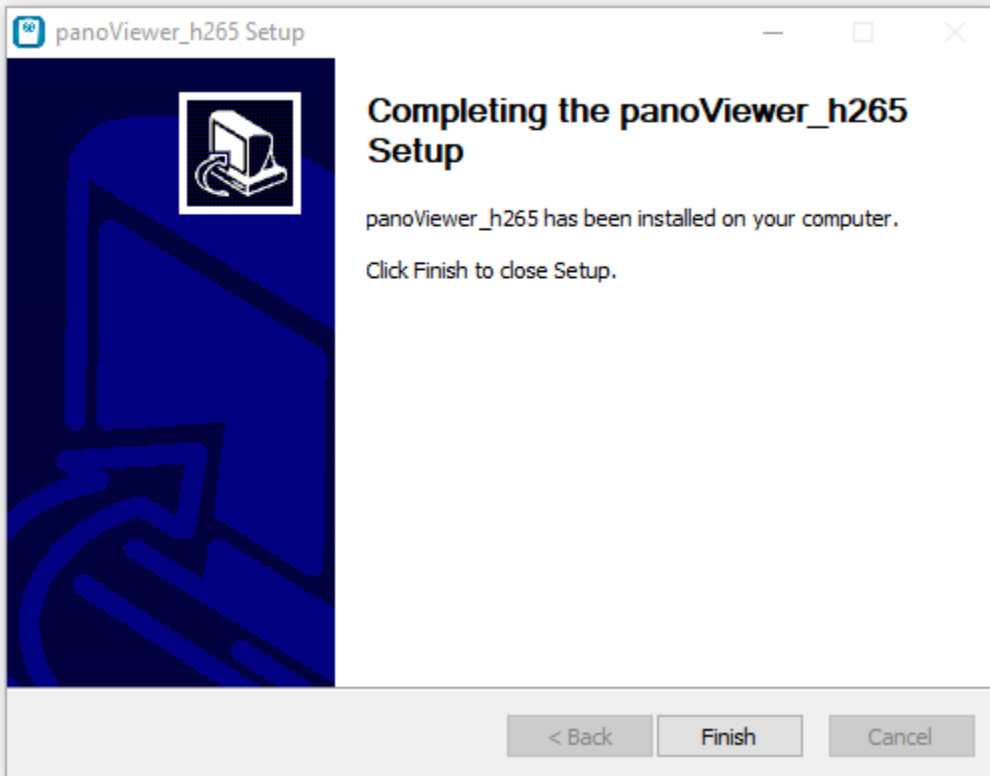
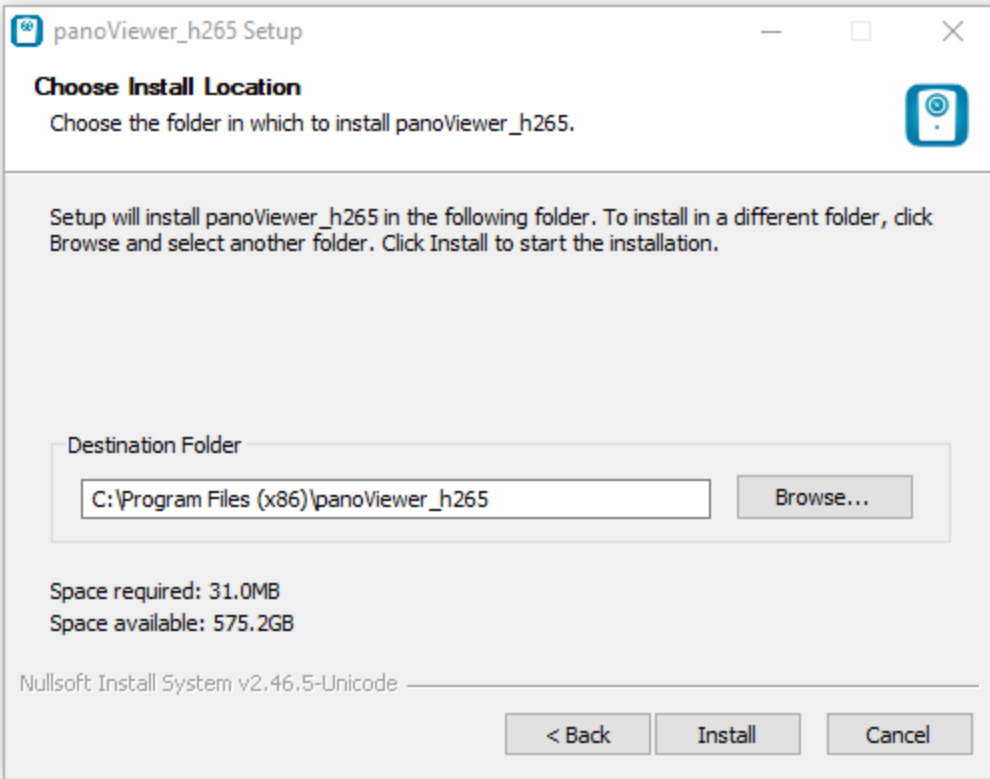
Save as type: Application

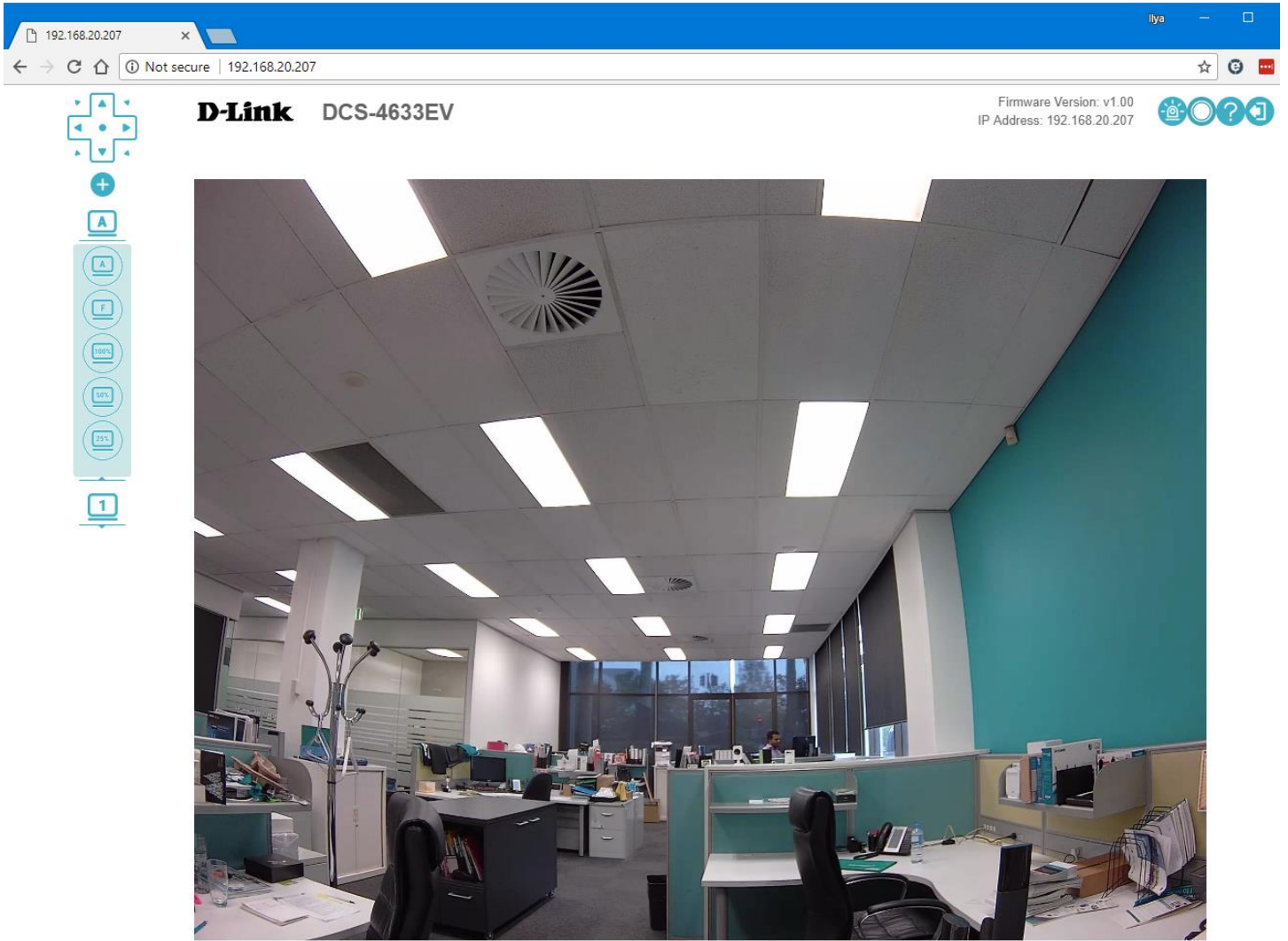
Installer Language

Please select a language.

English







IE 11:



D-Link DCS-4633EV

Firmware Version: v1.00
IP Address: 192.168.20.207



Copyright ©2016 D-Link Corporation

This webpage wants to run the following add-on: 'D-LINK Control' from 'D-LINK CORPORATION'. [What's the risk?](#)



D-Link DCS-4633EV

Firmware Version: v1.00
IP Address: 192.168.20.207



Copyright ©2016 D-Link Corporation



D-Link DCS-4633EV



D-Link DCS-4633EV



📺 Live Video

🔧 Setup Wizard

⚙️ Settings +

⚙️ Advanced Setup +

📄 Camera Options +

D-Link DCS-4633EV
v1.00

Setup Wizard ?

Network Setup Wizard

Use the Network Setup Wizard to configure the network settings on your Camera. Advanced users can configure additional network options in the Settings menu.

Network Setup Wizard

Motion Detection Setup

Use this wizard to configure Motion Detection and what actions the Camera should perform when motion is detected. Experienced users can configure additional options in the Settings > Recording Management > Event Management menu.

Motion Detection Setup Wizard

📺 Live Video

🔧 Setup Wizard

⚙️ Settings -

▾ Network Settings

LAN Settings

IPv6

PPPoE

HTTP and HTTPS

RTSP and Multicast

Bonjour

▸ Camera Settings

▸ Recording Management

⚙️ Advanced Setup +

📄 Camera Options +

D-Link DCS-4633EV
v1.00

LAN Settings ?

LAN Settings

DHCP

Static IP Client

IP Address 192 . 168 . 20 . 207

Subnet Mask 255 . 255 . 255 . 0

Default Router 192 . 168 . 20 . 254

Primary DNS 192 . 168 . 0 . 243

Secondary DNS 192 . 168 . 0 . 249

Save

📺 Live Video

🔧 Setup Wizard

⚙️ Settings -

▾ Network Settings

LAN Settings

IPv6

PPPoE

HTTP and HTTPS

RTSP and Multicast

Bonjour

▸ Camera Settings

▸ Recording Management

⚙️ Advanced Setup +

📄 Camera Options +

IPv6

IPv6

Information

Manually Set the IP Address

Optional IP Address / Prefix Length /

Optional Default Gateway

Optional Primary DNS

Save

📹 Live Video

🔧 Setup Wizard

⚙️ Settings -

▾ Network Settings

LAN Settings

IPv6

PPPoE

HTTP and HTTPS

RTSP and Multicast

Bonjour

▸ Camera Settings

▸ Recording Management

⚙️ Advanced Setup +

📄 Camera Options +

PPPoE Settings

PPPoE

User Name

Password

Confirm Password

PPPoE Status: PPPoE Inactive.

Save

📺 Live Video

🔧 Setup Wizard

⚙️ Settings -

▾ Network Settings

LAN Settings

IPv6

PPPoE

HTTP and HTTPS

RTSP and Multicast

Bonjour

▸ Camera Settings

▸ Recording Management

⚙️ Advanced Setup +

📄 Camera Options +



DCS-4633EV
v1.00

HTTP ?

HTTP

HTTPS

HTTP

Stream Authentication

HTTP Port

Access Name for Stream1

Access Name for Stream2

Save

📺 Live Video

🔧 Setup Wizard

⚙️ Settings -

• Network Settings

LAN Settings

IPv6

PPPoE

HTTP and HTTPS

RTSP and Multicast

Bonjour

• Camera Settings

• Recording Management

⚙️ Advanced Setup +

📷 Camera Options +

D-Link DCS-4633EV
v1.00

HTTPS ?

HTTP

HTTPS

HTTPS

HTTPS Port

443

HTTPS

HTTPS Secure Connection



Create Certificate Method

- Create Self-Signed Certificate Automatically
- Create Self-Signed Certificate Manually
- Create Certificate Request and Install

Create Certificate: [Create](#) A private key already exists

Certificate Information

Status	Active
Country	TW
State or Province	Taiwan

HTTP and HTTPS

RTSP and Multicast

Bonjour

▶ Camera Settings

▶ Recording Management

⚙️ Advanced Setup +

📄 Camera Options +

Create Certificate Method

- Create Self-Signed Certificate Automatically
- Create Self-Signed Certificate Manually
- Create Certificate Request and Install

Create Certificate: [Create](#) A private key already exists

Certificate Information

Status	Active
Country	TW
State or Province	Taiwan
Locality	Taipei
Organization	D-Link Taiwan
Organization Unit	R&D Dept.
Common Name	www.dlink.com.tw

- [CSR Property](#)
- [Certificate Property](#)
- [Remove](#)



DCS-4633EV
v1.00

RTSP ?

📺 Live Video

🔧 Setup Wizard

⚙️ Settings -

▾ Network Settings

LAN Settings

IPv6

PPPoE

HTTP and HTTPS

RTSP and Multicast

Bonjour

▸ Camera Settings

▸ Recording Management

⚙️ Advanced Setup +

📄 Camera Options +

RTSP

Multicast

RTSP

Authentication

Basic ▼

RTSP Port

554

Access Name for Stream1

live1.sdp

Access Name for Stream2

live2.sdp

Save

- 📺 Live Video
- 🔧 Setup Wizard
- ⚙️ Settings -
- ▾ Network Settings
 - LAN Settings
 - IPv6
 - PPPoE
 - HTTP and HTTPS
 - RTSP and Multicast**
 - Bonjour
- ▾ Camera Settings
- ▾ Recording Management
- ⚙️ Advanced Setup +
- 📄 Camera Options +

RTSP Multicast

Multicast

Multicast for Stream 1	<input type="checkbox"/>
Multicast Group Address Video	239 . 1 . 1 . 1
Multicast Video Port	6550
Multicast RTCP Video Port	6551
Multicast TTL [1~255]	64
Multicast for Stream 2	<input type="checkbox"/>
Multicast Group Address Video	239 . 1 . 1 . 2
Multicast Video Port	6554
Multicast RTCP Video Port	6555
Multicast TTL [1~255]	64

Save



DCS-4633EV
v1.00

Bonjour 

 Live Video

 Setup Wizard

 Settings -

▾ Network Settings

LAN Settings

IPv6

PPPoE

HTTP and HTTPS

RTSP and Multicast

Bonjour

▸ Camera Settings

▸ Recording Management

 Advanced Setup +

 Camera Options +

Bonjour

Bonjour

Bonjour Name

32 characters maximum

(Characters you may use in a Bonjour Name: "upper or lower case letters", "numbers" and "hyphens".)

📺 Live Video

🔧 Setup Wizard

⚙️ Settings -

▸ Network Settings

▾ Camera Settings

Camera Settings

Image Settings

Video Stream

Preset Point

▸ Recording Management

⚙️ Advanced Setup +

📄 Camera Options +

Camera Settings

Camera Name 32 characters maximum

Indicator LED

Indicator LED

Save

- 📺 Live Video
- 🔧 Setup Wizard
- ⚙️ Settings -
- ▾ Network Settings
- ▾ Camera Settings
- Camera Settings
- Image Settings**
- Video Stream
- Preset Point
- ▾ Recording Management
- ⚙️ Advanced Setup +
- 📄 Camera Options +

- Image**
- IR and ICR
- OSD Settings
- Privacy Mask

Live Video

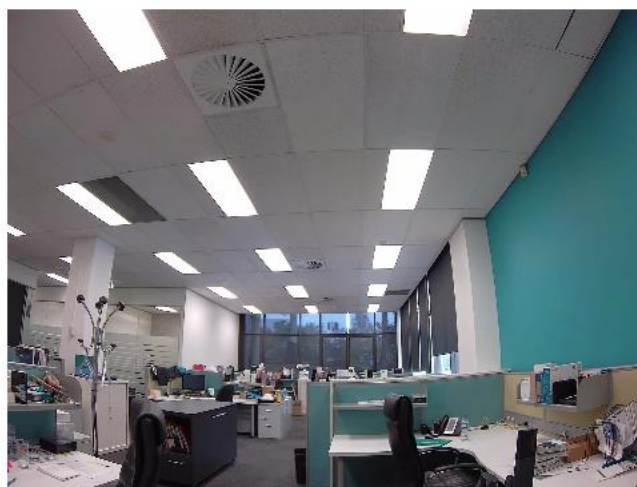


Image Settings

- Mirror
- Flip
- DIS
- Anti-Flicker 60 Hz 50 Hz
- White Balance ▾
- Exposure Mode ▾ Max Gain 30 dB
- Denoise 1
- 3D Denoise 3

3D Denoise	<input type="range"/>	<input type="text" value="3"/>
Hue	<input type="range"/>	<input type="text" value="50"/>
Brightness	<input type="range"/>	<input type="text" value="50"/>
Contrast	<input type="range"/>	<input type="text" value="50"/>
Saturation	<input type="range"/>	<input type="text" value="50"/>
Sharpness	<input type="range"/>	<input type="text" value="50"/>
WDR Level	<input type="range"/>	<input type="text" value="3"/>

Reset

Image Settings (Night Mode)

Night Mode

This profile is applied to Night Mode from To

Exposure Mode Max Gain dB

Denoise	<input type="range"/>	<input type="text" value="3"/>
3D Denoise	<input type="range"/>	<input type="text" value="1"/>
Brightness	<input type="range"/>	<input type="text" value="50"/>
Contrast	<input type="range"/>	<input type="text" value="50"/>
Saturation	<input type="range"/>	<input type="text" value="50"/>
Sharpness	<input type="range"/>	<input type="text" value="50"/>

Save

- 📺 Live Video
- 🔧 Setup Wizard
- ⚙️ Settings -
- ▶ Network Settings
- ▶ Camera Settings
 - Camera Settings
 - Image Settings**
 - Video Stream
 - Preset Point
- ▶ Recording Management
- ⚙️ Advanced Setup +
- 📄 Camera Options +

- Image & Audio
- IR and ICR**
- OSD Settings
- Privacy Mask

ICR

Removable IR-Cut Filter Trigger Condition:

Automatic Sensitivity

Day Mode

Night Mode

Schedule Mode

Day Mode (24hr)

From To

Disable IR LED

- 📺 Live Video
- 🔧 Setup Wizard
- ⚙️ Settings -
- ▶ Network Settings
- ▶ Camera Settings
 - Camera Settings
 - Image Settings**
 - Video Stream
 - Preset Point
- ▶ Recording Management
- ⚙️ Advanced Setup +
- 📄 Camera Options +

- Image & Audio
- IR and ICR
- OSD Settings**
- Privacy Mask

OSD Settings

OSD

Label 32 characters maximum

Show Time

📺 Live Video

🔧 Setup Wizard

⚙️ Settings -

▾ Network Settings

▾ Camera Settings

Camera Settings

Image Settings

Video Stream

Preset Point

▾ Recording Management

⚙️ Advanced Setup +

📄 Camera Options +

Image & Audio

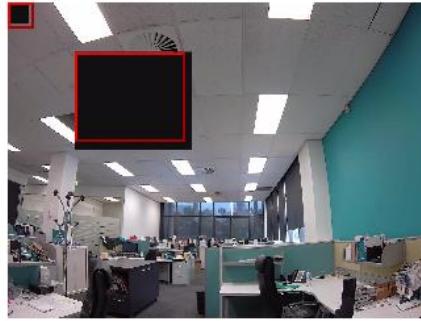
IR and ICR

OSD Settings

Privacy Mask

Privacy Mask Settings

Privacy Mask Settings



1 2 3

Add

Delete

Save

- Live Video
- Setup Wizard
- Settings -
- Network Settings
- Camera Settings
 - Camera Settings
 - Image Settings
 - Video Stream**
 - Preset Point
- Recording Management
- Advanced Setup +
- Camera Options +

Video Settings

Number of Active Profiles

Aspect Ratio

Warning: Changing the aspect ratio will clear all privacy mask, motion detection and preset settings.

Save

Video Profile 1

Mode

Frame Size

View Window Area

Maximum Frame Rate

Rate Control

Constant Bit Rate

Max Bit Rate

Fixed Quality

Intra frame period

Video Profile 2

📺 Live Video

🔧 Setup Wizard

⚙️ Settings -

▸ Network Settings

▸ Camera Settings

Camera Settings

Image Settings

Video Stream

Preset Point

▸ Recording Management

⚙️ Advanced Setup +

📄 Camera Options +

Video Settings

Number of Active Profiles ▼

Aspect Ratio ▼

Warning: Changing the aspect ratio will clear all privacy mask, motion detection and preset settings.

Save

Video Profile 1

Mode ▼

Frame Size ▼

View Window Area ▼

Maximum Frame Rate

Rate Control ▼

Constant Bit Rate

Max Bit Rate

Fixed Quality ▼

Intra frame period ▼







Video Profile 2

Video Profile 1

Mode	<input type="text" value="H.265"/>	<input type="button" value="v"/>
Frame Size	<input type="text" value="2048x1536"/>	<input type="button" value="v"/>
View Window Area	<input type="text" value="2048x1536"/> <input type="text" value="1440x1080"/> <input type="text" value="1280x960"/> <input type="text" value="800x600"/> <input type="text" value="640x480"/>	
Maximum Frame Rate		<input type="text" value="25"/>
Rate Control	<input type="text" value="VBR"/>	<input type="button" value="v"/>
Constant Bit Rate	<input type="text" value="10000"/>	
Max Bit Rate	<input type="text" value="10000"/>	
Fixed Quality	<input type="text" value="Excellent"/>	<input type="button" value="v"/>
Intra frame period	<input type="text" value="1/4 S"/>	<input type="button" value="v"/>






Video Profile 2

Video Profile 1

Mode	<input type="text" value="H.265"/> 
Frame Size	<input type="text" value="2048x1536"/> 
View Window Area	<input type="text" value="2048x1536"/> 
Maximum Frame Rate	<input type="range" value="25"/> <input type="text" value="25"/>
Rate Control	<input type="text" value="VBR"/> 
Constant Bit Rate	<input type="text" value="VBR"/> <input type="text" value="CBR"/> <input type="text" value="CVBR"/>
Max Bit Rate	<input type="text" value="10000"/>
Fixed Quality	<input type="text" value="Excellent"/> 
Intra frame period	<input type="text" value="1/4 S"/> 

Video Profile 2

Video Profile 1

Mode	<input type="text" value="H.265"/> 
Frame Size	<input type="text" value="2048x1536"/> 
View Window Area	<input type="text" value="2048x1536"/> 
Maximum Frame Rate	<input type="range" value="25"/> <input type="text" value="25"/>
Rate Control	<input type="text" value="VBR"/> 
Constant Bit Rate	<input type="text" value="10000"/>
Max Bit Rate	<input type="text" value="10000"/>
Fixed Quality	<input type="text" value="Excellent"/> 
Intra frame period	<input type="text" value="Standard"/> <input type="text" value="Good"/> <input checked="" type="text" value="Excellent"/>

Video Profile 2

- 📺 Live Video
- 🔧 Setup Wizard
- ⚙️ Settings -
- Network Settings
- ▾ Camera Settings
 - Camera Settings
 - Image Settings
 - Video Stream
 - Preset Point**
- Recording Management
- ⚙️ Advanced Setup +
- 📄 Camera Options +

Preset Control



Video Profile : ▾

ePTZ Speed : ▾

Preset

Input Preset Name :

Add

Rename

Supported characters: 0-9,A-Z,a-z,-,*,/,_

Preset List : ▾

Goto

Remove

Preset Sequence

Preset Name : Dwell Time



Preset List : ▾

Add

Dwell Time :

Update

Second(s) [3~30]

- 📺 Live Video
- 🔧 Setup Wizard
- ⚙️ Settings -
- Network Settings
- Camera Settings
- Recording Management
- Event Management**
- ⚙️ Advanced Setup +
- 📄 Camera Options +

- Event MGMT**
- SD Card
- Motion
- Tamper

Event Setup

There are four sections in the Event Setup page. These are event, server, media and recording. Click Add to add a new item to event, server, media or recording. Click Delete to delete the selected item from event, server, media or recording. Click on the item name to pop a window to edit it. There can be a maximum of 3 events and 2 recording. There can be a maximum of 8 server and 5 media configurations.

Server		
Server Name	Type	Address/Location
<input type="button" value="Add"/>	<input type="text"/>	<input type="button" value="Delete"/>

Media		
Server Name	Type	Source
<input type="button" value="Add"/>	<input type="text"/>	<input type="button" value="Delete"/>

Event Settings										
Server Name	Status	Sun	Mon	Tue	Wed	Thu	Fri	Sat	Time	Trigger
<input type="button" value="Add"/>	<input type="text"/>									<input type="button" value="Delete"/>

Record											
Server Name	Status	Sun	Mon	Tue	Wed	Thu	Fri	Sat	Time	Source	Destination
<input type="button" value="Add"/>	<input type="text"/>										<input type="button" value="Delete"/>

Server Type

Server Name:

Email

Sender's Email Address

Recipient Email Address

Server Address

User Name

Password

Port

StartTLS

FTP

Server Address

Port

Login Type

User Name

Password

Remote Folder Name

Passive Mode

Network Storage

Network Storage

Network Storage Location

(for example: my_nas\folder)

Workgroup

User Name

Password

Primary WINS Server

Keep Free Space: MB (minimum is 200 MB)

Cyclic

SD Card

Keep Free Space: MB (minimum is 200 MB)

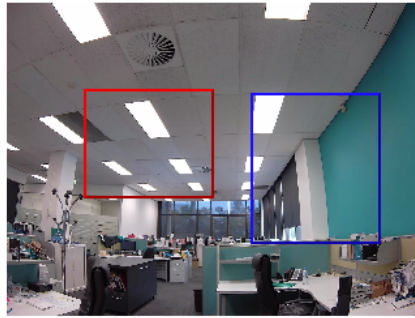
Cyclic

- 📺 Live Video
- 🔧 Setup Wizard
- ⚙️ Settings -
 - Network Settings
 - Camera Settings
 - Recording Management
 - Event Management**
 - ⚙️ Advanced Setup +
 - 📄 Camera Options +

- Event MGMT
- SD Card
- Motion**
- Tamper

Motion Detection Settings

Motion Detection Settings



Percentage ▾

Sensitivity ▾

1 2 3

- Add
- Delete
- Save

- 📺 Live Video
- 🔧 Setup Wizard
- ⚙️ Settings -
 - Network Settings
 - Camera Settings
 - Recording Management
 - Event Management**
 - ⚙️ Advanced Setup +
 - 📄 Camera Options +

- Event MGMT
- SD Card
- Motion
- Tamper**

Tamper Detection Settings

Tamper Detection

Trigger Duration Seconds [0 ~ 20]

Save

📺 Live Video

🔧 Setup Wizard

⚙️ Settings +

⚙️ Advanced Setup -

▾ Advanced

UPnP

DDNS

SNMP

802.1x

CoS and QoS

Access List

▸ Camera Configuration

📄 Camera Options +



DCS-4633EV
v1.00

UPnP ?

UPnP

UPnP Presentation

UPnP Port forwarding

Forwarding Port

Forwarding Status UPnP forwarding is inactive

Save

📺 Live Video

🔧 Setup Wizard

⚙️ Settings +

⚙️ Advanced Setup -

▾ Advanced

UPnP

DDNS

SNMP

802.1x

CoS and QoS

Access List

▸ Camera Configuration

📄 Camera Options +



DCS-4633EV
v1.00

DDNS ?

DDNS

DDNS

Server Address <<

Host Name

User Name

Password

Verify Password

Timeout (hours)

Status Active

Save

- Live Video
- Setup Wizard
- Settings +
- Advanced Setup -
- Advanced
 - UPnP
 - DDNS
 - SNMP**
 - 802.1x
 - CoS and QoS
 - Access List
- Camera Configuration
 - Camera Options +

SNMP Configuration

Enable SNMPv1, SNMPv2c	<input type="checkbox"/>
Read/Write Community	<input type="text" value="write_31F495"/>
Read-Only Community	<input type="text" value="public_31F495"/>
Enable SNMPv3	<input type="checkbox"/>
Read/Write Security Name	<input type="text"/>
Authentication Type	MD5 ▾
Authentication Password	<input type="password"/>
Encryption Password	<input type="password"/>
Read Only Security Name	<input type="text"/>
Authentication Type	MD5 ▾
Authentication Password	<input type="password"/>
Encryption Password	<input type="password"/>
Traps	<input type="checkbox"/>
Trap address	<input type="text"/>
Trap community	<input type="text"/>
Trap address 2	<input type="text"/>
Trap community 2	<input type="text"/>

📺 Live Video

🔧 Setup Wizard

⚙️ Settings +

⚙️ Advanced Setup -

▾ Advanced

UPnP

DDNS

SNMP

802.1x

CoS and QoS

Access List

▾ Camera Configuration

📄 Camera Options +



DCS-4633EV
v1.00

802.1x ?

IEEE 802.1x

IEEE 802.1X

EAP Type EAP-PEAP ▾

Identity

Password

Status Delete no file

Save

- Live Video
- Setup Wizard
- Settings +
- Advanced Setup -
- Advanced
 - UPnP
 - DDNS
 - SNMP
 - 802.1x
 - CoS and QoS**
 - Access List
- Camera Configuration
- Camera Options +

CoS Settings

CoS

VLAN ID [0~4095]

Live Video

Event/Alarm

Management

QoS Settings

QoS

Live Video

Event/Alarm

Management

Save

- 📺 Live Video
- 🔧 Setup Wizard
- ⚙️ Settings +
- ⚙️ Advanced Setup -
- ▾ Advanced
 - UPnP
 - DDNS
 - SNMP
 - 802.1x
 - CoS and QoS
 - Access List**
- Camera Configuration
- 📄 Camera Options +

Allow List

Start IP Address

End IP Address **Add**

Delete Allow List ▾ **Delete**

Deny List

Start IP Address

End IP Address **Add**

Delete Deny List ▾ **Delete**

- 📺 Live Video
- 🔧 Setup Wizard
- ⚙️ Settings +
- ⚙️ Advanced Setup -
- ▾ Advanced
 - Camera Configuration
 - Save and Load Config**
 - Factory Reset
 - Reboot Device
 - Firmware Update
- 📄 Camera Options +

Save and Load Configuration

Save to Local Hard Drive **Save**

Load from Local Hard Drive **Browse** **Upload**

📺 Live Video

🔧 Setup Wizard

⚙️ Settings +

⚙️ Advanced Setup -

▶ Advanced

▼ Camera Configuration

Save and Load Config

Factory Reset

Reboot Device

Firmware Update

📄 Camera Options +

Factory Reset

Keep Network Setting

Restore to Factory Default

📺 Live Video

🔧 Setup Wizard

⚙️ Settings +

⚙️ Advanced Setup -

▶ Advanced

▼ Camera Configuration

Save and Load Config

Factory Reset

Reboot Device

Firmware Update

📄 Camera Options +

Reboot Device

Reboot Camera

Schedule Reboot

Sun Mon Tue Wed Thu Fri Sat

Time Reboot

- 📺 Live Video

- 🔧 Setup Wizard

- ⚙️ Settings +

- ⚙️ Advanced Setup -
 - ▶ Advanced

 - ▶ Camera Configuration
 - Save and Load Config

 - Factory Reset

 - Reboot Device
 - Firmware Update**

- 📄 Camera Options +

Firmware Update

File Path:

📺 Live Video

🔧 Setup Wizard

⚙️ Settings +

⚙️ Advanced Setup +

📄 Camera Options -

Camera Info

▸ Time

▸ Administration Settings

Camera Log

D-Link DCS-4633EV
v1.00

Camera Info ?

Camera Information

IP Address	192.168.20.207
Link Local Address	169.254.180.74
PPPoE Address	
Camera Name	DCS-4633EV
Firmware Version	v1.00.00
Firmware Date	Wed, 15 Nov 2017 11:30:56 GMT
MAC Address	B0:C5:54:31:F4:95
Hardware Version	A
Connected Client(s)	0

Time & Date

Time & Date	Tue,09 Jan 2018 10:23:00 GMT
-------------	------------------------------

Service Status

Service	Enable/Disable	Protocol	Server Port
HTTP	Enable	TCP	80
Secondary HTTP	Disable	TCP	-
HTTPS	Disable	TCP	443
RTSP	Enable	TCP	554
UPnP Presentation	Enable	-	-

- 📺 Live Video
- 🔧 Setup Wizard
- ⚙️ Settings +
- ⚙️ Advanced Setup +
- 📷 Camera Options -
- 📷 Camera Info
 - ⌵ Time
 - Time Settings**
 - Auto Time Config
 - Set Date and Time
 - Administration Settings
 - Camera Log

Time Settings

Time Zone: (GMT+10:00) Canberra, Melbourne, Sydney ▼

Daylight Saving:

Offset: +01:00 ▼

Day of the Week	Week	Month	Hour	Minutes	Second
Start Time: Sunday ▼	1 ▼	1 ▼	00	00	00
End Time: Sunday ▼	1 ▼	1 ▼	00	00	00

Changes saved.

Save

- 📺 Live Video
- 🔧 Setup Wizard
- ⚙️ Settings +
- ⚙️ Advanced Setup +
- 📷 Camera Options -
- 📷 Camera Info
 - ⌵ Time
 - Time Settings
 - Auto Time Config**
 - Set Date and Time
 - Administration Settings
 - Camera Log

Automatic Time

NTP Server:

NTP Server: ntp.dlink.com.tw << Select NTP Server ▼
Select NTP Server
ntp1.dlink.com
ntp.dlink.com.tw

Save

📺 Live Video

🔧 Setup Wizard

⚙️ Settings +

⚙️ Advanced Setup +

📄 Camera Options -

Camera Info

▾ Time

Time Settings

Auto Time Config

Set Date and Time

▸ Administration Settings

Camera Log

Set Date and Time

Set Date and Time Manually

Copy Your PC's Time

Day 9 ▼ Month 1 ▼ Year 2018 ▼

Hour 13 ▼ Minute 24 ▼ Second 3 ▼

To use this function you must disable NTP server.

Save

📺 Live Video

🔧 Setup Wizard

⚙️ Settings +

⚙️ Advanced Setup +

📄 Camera Options -

Camera Info

▾ Time

▸ Administration Settings

Admin Password

User Accounts

User list

Camera Log

Admin Password Setting

New Password 30 characters maximum

Retype Password Save

📺 Live Video

🔧 Setup Wizard

⚙️ Settings +

⚙️ Advanced Setup +

📄 Camera Options -

Camera Info

▸ Time

▾ Administration Settings

Admin Password

User Accounts

User list

Camera Log

Add User Account

User Name	<input type="text"/>	20 users maximum
New Password	<input type="password"/>	30 characters maximum
Retype Password	<input type="password"/>	<input type="button" value="Add"/>

📺 Live Video

🔧 Setup Wizard

⚙️ Settings +

⚙️ Advanced Setup +

📄 Camera Options -

Camera Info

▸ Time

▾ Administration Settings

Admin Password

User Accounts

User list

Camera Log

User list

User Name	<input type="text" value="- User list -"/>	<input type="button" value="Delete"/>
-----------	--	---------------------------------------

- 📺 Live Video

- 🔧 Setup Wizard

- ⚙️ Settings +

- ⚙️ Advanced Setup +

- 📄 Camera Options -

- Camera Info

- ▶ Time

- ▶ Administration Settings

- Camera Log**

Camera Log

```
Jan 9 10:23:45 DCS-4633EV user.debug settime: Set system time
Jan 9 10:23:45 DCS-4633EV user.debug settime: [NTP SYNC] SYNC OK: System time : Jan
Jan 9 10:23:44 DCS-4633EV user.err syslog: unlink /tmp/nvramdb
Jan 9 10:23:43 DCS-4633EV user.err syslog: nvram_commit! (33)
Jan 9 10:23:35 DCS-4633EV user.debug settime: RTC not found
Jan 9 10:23:34 DCS-4633EV user.err httpd: settime -a "reset" -s "NTP" -S "ntp.dlink
Jan 9 10:23:34 DCS-4633EV user.info httpd: nvram_set Time.TimeZoneIndex=78
Jan 9 10:23:34 DCS-4633EV user.err httpd: nvram_set Time.TimeZone=GMT+10
Jan 9 10:22:15 DCS-4633EV user.err onvifserver: Login Fail! IP = 192.168.20.60
Jan 9 10:22:15 DCS-4633EV user.err onvifserver: GetNetworkInterfaces - Auth Fail
Jan 9 10:19:53 DCS-4633EV user.info Venc: profile[0] running 0
Jan 9 10:19:53 DCS-4633EV user.debug rtsp-svr: client (192.168.0.150) closed TCP co
Jan 9 10:19:53 DCS-4633EV user.debug rtsp-svr: client (192.168.0.150) closed TCP co
Jan 9 10:19:53 DCS-4633EV user.debug rtsp-svr: session count 0
Jan 9 10:19:53 DCS-4633EV user.debug rtsp-svr: tearing down rtsp://192.168.20.207:8
Jan 9 10:19:53 DCS-4633EV user.debug rtsp-svr: client (192.168.0.150) request: 'TEA
Jan 9 10:19:27 DCS-4633EV user.err syslog: unlink /tmp/nvramdb
Jan 9 10:19:26 DCS-4633EV user.err syslog: nvram_commit! (32)
Jan 9 10:19:21 DCS-4633EV user.err syslog: unlink /tmp/nvramdb
Jan 9 10:19:20 DCS-4633EV user.info Venc: his_osd_updatePMask!
Jan 9 10:19:20 DCS-4633EV user.info Venc: reconfig video .....
Jan 9 10:19:20 DCS-4633EV user.err onvifserver: unhandler command: reconfigmd
Jan 9 10:19:20 DCS-4633EV user.err onvifserver: nvram_set Onvif.PM1.RightBottom=676
Jan 9 10:19:20 DCS-4633EV user.err onvifserver: nvram_set Onvif.PM1.LeftTop=4390,28
Jan 9 10:19:20 DCS-4633EV user.err onvifserver: nvram_set Onvif.Motion1.P4=899.1619
Jan 9 10:19:20 DCS-4633EV user.err onvifserver: nvram_set Onvif.Motion1.P3=1384.586
Jan 9 10:19:20 DCS-4633EV user.err onvifserver: nvram_set Onvif.Motion1.P2=1384.586
Jan 9 10:19:20 DCS-4633EV user.err onvifserver: nvram_set Onvif.Motion1.P1=899.1619
Jan 9 10:19:20 DCS-4633EV user.err onvifserver: nvram_set Onvif.PM0.RightBottom=363
Jan 9 10:19:20 DCS-4633EV user.err onvifserver: nvram_set Onvif.Motion0.P4=283.6763
Jan 9 10:19:20 DCS-4633EV user.err onvifserver: nvram_set Onvif.Motion0.P3=745.3417
Jan 9 10:19:20 DCS-4633EV user.err onvifserver: nvram_set Onvif.Motion0.P2=745.3417
```

Clear Download

DNR-326 (FW 2.60) – can record from DCS-4633EV set as ONVIF camera:

CAMERA SETUP			
Index	Camera 6		
Camera Name	<input type="text" value="4633"/>		
Address	<input type="text" value="192.168.20.207"/>	Port	<input type="text" value="80"/>
Administrator Name	<input type="text" value="admin"/>	Password	<input type="password" value="••••••••"/>
Camera Channel	<input type="text" value="1"/>	Protocol	<input checked="" type="radio"/> TCP <input type="radio"/> UDP <input type="radio"/> HTTP
Vendor	<input type="text" value="ONVIF"/>	Model	<input type="text" value="ONVIF"/>

Product Page : DNR-326

Firmware Version: 2.60

D-Link

DNR-326 // LIVE VIDEO **PLAYBACK** SETUP MAINTENANCE STATUS SUPPORT

2018/01/09 PM04:37:00
CAM6 4633



2018/01/09 16:37:00 1x PAUSE



NVR

Can be added as Universal Model or ONVIF but no live view.

D-Link® DNR-2020-04P

2018/03/08 16:32:32LivePlay Back

Search


Search D-link Onvif

IP Address	Model	MAC Address
------------	-------	-------------

Camera List

Delete	Channel	IP Address	Camera Name	Model
—	CH01	192.168.20.54	DCS-6517	DCS-6517
—	CH02	192.168.20.53	DCS-6314	DCS-6314
—	CH03	192.168.20.52	DCS-4703E	DCS-4703E
—	CH04	192.168.20.55	DCS-4603	DCS-4603
—	CH05	192.168.20.56	DCS-4622	DCS-4622
—	CH06	192.168.20.51	DCS-4802E	DCS-4802E
—	CH07	192.168.20.57	DCS-7517	DCS-7517B
—	CH08	192.168.20.175	DCS-4633EV	Universal Model

Camera Preview



Camera Name :

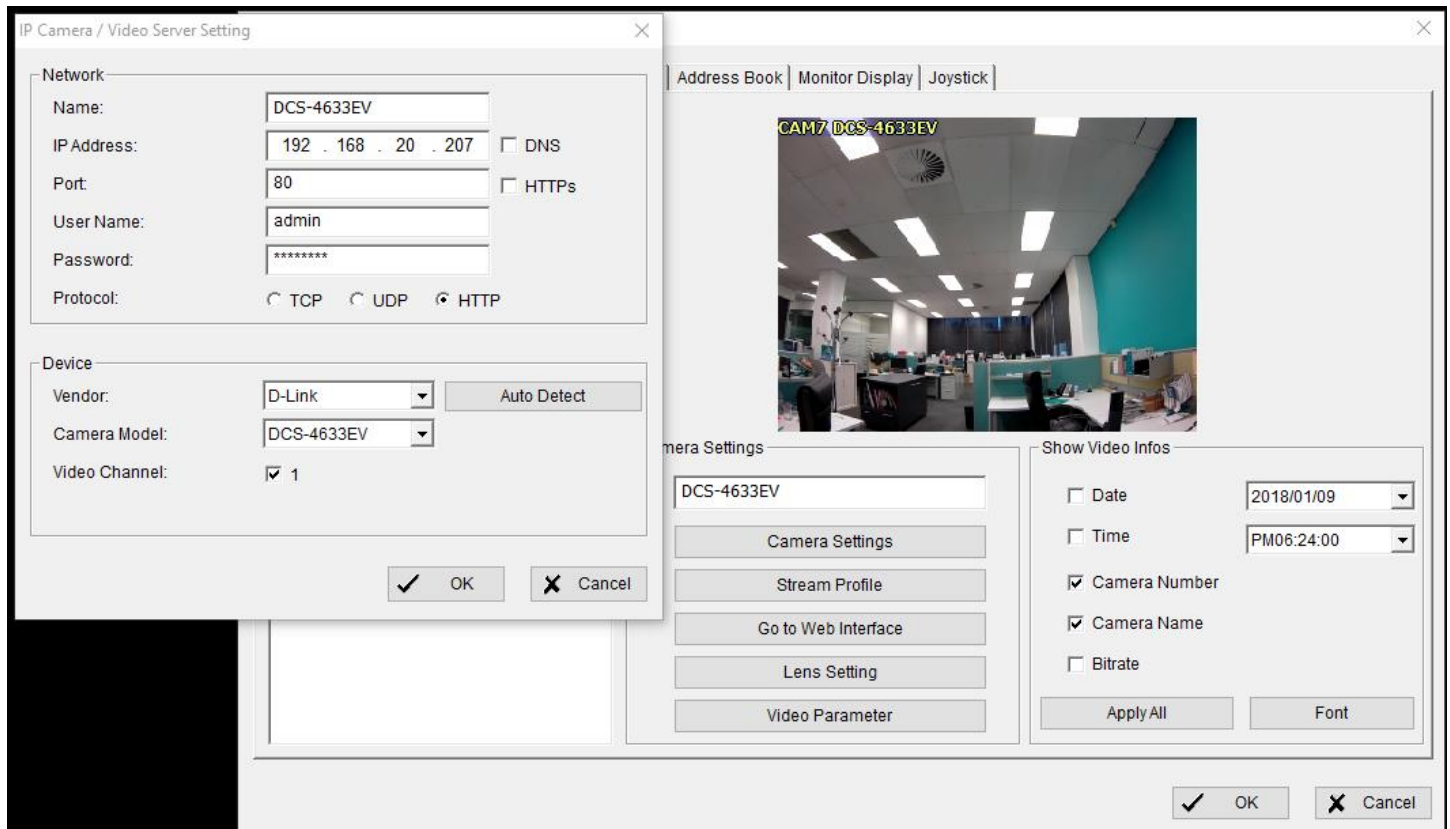
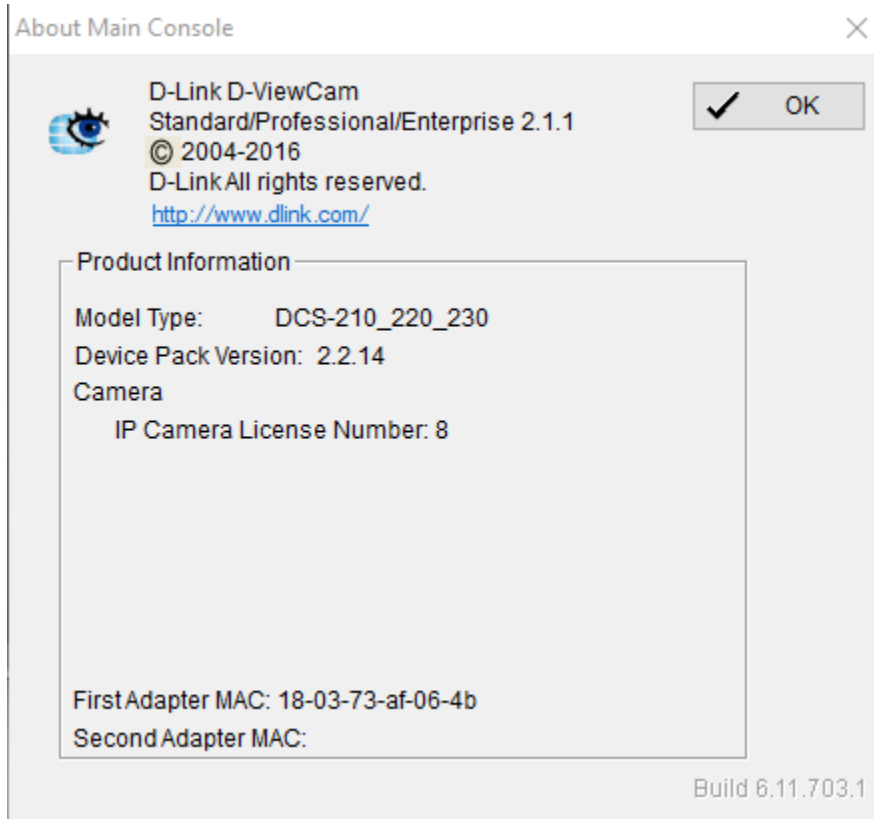
Address : Port :

User Name : Password :

Vendor : Model :

Add to Channel :

D-ViewCam Standard (ver. 2.1.1, Device Pack 2.2.14)



TinyCAM app:

