

192.168.0.9/setup.html x Ilya

192.168.0.9/setup.html

Live video

Setup Wizard

Settings +

Advanced Setup +

Camera Info +

D-Link DCS-4701E
2.00

Setup Wizard ?

INTERNET CONNECTION SETTINGS

In this section, you can setup the IP camera's wired network interface settings. If you are configuring this device for the first time, D-Link recommends that you click the Setup Wizard button, and follow the instructions on screen. If you wish to modify or configure the IP camera settings manually, click manual setup to enable the IP camera connection setup.

Internet Connection Setup Wizard

IP CAMERA MOTION DETECTION SETTINGS

In this section, you can setup the IP camera's Motion Detection settings. If you are configuring this device for the first time, D-Link recommends that you click the Setup Wizard button, and follow the instructions on screen. If you wish to modify or configure the Motion Detection manually, click manual setup to enable the Motion Detection setup.

Motion Detection Setup Wizard

Copyright ©2018 D-Link Corporation

192.168.0.9/setup.html x

192.168.0.9/setup.html

Live video

Setup Wizard

Settings -

Network Settings

LAN Settings

IPv6

PPPoE

HTTP and HTTPS

RTSP and Multicast

Bonjour

Camera Settings

Event Management

Advanced Setup +

Camera Info +

D-Link DCS-4701E 2.00

LAN Settings ?

LAN SETTINGS

DHCP

Static IP Client

IP address 192.168.0.9

Subnet mask 255.255.255.0

Default router 192.168.0.253

Primary DNS 192.168.0.243

Secondary DNS 192.168.0.249

Save

Copyright ©2018 D-Link Corporation

192.168.0.9/setup.html x

Not secure | 192.168.0.9/setup.html

ilya

D-Link DCS-4701E 2.00 HTTP ?

HTTP HTTPS

HTTP

HTTP port

Access name for stream1

Access name for stream2

Save

Copyright ©2018 D-Link Corporation

- Live video
- Setup Wizard
- Settings
 - Network Settings
 - LAN Settings
 - IPv6
 - PPPoE
 - HTTP and HTTPS**
 - RTSP and Multicast
 - Bonjour
 - Camera Settings
 - Event Management
- Advanced Setup +
- Camera Info +

192.168.0.9/setup.html x

Not secure | 192.168.0.9/setup.html

D-Link DCS-4701E 2.00 **RTSP ?**

RTSP Multicast

RTSP

Authentication

RTSP port

Access name for stream1

Access name for stream2

Copyright ©2018 D-Link Corporation

Live video

Setup Wizard

Settings -

Network Settings

LAN Settings

IPv6

PPPoE

HTTP and HTTPS

RTSP and Multicast

Bonjour

Camera Settings

Event Management

Advanced Setup +

Camera Info +

192.168.0.9/setup.html x

Not secure | 192.168.0.9/setup.html

D-Link DCS-4701E 2.00 Bonjour ?

BONJOUR SETTINGS

Enable Bonjour

Bonjour Name 63 characters maximum

(Characters you may use in a Bonjour Name: "upper or lower case letters", "numbers" and "hyphens".)

Save

- Live video
- Setup Wizard
- Settings -
 - Network Settings
 - LAN Settings
 - IPv6
 - PPPoE
 - HTTP and HTTPS
 - RTSP and Multicast
 - Bonjour**
 - Camera Settings
 - Event Management
- Advanced Setup +
- Camera Info +

Copyright ©2018 D-Link Corporation

192.168.0.9/setup.html x

Not secure | 192.168.0.9/setup.html

D-Link DCS-4701E 2.00 Camera Settings ?

Camera Settings

IP Camera Name 32 characters maximum

LED

LED On Off

[Save](#)

Copyright ©2018 D-Link Corporation

Live video

Setup Wizard

Settings -

▸ **Network Settings**

▸ **Camera Settings**

Camera Settings

Image and Audio Settings

Video Stream

▸ **Event Management**

Advanced Setup +

Camera Info +

192.168.0.9/setup.html x

Not secure | 192.168.0.9/setup.html

D-Link DCS-4701E 2.00

Image and Audio Settings ?

Audio and Video ICR and IR OSD

LIVE VIDEO




IMAGE SETTINGS

Mirror On Off

Flip On Off

Anti Flicker 60 Hz 50 Hz

Copyright ©2018 D-Link Corporation

- Live video
- Setup Wizard
- Settings
 - Network Settings
 - Camera Settings
 - Camera Settings
 - Image and Audio Settings**
 - Video Stream
 - Event Management
- Advanced Setup +
- Camera Info +

192.168.0.9/setup.html x

Not secure | 192.168.0.9/setup.html

D-Link DCS-4701E 2.00 ICR and IR ?

Audio and Video **ICR and IR** OSD

ICR

Removable IR-Cut filter trigger condition:

Automatic Sensitivity

Day mode

Night mode

Schedule mode

Day mode(24hr)

From To

IR LIGHT

IR Light Control

Off

On

Sync. With ICR

...

Copyright ©2018 D-Link Corporation

192.168.0.9/setup.html x

Not secure | 192.168.0.9/setup.html

Live video

Setup Wizard

Settings -

▸ **Network Settings**

▸ **Camera Settings**

Camera Settings

Image and Audio Settings

Video Stream

▸ **Event Management**

Advanced Setup +

Camera Info +

D-Link DCS-4701E
2.00

ICR and IR ?

Day mode

Night mode

Schedule mode

Day mode(24hr)

From 00 00 To 23 59

IR LIGHT

IR Light Control Highest

Off

On

Sync. With ICR

Schedule

IR Light Control On(24hr)

From 00 00 To 23 59

Save

Copyright ©2018 D-Link Corporation

- Live video
- Setup Wizard
- Settings -
- Network Settings
- Camera Settings
 - Camera Settings
 - Image and Audio Settings
 - Video Stream**
- Event Management
- Advanced Setup +
- Camera Info +

D-Link DCS-4701E
2.00

Video Stream ?

VIDEO SETTINGS

Aspect ratio

Warning: Change the aspect ratio will clear the settings of privacy mask and preset and motion detection.

Save

VIDEO PROFILE 1

Mode

Frame size

Maximum frame rate

Video quality

Constant bit rate

Fixed quality

VIDEO PROFILE 2

Mode

192.168.0.9/setup.html x

Not secure | 192.168.0.9/setup.html

D-Link DCS-4701E 2.00 Event Management ?

Event Management Privacy Mask Motion Detection

Server

Name	Type	Address/Location
Mail Serve..	Email	mail.company.com.au

Add Mail Server Delete

Media

Name	Type	Source
Snap	Snapshot	profile 1

Add Snap Delete

Event

Name	Status	Sun	Mon	Tue	Wed	Thu	Fri	Sat	Time	Trigger
Motion	ON	V	V	V	V	V	V	V	00:00-23:59	Motion

Add Motion Delete

Recording

Name	Status	Sun	Mon	Tue	Wed	Thu	Fri	Sat	Time	Source	Destination
										profile	

Copyright ©2018 D-Link Corporation

192.168.0.9/setup.html x

Not secure | 192.168.0.9/setup.html

D-Link DCS-4701E 2.00 Event Management ?

Event Management Privacy Mask Motion Detection

Server Type _____

Server Name: Mail Server

Email

Sender email address: camera@company.com.au

Recipient email address: security@company.com.au

Server address: mail.company.com.au

User name: camera@company.com.au

Password:

Port: 25

This server requires a secure connection (StartTLS)

FTP

Server address: _____

Copyright ©2018 D-Link Corporation

Navigation menu: Live video, Setup Wizard, Settings (Network Settings, Camera Settings, Event Management), Advanced Setup, Camera Info

192.168.0.9/setup.html x

Not secure | 192.168.0.9/setup.html

ilya

D-Link DCS-4701E 2.00 **Event Management ?**

This server requires a secure connection (StartTLS)

FTP

Server address

Port

Login Type ▼

User name

Password

Remote folder name

Passive mode

Network storage

Network storage location

(for example: \\my_nas\disk\folder)

Workgroup

Copyright ©2018 D-Link Corporation

Live video

Setup Wizard

Settings

Network Settings

Camera Settings

Event Management

Event Management

Advanced Setup

Camera Info

192.168.0.9/setup.html x

Not secure | 192.168.0.9/setup.html

D-Link DCS-4701E 2.00

Event Management ?

- Live video
- Setup Wizard
- Settings -
 - Network Settings
 - Camera Settings
 - Event Management**
- Event Management
- Advanced Setup +
- Camera Info +

User name

Password

Remote folder name

Passive mode

Network storage

Network storage location

(for example: \\my_nas\disk\folder)

Workgroup

User name

Password

Primary WINS server

Copyright ©2018 D-Link Corporation

192.168.0.9/setup.html x
Not secure | 192.168.0.9/setup.html

D-Link DCS-4701E 2.00 **Event Management ?**

Event Management Privacy Mask Motion Detection

Media Type

Media name:

Snapshot

Source: ▾

Send pre-event image(s) [0~4]

Send post-event image(s) [0~7]

File Name Prefix:

Add date and time suffix to file name

Video Clip

Source: ▾

Pre-event recording: Second(s) [0~3]

Maximum duration: Second(s) [1~100]

Maximum file size: Kbytes [300~5000]

Copyright ©2018 D-Link Corporation

192.168.0.9/setup.html x

Not secure | 192.168.0.9/setup.html

llya

D-Link DCS-4701E 2.00

Event Management ?

Live video

Setup Wizard

Settings -

Network Settings

Camera Settings

Event Management

Event Management

Advanced Setup +

Camera Info +

Event name:

Enable this event

Priority:

Delay for seconds before detecting next event [For motion detection]

Trigger

Video motion detection

Periodic

Trigger every minutes

System boot

Event Schedule

Sun Mon Tue Wed Thu

Fri Sat

Time

Always

Copyright ©2018 D-Link Corporation

192.168.0.9/setup.html x

Not secure | 192.168.0.9/setup.html

D-Link DCS-4701E 2.00 Event Management ?

Event Management Privacy Mask Motion Detection

Recording

Recording entry name:

Enable this recording

Priority:

Source:

Recording Schedule

Sun Mon Tue Wed Thu Fri Sat

Time

Always

From To

Recording Settings

Copyright ©2018 D-Link Corporation

192.168.0.9/setup.html x

Not secure | 192.168.0.9/setup.html

Live video

Setup Wizard

Settings

Network Settings

Camera Settings

Event Management

Event Management

Advanced Setup +

Camera Info +

D-Link DCS-4701E 2.00

Source: profile 1

Event Management ?

Recording Schedule

Sun Mon Tue Wed Thu Fri Sat

Time

Always

From 00:00 To 23:59

Recording Settings

Destination: None

Total cycling recording size: 1000 Mbytes [200~2000000]

Size of each file for recording: 10 Mbytes

Time of each file for recording: 10 seconds

File Name Prefix:

Save

Copyright ©2018 D-Link Corporation

192.168.0.9/setup.html x

Not secure | 192.168.0.9/setup.html

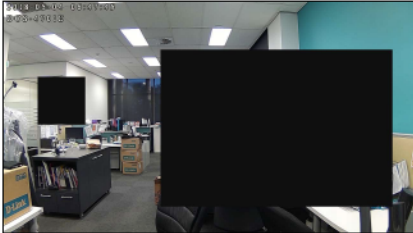
D-Link DCS-4701E 2.00

Privacy Mask ?

Event Management Privacy Mask Motion Detection

Privacy Mask Area of Video Setting

Enable Privacy Mask Setting



- Privacy mask: mask 3 privacy area(s) on video.
- Press the left mouse button, drag and drop to set the privacy
- After you finish all privacy mask settings, click the Save button

Restore all Save

Copyright ©2018 D-Link Corporation

192.168.0.9/setup.html x

Not secure | 192.168.0.9/setup.html


D-Link DCS-4701E 2.00

Motion Detection ?

Event Management Privacy Mask **Motion Detection**

LIVE VIDEO

Enable Video Motion



Sensitivity 0~100%

Percentage 0~100%

Clear all Restore all Select all

Save

Copyright ©2018 D-Link Corporation

Left sidebar menu: Live video, Setup Wizard, Settings, Network Settings, Camera Settings, Event Management (selected), Advanced Setup, Camera Info

192.168.0.9/setup.html x

192.168.0.9/setup.html

Live video

Setup Wizard

Settings +

Advanced Setup -

Advanced

UPnP

DDNS

SNMP

Access List

Camera Configuration

Camera Info +

D-Link DCS-4701E 2.00

UPnP ?

Enable UPnP presentation

Enable UPnP port forwarding

Forwarding Port

Forwarding Status UPnP forwarding is inactive

Save

Copyright ©2018 D-Link Corporation

- Live video
- Setup Wizard
- Settings +
- Advanced Setup -
- Advanced
 - UPnP
 - DDNS**
 - SNMP
 - Access List
- Camera Configuration
- Camera Info +

D-Link DCS-4701E
2.00

DDNS ?

DYNAMIC DNS SETTING

Enable DDNS

Server Address <<

Host Name

User Name

Password

Verify Password

Timeout (hours)

Status Active

Save

192.168.0.9/setup.html x

Not secure | 192.168.0.9/setup.html

D-Link DCS-4701E 2.00

Save and Load Config ?

SYSTEM

Save To Local Hard Drive [Save](#)

Load From Local Hard Drive [Browse...](#) [Upload](#)

- ▶ **Advanced**
- ▼ **Camera Configuration**
 - Save and Load Config**
 - Factory Reset
 - Reboot Device
 - Firmware Update
- ▶ **Camera Info**

Copyright ©2018 D-Link Corporation

192.168.0.9/setup.html x

← → ↻ ⏪ ⏩ ⓘ Not secure | 192.168.0.9/setup.html ☆ ⚙ ⋮

Live video

Setup Wizard

Settings +

Advanced Setup -

▶ **Advanced**

▼ **Camera Configuration**

Save and Load Config

Factory Reset

Reboot Device

Firmware Update

Camera Info +

D-Link DCS-4701E 2.00

Factory Reset ?

SYSTEM

Restore To Factory Defaults **Restore Factory Defaults**

Copyright ©2018 D-Link Corporation

192.168.0.9/setup.html x

Not secure | 192.168.0.9/setup.html

D-Link DCS-4701E 2.00 Reboot Device ?

Reboot

Reboot Device Reboot Device

Enable Schedule Reboot

Sun Mon Tue Wed Thu

Fri Sat

Time : [hh:mm] Save

Save and Load Config

Factory Reset

Reboot Device

Firmware Update

Camera Info

Copyright ©2018 D-Link Corporation

192.168.0.9/setup.html x

Not secure | 192.168.0.9/setup.html

D-Link DCS-4701E
2.00

Firmware Update ?

FIRMWARE INFORMATION

Current Firmware Version: 2.00.03

Current Product Name: DCS-4701E

FIRMWARE UPGRADE

File Path: [Browse...](#) [Upload](#)

Live video

Setup Wizard

Settings +

Advanced Setup -

Advanced

Camera Configuration

Save and Load Config

Factory Reset

Reboot Device

Firmware Update

Camera Info +

Copyright ©2018 D-Link Corporation

192.168.0.9/setup.html x

Not secure | 192.168.0.9/setup.html

D-Link DCS-4701E 2.00 Time Settings ?

TIME CONFIGURATION

Time Zone	(GMT+10:00) Sydney
Enable Daylight Saving	<input type="checkbox"/>
Auto Daylight Saving	<input type="radio"/>
Set date and time manually	<input checked="" type="radio"/>
Offset	+02:00
Start time	Month: 1, Week: 1, Day of week: Sunday, Hour: 0, Minutes: 0
End time	Month: 1, Week: 1, Day of week: Sunday, Hour: 0, Minutes: 0

Copyright ©2018 D-Link Corporation

- Live video
- Setup Wizard
- Settings +
- Advanced Setup +
- Camera Info -
- Camera Info
- Time
 - Time Settings
 - Auto Time Config**
 - Set Date and Time
- Administration Settings
- System Log

D-Link DCS-4701E
2.00

Auto Time Config ?

AUTOMATIC TIME CONFIGURATION

Synchronize with NTP Server

NTP Server

ntp1.dlink.com

<< Select NTP Server ▼
Select NTP Server
ntp1.dlink.com
ntp.dlink.com.tw
Save

192.168.0.9/setup.html x

192.168.0.9/setup.html

Live video

Setup Wizard

Settings +

Advanced Setup +

Camera Info -

Camera Info

Time

Time Settings

Auto Time Config

Set Date and Time

Administration Settings

System Log

D-Link DCS-4701E 2.00

Set Date and Time ?

SET DATE AND TIME MANUALLY

Set date and time manually

time settings copy pc time

Year 2018 Month 5 Day 4

Hour 6 Minute 50 Second 27

Save

Copyright ©2018 D-Link Corporation

192.168.0.9/setup.html x

Not secure | 192.168.0.9/setup.html

D-Link DCS-4701E 2.00 Admin Password ?

ADMIN PASSWORD SETTING

New Password 64 characters maximum

Retype Password

- Live video
- Setup Wizard
- Settings +
- Advanced Setup +
- Camera Info -
- Camera Info
 - Time
 - Administration Settings
 - Admin Password**
 - User Accounts
 - User List
 - System Log

Copyright ©2018 D-Link Corporation

192.168.0.9/setup.html x

Not secure | 192.168.0.9/setup.html

D-Link DCS-4701E 2.00 User Accounts ?

ADD USER ACCOUNT

User Name 17 users maximum

New Password 64 characters maximum

Retype Password

Camera Info

- Time
- Administration Settings
 - Admin Password
 - User Accounts**
 - User List
- System Log

Copyright ©2018 D-Link Corporation

192.168.0.9/setup.html x

Not secure | 192.168.0.9/setup.html

D-Link DCS-4701E 2.00 User List ?

USER LIST

User Name

- Live video
- Setup Wizard
- Settings +
- Advanced Setup +
- Camera Info -
- Camera Info
- Time
- Administration Settings
 - Admin Password
 - User Accounts
 - User List**
- System Log

Copyright ©2018 D-Link Corporation

192.168.0.9/setup.html x

Not secure | 192.168.0.9/setup.html

D-Link DCS-4701E 2.00 System Log ?

- Live video
- Setup Wizard
- Settings +
- Advanced Setup +
- Camera Info -
- Camera Info
 - Time
 - Administration Settings
- System Log**

CURRENT LOG

- 2018/05/04 06:20:07 admin from 192.168.0.150 set motion detection off.
- 2018/05/04 06:19:47 admin from 192.168.0.150 set motion detection on.
- 2018/05/04 06:17:23 admin from 192.168.0.150 Set schedule record 1 ;
Name : Recording1, Turn OFF.
- 2018/05/04 06:16:14 admin from 192.168.0.150 Set event type 1 ;
Trigger : Motion Detection.
- 2018/05/04 06:14:57 admin from 192.168.0.150 Set event media 1 ;
Name : Snap, Type : Snapshot.
- 2018/05/04 06:13:29 admin from 192.168.0.150 Set event server 1 ;
Name : Mail Server, Type : Mail.
- 2018/05/04 06:06:17 admin login Ok from 192.168.0.150

Copyright ©2018 D-Link Corporation

D-ViewCam:

The image shows a screenshot of the D-ViewCam software interface. A dialog box titled "IP Camera / Video Server Setting" is open in the foreground, and the main application window is visible in the background.

IP Camera / Video Server Setting Dialog:

- Network:**
 - Name: DCS-4701E-B1
 - IP Address: 192 . 168 . 0 . 9 DNS
 - Port: 80 HTTPs
 - User Name: admin
 - Password: *****
 - Protocol: TCP UDP HTTP
- Device:**
 - Vendor: D-Link
 - Camera Model: Universal Model
 - Video Channel: 1

Main Application Window:

- Menu: Monitor Display | Joystick
- Video Feed: CAM7 DCS-4701E-B1 (shows an office scene)
- Buttons: Camera Settings, Stream Profile, to Web Interface, Lens Setting, Video Parameter
- Show Video Infos:**
 - Date: 2018/05/08
 - Time: AM11:10:00
 - Camera Number
 - Camera Name
 - Bitrate
 -
- Bottom Buttons:

—	CH08	192.168.0.9	DCS-4701E-B1	Universal Model
---	------	-------------	--------------	-----------------

Camera Name :

Address :

Port :

User Name :

Password :

Vendor :

Model :

Add to Channel :


D-Link®

DNR-2020-04P

2018/05/08 12:44:13

CH08 DCS-4701E-B1 3.52Mbps 16FPS

2018/05/08 12:44:13



Camera List

CH01 DCS-6517	(192.168.2
CH02 DCS-6314	(192.168.2
CH03 DCS-4703E	(192.168.2
CH04 DCS-4603	(192.168.2
CH05 DCS-4622	(192.168.2
CH06 DCS-4802E	(192.168.2
CH07 DCS-7517	(192.168.2
CH08 DCS-4701E-B1	(192.168.0

Optimize Scan Camera

PTZ Control

Go to Preset

Preset Name

Copyright © 2018 D-Link Corporation/D-Link Systems, Inc.



DNR-326 //	LIVE VIDEO	PLAYBACK	SETUP	MAINTENANCE	STATUS	SUPPORT																																																						
<ul style="list-style-type: none"> Wizard Network Setup Camera Search Camera Setup Audio and Video 2nd Stream Settings Live & Playback Setup Recording Schedule Auto-Backup Setup Event Setup E-Mail Setup Time and Date Logout 	<div style="background-color: #f4a460; padding: 5px;">CAMERA SETUP</div> <p>To manually add a camera, enter its IP address.</p> <p> <input type="button" value="Save Settings"/> <input type="button" value="Don't Save Settings"/> </p> <hr/> <div style="background-color: #333; color: white; padding: 5px;">CAMERA SETUP</div> <p>Index Camera 2</p> <table border="1" style="width: 100%; border-collapse: collapse;"> <tr> <td>Camera Name</td> <td colspan="5">DCS-4701E-B1</td> </tr> <tr> <td>Address</td> <td>192.168.0.9</td> <td>Port</td> <td colspan="3">80</td> </tr> <tr> <td>Administrator Name</td> <td>admin</td> <td>Password</td> <td colspan="3">••••••••</td> </tr> <tr> <td>Camera Channel</td> <td>1</td> <td>Protocol</td> <td colspan="3"> <input type="radio"/> TCP <input type="radio"/> UDP <input checked="" type="radio"/> HTTP </td> </tr> <tr> <td>Vendor</td> <td>D-Link</td> <td>Model</td> <td colspan="3">Universal Model</td> </tr> </table> <p> <input type="button" value="Auto Detection"/> <input type="button" value="Clear"/> </p> <hr/> <div style="background-color: #333; color: white; padding: 5px;">CAMERA LIST</div> <table border="1" style="width: 100%; border-collapse: collapse; text-align: center;"> <thead> <tr style="background-color: #add8e6;"> <th>Index</th> <th>Camera Name</th> <th>Address</th> <th>Port</th> <th>Vendor</th> <th>Model</th> </tr> </thead> <tbody> <tr> <td>1</td> <td>WH-CAM1</td> <td>192.168.20.38</td> <td>80</td> <td>D-Link</td> <td>DCS-7513</td> </tr> <tr style="background-color: #4682b4; color: white;"> <td>2</td> <td>DCS-4701E-B1</td> <td>192.168.0.9</td> <td>80</td> <td>D-Link</td> <td>Universal Model</td> </tr> <tr> <td>3</td> <td></td> <td></td> <td>80</td> <td>-- none --</td> <td>-- none --</td> </tr> </tbody> </table>					Camera Name	DCS-4701E-B1					Address	192.168.0.9	Port	80			Administrator Name	admin	Password	••••••••			Camera Channel	1	Protocol	<input type="radio"/> TCP <input type="radio"/> UDP <input checked="" type="radio"/> HTTP			Vendor	D-Link	Model	Universal Model			Index	Camera Name	Address	Port	Vendor	Model	1	WH-CAM1	192.168.20.38	80	D-Link	DCS-7513	2	DCS-4701E-B1	192.168.0.9	80	D-Link	Universal Model	3			80	-- none --	-- none --	<p>Helpful Hints..</p> <p>The following list briefly describes the Camera Setup menu items:</p> <p>Camera Channel: Select the number of analog cameras supported by one video server from the list.</p> <p>Vendor: Displays the manufacturer's name.</p> <p>Auto Detection: Click to automatically detect all the information (such as camera channel, protocol used, vendor, model number) of the camera.</p> <p>Note: Some cameras will limit the login authority to the administrator only.</p>
Camera Name	DCS-4701E-B1																																																											
Address	192.168.0.9	Port	80																																																									
Administrator Name	admin	Password	••••••••																																																									
Camera Channel	1	Protocol	<input type="radio"/> TCP <input type="radio"/> UDP <input checked="" type="radio"/> HTTP																																																									
Vendor	D-Link	Model	Universal Model																																																									
Index	Camera Name	Address	Port	Vendor	Model																																																							
1	WH-CAM1	192.168.20.38	80	D-Link	DCS-7513																																																							
2	DCS-4701E-B1	192.168.0.9	80	D-Link	Universal Model																																																							
3			80	-- none --	-- none --																																																							



DNR-326

LIVE VIDEO

PLAYBACK

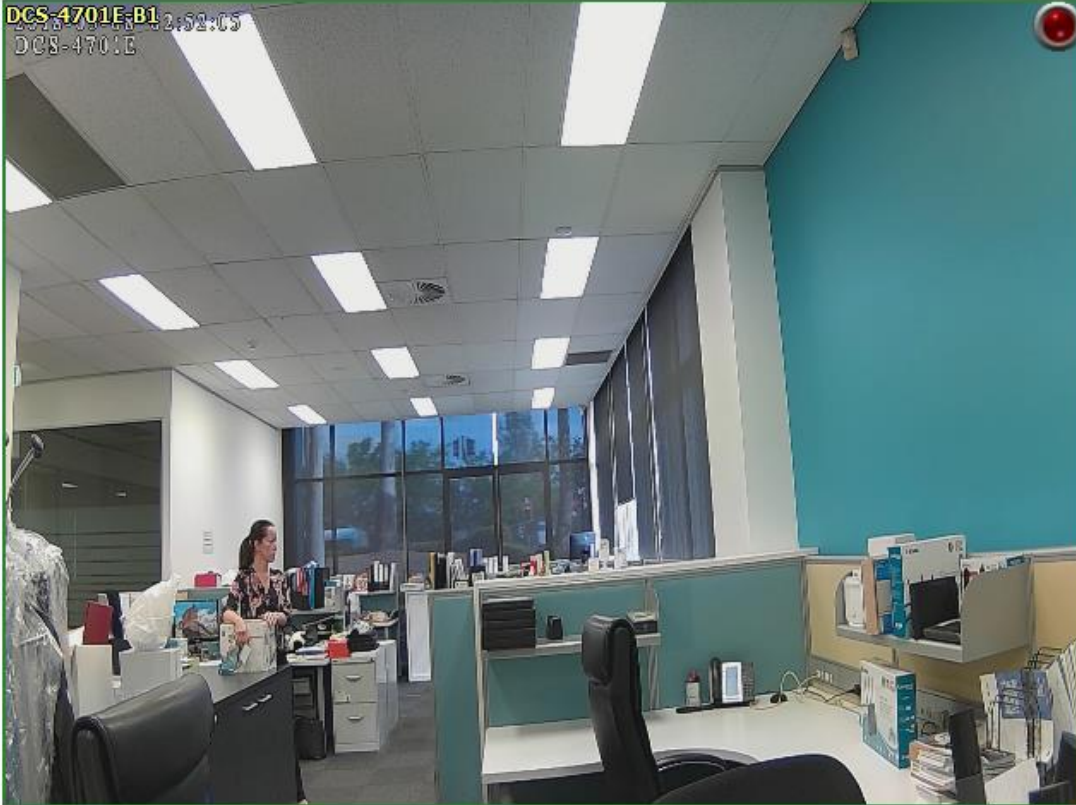
SETUP

MAINTENANCE

STATUS

SUPPORT

DCS-4701E-B1
2018-09-11 12:51:05
DCS-4701E



▶ WH-CAM1_1
▶ DCS-4701E-B1_1



192.168.20.46: DCS-4701E-B

Playing

4140.7 kbps / 4140.7 kbps

NVR