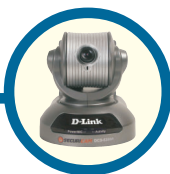


# D-Link

## Quick Installation Guide

This product can be set up using Internet Explorer 5.x or above



**DCS-5300W**  
Wireless Internet Camera  
with Pan and Tilt

## Before You Begin

You must have at least the following:

- Windows XP/2000/ME/98SE
- Wired or Wireless Ethernet Adapter
- CD-ROM Drive

## Check Your Package Contents

These are the items included with your purchase:

If any of the below items are missing, please contact your reseller.



**DCS-5300W** Wireless Internet Camera  
with 2 detachable antennas



One Installation CD (containing Drivers, Software, Quick Installation Guide and Manual)



A/V Cable  
&  
Category 5 Ethernet Cable



Stand & Mounting bracket



12V AC Power  
Adapter



Using a power supply with a different voltage rating will damage this product and void the warranty.

# System Requirements

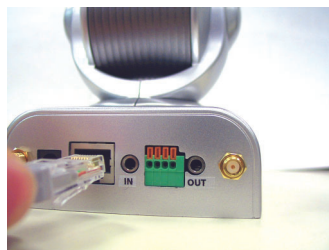
- Internet Explorer 5.x or above
- CPU: Pentium III, 800 MHz or above (Required for use with **IP surveillance** software)
- Memory Size: 128 MB (256 MB recommended)
- VGA card resolution: 800x600 or above

## 1

## Hardware Installation

### Connect the Ethernet Cable

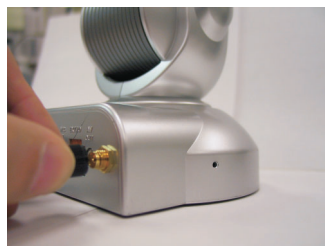
It is recommended that the **DCS-5300W** be connected to an Ethernet cable for initial configuration. Connect one end of the Ethernet cable to the network cable connector located on the Internet Camera's back panel and attach the other end to a router, switch, or gateway on the network.



If you connect this camera directly to a PC, you will need a cross-over Ethernet cable. If you plug the camera into a hub or router, you will be able to use the cable included with your camera.

### Attach the Antennas to the Camera

If you will be using the **DCS-5300W** in a wireless network, attach the antennas to the back of the camera by turning the antennas in the clockwise direction until snug, do not over tighten.



# 1

## Hardware Installation (continued)

### Attach the External Power Supply

Attach the external power supply to the DC power input connector located on the Internet Camera's backpanel (labeled DC 12V) and connect it to an AC power outlet.



When you have a proper connection, the **LED** (Light Emitting Diode) on the front of the camera will change from red to green. The light may blink on and off and your computer may show an intermittent loss of connectivity, this is normal until you have configured your camera.



Power source is confirmed when the LED Power Indicator on the Internet Camera is illuminated.

Attach the A/V cable to the A/V out connector if you wish to connect the **DCS-5300W** to your TV set.



Attach the red RCA connector to the "video" connector on your TV



# 2

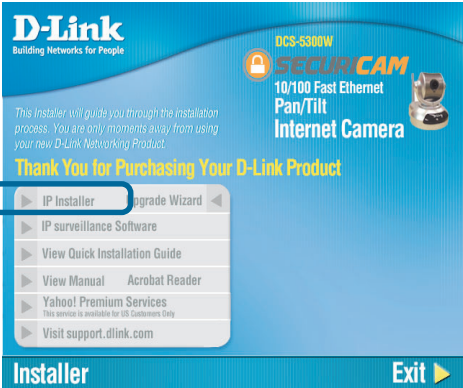
## Configuring your camera with IP Installer

Attach the black RCA cable to the “audio” connector on your TV set.



Insert the **DCS-5300W** CD into the CD-ROM drive of your PC.

Click on **IP Installer**



This is the first screen that will appear.



# 2

## Configuring your camera with IP Installer (continued)

If the **IP Installer** does not display any devices, you will need to find a tool small enough to fit into the reset hole and softly press down a switch for 2 cycles (the red and green LEDs will blink continuously and stop twice). Let go when the red LED starts to flash the second time.



The **IP Installer** will now show a MAC address of the **DCS-5300W** and an IP Address (which may or may not be correct depending on what you have your **DCS-5300W** connected to.) If you have a DHCP\* server on your network, there will be a valid IP Address displayed here. After a few seconds, the “assigned” column will display **yes**, indicating that the displayed IP Address is now assigned to the camera.



**!** \* A DHCP server is a device that supplies IP Addresses to its clients that are on the same network

Highlight the MAC address

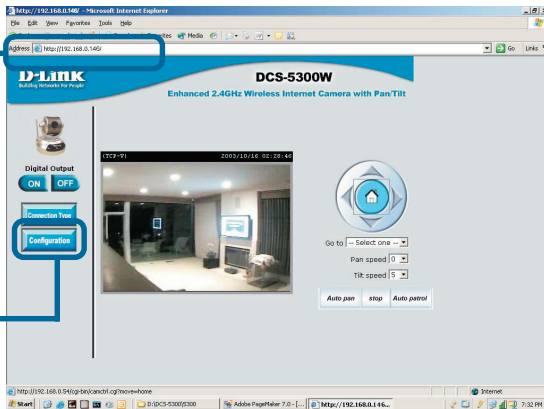


Click on the **Link** button

# 2

## Configuring your camera with IP Installer (continued)

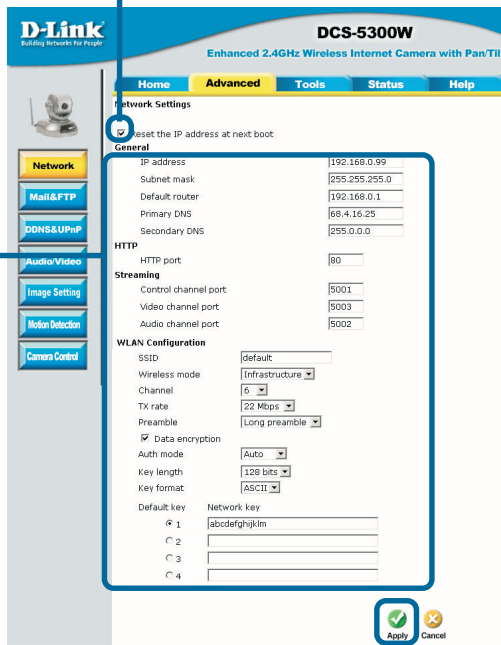
After you click on the **Link** button, **IP Installer** will automatically open your Internet browser to the IP Address of the **DCS-5300W**, in this example it is: `http://192.168.0.146`. Your **DCS-5300W** may have a different IP Address.



Click on **Configuration** to set up your wireless settings for the **DCS-5300W** to be consistent with your network.

Leave the box titled **This camera can be found by installer whenever it starts up** unchecked to avoid running this install application each time you boot up the **DCS-5300W**. Check this box if you need to change IP address the next time the **DCS-5300W** boots up.

If you have a DHCP server on your network, you will already have a valid IP Address in these fields. If you will be using the **DCS-5300W** in a wireless network, the following page explains the importance of each field and what is required for you to be able to connect to your network. If you do not have a DHCP server on your network, fill out your **IP Address**, **Subnet mask**, **Gateway** and at least 1 **DNS IP Address** respectively on this page. If you do not know what to put in these fields, please contact your System Administrator or your Internet Service Provider.



Click **Apply**

# 2

## Configuring your camera with IP Installer (continued)

### Setting up your wireless configuration for the DCS-5300W

The **DCS-5300W** is pre-configured to connect to any D-Link wireless routers and adapters by default. If the settings are changed on the other devices, then the **DCS-5300W** will need to be configured to match those settings also.

Type in your SSID and Connection type consistent with your network. (If you are unsure, please contact your network administrator).

If you have an access point, choose Infrastructure, or Ad Hoc if you will be connecting your **DCS-5300W** directly to your PC

Choose the channel that is the same as your other wireless devices that you would like to connect to, although this is not very critical if you have the rest of your configuration correct. The **DCS-5300W** will automatically insert the correct channel for you.

You can choose different transmission rates to apply if you need to restrict the camera's bandwidth.

**Preamble Type-** select Short or Long Preamble. The Preamble Type defines the length of the CRC (Cyclic Redundancy Check) block for communication between the **DCS-5300W** and roaming wireless adapters. Please see the manual for details.

You can enable encryption here (up to 256-bit). Once you have filled the encryption box (only one needs to be filled if you will not be using the camera in another network with different encryption), check the **Data encryption** box. 16-bit requires 10 hex, or 5 ASCII characters 128-bit requires 26 hex, or 13 ASCII characters 256-bit requires 58 hex, or 29 ASCII characters.

**D-Link**  
Solving Wireless Network Problems

**DCS-5300W**  
Enhanced 2.4GHz Wireless Internet Camera with Pan/Tilt

Home Advanced Tools Status Help

**Network Settings**

☒ Reset the IP address at next boot

**General**

IP address: 192.168.0.99  
Subnet mask: 255.255.255.0  
Default router: 192.168.0.1  
Primary DNS: 88.4.13.25  
Secondary DNS: 255.0.0.0

**HTTP**

HTTP port: 80

**Streaming**

Control channel port: 8001  
Video channel port: 8003  
Audio channel port: 8002

**Wireless Configuration**

SSID: Default  
Wireless mode: Infrastructure  
Channel: 6  
Tx Rate: 54 Mbps  
Preamble: Long preamble

☒ Data encryption

Auth mode: Auto  
Key length: 128 bits  
Key format: ASCII

Default key: # 1: abcdefghijklm  
# 2:  
# 3:  
# 4:

Network key:  
# 1:  
# 2:  
# 3:  
# 4:

Apply Cancel

Click **Next**

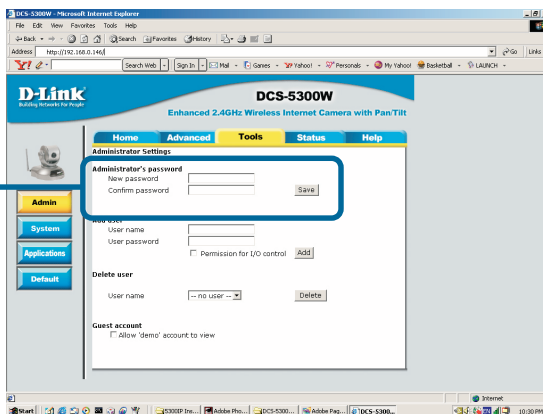


# 3

## Viewing Your Internet Camera

At this point, we highly recommend that you click on **Configuration >Tools >** and then **Admin** from the Home page to set up a password for security purposes.

Enter the administrative password. Click **Save** then “X” at the top right-hand corner of your browser to close the page.



**Switching to wireless mode** - To switch to wireless mode, simply disconnect the Ethernet cable and reboot the **DCS-5300W** by removing and reconnecting the power supply either from the back of the unit or from the wall power outlet.

**The installation and configuration of the DCS-5300W Internet Camera is now complete.**



**NOTES:**

# Technical Support

You can find software updates and user documentation on the D-Link website.

D-Link provides free technical support for customers within the United States and within Canada for the duration of the warranty period on this product.

U.S. and Canadian customers can contact D-Link Technical Support through our website, or by phone.

## Tech Support for customers within the United States:

### ***D-Link Technical Support over the Telephone:***

(877) 453-5465

24 hours a day, seven days a week.

### ***D-Link Technical Support over the Internet:***

<http://support.dlink.com>

[email:support@dlink.com](mailto:support@dlink.com)

## Tech Support for customers within Canada:

### ***D-Link Technical Support over the Telephone:***

(800) 361-5265

Monday to Friday 8:30am to 9:00pm EST

### ***D-Link Technical Support over the Internet:***

<http://support.dlink.ca>

[email:support@dlink.ca](mailto:support@dlink.ca)

