

DCS-7517 rev.B

FW 2.00

D-Link DCS-7517
v2.00

Select Language: English

For security, it is recommended to change the password for your administrator account.

New Password:

Confirm New Password:

Save

Copyright @2016 D-Link Corporation

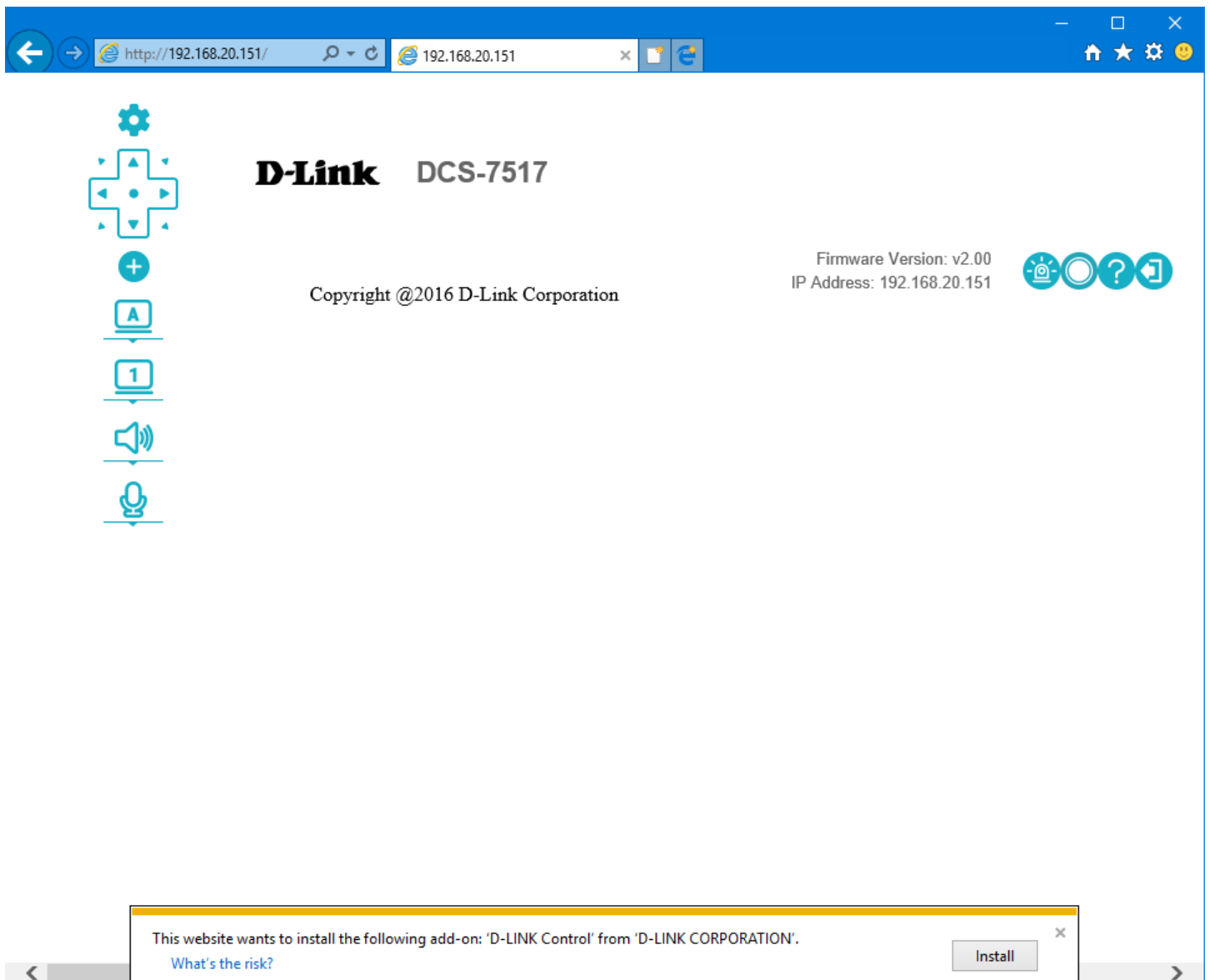
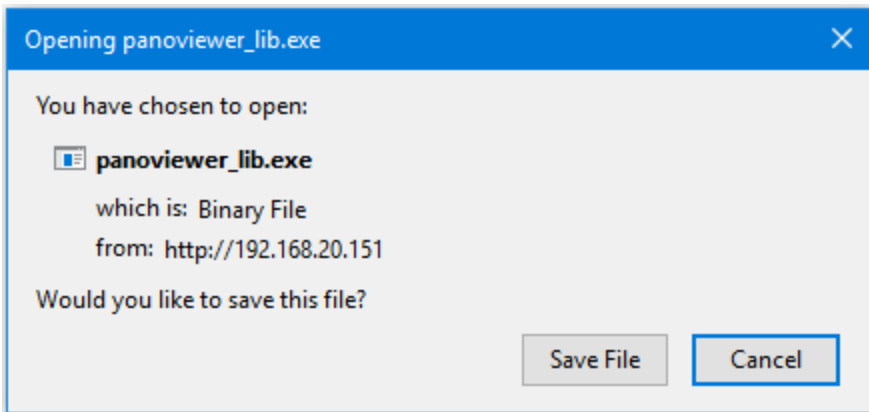
192.168.20.151

Not secure | 192.168.20.151

192.168.20.151 says:

The browser plug-in (PanoViewer) needed to view your camera's live view, is not running or not installed.nPress OK to download.

OK Cancel



D-Link DCS-7517
v2.00

Select Language: English

Password:

Login

[Administrator](#) | [Other User](#)



D-Link DCS-7517

Firmware Version: v2.00
IP Address: 192.168.20.151



Browser: http://192.168.20.151/ | 192.168.20.151

D-Link DCS-7517 v2.00 Setup Wizard ?

- Live Video
- Setup Wizard**
- Settings +
- Advanced Setup +
- Camera Options +

Network Setup Wizard

Use the Network Setup Wizard to configure the network settings on your Camera. Advanced users can configure additional network options in the Settings menu.

[Network Setup Wizard](#)

Motion Detection Setup

Use this wizard to configure Motion Detection and what actions the Camera should perform when motion is detected. Experienced users can configure additional options in the Settings > Recording Management > Event Management menu.

[Motion Detection Setup Wizard](#)

Browser: http://192.168.20.151/ | 192.168.20.151

D-Link DCS-7517 v2.00 LAN Settings ?

- Live Video
- Setup Wizard
- Settings -**
- Network Settings
 - LAN Settings**
 - IPv6
 - PPPoE
 - HTTP and HTTPS
 - RTSP and Multicast
 - Bonjour
- Camera Settings
- Recording Management
- Advanced Setup +
- Camera Options +

LAN Settings

DHCP

Static IP Client

IP Address	192	168	20	151
Subnet Mask	255	255	255	0
Default Router	192	168	20	254
Primary DNS	192	168	0	249
Secondary DNS	192	168	0	243

[Save](#)

Live Video

Setup Wizard

Settings

Network Settings

LAN Settings

IPv6

PPPoE

HTTP and HTTPS

RTSP and Multicast

Bonjour

Camera Settings

Recording Management

Advanced Setup

Camera Options

D-Link DCS-7517 v2.00

IPv6 ?

IPv6

IPv6

Information

Manually Set the IP Address

Optional IP Address / Prefix Length /

Optional Default Gateway

Optional Primary DNS

Save

Live Video

Setup Wizard

Settings

Network Settings

LAN Settings

IPv6

PPPoE

HTTP and HTTPS

RTSP and Multicast

Bonjour

Camera Settings

Recording Management

Advanced Setup

Camera Options

D-Link DCS-7517 v2.00

HTTP ?

HTTP

HTTPS

HTTP

Stream Authentication

HTTP Port

Access Name for Stream1

Access Name for Stream2

Access Name for Stream3

Save

Live Video

Setup Wizard

Settings

Network Settings

LAN Settings

IPv6

PPPoE

HTTP and HTTPS

RTSP and Multicast

Bonjour

Camera Settings

Recording Management

Advanced Setup

Camera Options



DCS-7517
v2.00

HTTP ?

HTTP

HTTPS

HTTP

Stream Authentication

HTTP Port

Access Name for Stream1

Access Name for Stream2

Access Name for Stream3

Save

- Live Video
- Setup Wizard
- Settings -
- Network Settings
 - LAN Settings
 - IPv6
 - PPPoE
 - HTTP and HTTPS
 - RTSP and Multicast**
 - Bonjour
- Camera Settings
- Recording Management
- Advanced Setup +
- Camera Options +

RTSP Multicast

RTSP

Authentication	<input type="text" value="None"/> <input checked="" type="text" value="Basic"/> <input type="text" value="Digest"/>
RTSP Port	<input type="text" value="554"/>
Access Name for Stream1	<input type="text" value="live1.sdp"/>
Access Name for Stream2	<input type="text" value="live2.sdp"/>
Access Name for Stream3	<input type="text" value="live3.sdp"/>

Save

- Live Video
- Setup Wizard
- Settings
 - Network Settings
 - LAN Settings
 - IPv6
 - PPPoE
 - HTTP and HTTPS
 - RTSP and Multicast**
 - Bonjour
 - Camera Settings
 - Recording Management
- Advanced Setup +
- Camera Options +

RTSP Multicast

Multicast

Multicast for Stream 1	<input type="checkbox"/>
Multicast Group Address Video	239.1.1.1
Multicast Group Address Audio	239.1.1.1
Multicast Video Port	6550
Multicast RTCP Video Port	6551
Multicast Audio Port	6552
Multicast RTCP Audio Port	6553
Multicast TTL [1~255]	64
Multicast for Stream 2	<input type="checkbox"/>
Multicast Group Address Video	239.1.1.2
Multicast Group Address Audio	239.1.1.2
Multicast Video Port	6554
Multicast RTCP Video Port	6555
Multicast Audio Port	6556
Multicast RTCP Audio Port	6557
Multicast TTL [1~255]	64
Multicast for Stream 3	<input type="checkbox"/>

- Live Video
- Setup Wizard
- Settings -
- Network Settings
 - LAN Settings
 - IPv6
 - PPPoE
 - HTTP and HTTPS
 - RTSP and Multicast
 - Bonjour**
- Camera Settings
- Recording Management
- Advanced Setup +
- Camera Options +

Bonjour

Bonjour

Bonjour Name 32 characters maximum

(Characters you may use in a Bonjour Name: "upper or lower case letters", "numbers" and "hyphens".)

Save

- Live Video
- Setup Wizard
- Settings -
- Network Settings
- Camera Settings**
 - Camera Settings**
 - Image and Audio Settings
 - Video Stream
 - Preset Point
- Recording Management
- Advanced Setup +
- Camera Options +

Camera Settings

Camera Name 32 characters maximum

Indicator LED

Indicator LED

Save

Live Video

Setup Wizard

Settings

Network Settings

Camera Settings

Camera Settings

Image and Audio Settings

Video Stream

Preset Point

Recording Management

Advanced Setup

Camera Options

D-Link DCS-7517 v2.00

Image and Audio Settings ?

Image & Audio

IR and ICR

Lens Control

OSD Settings

Live Video



Image Settings

Mirror

Flip

DIS

Anti-Flicker 60 Hz 50 Hz

White Balance

Exposure Mode Max Gain 30 dB

- Auto Iris
- Denoise
- 3D Denoise
- Hue
- Brightness
- Contrast
- Saturation
- Sharpness
- WDR Level

Reset

Image Settings(Night Mode)

- Night Mode
- This profile is applied to Night Mode. From 18:00 To 06:00
- Exposure Mode Max Gain dB
- Auto Iris
- Denoise
- 3DDenoise
- 3DDenoise
- Brightness
- Contrast
- Saturation
- Sharpness

Save

Audio Settings

- Audio In Gain Level
- Audio Out Volume Level

Save

Browser: http://192.168.20.151/ | 192.168.20.151

D-Link DCS-7517 v2.00 IR and ICR ?

Image & Audio | **IR and ICR** | Lens Control | OSD Settings

ICR

Removable IR-Cut Filter Trigger Condition:

Automatic Sensitivity: over 30 lux

Day Mode

Night Mode

Schedule Mode

Day Mode(24hr)

From To


Disable IR LED

Browser: http://192.168.20.151/ | 192.168.20.151

D-Link DCS-7517 v2.00 Lens Control ?

Image & Audio | IR and ICR | **Lens Control** | OSD Settings

Lens Control



Focus Mode :

Lens Zoom Speed :

Zoom :

Live Video

Setup Wizard

Settings -

Network Settings

Camera Settings

Camera Settings

Image and Audio Settings

Video Stream

Preset Point

Recording Management

Advanced Setup +

Camera Options +

D-Link DCS-7517 v2.00

OSD Settings ?

Image & Audio

IR and ICR

Lens Control

OSD Settings

OSD Settings

OSD

Label 32 characters maximum

Show Time

Save

- Live Video
- Setup Wizard
- Settings -
- Network Settings
- Camera Settings
 - Camera Settings
 - Image and Audio Settings
 - Video Stream**
 - Preset Point
- Recording Management
- Advanced Setup +
- Camera Options +

Video Settings

Number of Active Profiles

Aspect Ratio

Warning: Changing the aspect ratio will clear all privacy mask, motion detection and preset settings.

Save

Video Profile 1

Mode

Frame Size

View Window Area

Maximum Frame Rate

Rate Control

Constant Bit Rate

Max Bit Rate **K bps [1024 ~ 20000]**

Fixed Quality

Intra frame period

Video Profile 2

Video Profile 1

Mode	<div style="border: 1px solid black; padding: 2px;"><div style="background-color: #f0f0f0; padding: 2px;">MJPEG</div><div style="background-color: #f0f0f0; padding: 2px;">H.265</div><div style="background-color: #0070c0; color: white; padding: 2px;">H.264</div></div>
Frame Size	<div style="border: 1px solid #0070c0; padding: 2px; display: inline-block;">2592x1944</div> ▼
View Window Area	<div style="border: 1px solid #0070c0; padding: 2px; display: inline-block;">2592x1944</div> ▼
Maximum Frame Rate	<div style="display: flex; align-items: center;"><div style="flex-grow: 1;"><div style="background-color: #0070c0; width: 100%; height: 10px; position: relative;"><div style="background-color: white; width: 50%; height: 10px; position: absolute; left: 0;"></div></div></div><div style="border: 1px solid #0070c0; padding: 2px; margin-left: 10px;">25</div></div>
Rate Control	<div style="border: 1px solid #0070c0; padding: 2px; display: inline-block;">CVBR</div> ▼
Constant Bit Rate	<div style="border: 1px solid #ccc; padding: 2px; background-color: #f0f0f0;">10000</div>
Max Bit Rate	<div style="border: 1px solid #0070c0; padding: 2px; display: inline-block;">10000</div> K bps [1024 ~ 20000]
Fixed Quality	<div style="border: 1px solid #0070c0; padding: 2px; display: inline-block;">Good</div> ▼
Intra frame period	<div style="border: 1px solid #0070c0; padding: 2px; display: inline-block;">1 S</div> ▼

Video Profile 1

Mode	<div style="border: 1px solid #0070c0; padding: 2px; display: inline-block;">H.264</div> ▼
Frame Size	<div style="border: 1px solid black; padding: 2px;"><div style="background-color: #0070c0; color: white; padding: 2px;">2592x1944</div><div style="background-color: #f0f0f0; padding: 2px;">2560x1920</div><div style="background-color: #f0f0f0; padding: 2px;">1280x960</div><div style="background-color: #f0f0f0; padding: 2px;">800x600</div><div style="background-color: #f0f0f0; padding: 2px;">640x480</div><div style="background-color: #f0f0f0; padding: 2px;">320x240</div></div>
View Window Area	
Maximum Frame Rate	<div style="display: flex; align-items: center;"><div style="flex-grow: 1;"><div style="background-color: #0070c0; width: 100%; height: 10px; position: relative;"><div style="background-color: white; width: 50%; height: 10px; position: absolute; left: 0;"></div></div></div><div style="border: 1px solid #0070c0; padding: 2px; margin-left: 10px;">25</div></div>
Rate Control	<div style="border: 1px solid #0070c0; padding: 2px; display: inline-block;">CVBR</div> ▼
Constant Bit Rate	<div style="border: 1px solid #ccc; padding: 2px; background-color: #f0f0f0;">10000</div>
Max Bit Rate	<div style="border: 1px solid #0070c0; padding: 2px; display: inline-block;">10000</div> K bps [1024 ~ 20000]
Fixed Quality	<div style="border: 1px solid #0070c0; padding: 2px; display: inline-block;">Good</div> ▼
Intra frame period	<div style="border: 1px solid #0070c0; padding: 2px; display: inline-block;">1 S</div> ▼

Video Profile 1

Mode	<input type="text" value="H.264"/>
Frame Size	<input type="text" value="2592x1944"/>
View Window Area	<input type="text" value="2592x1944"/>
Maximum Frame Rate	<input type="range" value="25"/>
Rate Control	<input type="text" value="VBR"/> <input type="text" value="CBR"/> <input checked="" type="text" value="CVBR"/>
Constant Bit Rate	<input type="text" value="10000"/>
Max Bit Rate	<input type="text" value="10000"/> K bps [1024 ~ 20000]
Fixed Quality	<input type="text" value="Good"/>
Intra frame period	<input type="text" value="1 S"/>

Video Profile 1

Mode	<input type="text" value="H.264"/>
Frame Size	<input type="text" value="2592x1944"/>
View Window Area	<input type="text" value="2592x1944"/>
Maximum Frame Rate	<input type="range" value="25"/>
Rate Control	<input checked="" type="text" value="CVBR"/> <input type="text" value="VBR"/> <input type="text" value="CBR"/>
Constant Bit Rate	<input type="text" value="10000"/>
Max Bit Rate	<input type="text" value="10000"/> K bps [1024 ~ 20000]
Fixed Quality	<input type="text" value="Standard"/> <input checked="" type="text" value="Good"/> <input type="text" value="Excellent"/>
Intra frame period	<input type="text" value="1 S"/>

Video Settings

Number of Active Profiles

Aspect Ratio

Warning: Changing the aspect ratio will clear all privacy mask, motion detection and preset settings.

Save

Video Profile 1

Mode

Frame Size

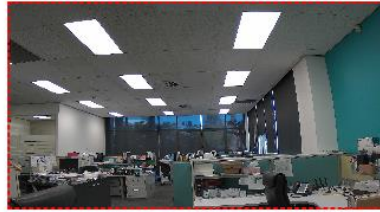
1920x1080
1280x720
640x360
320x180

View Window Area

Maximum Frame Rate

- Live Video
- Setup Wizard
- Settings
 - Network Settings
 - Camera Settings
 - Camera Settings
 - Image and Audio Settings
 - Video Stream
 - Preset Point**
- Recording Management
- Advanced Setup
- Camera Options

Preset Control



Video Profile : 1

ePTZ Speed : 5

Preset

Input Preset Name :

Support(0-9,A-Z,a-z,-,*,/,_)

Preset List :

Preset Sequence

Preset Name : Dwell Time



Preset List :

Dwell Time :

Second(s)[3~30]

- Live Video

- Setup Wizard

- Settings -

- Network Settings

- Camera Settings

- Recording Management

- Event Management

- Advanced Setup +

- Camera Options +

- Event MGMT
- SD Card
- Privacy Mask
- Motion
- Tamper

Event Setup

There are four sections in the Event Setup page. These are event, server, media and recording. Click Add to add a new item to event, server, media or recording. Click Delete to delete the selected item from event, server, media or recording. Click on the item name to pop a window to edit it. There can be a maximum of 3 events and 2 recording. There can be a maximum of 8 server and 5 media configurations.

Server		
Server Address	Type	Address/Location
Camera	SD card	
Sto..		
My NAS	Network storage	\\192.168.0.100\camera1
My Mail	Email	mail.company.com
My FTP	Ftp	ftp.company.com

Add
Camera Storage
▼
Delete

Media		
Server Address	Type	Source
Snapshot	Snapshot	Profile 1
Video	Video clip	Profile 1

Add
Snapshot
▼
Delete

Event Settings										
Server Address	Status	Sun	Mon	Tue	Wed	Thu	Fri	Sat	Time	Trigger
Motion	ON	V	V	V	V	V	V	V	00:00~23:59	Motion

Add
Motion
▼
Delete

Record											
Server Address	Status	Sun	Mon	Tue	Wed	Thu	Fri	Sat	Time	Source	Destination
Recording	OFF	V	V	V	V	V	V	V	00:00~23:59	Profile 1	SAMBA

Add
Recording
▼
Delete

Server Type

Server Name:

Email

Sender's Email Address

Recipient Email Address

Server Address

User Name

Password

Port

StartTLS

FTP

Server Address

Port

Login Type

User Name

Password

Remote Folder Name

Passive Mode

Network Storage

Network Storage Location

(for example:my_nasdisk older)

Workgroup

User Name

Password

Primary WINS Server

Keep Free Space: MB (minimum is 200 MB)

Cyclic

SD Card

Keep Free Space: MB (minimum is 200 MB)

Cyclic

Media

Server Address	Type	Source
Snapshot	Snapshot	Profile 1
Video	Video clip	Profile 1

Media Type

Media Name:

Snapshot

Source: 

Send Pre-Event Image(s) [0~4]

Send Post-Event Image(s) [0~7]

File Name Prefix:

Add Date and Time Suffix to File Name

Video Clip

Source: 

Pre-Event Recording: Second(s) [0~4]

Maximum Duration: Second(s) [1~100]

Maximum File Size: Kbytes [100~15000]

File Name Prefix:

Camera Log

Save

Event Settings

Server Address	Status	Sun	Mon	Tue	Wed	Thu	Fri	Sat	Time	Trigger
Motion	ON	V	V	V	V	V	V	V	00:00~23:59	Motion
<input type="button" value="Add"/>	<input type="text" value="Motion"/>	<input type="button" value="v"/>	<input type="button" value="v"/>	<input type="button" value="v"/>	<input type="button" value="v"/>	<input type="button" value="v"/>	<input type="button" value="v"/>	<input type="button" value="v"/>		<input type="button" value="Delete"/>

Event

Event Name:

Enable This Event

Priority: ▼

Delay for seconds before detecting next event [For motion detection and digital input]

Trigger

Video Motion Detection

Periodic

Trigger Every minutes

Digital Input

Camera Boot

Network Lost

Tamper Detection

Event Schedule

Sun Mon Tue Wed Thu Fri Sat

Time

Always

From ▼ ▼ To ▼ ▼

Action

Trigger DI/O for Seconds

Camera Storage

Attached media: 

My NAS

Attached media: 

My Mail

Attached media: 

My FTP

Attached media: 

Save

Record

Server Address	Status	Sun	Mon	Tue	Wed	Thu	Fri	Sat	Time	Source	Destination
Recording	OFF	V	V	V	V	V	V	V	00:00~23:59	Profile 1	SAMBA

Add



Delete

Recording

Recording Entry Name:

Enable This Recording

Priority:

Source:

Recording Schedule

Sun Mon Tue Wed Thu Fri Sat

Time

Always

From To

Recording Settings

Destination

Size of Each File for Recording: Mbytes

Time of Each File for Recording: Seconds

File Name Prefix:

Save

- Live Video
- Setup Wizard
- Settings -
 - Network Settings
 - Camera Settings
 - Recording Management
 - Event Management**
 - Advanced Setup +
 - Camera Options +

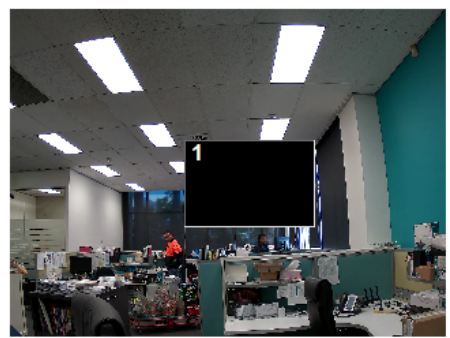
D-Link DCS-7517 v2.00

Privacy Mask ?

- Event MGMT
- SD Card
- Privacy Mask**
- Motion
- Tamper

Privacy Mask Settings

Privacy Mask Settings



1 2 3

- Add
- Delete
- Save

- Live Video
- Setup Wizard
- Settings -
 - Network Settings
 - Camera Settings
 - Recording Management
 - Event Management
 - Advanced Setup +**
 - Camera Options +

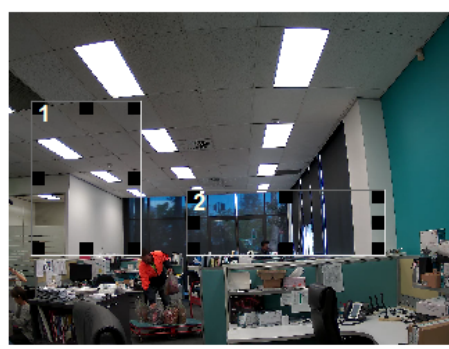
D-Link DCS-7517 v2.00

Motion Detection ?

- Event MGMT
- SD Card
- Privacy Mask
- Motion**
- Tamper

Motion Detection Setting

Motion Detection Setting



Percentage ▾

Sensitivity ▾

1 2 3

- Add
- Delete
- Save

Live Video

Setup Wizard

Settings -

Network Settings

Camera Settings

Recording Management

Event Management

Advanced Setup +

Camera Options +

D-Link DCS-7517 v2.00

Tamper Detection ?

Event MGMT

SD Card

Privacy Mask

Motion

Tamper

Tamper Detection Settings

Tamper Detection

Trigger Duration 10 Seconds [0 ~ 20]

Save

Live Video

Setup Wizard

Settings +

Advanced Setup -

Advanced

UPnP

DDNS

SNMP

802.1x

CoS and QoS

Access List

Camera Configuration

DI and DO

Camera Options +

UPnP

- UPnP Presentation
- UPnP Port forwarding
- forwarding Port
- forwarding Status UPnP forwarding is inactive

Save

Live Video

Setup Wizard

Settings +

Advanced Setup -

Advanced

UPnP

DDNS

SNMP

802.1x

CoS and QoS

Access List

Camera Configuration

DI and DO

Camera Options +

DDNS

DDNS

Server Address

Input Dynamic DNS Server
www.dlinkddns.com
www.DynDNS.org

Host Name

User Name

Password

Verify Password

Timeout (hours)

Status Active

Save

Live Video

Setup Wizard

Settings +

Advanced Setup -

Advanced

UPnP

DDNS

SNMP

802.1x

CoS and QoS

Access List

Camera Configuration

DI and DO

Camera Options +

SNMP Configuration

Enable SNMPv1, SNMPv2c	<input type="checkbox"/>
Read/Write Community	<input type="text" value="write_31EFC2"/>
Read-Only Community	<input type="text" value="public_31EFC2"/>
Enable SNMPv3	<input type="checkbox"/>
Read/Write Security Name	<input type="text"/>
Authentication Type	<input type="text" value="MD5"/>
Authentication Password	<input type="text"/>
Encryption Password	<input type="text"/>
Read Only Security Name	<input type="text"/>
Authentication Type	<input type="text" value="MD5"/>
Authentication Password	<input type="text"/>
Encryption Password	<input type="text"/>
Traps	<input type="checkbox"/>
Trap address	<input type="text"/>
Trap community	<input type="text"/>
Trap address 2	<input type="text"/>
Trap community 2	<input type="text"/>

Live Video

Setup Wizard

Settings +

Advanced Setup -

Advanced

UPnP

DDNS

SNMP

802.1x

CoS and QoS

Access List

Camera Configuration

DI and DO

Camera Options +

IEEE 802.1x

IEEE 802.1X

EAP Type

Identity

Password

CA Certificate

Status no file

Live Video

Setup Wizard

Settings +

Advanced Setup -

Advanced

UPnP

DDNS

SNMP

802.1x

CoS and QoS

Access List

Camera Configuration

DI and DO

Camera Options +

CoS Settings

CoS

VLAN ID [0~4095]

Live Video

Live Audio

Event/Alarm

Management

QoS Settings

QoS

Live Video

Live Audio

Event/Alarm

Management

Save

Live Video

Setup Wizard

Settings +

Advanced Setup -

Advanced

UPnP

DDNS

SNMP

802.1x

CoS and QoS

Access List

Camera Configuration

DI and DO

Camera Options +

Allow List

Start IP Address

End IP Address

Delete Allow List

Deny List

Start IP Address

End IP Address

Delete Deny List

Live Video

Setup Wizard

Settings +

Advanced Setup -

Advanced

Camera Configuration

Save and Load Config

Factory Reset

Reboot Device

Firmware Update

DI and DO

Camera Options +

D-Link DCS-7517 v2.00

Save and Load Configuration ?

Save and Load Configuration

Save to Local Hard Drive

Save

Load from Local Hard Drive

Browse

Upload

Live Video

Setup Wizard

Settings +

Advanced Setup -

Advanced

Camera Configuration

Save and Load Config

Factory Reset

Reboot Device

Firmware Update

DI and DO

Camera Options +

D-Link DCS-7517 v2.00

Factory Reset ?

Factory Reset

Keep Network Setting

Restore to Factory Default

- Live Video
- Setup Wizard
- Settings +
- Advanced Setup -
- Advanced
- Camera Configuration
 - Save and Load Config
 - Factory Reset
 - Reboot Device**
 - Firmware Update
- DI and DO
- Camera Options +

Reboot Device

Reboot Camera

Schedule Reboot

Sun Mon Tue Wed Thu Fri Sat

Time Reboot

Live Video

Setup Wizard

Settings +

Advanced Setup -

Advanced

Camera Configuration

Save and Load Config

Factory Reset

Reboot Device

Firmware Update

DI and DO

Camera Options +

Firmware Update

File Path:

Browse

Upload

Live Video

Setup Wizard

Settings +

Advanced Setup -

Advanced

Camera Configuration

DI and DO

Camera Options +

DI and DO

Digital Input:

The active state is ; the current state detected is **Normal Close**

Digital Output:

The active state is ; the current state detected is **Normal Close**

Save

Live Video

Setup Wizard

Settings +

Advanced Setup +

Camera Options -

Camera Info

Time

Administration Settings

Camera Log

D-Link DCS-7517 v2.00

Camera Info ?

Camera Information

IP Address	192.168.20.151
Link Local Address	169.254.102.193
PPPoE Address	
Camera Name	DCS-7517
Firmware Version	v2.00.03
Firmware Date	Thu, 13 Jul 2017 10:33:53 GMT
MAC Address	B0:C5:54:31:EF:C2
Hardware Version	B
Connected Client(s)	0

Time & Date

Time & Date Tue,01 Aug 2017 08:36:39 GMT

Service Status

Service	Enable/Disable	Protocol	Server Port
HTTP	Enable	TCP	80
Secondary HTTP	Disable	TCP	-
HTTPS	Disable	TCP	443
RTSP	Enable	TCP	554
UPnP Presentation	Enable	-	-

← → http://192.168.20.151/ 192.168.20.151

D-Link DCS-7517 v2.00 Time Settings ?

Time Settings

Time Zone: (GMT+10:00) Canberra, Melbourne, Sydney

Daylight Saving:

Offset: +01:00

Day of the Week	Week	Month	Hour	Minutes	Second
Start Time: Sunday	1	1	00	00	00
End Time: Sunday	1	1	00	00	00

Save

Navigation: Live Video, Setup Wizard, Settings, Advanced Setup, Camera Options, Camera Info, Time (Time Settings, Auto Time Config, Set Date and Time), Administration Settings, Camera Log

← → http://192.168.20.151/ 192.168.20.151

D-Link DCS-7517 v2.00 Automatic Time Configuration ?

Automatic Time

NTP Server:

NTP Server: ntp.dlink.com.tw << **Select NTP Server**
ntp1.dlink.com
ntp.dlink.com.tw

Save

Navigation: Live Video, Setup Wizard, Settings, Advanced Setup, Camera Options, Camera Info, Time (Time Settings, **Auto Time Config**, Set Date and Time), Administration Settings, Camera Log

Live Video

Setup Wizard

Settings +

Advanced Setup +

Camera Options -

Camera Info

Time

Time Settings

Auto Time Config

Set Date and Time

Administration Settings

Camera Log

Set Date and Time

Set Date and Time Manually

Copy Your PC's Time

Day 1 Month 8 Year 2017

Hour 10 Minute 33 Second 59

To use this function you must disable NTP server.

Save

Live Video

Setup Wizard

Settings +

Advanced Setup +

Camera Options -

Camera Info

Time

Administration Settings

Admin Password

User Accounts

User list

Camera Log

D-Link DCS-7517
v2.00

Admin Password ?

Admin Password Setting

New Password 30 characters maximum

Retype Password

Live Video

D-Link DCS-7517 v2.00

User Accounts ?

Setup Wizard

Settings +

Advanced Setup +

Camera Options -

Camera Info

Time

Administration Settings

Admin Password

User Accounts

User list

Camera Log

Add User Account

User Name	<input type="text"/>	20 users maximum
New Password	<input type="text"/>	30 characters maximum
Retype Password	<input type="text"/>	<input type="button" value="Add"/>

Live Video

D-Link DCS-7517 v2.00

Camera Log ?

Setup Wizard

Settings +

Advanced Setup +

Camera Options -

Camera Info

Time

Administration Settings

Camera Log

Camera Log

```
Aug 1 08:37:30 DCS-7517 user.err rec: cmd = reconfig_prebuffer
Aug 1 08:37:30 DCS-7517 user.err rec: recmsg_reconfig: start.
Aug 1 08:36:30 DCS-7517 user.err rec: cmd = reconfig_prebuffer
Aug 1 08:36:30 DCS-7517 user.err rec: recmsg_reconfig: start.
Aug 1 08:35:30 DCS-7517 user.err rec: cmd = reconfig_prebuffer
Aug 1 08:35:30 DCS-7517 user.err rec: recmsg_reconfig: start.
Aug 1 08:34:30 DCS-7517 user.err rec: cmd = reconfig_prebuffer
Aug 1 08:34:30 DCS-7517 user.err rec: recmsg_reconfig: start.
Aug 1 08:33:30 DCS-7517 user.err rec: cmd = reconfig_prebuffer
Aug 1 08:33:30 DCS-7517 user.err rec: recmsg_reconfig: start.
Aug 1 08:33:28 DCS-7517 user.debug event: Modify SNAPSHOT_FTP: vm_nOpe = -1
Aug 1 08:33:28 DCS-7517 user.err test_ap: Not connected.
Aug 1 08:33:28 DCS-7517 user.err test_ap: Not connected.
Aug 1 08:33:28 DCS-7517 user.err test_ap: Not connected.
Aug 1 08:33:28 DCS-7517 user.err test_ap: Not connected.
Aug 1 08:33:28 DCS-7517 user.err test_ap: Not connected.
Aug 1 08:33:28 DCS-7517 user.err test_ap: Not connected.
Aug 1 08:33:18 DCS-7517 user.info Venc: profile[0] running 0
Aug 1 08:33:18 DCS-7517 user.err aenc: callnum[204] running 0
Aug 1 08:33:18 DCS-7517 user.debug rtsp-svr: client (192.168.20.59) closed
Aug 1 08:33:18 DCS-7517 user.debug rtsp-svr: client (192.168.20.59) closed
Aug 1 08:33:18 DCS-7517 user.debug rtsp-svr: session count 0
Aug 1 08:33:18 DCS-7517 user.debug rtsp-svr: tearing down rtsp://192.168.20
Aug 1 08:33:18 DCS-7517 user.debug rtsp-svr: client (192.168.20.59) request
Aug 1 08:33:18 DCS-7517 user.err syslog: unlink /tmp/nvramdb
Aug 1 08:33:16 DCS-7517 user.err syslog: nvram_commit! (32)
Aug 1 08:33:11 DCS-7517 user.info Venc: his_osd_updatePMask!
Aug 1 08:33:11 DCS-7517 user.info Venc: reconfig video .....
Aug 1 08:33:11 DCS-7517 user.err httpd: MOTION_INTERVAL_RESTART
Aug 1 08:33:11 DCS-7517 user.err rec: cmd = reconfig
Aug 1 08:33:11 DCS-7517 user.err rec: recmsg_reconfig: start.
Aug 1 08:33:11 DCS-7517 user.info Venc: ctrlmsg_reconfigOthers() ...!
```

Clear Download